



JAZZ



CR-Z



INSIGHT



CITY



CIVIC HATCH



CIVIC SEDAN



ACCORD EURO



ACCORD



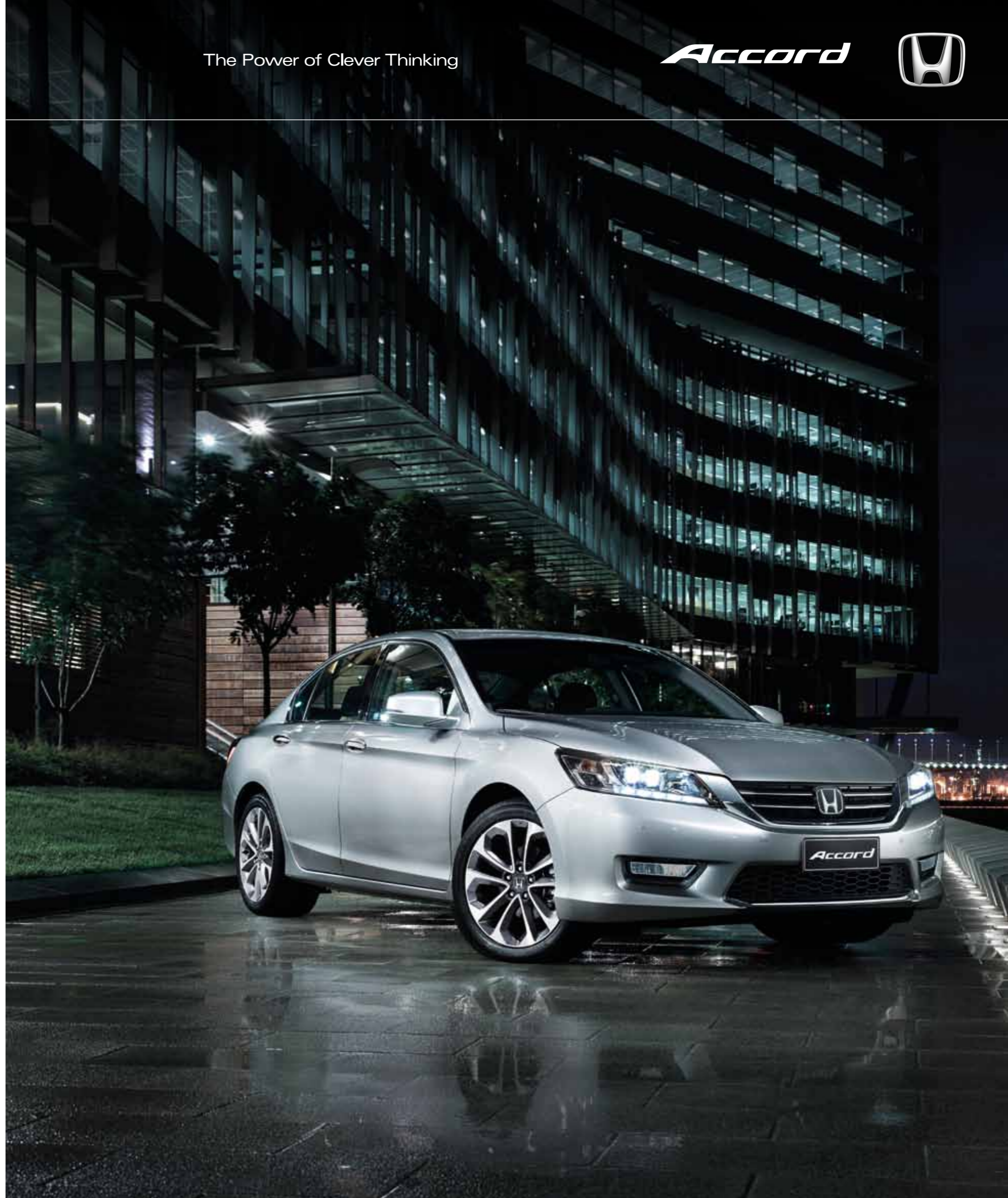
CR-V



ODYSSEY

The Power of Clever Thinking

Accord



HONDA
The Power of Dreams



Honda Australia Pty. Ltd.

ACN 004 759 611 ABN 66 004 759 611

95 Sharps Road, Tullamarine, Victoria, 3043. Freecall 1800 804 954 honda.com.au/cars

facebook.com/HondaAustraliaCars twitter.com/Honda_Australia youtube.com/HondaAustralia pinterest.com/HondaCars

The specifications and major features listed herein are accurate as at the date of printing (May 2013/13YM). However, Honda Australia Pty. Ltd. reserves the right to change or modify specifications and major features at any time without prior notice. Due to ordering, shipping and freight factors, some colour, model, option and accessory availabilities may vary from time to time. Check with your Honda Dealer for current information. Only Genuine Honda Accessories are made to fit Honda vehicles. The fuel consumption figures quoted in this brochure are based on ADR81/02 test results. You may experience different results depending on driving conditions and the condition of the vehicle. Honda warranties apply where due care is exercised by the owner and the vehicle is maintained in accordance with the vehicle's owner's manual. Please refer to Honda's warranty documentation for exclusions and conditions. Honda Australia Pty. Ltd. recommends careful examination of all official Honda warranty documentation before purchasing. This brochure is printed on HannoArt, a paper that is certified carbon neutral by the Carbon Reduction Institute (CRI) from seedling to printer. Made with totally chlorine free (TCF) pulp which has been sourced from managed plantation forests. HannoArt is manufactured under the world's best practice ISO 14001 Environmental Management System. The pulp used is Process Chlorine Free and is manufactured by an ISO 14001 certified mill. Accord V6L shown in Alabaster Silver on cover. HOD0052

The Honda Accord.

Having it all means feeling like the world was made with you in mind, and behind the wheel of the Accord, it is.

That's the power of clever thinking.



What does it mean to have it all?

Is it the impression of power that makes others pay attention? Is it intelligent, intuitive technologies? Is it uncompromising safety and handling, ensuring that whatever happens, you'll be ready? Or is it each of the above in equal measure?

The Honda Accord is the car that lets you have it all, without compromise. From the outside, the quality is obvious in the powerful shape of the Accord's body and its overall elegant and athletic appearance. Inside, no detail is too small to have been overlooked. More space and more light with expansive glass surface areas,

a larger boot and premium finishing touches put you in the perfect position to enjoy a seamless, beautifully balanced drive.

Behind the wheel, the latest innovative technology makes the drive something you will enjoy coming back to. A large touch-screen display, cleverly placed consoles and a steering wheel that lets you control it all is further complemented by Honda's most advanced safety features yet.

And all that just to start. With so many features, details, pleasant surprises, 'thought-of-that's' and more, you'll quickly see why the Honda Accord truly has it all.



THE LATEST FEATURES. CLASSIC STYLE. IN THE ACCORD, YOU GET BOTH.

With a look that will stand the test of time, the Accord's new, reshaped body exudes athletic, yet refined, power. At the front, a sporty appearance is achieved via a streamlined nose section through the bonnet and bumper.

The eye can't help but follow the front of the car down the body thanks to its classically shaped contours. The Accord looks like it's in motion even when standing still, through use of strong character lines that include in-line door handles and elegant windows.

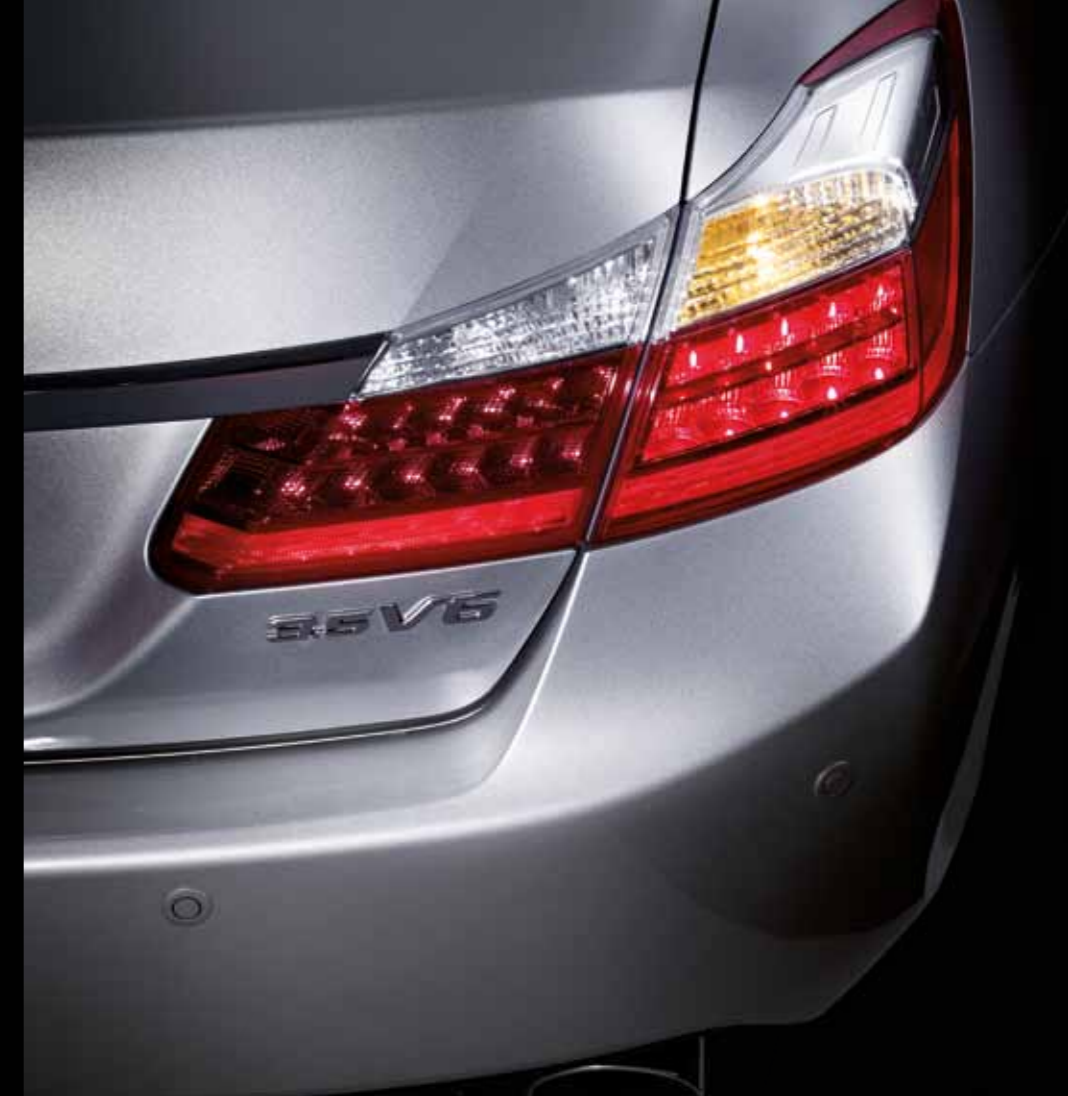
Attention to detail highlights the Accord's most striking features – from the style of the alloy wheels and appearance of the body-coloured side mirrors to the touch of chrome on the dual exhausts of the V6L. Chrome garnishes also extend along the rear of the car, with sleek, modern, wrap-around LED taillights.

Newly designed lighting technologies that pave the way forward.

Slim, angular headlights fit atop the newly designed LED Daytime Running Lights for visible sophistication.

LED projector beams¹ light the road ahead making for near-day illumination. Active Cornering Lights (ACL)² switch on as soon as you indicate or turn the wheel. The Accord also comes with Honda's High-beam Support System (HSS)², which shifts from high-beam to low-beam automatically when another vehicle comes into sight, giving you more time to enjoy the greatest luxury of all: a hassle-free drive.

So when you look at the Accord, one thing quickly becomes evident: whether it's classic style or modern comforts, you really can have it all.





Welcome to a place
where every tiny detail is
considered, and catered for.

When you open the door to the Accord, space is the first luxury you'll notice. Honda's clever ability to give the occupants more room, and the machine less, has opened up the rear of the cabin allowing more legroom below, more shoulder room above and more boot space... a space large enough that it can fit 4 golf bags, even without the seats folded down. You'll experience new levels of comfort with power adjustable, heated front seats¹, dual-zone automatic climate control and rear sunshades² to keep

you and your passengers at ease. Plus you'll never miss a word, thanks to the Active Noise Control (ANC) system blocking sound interruptions from the outside world. You'll also have the perfect view from inside, out, thanks to increased glass areas and thinner roof pillars. Throughout the interior, premium finishes and quality materials make driving a first class experience – whether you're behind the wheel or enjoying the freedom of space as a passenger.

¹VTi-L and V6L only. ²V6L only.

Accord V6L shown.



Experience a car
designed from
the inside, out.

The Accord's dash has been redesigned with practicality in mind. Ingenious design puts the latest technology where you need it most – right in your line of sight. In front of you sits a high contrast, white-on-black display perched in the centre of the speedometer. The display supplies your essential driving information, from the temperature outside to the distance left in the tank.

The centre console boasts dual screens – up top, an 8-inch, colour

intelligent-Multi Information Display (i-MID) shows your audio information, phone details, rear-view camera feed and a huge range of other features. Underneath sits the touch-screen audio display, eliminating button clusters with its sleek, simple design and easy-to-use on-screen controls.

And in control is how you'll feel gripping the Accord's multi-function steering wheel, where you have the tools for complete customisation of your drive, from the music playing to gear selection, should you wish.

*Not all devices are compatible and functionality may vary.

Accord V6L shown.

Lane Watch¹

Activate



Camera engages



Camera observes



View on screen

The Accord features a camera hidden in the passenger side mirror that lets you see what was previously invisible, simply by indicating to move into the left lane or manually pressing a button on the indicator stalk.

While traditional blind spot monitoring systems merely alert you when a vehicle is detected, Honda's revolutionary Lane Watch uses the i-MID display to show nearly four times the view of a regular mirror, as well as 'car length' markers, so you can easily and safely switch lanes. Now that's clever thinking.



Audio system

The Accord boasts a 6-speaker audio system including AM/FM tuner, CD player, USB port, auxiliary input and Bluetooth® audio streaming*. Select models¹ also treat you to a superb 360-watt, 7-speaker system including subwoofer.



Bluetooth® phone and audio^o

Keep your hands free while talking on your mobile, or wirelessly streaming music.



Multi-angle rear-view camera

All Accord models feature a multi-angle rear-view camera with three different views: a high-resolution wide view, normal view and a top-down view displayed on your i-MID display. Together with guidance lines that show the predicted reversing path of the vehicle, you'll always know where you're going.



Dual-zone climate control

Dual-zone climate control allows you and your front passenger to independently adjust the temperature. Plus, select models² feature GPS-linked solar sensors that calculate the sun's position and automatically adjust cabin temperature to compensate.



Auto wipers and headlights¹

For greater convenience in wet weather and dull light, rain-sensing wipers and dusk-sensing headlights take over and let you focus on the drive.



Smart keyless entry and start²

As long as the key fob is with you, the Accord will sense your approach and unlock the doors as soon as you touch the front handles. Once inside, the engine starts with just a push of a button.



Electric sunroof

The electric sunroof in the VTi-L model and above opens the roof through slide and tilt functionality, whilst a floating liner in the sunroof lets you adjust how much light to let into the cabin.



Power adjustable front seats²

VTi-L and V6L models allow for 8-way driver's seat power adjustment. Individual memory settings stored in each key fob will automatically reset the seat back to your preferred arrangement.



Auto-dimming rear-view mirror²

An electrochromatic rear-view mirror improves visibility and safety by automatically dimming during night-time driving, which reduces glare from the headlights of vehicles behind.



Heated seats

Leather-appointed³, heated front seats in the VTi-L and V6L offer an extra touch of comfort and luxury, and allow individual seat temperature settings for driver and passenger.



Satellite navigation²

The Accord's satellite navigation system with easy-to-follow graphics, extensive Points of Interest and the convenience of SUNA live traffic updates⁴ means you'll always know the best route to take.



Rear sunshades

The V6L comes with a rear sunshade that can be activated from the centre console. Each rear door also comes with its own manual slide up shade so your passengers can always be protected from the glare.

¹VTi-S and above. ²VTi-L and above. ^oThe Bluetooth word mark is owned by Bluetooth SIG, Inc. and use of such mark by Honda is under licence. Please check the list of compatible phones at honda.com.au/Bluetooth. ³Leather seat trim includes non-leather on selected, high impact surfaces. ⁴SUNA is a registered trademark of Intellematics Pty. Ltd. Coverage includes Melbourne, Sydney, Brisbane, Gold Coast, Adelaide, Perth and Canberra metropolitan areas. Refer to www.sunattraffic.com.au for full details.

Famous for its powerful performance – and rightly so.



With the choice of two powerhouse engines, both incorporating elements of Honda's Earth Dreams technology, how much power and performance you can handle is up to you.

The heart of the Accord: its engine

Power, refinement and fuel efficiency are the hallmarks of every Honda engine, and with the Accord, you have the choice of two – a powerful 2.4L 4 cylinder i-VTEC or the commanding 3.5L V6 i-VTEC offering formidable, yet efficient, performance.

The 4-cylinder i-VTEC puts you in control of 129kW of peak power and 225Nm of torque. Innovative fuel converters mean the engine uses as little as 7.9 litres per 100km*, matched by impressively low CO2 emissions.

The 3.5L V6 i-VTEC boasts an immense 206kW of peak power and 339Nm of torque. The force of this engine is matched only by its advanced technology, expending just 9.2 litres of fuel per 100km.^ The V6 engine also features Honda's revolutionary Variable Cylinder Management system (VCM) that shifts the engine from a 6-cylinder to a 3-cylinder, conserving fuel and keeping the power for when you really need it.

EARTH DREAMS
TECHNOLOGY

Transmissions

The 2.4L engine features a smooth, precision engineered 5-speed automatic transmission, whilst the V6 model has a 6-speed automatic transmission, combining fuel efficiency and a smooth operating system. 'S' mode allows for performance-oriented driving by giving you more responsive acceleration. Both transmissions can switch to manual mode and feature Honda's unique Grade Logic Control that holds the range of gears when tackling undulating terrain, ensuring a constantly smooth drive.

Eco Assist

Honda's Eco Assist works as a visual coaching system, changing the colour of your speedometer to help you drive more efficiently. When you accelerate heavily, the speedometer will glow white. Drive in a smooth, controlled way and the display glows an encouraging green.

ECON Mode

At the touch of a button, ECON Mode adjusts engine behaviour, transmission and air conditioning to maximise economy.

Handling

The Accord handles with the ease of a much lighter vehicle thanks to the use of high tensile steel and advanced suspension technology. Combining MacPherson struts at the front and an independent multi-link suspension at the rear, the Accord offers intuitive control and greater stability. The Accord's impeccable handling is also thanks to the Electric Power Steering system that reduces steering effort and fuel consumption.



Accord V6L shown in Alabaster Silver.
*The fuel consumption figure is based on ADR81/02 combined test results for VTi and VTi-S.
^The fuel consumption figure is based on ADR81/02 combined test results for V6L.

HONDA IS COMMITTED TO DESIGNING EVERY MODEL WITH EXCEPTIONAL SAFETY FEATURES. WE EVEN BUILT THE WORLD'S LARGEST OMNI-DIRECTIONAL CRASH FACILITY TO TEST OUR CARS MORE THOROUGHLY

Multi-angle rear-view camera

Every model has a reversing camera as standard, so you'll feel just as safe going backwards as you do going forwards.

Emergency Stop Signal (ESS)

If an emergency situation forces you to brake heavily, drivers behind you need as much warning as possible. Emergency Stop Signal does just that, automatically flashing the hazard lights in the event of hard braking to reduce the chance of a rear-end collision.

Front and rear parking sensors¹

These monitor hard-to-see obstacles around the car such as low walls or bicycles, and alert you when close, both visually and with an audible alarm.

Trailer Stability Assist (TSA)

When towing, Trailer Stability Assist (TSA) monitors trailer movement relative to the Accord itself. If too much difference is detected, such as during crosswinds, it adjusts engine torque and applies precisely the right amount of braking to the relevant wheels, stabilising both the Accord and the trailer.

Vehicle Stability Assist (VSA) with Traction Control

This technology helps keep the Accord on course in adverse driving conditions by detecting, then mitigating, potential understeer or oversteer. When necessary, VSA automatically reduces engine power and manages brake pressure to individual wheels to help regain control.

Hill Start Assist (HSA)

Hill Start Assist prevents 'roll back' when starting on an incline. The system controls brake pressure, keeping the car stationary for a moment after you release the brake pedal.

Tyre Deflation Warning System (DWS)

This clever technology detects and alerts you to an abnormal decrease in tyre pressure.

Whiplash mitigating front seats

In the event of a collision, the seatback springs are optimised so that the seat will more equally absorb the occupant's impact, in a manner that can minimise the severity of a whiplash injury.

Airbags

The clever Honda i-SRS driver airbag system inflates at different rates depending on crash severity, seatbelt usage and a host of other factors to keep you safe behind the wheel. Dual front, side and full-length curtain airbags are standard.

Advanced Compatibility Engineering (ACE)

The Accord has been designed with an innovative body structure, engineered to absorb and deflect the force of a frontal collision away from the passenger compartment, improving the safety of every occupant.

Pedestrian protection

Research has proven that sophisticated protection features, like windscreen wiper pivots that break away on impact and energy absorbing front guard mounts, dramatically improve a pedestrian's chance of survival if struck. So naturally they come standard on the Accord.

Daytime Running Lights

LED Daytime Running Lights don't just look great, they provide increased car visibility too.

ABS, EBD and Brake Assist

When emergency braking is detected, Brake Assist (BA) applies maximum braking pressure, activating the Anti-lock Braking System. ABS helps stop the wheels locking under heavy braking, allowing you to maintain steering control whilst Electronic Brake-force Distribution (EBD) works to maintain the directional stability of all four wheels.



Advanced Driver Assist System (ADAS).

Adaptive Cruise Control

Adaptive Cruise Control (ACC) builds on the functionality of the conventional cruise control system, adjusting the Accord's speed to maintain a consistent following distance.



1. You set your desired cruise control speed and distance between you and the car ahead.



2. When you approach a vehicle that is going slower than your set speed, a radar set behind the front grille detects the vehicle and automatically slows the Accord to maintain a set distance.



3. Once the road ahead is deemed clear, the Accord will automatically revert to your desired speed.

Honda has worked tirelessly to ensure the safest and most comfortable driving experience, no matter the situation. Nothing demonstrates this endless search for safety more than the intuitive nature of the Advanced Driver Assist System in the Accord, optional in the VTi-L and standard in the V6L.

Lane Keep Assist System

The Lane Keep Assist System (LKAS) uses a camera mounted behind the windscreen that, when activated, 'senses' the line markings on the road. The system emits an audible warning if the vehicle starts to drift off course and automatically provides gentle steering correction to get you back on track, helping you to stay safely in the centre of your lane.



Collision Mitigation Braking System

In the case of an impending collision, the Collision Mitigation Braking System (CMBS) warns you to take preventative action, and mitigates the severity of an accident if impact is deemed inevitable.



1. If the vehicle in front of you is too close you are prompted to take preventative action with both a visual and audio warning.



2. When the distance between you and the vehicle in front further reduces, the system applies light braking and a tactile warning by gently retracting the driver's seatbelt.



3. Finally, if an accident appears to be unavoidable, the system will apply strong braking to mitigate the severity of the impact. At this stage it will also retract both the driver and front passenger's seatbelts to help reduce possible injuries.

Select your
model and colour.



VTi

The Accord VTi comes standard with:

- 2.4 litre DOHC i-VTEC 4 cylinder engine
- 5-speed automatic transmission
- Electric Power Steering (EPS)
- 16-inch alloy wheels with full size alloy spare
- Chrome door handles
- Electrically adjustable door mirrors
- Projector-beam halogen headlights
- LED Daytime Running Lights (DRL)
- LED rear combination tail lights
- Mirror-mounted LED turn indicators
- Active Noise Control (ANC)
- Active Sound Control (ASC)
- Dual-zone climate control
- Eco Assist and ECON Mode
- Fabric seat trim
- Intelligent-Multi Information Display (i-MID)
- Multi-angle rear-view camera
- Touch-screen audio display
- 160-watt audio system with 6 speakers
- AM/FM radio with MP3 compatible CD player
- Auxiliary jack and USB connectivity
- Bluetooth® phone and audio connectivity*
- SRS airbags: dual front, side and full-length curtain
- Advanced Compatibility Engineering (ACE)
- Emergency Stop Signal (ESS)
- Hill Start Assist (HSA)
- Security alarm and immobiliser
- Trailer Stability Assist (TSA)
- Tyre Deflation Warning System (DWS)
- Vehicle Stability Assist (VSA) with Traction Control
- Whiplash mitigating front seats



VTi-S

Additional features over the VTi:

- 17-inch alloy wheels
- Front fog lights
- Projector-beam LED headlights
- Dusk-sensing automatic headlights
- Rain-sensing automatic front wipers
- Front and rear parking sensors
- Lane Watch blind spot monitoring system
- Passenger side mirror with reverse tilt-down function
- Leather-wrapped steering wheel
- Leather-wrapped gear shift knob
- 360-watt premium audio system with subwoofer



VTi-L

Additional features over the VTi-S:

- 18-inch alloy wheels
- Active Cornering Lights (ACL)
- High-beam Support System (HSS)
- Electric sunroof
- Smart keyless entry and start
- Auto-dimming rear view mirror
- i-dual-zone climate control with rear ventilation
- Leather-appointed seat trim[^]
- Heated front seats
- Satellite navigation system with SUNA live traffic updates[†]
- Wood-grain look interior finishes
- 8-way power adjustable driver seat with two position memory
- Driver power lumbar support
- 4-way power adjustable front passenger seat

Optional Advanced Driver Assist System (ADAS):

- Adaptive Cruise Control (ACC)
- Collision Mitigation Braking System (CMBS)
- Lane Keep Assist System (LKAS)



V6L

Additional features over the VTi-L:

- 3.5 litre SOHC i-VTEC V6 engine
- Active Control Engine Mount
- Variable Cylinder Management (VCM)
- 6-speed automatic transmission
- 18-inch alloy wheels (two-tone)
- Hydrophilic door mirrors
- Twin chrome exhaust
- 8-way power adjustable front passenger seat
- Electric rear sunshade
- Manual rear side sunshade
- Advanced Driver Assist System (ADAS)

Crystal Black Pearlescent

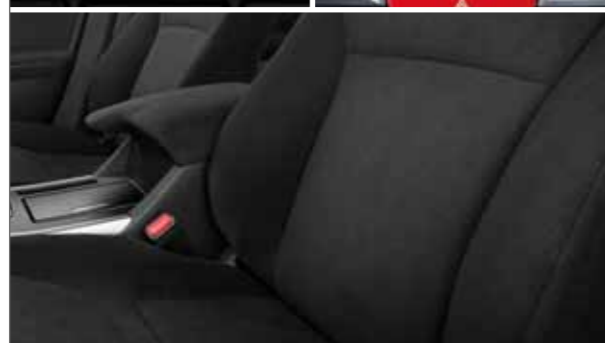
Modern Steel Metallic

Alabaster Silver Metallic

White Orchid Pearlescent

Champagne Frost Pearlescent

Carnelian Red Pearlescent



*The Bluetooth word mark is owned by Bluetooth SIG, Inc. and use of such mark by Honda is under licence. Please check the list of compatible phones at honda.com.au/Bluetooth
[^]Leather trim includes some non-leather on selected, high impact areas.
[†]SUNA is a registered trademark of Intelematics Pty, Ltd. Coverage includes Melbourne, Sydney, Brisbane, Gold Coast, Adelaide, Perth and Canberra metropolitan areas. Refer to www.sunattraffic.com.au for full details.



Accord VTi-S shown in Carnelian Red.

WHETHER YOU'RE LOOKING FOR A LITTLE MORE LUXURY OR WANT TO MAKE THE MOST OF THE ACCORD'S SPORTY SIDE, THERE ARE A HOST OF GENUINE HONDA ACCESSORIES THAT WILL DELIVER THE DESIRED EFFECT



▲ Top to bottom:
17-inch alloy wheels (VTi and VTi-S only)
Front grille (VTi, VTi-S and VTi-L* only)

Modulo Sports Pack.

Complement the Accord's already powerful and streamlined design with the Modulo Sports Pack. Choose the complete kit or mix and match to create your own personal combination.

- Front under spoiler^{1,2}
- Rear under spoiler^{1,3}
- Side skirt set with puddle lights⁴
- Rear spoiler – wing type



▼ Style Pack clockwise below:
Door sill garnish – illuminated
Boot garnish
Rear spoiler – ducktail type
Lower door garnish
Accent lighting



▲ Accord V6L shown in White Orchid Pearlescent fitted with Modulo Sports Pack and lower door garnish.

See your Honda Dealer for advice regarding Genuine Honda Accessories. Pictured accessories are all sold separately. All Genuine Honda Accessories installed at the time of retail sale of a new motor vehicle are covered by Honda's 3-year/100,000km Warranty. If installed after retail sale, they are covered for the remainder of the warranty or a minimum of 12 months – whichever is greater – provided that the accessory is fitted only to the vehicle for which it was intended by Honda Motor Co.
¹It is not recommended that front and rear under spoilers be fitted with corner styling guards. ²Front under spoiler is incompatible with front mud guard set. ³Rear under spoiler is incompatible with rear mud guard set. ⁴Side skirt set is incompatible with front mud guard set. *Front grille is incompatible with ADAS.

And being genuine, you know they'll fit perfectly and perform flawlessly. For more information, contact your local Dealer or visit honda.com.au/accord



Deluxe tailored mat set.



All-weather rubber mat set.



Door sill garnish set (metal finish).



Auto-dimming rear-view mirror (VTi and VTi-S only).



Fog light set (VTi only).



Headlight protector set.



Bonnet protector.



Corner styling guards (front)¹.



Corner styling guards (rear)¹.



Door styling guards.



Door visor set.



Mud guard set.
Front² and rear³ sold separately.



Boot drawer.



Organiser box.



Luggage area protector tray.



Rear bumper and bootlip protector.

ACCESSORIES BORN OF ENGINEERING, DESIGN AND THOUGHT.

Countless hours of thought were invested in delivering the Honda Accord, whose looks are as beautiful as its performance. To help keep it looking its best, there's a range of Genuine Honda Accessories to protect against damage. And because the Accord is not just for show, there's also a host of practical additions that will have you ready to carry and store whatever, wherever, with absolute ease.

- Other accessories include:
- Car body cover
 - Leather maintenance kit
 - Touch up paint
 - Tow bar kit (available late 2013)
 - Wheel lock nut set

See your Honda Dealer for advice regarding Genuine Honda Accessories. Pictured accessories are all sold separately. All Genuine Honda Accessories installed at the time of retail sale of a new motor vehicle are covered by Honda's 3-year/100,000km Warranty. If installed after retail sale, they are covered for the remainder of the warranty or a minimum of 12 months – whichever is greater – provided that the accessory is fitted only to the vehicle for which it was intended by Honda Motor Co. ¹It is not recommended that corner styling guards be fitted with under spoilers. ²Front mud guard set is incompatible with side skirt set and front under spoiler. ³Rear mud guard set is incompatible with rear under spoiler.

Accord Specifications

| Description | VTi | VTi-S | VTi-L | V6L |
|--|--|--|--|--|
| ENGINE | | | | |
| Engine type | Inline 4 cylinder DOHC i-VTEC | Inline 4 cylinder DOHC i-VTEC | Inline 4 cylinder DOHC i-VTEC | V shape 6 cylinder SOHC i-VTEC |
| Active Control Engine Mount (ACM) | – | – | – | ✓ |
| Capacity | 2.4 litre – 2356cc | 2.4 litre – 2356cc | 2.4 litre – 2356cc | 3.5 litre – 3471cc |
| Compression ratio | 10.1 | 10.1 | 10.1 | 10.5 |
| Bore x Stroke (mm) | 87 x 99.1 | 87 x 99.1 | 87 x 99.1 | 89 x 93 |
| Fuel type (minimum recommended) | Unleaded (RON91) | Unleaded (RON91) | Unleaded (RON91) | Unleaded (RON91) |
| Fuel supply system | Honda Programmed Fuel Injection (PGM-FI) | Honda Programmed Fuel Injection (PGM-FI) | Honda Programmed Fuel Injection (PGM-FI) | Honda Programmed Fuel Injection (PGM-FI) |
| Drive By Wire throttle (DBW) | ✓ | ✓ | ✓ | ✓ |
| Variable Cylinder Management (VCM) | – | – | – | ✓ |
| TRANSMISSION | | | | |
| Automatic transmission – with paddle shift | 5-Speed with Grade Logic Control | 5-Speed with Grade Logic Control | 5-Speed with Grade Logic Control | 6-Speed with Grade Logic Control |
| PERFORMANCE AND FUEL ECONOMY | | | | |
| Maximum power | 129kW @ 6200rpm | 129kW @ 6200rpm | 129kW @ 6200rpm | 206kW @ 6200rpm |
| Maximum torque | 225Nm @ 4000rpm | 225Nm @ 4000rpm | 225Nm @ 4000rpm | 339Nm @ 4900rpm |
| Fuel consumption (litres/100km)* | | | | |
| – combined | 7.9 | 7.9 | 8.1 | 9.2 |
| – urban | 11.4 | 11.4 | 11.6 | 13.9 |
| – extra urban | 5.8 | 5.8 | 6.1 | 6.4 |
| CO ₂ emissions (g/km)* | 187 | 187 | 192 | 217 |
| Emission standard | ADR79/02 (Euro 4) | ADR79/02 (Euro 4) | ADR79/02 (Euro 4) | ADR79/02 (Euro 4) |
| CHASSIS | | | | |
| Body type | Monocoque | Monocoque | Monocoque | Monocoque |
| Suspension | MacPherson strut | MacPherson strut | MacPherson strut | MacPherson strut |
| – front | Multi-link | Multi-link | Multi-link | Multi-link |
| – rear | Electric | Electric | Electric | Electric |
| Power steering | Electric | Electric | Electric | Electric |
| Stabiliser bars | Front and rear | Front and rear | Front and rear | Front and rear |
| Brakes | – front – rear | Ventilated disc Solid disc | Ventilated disc Solid disc | Ventilated disc Solid disc |
| EXTERIOR | | | | |
| Door handles | Chrome | Chrome | Chrome | Chrome |
| Electric sunroof | – | – | ✓ | ✓ |
| Electrically adjustable door mirrors | – | – | ✓ | ✓ |
| – with LED turn indicators | ✓ | ✓ | ✓ | ✓ |
| – with reverse tilt-down function | – | Passenger side only | Passenger side only | Passenger side only |
| – hydrophilic door mirrors | – | – | – | – |
| Exhaust (chrome) | Single | Single | Single | Twin |
| Rear window demister | ✓ | ✓ | ✓ | ✓ |
| Wipers | – front | Variable intermittent | Rain-sensing (auto) | Rain-sensing (auto) |
| EXTERIOR LIGHTS | | | | |
| Front fog lights | ■ | ✓ | ✓ | ✓ |
| Headlights | Projector-beam halogen | Projector-beam LED | Projector-beam LED | Projector-beam LED |
| – coming home/leaving home function | ✓ | ✓ | ✓ | ✓ |
| – auto on/off dusk-sensing | – | ✓ | ✓ | ✓ |
| – Active Cornering Lights (ACL) | – | – | ✓ | ✓ |
| – High-beam Support System (HSS) | – | – | ✓ | ✓ |
| LED Daytime Running Lights (DRL) | ✓ | ✓ | ✓ | ✓ |
| LED rear combination tail lights | ✓ | ✓ | ✓ | ✓ |
| DRIVER AIDS | | | | |
| Cruise control | ✓ | ✓ | ✓ | Adaptive |
| Eco Assist system (speedometer display) | ✓ | ✓ | ✓ | ✓ |
| ECON Mode | ✓ | ✓ | ✓ | ✓ |
| Multi Information Display (MID) | – | – | – | – |
| – odometer | ✓ | ✓ | ✓ | ✓ |
| – trip meter (A/B) | ✓ | ✓ | ✓ | ✓ |
| – instant/average fuel economy | ✓ | ✓ | ✓ | ✓ |
| – range | ✓ | ✓ | ✓ | ✓ |
| – average speed | ✓ | ✓ | ✓ | ✓ |
| – elapsed time | ✓ | ✓ | ✓ | ✓ |
| – outside temperature display | ✓ | ✓ | ✓ | ✓ |
| Intelligent-Multi Information Display (i-MID) | – | – | – | – |
| – audio display | ✓ | ✓ | ✓ | ✓ |
| – Bluetooth® phone display* | ✓ | ✓ | ✓ | ✓ |
| – fuel economy indicators | ✓ | ✓ | ✓ | ✓ |
| – vehicle settings | ✓ | ✓ | ✓ | ✓ |
| – clock | ✓ | ✓ | ✓ | ✓ |
| – customisable wallpaper | ✓ | ✓ | ✓ | ✓ |
| Tachometer | ✓ | ✓ | ✓ | ✓ |
| Steering wheel-mounted audio, Bluetooth®, cruise, LKAS, MID and i-MID controls | ✓ | ✓ | ✓ | ✓ |
| COMFORT AND CONVENIENCE | | | | |
| Accessory power outlet (12v) | ✓ | ✓ | ✓ | ✓ |
| Active Noise Control (ANC) and Active Sound Control (ASC) | ✓ | ✓ | ✓ | ✓ |
| Air conditioning – with rear ventilation ducts | Dual-zone climate control | Dual-zone climate control | i-dual-zone climate control | i-dual-zone climate control |
| Ashtray and cigarette lighter | ✓ | ✓ | ✓ | ✓ |
| Foot-operated park brake | ✓ | ✓ | ✓ | ✓ |
| Interior lighting | – glovebox | ✓ | ✓ | ✓ |
| – map lights | 2 | 2 | 2 | 2 |
| – luggage area light | ✓ | ✓ | ✓ | ✓ |
| – vanity mirror light | Driver and front passenger | Driver and front passenger | Driver and front passenger | Driver and front passenger |
| Head restraints | 5 | 5 | 5 | 5 |
| One touch lane change indicator | ✓ | ✓ | ✓ | ✓ |
| Power windows | – one touch auto up/down function | Driver and all passengers | Driver and all passengers | Driver and all passengers |
| – with remote key fob operation | Open and close | Open and close | Open and close | Open and close |
| Seatbelt height adjuster | Front | Front | Front | Front |
| Remote keyless entry | ✓ | ✓ | ✓ | ✓ |
| Smart keyless entry and start | – | – | ✓ | ✓ |
| Steering column adjustment | Tilt and telescopic | Tilt and telescopic | Tilt and telescopic | Tilt and telescopic |
| Sunshades | – rear window (electric) | – | – | – |
| – rear side windows (manual) | – | – | – | ✓ |
| Sunvisor vanity mirror | Driver and front passenger | Driver and front passenger | Driver and front passenger | Driver and front passenger |
| SEATING | | | | |
| Seat trim | Fabric | Fabric | Leather-appointed* | Leather-appointed* |
| Seats (front) | Fully reclining | Fully reclining | Fully reclining | Fully reclining |
| – heatable | – | – | ✓ | ✓ |
| – driver seat adjustment | Manual | Manual | 8-way power | 8-way power |
| – driver lumbar support | – | – | 2-way power | 2-way power |
| – driver seat memory system | – | – | 2-position memory | 2-position memory |
| – passenger seat adjustment | Manual | Manual | 4-way power | 8-way power |

Accord Specifications

| Description | VTi | VTi-S | VTi-L | V6L |
|---|--|----------------------------|----------------------------|----------------------------|
| SEATING CONT. | | | | |
| Seats (rear) | – fold-down rear seatback | ✓ | ✓ | ✓ |
| – centre fold down armrest | With 2 cup holders | With 2 cup holders | With 2 cup holders | With 2 cup holders |
| – locking boot pass-through | ✓ | ✓ | ✓ | ✓ |
| STORAGE | | | | |
| Cargo restraint hooks | 2 | 2 | 2 | 2 |
| Centre console box | ✓ | ✓ | ✓ | ✓ |
| Coat hanger | 1 | 1 | 1 | 1 |
| Cup/bottle holders | 6 | 6 | 6 | 6 |
| Door pockets | ✓ | ✓ | ✓ | ✓ |
| Glovebox (lockable and with dampener) | ✓ | ✓ | ✓ | ✓ |
| Seat back pocket | Driver and front passenger | Driver and front passenger | Driver and front passenger | Driver and front passenger |
| Sunglass holder | ✓ | ✓ | ✓ | ✓ |
| Sunvisor ticket holder (driver-side only) | ✓ | ✓ | ✓ | ✓ |
| INTERIOR STYLING | | | | |
| Gear shift knob and steering wheel | Urethane | Leather-wrapped | Leather-wrapped | Leather-wrapped |
| Wood-grain look interior finishes | – | – | ✓ | ✓ |
| MULTIMEDIA | | | | |
| Touch-screen audio display | ✓ | ✓ | ✓ | ✓ |
| AM/FM radio with MP3/WMA compatible CD player | ✓ | ✓ | ✓ | ✓ |
| Auxiliary jack | ✓ | ✓ | ✓ | ✓ |
| Bluetooth® hands-free phone and audio streaming* | ✓ | ✓ | ✓ | ✓ |
| USB connectivity with i-MID integration* | ✓ | ✓ | ✓ | ✓ |
| 160-watt audio system | 6 speakers | – | – | – |
| 360-watt premium audio system | – | 6 speakers and subwoofer | 6 speakers and subwoofer | 6 speakers and subwoofer |
| Satellite navigation with SUNA live traffic updates ¹ | – | – | ✓ | ✓ |
| Speed-sensitive Volume Compensation (SVC) | ✓ | ✓ | ✓ | ✓ |
| ACTIVE SAFETY | | | | |
| Advanced Driver Assist System (ADAS) featuring: | | | | |
| – Adaptive Cruise Control (ACC) | – | – | ▲ | ✓ |
| – Collision Mitigation Braking System (CMBS) | – | – | ▲ | ✓ |
| – Lane Keep Assist System (LKAS) | – | – | ▲ | ✓ |
| Anti-lock Braking System (ABS) | ✓ | ✓ | ✓ | ✓ |
| Auto-dimming rearview mirror | ■ | ■ | ✓ | ✓ |
| Electronic Brake-force Distribution (EBD) | ✓ | ✓ | ✓ | ✓ |
| Brake Assist (BA) | ✓ | ✓ | ✓ | ✓ |
| Emergency Stop Signal (ESS) | ✓ | ✓ | ✓ | ✓ |
| Hill Start Assist (HSA) | ✓ | ✓ | ✓ | ✓ |
| Lane Watch blind spot monitoring | – | i-MID display | i-MID display | i-MID display |
| Trailer Stability Assist (TSA) | ✓ | ✓ | ✓ | ✓ |
| Tyre Deflation Warning System (DWS) | ✓ | ✓ | ✓ | ✓ |
| Vehicle Stability Assist (VSA) with Traction Control System (TCS) | ✓ | ✓ | ✓ | ✓ |
| PASSIVE SAFETY | | | | |
| Advanced Compatibility Engineering (ACE) structure | ✓ | ✓ | ✓ | ✓ |
| Airbags SRS | – i-SRS dual stage inflation | Driver | Driver | Driver |
| – front | Driver and front passenger | Driver and front passenger | Driver and front passenger | Driver and front passenger |
| – side | Driver and front passenger | Driver and front passenger | Driver and front passenger | Driver and front passenger |
| – curtain | Full length | Full length | Full length | Full length |
| Child safety seat anchorages | | | | |
| – ISOFIX | 2 | 2 | 2 | 2 |
| – top tether | 3 | 3 | 3 | 3 |
| Childproof rear door locks | ✓ | ✓ | ✓ | ✓ |
| Honda G-force Control (G-Con) technology | ✓ | ✓ | ✓ | ✓ |
| Progressive crumple zones | Front and rear | Front and rear | Front and rear | Front and rear |
| Seatbelt pretensioner | Driver and front passenger | Driver and front passenger | Driver and front passenger | Driver and front passenger |
| Seatbelt reminder | Driver and all passengers | Driver and all passengers | Driver and all passengers | Driver and all passengers |
| Seatbelts | – 3-point Emergency Locking Retractors | Front and rear | Front and rear | Front and rear |
| – 3-point Automatic Locking Retractors | Rear | Rear | Rear | Rear |
| Side impact protection | ✓ | ✓ | ✓ | ✓ |
| Whiplash mitigating front seats | ✓ | ✓ | ✓ | ✓ |
| PARKING AIDS | | | | |
| Multi-angle rear-view camera | i-MID display | i-MID display | i-MID display | i-MID display |
| Parking sensors – front and rear | – | ✓ | ✓ | ✓ |
| SECURITY | | | | |
| Engine immobiliser | ✓ | ✓ | ✓ | ✓ |
| Security alarm system | ✓ | ✓ | ✓ | ✓ |
| DIMENSIONS | | | | |
| Overall length (mm) | 4885 | 4885 | 4885 | 4885 |
| Overall width (mm) | 1850 | 1850 | 1850 | 1850 |
| Overall height (mm) | 1465 | 1465 | 1465 | 1465 |
| Wheelbase (mm) | 2775 | 2775 | 2775 | 2775 |
| Front track (mm) | 1595 | 1585 | 1585 | 1585 |
| Rear track (mm) | 1595 | 1585 | 1585 | 1585 |
| Ground clearance – un-laden (mm) | 150 | 150 | 150 | 150 |
| Minimum turning radius at wheel centre (metres) | 5.7 | 5.7 | 5.9 | 5.9 |
| WEIGHTS AND CAPACITIES | | | | |
| Boot capacity (litres in VDA standard) | 461 | 457 | 457 | 457 |
| Fuel tank capacity (litres) | 65 | 65 | 65 | 65 |
| Kerb weight (kg) | 1510 | 1530 | 1572 | 1667 |
| Maximum towing capacity | | | | |
| – trailer with brakes (kg) | 1600 | 1600 | 1600 | 1600 |
| – trailer without brakes (kg) | 500 | 500 | 500 | 500 |
| – tow ball downforce (kg) | 60 | 60 | 60 | 60 |
| Seating capacity | 5 | 5 | 5 | 5 |
| WHEELS AND TYRES | | | | |
| Wheel size | 16 x 6.5J | 17 x 7.5J | 18 x 8J | 18 x 8J |
| Tyre size | 215/60 R16 95H | 225/50 R17 94V | 235/45 R18 98W | 235/45 R18 98W |
| Wheel type | Alloy | Alloy | Alloy | Alloy (two-tone) |
| Spare wheel type | Full-size alloy | Full-size alloy | Full-size alloy | Full-size alloy |

✓Standard equipment. ▲Factory option ■Accessory option. –Not available. *The figures quoted in this brochure are based on ADR81/02 combined test results. You may experience different results depending on driving conditions and the condition of the vehicle. *The Bluetooth word mark is owned by the Bluetooth SIG, Inc. and use of such mark by Honda is under licence. Please check the list of compatible phones at honda.com.au/Bluetooth *Only available in conjunction with the Advanced Driver Assist System (ADAS). *Leather trim includes some non-leather on selected, high impact areas. *Not all devices are compatible and functionality will vary depending on the device. ¹SUNA is a registered trademark of Intelematics Pty. Ltd. Coverage includes Melbourne, Sydney, Brisbane, Gold Coast, Adelaide, Perth and Canberra metropolitan areas. Refer to www.sunattraffic.com.au for full details.

You're never alone in a Honda.

Buy an Accord and you'll be amazed at how well you'll be looked after.

The care starts with a 3-year/100,000km warranty and 6-year rust perforation warranty*.

You'll also have access to HondaONE, an exclusive website that gives you up-to-date service history, vehicle records, maintenance tips and service reminders.

Plus we have a range of benefits that ensure your Accord is as pleasurable to own as it is to drive.

Dedicated Honda Care

Servicing your Accord at a local Honda Dealership will ensure you protect your investment and maximise its outstanding resale value. Dedicated Honda Care provides access to specialist diagnostic equipment and Honda Genuine Parts. There's also the advantage of factory-trained technicians with unparalleled knowledge of Honda products.

Honda Warranty Plus*

Purchase Honda Warranty Plus and your Accord will be protected with no claim limits and no cost for labour and parts for 5 years or 140,000 kilometres (inclusive of New Vehicle Warranty). You'll also be entitled to 5 years' Premium Roadside Assist. Visit honda.com.au/warranty for more information.

Honda Insurance*

If you're looking for cover as reliable as your Accord, you really need Honda Motor Vehicle Insurance.

You'll enjoy a range of benefits, including:

- 3-year new replacement if your Honda is a total loss.
- Genuine Honda approved parts for the first 3 years.
- Lifetime guarantee on authorised repairs.

For more information visit honda.com.au/insurance

Honda Finance

Whether you're buying a Honda for yourself or a business, we have a wide range of flexible finance and leasing options. So see your Honda Dealer to find a financial solution that suits you as perfectly as your Accord does. For more information visit honda.com.au/finance

Honda Merchandise

Show your true colours with genuine Honda merchandise. For everything from apparel to travel goods, visit your local Honda Dealer or view the range at honda.com.au/merchandise



For more information visit honda.com.au or Freecall 1800 804 954

*Honda warranties apply where due care is exercised by the owner and the vehicle is maintained in accordance with the Owner's Warranty and Service Manual. Please visit honda.com.au/warranty for full terms and conditions. *5-year/140,000km Warranty Plus is inclusive of 3-year/100,000km New Vehicle Warranty. Please refer to Honda's Warranty documentation for conditions at honda.com.au/warranty *Honda Insurance is underwritten by Allianz Australia Insurance Limited Licence No. 234 708 ABN 15 000 122 850 (Allianz). In arranging this insurance Honda Australia Pty Ltd ABN 66 004 759 611 and the authorised dealers act as agents of Allianz and not as your agent. In entering into a contract of insurance for this policy, you acknowledge that this Product Disclosure Statement (PDS), your Schedule and any other document which we tell you forms part of this policy (Policy Documentation), sets out the entire agreement that exists between you and Allianz in connection with this policy. You also acknowledge that you have not relied on any prior representations which are not expressly included in or are otherwise inconsistent with the Policy Documentation. Neither Honda nor any of its related companies have any liability in respect of this policy.

Accord V6L shown in Alabaster Silver fitted with accessory ducktail spoiler.