

Table with columns for Engine, Transmission, Gear ratio, Steering, Brakes, Dimensions, Interior, Weight, Towing Capacity, Fuel Figures ADR81/021. Sub-columns include 2.0 Petrol and 1.6 CRDi.

Table with columns for Suspension, Active Safety, Passive Safety, Body, Seatbelts, Seating, Security, Multimedia System. Sub-columns include i30cw Wagon, SX, SLX, Sportswagon.

Table with columns for Occupant Comfort, Exterior Styling, Interior Styling, Interior Lighting, Interior Ventilation, Storage Solutions. Sub-columns include i30cw Wagon, SX, SLX, Sportswagon.

*Finishes specified as leather and/or leatherette may contain elements of genuine leather, polyurethane leather (leather substitute) or man-made materials...

Genuine Hyundai Accessories

Personalise your new i30 with an exciting range of Genuine Hyundai Accessories designed and tested in accordance with Hyundai's strict safety standards to perfectly complement the vehicle's style and sophistication.

There is a range of Genuine Hyundai Accessories to suit everyone's needs, either to assist in the protection of the vehicle, enhance the look or personalise it to suit your lifestyle. For details on the full range of Genuine Hyundai i30 Accessories visit hyundai.com.au

Personalise it, protect it and stylise it with Genuine Hyundai Accessories. Whoever you are, make it yours!

All Genuine Hyundai Accessories are covered by Hyundai's 5 Year/Unlimited Kilometre Accessories Warranty† – an Australian first. Please refer to www.hyundai.com.au/i30 for full details.

● = Standard ○ = Optional - = Not available

Genuine Hyundai Accessories	i30cw Wagon		
	SX	SLX	Sportswagon
Technology			
DVD Entertainment	○	○	○
Interior			
Universal Carpet Floor Mats (set of 4)	○	○	○
Tailored Carpet Floor Mats (set of 4)	○	○	○
Dash Mat	○	○	○
Cargo Liner	○	○	○
Fabric Rear Bumper Protector	○	○	○
Portable Cooler – 12V 15L	○	○	○
Exterior			
Headlight Protectors (set of 2)	○	○	○
Bonnet Protector	○	○	○
Tinted Stylevisors (front pair only)	○	○	○
Front Mudflaps* (set of 2)	○	○	○
Rear Mudflaps* (set of 2)	○	○	○
Towbar & Towball† – 50mm chrome	○	○	○
Trailer Wiring Harness (includes flat pin)	○	○	○
7 Pin Large Round Adaptor	○	○	○
7 Pin Small Round Adaptor	○	○	○
Universal Lock Nuts (set of 4)	○	○	○
Styling			
15" Alloy Wheels (sold singularly)	○	○	○
16" Alloy Wheels (sold singularly)	○	●	○
17" Chrome Alloy Wheels (sold singularly)	○	○	●
17" Spider Alloy Wheels (sold singularly)	○	○	○
Premium Gear Knob	○	○	○
Rear Spoiler	○	○	○
Alloy Sports Pedal – Manual	○	○	●
Alloy Sports Pedal – Auto	○	○	●
Roof Racks and Lifestyle			
Whispbar™ Quiet Roof Racks* (2 bar set)	○	○	○
Roof Mounted Bike Carrier	○	○	○
Roof Mounted Kayak Holder	○	○	○
Ski & Snowboard Carrier	○	○	○
Surfboard Carrier	○	○	○
Safety			
First Aid Kit (4 pockets)	○	○	○
Reverse Park Assist* (4 head)	○	●	●



Bonnet Protector



Headlight Protectors (set of 2)



DVD Entertainment.



Whispbar™ Quiet Roof Racks

Some images featured are included for illustration purposes only.

 NEW THINKING.
NEW POSSIBILITIES.

i30cw Wagon



i30 cw Sportswagon shown in Hyper Silver

SX
cw wagon

SLX
cw wagon

cw Sportswagon

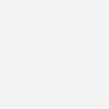
Santorini Blue
(S7U) Metallic/Mica



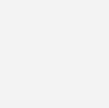
Hyper Silver
(N5S) Metallic



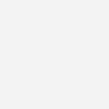
Sleek Silver
(N3S) Metallic



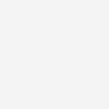
Tropic Red
(TRP) Solid



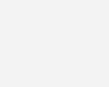
Creamy White
(YAC) Solid



Clean Blue
(N2U) Metallic



Phantom Black
(NKA) Mica



SX cw wagon Charcoal Black Woven Cloth

SLX cw wagon Charcoal Black Mesh Cloth

Charcoal Black Leatherette*

*Finishes specified as leather and/or leatherette may contain elements of genuine leather, polyurethane leather (leather substitute) or man-made materials, or a combination thereof.

		i30cw wagon		
		SX	SLX	Sportswagon
2.0 Petrol	Manual	●		
	Automatic	●	●	●
1.6 CRDi	Manual	●		
	Automatic	●	●	

All Genuine Hyundai Accessories are covered by Hyundai's Australian First 5 Year/Unlimited Kilometre Accessories Warranty*.

† All Genuine Hyundai Accessories are subject to warranty conditions. See your nearest Hyundai Dealer or visit our website at hyundai.com.au for full warranty terms and usage recommendations. Accessories pictured are all sold separately at an additional cost. Finishes specified as leather may contain elements of genuine leather, polyurethane leather (leather substitute) or man-made materials, or a conjunction thereof.

- Maximum ball down load=75Kg. Towbar Capacity, 2.0L Petrol & 1.6 Diesel = 1200kg (braked). Towbar capacity subject to regulatory requirements, towbar design, vehicle design and towing equipment limitations.
- Load capacity = 75kg evenly distributed over 2 bars.
- Park Assist Sensors are designed as driver assist function only and should not be used as a substitute for skilled driving and safe parking practices. While the Park Assist sensors monitor objects on approach, there may be occasions where blind spots affect the sensitivity of the sensors and as a result the area into which the vehicle is heading must be visually monitored by the driver at all times while parking.
- Mudflaps cannot be fitted to vehicles with a Full BodyKit or Rear Skirt, and a Full BodyKit or Rear Skirt cannot be fitted to a vehicle with mudflaps.

 **Genuine Accessories**

HYUNDAI
iCare
AUSTRALIA'S FIRST
5 YEAR UNLIMITED KM WARRANTY

Hyundai Motor Company (HMC) and the Hyundai Motor Company Australia (HMCA) each reserve the right to alter vehicle specifications and equipment levels without notice. Some equipment featured on the cars in this spec sheet may not be available in Australia or may be optional. To the extent permitted by the law, neither HMC nor HMCA shall be liable to any person as a result of reliance on the content of this spec sheet. Please consult your Hyundai dealer for the latest specifications, equipment levels, options, prices, colours and vehicle availability. Metallic and mica paint are optional extras. Hyundai passenger vehicles are provided with a 5 year unlimited kilometre warranty if the vehicle has been used for private and domestic purposes and are not and have not been previously used for a commercial purpose, including but not limited to taxi, hire, rental, courier, security, driving school, tour or bus operator and emergency vehicles. Passenger vehicles which are or have been used for a commercial purpose are provided with a 5 year/130,000km warranty (whichever occurs first). Note: Information in this spec sheet is current as at 29/06/2012. Colours are indicative only and may vary due to the printing process. HMCA4846. Part No. FD07125

 **MIX**
Paper from
responsible sources
www.fsc.org FSC® C007421

Hyundai Motor Company Australia Pty Ltd Corner of 394 Lane Cove Road & Hyundai Drive, Macquarie Park NSW 2113 T. 02 8873 6000 F. 02 8873 6005