



V8 XJ Series/XK

DATE 04/02

303-52

SERVICE

TECHNICAL BULLETIN

Difficult Or Non-Start/Hesitation – Normally Aspirated AJ 27 Engines – Reflash ECM

MODEL
1999-2000 MY XK Range
1999-2000 MY V8 XJ Series
VIN
031303-A11050
853956-F20644

Issue:

This Technical Bulletin has been issued to address two specific customer complaints:

- Difficult/non-start from cold after moving the vehicle a short distance the previous day (1999-2000 MY).
- Slight engine hesitation when the air conditioning or slow speed-cooling fan operates (2000 MY). (On V8 XJ Series Vehicles between 50 mph and 70 mph (80 - 113 km/h) at steady speed.)

Customer Complaint	VIN Range V8 XJ Series	Model Year	VIN Range XK Series	Engine	ECM Part Number
Difficult/Non start	853936 - 878717	99 MY	031303 - 042775	4.0 L	LNE 1410BJ
Difficult/Non start	F00103 - F20644	00 MY	A00083 - A11050	4.0 L	LNF 1410BF
Hesitation	F00103 - F20644	00 MY	A00083 - A11050	4.0 L	LNF 1410BF

Note: S479 still applies to AJ26 (1997-98 MY) vehicles.

Action:

In case of a customer complaint of the above condition(s) on XK or XJ vehicles within the above VIN ranges, reprogram the Electronic Control Module (ECM) using the latest release (JTP 759/12 or later) of the Worldwide Diagnostic System (WDS) disc.

REPROGRAMMING PROCEDURE

Note: Ensure WDS is loaded with the latest level software (JTP 759/12 or later).

1. Position WDS alongside vehicle, switch 'ON' Portable Test Unit (PTU) and allow software to load.
2. Connect PTU to vehicle via diagnostic cable.
3. Enter vehicle VIN number and navigate to content model screen, select engine system, and then go to DTC monitor.
4. Read engine DTCs, if stored, clear from memory.

Note: If any OBD codes stored, find fault and carry out separate Warranty Claim.

5. Navigate to configuration main menu; select and run 're-configure existing ECM'.
6. After reprogramming of the ECM is complete, switch 'OFF' PTU, disconnect and return WDS to original location.
7. On XK series vehicles fit generic update label (JJM 998499/20) alongside the VCATS label in the trunk with revised part number (from previous table), and date of re-configuration added to label (Illustration 1).

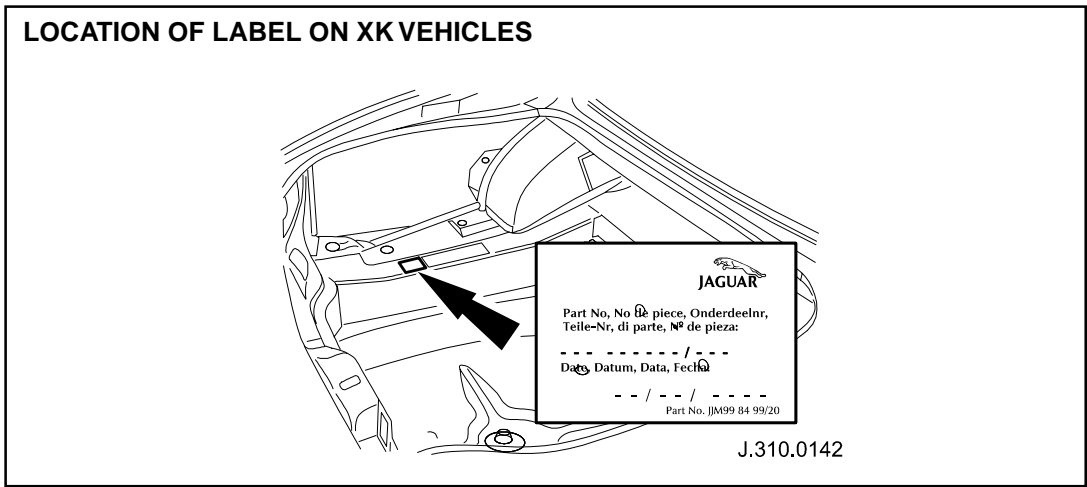


ILLUSTRATION 1

On V8 XJ series vehicles fit generic update label (JJM 998499/20) alongside the VCATS label in the trunk with revised part number (from previous table), and date of re-configuration added to label (Illustration 2).

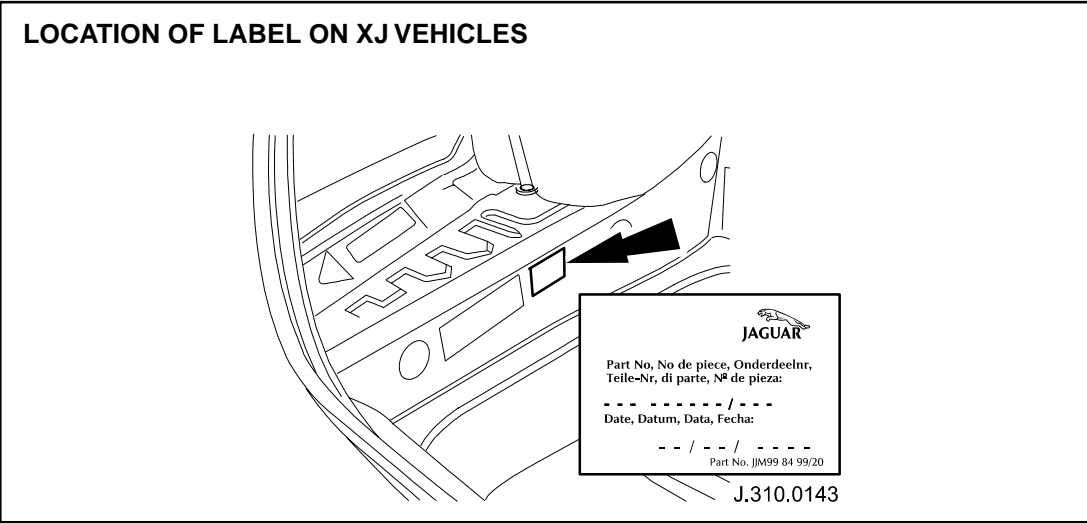


ILLUSTRATION 2

AUTHORIZED MODIFICATION LABEL

AUTHORIZED MODIFICATIONS

THE FOLLOWING MODIFICATIONS HAVE BEEN MADE:

REFLASH PER TSB 303-52

WRITE IN DESCRIPTION

WRITE IN DATE

WRITE IN DEALER NUMBER

THESE MODIFICATIONS HAVE BEEN APPROVED, AS APPROPRIATE.

DEALER NUMBER: DATE:

CHANGE AUTHORITY: JAGUAR PLC CAMPAIGN

PRINTED IN U.S.A.

ILLUSTRATION 3

- Enter your dealer number and the date on the Authorized Modification Label as shown (Illustration 3). Write in “Reflash per TSB 303-52.” Apply the label to the driver side B-post below the door striker plate on XK8 vehicles, and next to the left hood hinge on V8 XJ Series. Be sure to apply the clear protective sheet over the label.

Parts Information:

To obtain blank Authorized Modification Labels, refer to Administration Bulletin 6-94 (USA) or 6-16/02 (Canada) titled “Availability of Service Action and Recall Authorized Modification Labels/stickers.”

<u>DESCRIPTION</u>	<u>PART NUMBER</u>	<u>QTY</u>
Generic update label	JJM 998499/20	1

Warranty Information:

<u>FAULT CODE</u>	<u>R.O. NUMBER</u>	<u>DESCRIPTION</u>	<u>TIME ALLOWANCE</u>
BX DB 42	86.99.13	Reprogram ECM	0.4 hrs.