



XK8

DATE 4/97
Amended 4/98

206-01

SERVICE

TECHNICAL BULLETIN

Parking Brake – Poor Release – Repair Procedure

MODEL 1997 MY-ON
XK8 Range
VIN
001001-009013

Remove and destroy Bulletin 206-01, dated 4/97.
Replace with this Bulletin.
Revisions are marked with a bar and in **bold text**.

Issue:

Some XK8 vehicles within the above VIN Range, may experience either a parking brake (handbrake) warning lamp that remains ON, and/or a rattle noise from rear of vehicle on uneven road surfaces.

Readjustment of the parking brake mechanism will provide a more positive return to the hand brake lever, ensuring that the warning lamp does not remain on. Removing the slack from the cable will eliminate rattle which may be caused by the hand brake equalizer.

A secondary return spring and support bracket were introduced at VIN 009014. This bulletin includes instructions for installing these components.

Action:

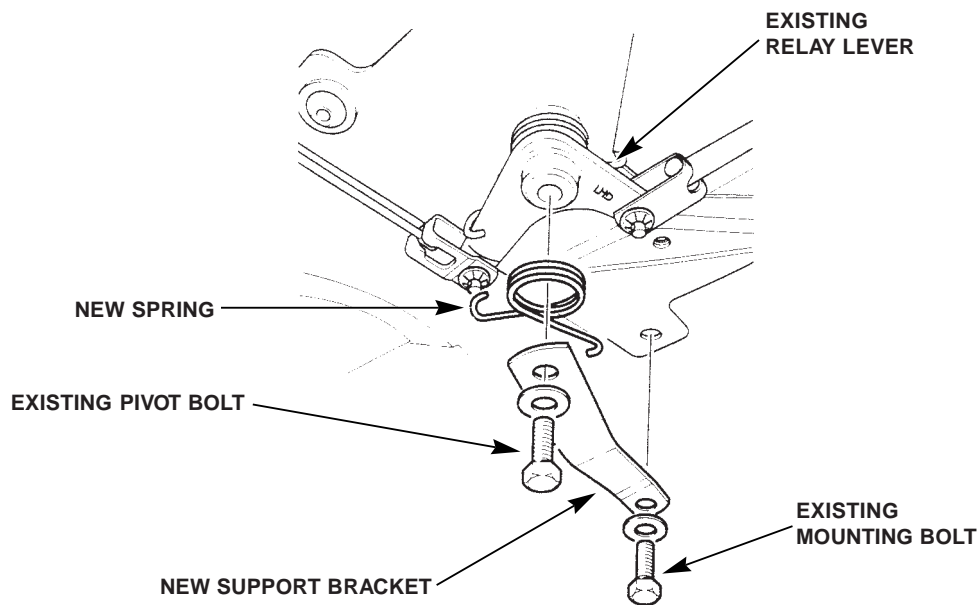
In case of a customer complaint of the above conditions on a 1997 MY XK8 within the above VIN range proceed as follows:

PARKING BRAKE ADJUSTMENT/MODIFICATION PROCEDURE

1. Release the hand brake completely.
2. Raise the vehicle and remove both rear road wheels.
3. Rotate one rear hub to provide access to the hand brake shoe adjuster.
4. Turn the adjuster counterclockwise until the shoes contact the brake disc.
5. Turn the adjuster clockwise until the hub rotates freely.
6. Repeat items 2-5 above on the opposite side of vehicle.
7. Reinstall the road wheels.
8. Turn the cable adjuster nut until 3-4 'clicks' at the hand brake lever provides a good hand brake application.
9. Switch the ignition on. Check that the hand brake warning lamp is OFF when the hand brake lever is fully OFF. Switch the ignition off.
10. Lower the vehicle.
11. Drive the vehicle on an uneven road to verify that the hand brake equalizer assembly no longer rattles. If rattling still occurs, continue with step 12.

12. Raise the vehicle and release the hand brake completely.

INSTALLING NEW SPRING AND SUPPORT BRACKET



JSI-3132

ILLUSTRATION 1

13. Remove the pivot bolt of hand brake relay lever (Illustration 1) from the relay lever mounting bracket.
14. Insert the pivot bolt through the new support bracket (Illustration 1). Position the lubricated bushing over the bolt.
15. Place the new return spring, Illustration 1, over the bolt and bushing.
16. Insert the bolt and bushing into the relay lever and screw loosely into the mounting bracket. Do not fully tighten the bolt.
17. Verify that the hooked ends of the spring fit the relay lever and the support bracket.
18. Loosen and remove the mounting bolt from the mounting bracket, Illustration 1. Place the support bracket into position, reinsert the bolt and torque to 22-28 Nm (16.2-20.7 lb ft).
19. Final tighten the pivot bolt of the relay lever to 22-28 Nm (16.2-20.7 lb ft).
20. Lower the vehicle and check the operation of the hand brake.

Parts Information:

<u>DESCRIPTION</u>	<u>PART NUMBER</u>	<u>QTY</u>
Return spring	MJA 5149BA	1
Relay lever support bracket	MJA 5193AA	1

Warranty Information:

<u>FAULT</u>	<u>R.O.</u>	<u>DESCRIPTION</u>	<u>TIME</u>
<u>CODE</u>	<u>NUMBER</u>		<u>ALLOWANCE</u>
HL ** **	70.91.21	Handbrake return spring & poor release - modification	0.50 hrs.

** ** DH HR Handbrake cable equalizer - loose
DH MS Handbrake cable equalizer - rattles and squeaks
BM LF Handbrake warning light switch - permanent open circuit