

DISCOVERY 3



GO BEYOND



LAND ROVER





Introduction

The highly advanced and supremely able Discovery 3

PAGE 3

On-road performance

Uncompromising power and dynamic performance

PAGE 4

Breadth of capability

Terrain Response® and off-road capability

PAGE 12

Interior technology

Command driving position and navigation technology

PAGE 19

Interior

Stadium seating and versatile cabin design

PAGE 25

Safety

Smart technology, safety technology

PAGE 35

Specifications and choices

Exterior colours, interior colours, wheels and accessories

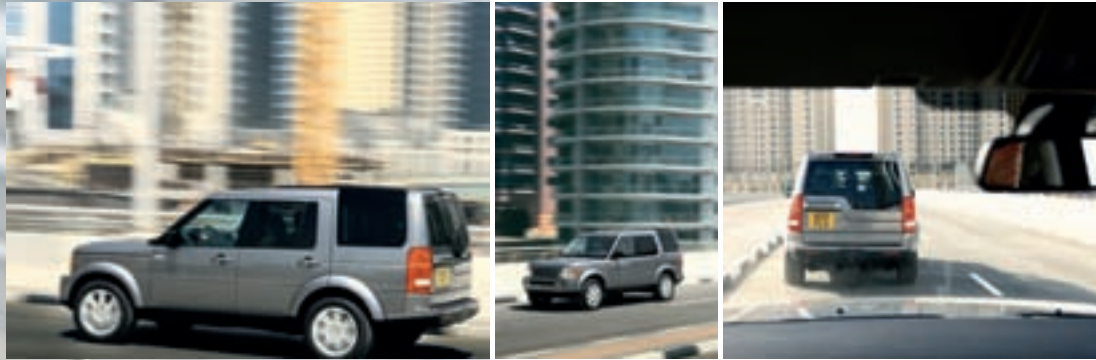
PAGE 37

Technical data

Features, engines, technical data, dimensions, capability and weights

PAGE 48





Distinctive, innovative and versatile design, the Discovery 3 has won over 90 motoring awards since its launch. Outstanding breadth of

capability. Instantly recognisable as a Land Rover and now available with elegant body coloured exterior style enhancements. Packed with the latest, smart enabling technology, Discovery 3 is built to take the stress out of everyday life and get things done. Inside it maximises all available space. There is a truly flexible seating layout that offers multiple configurations and up to seven full-size adult seats, all arranged stadium-style to give passengers a panoramic view of the road ahead.

Outside the design is bold, geometric, stylish and purposeful. Clean. Modern.

Multi-talented, Discovery 3 is the state-of-the-art, all-purpose Land Rover.

Dynamic performance on-road. Discovery 3 features advanced technology that helps keep the driver connected with the road and provides an enhanced, more engaged and entertaining drive. It makes getting behind the wheel and heading for the open road pure pleasure. Four-corner electronic air suspension, standard on all models maintains a smooth, constant ride regardless of the distribution of passengers and size of load. The result car-like handling that does not compromise extreme axle articulation and, consequently, the off-road ability of the vehicle.





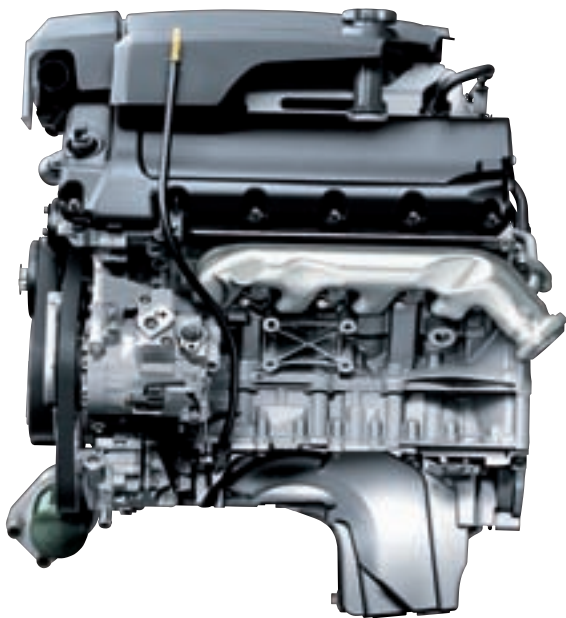




For sheer ability at putting power down onto a road, a rutted track or slipway and pulling the largest of loads out of trouble, Discovery 3 is in a league of its own. Advanced, user-friendly technology optimises torque and traction while independent electronic air suspension helps provide a controlled, level ride over any surface. Tow a boat out of a marina or pull a horse float up a wet, grassy slope and Discovery 3 knows instinctively exactly what to do. As you'd expect, a comprehensive range of towing accessories is available for help with specific uses and lifestyles.

Uncompromising power

Three superb engines: two petrol, one diesel. Leading the line-up is the 4.4 litre V8 petrol engine. Renowned for its thermal efficiency (improving economy, warm-up times and responsiveness), the lightweight, double overhead camshaft design delivers refined power up to an impressive 220kW. Also available is the smooth, durable petrol 4.0 litre V6 which offers good performance and economy with maximum power of 160kW and maximum torque of a substantial 360Nm. The high-technology 2.7 litre V6 diesel provides smooth torque distribution, flexibility, quiet refinement and economy thanks to the latest common rail technology (it meets EU4 emissions standards), innovative materials and exceptionally high fuel pressure. Maximum power is 140kW at 4,000rpm with maximum torque an enormous 440Nm at just 1,900rpm. All engines have been developed to cope with specific requirements of a Land Rover product: strength and durability when operating in dusty environments, on steep inclines and wading through rivers.



ENGINE DATA

TDV6

High pressure common rail injection diesel with a compacted graphite iron engine block and electronically controlled variable nozzle turbo, benefiting performance, economy and emissions.

V6 Petrol

Large capacity V6 with aluminium alloy heads and counter balanced crankshaft. Die cast aluminium variable track inlet manifold and electronically controlled throttle, ensuring efficient and controlled power delivery.

V8 Petrol

Quad cam, 32 valve V8 with lightweight aluminium alloy block and head. Electronic throttle and variable camshaft phasing, continuously adapt valve timing to driving demands.

Engine	TDV6	V6 Petrol	V8 Petrol
Location	Front North-South	Front North-South	Front North-South
Capacity	2,720	4,009	4,394
No. of cylinders	6	6	8
Cylinder layout	V - Longitudinal	V - Longitudinal	V - Longitudinal
Bore (mm)	81	100.4	88
Stroke (mm)	88	84.4	90.3
Compression ratio	17.3:1	9.75:1	10.5:1
Cylinder head material	Pressure die cast aluminium alloy	Lightweight aluminium alloy	Lightweight aluminium alloy
Cylinder block material	Compacted graphite iron	Cast iron	Lightweight aluminium alloy
Valves per cylinder	4	2	4
Maximum power	140kW/4,000rpm	160kW/4,500rpm	220kW/5,500rpm
Maximum torque	440Nm/1,900rpm	360Nm/3,000rpm	425Nm/4,000rpm



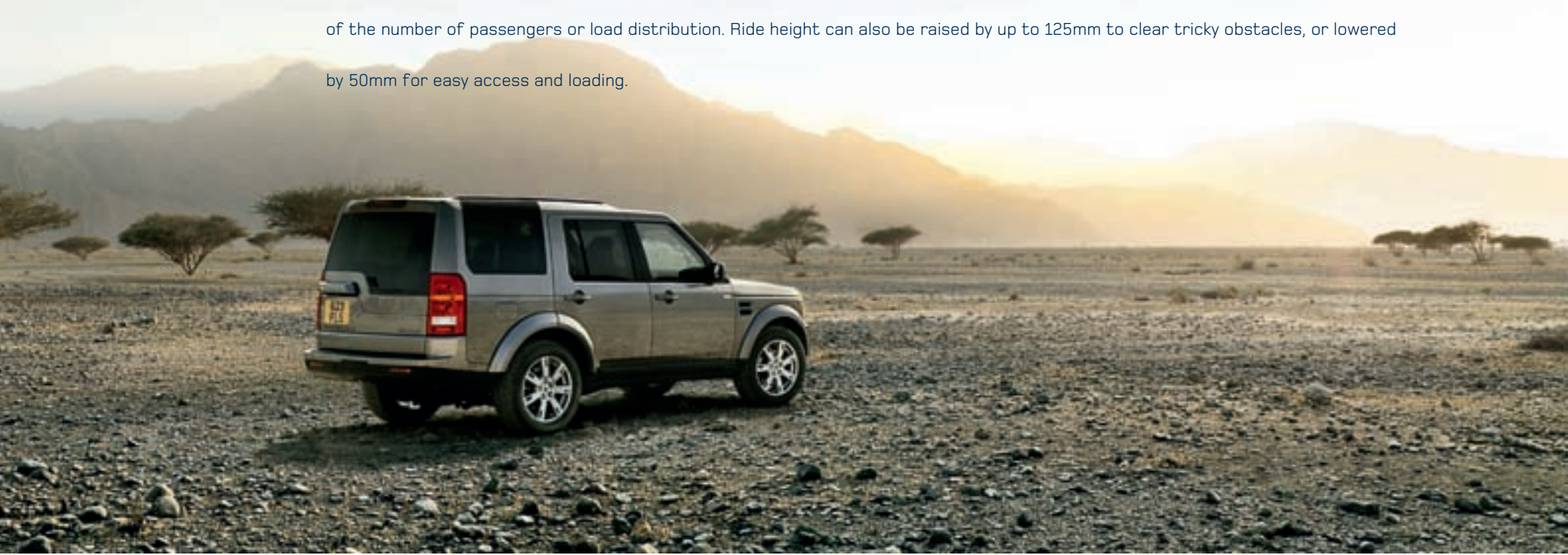
The above vehicle is shown with a number of styling accessories designed to complement the standard Discovery 3's design. Please contact your Dealer for further information.





LAND ROVER

Short front and rear overhangs. Exceptional ground clearance. They are a major part of Discovery 3's superior off-road capability. And they help enable maximum manoeuvrability over some of the most difficult terrains. Long-travel, all-independent suspension allows extreme wheel articulation, for example, ruts and rocks are conquered with ease. Four-corner cross-linked air suspension provides class-leading car-like ride and handling, both on and off-road, as well as a constant, level ride height, irrespective of the number of passengers or load distribution. Ride height can also be raised by up to 125mm to clear tricky obstacles, or lowered by 50mm for easy access and loading.

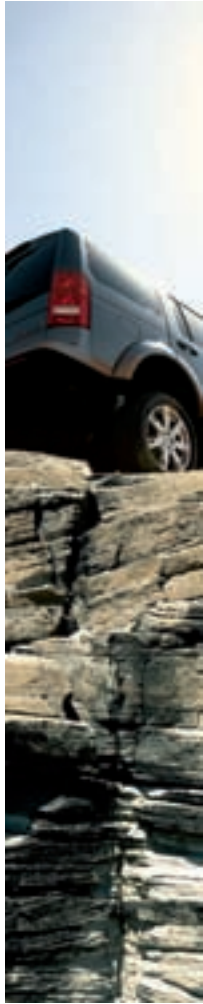




Whatever the surface Discovery 3 takes it on with confidence.

The Terrain Response® dial, standard on all derivatives, gives access to over sixty years of Land Rover 4x4 expertise and state-of-the-art dynamic technology. Cruising on tarmac, driving over grass, gravel or snow, taking on mud and ruts, crossing sand and crawling over rocks, Terrain Response® is your own off-road driving expert. Simply turn the dial and Discovery 3's engine, transmission, suspension and traction settings reconfigure for optimum drivability in all conditions.





The Land Rover G4 Challenge is the ultimate driving and multi-sport global adventure competition.

This gruelling series of events takes place over some of the planet's toughest roads and tracks. It tests both competitors and their vehicles to the absolute limit. From the choking dust of scorching deserts to the treacherous mud and boulders of high-altitude passes, there's no room for compromise. That's why every Discovery 3 taking part is equipped with genuine Land Rover G4 Challenge accessories. Designed by Land Rover, this range of eye-catching, premium quality accessories adds even more capability, versatility and style to any Discovery 3 and, of course, can complement all other Land Rover accessories. With Land Rover G4 Challenge accessories, you're ready to take on whatever the world throws at you.





EXTERIOR

A-Frame Protection Bar
VUB501210

Driving Lamp Kit
XQB500080

Driving Lamp Cover (not shown)
VUS500010

Expedition Roof Rack
CAB500021PMA

Front Lamp Guards
VUB501200

Rear Lamp Guards
VUB501380

Raised Air Intake
ADL780010

Body Coloured Wheel Arch Mouldings
DGP500580JEU - Cairns Blue

Body Coloured Mirror Caps
LR004865 - Cairns Blue

Inside the comfort zone

No matter how harsh conditions become on the outside, inside Discovery 3 takes complete care of your wellbeing. Just sit back and enjoy the view. Stadium-style seating and generous glass areas

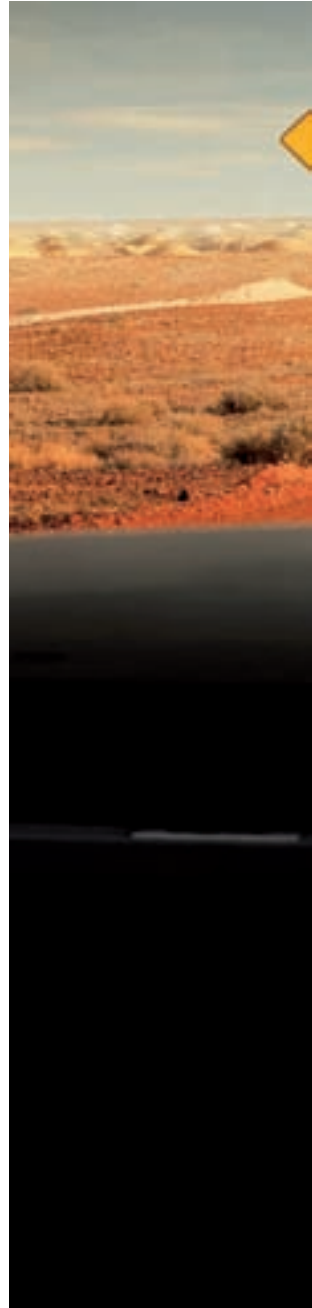
provide passengers with a panoramic view of the surroundings. What's more, when the optional third row of seats is fitted,

as many as seven adults can travel in complete comfort. And with front and optional rear air-conditioning providing airflow

to even the two rearmost places, all occupants stay fresh and relaxed in their own personal space. Soft, tactile leather,

in a choice of Ebony, Tundra or Almond, from the finest northern European hides, further enhances the interior and bestows

a feeling of premium quality and individuality.









The view's amazing up here. Remember how it felt? Discovery 3 features

the legendary Land Rover command driving position, which gives better visibility over the traffic ahead, for spotting hazards and viewing all four corners of the vehicle. This, combining with strong vertical and horizontal styling makes the design of Discovery 3 bold, practical and helps parking and off-road driving. Also adding to the driver's confidence and overall satisfaction is the ergonomically designed interior that puts key controls at the fingertips. Convenience options like Front Park Distance Control helps with tricky manoeuvres, while voice control, power lumbar support on the driver's seat and an eight-way adjustable passenger seat (both features available with electric seats only) and an auto dimming rear view mirror all add up to make life with Discovery 3 a breeze.



A reliable route through unpredictable places. Discovery 3 offers premium, state-of-the-art satellite navigation, which, because the system is DVD-based, supplies the data for an entire continent on a single disc. So you won't have to stop to look at a map whether you are hundreds of miles from the nearest town or in the thick of a city-centre rush hour.



In 72 kilometres take the first left

Using a high-resolution, 7 inch LCD wide-screen display with touch-screen functionality, the Premium Navigation System includes off-road navigation, with a way marking facility to enable a route to be retraced. In less isolated environments points of interest along the way, leisure facilities, restaurants and hotels or petrol stations can also be easily programmed.





First class space. Adding even more comfort and luxury to the interior of Discovery 3 HSE derivatives are Straight Grain Walnut and Grand Black Lacquer, and optional supple ruffled-style premium leather available in three colours.

The interior of Discovery 3 is versatile and highly functional. As many as seven adults can travel in complete comfort and enjoy a full-sized, forward facing seat, generous legroom and wide-opening doors for easy access. The flexible, versatile seating layout offers multiple configurations to suit almost every conceivable use, including one in which the central seat in the middle row turns into a table.

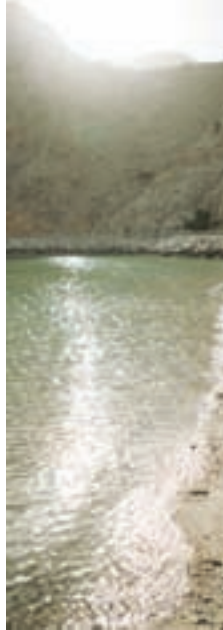


Seats seven big kids









Make light work of difficult loads with Discovery 3's two-piece, asymmetric tailgate design. Both upper and lower tailgates are made from resilient lightweight aluminium. In fact, the lower tailgate is so strong that, when the vehicle is parked, it can support the weight of two adults and be used as a viewing platform. Alternatively, the lower section can be used as a seat with the upper section providing a canopy. When fully open, the tailgate gives impressive access to the rear of the vehicle and comes into its own when loading large, bulky or heavy objects. The asymmetric portion of the lower tailgate offers a reduced reach-in distance when open and a lower load height when closed.





Even the rearmost passengers enjoy a glass roof in Discovery 3. Introducing the optional Alpine roof and spectacular views. While the combined reflective properties of the glass panel and interior sunblinds keep everyone cool and the cabin light and airy.







Key to Discovery 3's strength, safety and outstanding on-road and off-road dynamics is the Integrated Body-frame™. A Land Rover patented technology, it delivers more than the comfort, refinement and on-road attributes of a monocoque design. It sets new standards for off-road performance too. Other features include Anti-lock Braking System (ABS), Electronic Brake Assist (EBA) which supplies extra brake pressure in an emergency, and Electronic Traction Control (ETC) which helps maintain optimum grip. Dynamic Stability Control (DSC) and Active Roll Mitigation (ARM) work with the braking system designed to correct cornering over or understeer and to help maintain stability at all times. Up to eight airbags are fitted: the front seats have both front and side airbags with each seat row having its own curtain airbags. For a better view ahead on bends and a more effortless night-time drive, Discovery 3's optional Adaptive Front Lighting varies the headlamp light cast ensuring the beams follow the curve of the road.





Park and ride. Discovery is a vehicle that inspires such an adventurous spirit it naturally has a range of accessories to match.

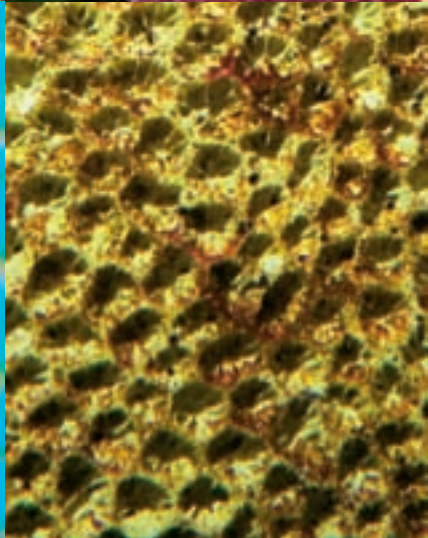
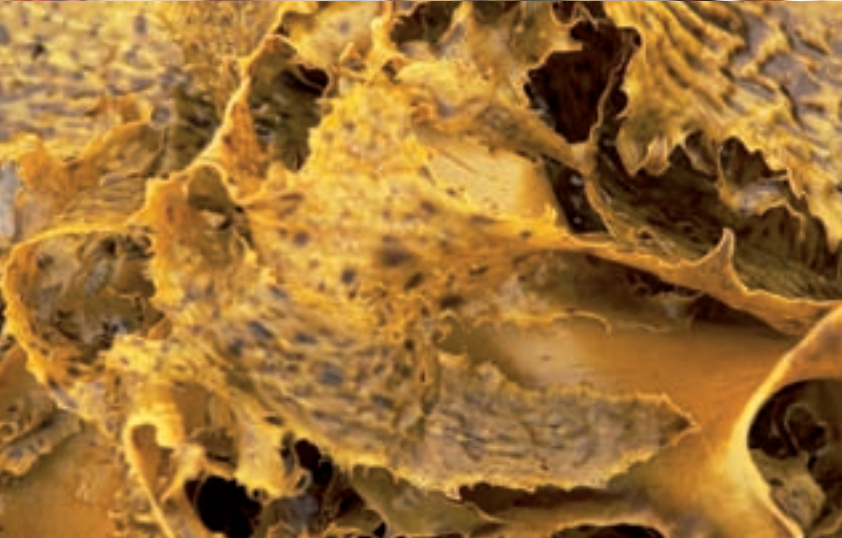
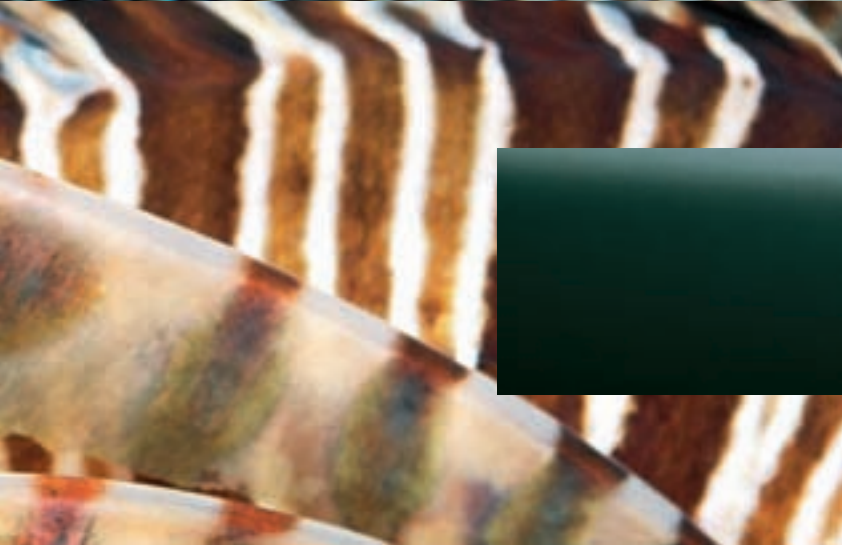
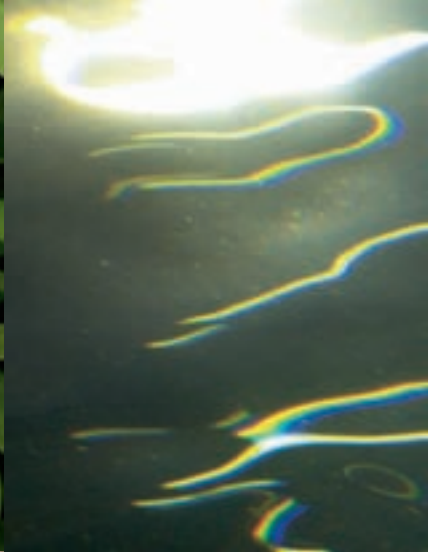
For instance, when it comes to transporting bikes, the two-piece asymmetric tailgate, when fully opened, enables easy access to the rear of the vehicle. A variety of waterproof loadspace protectors or mats are available to preserve the cargo area.

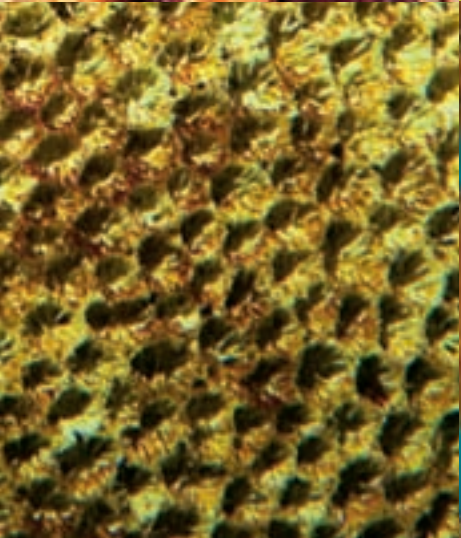
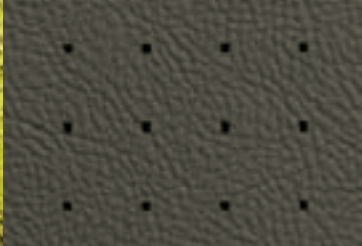




Discovery 3 makes a real statement. Now with the introduction of both the Body Styling Pack and Stainless Steel trim finishers, Discovery 3 creates an even bigger splash. With eye-catching changes, including new, body coloured, deeper front bumper and wheel arches, rear bumper upgrade and exhaust undertray, the latest LED rear lamps, bright extended roof rails and body coloured mirror caps and door handles. The attention to detail even runs to the power vent, which incorporates smart Land Rover signature styling.







ON THE OUTSIDE



ALASKA WHITE - SOLID



ATACAMA SAND - METALLIC



BOURNVILLE - METALLIC



IZMIR BLUE - METALLIC



LUGANO TEAL - METALLIC



RIMINI RED - METALLIC

Twelve eye-catching exterior colours. Choose from finishes featuring shimmering chrome particles, deep rich metallics, or solid white. To help your exterior colour choice co-ordinate with Discovery 3's interior trims, we recommend a number of combinations.



BUCKINGHAM BLUE - METALLIC



CAIRNS BLUE - METALLIC



GALWAY GREEN - METALLIC



SANTORINI BLACK - METALLIC



STORNOWAY GREY - METALLIC



ZERMATT SILVER - METALLIC

TO VIEW YOUR DISCOVERY 3 IN A CHOICE OF EXTERIOR COLOURS AND INTERIOR FINISHES GO TO WWW.LANDROVER.COM.AU

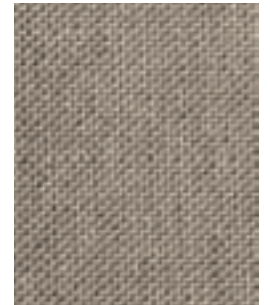


ON THE INSIDE

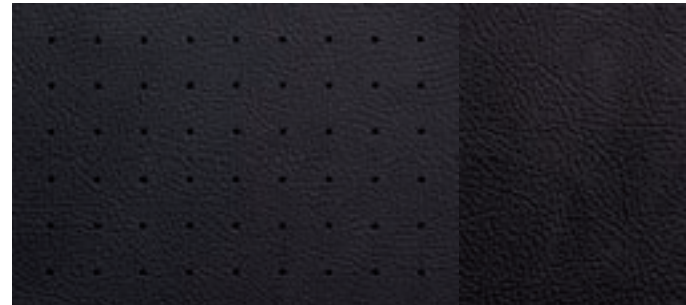
INTERIOR COLOUR CHOICES



ALMOND LEATHER



ALMOND CLOTH



EBONY LEATHER



EBONY CLOTH



TUNDRA LEATHER



TUNDRA CLOTH

Left: Premium leather rucked-style seat

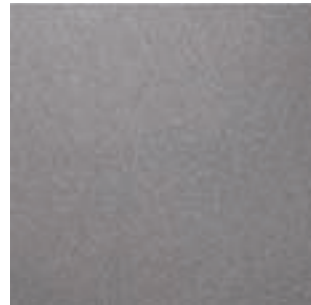
INTERIOR FINISH



GRAND BLACK LACQUER



STRAIGHT GRAIN WALNUT



BRUNEL METALLIC FINISH



Three interior trims each bring their own special personality to Discovery 3. They are Almond, Ebony and Tundra, which combine with a darker colourway and the standard Brunel Metallic Finish to provide an effective contrast. Nothing brings an extra feeling of prestige to the interior of Discovery 3 as much as opting for leather. The interior can be further enhanced with two real wood veneer finishes, Grand Black Lacquer and Straight Grain Walnut, which are applied to the facia end caps and the uprights of the centre console (available as a no cost option on HSE only).

INTERIOR FINISHES



Smoker's Pack is a no cost option.

INTERIOR TRIM

EXTERIOR COLOUR	ALMOND	EBONY	TUNDRA
Alaska White	□	R	R
Atacama Sand	■	R	■
Bournville	□	R	-
Buckingham Blue	R	R	□
Cairns Blue	R	□	-
Galway Green	■	□	□
Izmir Blue	R	R	-

EXTERIOR COLOUR	ALMOND	EBONY	TUNDRA
Lugano Teal	R	R	-
Rimini Red	■	■	□
Santorini Black	■	R	□
Stornoway Grey	■	■	R
Zermatt Silver	R	■	R

■ Designer's Choice R Recommended □ Combination is available - Combination is not available

WHEELS AND TYRES

A set of gleaming alloy wheels. Nothing highlights the character of a vehicle quite as effectively. An individual design is featured for each Discovery 3 model derivative, with an optional second style choice from accessories also available for those who like to add a touch of personalisation.



17 inch 5-Split Spoke Alloy Wheels
Tyre Specification:
235/70 AT



18 inch 5-Spoke Alloy Wheels
Tyre Specification:
255/60 AT



18 inch 10-Spoke Alloy Wheels
Tyre Specification:
255/60 AT



19 inch 7-Spoke Alloy Wheels
Tyre Specification:
255/55 AT

WHEELS AND TYRES

	V6 SE	TDV6 S	TDV6 SE	TDV6 HSE	V8 HSE
17 inch 5-Split Spoke Alloy Wheels - 235/70 AT	-	■	-	-	-
18 inch 5-Spoke Alloy Wheels - 255/60 AT	■	-	■	-	-
18 inch 10-Spoke Alloy Wheels - 255/60 AT	-	-	-	■	-
19 inch 7-Spoke Alloy Wheels - 255/55 AT	□	□	□	□	■
Full size Alloy Wheel Spare	■	■	■	■	■

■ Standard □ Option - Not available

Please note: When choosing vehicles fitted with specific wheel and tyre combinations or optional wheels and tyres, your intended use of the vehicle should be considered. Wheels with larger diameters and lower profile tyres may offer certain styling or driving benefits, but may be more vulnerable to damage, please discuss your requirements with a Dealer when selecting your vehicle and specification.

TECHNICAL

ENGINE, TRANSMISSION AND SUSPENSION

	V6 SE	TDV6 S	TDV6 SE	TDV6 HSE	V8 HSE
Six-speed manual gearbox	–	nco	–	–	–
Six-speed adaptive automatic gearbox	■	■	■	■	■
Four-corner air suspension with Terrain Response® (inc. trip computer)	■	■	■	■	■
Active rear locking differential	□	□	□	□	□

■ Standard □ Option – Not available nco No Cost Option

TRANSMISSION

	TDV6 Manual	TDV6 Auto	V6 Petrol Auto	V8 Petrol Auto
Transmission type	ZF S6-53	ZF HP26	ZF S6-53	ZF HP26
Gear Ratios (High range)				
6th	0.835	0.691	0.835	0.691
5th	1.0	0.867	1.0	0.867
4th	1.26	1.143	1.26	1.143
3rd	1.783	1.521	1.783	1.521
2nd	2.804	2.34	2.804	2.34
1st	5.08	4.171	5.08	4.171
Reverse	4.725	3.403	4.725	3.403
Final drive ratio	3.07	3.54	3.07	3.54
Transfer box ratio				
High	1:1	1:1	1:1	1:1
Low	2.93:1	2.93:1	2.93:1	2.93:1
Shift-on-the-move km/h				
High to low	20	40	20	40
Low to high	60	60	60	60

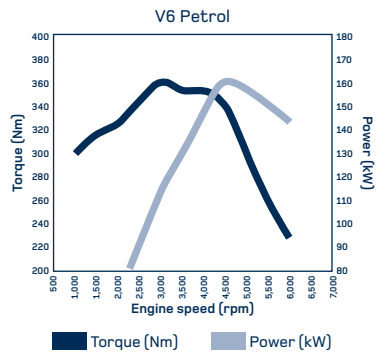
MAX SPEED IN GEARS

(High Range) km/h - Autos in 'D', with no CommandShift® or Sport selected				
	TDV6 Manual	TDV6 Auto	V6 Petrol Auto	V8 Petrol Auto
1st	42.71	36.99	42.71	36.99
2nd	77.46	67.19	77.46	67.19
3rd	121.64	105.5	121.64	105.5
4th	172.15	149.21	172.15	149.21
5th	180	180	180	180
6th	180	180	180	180
(Low Range) - Autos in 'D', with no CommandShift® or Sport selected				
1st	14.58	12.63	14.58	12.63
2nd	26.42	22.92	26.42	22.92
3rd	41.55	35.98	41.55	35.98
4th	58.78	50.91	58.78	50.91
5th	74.02	64.17	74.02	64.17
6th	88.52	93	88.52	93
Cd (drag co-efficient)	0.41 (0.40 on 235/70R17)			

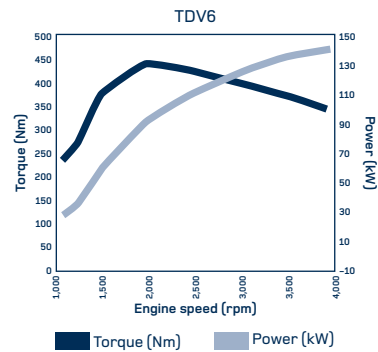
BRAKES

Description	TDV6	V6 Petrol	V8 Petrol
Front size mm	317	317	317
Type	Ventilated disc	Ventilated disc	Ventilated disc
Rear size mm	325	325	325
Type	Ventilated disc	Ventilated disc	Ventilated disc
Parking	Duo Servo	Duo Servo	Duo Servo

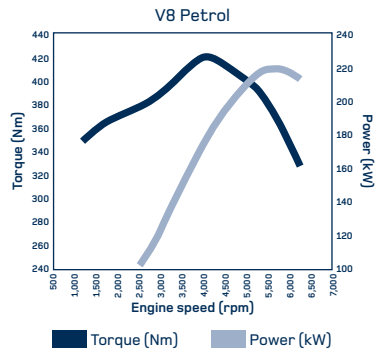
Discovery 3 petrol engine derivatives are exclusively fitted with the advanced, six-speed ZF automatic transmission. For the TDV6 models, there is a choice between either the six-speed automatic or a six-speed manual transmission.*



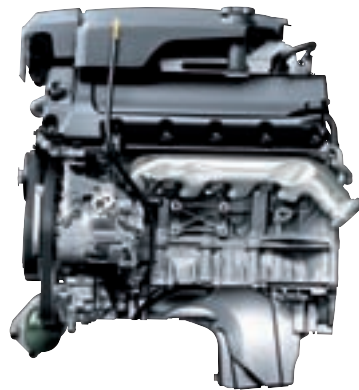
Max torque (Nm) 360Nm/3,000rpm
Max Power (kW) 160kW/4,500rpm



Max torque (Nm) 440Nm/1,900rpm
Max Power (kW) 140kW/4,000rpm



Max torque (Nm) 425Nm/4,000rpm
Max Power (kW) 220kW/5,500rpm



SAFETY & SECURITY

	V6 SE	TDV6 S	TDV6 SE	TDV6 HSE	V8 HSE
Active Roll Mitigation (ARM)	■	■	■	■	■
Airbags, row one driver and passenger front	■	■	■	■	■
Airbags, row one driver and passenger side	■	■	■	■	■
Airbags, side and head curtain (1st, 2nd & 3rd row*)	■	■	■	■	■
Central high mounted stop lamp	■	■	■	■	■
Dynamic Stability Control (DSC)	■	■	■	■	■
Electric Park Brake (EPB)	■	■	■	■	■
Electronic Brake Assist (EBA)	■	■	■	■	■
Four channel all terrain ABS (Anti-lock Braking System) with all round ventilated disc brakes	■	■	■	■	■

■ Standard □ Option – Not available *3rd row only with 7 seats fitted

STEERING

	Description	TDV6	V6 Petrol	V8 Petrol
Type		Assisted rack and pinion	Assisted rack and pinion	Assisted rack and pinion
Steering wheel height adjustment standard	Turns lock to lock	3.32	3.32	3.32
Turning circle	Kerb-to-kerb	11.45m	11.45m	11.45m
	Wall to wall	11.8m	11.8m	11.8m

The ZF 6HP26 transmission is one of the most advanced automatic transmissions in the world. As well as offering normal automatic operation, the gearbox offers a 'sport' mode that alters the timing of gearshifts and throttle response. It also features CommandShift® giving the driver full manual control of gear changes.

*Six-speed manual is a no cost option factory order.

FEATURES



Discovery 3 is packed with the latest, easy-to-use technology. The HI ICE Pack you get 8 speakers, passive subwoofer and **harman/kardon**® amplifier with in-dash 6 CD changer and steering wheel mounted audio controls is standard on the SE. The state-of-the-art Premium ICE Pack has 13 speakers, active subwoofer, rear seat headphone modules and **harman/kardon**® LOGIC 7® seven-channel digital surround sound system that adds premium 'theatre-style' audio quality to the driving enjoyment of the HSE. Add a chilled drink or snack from the lower centre console cooler box and the pleasure is complete. The optional Technology Pack includes Premium Navigation and Personal Telephone Integration for the extra assurance of knowing exactly where you are, both on and off-road, and Bluetooth® connectivity for safer hands-free communications. Other options include Rear Seat Entertainment with 2 headrest mounted screens with a 6 disc DVD changer for 2nd Row passengers.



*Depending on market availability

The Bluetooth® word mark and logos are owned by the Bluetooth SIG, Inc. and any use of such marks by Land Rover is under license. **harman/kardon**® and LOGIC7® are registered trademarks of Harman International Industries Incorporated.

SPECIFICATIONS

INTERIOR FEATURES	Option code	Order with	V6 SE	TDV6 S	TDV6 SE	TDV6 HSE	V8 HSE
5 seats with 65:35 split folding second row	BASE		–	■	–	–	–
Cloth Seats	BASE		–	■	–	–	–
Leather Seat Facing (with manual seat adjustment)	033AS		■	□	■	–	–
Leather Facing (with electric seat adjustment 8/8 way + Drivers Memory + Power Lumbar + Driver & passenger arm rests)	032CT		–	–	–	■	■
Load space cover – parcel shelf	063AH		■	■	■	■	■
Cruise control with leather steering wheel	065AE		■	■	■	■	■
Automatic climate control	022AX		■	■	■	■	■
Rear air conditioning	022AZ		□	–	□	■	■
Sunroof plus Alpine roof	019AG	022AZ	□	–	□	□	□
Lower centre console cooler box	045AC		□	–	□	■	■
Electric Steering Column	049AL		–	–	–	□	□
Cold Climate Pack - Heated Seats Front and Rear, Heated Front Screen, Windscreen Washers - Heated	072AC		□	□	□	□	□

AUDIO/COMMUNICATIONS	Option code	Order with	V6 SE	TDV6 S	TDV6 SE	TDV6 HSE	V8 HSE
6 speaker audio system with AM/FM radio and single CD	BASE		–	■	–	–	–
HI ICE PACK Eight speakers, passive subwoofer, harman/kardon branding, audio amplifier, side screen antenna amplifier scanning diversity, in-dash six CD changer, steering wheel mounted audio controls	025GP		■	–	■	–	–
PREMIUM ICE PACK harman/kardon® LOGIC7®, 13 speakers, active subwoofer, DSP amplifier, rear seat headphone modules	025GQ		–	–	–	■	■
Rear Seat Entertainment	129AD		□	–	□	□	□

SAFETY AND SECURITY	Option code	Order with	V6 SE	TDV6 S	TDV6 SE	TDV6 HSE	V8 HSE
Four channel all terrain ABS with all round ventilated disc brakes	BASE		■	■	■	■	■
Electronic Brake Assist	BASE		■	■	■	■	■
Dynamic Stability Control	BASE		■	■	■	■	■
Active Roll Mitigation	BASE		■	■	■	■	■
Electric Park Brake	BASE		■	■	■	■	■
Row one driver & passenger front, side and head curtain airbags	BASE		■	■	■	■	■
Row two head curtain airbags	BASE		■	■	■	■	■
Remote central locking with alarm and immobiliser	BASE		■	■	■	■	■

COLOUR AND TRIM

	Option code	Order with	V6 SE	TDV6 S	TDV6 SE	TDV6 HSE	V8 HSE
Metallic, micatallic or pearlescent paint	024AZ		□	□	□	□	□
Interior colourway – Almond			nco	nco	nco	nco	nco
Interior colourway – Ebony			nco	nco	nco	nco	nco
Interior colourway – Tundra			nco	nco	nco	nco	nco
for Trim Codes, Model Applications & Colour / Trim Recommendations see attached guide							
Brunel finish facia	BASE		■	■	■	■	■
Straight Grain Walnut	088CI		–	–	–	nco	nco
Grand Black Lacquer	088EX		–	–	–	nco	nco

EXTERIOR FEATURES

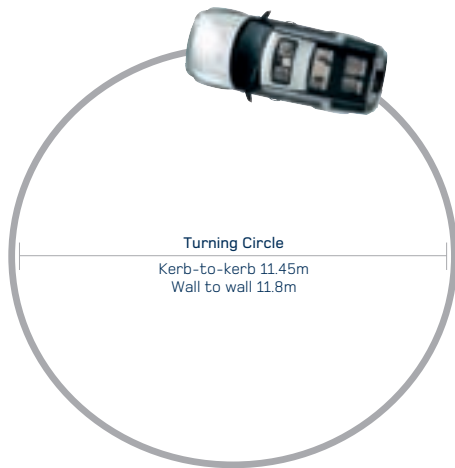
Four corner electronic air suspension with Terrain Response®	027BY		■	■	■	■	■
Exterior mirrors – power adjustable, heated	BASE		■	■	■	■	■
Power Fold – Exterior mirrors – power adjustable, heated	031BC		□	–	□	□	□
Halogen headlights	BASE		–	■	–	–	–
Bi-Xenon headlights	064CW		■	–	■	■	■
Adaptive Bi-Xenon headlights with cornering lamps (includes 064CW)	064DI		□	–	□	□	□
Park Distance Control – Rear	086EH		■	–	■	■	■
Park Distance Control – Front	086EG		□	–	□	□	□
Roof rails (also available as a retailer fit accessory for all models)	060AD		□	–	□	□	□

OPTION PACKS

7 SEAT PACK Row three seats and head airbag, accessory socket row three / load space, complex 35:30:35, row two seat, map lamps row three	033BI		■	□	■	■	■
TOW PACK Tow ball receiver & wiring sockets (Drawbar and ball available as an accessory)	028BT		■	■	■	■	■
PREMIUM LEATHER PACK (ELECTRIC SEATS) Premium leather upholstery, all 3 rows, Premium Carpet Mats Eight-way electric driver and Eight-way electric passenger seats, driver seat memory driver seat memory, power lumbar, drivers seat cushion pocket	032CX		–	–	–	□	□
BRIGHT PACK Front fog lamps, automatic headlights, headlight power wash, rain sensor, electro-chromic interior mirror, puddle & footwell lamps	017AF		–	■	■	■	■
TECHNOLOGY PACK Premium Navigation Personal Telephone Integration System	TECH PACK 025GL & 025DY		□	–	□	□	□

■ Standard □ Option – Not available nco No cost option

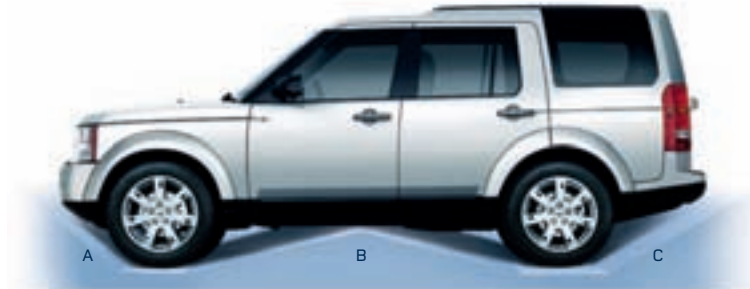
DIMENSIONS & CAPABILITY



Obstacle Clearance
Ground clearance up to 310mm (air suspension)
Standard ride height 185mm



Wading Depth (in off-road mode)
Maximum wading depth 700mm (air suspension only)
Normal wading depth 600mm



Off-road Geometry	A	B	C
Approach Angle	32.2°	22.8°	26.7°
Ramp Break Over Angle	37.2°	27.9°	29.6°
Departure Angle			

Four-coil suspension
Off-road ride height (air suspension)



Maximum load space – seats folded

Interior
Head room
1st row 1,020mm (1,027mm with Alpine roof)
2nd row 1,043mm (1,073mm with Alpine roof)
3rd row 983mm (1,018mm with Alpine roof)
Leg room
1st row 1,078mm
2nd row 955mm
3rd row 923mm
Shoulder room
1st row 1,503mm
2nd row 1,508mm
3rd row 1,087mm



Maximum load space behind row 2 – seats up

Luggage Capacity
Load space length behind:
1st row 1,950mm 7 seat (1,831mm 5 seat)
2nd row 1,124mm 7 seat (1,108mm 5 seat)
3rd row 338mm 7 seat
Width
1,235mm (1,146mm between wheel arches)
Height
1,027mm (1,058mm with Alpine roof)
Load space volume behind:
1st row 2,558 litres 7 seat (2,476 litres 5 seat)
2nd row 1,192 litres 7 seat (1,260 litres 5 seat)
3rd row 280 litres 7 seat

WEIGHTS & PERFORMANCE

Width 2,009mm mirrors folded
2,190mm mirrors out



Rear wheel track 1,612.5mm



Wheelbase 2,885mm



Front wheel track 1,605mm



Length 4,835mm

Minimum height

Roof options	Coil suspension	Air suspension (in access lower mode)
Fixed roof	1,887mm	1,837mm
Alpine roof	1,882mm	1,832mm
Roof rails	1,891mm	1,841mm

WEIGHTS (kg)

	TDV6 Manual	TDV6 Auto	V6 Petrol	V8 Petrol
Total (EEC kerb*)	2,494 min 2,708 max	2,504 min 2,718 max	2,486 min 2,700 max	2,536 min 2,704 max
Gross vehicle weight	3,180 min 3,230 max	3,180 min 3,230 max	3,180 min 3,230 max	3,180 min 3,230 max
Distribution of EEC kerb weight:				
Max front axle	1,296	1,302	1,284	1,280
Max rear axle	1,412	1,416	1,416	1,424
Towing				
Max towing (towing pack optional)	3,500	3,500	3,500	3,500
Unbraked trailer	750	750	750	750
Max. mass of vehicle and trailer combination (GTW)	6,680	6,730	6,730	6,730

*EEC kerb includes fluids, tools, spare and 75kg driver

PERFORMANCE AND FUEL ECONOMY

	TDV6 Manual	TDV6 Auto	V6 Petrol	V8 Petrol
Maximum speed km/h	180	180	180	193
Acceleration - secs 0-60mph	11.0	11.7	10.8	8.5
0-100km/h	11.7	12.7	11.6	9.1
Fuel economy				
Urban L/100km	11.1	13.1	21.0	20.9
Extra urban L/100km	8.1	8.5	11.9	12.1
Combined L/100km	9.2	10.2	15.2	15.0
Combined CO ₂ emissions (g/km)	244	270	359	354
Useable capacity fuel tank (Litres)	82.3	82.3	86.3	86.3
Drive by noise/dB	73.0	71.0	72.2	72.7

Fuel consumption figures: The results given here do not express or imply any guarantee of the fuel consumption of any particular vehicle with which this information may be supplied. Vehicles are not individually tested and there are inevitable differences between individual vehicles of the same model. The vehicle may also incorporate particular modifications. Furthermore, the driver's style and road traffic conditions, as well as the extent to which the vehicle has been driven and the standard of maintenance, will affect its fuel consumption.

OUR PLANET

OUR COMMITMENT

to a sustainable future. From the design of our vehicles and the way we build them, to how and where we use them, Land Rover is committed to sustainable development. We're committed to reducing our impact on the environment and are working in four key areas.

ENVIRONMENTAL TECHNOLOGY.

In 2007 we announced a £700m joint investment into new technologies to improve the environmental performance of our vehicles. Building on the innovation of the Land_e concept, the first of these technologies will be the stop-start engine in our diesel manual Freelander 2. In 2008 we revealed our new concept vehicle, the LRX; a Land Rover in body and spirit, but conceived as a hybrid 2.0 litre diesel, with potential CO₂ emissions of 120g/km.

SUSTAINABLE MANUFACTURING.

World class manufacturing facilities. Certified to ISO14001 since 1998. Our manufacturing facilities at Solihull and Halewood have reduced emissions by around 4 percent year on year, over the last 5 years. Since 1997 we have reduced emissions in our Solihull plant by 30 percent. Our TDV6 and TDV8 engines are made in a manufacturing plant part powered by wind turbines. In addition, we're offsetting all CO₂ produced by the manufacturing assembly of Land Rover vehicles at both plants. Partnered with specialist organisation Climate Care, our offset projects include a wind farm in China and hydro electric generators in Tajikistan.

CO₂ OFFSETTING. In 2006 we launched a pioneering programme to offset CO₂ emissions for the first 45,000 miles of all new Land Rovers in participating countries. The first automotive company to offset 100 percent of our manufacturing assembly CO₂ emissions, we are also offsetting the energy emissions of Land Rover Dealers and Experience centres across the UK.

OUR PRP

GLOBAL CONSERVATION AND HUMANITARIAN PROJECTS.

Land Rover vehicles are used by conservation and humanitarian organisations worldwide and are often first choice for difficult tasks. Organisations include the Born Free Foundation, Biosphere Expeditions, Royal Geographical Society (with IBG), China Exploration and Research Society and Earthwatch Institute. Our projects are diverse, ranging from an initiative to help with the protection of rare wolves in Ethiopia, to a project funded by our CO₂ offset programme which provides efficient cooking stoves to rural parts of Uganda. The partnership between the International Federation of Red Cross and Red Crescent Societies and the Land Rover G4 Challenge aims to generate over £1m over the next two challenges.

OUR PLANET. 'Drive responsibly on and off-road'. We take our responsibility to our planet very seriously. We teach responsible on and off-road driving to help reduce the impact on the environment and encourage drivers to understand the full potential and unique breadth of capability of our vehicles.

To find out more, and to see our progress, visit www.landrover.com/ourplanet

www.landrover.com/ourplanet

www.landrover.com.au

WARRANTY. A comprehensive manufacturer's warranty is a feature of every Land Rover vehicle and extends to any genuine Land Rover accessories fitted by a Land Rover Retailer. The warranty period for the vehicle is three years/100,000 kilometres. In addition, the paint surface is also covered for three years/100,000 kilometres and the body work covered for corrosion for six years.

LAND ROVER ROADSIDE ASSISTANCE. All Land Rover vehicles purchased in Australia benefit from complimentary Land Rover Roadside Assistance service for the length of the new car warranty. This covers you Australia-wide 24 hours per day every day. And because it is Land Rover Assistance, help will also be provided if you become bogged or disabled on roads that only four-wheel drives can travel.

CUSTOMER CARE. Land Rover Australia has a dedicated Customer Care Centre to assist owners who may have a general query. Owners seeking this level of assistance are invited to phone our Customer Care Centre on the toll-free number 1800-625-642. Land Rover ownership includes a package of benefits designed to provide high standards of after sales care and support.

LAND ROVER FINANCIAL SERVICES. Just as Land Rover lets you tailor a vehicle to your specific requirements, we offer you the same service when it comes to finance. You can arrange to purchase and finance your Land Rover from the people who know it best – your Land Rover Retailer. Your Land Rover Business Manager can explain the full range of finance options available from Land Rover Financial Services and provide expert advice to help tailor a finance package to best suit your needs. To discover more about Land Rover Financial Services visit your nearest Land Rover Retailer or visit www.landroverfinancialservices.com.au or the link at www.landrover.com.au

IMPORTANT NOTICE: This brochure, produced by Land Rover Australia, offers a general guide to Discovery 3 product specifications. All details are believed to be correct as of June/2008. However, we are constantly striving for improvement and therefore reserve the right to alter specifications without notice. Accordingly this brochure should not be regarded as an infallible guide to the correct specifications, nor does it constitute an offer or sale of any particular vehicle. Distributors and retailers are not agents of Land Rover Australia and have no authority to bind Land Rover Australia to any expressed or implied undertaking or representation. Please drive responsibly off-road.



Please recycle this brochure after use

Premier Automotive Group Australia Pty Ltd
Trading as Land Rover Australia
ABN 86 004 352 238
65 Epping Road, North Ryde NSW 2113
Locked Bag 2214, North Ryde NSW 1670
Telephone: 1800 809 308

www.landrover.com.au

©Premier Automotive Group Australia Pty Ltd 2006
Publication Number: LRML 2685/08



BY APPOINTMENT
TO HM THE QUEEN
MANUFACTURERS OF
LAND ROVER VEHICLES
LAND ROVER, WARWICK



BY APPOINTMENT
TO HRH THE DUKE OF EDINBURGH
MANUFACTURERS OF
LAND ROVER VEHICLES
LAND ROVER, WARWICK



BY APPOINTMENT
TO HRH THE PRINCE OF WALES
MANUFACTURERS OF
LAND ROVER VEHICLES
LAND ROVER, WARWICK



GO BEYOND