

DISCOVERY 4



GO BEYOND





Introduction

New look, new style, new Discovery 4

PAGES
2-7

Tough luxury

An all-new interior that's more refined, more premium

PAGES
8-11

Interior

Stadium seating and versatile cabin design

PAGES
12-19

Driving technology

New engines, new dynamics

PAGES
20-21

Breadth of capability

All-road capability and Terrain Response®

PAGES
22-27

Peace of mind

Smart technology, useful technology

PAGES
28-31

Specification and choices

Accessories, exterior colours, interior colours and wheels

PAGES
32-39

Technical data

Engines, technical data, dimensions, capability and weights

PAGES
40-45

Sustainability

Finance

PAGES
46-48



New Discovery 4. Bold, flexible and more luxurious. Instantly recognisable as a Land Rover, it features a new progressive, more contemporary exterior. A fresh attitude that gives new Discovery 4 a more refined, more modern presence on-road. And off-road.





LAND ROVER





New Discovery 4 features striking new headlamp styling, incorporating the unique Land Rover 'night-time' signature, a new two bar lattice grille and a new re-profiled front bumper with improved aerodynamics. Also new are three exhilarating exterior body colours, Nara Bronze, Ipanema Sand and Bali Blue, which join the distinctive, new Discovery 4 line-up.

New Discovery 4. Always original with its distinctive profile, key design features become even more integrated and premium. There are body coloured painted door mirrors, wheel arch flares, rear appliqué panel and new Oberon finish door handles across the range. Plus new jewel-like rear lamps, new front fenders and new 19 inch* lightweight alloy wheels.

*Model specific availability.





There is a new centre console with an integrated, flowing design. There is a new In-Car Entertainment system: a new, full-colour, Infotainment Touch-screen* and new more comfortable, more supportive seats both front and rear. Ergonomics are improved too. Driver information is accessed more intuitively and is presented in a clearer, more immediate format. Menus and graphics are upgraded, while functionality is increased.

*Model specific availability.

Tough luxury. The sumptuous, more tactile all-new interior for new Discovery 4 provides increased levels of craftsmanship and comfort. Meticulous attention to design and detail, such as the seats, that is without compromise. Materials are more premium, creating a superior ambience of quality and prestige. Fine touches, such as double stitching on the fascia, are unambiguous expressions of the vehicle's prestige.







The Terrain Response® control is easier to reach in its new, more prominent position at the base of the centre console. Door casings have also been redesigned for added practicality. And then there are those small, practical details that just get better and better: stowage space around the centre console is extra generous; the useful door pockets are improved and LR-TDV6 3.0 HSE and LR-V8 models benefit from their own dedicated lighting.

Inside, the all-new interior is more premium and rewarding to touch than ever before. Its innovative design maximises all available space. While the truly flexible seating layout offers multiple configurations and up to seven full-size adult seats.





harman/kardon





The view's amazing up here. And it's as good for the passengers as it is for the driver. The interior of new Discovery 4 offers both supreme luxury and class-leading flexibility by offering stadium seating and second and third rows of seats that can be folded independently of each other.



Monday: Airport



Tuesday: School bus



Wednesday: Band practice



Thursday: Garden centre



Friday: Night out at the theatre



It's the weekend...

Proper grown-up seating. As many as seven adults can travel in complete comfort and enjoy a full-sized, forward facing seat, generous legroom and wide-opening doors for easy access. The flexible, versatile seating layout offers multiple configurations to suit almost every conceivable use.

Make light work of difficult loads with new Discovery 4's two-piece, asymmetric tailgate design. Both upper and lower tailgates are made from resilient lightweight aluminium. In fact, the lower tailgate is so strong that, when the vehicle is parked, it can support the weight of two adults and be used as a viewing platform. Alternatively, the lower section can be used as a seat with the upper section providing a canopy. When fully open, the tailgate gives impressive access to the rear of the vehicle and comes into its own when loading large, bulky or heavy objects. The asymmetric portion of the lower tailgate offers a reduced reach-in distance when open and a lower load height when closed.





Making the passenger experience sublime. Thanks to new Discovery 4's bold, innovative design and upright side profile, there is more head and shoulder room than in competitor vehicles. Stadium seating ensures that all occupants share clear views of the surrounding landscape. Further strides have also taken place with regards to refinement, including the reduction of noise intrusion and the inclusion of new, high-quality materials.

New Discovery 4 features the legendary Land Rover command driving position, which gives better visibility over the traffic ahead for spotting hazards and helps parking and off-road driving. The command driving position brings a sense of control and reduces stress and fatigue as all key controls are close to hand and information is easy to read.





Making the driving experience effortless. The new, full-colour Infotainment Touch-screen, standard on LR-TDV6 3.0 HSE and LR-V8, is located at the top of the new centre console. This provides all audio and navigation controls and is easier to use and gives more intuitive access. It reduces the number of conventional controls required on the console and frees up space for an eye-catching analogue clock, which adds to the premium ambience of the interior. Available In-Car Entertainment Systems include **harman/kardon®**, premium LOGIC7® system incorporating premium 'theatre-style' audio quality.

The centrepiece of driver information is the new instrument panel with its 5 inch Thin Film Transistor (TFT) display. It shows vehicle information as well as displaying highlights from the Infotainment screen. Importantly, the display can be personalised using a simple menu system controlled by the thumb controls on the steering wheel that enable you to control audio and cruise control functions.

harman/kardon® and LOGIC7® are registered trademarks of Harman International Industries, Incorporated.



New levels of power, economy and refinement. Two new engines for new Discovery 4, both setting new standards for performance.

The new LR-TDV6 3.0 Advanced Sequential Turbo Diesel Engine uses the latest materials and sequential turbochargers to optimise responsiveness by delivering increased torque at very low revs. This is one of the most technically advanced diesel engines in the world and uses unique, parallel sequential turbochargers for the first time in a V-engine.

The new LR-V8 Petrol Engine improves driveability and harnesses the very latest technology for outstanding overall performance. For instance, it includes a torque actuated dual independent variable camshaft phasing system, shared with the new 2010 Range Rover Vogue and Range Rover Sport, to make the vehicle more reactive to driver inputs and driving conditions.

The high-technology 2.7 litre TDV6 Diesel provides smooth torque distribution, flexibility, refinement and economy thanks to the latest common rail technology and innovative materials.



THE NEW LR-TDV6 3.0 ADVANCED SEQUENTIAL TURBO DIESEL ENGINE uses a sequential mode boosting system to increase the air density entering the engine's cylinders, enabling a correspondingly greater amount of fuel to be injected for increased power output and economy. This is a two turbocharger, two-stage system, which makes the engine more responsive as well as delivering class-leading torque and power. The primary stage, variable nozzle turbine operates over the entire rev range. Unlike in most single boost systems, the primary stage provides maximum performance up to 2,500rpm. Above 2,500rpm the secondary stage, fixed geometry turbine switches into operation splitting the gas flow between the two turbochargers.

THE NEW LR-V8 PETROL ENGINE'S camshaft torque actuated dual independent Variable Camshaft Timing system continuously controls camshaft timing to deliver an optimum balance of power, efficiency and emissions. The chain driven camshaft timing units are mounted on the end of each camshaft to advance or retard camshaft timing and alter the camshaft to crankshaft phasing. Camshaft Profile Switching features two completely different intake camshaft profiles machined into the same camshaft. The engine management system chooses the camshaft profile depending on running conditions and torque demands: one profile for low-speed/low-load driving; the other, with longer valve lift, for higher-speed/higher-loads.

LR-3.0 TDV6 engine upgrades benefit from the latest investment in e_TERRAIN TECHNOLOGIES, specifically to reduce CO₂ emissions and improve fuel consumption. An Intelligent Power Management System includes Smart Regenerative Charging so the battery is charged when it is most economical to do so. Idle speeds are reduced and a 'metering mode' added to the diesel fuel injection system, delivering fuel at the exact rate needed - no more; no less.




THE FUEL INJECTION SYSTEMS ON BOTH NEW PETROL AND DIESEL ENGINES achieve high standards of durability, combustion performance and refinement. The ultra-precise machining of high-pressure injectors ensures a fine-quality spray of fuel into the combustion chambers and optimises combustion conditions both at cruising speed and during acceleration. Both engines use a high-pressure, steel fuel rail. Fuel in the rail is detected by a high-pressure sensor which controls flow into the rail by adjusting an electromagnetic valve in the high-pressure fuel pumps' outlet.

Fuel injection system shown here is on the Petrol engine. Shared technology is also available on the diesel engine.



INCREASED SERVICE INTERVALS AND REDUCED COST OF OWNERSHIP are the result of the very latest design, engineering and manufacturing techniques, as well as the use of technologically advanced materials and components. The new petrol and diesel engines offer optimum performance combined with premium refinement and significant reductions in Noise, Vibration and Harshness (NVH). All engines have been developed to cope with the specific requirements of a Land Rover product: strength and durability when operating in dusty environments, on steep inclines and wading through rivers.

A scenic view of a winding road along a rocky coastline. The road curves along the edge of a dark blue sea, with steep, rocky hills on either side. The sky is a pale, hazy blue. The overall atmosphere is serene and adventurous.

Dynamic performance on-road. New Discovery 4 features advanced technology that helps keep the driver connected with the road and provides an enhanced, more engaged and entertaining drive. It makes getting behind the wheel and heading for the open road pure pleasure. Four-corner electronic air suspension maintains a smooth, constant ride regardless of the distribution of passengers and size of load. Brakes are upgraded to handle the extra power and torque of the new engines.

New Discovery 4 also features Roll Stability Control, an advanced safety system which intervenes to help maintain stability. For the keener driver a new variable ratio steering system is fitted for greater manoeuvrability at low speed and improved driver confidence at higher speeds. Improvements to the suspension geometry include a new, stiffer front anti-roll bar. The result is outstanding, car-like handling that does not compromise extreme axle articulation and, consequently, the off-road ability of the vehicle.

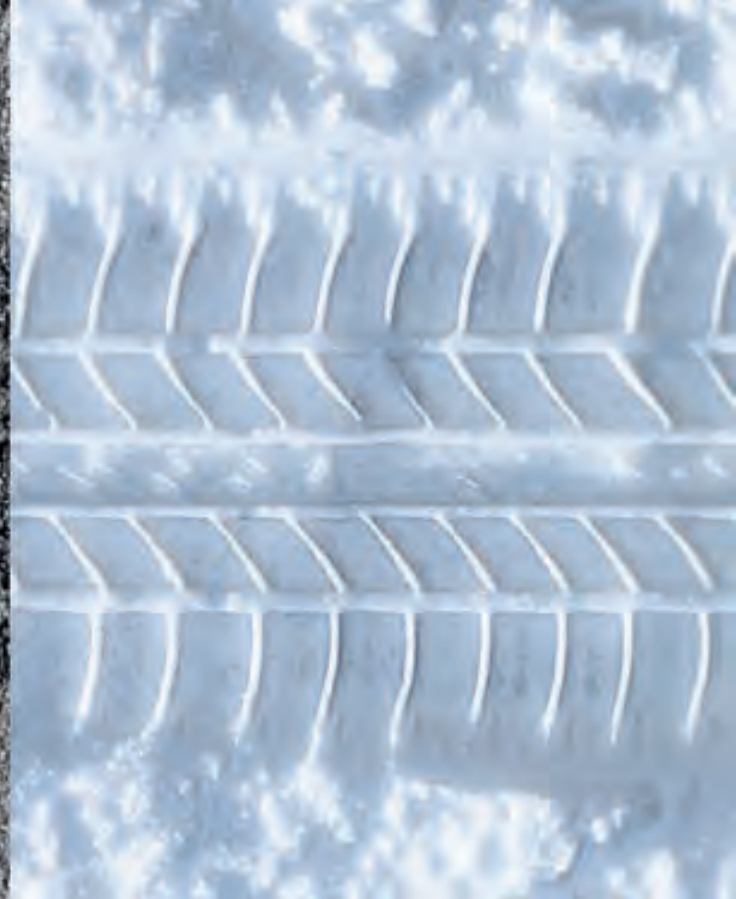
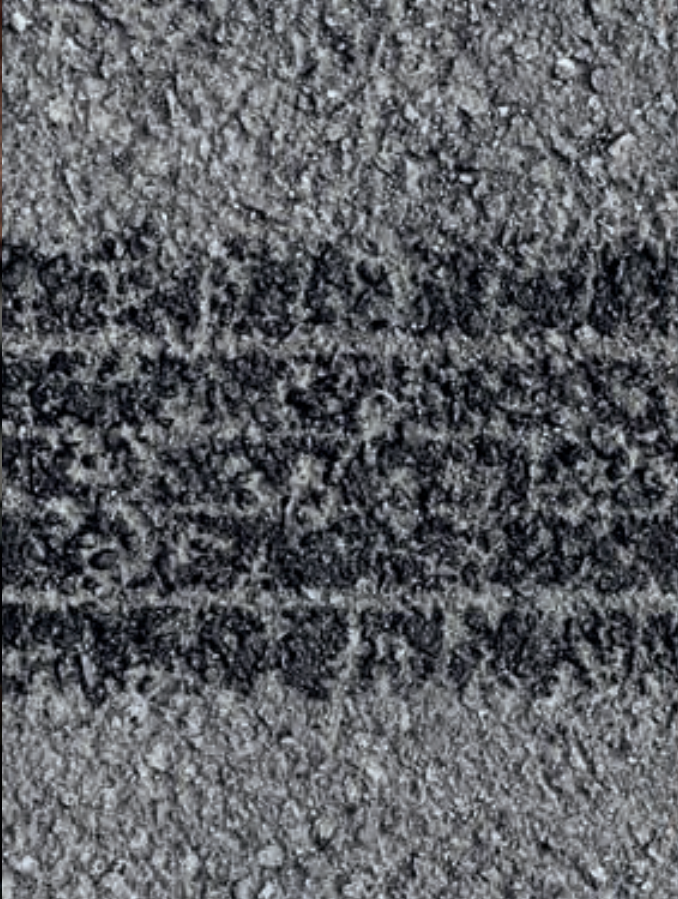




Short front and rear overhangs. Exceptional ground clearance. Increased performance and torque from the new LR-TDV6 3.0 Advanced Sequential Turbo Diesel engine and the new LR-V8 Petrol Engine. They make major contributions to new Discovery 4's superior off-road capability. And they help enable maximum manoeuvrability over some of the most difficult terrains. Long-travel, all-independent suspension allows extreme wheel articulation. Ruts and rocks, for example, are conquered with ease.

Four-corner cross-linked air suspension provides class-leading car-like ride and handling, as well as a constant, level ride height, irrespective of the number of passengers or load distribution. Ride height can also be raised by up to 125mm to clear tricky obstacles, or lowered by 50mm for easy access and loading.





Whatever the surface, new Discovery 4 takes it on with confidence. The Terrain Response® dial, gives access to over 60 years of Land Rover 4x4 expertise and state-of-the-art dynamic technology. Enhanced with Land Rover's latest e_TERRAIN TECHNOLOGIES, specifically to reduce CO₂ emissions, Discovery 4's Intelligent Power Management System on LR-TDV6 3.0 and LR-V8, shared with the Range Rover Vogue and Range Rover Sport, compliments all Terrain performance with energy saving technology.



Cruising on tarmac, driving over grass, gravel or snow, taking on mud and ruts, crossing sand and crawling over rocks, Terrain Response® is your own off-road driving expert. Simply turn the new, more conveniently positioned dial and new Discovery 4's engine, transmission, suspension, throttle and traction settings reconfigure for optimum driveability in all conditions. New Discovery 4 takes this technology a further step forward and includes new Sand Launch Control and enhanced traction during Rock Crawl Pre-charge which is a function that applies a small amount of brake pressure to each brake calliper during very low speed driving. The new Sand Launch Control system helps prevent the wheels spinning when moving off from a standstill and the vehicle 'digging in'. Once the vehicle reaches the appropriate speed the slip threshold is returned to its normal state.



OPTIONAL AUTOMATIC HEADLAMPS WITH HIGH BEAM ASSIST, only available with Bi-Xenon Headlamps, detect vehicle headlamps/tail lamps and dip the high beam until the light source is out of range. The system is able to distinguish between automotive and non-automotive light sources.



ADAPTIVE FRONT LIGHTING. For more relaxed night-time driving, Adaptive Lighting varies the light cast ahead of the vehicle so that the beams follow the curve of the road. Model specified availability.



DYNAMICS AND BRAKES. Upgraded suspension geometry, including a new, stiffer front anti-roll bar, gives increased driver-focus and improves on-road dynamics without compromising off-road ability. The result is outstanding, car-like handling that does not compromise extreme axle articulation and, consequently, the off-road ability of the vehicle. Brakes are enhanced for improved feel and performance on the new engines with larger diameter discs. Added confidence and capability from New Discovery 4.



STEERING WHEEL CONTROLS. New steering wheel design with revised switch layout for driver information and remote audio controls. Cruise control and telephone controls are standard on all models. Heated steering wheel is optional as part of the Cold Climate Pack.



THE AWARD WINNING TERRAIN RESPONSE SYSTEM optimises the vehicle set-up for virtually all on-road or off-road driving situations, with five different settings to suit different terrains such as grass/gravel/snow, sand, mud and ruts and rock crawl.

GRADIENT RELEASE CONTROL. New, patented Land Rover system works with Hill Descent Control, across terrains such as rock, gravel and sand, for more controlled, confident descents. Works in reverse and first gear.



AIR SUSPENSION. Four-corner independent Air Suspension with variable ride height and electronic cross-linking for a constant level ride height irrespective of load. Ride height can be raised up to 125mm to clear obstacles or lowered by 50mm for easy access and loading.



TRAILER STABILITY ASSIST. A new system helps make towing safer by detecting trailer oscillations and employing selective braking to correct potentially dangerous situations.

TOW ASSIST. This innovative functionality has the capability to predict the direction of a trailer when reversing. An on-screen information prompt appears and confirms when a trailer is attached and guides the driver. An optional feature due to the mounting location of the rear view camera is Tow Hitch Assist that helps the driver to precisely couple the tow bar with a tow hitch.



ELECTRIC PARKING BRAKE (EPB). A switch next to the gear selector to electrically apply and release the parking brakes on the rear wheels. A simple pull of the lever applies the brake manually and a press releases it. The parking brake will also release automatically upon drive away.



PUSH BUTTON START. Once the vehicle has been accessed using the remote transmitter, the device may be stored in a pocket or bag to allow starting without remote transmitter or key being docked. The **Keyless Entry** system provides even greater convenience. When within close proximity of the vehicle along with the remote Smart key, simply open the door, get in and push the Start button. Model specific availability.



PARKING AID – REAR VIEW CAMERA. Camera provides rearward view from the new, full-colour Infotainment Touch-screen. Works in conjunction with rear parking aid. **Surround Camera System** comprises 5 digital cameras to provide near 360 degree view surrounding vehicle to aid low speed manoeuvring via new, full-colour Infotainment Touch-screen. Can be customised to provide a single camera view or multiple images. Functions include: Parking Aid – Rear View Camera, All Round Vision, Junction View. Also includes Tow Assist and Tow Hitch Assist. Model specific availability.



NEW INSTRUMENT PANEL with 5 inch (12.7cm) TFT display for trip information, primary vehicle information and warnings.



NEW, FULL-COLOUR INFOTAINMENT TOUCH-SCREEN. Incorporates full control and functionality over integrated systems such as navigation, audio, entertainment systems, camera systems, 4x4 information and vehicle settings.





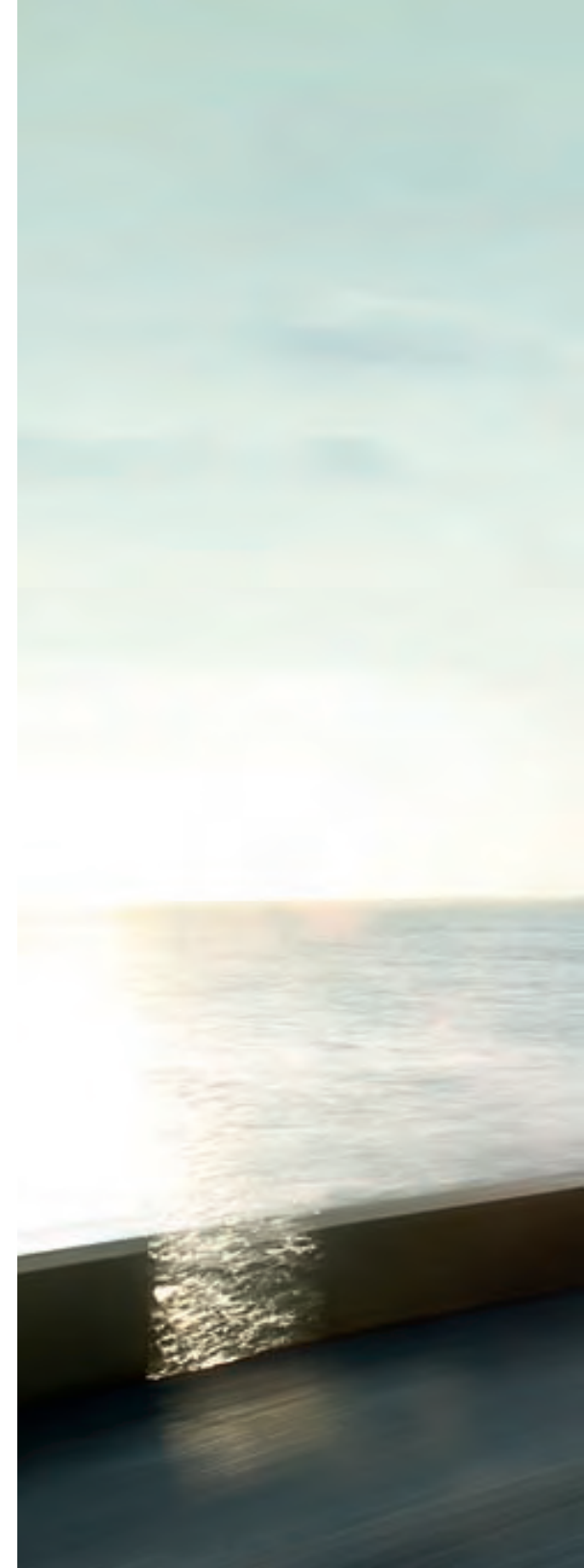
Key to new Discovery 4's strength, safety and outstanding on-road and off-road dynamics is the Integrated Body-frame™. A Land Rover patented technology, it delivers more than the comfort, refinement and on-road attributes of a monocoque design. It sets new standards for off-road performance too. Other features include Anti-lock Braking System (ABS), Emergency Brake Assist (EBA) which supplies extra brake pressure in an emergency, and Electronic Traction Control (ETC) which helps maintain optimum grip. Dynamic Stability Control (DSC) and Roll Stability Control work with the braking system and are designed to correct cornering over or understeer and to help maintain stability at all times. Up to eight airbags are fitted: the front seats have both front and side airbags with each seat row having its own curtain airbags. For a better view ahead on bends and a more effortless night-time drive, new Discovery 4's Adaptive Front Lighting* varies the headlamp light cast, ensuring the beams follow the curve of the road. Automatic High Beam Assist detects oncoming or followed vehicles to switch between high and dipped beam.

*Model specific availability



A new, cutting edge development is the introduction of Tow Assist, a next-generation reversing aid that predicts the rearward trajectory of both vehicle and trailer. This helps the driver perform more accurate manoeuvres and is selected from the Touch-screen menu. Wide-view cameras on the vehicle give a clear field of vision; guidelines are superimposed over the resulting image to highlight the suggested reversing path for vehicle and trailer.

Other towing aids are Tow Hitch Assist and Trailer Stability Assist. The latter detects potentially dangerous trailer oscillations by monitoring vehicle behaviour such as a slight swing in response to trailer movements. It can initiate engine torque reduction and intervenes using the brakes to bring vehicle and trailer back under control. Tow Hitch Assist helps hitching a trailer to the tow ball.



New Discovery 4 is so capable and adaptable it can get straight to work across a huge variety of vastly differing terrain, conditions and roles.

Even so, some owners want to add their own stamp of individuality by tailoring their new Discovery 4 to their specific needs with a range of stylish, practical accessories. Accessories that are tough, versatile and bring an opportunity for personalisation to new Discovery 4. Importantly, these accessories can be added at any stage during the vehicle's life - not just when it's new.



EXTERIOR COLOURS



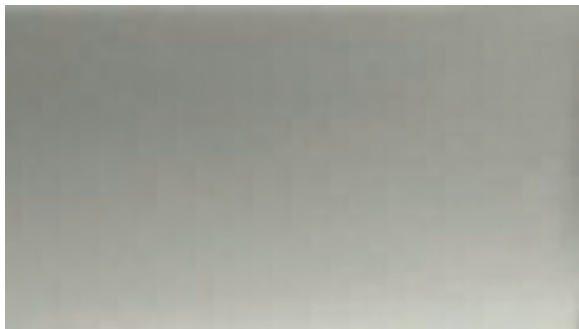
ALASKA WHITE - SOLID



BALI BLUE - METALLIC



BOURNVILLE - METALLIC



IPANEMA SAND - METALLIC



IZMIR BLUE - METALLIC



LUGANO TEAL - METALLIC



ZERMATT SILVER - METALLIC



MARMARIS TEAL - METALLIC*

*Marmaris Teal replaces Lugano Teal from January 2010



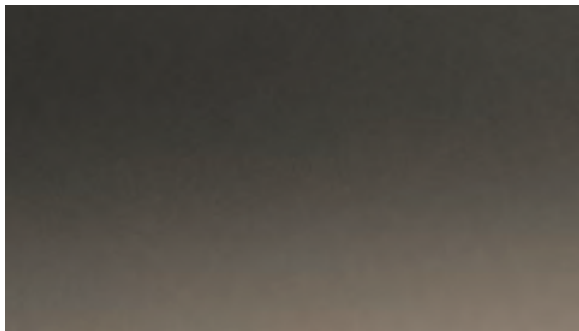
BUCKINGHAM BLUE - METALLIC



GALWAY GREEN - METALLIC



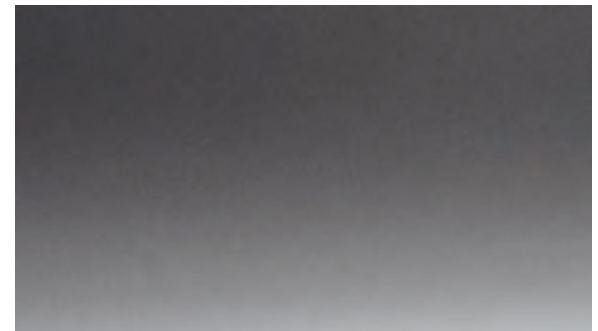
SANTORINI BLACK - METALLIC



NARA BRONZE - METALLIC



RIMINI RED - METALLIC



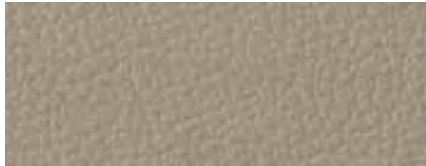
STORNOWAY GREY - METALLIC

Thirteen eye-catching exterior colours including new Nara Bronze, Ipanema Sand and Bali Blue. Choose from finishes featuring shimmering chrome particles, deep rich metallics, or bold solid colour.

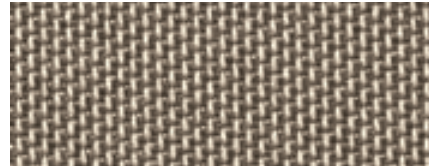
TO VIEW YOUR NEW DISCOVERY 4 IN A CHOICE OF EXTERIOR COLOURS AND INTERIOR FINISHES GO TO WWW.LANDROVER.COM.AU



INTERIOR CHOICES



ALMOND LEATHER



ALMOND CLOTH



EBONY LEATHER



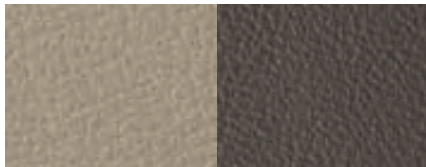
EBONY CLOTH



ALMOND PREMIUM LEATHER*



EBONY PREMIUM LEATHER*



ALMOND/ARABICA

*Electrically Adjustable Seat Bolsters standard
Almond interior is complemented by a choice of Nutmeg or Arabica to the top of the facia and door casings and Nutmeg carpets.

INTERIOR FINISH

Choice of interior finishes applied to the centre of the facia and upper door casings.



METEOR METALLIC FINISH



STRAIGHT GRAIN WALNUT



GRAND BLACK LACQUER

Left: Premium Leather ruched-style seat

Nothing brings an extra feeling of prestige to the interior of Discovery 4 as much as opting for leather or premium leather. Two interiors, both bringing their own special personality and they are Almond leather, complemented by Arabica on door upper trims and Ebony leather. The interior can be further enhanced with two real wood veneer finishes, Grand Black Lacquer and Straight Grain Walnut, which are applied to centre console and door panels (standard on LR-TDV6 3.0 HSE and LR-V8). Five cloth seats are also standard specification LR-TDV6 2.7. To help your exterior colour choice co-ordinate with new Discovery 4's interior trims, we recommend a number of combinations.

COLOURWAY	EBONY	ALMOND/ARABICA
SEAT COLOUR	Ebony	Almond
CARPET	Ebony	Nutmeg
FACIA TOP	Ebony	Arabica
DOOR UPPER TRIM	Ebony	Almond*
DOOR INSERTS	Ebony	Almond

*For Leather and Premium Leather seats the Door Upper trim will be Arabica.

EXTERIOR COLOURS

Alaska White	R	□
Bali Blue	■	—
Bournville	R	■
Buckingham Blue	R	—
Galway Green	□	R
Ipanema Sand	R	■
Izmir Blue	■	—
Lugano Teal	R	□
Marmaris Teal*	R	□
Nara Bronze	□	■
Rimini Red	■	□
Santorini Black	■	□
Stornoway Grey	■	□
Zermatt Silver	■	R

*Marmaris Teal available from January 2010

■ Designer's Choice R Recommended □ Combination is available — Combination is not available



A set of gleaming alloy wheels. Nothing highlights the character of a vehicle quite as effectively. An individual design is featured for each new Discovery 4 model derivative.



18 INCH 5-SPOKE ALLOY WHEELS
Tyre Specification: 255/60AT



19 INCH 7-SPOKE ALLOY WHEELS
Tyre Specification: 255/55AT



19 INCH 7-SPLIT SPOKE ALLOY WHEELS
Tyre Specification: 255/55AT



20 INCH 10-SPLIT SPOKE ALLOY WHEELS
Tyre Specification: 255/50AT

WHEELS AND TYRES

	TDV6 2.7	TDV6 3.0 SE	TDV6 3.0 HSE	V8 5.0
18 inch 5-Spoke Alloy Wheels - 255/60 AT	■	-	-	-
19 inch 7-Spoke Alloy Wheels - 255/55 AT	□	■	-	-
19 inch 7-Split Spoke Alloy Wheels - 255/55 AT	-	-	■	-
20 inch 10-Split Spoke Alloy Wheels - 255/50 AT	□	□	□	■
Full size Alloy Wheel Spare	■	■	■	■

■ Standard □ Option - Not available

Please note: When choosing vehicles fitted with specific wheel and tyre combinations or optional wheels and tyres, your intended use of the vehicle should be considered. Wheels with larger diameters and lower profile tyres may offer certain styling or driving benefits, but may be more vulnerable to damage, please discuss your requirements with a Dealer when selecting your vehicle and specification.

TECHNICAL

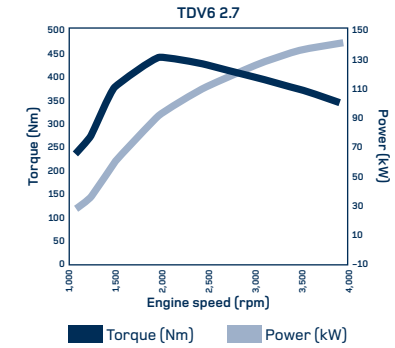
ENGINE, TRANSMISSION AND SUSPENSION

	TDV6 2.7	TDV6 3.0 SE	TDV6 3.0 HSE	V8 5.0
Six-speed adaptive automatic transmission	■	■	■	■
Four-corner air suspension with Terrain Response®	■	■	■	■
Active rear locking differential	□	□	□	■

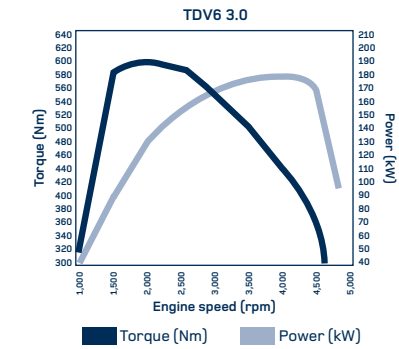
■ Standard □ Option – Not available

TRANSMISSION

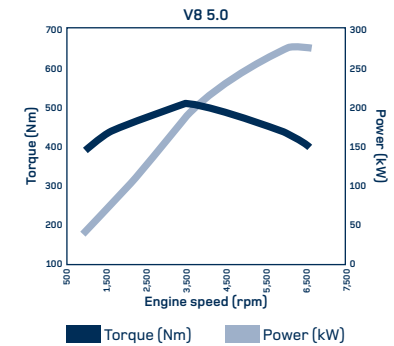
	TDV6 2.7 Auto	TDV6 3.0 Auto	V8 5.0 Auto
Transmission type	ZF HP26	ZF HP28	ZF HP28
Gear Ratios (High range)			
6th	0.69	0.69	0.69
5th	0.867	0.867	0.867
4th	1.14	1.14	1.14
3rd	1.52	1.52	1.52
2nd	2.34	2.34	2.34
1st	4.17	4.17	4.17
Reverse	3.4	3.4	3.4
Final drive ratio	3.54	3.54	3.54
Transfer box ratio			
High	1:1	1:1	1:1
Low	2.93:1	2.93:1	2.93:1



Max torque (Nm) 440Nm/1,900rpm
Max Power (kW) 140kW/4,000rpm



Max torque (Nm) 600Nm/2,000rpm
Max power (kW) 180kW/4,000rpm



Max torque (Nm) 510Nm/3,500rpm
Max Power (kW) 276kW/6,500rpm

MAX SPEED IN GEARS

(High Range) km/h - Autos in 'D', with no CommandShift® or Sport selected

	TDV6 2.7 Auto	TDV6 3.0 Auto	5.0 V8 Auto
1st	36	30	53
2nd	67	63	107
3rd	105	101	167
4th	149	136	195
5th	180	180	195
6th	180	180	195

(Low Range) - Autos in 'D', with no CommandShift® or Sport selected

	TDV6 2.7 Auto	TDV6 3.0 Auto	5.0 V8 Auto
1st	12	10	18
2nd	22	22	36
3rd	35	34	57
4th	50	46	75
5th	64	62	94
6th	93	88	130

Cd (drag co-efficient) 0.41 [0.40 on 235/70R17]

BRAKES

Description	TDV6 2.7	TDV6 3.0	5.0 V8 Petrol
Front size mm	317	360	360
Type	Ventilated disc	Ventilated disc	Ventilated disc
Rear size mm	325	350	350
Type	Ventilated disc	Ventilated disc	Ventilated disc
Parking	Duo Servo	Duo Servo	Duo Servo

SAFETY & SECURITY

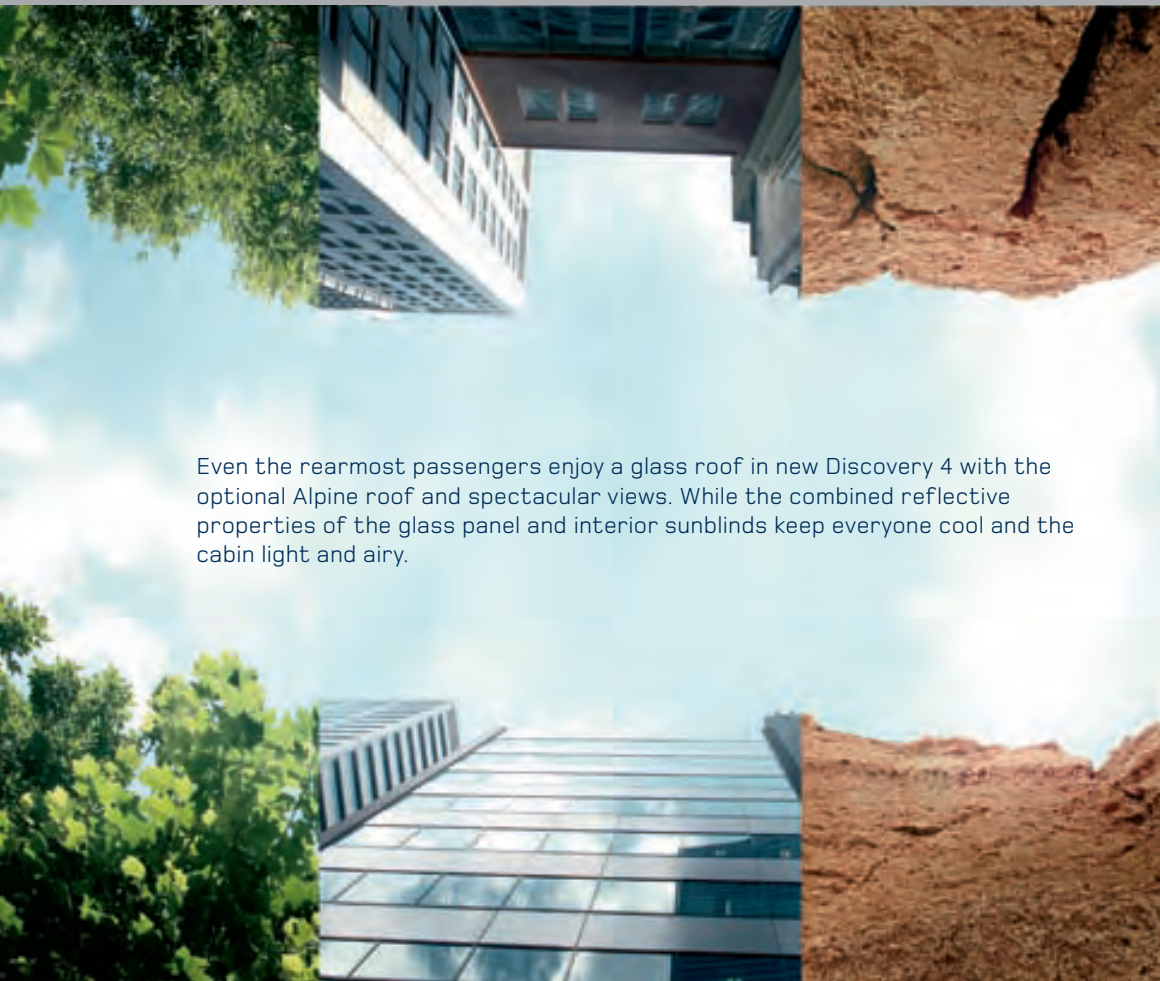
	TDV6 2.7	TDV6 3.0	5.0 V8 Petrol
Roll Stability Control (RSC)	■	■	■
Airbags, row one driver and passenger front	■	■	■
Airbags, row one driver and passenger side	■	■	■
Airbags, side and head curtain (1st, 2nd & 3rd row*)	■	■	■
Central high mounted stop lamp	■	■	■
Dynamic Stability Control (DSC)	■	■	■
Electric Parking Brake (EPB)	■	■	■
Electronic Brake Assist (EBA)	■	■	■
Four channel all terrain ABS (Anti-lock Braking System) with all round ventilated disc brakes	■	■	■

■ Standard □ Option – Not available *3rd row only with 7 seats fitted

STEERING

	Description	All Derivatives
Type		Assisted rack and pinion
Steering wheel: height adjustment standard	Turns lock to lock	3.32
Turning circle	Kerb to kerb Wall to wall	11.45m 11.8m

Even the rearmost passengers enjoy a glass roof in new Discovery 4 with the optional Alpine roof and spectacular views. While the combined reflective properties of the glass panel and interior sunblinds keep everyone cool and the cabin light and airy.



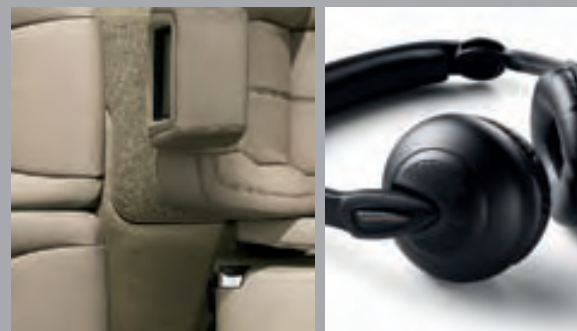


AUTOMATIC CLIMATE CONTROL. Automatic climate system with side to side independent temperature control automatic air filtration is standard on all models. An optional auxiliary rear climate control is also available.



PORTABLE AUDIO INTERFACE. An innovative and convenient way to play portable music, including MP3 player, USB, iPod through **harman/kardon®** which works through high line and premium systems. Music folders, files and tracks are displayed on the new, full-colour Infotainment Touch-screen. Please note: No Cost Option iPod Connectivity Lead is required to connect iPod to system.

iPod is a trademark of Apple Inc., registered in the U.S. and other countries.



REAR SEAT ENTERTAINMENT. Rear passengers can watch DVDs individually or play their own portable games console through the optional twin-screen entertainment system, playing the sound through individual headphones or from the optional **harman/kardon®** premium LOGIC7® system incorporating premium 'theatre-style' audio quality. Model specific availability.



INTERIOR MOOD LIGHTING. Standard on LR-TDV6 3.0 HSE and LR-V8 models, provides a premium ambience to the interior with white LED light via a down lighter mounted in the roof console, as well as at interior door handles and front door pockets.

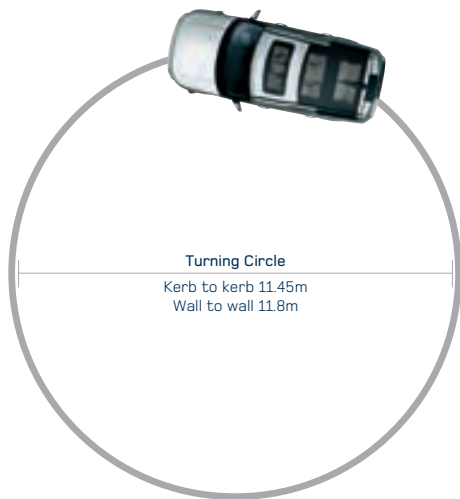


ELECTRICALLY ADJUSTABLE SEAT BOLSTERS with Premium Leather available as an option on LR-TDV6 3.0 HSE and standard on LR-V8. Provide the driver with added comfort and support. All front seats benefit from new, more supportive, cushion design.



HARD DISC DRIVE NAVIGATION (HDD). Increased access speed, new graphics and display. HDD stores more data and can be upgraded via a Land Rover Dealer download.

DIMENSIONS & CAPABILITY



Obstacle Clearance
Ground clearance up to 310mm (air suspension)
Standard ride height 185mm



Wading Depth
Maximum wading depth 700mm (air suspension only)
Normal wading depth 600mm



Off-road Geometry

	A	B	C
Approach Angle	36.2°	27.3°	29.6°
Ramp Break Over Angle			
Departure Angle			
Off-road ride height (air suspension)			



Maximum load space – seats folded

Interior

Head room – mm
1st row 1,020 (1,027 with Alpine roof)
2nd row 1,043 (1,076 with Alpine roof)
3rd row 983 (1,018 with Alpine roof)

Leg room – mm
1st row 1,078
2nd row 955
3rd row 923

Shoulder room – mm
1st row 1,503
2nd row 1,499
3rd row 1,087



Maximum load space behind row 2 – seats up

Luggage Capacity

Load space length behind: – mm
1st row 1,950 (7 seat (1,831 5 seat))
2nd row 1,124 (7 seat (1,108 5 seat))
3rd row 338 (7 seat)

Width – mm
1,235 (1,146 between wheel arches)

Height – mm
1,027 (1,058 with Alpine roof)

Load space volume behind: – litres
1st row 2,558 (7 seat (2,476 5 seat))
2nd row 1,192 (7 seat (1,260 5 seat))
3rd row 280 (7 seat)

WEIGHTS & PERFORMANCE

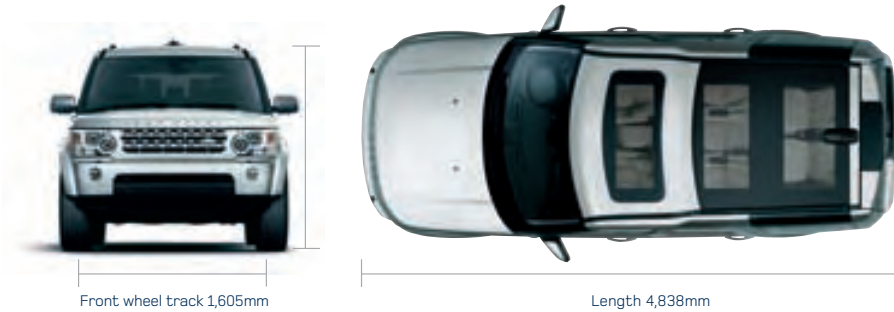


WEIGHTS kg (lbs)	TDV6 2.7 Auto	TDV6 3.0 Auto	V8 5.0 Auto
Base kerb mass* (weight from)	2,486	2,583	2,548
Gross vehicle weight	3,240 - air suspension	3,240 - air suspension	3,240 - air suspension
Maximum mass on each axle (front)	1450	1450	1450
Maximum mass on each axle (rear)	1,855 - air suspension	1855 - air suspension	1855 - air suspension
Towing			
Max towing	3,500	3,500	3,500
Unbraked trailer	750	750	750
Maximum mass of vehicle and trailer combination (GTW)	6,740 - air suspension	6,740 - air suspension	6,740 - air suspension

*EEC kerb includes fluids, tools, spare and 75kg driver

PERFORMANCE AND FUEL ECONOMY	TDV6 2.7 Auto	TDV6 3.0 Auto	V8 5.0 Auto
Maximum speed km/h	180	180	195
Acceleration - secs 0-100km/h	12.7	9.6	7.9
0-60mph	11.7	9.0	7.5
Fuel economy			
Urban L/100km	13.1	11.2	19.8
Extra urban L/100km	8.5	8.3	10.7
Combined L/100km	10.2	9.3	14.1
Combined CO ₂ emissions (g/km)	270	244	328

Fuel consumption figures: The results given here do not express or imply any guarantee of the fuel consumption of any particular vehicle with which this information may be supplied. Vehicles are not individually tested and there are inevitable differences between individual vehicles of the same model. The vehicle may also incorporate particular modifications. Furthermore, the driver's style and road traffic conditions, as well as the extent to which the vehicle has been driven and the standard of maintenance, will affect its fuel consumption.



Minimum height- mm (inch)

Roof options

Fixed roof	1,837
Alpine roof	1,832
With sunroof tilted open	1,870
Roof rails	1,841
Integrated phone antenna (Alpine roof)	1,888

Air suspension (in access lower mode)

Fixed roof	1,837
Alpine roof	1,832
With sunroof tilted open	1,870
Roof rails	1,841
Integrated phone antenna (Alpine roof)	1,888



landrover.com.au/ourplanet

Our commitment is to a sustainable future. Everything from the design of our vehicles and the way we build them, to how and where we use them and, at the end of their life, to how they can be safely disposed of, Land Rover is committed to a sustainable future. We're committed to reducing our impact on the environment and are working in four key areas.



e_TERRAIN TECHNOLOGIES.

In 2007 we announced a joint investment into new technologies to improve the environmental performance of our vehicles. This joint investment now stands at £800m. Building on the innovation of the Land_e concept, the first of these technologies is the Stop/Start engine in our diesel manual Freelander 2. In 2008 we revealed our new concept vehicle, the LRX; a Land Rover in body and spirit but conceived as a hybrid 2.0 litre diesel with potential CO₂ emissions of 120g/km.



SUSTAINABLE MANUFACTURING.

World class manufacturing facilities. Certified to ISO14001 since 1998. Our manufacturing facilities at Solihull and Halewood have reduced emissions by around 4 percent year on year, over the last 5 years. Our TDV6 and TDV8 engines are assembled in the Dagenham Diesel Centre which is powered by wind turbines. Total energy used in manufacturing each vehicle has been reduced by 19 percent since 2002. While water use per vehicle has been cut by 14 percent in the same period. We're also offsetting all CO₂ emissions by the manufacturing assembly of Land Rover vehicles at both plants. Partnered with specialist organisation Climate Care, our offset projects include a wind farm in China and hydro electric generators in Tajikistan. In addition, Land Rover vehicles are now designed to be 85 percent recyclable with all current models meeting the European End of Life Vehicles Directive. Sustainable and recyclable materials play an important role too: Freelander 2 contains 10 percent recycled and 10 percent renewable materials.



CO₂ OFFSETTING in 2006, in the UK, we launched a pioneering programme for customers, independently administered by Climate Care, to offset CO₂ emissions for the first 45,000 miles (72,000 km) driven of all new Land Rovers. This programme is being rolled out progressively to other countries; to date in Austria, Belgium, The Netherlands, France, The Middle East, Norway and Sweden. In addition, we're also the first automotive company to offset 100 percent of our manufacturing assembly CO₂ emissions.



GLOBAL CONSERVATION AND HUMANITARIAN PROJECTS.

Land Rover vehicles are used by conservation and humanitarian organisations worldwide and are often first choice for difficult tasks. Organisations include the Born Free Foundation, Biosphere Expeditions, Royal Geographical Society (with IBG), China Exploration and Research Society and Earthwatch Institute. Our projects are diverse, ranging from an initiative to help with the protection of rare wolves in Ethiopia, to a project funded by our CO₂ offset programme which provides efficient cooking stoves to rural parts of Uganda.

Our planet. We take our responsibility to our planet very seriously. Our vehicles are designed for purpose. As part of our Fragile Earth policy Land Rover has actively promoted responsible off-road driving since 1990. Our Experience Centres teach drivers to understand the full potential and unique breadth of capability of their vehicles while reducing impact on nature and the environment, in a wide range of activities.

To find out more, and to see our progress, visit www.landrover.com.au/ourplanet



www.landrover.com.au

WARRANTY A comprehensive manufacturer's warranty is a feature of every Land Rover vehicle and extends to any genuine Land Rover accessories fitted by a Land Rover Retailer. The warranty period for the vehicle is three years/100,000 kilometres. In addition, the paint surface is also covered for three years/100,000 kilometres and the body work covered for corrosion for six years.

LAND ROVER ROADSIDE ASSISTANCE All Land Rover vehicles purchased in Australia benefit from complimentary Land Rover Roadside Assistance service for the length of the new car warranty. This covers you Australia-wide 24 hours per day every day. And because it is Land Rover Assistance, help will also be provided if you become bogged or disabled on roads that only four-wheel drives can travel.

CUSTOMER CARE Land Rover Australia has a dedicated Customer Care Centre to assist owners who may have a general query. Owners seeking this level of assistance are invited to phone our Customer Care Centre on the toll-free number 1800-625-642. Land Rover ownership includes a package of benefits designed to provide high standards of after sales care and support.

LAND ROVER FINANCIAL SERVICES Just as Land Rover lets you tailor a vehicle to your specific requirements, we offer you the same service when it comes to finance. You can arrange to purchase and finance your Land Rover from the people who know it best - your Land Rover Retailer. Your Land Rover Business Manager can explain the full range of finance options available from Land Rover Financial Services and provide expert advice to help tailor a finance package to best suit your needs. To discover more about Land Rover Financial Services visit your nearest Land Rover Retailer or visit www.landroverfinancialservices.com.au or the link at www.landrover.com.au

IMPORTANT NOTICE: This brochure, produced by Land Rover Australia, offers a general guide to Discovery 4 product specifications. All details are believed to be correct as of July 2009. However, we are constantly striving for improvement and therefore reserve the right to alter specifications without notice. Accordingly this brochure should not be regarded as an infallible guide to the correct specifications, nor does it constitute an offer or sale of any particular vehicle. The colours reproduced here are subject to the limitations of the printing process and may therefore vary slightly from the actual vehicle. The company reserves the right to alter or withdraw any colour finish without notice. Distributors and retailers are not agents of Land Rover Australia and have no authority to bind Land Rover Australia to any expressed or implied undertaking or representation. Please drive responsibly off-road.



Please recycle this brochure after use

Jaguar Land Rover Australia Pty Ltd
Trading as Land Rover Australia
ABN 86 004 352 238
65 Epping Road, North Ryde NSW 2113
Locked Bag 2214, North Ryde NSW 1670
Telephone: 1800 809 308
www.landrover.com.au

©Jaguar Land Rover Australia Pty Ltd 2009
Publication Number: LRML 3039/09



3.0 TDV6 HSE



BY APPOINTMENT
TO HM THE QUEEN
MANUFACTURERS OF
LAND ROVER VEHICLES
LAND ROVER, WARWICK



BY APPOINTMENT
TO HRH THE DUKE OF EDINBURGH
MANUFACTURERS OF
LAND ROVER VEHICLES
LAND ROVER, WARWICK



BY APPOINTMENT
TO HRH THE PRINCE OF WALES
MANUFACTURERS OF
LAND ROVER VEHICLES
LAND ROVER, WARWICK



GO BEYOND