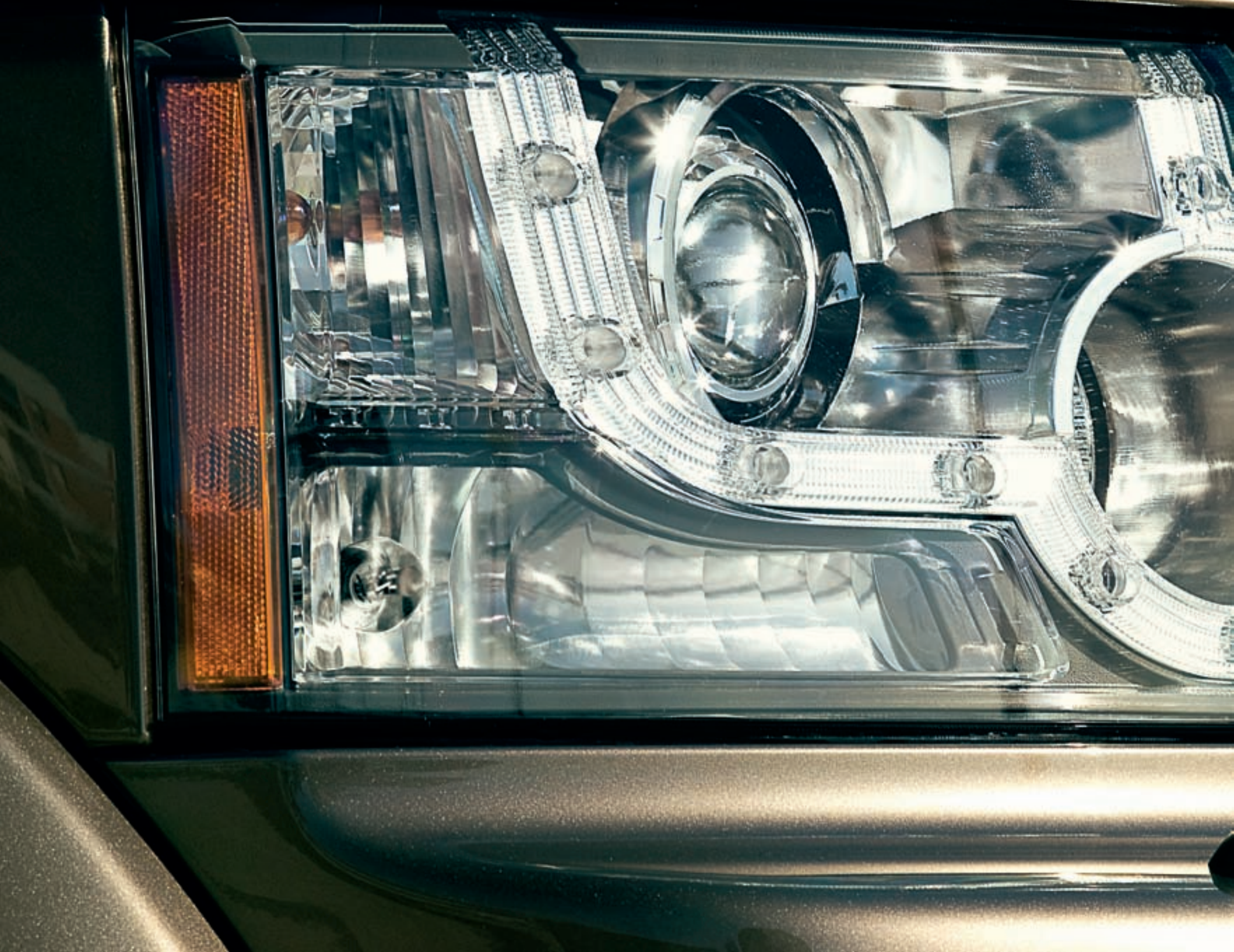


DISCOVERY 4



GO BEYOND





Introduction

Contemporary design, modern style, Discovery 4

PAGES
2-7

Tough luxury

A sophisticated interior for total refinement

PAGES
8-11

Interior

Stadium seating and versatile cabin design

PAGES
12-19

Driving technology

The latest engines, driver-focused dynamics

PAGES
20-21

Breadth of capability

All-road capability and Terrain Response®

PAGES
22-27

Peace of mind

Smart technology, useful technology

PAGES
28-33

Specification and choices

Exterior colours, interior colours and wheels

PAGES
34-39

Technical data

Engines, technical data, dimensions, capability and weights

PAGES
40-45

Accessories

Adding extra capability and practicality, even more style and making it your Discovery 4

PAGES
46-57

Our Planet

Our plan for a sustainable future

PAGES
58-59



Discovery 4. Bold, flexible and astonishingly luxurious. Instantly recognisable as a Land Rover, it features a progressive, contemporary exterior. An attitude that gives Discovery 4 a refined, modern presence on-road. And off-road.



Discovery 4 features striking headlamp styling, incorporating the unique Land Rover 'night-time' signature*, a distinct two bar lattice grille and an aerodynamically-profiled front bumper. There are two exhilarating, new exterior body colours, Baltic Blue and Fuji White, which join the distinctive Discovery 4 line-up.

*LED Signature lights are available on some derivatives. Please consult the pricing and specification sheet accompanying this brochure or contact your Land Rover Dealer for further details.





Discovery 4. With its distinctive profile it has always been original. With its key design features it is unquestionably sophisticated. There are body coloured painted door mirrors, as well as an Oberon finish for door handles. And jewel-like rear lamps, plus the option of stylish 19 inch or 20 inch lightweight alloy wheels.





A focal point of Discovery 4's interior is the centre console with its integrated, flowing design. There is a high quality In-Car Entertainment system and an optional full-colour, Infotainment Touch-screen as well as supremely comfortable, supportive seats both front and rear. Driver information is accessed intuitively and is presented in a clear, immediate format, with easy-to-use menus and graphics and comprehensive functionality.

Tough luxury. Discovery 4's sumptuous, tactile interior provides superb levels of craftsmanship and comfort. Meticulous attention to design and detail, such as on the seats, is without compromise. Materials are truly premium, creating a superior ambience of quality. Fine touches, such as double stitching on the facia, are unambiguous expressions of the vehicle's prestige.







The Terrain Response® control is easy to reach in its prominent position at the base of the centre console. There are also those small, practical details that make life with Discovery 4 so convenient: stowage space around the centre console is extra generous; useful door pockets are ready-to-hand with HSE models benefiting from their own dedicated lighting.

The interior is exclusive and rewarding to touch with its innovative design maximising all available space. While the truly flexible seating layout offers multiple configurations and up to seven full-size adult seats.





harman/kardon





The view's amazing up here. And it's as good for the passengers as it is for the driver. The interior of Discovery 4 offers both supreme luxury and class-leading flexibility by offering stadium seating and second and third rows of seats that can be folded independently of each other.



Monday: Airport



Tuesday: School bus



Wednesday: Band practice



Thursday: Garden centre



Friday: Night out at the theatre



It's the weekend...

Proper grown-up seating. As many as seven adults can travel in complete comfort and enjoy a full-sized, forward facing seat, generous legroom and wide-opening doors for easy access. The flexible, versatile seating layout offers multiple configurations to suit almost every conceivable use.

Make light work of difficult loads with Discovery 4's two-piece, asymmetric tailgate design. Both upper and lower tailgates are made from resilient lightweight aluminium. In fact, the lower tailgate is so strong that, when the vehicle is parked, it can support the weight of two adults and be used as a viewing platform. Alternatively, the lower section can be used as a seat with the upper section providing a canopy. When fully open, the tailgate gives impressive access to the rear of the vehicle and comes into its own when loading large, bulky or heavy objects. The asymmetric portion of the lower tailgate offers a reduced reach-in distance when open and a lower load height when closed.





Making the passenger experience sublime. Thanks to Discovery 4's bold, innovative design and upright side profile, head and shoulder room are amongst the best in class. Stadium seating ensures that all occupants share clear views of the surrounding landscape. A priority is given to refinement, including the reduction of noise intrusion and the inclusion of high-quality materials.

Discovery 4 features the legendary Land Rover command driving position, which gives better visibility over the traffic ahead for spotting hazards and helps parking and off-road driving. The command driving position brings a sense of control and reduces stress and fatigue as all key controls are close to hand and information is easy to read.





Making the driving experience effortless. The full-colour Infotainment Touch-screen, standard on HSE and V8 derivatives, is located at the top of the centre console. This provides all audio and navigation controls and is easy to use and gives intuitive access. It reduces the number of conventional controls required on the console and frees up space for an eye-catching analogue clock, which adds to the premium ambience of the interior. A choice of In-Car Entertainment options are available including **harman/kardon**[®], premium LOGIC7[®] system incorporating premium 'theatre-style' audio quality.

The centrepiece of driver information is the instrument panel with its 5 inch Thin Film Transistor (TFT) display, showing vehicle information. Importantly, the display can be personalised using a simple menu system controlled by the thumb controls on the steering wheel. Switches for other functions, including cruise control, remote audio and phone, are conveniently located below the thumb controls.

harman/kardon[®] and LOGIC7[®] are registered trademarks of Harman International Industries, Incorporated.



Superb levels of power, economy and refinement for Discovery 4.

The 180kW LR-SDV6 3.0 Advanced Sequential Turbo Diesel engine uses the latest materials and sequential turbochargers to optimise responsiveness by delivering increased torque at very low revs. This is one of the most technically advanced diesel engines in the world and uses unique, parallel sequential turbochargers for the first time in a V-engine.

The high-technology 2.7 litre Diesel provides smooth torque distribution, flexibility, refinement and economy thanks to the latest common rail technology and innovative materials.

The LR-V8 Petrol engine provides outstanding power, torque and refinement and harnesses the latest technology to deliver outstanding drivability and performance. With a torque activated dual independent, variable camshaft phasing system, it offers an immediate driver-focused reaction to throttle inputs and driving circumstances.



THE LR-SDV6 3.0 ADVANCED SEQUENTIAL TURBO DIESEL ENGINE uses a sequential mode boosting system to increase the air density entering the engine's cylinders, enabling a correspondingly greater amount of fuel to be injected for increased power output and economy. This is a two turbocharger, two-stage system, which makes the engine more responsive as well as delivering class-leading torque and power. The primary stage, variable nozzle turbine operates over the entire rev range. Unlike in most single boost systems, the primary stage provides maximum performance up to 2,500rpm. Above 2,500rpm the secondary stage, fixed geometry turbine switches into operation splitting the gas flow between the two turbochargers.

THE LR-V8 PETROL ENGINE'S camshaft torque actuated, dual independent Variable Camshaft Timing system continuously controls camshaft timing to deliver an optimum balance of power, efficiency and emissions. The chain driven camshaft timing units are mounted on the end of each camshaft to advance or retard camshaft timing and alter the camshaft to crankshaft phasing. Camshaft Profile Switching features two completely different intake camshaft profiles machined into the same camshaft. The engine management system chooses the camshaft profile depending on running conditions and torque demands: one profile for low-speed/low-load driving; the other, with longer valve lift, for higher-speed/higher-loads.

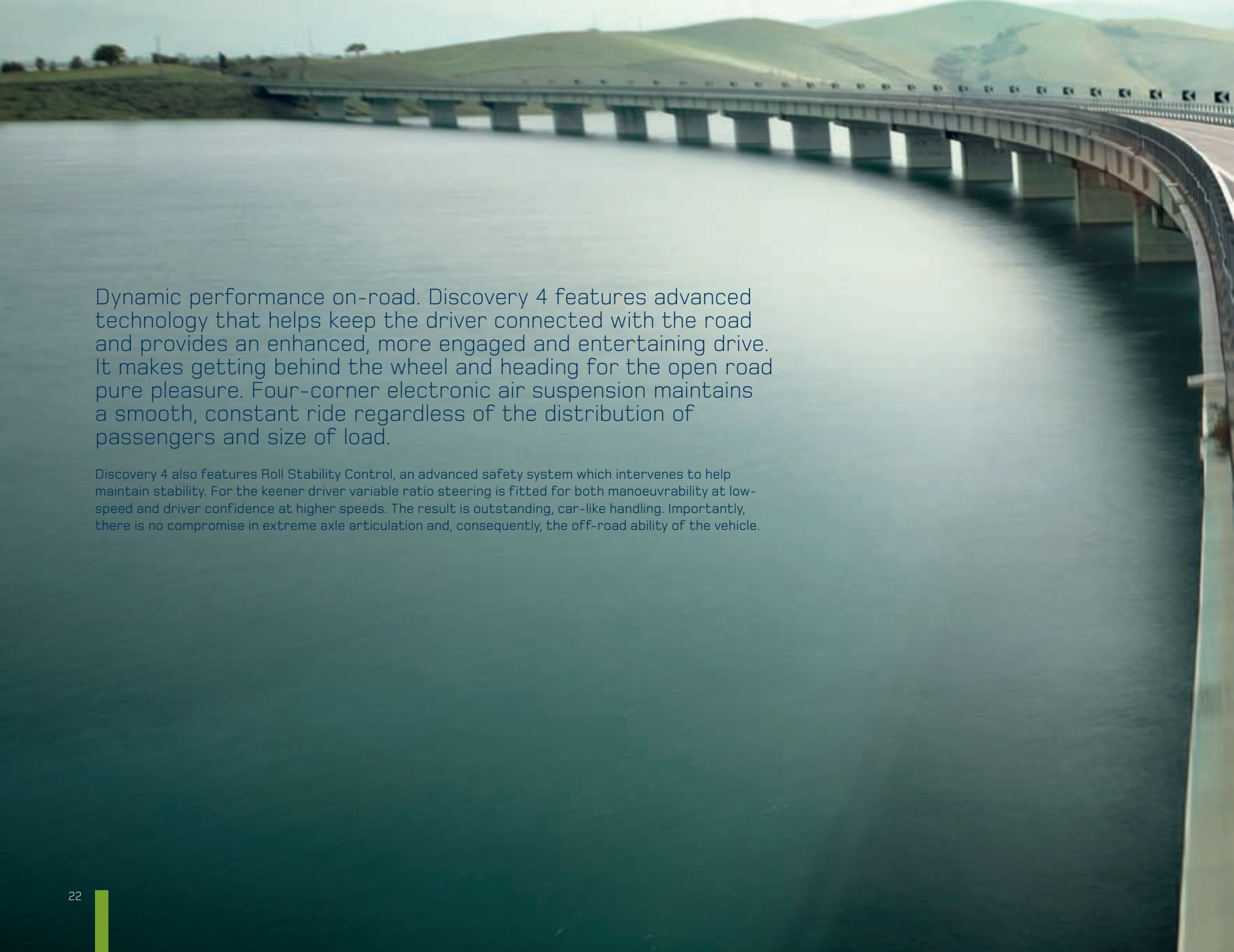
LR-SDV6 engine upgrades benefit from the latest investment in e_TERRAIN TECHNOLOGIES, specifically to reduce CO₂ emissions and improve fuel consumption. An Intelligent Power Management System includes Smart Regenerative Charging so the battery is charged when it is most economical to do so. Idle speeds are reduced and a 'metering mode' added to the diesel fuel injection system, delivering fuel at the exact rate needed - no more; no less.



THE FUEL INJECTION SYSTEMS ON BOTH PETROL AND DIESEL ENGINES achieve high standards of durability, combustion performance and refinement. The ultra-precise machining of high-pressure injectors ensures a fine-quality spray of fuel into the combustion chambers and optimises combustion conditions both at cruising speed and during acceleration. Both engines use a high-pressure, steel fuel rail. Fuel in the rail is detected by a high-pressure sensor which controls flow into the rail by adjusting an electromagnetic valve in the high-pressure fuel pumps' outlet. Fuel injection system shown here is on the Petrol engine. Shared technology is also available on the Diesel engine.



INCREASED SERVICE INTERVALS AND REDUCED COST OF OWNERSHIP are the result of the very latest design, engineering and manufacturing techniques, as well as the use of technologically advanced materials and components. Petrol and diesel engines offer optimum performance and refinement combined with significant reductions in Noise, Vibration and Harshness (NVH). All engines have been developed to cope with the specific requirements of a Land Rover product: strength and durability when operating in dusty environments, on steep inclines and wading through rivers.



Dynamic performance on-road. Discovery 4 features advanced technology that helps keep the driver connected with the road and provides an enhanced, more engaged and entertaining drive. It makes getting behind the wheel and heading for the open road pure pleasure. Four-corner electronic air suspension maintains a smooth, constant ride regardless of the distribution of passengers and size of load.

Discovery 4 also features Roll Stability Control, an advanced safety system which intervenes to help maintain stability. For the keener driver variable ratio steering is fitted for both manoeuvrability at low-speed and driver confidence at higher speeds. The result is outstanding, car-like handling. Importantly, there is no compromise in extreme axle articulation and, consequently, the off-road ability of the vehicle.

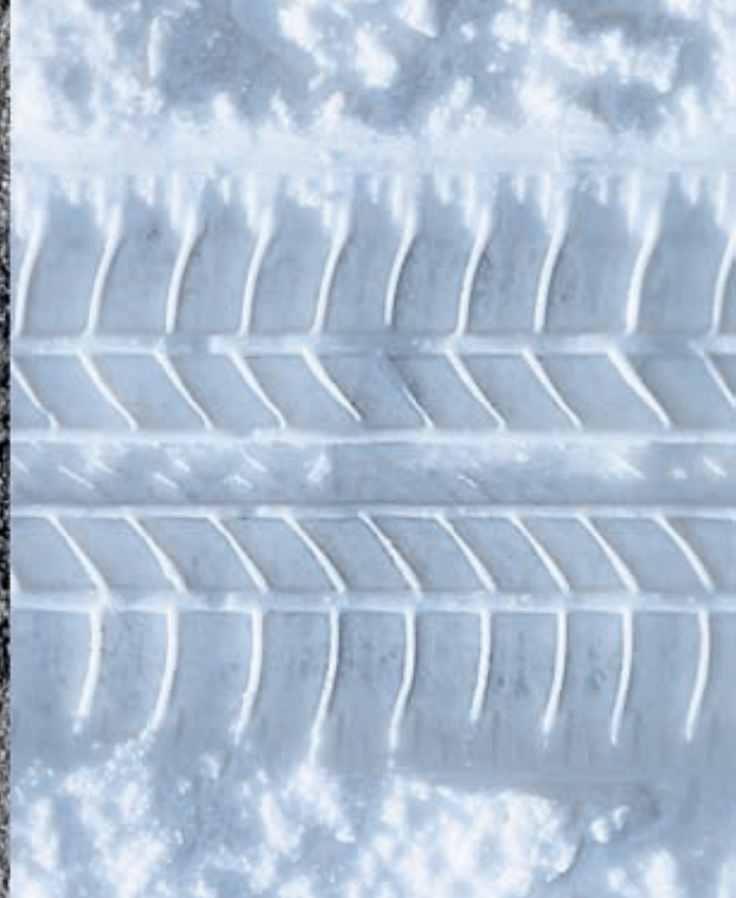
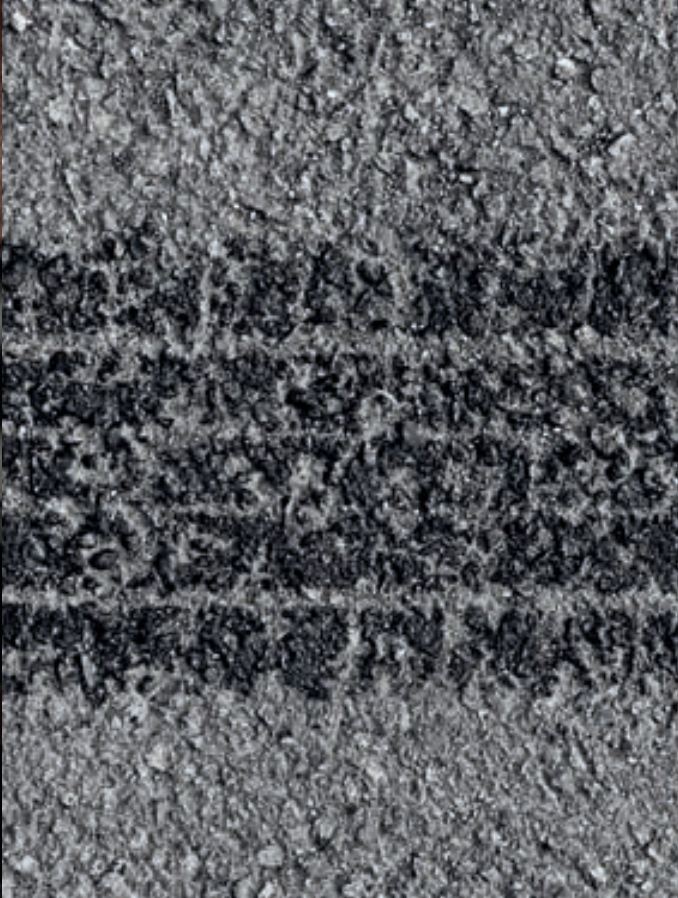




Short front and rear overhangs. Exceptional ground clearance. The power and torque from the LR-SDV6 3.0 Advanced Sequential Turbo Diesel engine. They all make major contributions to Discovery 4's superior off-road capability. And help enable maximum manoeuvrability over some of the most difficult terrains. Long-travel, all-independent suspension allows extreme wheel articulation. Ruts and rocks, for example, are conquered with ease.

Standard four-corner cross-linked air suspension provides class-leading car-like ride and handling, as well as a constant, level ride height, irrespective of the number of passengers or load distribution. Ride height can also be raised by up to 125mm to clear tricky obstacles, or lowered by 50mm for easy access and loading.





Whatever the surface, Discovery 4 takes it on with confidence. The Terrain Response® dial, standard on all derivatives works in conjunction with air suspension and gives access to over 60 years of Land Rover 4x4 expertise and state-of-the-art dynamic technology. Enhanced with Land Rover's latest e_TERRAIN TECHNOLOGIES, specifically to reduce CO₂ emissions, Discovery 4's Intelligent Power Management System fitted to SDV6, shared with the Range Rover Vogue and Range Rover Sport, complements all terrain performance with energy saving technology.



Cruising on tarmac, driving over grass, gravel or snow, taking on mud and ruts, crossing sand and crawling over rocks: Terrain Response® is your own off-road driving expert and allows you to take on almost any surface with confidence. Simply turn the conveniently positioned dial and Discovery 4's engine, transmission, suspension, throttle and traction settings reconfigure for optimum driveability in all conditions. Land Rover's helpful technology takes yet another step forward with Gradient Acceleration Control which enhances the standard Hill Descent Control. Gradient Acceleration Control helps reduce, and smooth out the effects of, the sudden initial acceleration that can occur when the vehicle enters a steep gradient.



AUTOMATIC HEADLAMPS WITH HIGH BEAM ASSIST* detect vehicle headlamps/tail lights and dip the high beam until the light source is out of range. The system is able to distinguish between automotive and non-automotive light sources.



ADAPTIVE FRONT LIGHTING*. For more relaxed night-time driving, Adaptive Lighting varies the light cast ahead of the vehicle so that the beams follow the curve of the road.



DYNAMICS AND BRAKES. Driver-focused on-road dynamics. The result is outstanding, car-like handling that does not compromise extreme axle articulation and, consequently, the off-road ability of the vehicle.



STEERING WHEEL CONTROLS. Steering wheel with ergonomically designed switch layout for driver information and remote audio controls, cruise control and telephone are standard on all models. Heated steering wheel controls are optional dependant on the vehicle derivative.



THE AWARD WINNING TERRAIN RESPONSE® SYSTEM optimises the vehicle set-up for virtually all on-road or off-road driving situations, with five different settings to suit different terrains such as grass/gravel/snow, sand, mud and ruts and rock crawl.

GRADIENT RELEASE CONTROL. Patented Land Rover system works with Hill Descent Control, across terrains such as rock, gravel and sand, for more controlled, confident descents. Works in reverse and first gear.



AIR SUSPENSION. Four-corner independent Air Suspension with variable ride height and electronic cross-linking for a constant level ride height irrespective of load distribution. Ride height can be raised up to 125mm to clear obstacles or lowered by 50mm for easy access and loading.



TRAILER STABILITY ASSIST. System helps make towing safer by detecting trailer oscillations and employing selective braking to help correct potentially dangerous situations.

TOW ASSIST*. This innovative functionality has the capability to predict the direction of a trailer when reversing. An on-screen information prompt appears and confirms when a trailer is attached and guides the driver. An additional feature due to the mounting location of the rear view camera is Tow Hitch Assist* that helps the driver to precisely couple the tow bar with a Tow Hitch.



ELECTRIC PARKING BRAKE (EPB). A switch next to the gear selector to electrically apply and release the parking brakes on the rear wheels. A simple pull of the lever applies the brake manually and a press releases it. The parking brake will also release automatically upon drive away.



PUSH BUTTON START. Once the vehicle has been accessed using the remote transmitter, the device may be stored in a pocket or bag to allow starting without remote transmitter or key being docked. The optional Keyless Entry system provides even greater convenience. When within close proximity of the vehicle along with the remote Smart key, simply open the door, get in and push the Start button.



PARKING AID – REAR VIEW CAMERA*. (Optional) Camera provides rearward view from the new, full-colour Infotainment Touch-screen. Works in conjunction with rear parking aid. Surround Camera System (Optional) comprises five digital cameras to provide near 360 degree view surrounding vehicle to aid low-speed manoeuvring via new, full-colour Infotainment Touch-screen. Can be customised to provide a single camera view or multiple images. Functions include: Parking Aid – Rear View Camera, All Round Vision, Junction View. Also includes Tow Assist and Tow Hitch Assist.



INSTRUMENT PANEL with 5 inch (12.7cm) TFT display for trip information, primary vehicle information and warnings.



FULL-COLOUR INFOTAINMENT TOUCH-SCREEN*. Incorporates full control and functionality over integrated systems such as navigation, audio, entertainment systems, camera systems, 4x4 information and vehicle settings.



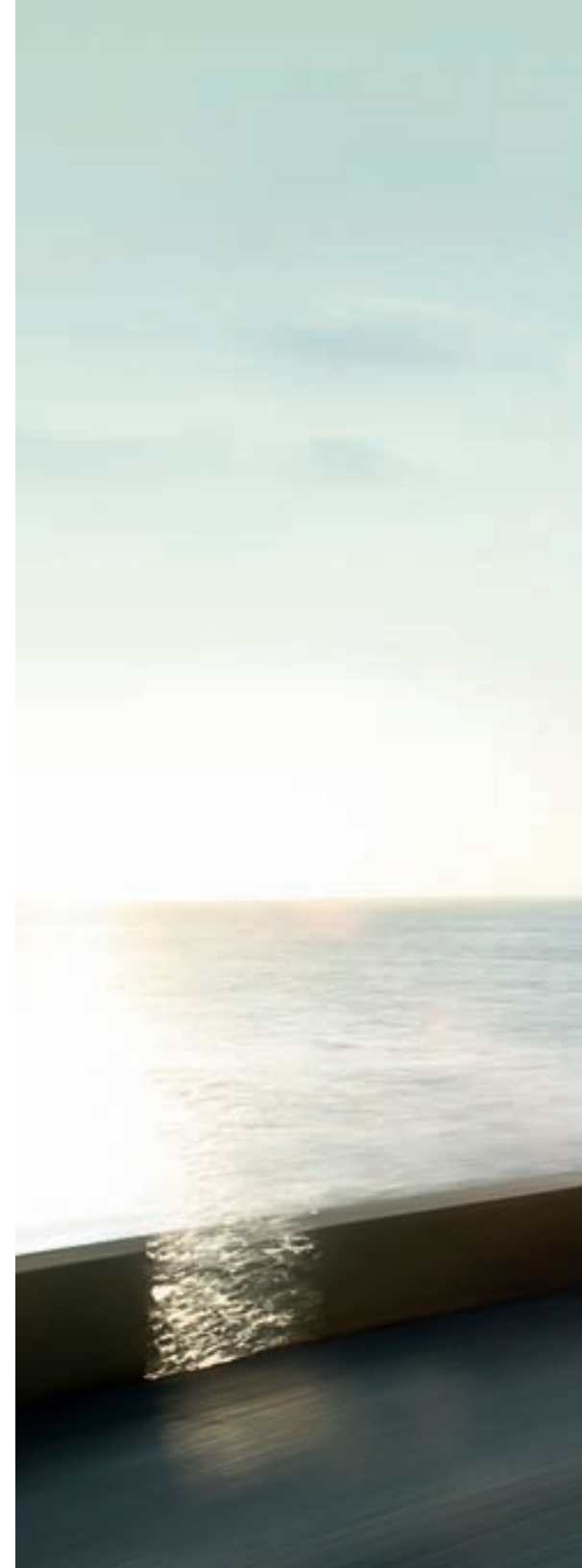


Key to Discovery 4's strength, safety and outstanding on-road and off-road dynamics is the Integrated Body-frame™. A Land Rover patented technology, it delivers more than the comfort, refinement and on-road attributes of a monocoque design. It sets new standards for off-road performance too. Other features include Anti-lock Braking System (ABS), Emergency Brake Assist (EBA) which supplies extra brake pressure in an emergency, and Electronic Traction Control (ETC) which helps maintain optimum grip. There is also the option of Tyre Pressure Monitoring System (TPMS), designed to warn you of low tyre pressure. Dynamic Stability Control (DSC) and Roll Stability Control (RSC) work with the braking system and are designed to correct cornering over or understeer and to help maintain stability at all times. Up to eight airbags are fitted: the front seats have both front and side airbags with each seat row having its own curtain airbags. For a better view ahead on bends and a more effortless night-time drive, Discovery 4's optional Adaptive Front Lighting varies the headlamp light cast, ensuring the beams follow the curve of the road. Optional Automatic High Beam Assist detects oncoming or followed vehicles to switch between high and dipped beam.



Tow Assist is a next-generation reversing aid that predicts the rearward trajectory of both vehicle and trailer. This helps the driver perform more accurate manoeuvres and is selected from the Touch-screen menu. Wide-view cameras on the vehicle give a clear field of vision; guidelines are superimposed over the resulting image to highlight the suggested reversing path for vehicle and trailer.

Other towing aids are Tow Hitch Assist and Trailer Stability Assist. The latter detects potentially dangerous trailer oscillations by monitoring vehicle behaviour such as a slight swing in response to trailer movements. It can initiate engine torque reduction and intervenes using the brakes to bring vehicle and trailer back under control. Tow Hitch Assist helps hitching a trailer to the tow ball.





EXTERIOR COLOURS



BALI BLUE - METALLIC



BALTIC BLUE - METALLIC



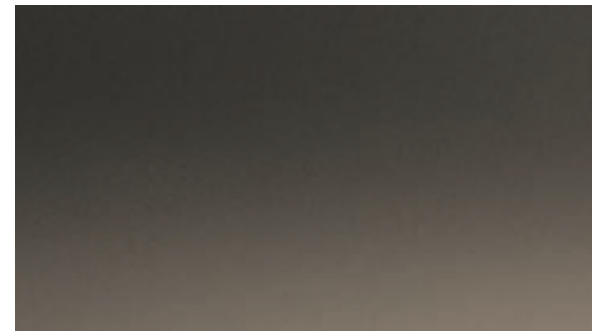
BOURNVILLE - METALLIC



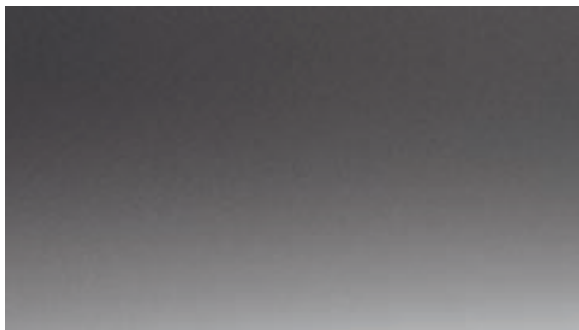
IZMIR BLUE - METALLIC*



MARMARIS TEAL - METALLIC



NARA BRONZE - METALLIC



STORNOWAY GREY - METALLIC



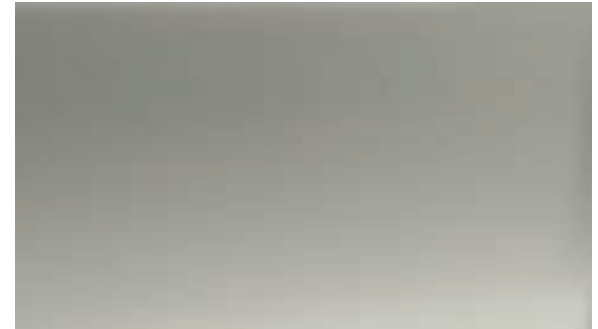
ZERMATT SILVER - METALLIC



FUJI WHITE - SOLID



GALWAY GREEN - METALLIC



IPANEMA SAND - METALLIC



RIMINI RED - METALLIC



SANTORINI BLACK - METALLIC

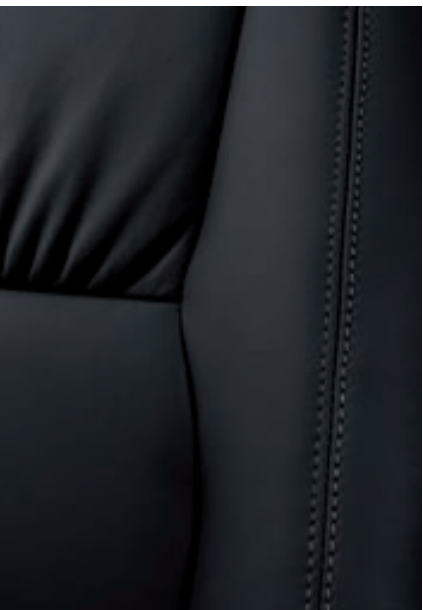


SIBERIAN SILVER - METALLIC*

Thirteen eye-catching exterior colours including new Baltic Blue and Fuji White. Choose from finishes featuring shimmering chrome particles, deep rich metallics, or bold solid colour.

*Siberian Silver replaces Izmir Blue from January 2011 production.

TO VIEW YOUR DISCOVERY 4 IN A CHOICE OF EXTERIOR COLOURS AND INTERIOR FINISHES GO TO WWW.LANDROVER.COM.AU

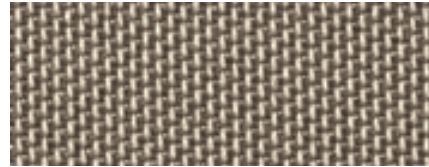


EBONY PREMIUM LEATHER ruffled-style seat.

INTERIOR CHOICES



ALMOND LEATHER



ALMOND CLOTH



EBONY LEATHER



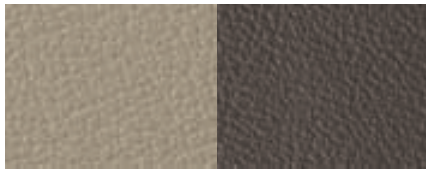
EBONY CLOTH



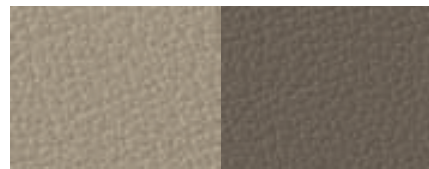
ALMOND PREMIUM LEATHER†



EBONY PREMIUM LEATHER†



ALMOND/ARABICA

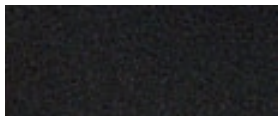


ALMOND/NUTMEG

†Electrically Adjustable Seat Bolsters standard.
Almond interior is complemented by Arabica to the top of the facia and Nutmeg carpets.

INTERIOR FINISH

Choice of interior finishes applied to the centre of the facia and upper door casings.



METEOR METALLIC FINISH



STRAIGHT GRAIN WALNUT



GRAND BLACK LACQUER

Opting for Leather or Premium Leather brings an extra feeling of prestige to the interior of Discover 4. Two interiors bring their own special personality: they are Almond leather, complemented with a choice of Nutmeg (mid-tone) or Arabica (brown tone), and Ebony leather. The interior can be further enhanced with two veneer finishes, Grand Black Lacquer and Straight Grain Walnut, which are applied to centre console and door panels (standard on HSE models). Cloth seats are also available. To help your exterior choice co-ordinate with Discovery 4's interior trims, we recommend a number of combinations.

Leather is Bovine sourced.

COLOURWAY	EBONY	ALMOND/ARABICA	ALMOND/NUTMEG
SEAT COLOUR	Ebony	Almond	Almond
CARPET	Ebony	Nutmeg	Nutmeg
FACIA TOP	Ebony	Arabica	Nutmeg
DOOR UPPER TRIM	Ebony	Almond*	Almond
DOOR INSERTS	Ebony	Almond	Almond

*For Leather and Premium Leather seats the Door Upper trim will be Arabica.

EXTERIOR COLOURS

Bali Blue	R	–	–
Baltic Blue	R	–	□
Bournville	R	R	R
Fuji White	R	□	□
Galway Green	□	R	R
Ipanema Sand	R	R	R
Izmir Blue**	R	–	□
Marmaris Teal	R	□	R
Nara Bronze	□	R	R
Rimini Red	R	□	R
Santorini Black	R	□	□
Siberian Silver**	R	–	□
Stornoway Grey	R	□	□
Zermatt Silver	R	R	□

**Siberian Silver replaces Izmir Blue from January 2011 production.

R Recommended □ Combination is available – Combination is not available





A set of gleaming alloy wheels. Nothing highlights the character of a vehicle quite as effectively. An individual design is featured for each new Discovery 4 model derivative, with an optional second style choice also available for those who like to add a touch of personalisation.



18 INCH 5-SPOKE ALLOY WHEELS
Tyre Specification: 255/60AT



19 INCH 7-SPOKE ALLOY WHEELS
Tyre Specification: 255/55AT



19 INCH 7-SPLIT SPOKE ALLOY WHEELS
Tyre Specification: 255/55AT



20 INCH 10-SPLIT SPOKE ALLOY WHEELS
Tyre Specification: 255/50AT

WHEELS & TYRES

	TDV6 2.7	SDV6 3.0 SE	SDV6 3.0 HSE	V8 5.0
18 inch 5-Spoke Alloy Wheels - 255/60AT	■	-	-	-
19 inch 7-Spoke Alloy Wheels - 255/55AT	□	■	-	-
19 inch 7-Split Spoke Alloy Wheels - 255/55AT	-	-	■	-
20 inch 10-Split Spoke Alloy Wheels - 255/50AT	□	□	□	■
Full size Alloy Wheel Spare	■	■	■	■

■ Standard □ Option - Not available

Please note: When choosing vehicles fitted with specific wheel and tyre combinations or optional wheels and tyres, your intended use of the vehicle should be considered. Wheels with larger diameters and lower profile tyres may offer certain styling or driving benefits, but may be more vulnerable to damage. Please discuss your requirements with a Dealer when selecting your vehicle and specification.

TECHNICAL

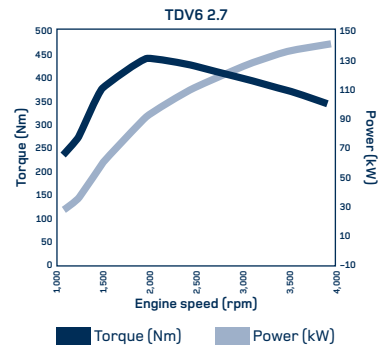
ENGINE, TRANSMISSION & SUSPENSION

	TDV6 2.7	SDV6 3.0 SE	SDV6 3.0 HSE	V8 5.0
Six-speed adaptive automatic transmission	■	■	■	■
Four-corner air suspension with Terrain Response®	■	■	■	■
Active rear locking differential	□	□	□	■

■ Standard □ Option

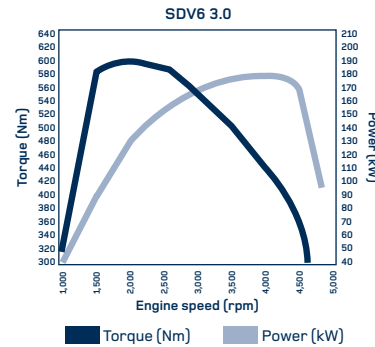
TRANSMISSION

	TDV6 2.7 Auto	SDV6 3.0 Auto	V8 5.0 Auto
Transmission type	ZF HP26	ZF HP28	ZF HP28
Gear Ratios (High range)			
6th	0.69	0.69	0.69
5th	0.867	0.867	0.867
4th	1.14	1.14	1.14
3rd	1.52	1.52	1.52
2nd	2.34	2.34	2.34
1st	4.17	4.17	4.17
Reverse	3.4	3.4	3.4
Final drive ratio	3.54	3.54	3.54
Transfer box ratio			
High	1:1	1:1	1:1
Low	2.93:1	2.93:1	2.93:1



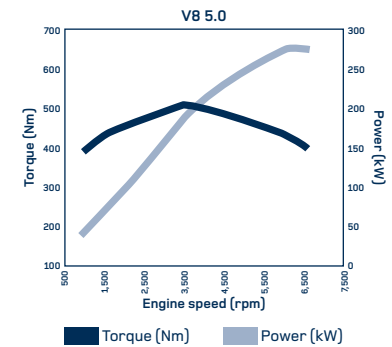
Max torque (Nm)
440Nm/1,900rpm

Max Power (kW)
140kW/4,000rpm



Max torque (Nm)
600Nm/2,000rpm

Max power (kW)
180kW/4,000rpm



Max torque (Nm)
510Nm/3,500rpm

Max Power (kW)
276kW/6,500rpm

MAX SPEED IN GEARS

(High Range) km/h (mph) - Autos in 'D', with no CommandShift® or Sport selected

	TDV6 2.7 Auto	SDV6 3.0 Auto	5.0 V8 Auto
1st	36	30	53
2nd	67	63	107
3rd	105	101	167
4th	149	136	195
5th	180	180	195
6th	180	180	195

(Low Range) - Autos in 'D', with no CommandShift® or Sport selected

	TDV6 2.7	SDV6 3.0	5.0 V8
1st	12	10	18
2nd	22	22	36
3rd	35	34	57
4th	50	46	75
5th	64	62	94
6th	93	88	130

Cd (drag co-efficient) 0.41 (0.40 on 235/70R17)

BRAKES

Description	TDV6 2.7	SDV6 3.0	5.0 V8 Petrol
Front size mm	317	360	360
Type	Ventilated disc	Ventilated disc	Ventilated disc
Rear size mm	325	350	350
Type	Ventilated disc	Ventilated disc	Ventilated disc
Parking	Duo Servo	Duo Servo	Duo Servo

SAFETY & SECURITY

	TDV6 2.7	SDV6 3.0	5.0 V8
Roll Stability Control (RSC)	■	■	■
Airbags, row one driver and passenger front	■	■	■
Airbags, row one driver and passenger side	■	■	■
Airbags, side and head curtain (1st, 2nd & 3rd row*)	■	■	■
Central high mounted stop lamp	■	■	■
Dynamic Stability Control (DSC)	■	■	■
Electric Parking Brake (EPB)	■	■	■
Electronic Brake Assist (EBA)	■	■	■
Four channel all terrain ABS (Anti-lock Braking System) with all round ventilated disc brakes	■	■	■

■ Standard □ Option – Not available *3rd row only with 7 seats fitted

STEERING

	Description	All Derivatives
Type		Assisted rack and pinion
Steering wheel: height adjustment standard	Turns lock to lock	3.32
Turning circle	Kerb to kerb Wall to wall	11.45m 11.8m

Spectacular views. Even the rearmost passengers enjoy a glass roof in Discovery 4 with the optional Alpine roof. While the combined reflective properties of the glass panel and interior sunblinds keep everyone cool and the cabin light and airy.





PORTABLE AUDIO INTERFACE*. An innovative and convenient way to play portable music, including MP3 player, USB and iPod through **harman/kardon**® high line and premium systems. Music folders, files and tracks are displayed on the full-colour Infotainment Touch-screen. **Please note:** An optional iPod Connectivity Lead is required to connect iPod to system.

iPod is a trademark of Apple Inc., registered in the U.S. and other countries.



REAR SEAT ENTERTAINMENT*. Rear passengers can watch DVDs individually or play their own portable games console through the optional twin-screen entertainment system, playing the sound through individual headphones.



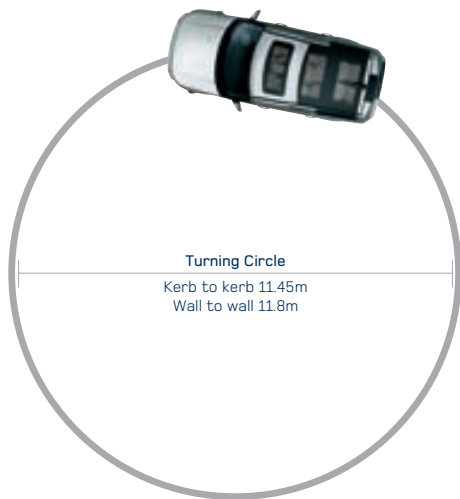
ELECTRICALLY ADJUSTABLE SEAT BOLSTERS with Premium Leather on HSE and V8. Provide the driver with added comfort and support. All front seats benefit from new, more supportive, cushion design.



HARD DISC DRIVE NAVIGATION (HDD)*. Increased access speed, new graphics and display. HDD stores more data and can be upgraded via a Land Rover Dealer download.

*Optional equipment consult the pricing and specification sheet accompanying this brochure or contact your Land Rover Dealer for further details.

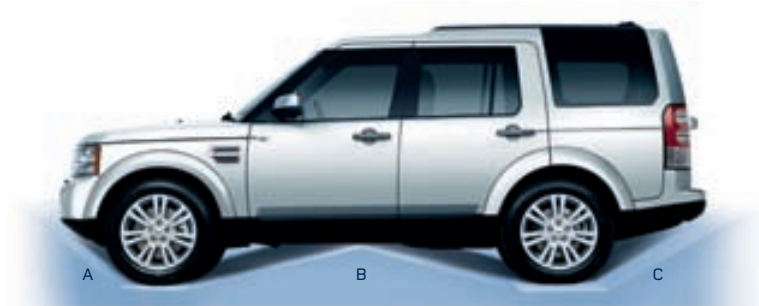
DIMENSIONS & CAPABILITY



Obstacle Clearance
Ground clearance up to 310mm (air suspension)
Standard ride height 185mm



Wading Depth
Maximum wading depth 700mm (air suspension only)
Normal wading depth 600mm



Off-road Geometry

	A	B	C
Approach Angle	36.2°	27.3°	29.6°
Ramp Break Over Angle			
Departure Angle			
Off-road ride height (air suspension)			



Maximum loadspace – seats folded

Interior

Head room – mm
1st row 1,020 (1,027 with Alpine roof)
2nd row 1,043 (1,076 with Alpine roof)
3rd row 983 (1,018 with Alpine roof)

Leg room – mm
1st row 1,078
2nd row 955
3rd row 923

Shoulder room – mm
1st row 1,503
2nd row 1,499
3rd row 1,087



Maximum loadspace behind row 2 – seats up

Luggage Capacity

Loadspace length behind: – mm
1st row 1,950 7 seat (1,831 5 seat)
2nd row 1,124 7 seat (1,108 5 seat)
3rd row 338 7 seat

Width – mm
1,235 (1,146 between wheel arches)

Height – mm
1,027 (1,058 with Alpine roof)

Loadspace volume behind: – litres
1st row 2,558 7 seat (2,476 5 seat)
2nd row 1,192 7 seat (1,260 5 seat)
3rd row 280 7 seat

WEIGHTS & PERFORMANCE

Width 2,022mm mirrors folded
2,176mm mirrors out



Rear wheel track 1,612.5mm



Wheelbase 2,885mm



Front wheel track 1,605mm



Length 4,829mm

Minimum height- mm

Roof options

Fixed roof
Alpine roof
With sunroof tilted open
Roof rails
Integrated antenna (Alpine roof)

Coil suspension Air suspension (in access lower mode)

1,887
1,882
1,920
1,891
1,938

1,837
1,832
1,870
1,841
1,888

WEIGHTS kg (lbs)

	TDV6 2.7 Auto	SDV6 3.0 Auto	V8 5.0 Auto
Base kerb mass*	2,486	2,583	2,548
Gross vehicle weight	3,240 - air suspension	3,240 - air suspension	3,240 - air suspension
Maximum mass on each axle (front)	1,450	1,450	1,450
Maximum mass on each axle (rear)	1,855 air suspension	1,855 - air suspension	1,855 - air suspension
Towing			
Max towing (towing pack optional)	3,500	3,500	3,500
Unbraked trailer	750	750	750
Maximum mass of vehicle and trailer combination (GTW)	6,740 - air suspension	6,740 - air suspension	6,740 - air suspension

*EEC kerb includes fluids, tools, spare and 75kg driver

PERFORMANCE & FUEL ECONOMY

	TDV6 2.7 Auto	SDV6 3.0 Auto	V8 5.0 Auto
Maximum speed km/h	180	180	195
Acceleration - secs 0-100km/h	12.7	9.6	7.9
Fuel economy			
Urban L/100km (mpg)	13.1	11.2	19.8
Extra urban L/100km (mpg)	8.5	8.3	10.7
Combined L/100km (mpg)	10.2	9.3	14.1
Combined CO ₂ emissions (g/km)	270	244	328

Fuel consumption figures: The results given here do not express or imply any guarantee of the fuel consumption of any particular vehicle with which this information may be supplied. Vehicles are not individually tested and there are inevitable differences between individual vehicles of the same model. The vehicle may also incorporate particular modifications. Furthermore, the driver's style and road traffic conditions, as well as the extent to which the vehicle has been driven and the standard of maintenance, will affect its fuel consumption.

ACCESSORIES

Discovery 4 is so capable and adaptable it can get straight to work across a huge variety of vastly differing terrain, conditions and roles. Even so, some owners want to add their own stamp of individuality by tailoring their Discovery 4 to their specific needs with a range of stylish, practical accessories. Accessories that are tough, versatile and bring an opportunity for personalisation to Discovery 4. Importantly, these accessories can be added at any stage during the vehicle's life - not just when it's new.

Vehicle shown right is accessorised with Side Protection Tubes - Stainless Steel, Body Side Mouldings with Bright Insert, Short Roof Rail Kit - Bright Finish and 20 inch 5-Spoke alloy wheels - Diamond Turned Finish.





EXTERIOR STYLING – ACCESSORIES



20 inch 8.5J 5-Spoke Alloy Wheel – Diamond Turned Finish
VPLAW0002*
Rim only 2009 Model Year vehicles onwards.
Recommended Tyre: Pirelli Scorpion Zero 255/50 ZR20 109Y

Centre Cap – Bright Polished Finish
RRJ500060MUZ



20 inch 8.5J 10-Spoke Alloy Wheel – Titan Silver Finish
VPLAW0003*
Rim only 2009 Model Year vehicles onwards.
Recommended Tyre: Pirelli Scorpion Zero 255/50 ZR20

Centre Cap – High Gloss Finish
RRJ500030MCM



Snow Traction System
LR005737
Applicable to 255/60 R18, 255/55 R19, 255/50 R20 wheel and tyre sizes. Fit to front wheels only.



Front Mudflaps
CAS500010PCL



Rear Mudflaps
VPLAP0017 2009 Model Year vehicles onwards.

***Please Note:** Must be ordered as a set of five 20 inch wheels per vehicle and each 2009 Model Year vehicle only must have a tyre information label fitted, (VPLAW0004). When choosing vehicles fitted with specific wheel and tyre combinations or optional wheels and tyres, your intended use of the vehicle should be considered. Wheels with larger diameters and lower profile tyres may offer certain styling or driving benefits, but may be more vulnerable to damage, please discuss your requirements with your Land Rover Dealer when selecting your vehicle and specification.

The alloy wheels shown on page 39 may also be available as an Accessory fitment, please see your Land Rover Dealer for further details.



Front Lamp Guards
VPLAP0008



Rear Lamp Guards
VPLAP0009



Raised Air Intake
VPLAP0018
Not compatible with 5.0L LR-V8 Petrol models.
Additional parts are required for 3.0L TDV6 and 3.0L SDV6 models:
Hose LR013711
Elbow PHD000714



Bright Finish Mirror Caps
Upper – VPLMB0041



Protection Bar
VPLAP0022
Made from soft-feel polyurethane. Compatible with the Electric Winch. Driving Lamp Kit not included.



Driving Lamp Mounting Brackets
Pair - Direct to Bumper VPLAV0020
Pair - For use with Protection Bar VPLAV0021

Driving Lamp Kit
VPLAV0019
High performance halogen driving lamps supplied with covers.
Additional mounting brackets required. Not compatible with Electric Winch (VUB501471)



Stainless Steel Rear Bumper Tread Plate
LR006874

EXTERIOR STYLING – ACCESSORIES



Fixed Side Steps
VPLAP0035



Side Protection Tubes, Stainless Steel
VTD500020

Side Protection Tubes, Black Steel
(not shown) VTD500010



Stainless Steel Trim Finisher Kit:
Includes Lower Door Trim Finishers and a Tailgate Trim Finisher
VPLAB0044



Body Side Mouldings with Bright Insert
VPLAP0013

Body Side Mouldings without Bright Insert
(not shown) VPLAP0012

CARRYING & TOWING - ACCESSORIES



Tow Ball Mount
RAA560

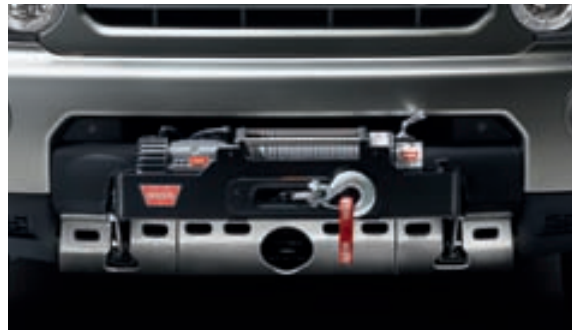


**'N' and 'S' Type
Towing Electrics****
VPLAT0011
Provides all trailer rear lighting and interior equipment power,
where required. Standard fit all models.



Underbody Protection (non winch version)
VPLAP0024

Underbody Protection* (winch version)
(shown below) VPLAP0025



Electric Winch†
VUB501471
4,300kg (9,500lb) maximum load capacity. Includes cover for protection
when not in use. Plug-in remote control allows safe operation from up
to 3.6 metres. Compatible with Protection Bar (VPLAP0022).

Winch Accessory Kit
(not shown) STC53202
Includes strap, snatch block, two shackles, heavy duty gloves
and a storage bag.

Tracking Target Sticker*
(not shown) LR021589
Required for vehicles equipped with the Surround
Camera System option which includes Tow Assist.

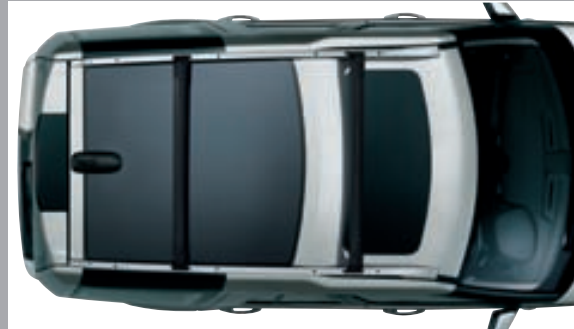
*Required for vehicles fitted with Trailer Assist option.
****Please Note:** These Accessories are not suitable for Caravans,
Trailers or Lighting Boards fitted with rear-mounted LED Lamp Kits.
†Underbody protection not included.

CARRYING & TOWING – ACCESSORIES



Short Roof Rail Kit – Bright Finish*
CAP500090

Short Roof Rail Kit – Black Finish*
(not shown) CAB500120PVJ



Full Length Roof Rail Kit – Bright Finish*
LR006442
Cross Bar Kit not included.



Luggage Box*
VPLDR0003
Lockable for security. Opens from both sides. External dimensions: 1,600mm long, 960mm wide, 410mm high. Volume 450 litres. Load capacity 54.8kg.



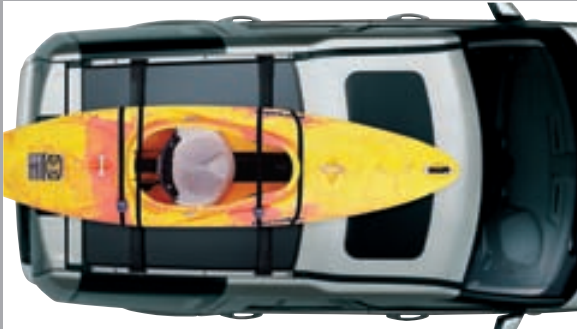
Sports Box*
VPLDR0002
Lockable for security. Can be mounted either side for kerbside opening in any country. Internal retention system for skis or other long loads. External dimensions: 2,300mm long, 620mm wide, 390mm high. Volume 400 litres. Load capacity 56.3kg.

Cross Bar Kit – Bright Silver Finish
LR007472
Adjustable position crossbars, for carrying all Land Rover roof mounted accessories featured. Easily removed when not in use. Lockable for security. Vehicle height when fitted 1,980mm at normal ride height. Load capacity 71.8kg. Vehicle must have factory-fit roof rails fitted or Roof Rail Kit CAB500120PVJ (not shown)/CAP500090/LR006442



Luggage Carrier*
LR006848
Load capacity 62.6kg.

*Roof Rails and Cross Bars are required for all Land Rover roof mounted accessories. Objects placed above the roof mounted satellite antenna may reduce the quality of the signal received by the vehicle and could have a detrimental effect on the navigation and satellite radio systems, if fitted.



Aqua Sports Carrier*
LR006846

Carries one surfboard or sailboard and mast, or one canoe or kayak. Load capacity 45kg.



Lashing Eye Kit*
VUB503160

Six additional tie-down points for use with Crossbar T-slots.



Rear Access Ladder
AGP780020



Ski and Snowboard Carrier*
LR006849

Lockable for security. Carries four pairs of skis or two snowboards. Incorporates slider rails for easy loading. Load capacity 36kg.



Ratchet Strap
CAR500010

Nylon tie strap for securing items to the Crossbars or Luggage Carrier. 5 metres long, 20mm wide. Supplied individually.

INTERIOR STYLING - ACCESSORIES



Dog Guard
VUB501170

Easily removed. Can be fitted with Loadspace Rubber Mat (LR006401), Rigid Loadspace Protector (EBF500080) and used with standard Loadspace cover. Not suitable for use as a Cargo Barrier (not shown) (RAA559).



Dog Guard Divider
EOH500040

Lockable outer gate on one side. Must be fitted with Dog Guard VUB01170. Not Compatible with Cargo Barrier RAA559. Can be fitted with Loadspace Rubber Mat and Rigid Loadspace Protector (EBF500080). Not compatible with standard loadspace cover.



Flexible Loadspace Protector
VPLAS0002

Heavy duty fabric protects loadspace up to window height. Also covers loadspace floor with second row seats folded. Includes heavy duty gloves.



Rigid Loadspace Protector
EBF500080

Cargo Barrier and Cargo Divider compatible.
EBF500010
Not compatible with Cargo Barrier.



Loadspace Rubber Mat
LR006401

Waterproof with retaining lip and non-slip surface.



Stainless Steel Sill Tread Plate
EBN500041

Covers front and rear door sills.



Rubber Mat Set
LR006237

Rubber Mats, Third Row (not shown) EAH500100PMA



Load Retention Net
VUB503130

Utilises loadspace tie-down points. Includes floor net and two ratchet straps. Strap length approximately 2 metres.



Electric Cool Bag
VUP100140L

Powered by the 12 volt auxiliary socket. Thermostatically controlled temperature. Easy clean interior surface. Height 380mm, length 380mm, width 220mm. Volume 14 litres.



Premium Carpet Mat Set
Deep pile carpet with waterproof backing.
Ebony – VPLAS0022PVJ



Premium Carpet Mat Set
Deep pile carpet with waterproof backing.
Nutmeg – VPLAS0022SVB

TOURING ACCESSORIES

iPod Link Lead
(not shown) LR019691
Integrate the latest iPod technology into the vehicle audio system. In addition the link lead also acts as a charger for your iPod device.
iPod is a trademark of Apple Inc., registered in the US and other countries.

Bulb Kit
(not shown) VPLAV0018

Warning Triangle
(not shown) KCC500021

First Aid Kit
(not shown) STC7642

Tow Strap
(not shown) STC8919AA
Includes storage bag that can be attached as a warning flag to the strap. 3,000kg maximum load capacity.

Touch-up Paints
(not shown)
A comprehensive range of touch-up paint sticks and aerosols to help your Discovery 4 look as good as new despite those minor chips and scrapes. Consult your Land Rover Dealer for further details.







Our plan for a sustainable future.

We take our responsibility to our planet very seriously, with an integrated and innovative approach for a sustainable business and lower carbon world. As a company we are committed to:

Reducing our dependency on fossil fuels and the production of man-made CO₂ emissions...

Using fewer resources and creating less waste...

Enthusiasing our employees and stakeholders for sustainable business development

At Land Rover we do this by investing in four key areas:



e_TERRAIN TECHNOLOGIES. EFFICIENT POWER SYSTEMS; LIGHTWEIGHT STRUCTURES, REDUCED EMISSIONS

A joint £800m investment into new technologies designed to reduce CO₂ emissions and improve fuel consumption. We are targeting a 25 percent reduction in joint fleet average tailpipe CO₂ emissions within the next five years. Beginning with an intelligent Stop/Start system on Freelander 2 diesel manual, followed by Intelligent Power Systems Management (IPSM) with Smart regenerative braking on all Discovery 4, Freelander 2 and Range Rover vehicles, to the announcement of our new compact Range Rover, e_TERRAIN TECHNOLOGIES form a fundamental part of our carbon management plan.

Freelander 2 with intelligent Stop/Start now has 165g/km CO₂ emissions



SUSTAINABLE MANUFACTURING. USING FEWER RESOURCES AND CREATING LESS WASTE

World class manufacturing facilities, certified to ISO14001 since 1998. As a company we are targeting a 25 percent reduction in operating CO₂ emissions by 2012, 25 percent in waste to landfill and 10 percent in water consumption, based off 2007 levels. Going forward we are measuring our total operating carbon footprint and setting targets to reduce it; since 2006 this integrated approach has included the carbon offset of all manufacturing assembly CO₂ emissions from our Solihull and Halewood plants. But it doesn't stop there. Every new vehicle is designed to be 95 percent recoverable and reusable – with 85 percent that's recyclable and a further 10 percent that can be used to generate energy.

In 2009, we reduced our CO₂ emissions by 26,550 tonnes, water consumption by 192,000m³ and 1,300 tonnes to landfill



CO₂ OFFSETTING. INVESTING IN RENEWABLE ENERGY, TECHNOLOGY CHANGE AND ENERGY EFFICIENCY PROJECTS

For every tonne of CO₂ emitted during the manufacturing assembly of all our vehicles, Land Rover invests in carbon reduction projects that reduce an equivalent tonne of CO₂ elsewhere. In addition, we enable our customers to offset their first 45,000 miles/72,000 km of driving in their new vehicles. We do this in the UK as well as countries in Europe, the Middle East and Asia (not Australia). Independently administered by ClimateCare and governed by a body of climate change experts, CO₂ offsetting allows us to take action now, to reduce our impact on the environment as part of our integrated carbon management plan.

Land Rover currently has 19 emissions reduction projects in our plan to offset approximately 2,500,000 tonnes of CO₂ by 2012...

Our customers in the Middle East have contributed over \$1,650,000 to this target since October 2008...

We have three Gold Standard projects in the portfolio: energy efficient stoves in Uganda and Ghana and wind generation in Aliaga Turkey



CONSERVATION AND HUMANITARIAN PARTNERSHIPS. WORKING PARTNERSHIPS FOR CONSERVATION & SOCIETIES GAIN

Our vehicles are designed for purpose, so are used by conservation and humanitarian organisations worldwide. Working with our five Global Conservation partners and the International Federation of Red Cross and Red Crescent Societies (IFRC), Land Rover is proud to support the important work of the Royal Geographical Society (with IBG), The Born Free Foundation, Earthwatch Institute, Biosphere Expeditions and the China Exploration and Research Society.

As part of our Sustainability policy Land Rover has actively promoted responsible off-road driving since 1990...

This year Land Rover launched a new three-year global initiative with the IFRC entitled 'Reaching Vulnerable People around the World' through which Land Rover aims to support IFRC's life saving work. To date Land Rover has given over £2.5m worth of support to IFRC, including vehicle donations and funds raised

To find out more visit landrover.com.au/ourplanet



IN SUPPORT OF



International Federation of Red Cross and Red Crescent Societies

www.landrover.com.au

WARRANTY. A comprehensive manufacturer's warranty is a feature of every Land Rover vehicle and extends to any genuine Land Rover accessories fitted by a Land Rover Dealer. The warranty period for the vehicle is three years/100,000 kilometres. In addition, the paint surface is also covered for three years/100,000 kilometres and the body work covered for corrosion for six years.

LAND ROVER ROADSIDE ASSISTANCE. All Land Rover vehicles purchased in Australia benefit from complimentary Land Rover Roadside Assistance service for the length of the new car warranty. This covers you Australia-wide 24 hours per day every day. And because it is Land Rover Assistance, help will also be provided if you become bogged or disabled on roads that only four-wheel drives can travel.

CUSTOMER CARE. Land Rover Australia has a dedicated Customer Care Centre to assist owners who may have a general query. Owners seeking this level of assistance are invited to phone our Customer Care Centre on the toll-free number 1800-625-642 or email enquiries @ landrovercustomers.com.au. Land Rover ownership includes a package of benefits designed to provide high standards of after sales care and support.

LAND ROVER FINANCIAL SERVICES. Just as Land Rover lets you tailor a vehicle to your specific requirements, we offer you the same service when it comes to finance. You can arrange to purchase and finance your Land Rover from the people who know it best – your Land Rover Dealer. Your Land Rover Business Manager can explain the full range of finance options available from Land Rover Financial Services and provide expert advice to help tailor a finance package to best suit your needs. To discover more about Land Rover Financial Services visit your nearest Land Rover Dealer, call 1800 037 711 or visit www.landroverfinancialservices.com.au for more information.

IMPORTANT NOTICE: This publication is intended for international usage and whilst Land Rover take the utmost care in ensuring that all details in the publication are correct at the time of going to press, we are constantly striving for improvement and therefore reserve the right to alter specifications and equipment without notice. Details of specifications and equipment are also subject to change to suit local market conditions and requirements, and not all products are available in every market. Some vehicles are shown with accessories or optional equipment fitted.

All Land Rover Approved Accessories fitted by a Land Rover Dealer within one month or 1,600 kilometres (which ever occurs first) of the handover of a new registered vehicle will benefit from the same warranty terms and period of cover as the vehicle warranty. Accessories purchased outside of these parameters will be subject to 12 month unlimited mileage warranty. All Land Rover Approved Accessories are rigorously tested to the same exacting standards as those applied to our vehicles. Performance in extreme hot and cold temperatures, corrosion resistance, impact and airbag deployment highlight some of the exhaustive product testing carried out to ensure accessories are both durable and importantly, continue to comply with current legislation. All our accessories are designed to be an integral part of Land Rover vehicles. While many items such as roof carriers are simple to fit, some products require specialist tools and diagnostic equipment to ensure correct integration with the vehicle structure and electrical systems. These products vary from market to market, please consult your Land Rover Dealer who will be pleased to advise you on current specifications and any query you may have. Distributors and Dealers are not agents of Land Rover and have absolutely no authority to bind Land Rover to any express or implied undertaking or representation.

The colours reproduced here are subject to the limitations of the printing process and may therefore vary slightly from the actual vehicle. The company reserves the right to alter or withdraw any colour finish without notice. Some of these colours may not be obtainable in your country. Please check availability of colours and current specifications with your Land Rover Dealer. Distributors and Dealers are not agents of Land Rover and have absolutely no authority to bind Land Rover to any express or implied undertaking or representation.

Jaguar Land Rover Australia Pty Ltd
Trading as Land Rover Australia
ABN 86 004 352 238
Level 1, 65 Epping Road, North Ryde NSW 2113
Locked Bag 2213, North Ryde NSW 1670
Telephone: 1800 809 308
www.landrover.com.au

©Jaguar Land Rover Australia Pty Ltd 2010
Publication Number: LRML 3336/10



BY APPOINTMENT
TO HM THE QUEEN
MANUFACTURERS OF
LAND ROVER VEHICLES
LAND ROVER, WARWICK



BY APPOINTMENT
TO HRH THE DUKE OF EDINBURGH
MANUFACTURERS OF
LAND ROVER VEHICLES
LAND ROVER, WARWICK



BY APPOINTMENT
TO HRH THE PRINCE OF WALES
MANUFACTURERS OF
LAND ROVER VEHICLES
LAND ROVER, WARWICK



GO BEYOND