

RANGE ROVER EVOQUE

RANGE ROVER EVOQUE

The most exciting vehicle in a generation. Bold and sophisticated in design. Nothing else looks like it, feels like it, or drives like it. The Range Rover Evoque is smaller, lighter – the most efficient Range Rover... ever. A true Range Rover in compact form, a new class of SUV. Available in two distinct bodystyles. Range Rover Evoque and Range Rover Evoque Coupé. Range Rover Evoque, the five-door version with its sleek, striking design and a more practical profile to suit specific lifestyle needs. And Range Rover Evoque Coupé, the compact crossover.

Range Rover Evoque's bold, assertive design is available in three distinct derivatives – Pure, Prestige and Dynamic – offering a tempting array of choices and technology.

Vehicle shown Range Rover Evoque Coupé Prestige in Fuji White with optional 20 inch Sparkle Silver Alloy Wheels 'Style 6' and privacy glass





CONTENTS

Luxury pages 2-3

Design pages 4-5

Technology pages 6-7

Sustainability pages 8-9

Pure pages 10-15

Prestige pages 16-21

Dynamic pages 22-27

Dynamic Plus pages 28-30

Sensational Light and Space page 31

Dimensions & Capabilities pages 32-33

Our Planet pages 34-35

Vehicle shown Range Rover Evoque Prestige
in Firenze Red with optional 20 inch Sparkle
Silver Alloy Wheels "Style 6" and privacy glass



Unsurpassed interior luxury.
Pure contemporary craftsmanship.



The luxury of choice.
Beautifully crafted. Superbly designed.

A creative use of the latest materials complementing traditional materials. Offering more colour and flair. Offering more opportunity for individual expression as part of a personal journey.





Design

Carefully created by Range Rover designers to give more opportunity for individual expression and to make every journey more personal. It is the true Range Rover experience on a compact scale.

There is a sumptuous Oxford leather wrapped interior, beautifully hand-finished with twin-needle stitching on Prestige and Dynamic Plus derivatives. And premium, soft-touch materials and grained leather on the Pure and Dynamic derivatives. And real metal finishers that are cool to the touch.

There is also the choice of a full-size, fixed panoramic glass sunroof, which cleverly creates a sensation of space and light. The toughened glass has a dark tint.

Technology



The high-definition, eight-inch colour Touch-screen is easy to use with exceptionally clear, contemporary graphics.

Included as part of the Pure Tech pack and standard on Prestige and Dynamic derivatives.



Range Rover Evoque is packed with clever, relevant technology including state-of-the-art connectivity. This includes Bluetooth® for both hands free connection, with a compatible mobile phone, to the vehicle's in-built phone system and audio streaming for the enjoyment of personal music from a portable Bluetooth® device via the audio system. Essential connectivity for iPod, MP3 and memory sticks is also provided via direct inputs. Technology plays a key role at the driver's interface with the vehicle.

iPod is a registered trademark of Apple Inc., registered in the US and other countries. The Bluetooth® word mark and logos are owned by the Bluetooth SIG, Inc. and any use of such marks by Land Rover is under licence.



Range Rover Evoque can be enhanced with ambient LED mood lighting. This can be configured to suit personal tastes with a choice of five colours and a variety of brightness settings. To add a real sense of occasion automatic colour changes are activated when the driver chooses Dynamic mode* on Terrain Response®, changing the ambient lighting to red.

*Only available with Adaptive Dynamics



With its lightweight and more compact footprint, the Range Rover Evoque offers quicker responses and greater agility. Available as an option on Prestige and Dynamic models with SD4 and Si4 engines, Adaptive Dynamics with advanced MagneRide™ monitors vehicle movements at least 1000 times per second, reacting to driver or road inputs instantaneously to give greater control, providing a balanced, flat ride.



Like every Range Rover vehicle, Range Rover Evoque optimises performance, capability and safety in all on and off-road conditions. It does this by employing a suite of innovative technologies including Terrain Response®, which adapts Range Rover Evoque's engine, transmission and electronic systems to maximise driveability, comfort and traction.

There are four Terrain Response® settings: General Driving, Grass/Gravel/Snow, Mud & Ruts, and Sand. A fifth Dynamic setting is added when Adaptive Dynamics is specified. Other cutting-edge technologies include the Land Rover patented Hill Descent Control (HDC), Gradient Release Control (GRC) and Hill Hold as well as Dynamic Stability Control (DSC), Electronic Traction Control (ETC) and Roll Stability Control.



Range Rover Evoque's advanced lighting technology achieves outstanding performance and a most striking signature design element.

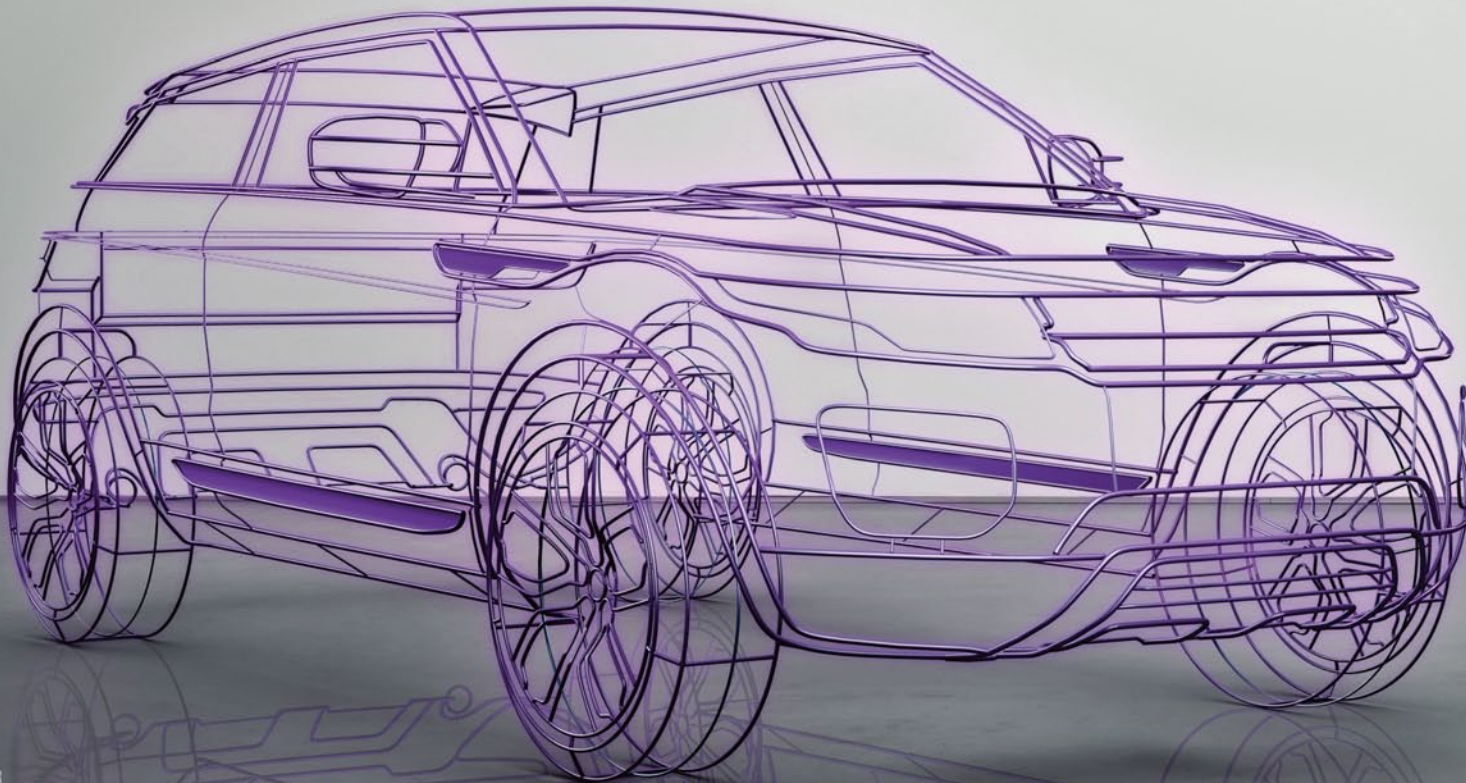
Innovative LED lighting systems are used to create the unique graphics of the front daytime running lights and complex 3D 'petal' design in the rear lamps. Bi-Halogen projector lamps with a single pocket LED daytime running lamp are standard on Pure theme. Xenon equipped models feature unique 'light blade' technology creating bright, crisp lines and forms the stunning signature graphic. In addition all vehicles are specified with LED front fog lamps set into the front bumper cut out with complex reflectors.

Up front safety during night-time driving is enhanced with the optional availability of Adaptive Xenon headlamps. These have an adaptive feature to provide added illumination in tight bends, and can be upgraded with Automatic High Beam Assist which detects light from oncoming traffic and switches automatically between high and dipped beams.

Our Plan for Sustainability

The all-new Range Rover Evoque is the smallest, lightest and most compact Range Rover ever.

A compact footprint and sleek design help to minimise weight and improve aerodynamic performance, while delivering sporty, agile handling. Evoque features a more economical range of petrol and diesel engines. A four-cylinder diesel with the availability of stop/start technology. And an all-new, state-of-the-art, turbocharged four-cylinder Si4 petrol engine which gives six-cylinder performance and feel with four-cylinder economy.



State-of-the-art turbocharged four-cylinder engines

Diesel vehicles feature the latest 2.2 litre turbodiesel, available in two forms - 140kW (SD4) and 110kW (TD4) both in 4WD form plus a 110kW (eD4 2WD)* version, to deliver superb torque, responsive performance and impressive refinement.

The Si4 petrol engine is a 2.0 litre engine in a lightweight all-aluminium unit with the latest direct-injection technology, advanced turbocharging and twin independent variable valve timing to help lower fuel consumption and CO₂ emissions by up to 20 percent compared with traditional larger capacity engines.

With the front wheel drive option, this is a Range Rover capable of delivering sub 130g/km of CO₂ emissions. It's an opportunity for more people than ever before to get into a Range Rover.

Advanced lightweight, sustainable materials

To reduce weight and improve fuel efficiency, Range Rover Evoque uses the most advanced lightweight materials. Aluminium, magnesium and titanium components contribute towards its gentler carbon footprint.

Carefully designed to maximise the use of more sustainable manufacturing materials, each vehicle uses approximately 16kg of recycled plastic and 21kg of natural and renewable materials.† Electric power-assisted steering (EPAS) also contributes to making Range Rover Evoque the most sustainable Range Rover model ever by reducing fuel consumption, and by eliminating the wasted energy in a conventional power steering system, EPAS further reduces CO₂ emissions.

*Introduced from November Production
†Data based on manufacturer's estimate

Pure

Range Rover Evoque takes its inspiration directly from the LRX concept car which took the motoring press by storm and captured the public's imagination across the world. With its dramatic exterior design combined with Range Rover's signature interior architecture, Range Rover Evoque is the purest expression of that original concept. It's packed with clever, relevant technologies to provide a premium experience.

Pure features include:

- Tailgate finisher in high gloss black
- Waist finisher in high gloss black
- Partial leather seats
- Satin Brushed Aluminium interior finisher
- Oxford leather steering wheel with cruise control
- Body coloured mirror caps
- 17 inch Sparkle Silver Alloy Wheels 'Style 1'
- Grille in dark Atlas finish (Coupé only) and Brunel finish (five-door models only)
- Side fender blade in dark Atlas (Coupé only), Brunel (five-door models only)
- Bonnet louvres in dark Atlas finish (Coupé only)



Vehicle shown Range Rover Evoque Coupé Pure in Fuji White with optional 20 inch Sparkle Silver Alloy Wheels 'Style 6' and Privacy Glass



SAC
ADR
ANG
ILAN
NGH
NGH

LOS ANGELES SHANGHAI LONDON PARIS NEW YORK SAO PAULO MADRID MOSCOW LOS ANGELES BERLIN MILAN SYDNEY SHANGHAI LONDON PARIS SAO PAULO MADRID MOSCOW LOS ANGELES BERLIN MILAN SYDNEY SHANGHAI LONDON PARIS NEW YORK SHANGHAI MADRID MOSCOW LOS ANGELES BERLIN MILAN SYDNEY SHANGHAI LONDON PARIS NEW YORK SAO PAULO MADRID MOSCOW LOS ANGELES BERLIN MILAN SYDNEY SHANGHAI LONDON PARIS NEW YORK MADRID MOSCOW LOS ANGELES BERLIN MILAN SYDNEY SHANGHAI LONDON PARIS NEW YORK SAO PAULO MADRID MOSCOW LOS ANGELES BERLIN MILAN SYDNEY SHANGHAI LONDON PARIS NEW YORK MADRID MOSCOW LOS ANGELES BERLIN MILAN SYDNEY SHANGHAI LONDON PARIS NEW YORK SAO PAULO MADRID MOSCOW LOS ANGELES BERLIN MILAN SYDNEY SHANGHAI LONDON PARIS NEW YORK MADRID MOSCOW LOS ANGELES BERLIN MILAN SYDNEY SHANGHAI LONDON PARIS NEW YORK SAO PAULO MADRID MOSCOW LOS ANGELES BERLIN MILAN SYDNEY SHANGHAI LONDON PARIS

RID MOSCOW BERLIN MILAN SYDNEY
ERLIN MILAN SYDNEY SHANGHAI L
MILAN SYDNEY SHANGHAI LONDON
NGHAI LONDON PARIS NEW YORK M
PARIS NEW YORK SAO PAULO MADR
PARIS NEW YORK SAO PAULO MADR



Pure is available with the following combinations.

INTERIOR THEMES

EBONY* - PARTIAL LEATHER



1. Ebony Dynamica and Ebony Grained leather seats
2. Ebony soft touch material instrument panel topper
3. Ebony soft touch material mid section
4. Satin Brushed Aluminium centre console finisher
5. Satin Brushed Aluminium trim finisher

ALMOND* - PARTIAL LEATHER



1. Almond Dynamica and Almond Grained leather seats
2. Espresso soft touch material instrument panel topper
3. Almond soft touch material mid section
4. Satin Brushed Aluminium centre console finisher
5. Satin Brushed Aluminium trim finisher

EBONY - FULL LEATHER



1. Ebony Grained leather seats
2. Ebony soft touch material instrument panel topper
3. Ebony soft touch material mid section
4. Satin Brushed Aluminium centre console finisher
5. Satin Brushed Aluminium trim finisher

ALMOND - FULL LEATHER



1. Almond Grained leather seats
2. Espresso soft touch material instrument panel topper
3. Almond soft touch material mid section
4. Satin Brushed Aluminium centre console finisher
5. Satin Brushed Aluminium trim finisher

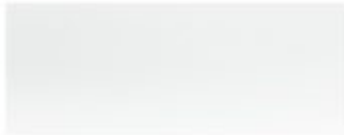
CIRRUS - FULL LEATHER



1. Cirrus Grained leather seats
2. Lunar soft touch material instrument panel topper
3. Cirrus soft touch material mid section
4. Satin Brushed Aluminium centre console finisher
5. Satin Brushed Aluminium trim finisher

EXTERIOR COLOURS

FUJI WHITE



INDUS SILVER



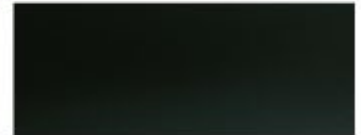
SUMATRA BLACK



ORKNEY GREY



GALWAY GREEN



IPANEMA SAND



FIRENZE RED†



COLIMA LIME†



BUCKINGHAM BLUE



MAURITIUS BLUE†



ALLOY WHEELS

STANDARD*

OPTIONS



17 INCH SPARKLE
SILVER ALLOYS
STYLE 1



18 INCH SPARKLE
SILVER ALLOYS
STYLE 2



19 INCH SPARKLE
SILVER ALLOYS
STYLE 3
(Coupe Only)



19 INCH SPARKLE
SILVER ALLOYS
STYLE 4
(Evoque 5dr† Only)



19 INCH DIAMOND
TURNED ALLOYS
STYLE 5



20 INCH SPARKLE
SILVER ALLOYS
STYLE 6

Please Note: When choosing a vehicle fitted with specific wheel and tyre combinations or optional wheels and tyres, your intended use of the vehicle should be considered. Wheels with larger diameters and lower profile tyres may offer certain styling or driving benefits, but may be more vulnerable to damage. Please discuss your requirements at your Land Rover Dealer when selecting your vehicle and specification.

*Introduced from November Production

†Estimated availability November Production

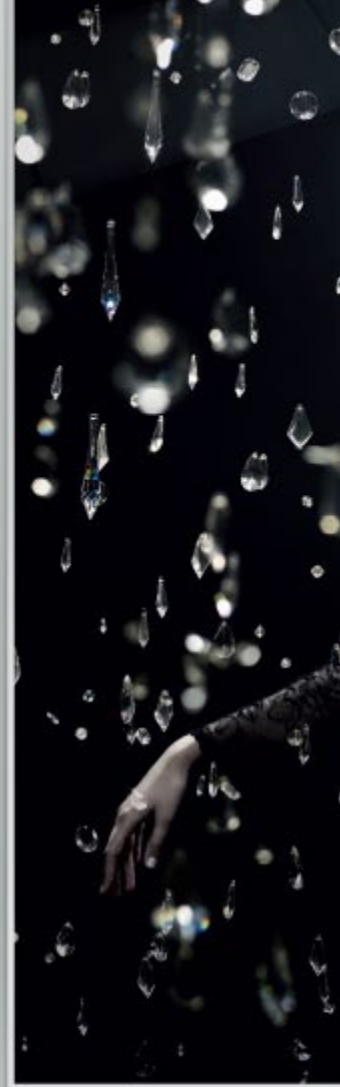


Prestige

Ultimate Range Rover luxury, combining an enhanced exterior with unique alloy wheels and dramatic premium bright finish details. A bold evolution of Range Rover design. With a sumptuous, leather-wrapped interior. The sight and touch of the finest materials. The allure of the unique colours. For all of the senses, the experience is remarkable.

Prestige features include:

- Front grille, tailgate finisher, lower side blade and side fender blade in Atlas
- Bonnet louvers in Atlas (Range Rover Evoque Coupé only)
- Waist finisher in Atlas (Range Rover Evoque only)
- 19" Alloy Wheels 'Style 5' – Diamond Turned
- Xenon headlamps with signature LED lighting
- Oxford leather for seats and extended Oxford leather throughout interior
- Five unique interior themes
- 8" high resolution touch-screen
- 11 speakers including subwoofer 380 Watt Meridian™ Surround Sound System
- Customer Configurable Interior mood lighting







Prestige is available with the following combinations.

INTERIOR THEMES

SPIRIT	COUTURE	VIBE	AMBIANCE	ELEMENT
				
				
				
				
				
<p>1. Tan Oxford leather seats with Ivory contrast stitch</p> <p>2. Espresso Oxford leather instrument panel topper</p> <p>3. Ivory Oxford leather mid section</p> <p>4. Satin Brushed Aluminium centre console finisher</p> <p>5. Satin Brushed Aluminium trim finisher</p>	<p>1. Ivory Oxford leather seats with Ivory stitch</p> <p>2. Dark Cherry Oxford leather instrument panel topper</p> <p>3. Ivory Oxford leather mid section</p> <p>4. Satin Brushed Aluminium centre console finisher</p> <p>5. Satin Brushed Aluminium trim finisher</p>	<p>1. Ebony Oxford leather seats with Ivory contrast stitch</p> <p>2. Ebony Oxford leather instrument panel topper</p> <p>3. Ebony Oxford leather mid section</p> <p>4. Satin Brushed Aluminium centre console finisher</p> <p>5. Satin Brushed Aluminium trim finisher</p>	<p>1. Ivory Oxford leather seats with Espresso contrast stitch</p> <p>2. Espresso Oxford leather instrument panel topper</p> <p>3. Ivory Oxford leather mid section</p> <p>4. Satin Brushed Aluminium centre console finisher</p> <p>5. Satin Brushed Aluminium trim finisher</p>	<p>1. Cirrus Oxford leather seats with Lunar contrast stitch</p> <p>2. Lunar Oxford leather instrument panel topper</p> <p>3. Cirrus Oxford leather mid section</p> <p>4. Satin Brushed Aluminium centre console finisher</p> <p>5. Satin Brushed Aluminium trim finisher</p>
<p>NO COST OPTION</p> 	<p>NO COST OPTION</p> 	<p>NO COST OPTION</p> 	<p>NO COST OPTION</p> 	<p>NO COST OPTION</p> 
<p>6. Figured Macassar wood trim finisher</p>	<p>COST OPTION</p>  <p>6. Figured Macassar wood trim Finisher</p> <p>7. Botanical Aluminium centre console and trim Finisher</p>	<p>COST OPTION</p>  <p>6. Dark Grey Oak wood trim Finisher</p> <p>7. Botanical Aluminium centre console and trim Finisher</p>	<p>COST OPTION</p>  <p>6. Figured Macassar wood trim Finisher</p> <p>7. Botanical Aluminium centre console and trim Finisher</p>	<p>COST OPTION</p>  <p>6. Dark Grey Oak wood trim Finisher</p> <p>7. Botanical Aluminium centre console and trim Finisher</p>

Interior theme shown Prestige in Spirit – Tan/Ivory

Prestige is available with the choice of either a matching or contrast roof colour.†

EXTERIOR BODY COLOUR

		MATCHING ROOF COLOUR	CONTRAST ROOF COLOUR†		
			Indus Silver	Sumatra Black	Fuji White
	Buckingham Blue	■	□	–	□
	Colima Lime*	■	□	□	□
	Firenze Red*	■	□	□	□
	Fuji White	■	–	□	–
	Indus Silver	■	–	□	–
	Ipanema Sand	■	–	□	–
	Galway Green	■	□	□	□
	Mauritius Blue* (Introduced 2012)	■	□	□	□
	Sumatra Black	■	□	–	□
	Orkney Grey	■	□	□	□



Vehicle shown Range Rover Evoque in Orkney Grey with body colour roof (standard)



Vehicle shown Range Rover Evoque in Orkney Grey with optional Fuji White contrast colour roof



Vehicle shown Range Rover Evoque in Orkney Grey with optional Indus Silver contrast colour roof



Vehicle shown Range Rover Evoque in Orkney Grey with optional Sumatra Black contrast colour roof

■ Standard □ Option – Not available

Contrast roof available on both Range Rover Evoque and Range Rover Evoque Coupé
For illustrative purposes only. Contrast roof combinations may be subject to change

† Not available on Range Rover Evoque Pure
* Estimated availability November Production

ALLOY WHEELS

STANDARD



19 INCH SPARKLE
SILVER ALLOYS
"STYLE 3"
(Coupé Only)



19 INCH SPARKLE
SILVER ALLOYS
"STYLE 4"
(Evoque 5dr Only)



19 INCH DIAMOND
TURNED ALLOYS
"STYLE 5"



20 INCH SPARKLE
SILVER ALLOYS
"STYLE 6"



20 INCH SHADOW
CHROME ALLOYS
"STYLE 7"



20 INCH POLISHED
SILVER ALLOYS
"STYLE 8"

OPTIONS



Dynamic

A sports-orientated take on the Range Rover Evoque design theme but with a more assertive, athletic stance. Its muscular attitude is emphasised by strong design cues. The bold exterior, with unique bumpers, sills, grille and tailpipes, is twinned with a premium sports interior with leather seats and unique detailing. The sweeping curve of the roof can be further highlighted with the availability of a contrast colour.

Dynamic features include:

- Dynamic front bumper, side sills and rear bumpers with integrated Dynamic exhaust
- Front grille, tailgate finisher and side fender blade in Narvik Black
- Exterior mirror caps in Narvik Black
- Bonnet louvers in Narvik Black (Range Rover Evoque Coupé only)
- Aerofoil on rear spoiler in Narvik Black
- 19" Alloy Wheels 'Style 3' (Range Rover Evoque Coupé only)
- 19" Alloy Wheels 'Style 4' (Range Rover Evoque only)
- Xenon headlamps with signature LED lighting
- Dynamic grained leather perforated seats with contrast stitching and extended Oxford leather throughout interior
- Four unique interior themes
- 8" high resolution touch-screen
- 11 speakers including subwoofer 380 Watt Meridian™ Sound System
- Custom Configurable Interior mood lighting







Dynamic is available with the following combinations.

INTERIOR THEMES

VORTEX



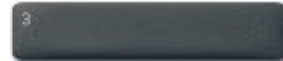
1. Ebony Perforated leather seats with Cirrus contrast stitch
2. Ebony soft touch material instrument panel topper
3. Ebony soft touch material mid section with Ivory contrast stitch
4. Textured Aluminium centre console finisher
5. Textured Aluminium trim finisher

COST OPTION



6. Satin Brushed Aluminium centre console finisher
7. Gloss Black Strata trim finisher

PURSUIT



1. Ivory Perforated leather seats with Lunar leather seat insert and Ivory contrast stitch
2. Lunar soft touch material instrument panel topper
3. Lunar soft touch material mid section with Ivory contrast stitch
4. Textured Aluminium centre console finisher
5. Textured Aluminium trim finisher

COST OPTION



6. Satin Brushed Aluminium centre console finisher
7. Gloss Black Strata trim finisher

VERVE



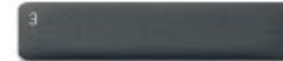
1. Pimento Perforated leather seats with Ebony seat insert and Pimento contrast stitch
2. Ebony soft touch material instrument panel topper
3. Ebony soft touch material mid section with Pimento contrast stitch
4. Textured Aluminium centre console finisher
5. Textured Aluminium trim finisher

COST OPTION



6. Satin Brushed Aluminium centre console finisher
7. Gloss Black Strata trim finisher

ENERGY



1. Lunar Perforated leather seats with Savannah leather seat insert and Savannah contrast stitch
2. Lunar soft touch material instrument panel topper
3. Lunar soft touch material mid section with Savannah contrast stitch
4. Textured Aluminium centre console finisher
5. Textured Aluminium trim finisher

COST OPTION



6. Satin Brushed Aluminium centre console finisher
7. Gloss Black Strata trim finisher

Dynamic is available with the choice of either a matching or contrast roof colour.†

EXTERIOR BODY COLOUR

		MATCHING ROOF COLOUR	CONTRAST ROOF COLOUR†		
			Indus Silver	Sumatra Black	Fuji White
	Buckingham Blue	■	□	-	□
	Colima Lime*	■	□	□	□
	Firenze Red*	■	□	□	□
	Fuji White	■	-	□	-
	Indus Silver	■	-	□	-
	Ipanema Sand	■	-	□	-
	Galway Green	■	□	□	□
	Mauritius Blue* (Introduced 2012)	■	□	□	□
	Sumatra Black	■	□	-	□
	Orkney Grey	■	□	□	□



Vehicle shown Range Rover Evoque in Firenze Red with body colour roof (standard)



Vehicle shown Range Rover Evoque in Firenze Red with optional Fuji White contrast colour roof



Vehicle shown Range Rover Evoque in Firenze Red with optional Indus Silver contrast colour roof



Vehicle shown Range Rover Evoque in Firenze Red with optional Sumatra Black contrast colour roof

■ Standard □ Option - Not available
 Contrast roof available on both Range Rover Evoque and Range Rover Evoque Coupé
 For illustrative purposes only. Contrast roof combinations may be subject to change
 † Not available on Range Rover Evoque Pure
 * Estimated availability November Production

ALLOY WHEELS

STANDARD



19 INCH SPARKLE
SILVER ALLOYS
'STYLE 3'
(Coupé Only)



19 INCH SPARKLE
SILVER ALLOYS
'STYLE 4'
(Evoque 5dr Only)



19 INCH DIAMOND
TURNED ALLOYS
'STYLE 5'



20 INCH SPARKLE
SILVER ALLOYS
'STYLE 6'



20 INCH SHADOW
CHROME ALLOYS
'STYLE 7'



20 INCH POLISHED
SILVER ALLOYS
'STYLE 8'

OPTIONS



Dynamic Plus

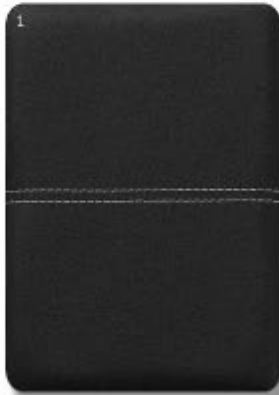


Interior theme shown Dynamic Plus in Agility – Pimento/Ebony

Dynamic Plus is available with the following combinations.

INTERIOR THEMES

VELOCITY



1. Ebony Oxford leather seats with Cirrus contrast stitch
2. Ebony Oxford leather instrument panel topper
3. Ebony Oxford leather mid section
4. Satin Brushed Aluminium centre console finisher
5. Gloss Black Strata trim finisher

NO COST OPTION



6. Textured Aluminium centre console and trim finisher

AGILITY



1. Pimento Oxford leather seats with Ebony contrast stitch
2. Ebony Oxford leather instrument panel topper
3. Ebony Oxford leather mid section
4. Satin Brushed Aluminium centre console finisher
5. Gloss Black Strata trim finisher

NO COST OPTION



6. Textured Aluminium centre console and trim finisher

Dynamic Plus features include (in addition to Dynamic):

- Gloss Black Strata interior finisher
- 8/8 electric Oxford leather front 'Sports' seats
- Oxford leather instrument panel and door tops
- Ebony Morzine headlining.



Sensational light and space

It's not just the range of interiors. It is the vast range of colour combinations that you can choose, including standout contrast colours for the roof. There are more personalisation options available than ever before. There's a panoramic roof that gives the interior a bright, airy quality whilst helping to keep out the sun's heat. An interior sunblind is also available to reduce light in the cabin on the brightest days.





Dimensions & Capabilities

Pure and Prestige



¹Dynamic

Dynamic



Wading Depth
Maximum wading depth 500mm



Height 1,605mm*/1,635mm**
 Front wheel track 1,625mm
 Width including mirrors 2,125mm
 Width with mirrors folded, 1,965mm

*Range Rover Evoque Coupé
 **Range Rover Evoque



Obstacle Clearance
 Front axle clearance 215mm
 Rear axle clearance 240mm



Turning Circle
 Kerb-to-kerb 11.3m
 Turns lock-to-lock 2.45

Luggage Capacity

Rear seats upright
 Height 840mm*/870mm** Width 1,090mm
 Loadspace volume 550 litres*/575 litres**
 Loadspace width between arches 1,000mm

Rear seats forward
 Length 1,580mm Width 1,090mm
 Loadspace volume 1,350 litres*/1,445 litres**
 Loadspace width between arches 1,000mm
 Maximum box size (width x height)
 900mm x 620mm*/900mm x 625mm**
 Maximum roof load (roof rack and cross bars
 form part of load) 75kg

Headroom
 Maximum front headroom (without sunroof) 965mm*/990mm**
 Maximum front headroom (with sunroof) 995mm*/1,025mm**
 Rear headroom (without sunroof) 945mm*/965mm**
 Rear headroom (with sunroof) 970mm*/1,010mm**

Towing
 Max Towing (Tow Pack Accessory) 4WD 1,800kg 2WD 1,500kg
 Unbraked trailer 750kg
 Maximum mass of vehicle and trailer combination (GTW)
 4WD 4,150kg 2WD 1,595kg

*Range Rover Evoque Coupé
 **Range Rover Evoque

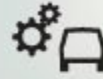


Royal Geographical Society
with IBC
Advancing geography and geographical learning



IN SUPPORT OF
 International Federation of Red Cross and Red Crescent Societies

At Land Rover we do this by investing in four key areas:



e EFFICIENT POWER SYSTEMS, LIGHTWEIGHT STRUCTURES, REDUCED EMISSIONS

A joint £800m investment into new technologies designed to reduce CO₂ emissions and improve fuel consumption. We are targeting a 25 percent reduction in joint fleet average tailpipe CO₂ emissions by 2015, as part of our carbon management plan. The all-new Range Rover Evoque and Freelander 2 vehicles include innovative stop start technology (on the diesel manual gearbox) and Intelligent Power Systems Management (IPSM) with regenerative braking, just two examples of e_TERRAIN TECHNOLOGIES that reduce our vehicles carbon footprint. What's more, Range Rover's Adaptive Dynamics System constantly monitors vehicle performance, to enhance driving and emissions efficiencies.

FACT
We will use life cycle assessment to understand the environmental impact of our vehicles, including the use of e_TERRAIN TECHNOLOGIES, beginning with Range Rover Evoque.



USING FEWER RESOURCES AND CREATING LESS WASTE

World class manufacturing facilities, certified to ISO14001 since 1998. As a company we are targeting a 25 percent reduction in operating CO₂ emissions by 2012, 25 percent in waste to landfill and 10 percent in water consumption, based on 2007 levels. Our activities include factory energy efficiencies, cutting transport miles and the carbon offset of all CO₂ emissions from manufacturing assembly. But it doesn't stop there. Every new vehicle is designed to be 85 percent recyclable and reusable, in addition 95 percent recoverable and reusable, with 10 percent specifically for energy recovery.

FACT
Turning waste food into energy in a trial at our headquarters in Gaydon, has diverted 43 tonnes of waste from landfill and saved 3.7 tonnes of CO₂ emissions.



INVESTING IN RENEWABLE ENERGY, TECHNOLOGY CHANGE AND ENERGY EFFICIENCY PROJECTS

For every tonne of CO₂ emitted during the manufacturing assembly of all our vehicles, Land Rover invests in carbon reduction projects that reduce an equivalent tonne of CO₂ elsewhere. In addition, we enable our customers to offset their first 45,000 miles/72,000 km of driving in their new vehicles. We do this in the UK as well as countries in Europe, the Middle East and Asia. Independently administered by ClimateCare and Forum for the Future, CO₂ offsetting allows us to take action now, to reduce our impact on the environment, as part of our integrated carbon management plan.

FACT

We plan to offset approximately 3,000,000 tonnes of CO₂ emissions by 2012.



WORKING PARTNERSHIPS FOR CONSERVATION AND SOCIETY'S GAIN

Our vehicles are designed for purpose, so are used by conservation and humanitarian organisations worldwide. Working with our five Global Conservation partners and the International Federation of Red Cross and Red Crescent Societies (IFRC), Land Rover is proud to support the important work of the Royal Geographical Society (with IBG), The Born Free Foundation, Earthwatch Institute, Biosphere Expeditions and the China Exploration and Research Society.

FACT

In 2010 Land Rover launched a new three-year global initiative with the IFRC entitled 'Reaching Vulnerable People Around the World'. Land Rover has supported the IFRC's life saving work since 2007 and to date has given over £4m in vital funding and vehicle support to help vulnerable people around the world.



BY APPOINTMENT TO HER MAJESTY THE QUEEN MANUFACTURERS OF LAND ROVER VEHICLES LAND ROVER, BANBURY



BY APPOINTMENT TO HER MAJESTY THE KING OF SWEDEN MANUFACTURERS OF LAND ROVER VEHICLES LAND ROVER, BANBURY



BY APPOINTMENT TO HER MAJESTY THE PRINCE OF WALES MANUFACTURERS OF LAND ROVER VEHICLES LAND ROVER, BANBURY

[.landrover.com.au](http://landrover.com.au)

IMPORTANT NOTICE: This publication is intended for international usage and whilst Land Rover take the utmost care in ensuring that all details in the publication are correct at the time of going to press, we are constantly striving for improvement and therefore reserve the right to alter specifications and equipment without notice. Details of specifications and equipment are also subject to change to suit local market conditions and requirements, and not all products are available in every market. Some vehicles are shown with accessories or optional equipment fitted. All Land Rover Approved Accessories fitted by a Land Rover Dealer within one month or 1,600 kilometres/1,000 miles (whichever occurs first) of the handover of a new registered vehicle will benefit from the same warranty terms and period of cover as the vehicle warranty. Accessories purchased outside of these parameters will be subject to 12 month unlimited mileage warranty. All Land Rover Approved Accessories are rigorously tested to the same exacting standards as those applied to our vehicles.

Performance in extreme hot and cold temperatures, corrosion resistance, impact and airbag deployment, highlight some of the exhaustive product testing carried out to ensure accessories are both durable and importantly continue to comply with current legislation. All our accessories are designed to be an integral part of Land Rover vehicles. While many items such as roof carriers are simple to fit, some products require specialist tools and diagnostic equipment to ensure correct integration with the vehicle structure and electrical systems. These products vary from market to market, please consult your Land Rover Dealer who will be pleased to advise you on current specifications and any query you may have. Distributors and Dealers are not agents of Land Rover and have absolutely no authority to bind Land Rover to any express or implied undertaking or representation. The colours reproduced here are subject to the limitations of the printing process and may therefore vary slightly from the actual vehicle. The company reserves the right to alter or withdraw any colour finish without notice. Some of these colours may not be obtainable in your country. Please check availability of colours and current specifications with your Land Rover Dealer. Distributors and Dealers are not agents of Land Rover and have absolutely no authority to bind Land Rover to any express or implied undertaking or representation.

Please recycle this brochure after use

Jaguar Land Rover Australia Pty Ltd

Trading as Land Rover Australia

ABN 86 004 352 238

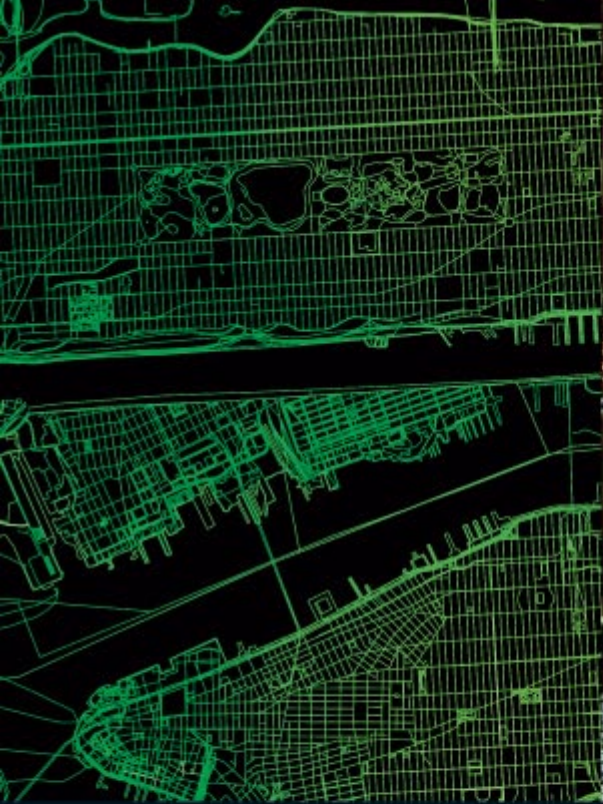
Level 1, 65 Epping Road, North Ryde NSW 2113

Locked Bag 2213, North Ryde NSW 1670

Telephone: 1800 625 642

www.landrover.com.au

©Jaguar Land Rover Australia Pty Ltd 2011 Publication Number: LR7806/0611



HELLOEVOQUE.COM



MILAN SYDNEY SHANGHAI LONDON PARIS NEW YORK SAO PAULO MADRID MOSCOW BERLIN MILAN SYDNEY SHANGHAI LONDON PARIS NEW YORK
MOSCOW BERLIN MILAN SYDNEY SHANGHAI LONDON PARIS NEW YORK SAO PAULO MADRID MOSCOW BERLIN MILAN SYDNEY SHANGHAI LONDON
NEWYORKMILANPARISSHANGHAIBERLINLONDONMADRIDMOSCOWSAOPAULO SYDNEYNEWYORKMILANPARISNEWYORKMILANPARISSHANGHAIBERLIN

