

CT



CT 200h



 LEXUS



CONTENTS

12	Brand Heritage
14	Introducing the CT 200h
16	Style and Design
20	Technology
22	Safety
24	CT 200h F Sport
24	CT 200h Hybrid
26	CT 200h Luxury
26	CT 200h Sports Luxury
28	Exterior Colours
30	Interior Trims
32	Specifications
34	Lexus Ownership Solutions
36	Encore Privileges





WHERE WILL LIFE TAKE YOU?

How would you prefer to travel the highway of life? Pampered by sumptuous luxuries, yet energised by the adrenalin rush of agile handling? In your heart you want added exhilaration, yet your head demands reduced consumption, all distilled within a stylish, compact package. Tough task. Introducing the CT 200h, the compact luxury vehicle for today's world that will accelerate your body and invigorate your mind.



TAKE A VIRTUAL TOUR

DRIVING TOWARDS TOMORROW

We're living in exciting, exhilarating times. The smart thinkers are changing the world as the status quo is being overturned and fresh ideas are breathing new life into traditional themes. At Lexus, we believe the future belongs to those who question what has gone before and strive to devise better solutions. Such thinking has created the Lexus Hybrid Drive (LHD), an engine that fuses two energy sources together to create one singularly uplifting driving experience.



THE OUTER SHELL REFLECTS THE INNER SOUL

Style is the external reflection of who you are on the inside. For some, that look can reflect a quiet inner calm; an understated contentment with who you are. Others may be more outspoken, projecting an image that tells everyone they're firmly in control. Style is also what sets the CT 200h apart. It displays a sense of poise and panache, from the signature spindle grille through to a body design sculpted by dynamic curves and elegant contours. This is the new expression of L-finesse, the design language through which Lexus speaks directly to the heart.



LOOKING INWARD WHILE MOVING FORWARD

Perhaps you seek to feel connected with the outside world, while feeling snug and secure on the inside. You want easy access to technologies that allow you to keep your finger on the pulse of life. Lexus has designed an interior that radiates around the needs of the driver. It provides you with the sense of connection and control you desire and the sublime comforts you crave.

PURSUING A NEW DEFINITION OF LUXURY

In the mid 1980s, a team of passionate designers embarked on a remarkable journey. They travelled to America and integrated themselves into an exclusive neighbourhood to better understand the intricacies of privileged lifestyles.

Designers visited upscale boutiques and exclusive country clubs to discover the true essence of western style and to learn what luxury vehicle buyers really wanted. They observed how a new definition of luxury was permeating American society. Fashion, design and architecture were being reshaped by younger, more affluent professionals who were turning their backs on conventional luxury vehicles, seeking a more rewarding driving experience.

Such a fact-finding mission was followed by one of the most extensive development programs ever undertaken by a motor vehicle company. The end result was the Lexus LS 400, a vehicle that ultimately redirected the course of luxury vehicle design, elegance and performance.

The Lexus CT 200h emerged in 2010 and marked an evolution of the Lexus hybrid revolution, as the world's first luxury hybrid hatch. It was the first Lexus equipped with Drive Mode Select, allowing drivers to fine-tune drive characteristics and cabin ambience to suit their particular mood. It showcased futuristic technologies such as its full hybrid powertrain which delivered remarkable performance while distilling the luxury of a Lexus into a compact package. Now the CT 200h has evolved even further, reflecting the dynamic new look of L-finesse expressed in Luxury, F Sport and Sports Luxury models.

Meanwhile, the Lexus commitment to ground-breaking design has forged ahead into bold new territory. A recent reminder was the unveiling of the LF-CC coupe concept at the Paris Motor Show. The LF-CC serves as a glimpse into the Lexus vehicle of tomorrow, while its new generation hybrid power plant sets new benchmarks for high performance and reduced emissions.





LUXURY FOR A NEW GENERATION

INTRODUCING THE CT 200h

To Lexus designers, CT means 'Creative Touring', yet once you slip into its intuitive interior, it will come to mean so much more. CT 200h is the Lexus for today's generation of progressive thinkers, embraced with luxury and firmly in sync with a world that is constantly on the move. Similarly, the unique Lexus design language known as 'L-finesse' has evolved, from the signature spindle grille to the flurry of curves and contours that mould its nimble body. You're also able to change its personality and responses with a simple twist of the Drive Mode Select dial.

The Lexus CT 200h is a vehicle that is sensitive to who you are, allowing you to select a model that best mirrors

your personality. CT 200h Luxury offers understated elegance with a compelling package of refinements. F Sport has been built for those with more athletic aspirations. Then there's the CT 200h Sports Luxury, a vehicle equipped with a complete portfolio of comforts and advanced technologies.

In today's world, keeping pace means keeping connected. So CT 200h is equipped with the Lexus Enform⁽¹⁾ App Suite which provides a new way to communicate with the world around you. Lexus Enform⁽¹⁾ is so special, it's reserved for Sports Luxury and F Sport models, and for Luxury models with Enhancement Packs 3 and 4. Lexus Enform⁽¹⁾

utilises your compatible iPhone[®] or Android[™] smartphone⁽²⁾ to put a wealth of information at your fingertips.

Excitement means entertainment, so CT 200h is enriched with a choice of two high quality audio systems, beginning with a 10-speaker premium system. There's also a 13-speaker audiophile quality system created by Mark Levinson[®], one of the world's pre-eminent audio designers.

A selection of paint finishes enhance the dynamic curves of the body design. Each finish is able to capture the light and create unique visual effects which accentuate the flowing curves and contours of the body design.

GETTING AHEAD MEANS GETTING NOTICED

STYLE AND DESIGN

The objective of Lexus designers was to create a hybrid vehicle with a low profile, instilling a vigorous attitude, while retaining a distinctly Lexus personality. Notice how the dynamic spindle grille erupts with a flourish of bold geometric lines, leading down into the front bumper and flowing upward into bold character lines which sweep across the bonnet and down the sides.

Headlights incorporate Daytime Running Lights (DRLs) in the 'L' configuration for improved visibility and personality. Luxury and F Sport models are equipped with halogen headlights, whilst Sports Luxury has the latest generation LED headlights, for greater illumination using less power than conventional headlights.

Electrically operated exterior mirrors with an LFA-inspired design treatment have a rain dispersing coating for ultimate clarity. They also incorporate puddle lamps, which illuminate as you approach your vehicle carrying your Smart Key, or your Smart Entry Key Card which is available with Sports Luxury and F Sport with Enhancement Pack 2 models.

Within this dynamic design treatment, certain nuances distinguish particular models. On the F Sport, the spindle grille is offset by mesh patterned inserts. This confident attitude is topped off by a contrasting black roof and a rear spoiler. Luxury and Sports Luxury models feature an elegant spindle grille design punctuated by crisp horizontal lines.

F Sport is distinguished by 10-spoke, 17" alloy wheels offset by a dark smoke finish. The CT 200h Luxury rides on 16" alloy wheels, while an additional 17" design is reserved for the Luxury Enhancement Packs and Sports Luxury models.

[DISCOVER MORE ABOUT THE CT](#)

LOCATE A DEALER

HOME

BOOK A TEST DRIVE



CT 200h Sports Luxury model shown



CT 200h Sports Luxury model shown



CT 200h Sports Luxury model shown



CT 200h Sports Luxury model shown



CT 200h Sports Luxury model shown



Overseas CT 200h Sports Luxury model shown



CT 200h Sports Luxury model shown



CT 200h F Sport model with Enhancement Pack 2 shown

INTERIOR DESIRE

STYLE AND DESIGN

When you enter a vehicle, you should feel inspired and empowered. So Lexus has designed the interior around a philosophy they call 'human orientated design', which positions what you need precisely where you need it for enhanced simplicity and control.

Visual displays are located in the upper Display Zone, which is positioned just below your line of vision for maximum visibility with minimal eye movement while driving. Switches and controls are positioned lower in the Operation Zone.

The three-spoke premium steering wheel and shift lever have been designed to impart a look of luxury and refinement. Switches on the steering wheel for the audio system, a 4.2" TFT Multi Information Display (MID) on models with Navigation⁽⁴⁾ and Bluetooth^{®(3)} allow you to make adjustments

while keeping your hands on the wheel. The F Sport steering wheel takes on a more performance focused look and bears the distinctive F Sport insignia.

The instrumentation changes depending on the drive mode you select. In 'ECO' or 'NORMAL' modes, the back lighting is blue and a hybrid meter is displayed. Switch to 'SPORT' mode and the lighting turns red, while the hybrid meter turns into a tachometer, complementing the sporting persona.

Luxury models feature fine fabrics, while a leather accented interior is offered in F Sport, Sports Luxury models and in Luxury models equipped with Enhancement Packs. For added comfort in cooler climates, front seats are heated in all but the entry-level Luxury model.

Six driver's seat adjustments in Luxury models allow you to select your optimum seating position. F Sport and Sports Luxury offer 10-way power adjustment of the driver's seat

with three memory switches for instant recall of the key seat adjustments and exterior mirror setting combinations. The rear seats have been sculpted for passenger comfort, while their split fold design allows you to carry longer items, like snowboards or golf clubs.

[DISCOVER MORE ABOUT THE CT](#)

ENGAGE THE MIND, EXCITE THE SENSES

TECHNOLOGY

With a twist of the Drive Mode Select dial, you can instantly change the vehicle to suit your mood. EV mode lets you slip quietly along at up to 45-50km/hr on electric power alone, with interior lighting a soothing blue. 'ECO' mode adds in the petrol engine and ensures relaxed vehicle responses. Feeling more energetic? 'NORMAL' mode ensures normal throttle response which is perfect for city driving.

Turn to 'SPORT' mode and the interior lighting turns red, the hybrid meter morphs into a tachometer and the electric motor delivers additional power. The throttle and steering become more responsive and the Vehicle Stability Control (VSC) and Traction Control (TRC) are reprogrammed for spirited motoring.

The Lexus Remote Touch (LRT) controller in CT 200h Luxury with Enhancement Packs, F Sport and Sports Luxury models offers easy access to the Satellite Navigation,⁽⁴⁾ Climate Control, audio settings and more. It also operates a remarkable communication system known as Lexus Enform.⁽⁷⁾ You can plan your route by sending locations to the vehicle, search for a warm bed or a cool drink along the way,⁽⁵⁾ even stream music from your Pandora account, check the weather and locate the nearest petrol station.⁽⁶⁾ That's simply a snapshot of what's at your fingertips.

Entertainment begins with a premium 10-speaker audio system with subwoofer and amplifier. F Sport, Sports Luxury and Luxury models with Enhancement Packs 3 and 4 give you the enhanced clarity of a Digital Radio⁽⁷⁾ with Time Shift functionality. F Sport with Enhancement Pack 2 and Sports

Luxury models indulge you with a premium Mark Levinson[®] audio system with 13 speakers and a Class D amplifier for breathtaking fidelity.

Satellite Navigation⁽⁴⁾ is standard in F Sport and Sports Luxury models and available in Luxury models with Enhancement Packs 3 and 4 to guide you efficiently to your destination. Even reversing is simpler with the Reversing Camera⁽⁸⁾ fitted as standard. In Sports Luxury, F Sport and Luxury models with Enhancement Packs 3 and 4, the addition of Rear Guide Assist (RGA)⁽⁹⁾ helps you judge the predicted vehicle path for greater precision.

[DISCOVER MORE ABOUT THE CT](#)



CT 200h Sports Luxury model shown



20 CT 200h Sports Luxury model shown



CT 200h Sports Luxury model shown



Overseas CT 200h Sports Luxury model shown 21

THE SERENITY OF SAFETY

SAFETY

Lexus engineers have equipped the CT 200h with many of the technologies developed for its flagship models, resulting in a 5-star ANCAP safety rating. It begins with a package of 8 Supplemental Restraint System (SRS) airbags fitted as standard, including dual stage front airbags and twin knee airbags for the driver and front passenger, front seat side airbags and full length curtain shield airbags.

Satellite Navigation⁽⁴⁾ is fitted to Sports Luxury and F Sport models, and to Luxury models with Enhancement Packs 3 and 4. This advanced system displays the location of the vehicle on a 'map' screen, and can be programmed to provide information, such as directions to a destination and relevant traffic information, both visually and with spoken messages, allowing you to keep your eyes on the road.

With the rain sensing function switched on, the wipers activate the moment rain is detected on the windscreen. Even reversing is easier, as rain dispersing coatings and heating on the exterior mirrors ensure optimum clarity.

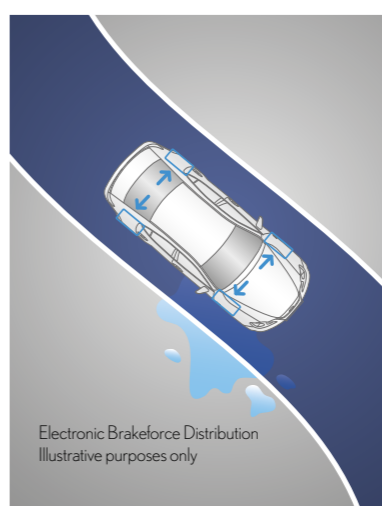
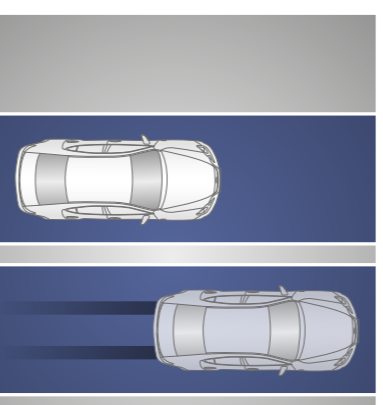
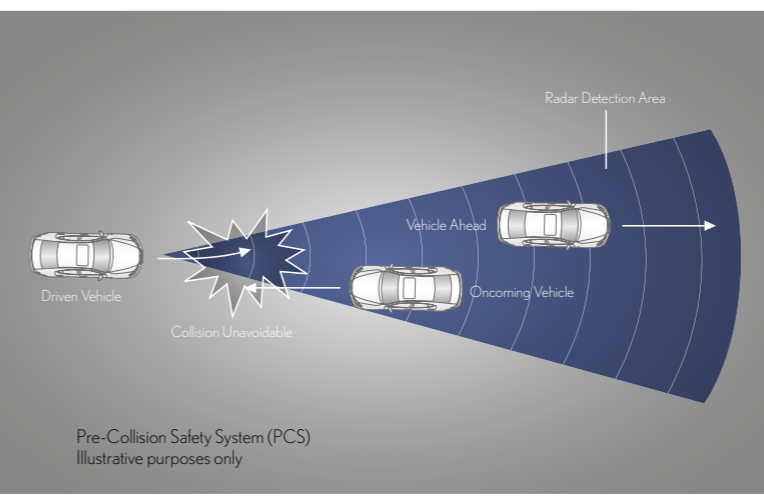
Vehicle Stability Control (VSC) uses electronic sensors in conjunction with both the Anti-lock Braking System (ABS) and Traction Control (TRC) to help deal with certain potentially dangerous situations involving loss of traction and emergency steering which you may encounter. VSC manages both the engine's output and the brake operation on each individual wheel. It immediately intervenes if it senses the car is skidding due to either oversteer or understeer.

Sports Luxury models, F Sport with Enhancement Pack 2 and Luxury models with Enhancement Packs 3 and 4 are equipped with Pre-Collision Safety System (PCS)⁽⁹⁾ which helps to anticipate the likelihood of a collision. If the system detects that a collision may be imminent, it first displays a warning on the TFT Multi Information Display (MID) and sounds an alarm. Then PCS⁽⁹⁾ arms the Pre-Collision Seatbelts (PCSB) for greater restraint and prepares the Pre-Collision Brake Assist (PCBA) to supplement your braking. If the system perceives that a collision is unavoidable, Pre-Collision Brake (PCB) can activate automatically to reduce your speed and minimise impact.

Sports Luxury models, F Sport with Enhancement Pack 2 and Luxury models with Enhancement Packs 3 and 4 are also equipped with Radar Active Cruise Control (ACC)⁽⁹⁾ an advanced cruise control system that uses a milliwave radar to detect when the vehicle is closing in on a slower vehicle in front.

When ACC is switched on, it slows the vehicle to maintain a safe gap and only accelerates back to the pre-set speed when the vehicle in front either speeds up or moves out of the way.

[DISCOVER MORE ABOUT THE CT](#)



THE THRILL IS IN THE DETAIL

CT 200h F SPORT

The moment you set eyes on the CT 200h F Sport, the heart beats a little faster. What you'll first notice are the 17" F Sport alloy wheels, F Sport badging and roof mounted rear spoiler. As you step inside, you're greeted by a leather accented interior in your choice of F Sport Dark Rose or F Sport Black, each complemented by Wedge Metal aluminium mouldings. The Lexus Remote Touch (LRT) allows you to access a wealth of technologies, including Satellite Navigation.⁽⁴⁾ Once in motion, sports tuned suspension with firmer spring and shock absorber settings ensures reduced body roll during cornering, while performance dampers front and rear ensure added comfort and control.

ENHANCEMENT PACK 1

- Moonroof

ENHANCEMENT PACK 2

- Moonroof
- Smart Entry Key Card
- 13-speaker Mark Levinson® Audio
- Pre-Collision Safety System (PCS)
- Radar Active Cruise Control (ACC)



CT 200h F Sport model shown



THE FUTURE OF PERFORMANCE REVEALED

CT 200h HYBRID

Our world is filled with more new ideas than ever before. So when you step into the driver's seat of a vehicle powered by the Lexus Hybrid Drive (LHD), it feels a natural extension of the world we live in today.

Like all good ideas, the Lexus Hybrid Drive started with a very simple one. Why not join a petrol engine together with an electric motor? So Lexus engineers started with an energetic petrol engine boosted by a wealth of advanced technologies, then added a high energy electric motor. That's when things got interesting.

If that's how it works, how does it feel?

After warm up, when you're stopped at the lights, there's a relaxing silence, because nothing is running at all. Touch the accelerator gently and the electric motor ushers you quietly along. Keep pushing the accelerator and the petrol engine joins in for greater response. Once you're up to highway speeds, the electric motor relaxes

leaving most of the work to the petrol engine, for blissfully smooth cruising. Upon deceleration, the Hybrid battery is recharged, ready to start the process all over again.

Now consider a cleaner future. The Lexus Hybrid Drive emits a mere 95g/km of CO₂, which is considerably less than a similarly powered petrol engine - less even than a comparable diesel engine.⁽¹⁰⁾ The Continuously Variable Transmission (CVT) ensures there's no shift shock like a conventional transmission and your speed simply increases without gear changes. For something so forward thinking and sophisticated, driving a Lexus Hybrid Drive is delightfully simple and effortless. Isn't that the sort of future we all dreamed about?

[DISCOVER MORE ABOUT LEXUS HYBRID DRIVE](#)

LOCATE A DEALER

HOME

BOOK A TEST DRIVE

PRIVILEGED ENTRY

CT 200h LUXURY

Your CT 200h journey begins with the Luxury model, which comes equipped with an array of standard inclusions. The CT 200h Luxury is distinguished by its stylish 16" alloy wheels, while Daytime Running Lights (DRLs) in the distinctive L-configuration are standard to the range. Most noticeable, as you use Smart Entry to step inside, is the choice of three stylish fabric colours, instilling a soothing look to the interior treatment with a soft touch. A slim 7" screen positioned on the dash displays audio settings, accessed by the Lexus Display Audio (LDA) controller on the centre console. Drive Mode Select tailors vehicle responses and interior ambience to suit your mood.

ENHANCEMENT PACK 1

- Leather Accented Interior
- Heated Front Seats
- 17" Alloy Wheels
- Front Fog Lights

ENHANCEMENT PACK 2

- Leather Accented Interior
- Heated Front Seats
- 17" Alloy Wheels
- Front Fog Lights
- Moonroof

ENHANCEMENT PACK 3

- Leather Accented Interior
- Heated Front Seats
- 17" Alloy Wheels
- Front Fog Lights
- Satellite Navigation⁽⁴⁾
- 4.2" Multi Information Display
- Digital Radio with Time Shift
- Enform App Suite
- Self-dimming Interior Mirror
- Pre-Collision Safety System
- Radar Active Cruise Control

ENHANCEMENT PACK 4

- Leather Accented Interior
- Heated Front Seats
- 17" Alloy Wheels
- Front Fog Lights
- Satellite Navigation⁽⁴⁾
- 4.2" Multi Information Display
- Digital Radio with Time Shift
- Enform App Suite
- Self-dimming Interior Mirror
- Moonroof
- Pre-Collision Safety System
- Radar Active Cruise Control

Overseas CT 200h Luxury model with Enhancement Pack 1 shown

REFINEMENT REDEFINED

CT 200h SPORTS LUXURY

On the outside, Sports Luxury models are distinguished by LED headlights and 17" wheels. Then, as your slim Smart Entry Key Card ushers you inside, the leather accented interior complemented by a Shimamoku woodgrain-look embellishment provides a warm welcome. Assuming your bespoke seating position is as simple as touching the right switches on the 10-way power adjusted driver's seat, then

later recalling your key settings from the driver's memory switch. A Mark Levinson® 13-speaker audio system surrounds you with pristine, digitally cleansed sound. With so many luxuries included as standard, there was little room for options. So all you have left to decide is which of the three interior design treatments and 10 exterior colours you prefer to uniquely personalise your CT 200h Sports Luxury.

Lexus Australia reserves the right to vary and discontinue the current interior and exterior colours, trims and colour/trim/model combinations. Colours and trims displayed here are a guide only and may vary from actual colours due to printing/display process. See your Lexus dealer to confirm colour/trim/model availability when ordering your vehicle.



A COLOUR PALETTE THAT ADDS PANACHE

EXTERIOR COLOURS

Lexus designers are mindful of the way colour has the ability to reshape design. Some colours impart excitement, others soothe. Yet beyond pure colour, complex paint finishes have been developed which accentuate design, achieving some stunning effects across a complete spectrum of lighting conditions.

In Mercury Grey, tiny particles of mica below the surface of the paint have the ability to capture the sun's rays and create a dazzling effect, similar to the way highly polished metal emits a rich sheen in direct sunlight.

Certain metallic finishes like Titanium and Deep Metallic Bronze employ metallic particles which are embedded deep within the paint coating to capture the light and emit a rich lustre. A finish called 'Caliente' has also entered the colour spectrum, capable of firing up the emotions with its rich red hues.

The CT 200h F Sport has a colour treatment that is quite over the top. A contrasting black roof enhances the vehicle's sporting personality and provides an added dimension to the seductive L-finesse body design.

Lexus Australia reserves the right to vary and discontinue the current interior and exterior colours, trims and colour/trim/model combinations. Colours and trims displayed here are a guide only and may vary from actual colours due to printing/display process. See your Lexus dealer to confirm colour/trim/model availability when ordering your vehicle. Metallic/mica pearlescent paint is optional and subject to additional charges on most models.

^ Premium paint featured is an optional extra



Titanium[^] 1J7
CT 200h Sports Luxury model shown



Sonic Quartz[^] 085
CT 200h Sports Luxury model shown



White Nova[^] with Black roof - F Sport only 2LJ
CT 200h F Sport model shown



Titanium[^] with Black roof - F Sport only 2MN
CT 200h F Sport model shown



Mercury Grey[^] 1H9
CT 200h Sports Luxury model shown



Onyx 212
CT 200h Sports Luxury model shown



Mercury Grey[^] with Black roof - F Sport only 2LL
CT 200h F Sport model shown



Sparkling Meteor[^] with Black roof - F Sport only 2PX
CT 200h F Sport model shown



Graphite Black[^] 223
CT 200h Sports Luxury model shown



Deep Metallic Bronze[^] 4X2
CT 200h Sports Luxury model shown



Caliente with Black roof - F Sport only 2LN
CT 200h F Sport model shown



Vermillion[^] with Black roof - F Sport only 2LM
CT 200h F Sport model shown



Caliente 3T2
CT 200h Sports Luxury model shown



Vermillion[^] 3R1
CT 200h Sports Luxury model shown



Deep Blue[^] with Black roof - F Sport only 2PK
CT 200h F Sport model shown



Sparkling Meteor[^] 8X9
CT 200h Sports Luxury model shown



Deep Blue[^] 8X5
CT 200h Sports Luxury model shown

MATERIAL WEALTH

INTERIOR TRIMS

Style emanates from the careful choice of the finest materials, as much as from the design and layout. Lexus interior designers have created a selection of interior treatments for the CT 200h resulting in three unique personalities for the Luxury models, three for Sports Luxury models and two exciting treatments for the F Sport.

Some may prefer the tactile softness of the fabric trim lavished on Luxury models, with a choice of Black, Ivory Splash and Kaleidoscope Red, punctuated by Black mouldings across the dash, door trims and console.

F Sport is distinguished by a leather accented interior, finished in a choice of F Sport Dark Rose or F Sport Black, an effect offset by Wedge Metal ornamentation.

The look of opulence in Sports Luxury models is the result of a leather accented interior finished in your choice of Topaz, Ivory or Black. To complement such a look, an accent has been crafted from Shimamoku woodgrain-look, with its wide grain and high lustre.

Beyond the choice of materials and metals are the tactile nuances which complement the feeling of luxury. Soft upholstery has been added to the armrests, imparting a soft caress close to your skin for added comfort. Two-tone door ornamentation provides added dimension to the contoured door trims.

Lexus Australia reserves the right to vary and discontinue the current interior and exterior colours, trims and colour/trim/model combinations. Colours and trims displayed here are a guide only and may vary from actual colours due to printing/display process. See your Lexus dealer to confirm colour/trim/model availability when ordering your vehicle.



Black trim with Black ornamentation
CT 200h Luxury model shown



Kaleidoscope Red trim with Black ornamentation
CT 200h Luxury model shown



Ivory Splash trim with Black ornamentation
CT 200h Luxury model shown



Black trim with Shimamoku ornamentation
CT 200h Sports Luxury model shown



Topaz trim with Shimamoku ornamentation
CT 200h Sports Luxury model shown



Ivory trim with Shimamoku ornamentation
CT 200h Sports Luxury model shown



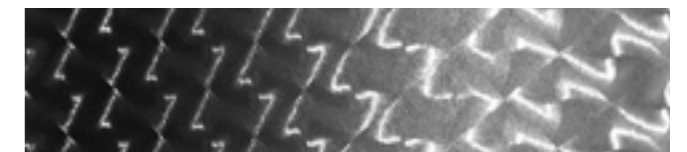
F Sport Black trim with Wedge Metal ornamentation
CT 200h F Sport model shown



F Sport Dark Rose trim with Wedge Metal ornamentation
CT 200h F Sport model shown



Shimamoku



Wedge Metal

CT 200h GENERAL SPECIFICATIONS

	LUXURY	F SPORT	SPORTS LUXURY
EXTERIOR ⁽¹⁴⁾	Length (mm)	4320	4320
	Width (mm) - mirrors folded in	1765	1765
	Height (mm) - without moonroof	1440	1440
	Wheelbase (mm)	2600	2600
	Running Clearance (mm)	140	140
	WEIGHTS AND CAPACITIES	Kerb Weight (kg) ⁽¹¹⁾	1410-1465
Gross Vehicle Mass (kg) ⁽¹²⁾		1845	1845
Seating Capacity		5	5
Luggage Capacity (L)		375	375
Fuel Tank Capacity (L)		45	45
BODY		Body Construction	Monocoque
	Body Type	5-door Hatch	5-door Hatch
ENGINE	Engine Type	Petrol Electric Hybrid	Petrol Electric Hybrid
	Engine Capacity (cc)	1798	1798
	Engine Code Name	2ZR-FXE	2ZR-FXE
	Engine Description	Atkinson Cycle Inline 4-cylinder	Atkinson Cycle Inline 4-cylinder
ELECTRIC MOTOR	Type	Permanent Magnet Synchronous	Permanent Magnet Synchronous
	Maximum System Voltage	650	650
POWER AND TORQUE	Maximum Power (combined)	100kW	100kW
	Maximum Torque (electric)	207Nm	207Nm
	Maximum Torque (petrol)	142Nm @ 2800-4400rpm	142Nm @ 2800-4400rpm
	Fuel Economy (combined) (L/100km) ⁽¹³⁾	4.1	4.1
	Carbon Dioxide (combined g/km) ⁽¹⁰⁾	95	95
HYBRID SYSTEM	Type	Series/Parallel	Series/Parallel
HIGH VOLTAGE BATTERY	Type	Nickel-Metal hydride (Ni-MH)	Nickel-Metal hydride (Ni-MH)
	Nominal Voltage	201.6	201.6
DRIVETRAIN	Type	Lexus Hybrid Drive	Lexus Hybrid Drive
	Driven Wheels	Front	Front
	Transmission Description	Electronic Continuously Variable Transmission	Electronic Continuously Variable Transmission
STEERING	Type	Rack and Pinion	Rack and Pinion
	Operation	Electric Power-assisted Steering (EPS)	Electric Power-assisted Steering (EPS)
	Turning Circle at tyre (kerb to kerb m)	10.4	10.4
	Gear Ratio	14.6	14.6
BRAKES	Front	Ventilated Discs	Ventilated Discs
	Rear	Solid Discs	Solid Discs
	Regenerative Braking System	•	•
	Anti-lock Braking System (ABS)	•	•
	Electronic Brakeforce Distribution (EBD)	•	•
	Traction Control (TRC)	•	•
	Vehicle Stability Control (VSC)	•	•
SUSPENSION	Front	MacPherson strut	MacPherson strut
	Rear	Double wishbone	Double wishbone
	Sport Suspension Tuning	-	-
TYRES AND RIMS	Front/Rear Tyre Size	205/55 R16	215/45 R17
	Front/Rear Rim Size (ins)	16x6	17x7
	Rim Type	Alloy	Shadow Chrome Alloy

CT 200h ADVANCED FEATURES

	LUXURY	F SPORT	SPORTS LUXURY
Pre-Collision Safety System (PCS) with Pre-Collision Braking (PCB)	EP3, EP4	EP2	•
Radar Active Cruise Control (ACC)	EP3, E&P4	EP2	•
Hill-start Assist Control (HAC)	•	•	•
Lexus Remote Touch Controller (LRT)	•	•	•
Driver's 10-way Power Seat with Three Memory Settings	-	•	•
Eight Supplemental Restraint System (SRS) Airbags	•	•	•
Reversing Camera	•	•	•
Reversing Camera (RVC) with Rear Guide Assist (RGA)	EP3, EP4	•	•
Dual-zone Climate Control Air Conditioning	•	•	•
Performance Body Dampers	-	•	•
Drive Mode Linked Mood Lighting	•	•	•
Switchable Hybrid System Indicator/Tachometer	•	•	•
Clearance and Reversing Sonars	-	•	•
Smart Entry Key Card	-	EP2	•
Push Button Start	•	•	•
Fabric Interior	•	-	-
Leather Accented Interior	EP1, EP2, EP3, EP4	•	•
Heated Front Seats	EP1, EP2, EP3, EP4	•	•
Tilt & Slide Moonroof	EP2, EP4	EP1, EP2	•
Satellite Navigation ⁽⁹⁾ System with SUNA Live Traffic Alerts	EP3, EP4	•	•
Multi Information Display (MID)	•	•	•
Bluetooth ⁽⁸⁾ Mobile Phone Connectivity	•	•	•
Emergency Flashing Brake Lights	•	•	•
Rain-dispersing & Heated Exterior Mirrors	•	•	•
Self-dimming Interior Mirror	EP3, EP4	•	•
Digital Radio with Time Shift	EP3, EP4	•	•
10-speaker Audio Including Subwoofer & Amp	•	•	-
13-speaker Mark Levinson [®] Audio	-	EP2	•
Rear & Rear-Side Privacy Glass	-	•	•
16" Alloy Wheels	•	-	-
17" Alloy Wheels	EP1, EP2, EP3, EP4	•	•
Rear Spoiler	•	•	•
LED Daytime Running Lights (DRLs)	•	•	•
Rain Sensing Wipers	•	•	•
LED Low-beam Headlights with Automatic Levelling	-	-	•
LED Front Fog Lights	-	-	•
Halogen Headlights	•	•	-
Enform App Suite	EP3, EP4	•	•
Anti-theft Siren & Intrusion Sensor	-	•	•
CT 200h LUXURY ENHANCEMENT PACKAGES	Enhancement Pack 1: Leather Accented Interior, Heated Front Seats, 17" Alloy Wheels, Front Fog Lights		
	Enhancement Pack 2: Leather Accented Interior, Heated Front Seats, 17" Alloy Wheels, Front Fog Lights, Moonroof		
	Enhancement Pack 3: Leather Accented Interior, Heated Front Seats, Navigation including Rear Guide Assist (RGA), 4.2" Multi Information Display, Digital Radio with Time Shift, 17" Alloy Wheels, Front Fog Lights, Enform Functionality, Self-dimming Interior Mirror, Pre-Collision Safety System (PCS), Radar Active Cruise Control (ACC)		
	Enhancement Pack 4: Leather Accented Interior, Heated Front Seats, Navigation including Rear Guide Assist (RGA), 4.2" Multi Information Display, Digital Radio with Time Shift, 17" Alloy Wheels, Front Fog Lights, Enform Functionality, Self-dimming Interior Mirror, Moonroof, Pre-Collision Safety System (PCS), Radar Active Cruise Control (ACC)		
CT 200h F SPORT ENHANCEMENT PACKAGES	Enhancement Pack 1: Moonroof		
	Enhancement Pack 2: Moonroof, Smart Entry Key Card, 13-speaker Mark Levinson [®] Audio System, Pre-Collision Safety System (PCS), Radar Active Cruise Control (ACC)		

EP = Enhancement Pack

LEXUS OWNERSHIP SOLUTIONS

LEXUS OWNERSHIP SOLUTIONS ALLOWS YOU TO DETERMINE YOUR FINANCE COSTS AND KNOW THE GUARANTEED FUTURE VALUE (GFV)* OF YOUR VEHICLE FROM THE OUTSET. IT OFFERS YOU CHOICE, CONTROL AND CERTAINTY. IN SHORT, EVERYTHING YOU'D EXPECT FROM LEXUS.

How does Lexus Ownership Solutions work?

- You choose the deposit that best fits your needs.
- You choose your term.**
- We agree on the estimated kilometres you think the vehicle will have travelled at the end of the term (the End Odometer). The End Odometer will also include any kilometres already on the vehicle.
- Lexus Financial Services (LFS) then determines the GFV of your vehicle and calculates your monthly repayments with a final payment equal to the GFV. The GFV is the minimum value of your Lexus at the end of your finance contract. So, if you return your Lexus at the end of the term, LFS will pay you the GFV which will be put against the final payment (subject to fair wear and tear conditions and agreed kilometres being met).

The end of the term? Simply replace, retain or return.

At the end of your term you can choose to:

- Replace or sell your Lexus using the trade-in value or sale price to pay the remaining balance of your account.
- Retain your Lexus and simply pay the remaining balance of your account (including final payment).
- Alternatively, return your Lexus and, subject to fair wear and tear conditions and the agreed kilometres being met, we'll put the GFV towards the final payment on your account.

Choosing your deposit – what is best for you?

With the flexibility of Lexus Ownership Solutions, you can choose the deposit that best fits your current needs.

- If, for example, you have funds tied up in other investments, you can choose to finance your new Lexus with a zero deposit.††
- Alternatively, by using a larger deposit, you can lower your monthly repayments.
- Better still, compared to other finance options over a similar term, Lexus Ownership Solutions can provide lower monthly repayments.***

Want more certainty?

With Lexus Ownership Solutions, you've got the reassurance that at the end of the term (subject to fair wear and tear and agreed kilometres being met) you'll never owe more than your vehicle's worth to LFS. In other words, you don't have to worry about what your vehicle will be worth in the future because you know its minimum value from the outset.*

What happens in the case of the unexpected?

If your vehicle incurs damage and does not meet the Fair Wear and Tear guidelines, LFS will give you the opportunity to have your vehicle repaired. Otherwise, LFS can organise the repairs and deduct the cost from your GFV. This adjusted GFV will then be the price that LFS will offer you if you return the vehicle at the end of your term. Of course, if you retain the vehicle, the condition doesn't matter, however, if you replace it or sell it privately, the condition will obviously impact your sale price.

So what does your accountant think?

Naturally, we think Lexus Ownership Solutions is an excellent, innovative way to put you in control of buying a new Lexus. That said, we suggest you seek independent advice to ensure Lexus Ownership Solutions is right for you.

Wouldn't it be great if Lexus Ownership Solutions was just the beginning?

Lexus' innovations and commitment to customer service extend well beyond Lexus Ownership Solutions. Once you purchase a new Lexus, you'll become a member of the Lexus Encore Privileges Programme and enjoy a host of exclusive benefits.†

For further details, simply visit your nearest Lexus dealer or see lexus.com.au/services/benefits/

* The Guaranteed Future Value (GFV) is the minimum value of your new or approved demonstrator Lexus at the end of your finance contract, as determined by Lexus Financial Services (LFS). If you decide to return your car to Lexus at the end of your term, LFS will pay you the agreed GFV which will be put against your final payment, subject to fair wear and tear conditions and agreed kilometres being met. The information provided is general in nature. You should seek your own financial advice to determine whether Lexus Ownership Solutions is appropriate for your individual circumstances. Terms, conditions, fees and charges apply. Lexus Ownership Solutions GFV products are available to approved customers of Lexus Financial Services, a division of Toyota Finance Australia Limited ABN 48 002 435 181, AFSL and Australian Credit Licence 392536.

** Up to four years.

*** Lower monthly repayments compared to similar term with no Guaranteed Future Value (GFV) or equivalent balloon final payment. Total interest charges will be higher if a GFV or balloon final payment is selected.

† Terms and Conditions apply.

†† Approved applicants only. Terms and conditions apply. A deposit may be required for capacity reasons.

THE BENEFITS OF ENCORE

THE BENEFITS OF BEING A LEXUS OWNER GO FAR BEYOND THE INTRINSIC PLEASURE OF DRIVING THE VEHICLE. FROM THE MOMENT YOU'RE HANDED THE KEYS, YOU'LL ALSO BE WELCOMED TO THE LEXUS ENCORE PRIVILEGES PROGRAMME† - A RANGE OF EXCLUSIVE INITIATIVES THAT REAFFIRM OUR ONGOING PURSUIT OF PERFECTION.

It all means you'll enter a world of benefits that extends to every corner of life. A world where everything's just that much easier and works that much more seamlessly. And a world where, should trouble ever find you, you can always find a helping hand.

Take our After Sales Service as an example. Both our technology and our technicians are at the forefront of automotive innovation. And our profound understanding of every single component of your Lexus means we can do more to ensure it's a pleasure to drive today, and in the long run. It's a world you've always belonged in. A privilege unique to Lexus drivers.

Silver service

Every aspect of your Lexus is built around your comfort and convenience, so it's fitting that when it's ready for a service, we'll come and pick it up from you and provide you with a complimentary loan car while we're inspecting. Plus, when we return your Lexus, it will have received a complimentary wash and interior vacuum.

Experience Lexus outside your vehicle

We're constantly striving to enhance the Lexus ownership experience. It's what we're known for. Our luxury events will be the perfect way to experience the Lexus lifestyle and network with other owners. Tickets may be limited, so be quick to secure your place.

Peace of mind

Wherever you are and whatever you're doing, you can relax, because with our Encore Privileges Programme, you have the 24-hour support of Lexus DriveCare.* We'll look after your car and, just as importantly, we'll look after you and your passengers.

See lexus.com.au/services/benefits/ for details.

† Terms and Conditions apply.

* Full DriveCare details and conditions are available at lexus.com.au/services/benefits/ or you can phone 1800 253 987. Lexus Australia reserves the right to change, without notice, any benefits specified. Benefits should be confirmed at the time of ordering with your authorised Lexus dealer. To the extent permitted by law, Lexus Australia will not be liable for any damage, loss or expense incurred in relation to the benefits specified above (whether by way of negligence or otherwise). Lexus Australia, a division of Toyota Motor Corporation Australia Limited ABN 64 009 686 097, 155 Bertie St, Port Melbourne Vic 3207.

FIND OUT MORE



New Vehicle Warranty expires four years from date of first delivery or 100,000kms, whichever occurs first. Refer to the Warranty conditions. The New Vehicle Warranty does not limit and may not necessarily exceed your rights under the Competition and Consumer Act 2010.

The HV (Hybrid) Battery Warranty expires eight years from date of first delivery or 160,000kms, whichever occurs first. The Warranty is comprised of the four year Lexus New Vehicle Warranty and an additional four year Lexus Australia Hybrid (HV) Battery Warranty. Refer to the Warranty conditions. The Warranty does not limit and may not necessarily exceed your rights under the Competition and Consumer Act 2010.

- (1) Enform is available on certain vehicle models and grades only. Enform services rely on data from the driver's compatible mobile phone and information provided by third parties. Availability is dependent on a number of factors, including the availability of third party information, mobile service, sufficient mobile data allowance and GPS satellite signal reception. Mobile usage is at the user's cost. Lexus Australia reserves the right to add, remove or modify applications. Further information is provided at lexus.com.au/enform
- (2) Not all devices will be compatible and functionality will vary depending on the device. Details of compatible smartphones can be found at lexus.com.au/enform/devices. Lexus reserves the right to amend the list of compatible smartphones at any time. Contact your Lexus dealer for details.
- (3) The Bluetooth® word mark is owned by Bluetooth SIG, Inc. Not all devices are compatible and functionality varies depending on the device.
- (4) Current navigation mapping database encompasses major capital and primary national road networks, as well as offering some coverage in regional areas. Satellite Navigation is fitted as standard on F Sport and Sports Luxury models, and available in Luxury models with Enhancement Packs 3 and 4.
- (5) Destination Download and Local Search operate from information provided by Google Places and may not be accurate to cover all areas. Navigation is available in certain vehicle models and grades only.
- (6) Fuel Finder is typically updated twice daily and may not be accurate. Some areas, fuel types and fuel providers may not be covered by Fuel Finder.
- (7) Digital radio station coverage dependent on vehicle location.
- (8) Reversing Camera (RVC)/Reversing Camera (RVC) with Rear Guide Assist (RGA)/Clearance and Reversing Sonars/Hill-start Assist Control (HAC) are driver assist devices only and should not be used as a substitute for safe driving practices. The area into which the vehicle is driven must be visually monitored by the driver.
- (9) Pre-Collision Safety System (PCS) and Radar Active Cruise Control (ACC) are driver assist technologies and should not be used as a substitute for safe driving practices. The area into which the vehicle is driven must be visually monitored by the driver.
- (10) Emissions vary depending on driving conditions/style, vehicle conditions and options/accessories.
- (11) Kerb, tare and payload weights are nominal and will vary depending on options and accessories.
- (12) Gross Vehicle Mass (GVM) is the total permissible combined weight of the vehicle, including occupants, fuel and cargo.
- (13) Fuel consumption varies depending on driving conditions/style, vehicle conditions and options/accessories. Source of fuel consumption data: ADR81/02 combined (L/100km) for auto models.
- (14) Some vehicle dimension figures are approximate and may vary due to options and accessory fitment.

IMPORTANT NOTICE – please read: Lexus Australia uses its best endeavours to ensure this material is correct when published. You must check with your authorised Lexus dealer when ordering to ensure the vehicle with your chosen specifications, equipment and colour is available and that the vehicle can be delivered within the timeframe suitable to you. When ordering accessories, you must check with your authorised Lexus dealer to ensure the accessory's design, features and colours are available and will fit your vehicle. Please also consider the mass of your load to ensure you will not exceed the maximum allowable individual axle capacity, Gross Vehicle Mass and/or Gross Combined Mass of the vehicle. Refer to lexus.com.au for further details. Colours displayed here are a guide only and may vary from actual colours due to printing/display processes. Certain accessories when fitted will require the removal of standard equipment. Standard equipment may be retained by Lexus Australia. Lexus Australia reserves the right to change, without notice, at any time prices, colours, materials, equipment, specifications and discontinue colours/models. To the extent permitted by law, Lexus Australia will not be liable for any damage, loss or expense incurred as a result of reliance on this material in any way. Distributed nationally by Lexus Australia ABN 64 009 686 097, 155 Bertie St, Port Melbourne Vic. 3207. PROOF HQ: L2016-000459. PRINTED: JULY 2016. LEX0764.



THIS BOOK IS PRINTED ON GREEN PAPER

The Lexus book you are reading has been produced using HannoArt Satin. A premium coated paper representing a level of craftsmanship that is without peer. This environmentally responsible paper is manufactured using low environmental impact FSC® certified pulp and is certified carbon neutral by The Carbon Reduction Institute. ^ Sappi, the manufacturers of HannoArt, place high importance on delivering an environmental and sustainable operation. They operate under world's best practice ISO 14001 EMS and EMAS certification and eliminate harmful by-products by using Totally Chlorine Free (TCF) pulp. HannoArt is archival, so like our vehicles it's made to stand the test of time.

As a company that strives to lessen its impact on the environment in every way possible, Lexus believes that choosing our paper wisely is one more step we can take in preserving our planet.

^Calculations encompass carbon emissions from seedling to printer. For full details please visit kwdoggett.com.au
To learn more about the CT Line contact your Lexus Dealer on 1800 023 009 or visit lexus.com.au

