

Mazda2 Specifications



Features

	Neo	Maxx	Genki
Transmission			
5-speed manual	✓	✓	✓
4-speed Activematic	opt	opt	opt
Exterior			
Steel wheels with full wheel covers	✓	-	-
Alloy wheels	-	✓	✓
Body kit including front spoiler, rear bumper skirt and side skirts	-	-	✓
Rear roof spoiler	-	✓	✓
Black manual exterior mirrors	✓	-	-
Body coloured power mirrors	opt 1	✓	-
Body coloured power mirrors (folding)	-	-	✓
Body coloured door handles	-	✓	✓
Power windows	opt 1	✓	✓
Side protection mouldings	opt 1	-	-
Body coloured side protection mouldings	-	✓	✓
Body coloured front and rear bumpers	✓	✓	✓
Front and rear mudflaps	opt 1	✓	-
Tinted windscreen, side and rear windows	✓	✓	✓
Front centre roof mounted aerial	✓	✓	✓
Instrumentation			
Tachometer temperature gauge and electronic odometer	✓	✓	✓
Low fuel warning light	✓	✓	✓
Automatic transmission indicator in instrument cluster	✓	✓	✓
Digital clock	✓	✓	✓
Critical function warning lights/chimes	✓	✓	✓
Lights			
Halogen headlights	✓	✓	✓
Front fog lamps	-	-	✓
Illuminated entry system with delayed fade	✓	✓	✓
Interior dome lamp	✓	✓	✓
Cargo room lamp	✓	✓	✓
Lights-left-on sound warning	✓	✓	✓
Instrument panel light dimmer	✓	✓	✓

	Neo	Maxx	Genki
Interior			
Air conditioning	✓	✓	✓
AM/FM digital tuner and CD player with 2 speakers	✓	-	-
AM/FM digital tuner and CD player with 4 speakers	opt 1	-	-
AM/FM digital tuner and in-dash, 6-disc CD player with 4 speakers	-	✓	✓
Steering wheel with audio control switches	-	✓	✓
Upper grade cloth seat trim	-	✓	✓
Front seats with: rake and slide adjustment	✓	✓	✓
adjustable head restraints	✓	✓	✓
driver's seat height adjustment	-	✓	✓
full recline function	✓	✓	✓
passenger's side seat back pocket	✓	✓	✓
Rear seats with: slide adjustment	✓	✓	✓
adjustable head restraints	✓	✓	✓
50/50 split fold backrest	✓	✓	✓
full recline function	✓	✓	✓
double-fold function	✓	✓	✓
Driver's and passenger's vanity mirror	✓	✓	✓
Front and rear passenger assist grips	✓	✓	✓
Front door map pockets	✓	✓	✓
Upper dash storage tray with lid	✓	✓	✓
Glove box and multi-purpose box incorporating a washable lining	✓	✓	✓
Tilt adjustable steering wheel	✓	✓	✓
Front 2-speed wipers with intermittent function	✓	✓	✓
Rear wiper with intermittent function	✓	✓	✓
Rear window demister	✓	✓	✓
Interior release for fuel filler lid	✓	✓	✓
Retractable cargo area cover	opt 1	✓	✓
Ashtray and cigarette lighter	✓	✓	✓
Driver's left footrest	✓	✓	✓
Cupholders	✓	✓	✓

For further information visit mazda2.com.au or Freecall 1800 034 411. opt 1 – Power Pack option (Neo). opt 2 – Safety Pack option (Neo) must be combined with opt 1. opt 3 – Safety Pack option (Maxx).

Specifications

	Neo	Maxx	Genki
Safety and Theft Prevention			
Anti-lock Braking System (ABS) with EBD and Brake Assist	opt 2	opt 3	✓
Front SRS airbags (driver and passenger)	✓	✓	✓
Side SRS airbags (front)	opt 2	opt 3	✓
Curtain SRS airbags (front and rear)	opt 2	opt 3	✓
Front seat-belts with pre-tensioners, load-limiters and height adjustable shoulder anchorages	✓	✓	✓
Rear centre seat 3-point seat-belt	✓	✓	✓
Collapsible steering column	✓	✓	✓
Whiplash-minimising front seats	✓	✓	✓
Intrusion-minimising brake pedal	✓	✓	✓
Day/night rear vision mirror	✓	✓	✓
Driver's power window – one touch (up and down)	opt 1	✓	✓
Central locking	✓	-	-
Remote central locking (2 transmitters with retractable key)	-	✓	✓
Engine immobiliser	✓	✓	✓
Child restraint anchor points and childproof rear door locks	✓	✓	✓
High mount stop lamp	✓	✓	✓
Side impact door beams	✓	✓	✓
'Triple H' safety construction with front and rear crumple zones	✓	✓	✓

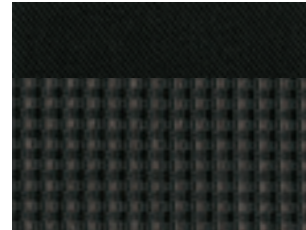
Specifications

Engine	1.5 litre 4 cylinder in-line 16V DOHC with Sequential Valve Timing (S-VT)		
Engine capacity	cc	1,498	
Bore and stroke	mm	78.0 x 78.2	
Compression ratio		10.0 : 1	
Maximum power (DIN)	kW	82 @ 6,000rpm	
Maximum torque (DIN)	Nm	141 @ 4,000rpm	
Fuel system	Electronic fuel injection		
Fuel tank capacity	litres	45	
Fuel consumption	man (combined)*	l/100km	6.6
	auto (combined)*	l/100km	7.0
Recommended fuel	Unleaded		

	Neo	Maxx	Genki
Transmission Ratios			
1st man/auto	3.416 / 2.816		
2nd	1.842 / 1.553		
3rd	1.290 / 1.000		
4th	0.972 / 0.695		
5th	0.775 / -		
Reverse	3.214 / 2.279		
Final drive	4.105 / 4.147		
Chassis and Suspension			
Brakes	front	Ventilated disc	
	rear	Drum	
Suspension	front	Strut coil double acting shock absorbers and torsion bar	
	rear	Torsion beam axle and double acting shock absorbers	
Steering	Electro hydraulic power assisted (engine revolution sensing) rack & pinion		
Turning circle	kerb to kerb	m	9.8
Tyres	175/65R14	185/55R15	185/55R15
Wheels	14 x 6.0 J (Steel)	15 x 6.0 J (Alloy)	15-x 6.0 J (Alloy)
Spare tyre/wheel	Temporary		
Dimensions			
Overall length		mm	3,926
Overall width		mm	1,680
Overall height		mm	1,540
Wheelbase		mm	2,492
Track	front	mm	1,472
	rear	mm	1,450
Kerb weight	man	kg	1,064-1,067
	auto	kg	1,087-1,090
			1,087-1,090
			1,075
			1,098

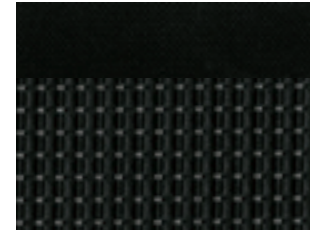
Mazda2 colours

Neo Interior



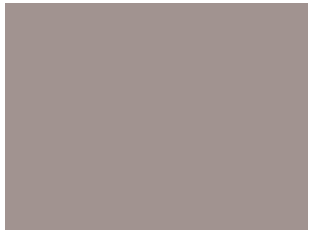
Dark Grey

Maxx & Genki Interior



Black

Exterior



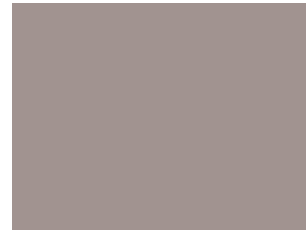
Arctic White



Brilliant Black



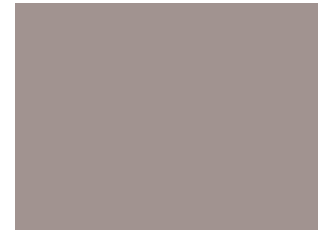
Carbon Grey



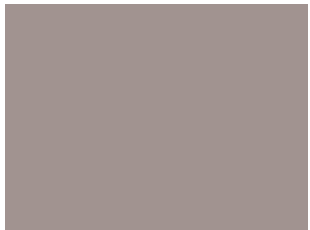
Sunlight Silver



Strato Blue



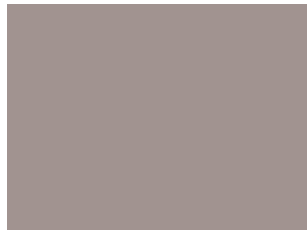
Mocha



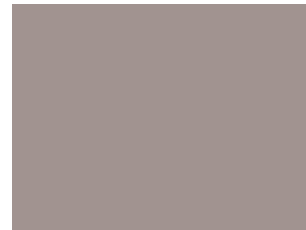
Iris Blue



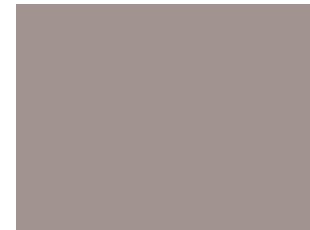
Blazing Yellow
(Genki only)



Classic Red



Winning Blue



Platinum Silver

Mazda2 at a glance



Neo

With its great handling, spacious interior and all the right gear, Neo is fun from the word go. And go it does, thanks to the zippy 1.5 litre S-VT engine.

- 1.5 litre 4 cylinder 16 valve DOHC with S-VT
- 5-speed manual
- 4-speed Activematic (optional)
- Air-conditioning
- AM/FM digital tuner
- Single disc CD player
- Tilt adjustable steering wheel
- Central locking
- Front SRS airbags
- Front seat belts with pre-tensioners, load limiters & height adjustable shoulder anchorages
- Safety Pack (optional)
- Power Pack (optional)



Maxx

If you like your Zoom-Zoom with extra creature comforts, check out Maxx. From the alloy wheels to the smart interior, it's all about maximising your driving enjoyment.

- 1.5 litre 4 cylinder 16 valve DOHC with S-VT
- 5-speed manual
- 4-speed Activematic (optional)
- Air-conditioning
- AM/FM digital tuner
- In-dash, 6-disc CD player with 4 speakers
- Steering wheel with audio control switches
- Tilt adjustable steering wheel
- Remote central locking with retractable key
- Front SRS airbags
- Front seat belts with pre-tensioners, load limiters & height adjustable shoulder anchorages
- Upper grade cloth seat trim
- Power windows
- Power mirrors
- 15 inch alloy wheels
- Rear roof spoiler
- Safety Pack (optional)



Genki

It's fully dressed and ready to play. Genki has the style, the creature comforts and all the safety features.

- 1.5 litre 4 cylinder 16 valve DOHC with S-VT
- 5-speed manual
- 4-speed Activematic (optional)
- Air-conditioning
- AM/FM digital tuner
- In-dash, 6-disc CD player with 4 speakers
- Steering wheel with audio control switches
- Tilt adjustable steering wheel
- Remote central locking with retractable key
- Front SRS airbags
- Side SRS airbags (front)
- Curtain SRS airbags (front and rear)
- Front seat belts with pre-tensioners, load limiters & height adjustable shoulder anchorages
- Upper grade cloth seat trim
- Power windows
- Folding power mirrors
- 15 inch alloy wheels
- Front fog lamps
- Body kit including front spoiler, rear bumper skirt & side skirts
- Rear roof spoiler

mazda.com.au

ZOOM-ZOOM

