

TRITON 4X4



LOVE THAT CAR



The hardworking Triton inherits the 4WD-handling heritage from a long line of Mitsubishi rally champions. GLX models incorporate an Easy Select 4WD system that incorporates 2WD High Range for high speed driving comfort, and two transfer modes to deliver superior traction for off road situations; 4WD High Range and 4WD Low Range. When added traction is required off the black top, the free wheeling front differential enables you to shift on-the-fly (at speeds of up to 100km/h) from 2WD to 4WD High Range mode. And Easy Select 4WD also offers a 4WD Low Range mode for conquering the roughest terrain.

Triton GLX-R offers the superior Super Select 4WD System which offers full time 4WD with the option of four driving modes. This system also offers the benefits of on-the-fly shifts from 2WD to 4WD high range at speeds of up to 100km/h.



2H (2WD HIGH RANGE)

Whether you're cruising down the highway or just going across town, 2H mode shifts you into rear-wheel drive for smooth, quiet, fuel-efficient performance.



4H (FULL-TIME 4WD)

When the weather turns bad and the road gets rough, get added traction in 4H mode. This has the flexibility of a centre-differential with viscous coupling unit, providing excellent traction in unpredictable road conditions or on volatile surfaces.



4HLC (4WD HIGH RANGE W/ LOCKED CENTRE DIFFERENTIAL)

Keeping you on track in rugged or slippery conditions, 4HLC distributes power equally to all four wheels to meet off-road challenges with a steady sense of control.



4LLC (4WD LOW RANGE W/ LOCKED CENTRE DIFFERENTIAL)

Switch to 4LLC when you need all the tractor-like crawling power your Mitsubishi 4WD is capable of. Maximised low-end torque pulls you through even the roughest terrain, stickiest mud and deepest snow.

The Mitsubishi Triton has everything you need to get the tough jobs done. This dependable, Aussie workhorse feels at home anywhere you are – on a building site or around town.

The Triton Double Cab's long bed provides plenty of space for your carrying needs. The pick-up models have a huge 1505mm in length and 460mm in height so you can load those bulky items in with no problems. The cargo bed has double-walled support structures to ensure long-term performance. Whether for work or play, Triton's cargo bed hauls loads with ease. Inner hooks let you tie down your gear securely while the single handle in the rear gate gives you easier access when your hands are full.

To provide essential protection in the event of a frontal collision, every Triton is fitted with driver and front passenger SRS airbags, while double cab models have side and curtain airbags as standard. The front seatbelt system includes pretensioners and force limiters that combine to minimise the potential for serious injury in the event of an accident.



RISE BODY

At the heart of any integrated safety system is outstanding design. Mitsubishi's Reinforced Impact Safety Evolution (RISE) body system combines an energy absorbing front section with a strong, rigid occupant cell to provide outstanding passenger protection in the event of an accident. The RISE body is coupled with a rigid ladder frame, side impact bars and collision absorbing joints.

For more information on the Triton range scan the QR code or visit mitsubishi-motors.com.au



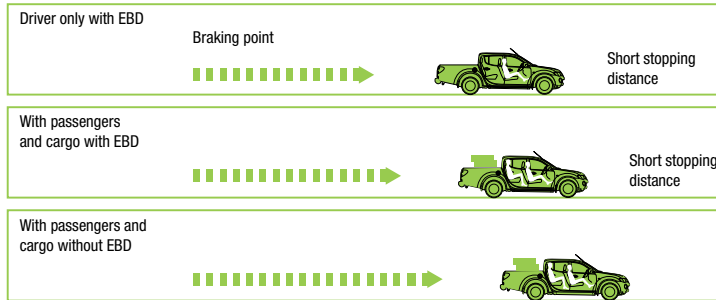
ABS



Anti-lock Braking System

Making driving on slippery roads safer, Triton's intelligent 4-channel, 4-sensor braking system monitors different wheel speeds and activates brakes to individual wheels when required to deliver superior control. This allows you to manoeuvre around objects under heavy braking conditions. 4x4 models feature Multi-Mode ABS which adapts braking forces to ideally suit each driving mode.

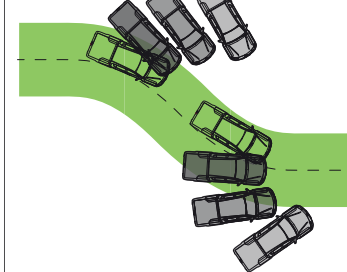
EBD



Electronic Brakeforce Distribution (EBD)

This technology actively monitors different wheel speeds to detect vehicle loads and distributes brake pressure across the front and rear wheels accordingly. Under heavier loads, EBD provides shorter braking distances while enhancing overall control.

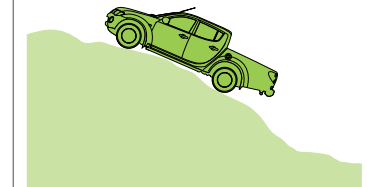
ASC



Active Stability Control

Maintains stability and prevents loss of control when cornering, automatically recognising under-steer and over-steer and applying braking force to the diagonal wheel to keep you online through corners.

ATC



Active Traction Control

Helps you maintain traction on the most slippery or rugged of surfaces. This intelligent system automatically controls the engine output, so driving wheels are prevented from spinning. Sensing loss of traction in an independent wheel, it applies braking force to that wheel and sends extra power and torque to other wheels with traction to keep you moving.



Take on the toughest jobs in comfort

GLX-R Shown

Triton 4WD is available in a range of models and body styles including Cab Chassis, Club Cab and Double Cab. When it comes to grunt and power, the Triton doesn't disappoint. A 2.5 litre Hipower diesel with Variable Geometry Turbo charger (VGT) offers the latest in common rail diesel technology. The VGT allows optimum turbo flowrates to achieve high torque at low speeds and maximize power at high speeds.

The result is excellent emission control, fuel efficiency and high engine power that develops 131kW of power and 400Nm of torque on 5 speed manual and 350Nm of torque on 4 or 5 speed automatic.

With smart, flexible features, the Triton is designed to make your day a breeze. The cabin is ergonomically designed – important when you spend a lot of time behind the wheel. There's plenty of leg, shoulder and headroom in the front and the back of the double cab for transporting your family, mates or workmates with no grumbles.

If you need more room for gear you'd like to carry in the cabin, the Triton Club Cab is the perfect solution. There are a couple of rear seats in case you have the occasional passenger. And they fold down when you don't need them so you can store more gear, securely.

Get the most out of your work day with an in-dash MP3 player compatible audio system, with iPod and USB connectivity. The Mitsubishi link system also allows you to make or receive phone calls hands-free via Bluetooth.

Triton GLX-R also provides you with a multi function display that feeds you information about your driving environment. External temperature, average fuel consumption and range to empty is always handy information.

On the comfort side, Triton has everything covered – air conditioning, power windows and power steering are standard on every model.

All models have easy-to-use cruise control, so you can stay relaxed on the open road, reduce your fuel consumption and avoid the risk of accidental speeding. Simply set your specific speed, relax your hands around the wheel and enjoy the drive.

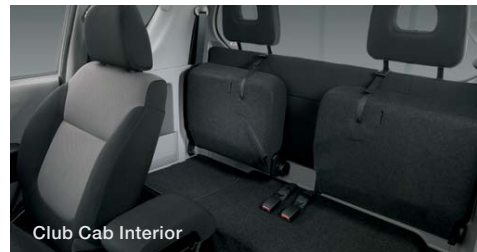
As a fellow worker, Triton's impressive power and torque provides a 3,000kg towing capacity. It's a great companion for farms or worksites. Towing equipment, your dirt bike, trailer, caravan or your boat has never been easier.



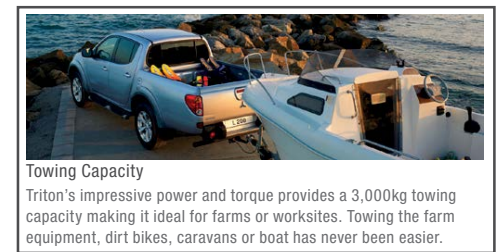
Cruise Control



Power Windows



Club Cab Interior



Towing Capacity
Triton's impressive power and torque provides a 3,000kg towing capacity making it ideal for farms or worksites. Towing the farm equipment, dirt bikes, caravans or boat has never been easier.



GLX SINGLE CAB

Mechanical

2.5L Hi-power common rail direct injection diesel
5 speed manual transmission
East Select 4WD
Power steering
Heavy duty suspension
Engine cover
Engine under cover
Simple tool set & jack
Front recovery point

Cargo

Cab Chassis body style

Exterior

16" x 7" steel wheels
Front mud flaps
Front skid plate
Body coloured bumper bars
Black grille with chrome bars
Body coloured fender flares

Comfort

Air conditioning
Side and rear window demisters
Driver's foot rest
Passenger assist grip
Steering column – tilt adjustable

Convenience

Cruise Control
Steering wheel cruise, audio and phone controls
Room lamp
Door courtesy lamp (all doors)
Cigarette lighter
Ashtray
Power mirrors
Central locking with remote keyless entry
Power windows – with driver auto down function
Front wipers with 2 speeds and variable intermittent
Headlamps "ON" audible warning buzzer
Instrument lamp variable dimming control
Analogue instrumentation includes
– Speedometer with tripmeter, tachometer, fuel and water temperature gauges
Low fuel warning lamp
4WD indicator lamp

¹Bluetooth® connectivity depends on your phone compatibility.

Storage

Glove compartment – illuminated and lockable
Storage pockets in doors (2)
Bottle holders (2)
Centre console storage box

Interior

Vinyl floor covering

Seating

Front sports seats with slide & recline function (driver & passenger) and driver's height adjustment
Seat trim – cloth (dark grey)
Convenience hook

Audio & Media

Bluetooth® 2.0 phone connectivity with voice control and audio streaming
2 speakers
Steering wheel audio buttons
Wide 2 DIN audio system with AM/FM radio/CD/MP3 player

Safety

Anti-lock Braking System (ABS) with Electronic Brakeforce Distribution (EBD)
Driver & passenger SRS airbags
Active Stability Control (ASC)
Active Traction Control (ATC)
Side door impact beams
Child restraint anchorage
Halogen headlamps
Illuminated hazard switch
Driver & front passenger seat belt pretensions
3 point Emergency Locking Retractor (ELR) seatbelts (all seating positions)
Seatbelt warning lamp with timer
Smart Brake (Brake Override System)

Security

Steering lock
Fuel lid cap – key locked (Single Cab only)
Diamond Advantage Roadside Assistance



GLX CLUB CAB

(Features additional to GLX Single Cab)

Cargo

Cab Chassis body style

Convenience

Accessory power socket
Coat hook

Storage

Cup holders

Safety

Front seatbelts height adjustable shoulder anchorages



GLX DOUBLE CAB

(Features additional to GLX Club Cab)

Mechanical

Sports suspension

Exterior

Side steps (platform type)

Comfort & Convenience

Passenger assist grips (3)
Rear centre armrest with cup holders
Carpet floor covering (Automatic Only)



GLX-R DOUBLE CAB

(Features additional to GLX Double Cab)

Mechanical

5 speed Sports Mode auto transmission (optional)
Super Select 4WD

Exterior

17" alloy wheels
Chrome door mirrors with turn indicator and fold control
Wire type gate stopper
Chrome exterior door handles
Fog lamps
Privacy glass
Side steps (tube type)
Roof antenna
Side protection mouldings
Sports bar
Rear step
Honeycomb grille with chrome surround
Tailgate mounted stop lamp

Interior

Passenger side vanity mirror
Leather bound steering wheel
Leather bound gearshift knob
Leather bound 4WD transfer-shift lever
Titanium look instrument panel & surrounds
Carpet floor covering
Chrome interior door handles

Seats

Seat trim – sports cloth (black)

Comfort & Convenience

Automatic air conditioning
Ticket holder (driver side sunvisor)
Map lamps with sunglass pocket
Illuminated ignition key
Rear power window
– with auto up and down function

Audio & Media

Multi function display includes:
– clock with date
– outside temperature
– compass
– barometer
– altimeter
– trip computer with range to empty and average fuel consumption functions
– audio information
6 speakers (including 2 tweeters)

Storage

Bottle holders (4)
Seat back pockets

Safety

Child proof rear door lock
Side and curtain SRS airbags
ISOFIX Child Restraint Anchorages (2)

Seats

Rear seat headrests (3)
Convenience hooks (2)

Audio & Media

4 speakers

Options

– Alloy Wheels

Four only 16x7" alloy wheels and one 16x7" steel wheel (spare)

To see our full range of Triton accessories visit mitsubishi-motors.com.au



Sports Bar (1 Piece)



Driving Lights – Lightforce



Front Protection Bar – Alloy



Weight Distribution Hitch



Canopy – Trade Style



Rubber Mats

TOUGH CHOICES

You can make your Triton even more useful with our range of Genuine Accessories. Ask your Mitsubishi dealer for the complete list today. Mitsubishi Genuine Accessories go through an extensive program of design, development and stringent testing to ensure they meet all applicable government standards as well as Mitsubishi's own rigorous engineering and specifications and performance targets. Using Mitsubishi Genuine Accessories will ensure you get the best quality accessories that are both as durable and reliable as the Mitsubishi you drive.



Side Steps – Alloy



Side Step – Illumination



Flush Look Tonneau Cover



THULE Luggage Pods



Alloy Wheels – Crusader



Weathershield



Front Protection Bar – Alloy – Pedestrian Safe



Tonneau Cover Light with Remote Opening



Mud Flap – Front



Hard Tonneau Cover (3 Piece)



Tub Liner



Utility Box



Side Protection Mouldings



Tub Mat Liner – Rubber



Tilt Up Side Windows (available on Trade & High Line only)



Reversing Mirror/Camera



Outer Scuff Plates – Front



Neoprene Seat Covers



Carpet Mats

Pictures shown for illustration purposes and may not be product specific. Please check with your Mitsubishi dealer for specific model applications.

COLOURS



RED



DARK BLUE (P) (GLX-R ONLY)



WHITE



COOL SILVER (M)



BLACK (P)



IRONBARK (P) (GLX-R ONLY)



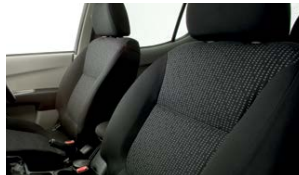
CHARCOAL (M) (GLX-R ONLY)

METALLIC (M) AND PEARLESCENT (P) PAINTS ARE OPTIONAL EXTRAS

Interiors

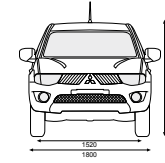
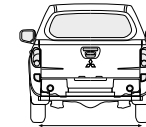
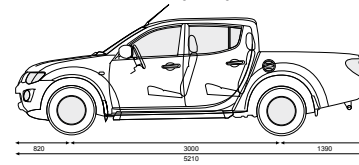


GLX - Cloth



GLX-R - Sports Cloth

Exterior Dimensions (mm)



Key Specifications

		2.5L DOHC CDI			
Engine					
Maximum power		131KW@4000rpm			
Maximum torque M/T		400Nm@2000rpm			
Maximum torque A/T		350Nm@1800rpm			
Towing Capacity (kg)¹					
Maximum towing capacity		3,000			
Maximum towball download		300			
Maximum front axle load		1,260			
Maximum rear axle load		1,800			
Fuel Consumption² – ADR81/02 (Litres per 100kms) combined		GLX Single Cab	GLX Club Cab	GLX Double Cab	GLX-R Double Cab
Manual Transmission		8.0	8.1	8.1	8.3
Automatic Transmission		-	-	9.3	9.6
Fuel Tank Capacity (L)		75	75	75	75
Gross Vehicle Mass (kg)		Single Cab Chassis	Club Cab Chassis	Double Cab Utility	Double Cab Utility
5 M/T		2,930	2,920	2,900	2,930
4 A/T		-	-	2,900	-
5 A/T		-	-	-	2,930
Kerb Mass (kg)					
5 M/T		1,642	1,732	1,916	1,960
4 A/T		-	-	1,926	-
5 A/T		-	-	-	1,975
Maximum Payload (kg)					
5 M/T		1,288	1,188	984	970
4 A/T		-	-	974	-
5 A/T		-	-	-	955
Cargo Area (mm)					
Cargo bed – length		-	-	1,505	1,505
Cargo bed – height		-	-	460	460
Cargo bed – width		-	-	1,470	1,470
Cargo bed – width between arches		-	-	1,085	1,085
Cargo bed – floor height		-	-	850	850

- Subject to state regulation and towbar designs. A Weight Distribution Hitch (WDH) is recommended for towball downloads exceeding 135kg. For further information, please refer to the Triton owners manual.
- These figures are obtained from controlled tests conducted by Mitsubishi Motors Australia to Australian Design Rule ADR81/02 and are provided to assist you in comparing the fuel consumption of Triton with other vehicles.

5 YEAR NEW CAR WARRANTY* | **4** YEAR CAPPED PRICE SERVICING* | **5** YEAR ROADSIDE ASSIST**

DIAMOND ADVANTAGE

CUSTOMER ASSIST | 200+ DEALER NETWORK | GENUINE SERVICE | GENUINE PARTS | INSURANCE | FINANCE | PRE-OWNED VEHICLES

LOVE THAT CAR

†5 year or 130,000km New Vehicle Warranty (whichever comes first). Service conditions apply. *4 years or 60,000km Capped Price Servicing (whichever occurs first). Covers all items specified under the standard "Maintenance for normal operating conditions" scheduled detailed in the service and warranty booklet. Additional service/repair items (if required) are at additional cost. **1 year Roadside Assist (Service conditions apply). For purchases of new Mitsubishi vehicles after 1st October 2012, your initial 12 month roadside assist will be extended for a period of 12 months from the date of the most recent eligible Capped Price Service for that vehicle performed at an authorised Mitsubishi dealer. Roadside assist, if extended in accordance with these items, is available for a maximum of up to 5 years. Conditions apply. Offer subject to change without notice. Excludes Government, Rental and National Fleet customers.

Always consult your authorised Mitsubishi Dealer for the latest details on specifications, options, prices, availability and conditions on New Vehicle warranty. All product illustrations and specifications referred to herein are believed to be correct at the time of publication approval. Subject to any applicable Federal, State or Territory Laws or ordinances, which may apply from time to time, Mitsubishi Motors Australia Limited reserves the right, without notice, or obligation, to discontinue or make changes to designs, specifications, colours and materials of the options and products referred to herein at any time without incurring any liability to any purchaser thereof.
© Mitsubishi Motors Australia Limited. ABN 53 007 870 395 4TRIO314 MIT0312

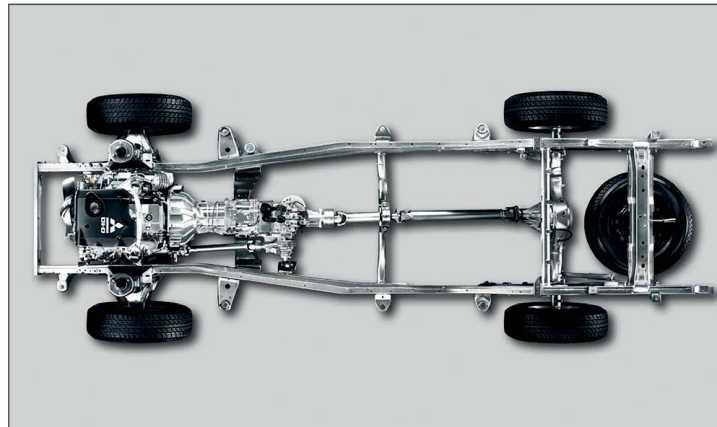
mitsubishi-motors.com.au

15MY March 2014

TRITON 4X2



LOVE THAT CAR



RISE Body

At the heart of any integrated safety system is outstanding design.

Mitsubishi's Reinforced Impact Safety Evolution (RISE) body system combines an energy absorbing front section with a strong, rigid occupant cell to provide outstanding passenger protection in the event of an accident.

The RISE body is coupled with a rigid ladder frame, side impact bars and collision absorbing joints.

The Mitsubishi Triton has everything you need to get the tough jobs done. This dependable, Aussie workhorse feels at home wherever you are – on a building site or around town.

The Triton Double Cab's long bed provides plenty of space for your carrying needs. The pick up models are a huge 1505mm in length and 460mm in height so you can load those bulky items in with no problems. The cargo bed has double-walled support structures to ensure long-term performance.

Whether for work or play, Triton's cargo bed hauls loads with ease. Inner hooks let you tie down your gear securely while the single handle in the rear gate gives you easier access when your hands are full.

To provide essential protection in the event of a frontal collision, every Triton is fitted with driver and front passenger SRS airbags. The front seatbelt system includes pretensioners and force limiters that combine to minimise the potential for serious injury in the event of an accident.

For more information on the Triton range scan the QR code or visit mitsubishi-motors.com.au



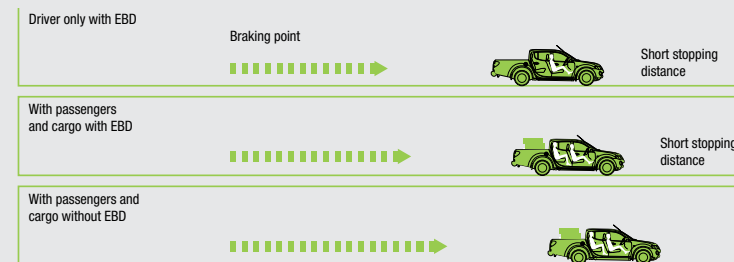
ABS



Anti Lock Braking System (ABS)

Making driving on slippery roads safer, Triton's intelligent 4-channel, 4-sensor braking system monitors different wheel speeds and activates brakes to individual wheels when required to deliver superior control. This allows you to manoeuvre around objects under heavy braking conditions.

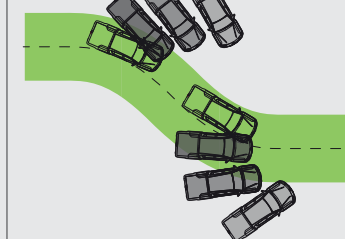
EBD



Electronic Brakeforce Distribution (EBD)

This technology actively monitors different wheel speeds to detect vehicle loads and distributes brake pressure across the front and rear wheels accordingly. Under heavier loads, EBD provides shorter braking distances while enhancing overall control.

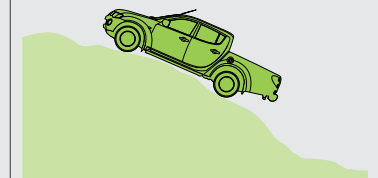
ASC



Active Stability Control (ASC)

Maintains stability and prevents loss of control when cornering, automatically recognising under-steer and over-steer and applying braking force to the diagonal wheel to keep you online through corners.

ATC



Active Traction Control (ATC)

Helps you maintain traction on the most slippery or rugged of surfaces. This intelligent system automatically controls the engine output, so driving wheels are prevented from spinning. Sensing loss of traction in an independent wheel, it applies braking force to that wheel and sends extra power and torque to other wheels with traction to keep you moving.



Take on the toughest jobs in comfort

GLX Interior

Triton 2WD is available in a range of models and body styles including Cab Chassis and Double Cab. When it comes to grunt and power, the Triton doesn't disappoint with a choice of a fuel efficient petrol or intercooled turbo diesel engine.

The 2.4 litre four cylinder 16 valve petrol engine available on GL cab chassis is ideal for jobs around town providing impressive fuel efficiency. Developing 94kW of power and 194Nm of torque, this engine is a proven performer that will never let you down.

The 2.5 litre common rail turbo diesel also offers exceptional fuel economy to take you further for less. It generates an impressive 100kW of power and 314Nm of torque for all your towing and carrying needs.

The 2.5 litre common rail hi-power turbo diesel engine with Variable Geometry Turbo charger (VGT) provides superior performance at any speed. A powerful 131kW of power and 400Nm of torque on the 5-speed manual and 350Nm of torque on 4 speed automatic.

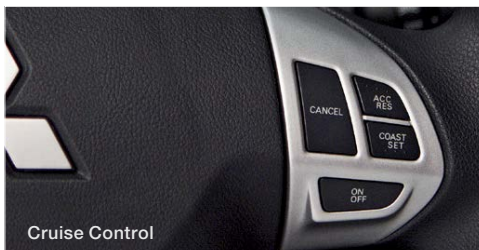
With a whole range of smart, flexible features, the Triton is designed to make your day a breeze. The cabin is ergonomically designed which is important when you spend a lot of time behind the wheel.

There's plenty of leg, shoulder and headroom in the front and the back of the double cab for transporting your family, mates or workmates with ease.

Get the most out of your work day with an in-dash MP3 player compatible audio system, with iPod and USB connectivity. The Mitsubishi link system also allows you to make or receive phone calls hands-free via Bluetooth.

On the comfort side, Triton has everything covered - air conditioning, power windows and power steering are standard on every model.

GLX models have easy-to-use cruise control, so you can stay relaxed on the open road, reduce your fuel consumption and avoid the risk of accidental speeding. Simply set your specific speed, relax your hands around the wheel and enjoy the drive.



Cruise Control



Power Windows



Petrol Model



Diesel Model



2.4L PETROL / 2.5L DIESEL GL SINGLE CAB

Mechanical

2.4L 4 cylinder petrol 16 valve engine
or 2.5L common rail direct injection diesel
5 speed manual transmission
Engine immobiliser
Power steering
Heavy duty suspension
Engine under cover
Simple tool set & jack
Front recovery point

Cargo

Cab Chassis body style

Exterior

16" x 6" steel wheels
Front mud flaps
Front skid plate
Body coloured bumper (diesel only)
Black grille with chrome bars (diesel only)

Comfort

Air conditioning
Side and rear window demisters
Driver's foot rest
Passenger assist grip
Steering column – tilt adjustable

Convenience

Steering wheel audio and phone controls
Room lamp
Door courtesy lamp (all doors)
Cigarette lighter
Ashtray on instrument panel
Central locking with remote keyless entry
Power windows – with driver auto down function
Front wipers with 2 speeds and variable intermittent
Headlamps "ON" audible warning buzzer
Instrument lamp variable dimming control
Analogue instrumentation includes
– Speedometer with tripmeter, tachometer,
fuel and water temperature gauges
Low fuel warning lamp

Storage

Glove compartment – illuminated and lockable
In-dash storage box with lid
Storage pockets in doors (2)
Bottle holders (2)
Centre console storage box

Interior

Vinyl floor covering

Seating

Front sports seats with slide & recline function
(driver & passenger) and driver's height adjustment
Seat trim – cloth (dark grey)
Convenience hook
Steering wheel audio switch
Wide 2 DIN audio

Audio & Media

Bluetooth® 2.0 phone connectivity with voice control
and audio streaming
Steering wheel audio buttons
Wide 2 DIN audio system with AM/FM radio/
CD/MP3 player
2 speakers

Safety

Anti-lock Braking System (ABS) with
Electronic Brakeforce Distribution (EBD)
Driver & passenger SRS airbags
Side door impact beams
Child restraint anchorage
Halogen headlamps
Illuminated hazard switch
Driver & front passenger seat belt pretensions
Seatbelt warning lamp with timer

Security

Steering lock
Fuel lid cap – key locked
Diamond Advantage Roadside Assistance

Options

Front seat split bench with driver side slide & recline
(increases seating capacity to 3) (petrol only)

2.5L DIESEL GLX SINGLE CAB

(Features additional to GL)

Mechanical

2.5L 4 cylinder intercooled turbo diesel engine
4 speed auto transmission with sports shift,
shift lock with key interlock – optional
Engine cover

Exterior

Body coloured bumper
Black grille with chrome bars

Convenience

Cruise Control
Power mirrors

Storage

Floor console with lid (large type with silver trim A/T)
Ash Cup (automatic only)

Safety

Active Stability Control (ASC)
Active Stability Control (ATC)
Smart Brake (Brake Override System)

1. Centre console, driver's seat height adjustment and passenger seat slide and recline function is deleted when bench seat option is selected.
2. Bluetooth® connectivity depends on your phone compatibility.

2.5L DIESEL GLX DOUBLE CAB

(Features additional to GLX Single Cab)

Mechanical

2.5L Hi Power 4cyl intercooled turbo diesel engine
Sports suspension

Cargo

Pick up body with double walled tray
Rear body inner hooks (6)
One touch gate handle
Rear window guard frame
Link type gate stopper

Exterior

16" x 7" steel wheels
Colour coded fender flares
Rear mudflaps
Side steps

Comfort & Convenience

Passenger assist grips (3)
Coat hanger
Accessory socket in console – 12V
Rear centre armrest with cup holders
Remote fuel filler release

Storage

Bottle holders (4)
Seat back pockets

Safety

Side and curtain SRS airbags
Child proof rear door lock
Front seatbelt height adjustable shoulder anchorages
ISOFIX Child Restraint Anchorages (2)

Seats

Front sports seats with slide & recline function
(driver & passenger) and driver's height adjustment
Rear seat headrests (3)
Convenience hooks (2)

Audio & Media

4 speakers

To see our full range of Triton accessories visit mitsubishi-motors.com.au



Rear Ladder Rack Bow



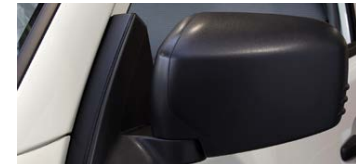
Tool Box



Rear Window Protector



Rope Rail Step 600mm



Side Mirror Extension Spacers



Rubber Mats

TOUGH CHOICES

You can make your Triton even more useful with our range of Genuine Accessories. Ask your Mitsubishi dealer for the complete list today. Mitsubishi Genuine Accessories go through an extensive program of design, development and stringent testing to ensure they meet all applicable government standards as well as Mitsubishi's own rigorous engineering and specifications and performance targets. Using Mitsubishi Genuine Accessories will ensure you get the best quality accessories that are both as durable and reliable as the Mitsubishi you drive.



Side Bars



Side Step - Illumination



Flush Look Tonneau Cover



THULE Luggage Carrier (Aluminium)



Alloy Wheels - Crusader



Weathershields



Front Protection Bar - Alloy



Tonneau Cover Light with Remote Opening



Mud Flap - Front



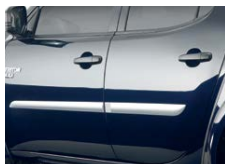
Hard Tonneau Cover (3 Piece)



Tub Liner



Utility Box



Side Protection Mouldings



Tub Mat Liner - Rubber



Tilt Up Side Windows (available on Trade & High Line only)



Reversing Mirror/Camera



Outer Scuff Plates - Front



Neoprene Seat Covers



Carpet Mats

Pictures shown for illustration purposes and may not be product specific. Please check with your Mitsubishi dealer for specific model applications.

COLOURS



RED



COOL SILVER (M)



WHITE



BLACK (P)

METALLIC (M) AND PEARLESCENT (P) PAINTS ARE OPTIONAL EXTRA.

Interiors

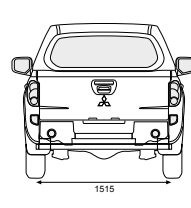
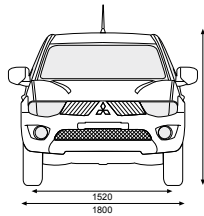
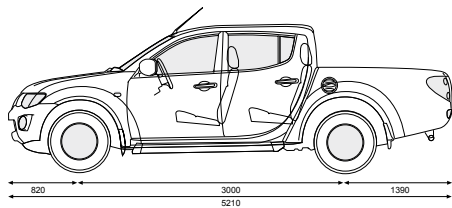


GL/GLX SINGLE CAB – CLOTH
(GL BENCH SEAT OPTION SHOWN)



GLX DOUBLE CAB CLOTH

Exterior Dimensions (mm)



Key Specifications

Engine	2.4L SOHC petrol	2.5L CDI diesel	2.5L Hi-Power CDI diesel
Maximum power	94kW@5250rpm	100kW@3800rpm	131kW@4000rpm
Maximum torque M/T	194Nm@4000rpm	314Nm@2000rpm	400Nm@2000rpm
Maximum torque A/T	-	314Nm@2000rpm	350Nm@1800rpm
Towing Capacity (kg)¹			
Maximum towing capacity	1,800	2,500	3,000
Maximum towball download	180	250	300
Maximum front axle load	1,260	1,260	1,260
Maximum rear axle load	1,800	1,800	1,800
Fuel Consumption² - ADR81/02 (Litres per 100kms) combined			
Manual Transmission	10.9	8.2	8.0
Automatic Transmission	-	8.6	9.3
Fuel Tank Capacity (L)	75	75	75
Gross Vehicle Mass (kg)	Single Cab Chassis		Double Cab Utility
5 M/T	2,750	2,750	2,760
4 A/T	-	2,750	2,760
Kerb Mass (kg)	Single Cab Chassis		Double Cab Utility
5 M/T	1,391	1,505	1,790
4 A/T	-	1,527	1,800
5 A/T	-	-	-
Maximum Payload (kg)	Single Cab Chassis		Double Cab Utility
5 M/T	1,359	1,245	970
4 A/T	-	1,223	960
Cargo Area (mm)	GLX Single Cab		GLX Double Cab
Cargo bed – length	-	-	1,505
Cargo bed – height	-	-	460
Cargo bed – width	-	-	1,470
Cargo bed – width between arches	-	-	1,085
Cargo bed – floor height	-	-	850

1. Subject to state regulation and towbar designs. A Weight Distribution Hitch (WDH) is recommended for towball downloads exceeding 135kg. For further information, please refer to the Triton owners manual.

2. These figures are obtained from controlled tests conducted by Mitsubishi Motors Australia to Australian Design Rule ADR81/02 and are provided to assist you in comparing the fuel consumption of Triton with other vehicles.



DIAMOND ADVANTAGE

CUSTOMER ASSIST | 200+ DEALER NETWORK | GENUINE SERVICE | GENUINE PARTS | INSURANCE | FINANCE | PRE-OWNED VEHICLES

LOVE THAT CAR

†5 year or 130,000km New Vehicle Warranty (whichever comes first). Service conditions apply. *4 years or 60,000km Capped Price Servicing (whichever occurs first). Covers all items specified under the standard "Maintenance for normal operating conditions" scheduled detailed in the service and warranty booklet. Additional service/repair items (if required) are at additional cost. ^1 year Roadside Assist (Service conditions apply). For purchases of new Mitsubishi vehicles after 1st October 2012, your initial 12 month roadside assist will be extended for a period of 12 months from the date of the most recent eligible Capped Price Service for that vehicle performed at an authorised Mitsubishi dealer. Roadside assist, if extended in accordance with these items, is available for a maximum of up to 5 years. Conditions apply. Offer subject to change without notice. Excludes Government, Rental and National Fleet customers.

Always consult your authorised Mitsubishi Dealer for the latest details on specifications, options, prices, availability and conditions on New Vehicle warranty. All product illustrations and specifications referred to herein are believed to be correct at the time of publication approval. Subject to any applicable Federal, State or Territory Laws or ordinances, which may apply from time to time, Mitsubishi Motors Australia Limited reserves the right, without notice, or obligation, to discontinue or make changes to designs, specifications, colours and materials of the options and products referred to herein at any time without incurring any liability to any purchaser thereof.
© Mitsubishi Motors Australia Limited. ABN 53 007 870 395 2TRI0314 MIT0311

mitsubishi-motors.com.au

15MY March 2014