

**TRITON 4X4**



**LOVE THAT CAR**



The hardworking Triton inherits the 4WD-handling heritage from a long line of Mitsubishi rally champions. GLX models incorporate an Easy Select 4WD system that incorporates 2WD High Range for high speed driving comfort, and two transfer modes to deliver superior traction for off road situations; 4WD High Range and 4WD Low Range. When added traction is required off the black top, the free wheeling front differential enables you to shift on-the-fly (at speeds of up to 100km/h) from 2WD to 4WD High Range mode. And Easy Select 4WD also offers a 4WD Low Range mode for conquering the roughest terrain.

Triton GLX-R offers the superior Super Select 4WD System which offers full time 4WD with the option of four driving modes. This system also offers the benefits of on-the-fly shifts from 2WD to 4WD high range at speeds of up to 100km/h.



#### 2H (2WD HIGH RANGE)

Whether you're cruising down the highway or just going across town, 2H mode shifts you into rear-wheel drive for smooth, quiet, fuel-efficient performance.



#### 4H (FULL-TIME 4WD)

When the weather turns bad and the road gets rough, get added traction in 4H mode. This has the flexibility of a centre-differential with viscous coupling unit, providing excellent traction in unpredictable road conditions or on volatile surfaces.



#### 4HLC (4WD HIGH RANGE W/LOCKED CENTRE DIFFERENTIAL)

Keeping you on track in rugged or slippery conditions, 4HLC distributes power equally to all four wheels to meet off-road challenges with a steady sense of control.



#### 4LLC (4WD LOW RANGE W/ LOCKED CENTRE DIFFERENTIAL)

Switch to 4LLC when you need all the tractor-like crawling power your Mitsubishi 4WD is capable of. Maximised low-end torque pulls you through even the roughest terrain, stickiest mud and deepest snow.

The Mitsubishi Triton has everything you need to get the tough jobs done. This dependable, Aussie workhorse feels at home anywhere you are – on a building site or around town.

The Triton Double Cab's long bed provides plenty of space for your carrying needs. The pick-up models have a huge 1505mm in length and 460mm in height so you can load those bulky items in with no problems. The cargo bed has double-walled support structures to ensure long-term performance. Whether for work or play, Triton's cargo bed hauls loads with ease. Inner hooks let you tie down your gear securely while the single handle in the rear gate gives you easier access when your hands are full.

To provide essential protection in the event of a frontal collision, every Triton is fitted with driver and front passenger SRS airbags, while double cab models have side and curtain airbags as standard. The front seatbelt system includes pretensioners and force limiters that combine to minimise the potential for serious injury in the event of an accident.



#### RISE BODY

At the heart of any integrated safety system is outstanding design. Mitsubishi's Reinforced Impact Safety Evolution (RISE) body system (combines an energy absorbing front section with a strong, rigid occupant cell to provide outstanding passenger protection in the event of an accident. The RISE body coupled with a rigid ladder frame, side impact bars and collision absorbing joints.

For more information on the Triton range scan the QR code or visit [mitsubishi-motors.com.au](http://mitsubishi-motors.com.au)



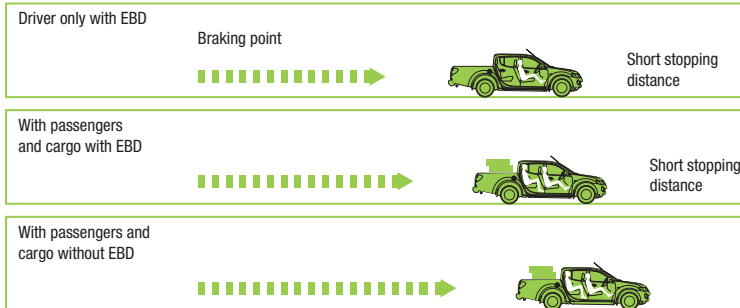
#### ABS



##### Anti-Lock Braking System

Making driving on slippery roads safer, Triton's intelligent 4-channel, 4-sensor braking system monitors different wheel speeds and activates brakes to individual wheels when required to deliver superior control. This allows you to manoeuvre around objects under heavy braking conditions. 4x4 models feature Multi-Mode ABS which adapts braking forces to ideally suit each driving mode.

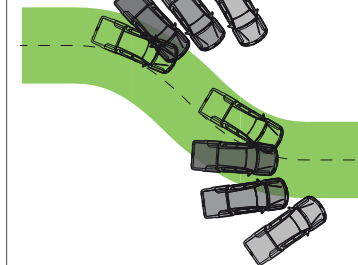
#### EBD



##### Electronic Brakeforce Distribution

This technology actively monitors different wheel speeds to detect vehicle loads and distributes brake pressure across the front and rear wheels accordingly. Under heavier loads, EBD provides shorter braking distances while enhancing overall control.

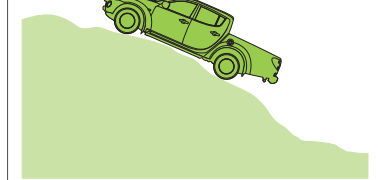
#### ASC



##### Active Stability Control

Maintains stability and prevents loss of control when cornering, automatically recognising under-steer and over-steer and applying braking force to the diagonal wheel to keep you online through corners.

#### ATC



##### Active Traction Control

Helps you maintain traction on the most slippery or rugged of surfaces. This intelligent system automatically controls the engine output, so driving wheels are prevented from spinning. Sensing loss of traction in an independent wheel, it applies braking force to that wheel and sends extra power and torque to other wheels with traction to keep you moving.



Take on the toughest jobs in comfort

GLX-R Shown

Triton 4WD is available in a range of models and body styles including Cab Chassis, Club Cab and Double Cab and when it comes to grunt and power, the Triton doesn't disappoint – with a 2.5 litre Hi-power diesel with Variable Turbo charger (VGT) that offers the latest in common rail diesel technology. The VGT works to optimise the turbine flow rate in order to achieve high torque at low speeds and maximised power at high speeds.

The result is excellent emission control, fuel efficiency and high engine power that develops 131kW of power and 400Nm of torque on 5 speed manual and 350Nm of torque on 4 or 5 speed automatic.

With a whole range of smart, flexible features, the Triton is designed to make your day a breeze. The cabin is ergonomically designed which is important when you spend a lot of time behind the wheel. There's plenty of leg, shoulder and headroom in the front and the back of the double cab for transporting your family, mates or workmates with ease.

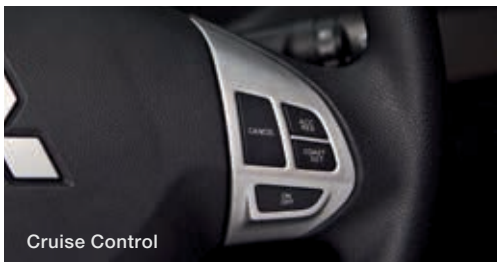
And if you need more room for gear you'd like to carry in the cabin, the Triton Club Cab is the perfect solution. There are a couple of rear seats in case you have the occasional passenger and the rest of the time you can use the extra space to store more items securely.

You can also set your own soundtrack to a hard day's work, or fire up for the weekend – with the in-dash MP3 player compatible audio system, with iPod and USB connectivity. You can get the most out of your work day with Bluetooth® hands free phone operation that lets you make and receive phone calls on the go.

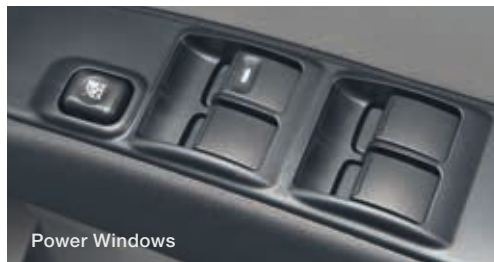
And whether during work hours, or after hours, you'll also feel in constant control in Triton GLX-R with a multi function display feeding you information about your driving environment, such as external temperature, average fuel consumption and range to empty.

And Triton has every detail covered to make even the little tasks easier with features such as air conditioning, power windows and power steering standard on every model. All models have easy-to-use cruise control, so you can stay relaxed on the open road, reduce your fuel consumption and avoid the risk of accidental speeding. Simply set your specific speed, sit back and enjoy the drive.

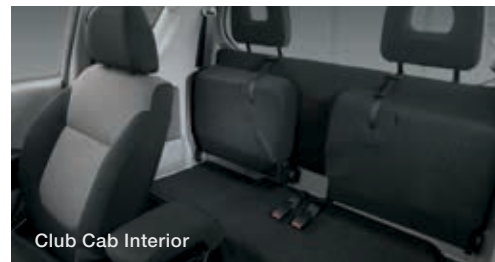
Triton's impressive power and torque provides a 3,000kg towing capacity making it ideal for farms or worksites. Towing the farm equipment, dirt bikes, caravans or boat has never been easier.



Cruise Control



Power Windows



Club Cab Interior



Towing Capacity

Triton's impressive power and torque provides a 3,000kg towing capacity making it ideal for farms or worksites. Towing the farm equipment, dirt bikes, caravans or boat has never been easier.



## GLX SINGLE CAB

### Mechanical

2.5L Hi-power common rail direct injection diesel  
5 speed manual transmission  
East Select 4WD  
Power steering  
Heavy duty suspension  
Engine cover  
Engine under cover  
Simple tool set & jack  
Front recovery point

### Cargo

Cab Chassis body style

### Exterior

16" x 7" steel wheels  
Front mud flaps  
Front skid plate  
Body coloured bumper bars  
Black grille with chrome bars  
Body coloured fender flares

### Comfort

Air conditioning  
Side and rear window demisters  
Driver's foot rest  
Passenger assist grip  
Steering column – tilt adjustable

### Convenience

Cruise Control  
Room lamp  
Door courtesy lamp (all doors)  
Cigarette lighter  
Ashtray  
Power mirrors  
Central locking with remote keyless entry  
Power windows – with driver auto down function  
Front wipers with 2 speeds and variable intermittent  
Headlamps "ON" audible warning buzzer  
Instrument lamp variable dimming control  
Analogue instrumentation includes  
– Speedometer with tripmeter, tachometer, fuel and water temperature gauges  
Low fuel warning lamp  
4WD indicator lamp

### Storage

Glove compartment – illuminated and lockable  
Storage pockets in doors (2)  
Bottle holders (2)  
Centre console storage box

### Interior

Vinyl floor covering

### Seating

Front sports seats with slide & recline function (driver & passenger) and driver's height adjustment  
Seat trim – cloth (dark grey)  
Convenience hook

### Audio & Media

AM/FM radio/CD tuner with MP3 compatibility  
Bluetooth® hands free phone operation<sup>1</sup>  
AUX, USB and iPod Connectivity  
2 speakers

### Safety

Anti-lock Braking System (ABS) with Electronic Brakeforce Distribution (EBD)  
Driver & passenger SRS airbags  
Active Stability Control (ASC)  
Active Traction Control (ATC)  
Side door impact beams  
Child restraint anchorage  
Halogen headlamps  
Illuminated hazard switch  
Driver & front passenger seat belt pretensions  
3 point Emergency Locking Retractor (ELR) seatbelts  
(all seating positions)  
Seatbelt warning lamp with timer  
Smart Brake (Brake Override System)

### Security

Steering lock  
Fuel lid cap – key locked (Single Cab only)  
Diamond Advantage Roadside Assistance

### Options

#### – Bench Seat

Front seat split bench with driver side slide & recline (increases seating capacity to 3)<sup>2</sup>



## GLX CLUB CAB

### (Features additional to GLX Single Cab)

### Cargo

Pick-up body style  
One touch tailgate handle  
Rear window guard  
Link type tailgate stopper

### Convenience

Accessory power socket  
Coat hook  
Remote fuel filler release

### Storage

Cup holders

### Safety

Front seatbelts height adjustable shoulder anchorages

### Options

– Cab Chassis



## GLX DOUBLE CAB

### (Features additional to GLX Club Cab)

### Mechanical

Sports suspension

### Exterior

Side steps (platform type)

### Comfort & Convenience

Passenger assist grips (3)  
Rear centre armrest with cup holders  
Carpet floor covering (Automatic Only)



## GLX-R DOUBLE CAB

### (Features additional to GLX Double Cab)

### Mechanical

5 speed Sports Mode auto transmission (optional)  
Super Select 4WD

### Exterior

17" alloy wheels  
Chrome door mirrors with turn indicator and fold control  
Wire type gate stopper  
Chrome exterior door handles  
Fog lamps  
Privacy glass  
Side steps (tube type)  
Roof antenna  
Side protection mouldings  
Sports bar  
Rear step  
Honeycomb grille with chrome surround  
Tailgate mounted stop lamp

### Interior

Passenger side vanity mirror  
Leather bound steering wheel  
Leather bound gearshift knob  
Leather bound 4WD transfer-shift lever  
Titanium look instrument panel & surrounds  
Carpet floor covering  
Chrome interior door handles

### Comfort & Convenience

Automatic air conditioning  
Ticket holder (driver side sunvisor)  
Map lamps with sunglass pocket  
Illuminated ignition key  
Rear power window  
– with auto up and down function

### Seats

Seat trim – sports cloth (black)

### Audio & Media

Multi function display includes:  
– clock with date  
– outside temperature  
– compass  
– barometer  
– altimeter  
– trip computer with range to empty and average fuel consumption functions  
– audio information  
Speakers (6)  
Steering wheel audio controls

### Options

#### – Luxury Pack (Automatic Only)

Mitsubishi Power Sound System  
Leather seat trim  
Driver power seat – slide, recline and height  
Leather console lid  
Diff Lock

#### – Rear Diff Lock (Manual Only)

### Audio & Media

4 speakers

### Options

#### – Plus Pack

Alloy Wheels  
Leather bound steering wheel  
Leather bound shift knobs  
Rear step

#### – Cab Chassis

<sup>1</sup>Bluetooth® connectivity depends on your phone compatibility.

<sup>2</sup>Centre console with cup holders & 12V accessory socket, driver's seat height adjustment and passenger seat slide and recline is deleted when bench seat option is selected.

To see our full range of Triton accessories visit [mitsubishi-motors.com.au](http://mitsubishi-motors.com.au)



# TOUGH CHOICES

You can make your Triton even more useful with our range of Genuine Accessories. Ask your Mitsubishi dealer for the complete list today. Mitsubishi Genuine Accessories go through an extensive program of design, development and stringent testing to ensure they meet all applicable government standards as well as Mitsubishi's own rigorous engineering and specifications and performance targets. Using Mitsubishi Genuine Accessories will ensure you get the best quality accessories that are both as durable and reliable as the Mitsubishi you drive.



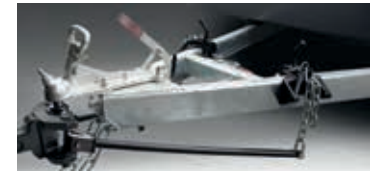
Sports Bar (1 Piece)



Driving Lights – Lightforce



Front Protection Bar – Alloy



Weight Distribution Hitch



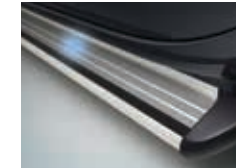
Canopy – Trade Style



Rubber Mats



Side Steps – Alloy



Side Step – Illumination



Vinyl Tonneau Cover



THULE Luggage Pods



Alloy Wheels – Crusader



Weathershield



Front Protection Bar – Alloy – Pedestrian Safe



Tonneau Cover Light with Remote Opening



Mud Flap – Front



Hard Tonneau Cover (3 Piece)



Tub Liner



Utility Box



Side Protection Mouldings



Tub Mat Liner – Rubber



Tilt Up Side Windows (available on Trade & High Line only)



Reversing Mirror/Camera



Outer Scuff Plates – Front



Neoprene Seat Covers



Carpet Mats

Pictures shown for illustration purposes and may not be product specific. Please check with your Mitsubishi dealer for specific model applications.

# COLOURS



RED



DARK BLUE (P)\* (GLX-R ONLY)



WHITE



COOL SILVER (M)



BLACK (P)



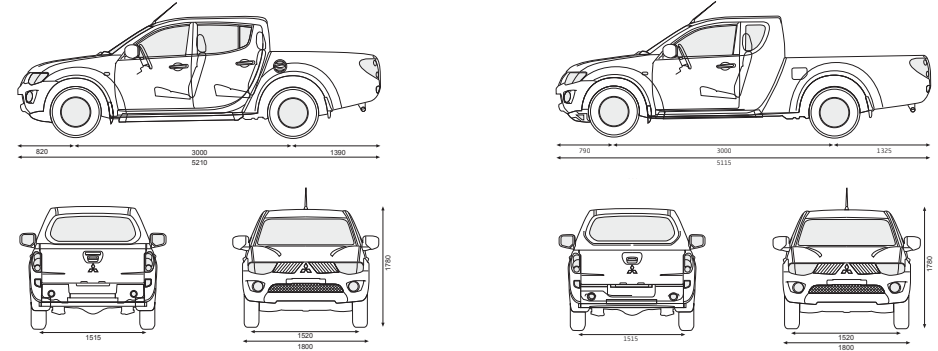
IRONBARK (P)\*\* (GLX-R ONLY)



CHARCOAL (M)\* (GLX-R ONLY)

METALLIC (M) AND PEARLESCENT (P) PAINTS ARE OPTIONAL EXTRAS  
\* NOT AVAILABLE ON GLX  
\*\* AVAILABLE ON GLX-R ONLY

## Exterior Dimensions (mm)



## Key Specifications

	2.5L DOHC CDI			
<b>Engine</b>				
Maximum power	131kW@4000rpm			
Maximum torque M/T	400Nm@2000rpm			
Maximum torque A/T	350Nm@2000rpm			
<b>Towing Capacity (kg)<sup>1</sup></b>				
Maximum towing capacity	3,000			
Maximum towball download	300			
Maximum front axle load	1,260			
Maximum rear axle load	1,800			
<b>Fuel Consumption<sup>2</sup> – ADR81/02 (Litres per 100kms) combined</b>	<b>GLX Single Cab</b>	<b>GLX Club Cab</b>	<b>GLX Double Cab</b>	<b>GLX-R Double Cab</b>
Manual Transmission	8.0	8.1	8.1	8.3
Automatic Transmission	-	-	9.3	9.6
Fuel Tank Capacity (L)	75	75	75	75
<b>Gross Vehicle Mass (kg)</b>	<b>Single Cab Chassis</b>	<b>Club Cab Chassis/Utility</b>	<b>Double Cab Chassis/Utility</b>	<b>Double Cab Utility</b>
5 M/T	2,930	2,920	2,900	2,930
4 A/T	-	-	2,900	-
5 A/T	-	-	-	2,930
<b>Kerb Mass (kg)</b>				
5 M/T	1,640	1,731/1,867	1,795/1,916	1,961
4 A/T	-	-	1,805/1,926	-
5 A/T	-	-	-	1,976
<b>Maximum Payload (kg)</b>				
5 M/T	1,290	1,189/1,053	1,105/984	969
4 A/T	-	-	1,095/974	-
5 A/T	-	-	-	954
<b>Cargo Area (mm)</b>				
Cargo bed – length	-	1,805	1,505	1,505
Cargo bed – height	-	460	460	460
Cargo bed – width	-	1,470	1,470	1,470
Cargo bed – width between arches	-	1,085	1,085	1,085
Cargo bed – floor height	-	860	850	850

- Subject to state regulation and towbar designs. A Weight Distribution Hitch (WDH) is recommended for towball downloads exceeding 135kg. For further information, please refer to the Triton owners manual.
- These figures are obtained from controlled tests conducted by Mitsubishi Motors Australia to Australian Design Rule ADR81/02 and are provided to assist you in comparing the fuel consumption of Triton with other vehicles.

## Interiors



GLX – Cloth



GLX-R – Sports Cloth



GLX-R – Leather (Optional)



**CUSTOMER ASSIST | 200+ DEALER NETWORK | GENUINE SERVICE | GENUINE PARTS | INSURANCE | FINANCE | PRE-OWNED VEHICLES**

**LOVE THAT CAR**

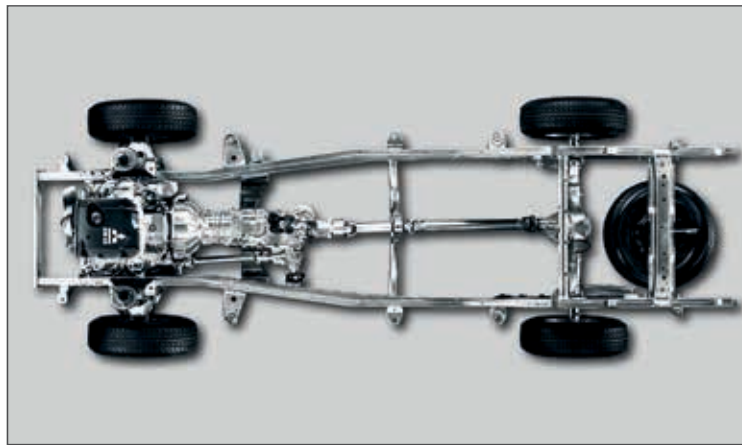
†5 year or 130,000km New Vehicle Warranty (whichever comes first). Service conditions apply. \*4 years or 60,000km Capped Price Servicing (whichever occurs first). Covers all items specified under the standard "Maintenance for normal operating conditions" scheduled detailed in the service and warranty booklet. Additional service/repair items (if required) are at additional cost. ^1 year Roadside Assist (Service conditions apply). For purchases of new Mitsubishi vehicles after 1st October 2012, your initial 12 month roadside assist will be extended for a period of 12 months from the date of the most recent eligible Capped Price Service for that vehicle performed at an authorised Mitsubishi dealer. Roadside assist, if extended in accordance with these items, is available for a maximum of up to 5 years. Conditions apply. Offer subject to change without notice. Excludes Government, Rental and National Fleet customers.

Always consult your authorised Mitsubishi Dealer for the latest details on specifications, options, prices, availability and conditions on New Vehicle warranty. All product illustrations and specifications referred to herein are believed to be correct at the time of publication approval. Subject to any applicable Federal, State or Territory Laws or ordinances, which may apply from time to time, Mitsubishi Motors Australia Limited reserves the right, without notice, or obligation, to discontinue or make changes to designs, specifications, colours and materials of the options and products referred to herein at any time without incurring any liability to any purchaser thereof. © Mitsubishi Motors Australia Limited. ABN 53 007 870 395 4 TRIO913 MIT0092

**TRITON 4X2**



**LOVE THAT CAR**



### RISE Body

At the heart of any integrated safety system is outstanding design.

Mitsubishi's Reinforced Impact Safety Evolution (RISE) body system combines an energy absorbing front section with a strong, rigid occupant cell to provide outstanding passenger protection in the event of an accident.

The RISE body is coupled with a rigid ladder frame, side impact bars and collision absorbing joints.

The Mitsubishi Triton has everything you need to get the tough jobs done. This dependable, Aussie workhorse feels at home wherever you are – on a building site or around town.

The Triton Double Cab's long bed provides plenty of space for your carrying needs. The pick up models are a huge 1505mm in length and 460mm in height so you can load those bulky items in with no problems. The cargo bed has double-walled support structures to ensure long-term performance.

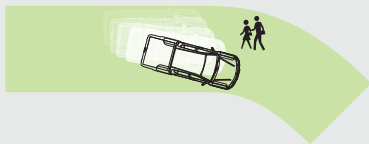
Whether for work or play, Triton's cargo bed hauls loads with ease. Inner hooks let you tie down your gear securely while the single handle in the rear gate gives you easier access when your hands are full.

To provide essential protection in the event of a frontal collision, every Triton is fitted with driver and front passenger SRS airbags. The front seatbelt system includes pretensioners and force limiters that combine to minimise the potential for serious injury in the event of an accident.

For more information on the Triton range scan the QR code or visit [mitsubishi-motors.com.au](http://mitsubishi-motors.com.au)



### ABS



#### Anti Lock Braking System (ABS)

Making driving on slippery roads safer, Triton's intelligent 4-channel, 4-sensor braking system monitors different wheel speeds and activates brakes to individual wheels when required to deliver superior control. This allows you to manoeuvre around objects under heavy braking conditions.

### EBD

Driver only with EBD

Braking point



Short stopping distance

With passengers and cargo with EBD



Short stopping distance

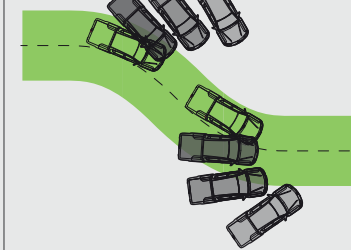
With passengers and cargo without EBD



#### Electronic Brakeforce Distribution (EBD)

This technology actively monitors different wheel speeds to detect vehicle loads and distributes brake pressure across the front and rear wheels accordingly. Under heavier loads, EBD provides shorter braking distances while enhancing overall control.

### ASC



#### Active Stability Control (ASC)

Maintains stability and prevents loss of control when cornering, automatically recognising under-steer and over-steer and applying braking force to the diagonal wheel to keep you online through corners.

### ATC



#### Active Traction Control (ATC)

Helps you maintain traction on the most slippery or rugged of surfaces. This intelligent system automatically controls the engine output, so driving wheels are prevented from spinning. Sensing loss of traction in an independent wheel, it applies braking force to that wheel and sends extra power and torque to other wheels with traction to keep you moving.





Take on the toughest jobs in comfort

GLX Interior

Triton 2WD is available in a range of models and body styles including Cab Chassis and Double Cab and when it comes to grunt and power, the Triton doesn't disappoint – with a choice of a fuel efficient petrol or intercooled turbo diesel engine.

The 2.4 litre four cylinder 16 valve petrol engine available on GL cab chassis is ideal for jobs around town providing impressive fuel efficiency. Developing 94kW of power and 194Nm of torque, this engine is a proven performer that will never let you down.

Generating an impressive 100kW of power and 314Nm of torque for all your towing and carrying needs the 2.5 litre common rail turbo diesel also offers exceptional fuel economy to take you further for less.

While the 2.5L common rail hi-power turbo diesel engine with Variable Geometry Turbo charger (VGT) provides superior performance that you can't argue with.

A powerful 131kW of power and 400Nm of torque on the 5-speed manual and 350Nm of torque on 4 or 5 speed automatic.

With a whole range of smart, flexible features, the Triton is designed to make your day a breeze. The cabin is ergonomically designed which is important when you spend a lot of time behind the wheel.

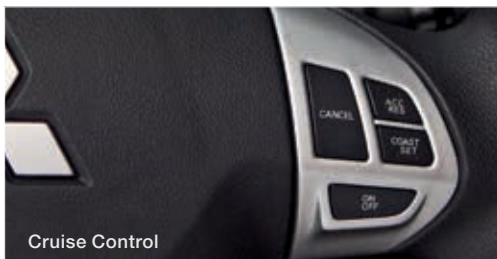
There's plenty of leg, shoulder and headroom in the front and the back of the double cab for transporting your family, mates or workmates with ease.

You can also set your own soundtrack to a hard day's work, or fire up for the weekend – with the in-dash MP3 player compatible audio system, with iPod and USB connectivity.

In GLX models you can get the most out of your work day with Bluetooth® hands free phone operation that lets you make and receive phone calls on the go.

And Triton has every detail covered to make even the little tasks easier with features such as air conditioning, power windows and power steering standard on every model.

GLX models have easy-to-use cruise control, so you can stay relaxed on the open road, reduce your fuel consumption and avoid the risk of accidental speeding. Simply set your specific speed, sit back and enjoy the drive.



Cruise Control



Power Windows



## 2.4L PETROL GL SINGLE CAB

### Mechanical

2.4L 4 cylinder petrol 16 valve engine  
5 speed manual transmission  
Engine immobiliser  
Power steering  
Heavy duty suspension  
Engine under cover  
Simple tool set & jack  
Front recovery point

### Cargo

Cab Chassis body style

### Exterior

16" x 6" steel wheels  
Front mud flaps  
Front skid plate

### Comfort

Air conditioning  
Side and rear window demisters  
Driver's foot rest  
Passenger assist grip  
Steering column – tilt adjustable

### Convenience

Room lamp  
Door courtesy lamp (all doors)  
Cigarette lighter  
Ashtray on instrument panel  
Central locking with remote keyless entry  
Power windows – with driver auto down function  
Front wipers with 2 speeds and variable intermittent  
Headlamps "ON" audible warning buzzer  
Instrument lamp variable dimming control  
Analogue instrumentation includes  
– Speedometer with tripmeter, tachometer,  
fuel and water temperature gauges  
Low fuel warning lamp

### Storage

Glove compartment – illuminated and lockable  
In-dash storage box with lid  
Storage pockets in doors (2)  
Bottle holders (2)  
Centre console storage box

### Interior

Vinyl floor covering

### Seating

Front sports seats with slide & recline function  
(driver & passenger) and driver's height adjustment  
Seat trim – cloth (dark grey)  
Convenience hook

### Audio & Media

AM/FM radio/CD tuner with MP3 compatibility  
2 speakers

### Safety

Anti-lock Braking System (ABS) with  
Electronic Brakeforce Distribution (EBD)  
Driver & passenger SRS airbags  
Side door impact beams  
Child restraint anchorage  
Halogen headlamps  
Illuminated hazard switch  
Driver & front passenger seat belt pretensions  
Seatbelt warning lamp with timer

### Security

Steering lock  
Fuel lid cap – key locked  
Diamond Advantage Roadside Assistance

### Options

Front seat split bench with driver side slide & recline  
(increases seating capacity to 3)<sup>1</sup>



## 2.5L DIESEL GLX SINGLE CAB

### (Features additional to GL)

#### Mechanical

2.5L 4 cylinder intercooled turbo diesel engine  
4 speed auto transmission with sports shift,  
shift lock with key interlock – optional  
Engine cover

#### Exterior

Body coloured bumper  
Black grille with chrome bars

#### Convenience

Cruise Control  
Power mirrors

#### Storage

Floor console with lid (large type with silver trim A/T)  
Ash Cup (automatic only)

#### Audio & Media

AM/FM radio/CD Tuner with MP3 compatibility,  
AUX, USB and iPod connectivity  
Bluetooth® hands free phone operation<sup>2</sup>

#### Safety

Active Stability Control (ASC)  
Active Stability Control (ATC)  
Smart Brake (Brake Override System)

#### Options

Front seat split bench with driver side slide & recline  
(increase seating capacity to 3)<sup>1</sup>

1. Centre console, driver's seat height adjustment and passenger seat slide and recline function is deleted when bench seat option is selected.
2. Bluetooth® connectivity depends on your phone compatibility



## 2.5L DIESEL GLX DOUBLE CAB

### (Features additional to GLX Single Cab)

#### Mechanical

2.5L Hi Power 4cyl intercooled turbo diesel engine  
Sports suspension

#### Cargo

Pick up body with double walled tray  
Rear body inner hooks (6)  
One touch gate handle  
Rear window guard frame  
Link type gate stopper

#### Exterior

16" x 7" steel wheels  
Colour coded fender flares  
Rear mudflaps  
Side steps

#### Comfort & Convenience

Passenger assist grips (3)  
Coat hanger  
Accessory socket in console – 12V  
Rear centre armrest with cup holders  
Remote fuel filler release

#### Storage

Bottle holders (4)  
Seat back pockets

#### Safety

Side and curtain SRS airbags  
Child proof rear door lock  
Front seatbelt height adjustable shoulder anchorages

#### Seats

Front sports seats with slide & recline function  
(driver & passenger) and driver's height adjustment  
Rear seat headrests (3)  
Convenience hooks (2)

#### Audio & Media

4 speakers

To see our full range of Triton accessories visit [mitsubishi-motors.com.au](http://mitsubishi-motors.com.au)



Rear Ladder Rack Bow



Tool Box



Rear Window Protector



Rope Rail Step 600mm



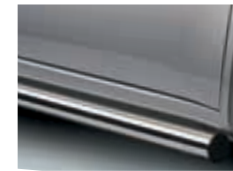
Side Mirror Extension Spacers



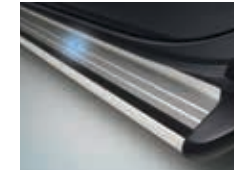
Rubber Mats

# TOUGH CHOICES

You can make your Triton even more useful with our range of Genuine Accessories. Ask your Mitsubishi dealer for the complete list today. Mitsubishi Genuine Accessories go through an extensive program of design, development and stringent testing to ensure they meet all applicable government standards as well as Mitsubishi's own rigorous engineering and specifications and performance targets. Using Mitsubishi Genuine Accessories will ensure you get the best quality accessories that are both as durable and reliable as the Mitsubishi you drive.



Side Bars



Side Step - Illumination



Vinyl Tonneau Cover



THULE Luggage Carrier (Aluminium)



Alloy Wheels - Crusader



Weathershields



Front Protection Bar - Alloy



Tonneau Cover Light with Remote Opening



Mud Flap - Front



Hard Tonneau Cover (3 Piece)



Tub Liner



Utility Box



Side Protection Mouldings



Tub Mat Liner - Rubber



Tilt Up Side Windows (available on Trade & High Line only)



Reversing Mirror/Camera



Outer Scuff Plates - Front



Neoprene Seat Covers



Carpet Mats

Pictures shown for illustration purposes and may not be product specific. Please check with your Mitsubishi dealer for specific model applications.

# COLOURS



RED



COOL SILVER (M)



WHITE



BLACK (P)

METALLIC (M) AND PEARLESCENT (P) PAINTS ARE OPTIONAL EXTRA.

## Interiors

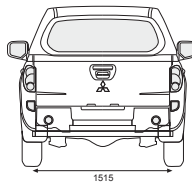
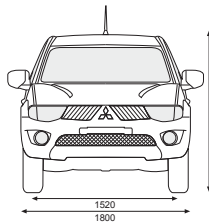
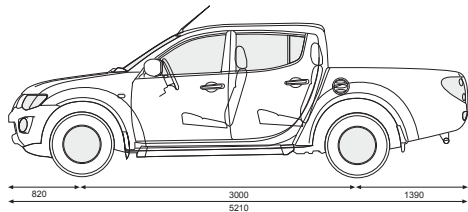


GL/GLX SINGLE CAB – CLOTH (BENCH SEAT OPTION SHOWN)



GLX DOUBLE CAB CLOTH

## Exterior Dimensions (mm)



## Key Specifications

Engine	2.4L SOHC petrol	2.5L CDI diesel	2.5L Hi-Power CDI diesel
Maximum power	94kW@5250rpm	100kW@3800rpm	131kW@4000rpm
Maximum torque M/T	194Nm@4000rpm	314Nm@2000rpm	400Nm@2000rpm
Maximum torque A/T	-	314Nm@2000rpm	350Nm@2000rpm
<b>Towing Capacity (kg)<sup>1</sup></b>			
Maximum towing capacity	1,800	2,500	3,000
Maximum towball download	180	250	300
Maximum front axle load	1,260	1,260	1,260
Maximum rear axle load	1,800	1,800	1,800
<b>Fuel Consumption<sup>2</sup> - ADR81/02 (Litres per 100kms) combined</b>			
Manual Transmission	10.9	8.2	8.0
Automatic Transmission	-	8.6	9.3
Fuel Tank Capacity (L)	75	75	75
<b>Gross Vehicle Mass (kg)</b>	<b>Single Cab Chassis</b>		<b>Double Cab Utility</b>
5 M/T	2,750	2,750	2,760
4 A/T	-	2,750	2,760
<b>Kerb Mass (kg)</b>	<b>Single Cab Chassis</b>		<b>Double Cab Utility</b>
5 M/T	1,389	1,505	1,778
4 A/T	-	1,528	1,788
5 A/T	-	-	-
<b>Maximum Payload (kg)</b>	<b>Single Cab Chassis</b>		<b>Double Cab Utility</b>
5 M/T	1,361	1,245	982
4 A/T	-	1,223	972
<b>Cargo Area (mm)</b>	<b>GLX Single Cab</b>		<b>GLX Double Cab</b>
Cargo bed – length	-	-	1,505
Cargo bed – height	-	-	460
Cargo bed – width	-	-	1,470
Cargo bed – width between arches	-	-	1,085
Cargo bed – floor height	-	-	850

- Subject to state regulation and towbar designs. A Weight Distribution Hitch (WDH) is recommended for towball downloads exceeding 135kg. For further information, please refer to the Triton owners manual.
- These figures are obtained from controlled tests conducted by Mitsubishi Motors Australia to Australian Design Rule ADR81/02 and are provided to assist you in comparing the fuel consumption of Triton with other vehicles.



# DIAMOND ADVANTAGE

CUSTOMER ASSIST | 200+ DEALER NETWORK | GENUINE SERVICE | GENUINE PARTS | INSURANCE | FINANCE | PRE-OWNED VEHICLES

LOVE THAT CAR

†5 year or 130,000km New Vehicle Warranty (whichever comes first). Service conditions apply. \*4 years or 60,000km Capped Price Servicing (whichever occurs first). Covers all items specified under the standard "Maintenance for normal operating conditions" scheduled detailed in the service and warranty booklet. Additional service/repair items (if required) are at additional cost. ^1 year Roadside Assist (Service conditions apply). For purchases of new Mitsubishi vehicles after 1st October 2012, your initial 12 month roadside assist will be extended for a period of 12 months from the date of the most recent eligible Capped Price Service for that vehicle performed at an authorised Mitsubishi dealer. Roadside assist, if extended in accordance with these items, is available for a maximum of up to 5 years. Conditions apply. Offer subject to change without notice. Excludes Government, Rental and National Fleet customers.

Always consult your authorised Mitsubishi Dealer for the latest details on specifications, options, prices, availability and conditions on New Vehicle warranty. All product illustrations and specifications referred to herein are believed to be correct at the time of publication approval. Subject to any applicable Federal, State or Territory Laws or ordinances, which may apply from time to time, Mitsubishi Motors Australia Limited reserves the right, without notice, or obligation, to discontinue or make changes to designs, specifications, colours and materials of the options and products referred to herein at any time without incurring any liability to any purchaser thereof. © Mitsubishi Motors Australia Limited. ABN 53 007 870 395 2TRI0713 MIT0091