



Innovation  
that excites

# NISSAN NAVARA D22







A ute born of a legendary, tough workhorse tradition and a long history of sheer guts and strength, with the toughness and reliability to carry almost anything to almost anywhere. The Nissan Navara D22 will shift your workload; It will shift your expectations; it will **shift the way you move.**



### **NISSAN NAVARA D22 RANGE**

The Nissan Navara D22 range is as tough as nails and boasts Nissan's famous reliability. With three models – the DX 4x2 and 4x4 Single Cabs plus the ST-R Dual Cab 4x4, there's a Nissan Navara D22 to take on almost any challenge.

### **ENGINE**

An intercooled 2.5 litre common rail turbo-diesel engine balances toughness and power with excellent fuel efficiency. It gives the Nissan Navara D22 a carrying capacity of up to 1,370kg (excluding tray) on the DX 4x2 model, and a braked towing capacity of 2,800kg on the DX 4x4 and ST-R 4x4 models.

### **LIMITED SLIP DIFFERENTIAL (LSD)**

The Nissan Navara D22 range comes standard with LSD meaning power from the engine is distributed evenly to improve traction.

### **SUSPENSION**

Leaf spring suspension in the rear, and double wishbone suspension with stabiliser bar at the front, means you'll always ride in comfort.

### **TRANSMISSION**

The 5-speed manual transmission offers clean and easy shift changes and when moving large loads, the braking system's load sensing valve increases braking power to the rear, making light work of tough jobs.



Polar White DX Single Cab 4x4 with optional steel tray painted white (rectangular square headboard).





**VERSATILE INTERIOR**

The interior of the Nissan Navara D22 is versatile, making it ideal for both work and play, with all models featuring air conditioning, power windows and central locking. The ST-R also comes with a sports interior, with front bucket seats and comfortable seating for five.

**BLUETOOTH® HANDSFREE PHONE SYSTEM**

Link your compatible mobile phone to make and receive calls safely.

**AUDIO SYSTEM**

All models feature an AM/FM radio and a CD player including an auxiliary MP3 player input jack and USB Port for iPod® connectivity.

\*iPod is a registered trade mark of Apple Inc.

ST-R Dual Cab 4x4 interior shown.





**SAFETY**

All models feature driver and passenger front-impact SRS airbags and front seatbelt pre-tensioners, ventilated disc brakes at the front and drum brakes at the rear to help you stay safe no matter what the conditions.

**ANTI-LOCK BRAKING SYSTEM (ABS)**

Every Nissan Navara D22 features ABS, which provides optimum braking performance to help prevent wheel lock-up in panic-braking situations.





#### NAVARA D22 DX SINGLE CAB 4X2

- 2.5 litre common rail turbo-diesel engine
- 5-speed manual transmission
- Driver and passenger SRS airbags
- Front seatbelt pretensioners
- Anti-lock Braking System (ABS)
- Ventilated front disc brakes
- Limited Slip Differential (LSD)
- Front bench seat
- Vinyl floor covering.
- 1,500kg towing capacity (trailer with brakes)
- Air-conditioning
- Power Windows
- Central Locking
- Single CD player with AM/FM radio
- Auxiliary MP3 player input jack
- iPod<sup>^</sup> connectivity (or USB storage device) via USB connection
- Bluetooth<sup>®</sup> handsfree phone system
- 15" steel wheels

<sup>^</sup>iPod is a registered trade mark of Apple Inc.

#### NAVARA D22 DX SINGLE CAB 4X4

##### ALL THE FEATURES OF DX 4X2 SINGLE CAB PLUS/OR:

- 2,800kg towing capacity (trailer with brakes)
- Black over-fender flares
- 4x4 with low range
- 16" steel wheels

#### WHEELS

The Nissan Navara D22 Single Cabs come with durable steel wheels suitable for nearly any job at hand, while the Nissan Navara D22 ST-R Dual Cab steps up a notch with 16" alloys.

#### RUGGED EXTERIOR

All Nissan Navara D22 models feature a bonnet scoop that increases airflow to the turbo charger's intercooler and hints at the toughness under the hood, as well as halogen headlights and front mud flaps. The 4x4 Single Cab also steps up with black over-fender flares, while the ST-R Dual Cab comes standard with an alloy rear sports bar, side steps, chrome power mirrors and rear chrome step bumper.

Polar White DX Single Cab 4x2 with optional aluminium tray (rectangular hollow square headboard).





**NAVARA D22 ST-R DUAL CAB 4X4**

**ALL THE FEATURES OF DX 4X4 SINGLE CAB PLUS/OR:**

- Front bucket seats
- Sports seat trim
- Carpet floor covering
- Chrome power mirrors
- 6 in-dash CD player with AM/FM radio
- Alloy sports bar and side steps
- Body coloured front bumper and over-fender flares
- Chrome rear step bumper
- Chrome grille surround
- 16" alloy wheels





Polar White DX Single Cab 4x4 with optional steel tray painted white (rectangular hollow square headboard).

## **MYNISSAN**

A complete ownership experience to help you get the most out of your Nissan. It includes the following:

### **3 YEAR/100,000KM WARRANTY**

Receive assurance with a 3 year/100,000km warranty with the option of extending further for up to 6 years.

### **24-HOUR ROADSIDE ASSISTANCE FOR 3 YEARS**

No matter where you're planning to journey, you'll have the peace of mind of knowing that if you lock your keys in the car, have a flat tyre or battery, or run out of fuel, we'll help get you back on the road at no charge<sup>†</sup>.

### **CAPPED PRICE SERVICE**

For 6 years or 120,000kms\* you'll always know the maximum price you'll pay when you come in for your next Scheduled Service at any Nissan Dealer.

### **FACTORY-TRAINED TECHNICIANS**

Using dedicated diagnostic equipment and genuine parts they'll keep your vehicle in top condition.

### **MYNISSAN IPHONE APP**

Request roadside assistance and advise of your location using your phone's GPS, plan trips, search for locations, plus set registration, service and parking expiry reminders.

### **NISSAN GENUINE ACCESSORIES**

Your Nissan Dealer can show you a variety of accessories to protect, enhance and personalise your Nissan Navara D22.

### **FINANCIAL SERVICES**

Choose from a range of finance options at very competitive rates and terms, as well as various insurance solutions to protect you and your vehicle.

### **NAVARA LOAN VEHICLE**

In the unlikely event that your Nissan Navara D22 is off road for more than 24 hours due to repair, we'll provide you with a loan vehicle until it's back on the road.<sup>^</sup>



**our comprehensive ownership support**

<sup>†</sup>Terms and conditions apply, please visit [nissan.com.au/roadsideassistance](http://nissan.com.au/roadsideassistance).  
<sup>\*</sup>Ask your Nissan Dealer to explain exactly what items are covered in each Scheduled Service. Applies to the first 12 X 10,000kms scheduled service intervals for up to 6 years/120,000kms (whichever occurs first). Some exclusions apply. Ask your Nissan Dealer or visit [nissan.com.au/cpstcs](http://nissan.com.au/cpstcs) for full terms and conditions. <sup>^</sup>Offer is subject to availability as well as terms and conditions of use.



**ST-R DUAL CAB MODEL**



Polar White (QM1)



Brilliant Silver (K23)\*



Cosmic Black (G42)



Deep Sapphire (RAA)\*



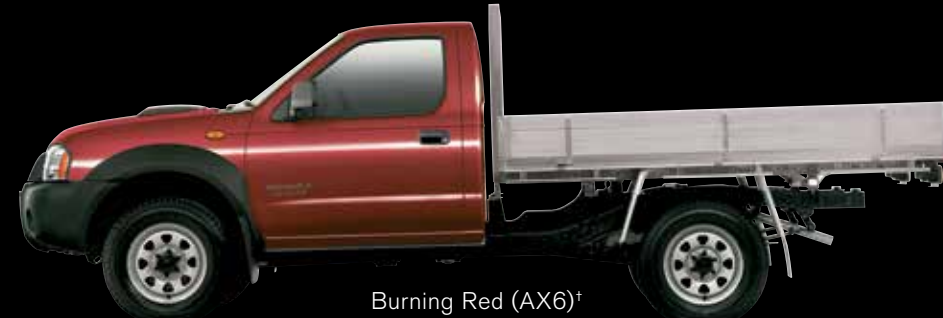
Polar White (QM1)†



Brilliant Silver (K23)\*†



Cosmic Black (G42)†



Burning Red (AX6)†



**DX SINGLE CAB MODELS**

Printed colours may vary from the actual paint colours. \*Indicates a premium paint, which is available at extra cost. †Towbar and tray optional extras.



Specifications	4x2 DX <sup>†</sup> Single Cab Chassis	4x4 DX <sup>†</sup> Single Cab Chassis	4x4 ST-R Dual Cab Ute
Engine			
2.5 litre intercooled turbo-diesel, DOHC, YD25 Diesel	●	●	●
Displacement (cc)	2488	2488	2488
Bore x stroke (mm)	89 x 100	89 x 100	89 x 100
Compression ratio	16.5:1	16.5:1	16.5:1
Max power (kW@rpm)	98@3600	98@3600	98@3600
Max torque (Nm@rpm)	304@2000	304@2000	304@2000

Transmission			
5-speed manual	●	●	●
Ratio 1st manual	3.580	3.580	3.580
Ratio 2nd manual	2.077	2.077	2.077
Ratio 3rd manual	1.360	1.360	1.360
Ratio 4th manual	1.000	1.000	1.000
Ratio 5th manual	0.760	0.760	0.760
Ratio reverse manual	3.636	3.636	3.636
Final drive ratio manual	3.700	4.625	4.625
Transfer ratio - high		1:1	1:1
Transfer ratio - low		2.02:1	2.02:1

Dimensions			
Overall length (bumper to bumper) (mm)	5020**	5020**	5180
Overall width (excluding mirrors) (mm)	1690**	1825**	1825
Overall height (excluding roof rails) (mm)	1610**	1700**	1725
Wheel base (mm)	2950	2950	2950
Track front/rear (mm)	1395/1390	1525/1505	1525/1505
Minimum turning circle kerb to kerb (m)	11.2	12	12.6
Ground (clearance unladen) (mm)	155	220	225
Overhang - front (mm)	920	920	920
Overhang - rear (mm)	1150**	1150**	1310
Angle of approach	27	31	31
Angle of departure	28**	31**	25
Load space - length (mm)			1485
Load space - width (mm)			1390
Load space - height (mm)			435
Gross Vehicle Mass (GVM <sup>^</sup> ) (kg)	2730	2860	2860
Tare mass (kg) <sup>‡</sup> including options	1360 <sup>‡</sup>	1559 <sup>‡</sup>	1842 <sup>‡</sup>
Carrying capacity (kg) (excluding tray on cab chassis)	1370	1301	1018

Rated towing capacity <sup>†</sup>			
Trailer with brakes (kg)	1500	2800	2800
Trailer without brakes (kg)	750	750	750
Towball download (kg)	See table	See table	See table

Fuel			
Recommended fuel type - Diesel	●	●	●
Fuel tank capacity (litres)	75	75	75
Fuel consumption l/100km (combined ADR 81/02) <sup>‡</sup> (manual)	7.3	9.1	9.2

Mechanical			
Limited Slip Differential (LSD)	●	●	●
Front brakes - ventilated discs	●	●	●
Rear brakes - drum	●	●	●
Front suspension - double wishbone with stabiliser bar	●	●	●
Rear suspension - leaf spring	●	●	●
Power steering	●	●	●

Wheels/Tyres	4x2 DX <sup>†</sup> Single Cab Chassis	4x4 DX <sup>†</sup> Single Cab Chassis	4x4 ST-R Dual Cab Ute
15x5½ JJ steel wheels with 195/R15 tyres	●		
16x6J steel wheels with 205/R16 tyres		●	
16x7JJ alloy wheels with 265/70R16 tyres			●
Full size steel spare wheel	●	●	●

Interior			
Air-conditioning	●	●	●
Seating capacity	3	3	5
Cloth seat trim	●	●	Sport
Height adjustable front headrests			●
Power windows	●	●	●
Central locking	●	●	●
4 spoke steering wheel	●	●	●
Tilt adjustable steering	●	●	●
6 CD in-dash auto changer with AM/FM radio and 2 speakers			●
Single CD player with AM/FM radio and 2 speakers	●	●	
Bluetooth <sup>®</sup> handsfree phone system	●	●	●
Auxiliary MP3 player input jack	●	●	●
iPod <sup>™</sup> connectivity (or USB storage device) via USB connection	●	●	●
12v power socket	●	●	●
Glovebox	●	●	●
Front door pockets	●	●	●
Centre console with lid			●
Assist grip (front passenger side only)	●	●	●
Courtesy light	●	●	●
Front map lights			●
Floor trim	Vinyl	Vinyl	Carpet

Instrumentation			
Speedometer, tachometer and dual trip meters	●	●	●
Digital clock	●	●	●
4WD indicator		●	●
Fuel/water temperature gauges and low fuel warning light	●	●	●
Distance to next service and engine oil level indicator			●
Glow indicator light	●	●	●

Safety			
Driver and front passenger front-impact SRS airbags	●	●	●
Anti-lock Braking System (ABS)	●	●	●
Front seatbelt pretensioners	●	●	●
3 point Emergency Locking Retractor (ELR) seatbelts	2 (Driver and left passenger)	2 (Driver and left passenger)	4 (Excludes rear centre passenger)
Side intrusion beams	●	●	●
Child safety locks			●
Flame retardant interior trim	●	●	●
Fuel tank rollover valve	●	●	●
Load sensing valve	●	●	●
Rear window demister			●
Day/night rear view mirror	●	●	●

Exterior	4x2 DX <sup>†</sup> Single Cab Chassis	4x4 DX <sup>†</sup> Single Cab Chassis	4x4 ST-R Dual Cab Ute
Alloy sports bar and side steps			●
Halogen headlights	●	●	●
Front bumper	Black	Black	Body colour
Over-fender flares		Black	Body colour
Rear chrome step bumper			●
Front mud flaps	●	●	●
Rear mud flaps			●
2 speed/intermittent windscreen wipers	●	●	●
Power mirrors			●
Door mirrors	Black	Black	Chrome
Lockable fuel lid	●	●	●
Front towing hooks	●	●	●
Antenna	●	●	●
Chrome grille surround			●
Load restraint hooks (4)			●

Colours			
Brilliant Silver	P	P	P
Polar White	S	S	S
Cosmic Black	S	S	S
Burning Red	S	S	
Deep Sapphire			P

Warranty			
3 year / 100,000kms	●	●	●
3 year 24-Hour Roadside Assistance Program	●	●	●
Genuine Nissan Extended Warranty	Opt	Opt	Opt

Opt    Optional     Not available     Standard

S    Standard paint     P    Premium paint is available at extra cost

<sup>†</sup> Note that Single Cab Chassis models do not come with tray.

\*\*Excludes tray.

\*Tare mass = unladen mass of vehicle with 10 litres of fuel, excludes tray body for Single Cab Chassis vehicles.

<sup>††</sup>Towing capacity is subject to towbar/towball capacity. The capacity may be reduced if a non genuine Nissan towbar is fitted. The permitted download is directly related to the laden mass of vehicle. At the maximum laden mass of the vehicle (GVM<sup>^</sup>), the maximum towball download is 80kgs.

<sup>‡</sup> Figures have been calculated in accordance with ADR81/02. Actual fuel consumption will vary depending on driving conditions, driver behaviour, the condition of your vehicle and the accessories fitted.

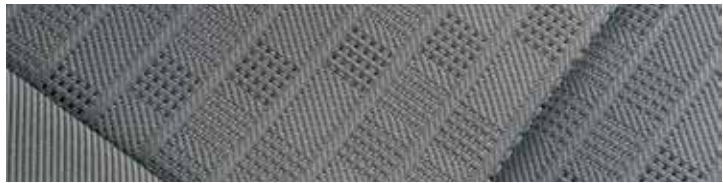
<sup>^</sup> GVM = Gross Vehicle Mass. GVM includes the driver, passengers, full fuel tank and luggage.

<sup>™</sup> iPod is a registered trade mark of Apple Inc.

		Single Cab	Dual Cab
<b>Towball download</b>	<b>Loaded Vehicle Mass</b>		
80kg	GVM <sup>^</sup> (All models)	GVM <sup>^</sup>	GVM <sup>^</sup>
150kg	Reduced loaded vehicle mass below GVM <sup>^</sup> by	40kg	70kg
200kg	Reduced loaded vehicle mass below GVM <sup>^</sup> by	110kg	125kg
250kg	Reduced loaded vehicle mass below GVM <sup>^</sup> by	180kg	170kg

GVM = Gross Vehicle Mass

If the loaded vehicle mass is reduced as shown in the table, the towball download can be increased correspondingly. Accordingly, if the laden mass is 170kgs less than the GVM<sup>^</sup> (Dual Cab models), a towball download of 250kgs is approved. Different trailer types and different trailer manufacturers have varying towball downloads. The customer will need to contact the trailer manufacturer for information as to the download. Nissan is not able to make any recommendation on the use or suitability of load-levelling or weight distribution devices to be fitted to the vehicle. Customers should contact the manufacturers of these devices for further information.



DX 4x2 Interior.



DX 4x4 Interior.



ST-R Interior.

  
**our comprehensive ownership support**



**FINANCIAL SERVICES**

For more information please visit [nissan.com.au/owners](http://nissan.com.au/owners), ask your Nissan Dealer or phone 1800 035 035 during normal business hours.

Follow us: @Nissan\_Aus

Like us: Nissan Australia

Check out: NissanAustralia Channel



All illustrations, information and specifications presented and referred to in this brochure were correct at the time this brochure was approved for printing. The colours in the photographs may vary from actual colours. However, Nissan Motor Co (Australia) Pty. Ltd. reserves the right, subject to the laws of Australia and/or the regulations of any competent authority which may apply from time to time, at its discretion at anytime and without prior notice to discontinue or change the models, features, specifications, designs and prices of the products referred to in this brochure and any optional equipment therefore without incurring any liability whatsoever to any purchaser or prospective purchaser of any such products. Some of the items referred to herein are optional at extra cost. Some options may be required in combination with other options. Always consult your Nissan Dealer for the latest information on models, specifications, features, prices, options and availability. Nissan Motor Co (Australia) Pty. Ltd. ACN 004 663 156. Updated July 2013. NAD0063





**Innovation  
that excites**

[nissan.com.au](http://nissan.com.au)