

# RENAULT SPORT CLIO R.S. 200



**RENAULT SPORT**







# THE CLIO R.S. GOES FROM STRENGTH TO STRENGTH

ON THE BACK OF RESOUNDING ACCLAIM FOR THE FOURTH GENERATION RENAULT CLIO COMES THE CLIO R.S. 200 EDC. THIS EXHILARATING FIVE-DOOR HOT HATCH BENEFITS FROM THE EXPERTISE AND TECHNOLOGY RENAULT SPORT HAS FORGED OVER DECADES OF MOTORSPORT SUCCESS.

The Clio R.S. 200 EDC combines heart-racing sports performance with everyday driving enjoyment. It introduces the thrilling Renault Sport-developed 200hp 1.6L Turbo engine and Efficient Dual Clutch transmission. The result is an enjoyable everyday drive, with the power and renowned handling you expect from a performance icon.

The Clio R.S. 200 EDC delivers more for less. It is the breathtakingly fun hot hatch with all the performance technology and authentic Renault Sport driving experience you want, and a price tag you might not expect.

The Clio R.S. builds on its predecessors' class-leading chassis dynamics and power to weight ratio revered by driving enthusiasts around the world, marrying these iconic performance foundations with new levels of technological innovation.

It is available with a choice of Sport chassis for responsive handling and on-road enjoyment, or Renault Sport's premium Cup chassis, which provides a lower ride height, extra stiffness in the springs and dampers, and enhanced handling for even purer sports driving.

# DISTINCTIVE BY DESIGN



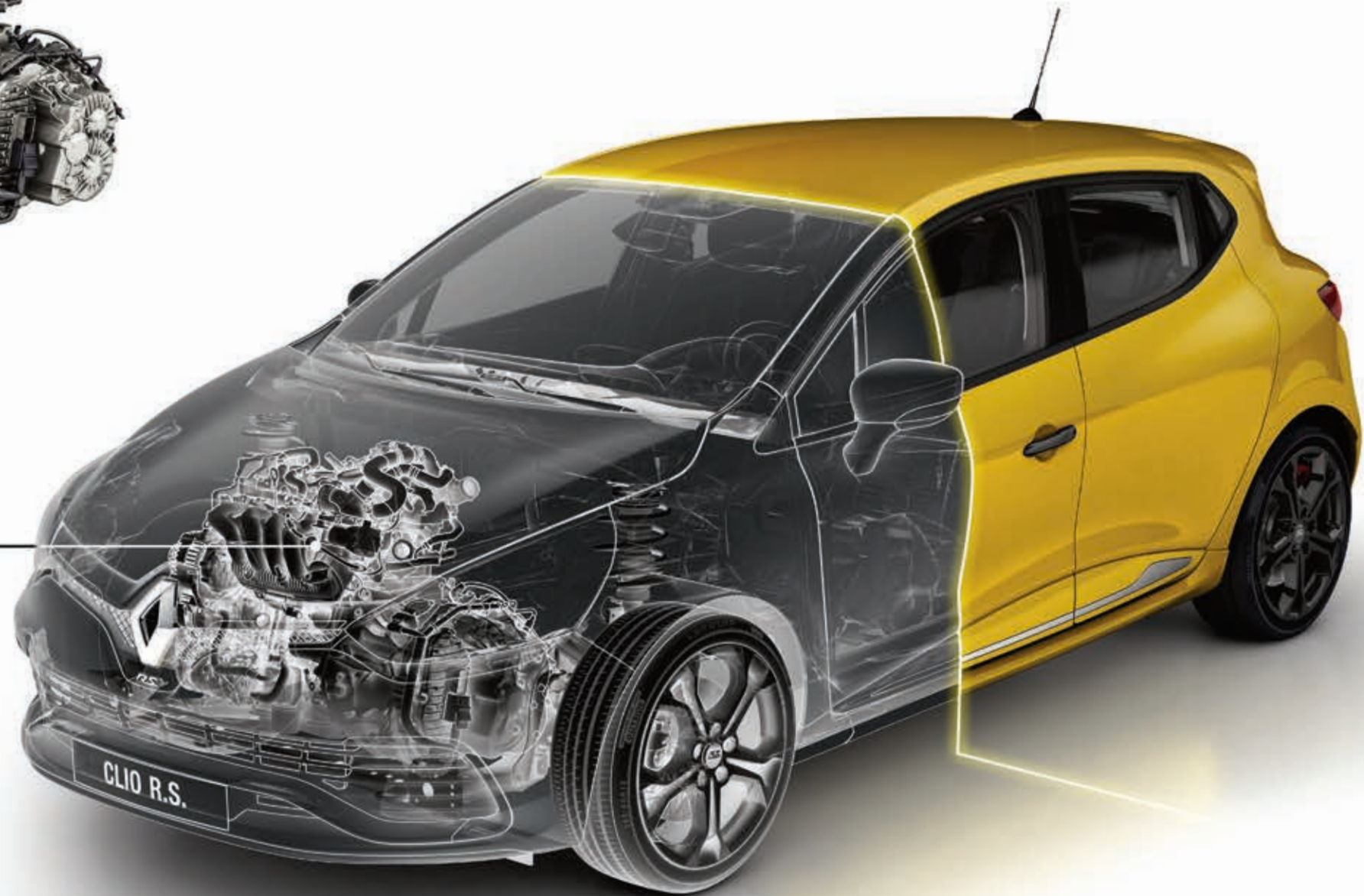
THE CLIO R.S. 200 EDC COMBINES RENAULT'S BOLD NEW DESIGN IDENTITY WITH SLEEK LINES AND DYNAMIC SPORTS STYLING. RENAULT SPORT CREDENTIALS ARE OBVIOUS THROUGHOUT, FROM ITS LIGHTWEIGHT ALLOY WHEELS TO ITS PROMINENT R.S. BADGING.

The interior of the Clio R.S. features Renault Sport kick plates, aluminium foot pedals and innovative column-mounted paddle shifters inspired by Renault's development of F1® race cars which allow you greater speed and control over gear shifts. The gloss black centre console is highlighted with satin red inserts housing the 7" touchscreen navigation system. The dashboard itself is made from soft touch carbon with a Renault Sport logo inset. The R.S. badged steering wheel is wrapped in leather with sporty double red stitching.

On the seats, the Sport and Cup models proudly display the Renault Sport logo on the headrests and are covered in dark carbon cloth upholstery. The front seats of the Sport Premium and Cup Premium boast the extra luxury of dark carbon leather and heating function.

On the outside, the Clio R.S. is clearly badged with its hot hatch origins. From the rear, admire the Renault Sport rear spoiler, rear fog lights, privacy glass, R.S. badging and dual chrome rectangular exhaust finishers. From the front, you'll notice the eye-catching LED daytime running lights mounted in the bumper, which also features an aerodynamic F1® style front blade and Renault Sport badging. The Sport and Sport Premium models have 17" Tibor alloy wheels, or 18" Radicale alloy wheels on the Cup and Cup Premium – both come fitted with asymmetrical tyres.

# POWER YOU CONTROL



**EXCLUSIVE TO THE RENAULT SPORT CLIO R.S. 200 EDC IS THE 1.6L TURBOCHARGED ENGINE WITH DOUBLE VVT THAT PROVIDES BOTH EXTREME PERFORMANCE AND LOW CO<sub>2</sub> EMISSIONS.**

The combination of high-performance features and refined technology developed through Renault Sport's decades of F1® expertise has resulted in an impressive offering from the new Clio R.S. of 147kW of power at 6000rpm and 240Nm of torque at 1750rpm.

The EDC (Efficient Dual Clutch) is a first on a Renault Sport vehicle, and is just one of the ways the Clio R.S. creates a highly efficient experience. The EDC provides swift automatic gear changes in the blink of an eye, making driving in heavy traffic a whole lot easier. Or feel free to let loose and control the gear changes manually using either the leather-wrapped gear lever or the column-mounted paddle shifters inspired by Renault's years of F1® success.

You'll enjoy the benefits of more F1® technology under the bonnet. The turbocharged direct injection with dual camshaft timing actuators and DLC (diamond-like carbon) lifters use technology derived from F1®. The resulting reduced inertia and Electronic Smart Management enables the vehicle to achieve 0 to 100km/h in 6.7 seconds.

Set out confidently with the Clio R.S. Launch Control, which limits wheel spin during fast take-offs. The spoiler has also been increased in length by 50mm, contributing 20% of the vehicle's downforce without increasing drag.



# CAN YOU HANDLE IT?

THE CLIO R.S. 200 EDC IS A SHINING EXAMPLE OF RENAULT SPORT'S PHILOSOPHY OF OPTIMAL PERFORMANCE, CONTROL AND HANDLING BUILT INTO EVERY ONE OF ITS ELITE HOT HATCHES.

The renowned Cup chassis continues its legendary reputation in the Clio R.S. For pure sports driving, the Cup chassis has been developed with extra stiff springs and dampers for increased control, a lower ride height for a more streamlined and aerodynamic movement and improved handling.

For a slightly more laid-back option, the Clio R.S. is also available with a Sport chassis providing smooth response and a beautiful ride.

Renault Sport has made its name on developing vehicles that outperform and outclass the competition. With larger discs and front brakes, the Clio R.S. provides stable and powerful breaking under intensive use and reduced brake pedal travel.

The R.S. Drive modes, standard across all Clio R.S. models, allow the driver to control the sports handling and performance of the vehicle in three modes – Normal, Sport and Race. In Race mode the Electronic Stability Control is completely disconnected and the raw power of the Clio R.S. is unleashed.

The Renault Sport electronic limited slip differential improves traction and limits vehicle skidding. When the system detects that a wheel is about to lose control, it applies the brakes to supply more torque to the wheel with greater adhesion. This makes it easier for the driver to retain traction and control when accelerating through tight corners.

# R.S. MONITOR 2.0



DRIVING PERFORMANCE INFORMATION REACHES NEW HEIGHTS IN THE CLIO R.S. 200 EDC. THE LATEST ON-BOARD TELEMETRY SYSTEM, R.S. MONITOR 2.0, SHOWS YOUR REAL TIME DRIVING DATA AND INTEGRATES WITH AN ONLINE EXPERIENCE YOU'D EXPECT FROM THE LATEST SUPERCARS.

This advanced driving data technology displays your real-time torque and power outputs, G-force diagrams, wheel traction figures, efficiency and much more on the hi-definition 7" touchscreen.

The system can save your driving data simply by USB which you can then upload directly to your account on the RenaultSport.com website. On the site, you can replay your stats and laps, analyse your data and create public or private communities with fellow enthusiasts. Using the mapping functions you can upload your own maps or create courses within your local area. You can even share your results with other driving enthusiasts via social media.

# EXTERIOR



- 1. Rear privacy glass\*
- 2. R.S. badging
- 3. L.E.D. daytime running lights
- 4. F1® blade in front bumper
- 5. Gloss black electric door mirrors
- 6. Double optic headlights
- 7. 18" Radicale alloy wheels
- 8. R.S. diffuser and dual chrome exhaust finishers
- 9. R.S. spoiler\*

\*Optional grey checked roof decal

# INTERIOR



- 1. Red seat belts
- 2. R.S. leather heated seats with red stitching and R.S. logo^
- 3. R.S. upholstery in dark carbon cloth with red stitching and R.S. logo
- 4. Aluminium foot pedals
- 5. Centre console – gloss black with satin red dashboard inserts and 7" touchscreen
- 6. Dashboard – soft touch dark carbon with R.S. logo

^Sport Premium and Cup Premium only



# ACCESSORIES



1. Alarm kit (8201275125)
2. Boot protection - inner lining (8201361213)
3. Car cover (7711428236)
4. Boot tray - moulded (8201321361)
5. Grey boot mat (8201321290)
6. Weathershield (7711574780)
7. Parking sensor kit - rear (8201373014)

# ACCESSORIES



1. Boot net - floor (7711422533)
2. Boot net - seat back (7711227502)
3. Boot separator (8201321369)
4. Cup and lighter kit (8201375535)
5. Roof bars (8201321618)
6. Roof pod - 480 litres (7711575525)
7. Ski rack (7711420778 - 4 sets of skis / 7711420779 - 6 sets of skis)
8. Tablet support (B8181PAD00AU)

# SPORT / CUP



## KEY FEATURES

- Dual front and side airbags plus head and chest side airbags
- Anti-lock Braking System, Emergency Brake Assist (EBA), Electronic Brakeforce Distribution (EBD), Anti-Slip Regulation (ASR), Hill Start Assist (HSA), Electronic Stability Control (ESC)
- Automatic headlights and windscreen wipers
- Hands-free entry and engine start
- Manual air conditioning
- Front LED daytime running lights
- Privacy glass on rear windows and tailgate
- Renault Sport dark carbon cloth upholstery with red stitching and R.S. logo on front headrests
- Renault Sport rear spoiler
- Front bumper with F1® style blade
- Hidden rear exterior door handles
- R.S. badging on steering wheel, boot and front grille
- Rear diffuser with dual chrome rectangular exhaust finishers

- Renault Media Navigation System with 7" touchscreen
- Cruise control with speed limiter
- Paddle shift with multi-gear change down function
- R.S. Drive with three modes – Normal, Sport or Race
- Three child seat anchorage points for rear seats
- Bluetooth® phone pairing with audio streaming
- 4 speaker audio system by Arkamys with AM/FM, MP3, auxiliary and USB input with fingertip controls and Renault Bass Reflex system



DARK CARBON UPHOLSTERY



18" RADICALE ALLOYS\*

## SPORT KEY FEATURES

- Sports Chassis
- 17" Tibor alloy wheels

## CUP KEY FEATURES

- Cup Chassis
- 18" Radicale alloy wheels with front and rear red brake calipers



17" TIBOR ALLOYS\*

\*Available on the Sport and Sport Premium  
^Available on the Cup and Cup Premium

# SPORT PREMIUM / CUP PREMIUM



## CUP PREMIUM KEY FEATURES

All of the features of the Cup model plus:

- R-Link Enhanced Satellite Navigation system with 7" touchscreen, turn by turn instructions, upgraded interface, R-Sound, voice recognition and customisable home page
- 4 speaker, 2 tweeter audio system by Arkamys with 3D sound, AM/FM, MP3, auxiliary and USB input with fingertip controls and Renault Bass Reflex system
- R.S. Monitor 2.0 on-board telemetry system
- Rear parking sensors with rear camera
- Climate control air conditioning
- Dark carbon leather upholstery with heated Renault Sport front seats

## SPORT PREMIUM KEY FEATURES

All of the features of the Sport model plus:

- R-Link Enhanced Satellite Navigation system with 7" touchscreen, turn by turn instructions, upgraded interface, R-Sound, voice recognition and customisable home page
- 4 speaker, 2 tweeter audio system by Arkamys with 3D sound, AM/FM, MP3, auxiliary and USB input with fingertip controls and Renault Bass Reflex system
- R.S. Monitor 2.0 on-board telemetry system
- Rear parking sensors with rear camera
- Climate control air conditioning
- Dark carbon leather upholstery with heated Renault Sport front seats



DARK CARBON LEATHER SEATS



18" RADICALE ALLOYS\*



17" TIBOR ALLOYS\*

\*Available on the Sport and Sport Premium  
^Available on the Cup and Cup Premium

# OVERVIEW

## SPECIFICATIONS

	Sport	Cup	Sport Premium	Cup Premium
Body type	Hatch			
Seating capacity	5			
<b>ENGINE</b>				
Type	M5Mt 1.6 Petrol Turbo			
Capacity (cc)	1618			
Number of cylinders/valves	4 / 16			
Bore x stroke (mm)	79.7 x 81.1			
Compression ratio	9.5 : 1			
Maximum power (kW @ rpm)	147 @ 6000			
Maximum torque (Nm @ rpm)	240 @ 1750			
Fuel type (recommended)	Unleaded 95 (98 RON rec.)			
Fuel injection type	Turbocharged direct injection			
<b>TRANSMISSION</b>				
Type	EDC automatic gearbox			
Driven wheels	Front			
Speeds at 1000 rpm in 1st gear	7.29	7.34	7.29	7.34
2nd gear	11.75	11.84	11.75	11.84
3rd gear	17.89	18.01	17.89	18.01
4th gear	25.15	25.32	25.15	25.32
5th gear	32.94	33.17	32.94	33.17
6th gear	40.66	40.94	40.66	40.94
<b>STEERING</b>				
Type	Electric variable			
Turning circle between kerbs (m)	10.9			
Turns lock-to-lock	2.67			
<b>WHEELS</b>				
Wheels (inches)	17"	18"	17"	18"
Tyres	205/45 R 17	205/40 R 18	205/45 R 17	205/40 R 18
<b>BRAKING</b>				
Front braking system (diameter x thickness)	320 x 28			
Rear braking system (diameter x thickness)	260 x 8			
Front suspension	MacPherson strut			
Rear suspension	Torsion beam axle			
<b>PERFORMANCE</b>				
Max. speed (km/h)	230			
0-100 km/h (seconds)	6.7			
<b>FUEL CONSUMPTION<sup>^</sup></b>				
Emission standards	Euro 5			
Combined cycle (L/100km)	6.3			
CO <sub>2</sub> emissions (g/km)	144			
Extra urban cycle (L/100km)	5.1			
Urban cycle (L/100km)	8.1			
<b>CAPACITY</b>				
Fuel tank (litres)	45			
<b>WEIGHTS</b>				
Kerb weight (kg)	1218			
<b>VOLUME</b>				
Boot volume (litres)	300			
Maximum boot volume with rear seats folded down (up to roof)	1146			

## FEATURES

SPEC AVAILABLE	Sport	Cup	Sport Premium	Cup Premium
<b>SAFETY AND SECURITY</b>				
Driver and front passenger airbags	•	•	•	•
Driver and front passenger head and chest side airbag	•	•	•	•
Anti-lock Braking System (ABS)	•	•	•	•
Emergency Brake Assist (EBA)	•	•	•	•
Emergency warning lights activated under heavy braking	•	•	•	•
Electronic Brake-force Distribution (EBD)	•	•	•	•
Electronic Stability Control (ESC)	•	•	•	•
Anti-Slip Regulation (ASR)	•	•	•	•
Hill Start Assist (HSA)	•	•	•	•
<b>Lighting</b>				
Automatic dusk sensing headlights	•	•	•	•
"See me home" function interior cabin lights	•	•	•	•
L.E.D daytime running lights mounted in front bumper	•	•	•	•
Rear fog light	•	•	•	•
Manual height adjustable headlights	•	•	•	•
<b>Parking aids</b>				
Rear parking sensors	0	0	•	•
Rear view camera	-	-	•	•
Day and night rear view mirror	•	•	•	•
<b>Safety Features</b>				
Driver and front passenger seat belt warning light and tone	•	•	•	•
Rear seat belt warning (displayed on trip computer)	•	•	•	•
One-touch door locking	•	•	•	•
Height adjustable front seatbelts with load limiter	•	•	•	•
Height adjustable front headrests	•	•	•	•
3 Height adjustable rear headrests	•	•	•	•
Turn indicator lights on door mirrors with highway mode	•	•	•	•
3 three-point rear seatbelts	•	•	•	•
Two rear seats with ISOFIX 3-point attachment system	•	•	•	•
3 child seat anchorage points for rear seats	•	•	•	•
Cruise control with speed limiter	•	•	•	•
Child safety locks on rear doors	•	•	•	•
Tyre inflation kit	•	•	•	•
<b>Security Features</b>				
Engine immobiliser	•	•	•	•
Renault Anti-Intruder Device (R.A.I.D) - automatic locking of doors while driving (activated once above 30km/h)	•	•	•	•
Remote central locking with Renault Smart Key Card	•	•	•	•

SPEC AVAILABLE	Sport	Cup	Sport Premium	Cup Premium
<b>Driving Dynamics</b>				
Paddle shift with multi-gear change down function	•	•	•	•
Launch control	•	•	•	•
Gear shift indicator	•	•	•	•
Sport chassis	•	-	•	-
Cup chassis	-	•	-	•
R.S. Drive with three modes - Normal, Sport or Race (ESC is disabled in race mode)*	•	•	•	•
R.S. Diff <sup>^</sup> electronic LSD	•	•	•	•
Front and rear red brake calipers	-	•	-	•
<b>INTERIOR FEATURES</b>				
<b>Comfort</b>				
Hands-free entry and engine start	•	•	•	•
Manual air conditioning	•	•	-	-
Climate control air conditioning	0	0	•	•
Height and reach adjustable steering wheel	•	•	•	•
Digital speedometer	•	•	•	•
<b>Convenience</b>				
12 volt socket	•	•	•	•
Automatic windscreen wipers with rain sensor	•	•	•	•
Electric front and rear windows with driver anti-pinch function and one touch control	•	•	•	•
Multi-function trip computer	•	•	•	•
Storage - front and rear side doors	•	•	•	•
Storage - open storage in dashboard	•	•	•	•
Storage - back seat pockets	-	-	•	•
Lighting (front ceiling, boot)	•	•	•	•
<b>Entertainment</b>				
Bluetooth <sup>®</sup> phone pairing with audio streaming**	•	•	•	•
4 speaker audio system by Arkamys with AM/FM, MP3, auxiliary and USB input with fingertip controls and Renault Bass Reflex system	•	•	-	-
4 speaker, 2 tweeter audio system by Arkamys with 3D sound, AM/FM, MP3, auxiliary and USB input with fingertip controls and Renault Bass Reflex system	-	-	•	•
Renault media navigation system with 7" touchscreen and turn by turn instructions	•	•	-	-
R-Link Enhanced Satellite Navigation system with 7" touchscreen, turn by turn instructions, upgraded interface, R-Sound, voice recognition and customisable home page	-	-	•	•
Renault Sport (R.S.) Monitor 2.0	-	-	•	•
<b>Seating</b>				
Manual height adjustable driver seat	•	•	•	•
60:40 split folding rear seats	•	•	•	•
Red seatbelts	•	•	•	•
Heated front seats	-	-	•	•

SPEC AVAILABLE	Sport	Cup	Sport Premium	Cup Premium
<b>Styling</b>				
Front sill kick plate with Renault Sport logo	•	•	•	•
Aluminium accelerator and brake pedals	•	•	•	•
Gloss black centre console	•	•	•	•
Satin red interior trim	•	•	•	•
Soft touch, dark carbon dashboard with Renault Sport logo	•	•	•	•
Leather wrapped handbrake with red stitching	•	•	•	•
Front speakers with Bass Reflex logo	•	•	•	•
Chrome gear stick insert	•	•	•	•
Leather wrapped steering wheel with double red stitching, red insert and R.S. badge	•	•	•	•
Renault Sport dark carbon cloth upholstery with red stitching and R.S. logo on front headrests	•	•	-	-
Renault Sport dark carbon leather upholstery with red stitching and R.S. logo on front headrests	-	-	•	•
<b>EXTERIOR FEATURES</b>				
<b>Styling</b>				
Renault Sport rear spoiler	•	•	•	•
Body coloured front bumper with satin grey F1 <sup>®</sup> style blade	•	•	•	•
Renault Sport badge on boot lid	•	•	•	•
R.S. badge under front grille	•	•	•	•
Gloss black door mirrors	•	•	•	•
Body coloured side bumpers with satin grey strip	•	•	•	•
Electric heated folding door mirrors	•	•	•	•
Body coloured door handles (gloss black on liquid yellow paint)	•	•	•	•
Hidden rear exterior door handles	•	•	•	•
Satin grey rear diffuser	•	•	•	•
Dual chrome rectangular exhaust finisher	•	•	•	•
Rear privacy glass	•	•	•	•
Front headlights with black surrounds and white detail	•	•	•	•
Grey checked roof decal <sup>#</sup>	0	0	0	0
17" Tibor alloy wheels	•	-	•	-
18" Radicale alloy wheels	-	•	-	•
18" Silver Radicale alloy wheels	0	-	0	-
<b>WARRANTY</b>				
5-Year Unlimited kms with 24 Hour Roadside Assistance				

- Standard
- 0 Option
- Not available

\*R.S Drive accessible only when Cruise Control is inactive. \*\*Bluetooth compatibility may vary depending on phone. #Decals unavailable with Mercury Grey paint. ^Vehicle tested in accordance with ADR 81/02 based on combined cycle (city/highway). Actual fuel consumption and CO<sub>2</sub> emissions depend on factors such as traffic conditions, vehicle condition and how you drive.

# COLOURS



GLACIER WHITE (369) S



LIQUID YELLOW (J37) R



MERCURY GREY (D69) M

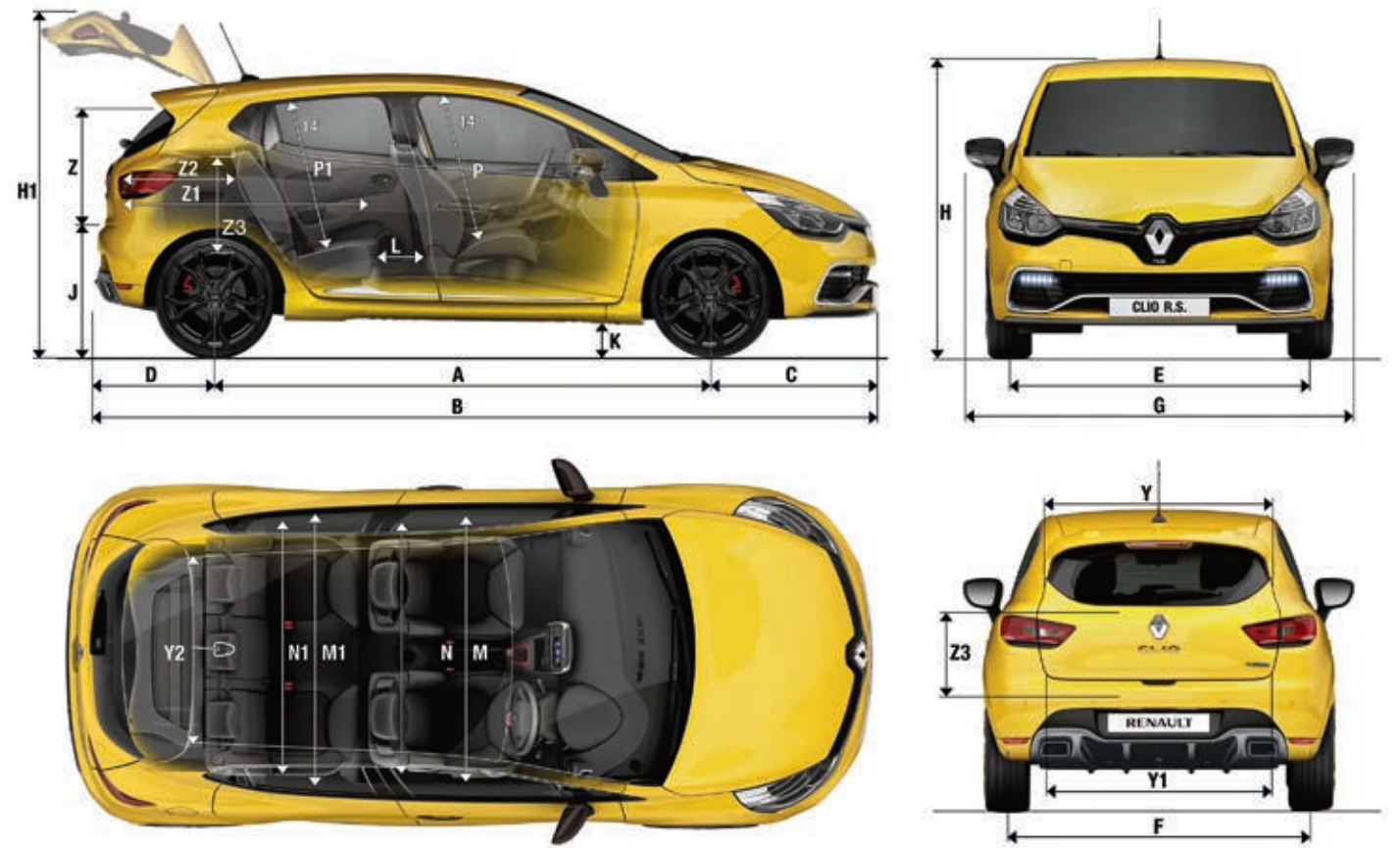


FLAME RED (NNP) M



DEEP BLACK (GNA) M

# DIMENSIONS



A	Wheelbase	2589	M	Interior elbow cabin width - front	1363
B	Overall length	4090	M1	Interior elbow cabin width - rear	1378
C	Front overhang	864	N	Interior shoulder cabin width - front	1370
D	Rear overhang	634	N1	Interior shoulder cabin width - rear	1307
E	Front track	1504	P	Front seat headroom measured at 14 degrees	880
F	Rear track	1500	P1	Rear seat headroom measured at 14 degrees	847
G	Overall width	1732	Y	Upper boot entry width	1038
G	Overall width (including door mirrors)	1945	Y1	Lower boot entry width	905
H	Unladen height	1448	Y2	Interior width between wheel arches	1011
H1	Unladen platform height	1939	Z	Rear entry height	550
J	Boot sill height	733	Z1	Load area length with rear seats folded	1388
K	Running clearance	118	Z2	Load area length behind rear seats	649
L	Knee room (rear passengers)	140	Z3	Height up to the parcel shelf	558

M Metallic  
S Solid  
R Renault Sport Signature

Measurements in millimetres

# KEY FEATURES

FEATURE AVAILABILITY VARIES PER MODEL



## MEDIA NAVIGATION

The Clio R.S. 200 EDC Sport and Cup models allow effortless navigation through the advanced 7" touch-screen integration satellite navigation systems. The touchscreen display also allows direct control of your audio and R.S. Monitor 2.0 functions in the Premium models.



## R-LINK ENHANCED SATELLITE NAVIGATION SYSTEM

The Sport Premium and Cup Premium variants of the Clio R.S. also feature Renault's integrated multimedia system – R-Link. This innovative technology provides an impressive range of features, including the innovative R.S. Monitor 2.0, voice control of the applications and more. The unique R-Sound functionality allows you to change the note of the engine to sound like you're driving other high-performance vehicles.



## R.S. MONITOR 2.0

The R.S. Monitor 2.0 on-board telemetry system as part of the R-Link system on the Sport Premium and Cup Premium tracks and records your driving performance information in real time. Data displayed includes acceleration, G-forces, temperatures, wheelspin and more. The data-logging option allows capture of this information to upload online, where you can join communities and create local maps and courses to drive.



## INTERIOR TRIM

Because the Clio R.S. has been designed to provide exceptional performance in everyday driving environments, great care has been taken in creating a comfortable, sophisticated cabin. Renault Sport elements are visible throughout, from the leather-wrapped R.S. steering wheel and gear lever to the soft-touch carbon dash with red inserts and satin red trim around the centre console. R.S. branded door sill kick plates protect your vehicle and look great too.



## R.S. DRIVE

R.S. Drive modifies the transmission and engine mapping and adjusts the level of intervention from the stability control and traction control systems. Switch between three modes – Normal, Sport and Race – each offering quicker gear changes and more involved power steering.



## PREMIUM AUDIO SYSTEM

Your favourite music sounds even better on the premium Arkamys audio system with 4 speakers. To ensure excellent acoustics and avoid distortion when your music is turned up loud, the speakers in the front feature Bass Reflex technology. This improves the clarity of your music and ensures better reproduction of low frequencies. Connectivity also includes wireless streaming via Bluetooth®, USB or auxiliary inputs as standard.



## EFFICIENT DUAL CLUTCH (EDC)

A first for Renault Sport, the Clio R.S. 200 EDC features an Efficient Dual Clutch that allows for responsive gear changes while optimising fuel efficiency. Gear changes are automatic and swift, and can be controlled manually via the gear lever or column-mounted paddle shifters.



## COLUMN-MOUNTED PADDLE SHIFTERS

Inspired by the racing cars Renault Sport builds for F1® teams, the Clio R.S. 200 EDC has paddle gear shifters mounted on the steering column, allowing effortless upward and downward gear changes without taking your hands off the steering wheel.



## LAUNCH CONTROL

Engage Launch Control with the vehicle in manual mode to enjoy a sportier take off and improved 0-100km/h times in the Clio R.S. 200 EDC. Launch Control limits wheelspin for faster take off by promoting tyre traction to translate engine torque into extra exhilaration.



## HANDS-FREE ENTRY AND ENGINE START

Keep your keys in your pocket – the Renault Smart Key Card in the Clio R.S. 200 EDC unlocks the doors automatically as you touch the door handle. Simply push a button to start the engine once inside.



## PARKING ASSISTANCE

The Clio R.S. 200 EDC Sport Premium and Cup Premium models have rear parking sensors plus a reversing camera. When reversing or parallel parking, the rear camera view provides greater visibility behind your vehicle and advanced safety for you and those around you.



## BOLD RENAULT BADGING

You couldn't hide the Renault Sport credentials of the Clio R.S. 200 EDC even if you wanted to. The Clio R.S. conveys its motorsport parentage with branding on the rear sill, front grille, door sill kick plates, front seat headrests and dashboard. Not to mention its inimitable road performance.

# DON'T THINK TWICE. RENAULT PEACE OF MIND

WHEN YOU PURCHASE A NEW VEHICLE, YOU WANT TO BE SURE IT WILL GIVE YOU YEARS OF ENJOYABLE, WORRY-FREE MOTORING, BACKED BY A TRUSTED AND RELIABLE BRAND. AND WHEN YOU CHOOSE A RENAULT, THAT'S EXACTLY WHAT YOU'LL GET.



## GENEROUS COMPREHENSIVE WARRANTIES

Renault has been building and racing motor vehicles for more than 100 years, creating a legacy of invention, innovation and a competitive spirit that drives us to excel. The wealth of experience we've gained is reflected in the design, performance and quality of every vehicle we sell.

We're so confident that your new Renault will provide you with many years of reliable and enjoyable driving that we're backing our quality promise with competitive and comprehensive warranty terms on all of our vehicles.

## 24/7 ROADSIDE ASSISTANCE

Renault Roadside Assistance is a service Renault provides to you as a new Renault owner for the period of your new vehicle warranty, regardless of how many kilometres you travel.

You could run out of fuel, lose your car keys, have a flat tyre or an accident just around the corner or a long way from home. Just call 1800 009 008 and we'll arrange the assistance you need to get back on the road. The service is available 24 hours a day, 365 days per year and covers you right across Australia.

## CAPPED PRICE SERVICING

Enjoy lower maintenance costs for your first 3 years behind the wheel of your new vehicle thanks to Renault's Capped Price Servicing program. One flat rate of \$299 covers the cost of all genuine parts, lubricants and labour required for standard scheduled maintenance services.

The Capped Price Service program covers the cost of all genuine parts, lubricants and labour required for standard scheduled maintenance services.

And because you're busy, Renault vehicles are designed to require servicing only once per calendar year – not every six months like many other manufacturers.

## RENAULT SPECIALIST TECHNICIANS

Only Renault authorised dealerships have registered Factory Trained Technicians. Known globally as COTECHS, they're trained by Renault to perform all factory-recommended servicing and repair operations. This ensures your car always receives the quality attention it deserves.

COTECHS use specialised service tools and equipment to ensure your vehicle continues to provide optimum performance, safety, economy and emissions. When you combine this technical expertise with the very best Genuine Renault parts, lubricants and accessories, you can be sure your car is in the safest of hands.

## REPAIR & SERVICE COURTESY CARS

Renault quality extends to our customer service.

To minimise your inconvenience while your vehicle is undergoing maintenance or repairs, our authorised Renault Dealers have low cost loan vehicles ready and waiting for you. Simply book a loan vehicle in advance when you book your Renault in for service with your dealer.

Alternatively, most Renault Dealers offer a drop off service to local destinations or to the nearest public transport.

## GENUINE RENAULT PARTS

Genuine Renault parts, lubricants and accessories are of the highest quality, and specifically designed for Renault vehicles. They are purpose-built to our exacting specifications, guaranteeing fit, function and performance first and every time. They are also covered by our 1-year unlimited kilometres warranty.

Authorised Renault Dealers keep high stock levels of commonly used genuine Renault parts to ensure continuous availability.

## RENAULT DEALER NETWORK – THE BENEFITS

Everywhere, at every stage in your car's life, the Renault dealer network is with you, providing quality service, including:

- Personalised reception and advice.
- The use of only Genuine Renault parts.
- The Renault 1-year parts and labour guarantee for all repairs carried out by a Renault dealership.
- Equipment and tools specially designed for your Renault.
- Our pricing structures are simple, clear and transparent, so you can always have your car serviced or repaired with confidence.



[www.renault.com.au](http://www.renault.com.au)

**5**  
YEARS  
UNLIMITED KM  
WARRANTY

**5**  
YEARS  
ROADSIDE  
ASSIST

**3**  
YEARS  
CAPPED PRICE  
SERVICING

#### OUR QUALITY: YOUR PEACE OF MIND

The most extensive European quality, convenience and expertise promise. When you purchase a new Renault, you can be sure it will give you years of enjoyable, worry-free motoring, backed by a trusted, globally-expanding brand. Like all Renault passenger vehicles, your new Renault is supported by a generous 5-year unlimited kilometre warranty, 24/7 Roadside Assistance and Capped Price Servicing. That's on top of prompt parts supply, specially trained technicians, repair and service courtesy cars, quality Genuine Renault parts and the benefits of a comprehensive global network. Terms and conditions apply. Call our Customer Service Team on 1800 009 008 or view the Terms and Conditions statement at [www.renault.com.au/drivingpeaceofmind](http://www.renault.com.au/drivingpeaceofmind) for details.