

# Technical Bulletin

Division: Automotive  
 Category: Technical

Section Title: Engine  
 TSB No. TS 35 12103

**SUBJECT: SPECIAL COVERAGE EXTENSION FOR SPECIFIC CRACK(S) IN THE CYLINDER HEAD.**

**MODEL(S): GRAND VITARA (JB) WITH 2.4L ENGINE**

**YEAR: 2009 (START OF PRODUCTION THROUGH JULY, 1 2009)**

**CONDITION:** Engine overheating with possible Internal Engine Noise. The engine coolant may leak from the cooling jacket into the Camshaft Housing of the Cylinder Head. There will be no external coolant leak and there will likely be evidence of coolant contamination in the engine oil.

**CAUSE:** Suzuki has determined that certain 2009 Grand Vitara vehicles may develop a crack(s) between cylinder head bolt(s) and casting plug(s).

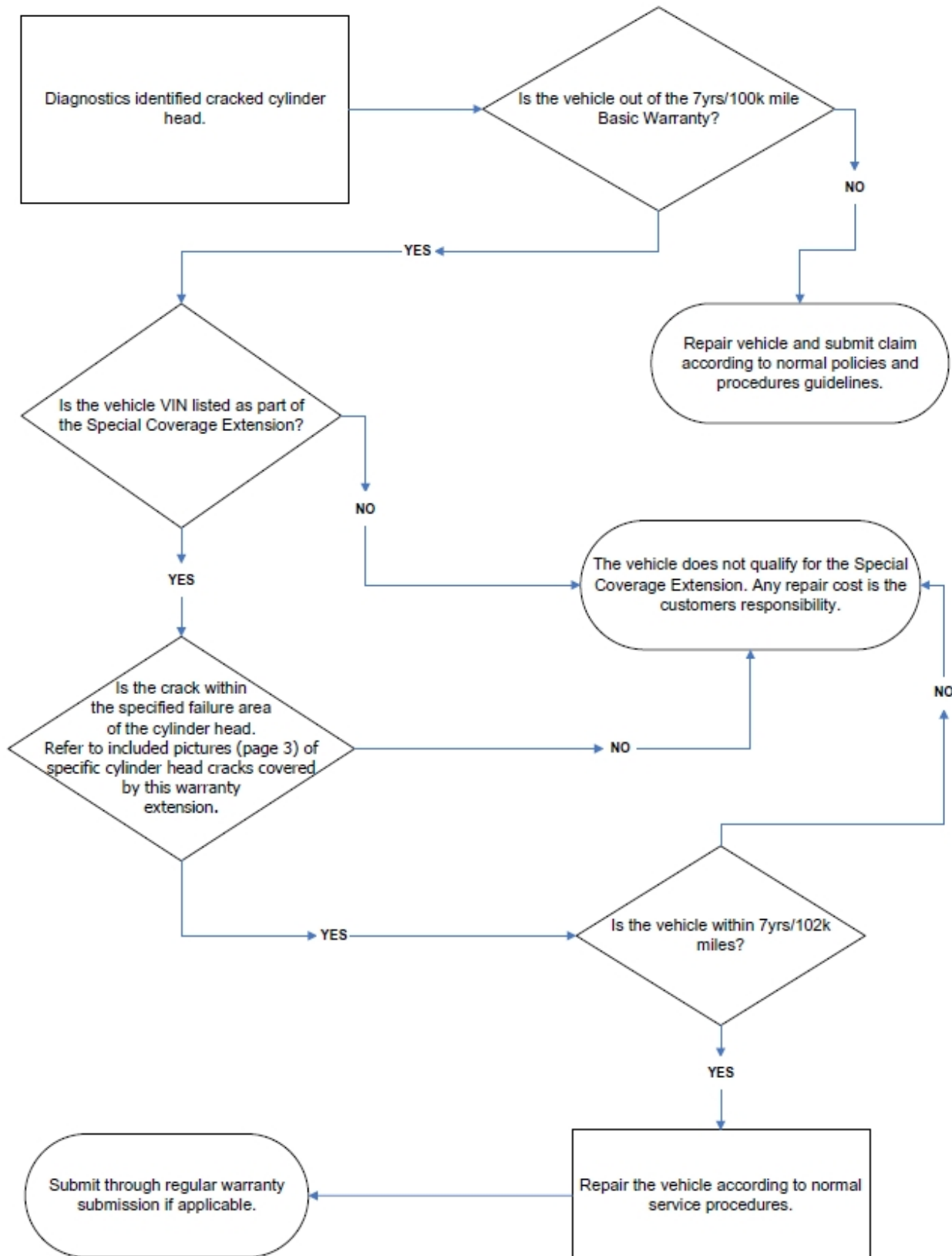
**CORRECTION:** A special coverage extension will apply for vehicles beyond the basic warranty limits. The coverage allows repairs to be made for customers at no charge for parts and labor up to 7 years or 102,000 miles, whichever comes first, from the date of first use, at authorized Suzuki service points. Cracks in locations other than the specified areas of the cylinder head do not qualify for the coverage extension.

Technical Service Department  
 Dealership Circulation – Initial and file:

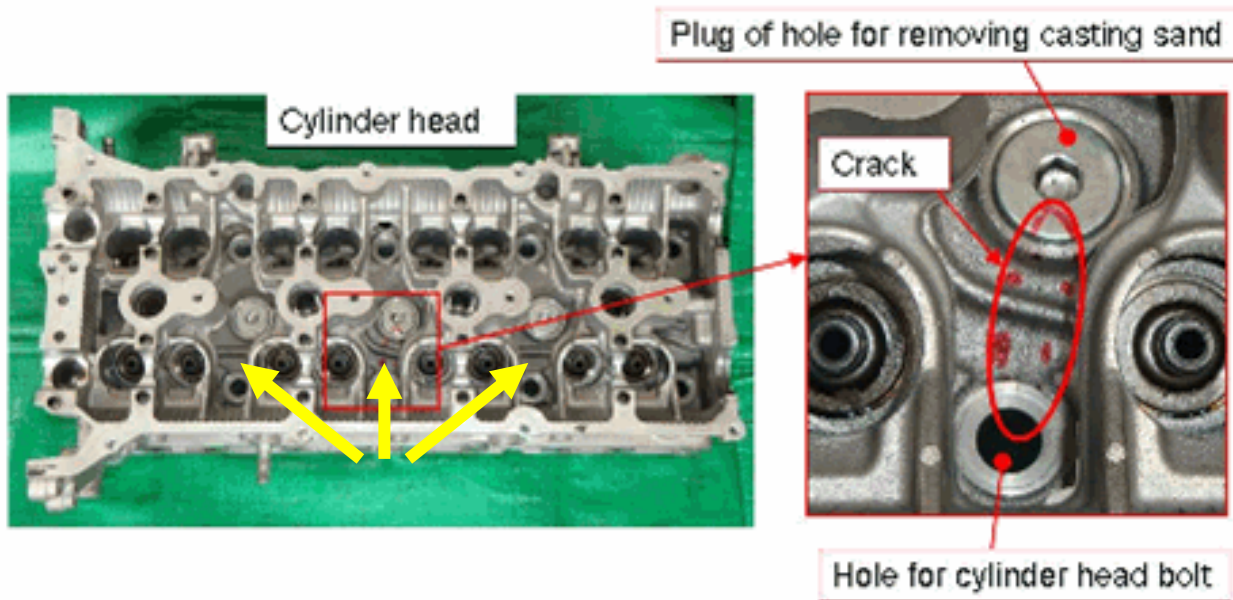
Service Manager	Parts Manager	Service Advisor	Technicians						

Suzuki bulletins are intended for use by professional technicians, NOT a "do-it-yourselfer." They are written to inform these technicians of conditions that may occur on some vehicles, or to provide information that could assist in the proper service of a vehicle. Properly trained technicians have the equipment, tools, safety instructions, and know-how to do a job properly and safely. If a condition is described, DO NOT assume that the bulletin applies to your vehicle, or that your vehicle will have that condition. See your authorized Suzuki service point for information on whether your vehicle may benefit from the information. Suzuki reserves the right to change technical specifications at any time without prior notice.

WORKFLOW



FAILURE AREA



Note:

Cracks located in the 3 areas indicated by arrows may be eligible for coverage.