

HiLux
Unbreakable.



TOYOTA

toyota.com.au



Oh what a feeling!

Built to keep coming back for more.

Wherever you go in Australia, you're sure to see HiLux getting stuck into the hard yakka. With a reputation for being unbreakable, the nation's favourite workhorse is the tough vehicle that thrives on being pushed to the limit.

But it's more than just raw muscle. HiLux is also packed with intelligent technology to help you through sticky moments and tough situations. And when it's time to put down the tools, the creature comforts in HiLux make it your perfect partner around town.

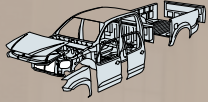
With twenty-three variations to choose from, including both 4x2 and 4x4 configurations, three different engines including a 2.7 litre 4-cylinder, 4.0 litre V6 petrol engine and the turbocharged 3.0 litre diesel engine. Add to this a range of cab variants plus eight different colours. It's a tough choice picking just one.

But while you're spoilt for choice, once you've settled on your HiLux, it'll be yours for a long time.

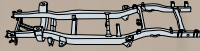


This page: 4x4 SR Double-Cab Pick-up Turbo-diesel in Silver Sky
Front cover: 4x4 SR5 Double-Cab Pick-up Turbo-diesel in Metal Storm

Unbreakable all the way through.



Anti-corrosion steel sheeting



Chassis

Being tough means more than just having thick skin. It also means being built to go the distance.

That's why every HiLux starts with an uncompromising chassis, using smart reinforced crossed-channels to ensure weight is distributed more evenly, allowing you to stack on the loads.

We put plenty of hard work into every HiLux just to make your load a little easier. The body is a clever mix of high tensile and anti-corrosion sheet steel. Purpose built to a rigid design that's ready to take the strain, whether working in city streets or wide-open spaces.



WorkMate 4x2 Single-Cab Cab-Chassis Turbo-diesel in Glacier White shown accessorised with after-sale Dealer fitted General Purpose Aluminium Tray

It looks tough for a reason.

Even with its hard-earned reputation for being unbreakable, HiLux never compromises on style. It effortlessly combines a brash, muscled-up appearance with plenty of appealing features and bold touches that make it the trusted workhorse it is.

Up-front the aggressive full grille flashes a fearless grin while the streamlined clear-lens headlights are ready to make short work of even the darkest night.

All SR5 variants also come with distinctive alloy wheels as standard. At the top of the range, the SR5 4X4 boasts over-fender flares, sports bars and privacy glass for the rear windows.¹ While the power-adjustable chrome mirrors complete the look of a vehicle that's always up for a challenge.



4x4 SR5 Double-Cab Turbo-diesel in Tidal Blue



4x4 SR Double-Cab Pick-up Turbo-diesel in Silver Sky

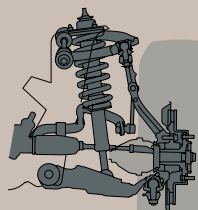
Ready to handle the rough and the smooth.

Work or adventure can take you anywhere. And so can HiLux. Available as a 4x2 or 4x4, with suspension designed to deliver a smooth and stable ride as well as offering dynamic handling and control, whatever the conditions.

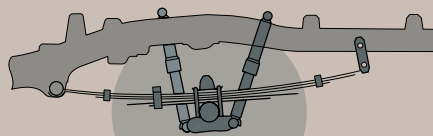
Up front, the double wishbone coil-spring suspension with a stabiliser bar enhances the cornering performance. While the special valve structure on the shock absorbers adapts to any road surface to help ensure a sure-footed and comfortable ride.

The rear suspension features a combination of leaf springs and twin-tube shock absorbers to provide outstanding stability, especially when you're carrying a load.

Handling is further enhanced by double-row, roller-type rear axle bearings and an impressive turning circle of just 11.8m for the 4x2 and 12.4m for the 4x4, helping you out of tight spaces.



Front suspension



Rear suspension



4x4 SR5 Double-Cab Turbo-diesel in Tidal Blue

Take control of any situation.

Every 4x4 HiLux features a range of advanced technological aids to keep you in control when you head off-road or when the going gets tough.

When things start getting slippery, Traction Control (TRC) helps keep you in control, eliminating wheel spin by distributing the power to the tyres with the best grip – even in mud or differing surfaces.

Depending on the variant you choose you can select from a 5-speed manual or 5-speed automatic transmission. The 5-speed automatic transmission comes with Artificial Intelligence (AI) SHIFT Control which shifts gears according to the road condition and the drivers intent by monitoring vehicle and engine data, while on steep inclines or declines the Road Condition Support Control provides a smoother drive by responding to the road conditions and reducing the number of shifts required.

Plus with all terrain tyres on SR models, you'll always have a good grip on the conditions.



4x4 SR5 Double-Cab Pick-up Turbo-diesel in Velocity Red

Tough with a tender touch.

HiLux may be one tough nut outside, but step inside and you'll enjoy welcoming, well-thought-out comfort and space.

The instrument panel is easy-on-the-eye, integrating seamlessly into the dash to create a stylish, unified unit. In the SR and SR5 models, you'll find a Multi Information Display (MID) to show average fuel consumption levels, outside temperature, cruising range and more, plus an Optitron Combimeter that dramatically backlights all essential dials and meters.

Enjoy fingertip control with switches on the steering wheel for the audio on WorkMate models. On SR and SR5 models, the steering wheel also includes switches to control Telephone, Voice Recognition and MID functions.

And when it comes to great sound, every HiLux features an AM/FM display audio system with CD player, including all the USB², AUX and Bluetooth^{®2} connectivity you'd expect. In the SR5 you'll enjoy crisp, six speaker sound and Satellite Navigation³ also comes as standard.



SR5 interior 4x4 Double-Cab Turbo-diesel



Rear seat storage space – SR5 Double-Cab model shown



Climate control – SR5 model shown



Automatic transmission and shift lever – SR5 4x4 model shown



Overhead console – Extra-Cab and Double-Cab models



SR5 4x4 Extra-Cab model shown

Unbreakable outside, inviting within.

Even though HiLux is built to be tough, you'll travel in style with a great range of interior features and options to make it a great way to start or end a hard day.

Even when the heat's on, you'll stay cool in the cab if you choose the optional air conditioning in the WorkMate and SR models, and comfort is assured in the SR5 with climate control fitted as standard.

There's also plenty of space to stash your stuff with large moulded door pockets, as well as handy hidden storage compartments under the rear seats on the Extra-Cab and Double-Cab models, plus a neat overhead console.



4x4 SR5 Double-Cab Pick-up Turbo-diesel in Metal Storm with optional Towbar, Towball and Trailer Harness accessory (Sold separately)

Real muscle to move the beast.

Whether you're navigating the urban jungle, or taming challenging terrain, you need real grunt to take it on. Which is why HiLux offers you three powerful engines, so you can flex the muscle that best suits your needs.

The 2.7 litre 4-cylinder with VVT-i is available on WorkMate models. This gutsy 116kW DOHC petrol engine makes outstanding performance available at an affordable price and delivers smooth, efficient power all the way through the rev range. And to keep it peaceful in the cabin, the twin counter-rotating balance shafts reduce Noise Vibration and Harshness (NVH).

The 4.0 litre V6 is available on SR and SR5 models with VVT-i technology. This high-performance quad cam petrol engine delivers a muscled-up 175kW of power at 5,200rpm. It's big on torque too, punching out a massive 376Nm of torque at 3800rpm.

The 3.0 litre Electronic Direct Injection Turbo-diesel is available in various Workmate, SR and SR5 models and delivers a hefty 126kW of power at 3600rpm, matched by a serious 343Nm of torque at 1400-3400rpm – all whilst complying with EURO IV emission standards. The 'common rail' fuel injection technology improves combustion efficiency and the four valve cylinder head, centrally located injector and in-piston combustion chamber offer optimum performance.



2.7L 4-cylinder with VVT-i



3.0L Turbo-diesel



4.0L V6 with VVT-i



Front, Side and Curtain Shield Airbags shown on 4x4 SR5 Double-Cab A/T

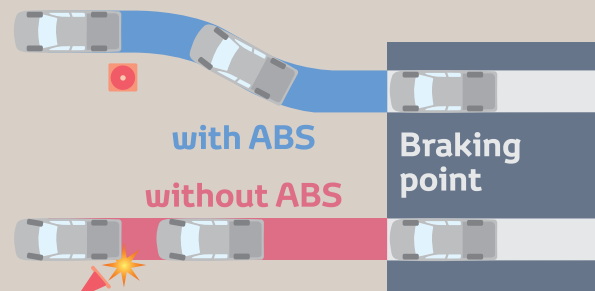
A tough, uncompromising approach to safety.

HiLux may be unbreakable, but you're not. Which is why HiLux is as serious about safety as it is tough. With an energy-absorbing front chassis structure and strong Safe-T-Cell, it's built to help take any impact on the chin.

It's also got brains to match the brawn with plenty of intelligent safety features, including an Anti-lock Braking System (ABS) fitted as standard on all models.

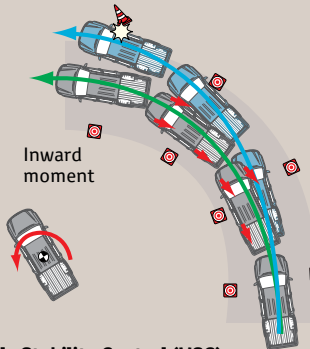
On all 4x4 HiLux vehicles you'll have Traction Control (TRC) to control wheel spin; Vehicle Stability Control (VSC) to help with any potential oversteer or understeer; Electronic Brake-force Distribution (EBD) to increase the brake force to the wheel(s) that need it most; while Brake Assist (BA) ensures the shortest and safest possible braking distance in an emergency.

In the event of a collision, the driver and front passenger outer pre-tensioned seatbelts will tighten and lock, and the twin SRS airbags will help cushion the blow. In the 4x4 models, you'll have the added protection of front, side and full length curtain SRS airbags.

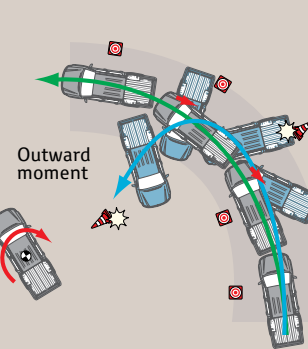


Anti-lock Braking System (ABS)

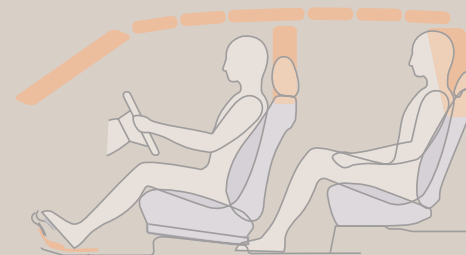
Front wheel skid control



Rear wheel skid control



Vehicle Stability Control (VSC)



Head and leg impact protection structure on Double-Cab models

WorkMate

4x2

An uncompromising workhorse for everyday adventures, the WorkMate is available as a Single-Cab Cab-Chassis or Double-Cab Pick-up – and with power to get the job done everytime.

With a choice of a 2.7 litre 4-cylinder petrol engine, or a 3.0 litre Turbo-diesel, it's got power to burn.



Single-Cab Cab-Chassis 2.7L Petrol in Eclipse Black shown accessorised with after-sale Dealer fitted Steel Tray

SR 4x2

With all the features of the WorkMate – along with some additional kick and a range of great extras, the SR is a versatile beast. Choose from a Single, Extra or Double-Cab and from a Cab-Chassis or Pick-up.

Engine-wise, it's your call whether you go for the 4.0 litre V6 petrol or 3.0 litre Turbo-diesel with a powerful 343Nm of torque.



Extra-Cab Pick-up Turbo-diesel in Glacier White

SR5 4x2

The ultimate in the 4x2 class is the SR5, a triumph of style and substance. With Satellite Navigation³ as standard and plenty of room inside. Available in a 4.0 litre V6 petrol for the Double-Cab pick-up, the interior boasts a host of extras such as a premium multi-function steering wheel, a 6.1" Satellite

Navigation³ with LCD touch-screen, six speaker audio system with Bluetooth[®] compatibility² – for a little extra luxury among the tough stuff. Complete the look with a sports bar, alloy wheels and privacy glass on the rear windows.



Double-Cab Pick-up V6 in Tidal Blue

SR 4x4

Available as a gutsy Turbo-diesel the SR 4x4 provides you with loads of different combinations, so you can pick the right one to get the job done.

There are Single-Cab, Double-Cab and Extra-Cab variants that, depending on the option you choose, are available in either Pick-up or Cab-Chassis all with standard VSC, TRC, EBD and BA safety features.



Single-Cab Cab-Chassis Turbo-diesel in Graphite shown accessorised with after-sale Dealer fitted Steel Tray

SR5 4x4

Available as a Petrol V6 or Turbo-diesel the 4x4 SR5 is the ultimate HiLux. In both Extra-Cab or Double-Cab variants it's packed full of style and special features including 17" alloy wheels as standard as well as all the intelligent technologies

and safety features in the SR 4x4. The SR5 look is perfected with sports bar, chrome power exterior mirrors and on the Double-Cab models privacy glass on the rear windows.



Great colours, tough choice.

Now make your unbreakable HiLux look unbelievable by choosing one of eight bold colours. Choose the one that best suits your taste.



Silver Sky⁴ 1D6



Graphite⁴ 1G3



Metal Storm⁴ 1H2



Velocity Red 3E5



Lustre⁴ 5A7



Tidal Blue⁴ 8T7



Glacier White 040



Eclipse Black⁴ 218

Tough love.



SR 4x4 Double-Cab Turbo-diesel model shown

If you spend hours behind the wheel, or long days on the job, you appreciate space to relax. Which is why HiLux seating has been designed with total comfort in mind.

The front seats have a slim profile, to maximise legroom, with a cushioned panel to support your hips and help reduce fatigue on longer drives. They can also be adjusted into a variety of seat positions to suit the way you want to sit.



SR5 Double-Cab

Have it your way.



4x4 SR Double-Cab Pick-up V6 with option pack in Silver Sky accessorised with Roof Racks, Kayak Carrier, Steel Bull Bar, Driving Lights, 17" Alloys, Weathershields and Ute/Tailgate Liner. All accessories sold separately.



4x2 WorkMate Single-Cab Cab-Chassis Turbo-diesel accessorised with Heavy Duty Steel Tray, Stainless Steel Nudge Bar, Driving Lights, Rear Window Protector and Bonnet Protector. All accessories sold separately.

Unbreakable, just the way you want it.

As Australia's favourite workhorse, there's no limit to what HiLux can do. That's why you can choose from a huge range of Genuine Toyota Accessories to make your HiLux your perfect mate. And each and every one of them is made unbreakable tough.



Towbar with Rear Step⁵
(Towball and trailer wiring harness sold separately)



Towbar, Towball and Trailer Wiring Harness⁵
(Sold separately)



Reversing Camera⁶
(Tray Body)



17" Alloy Wheels
(BF Goodrich tyres sold separately at participating Dealers)



Reverse Parking Sensors⁶ (Tray Body)



Steel Bull Bar, Driving Lights and Superwinch
(Sold separately)



Canvas Style Seat Covers



Sports Vest Seat Covers



Aero Roof Racks (Two bar set)



Alloy Sports Bar



Stainless Steel Deluxe Nudge Bar



Smooth Canopy with Roof Racks
(Sold separately)



Tray Soft Tonneau Cover



Hard Sports Tonneau Cover



Weathershields (Sold separately)



Alloy Bull Bar

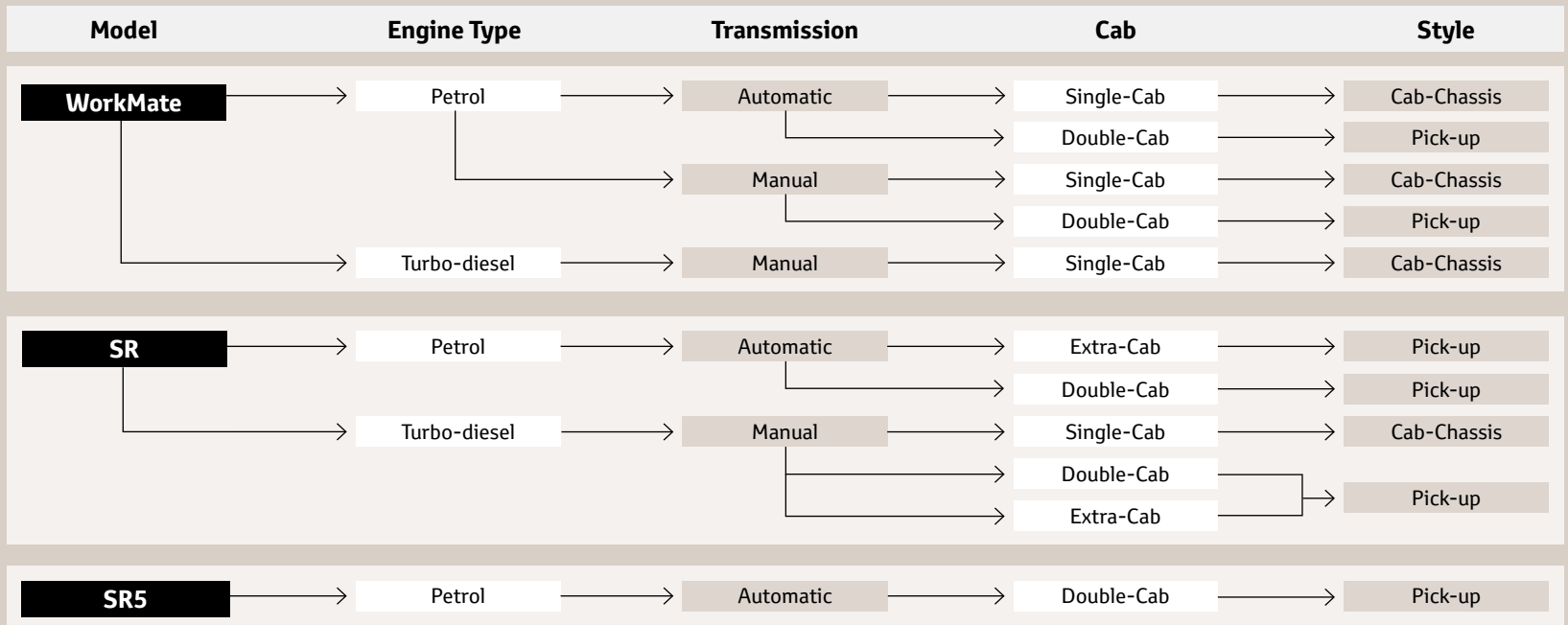


Bonnet Protector and Headlamp
Covers (Sold separately)

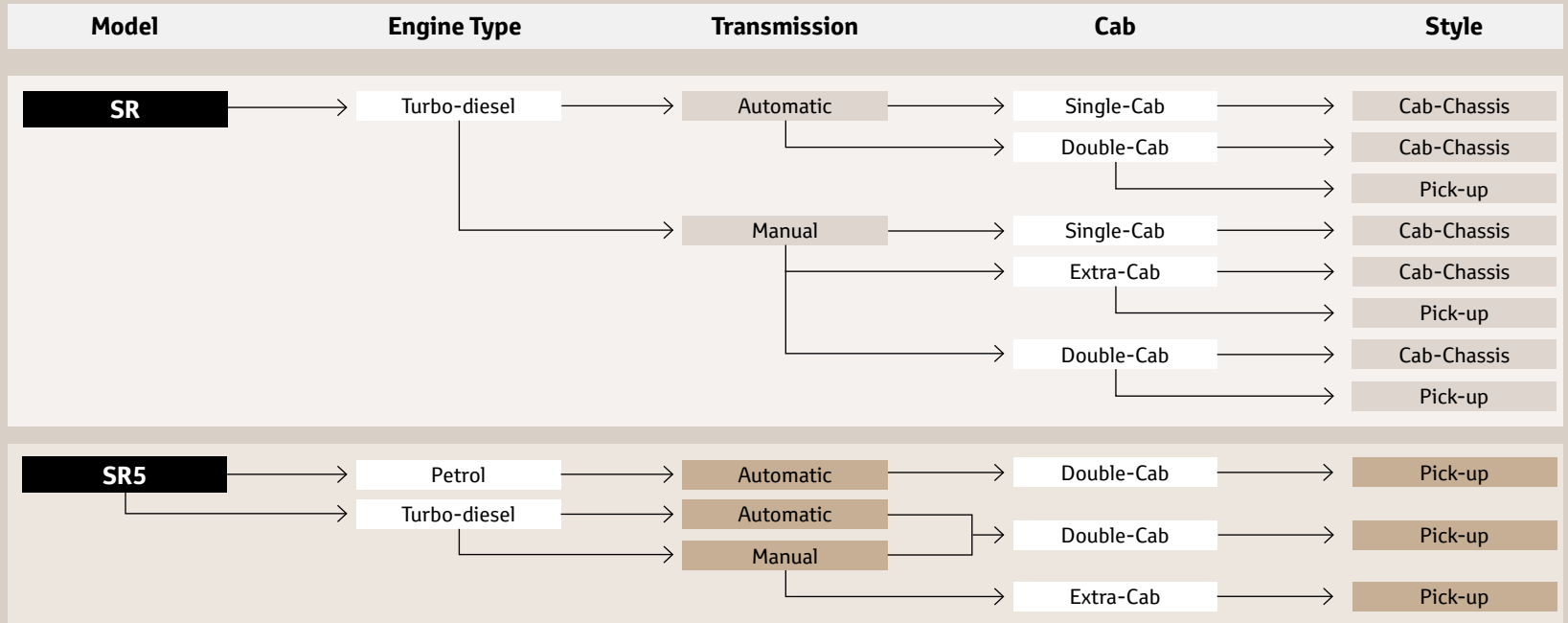


Alloy Tray Body Range (General Purpose Alloy Tray pictured)

A HiLux 4x2 to suit every need.



A HiLux 4x4 to suit every need.



HILUX 4x2 SPECIFICATIONS		4-cylinder Petrol			V6 Petrol			Turbo-diesel		
Engine	Name	2TR-FE			1GR-FE			1KD-FTV		
	Displacement (cm ³)	2694			3956			2982		
	Max power (kW@rpm)	116@5200			175@5200			126@3600		
	Max torque (Nm@rpm)	240@3800			376@3800			343@1400-3400		
	Valve train	16-valve DOHC, with Variable Valve Timing with intelligence (VVT-i)			24-valve DOHC, with Variable Valve Timing with intelligence (VVT-i)			16-valve DOHC, with intercooler and Electronic Direct Injection		
	Fuel system	Electronic Fuel Injection			Electronic Fuel Injection			Electronic Direct Injection, Common Rail		
	Bore x Stroke (mm)	95.0 x 95.0			94.0 x 95.0			96.0 x 103.0		
	Compression ratio	9.6:1			10.0:1			17.9:1		
Transmission 4x2	Type	5-speed manual and 4-speed automatic			5-speed automatic			5-speed manual		
	Gear ratio – manual	1st 3.830; 2nd 2.062; 3rd 1.436; 4th 1.000; 5th 0.838; Reverse 4.220			—			1st 4.313; 2nd 2.330; 3rd 1.436; 4th 1.000; 5th 0.838; Reverse 4.220		
	Gear ratio – automatic	1st 2.804; 2nd 1.531; 3rd 1.000; 4th 0.753; Reverse 2.393			1st 3.520; 2nd 2.042; 3rd 1.400; 4th 1.000; 5th 0.716; Reverse 3.224			—		
	Differential ratio (rear)	Manual and Automatic: 4.100			Automatic: 3.583			Manual: 3.583		
HiLux 4x2 Model		WorkMate			SR					SR5
Engine		Turbo-diesel	Petrol		Turbo-diesel			Petrol		Petrol
Body Type		Single-Cab	Single-Cab	Double-Cab	Single-Cab	Extra-Cab	Double-Cab	Extra-Cab	Double-Cab	Double-Cab
		Cab-Chassis	Cab-Chassis	Pick-up	Cab-Chassis	Pick-up	Pick-up	Pick-up	Pick-up	Pick-up
Mechanical	2.7 litre twin cam VVT-i 4-cylinder Petrol engine	—	•	•	—	—	—	—	—	—
	4.0 litre V6 twin cam VVT-i Petrol engine	—	—	—	—	—	—	•	•	•
	3.0 litre EDI twin cam Turbo-diesel engine	•	—	—	•	•	•	—	—	—
	5-speed manual transmission	•	•	•	•	•	•	—	—	—
	4-speed auto transmission	—	•	•	—	—	—	—	—	—
	5-speed auto transmission with AI shift control (V6 only)	—	—	—	—	—	—	•	•	•
Dimensions ⁷	Overall length (mm)	4980	4980	5135	4980	5135	5135	5135	5135	5260
	Overall width (mm)	1760	1760	1760	1760	1760	1760	1760	1760	1760
	Overall height (mm)	1680	1680	1735	1680	1720	1735	1720	1735	1735
	Wheelbase (mm)	3085	3085	3085	3085	3085	3085	3085	3085	3085

• Standard, — Not available, ◊ Option available at extra cost, ◻ Standard on Pick-up, ◻ Standard on Cab-Chassis, + Standard on T/D Models only, # Manual transmission only, *Automatic transmission only.

HiLux 4x2 Model		WorkMate			SR					SR5
Engine		Turbo-diesel	Petrol		Turbo-diesel			Petrol		Petrol
Body Type		Single-Cab	Single-Cab	Double-Cab	Single-Cab	Extra-Cab	Double-Cab	Extra-Cab	Double-Cab	Double-Cab
		Cab-Chassis	Cab-Chassis	Pick-up	Cab-Chassis	Pick-up	Pick-up	Pick-up	Pick-up	Pick-up
Dimensions⁷ <i>continued</i>	Track – front/rear (mm)	1510	1510	1510	1510	1510	1510	1510	1510	1510
	Overhang – front	890	890	890	890	890	890	890	890	890
	Overhang – rear	1005	1005	1160	1005	1160	1160	1160	1160	1285
	Angle of approach	22°	22°	22°	22°	21°	22°	21°	22°	22°
	Angle of departure	—	—	20°	—	20°	20°	20°	20°	18°
	Tray length (mm)	—	—	1520	—	1805	1520	1805	1520	1520
	Tray width (mm)	—	—	1515	—	1515	1515	1515	1515	1515
	Tray height (mm)	—	—	450	—	450	450	450	450	450
Vehicle Weights and Capacities	Kerb weight – manual (kg) ⁸	1495	1375	1620	1495	1685	1710	—	—	—
	Kerb weight – automatic (kg) ⁸	—	1380	1635	—	—	—	1575	1655	1665
	Gross Vehicle Mass (GVM) (kg) ⁹	2780	2780	2710	2780	2740	2710	2740	2710	2710
	Towing capacity – with trailer brakes (kg) ⁵	2250	2250	2250	2250	2250	2250	2250	2250	2250
	Towing capacity – without trailer brakes (kg) ⁵	750	750	750	750	750	750	750	750	750
	Seating capacity – including driver – manual	3	3	5	3	4	5	—	—	—
	Seating capacity – including driver – auto	—	2	5	—	—	—	4	5	5
	Fuel tank capacity (litres)	76	76	76	76	76	76	76	76	76
Steering	Type	Power Assisted Rack and Pinion								
	Turning circle (m)	11.8								
Brakes	System	Vacuum boosted hydraulic system								
	Front	Ventilated disc brakes								
	Rear	Self adjusting drum								
	Anti-lock Braking System (ABS)	•	•	•	•	•	•	•	•	•
Suspension	Front	Double wishbone type with coil springs, gas filled shock absorbers and stabiliser bar								
	Rear	Leaf spring type rigid axle with gas filled shock absorbers								
Wheels	Tyres	205/70R15C	205/70R15C	205/70R15C	205/70R15C	205/70R15C	205/70R15C	205/70R15C	205/70R15C	205/70R15C
	Wheels	15" steel	15" steel	15" steel	15" steel	15" steel	15" steel	15" steel	15" steel	15" alloy
Fuel Economy	ADR 81/02 combined (L/100km) ¹⁰ – manual	8.1	11.0	11.0	8.1	8.1	8.1	—	—	—
	ADR 81/02 combined (L/100km) ¹⁰ – automatic	—	11.5	11.6	—	—	—	11.7	11.8	11.8

• Standard, — Not available, ◊ Option available at extra cost, ▣ Standard on Pick-up, ◊ Standard on Cab-Chassis, + Standard on T/D Models only, # Manual transmission only, *Automatic transmission only.

HiLux 4x2 Model		WorkMate		SR			SR5
Body Type		Single-Cab	Double-Cab	Single-Cab	Extra-Cab	Double-Cab	Double-Cab
Exterior	Body colour front bumper	—	—	•	•	•	•
	Chrome step type rear bumper	—	—	—	—	—	•
	Multi-reflector headlamps	•	•	•	•	•	•
	Front fog lamps	—	—	—	—	—	•
	Privacy glass	—	—	—	—	—	•
	Spare steel wheel	•	•	•	•	•	•
	Deck guard frame with stopper	—	▣	—	▣	▣	—
	Alloy sports bar	—	—	—	—	—	•
	Chrome door handles and mirrors	—	—	—	—	—	•
	Front only mudflaps	•	—	•	—	—	—
	Front and rear mudflaps	—	•	—	•	•	•
	Bonnet scoop	+	—	+	+	+	—
Metallic paint ⁴	0	0	0	0	0	0	
Interior	Vinyl seat trim	•	•	—	—	—	—
	Cloth facing seat trim	—	—	•	•	•	•
	Moulded front door trims	•	•	—	—	—	—
	Moulded front door trims with cloth inserts	—	—	•	•	•	•
	Durable vinyl floor covering	•	•	•	•	•	—
	Floor carpet	—	—	—	—	—	•
Seating	Driver's bucket seat	•	•	•	•	•	•
	Front bench passenger seat	#	—	#	—	—	—
	Front passenger bucket seat	*	•	*	•	•	•
Features	Air conditioning	0	0	0	0	0	•
	Rotary type heater and ventilation controls	•	•	•	•	•	—
	Digital climate controls	—	—	—	—	—	•
	Power front windows	—	—	•	•	•	•
	Power rear windows	—	—	—	—	•	•
	Driver's auto up/down window	—	—	•	•	•	•
Instruments and Controls	Power steering	•	•	•	•	•	•
	Manual tilt steering column	•	•	•	•	•	•
	Cruise Control	—	—	•	•	•	•
	Optitron combination meter	—	—	•	•	•	•
	Multi Information Display (MID) including trip computer	—	—	•	•	•	•
	Steering wheel mounted audio controls	•	•	•	•	•	•
	Multi Information Display steering wheel controls	—	—	•	•	•	•
	Power mirrors	—	—	•	•	•	•
	Power accessory socket	—	—	—	—	—	•
	Variable intermittent windscreen wipers	—	—	•	•	•	•
	Automatic transmission shift interlock	*	*	*	*	*	•
	Headlamps auto on/off	—	—	—	—	—	•

• Standard, — Not available, 0 Option available at extra cost, ▣ Standard on Pick-up, 0 Standard on Cab-Chassis, + Standard on T/D Models only, # Manual transmission only, *Automatic transmission only.

HiLux 4x2 Model		WorkMate		SR			SR5
Body Type		Single-Cab	Double-Cab	Single-Cab	Extra-Cab	Double-Cab	Double-Cab
Lighting	Illuminated ignition switch	—	—	•	•	•	•
	Front map lights	—	•	—	•	•	•
Storage	Large glove box	•	•	•	•	•	•
	Front cupholders – in dash	•	•	•	•	•	•
	Rear cupholders – in centre console	—	•	—	—	•	•
	Drink/bottle holders – in front doors	•	•	•	•	•	•
	Drink/bottle holders – in rear doors	—	•	—	—	•	•
	Front door pockets	•	•	•	•	•	•
	Centre dashboard storage	•	•	•	•	•	•
	Centre console box with lid	*	•	*	•	•	•
Audio	AM/FM radio with MP3 compatible single disc CD player	•	•	•	•	•	—
	Satellite Navigation ³ with single disc in dash CD changer with 6.1" LCD display, MP3 compatibility and AM/FM tuner	—	—	—	—	—	•
	3.5mm AUX Input for portable audio players	•	•	•	•	•	•
	USB input for some iPod®13/USB memory sticks ²⁰	•	•	•	•	•	•
	Bluetooth® capabilities ²	•	•	•	•	•	•
	Number of speakers	2	2	2	2	2	6
	Manual antenna in A-pillar	•	—	•	—	—	—
	Roof mounted antenna	—	•	—	•	•	•
Safety	Anti-lock Braking System (ABS)	•	•	•	•	•	•
	Driver and front passenger SRS airbags	•	•	•	•	•	•
	Driver and front passenger seat belt warning buzzer	—	—	—	—	—	•
	Driver's and front passenger pre-tensioner seat belt	•	•	•	•	•	•
	Front centre seat lap seat belt	#	—	#	—	—	—
	3-point seat belt for rear outer seating positions	—	•	—	•	•	•
	3-point seat belt for rear centre position	—	•	—	—	•	•
	Door ajar warning light	•	•	•	•	•	•
	High mount centre rear stop lamp	—	•	—	•	•	•
	Front door anti-intrusion beams	•	•	•	•	•	•
Collapsible steering column	•	•	•	•	•	•	
Security	Engine immobiliser	•	•	•	•	•	•
	Remote keyless entry	—	—	•	•	•	•
	Lockable glove box	•	•	•	•	•	•
	Remote fuel door release	—	•	—	•	•	•

• Standard, — Not available, 0 Option available at extra cost, □ Standard on Pick-up, θ Standard on Cab-Chassis, + Standard on T/D Models only, # Manual transmission only, *Automatic transmission only.

HILUX 4x4 SPECIFICATIONS		V6 Petrol	Turbo-diesel
Engine	Name	1GR-FE	1KD-FTV
	Displacement (cm ³)	3956	2982
	Max power (kW@rpm)	175@5200	126@3600
	Max torque (Nm@rpm)	376@3800	343@1400-3400 (manual); 360@1400-3200 (automatic)
	Valve train	24-valve DOHC, with Variable Valve Timing with intelligence (VVT-i)	16-valve DOHC, with intercooler and Electronic Direct Injection (EDI)
	Fuel system	Electronic Fuel Injection	Electronic Direct Injection, Common Rail
	Bore x Stroke (mm)	94.0 x 95.0	96.0 x 103.0
	Compression ratio	10.0:1	17.9:1
Transmission 4x4	Type	5-speed automatic	5-speed manual and 5-speed automatic
	Gear ratio – manual	—	Manual: 1st 4.313; 2nd 2.330; 3rd 1.436; 4th 1.000; 5th 0.838; Reverse 4.220
	Gear ratio – automatic	Automatic: 1st 3.520; 2nd 2.042; 3rd 1.400; 4th 1.000; 5th 0.716; Reverse 3.224	Automatic: 1st 3.520; 2nd 2.042; 3rd 1.400; 4th 1.000; 5th 0.716; Reverse 3.224
	Differential ratio (rear)	Automatic: 3.583	Manual: 3.583; Automatic: 3.909

HiLux 4x4 Model		SR				SR5				
Engine		Turbo-diesel						Petrol	Turbo-diesel	
Body Type		Single-Cab	Extra-Cab		Double-Cab		Double-Cab	Extra-Cab	Double-Cab	
		Cab-Chassis	Cab-Chassis	Pick-up	Cab-Chassis	Pick-up	Pick-up	Pick-up	Pick-up	
Mechanical	4.0 litre V6 twin cam VVT-i Petrol engine	—	—	—	—	—	•	—	—	
	3.0L EDI twin cam Turbo-diesel engine	•	•	•	•	•	—	•	•	
	5-speed manual transmission	•	•	•	•	•	—	•	•	
	5-speed auto transmission with AI shift control	•	—	—	•	•	•	—	•	
Dimensions ⁷	Overall length (mm)	4980	4980	5135	4980	5135	5260	5260	5260	
	Overall width (mm)	1760	1760	1760	1760	1760	1835	1835	1835	
	Overall height (mm)	1805	1845	1845	1860	1860	1860	1845	1860	
	Wheelbase (mm)	3085	3085	3085	3085	3085	3085	3085	3085	
	Track – front/rear (mm)	1500	1500	1500	1500	1500	1540	1540	1540	

• Standard, — Not available, ◊ Option available at extra cost, ▣ Standard on Pick-up, ◊ Standard on Cab-Chassis, + Standard on T/D Models only, # Manual transmission only, * Automatic transmission only.

HiLux 4x4 Model		SR					SR5		
Engine		Turbo-diesel					Petrol	Turbo-diesel	
Body Type		Single-Cab	Extra-Cab		Double-Cab		Double-Cab	Extra-Cab	Double-Cab
		Cab-Chassis	Cab-Chassis	Pick-up	Cab-Chassis	Pick-up	Pick-up	Pick-up	Pick-up
Dimensions⁷ <i>continued</i>	Overhang – front	890	890	890	890	890	890	890	890
	Overhang – rear	1005	1005	1160	1005	1160	1285	1285	1285
	Angle of approach	30°	30°	30°	30°	30°	30°	30°	30°
	Angle of departure	—	—	26°	—	26°	23°	23°	23°
	Tray length (mm)	—	—	1805	—	1520	1520	1805	1520
	Tray width (mm)	—	—	1515	—	1515	1515	1515	1515
	Tray height (mm)	—	—	450	—	450	450	450	450
Vehicle Weights and Capacities	Kerb weight – manual (kg) ⁸	1685	1740	1850	1795	1940	—	1855	1930
	Kerb weight – automatic (kg) ⁸	1705	—	—	1805	1940	1850	—	1960
	Gross Vehicle Mass (GVM) (kg) ⁹	2835	2710	2710	2780	2780	2810	2710	2780
	Towing capacity – with trailer brakes (kg) ⁵	2500	2500	2500	2500	2500	2500	2500	2500
	Towing capacity – without trailer brakes (kg) ⁵	750	750	750	750	750	750	750	750
	Seating capacity – including driver – manual	2	4	4	5	5	—	4	5
	Seating capacity – including driver – auto	2	—	—	5	5	5	—	5
Fuel tank capacity (litres)	76	76	76	76	76	76	76	76	
Steering	Type	Power Assisted Rack and Pinion							
	Turning circle (m)	12.4							
Brakes	System	Vacuum boosted hydraulic system							
	Front	Ventilated disc brakes							
	Rear	Self adjusting drum							
	Anti-lock Braking System (ABS)	•	•	•	•	•	•	•	•
	Electronic Brake-force Distribution (EBD) with Brake Assist (BA)	• ¹¹	• ¹¹	• ¹¹	• ¹²	• ¹²	• ¹²	• ¹¹	• ¹²
Suspension	Front	Double wishbone type with coil springs, gas filled shock absorbers and stabiliser bar							
	Rear	Leaf spring type rigid axle with gas filled shock absorbers							
Wheels	Tyres	225/70R17AT ¹¹	225/70R17AT ¹¹	225/70R17AT ¹¹	225/70R17AT ¹¹	225/70R17AT ¹¹	265/65R17	265/ 65R17 ¹¹	265/65R17
	Wheels	17" steel	17" steel	17" steel	17" steel	17" steel	17" alloy	17" alloy	17" alloy
Fuel Economy	ADR 81/02 combined (L/100km) ¹⁰ – manual	8.2	8.2	8.3	8.3	8.3	—	8.3	8.3
	ADR 81/02 combined (L/100km) ¹⁰ – automatic	8.7	—	—	8.7	8.7	13.0	—	8.7

• Standard, — Not available, ◊ Option available at extra cost, ▣ Standard on Pick-up, ◊ Standard on Cab-Chassis, + Standard on T/D Models only, # Manual transmission only, * Automatic transmission only.

HiLux 4x4 Model		SR			SR5	
Body Type		Single-Cab	Extra-Cab	Double-Cab	Extra-Cab	Double-Cab
Exterior	Body colour front bumper	•	•	•	•	•
	Chrome step type rear bumper	—	—	—	•	•
	Multi-reflector headlamps	•	•	•	•	•
	Front fog lamps	—	—	—	•	•
	Privacy glass	—	—	—	—	•
	Deck guard frame with stopper	—	▣	▣	—	—
	Side steps	•	•	•	•	•
	Alloy sports bar	—	—	—	•	•
	Chrome door handles and mirrors	—	—	—	•	•
	Front only mudflaps	•	θ	θ	—	—
	Front and rear mudflaps	—	▣	▣	•	•
	Bonnet scoop	+	+	+	+	+
Metallic paint	∅	∅	∅	∅	∅	
Interior	Full cloth seat trim – sport style	•	•	•	•	•
	Durable vinyl floor covering	•	•	•	—	—
	Floor carpet	—	—	—	•	•
Seating	Driver's bucket seat	•	•	•	•	•
	Front passenger bucket seat	•	•	•	•	•
Features	Air conditioning	∅	∅	∅	•	•
	Rotary type heater and ventilation controls	•	•	•	—	—
	Digital climate controls	—	—	—	•	•
	Power front windows	•	•	•	•	•
	Power rear windows	—	—	•	—	•
	Driver's auto up/down window	•	•	•	•	•
Instruments and Controls	Power steering	•	•	•	•	•
	Manual tilt steering column	•	•	•	•	•
	Cruise control	•	•	•	•	•
	Optitron combination meter	•	•	•	•	•
	Multi Information Display including trip computer	• ¹¹	• ¹¹	• ¹²	•	•
	Multi Information Display steering wheel controls with telephone and voice recognition	• ¹¹	• ¹¹	• ¹²	•	•
	Steering wheel mounted audio controls	•	•	•	•	•
	Power mirrors	•	•	•	•	•
	Day/night manual interior mirror	•	•	•	•	•
	Power accessory socket	—	—	—	•	•
	Variable intermittent windscreen wipers	•	•	•	•	•
	Rear window demister	—	•	•	•	•
	Automatic transmission indicator in dash	*	—	*	—	*
	Automatic transmission shift interlock	*	—	*	—	*
	Headlamps auto on/off	—	—	—	•	•
Trip meter	•	•	•	•	•	

• Standard, — Not available, ∅ Option available at extra cost, ▣ Standard on Pick-up, θ Standard on Cab-Chassis, + Standard on T/D Models only, ∅ Optional on T/D only, # Manual transmission only, *Automatic transmission only.

HiLux 4x4 Model		SR			SR5	
Body Type		Single-Cab	Extra-Cab	Double-Cab	Extra-Cab	Double-Cab
Lighting	Illuminated ignition switch	•	•	•	•	•
	Front personal lamp	—	•	•	•	•
Storage	Large glove box	•	•	•	•	•
	Front cupholder/s – in dash	•	•	•	•	•
	Rear cupholders – in centre console	—	—	•	—	•
	Drink/bottle holders – in front doors	•	•	•	•	•
	Drink/bottle holders – in rear doors	—	—	•	—	•
	Front door pockets	•	•	•	•	•
	Centre dashboard storage	•	•	•	•	•
	Centre console box with lid	•	•	•	•	•
Audio	AM/FM radio with MP3 compatible single disc CD player	•	•	•	—	—
	Satellite Navigation ³ with single disc in-dash CD changer with 6.1" LCD display, MP3 compatibility and AM/FM tuner	—	—	—	• ¹¹	•
	3.5mm AUX input for portable audio players	•	•	•	•	•
	USB input for some iPod ^{®13} /USB memory sticks ²⁰	•	•	•	•	•
	Bluetooth [®] capabilities ²	•	•	•	•	•
	Number of speakers	2	2	2	6	6
	Manual antenna in A-pillar	•	—	—	—	—
	Roof mounted antenna	—	•	•	•	•
Safety	Anti-lock Braking System (ABS)	•	•	• ¹²	•	•
	Vehicle Stability Control (VSC)	• ¹¹	• ¹¹	• ¹²	• ¹¹	•
	Traction Control (TRC)	• ¹¹	• ¹¹	• ¹²	• ¹¹	•
	Electronic Brake-force Distribution (EBD)	• ¹¹	• ¹¹	• ¹²	• ¹¹	•
	Brake Assist (BA)	• ¹¹	• ¹¹	• ¹²	• ¹¹	•
	Reversing camera ⁶	—	—	—	• ¹¹	• ¹²
	Driver and front passenger SRS airbags	•	•	•	•	•
	Seat mounted driver and front passenger side SRS airbags	•	•	•	•	•
	Driver and front passenger seat belt warning buzzer	•	•	•	•	•
	Driver's and front passenger pre-tensioner seat belt	•	•	•	•	•
	3-point seat belt for rear outer seating positions	—	•	•	•	•
	3-point seat belt for rear centre position	—	—	• ¹²	—	• ¹²
	Door ajar warning light	•	•	•	•	•
	High mount centre rear stop lamp	—	□	□	•	•
Front door anti-intrusion beams	•	•	•	•	•	
Collapsible steering column	•	•	•	•	•	
Security	Engine immobiliser	•	•	•	•	•
	Power door locks	•	•	•	•	•
	Remote keyless entry	•	•	•	•	•
	Lockable glove box	•	•	•	•	•

• Standard, — Not available, ◊ Option available at extra cost, □ Standard on Pick-up, θ Standard on Cab-Chassis, + Standard on T/D Models only, # Manual transmission only, *Automatic transmission only.

The Toyota Advantage.

Every Toyota gives you a lifetime of advantages. That's what makes it a Toyota. You'll enjoy legendary Toyota value from the moment you drive away, and you'll continue to appreciate the quality, safety and innovation that's engineered into each model, every day you drive.



A smarter way to buy.

Toyota Access puts you in complete control when buying a new car.¹⁴ Drive out of the Dealership with a clear road ahead then drive back a few years later with more options at your disposal than ever before. Whatever stage you're at in life, Toyota Access puts you in the driver's seat with ongoing flexibility and assurance. To discover Toyota Access for yourself visit toyota.com.au/access



Finance to get you going.

If you need a little help, Toyota Finance¹⁷ can offer you a wide range of vehicle financing. With Toyota Finance, you'll have the peace of mind of dealing with one of Australia's leading vehicle finance corporations with over 30 years experience. And with a range of flexible products and services to suit almost every need and circumstance, Toyota Finance can help find the right package for you or your business.



Capped price servicing.¹⁵

A new Toyota means you don't have to worry about unexpected service costs. Every Toyota comes with a low, capped price service cost for a set number of years/kilometres. Pay the same low capped price from one eligible logbook service to the next for up to three years or 60,000km, whichever occurs first (including Genuine parts, labour and fluids). For the full benefits consult a Toyota Dealer or visit toyota.com.au/advantage



Even more protection.

Our Comprehensive Motor Vehicle insurance¹⁸ policy is packed with great benefits including; agreed value cover or New vehicle replacement cover for Toyota vehicles damaged beyond repair within 3 years of original registration, Genuine Parts Promise and Lifetime Repair Guarantee. And our Toyota Insurance Factory Approved Extended Warranty Insurance provides protection that continues after your Toyota New Vehicle Warranty ends.



We've got your back.

Every new Toyota is built to exceptional standards, backed by a three year/100,000km¹⁶ warranty, giving you the peace of mind to feel confident for years to come. In the unlikely event that you need them, every Toyota Service Centre is committed to providing any warranty repairs you may need. They have the technology, the tools, and the skilled personnel to keep your Toyota in excellent condition.



Extend your peace of mind.

Whether it's a flat tyre, lost keys or a flat battery, Toyota Extra Care Roadside Assist¹⁹ is never more than a phone call away. Available 24 hours a day, seven days a week, every day of the year, you'll have peace of mind, whatever your emergency. With two levels of cover available, Toyota Extra Care Roadside Assist provides one of the most professional, reliable, and technologically advanced assistance networks in Australia.

Disclaimers and Notice.

- 1 Available on 4x4 SR5 Double-cab models only.
- 2 The Bluetooth® word mark is owned by Bluetooth SIG, Inc. Not all devices will be compatible and functionality varies depending on the device.
- 3 Current navigation mapping database encompasses major capital and primary national road networks and offers some coverage in regional areas.
- 4 Paint featured is an optional extra at additional cost.
- 5 Towing capacity is subject to regulatory requirements, towbar and vehicle design and towing equipment limitations. Ask your Dealer for Toyota Genuine Towbar capacity and availability details.
- 6 Reversing Camera/Park Assist is a driver assist device only and should not be used as a substitute for safe driving practices. The area into which the vehicle is driven must be visually monitored by the driver.
- 7 Vehicle dimension figures are approximate and vary due to options and accessory fitment.
- 8 Kerb, tare and payload weights are nominal and vary depending on options and accessories.
- 9 Gross Vehicle Mass (GVM) is the total permissible combined weight of the vehicle, including occupants, fuel and cargo.
- 10 Fuel consumption varies depending on driving conditions / style, vehicle conditions and options / accessories. Source of fuel consumption data: ADR81/02 combined.
- 11 Available on Single and Extra Cab models from August 2013 production.
- 12 Available from 1 November 2013 production.
- 13 iPod® is a trademark of Apple, Inc. Not all devices will be compatible and functionality will vary depending on the device.
- 14 Guaranteed Future Value (GFV) is the minimum value of your new Toyota at the end of your finance contract, as determined by Toyota Finance. If you decide to return your car to Toyota at the end of your term, Toyota Finance will pay you the agreed GFV amount which will be put against your final payment, subject to fair wear and tear conditions and agreed kilometres being met. The information provided is general in nature. You should seek your own financial advice to determine whether Toyota Access is appropriate for your

Toyota Genuine Accessories are not applicable to all models/grades. Consider the mass of your load to ensure you will not exceed the maximum allowable individual axle capacity, Gross Vehicle Mass and/or Gross Combined Mass of the vehicle. Refer to the current Accessories brochure or visit toyota.com.au for details on

IMPORTANT NOTICE – PLEASE READ:

Toyota Australia uses its best endeavours to ensure this material is correct when published. You must check with your authorised Toyota Dealer when ordering to ensure the vehicle with your chosen specifications, equipment and colour is available and that the vehicle can be delivered within the timeframe suitable to you. When ordering accessories, you must check with your authorised Toyota Dealer to ensure the accessory's design, features and colours are available and will fit your vehicle. Please also consider the mass of your load to ensure you will not exceed the maximum allowable individual axle capacity, Gross Vehicle Mass and/or Gross Combined Mass of the vehicle. Refer to toyota.com.au/payload for further details. Colours displayed here are a guide only and may vary from actual colours due to printing/display processes. Certain accessories when fitted will require the removal of standard

- individual circumstances. Terms and conditions, fees and charges apply. Toyota Access Guaranteed Future Value (GFV) products are available to approved customers of Toyota Finance, a division of Toyota Finance Australia Limited ABN 48 002 435 181, Australian Credit Licence 392536.
- 15 Maximum payable for standard scheduled logbook servicing (normal operating conditions) until first of three years or 60,000km (whichever occurs first), up to the first six services. Excludes Government & Rental vehicles. Contact your Toyota Dealer or go to toyota.com.au/advantage for other exclusions, eligibility and full details.
 - 16 New Vehicle Warranty expires three years from date of first delivery or 100,000km, whichever occurs first. Refer to the warranty conditions. The New Vehicle warranty does not limit and may not necessarily exceed your rights under the *Competition and Consumer Act 2010*.
 - 17 Toyota Finance is a division of Toyota Finance Australia Limited ABN 48 002 435 181, Australian Credit Licence No 392536.
 - 18 Terms and conditions apply. This advice does not take into account any of your particular objectives, financial situation or needs. For this reason, before you act on this advice, you should consider the appropriateness of the advice taking into account your own objectives, financial situation and needs. Before making a decision about any of the insurance products, please refer to the current Product Disclosure Statement (PDS) for the relevant product available from participating Dealers, via the Toyota Insurance website at toyotainsurance.com.au or by calling 137 200. Toyota Insurance is a division of Aioi Nissay Dowa Insurance Co., Ltd. ABN 39 096 302 466 AFSL Number 254489 (Andia). The Insurer is Andia. Our insurance policies do not change or take away your rights under the Australian Consumer Law. Your right to claim under our policies for the benefits covered is in addition to other rights and remedies you have under the law in relation to your vehicle. However, you can choose to make a claim under any of our policies even if you have rights under the law.
 - 19 Toyota Extra Care is administered by Toyota Finance, a division of Toyota Finance Australia Limited ABN 48 002 435 181, Australian Credit Licence 392536.
 - 20 Not all devices will be compatible. Functionality varies depending on device.

warranty and toyota.com.au/vehiclepayload for details on vehicle payload, to help determine Accessories suitable for your vehicle. Accessory colours shown may vary from actual colour due to the printing process.

equipment. Standard equipment may be retained by Toyota Australia. Toyota Australia reserves the right to change, without notice, at any time prices, colours, materials, equipment, specifications and discontinue colours/models. To the extent permitted by law, Toyota Australia will not be liable for any damage, loss or expense incurred as a result of reliance on this material in any way. Distributed nationally (other than in Western Australia) by Toyota Motor Corporation Australia Limited ABN 64 009 686 097, 155 Bertie St, Port Melbourne 3207. Material distributed in Western Australia by or on behalf of Prestige Motors Pty Ltd (for vehicles) and by Eastpoint Pty Ltd (for parts/accessories). Toyota Australia makes no warranties regarding (and will not be liable for) the accuracy of materials distributed in Western Australia. PART NUMBER: TYHILUXPACKBRO. VALID: X6051-1 PRINTED: SEPTEMBER 2014. GT01566.



4x2 SR Extra-Cab Pick-up Turbo-diesel in Lustre