



SQ5

 Audi SQ5 TDI

Vorsprung durch Technik 



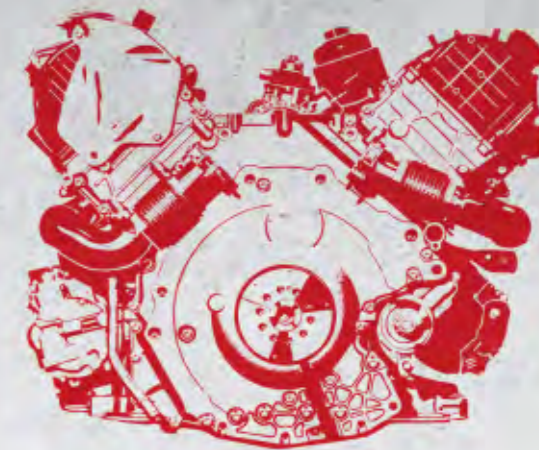
	Page	
Fascination		
	4	Audi SQ5 TDI
Technology		
	24	Audi efficiency
	26	Audi ultra
	28	TDI®
	30	quattro®
	32	S suspension
	34	Audi drive select
	36	Audi connect
	38	MMI® – Multi Media Interface
	40	Assistance systems
Equipment		
	42	Paint finishes
	44	Seats/seat upholstery
	47	Equipment and design packages, headlinings
	48	Inlays
	49	Wheels/tyres
	50	Lights and mirrors
	50	Exterior equipment
	51	Interior equipment
	53	Infotainment
	55	Assistance systems
	55	Technology
	56	Audi Extended Warranty
Other		
	58	Technical data
	59	Dimensions
	60	Index

Dialogue: Audi QR codes

Experience Audi even more directly: download a QR app to your smartphone and then scan the QR code or follow the given link in your browser.



The equipment for the vehicles illustrated can be found on page 63.
The fuel consumption and CO₂ emission figures can be found on page 58.



Power. Immediately.

Turn every day into an adventure. The vehicle you need is waiting: the Audi SQ5 TDI. An SUV suitable for every day, with innovative technology and sporty S design. The SQ5 TDI embodies our Vorsprung durch Technik in a special way: it is the first S model with a diesel engine. Let the adventure begin.

The fuel consumption and CO₂ emission figures can be found on page 58.

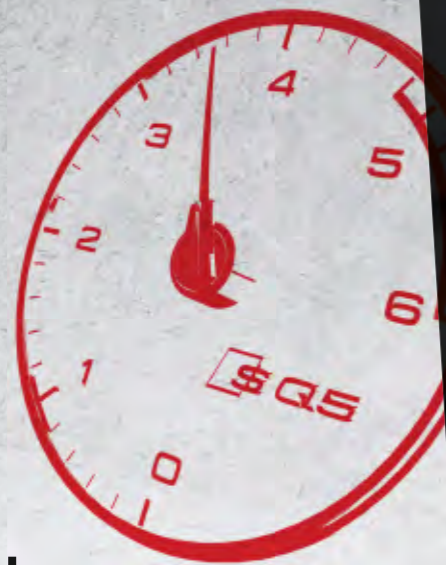
650

Nm

Spontaneous.

What's special about the V6 3.0 TDI with bi-turbocharging is that its high torque of 650 Nm is available even at low engine speeds. This engine develops its power harmoniously yet dynamically over the whole engine speed range. The result is impressive acceleration.

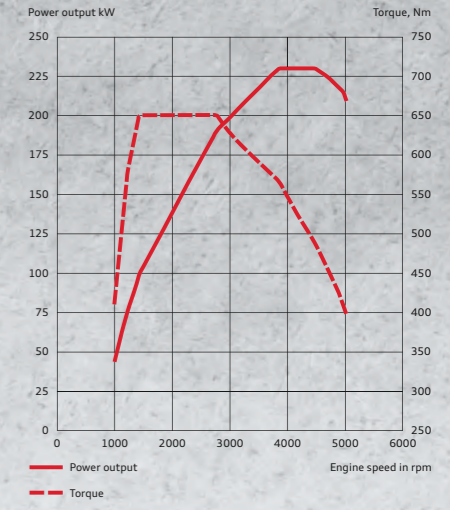
The fuel consumption and CO₂ emission figures can be found on page 58.





A full 230 kW accelerate the Audi SQ5 TDI from 0 to 100 km/h in only 5.1 seconds. And since it's a TDI engine, this agile forward movement is also particularly efficient. The dynamism of the engine is passed on intelligently by the quattro permanent all-wheel drive. This guarantees that each wheel gets just the power it needs at all times.

The fuel consumption and CO₂ emission figures can be found on page 58.





Driving dynamics.

8-speed.

Go faster while consuming less – thanks to the 8-speed tiptronic. Its Dynamic Shift Program (DSP) is operated via the selector lever or shift paddles behind the steering wheel. In automatic mode, you can choose between the D (normal) and S (sport) programs to make your drive even more individual.

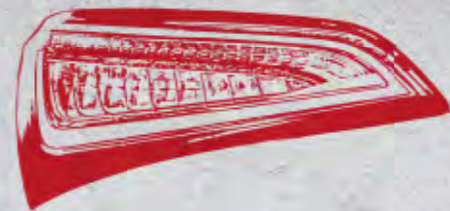
The optional Audi drive select allows you to define gear changing points yourself as well as change the vehicle's character to suit whatever mood you're in. The emphatically firm S suspension will support your sporty driving style.

The fuel consumption and CO₂ emission figures can be found on page 58.



Fascination.

Instantly.





Those in the know can tell straight away that this vehicle is a member of the S family, by the horizontal double chrome struts of the Singleframe in platinum grey, for example, the SQ5 emblem on the radiator protective grille and on the rear, or the black brake callipers at the front with the SQ5 emblem which can be seen through the 20-inch wheels. The special brilliance of the new Estoril blue and panther black crystal effect paint finishes makes them extremely impressive. Exterior mirrors in aluminium look, the LED daytime running light strip of the xenon plus headlights, and the oval, dual-branch tailpipes accentuate the dynamic appearance even further.

The fuel consumption and CO₂ emission figures can be found on page 58.





On the interior, the sport seat in optional fine Nappa leather with S embossing provides outstanding comfort and lateral support. A heated and ventilated climate-controlled comfort seat is available on request. You always have your Audi SQ5 TDI under control thanks to the leather-covered multifunction sport steering wheel in 3-spoke design. It has an SQ5 emblem and coloured stitching, and is available flattened at the bottom as an option. Always in view: the MMI - Multi Media Interface screen. The optional MMI navigation plus with 3D map display allows you to access different audio sources. In conjunction with the optional Bluetooth car phone online, you can even have a Wi-Fi hotspot of your own. During the ride, passengers can use it to surf the internet with their mobile device. In addition, you can use a number of services supported by Audi connect. More information about these features can be found on pages 36/37 under Audi connect.

The fuel consumption and CO₂ emission figures can be found on page 58.

Atmosphere.

Always.





Sophisticated details guarantee plenty of dynamism. Even the door sill trim bears the SQ5 emblem, while the instrument cluster has an S-specific design. The dial is grey, the needles white, and the newly designed needle hubs have been given an aluminium look. An eye-catcher: the SQ5 TDI emblem in 3D look in the rev counter. The shift paddles on the leather-covered multifunction sport steering wheel in 3-spoke design are also in aluminium look, as are the pedals and footrest. Inlays in classic matt brushed aluminium are included as standard, with innovative and sensational aluminium/Beaufort, black available as an option. They are also optionally available in carbon Atlas or piano finish, black.

The fuel consumption and CO₂ emission figures can be found on page 58.





Enthusiasm.
Over and over again.



Your Audi also bears our mark of special efficiency.

Our vehicles embody not only sportiness, progress and technical innovations, but also the intelligent use of resources.

One example: the TDI engines with common rail technology. Their combination of direct injection and turbocharging guarantees highly efficient diesel fuel combustion. Audi engines have been subject to an ongoing development process for years. This means that today they are more powerful than ever before – despite reduced

weight and thus reduced consumption. Impressive proof of our strategy of obtaining more power from less engine displacement.

The thermal management, which purposely distributes heat between the engine, transmission and interior, shortens the engine warm-up period and reduces engine and transmission friction respectively. The Audi drive select efficiency mode helps you to tap additional savings potential. The start-stop

system and recuperation also provide for greater efficiency.

You see, the Audi SQ5 TDI features a whole range of technologies that will make your journey not only more comfortable and dynamic, but more efficient, too. Find out more on the next few pages.

The fuel consumption and CO₂ emission figures can be found on page 58.





Audi ultra on the podium: the Audi R18 ultra

Audi ultra:

Every gram less extends the lead.

Audi ultra, the pioneering lightweight technology from Audi, is more than just the sum of its individual components. It combines innovative materials, intelligent design principles and production processes that use resources sparingly into an overall concept. Many Audi ultra lightweight measures have already been implemented in the Audi SQ5 TDI.

That starts with the body itself. The steel shell

design of the Audi SQ5 TDI combines low weight with high rigidity. The tailor-made floor pan is made using different material thicknesses and qualities. The design uses only as much material as necessary in the respectively right places.

The principle has convinced others, too: when it was launched in 2008, the Q5 body was honoured with the world's top prize for bodywork, the EuroCarBody Award*.

Extended use of hot and cold-formed steels of high rigidity classes allows thin metal panels to be used for the body. The aluminium components on the front and rear axle and the cast aluminium wheels not only reduce the overall weight but also the unsprung masses, which in turn leads to an increase in driving comfort.

Drive technologies such as direct fuel injection and turbocharging have always made Audi en-

gines more powerful. The modern TDI engine in the Audi SQ5 TDI is continuing this development. Each lightweight component has an effect on other components, allowing their dimensions to be reduced as well. The result is a continuous development process towards less and less weight and more and more efficiency. In figures: a vehicle that weighs 100 kg less can save up to 0.3 litres of fuel per 100 km.



- Aluminium sheet
- Aluminium profile
- Hot-formed steel
- Cold-formed steel

About weight reduction

The demands placed on modern vehicles are contradictory. On the one hand, they must offer enhanced performance and comfort, on the other they need to be more economical and efficient. Audi ultra resolves this conflict by examining each and every component. We demand the highest functionality combined with the lowest possible weight. The result is an intelligent mix of materials that even allows a reduction in engine size: lighter vehicles no longer need a large engine to be agile. In 2012, for instance, both the Audi R18 e-tron quattro and the Audi R18 ultra drove to podium finishes at in Le Mans with a V6 engine, whereas their victorious predecessor in 2010, the R15 TDI, had featured a V10 engine.

*International Body Benchmark Conference EuroCarBody 2008, press release cf. www.automotive-circle.com/pdf/ecb08/ecb_press_e.doc.

The fuel consumption and CO₂ emission figures can be found on page 58.



The piezo injectors open and close in fractions of a millisecond and inject fuel several times into the combustion chamber at pressures of up to 2,000 bar. In some cases, an injection process can involve the injection of the tiniest of amounts weighing less than a thousandth of a gram.



Pre-injection results in a “gentle” combustion process and consequently excellent combustion acoustics and agreeable engine running characteristics.

TDI®

In other words: Where is the tank?

One in every two Audi cars sold today is a diesel. What sounds perfectly normal now was cause for huge excitement 20 years ago, when Audi revolutionised the market with the first 2.5 litre TDI engine. Since then, developments such as common rail technology have made TDI even more efficient. Injectors ensure the fuel is finely and precisely distributed. Consequently, since the first TDI, the engines have become more

economical, whilst specific output has increased. So it was only logical that a diesel car should then enter the world of motorsport. And successfully too: in 2006, Audi was the first car maker to win the Le Mans 24 Hours with a diesel-powered race car, the Audi R10 TDI – a victory which it has repeated several times over, most recently in 2012.

The Audi SQ5 TDI has a bi-turbocharged 3.0 litre V6 TDI engine with 230 kW, which allows you to accelerate from 0 to 100 km/h in only 5.1 seconds. This performance is typical Audi – as is its efficiency. Numerous intelligent measures such as thermal management, the optimisation of friction, weight reduction, recuperation and the start-stop system all help to reduce fuel consumption. As little as 6.8 litres of diesel are

consumed per 100 km, with 179 g/km CO₂ emissions. These values make the SQ5 TDI Audi's most efficient S model. The engine reaches its impressive maximum torque of 650 Nm at an engine speed of only 1,450 rpm, developing its power thrillingly evenly.

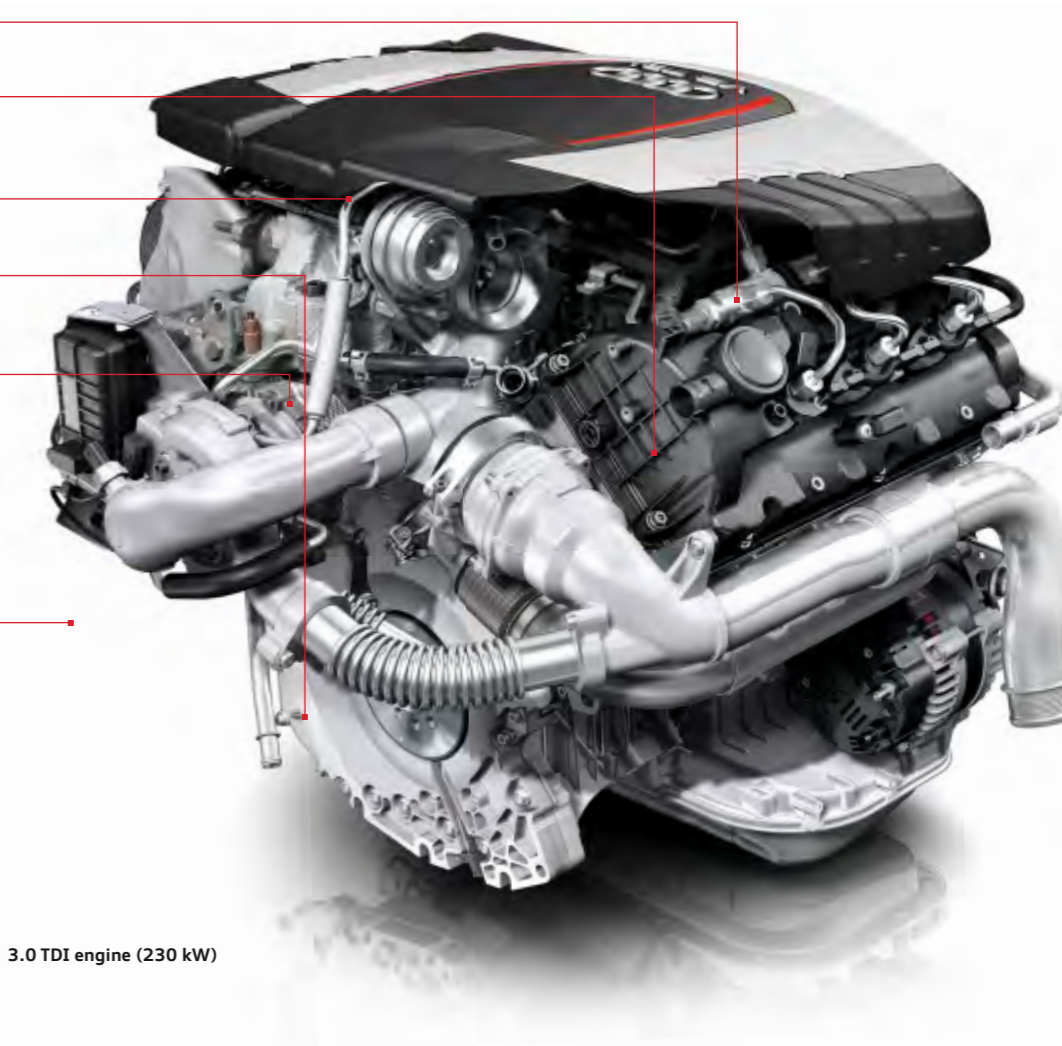
2,000 bar high-pressure injection system

cylinder head with optimised intake manifolds and two-piece water chamber

optimised intercooler

oil pump and water pump adapted to increased requirements

two-stage supercharging system with variable turbine geometry



3.0 TDI engine (230 kW)



Why only use two wheels when a car has four?

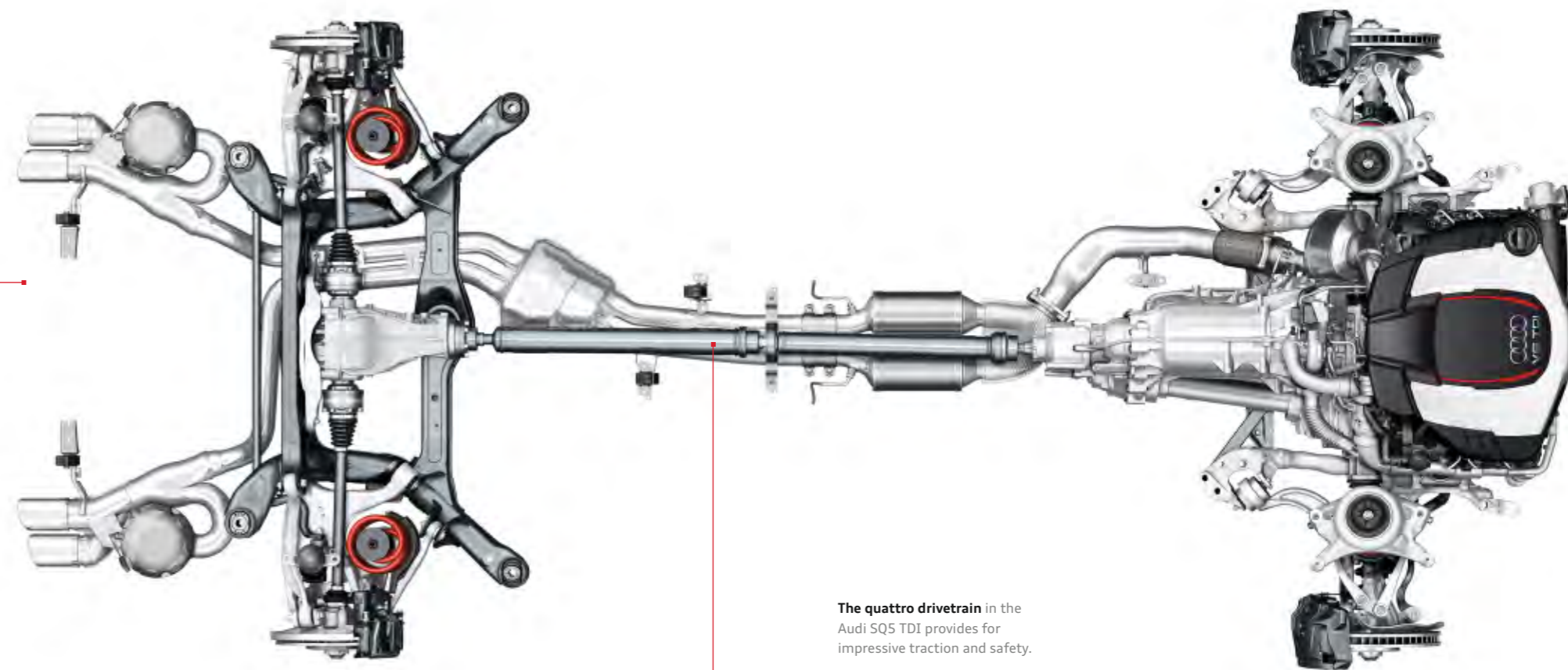
The quattro® permanent all-wheel drive.

quattro is a permanent all-wheel drive system. If the wheels on one axle of the vehicle lose grip on the road and threaten to spin, then the drive force is transferred to the other axle – automatically and permanently distributed through the self-locking centre differential with

wheel-selective torque distribution. The basic distribution is 40 : 60 – 40 % of the drive force goes to the front axle, 60 % to the rear axle. The benefit is better traction during acceleration and improved safety due to impressive grip.

So much for the technology. But what makes quattro so special is really the driving feel. “As if you’re stuck to the road,” some customers say. We put it like this: quattro gives you more feel for the road and thus increased safety.

The fuel consumption and CO₂ emission figures can be found on page 58.



The quattro drivetrain in the Audi SQ5 TDI provides for impressive traction and safety.

Dynamic. Comfortable. Superior.

Your suspension shows plenty of character.

Driving an SUV should feel sporty and agile too. In the Audi SQ5 TDI, the S sport suspension is lowered by 30 mm and works with a 5-link front axle and a trapezoidal-link rear axle. Both elements enable a fast power build-up and ensure remarkable driving stability, a comfortable ride and good directional stability.

The Electronic Stabilisation Control (ESC) provides intelligent technical support: this vehicle stabilisation system is, of course, fitted as standard. A sensor system recognises whether you have attached the standard roof cross-

members. The system then adapts to the higher centre of gravity caused by the load.

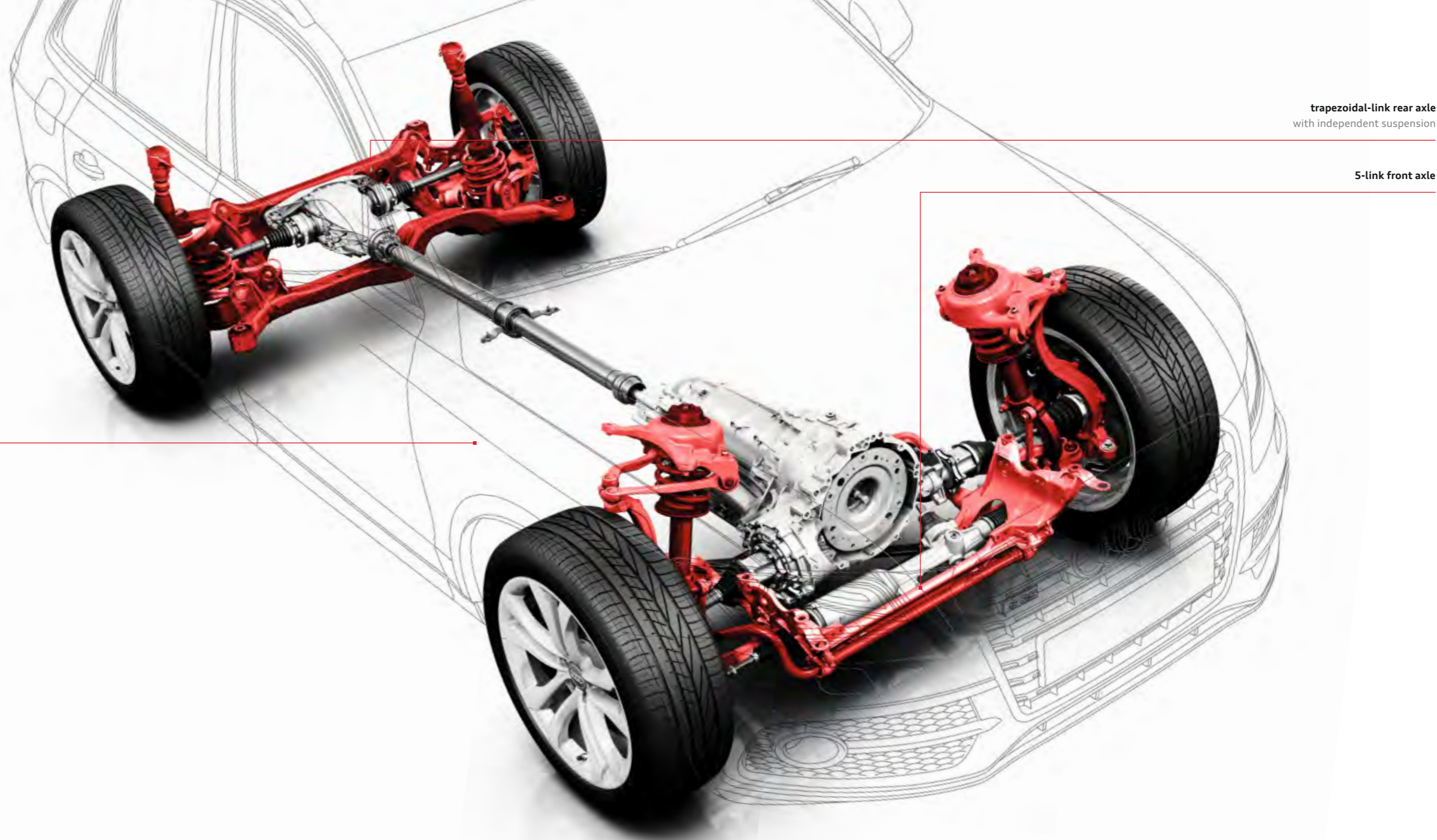
Just as intelligent is the electromechanical power steering fitted as standard. It is speed-sensitive, meaning that you enjoy a precise steering feeling at high speed and greater steering convenience when parking.

And if you want to go offroad for a change: ABS with traction improvement recognises when you are driving offroad and adapts its functions accordingly. And at the push of a button you can

adjust the ESC support to offroad operation; ASR then ensures better grip, even on rubble or gravel.

The standard hill descent control helps to maintain the speed specified by the driver within system limits even on steep descents. And the optional trailer towing hitch with trailer stabilisation system helps to avoid trailer swinging as a result of side winds or in the event of ruts in the road.

The fuel consumption and CO₂ emission figures can be found on page 58.



trapezoidal-link rear axle
with independent suspension

5-link front axle

Why does the Audi SQ5 TDI suit you so well? Because it adapts itself to you so well.

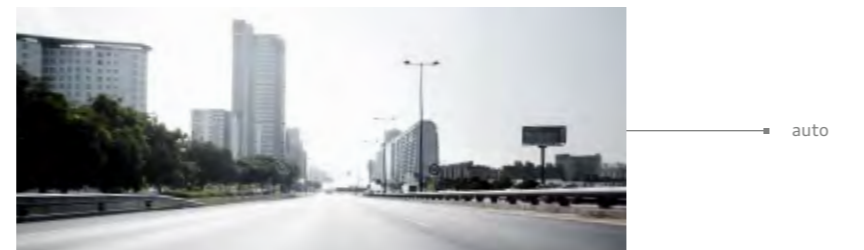
Audi drive select.



comfort



dynamic



auto



efficiency



individual

- engine/accelerator
- dynamic steering
- electromechanical power steering



automatic transmission

adaptive cruise control

Everybody defines driving dynamics differently. We define it like this: drive exactly how you feel. With the optional Audi drive select, you can influence individual vehicle components at the push of a button and so change the character of your Audi.

You have five modes to choose from: comfort, dynamic, auto, efficiency and, in conjunction with an optional MMI navigation system, individual mode, allowing you to determine yourself how the associated vehicle components should be-

have. The comfort mode is especially suitable for providing the most relaxed driving possible on long journeys. The auto mode offers a generally comfortable yet firm driving experience. For particularly sporty driving, for example on winding roads, there is the dynamic mode. The efficiency mode helps to improve the car's overall consumption. As an integral part of Audi drive select, it is characterised by more energy-efficient operation of the engine and auxiliary consumers, and a modified gear change program in models with automatic transmission.

In every mode, the vehicle adjustments depend on the equipment present. Audi drive select influences the engine, the steering and, in the case of tiptronic, the gear changing behaviour of the automatic transmission. The engine and gears react more spontaneously or in a more balanced manner to movements of the accelerator, depending on the mode chosen. Moreover, the engine speeds at which gear changes take place are varied - in dynamic mode, they only happen at higher engine speeds, while in comfort mode they take place at lower ones. The steering can also be

adapted to the driving situation, from sporty and firm to comfortable. Audi drive select also influences other optional equipment such as dynamic steering and adaptive cruise control.

About dynamic steering

Strain wave gearing

With dynamic steering, Audi's engineers have solved a problem that has kept many vehicle manufacturers busy: how to develop a steering system where the steering ratio and steering force adjust automatically to the driving speed. In the search for a gear system that reacts to the current vehicle status, the Audi engineers came across a system that was originally developed for NASA: strain wave gearing, characterised by an elastic transfer element. It was used for the first time in 1971 for the Lunar Rover reconnaissance vehicle during the fourth moon landing, and again in the Mars Sojourner that explored the Red Planet autonomously in 1997. It is currently being used in the Mars Spirit vehicle. Audi uses strain wave gearing for its dynamic steering, where it ensures an excellent and dynamic steering feel, whatever the speed. For this steering system, Audi was awarded the inaugural "Award for Mechatronic Innovation" by the VDI (The Association of German Engineers) in 2009.



Audi connect:

The intelligent connection between the internet, the vehicle and you.

The world is a network – and your Audi is part of it. Audi connect not only brings the internet into your vehicle, it also exploits the possibilities that your smartphone or netbook provide. In future, Audi connect will also make it possible to exchange data between vehicles as well as between vehicle and infrastructure. For even more driving pleasure and comfort.

With Audi connect you can use the MMI to easily search the internet for special destinations, or get the latest news and the current weather forecast for your intended navigation destination. Data is transferred via the UMTS module of the

Bluetooth car phone online, which can be ordered as an option for the MMI navigation plus.

Audi connect also offers you wireless internet access via a Wi-Fi hotspot. During the ride, passengers can retrieve information and e-mails or surf the internet using their mobile device. There is an application for Audi music stream available for some smartphones. The password-protected section of the myAudi platform offers you a range of personalised services and is your “control centre” for Audi connect. Following once-only registration, you can use it to manage and clear the services

supported by Audi connect conveniently, quickly and easily.

The services supported by Audi connect are only available with mobile phone contracts including a data option and only within the range of the respective mobile phone networks, and can be subject to a 36-month usage limit. Activation in the vehicle and clearance on the www.audi.com/myAudi platform is necessary for some services, and in the last case mentioned an additional registration is necessary. Additional costs can be incurred for the reception of data packets from the internet, depending on the terms of your

mobile phone contract, particularly when used abroad: because of the high data volumes involved, the use of a data flat rate is strongly recommended. Please contact your mobile services provider for more detailed information. The availability of the services supported by Audi connect varies from country to country. For more information, please contact your Audi partner. Visit www.audi.com/myAudi for more detailed information about Audi connect and the respective conditions of use.

¹ Google and the Google logo are registered trademarks of Google Inc. ² Available in Germany, Switzerland, Austria, Belgium, the Netherlands, Luxembourg, the UK, France and Italy.

³ For information on when this feature will be available, please contact your Audi partner.



Audi music stream
Access to global radio stations via smartphone app and Wi-Fi connection



POI
Point-of-interest search
including voice control



Navigation with Google Earth images¹



NEWS
News online
Text and images about current world events



Exploration with Google Maps Street View¹



myAudi – your personal “control centre” for Audi connect:
Manage and clear services, and enter navigation destinations via myAudi



City events³
Information about current events



Fuel stop³
The cheapest service stations in the vicinity



Travel information
The latest travel tips and diagrams from the internet for the route chosen



Wi-Fi hotspot



Traffic information online²
Detailed information on traffic flows, e.g. for individual stretches of road; faster information on the occurrence and clearing of traffic jams



Weather
Forecasts and maps for the required destination



If you want to experience the full diversity of Audi connect, scan this QR code using your smartphone. Or follow this link in your browser:
www.audi.com/audiconnectq5



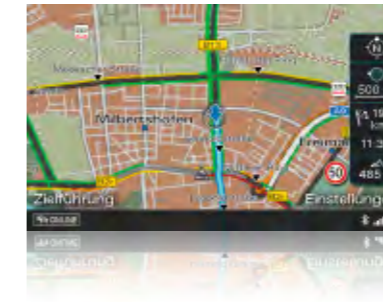
Radio: The integrated radio receiver is set up for FM (VHF), LW and MW and optionally delivers digital radio with a continually updated station list.



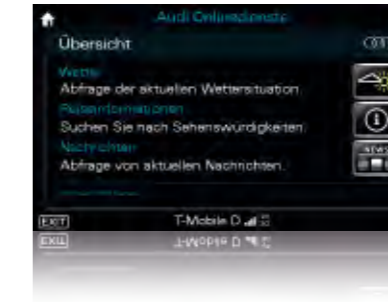
Telephone/Bluetooth: The optionally available preparation for mobile phone (Bluetooth) or the Bluetooth car phone online has a selection screen containing call lists, directory and selection interface as the start-up setting.



Media: display of available media sources such as the jukebox, inserted SDHC cards, Audi music interface or CDs and DVDs; display of optional TV tuners



Audi connect: Traffic information online
You not only get the right route to your destination but the quickest one too. In addition to traffic flow information, traffic information online provides faster information on the occurrence and clearing of traffic jams for dynamic route guidance as well as greater coverage of the road network.



Audi connect: Travel information/weather
provides weather forecasts and relevant information, such as charts and weather maps relating to the destination. **Audi connect: News online** provides comprehensive news items about current world events.



Audi connect: Navigation in a new dimension with true-to-life **Google Earth images*** as well as high-resolution aerial and satellite images. Viewing of photos, topographical features, roads and their designations, and business entries. The system accesses the data for the chosen route in advance. The Google Earth data are combined with the road network information from MMI navigation plus. Thanks to **Google Maps Street View*** you get a realistic picture of your destination on the way there in your vehicle. You can access detailed information on places to visit using the **point-of-interest (POI) search** function with voice control. **Destination input is by means of myAudi or Google Maps** and enables you to plan your route on your home computer with individual navigation destinations, and then send it to your vehicle. When you start your journey, the route plan is loaded into MMI navigation plus.



Follow your intuition.

And you'll get there.

We try to match up to our claim of “Vorsprung durch Technik” in every aspect of an Audi – for example with the optional MMI – Multi Media Interface. The MMI is used to control a wide variety of media in the car, as well as the navigation system and other convenience functions.

It used to be simple to operate the MMI – now MMI navigation plus makes it even easier. A reduced number of buttons brings greater clarity.

All six so-called hard keys, for telephone or navigation functions for example, are located around the central rotary/push-button control – for intuitive operation. The buttons for radio and media are logically arranged near the volume control. Another new feature is the carousel mode in the MMI display. This provides you with an even better overview, making it even easier for you to get to where you want to be.

Among the things currently available in conjunction with Bluetooth car phone online are Google Earth images to help with navigation. The point-of-interest search will take you to restaurants, sights or other places that interest you. And on request, Digital Audio Broadcasting guarantees even more music enjoyment.

By the way, you can make all your navigation system entries by voice control, leaving you more relaxed when you reach your destination.



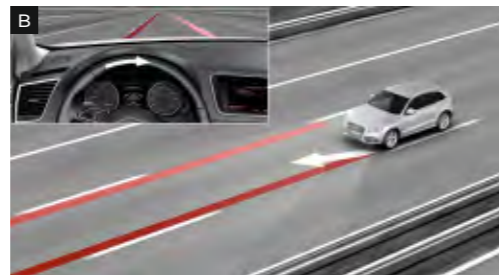
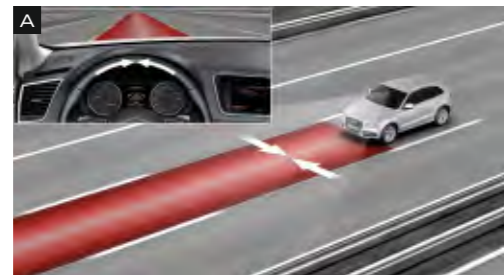
* Google and the Google logo are registered trademarks of Google Inc.

You sit at the wheel.

Others are working in the background.

Most road accidents are caused by human error. Modern assistance systems can help to reduce their severity. Audi puts various different technologies to work to help you reach your destination safely. The assistance systems are

closely networked, which increases their intelligence, versatility and performance. With the help of these systems, your journey will be safer and more relaxed.



adaptive cruise control with full braking action under 30 km/h;* automatic distance control (control range 30–200 km/h); working within system limits, it uses a radar sensor to detect vehicles ahead and maintain this distance by automatic braking and accelerating; 4 distance levels and different driving modes can be selected individually; including Audi pre sense front: the Audi braking guard warns the driver about a detected imminent collision with the vehicle in front through an extended brake assist feature; also includes the function of maximum deceleration: this is initiated at speeds below 30 km/h if there is a danger of collision with a stationary or moving vehicle in order to avoid this collision if possible.

Audi active lane assist*: lane compliance assistant, helps the driver within system limits to keep comfortably in lane (operating range 60–250 km/h). If the system is activated/ready and the driver has not operated the indicators, the Audi active lane assist will guide the vehicle within recognised lane boundary lines by means of gentle, corrective steering intervention; the driver can choose whether to be monitored continuously or just shortly before crossing the traffic lane marker (choice of earlier or later steering time); additional steering vibration can be adjusted if the driver wishes

The fuel consumption and CO₂ emission figures can be found on page 58.



Audi side assist*: lane change assistant, working within system limits at speeds of 30 km/h and above, the system uses radar technology to monitor the area on the left, right and behind the moving vehicle and informs or warns the driver by means of an LED display in the exterior mirror if the Audi side assist has detected another vehicle assessed as critical for lane-changing

Please note: The systems can only work within system limits. They can be of assistance, but drivers are still required to be attentive at all times.

*Optional equipment.

Solid paint finishes

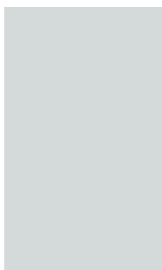


Ibis white

Metallic paint finishes



Glacier white, metallic



Monsoon grey, metallic



Pearl effect paint finishes



Phantom black, pearl effect



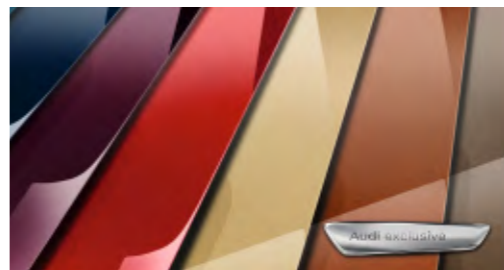
Crystal effect paint finishes



Panther black, crystal effect



Customised paint finishes



Audi exclusive customised paint finishes
From quattro GmbH

Paint finishes

Audi exclusive customised paint finishes
From quattro GmbH

Full paint finish
front and rear bottom bumper section and door trim
strips painted in body colour



Brilliant black



Ice silver, metallic



Moonlight blue, metallic



Lava grey, pearl effect



Estoril blue, crystal effect



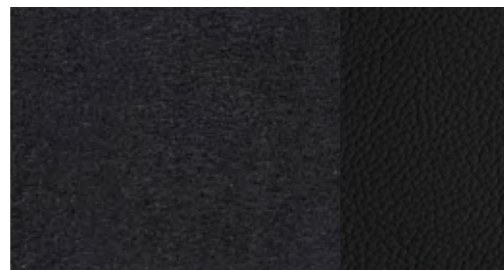
Volcano red, metallic



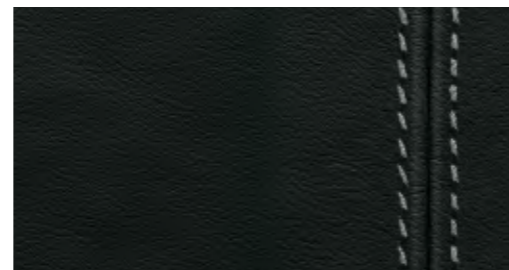


Sport seats, front
 with shaped seat side bolsters for improved lateral support when cornering and SQ5 embossing as well as with electric 4-way lumbar support, with and extendable thigh support; head restraints for all seats, L-shaped at the rear; manually adjustable. (The image shows sport seat, front, with S embossing in Alcantara/leather, lunar silver/black.)

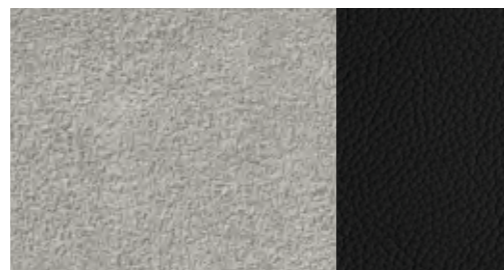
Leather upholstery and trim



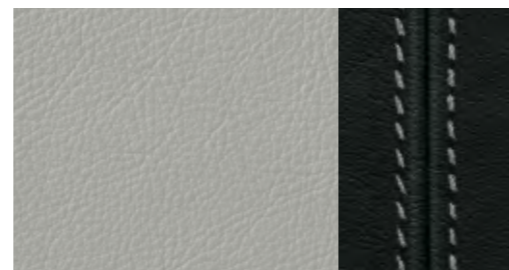
Alcantara/leather, black



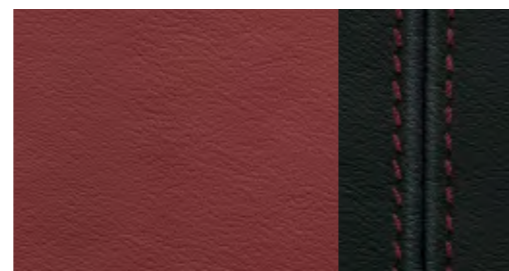
Fine Nappa leather, black
 with contrasting stitching



Alcantara/leather, lunar silver/black

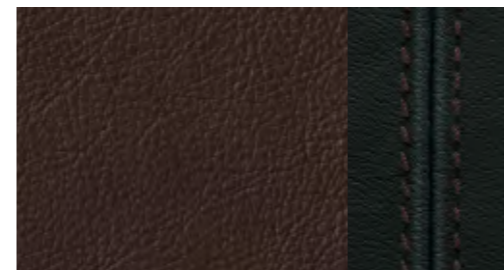


Fine Nappa leather, lunar silver/black
 with contrasting stitching

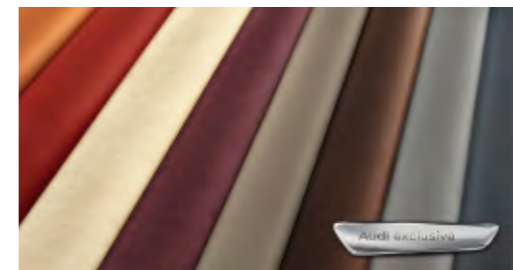


Fine Nappa leather, magma red/black
 with contrasting stitching

Leather upholstery and trim



Fine Nappa leather, chestnut brown/black
 with contrasting stitching

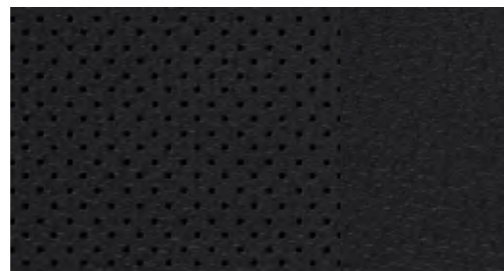


Audi exclusive leather upholstery and trim
 From quattro GmbH

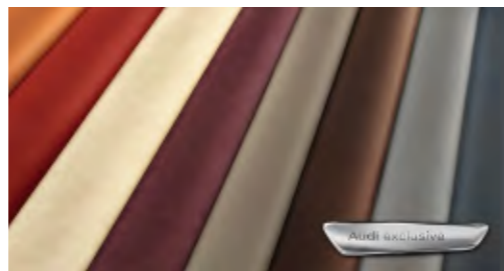


Climate-controlled comfort seats, front
 exclusive seat option with shaped seat side bolsters and soft-feel design for luxurious comfort; actively ventilated and heated, automatically heated to prevent cold seats; perforated leather on the ventilated seat cushions of the front seats and on the non-ventilated seat cushions of the 2 outer rear seats; head restraints for all seats, L-shaped at the rear; manually adjustable.
 (The image shows comfort seat, front, in perforated Milano leather, chestnut brown with seat ventilation, front).

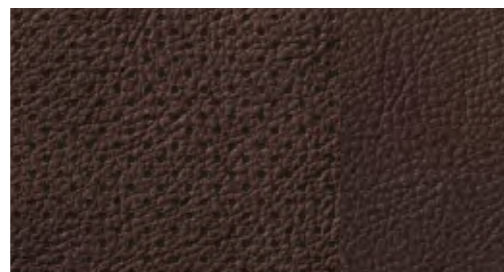
Leather upholstery and trim



Perforated Milano leather, black



Audi exclusive leather upholstery and trim
 From quattro GmbH



Perforated Milano leather, chestnut brown

Seat upholstery, equipment and design packages, headlinings

Alcantara/leather combination
 seat centre panel and door trim inserts in Alcantara, seat side bolsters and head restraint centre panel in leather

Perforated Milano leather
 seat upholstery and head restraint centre panel in Milano leather, perforated Milano leather on the ventilated seat cushions of the front seats and on the non-ventilated seat cushions of the 2 outer rear seats

Fine Nappa leather
 seat upholstery, head restraint and door trim inserts and armrest in fine Nappa leather

Leather-covered armrests in the door trims
 in fine Nappa leather (included with fine Nappa leather and in the leather package)

Leather package
 leather-covered armrest in the door trims and instrument panel cover in fine Nappa leather

Audi exclusive leather-covered instrument panel cover with contrasting stitching
 available in chestnut brown, saddle brown, Havana brown, classic red, night blue, Iceland green, smoke blue, jet grey and crimson red, individual choice of colour for stitching in different Audi exclusive colours.
 From quattro GmbH

Audi exclusive Alcantara/leather design package with sport seats, front
 seat side bolsters, head restraints, armrests in the door trims and front centre armrest in fine Nappa leather, seat centre panel and door trim inserts in Alcantara. Seat attachments and backrest covers to match interior colour. Also sport seats, front, with electric lumbar support. Optional: coloured stitching on seat side bolsters and head restraints. From quattro GmbH

Audi exclusive fine Nappa leather design package with sport seats, front
 seat upholstery, armrests in the door trims, front centre armrest and door trim inserts in fine Nappa leather, seat attachments and backrest covers to match interior colour. Also sport seats, front, with electric lumbar support. Optional: coloured stitching on seat side bolsters and head restraints. From quattro GmbH

Audi exclusive fine Nappa leather plus design package with sport seats, front
 seat upholstery, backrest covers, armrests in the door trims, front centre armrest and door trim inserts in fine Nappa leather, seat attachments to match interior colour. Also sport seats, front, with electric lumbar support. Optional: coloured stitching on seat side bolsters and head restraints. From quattro GmbH

Audi exclusive Valcona leather design package with climate-controlled seats, front
 seat side bolsters, head restraints, armrests in the door trims, door trim inserts and front centre armrest in Valcona leather, seat centre panel in perforated Valcona leather, seat attachments and backrest covers to match interior colour. Also climate-controlled comfort seats at the front. Optional: coloured stitching on seat side bolsters and head restraints. From quattro GmbH

Audi exclusive Valcona leather plus design package with climate-controlled seats, front
 seat side bolsters, head restraints, backrest covers, armrests in the door trims, door trim inserts and front centre armrest in Valcona leather, seat centre panel in perforated Valcona leather, colour of seat attachments and backrest covers to match the leather. Also climate-controlled comfort seats at the front. Optional: coloured stitching on seat side bolsters and head restraints.
 From quattro GmbH

Audi exclusive headlining in Alcantara black with contrasting stitching
 headlining in black, individual choice of colour for stitching in various Audi exclusive colours.
 From quattro GmbH

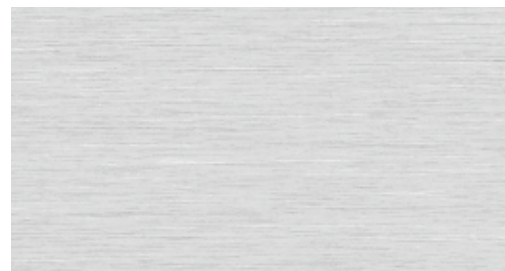
Headlining in lunar silver cloth

Headlining in black cloth

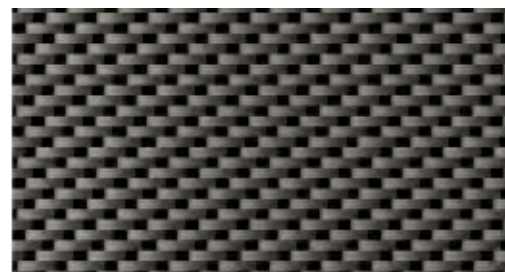
Headlining in Alcantara, lunar silver

Headlining in Alcantara, black

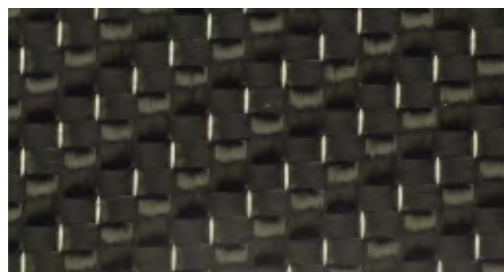
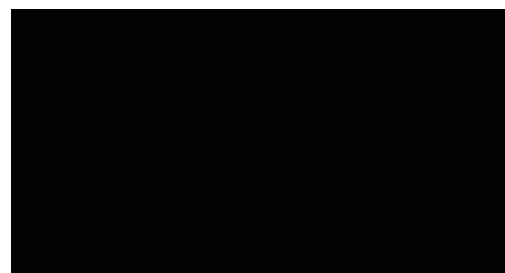
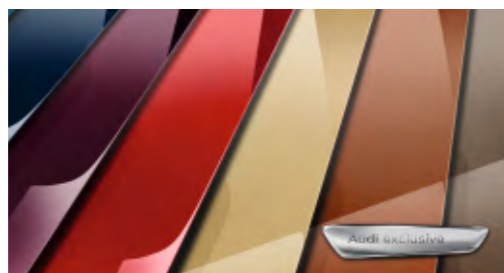
Inlays



Matt brushed aluminium

Aluminium/Beaufort, black
From quattro GmbHInlays in Audi exclusive wood
in a choice of different types of wood
or painted in body colour.
From quattro GmbH

Carbon Atlas

Audi exclusive carbon
From quattro GmbHPiano finish, black
From quattro GmbHInlays painted in body colour
From quattro GmbH

Inlays

matt brushed aluminium, carbon Atlas, piano finish, black, and aluminium/Beaufort, black for the instrument panel, door trims and in the centre console

Inlays in aluminium/Beaufort, black
for the instrument panel, door trims and in the centre console; aluminium/Beaufort, black is manufactured using a sophisticated process and is made up of aluminium layered with blackened wood. This unusual combination of materials combines natural elements with dynamism. From quattro GmbH

Inlays in piano finish, black
From quattro GmbH

Inlays in Audi exclusive carbon
From quattro GmbH

Inlays painted in body colour
From quattro GmbH

Inlays in Audi exclusive wood
available in fine grain ash, nougat, oak sepia, fine grain myrtle, nutmeg, vavona, bronze, Modrone wood, gold, tamo ash, natural dark brown. From quattro GmbH

Wheels/tyres

Cast aluminium wheels in 5-parallel-spoke design
size 8.5 J x 20 with 255/45 R 20 tyres,
including wheel arch trimsAudi exclusive cast aluminium wheels
in 7-twin-spoke design
size 8.5 J x 20 with 255/45 R 20 tyres,
including wheel arch trims.
From quattro GmbHCast aluminium winter wheels
in 5-parallel-spoke design
size 7 J x 19 with 235/55 R 19 tyres,
can be fitted with snow chains,
permissible top speed 210 km/hAudi exclusive cast aluminium wheels
in 5-twin-spoke offroad design, royal silver
size 8.5 J x 20 with 255/45 R 20 tyres,
including wheel arch trims.
From quattro GmbHAudi exclusive cast aluminium wheels
in 5-twin-spoke star design in titanium look,
high-gloss turned finish
size 8.5 J x 21 with 255/40 R 21 tyres,
including wheel arch trims.
From quattro GmbH

Anti-theft wheel bolts

can only be loosened with the supplied adapter

Tyre repair kit

with 12V compressor and tyre sealant; permissible top speed 80 km/h

Tyre pressure loss indicator

visual and acoustic warning if the pressure drops in one or more tyres; displayed in the driver information system

Vehicle tool kit

in the luggage compartment

Vehicle jack

in the luggage compartment

Lights
xenon plus including headlight cleaning system
The headlights with durable gas discharge technology for dipped and high beam enable an intensive illumination of the road with evenness and range, in a colour resembling daylight both close-up and in the distance. The automatic dynamic headlight beam control prevents oncoming traffic from being dazzled; homogeneous daytime running light strip, indicators, rear and brake lights in LED technology with low power consumption

Daytime running lights
integrated in the headlights, homogeneous daytime running light strip in LED technology with low power consumption

adaptive light
The dynamic cornering light identifies the course of the road from the movement of the steering wheel. The headlights swivel – depending on the steering angle – towards the bend providing variable illumination for the course of the bend. The adaptive light is operational between speeds of approx. 10 km/h and 110 km/h. Includes turning light, which switches on automatically if the indicator has been engaged for some time and illuminates the new direction of travel.

High-beam assist
working within system limits, it automatically detects the headlights of oncoming traffic, the rear lights of other road users and built-up areas. Depending on the traffic situation, the high beam is automatically switched on or off. The system thereby improves the driver’s visibility and ensures a more relaxed drive thanks to extra comfort and convenience; including light/rain sensor to control the automatic headlights and the automatic windscreen wiper function, including coming home/leaving home function: delayed switching-off/automatic switching-on of the main headlights, rear and number plate lights when parking/opening the vehicle

Interior lighting
with delayed switch-off and contact switches on all doors; front light with 2 additional reading lamps, rear lamps with reading lamp function, illuminated ashtray at front, glove compartment light, tailgate light, passive door reflectors, luggage compartment light, ambient lighting

Lighting package
illuminated vents, vanity mirror lights, front and rear footwell lighting, illuminated inside door handles, active door warning lights, active entry lights, in conjunction with light/rain sensor also with left and right exterior courtesy lighting

Front fog lights
with chrome ring, integrated in the front bumper, for better illumination of the road ahead when visibility is poor

Headlight cleaning system
uses water and high pressure, for excellent illumination, less scatter and good visibility

Light/rain sensor
for controlling the automatic headlights and the automatic windscreen wiper function, includes coming home/leaving home function: delayed switch-off/automatic switch-on for main headlights, rear and number plate lights when parking/opening the vehicle, includes windscreen with grey strip along the top edge

LED rear lights
LED brake/rear, rear fog, indicators and rear number plate lights; reversing lights have light bulbs

Mirrors
Exterior mirrors with integrated LED indicator electrically adjustable, convex, flat or aspherical mirror glass, housings in aluminium look

Exterior mirrors, electrically adjustable and heated
with integrated LED indicator, housing in aluminium look, convex, flat or aspherical mirror glass, incl. heated windscreen washer jets

Exterior mirror, electrically adjustable, heated and folding, including automatic kerb-side function for the exterior mirror on the passenger side
with integrated LED indicator, housing in aluminium look, convex, flat or aspherical mirror glass, incl. heated windscreen washer jets
The automatic kerb-side function tilts the exterior passenger mirror downwards when reverse gear is engaged, giving the driver a better view of the kerb.

Exterior mirror, electrically adjustable, heated and folding, automatically dimming on both sides, including automatic kerb-side function for the exterior mirror on the passenger side
with integrated LED indicator, housing in aluminium look, convex, flat or aspherical mirror glass, incl. heated windscreen washer jets

Exterior mirror, electrically adjustable, heated and folding, automatically dimming on both sides, with memory function including automatic kerb-side function for the exterior mirror on the passenger side
with integrated LED indicator, housing in aluminium look, convex, flat or aspherical mirror glass, incl. heated windscreen washer jets

Interior mirror
dimming

Interior mirror, automatically dimming, with light/rain sensor
for controlling the automatic headlights and the windscreen wipers; includes coming home/leaving home function: delayed switch-off/automatic switch-on of main headlights, rear and number plate lights when parking/opening the vehicle, includes windscreen with grey strip and acoustic glazing for improved windscreen insulation and reduced noise from outside

Closing systems
Central locking with autolock function, radio-operated remote control incorporated into the vehicle key and variable code; with one touch of the button the system opens and locks doors, windows, tailgate and tank flap, additional activation from inside on the driver’s door

Convenience key
access and drive authorisation system; the key only needs to be carried with you; the engine is started and switched off via the engine start-stop button on the centre console, the vehicle is locked from outside via buttons on all 4 door handles. The vehicle can also be opened from the tailgate.

Electronic immobiliser
integrated in the engine control unit, automatically activated by the vehicle key

Tailgate with electric opening and closing function
opening via button on vehicle key, button in the driver’s door panel or soft touch button in the tailgate handle recess, closing via button on inside of tailgate, with closing assistance and programmable tailgate opening angle

Garage door opener (HomeLink)
programmable radio-operated remote control, operating buttons integrated in the interior lighting module; can be used to open many garage doors and exterior gates; allows control of security and lighting systems; in conjunction with MMI navigation plus with program support through the MMI and set-up assistance from appropriate logbook information on the screen. (For information on compatible hand-held transmitters, please contact your Audi partner or visit www.eurohomelink.com).

Anti-theft alarm
including interior monitoring system and tow-away protection via angle of inclination sensors, can be switched off; signal horn for monitoring doors, bonnet and tailgate, independent of vehicle electrical system

Preparation for tracking system
preparation for connecting a tracking system that enables a stolen vehicle to be located; available from Audi Genuine Accessories

Ignition lock
electronic, ignition key features integrated chip, automatically stores relevant vehicle service data (mileage, chassis number and much more)

Roof system
Panoramic glass sunroof in 2 sections, electrical activation to raise and open the front glass section, tinted glass insert; including an electrically operated sun blind for the front and rear passengers, convenient closing from the outside via the central locking system or radio-operated remote control; ensures a comfortable interior that is flooded with light, improved interior climate by means of efficient ventilation

Glazing
Heat-insulating glass green tinted, windscreen made of laminated glass; rear window heated, with timer

Dark-tinted windows (privacy glazing)
Heated rear window with timer, dark-tinted rear window, rear door windows and rear side windows

Windscreen cleaning system
2 speeds, 4-speed adjustable intermittent wipe, touch-wipe function, automatic wash/wipe function, rear window wiper activated when reverse gear is engaged and wipes for the duration of the reversing manoeuvre (when front wipers are switched on).

Sun visors
on the driver and front-passenger sides, can be folded and swivelled, including vanity mirror

Sun visors, movable
on the driver and front-passenger sides, can be folded and swivelled, can also be moved towards the back at the side, including vanity mirror

Sunblind
for the rear door windows, manual

Further exterior equipment
Provision for trailer towing hitch includes the wiring to the spare wheel well, a prepared ABS control unit and reinforced engine cooling. The trailer towing hitch for retrofitting is available from Audi Genuine Accessories.

Trailer towing hitch
mechanically swivelling ball head, forged steel sphere bar and ball head with integrated socket, operated via lever in luggage compartment, control light in luggage compartment and display in instrument cluster to monitor secure attachment of towing hitch; includes trailer stabilisation function via the Electronic Stabilisation Control (ESC). (If using the vehicle with a trailer towing hitch for commercial purposes, a digital tachograph may be required under certain conditions).

High-gloss package
roof frame and window capping strips in anodised aluminium, exterior B and C-pillar trim in high-gloss black

Bumpers in body colour
front and rear in sporty-dynamic design, painted in body colour, S rear diffusor

Roof rails, anodised
for secure transportation, one-piece, no joints, stable and aerodynamic, highlight the coupé-like roof line; including roof crossmember made of anodised, aerodynamically and symmetrically shaped aluminium profile, serve as the basis for roof rack modules such as cycle mount or ski box, removable A suitable roof rack bag for the transport and storage of the basic roof rack is available from Audi Genuine Accessories.

Roof rails, black
for secure transportation, one-piece, no joints, stable and aerodynamic, highlight the coupé-like roof line; including roof crossmember made of anodised, aerodynamically and symmetrically shaped aluminium profile, serve as the basis for roof rack modules such as cycle mount or ski box, removable A suitable roof rack bag for the transport and storage of the basic roof rack is available from Audi Genuine Accessories.

Roof edge spoiler
in a striking, sporty design

Audi Singleframe
radiator grille in platinum grey with horizontal double chrome struts

Exhaust tailpipes
dual-branch design with 2 oval tailpipes each left and right with chrome-plated surrounds

Model name/logo
model name SQ5 on the left-hand side of the tailgate, on the leather-covered sport steering wheel and in the rev counter; TDI logo on the right-hand side of the tailgate, quattro logo on the passenger side of the dashboard, V6T logo on the front wings

Seats/seating comfort
Rear seats with manual backrest angle adjustment, fold-out centre armrest, rear seat backrest can be split and folded 40 : 60 or fully, remote backrest unlocking function via a lever in the luggage compartment side trim, L-shaped head restraints at the rear, manually adjustable

Rear seat bench plus
with manual backrest angle adjustment, adjustable lengthways up to 100 mm to increase luggage compartment space, fold-out centre armrest with 2 cup holders, rear seat backrest can be split-folded 40 : 20 : 40 or fully; includes through-loading facility, remote backrest unlocking function via a lever in the luggage compartment side trim for the 2 outer sections of the backrest (40 % or 60 %), there is no separate remote unlocking function for the smaller central section; head restraints L-shaped at the rear, manually adjustable

4-way lumbar support
electric, for driver and front-passenger seats, with horizontal and vertical adjustment

Front seats, electrically adjustable
electric adjustment for seat height, fore/aft position and seat and backrest angles, with electric 4-way lumbar support

Front seats, electrically adjustable, including memory function for the driver seat

electric seat height, fore/aft position, seat angle and backrest angle adjustment, with electric 4-way lumbar support and 2 different presets for the electrically adjustable driver seat and exterior mirrors

Seat heating, front

heats the seat cushions and backrests; on sport seats or leather upholstery and trim also heats the seat side bolsters; individually adjustable in several stages for driver and front-passenger seats

Seat heating, front and rear

heats the seat cushions and backrests; on sport seats or leather upholstery and trim also heats the seat side bolsters; individually adjustable in several stages for driver and front-passenger seats, additionally available for the rear seats

Centre armrest, front

for driver and front passenger, adjustable lengthways up to 65 mm, adjustable angle, fold-open design, with storage compartment underneath the centre armrest; includes 2 cup holders and a 12 V socket in the centre console

ISOFIX child seat mounting for the outer rear seats
Standard bracket for the practical fastening of child seats in accordance with ISO standards; compatible child seats can be obtained from your Audi partner.

ISOFIX child seat mounting for the front-passenger seat
with passenger airbag deactivation switch

Steering wheels/gear levers/controls

Leather-covered multifunction sport steering wheel in 3-spoke Q design, with shift paddles in aluminium look

with S-emblem and decorative stitching in contrasting colour; with full-size airbag, adjustable for height and reach, includes selector lever knob and gaiter in leather, for operating the basic functions of Audi navigation systems, radios, voice control system, Bluetooth interface, preparation for mobile phone or car phone; shift paddles for changing gear manually

Leather-covered multifunction sport steering wheel in 3-spoke design, flattened at the bottom, with shift paddles in aluminium look

with S-emblem and decorative stitching in contrasting colour; with full-size airbag, adjustable for height and reach, includes selector lever knob and gaiter in leather, for operating the basic functions of Audi navigation systems, radios, voice control system, Bluetooth inter-face, preparation for mobile phone or car phone; shift paddles for changing gear manually

Audi exclusive leather steering wheel rim

Leather for the steering wheel rim is available in all Audi exclusive colours; individual choice of colour for stitching in various Audi exclusive colours with special Audi exclusive seam detail. From quattro GmbH

Audi exclusive leather controls

Leather for the steering wheel rim, selector lever knob and selector lever gaiter is available in all Audi exclusive colours. Individual choice of stitching in various Audi exclusive colours. Stitching on the steering wheel rim with specific Audi exclusive seam detail. From quattro GmbH

Climate control

Automatic air conditioning

with sunlight-dependent control, electronically regu-lates the air temperature, flow rate and distribution, with air intake control and manual recirculation mode, humidity sensor, dust and pollen filter, defroster vents for the windscreen and the side windows, key-coded settings

3-zone deluxe automatic air conditioning

with sunlight-dependent control, electronically controls the air temperature, flow rate and distribution, separate temperature distribution for driver, front-seat passenger and rear compartment, temperature and air distribution adjustable left and right in the front, control panel for setting the temperature in the rear compartment in the rear centre console, automatic recirculation mode by means of air quality sensor, front control panel features digital display, includes rain, light and humidity sensor, combined fine-dust filter, climate control of the glove compartment by means of a control knob in the glove compartment, indirect ventilation, key-coded settings

Auxiliary heating/ventilation

The auxiliary heating heats up the interior and frees the windows from ice; the ventilation system supplies fresh air and reduces the interior temperature; complete with timer and separate radio-operated remote control with radio feedback

Luggage securing and storage systems

Storage compartments

in the front and rear door trims, eyewear compartment in the front interior lighting module above the interior mirror, illuminated glove compartment on the passen-ger side; 2 bag hooks in the luggage compartment

Storage package

includes storage nets on the front-seat backrests, storage compartment under the front seats, net in the front-passenger footwell, lockable glove compartment, luggage net on the luggage compartment floor, net underneath the parcel shelf

Cup holders

2 in the centre console between the front seats, bottle holders for storing up to four 1.5 litre bottles, located in the front and rear door trims

Cup holder, temperature-controlled

in the centre console between the front seats, keeps drinks hot or cold, the 2nd cup holder on the front-passenger side is not temperature-controlled, bottle holders for storing up to four 1.5 litre bottles in the front and rear door trims

Partition net

for fastening on the body side or on the folded-down rear seat backrest, useful when the rear seats are up or folded down on one side, as well as when they are completely folded down, removable

Lashing points

4 in the luggage compartment, for attaching luggage and other objects, attachment points for the luggage net

Reversible mat

for the luggage compartment, velour on one side, rubber on the other, to cover the whole luggage compartment, also when the rear seat backrest is folded down, with fold-out protective film for the loading sill and bumper

Loading floor

removable

Ski/snowboard bag

removable, secured by a strap, for the practical trans- portation of long items, e.g. up to 4 pairs of skis up to 200 cm in length or 2 snowboards

Loading sill protector in stainless steel

Dirt collecting tray

underneath the loading floor; smaller version if ordering a sound system with subwoofer at the same time

Rail system with load-securing kit

in the luggage compartment, with telescopic rod, attachment strap and 4 variable lashing points for individual partitioning of the luggage compartment and for securing objects

Luggage compartment cover

removable

Further interior equipment

Floor mats, front and rear
in velour, matched to carpet colour

Audi exclusive floor mats

Individual choice of colour for floor mats and leather piping from the range of Audi exclusive colours.

From quattro GmbH

Audi exclusive carpet including floor mats

Individual choice of colour for carpet, floor mats and leather piping from the range of Audi exclusive colours. From quattro GmbH

Door sill trims

with aluminium inserts and SQ5 emblem

Window controls

electric front and rear, with safety system to limit closing force, one-touch open/close with convenience function

Cigarette lighter and ashtrays

ashtray in the centre console front and rear, cigarette lighter at front

Grab handles

cushioned action, folding, 4 handles recessed into the roof, clothes hooks on the rear grab handles

12V sockets

on the rear centre console and in the luggage compartment

Aluminium look in the interior

on the light switch, air conditioning, MMI rotary/push-button control, vents, mirror adjustment switch, window controls, electromechanical parking brake, around the selector lever gaiter

Pedals and footrest in aluminium look

underlines the sporty character

MMI® and navigation systems

MMI® navigation

with navigation data (DVD), 6.5-inch colour display with high-quality map representation and numerous detailed display options, voice control (destination entry via spelling), dynamic route guidance with TMC (where available), MP3 and WMA-capable DVD player for navigation data (DVD), can also be used for music CDs, additional arrow display in the driver information system, radio with triple tuner, phase diversity, 2 SDHC card readers (for up to 32 GB), AUX-IN connection, 8 passive loudspeakers, total output 80 watts

Navigation data (DVD)

contains navigation data for the following countries (where digitised): Albania, Andorra, Austria, Belarus, Belgium, Bosnia-Herzegovina, Bulgaria, Croatia, Czech Republic, Denmark, Estonia, Finland, France, Germany, Gibraltar, Greece, Hungary, Iceland, Ireland, Italy, Kosovo, Latvia, Liechtenstein, Lithuania, Luxembourg, Macedonia, Moldova, Monaco, Montenegro, the Netherlands, Norway, Poland, Portugal, Romania, Russia, San Marino, Serbia, Slovakia, Slovenia, Spain (including the Canary Islands), Sweden, Switzerland, the UK, Ukraine, Vatican City

MMI® navigation plus

including navigation data (hard drive), high-resolution 7-inch colour display with high-quality map display and topographical map colour, navigation-based speed limit and display of lots of sightseeing information and 3D city models, choice of 3 alternative routes provided, scrolling along the route, joystick map manoeuvring function in the control button, spoken TMCpro reports, split-screen route information (manoeuvring points, points of interest on motorways, TMCpro on route), de-tailed junction map and lane recommendations, dynamic route guidance with TMCpro (where available), voice con-trol system (destination entry by means of whole-word input in a sentence), additional arrow display in the driv-er information system with colour display; 8 passive loudspeakers, total output 80 watts, radio with triple tuner and phase diversity, hard drive can also be used to store music (20 GB), MP3, WMA, AAC and MPEG-4-capable DVD player can also be used for music and video DVDs, 2 SDHC card readers (for up to 32 GB), AUX-IN connection.

The use of Audi connect supported services (e.g. naviga-tion using Google Earth images¹ and Google Maps Street View, weather and news, Audi traffic information online²) is possible in combination with Bluetooth car phone online.

Navigation data (hard drive)³

contains navigation data for the following countries (where digitised):

Europe: Albania, Andorra, Austria, Belarus, Belgium, Bosnia-Herzegovina, Bulgaria, Croatia, Czech Republic, Denmark, Estonia, Finland, France, Germany, Gibraltar, Greece, Hungary, Iceland, Ireland, Italy, Kosovo, Latvia, Liechtenstein, Lithuania, Luxembourg, Macedonia, Moldova, Monaco, Montenegro, the Netherlands, Norway, Poland, Portugal, Romania, Russia, San Marino, Serbia, Slovakia, Slovenia, Spain (including the Canary Islands), Sweden, Switzerland, the UK, Ukraine, Vatican City;

North America: Bahamas, Canada, Mexico, Puerto Rico, USA (inc. Alaska, Hawaii, Virgin Islands);

other regions: AGCC (Abu Dhabi, Bahrain, Dubai, Qatar, Kuwait, Oman, Saudi Arabia), China, Japan, Hong Kong, Macao, Malaysia, Singapore, Australia, New Zealand, South Africa, South Korea, Taiwan

Driver information system with colour display

A high-resolution colour display provides you with infor-mation from the trip computer, auto check system, scope of display of the MMI system, brake wear indicator at front, clock and digital speed display; the outside temperature display shows an ice crystal at tempera-tures under +5 °C to warn of possible black ice. The inte-grated efficiency program assists you with consumption data overviews, display of additional loads and fuel-saving tips for more economic driving; including atten-tion assist

Attention assist

Part of the driver information system; the attention assist analyses driving behaviour using a range of sensors and if anything indicates that the driver is starting to become inattentive. Steering movements and switch/pedal actuation are recorded and compared with the individual driving patterns of the respective driver. Attention assist warns the driver by means of a display in the driver information system and an acoustic signal. The system is active from 65 km/h and can be deactivated at any time via the car menu.

Radio and TV systems

chorus radio

with CD player, dynamic station list, 30-station memory, FM (VHF) and AM (MW, LW) reception, MMI operating concept, 6.5-inch monochrome screen, speed-dependent volume control, phase diversity, 8 passive loudspeakers (front and rear), total output 80 watts; note: certain car menu settings cannot be made using the chorus radio.

concert radio

with CD player and SDHC memory card reader (up to 32 GB), both MP3, WMA and AAC-capable, dynamic station list, 30-station memory, FM (VHF) and AM (MW, LW) reception, MMI operating concept, 6.5-inch TFT colour screen, TP memo function, speed-dependent volume control, phase diversity, AUX-IN connection, 8 passive loudspeakers (front and rear), total output 80 watts

^[1] Google and the Google logo are registered trademarks of Google Inc.

^[2] Available in Germany, Switzerland, Austria, Belgium, the Netherlands, Luxembourg, the UK, France and Italy.

^[3] Only the navigation data for one region are outputted.

symphony radio

with integrated CD changer for 6 CDs and SDHC memory card reader (up to 32 GB), both MP3, WMA and AAC-capable, dynamic station list, 30-station memory, FM (VHF) and AM (MW, LW) reception, MMI operating concept, 6.5-inch TFT colour screen, TP memo function, speed-dependent volume control, phase diversity, AUX-IN connection, 8 passive loudspeakers (front and rear), total output 80 watts

Digital Audio Broadcasting

In addition to the range of analogue stations, programmes from digitally broadcast radio transmitters with better sound quality can be received according to DAB standard, including DAB+. Display of additional information accompanying the programme (e.g. artist, title, cover) in the form of a slide show and other programme-independent data services (e.g. weather, traffic, news).a In connection with MMI navigation or MMI navigation plus also reception of DMB audio, a second DAB tuner permanently searches for alternative reception frequencies of the set radio station, at the same time the station list is updated. Please note: reception depends on local digital network availability; contents and scope of the additional information depend on provision by the respective radio station.

TV reception

Reception of digitally-broadcast (DVB-T), uncoded television stations (MPEG-2 or MPEG-4 standard), DVB-T audio stations, teletext and Electronic Programme Guide (EPG). External AV-IN connection via adapter cable (available through Audi Genuine Accessories). Please note: TV reception depends on local digital network availability; no picture possible when the vehicle is moving

Audi sound system

6-channel amplifier, 10 speakers including centre speaker in the dashboard and subwoofer in the spare wheel well, total output 180 watts

Bang & Olufsen Sound System

surround sound reproduction via 14 high-performance speakers; 1 centre speaker and 2 midrange speakers in the dashboard; 1 tweeter in each mirror quadrant; 1 woofer in each front door; 2 tweeters and 2 low/midrange units in the rear doors; 2 surround sound speakers in the D-pillar and 1 subwoofer in the spare wheel well, exclusive speaker covers with aluminium trim, dynamic driving noise compensation, 10-channel amplifier; total output 505 watts. 5.1 surround sound reproduction is possible in conjunction with MMI navigation plus and the integrated DVD drive.

CD changer

in the glove compartment, for 6 CDs (MP3 and WMA-capable), shock-resistant, easily accessible, without magazine, each CD can be loaded and changed individually. Music files with digital rights management (DRM) cannot be played.

Audi music interface

for the connection of portable media players such as Apple iPod generation 4 and higher, Apple iPhone (music functionality) as well as USB storage media and MP3 players. The Audi music interface is located in the glove compartment, operated via the MMI or radio controls or a leather-covered multifunction steering wheel. Note: can only be used in conjunction with a special adapter cable (Audi Genuine Accessories). Please contact your Audi partner or visit www.audi.com/mp3 for information on compatible media players. (The separate AUX-IN connection is omitted if Audi music interface is ordered.)

Adapter cable set for Audi music interface

consisting of 2 connecting cables for the connection of iPod/iPhone or data carrier/media player with USB port (Type A); further adapter cables available from Audi Genuine Accessories; visit www.audi.com/mp3 for information on compatibility

Adapter cable set plus for Audi music interface

comprising 2 connection cables for the connection of iPod/iPhone or data carrier/media player with USB connection (type A); further adapter cables available from Audi Genuine Accessories; in connection with iPhone and more recent iPod generations the display of cover art and video functions is possible; depends on the device used; visit www.audi.com/mp3 for information on compatibility

Preparation for Rear Seat Entertainment

includes pre-installation wiring and mounts for the holders in the driver and front-passenger seat backrests. The appropriate Rear Seat Entertainment package (tablet player with holder) is available as a plug-and-play unit from Audi Genuine Accessories.

Telephone and communication

Bluetooth interface

Bluetooth-capable mobile phones can be connected to the vehicle via the interface. Hands-free calls are possible in the vehicle via the microphone; visit www.audi.com/bluetooth for information on compatibility

Preparation for mobile phone (Bluetooth)

comprises a hands-free facility and voice control for telephone functions as well as a preparation for optional mobile-specific charger in the centre console between driver and front-passenger seat; operation via MMI navigation plus, MMI navigation, concert radio, symphony radio, a leather-covered multifunction steering wheel or, where present, via the voice control system; please contact your Audi partner or visit www.audi.com/bluetooth for adapters and information about which mobile phones are compatible.

Bluetooth car phone online

Your Bluetooth-capable mobile phone can be conveniently connected to the vehicle’s internal UMTS module (provided that your mobile has SIM Access Profile), additional SIM card reader located in the surround of the MMI navigation plus. Transfer of phone book entries to the vehicle and management of call lists. Including the Audi connect supported services traffic information online¹, city events^{1, 2}, fuel stop^{1, 2}, point-of-interest search, navigation by means of Google Earth images and Google Maps Street View, destination entry, information services e.g. weather and Wi-Fi hotspot for internet access in the rear using a mobile end device (e.g. laptop). Because of the high data volume involved (currently concerns navigation with the help of Google Earth images and Wi-Fi hotspot in particular) a mobile phone contract including a data flat rate is strongly recommended. The content and scope of the services supported by Audi connect may vary and are only available for mobile phone contracts including a data option and only within the range of the mobile phone network; additional costs arise for the use of these services (charges and billing correspond to your personal mobile phone contract); they are only offered in Europe (in Russia: in the Moscow and St. Petersburg areas only; not offered in Turkey, Cyprus, Malta or Iceland); simple operation via the MMI navigation plus, a leather-covered multifunction steering wheel or the voice control system; for information on compatibility visit www.audi.com/bluetooth (Can only be ordered in conjunction with MMI navigation plus)

Bluetooth car phone

Your Bluetooth-capable mobile phone can be conveniently connected to the vehicle’s internal GSM module (provided the mobile phone has SIM Access Profile), additional SIM card reader located in the surround of the MMI navigation. Transfer of phone book entries to the vehicle and management of call lists; simple operation using MMI navigation, leather-covered multifunction steering wheel or the voice control system; for information on compatibility visit www.audi.com/bluetooth

Bluetooth car phone

Your Bluetooth-capable mobile phone can be conveniently connected to the vehicle’s internal GSM module (provided the mobile phone has SIM Access Profile), additional SIM card reader located in the surround of the MMI navigation. Transfer of phone book entries to the vehicle and management of call lists; simple operation using MMI navigation, leather-covered multifunction steering wheel or the voice control system; for information on compatibility visit www.audi.com/bluetooth

Handset, front, for the Bluetooth car phone online

with colour display and integrated SIM card reader, for making private phone calls; easy writing of text messages thanks to automatic word recognition; handset is stored in the front centre console

Assistance systems

adaptive cruise control

automatic distance control (control range 30–200 km/h); working within system limits, it uses a radar sensor to detect vehicles ahead and maintains the distance by automatic braking and accelerating; 4 distance levels and different driving modes can be selected individually; including Audi pre sense front: Audi braking guard warns the driver about a detected imminent collision with the vehicle in front through an extended brake assist feature; extended by the function of maximum deceleration: this is initiated at speeds below 30 km/h if there is a danger of collision with a stationary or moving vehicle in order to avoid this collision if possible.

Audi side assist

lane change assistant, working within system limits at speeds of 30 km/h and above, the system uses radar technology to monitor the area on the left, right and behind the moving vehicle and informs or warns the driver by means of an LED display in both exterior mirrors if the Audi side assist has detected another vehicle assessed as critical for lane-changing

Audi active lane assist

lane compliance assistant, helps the driver within system limits to keep comfortably in lane (operating range 60250 km/h). If the system is activated and ready and the driver has not operated the indicators, the Audi active lane assist will guide the vehicle within recognised lane boundary lines by means of gentle corrective steering intervention; the driver can choose whether to be monitored continuously or just shortly before crossing the traffic lane marker (choice of earlier or later steering time); additional steering vibration can be adjusted if the driver wishes

Hold assist

holds the vehicle stationary for unlimited periods after stopping, on almost every uphill and downhill gradient. The system is activated by push-button and allows the driver to drive away easily and comfortably without having to operate the electromechanical parking brake.

Hill descent control

A component of ECS; the hill descent maintains selected speed on downhill drives.

Parking system, rear

makes reverse parking easier within system limits by indicating acoustically how far away the vehicle is from an object detected behind the vehicle; measurement is by ultrasonic sensors concealed in the bumper

Parking system plus

acoustic and visual parking system for the front and rear shown on the MMI display; measurement is by ultrasonic sensors concealed in the bumpers

Parking system plus with reversing camera

acoustic and visual parking system for front and rear, image of area behind the vehicle shown on the MMI display, with dynamic display modes showing the calculated path (steer-angle dependent); includes switchable display with help lines and guidelines for parking in perpendicular parking spaces and identification of point at which to apply opposite lock when parallel parking, rear-view camera concealed in the handle strip of the tailgate

Assistance package

The assistance packages contains the functions of the following assistance systems: parking system plus (upgrade option to parking system plus with rearview camera), Audi active lane assist and adaptive cruise control

cruise control

at speeds of 30 km/h and above, the system keeps the set speed constant, provided that engine power and engine braking effect permit it; also features active braking intervention, e.g. when driving downhill; operated via separate steering column stalk; set speed displayed in the driver information system

Suspensions/brakes

Audi drive select

changes vehicle characteristics by, e.g., adapting steering assistance, accelerator and gear changing characteristics. The system also influences other optional equipment; available modes: comfort, auto, dynamic, efficiency and – in conjunction with an MMI navigation system – individual. The efficiency mode shifts the engine, automatic transmission, climate control and optional adaptive cruise control or cruise control to a consumption-improved basic setting.

Dynamic steering

When changing lanes, parking and cornering, this system improves comfort and handling by dynamically regulating steering according to the driving situation. In addition to adaptation of the steering effort (as with the electromechanical power steering), the steering angle is also adapted (steering ratio). The system is also supported further by vehicle stabilisation through ESC.

Brake system

dual-circuit with diagonally-split brake system, Antilock Brake System (ABS) with Electronic Brake Force Distribution (EBD), Electronic Stabilisation Control (ESC) with roof rack detection and brake assist, tandem brake booster, disc brakes ventilated at front and rear

Electromechanical parking brake

includes parking brake function when stationary, drive-off assistance function through automatic release when driving away and emergency braking function whilst driving acting on all 4 wheels

S sport suspension

lowered by 30 mm, with stiff spring and damper tuning for more direct contact with the road and sporty handling; 5-link lightweight front axle, tubular anti-roll bar, trapezoidal-link rear axle with independent wheel suspension; twin-tube gas-filled shock absorbers and coil springs, front axle carrier rigidly fixed to the body, flexibly mounted axle supports at rear

Brake callipers

painted black, front callipers with SQ5 emblem

Technology/safety

Body, galvanised

(fully-galvanised in areas at risk from corrosion), unitary construction, welded to the floor pan, front and rear areas feature defined crumple zones. (12 year warranty against rust perforation)

Airbags

adaptive front-end collision protection with seat position recognition and full-size airbag for driver and front passenger; side airbags at the front (thorax/pelvis airbags); head airbag system

Side airbags, rear

for the outer seats of the 2nd row of seats (thorax/pelvis airbags), supplement the side impact protection in the doors

Head airbag system

unfolds over the entire length of the side windows in the area of the 1st and 2nd row of seats and protects the passengers in the front and on the outer rear seats in the event of a side impact

Integrated head restraint system

In the event of a rear-end collision, the design of the seats stabilises the upper torso and provides better support for the head. This increases the level of protection and reduces the risk of a whiplash injury

^[1] The city events and fuel stop services supported by Audi connect require clearance. The Audi connect service news online requires clearance plus individual configuration. Both procedures can be carried out done following registration on the myAudi platform under www.audi.com/myAudi. The usage rights of the services mentioned and the traffic information online service are limited to 36 months following initial activation in the vehicle (providing this takes place within 6 months of vehicle registration; otherwise corresponding shortening of the usage rights). Your Audi partner will be happy to inform you about possible extension options and any costs these may incur.

^[2] For information on when this feature will be available, please contact your Audi partner.

Instrument cluster

S-specific with grey dials, white needles, needle hubs in aluminium look, SQ5 logo in 3D look, with adjustable lighting, electronic speedometer with odometer and trip odometer, rev counter, clock (GPS clock in conjunction with MMI navigation plus), coolant temperature display and fuel gauge

Safety steering column

includes a shunt mechanism with damping function to supplement the protection offered by the seat belts and airbags

Seat belts

3-point inertia reel seat belts for all seats, with belt force limiters, seat belt tensioners and belt height adjustment at front; front seat-belt reminder, belts matched to the interior colour

Warning triangle

with bracket on the inside of the tailgate

First-aid kit

in the side trim of the luggage compartment

Anti-Slip Regulation (ASR)

for good traction, reduces the spinning of the drive wheels

Electronic Differential Lock (EDL)

On surfaces with varying levels of grip, this start-off assistant automatically brakes the drive wheels on any surface that is too slippery, thereby ensuring smooth, powerful progress; operates at speeds up to approx. 100 km/h.

Electronic Stabilisation Control (ESC)

with roof rack detection and offroad detection, networks the ABS, EBD, ASR and EDL with its own sensors and compares the driving data with reference data; provides better stability at all speeds by targeted braking of individual wheels and intervention in the engine management system. The system automatically detects if a roof rack is fitted and adapts the ESC accordingly.

Electromechanical power steering

maintenance-free rack & pinion steering with speed-dependent power steering; precise steering feel at high speeds, excellent assistance when parking

quattro®

permanent all-wheel drive with asymmetric/dynamic torque distribution, self-locking centre differential with wheel-selective torque distribution, distributes the drive force depending on the driving situation to each individual wheel for controlled handling

Misfuelling protection

mechanically prevents incorrect fuelling of diesel vehicles with petrol

Recuperation

Increasing the generator voltage converts kinetic energy into usable electrical energy when the vehicle is coasting or braking. This energy is used to assist the generator during subsequent acceleration, saving up to 3 % fuel.

Start-stop system

helps to reduce fuel consumption and CO₂ emissions by switching off the engine when the vehicle is at a standstill, e.g. at traffic lights. The start process is initiated as soon as the foot brake is released for moving off.

tiptronic

8-speed automatic transmission with Dynamic Shift Program DSP, can be operated via the shift paddles behind the steering wheel or the selector lever. In automatic mode the driver can choose between the programs D (normal) and S (sport).

Audi Extended Warranty**Audi Extended Warranty**

can only be ordered directly and on purchase of a new car; is a consistent continuation of the manufacturer's guarantee so that you are protected against risk and can control servicing costs even after the first 2 years. 9 combinations of service life and mileage can be selected:

Additional 1 year Audi Extended Warranty, maximum total mileage 30,000 km

Additional 1 year Audi Extended Warranty, maximum total mileage 60,000 km

Additional 1 year Audi Extended Warranty, maximum total mileage 90,000 km

Additional 2 years Audi Extended Warranty, maximum total mileage 40,000 km

Additional 2 years Audi Extended Warranty, maximum total mileage 80,000 km

Additional 2 years Audi Extended Warranty, maximum total mileage 120,000 km

Additional 3 years Audi Extended Warranty, maximum total mileage 50,000 km

Additional 3 years Audi Extended Warranty, maximum total mileage 100,000 km

Additional 3 years Audi Extended Warranty, maximum total mileage 150,000 km

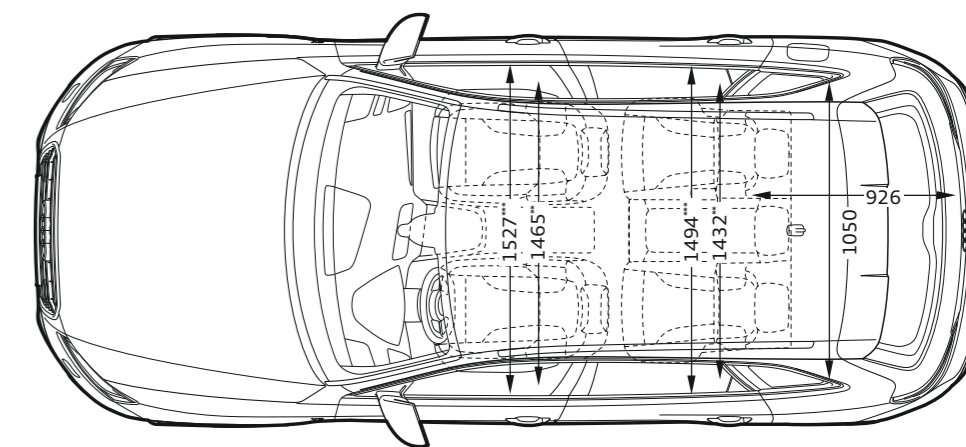
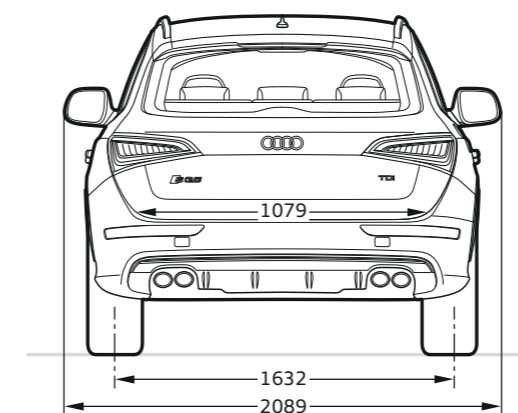
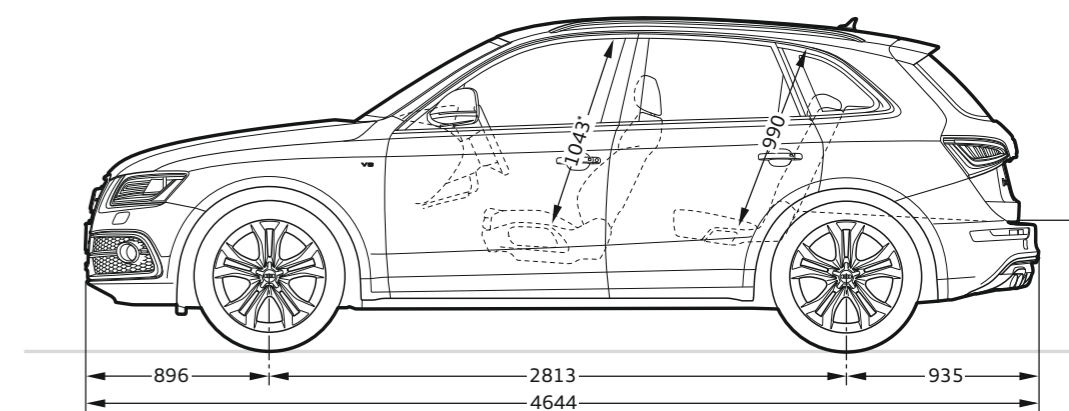
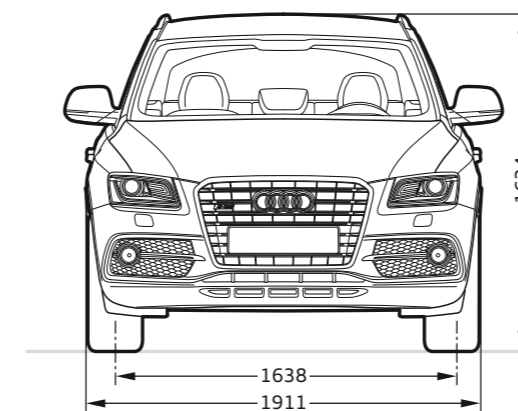
Model	SQ5 TDI	
Engine type	V6 diesel engine with common rail injection system and 2-stage turbocharging	
Displacement in cc (valves per cylinder)	2967 (4)	
Max. output ¹ in kW at rpm	230/3900-4500	
Max. torque in Nm at rpm	650/1450-2800	
Power transmission/wheels		
Drive type	quattro® permanent all-wheel drive	
Transmission type	8-speed tiptronic	
Wheels	Cast aluminium wheels, 8.5 J x 20	
Tyres	255/45 R 20	
Weights/capacities		
Unladen weight ² in kg	1995	
Gross vehicle weight in kg	2530	
Permissible roof load/nose weight in kg	75/100	
Fuel tank capacity, approx. in l	75	
Performance/consumption³		
Top speed in km/h	250	
Acceleration 0-100 km/h in s	5.1	
Fuel grade	Sulphur-free diesel ⁴	
Fuel consumption ⁵ in l/100 km	urban	7.6
	extra-urban	6.4
	combined	6.8
CO ₂ emissions ⁶ in g/km	urban	199
	extra-urban	168
	combined	179
Emission standard	EU5	

Notes

- ¹ The figure given was calculated using the specified measuring procedure (current version of Directive 80/1269/EEC).
- ² Unladen vehicle weight includes driver (68 kg), 7 kg of luggage and with fuel tank 90 % full, calculated in accordance with the current version of EC Directive 92/21/EEC. Optional equipment may increase the car's unladen weight and drag coefficient, whereupon the possible payload limit and the top speed will be reduced accordingly.
- ³ A vehicle's fuel consumption and CO₂ emissions do not just depend on how efficiently the vehicle uses the fuel, but are also influenced by driving behaviour and other non-technical factors. CO₂ is the greenhouse gas primarily responsible for global warming.
- ⁴ We recommend using sulphur-free diesel in accordance with DIN EN 590. If this is not available, use diesel in accordance with DIN EN 590.
- ⁵ The figures given were calculated using the specified measuring procedures. The figures do not refer to one individual vehicle and do not form part of any offer, but rather should be used purely for purposes of comparison between the different vehicle models.

Important note





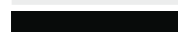




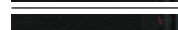
Inspections are due as shown by the service display.



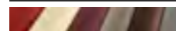



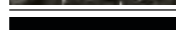



Audi SQ5 TDI**Dimensions in millimetres.**






Dimensions were measured with vehicle at unladen weight.

Luggage compartment volume 540/1560 l (measured by the VDA standard test method using 200 x 100 x 50 mm blocks; second value is with the rear seat backrest folded down and the vehicle loaded up to roof height). Turning circle approx. 11.9 m

*Maximum headroom. **Elbow room width. ***Shoulder room width.

Solid paint finishes	42
 Ibis white	<input type="checkbox"/>
 Brilliant black	<input type="checkbox"/>
Metallic paint finishes	42
 Glacier white, metallic	<input checked="" type="checkbox"/>
 Ice silver, metallic	<input checked="" type="checkbox"/>
 Volcano red, metallic	<input checked="" type="checkbox"/>
 Monsoon grey, metallic	<input checked="" type="checkbox"/>
 Moonlight blue, metallic	<input checked="" type="checkbox"/>
Pearl effect paint finishes	42
 Phantom black, pearl effect	<input checked="" type="checkbox"/>
 Lava grey, pearl effect	<input checked="" type="checkbox"/>
Crystal effect paint finishes	43
 Panther black, crystal effect	<input checked="" type="checkbox"/>
 Estoril blue, crystal effect	<input checked="" type="checkbox"/>
Audi exclusive customised paint finishes	43
 Audi exclusive customised paint finishes	<input checked="" type="checkbox"/>
Full paint finish	<input type="checkbox"/>
Seats	44
Sport seats, front	<input type="checkbox"/>
Climate-controlled comfort seats, front	<input checked="" type="checkbox"/>
Seat upholstery for sport seats, front	44
 Alcantara/leather, black	<input type="checkbox"/>
 Alcantara/leather, lunar silver/black	<input type="checkbox"/>
 Fine Nappa leather, black with contrasting stitching	<input checked="" type="checkbox"/>
 Fine Nappa leather, lunar silver/black with contrasting stitching	<input checked="" type="checkbox"/>
 Fine Nappa leather, magma red/black with contrasting stitching	<input checked="" type="checkbox"/>
 Fine Nappa leather, chestnut brown/black with contrasting stitching	<input checked="" type="checkbox"/>
 Audi exclusive leather upholstery and trim	<input checked="" type="checkbox"/>

Seat upholstery for climate-controlled comfort seats, front	46
 Perforated Milano leather, black	<input checked="" type="checkbox"/>
 Perforated Milano leather, chestnut brown	<input checked="" type="checkbox"/>
 Audi exclusive leather upholstery and trim	<input checked="" type="checkbox"/>
Additional equipment	47
Alcantara/leather combination	<input type="checkbox"/>
Perforated Milano leather	<input checked="" type="checkbox"/>
Fine Nappa leather	<input checked="" type="checkbox"/>
Leather-covered armrests in the door trims	<input checked="" type="checkbox"/>
Leather package	<input checked="" type="checkbox"/>
Audi exclusive leather-covered instrument panel cover with contrasting stitching	<input checked="" type="checkbox"/>
Design packages	47
Audi exclusive Alcantara/leather design package with sport seats, front	<input checked="" type="checkbox"/>
Audi exclusive fine Nappa leather design package with sport seats, front	<input checked="" type="checkbox"/>
Audi exclusive fine Nappa leather plus design package with sport seats, front	<input checked="" type="checkbox"/>
Audi exclusive Valcona leather design package with climate-controlled seats, front	<input checked="" type="checkbox"/>
Audi exclusive Valcona leather plus design package with climate-controlled seats, front	<input checked="" type="checkbox"/>
Headlining	47
Audi exclusive headlining in Alcantara black with contrasting stitching	<input checked="" type="checkbox"/>
Headlining in lunar silver cloth	<input type="checkbox"/>
Headlining in black cloth	<input type="checkbox"/>
Headlining in Alcantara, lunar silver	<input checked="" type="checkbox"/>
Headlining in Alcantara, black	<input checked="" type="checkbox"/>
Inlays	48
 Matt brushed aluminium	<input type="checkbox"/>
 Carbon Atlas	<input checked="" type="checkbox"/>
 Audi exclusive carbon	<input checked="" type="checkbox"/>
 Piano finish, black	<input checked="" type="checkbox"/>
 Aluminium/Beaufort, black	<input checked="" type="checkbox"/>
 Inlays painted in body colour	<input checked="" type="checkbox"/>
 Inlays in Audi exclusive wood	<input checked="" type="checkbox"/>

Wheels/tyres	49
 20" cast aluminium wheels in 5-parallel-spoke design	<input type="checkbox"/>
 20" Audi exclusive cast aluminium wheels in 5-twin-spoke offroad design, royal silver	<input checked="" type="checkbox"/>
 20" Audi exclusive cast aluminium wheels in 7-twin-spoke design	<input checked="" type="checkbox"/>
 21" Audi exclusive cast aluminium wheels in 5-twin-spoke star design in titanium look, high-gloss turned finish	<input checked="" type="checkbox"/>
 19" cast aluminium winter wheels in 5-parallel-spoke design	<input checked="" type="checkbox"/>
Anti-theft wheel bolts	<input type="checkbox"/>
Tyre repair kit	<input type="checkbox"/>
Tyre pressure loss indicator	<input checked="" type="checkbox"/>
Vehicle tool kit	<input type="checkbox"/>
Vehicle jack	<input checked="" type="checkbox"/>
Lights	50
xenon plus including headlight cleaning system	<input type="checkbox"/>
Daytime running lights	<input type="checkbox"/>
adaptive light	<input checked="" type="checkbox"/>
High-beam assist	<input checked="" type="checkbox"/>
Interior lighting	<input type="checkbox"/>
Lighting package	<input type="checkbox"/>
Front fog lights	<input type="checkbox"/>
Headlight cleaning system	<input type="checkbox"/>
Light/rain sensor	<input checked="" type="checkbox"/>
LED rear lights	<input type="checkbox"/>

Mirrors	50
Exterior mirrors with integrated LED indicator	<input type="checkbox"/>
Exterior mirrors, electrically adjustable and heated	<input checked="" type="checkbox"/>
Exterior mirror, electrically adjustable, heated and folding, including automatic kerb-side function for the exterior mirror on the passenger side	<input checked="" type="checkbox"/>
Exterior mirror, electrically adjustable, heated and folding, automatically dimming on both sides, including automatic kerb-side function for the exterior mirror on the passenger side	<input checked="" type="checkbox"/>
Exterior mirror, electrically adjustable, heated and folding, automatically dimming on both sides, with memory function including automatic kerb-side function for the exterior mirror on the passenger side	<input checked="" type="checkbox"/>
Interior mirror, dimming	<input type="checkbox"/>
Interior mirror, automatically dimming, with light/rain sensor	<input checked="" type="checkbox"/>
Closing systems	50
Central locking	<input type="checkbox"/>
Convenience key	<input checked="" type="checkbox"/>
Electronic immobiliser	<input type="checkbox"/>
Tailgate with electric opening and closing function	<input checked="" type="checkbox"/>
Garage door opener (HomeLink)	<input checked="" type="checkbox"/>
Anti-theft alarm	<input checked="" type="checkbox"/>
Preparation for tracking system	<input checked="" type="checkbox"/>
Ignition lock	<input type="checkbox"/>
Roof system	51
Panoramic glass sunroof	<input checked="" type="checkbox"/>
Panoramic glass sunroof	51
Heat-insulating glass	<input type="checkbox"/>
Dark-tinted windows (privacy glazing)	<input checked="" type="checkbox"/>
Windscreen cleaning system	<input type="checkbox"/>
Sun visors	<input type="checkbox"/>
Sun visors, movable	<input checked="" type="checkbox"/>
Sunblind	<input checked="" type="checkbox"/>
Further exterior equipment	51
Provision for trailer towing hitch	<input checked="" type="checkbox"/>
Trailer towing hitch	<input checked="" type="checkbox"/>
High-gloss package	<input type="checkbox"/>

Standard equipment Optional equipment

Country-specific variations possible. Please find out from your local Audi partner which equipment is standard and what optional equipment is available in your country.

Bumpers in body colour	<input type="checkbox"/>
Roof rails, anodised	<input type="checkbox"/>
Roof rails, black	<input type="checkbox"/>
Roof edge spoiler	<input type="checkbox"/>
Audi Singleframe	<input type="checkbox"/>
Exhaust tailpipes	<input type="checkbox"/>
Model name/logo	<input type="checkbox"/>
Seats/seating comfort	51
Rear seats	<input type="checkbox"/>
Rear seat bench plus	<input checked="" type="checkbox"/>
4-way lumbar support	<input type="checkbox"/>
Front seats, electrically adjustable	<input type="checkbox"/>
Front seats, electrically adjustable, including memory function for the driver seat	<input checked="" type="checkbox"/>
Seat heating, front	<input checked="" type="checkbox"/>
Seat heating, front and rear	<input checked="" type="checkbox"/>
Centre armrest, front	<input type="checkbox"/>
ISOFIX child seat mounting for the outer rear seats	<input type="checkbox"/>
ISOFIX child seat mounting for the front-passenger seat	<input checked="" type="checkbox"/>
Steering wheels/gear levers/controls	52
Leather-covered multifunction sport steering wheel in 3-spoke Q design, with shift paddles in aluminium look	<input type="checkbox"/>
Leather-covered multifunction sport steering wheel in 3-spoke design, flattened at the bottom, with shift paddles in aluminium look	<input checked="" type="checkbox"/>
Audi exclusive leather steering wheel rim	<input checked="" type="checkbox"/>
Audi exclusive leather controls	<input checked="" type="checkbox"/>
Climate control	52
Automatic air conditioning	<input type="checkbox"/>
3-zone deluxe automatic air conditioning	<input checked="" type="checkbox"/>
Auxiliary heating/ventilation	<input checked="" type="checkbox"/>
Luggage securing and storage systems	52
Storage compartments	<input type="checkbox"/>
Storage package	<input checked="" type="checkbox"/>
Cup holders	<input type="checkbox"/>

Cup holder, temperature-controlled	<input checked="" type="checkbox"/>
Partition net	<input type="checkbox"/>
Lashing points	<input type="checkbox"/>
Reversible mat	<input checked="" type="checkbox"/>
Loading floor	<input type="checkbox"/>
Ski/snowboard bag	<input checked="" type="checkbox"/>
Loading sill protector in stainless steel	<input type="checkbox"/>
Dirt collecting tray	<input checked="" type="checkbox"/>
Rail system with load-securing kit	<input checked="" type="checkbox"/>
Luggage compartment cover	<input type="checkbox"/>
Further interior equipment	53
Floor mats, front and rear	<input type="checkbox"/>
Audi exclusive floor mats	<input checked="" type="checkbox"/>
Audi exclusive carpet including floor mats	<input checked="" type="checkbox"/>
Door sill trims	<input type="checkbox"/>
Window controls	<input type="checkbox"/>
Cigarette lighter and ashtrays	<input type="checkbox"/>
Grab handles	<input type="checkbox"/>
12V sockets	<input type="checkbox"/>
Aluminium look in the interior	<input type="checkbox"/>
Pedals and footrest in aluminium look	<input type="checkbox"/>
MMI® and navigation systems	53
MMI® navigation	<input checked="" type="checkbox"/>
Navigation data (DVD)	<input checked="" type="checkbox"/>
MMI® navigation plus	<input checked="" type="checkbox"/>
Navigation data (hard drive)	<input checked="" type="checkbox"/>
Driver information system with colour display	<input type="checkbox"/>
Attention assist	<input type="checkbox"/>
Radio and TV systems	53
chorus radio	<input type="checkbox"/>
concert radio	<input checked="" type="checkbox"/>

symphony radio	<input checked="" type="checkbox"/>
Digital Audio Broadcasting	<input checked="" type="checkbox"/>
TV reception	<input checked="" type="checkbox"/>
Audi sound system	<input checked="" type="checkbox"/>
Bang & Olufsen Sound System	<input checked="" type="checkbox"/>
CD changer	<input checked="" type="checkbox"/>
Audi music interface	<input checked="" type="checkbox"/>
Adapter cable set for Audi music interface	<input checked="" type="checkbox"/>
Adapter cable set plus for Audi music interface	<input checked="" type="checkbox"/>
Preparation for Rear Seat Entertainment	<input checked="" type="checkbox"/>
Telephone and communication	54
Bluetooth interface	<input checked="" type="checkbox"/>
Preparation for mobile phone (Bluetooth)	<input checked="" type="checkbox"/>
Bluetooth car phone online	<input checked="" type="checkbox"/>
Bluetooth car phone	<input checked="" type="checkbox"/>
Handset, front, for the Bluetooth car phone online	<input checked="" type="checkbox"/>
Assistance systems	55
adaptive cruise control	<input checked="" type="checkbox"/>
Audi side assist	<input checked="" type="checkbox"/>
Audi active lane assist	<input checked="" type="checkbox"/>
Hold assist	<input checked="" type="checkbox"/>
Hill descent control	<input type="checkbox"/>
Parking system, rear	<input checked="" type="checkbox"/>
Parking system plus	<input checked="" type="checkbox"/>
Parking system plus with reversing camera	<input checked="" type="checkbox"/>
Assistance package	<input checked="" type="checkbox"/>
cruise control	<input checked="" type="checkbox"/>
Suspensions/brakes	55
Audi drive select	<input checked="" type="checkbox"/>
Dynamic steering	<input checked="" type="checkbox"/>
Brake system	<input type="checkbox"/>

Electromechanical parking brake	<input type="checkbox"/>
S sport suspension	<input type="checkbox"/>
Brake callipers	<input type="checkbox"/>
Technology/safety	55
Body, galvanised	<input type="checkbox"/>
Airbags	<input type="checkbox"/>
Side airbags, rear	<input checked="" type="checkbox"/>
Head airbag system	<input type="checkbox"/>
Integrated head restraint system	<input type="checkbox"/>
Instrument cluster	<input type="checkbox"/>
Safety steering column	<input type="checkbox"/>
Seat belts	<input type="checkbox"/>
Warning triangle	<input checked="" type="checkbox"/>
First-aid kit	<input checked="" type="checkbox"/>
Anti-Slip Regulation (ASR)	<input type="checkbox"/>
Electronic Differential Lock (EDL)	<input type="checkbox"/>
Electronic Stabilisation Control (ESC)	<input type="checkbox"/>
Electromechanical power steering	<input type="checkbox"/>
quattro®	<input type="checkbox"/>
Misfuelling protection	<input type="checkbox"/>
Recuperation	<input type="checkbox"/>
Start-stop system	<input type="checkbox"/>
tiptronic	<input type="checkbox"/>
Audi Extended Warranty	56
Audi Extended Warranty	<input checked="" type="checkbox"/>

Equipment for the Audi SQ5 TDI illustrated (p. 4–23):

Paint finish: panther black, crystal effect

Wheels: Audi exclusive cast aluminium wheels in 5-twin-spoke star design in titanium look, high-gloss turned finish

Seats/seat upholstery: sport seats, front, in fine Nappa leather, lunar silver/black with contrasting stitching

Inlays: aluminium/Beaufort wood, black

Standard equipment Optional equipment

Country-specific variations possible. Please find out from your local Audi partner which equipment is standard and what optional equipment is available in your country.

At Audi, you get much more than just an Audi.

Anyone who chooses an Audi chooses a brand that offers its customers more. More individuality. More exclusivity. And more fascination.



www.audi.com

Vorsprung durch Technik, and everything that it entails: the legendary Audi history, dates of unforgettable events and ground-breaking innovations – let your fascination grow with the Audi brand.
> www.audi.com



Audi configurator

Create your own personal Audi using the Audi configurator. All current models, engines, colours and equipment options are available for you to choose from.
> www.audi.com



Audi tv

On Audi tv you can discover new facets of our brand with the four rings: exciting commentaries on our models, technical innovations, fascinating events from the fields of motorsport, tradition, culture and lifestyle. Take a look behind the scenes. The latest news every day. Round the clock.
> www.audi.tv



Audi Bank

Financing. Leasing. Insuring. Whichever new Audi you decide on, every quotation from the Audi Bank is individually tailored to you. Our special offer packages, for example, combine current financing and leasing options with comprehensive insurance protection and thus offer you unlimited mobility.
> www.audi.com



AUDI AG
85045 Ingolstadt
www.audi.com
Valid from September 2012

Printed in Germany
233/1133.26.18

The models and equipment versions illustrated and described in this brochure and some of the services listed are not available in all countries. Some of the cars illustrated are equipped with optional features for which an extra charge is made. Details concerning the delivery specifications, appearance, performance, dimensions and weights, fuel consumption and running costs of the vehicle were correct to the best of our knowledge at the time of going to press. Deviations from the colours and shapes shown in the illustrations may occur. No liability is accepted for errors and printing errors. The right to introduce modifications is reserved. Not to be reproduced, including in part, without the written approval of AUDI AG.

This brochure is printed on paper made from pulp bleached without the use of chlorine.