

BMW 2 Series
Convertible



The Ultimate
Driving Machine

bmw.com.au



THE BMW 2 SERIES CONVERTIBLE.

SPECIFICATION GUIDE.

BMW EfficientDynamics
Less consumption. More driving pleasure.

MODELS.

	Transmission	Cylinder / Capacity cm ³	Power / Torque	Combined fuel consumption l/100km	Acceleration 0-100km/h
Petrol Models					
220i	8-speed sport automatic	4-cylinder 1,998	135 kW 270 Nm	6.1	7.7 sec
230i	8-speed sport automatic	4-cylinder 1,998	185 kW 350 Nm	6.2	5.9 sec
M240i	8-speed sport automatic	6-cylinder 2,998	250 kW 500 Nm	7.4	4.7 sec

BMW recommends the use of RON 95 super unleaded petrol. Unleaded 91 RON and higher with a maximum ethanol content of 10% (E10) may also be used. Output and fuel consumption figures apply to RON98 fuel. All engines meet the EU5 emissions standard. Fuel consumption is determined in accordance with the ECE driving cycle (93/116/EU), which consists of approximately one third urban traffic and two thirds extra-urban driving (based on the distance covered). CO₂ emissions are measured in addition to fuel consumption. Optional equipment (e.g. wider tyres) can have a significant impact on fuel consumption.

■ Standard

While BMW Group Australia has endeavoured to ensure that all information, representations, illustrations and specifications contained in these materials are accurate at the time of publication (12 August 2016), the information is general in nature only. Product features, specifications, models and prices are subject to change without notice. The general information in these materials should always be read in conjunction with information from authorised BMW dealers. To the extent permitted by law, BMW Group Australia excludes all express and implied warranties or guarantees and all liability, whether direct, indirect, special or consequential, arising from negligence or otherwise relating to the use of these materials, any inaccuracies and for any non-compliance by any vehicle with any representation, illustration, specification, description, product feature, colour, or other information contained in these materials.

STANDARD EQUIPMENT.

	220i	230i	240i
Transmission and technology			
8-speed sport automatic transmission , with gearshift paddles on the steering wheel, launch control, and gearshift indicator for manual mode	■	■	■
Adaptive M suspension , shock absorber comfort adjustable by Driving Experience Control, giving a sporting suspension setup without any loss in ride comfort			■
Auto Start/Stop function , reduces fuel consumption by switching off the engine when the vehicle comes temporarily to a stop	■	■	■
BMW TwinPower Turbo 4-cylinder in-line petrol engine with a technology package comprising TwinScroll turbocharger, High Precision Injection, Valvetronic variable valve control and Double-VANOS variable camshaft control	■	■	
M Performance TwinPower Turbo 6-cylinder in-line petrol engine with a technology package comprising TwinScroll turbocharger, High Precision Injection, Valvetronic variable valve control and Double-VANOS variable camshaft control			■
Brake Energy Regeneration , improves fuel efficiency and ensures that the full power of the engine is available for acceleration	■	■	■
Brake-pad wear indicator	■	■	■
Condition Based Service , inspections are scheduled to suit the way in which the car is driven	■	■	■
Double-joint spring strut front axle and multi-arm rear axle	■	■	■
Driving Experience Control , enables adjustment of drivetrain settings (ECO PRO, Comfort, Sport and additional Sport+ mode)	■	■	■
ECO PRO Mode , optimises fuel consumption and shows the potential fuel economy in the instrument cluster	■	■	■
Electric power steering with Servotronic	■		
Electronic differential lock , active in DSC Off mode	■	■	■
Start/Stop button , with keyless ignition	■	■	■
Variable sport steering , incl. Servotronic speed-sensitive assistance		■	■
Safety			
Airbags : driver and front passenger airbags, side airbags for driver and front passenger	■	■	■
Brakes : disc brakes at the front and rear, inner-vented	■	■	■
Central locking with electronic immobiliser, crash sensor; fuel tank filler cap integrated into central locking system	■	■	■
Dynamic braking lights , flashing brake lights and hazard indicator under extreme braking	■	■	■
Dynamic Stability Control (DSC) incl. Antilock Braking System (ABS), Brake Assistant, Cornering Brake Control (CBC) and Dynamic Traction Control (DTC)	■	■	■
Headrests on all seats	■	■	■
M Sport Brakes : 4 piston aluminium fixed calliper and 2 piston rear calliper, Blue with M badge			■
Rollover protection system	■	■	■
Safety body shell : deformation zones at the front and rear, easily-replaceable deformation elements that absorb impacts at speeds up to 15 km/h; integrated side impact protection in doors	■	■	■
Seat belts : three-point seat belts for all rear seats; three-point inertia-reel seat belts in the front with belt tensioners and belt force limiters	■	■	■
Warning triangle and first aid kit	■	■	■
Wheels and tyres			
17" BMW light-alloy wheels (styling dependent on selected BMW Line)	■		
18" BMW light-alloy wheels (styling dependent on Luxury Line or M Sport Package)		■	
18" BMW M light-alloy wheels, Double-spoke styling 436 M , front 7.5 J x 18" with 225/40 R18, rear 8 J x 18" with 245/35 R18 tyres. Snow chains cannot be fitted			■
Locking wheel bolts	■	■	■
Mobility kit			■
Run-flat safety tyres incl. run-flat indicator	■	■	

■ Standard

While BMW Group Australia has endeavoured to ensure that all information, representations, illustrations and specifications contained in these materials are accurate at the time of publication (12 August 2016), the information is general in nature only. Product features, specifications, models and prices are subject to change without notice. The general information in these materials should always be read in conjunction with information from authorised BMW dealers. To the extent permitted by law, BMW Group Australia excludes all express and implied warranties or guarantees and all liability, whether direct, indirect, special or consequential, arising from negligence or otherwise relating to the use of these materials, any inaccuracies and for any non-compliance by any vehicle with any representation, illustration, specification, description, product feature, colour, or other information contained in these materials.

STANDARD EQUIPMENT.

	220i	230i	M240i
Exterior design			
BMW Individual High-Gloss Shadow Line or Chrome Line Exterior (dependent on selected BMW Line)	■	■	
BMW Individual High-Gloss Shadow Line			■
Exhaust pipe , round, left (styling dependent on selected BMW Line)	■		
Exhaust pipe , round, dual, left		■	
Exhaust pipe , round, left and right, Black Chrome			■
M Aerodynamics Package , embellishers in Ferric Grey			■
Mirror caps in Ferric Grey			■
Ornamental front grille (styling dependent on selected BMW Line)	■		
Ornamental front grille (styling dependent on Luxury Line or M Sport Package)		■	
Ornamental front grille , 8 kidney grille slats in Black high-gloss			■
Softtop roof	■	■	■
Note: available in Black, Anthracite with Silver effect, or Brown with Silver effect			

ConnectedDrive			
Intelligent Emergency Call , BMW ConnectedDrive automated transmission of vehicle accident information and telephone call for assistance to the BMW ConnectedDrive Call Centre. Emergency services are informed by the BMW ConnectedDrive Call Centre on behalf of the customer and deployed if required. Manual emergency call can also be initiated via SOS button	■	■	■
TeleServices , automated transmission of service-related vehicle data to your preferred service dealer. Includes Battery Guard and BMW Breakdown calls to Roadside Assistance	■	■	■
ConnectedDrive Services: internet-based services including BMW Online (News, Weather, Google local search, Office, Apps), and the BMW Connected App. 3 year subscription	■	■	■
Remote Services: remote door lock/unlock, ventilation control, headlight flash, Google local search with send-to-car function and vehicle finder	■	■	■
Real Time Traffic Information , BMW ConnectedDrive display of current traffic information in the navigation map with expected travel time delays to your destination. Includes suggestions on alternative routes. 3 year subscription	■	■	■

Driver assistance			
Cruise Control with braking function	■	■	■
Driving Assistant with Approach Control Warning, Lane Departure Warning, Pedestrian Warning, light city braking function and Attentiveness Assistant. Includes instrument cluster with extended contents	■	■	■
Park Distance Control (PDC) , rear	■		
Park Distance Control (PDC) , front and rear		■	■
Rear View Camera	■	■	■
Speed Limit Device , enables settings of desired maximum speed, can be overridden at any time	■	■	■

Light and sight			
Bi-Xenon headlights with headlight washer system	■	■	■
Adaptive headlights with variable light distribution			■
Anti-Glare High-Beam Assist			■
Fog lights, front and rear	■	■	
Fog lights, rear			■
Heat/sun protection glass	■	■	■
Heated exterior mirrors	■	■	■

■ Standard

While BMW Group Australia has endeavoured to ensure that all information, representations, illustrations and specifications contained in these materials are accurate at the time of publication (12 August 2016), the information is general in nature only. Product features, specifications, models and prices are subject to change without notice. The general information in these materials should always be read in conjunction with information from authorised BMW dealers. To the extent permitted by law, BMW Group Australia excludes all express and implied warranties or guarantees and all liability, whether direct, indirect, special or consequential, arising from negligence or otherwise relating to the use of these materials, any inaccuracies and for any non-compliance by any vehicle with any representation, illustration, specification, description, product feature, colour, or other information contained in these materials.

STANDARD EQUIPMENT.

	220i	230i	M240i
Light and sight (cont.)			
Interior lights package , incl. illumination of centre stack, front reading lights, illuminated vanity mirrors for driver and passenger, front ambient light, front footwell lights, handle-area lighting in the door handles, exit lights in the front doors, luggage-compartment light and front door handle shell	■	■	■
Interior and Exterior mirror with automatic anti-dazzle function , driver-side only, includes automatic parking function and electric fold-in function and convex mirror glass for passenger side	■	■	■
Rain sensor , incl. automatic headlight activation	■	■	■
Interior design			
Door sill finishers with BMW designation , front, aluminium	■		
Door sill finishers (styling dependent on Luxury Line or M Sport Package)		■	
Door sill finishers with M designation , front, aluminium			■
Floor mats in Velour	■	■	■
Instrument panel with round dials , for speedometer, rev counter, fuel gauge and on-board computer displays	■	■	■
Interior trim (styling dependent on selected BMW Line)	■		
Interior trim (styling dependent on Luxury Line or M Sport Package)		■	
Interior trim , Aluminium Hexagon with Estoril Blue highlight			■
Upholstery , Sensatec man-made leather	■		
Upholstery , Dakota leather with Sun Reflective Technology		■	■
Comfort and interior equipment			
Automatic air conditioning , with separate temperature controls for driver and front passenger, incl. Automatic Air Recirculation (AAR), microfilter, fogging and solar sensors and rear air vents	■	■	■
Comfort Access System , keyless entry incl. exterior handle area lighting		■	■
Cupholders , 2 front and 2 rear	■	■	■
Fully automatic electric-folding softtop roof , functional at speeds up to 50km/h	■	■	■
Rear seat backrest , with through-loading system	■	■	■
Lumbar support, electric , for driver and front passenger			■
Seat adjustment, electric , with memory function for driver's seat and auto parking function for passenger side exterior mirror		■	■
Seat heating for driver and front passenger		■	■
Sport seats for driver and front passenger , manual seat adjustment, seat height adjustment for driver and front passenger	■	■	■
Steering wheel, Sport leather with multifunction buttons	■	■	
Steering wheel, M leather with multifunction buttons			■
Storage compartments in front doors with bottle holders	■	■	■
Storage package incl. nets on the backs of the front seats, two additional 12V sockets, storage net on the right side of the luggage compartment	■	■	■
AUX-IN connection , incl. 12V socket in the centre console	■	■	■
Bluetooth , enables wireless connection of a compatible Bluetooth mobile phone to the vehicle Check the compatibility of your mobile phone at bmw.com/Bluetooth	■	■	■
Convenience telephony with extended Smartphone connectivity , provision for snap-in adapter (available separately through Genuine BMW Accessories) for charging function and connection to external aerial. Includes extended Bluetooth functionality such as audio streaming, album cover display, pairing of multiple devices and more, depending on the features of the Bluetooth/USB device Check the compatibility of your mobile phone at bmw.com/Bluetooth	■	■	■
DAB+ digital radio tuner , exceptional sound quality, improved reception and a wide range of special-interest channels For information on coverage in your area please visit digitalradioplus.com.au		■	■

■ Standard

While BMW Group Australia has endeavoured to ensure that all information, representations, illustrations and specifications contained in these materials are accurate at the time of publication (12 August 2016), the information is general in nature only. Product features, specifications, models and prices are subject to change without notice. The general information in these materials should always be read in conjunction with information from authorised BMW dealers. To the extent permitted by law, BMW Group Australia excludes all express and implied warranties or guarantees and all liability, whether direct, indirect, special or consequential, arising from negligence or otherwise relating to the use of these materials, any inaccuracies and for any non-compliance by any vehicle with any representation, illustration, specification, description, product feature, colour, or other information contained in these materials.

STANDARD EQUIPMENT.

	220i	230i	M240i
Entertainment, communication and information (cont.)			
Stereo loudspeaker system , 6 loudspeakers, 100W, 6 programmable memory buttons, MP3-compatible CD drive	■	■	
harman/kardon Sound System , 12 loudspeakers, 360W, surround mode, digital amplifier with equalising			■
Instrument cluster with extended contents	■	■	■
Navigation system Business , incl. iDrive Controller with added functionality, high-resolution built-in 6.5" display for showing maps or a combination of maps with directional arrows, an integrated hard disc for navigation data, and includes 3 year subscription for map updates	■		
Navigation system Professional , incl. iDrive Touch Controller, 8.8" colour display, DVD drive, 3D map and arrow display, quick-start function, integrated hard disc, 20GB storage for audio files, and includes 3 year subscription for map updates		■	■
On-board computer , incl. Check Control, and consumption, range, speed and outside temperature on Info Display	■	■	■
Personal Profile , personalisation of important controls	■	■	■
USB audio interface , enables connection of an MP3 player, Apple iPod or USB memory stick via the USB interface	■	■	■

■ Standard

While BMW Group Australia has endeavoured to ensure that all information, representations, illustrations and specifications contained in these materials are accurate at the time of publication (12 August 2016), the information is general in nature only. Product features, specifications, models and prices are subject to change without notice. The general information in these materials should always be read in conjunction with information from authorised BMW dealers. To the extent permitted by law, BMW Group Australia excludes all express and implied warranties or guarantees and all liability, whether direct, indirect, special or consequential, arising from negligence or otherwise relating to the use of these materials, any inaccuracies and for any non-compliance by any vehicle with any representation, illustration, specification, description, product feature, colour, or other information contained in these materials.

SPORT LINE.

220i

7AC	Sport Line	■
Sport Line content		
	17" BMW light-alloy wheels Star-spoke styling 379 , bi-colour Orbit Grey metallic, gloss-lathed finish, 7.5 J x 17" with 225/45 R17 run-flat safety tyres	■
	"Sport" designation left/right on front side panel	■
	Ambience light , front, rear, front footwell, storage centre console compartment, switchable between Orange and Cold White	■
	Exclusive High-Gloss Black trims , front and rear, incl. tailpipe finisher in Black Chrome	■
	Interior trim , Black high-gloss with Coral Red accent lines (4LV)	■
	Ornamental kidney grille , 8 slats, High-Gloss Black	■
	Red detailing on the car key	■
	Speedometer and rev counter with Red chronoscales	■
	Sport leather steering wheel with Red contrast stitching	■
	Upholstery, Sensatec man-made leather , Black (KCSW), Oyster (KCCX) or Black with Red highlight (KCL3)	■
	Window recess covers in matt Black	■
Options exclusive to Sport Line		
2LP	17" BMW light-alloy wheels Y-spoke styling 380 , 7.5 J x 17" with 225/45 R17 run-flat safety tyres	NCO
2L9	18" BMW light-alloy wheels, Double-spoke styling 384 , front 7.5 J x 18" with 225/40 R18, rear 8 J x 18" with 245/35 R18 run-flat safety tyres	□
2XE	Deletion of Red stitching for Sport leather steering wheel	NCO
3BE	High-Gloss Black exterior mirror caps	NCO
3DZ	Deletion of "Sport" designation	NCO
4GH	Interior trim , Pearl Dark with Oxide Silver matt accents	NCO
4GD	Interior trim , Black High-Gloss with Oxide Silver matt highlight	NCO
4FT	Interior trim , Fine Brushed Aluminium with high-gloss Black accent lines	□
4GK	Interior trim , Fine Brushed Aluminium with Oxide Silver matt highlights	□
4F8	Interior trim , Fine-wood 'Fineline Pure' with Oxide Silver matt accent	□
4LC	Interior trim , Fine-wood 'Fineline' Stream with Oxide Silver matt accent lines	□
704	M Sport suspension , stiffer suspension spring and damper setup with vehicle lowered by 10mm	□
760	BMW Individual High-Gloss Shadow Line , incl. front and rear side window trim, mirror base and mirror frame in high-gloss Black	□
LC**	Upholstery, Dakota leather with Sun Reflective Technology , Black (LCSW), Black with Red highlight (LCL3), Oyster with Black colour world (LCOM), Coral Red with Black highlight (LCL5), or Terra (LCB8) Note: 2XE must be specified when Dakota leather Oyster with Black colour world (LCOM)	□

■ Standard □ Optional NCO No Cost Option

While BMW Group Australia has endeavoured to ensure that all information, representations, illustrations and specifications contained in these materials are accurate at the time of publication (12 August 2016), the information is general in nature only. Product features, specifications, models and prices are subject to change without notice. The general information in these materials should always be read in conjunction with information from authorised BMW dealers. To the extent permitted by law, BMW Group Australia excludes all express and implied warranties or guarantees and all liability, whether direct, indirect, special or consequential, arising from negligence or otherwise relating to the use of these materials, any inaccuracies and for any non-compliance by any vehicle with any representation, illustration, specification, description, product feature, colour, or other information contained in these materials.

LUXURY LINE.

		220i	230i
7S2	Luxury Line	□	NCO
Luxury Line content			
	17" BMW light-alloy wheels Y-spoke styling 380 , 7.5 J x 17" with 225/45 R17 run-flat safety tyres	■	
	18" BMW light-alloy wheels, V-spoke styling 387 , front 7.5 J x 18" with 225/40 R18, rear 8 J x 18" with 245/35 R18 run-flat safety tyres		■
	"Luxury" designation left/right on front side panel	■	■
	Ambience light , front, rear, front footwell, centre console compartment, switchable between Orange and Cold White	■	■
	Pearl Chrome detailing on the car key	■	■
	Chrome line exterior	■	■
	Exclusive high-gloss Chrome trims , front and rear, incl. tailpipe finisher	■	■
	Instrument cluster with Pearl Chrome highlight and chronoscaling	■	■
	Interior trim , Fine-wood 'Fineline Stream' with Oxide Silver matt accent (4LC)	■	■
	Ornamental kidney grille , 11 slats in Black matt, Chrome high-gloss	■	■
	harman/kardon Sound System , 12 loudspeakers, 360W, surround mode, digital amplifier with equalising		■
	Lumbar support for driver and front passenger		■
	Upholstery, Dakota leather with Sun Reflective Technology , Black (LCSW), Oyster with Oyster colour world (LCL9), Oyster with Black colour world (LCOM), or Terra (LCB8)	■	■
Options exclusive to Luxury Line			
2L2	18" BMW light-alloy wheels, V-spoke styling 387 , front 7.5 J x 18" with 225/40 R18, rear 8 J x 18" with 245/35 R18 run-flat safety tyres	□	■
3DZ	Deletion of "Luxury" designation	NCO	NCO
4F8	Interior trim , Fine-wood 'Fineline Pure' with Oxide Silver matt accent	NCO	NCO
4FT	Interior trim , Fine Brushed Aluminium with high-gloss Black accent lines	NCO	NCO
4GK	Interior trim , Fine-Brushed Aluminium with Oxide Silver matt accent	NCO	NCO

■ Standard □ Optional NCO No Cost Option

While BMW Group Australia has endeavoured to ensure that all information, representations, illustrations and specifications contained in these materials are accurate at the time of publication (12 August 2016), the information is general in nature only. Product features, specifications, models and prices are subject to change without notice. The general information in these materials should always be read in conjunction with information from authorised BMW dealers. To the extent permitted by law, BMW Group Australia excludes all express and implied warranties or guarantees and all liability, whether direct, indirect, special or consequential, arising from negligence or otherwise relating to the use of these materials, any inaccuracies and for any non-compliance by any vehicle with any representation, illustration, specification, description, product feature, colour, or other information contained in these materials.

M SPORT PACKAGE.

		220i	230i
337	M Sport Package Option code '2PU' must be specified	<input type="checkbox"/>	NCO

M Sport Package content			
	18" BMW M light-alloy wheels Double-spoke styling 461 M , front 7.5 J x 18" with 225/40 R18, rear 8 J x 18" with 245/35 R18 run-flat safety tyres (2PU). Snow chains cannot be fitted	<input checked="" type="checkbox"/>	<input checked="" type="checkbox"/>
	Ambience light , front and rear, front footwell, centre console compartment, switchable between Orange and White	<input checked="" type="checkbox"/>	<input checked="" type="checkbox"/>
	BMW Individual High-Gloss Shadow Line	<input checked="" type="checkbox"/>	<input checked="" type="checkbox"/>
	Estoril Blue detailing on the car key	<input checked="" type="checkbox"/>	<input checked="" type="checkbox"/>
	Exhaust tailpipes , High-Gloss Chrome	<input checked="" type="checkbox"/>	<input checked="" type="checkbox"/>
	Door sill finishers with M designation	<input checked="" type="checkbox"/>	<input checked="" type="checkbox"/>
	Exterior 'M' designation , front left and right	<input checked="" type="checkbox"/>	<input checked="" type="checkbox"/>
	Gearshift lever with M badge , only with optional manual transmission (Z9A)	<input checked="" type="checkbox"/>	<input checked="" type="checkbox"/>
	Instrument cluster with specific gauge-dial printing and chronoscale	<input checked="" type="checkbox"/>	<input checked="" type="checkbox"/>
	Interior trim , Aluminium Hexagon with Estoril Blue matt highlights (4WF)	<input checked="" type="checkbox"/>	<input checked="" type="checkbox"/>
	Ornamental kidney grille , 8 slats, Black High-Gloss	<input checked="" type="checkbox"/>	<input checked="" type="checkbox"/>
	M Aerodynamics Package	<input checked="" type="checkbox"/>	<input checked="" type="checkbox"/>
	M leather steering wheel	<input checked="" type="checkbox"/>	<input checked="" type="checkbox"/>
	M Sport Suspension	<input checked="" type="checkbox"/>	<input checked="" type="checkbox"/>
	M Sport Brakes , 4 piston aluminium fixed-calliper and 2 piston rear calliper, Blue with M badge		<input checked="" type="checkbox"/>
	Upholstery, Dakota leather with Sun Reflective Technology , available in Black (LCSW), Black with Blue contrast stitching (LCNL), Oyster with Oyster Dark highlight (LCOM), Coral Red with Black highlight (LCL5), or Terra (LCB8)	<input checked="" type="checkbox"/>	<input checked="" type="checkbox"/>

Options exclusive to M Sport Package			
B45	Estoril Blue metallic paintwork	<input type="checkbox"/>	<input type="checkbox"/>
21A	18" M light-alloy wheels, Double-spoke styling 461 M in Ferric Grey	<input type="checkbox"/>	<input type="checkbox"/>
2NH	M Sport Brakes , 4 piston aluminium fixed-calliper and 2 piston rear calliper, Blue with M badge	<input type="checkbox"/>	<input checked="" type="checkbox"/>
2VF	Adaptive M suspension , with suspension lowered 10mm and shock absorber comfort adjustable by Driving Experience Control, giving a more sporting suspension setup without any loss in ride comfort	<input type="checkbox"/>	<input type="checkbox"/>
225	Deletion of M Sport Suspension	NCO	NCO
346	Chrome Line Exterior	NCO	NCO
4WG	Interior trim , Aluminium Hexagon with Black High-Gloss highlights	NCO	NCO
4FT	Interior trim , Fine Brushed Aluminium with Black High-Gloss highlights	NCO	NCO
4GD	Interior trim , Black High-Gloss with Oxide Silver matt highlight	NCO	NCO
4GK	Interior trim , Fine Brushed Aluminium with Oxide Silver matt highlights	NCO	NCO
4LC	Interior trim , Fine-wood Finline Stream with Oxide Silver matt highlights	<input type="checkbox"/>	<input type="checkbox"/>
4F8	Interior trim , Fine-wood 'Finline Pure' with Oxide Silver matt accent	<input type="checkbox"/>	<input type="checkbox"/>

■ Standard □ Optional NCO No Cost Option

While BMW Group Australia has endeavoured to ensure that all information, representations, illustrations and specifications contained in these materials are accurate at the time of publication (12 August 2016), the information is general in nature only. Product features, specifications, models and prices are subject to change without notice. The general information in these materials should always be read in conjunction with information from authorised BMW dealers. To the extent permitted by law, BMW Group Australia excludes all express and implied warranties or guarantees and all liability, whether direct, indirect, special or consequential, arising from negligence or otherwise relating to the use of these materials, any inaccuracies and for any non-compliance by any vehicle with any representation, illustration, specification, description, product feature, colour, or other information contained in these materials.

INNOVATIONS PACKAGE.

		220i	230i
Innovations Package			
Z1A	Innovations Package Alternative pricing for 230i with Luxury Line	<input type="checkbox"/>	<input type="checkbox"/>
Innovations Package contents			
Navigation system Professional , incl. iDrive Touch Controller, 8.8" colour display, DVD drive, 3D map and arrow display, quick-start function, integrated hard disc, 20GB storage for audio files, and includes 3 year subscription for map updates		<input checked="" type="checkbox"/>	
DAB+ digital radio tuner , exceptional sound quality, improved reception and a wide range of special-interest channels For information on coverage please visit digitalradioplus.com.au		<input checked="" type="checkbox"/>	
HiFi loudspeaker system , 7 loudspeakers, 205W, 7-channel analogue amplifier with equaliser		<input checked="" type="checkbox"/>	
harman/kardon Sound System , 12 loudspeakers, 360W, surround mode, digital amplifier with equalising Already included in Luxury Line for 230i			<input checked="" type="checkbox"/>
Adaptive headlights with variable light distribution, incl. cornering lights Note: Cornering lights function deleted for M240i and with M Sport Package (337)		<input checked="" type="checkbox"/>	<input checked="" type="checkbox"/>
Anti-Glare High-Beam Assist		<input checked="" type="checkbox"/>	<input checked="" type="checkbox"/>
Park Distance Control (PDC) , front		<input checked="" type="checkbox"/>	
Parking Assistant , uses ultrasonic sensors to identify parallel and perpendicular parking spaces, then steers the vehicle into the space whilst the driver operates the accelerator and brake. Includes Auto PDC, activating automatically even when the car is driving forward		<input checked="" type="checkbox"/>	<input checked="" type="checkbox"/>

COMFORT PACKAGE.

		220i	230i
Comfort Package			
Z1H	Comfort Package	<input type="checkbox"/>	
Comfort Package contents			
Comfort Access System , keyless entry incl. exterior handle area lighting		<input checked="" type="checkbox"/>	
Seat adjustment, electric , with memory function for driver's seat and auto parking function for passenger side exterior mirror		<input checked="" type="checkbox"/>	
Lumbar support, electric , for driver and front passenger		<input checked="" type="checkbox"/>	
Seat heating for driver and front passenger		<input checked="" type="checkbox"/>	

■ Standard □ Optional NCO No Cost Option

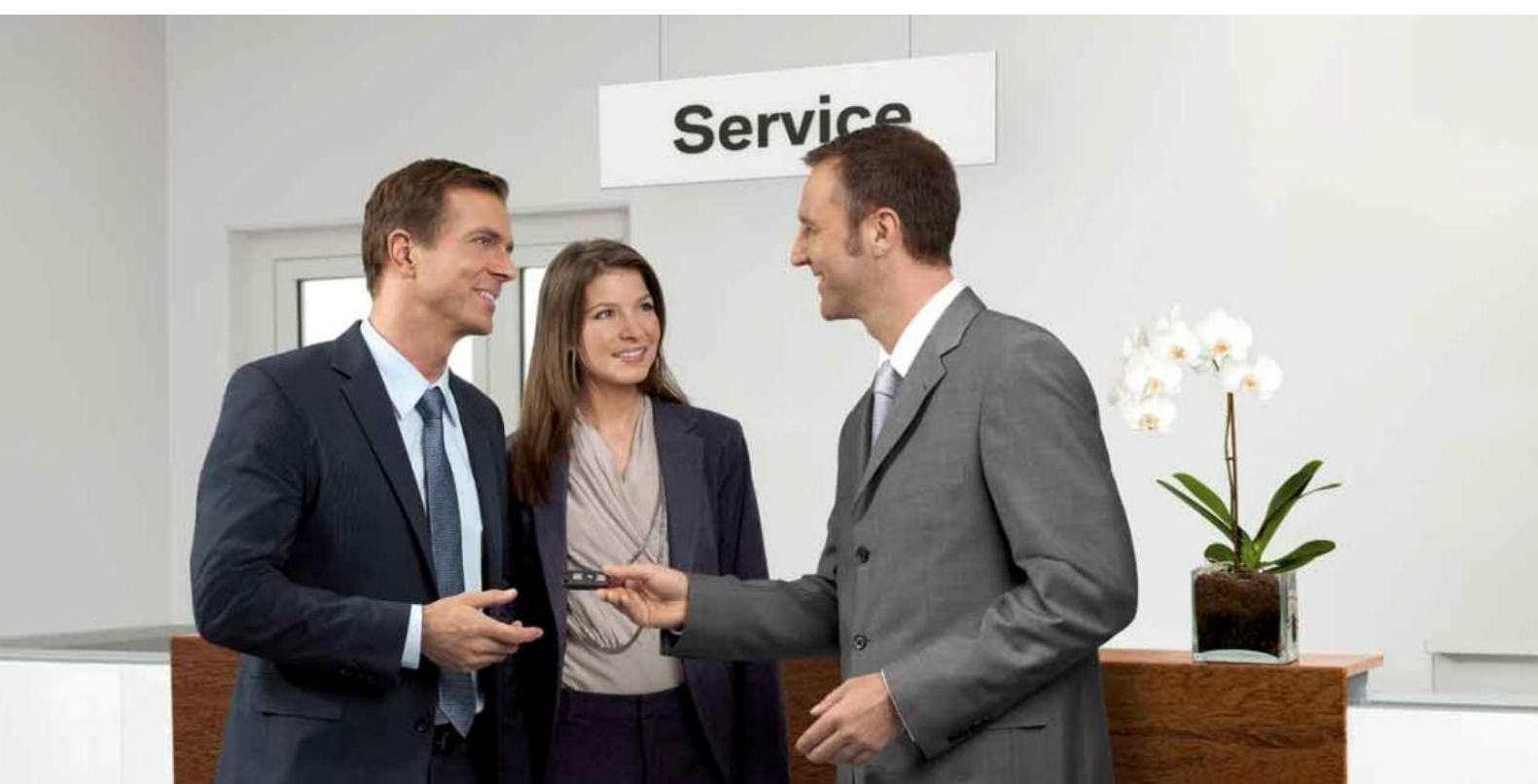
While BMW Group Australia has endeavoured to ensure that all information, representations, illustrations and specifications contained in these materials are accurate at the time of publication (12 August 2016), the information is general in nature only. Product features, specifications, models and prices are subject to change without notice. The general information in these materials should always be read in conjunction with information from authorised BMW dealers. To the extent permitted by law, BMW Group Australia excludes all express and implied warranties or guarantees and all liability, whether direct, indirect, special or consequential, arising from negligence or otherwise relating to the use of these materials, any inaccuracies and for any non-compliance by any vehicle with any representation, illustration, specification, description, product feature, colour, or other information contained in these materials.

OPTIONAL EQUIPMENT.

		220i	230i	M240i
Wheels and tyres				
24A	17" BMW light-alloy wheels Double-spoke style 655 , 7.5 J x 17" with 225/45 R17 run-flat safety tyres	NCO		
2A7	18" BMW light-alloy wheels Double-spoke styling 385 , front 7.5 J x 18" with 225/40 R18, rear 8 J x 18" with 245/35 R18 run-flat safety tyres. Snow chains cannot be fitted Not available with M Sport Package (337)	□	NCO	
Options				
2VB	Tyre pressure monitor , electric monitoring system, displays each tyre pressure and warns of loss at 3 different stages	□	□	□
2VF	Adaptive M suspension , with suspension lowered by 10mm and shock absorber comfort adjustable by Driving Experience Control, giving a more sporting suspension setup without any loss in ride comfort	□	□	■
2VL	Variable sport steering , incl. Servotronic speed-sensitive assistance	□	■	■
248	Steering wheel heating	□	□	□
302	Alarm system with remote control	□	□	□
320	Model designation deletion	NCO	NCO	NCO
346	Chrome Line Exterior			NCO
387	Wind deflector	□	□	□
3YA	Softtop , Anthracite with Silver effect	NCO	NCO	NCO
3YF	Softtop , Brown with Silver effect	NCO	NCO	NCO
488	Lumbar support, electric , for driver and front passenger Included in Luxury Line (7S2) for 230i		□	■
494	Seat heating for driver and front passenger	□	■	■
4FT	Interior trim , Fine Brushed Aluminium with Black High-Gloss highlights			NCO
4LC	Interior trim , Fine-wood Finline Stream with Oxide Silver matt highlights			□
4WG	Interior trim , Aluminium Hexagon with Black High-Gloss highlights			NCO
508	Park Distance Control (PDC), front Included in Innovations Package (Z1A)	□	■	■
5DP	Parking Assistant , uses ultrasonic sensors to identify parallel and perpendicular parking spaces, then steers the vehicle into the space whilst the driver operates the accelerator and brake. Includes Auto PDC, activating automatically even when the car is driving forward			□
654	DAB+ digital radio tuner , exceptional sound quality, improved reception and a wide range of special-interest channels For information on coverage in your area please visit digitalradioplus.com.au Included in Innovations Package (Z1A)	□	■	■
674	harman/kardon Sound System , 12 loudspeakers, 360W, surround mode, digital amplifier with equalising Included in Innovations Package (Z1A) and Luxury Line (7S2) for 230i Alternative pricing for 220i with Innovations Package (Z1A)	□	□	■
676	HiFi loudspeaker system , 7 speakers, 205W analogue amplifier Included in Innovations Package (Z1A) for 220i	□	□	
6AR	Internet , BMW ConnectedDrive independent, in-vehicle internet access via the pre-fitted vehicle SIM card. When stationary, websites can be called up on the Control Display by entering the URL using the iDrive Touch Controller. 1 year subscription	□	□	□
704	M Sport suspension , stiffer suspension spring and damper setup with vehicle lowered by 10mm Included in M Sport Package (337)	□	□	
7S9	ConnectedDrive Freedom Concierge Services : 24/7 assistance via ConnectedDrive call centre at the touch of a button, for assistance with searching for destinations, POIs, and sends these addresses straight to your vehicle. 3 year subscription	□	□	□
Z9A	Manual transmission	NCO	NCO	NCO
	Metallic paintwork	□	□	□

■ Standard □ Optional NCO No Cost Option

While BMW Group Australia has endeavoured to ensure that all information, representations, illustrations and specifications contained in these materials are accurate at the time of publication (12 August 2016), the information is general in nature only. Product features, specifications, models and prices are subject to change without notice. The general information in these materials should always be read in conjunction with information from authorised BMW dealers. To the extent permitted by law, BMW Group Australia excludes all express and implied warranties or guarantees and all liability, whether direct, indirect, special or consequential, arising from negligence or otherwise relating to the use of these materials, any inaccuracies and for any non-compliance by any vehicle with any representation, illustration, specification, description, product feature, colour, or other information contained in these materials.



GENUINE BMW SERVICE.

When you buy a BMW, you can look forward to superb service and comprehensive customer care, with a network of dealerships Australia-wide ready to assist you at any time.

The intelligent BMW Condition Based Servicing (CBS) system monitors the individual components of your vehicle's service requirements and notifies you in advance when a service is due. In conjunction with BMW Teleservices, your vehicle then sends all relevant servicing data captured by CBS directly to your preferred BMW dealer.* Your BMW dealer will contact you to arrange an appointment at a convenient time and can efficiently prepare for your visit by ordering spare parts in advance.

No one knows the innovative technology in your BMW quite like the authorised BMW dealer network. Using the latest sophisticated BMW diagnostic tools, you can rest assured that your BMW will receive the highest level of attention from specialist BMW-trained technicians using only Genuine BMW Parts.

Your BMW service experience can also extend to a BMW Service Inclusive package, which covers your scheduled servicing costs^ for 5 years/80,000kms (whichever comes first) in a single, once-off advanced payment. With BMW Service Inclusive, you can enjoy every second of driving pleasure knowing that your BMW is always getting the service it deserves. BMW Service Inclusive is also fully transferable to future owners and includes a two year manufacturer's warranty on all parts replaced.

All in all, quality and safety are the essence of a Genuine BMW Service. Find out more at bmw.com.au/service

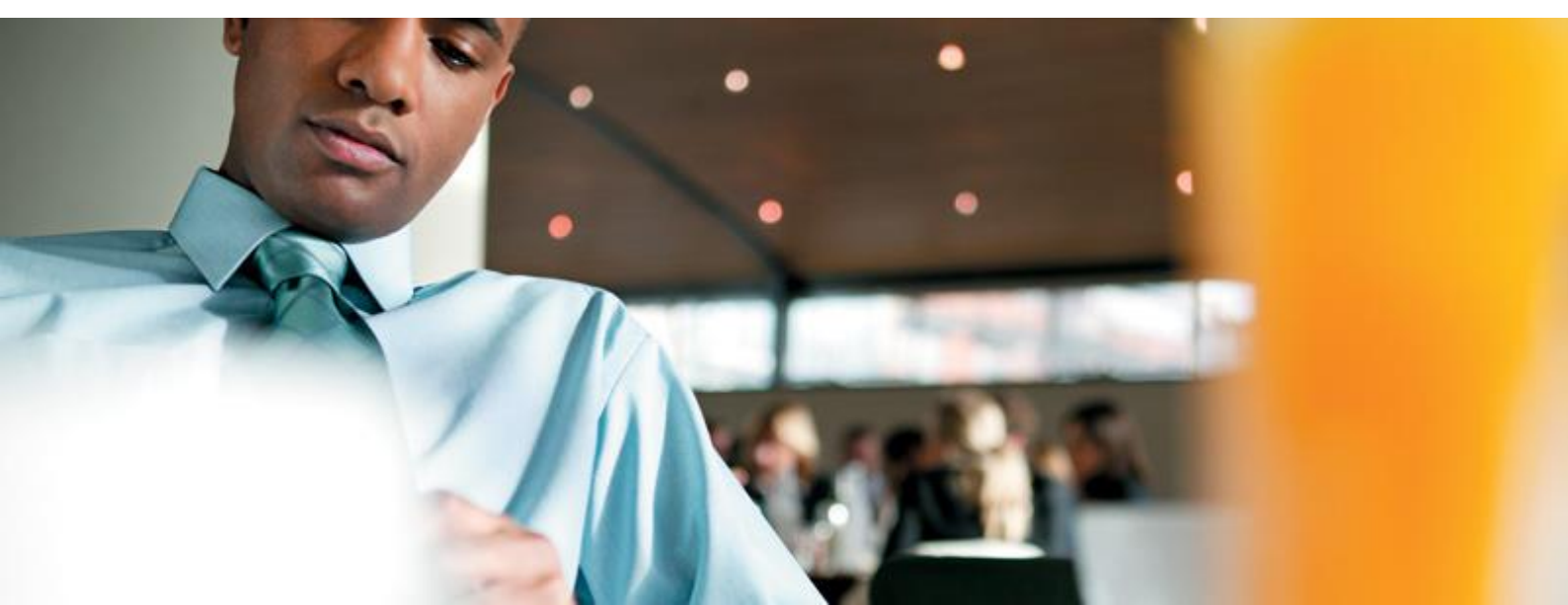


BMW ROADSIDE ASSISTANCE & ACCIDENT MANAGEMENT.

To ensure your BMW delivers you with years of uninterrupted driving pleasure, it comes with the one of the most comprehensive roadside care programmes in Australia. This service is complimentary for three years, so you can rest assured in the knowledge that assistance is at hand 24 hours a day, 365 days a year.

Should you require assistance, simply dial BMW Roadside Assistance & Accident Management on the exclusive toll-free number: **1800 808 111**.

*Preferred Authorised BMW dealer must be registered and configured in the BMW ConnectedDrive portal. ^Normal wear and tear and other exclusions apply.



BMW FINANCIAL SERVICES.

Finance, Lease & Insurance.

BMW Financial Services is your one stop shop for all your Finance, Leasing and Insurance needs. Each BMW dealership has a dedicated Business Manager who can put together a tailored finance and insurance package, to make getting into your next BMW even easier.

FINANCE & LEASE.

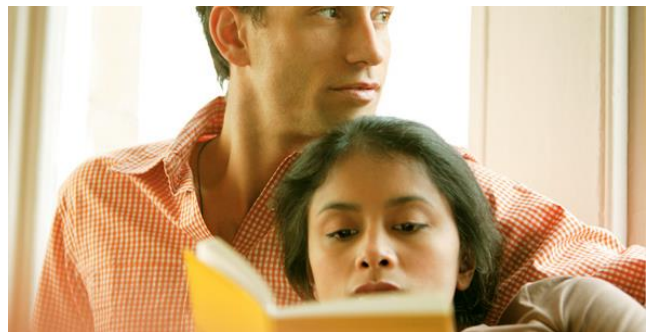
BMW Financial Services offers both loan and lease options to suit your requirements. Whether it is for a company vehicle or a car for your personal use, there are a range of products available to meet your needs.

BMW Financial Services offers competitive rates, finance terms between 24 to 60 months, and no early termination or monthly account keeping fees.

As a BMW Financial Services customer you also have access to the My BMW Account service which provides you with your finance contract information 24 hours a day, 7 days a week. Simply log on at myBMWaccount.com.au

INSURANCE.

BMW Insurance has you covered with an outstanding range of products to protect both your BMW and your BMW finance contract. With BMW Insurance you can not only ensure your BMW stays a BMW, but also enjoy peace of mind while you are on the road and off.



Our range of insurance products includes:



- BMW Motor Vehicle Insurance
- BMW Tyre & Rim Insurance
- BMW Extended Warranty Insurance
- BMW Loan Protection Insurance
- BMW Motor Equity Insurance
- BMW Lease Protect Insurance
- BMW Purchase Price Insurance

Speak to your Business Manager today about our extensive range of Finance and Insurance products.



BMW DRIVING EXPERIENCE.

If you've ever wondered why a BMW is the Ultimate Driving Machine, a BMW Driving Experience course is for you. If you've ever wondered what an Ultimate Driving Machine is capable of, this is the Ultimate test-drive.

Sign up for a BMW Driving Experience course and you will learn what these remarkable vehicles can really do. More importantly, you will also acquire essential skills that will enhance your driving ability and safety.

BMW Driving Experience was introduced in 1977, the first of its kind initiated by an automotive manufacturer to improve the skills, reactions and awareness of drivers.

Today more than ever, the 3-stage programme offers drivers a positive, exhilarating experience, along with an excellent education and an enthralling opportunity to accelerate their driving abilities. This is all conducted behind the wheel of an efficient and dynamic range of Ultimate Driving Machines.

The aim of the programme is to enhance each participant's driving ability by developing attitudes and skills through a structured sequence of courses. Each course takes participants through an increasingly challenging mix of low and high speed driving exercises, that help them respond effectively in emergency situations and become progressively more confident, safe and enthusiastic drivers.

Our courses are conducted at Australia's leading facilities, including the world renowned Phillip Island Grand Prix Circuit. All BMW Driving Experience courses are supervised by highly-trained instructors under the stewardship of Le Mans and Bathurst winner, Geoff Brabham.

BMW Driving Experience offers a range of courses, from the entry-level Intensive course, to the more advanced and exhilarating M Dynamic. The final BMW Driving Experience course on offer is the pinnacle of all, our exclusive Fascination course.

BMW Intensive Driving Experience

An exciting introduction into performance driving, designed for confident drivers.

BMW M Dynamic Driving Experience

After completing our Intensive Training course, drivers can take their skills to another level with this high-performance course designed to test their ability to the fullest.

BMW Fascination Driving Experience

The last course offered in the BMW Driving Experience Programme. Fascination is the goal to reach for those who complete our Intensive and M Dynamic Driving Experience courses. Drivers apply all of the skills they have learned in previous courses, and have one-to-two tuition with our highly trained BMW Driving Experience Instructors.

To find out more about BMW Driving Experience courses and dates, please call **1800 000 269** or email **bmw-drivingexperience@bmw.com.au** or visit **bmw-drivingexperience.com.au**

**BMW 2 Series
Convertible**



**The Ultimate
Driving Machine**

bmw.com.au