

BMW 3 Series  
Sedan



The Ultimate  
Driving Machine

[bmw.com.au](http://bmw.com.au)



# THE BMW 3 SERIES SEDAN.

## SPECIFICATION GUIDE.

**BMW EfficientDynamics**

Less consumption. More driving pleasure.

# MODELS.

	Transmission	Cylinder / Capacity cm <sup>3</sup>	Power / Torque	Combined fuel consumption l/100km	Acceleration 0-100km/h
<b>Petrol Models</b>					
<b>316i</b>	8-speed automatic	4-cylinder 1,598	100kW 220Nm	5.9	9.2 sec
<b>320i</b>	8-speed sport automatic	4-cylinder 1,997	135 kW 270 Nm	6.0	7.3 sec
<b>328i</b>	8-speed sport automatic	4-cylinder 1,997	180 kW 350 Nm	6.3	5.9 sec
<b>335i</b>	8-speed sport automatic	6-cylinder 2,979	225 kW 400 Nm	7.2	5.2 sec

<b>Diesel Models</b>					
<b>320d</b>	8-speed sport automatic	4-cylinder 1,995	135 kW 380 Nm	4.5	7.4 sec

<b>Hybrid Models</b>					
<b>ActiveHybrid 3</b>	8-speed sport automatic	6-cylinder 2,979	250 kW 450 Nm	5.9	5.3 sec

BMW recommends the use of RON 95 super unleaded petrol. Unleaded 91 RON and higher with a maximum ethanol content of 10% (E10) may also be used. Output and fuel consumption figures apply to RON98 fuel. All engines meet the EU5 emissions standard. Fuel consumption is determined in accordance with the ECE driving cycle (93/116/EU), which consists of approximately one third urban traffic and two thirds extra-urban driving (based on the distance covered). CO<sub>2</sub> emissions are measured in addition to fuel consumption. Optional equipment (e.g. wider tyres) can have a significant impact on fuel consumption.

## ■ Standard

While BMW Group Australia has endeavoured to ensure that all information, representations, illustrations and specifications contained in these materials are accurate at the time of publication (6 May 2015), the information is general in nature only. Product features, specifications, models and prices are subject to change without notice. The general information in these materials should always be read in conjunction with information from authorised BMW dealers. To the extent permitted by law, BMW Group Australia excludes all express and implied warranties or guarantees and all liability, whether direct, indirect, special or consequential, arising from negligence or otherwise relating to the use of these materials, any inaccuracies and for any non-compliance by any vehicle with any representation, illustration, specification, description, product feature, colour, or other information contained in these materials.

# STANDARD EQUIPMENT.

	316i	320i	320d	328i	335i	ActiveHybrid 3
<b>Transmission and technology</b>						
<b>8-speed automatic transmission</b> , with gearshift indicator for manual mode	■					
<b>8-speed sport automatic transmission</b> with gearshift paddles on steering wheel, launch control, and gearshift indicator for manual mode		■	■	■	■	
<b>8-speed sport automatic transmission</b> with gearshift paddles on steering wheel and gearshift indicator for manual mode						■
<b>Adaptive M suspension</b> with ride height lowered 10mm and shock absorber comfort adjustable by Driving Experience Control, giving a more sporting suspension setup without any loss in ride comfort		■	■	■	■	■
<b>Auto Start/Stop function</b> , reduces fuel consumption by switching off the engine when the vehicle comes temporarily to a stop	■	■	■	■	■	■
<b>BMW TwinPower Turbo four-cylinder petrol engine</b> combining one twin-scroll turbocharger with Valvetronic, Double-VANOS and High Precision Injection	■	■		■		
<b>BMW TwinPower Turbo four-cylinder diesel engine</b> with a turbocharger with variable turbine geometry and common rail direct injection			■			
<b>BMW TwinPower Turbo six-cylinder in-line petrol engine</b> combining one twin-scroll turbocharger with Valvetronic, Double-VANOS and High Precision Injection					■	
<b>BMW TwinPower Turbo six-cylinder in-line petrol engine</b> , one twin-scroll turbocharger with Valvetronic, Double-VANOS and High Precision Injection in combination with 40kW electric engine, powered by lithium-ion battery						■
<b>Brake Energy Regeneration</b> , improves fuel efficiency and ensures that the full power of the engine is available for acceleration	■	■	■	■	■	■
<b>Brake-pad wear indicator</b>	■	■	■	■	■	■
<b>Condition Based Service</b> , inspections are scheduled to suit the way in which the car is driven	■	■	■	■	■	■
<b>Diesel particle filter</b> (maintenance-free)			■			
<b>Driving Experience Control</b> , enables adjustment of drivetrain settings (ECO PRO, Comfort, Sport and Sport+) <b>Note:</b> Sport+ mode not standard for 316i	■	■	■	■	■	■
<b>ECO PRO Mode</b> , optimises fuel consumption and shows the potential fuel economy in the instrument cluster	■	■	■	■	■	■
<b>Electronic differential lock</b> , active in DSC Off mode	■	■	■	■	■	■
<b>Electric Power Steering with Servotronic</b>	■	■	■	■	■	■
<b>Start/Stop button</b> , incl. keyless engine start	■	■	■	■	■	■
<b>Safety</b>						
<b>Active Protection</b> , safety package for initiating protective measures for the occupants if an accident situation is imminent: belt tensioning, windows are closed, sliding sunroof is closed (if fitted). Incl. Attentiveness Assistant	■	■	■	■	■	■
<b>Airbags:</b> driver and front passenger airbags, head airbags in the front and rear, side airbags for driver and front passenger	■	■	■	■	■	■
<b>Brakes:</b> disc brakes at the front and rear, inner-vented	■	■	■	■	■	■
<b>Central locking</b> with electronic immobiliser, crash sensor; fuel tank filler cap integrated into central locking system	■	■	■	■	■	■
<b>Dynamic braking lights</b> , flashing brake lights and hazard indicator under extreme braking	■	■	■	■	■	■
<b>Dynamic Stability Control (DSC)</b> incl. Antilock Braking System (ABS), Brake Assistant, Cornering Brake Control (CBC) and Dynamic Traction Control (DTC)	■	■	■	■	■	■
<b>Safety body shell:</b> deformation zones at the front and rear, easily-replaceable deformation elements that absorb impacts at speeds up to 15 km/h; integrated side impact protection in doors	■	■	■	■	■	■
<b>Seat belts:</b> three-point seat belts for all rear seats; three-point inertia-reel seat belts in the front with belt tensioners and belt force limiters	■	■	■	■	■	■
<b>Warning triangle and first aid kit</b>	■	■	■	■	■	■

## ■ Standard

While BMW Group Australia has endeavoured to ensure that all information, representations, illustrations and specifications contained in these materials are accurate at the time of publication (6 May 2015), the information is general in nature only. Product features, specifications, models and prices are subject to change without notice. The general information in these materials should always be read in conjunction with information from authorised BMW dealers. To the extent permitted by law, BMW Group Australia excludes all express and implied warranties or guarantees and all liability, whether direct, indirect, special or consequential, arising from negligence or otherwise relating to the use of these materials, any inaccuracies and for any non-compliance by any vehicle with any representation, illustration, specification, description, product feature, colour, or other information contained in these materials.

# STANDARD EQUIPMENT.

	316i	320i	320d	328i	335i	ActiveHybrid 3
<b>Wheels and tyres</b>						
<b>17" BMW light-alloy wheels</b> (styling dependent on selected BMW Line) 7.5 J x 17" with 225/50 R17	■					
<b>18" BMW light-alloy wheels</b> (styling dependent on selected BMW Line) 8 J x 18" with 225/45 R18		■	■			
<b>19" BMW light-alloy wheels</b> (styling dependent on selected BMW Line/Package), front 8 J x 19" with 225/40 R19, rear 8.5 J x 19" with 255/35 R19 run-flat safety tyres				■	■	■
<b>Locking wheel bolts</b>	■	■	■	■	■	■
<b>Run-flat safety tyres</b> incl. run-flat indicator	■	■	■	■	■	■

<b>Exterior design</b>						
<b>Exhaust pipe</b> , 70mm, single, round, left, (styling dependent on selected BMW Line)	■	■	■			
<b>Exhaust pipe</b> , 65mm, dual, round, left (styling dependent on selected BMW Line)				■		
<b>Exhaust pipes</b> , 80mm, single, round, left and right (styling dependent on selected BMW Line)					■	■
<b>Exterior mirror housing with integrated additional turn indicator</b> , mirror caps in body colour	■	■	■	■	■	■
<b>Ornamental front grille</b> (styling dependent on selected BMW Line)	■	■	■	■	■	■
<b>Window recess cover</b> (styling dependent on selected BMW Line)	■	■	■	■	■	■

<b>ConnectedDrive</b>						
<b>Intelligent Emergency Call</b> , BMW ConnectedDrive automated transmission of vehicle accident information and telephone call for assistance to the BMW ConnectedDrive Call Centre. Emergency services are informed by the BMW ConnectedDrive Call Centre on behalf of the customer and deployed if required. Manual emergency call can also be initiated via SOS button	■	■	■	■	■	■
<b>TeleServices</b> , BMW ConnectedDrive automated transmission of service-related vehicle data to your preferred service dealer. Includes TeleServices Battery Guard and BMW Breakdown calls to Roadside Assistance	■	■	■	■	■	■

<b>Driver assistance</b>						
<b>Cruise Control with braking function</b>	■	■	■	■	■	■
<b>Driving Assistant</b> , incl. Approach Control Warning, Lane Departure Warning, pedestrian warning/approach control warning with light city braking function	■	■	■	■	■	■
<b>Head-Up Display</b> , important driving information is projected onto the windscreen in the driver's field of vision	■	■	■	■	■	■
<b>Lane Change Warning System</b> , detects and alerts driver to vehicles in driver's blind spot when the indicator is activated, with a discreet vibration of the steering wheel and visual warning on the exterior mirror	■	■	■	■	■	■
<b>Park Distance Control (PDC)</b> , front and rear	■	■	■	■	■	■
<b>Rear View Camera</b>	■	■	■	■	■	■
<b>Speed limit device</b> , enables setting of desired maximum speed; indicator in the control display and in the instrument cluster. Can be overridden when necessary	■	■	■	■	■	■
<b>Surround View</b> incl. Top View and Side View. Top View provides a bird's-eye perspective of the vehicle; Side View provides visibility in situations where vision is obscured, through cameras located each side of the front bumper	■	■	■	■	■	■

## ■ Standard

While BMW Group Australia has endeavoured to ensure that all information, representations, illustrations and specifications contained in these materials are accurate at the time of publication (6 May 2015), the information is general in nature only. Product features, specifications, models and prices are subject to change without notice. The general information in these materials should always be read in conjunction with information from authorised BMW dealers. To the extent permitted by law, BMW Group Australia excludes all express and implied warranties or guarantees and all liability, whether direct, indirect, special or consequential, arising from negligence or otherwise relating to the use of these materials, any inaccuracies and for any non-compliance by any vehicle with any representation, illustration, specification, description, product feature, colour, or other information contained in these materials.

# STANDARD EQUIPMENT.

	316i	320i	320d	328i	335i	ActiveHybrid 3
<b>Light and sight</b>						
<b>Bi-Xenon headlights incl. headlight washer system</b> , with automatic headlight range controls, and accent lights with LED technology. The front LED light rings are flattened at the top and bottom and feature a daytime running light function	■	■	■	■	■	■
<b>Fog lights</b> , incl. heated exterior mirrors and windscreen washer jets	■	■	■	■	■	■
<b>Glove box opener with Chrome highlights</b>	■	■	■	■	■	■
<b>Heat/sun protection glass</b>	■	■	■	■	■	■
<b>Interior and exterior mirrors with automatic anti-dazzle function</b> , aspheric exterior mirror on passenger side, with automatic parking function and electric fold-in function	■	■	■	■	■	■
<b>Interior lights</b> , front and rear interior lights, vanity mirror lighting for driver and front passenger, luggage compartment light	■					
<b>Lights package</b> , incl. LED rear interior light and reading lights, LED front reading lights, LED vanity mirror lighting for driver and front passenger, ambience lighting, ambience light for door upholstery inserts, centre stack storage compartment and centre console storage compartment, footwell lights with ambience light at front, handle-area lighting in the door handles, exit lights in the doors and LED luggage compartment light		■	■	■	■	■
<b>Rain sensor</b> , incl. automatic headlight activation	■	■	■	■	■	■
<b>Rear lights with LED technology</b>	■	■	■	■	■	■
<b>Interior design</b>						
<b>Door sill finishers</b> , Black high-gloss, front with BMW Line designation	■	■	■	■	■	
<b>Door sill finishers</b> , Black high-gloss, with ActiveHybrid 3 designation						■
<b>Interior trim</b> (styling dependent on selected BMW Line)	■	■	■	■	■	■
<b>Upholstery</b> , Sensatec man-made leather	■	■	■			
<b>Upholstery</b> , Dakota leather				■	■	■
<b>Comfort and interior equipment</b>						
<b>Automatic air conditioning</b> , 2-zone with extended contents. Fully automatic temperature stratification and air volume control, separate temperature control for driver's and passenger sides, variable-temperature rear interior ventilation by nozzles in centre console, including solar sensor and fogging sensor, Max-Cool button, automatic air recirculation control and active carbon microfilter	■	■	■	■	■	■
<b>Comfort Access System</b> , keyless access to the vehicle incl. automatic tailgate operation				■	■	■
<b>Cupholders</b> , front	■	■	■	■	■	■
<b>Floor mats in Velour</b>	■	■	■	■	■	■
<b>Front armrest</b> , sliding adjustment and integrated storage compartment	■	■	■	■	■	■
<b>Manual seat adjustment</b> , height, seat fore-and-aft position, backrest rake and headrest height	■					
<b>Electric seat adjustment with memory function</b>		■	■	■	■	■
<b>Lumbar support</b> , electric, for driver and front passenger				■	■	■
<b>Personal Profile</b> , personalisation of important controls	■	■	■	■	■	■
<b>Rear seat backrest</b> , foldable, 40:20:40 split	■	■	■	■	■	■
<b>Roller sunblind for rear window</b> , electrical					■	■
<b>Roller sunblind for rear side windows</b> , mechanical					■	■
<b>Steering wheel, Sport leather</b> with multifunction buttons and gearshift paddles <small>Gearshift paddles not available on 316i</small>	■	■	■	■	■	■

## ■ Standard

While BMW Group Australia has endeavoured to ensure that all information, representations, illustrations and specifications contained in these materials are accurate at the time of publication (6 May 2015), the information is general in nature only. Product features, specifications, models and prices are subject to change without notice. The general information in these materials should always be read in conjunction with information from authorised BMW dealers. To the extent permitted by law, BMW Group Australia excludes all express and implied warranties or guarantees and all liability, whether direct, indirect, special or consequential, arising from negligence or otherwise relating to the use of these materials, any inaccuracies and for any non-compliance by any vehicle with any representation, illustration, specification, description, product feature, colour, or other information contained in these materials.

# STANDARD EQUIPMENT.

	316i	320i	320d	328i	335i	ActiveHybrid 3
<b>Comfort and interior equipment (cont.)</b>						
<b>Storage compartments</b> in front doors with bottle holders	■	■	■	■	■	■
<b>Storage package</b> incl. fold-down compartment in the instrument panel, segmented cupholders with chrome rings, nets on the backs of the front seats, rear door pockets, two additional 12V sockets, storage net on the right side of the luggage compartment, fastening strap on the right side of the luggage compartment, net on the floor of the luggage compartment and two fastening points	■	■	■	■	■	■
<b>Entertainment, communication and information</b>						
<b>AUX-IN connection</b> , incl. 12V socket in the centre console	■	■	■	■	■	■
<b>Bluetooth</b> , enables wireless connection of a compatible Bluetooth mobile phone to the vehicle, including audio streaming Check the compatibility of your mobile phone at <a href="http://bmw.com/Bluetooth">bmw.com/Bluetooth</a>	■	■	■	■		
<b>Convenience telephony with extended Smartphone connectivity</b> Provision for snap-in adapter (available separately through Genuine BMW Accessories) for charging function and connection to external aerial Includes extended Bluetooth functionality such as pairing of multiple devices and more, depending on the features of the Bluetooth/USB device Check the compatibility of your mobile phone at <a href="http://bmw.com/Bluetooth">bmw.com/Bluetooth</a>					■	■
<b>DAB+ digital radio tuner</b> , exceptional sound quality, improved reception and a wide range of special-interest channels				■	■	■
<b>Stereo Loudspeaker system</b> , 6 loudspeakers, 100W, 6 programmable memory buttons, MP3-compatible CD drive	■	■	■	■		
<b>harman/kardon Surround Sound System</b> , 16 high-end loudspeakers, 600W digital amplifier with individually adjustable equaliser, 9 channels and chrome applications, 6 programmable memory buttons and MP3-compatible CD drive					■	■
<b>Instrument cluster with extended contents</b> , incl. high-resolution display for vehicle information including check control messages, navigation guidance directions, additional ECO PRO data and extended lists e.g. phonebook or radio stations	■	■	■	■	■	■
<b>Navigation system Business</b> , incl. iDrive Controller with added functionality, high-resolution built-in 6.5" display for showing maps or a combination of maps with directional arrows, an integrated hard disc for navigation data and electronic owner's handbook	■	■	■			
<b>Navigation system Professional</b> , incl. iDrive Touch Controller with added functionality, high-resolution built-in 8.8" colour display, DVD drive, 3D map and arrow display, as well as bird's-eye view, integrated hard disc for navigation including 20GB storage for audio files and electronic owner's handbook				■	■	■
<b>On-board computer</b> , incl. Check Control, and consumption, range, speed and outside temperature on Info Display	■	■	■	■	■	■
<b>USB audio interface</b> , enables connection of an MP3 player, Apple iPod or USB memory stick via the USB interface	■	■	■	■	■	■

## ■ Standard

While BMW Group Australia has endeavoured to ensure that all information, representations, illustrations and specifications contained in these materials are accurate at the time of publication (6 May 2015), the information is general in nature only. Product features, specifications, models and prices are subject to change without notice. The general information in these materials should always be read in conjunction with information from authorised BMW dealers. To the extent permitted by law, BMW Group Australia excludes all express and implied warranties or guarantees and all liability, whether direct, indirect, special or consequential, arising from negligence or otherwise relating to the use of these materials, any inaccuracies and for any non-compliance by any vehicle with any representation, illustration, specification, description, product feature, colour, or other information contained in these materials.

# SPORT LINE.

		316i	320i	320d	328i
7AC	<b>Sport Line</b>	NCO	NCO	NCO	NCO
<b>Sport Line content</b>					
	<b>17" BMW light-alloy wheels Double-spoke styling 392</b> , 7.5 J x 17" with 225/50 R17 run-flat safety tyres	■			
	<b>18" BMW light-alloy wheels Double-spoke styling 397</b> , 8 J x 18" with 225/45 R18 run-flat safety tyres		■	■	
	<b>19" BMW light-alloy wheels Double-spoke styling 401</b> , front 8 J x 19" with 225/40 R19, rear 8.5 J x 19" with 255/35 R19 run-flat safety tyres				■
	<b>Ambience light</b> , front, rear, front footwell and storage compartment centre console, switchable between Light Orange and LED White, and welcome light switchable between White or Cold White	■	■	■	■
	<b>Chrome Pearl Grey surrounds on the air conditioning and radio controls</b>	■	■	■	■
	<b>Door sill finishers in aluminium with "BMW Sport" designation</b>	■	■	■	■
	<b>Driving experience control with additional Sport+ mode</b> (already standard on all except 316i)	■	■	■	■
	<b>Exclusive High-Gloss Black trims</b> , front (e.g. Kidney grille), rear bumper finisher and B pillar. Tailpipe finisher in Black Chrome	■	■	■	■
	<b>Interior trim</b> , Black High-Gloss with Coral Red highlights (4AT + 4DK)	■	■	■	■
	<b>Red detailing on the car key</b>	■	■	■	■
	<b>Speedometer and rev counter with Red chronoscales</b>	■	■	■	■
	<b>"Sport" designation left/right on front side panel</b>	■	■	■	■
	<b>Sport leather steering wheel</b> with Red contrast stitching	■	■	■	■
	<b>Sport Seats for driver and front passenger</b>	■	■	■	■
	<b>Upholstery</b> , Sensatec Black (KCSW), Veneto Beige (KCDF) or Black with Red highlight (KCL3)	■	■	■	
	<b>Upholstery</b> , Dakota leather (see below for colour availability)				■
<b>Options exclusive to Sport Line</b>					
2A5	<b>BMW light-alloy wheels Double-spoke styling 397</b> , 8 J x 18" with 225/45 R18 run-flat safety tyres	□	■	■	NCO
2XE	<b>Sport leather steering wheel, Black</b> , deletes Red contrast stitching	NCO	NCO	NCO	NCO
4AB + 4DM	<b>Interior trim</b> , Fine-wood Burlled Walnut with Pearl Gloss Chrome highlights	□	□	□	□
4AD + 4DL	<b>Interior trim</b> , Fine Brushed Aluminium with high-gloss Black highlights	□	□	□	NCO
4AD + 4DM	<b>Interior trim</b> , Fine Brushed Aluminium with Pearl Gloss Chrome highlights	□	□	□	NCO
4AD + 4DN	<b>Interior trim</b> , Fine Brushed Aluminium with Coral Red highlights	□	□	□	NCO
4CE + 4DM	<b>Interior trim</b> , Fine-wood Finesline Anthracite with Pearl Gloss chrome highlights	□	□	□	□
3BE	<b>High-Gloss Black exterior mirror caps</b>	NCO	NCO	NCO	NCO
3DZ	<b>Deletion of "Sport" designation</b>	NCO	NCO	NCO	NCO
760	<b>BMW Individual High-Gloss Shadow Line</b>	□	□	□	□
704	<b>M Sport Suspension</b> , stiffer suspension spring and damper setup with vehicle lowered by 10mm	□			
LC	<b>Upholstery</b> , Dakota leather Black (LCSW), Black with Red highlight (LCL3), Oyster with Black interior world (LCOM), Coral Red with Black highlight (LCL5), Veneto Beige (LCDF), Veneto Beige with exclusive stitching (LCLY) or Black with exclusive stitching (LCLZ) <b>Note:</b> when Dakota leather Oyster (LCOM) is selected, Black steering wheel without Red stitching (2XE) must be specified	□	□	□	■

■ Standard □ Optional NCO No Cost Option

While BMW Group Australia has endeavoured to ensure that all information, representations, illustrations and specifications contained in these materials are accurate at the time of publication (6 May 2015), the information is general in nature only. Product features, specifications, models and prices are subject to change without notice. The general information in these materials should always be read in conjunction with information from authorised BMW dealers. To the extent permitted by law, BMW Group Australia excludes all express and implied warranties or guarantees and all liability, whether direct, indirect, special or consequential, arising from negligence or otherwise relating to the use of these materials, any inaccuracies and for any non-compliance by any vehicle with any representation, illustration, specification, description, product feature, colour, or other information contained in these materials.

© BMW Australia Ltd (ABN 11 004 675 129) ("BMW Group Australia") and BMW AG, Munich/Germany. All rights reserved.

# LUXURY LINE.

		316i	320i	320d	328i	335i	ActiveHybrid 3
7S2	Luxury Line	NCO	NCO	NCO	NCO	NCO	NCO

Luxury Line content							
17" BMW light-alloy wheels Multi-spoke styling 414, 7.5 J x 17" with 225/50 R17 run-flat safety tyres	■						
18" BMW light-alloy wheels Multi-spoke styling 416, 8 J x 18" with 225/45 R18 run-flat safety tyres		■	■				
19" BMW light-alloy wheels Double-spoke styling 401, front 8 J x 19" with 225/40 R19, rear 8.5 J x 19" with 255/35 R19 run-flat safety tyres					■	■	■
Ambience light, front, rear, front footwell, B-pillar and storage compartment centre console switchable between BMW Classic Light Orange and LED Cold White, and welcome light switchable between White and Cold White	■	■	■	■	■	■	■
B pillar in high-gloss Black	■	■	■	■	■	■	■
Chrome detailing on the car key	■	■	■	■	■	■	■
Chrome Pearl Grey surrounds on the air conditioning and radio controls	■	■	■	■	■	■	■
Door sill finishers with inserts in aluminium with "BMW Luxury" designation	■	■	■	■	■	■	■
Exclusive Chrome trims on the front (e.g. Kidney grille) and rear incl. exhaust tailpipe	■	■	■	■	■	■	■
Interior trim, Fine-wood Fineline Anthracite with Pearl Dark Gloss chrome highlights (4CE+4DM)	■	■	■	■			
Interior trim, Fine-wood Burlled Walnut with inlays, with Pearl Gloss chrome highlights (4B8+4DM)					■	■	
"Luxury" designation left/right on front side panel	■	■	■	■	■	■	
Upholstery, Sensatec Black (KCSW) or Veneto Beige (KCDF)	■	■	■				
Upholstery, Dakota leather (see below for colour availability)				■	■	■	
Window recess finishers in Chrome	■	■	■	■	■	■	■

Options exclusive to Luxury Line							
2H2	18" BMW light-alloy wheels Multi-spoke styling 416, 8 J x 18" with 225/45 R18 run-flat safety tyres	□	■	■	NCO		
3DZ	Deletion of "Luxury" designation	NCO	NCO	NCO	NCO	NCO	NCO
4AB + 4DM	Interior trim, Fine-wood Burlled Walnut with Pearl Gloss Chrome highlights	NCO	NCO	NCO	NCO	NCO	NCO
4AD + 4DL	Interior trim, Fine-Brushed Aluminium with Black High-Gloss highlights	NCO	NCO	NCO	NCO	NCO	NCO
4AD + 4DM	Interior trim, Fine-Brushed Aluminium with Pearl Gloss Chrome highlights	NCO	NCO	NCO	NCO	NCO	NCO
4B8 + 4DM	Interior trim, Fine-wood Burlled Walnut with inlays, with Pearl Gloss chrome highlights	□	□	□	□	NCO	NCO
4CE + 4DM	Interior trim, Fine-wood trim 'Fineline' anthracite with Pearl Gloss Chrome highlights	NCO	NCO	NCO	NCO	NCO	NCO
LC	Upholstery, Dakota leather, available in Black (LCSW), Oyster with Black instrument panel (LCOM), Veneto Beige (LCDF), or Dakota leather with exclusive stitching in Saddle brown (LCLX), Veneto Beige (LCLY) or Black (LCLZ)	□	□	□	■	■	■

■ Standard □ Optional NCO No Cost Option

While BMW Group Australia has endeavoured to ensure that all information, representations, illustrations and specifications contained in these materials are accurate at the time of publication (6 May 2015), the information is general in nature only. Product features, specifications, models and prices are subject to change without notice. The general information in these materials should always be read in conjunction with information from authorised BMW dealers. To the extent permitted by law, BMW Group Australia excludes all express and implied warranties or guarantees and all liability, whether direct, indirect, special or consequential, arising from negligence or otherwise relating to the use of these materials, any inaccuracies and for any non-compliance by any vehicle with any representation, illustration, specification, description, product feature, colour, or other information contained in these materials.

© BMW Australia Ltd (ABN 11 004 675 129) ("BMW Group Australia") and BMW AG, Munich/Germany. All rights reserved.



# M SPORT PACKAGE.

	316i	320i	320d	328i	335i	ActiveHybrid 3
337 <b>M Sport Package</b>	□	□	□	□	NCO	NCO

<b>M Sport Package content</b>						
<b>19" BMW M light-alloy wheels, Star-spoke 403M</b> , front 8 J x 19" with 225/40 R19, rear 8.5 J x 19" with 255/35 R19 run-flat safety tyres. Snow chains cannot be fitted	■	■	■	■	■	■
<b>Ambience light switchable between Classic Orange and LED Cold White</b>	■	■	■	■	■	■
<b>BMW Individual High-Gloss Shadow Line</b>	■	■	■	■	■	■
<b>BMW Individual roofliner Anthracite</b>	■	■	■	■	■	■
<b>Blue detailing on the car key</b>	■	■	■	■	■	■
<b>Exhaust tailpipes in High-Gloss Chrome</b>	■	■	■	■	■	■
<b>Interior trim Aluminium Hexagon with Estoril Blue matt highlights</b>	■	■	■	■	■	■
<b>Instrument cluster with specific gauge-dial printing and chronoscale</b>	■	■	■	■	■	■
<b>Kidney grille, 8 bars in high-gloss Black</b>	■	■	■	■	■	■
<b>M Aerodynamics package</b>	■	■	■	■	■	■
<b>M door sill finishers</b>	■	■	■	■	■	■
<b>M leather steering wheel</b>	■	■	■	■	■	■
<b>M Sport Suspension</b> , stiffer suspension spring and damper setup with vehicle lowered by 10mm <b>Note:</b> Adaptive M Suspension standard for all variants except 316i	■					
<b>Sport Seats for driver and front passenger</b>	■	■	■	■	■	■
<b>Upholstery</b> , Dakota leather, available in Black (LCSW), Veneto Beige (LCDF) or Coral Red with Black highlight (LCL5), Oyster with Black interior world (LCOM)	■	■	■	■	■	■

<b>M Sport Package options</b>						
21C <b>19" BMW M light-alloy wheels, Double-spoke 442M, Orbit Grey</b> , front 8 J x 19" with 225/40 R19, rear 8.5 J x 19" with 255/35 R19 run-flat safety tyres	□	□	□	□	□	□
2NH <b>M Sport Brakes</b> , 4 piston aluminium fixed-calliper and 2 piston rear calliper painted Blue with M badge Only available with M Sport Package	□	□	□	□	□	□
2VF <b>Adaptive M Suspension</b>	□	■	■	■	■	■
B45 <b>Estoril Blue metallic paintwork</b> Only available with M Sport Package	□	□	□	□	□	□
4AB + 4DM <b>Interior trim</b> , Fine-wood Burlled Walnut with Pearl Gloss Chrome highlights	□	□	□	□	□	□
4AD + 4DL <b>Interior trim</b> , Fine-Brushed Aluminium with Black High-Gloss highlights	NCO	NCO	NCO	NCO	NCO	NCO
4CE + 4DM <b>Interior trim</b> , Fine-wood trim 'Fineline' anthracite with Pearl Gloss Chrome highlights	□	□	□	□	□	□
4MR + 4DL <b>Interior trim</b> , Aluminium Hexagon with Black High-Gloss highlights	NCO	NCO	NCO	NCO	NCO	NCO

■ Standard □ Optional NCO No Cost Option

While BMW Group Australia has endeavoured to ensure that all information, representations, illustrations and specifications contained in these materials are accurate at the time of publication (6 May 2015), the information is general in nature only. Product features, specifications, models and prices are subject to change without notice. The general information in these materials should always be read in conjunction with information from authorised BMW dealers. To the extent permitted by law, BMW Group Australia excludes all express and implied warranties or guarantees and all liability, whether direct, indirect, special or consequential, arising from negligence or otherwise relating to the use of these materials, any inaccuracies and for any non-compliance by any vehicle with any representation, illustration, specification, description, product feature, colour, or other information contained in these materials.

# OPTIONAL EQUIPMENT.

		316i	320i	320d	328i	335i	ActiveHybrid 3
<b>Wheels and tyres</b>							
2DX	<b>BMW light-alloy wheels Star-spoke styling 394</b> , 7.5 J x 17" with 225/50 R17 run-flat safety tyres	NCO					
2DW	<b>BMW light-alloy wheels Star-spoke styling 393</b> , 7.5 J x 17" with 225/50 R17 run-flat safety tyres	□					
2FL	<b>BMW light-alloy wheels V-spoke styling 395</b> , front 7 J x 17" with 225/50 R17, rear 8.5 J x 17" with 255/45 R17 run-flat safety tyres. Snow chains cannot be fitted	□					
2DY	<b>BMW light-alloy wheels Star-spoke styling 396</b> , 8 J x 18" with 225/45 R17 run-flat safety tyres	□	NCO	NCO			
2FM	<b>BMW light-alloy wheels V-spoke styling 398</b> , front 8 J x 18" with 225/45 R18, rear 8.5 J x 18" with 255/40 R18 run-flat safety tyres	□	□	□			
2A4	<b>BMW light-alloy wheels Double-spoke styling 401</b> , front 8 J x 19" with 225/40 R19, rear 8.5 J x 19" with 255/35 R19 run-flat safety tyres	□	□	□	■	■	■

<b>Options</b>							
248	<b>Steering wheel heating</b>	□	□	□	□	□	□
2VB	<b>Tyre pressure monitor</b> , electric monitoring system, displays each tyre pressure and warns of loss of 20% or more	□	□	□	□	□	□
2VF	<b>Adaptive M suspension</b> with ride height lowered 10mm and shock absorber comfort adjustable by Driving Experience Control, giving a more sporting suspension setup without any loss in ride comfort Not available with M Sport Suspension (704) See page 11 for pricing in conjunction with M Sport Package	□	■	■	■	■	■
2VL	<b>Variable Sport Steering</b>	□	□	□	□	□	□
302	<b>Alarm system</b> with remote control	□	□	□	□	□	□
320	<b>Model designation deletion</b> For ActiveHybrid 3, only deletes boot lid badge	NCO	NCO	NCO	NCO	NCO	NCO
322	<b>Comfort Access System</b> , keyless access to the vehicle incl. exterior handle area lighting and automatic tailgate operation	□	□	□	■	■	■
403	<b>Glass sunroof</b> , with electric slide and lift control, comfort opening function via car key	□	□	□	□	□	□
415	<b>Roller sunblind for rear window</b>	□	□	□	□	■	■
417	<b>Roller sunblind for rear side windows</b> , mechanical	□	□	□	□	■	■
420	<b>Sun protection glazing</b> , darker tinted glass for rear and rear side windows	□	□	□	□	□	□
441	<b>Smoker's package</b>	□	□	□	□	□	□
459	<b>Electric seat adjustment with memory function</b>	□	■	■	■	■	■
481	<b>Sport Seats for driver and front passenger</b> Included in Sport Line (7AC) and M Sport Package (337)	□	□	□	□	□	□
488	<b>Lumbar support, electric</b> , for driver and front passenger	□	□	□	■	■	■
494	<b>Seat heating for driver and front passenger</b>	□	□	□	□	□	□
496	<b>Seat heating for rear seats</b> Only available with Seat heating for driver and front passenger (494) and Dakota leather upholstery (LC**)	□	□	□	□	□	□

■ Standard □ Optional NCO No Cost Option

While BMW Group Australia has endeavoured to ensure that all information, representations, illustrations and specifications contained in these materials are accurate at the time of publication (6 May 2015), the information is general in nature only. Product features, specifications, models and prices are subject to change without notice. The general information in these materials should always be read in conjunction with information from authorised BMW dealers. To the extent permitted by law, BMW Group Australia excludes all express and implied warranties or guarantees and all liability, whether direct, indirect, special or consequential, arising from negligence or otherwise relating to the use of these materials, any inaccuracies and for any non-compliance by any vehicle with any representation, illustration, specification, description, product feature, colour, or other information contained in these materials.

# OPTIONAL EQUIPMENT.

		316i	320i	320d	328i	335i	ActiveHybrid 3
<b>Options</b>							
5AC	<b>High-Beam Assist</b> , switches automatically between high and low beam Alternative pricing in combination with Adaptive headlights (524)	<input type="checkbox"/>	<input type="checkbox"/>	<input type="checkbox"/>	<input type="checkbox"/>	<input type="checkbox"/>	<input type="checkbox"/>
		NCO	NCO	NCO	NCO	NCO	NCO
5DF	<b>Active Cruise Control</b> with Stop&Go function, incl. collision warning, cruise control and distance control operated by radar sensors		<input type="checkbox"/>	<input type="checkbox"/>	<input type="checkbox"/>	<input type="checkbox"/>	<input type="checkbox"/>
5DP	<b>Parking Assistant</b> , uses ultrasonic sensors to search for and identify parallel parking spaces, then steers the vehicle into the space whilst the driver operates the accelerator and brake	<input type="checkbox"/>	<input type="checkbox"/>	<input type="checkbox"/>	<input type="checkbox"/>	<input type="checkbox"/>	<input type="checkbox"/>
524	<b>Adaptive headlights</b> , with variable light distribution, incl. cornering lights. Illuminates bends as the driver turns the steering wheel Only available with High-Beam Assist (5AC)	<input type="checkbox"/>	<input type="checkbox"/>	<input type="checkbox"/>	<input type="checkbox"/>	<input type="checkbox"/>	<input type="checkbox"/>
6AM	<b>Real Time Traffic Information</b> , BMW ConnectedDrive display of current traffic information in the navigation map with expected travel time delays to your destination. Includes suggestions on alternative routes. 3 year subscription Only in conjunction with ConnectedDrive Lifestyle (Z1L) Included in ConnectedDrive Freedom (7S9)	<input type="checkbox"/>	<input type="checkbox"/>	<input type="checkbox"/>	<input type="checkbox"/>	<input type="checkbox"/>	<input type="checkbox"/>
6AR	<b>Internet</b> , BMW ConnectedDrive independent, in-vehicle internet access via the pre-fitted vehicle SIM card. When stationary, websites can be called up on the Control Display by entering the URL using the iDrive Touch Controller. 1 year subscription Only in conjunction with either ConnectedDrive Lifestyle (Z1L) or ConnectedDrive Freedom (7S9)	<input type="checkbox"/>	<input type="checkbox"/>	<input type="checkbox"/>	<input type="checkbox"/>	<input type="checkbox"/>	<input type="checkbox"/>
6NS	<b>Convenience telephony with extended Smartphone connectivity</b> Provision for snap-in adapter (available separately through Genuine BMW Accessories) for charging function and connection to external aerial Includes extended Bluetooth functionality such as pairing of multiple devices and more, depending on the features of the Bluetooth/USB device Check the compatibility of your mobile phone at <a href="http://bmw.com/Bluetooth">bmw.com/Bluetooth</a>	<input type="checkbox"/>	<input type="checkbox"/>	<input type="checkbox"/>	<input type="checkbox"/>	<input checked="" type="checkbox"/>	<input checked="" type="checkbox"/>
601	<b>TV function</b> , digital reception (DVB-T) Only available with Navigation System Professional (609)	<input type="checkbox"/>	<input type="checkbox"/>	<input type="checkbox"/>	<input type="checkbox"/>	<input type="checkbox"/>	<input type="checkbox"/>
609	<b>Navigation system Professional</b> , incl. iDrive Touch Controller with added functionality, high-resolution built-in 8.8" colour display, quick-start function, DVD drive, 3D map and arrow display, as well as bird's-eye view, integrated hard disc for navigation including 20GB storage for audio files	<input type="checkbox"/>	<input type="checkbox"/>	<input type="checkbox"/>	<input checked="" type="checkbox"/>	<input checked="" type="checkbox"/>	<input checked="" type="checkbox"/>
654	<b>DAB+ digital radio tuner</b> , exceptional sound quality, improved reception and a wide range of special-interest channels For information on coverage please visit <a href="http://digitalradioplus.com.au">digitalradioplus.com.au</a>	<input type="checkbox"/>	<input type="checkbox"/>	<input type="checkbox"/>	<input checked="" type="checkbox"/>	<input checked="" type="checkbox"/>	<input checked="" type="checkbox"/>
676	<b>HiFi Loudspeaker system</b> , 9 loudspeakers, 205W analogue amplifier	<input type="checkbox"/>	<input type="checkbox"/>	<input type="checkbox"/>	<input type="checkbox"/>		
688	<b>harman/kardon Surround Sound system</b> , 16 high-end loudspeakers, 600W digital amplifier with individually adjustable equaliser, 9 channels and chrome applications	<input type="checkbox"/>	<input type="checkbox"/>	<input type="checkbox"/>	<input type="checkbox"/>	<input checked="" type="checkbox"/>	<input checked="" type="checkbox"/>

■ Standard   □ Optional   NCO No Cost Option

While BMW Group Australia has endeavoured to ensure that all information, representations, illustrations and specifications contained in these materials are accurate at the time of publication (6 May 2015), the information is general in nature only. Product features, specifications, models and prices are subject to change without notice. The general information in these materials should always be read in conjunction with information from authorised BMW dealers. To the extent permitted by law, BMW Group Australia excludes all express and implied warranties or guarantees and all liability, whether direct, indirect, special or consequential, arising from negligence or otherwise relating to the use of these materials, any inaccuracies and for any non-compliance by any vehicle with any representation, illustration, specification, description, product feature, colour, or other information contained in these materials.

© BMW Australia Ltd (ABN 11 004 675 129) ("BMW Group Australia") and BMW AG, Munich/Germany. All rights reserved.

# OPTIONAL EQUIPMENT.

		316i	320i	320d	328i	335i	ActiveHybrid 3
<b>Options (cont.)</b>							
Z1L	<p><b>ConnectedDrive Lifestyle</b></p> <ul style="list-style-type: none"> <li>- <b>ConnectedDrive Services:</b> internet-based services including BMW Online (News, Weather, Google local search, Office, Apps), and the BMW Connected App. 3 year subscription</li> <li>- <b>Remote Services:</b> remote door lock/unlock, ventilation control, headlight flash, Google local search with send-to-car function and vehicle finder up to 1.5km radius</li> </ul> <p>Not in conjunction with ConnectedDrive Freedom (7S9)</p>	<input type="checkbox"/>	<input type="checkbox"/>	<input type="checkbox"/>	<input type="checkbox"/>	<input type="checkbox"/>	<input type="checkbox"/>
7S9	<p><b>ConnectedDrive Freedom</b></p> <ul style="list-style-type: none"> <li>- <b>ConnectedDrive Services:</b> internet-based services including BMW Online (News, Weather, Google local search, Office, Apps), and the BMW Connected App. 3 year subscription</li> <li>- <b>Remote Services:</b> remote door lock/unlock, ventilation control, headlight flash, Google local search with send-to-car function and vehicle finder up to 1.5km radius</li> <li>- <b>Real Time Traffic Information:</b> display of current traffic information in the navigation map with expected travel time delays to your destination. Includes suggestions on alternative routes. 3 year subscription</li> <li>- <b>Concierge Services:</b> 24/7 assistance via ConnectedDrive call centre at the touch of a button, for assistance with searching for destinations, POIs, and sends these addresses straight to your vehicle. 3 year subscription</li> </ul> <p>Not in conjunction with ConnectedDrive Lifestyle (Z1L)</p>	<input type="checkbox"/>	<input type="checkbox"/>	<input type="checkbox"/>	<input type="checkbox"/>	<input type="checkbox"/>	<input type="checkbox"/>
Z9A	<b>6-speed manual transmission</b>	NCO	NCO	NCO	NCO	NCO	
	<b>Metallic paintwork</b>	<input type="checkbox"/>	<input type="checkbox"/>	<input type="checkbox"/>	<input type="checkbox"/>	<input type="checkbox"/>	<input type="checkbox"/>

■ Standard   □ Optional   NCO No Cost Option

While BMW Group Australia has endeavoured to ensure that all information, representations, illustrations and specifications contained in these materials are accurate at the time of publication (6 May 2015), the information is general in nature only. Product features, specifications, models and prices are subject to change without notice. The general information in these materials should always be read in conjunction with information from authorised BMW dealers. To the extent permitted by law, BMW Group Australia excludes all express and implied warranties or guarantees and all liability, whether direct, indirect, special or consequential, arising from negligence or otherwise relating to the use of these materials, any inaccuracies and for any non-compliance by any vehicle with any representation, illustration, specification, description, product feature, colour, or other information contained in these materials.

# BMW INDIVIDUAL.



True exclusivity is defined by the very highest standards: those that each person sets for themselves. BMW Individual enables you to realise these standards in the car you drive. Let yourself be inspired by the BMW Individual range in which all individual details complement each other perfectly.

		320i	320d	328i	335i	ActiveHybrid 3
<b>BMW Individual Wheels</b>						
2PR	<b>BMW Individual light alloy wheels V-Spoke style 439</b> , front 8 J x 19" with 225/40, rear 8.5 J x 19" with 225/35 run-flat safety tyres Not available with M Sport Package (337)	<input type="checkbox"/>	<input type="checkbox"/>	<input type="checkbox"/>	<input type="checkbox"/>	<input type="checkbox"/>
2T0	<b>BMW Individual light alloy wheels V-spoke style 626I</b> , front 8 J x 19" with 225/40, rear 8.5 J x 19" with 225/35 run-flat safety tyres Not available with M Sport Package (337)	<input type="checkbox"/>	<input type="checkbox"/>	<input type="checkbox"/>	<input type="checkbox"/>	<input type="checkbox"/>
<b>BMW Individual Paintwork</b>						
X02	<b>Citrin Black metallic</b>					
X04	<b>Moonstone metallic</b>	<input type="checkbox"/>	<input type="checkbox"/>	<input type="checkbox"/>	<input type="checkbox"/>	<input type="checkbox"/>
X10	<b>Tanzanite Blue metallic</b>					
X12	<b>Smoked Topaz metallic</b>					
490	<b>Brilliant White metallic</b>					<input type="checkbox"/>
<b>BMW Individual Interior Trim Finishers</b>						
XE5	<b>Fine-wood trim Sycamore, red brown, dark</b>	<input type="checkbox"/>	<input type="checkbox"/>	<input type="checkbox"/>	<input type="checkbox"/>	<input type="checkbox"/>
XE7	<b>Piano finish, Black</b>					
XEX	<b>Fine-wood trim Ash grain white</b> All must be ordered with trim finishers in pearl gloss chrome (4DM)					
	Alternative pricing with Luxury Line	<input type="checkbox"/>	<input type="checkbox"/>	<input type="checkbox"/>	<input type="checkbox"/>	<input type="checkbox"/>

■ Standard □ Optional NCO No Cost Option

While BMW Group Australia has endeavoured to ensure that all information, representations, illustrations and specifications contained in these materials are accurate at the time of publication (6 May 2015), the information is general in nature only. Product features, specifications, models and prices are subject to change without notice. The general information in these materials should always be read in conjunction with information from authorised BMW dealers. To the extent permitted by law, BMW Group Australia excludes all express and implied warranties or guarantees and all liability, whether direct, indirect, special or consequential, arising from negligence or otherwise relating to the use of these materials, any inaccuracies and for any non-compliance by any vehicle with any representation, illustration, specification, description, product feature, colour, or other information contained in these materials.

# BMW INDIVIDUAL.

320i	320d	328i	335i	ActiveHybrid 3
------	------	------	------	----------------

BMW Individual Extended Leather Trim 'Merino'					
ZAKS	Cashmere Beige   Black				
ZAP3	Criollo Brown   Black				
ZASW	Black   Black				
ZAWT	Cohiba Brown   Black				
ZAOW	Opal White   Black	<input type="checkbox"/>	<input type="checkbox"/>	<input type="checkbox"/>	<input type="checkbox"/>
Includes BMW Individual leather steering wheel Merino (XL3), except with M Sport Package (337) Only available in conjunction with BMW Individual roofliner Anthracite (775) and BMW Individual Door Sills (778), except with M Sport Package (337) Not available with Estoril Blue trim highlights (4DX) or Coral Red trim highlights (4DN)					

BMW Individual Options					
4M5	<b>BMW Individual instrument panel finished in Dakota leather</b> Only with Dakota leather (except for LCDF or LCLY) Only available with HiFi system Professional (676) or harman/kardon (688)	<input type="checkbox"/>	<input type="checkbox"/>	<input type="checkbox"/>	<input type="checkbox"/>
775	<b>BMW Individual roofliner in Anthracite</b>	<input type="checkbox"/>	<input type="checkbox"/>	<input type="checkbox"/>	<input type="checkbox"/>
778	<b>Door sill finishers with BMW Individual designation</b> Only available with BMW Individual Paintwork or BMW Individual Extended leather trim Not available with M Sport Package (337)	NCO	NCO	NCO	NCO
XL3	<b>BMW Individual leather steering wheel 'Merino'</b> Only available with extended leather trim 'Merino' and Driving Assistant (5AS) or/and Lane Change Warning (5AG) Not available with M Sport Package (337) When ordered in conjunction with Sport Line (7AC), 2XE must be specified	<input type="checkbox"/>	<input type="checkbox"/>	<input type="checkbox"/>	<input type="checkbox"/>



Experience BMW Individual interactive with the BMW Individual iPad app.

■ Standard □ Optional NCO No Cost Option

While BMW Group Australia has endeavoured to ensure that all information, representations, illustrations and specifications contained in these materials are accurate at the time of publication (6 May 2015), the information is general in nature only. Product features, specifications, models and prices are subject to change without notice. The general information in these materials should always be read in conjunction with information from authorised BMW dealers. To the extent permitted by law, BMW Group Australia excludes all express and implied warranties or guarantees and all liability, whether direct, indirect, special or consequential, arising from negligence or otherwise relating to the use of these materials, any inaccuracies and for any non-compliance by any vehicle with any representation, illustration, specification, description, product feature, colour, or other information contained in these materials.



## GENUINE BMW ACCESSORIES.

Driving a BMW is always a special experience, but it can be made even more so with Genuine BMW Accessories thanks to their combination of unique ideas, supreme functionality and stunning design.

Discover a wide range of innovative solutions, covering areas such as the exterior and interior, communication and information, as well as transportation and luggage compartment solutions.

For more information, please contact your preferred BMW Dealer who will be pleased to advise you on the full range of Genuine BMW Accessories, or visit [bmw.com.au/accessories](http://bmw.com.au/accessories).



**19" Double Spoke 361  
Bicolour light-alloy wheels**



**Luggage straps and Loading  
sill protective mat**



**Backrest bag and Storage  
bag with drinks holder**



**Snap in adaptor for  
iPhone**



**Base support system and  
Roof Box 460L**



**Base support system and  
Racing cycle holder**



**Fitted car cover**



**Key Holder – Sport Line**



## GENUINE BMW SERVICE.

When you buy a BMW, you can look forward to superb service and comprehensive customer care, with a network of dealerships Australia-wide ready to assist you at any time.

Your car informs you of its service requirements via the Condition Based Servicing system. Then simply get in touch with your preferred BMW Dealer who will provide expert care for you and your car.

BMW service costs can now be covered by a single, once-off advance payment ensuring you both driving pleasure and peace of mind in one. BMW Service Inclusive offers a choice of coverage levels available to suit individual requirements across the BMW range. With packages starting from \$990\*, BMW Service Inclusive takes care of your scheduled servicing for 5 years or 80,000kms, whichever comes first.

Staffed by highly trained personnel, your BMW Dealership is equipped with the latest computer-aided information and diagnostic tools. Important data such as the chassis number, mileage and current service requirements are all stored on your car key, ensuring quick assessment of your vehicle's status.

Naturally, your preferred BMW Dealer also has a comprehensive stock of Genuine BMW Parts for any eventuality.

All in all, quality and safety are the essence of BMW Service. Find out more at [bmw.com.au/service](http://bmw.com.au/service)



### BMW ROADSIDE ASSISTANCE & ACCIDENT MANAGEMENT.

To ensure your BMW delivers you with years of uninterrupted driving pleasure, it comes with the most comprehensive roadside care programme in Australia. This service is complimentary for three years, so you can rest assured in the knowledge that assistance is at hand 24 hours a day, 365 days a year.

Should you require assistance, simply dial BMW Roadside Assistance & Accident Management on the exclusive toll-free number: **1800 808 111**.

\*Pricing based on the BMW Service Inclusive Basic package. Scheduled servicing based on the vehicle's Condition Based Service monitoring system for 5 years from the date of first registration or up to 80,000kms, whichever occurs first. Normal wear and tear and other exclusions apply. Scheduled Servicing must be conducted by an authorised BMW dealer.





# BMW FINANCIAL SERVICES.

## Finance, Lease & Insurance.

BMW Group Financial Services is your one stop shop for all your Finance, Leasing and Insurance needs. Each BMW dealership has a dedicated Business Manager who can put together a tailored finance and insurance package, to make getting into your next BMW even easier.

### FINANCE & LEASE.

BMW Group Financial Services offers both loan and lease options to suit your requirements. Whether it is for a company vehicle or a car for your personal use, there are a range of products available to meet your needs.

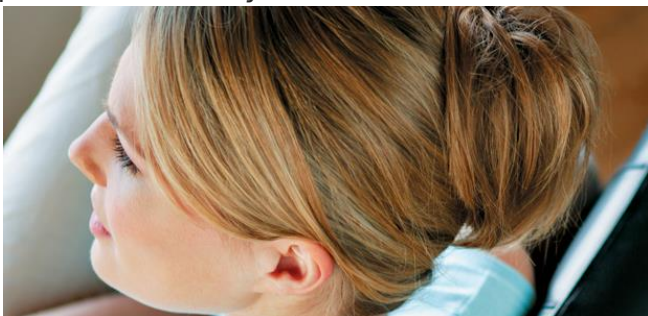
BMW Financial Services offers competitive rates, flexible terms, and no early termination or monthly account keeping fees\*.

As a BMW Financial Services Customer you also have access to the My BMW Account service which provides you with all your finance contract information 24 hours a day, 7 days a week. Simply log on at [myBMWaccount.com.au](http://myBMWaccount.com.au)



### INSURANCE.

BMW Insurance has you covered with an outstanding range of products to protect both your BMW and your BMW finance contract. With BMW Insurance you can not only ensure your BMW stays a BMW, but also enjoy peace of mind while you are on the road and off.



Our range of insurance products includes:

- BMW Motor Vehicle Insurance
- BMW Tyre & Rim Insurance
- BMW Extended Warranty Insurance
- BMW Loan Protection Insurance
- BMW Motor Equity Insurance
- BMW Leaseprotect Insurance
- BMW Purchase Price Insurance

Speak to your Business Manager today about our extensive range of Finance and Insurance products.

This insurance is issued by Allianz Australia Insurance Limited AFSL 234708 ABN 15 000 122 850. Please visit [bmwfinance.com.au](http://bmwfinance.com.au) and read a Products Disclosure statement to decide if these products are right for you.

\*BMW Financial Services is a division of BMW Australia Finance Limited. Australian credit licence 392387. Fees, charges, terms, conditions and approval criteria apply to BMW Financial Services finance products.



## BMW DRIVING EXPERIENCE.

If you've ever wondered why a BMW is the Ultimate Driving Machine, a BMW Driving Experience course is for you. If you've ever wondered what an Ultimate Driving Machine is capable of, this is the Ultimate test-drive.

Sign up for a BMW Driving Experience course and you will learn what these remarkable vehicles can really do. More importantly, you will also acquire essential skills that will enhance your driving ability and safety.

BMW Driving Experience was introduced in 1977, the first of its kind initiated by an automotive manufacturer to improve the skills, reactions and awareness of drivers.

Today more than ever, the 3-stage programme offers drivers a positive, exhilarating experience, along with an excellent education and an enthralling opportunity to accelerate their driving abilities. This is all conducted behind the wheel of an efficient and dynamic range of Ultimate Driving Machines.

The aim of the programme is to enhance each participant's driving ability by developing attitudes and skills through a structured sequence of courses. Each course takes participants through an increasingly challenging mix of low and high speed driving exercises, that help them respond effectively in emergency situations and become progressively more confident, safe and enthusiastic drivers.

Our courses are conducted at Australia's leading facilities, including the world renowned Phillip Island Grand Prix Circuit. All BMW Driving Experience courses are supervised by highly-trained instructors under the stewardship of Le Mans and Bathurst winner, Geoff Brabham.

BMW Driving Experience offers a range of courses, from the entry-level Intensive course, to the more advanced and exhilarating M Dynamic. The final BMW Driving Experience course on offer is the pinnacle of all, our exclusive Fascination course.

### BMW Intensive Driving Experience

An exciting introduction into performance driving, designed for confident drivers.

### BMW M Dynamic Driving Experience

After completing our Intensive Training course, drivers can take their skills to another level with this high-performance course designed to test their ability to the fullest.

### BMW Fascination Driving Experience

The last course offered in the BMW Driving Experience Programme. Fascination is the goal to reach for those who complete our Intensive and M Dynamic Driving Experience courses. Drivers apply all of the skills they have learned in previous courses, and have one-to-two tuition with our highly trained BMW Driving Experience Instructors.

To find out more about BMW Driving Experience courses and dates, please call **1800 000 269** or email **[bmw-drivingexperience@bmw.com.au](mailto:bmw-drivingexperience@bmw.com.au)** or visit **[bmw-drivingexperience.com.au](http://bmw-drivingexperience.com.au)**

**BMW 3 Series  
Sedan**



[bmw.com.au](http://bmw.com.au)

**The Ultimate  
Driving Machine**

While BMW Group Australia has endeavoured to ensure that all information, representations, illustrations and specifications contained in these materials are accurate at the time of publication (6 May 2015), the information is general in nature only. Product features, specifications, models and prices are subject to change without notice. The general information in these materials should always be read in conjunction with information from authorised BMW dealers. To the extent permitted by law, BMW Group Australia excludes all express and implied warranties or guarantees and all liability, whether direct, indirect, special or consequential, arising from negligence or otherwise relating to the use of these materials, any inaccuracies and for any non-compliance by any vehicle with any representation, illustration, specification, description, product feature, colour, or other information contained in these materials.

© BMW Australia Ltd (ABN 11 004 675 129) ("BMW Group Australia") and BMW AG, Munich/Germany. All rights reserved.