

BMW 3 Series  
Sedan



The Ultimate  
Driving Machine

[bmw.com.au](http://bmw.com.au)



# THE BMW 3 SERIES SEDAN.

## SPECIFICATION GUIDE.

**BMW EfficientDynamics**  
Less consumption. More driving pleasure.

# MODELS.

	Transmission	Cylinder / Capacity cm <sup>3</sup>	Power / Torque	Combined fuel consumption l/100km	Acceleration 0-100km/h
<b>Petrol Models</b>					
<b>318i</b>	8-speed automatic	3-cylinder 1,499	100kW 220Nm	5.4	9.1 sec
<b>320i</b>	8-speed sport automatic	4-cylinder 1,998	135 kW 270 Nm	5.8	7.3 sec
<b>330i</b>	8-speed sport automatic	4-cylinder 1,998	185 kW 350 Nm	5.8	5.8 sec
<b>340i</b>	8-speed sport automatic	6-cylinder 2,998	240 kW 450 Nm	6.8	5.1 sec

<b>Diesel Models</b>					
<b>320d</b>	8-speed sport automatic	4-cylinder 1,995	140 kW 400 Nm	4.4	7.2 sec

BMW recommends the use of RON 95 super unleaded petrol. Unleaded 91 RON and higher with a maximum ethanol content of 10% (E10) may also be used. Output and fuel consumption figures apply to RON98 fuel. All engines meet the EU5 emissions standard. Fuel consumption is determined in accordance with the ECE driving cycle (93/116/EU), which consists of approximately one third urban traffic and two thirds extra-urban driving (based on the distance covered). CO<sub>2</sub> emissions are measured in addition to fuel consumption. Optional equipment (e.g. wider tyres) can have a significant impact on fuel consumption.

## ■ Standard

While BMW Group Australia has endeavoured to ensure that all information, representations, illustrations and specifications contained in these materials are accurate at the time of publication (10 February 2016), the information is general in nature only. Product features, specifications, models and prices are subject to change without notice. The general information in these materials should always be read in conjunction with information from authorised BMW dealers. To the extent permitted by law, BMW Group Australia excludes all express and implied warranties or guarantees and all liability, whether direct, indirect, special or consequential, arising from negligence or otherwise relating to the use of these materials, any inaccuracies and for any non-compliance by any vehicle with any representation, illustration, specification, description, product feature, colour, or other information contained in these materials.

# STANDARD EQUIPMENT.

	318i	320i	320d	330i	340i
<b>Transmission and technology</b>					
<b>8-speed automatic transmission</b> , with gearshift indicator for manual mode	■				
<b>8-speed sport automatic transmission</b> with gearshift paddles on steering wheel, launch control, and gearshift indicator for manual mode		■	■	■	■
<b>Adaptive M suspension</b> with ride height lowered 10mm and shock absorber comfort adjustable by Driving Experience Control, giving a more sporting suspension setup without any loss in ride comfort		■	■	■	■
<b>Auto Start/Stop function</b> , reduces fuel consumption by switching off the engine when the vehicle comes temporarily to a stop	■	■	■	■	■
<b>BMW TwinPower Turbo three-cylinder petrol engine</b> combining one twin-scroll turbocharger with Valvetronic, Double-VANOS and High Precision Injection	■				
<b>BMW TwinPower Turbo four-cylinder petrol engine</b> combining one twin-scroll turbocharger with Valvetronic, Double-VANOS and High Precision Injection		■		■	
<b>BMW TwinPower Turbo four-cylinder diesel engine</b> with a turbocharger with variable turbine geometry and common rail direct injection			■		
<b>BMW TwinPower Turbo six-cylinder in-line petrol engine</b> combining one twin-scroll turbocharger with Valvetronic, Double-VANOS and High Precision Injection					■
<b>Brake Energy Regeneration</b> , improves fuel efficiency and ensures that the full power of the engine is available for acceleration	■	■	■	■	■
<b>Brake-pad wear indicator</b>	■	■	■	■	■
<b>Condition Based Service</b> , inspections are scheduled to suit the way in which the car is driven	■	■	■	■	■
<b>Diesel particle filter</b> (maintenance-free)			■		
<b>Driving Experience Control</b> , enables adjustment of drivetrain settings (ECO PRO, Comfort, Sport and Sport+) <b>Note:</b> Sport+ mode not standard for 318i	■	■	■	■	■
<b>ECO PRO Mode</b> , optimises fuel consumption and shows the potential fuel economy in the instrument cluster	■	■	■	■	■
<b>Electronic differential lock</b> , active in DSC Off mode	■	■	■	■	■
<b>Electric Power Steering with Servotronic</b>	■	■	■	■	
<b>Variable sport steering</b> , adjustment of the steering angle of the front wheels depending on the steering-wheel angle, direct and agile handling combined with reduced steering effort					■
<b>Start/Stop button</b> , incl. keyless engine start	■	■	■	■	■
<b>Safety</b>					
<b>Active Protection</b> , safety package for initiating protective measures for the occupants if an accident situation is imminent: belt tensioning, windows are closed, sliding sunroof is closed (if fitted). Incl. Attentiveness Assistant	■	■	■	■	■
<b>Airbags:</b> driver and front passenger airbags, head airbags in the front and rear, side airbags for driver and front passenger	■	■	■	■	■
<b>Brakes:</b> disc brakes at the front and rear, inner-vented	■	■	■	■	■
<b>Central locking</b> with electronic immobiliser, crash sensor; fuel tank filler cap integrated into central locking system	■	■	■	■	■
<b>Dynamic braking lights</b> , flashing brake lights and hazard indicator under extreme braking	■	■	■	■	■
<b>Dynamic Stability Control (DSC)</b> incl. Antilock Braking System (ABS), Brake Assistant, Cornering Brake Control (CBC) and Dynamic Traction Control (DTC)	■	■	■	■	■
<b>Safety body shell:</b> deformation zones at the front and rear, easily-replaceable deformation elements that absorb impacts at speeds up to 15 km/h; integrated side impact protection in doors	■	■	■	■	■
<b>Seat belts:</b> three-point seat belts for all rear seats; three-point inertia-reel seat belts in the front with belt tensioners and belt force limiters	■	■	■	■	■
<b>Warning triangle and first aid kit</b>	■	■	■	■	■

## ■ Standard

While BMW Group Australia has endeavoured to ensure that all information, representations, illustrations and specifications contained in these materials are accurate at the time of publication (10 February 2016), the information is general in nature only. Product features, specifications, models and prices are subject to change without notice. The general information in these materials should always be read in conjunction with information from authorised BMW dealers. To the extent permitted by law, BMW Group Australia excludes all express and implied warranties or guarantees and all liability, whether direct, indirect, special or consequential, arising from negligence or otherwise relating to the use of these materials, any inaccuracies and for any non-compliance by any vehicle with any representation, illustration, specification, description, product feature, colour, or other information contained in these materials.

# STANDARD EQUIPMENT.

	318i	320i	320d	330i	340i
<b>Wheels and tyres</b>					
<b>18" BMW light-alloy wheels</b> (styling dependent on selected BMW Line) 8 J x 18" with 225/45 R18	■	■	■		
<b>19" BMW light-alloy wheels</b> (styling dependent on selected BMW Line/Package), front 8 J x 19" with 225/40 R19, rear 8.5 J x 19" with 255/35 R19 run-flat safety tyres				■	■
<b>Locking wheel bolts</b>	■	■	■	■	■
<b>Run-flat safety tyres</b> incl. run-flat indicator	■	■	■	■	■
<b>Exterior design</b>					
<b>Exhaust pipe</b> , 75mm, single, round, left, (styling dependent on selected BMW Line)	■				
<b>Exhaust pipe</b> , 70mm, dual, round, left (styling dependent on selected BMW Line)		■	■	■	
<b>Exhaust pipes</b> , 80mm, single, round, left and right (styling dependent on selected BMW Line)					■
<b>Exterior mirror housing with integrated additional turn indicator</b> , mirror caps in body colour	■	■	■	■	■
<b>Ornamental front grille</b> (styling dependent on selected BMW Line)	■	■	■	■	■
<b>Window recess cover</b> (styling dependent on selected BMW Line)	■	■	■	■	■
<b>BMW ConnectedDrive</b>					
<b>Intelligent Emergency Call</b> , BMW ConnectedDrive automated transmission of vehicle accident information and telephone call for assistance to the BMW ConnectedDrive Call Centre. Emergency services are informed by the BMW ConnectedDrive Call Centre on behalf of the customer and deployed if required. Manual emergency call can also be initiated via SOS button	■	■	■	■	■
<b>TeleServices</b> , BMW ConnectedDrive automated transmission of service-related vehicle data to your preferred service dealer. Includes TeleServices Battery Guard and BMW Breakdown calls to Roadside Assistance	■	■	■	■	■
<b>Real Time Traffic Information</b> : display of current traffic information in the navigation map with expected travel time delays to your destination. Includes suggestions on alternative routes. 3 year subscription	■	■	■	■	■
<b>ConnectedDrive Lifestyle</b> - <b>ConnectedDrive Services</b> : internet-based services including BMW Online (News, Weather, Google local search, Office, Apps), and the BMW Connected App. 3 year subscription - <b>Remote Services</b> : remote door lock/unlock, ventilation control, headlight flash, Google local search with send-to-car function and vehicle finder	■	■	■	■	
<b>ConnectedDrive Freedom</b> <b>Includes ConnectedDrive Lifestyle + Concierge Services</b> : 24/7 assistance via ConnectedDrive call centre at the touch of a button, for assistance with searching for destinations, POIs, and sends these addresses to your vehicle. 3yr subscription					■
<b>Internet</b> , BMW ConnectedDrive in-vehicle internet access via the pre-fitted vehicle SIM card. When stationary, websites can be called up on the Control Display by entering the URL using the iDrive Touch Controller. 1yr subscription					■
<b>Driver assistance</b>					
<b>Active Cruise Control</b> with Stop&Go function, incl. collision warning, cruise control and distance control operated by radar sensors					■
<b>Cruise Control with braking function</b>	■	■	■	■	
<b>Driving Assistant</b> , incl. Approach Control Warning, Lane Departure Warning, pedestrian warning/approach control warning with light city braking function	■	■	■	■	■
<b>Head-Up Display</b> , important driving information is projected onto the windscreen in the driver's field of vision	■	■	■	■	■
<b>Lane Change Warning System</b> , detects and alerts driver to vehicles in driver's blind spot when the indicator is activated, with a discreet vibration of the steering wheel and visual warning on the exterior mirror	■	■	■	■	■
<b>Park Distance Control (PDC)</b> , front and rear	■	■	■	■	■
<b>Parking Assistant</b> , uses ultrasonic sensors to search for and identify parallel parking and/or 90 degree parking spaces, then steers the vehicle into the space whilst the driver operates the accelerator and brake					■
<b>Rear View Camera</b>	■	■	■	■	■
<b>Speed limit device</b> , enables setting of desired maximum speed; indicator in the control display and in the instrument cluster. Can be overridden when necessary	■	■	■	■	■
<b>Surround View</b> incl. Top View and Side View. Top View provides a bird's-eye perspective of the vehicle; Side View provides visibility in situations where vision is obscured, through cameras located each side of the front bumper	■	■	■	■	■

## ■ Standard

While BMW Group Australia has endeavoured to ensure that all information, representations, illustrations and specifications contained in these materials are accurate at the time of publication (10 February 2016), the information is general in nature only. Product features, specifications, models and prices are subject to change without notice. The general information in these materials should always be read in conjunction with information from authorised BMW dealers. To the extent permitted by law, BMW Group Australia excludes all express and implied warranties or guarantees and all liability, whether direct, indirect, special or consequential, arising from negligence or otherwise relating to the use of these materials, any inaccuracies and for any non-compliance by any vehicle with any representation, illustration, specification, description, product feature, colour, or other information contained in these materials.

# STANDARD EQUIPMENT.

	318i	320i	320d	330i	340i
<b>Light and sight</b>					
<b>LED headlights</b> , with automatic headlight range controls, and accent lights with LED technology. The front LED light rings are flattened at the top and bottom and feature a daytime running light function	■	■	■	■	■
<b>Adaptive LED headlights</b> , with variable light distribution, incl. cornering lights. Illuminates bends as the driver turns the steering wheel Includes LED Foglights and High-Beam Assist					■
<b>Fog lights</b> , incl. heated exterior mirrors and windscreen washer jets	■	■	■	■	
<b>LED Fog lights</b>					■
<b>Glove box opener with Chrome highlights</b>	■	■	■	■	■
<b>Heat/sun protection glass</b>	■	■	■	■	■
<b>High-Beam Assist</b> , switches automatically between high and low beam					■
<b>Interior and exterior mirrors with automatic anti-dazzle function</b> , aspheric exterior mirror on passenger side, with automatic parking function and electric fold-in function	■	■	■	■	■
<b>Interior lights</b> , front and rear interior lights, luggage compartment light	■				
<b>Lights package</b> , incl. LED rear interior light and reading lights, LED front reading lights, LED vanity mirror lighting for driver and front passenger, ambience lighting, ambience light for door upholstery inserts, centre stack storage compartment and centre console storage compartment, footwell lights with ambience light at front, handle-area lighting in the door handles, exit lights in the doors and LED luggage compartment light		■	■	■	■
<b>Rain sensor</b> , incl. automatic headlight activation	■	■	■	■	■
<b>Rear lights with LED technology</b>	■	■	■	■	■
<b>Interior design</b>					
<b>BMW Individual instrument panel finished in Dakota leather</b>					■
<b>Door sill finishers</b> , Black high-gloss, front with BMW Line designation	■	■	■	■	■
<b>Interior trim</b> (styling dependent on selected BMW Line)	■	■	■	■	■
<b>Upholstery</b> , Sensatec man-made leather	■	■	■		
<b>Upholstery</b> , Dakota leather				■	■
<b>Comfort and interior equipment</b>					
<b>Automatic air conditioning</b> , 2-zone with extended contents. Fully automatic temperature stratification and air volume control, separate temperature control for driver's and passenger sides, variable-temperature rear interior ventilation by nozzles in centre console, including solar sensor and fogging sensor, Max-Cool button and active carbon microfilter	■	■	■	■	■
<b>Comfort Access System</b> , keyless access to the vehicle incl. automatic tailgate operation				■	■
<b>Cupholders</b> , front	■	■	■	■	■
<b>Floor mats in Velour</b>	■	■	■	■	■
<b>Front armrest</b> , sliding adjustment and integrated storage compartment	■	■	■	■	■
<b>Manual seat adjustment</b> , height, seat fore-and-aft position, backrest rake and headrest height	■				
<b>Electric seat adjustment with memory function</b>		■	■	■	■
<b>Lumbar support</b> , electric, for driver and front passenger					■
<b>Personal Profile</b> , personalisation of important controls	■	■	■	■	■
<b>Rear seat backrest</b> , foldable, 40:20:40 split	■	■	■	■	■
<b>Roller sunblind for rear window</b> , electrical					■
<b>Roller sunblind for rear side windows</b> , mechanical					■
<b>Seat heating for driver and front passenger</b>					■
<b>Steering wheel, Sport leather</b> with multifunction buttons and gearshift paddles Gearshift paddles not available on 318i	■	■	■	■	■

## ■ Standard

While BMW Group Australia has endeavoured to ensure that all information, representations, illustrations and specifications contained in these materials are accurate at the time of publication (10 February 2016), the information is general in nature only. Product features, specifications, models and prices are subject to change without notice. The general information in these materials should always be read in conjunction with information from authorised BMW dealers. To the extent permitted by law, BMW Group Australia excludes all express and implied warranties or guarantees and all liability, whether direct, indirect, special or consequential, arising from negligence or otherwise relating to the use of these materials, any inaccuracies and for any non-compliance by any vehicle with any representation, illustration, specification, description, product feature, colour, or other information contained in these materials.

# STANDARD EQUIPMENT.

	318i	320i	320d	330i	340i
<b>Comfort and interior equipment (cont.)</b>					
<b>Storage compartments</b> in front doors with bottle holders	■	■	■	■	■
<b>Storage package</b> incl. fold-down compartment in the instrument panel, segmented cupholders with chrome rings, nets on the backs of the front seats, rear door pockets, two additional 12V sockets, storage net on the right side of the luggage compartment, fastening strap on the right side of the luggage compartment, net on the floor of the luggage compartment and two fastening points	■	■	■	■	■
<b>Entertainment, communication and information</b>					
<b>AUX-IN connection</b> , incl. 12V socket in the centre console	■	■	■	■	■
<b>Bluetooth</b> , enables wireless connection of a compatible Bluetooth mobile phone to the vehicle, including audio streaming Check the compatibility of your mobile phone at <a href="http://bmw.com/Bluetooth">bmw.com/Bluetooth</a>	■	■	■	■	
<b>Convenience telephony with extended Smartphone connectivity</b> Provision for snap-in adapter (available separately through Genuine BMW Accessories) for charging function and connection to external aerial Includes extended Bluetooth functionality such as pairing of multiple devices and more, depending on the features of the Bluetooth/USB device Check the compatibility of your mobile phone at <a href="http://bmw.com/Bluetooth">bmw.com/Bluetooth</a>					■
<b>DAB+ digital radio tuner</b> , exceptional sound quality, improved reception and a wide range of special-interest channels		■	■	■	■
<b>Stereo Loudspeaker system</b> , 6 loudspeakers, 100W, 6 programmable memory buttons, MP3-compatible CD drive	■	■	■	■	
<b>harman/kardon Surround Sound System</b> , 16 high-end loudspeakers, 600W digital amplifier with individually adjustable equaliser, 9 channels and chrome applications, 6 programmable memory buttons and MP3-compatible CD drive					■
<b>Instrument cluster with extended contents</b> , incl. high-resolution display for vehicle information including check control messages, navigation guidance directions, additional ECO PRO data and extended lists e.g. phonebook or radio stations	■	■	■	■	■
<b>Navigation system Business</b> , incl. iDrive Controller with added functionality, high-resolution built-in 6.5" display for showing maps or a combination of maps with directional arrows, an integrated hard disc for navigation data and electronic owner's handbook	■	■	■		
<b>Navigation system Professional</b> , incl. iDrive Touch Controller with added functionality, high-resolution built-in 8.8" colour display, DVD drive, 3D map and arrow display, as well as bird's-eye view, integrated hard disc for navigation including 20GB storage for audio files and electronic owner's handbook				■	■
<b>On-board computer</b> , incl. Check Control, and consumption, range, speed and outside temperature on Info Display	■	■	■	■	■
<b>USB audio interface</b> , enables connection of an MP3 player, Apple iPod or USB memory stick via the USB interface	■	■	■	■	■

■ Standard

While BMW Group Australia has endeavoured to ensure that all information, representations, illustrations and specifications contained in these materials are accurate at the time of publication (10 February 2016), the information is general in nature only. Product features, specifications, models and prices are subject to change without notice. The general information in these materials should always be read in conjunction with information from authorised BMW dealers. To the extent permitted by law, BMW Group Australia excludes all express and implied warranties or guarantees and all liability, whether direct, indirect, special or consequential, arising from negligence or otherwise relating to the use of these materials, any inaccuracies and for any non-compliance by any vehicle with any representation, illustration, specification, description, product feature, colour, or other information contained in these materials.

# SPORT LINE.

		318i	320i	320d	330i
7AC	<b>Sport Line</b>	NCO	NCO	NCO	NCO
<b>Sport Line content</b>					
	<b>18" BMW light-alloy wheels Double-spoke styling 397</b> , front 8J x 18" with 225/45 R18, rear 8.5J x 18" with 255/40 R18 run-flat safety tyres	■	■	■	
	<b>19" BMW light-alloy wheels Double-spoke styling 407</b> , front 8 J x 19" with 225/40 R19, rear 8.5 J x 19" with 255/35 R19 run-flat safety tyres				■
	<b>Ambience light</b> , front, rear, front footwell and storage compartment centre console, switchable between Light Orange and LED White, and welcome light switchable between White or Cold White	■	■	■	■
	<b>Chrome Pearl Grey surrounds on the air conditioning and radio controls</b>	■	■	■	■
	<b>Door sill finishers in aluminium with "BMW Sport" designation</b>	■	■	■	■
	<b>Driving experience control with additional Sport+ mode</b> (already standard on all except 318i)	■	■	■	■
	<b>Exclusive High-Gloss Black trims</b> , front (e.g. Kidney grille), rear bumper finisher and B pillar. Tailpipe finisher in Black Chrome	■	■	■	■
	<b>Interior trim</b> , Black High-Gloss with Coral Red highlights (4LV)	■	■	■	■
	<b>Red detailing on the car key</b>	■	■	■	■
	<b>Speedometer and rev counter with Red chronoscales</b>	■	■	■	■
	<b>"Sport" designation left/right on front side panel</b>	■	■	■	■
	<b>Sport leather steering wheel</b> with Red contrast stitching	■	■	■	■
	<b>Sport Seats for driver and front passenger</b>	■	■	■	■
	<b>Upholstery</b> , Sensatec Black (KCSW), Veneto Beige (KCDF) or Black with Red highlight (KCL3)	■	■	■	
	<b>Upholstery</b> , Dakota leather (see below for colour availability)				■
<b>Options exclusive to Sport Line</b>					
24B	<b>18" BMW light-alloy wheels Double-spoke styling 397</b> , front 8J x 18" with 225/45 R18, rear 8.5J x 18" with 255/40 R18 run-flat safety tyres	■	■	■	NCO
2XE	<b>Sport leather steering wheel, Black</b> , deletes Red contrast stitching	NCO	NCO	NCO	NCO
4FW	<b>Interior trim</b> , Fine-wood Burl Walnut with Pearl Gloss Chrome highlights	□	□	□	□
4FT	<b>Interior trim</b> , Fine Brushed Aluminium with high-gloss Black highlights	□	□	□	NCO
4LS	<b>Interior trim</b> , Fine Brushed Aluminium with Pearl Gloss Chrome highlights	□	□	□	NCO
4FU	<b>Interior trim</b> , Fine-wood Fineline Anthracite with Pearl Gloss chrome highlights	□	□	□	□
4GA	<b>Interior trim</b> , Fine-wood Ash Grain with metal inlay and Pearl Gloss chrome highlights	□	□	□	□
4LU	<b>Interior trim</b> , Black High-Gloss with Pearl Gloss chrome highlights	NCO	NCO	NCO	NCO
3BE	<b>High-Gloss Black exterior mirror caps</b>	NCO	NCO	NCO	NCO
3DZ	<b>Deletion of "Sport" designation</b>	NCO	NCO	NCO	NCO
760	<b>BMW Individual High-Gloss Shadow Line</b>	□	□	□	□
704	<b>M Sport Suspension</b> , stiffer suspension spring and damper setup with vehicle lowered by 10mm	□			
LC	<b>Upholstery</b> , Dakota leather Black (LCSW), Black with Red highlight (LCL3), Oyster with Black interior world (LCOM), Coral Red with Black highlight (LCL5), Veneto Beige (LCDF), Veneto Beige with Oyster Highlight (LCFJ), Black with Oyster Highlight (LCL8), Saddle Brown with Brown Highlight (LCDJ) <b>Note:</b> when Dakota leather Oyster (LCOM) is selected, Black steering wheel without Red stitching (2XE) must be specified	□	□	□	■

■ Standard □ Optional NCO No Cost Option

While BMW Group Australia has endeavoured to ensure that all information, representations, illustrations and specifications contained in these materials are accurate at the time of publication (10 February 2015), the information is general in nature only. Product features, specifications, models and prices are subject to change without notice. The general information in these materials should always be read in conjunction with information from authorised BMW dealers. To the extent permitted by law, BMW Group Australia excludes all express and implied warranties or guarantees and all liability, whether direct, indirect, special or consequential, arising from negligence or otherwise relating to the use of these materials, any inaccuracies and for any non-compliance by any vehicle with any representation, illustration, specification, description, product feature, colour, or other information contained in these materials.

# LUXURY LINE.

		316i	320i	320d	330i	340i
<b>Price</b>						
7S2	Luxury Line	□	□	□	NCO	NCO

<b>Luxury Line content</b>						
<b>18" BMW light-alloy wheels Multi-spoke styling 416</b> , 8 J x 18" with 225/45 R18 run-flat safety tyres		■	■	■		
<b>19" BMW light-alloy wheels Double-spoke styling 407</b> , front 8 J x 19" with 225/40 R19, rear 8.5 J x 19" with 255/35 R19 run-flat safety tyres					■	■
<b>Ambience light</b> , front, rear, front footwell, B-pillar and storage compartment centre console switchable between BMW Classic Light Orange and LED Cold White, and welcome light switchable between White and Cold White		■	■	■	■	■
<b>B pillar in high-gloss Black</b>		■	■	■	■	■
<b>Chrome detailing on the car key</b>		■	■	■	■	■
<b>Chrome Pearl Grey surrounds on the air conditioning and radio controls</b>		■	■	■	■	■
<b>Door sill finishers with inserts in aluminium with "BMW Luxury" designation</b>		■	■	■	■	■
<b>Exclusive Chrome trims on the front (e.g. Kidney grille) and rear incl. exhaust tailpipe</b>		■	■	■	■	■
<b>Interior trim</b> , Fine-wood Fineline Anthracite with Pearl Dark Gloss chrome highlights (4FU)		■	■	■	■	
<b>Interior trim</b> , Fine-wood Ash Grain with metal inlay and Pearl Gloss chrome highlights (4GA)						■
<b>"Luxury" designation left/right on front side panel</b>		■	■	■	■	■
<b>Upholstery</b> , Dakota leather (see below for colour availability)		■	■	■	■	■
<b>Window recess finishers in Chrome</b>		■	■	■	■	■

<b>Options exclusive to Luxury Line</b>						
2H2	<b>18" BMW light-alloy wheels Multi-spoke styling 416</b> , 8 J x 18" with 225/45 R18 run-flat safety tyres	■	■	■	NCO	
3DZ	<b>Deletion of "Luxury" designation</b>	NCO	NCO	NCO	NCO	NCO
4FW	<b>Interior trim</b> , Fine-wood Burlled Walnut with Pearl Gloss Chrome highlights	NCO	NCO	NCO	NCO	NCO
4FT	<b>Interior trim</b> , Fine-Brushed Aluminium with Black High-Gloss highlights	NCO	NCO	NCO	NCO	NCO
4GA	<b>Interior trim</b> , Fine-wood Ash Grain with metal inlay and Pearl Gloss chrome highlights	□	□	□	□	■
4LS	<b>Interior trim</b> , Fine-Brushed Aluminium with Pearl Gloss Chrome highlights	NCO	NCO	NCO	NCO	NCO
LC	<b>Upholstery</b> , Dakota leather, available in Black (LCSW), Oyster with Black instrument panel (LCOM), Veneto Beige (LCDF), Saddle Brown with Bi-Colour Instrument Panel (LCDY), Veneto Beige with Oyster Highlight (LCFJ), Black with Oyster Highlight (LCL8)	■	■	■	■	■

■ Standard □ Optional NCO No Cost Option

While BMW Group Australia has endeavoured to ensure that all information, representations, illustrations and specifications contained in these materials are accurate at the time of publication (10 February 2015), the information is general in nature only. Product features, specifications, models and prices are subject to change without notice. The general information in these materials should always be read in conjunction with information from authorised BMW dealers. To the extent permitted by law, BMW Group Australia excludes all express and implied warranties or guarantees and all liability, whether direct, indirect, special or consequential, arising from negligence or otherwise relating to the use of these materials, any inaccuracies and for any non-compliance by any vehicle with any representation, illustration, specification, description, product feature, colour, or other information contained in these materials.



# M SPORT PACKAGE.

		318i	320i	320d	330i	340i
337	<b>M Sport Package</b>	<input type="checkbox"/>	<input type="checkbox"/>	<input type="checkbox"/>	<input type="checkbox"/>	NCO

## M Sport Package content

<b>19" BMW M light-alloy wheels, Star-spoke 403M</b> , front 8 J x 19" with 225/40 R19, rear 8.5 J x 19" with 255/35 R19 run-flat safety tyres. Snow chains cannot be fitted	<input checked="" type="checkbox"/>	<input checked="" type="checkbox"/>	<input checked="" type="checkbox"/>	<input checked="" type="checkbox"/>	<input checked="" type="checkbox"/>
<b>Ambience light switchable between Classic Orange and LED Cold White</b>	<input checked="" type="checkbox"/>	<input checked="" type="checkbox"/>	<input checked="" type="checkbox"/>	<input checked="" type="checkbox"/>	<input checked="" type="checkbox"/>
<b>BMW Individual High-Gloss Shadow Line</b>	<input checked="" type="checkbox"/>	<input checked="" type="checkbox"/>	<input checked="" type="checkbox"/>	<input checked="" type="checkbox"/>	<input checked="" type="checkbox"/>
<b>BMW Individual roofliner Anthracite</b>	<input checked="" type="checkbox"/>	<input checked="" type="checkbox"/>	<input checked="" type="checkbox"/>	<input checked="" type="checkbox"/>	<input checked="" type="checkbox"/>
<b>Blue detailing on the car key</b>	<input checked="" type="checkbox"/>	<input checked="" type="checkbox"/>	<input checked="" type="checkbox"/>	<input checked="" type="checkbox"/>	<input checked="" type="checkbox"/>
<b>Exhaust tailpipes in High-Gloss Chrome</b>	<input checked="" type="checkbox"/>	<input checked="" type="checkbox"/>	<input checked="" type="checkbox"/>	<input checked="" type="checkbox"/>	<input checked="" type="checkbox"/>
<b>Interior trim Aluminium Hexagon with Estoril Blue matt highlights (4WF)</b>	<input checked="" type="checkbox"/>	<input checked="" type="checkbox"/>	<input checked="" type="checkbox"/>	<input checked="" type="checkbox"/>	<input checked="" type="checkbox"/>
<b>Instrument cluster with specific gauge-dial printing and chronoscale</b>	<input checked="" type="checkbox"/>	<input checked="" type="checkbox"/>	<input checked="" type="checkbox"/>	<input checked="" type="checkbox"/>	<input checked="" type="checkbox"/>
<b>Kidney grille, 8 bars in high-gloss Black</b>	<input checked="" type="checkbox"/>	<input checked="" type="checkbox"/>	<input checked="" type="checkbox"/>	<input checked="" type="checkbox"/>	<input checked="" type="checkbox"/>
<b>LED Fog lights</b>	<input checked="" type="checkbox"/>	<input checked="" type="checkbox"/>	<input checked="" type="checkbox"/>	<input checked="" type="checkbox"/>	<input checked="" type="checkbox"/>
<b>M Aerodynamics package</b>	<input checked="" type="checkbox"/>	<input checked="" type="checkbox"/>	<input checked="" type="checkbox"/>	<input checked="" type="checkbox"/>	<input checked="" type="checkbox"/>
<b>M door sill finishers</b>	<input checked="" type="checkbox"/>	<input checked="" type="checkbox"/>	<input checked="" type="checkbox"/>	<input checked="" type="checkbox"/>	<input checked="" type="checkbox"/>
<b>M leather steering wheel</b>	<input checked="" type="checkbox"/>	<input checked="" type="checkbox"/>	<input checked="" type="checkbox"/>	<input checked="" type="checkbox"/>	<input checked="" type="checkbox"/>
<b>M Sport Suspension</b> , stiffer suspension spring and damper setup with vehicle lowered by 10mm <small>Note: Adaptive M Suspension standard for all variants except 318i</small>	<input checked="" type="checkbox"/>				
<b>Sport Seats for driver and front passenger</b>	<input checked="" type="checkbox"/>	<input checked="" type="checkbox"/>	<input checked="" type="checkbox"/>	<input checked="" type="checkbox"/>	<input checked="" type="checkbox"/>
<b>Upholstery</b> , Dakota leather, available in Black (LCSW), Coral Red with Black highlight (LCL5), Oyster with Black interior world (LCOM), Veneto Beige with Oyster Highlight (LCFJ), Black with Oyster Highlight (LCL8), Saddle Brown with Brown Highlight (LCDJ)	<input checked="" type="checkbox"/>	<input checked="" type="checkbox"/>	<input checked="" type="checkbox"/>	<input checked="" type="checkbox"/>	<input checked="" type="checkbox"/>

## M Sport Package options

21C	<b>19" BMW M light-alloy wheels, Double-spoke 442M, Orbit Grey</b> , front 8 J x 19" with 225/40 R19, rear 8.5 J x 19" with 255/35 R19 run-flat safety tyres	<input type="checkbox"/>	<input type="checkbox"/>	<input type="checkbox"/>	<input type="checkbox"/>	<input type="checkbox"/>
2NH	<b>M Sport Brakes</b> , 4 piston aluminium fixed-calliper and 2 piston rear calliper painted Blue with M badge <small>Only available with M Sport Package</small>	<input type="checkbox"/>	<input type="checkbox"/>	<input type="checkbox"/>	<input type="checkbox"/>	<input type="checkbox"/>
2VF	<b>Adaptive M Suspension</b>	<input type="checkbox"/>	<input checked="" type="checkbox"/>	<input checked="" type="checkbox"/>	<input checked="" type="checkbox"/>	<input checked="" type="checkbox"/>
B45	<b>Estoril Blue metallic paintwork</b> <small>Only available with M Sport Package</small>	<input type="checkbox"/>	<input type="checkbox"/>	<input type="checkbox"/>	<input type="checkbox"/>	<input type="checkbox"/>
4FW	<b>Interior trim</b> , Fine-wood Burlled Walnut with Pearl Gloss Chrome highlights	<input type="checkbox"/>	<input type="checkbox"/>	<input type="checkbox"/>	<input type="checkbox"/>	<input type="checkbox"/>
4FT	<b>Interior trim</b> , Fine-Brushed Aluminium with Black High-Gloss highlights	NCO	NCO	NCO	NCO	NCO
4FU	<b>Interior trim</b> , Fine-wood trim 'Fineline' anthracite with Pearl Gloss Chrome highlights	<input type="checkbox"/>	<input type="checkbox"/>	<input type="checkbox"/>	<input type="checkbox"/>	<input type="checkbox"/>
4GA	<b>Interior trim</b> , Fine-wood Ash Grain with metal inlay and Pearl Gloss chrome highlights	<input type="checkbox"/>	<input type="checkbox"/>	<input type="checkbox"/>	<input type="checkbox"/>	<input type="checkbox"/>
4LS	<b>Interior trim</b> , Fine-Brushed Aluminium with Pearl Gloss Chrome highlights	NCO	NCO	NCO	NCO	NCO
4WG	<b>Interior trim</b> , Aluminium Hexagon with Black High-Gloss highlights	NCO	NCO	NCO	NCO	NCO

■ Standard □ Optional NCO No Cost Option

While BMW Group Australia has endeavoured to ensure that all information, representations, illustrations and specifications contained in these materials are accurate at the time of publication (10 February 2015), the information is general in nature only. Product features, specifications, models and prices are subject to change without notice. The general information in these materials should always be read in conjunction with information from authorised BMW dealers. To the extent permitted by law, BMW Group Australia excludes all express and implied warranties or guarantees and all liability, whether direct, indirect, special or consequential, arising from negligence or otherwise relating to the use of these materials, any inaccuracies and for any non-compliance by any vehicle with any representation, illustration, specification, description, product feature, colour, or other information contained in these materials.

# OPTIONAL EQUIPMENT.

		318i	320i	320d	330i	340i
<b>Wheels and tyres</b>						
2P5	<b>BMW light-alloy wheels Turbine styling 415</b> , 8 J x 18" with 225/45 R18 run-flat safety tyres	NCO	NCO	NCO		
23C	<b>BMW light-alloy wheels V-spoke styling 658</b> , front 8 J x 18" with 225/45 R18, rear 8.5 J x 18" with 255/40 R18 run-flat safety tyres	□	□	□		
2FM	<b>BMW light-alloy wheels V-spoke styling 398</b> , front 8 J x 18" with 225/45 R18, rear 8.5 J x 18" with 255/40 R18 run-flat safety tyres	□	□	□		
2T1	<b>BMW light-alloy wheels Double-spoke styling 407</b> , front 8 J x 19" with 225/40 R19, rear 8.5 J x 19" with 255/35 R19 run-flat safety tyres	□	□	□	■	■

<b>Innovations Package</b>						
<p><b>Active Cruise Control</b> with Stop&amp;Go function, incl. collision warning, cruise control and distance control operated by radar sensors</p> <p>Note: 320i, 320d, 330i only. Not available on 318i. Only available with Automatic Transmission</p> <p><b>Parking Assistant</b>, uses ultrasonic sensors to search for and identify parallel parking and/or 90 degree parking spaces, then steers the vehicle into the space whilst the driver operates the accelerator and brake</p> <p><b>Navigation system Professional</b>, incl. iDrive Touch Controller with added functionality, high-resolution built-in 8.8" colour display, quick-start function, DVD drive, 3D map and arrow display, bird's-eye view display, integrated hard disc for navigation including 20GB storage for audio files</p> <p>Note: Already standard on 330i</p> <p><b>Convenience telephony with extended Smartphone connectivity</b>, provision for snap-in adapter (available separately through Genuine BMW Accessories) for charging function and connection to external aerial</p> <p>Includes extended Bluetooth functionality such as pairing of multiple devices and more, depending on the features of the Bluetooth/USB device</p> <p>Check the compatibility of your mobile phone at <a href="http://bmw.com/Bluetooth">bmw.com/Bluetooth</a></p> <p>Innovations Package not available with Manual Transmission (Z9A)</p>						
Z1A		□	□	□	□	■

<b>Visibility Package</b>						
<p><b>Sun protection glazing</b>, darker tinted glass for rear and rear side windows</p> <p><b>Headlight Washer System</b>, high-pressure system for cleaning main headlights with automatically extending lifter jet.</p> <p><b>Lights Package</b>, incl. LED rear interior light and reading lights, LED front reading lights, LED vanity mirror lighting for driver and front passenger, ambience lighting, ambience light for door upholstery inserts, centre stack storage compartment and centre console storage compartment, footwell lights with ambience light at front, handle-area lighting in the door handles, exit lights in the doors and LED luggage compartment light</p> <p>Note: 318i only. Already standard on 320i, 320d, 330i</p> <p><b>Adaptive LED headlights</b>, with variable light distribution, incl. cornering lights. Illuminates bends as the driver turns the steering wheel</p> <p>Includes LED Fog Lights and High-Beam Assist</p>						
Z1E		□	□	□	□	-

■ Standard □ Optional NCO No Cost Option

While BMW Group Australia has endeavoured to ensure that all information, representations, illustrations and specifications contained in these materials are accurate at the time of publication (10 February 2015), the information is general in nature only. Product features, specifications, models and prices are subject to change without notice. The general information in these materials should always be read in conjunction with information from authorised BMW dealers. To the extent permitted by law, BMW Group Australia excludes all express and implied warranties or guarantees and all liability, whether direct, indirect, special or consequential, arising from negligence or otherwise relating to the use of these materials, any inaccuracies and for any non-compliance by any vehicle with any representation, illustration, specification, description, product feature, colour, or other information contained in these materials.

# OPTIONAL EQUIPMENT.

		318i	320i	320d	330i	340i
<b>Comfort Package</b>						
Z1H	<b>Comfort Access System</b> , keyless access to the vehicle incl. exterior handle area lighting and automatic tailgate operation Note: Already standard on 330i <b>Roller sunblind for rear window, electric</b> <b>Electric seat adjustment with memory function</b> Note: Already standard on 320i, 320d, 330i <b>Lumbar support, electric</b> , for driver and front passenger <b>Seat heating for driver and front passenger</b>	<input type="checkbox"/>	<input type="checkbox"/>	<input type="checkbox"/>	<input type="checkbox"/>	<input checked="" type="checkbox"/>
248	<b>Steering wheel heating</b>	<input type="checkbox"/>	<input type="checkbox"/>	<input type="checkbox"/>	<input type="checkbox"/>	<input type="checkbox"/>
2VB	<b>Tyre pressure monitor</b> , electric monitoring system, displays each tyre pressure and warns of pressure loss with 3 stages of warning	<input type="checkbox"/>	<input type="checkbox"/>	<input type="checkbox"/>	<input type="checkbox"/>	<input type="checkbox"/>
2VF	<b>Adaptive M suspension</b> with ride height lowered 10mm and shock absorber comfort adjustable by Driving Experience Control, giving a more sporting suspension setup without any loss in ride comfort Not available with M Sport Suspension (704) See page 9 for pricing in conjunction with M Sport Package	<input type="checkbox"/>	<input checked="" type="checkbox"/>	<input checked="" type="checkbox"/>	<input checked="" type="checkbox"/>	<input checked="" type="checkbox"/>
2VL	<b>Variable Sport Steering</b>	<input type="checkbox"/>	<input type="checkbox"/>	<input type="checkbox"/>	<input type="checkbox"/>	<input checked="" type="checkbox"/>
302	<b>Alarm system</b> with remote control	<input type="checkbox"/>	<input type="checkbox"/>	<input type="checkbox"/>	<input type="checkbox"/>	<input type="checkbox"/>
320	<b>Model designation deletion</b>	NCO	NCO	NCO	NCO	NCO
322	<b>Comfort Access System</b> , keyless access to the vehicle incl. exterior handle area lighting and automatic tailgate operation	<input type="checkbox"/>	<input type="checkbox"/>	<input type="checkbox"/>	<input checked="" type="checkbox"/>	<input checked="" type="checkbox"/>
403	<b>Glass sunroof</b> , with electric slide and lift control, comfort opening function via car key	<input type="checkbox"/>	<input type="checkbox"/>	<input type="checkbox"/>	<input type="checkbox"/>	<input type="checkbox"/>
415	<b>Roller sunblind for rear window</b>	<input type="checkbox"/>	<input type="checkbox"/>	<input type="checkbox"/>	<input type="checkbox"/>	<input checked="" type="checkbox"/>
417	<b>Roller sunblind for rear side windows</b> , mechanical	<input type="checkbox"/>	<input type="checkbox"/>	<input type="checkbox"/>	<input type="checkbox"/>	<input checked="" type="checkbox"/>
420	<b>Sun protection glazing</b> , darker tinted glass for rear and rear side windows	<input type="checkbox"/>	<input type="checkbox"/>	<input type="checkbox"/>	<input type="checkbox"/>	<input type="checkbox"/>
441	<b>Smoker's package</b>	<input type="checkbox"/>	<input type="checkbox"/>	<input type="checkbox"/>	<input type="checkbox"/>	<input type="checkbox"/>
459	<b>Electric seat adjustment with memory function</b>	<input type="checkbox"/>	<input checked="" type="checkbox"/>	<input checked="" type="checkbox"/>	<input checked="" type="checkbox"/>	<input checked="" type="checkbox"/>
481	<b>Sport Seats for driver and front passenger</b> Included in Sport Line (7AC) and M Sport Package (337)	<input type="checkbox"/>	<input type="checkbox"/>	<input type="checkbox"/>	<input type="checkbox"/>	<input type="checkbox"/>
488	<b>Lumbar support, electric</b> , for driver and front passenger	<input type="checkbox"/>	<input type="checkbox"/>	<input type="checkbox"/>	<input type="checkbox"/>	<input checked="" type="checkbox"/>
494	<b>Seat heating for driver and front passenger</b>	<input type="checkbox"/>	<input type="checkbox"/>	<input type="checkbox"/>	<input type="checkbox"/>	<input checked="" type="checkbox"/>
496	<b>Seat heating for rear seats</b> Only available with Seat heating for driver and front passenger (494) and Dakota leather upholstery (LC**)	<input type="checkbox"/>	<input type="checkbox"/>	<input type="checkbox"/>	<input type="checkbox"/>	<input type="checkbox"/>

■ Standard   □ Optional   NCO No Cost Option

While BMW Group Australia has endeavoured to ensure that all information, representations, illustrations and specifications contained in these materials are accurate at the time of publication (10 February 2015), the information is general in nature only. Product features, specifications, models and prices are subject to change without notice. The general information in these materials should always be read in conjunction with information from authorised BMW dealers. To the extent permitted by law, BMW Group Australia excludes all express and implied warranties or guarantees and all liability, whether direct, indirect, special or consequential, arising from negligence or otherwise relating to the use of these materials, any inaccuracies and for any non-compliance by any vehicle with any representation, illustration, specification, description, product feature, colour, or other information contained in these materials.

# OPTIONAL EQUIPMENT.

		318i	320i	320d	330i	340i
<b>Options</b>						
5A1	<b>LED Fog lights</b> Included in M Sport Package (337)	<input type="checkbox"/>	<input type="checkbox"/>	<input type="checkbox"/>	<input type="checkbox"/>	<input checked="" type="checkbox"/>
502	<b>Headlight Washer System</b> , high-pressure system for cleaning main headlights with automatically extending lifter jet.	<input type="checkbox"/>	<input type="checkbox"/>	<input type="checkbox"/>	<input type="checkbox"/>	<input type="checkbox"/>
6AR	<b>Internet</b> , BMW ConnectedDrive independent, in-vehicle internet access via the pre-fitted vehicle SIM card. When stationary, websites can be called up on the Control Display by entering the URL using the iDrive Touch Controller. 1 year subscription Only in conjunction with either ConnectedDrive Lifestyle (Z1L) or ConnectedDrive Freedom (7S9)	<input type="checkbox"/>	<input type="checkbox"/>	<input type="checkbox"/>	<input type="checkbox"/>	<input checked="" type="checkbox"/>
6NS	<b>Convenience telephony with extended Smartphone connectivity</b> Provision for snap-in adapter (available separately through Genuine BMW Accessories) for charging function and connection to external aerial Includes extended Bluetooth functionality such as pairing of multiple devices and more, depending on the features of the Bluetooth/USB device Check the compatibility of your mobile phone at <a href="http://bmw.com/Bluetooth">bmw.com/Bluetooth</a>	<input type="checkbox"/>	<input type="checkbox"/>	<input type="checkbox"/>	<input type="checkbox"/>	<input checked="" type="checkbox"/>
601	<b>TV function</b> , digital reception (DVB-T) Only available with Navigation System Professional (609)	<input type="checkbox"/>	<input type="checkbox"/>	<input type="checkbox"/>	<input type="checkbox"/>	<input type="checkbox"/>
609	<b>Navigation system Professional</b> , incl. iDrive Touch Controller with added functionality, high-resolution built-in 8.8" colour display, quick-start function, DVD drive, 3D map and arrow display, as well as bird's-eye view, integrated hard disc for navigation including 20GB storage for audio files	<input type="checkbox"/>	<input type="checkbox"/>	<input type="checkbox"/>	<input checked="" type="checkbox"/>	<input checked="" type="checkbox"/>
654	<b>DAB+ digital radio tuner</b> , exceptional sound quality, improved reception and a wide range of special-interest channels	<input type="checkbox"/>	<input checked="" type="checkbox"/>	<input checked="" type="checkbox"/>	<input checked="" type="checkbox"/>	<input checked="" type="checkbox"/>
676	<b>HiFi Loudspeaker system</b> , 9 loudspeakers, 205W analogue amplifier	<input type="checkbox"/>	<input type="checkbox"/>	<input type="checkbox"/>	<input type="checkbox"/>	<input type="checkbox"/>
688	<b>harman/kardon Surround Sound system</b> , 16 high-end loudspeakers, 600W digital amplifier with individually adjustable equaliser, 9 channels and chrome applications	<input type="checkbox"/>	<input type="checkbox"/>	<input type="checkbox"/>	<input type="checkbox"/>	<input checked="" type="checkbox"/>
7S9	<b>ConnectedDrive Freedom</b> <b>Includes Concierge Services:</b> 24/7 assistance via ConnectedDrive call centre at the touch of a button, for assistance with searching for destinations, POIs, and sends these addresses straight to your vehicle. 3 year subscription	<input type="checkbox"/>	<input type="checkbox"/>	<input type="checkbox"/>	<input type="checkbox"/>	<input checked="" type="checkbox"/>
Z9A	<b>6-speed manual transmission</b> Deletes Active Cruise Control (5DF) and adds Cruise Control with Braking Function on 340i	NCO	NCO	NCO	NCO	NCO
	<b>Metallic paintwork</b>	<input type="checkbox"/>	<input type="checkbox"/>	<input type="checkbox"/>	<input type="checkbox"/>	<input type="checkbox"/>

■ Standard □ Optional NCO No Cost Option

While BMW Group Australia has endeavoured to ensure that all information, representations, illustrations and specifications contained in these materials are accurate at the time of publication (10 February 2015), the information is general in nature only. Product features, specifications, models and prices are subject to change without notice. The general information in these materials should always be read in conjunction with information from authorised BMW dealers. To the extent permitted by law, BMW Group Australia excludes all express and implied warranties or guarantees and all liability, whether direct, indirect, special or consequential, arising from negligence or otherwise relating to the use of these materials, any inaccuracies and for any non-compliance by any vehicle with any representation, illustration, specification, description, product feature, colour, or other information contained in these materials.

# BMW INDIVIDUAL.



True exclusivity is defined by the very highest standards: those that each person sets for themselves. BMW Individual enables you to realise these standards in the car you drive. Let yourself be inspired by the BMW Individual range in which all individual details complement each other perfectly.

		320i	320d	330i	340i
<b>BMW Individual Wheels</b>					
2PR	<b>BMW Individual light alloy wheels V-Spoke style 439</b> , front 8 J x 19" with 225/40, rear 8.5 J x 19" with 225/35 run-flat safety tyres Not available with M Sport Package (337)	<input type="checkbox"/>	<input type="checkbox"/>	<input type="checkbox"/>	<input type="checkbox"/>
2T0	<b>BMW Individual light alloy wheels V-spoke style 626i</b> , front 8 J x 19" with 225/40, rear 8.5 J x 19" with 225/35 run-flat safety tyres Not available with M Sport Package (337)	<input type="checkbox"/>	<input type="checkbox"/>	<input type="checkbox"/>	<input type="checkbox"/>
<b>BMW Individual Paintwork</b>					
X02	<b>Citrin Black metallic</b>				
X08	<b>Champagne Quartz metallic</b>	<input type="checkbox"/>	<input type="checkbox"/>	<input type="checkbox"/>	<input type="checkbox"/>
X10	<b>Tanzanite Blue metallic</b>				
X12	<b>Smoked Topaz metallic</b>				
490	<b>Brilliant White metallic</b>				
<b>BMW Individual Interior Trim Finishers</b>					
XE5	<b>Fine-wood trim Sycamore, red brown, dark</b>				
XE7	<b>Piano finish, Black</b>	<input type="checkbox"/>	<input type="checkbox"/>	<input type="checkbox"/>	<input type="checkbox"/>
XEX	<b>Fine-wood trim Ash grain white</b>				

■ Standard □ Optional NCO No Cost Option

While BMW Group Australia has endeavoured to ensure that all information, representations, illustrations and specifications contained in these materials are accurate at the time of publication (10 February 2015), the information is general in nature only. Product features, specifications, models and prices are subject to change without notice. The general information in these materials should always be read in conjunction with information from authorised BMW dealers. To the extent permitted by law, BMW Group Australia excludes all express and implied warranties or guarantees and all liability, whether direct, indirect, special or consequential, arising from negligence or otherwise relating to the use of these materials, any inaccuracies and for any non-compliance by any vehicle with any representation, illustration, specification, description, product feature, colour, or other information contained in these materials.

# BMW INDIVIDUAL.

		320i	320d	330i	340i
<b>BMW Individual Extended Leather Trim 'Merino'</b>					
ZAKS	<b>Cashmere Beige   Black</b>				
ZAP5	<b>Amaro Brown   Black</b>				
ZASW	<b>Black   Black</b>				
ZAWT	<b>Cohiba Brown   Black</b>				
ZAOW	<b>Opal White   Black</b>	<input type="checkbox"/>	<input type="checkbox"/>	<input type="checkbox"/>	<input type="checkbox"/>
Includes BMW Individual leather steering wheel Merino (XL3), except with M Sport Package (337)					
Only available in conjunction with BMW Individual roofliner Anthracite (775) and BMW Individual Door Sills (778), except with M Sport Package (337)					

<b>BMW Individual Options</b>					
4M5	<b>BMW Individual instrument panel finished in Dakota leather</b> Only with Dakota leather (except for LCDF) Only available with HiFi system Professional (676) or harman/kardon (688)	<input type="checkbox"/>	<input type="checkbox"/>	<input type="checkbox"/>	<input checked="" type="checkbox"/>
775	<b>BMW Individual roofliner in Anthracite</b>	<input type="checkbox"/>	<input type="checkbox"/>	<input type="checkbox"/>	<input type="checkbox"/>
778	<b>Door sill finishers with BMW Individual designation</b> Only available with BMW Individual Paintwork or BMW Individual Extended leather trim Not available with M Sport Package (337)	NCO	NCO	NCO	NCO
XL3	<b>BMW Individual leather steering wheel 'Merino'</b> Only available with extended leather trim 'Merino' and Driving Assistant (5AS) or/and Lane Change Warning (5AG) Not available with M Sport Package (337) When ordered in conjunction with Sport Line (7AC), 2XE must be specified	<input type="checkbox"/>	<input type="checkbox"/>	<input type="checkbox"/>	<input type="checkbox"/>
XT1	<b>BMW Individual instrument panel finished in leather</b> <ul style="list-style-type: none"> <li>- Instrument panel top in leather 'Walknappa' in interior world colour with contrast stitching</li> <li>- Door upper-arm trim panels in leather 'Walknappa' in interior world colour</li> <li>- Instrument panel bottom in leather 'Merino' in BMW Individual interior upholstery colour with contrast stitching</li> </ul> Only available with BMW Individual extended leather (ZA**) Only available with HiFi loudspeaker system (676) or harman/kardon Surround Sound system (688)	<input type="checkbox"/>	<input type="checkbox"/>	<input type="checkbox"/>	<input type="checkbox"/>



Experience BMW Individual interactive with the BMW Individual iPad app.

■ Standard □ Optional NCO No Cost Option

While BMW Group Australia has endeavoured to ensure that all information, representations, illustrations and specifications contained in these materials are accurate at the time of publication (10 February 2015), the information is general in nature only. Product features, specifications, models and prices are subject to change without notice. The general information in these materials should always be read in conjunction with information from authorised BMW dealers. To the extent permitted by law, BMW Group Australia excludes all express and implied warranties or guarantees and all liability, whether direct, indirect, special or consequential, arising from negligence or otherwise relating to the use of these materials, any inaccuracies and for any non-compliance by any vehicle with any representation, illustration, specification, description, product feature, colour, or other information contained in these materials.



## GENUINE BMW ACCESSORIES.

Driving a BMW is always a special experience, but it can be made even more so with Genuine BMW Accessories thanks to their combination of unique ideas, supreme functionality and stunning design.

Discover a wide range of innovative solutions, covering areas such as the exterior and interior, communication and information, as well as transportation and luggage compartment solutions.

For more information, please contact your preferred BMW Dealer who will be pleased to advise you on the full range of Genuine BMW Accessories, or visit [bmw.com.au/accessories](http://bmw.com.au/accessories).



**20" BMW M Performance, Double-spoke 624 M, Bicolour light alloy wheels**



**All weather floor mats**



**Backrest bag and storage bag with drinks holder**



**Universal Snap-in adapter**



**BMW M Performance kidney grilles black high gloss**



**Fitted car cover**



**Travel & Comfort Clothes hanger**



**Key Holder – Sports line**





## GENUINE BMW SERVICE.

When you buy a BMW, you can look forward to superb service and comprehensive customer care, with a network of dealerships Australia-wide ready to assist you at any time.

The intelligent BMW Condition Based Servicing (CBS) system monitors the individual components of your vehicle's service requirements and notifies you in advance when a service is due. In conjunction with BMW Teleservices, your vehicle then sends all relevant servicing data captured by CBS directly to your preferred BMW dealer.\* Your BMW dealer will contact you to arrange an appointment at a convenient time and can efficiently prepare for your visit by ordering spare parts in advance.

No one knows the innovative technology in your BMW quite like the authorised BMW dealer network. Using the latest sophisticated BMW diagnostic tools, you can rest assured that your BMW will receive the highest level of attention from specialist BMW-trained technicians using only Genuine BMW Parts.

Your BMW service experience can also extend to a BMW Service Inclusive package, which covers your scheduled servicing costs<sup>^</sup> for 5 years/80,000kms (whichever comes first) in a single, once-off advanced payment. With BMW Service Inclusive, you can enjoy every second of driving pleasure knowing that your BMW is always getting the service it deserves. BMW Service Inclusive is also fully transferable to future owners and includes a two year manufacturer's warranty on all parts replaced.

All in all, quality and safety are the essence of a Genuine BMW Service. Find out more at [bmw.com.au/service](http://bmw.com.au/service)



### BMW ROADSIDE ASSISTANCE & ACCIDENT MANAGEMENT.

To ensure your BMW delivers you with years of uninterrupted driving pleasure, it comes with the one of the most comprehensive roadside care programmes in Australia. This service is complimentary for three years, so you can rest assured in the knowledge that assistance is at hand 24 hours a day, 365 days a year.

Should you require assistance, simply dial BMW Roadside Assistance & Accident Management on the exclusive toll-free number: **1800 808 111**.

\*Preferred Authorised BMW dealer must be registered and configured in the BMW ConnectedDrive portal. <sup>^</sup>Normal wear and tear and other exclusions apply.





# BMW FINANCIAL SERVICES.

## Finance, Lease & Insurance.

BMW Group Financial Services is your one stop shop for all your Finance, Leasing and Insurance needs. Each BMW dealership has a dedicated Business Manager who can put together a tailored finance and insurance package, to make getting into your next BMW even easier.

### FINANCE & LEASE.

BMW Group Financial Services offers both loan and lease options to suit your requirements. Whether it is for a company vehicle or a car for your personal use, there are a range of products available to meet your needs.

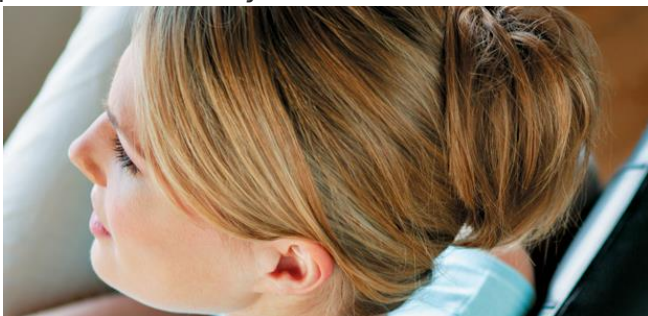
BMW Financial Services offers competitive rates, flexible terms, and no early termination or monthly account keeping fees\*.

As a BMW Financial Services Customer you also have access to the My BMW Account service which provides you with all your finance contract information 24 hours a day, 7 days a week. Simply log on at [myBMWaccount.com.au](http://myBMWaccount.com.au)



### INSURANCE.

BMW Insurance has you covered with an outstanding range of products to protect both your BMW and your BMW finance contract. With BMW Insurance you can not only ensure your BMW stays a BMW, but also enjoy peace of mind while you are on the road and off.



Our range of insurance products includes:

- BMW Motor Vehicle Insurance
- BMW Tyre & Rim Insurance
- BMW Extended Warranty Insurance
- BMW Loan Protection Insurance
- BMW Motor Equity Insurance
- BMW Leaseprotect Insurance
- BMW Purchase Price Insurance

Speak to your Business Manager today about our extensive range of Finance and Insurance products.

This insurance is issued by Allianz Australia Insurance Limited AFSL 234708 ABN 15 000 122 850. Please visit [bmwfinance.com.au](http://bmwfinance.com.au) and read a Products Disclosure statement to decide if these products are right for you.

\*BMW Financial Services is a division of BMW Australia Finance Limited. Australian credit licence 392387. Fees, charges, terms, conditions and approval criteria apply to BMW Financial Services finance products.



## BMW DRIVING EXPERIENCE.

If you've ever wondered why a BMW is the Ultimate Driving Machine, a BMW Driving Experience course is for you. If you've ever wondered what an Ultimate Driving Machine is capable of, this is the Ultimate test-drive.

Sign up for a BMW Driving Experience course and you will learn what these remarkable vehicles can really do. More importantly, you will also acquire essential skills that will enhance your driving ability and safety.

BMW Driving Experience was introduced in 1977, the first of its kind initiated by an automotive manufacturer to improve the skills, reactions and awareness of drivers.

Today more than ever, the 3-stage programme offers drivers a positive, exhilarating experience, along with an excellent education and an enthralling opportunity to accelerate their driving abilities. This is all conducted behind the wheel of an efficient and dynamic range of Ultimate Driving Machines.

The aim of the programme is to enhance each participant's driving ability by developing attitudes and skills through a structured sequence of courses. Each course takes participants through an increasingly challenging mix of low and high speed driving exercises, that help them respond effectively in emergency situations and become progressively more confident, safe and enthusiastic drivers.

Our courses are conducted at Australia's leading facilities, including the world renowned Phillip Island Grand Prix Circuit. All BMW Driving Experience courses are supervised by highly-trained instructors under the stewardship of Le Mans and Bathurst winner, Geoff Brabham.

BMW Driving Experience offers a range of courses, from the entry-level Intensive course, to the more advanced and exhilarating M Dynamic. The final BMW Driving Experience course on offer is the pinnacle of all, our exclusive Fascination course.

### BMW Intensive Driving Experience

An exciting introduction into performance driving, designed for confident drivers.

### BMW M Dynamic Driving Experience

After completing our Intensive Training course, drivers can take their skills to another level with this high-performance course designed to test their ability to the fullest.

### BMW Fascination Driving Experience

The last course offered in the BMW Driving Experience Programme. Fascination is the goal to reach for those who complete our Intensive and M Dynamic Driving Experience courses. Drivers apply all of the skills they have learned in previous courses, and have one-to-two tuition with our highly trained BMW Driving Experience Instructors.

To find out more about BMW Driving Experience courses and dates, please call **1800 000 269** or email **[bmw-drivingexperience@bmw.com.au](mailto:bmw-drivingexperience@bmw.com.au)** or visit **[bmw-drivingexperience.com.au](http://bmw-drivingexperience.com.au)**

\*Preferred Authorised BMW dealer must be registered and configured in the BMW ConnectedDrive portal. †Normal wear and tear and other exclusions apply.

**BMW 3 Series  
Sedan**



**The Ultimate  
Driving Machine**

[bmw.com.au](http://bmw.com.au)

While BMW Group Australia has endeavoured to ensure that all information, representations, illustrations and specifications contained in these materials are accurate at the time of publication (10 February 2016), the information is general in nature only. Product features, specifications, models and prices are subject to change without notice. The general information in these materials should always be read in conjunction with information from authorised BMW dealers. To the extent permitted by law, BMW Group Australia excludes all express and implied warranties or guarantees and all liability, whether direct, indirect, special or consequential, arising from negligence or otherwise relating to the use of these materials, any inaccuracies and for any non-compliance by any vehicle with any representation, illustration, specification, description, product feature, colour, or other information contained in these materials.