



This Service Information bulletin supersedes SI B13 09 10 dated August 2010.
PERFORM THE PROCEDURE OUTLINED IN THIS SERVICE INFORMATION ON ALL AFFECTED VEHICLES THE NEXT TIME THEY ARE IN THE SHOP.

NEW designates changes to this revision

SUBJECT

NEW Voluntary Emissions Recall Campaign 10E-A02: N54 High-Pressure Fuel Pump; Program Control Units

MODEL

NEW E60, E61, E71, E82, E88, E90, E92, E93 with the N54 engine produced from 03/28/2006 to 02/26/2010

SITUATION

The customer may complain of extended engine cranking time before the start. Also, fault code 2FBF (Fuel pressure on – release injection, pressure too low) may be stored in the DME.

CORRECTION

The new DME calibration improves the engine starting strategy and the robustness of the HDP high-pressure fuel pump.

NEW AFFECTED VEHICLES

This Recall Campaign involves E60, E61, E71, E82, E88, E90, E92, and E93 vehicles with the N54 engine which were produced from 03/28/2006 to 02/26/2010.

In order to determine whether a specific vehicle has had this Emissions Recall Campaign completed or is affected by this Recall Campaign, first check whether the Recall Completion Label, SD 92-406, is attached to the right (passenger) rear side of the hood in the engine compartment, close to the windshield. If the label is found, the Campaign has already been performed. If the Recall Completion Label is not present, it will be necessary to utilize the "Service Menu" of DCSnet (Dealer Communication System) or the Key Reader. Based on the response of the system, either proceed with the corrective action or take no further action.

PROCEDURE

Program/recode the vehicle using the current ISTA/P version (2.40.0 or later). The target integration levels should be:

E8x/E9x – Integration level (new): E89X-10-12-501 or higher

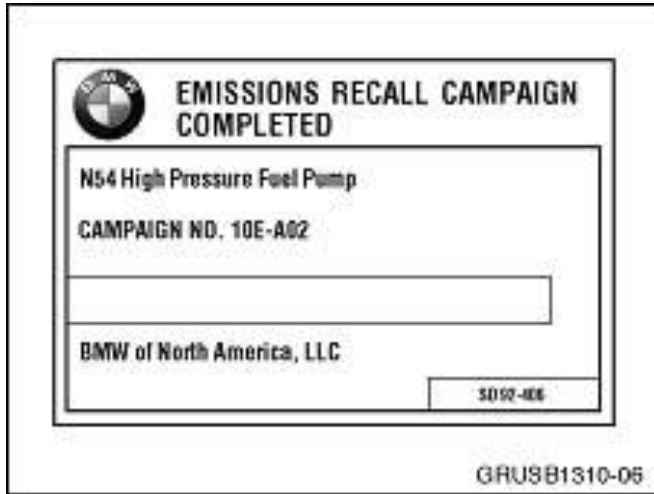
E71 – Integration level (new): E070-10-12-501 or higher

E6x – Integration level (new): E060-10-12-500 or higher

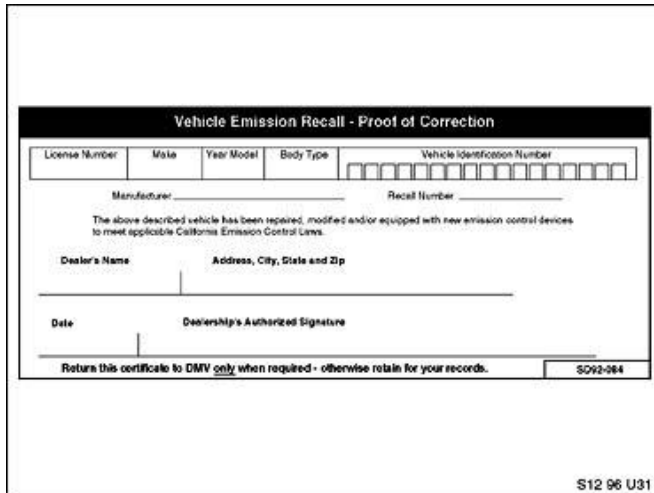
Note that ISTA/P will automatically reprogram and code all programmable control modules that do not have the latest software.

For information on programming and coding with ISTA/P, refer to Centernet / Aftersales Portal / Service / Workshop Technology / Vehicle Programming.

NEW LABEL INSTRUCTIONS



After the vehicle has been checked and corrected, obtain a label (SD 92-406) and with a ball point pen, print your dealer code (5 digits) on the Recall Completion Label (see illustration). An initial quantity of 200 labels will be sent to all BMW centers. Peel the label from its backing and affix it to the right (passenger) rear side of the hood in the engine compartment, close to windshield.



For California centers only: It is required by the California Code of Regulations that an executed orange "Vehicle Emission Recall - Proof of Correction" certificate (SD92-084, see illustration) be provided to each customer (for vehicles registered in the state of California), once the Recall on his or her vehicle has been completed.

Note: Additional labels can be ordered online at BMW TIS.

NEW WARRANTY INFORMATION

The repair described in this bulletin is covered under warranty regardless of time or mileage.

Reimbursement for this Recall will be via normal claim entry utilizing the following information:

Defect Code: **00 12 07 03 00**

Labor Operation:	Labor Allowance:	Description:
00 59 827	1 FRU	Check the I-level; no programming needed
00 59 068	9 FRU	Program the control units
00 59 069	11 FRU	Program control units (including programming CAS)

In cases where ISTA requires the replacement of control modules or additional programming because certain control modules failed to program correctly, or just an initialization is required, print out the Measures Plan and/or Final Report and attach these reports to the RO in the vehicle file. This additional work should be claimed under the defect code listed in this bulletin, using the labor operation and labor allowance from the KSD2.

ATTACHMENTS

view PDF attachment [B130910 Customer Letter](#).