

 Connection offline

## Technical product information

<b>Topic</b>	Continental Series - W12 Engine - Bank 2 Deflection pulley noisy
<b>Market area</b>	Russische Föderation (5RU), Russian Federation 935 Volkswagen Group RUS (6935), United Kingdom E01 Bentley UK (6E01), Germany E02 Bentley rest Europe (6E02), Japan E03 Bentley Japan (6E03), Australia E04 Bentley rest Asia and Australia (6E04), United States E05 Bentley USA and rest America (6E05), United Arab Emirates E06 Bentley Middle East and Africa (6E06)
<b>Brand</b>	Bentley
<b>Transaction No.</b>	2032874/1
<b>Level</b>	EH
<b>Status</b>	Released for publishing
<b>Release date</b>	16-Apr-2013

### New customer code

Object of complaint	Complaint type	Position
Engine -> Gear drive, chain drive, belt drives -> Belt drive idler pulley	Noise, vibration -> noise	
Engine -> Gear drive, chain drive, belt drives -> Belt drive idler pulley	Noise, vibration -> whine	
Engine -> Gear drive, chain drive, belt drives -> Belt drive idler pulley	Noise, vibration -> whistle	
Engine -> Gear drive, chain drive, belt drives -> Belt drive idler pulley	Noise, vibration -> squeak	
Engine -> Gear drive, chain drive, belt drives -> Belt drive idler pulley	Noise, vibration -> clank	

### New workshop code

Object of complaint	Complaint type	Position
Engine -> Gear drive, chain drive, belt drives -> Belt drive idler pulley	Noise, vibration -> noise	
Engine -> Gear drive, chain drive, belt drives -> Belt drive idler pulley	Noise, vibration -> whine	
Engine -> Gear drive, chain drive, belt drives -> Belt drive idler pulley	Noise, vibration -> whistle	
Engine -> Gear drive, chain drive, belt drives -> Belt drive idler pulley	Noise, vibration -> squeak	
Engine -> Gear drive, chain drive, belt drives -> Belt drive idler pulley	Noise, vibration -> clank	

## Vehicle data

### Continental Series

#### Sales types

Type	MY	Brand	Designation	Engine code	Gearbox code	Final drive code
3931*	2012	E		*	*	*
3931*	2013	E		*	*	*
3941*	2012	E		*	*	*
3941*	2013	E		*	*	*
3W*	2004	E		*	*	*
3W*	2005	E		*	*	*
3W*	2006	E		*	*	*
3W*	2007	E		*	*	*
3W*	2008	E		*	*	*
3W*	2009	E		*	*	*
3W*	2010	E		*	*	*
3W*	2011	E		*	*	*
3W*	2012	E		*	*	*
3W*	2013	E		*	*	*

**Chassis numbers**

Manufacturer	Filler	Type	Filler	MY	Factory	From	To	Prod from	Prod to
SCB	*	*	*	*	*				

**Documents**

Document name
master.xml

⚠ Connection offline

Technical product information

Transaction No.: 2032874/1

Continental Series - W12 Engine - Bank 2 Deflection pulley noisy

Release date: 16-Apr-2013

### Customer statement / workshop findings

In the event that the Bank 2 accessory drive belt deflection pulley (Figure 1) is diagnosed as unserviceable/noisy leading to the pulley requiring replacement, please commence with this TPI.

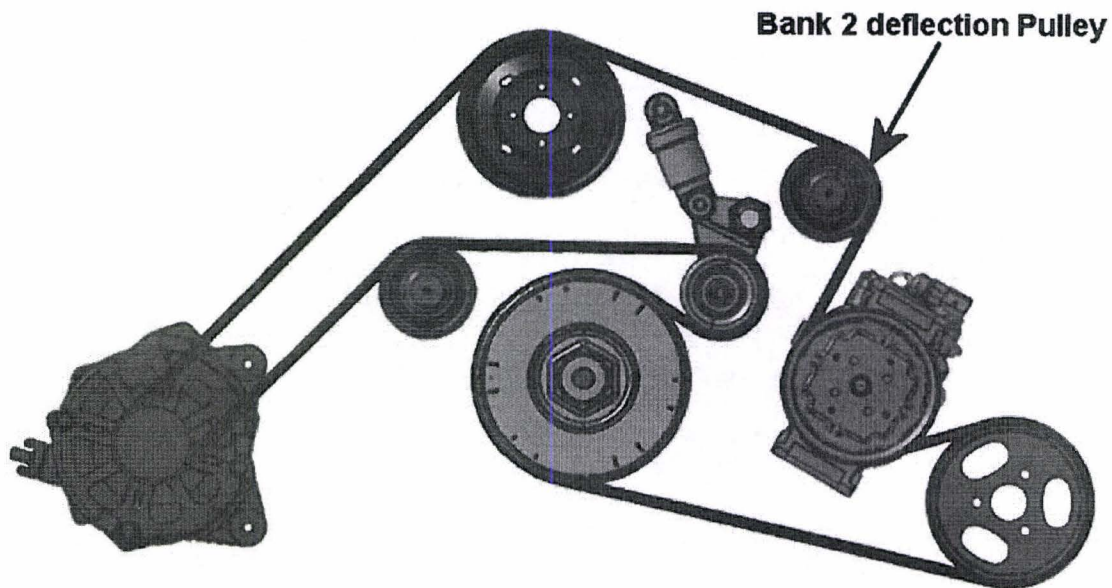


Figure 1

### Technical background

A new specification Bank 2 deflection pulley is now available, there are a number of significant changes which have been introduced, they are as follows:

- The original pulley operated using a single row ball bearing
- The original specification single row pulley can be identified as it has a grooved belt running surface (Figure 2 point A) and also a shallow cone shaped dust cap (Figure 2 point B)
- The original pulley is secured with a Torx bolt as shown in Figure 3



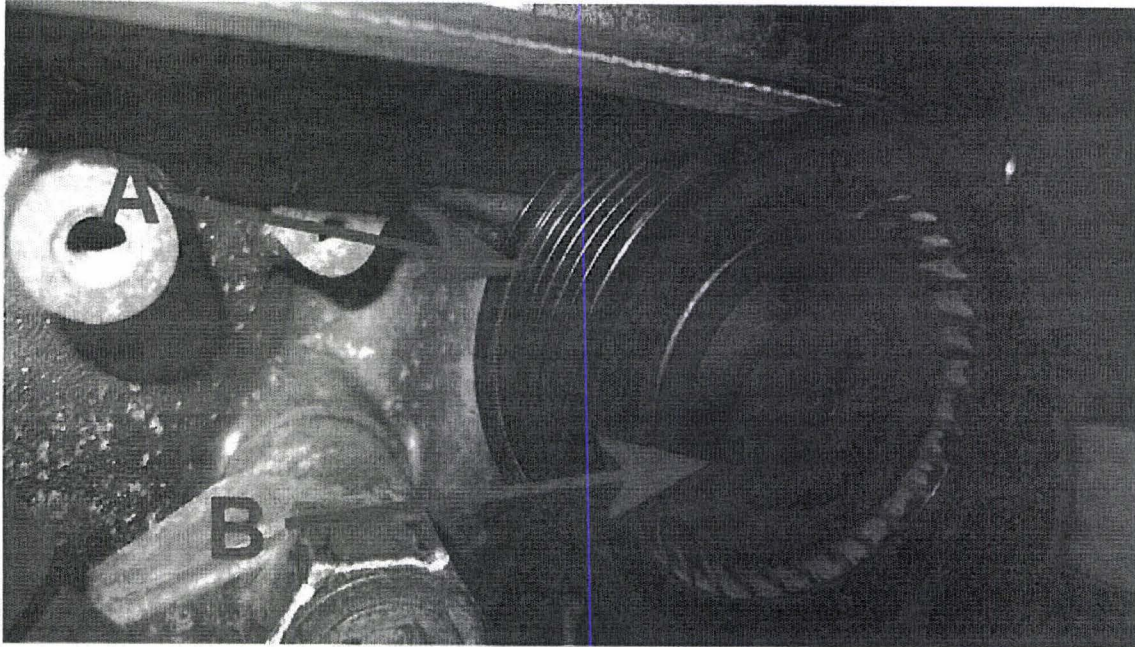


Figure 2

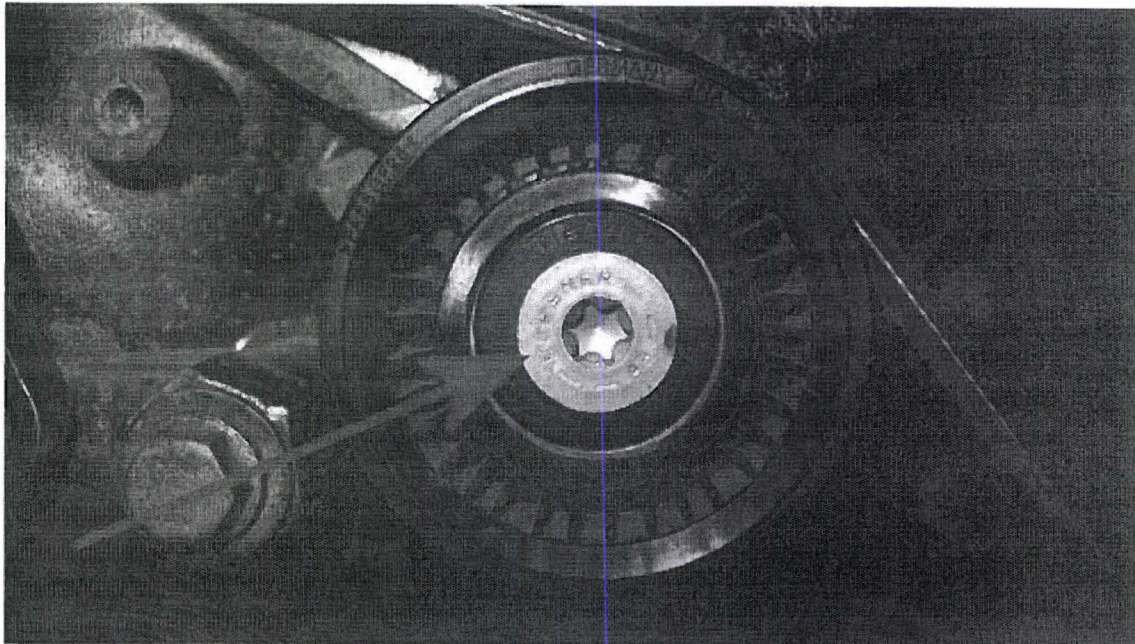


Figure 3

- The latest specification part now operates using a double row ball bearing
- The pulley can be identified as is has a smooth belt running surface (Figure 4 point A) and a deep cone shaped dust cap (Figure 4 point B)



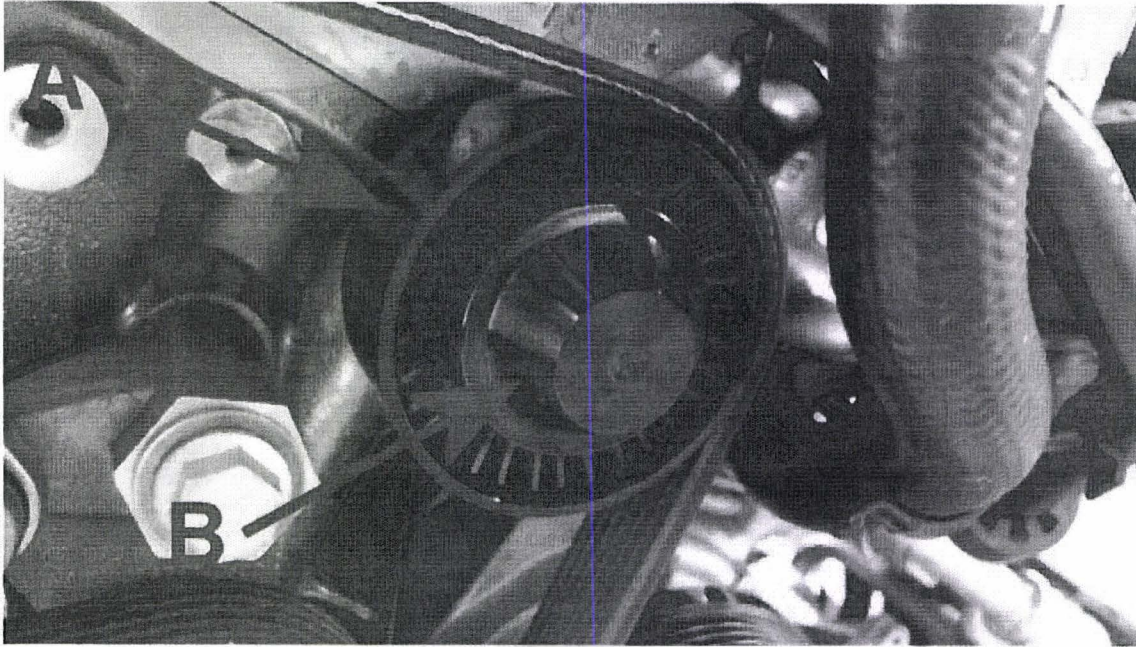


Figure 4

-The new specification pulley is now supplied and secured with a 16mm Hexagon headed bolt (Figure 5) Do not under any circumstances use any other fixing other than the new 16 mm Hexagon headed bolt supplied with the latest specification pulley

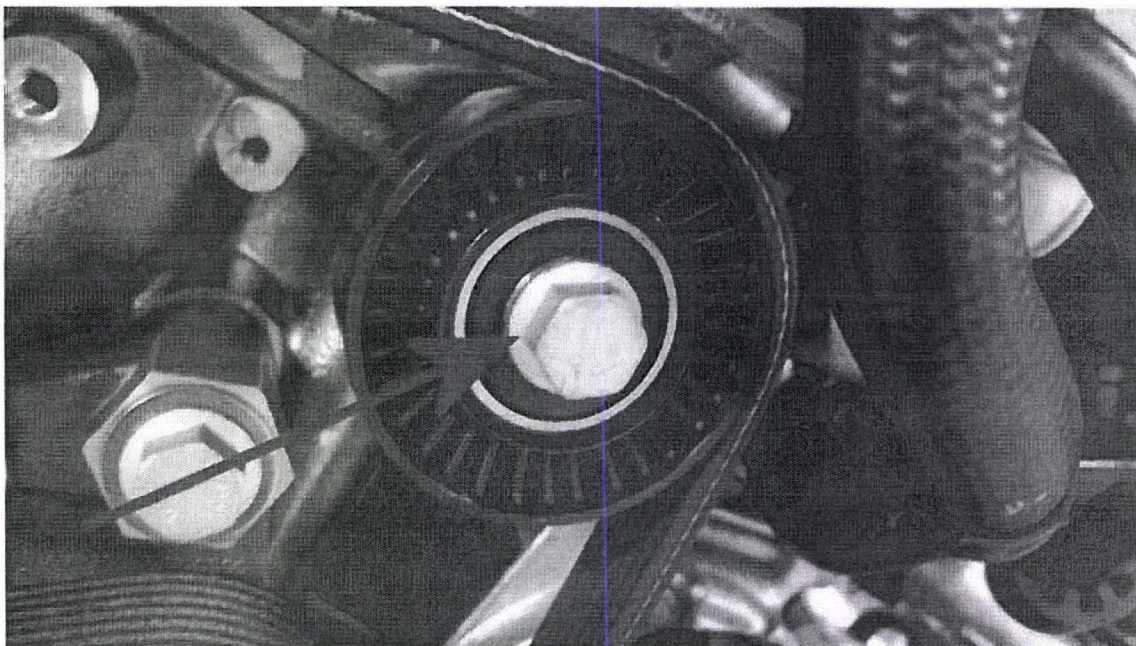


Figure 5

Do Not ever attempt to fit the latest specification pulley with the part number 07C 145 276F to Bank 1, this pulley must only ever be fitted to Bank 2

**ATTENTION:** During this TPI the Workshop Manual is quoted to help in carrying out various tasks, it is recommended that the procedures referenced are checked by the operative as the process within the Workshop Manual may have changed since last viewed.



### Production change

From VIN SCBFK63W9DC [REDACTED] the latest specification deflection pulley is fitted at the time of production

### Measure

Replace the Bank 2 accessory drive belt deflection pulley - Refer to Workshop Manual Rep.Gr 13 - Accessory Drive Belt Deflection Pulley - Bank 2 - To Replace **NOTE:** The torque for the latest specification deflection pulley fixing (Figure 6) is 40 Nm + 90 degrees and refit the dust cap

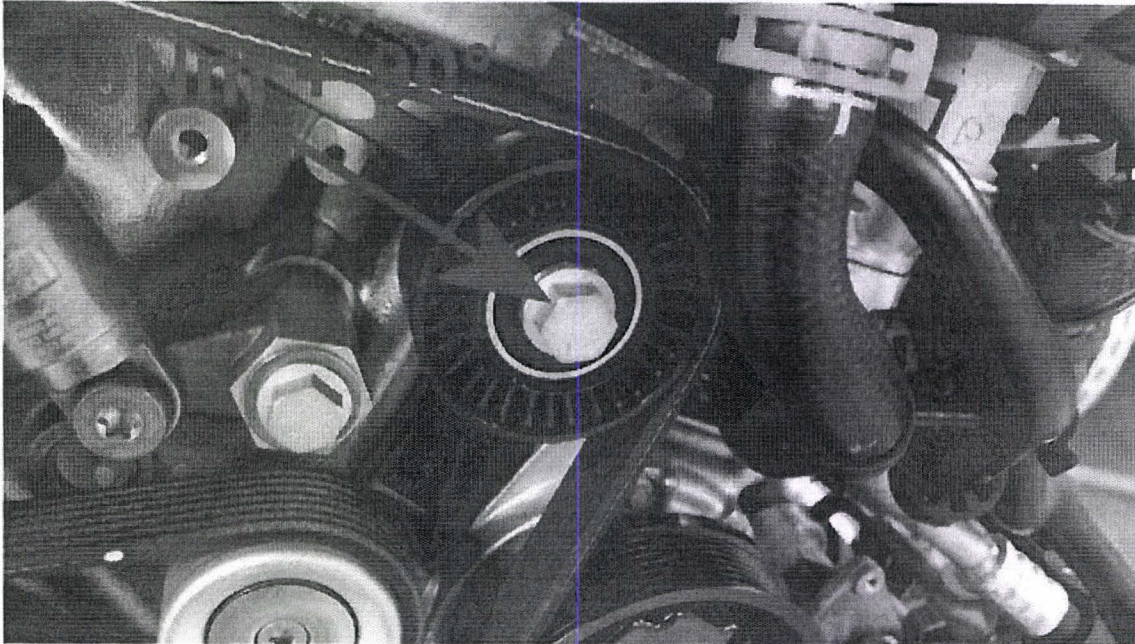


Figure 6

### Warranty accounting instructions

**Please Note: Normal Warranty policies are applicable.**

#### Time to replace the Bank 2 deflection pulley – Continental Series

Warranty Type	910 or 110
Labour operation code	13 77 19 15
Damage Service Number	13 77
Damage code	00 10
Time	170 Time units

#### Time to replace the Bank 2 deflection pulley – New Continental GT and GTC

Warranty Type	910 or 110
Labour operation code	13 77 19 00
Damage Service Number	13 77
Damage code	00 10



Time

210 Time units

**Parts information**

Part Number	Description	Quantity
07C 145 276F	Bank 2 Deflection pulley	1
JNV 862 564	Coolant	As required*

**\*NOTE:** The coolant is dispatched from Bentley Motors in a box which consists of 4 x 5 litres containers, please be aware that one box of coolant will suffice for use on up to three cars, please only order what you require.