

CHRYSLER



## 2008MY Chrysler 300C / 300C Touring



### Whats New in 2008

- 300C now features a rear deck lid with a SRT inspired integrated spoiler with high-mounted stop light
- New Colors Clearwater Blue Pearl and Modern Blue Pearl
- 300C now has supplemental front seat mounted side air bags
- Adaptive cruise control on SRT
- New soft touch surfaces on arm rests, door panels and center console
- New Alloy Wheels
- New rear tail lights
- Redesigned side protector moulds
- SRT chrome grill replaces black
- New instrument cluster
- Roof mounted antenna

## SUVPS Highlights



### SAFETY/SECURITY

- Electronic Stability Program\* (ABS, electronic throttle control, all-speed traction control and Yaw-Control sensor/Steering Control sensor)
- In addition to Next Generation multistage air bags† & front and rear supplemental side-curtain air bags, 300C now has supplemental front seat mounted side air bags.
- Rear Park Assist System‡
- Tyre Pressure Monitoring System (TPM)
- Brake Assist
- High-performance 4-wheel disc ABS with Brembo 4-piston calipers and ventilated front and rear rotors (SRT8 models)



### UTILITY

- Flexible cargo capacity
  - Smart space with large interior volume, 60/40 split-folding rear seat and large cargo area
  - Unique access liftgate, rear cargo area with tri-fold floor and under-floor storage with cargo organiser - standard on all Touring models except SRT8
- Maximum towing capacity of 2000 kg with the 3.0L CRD V6 engine (Sedan)
- Electronic Vehicle Information Centre (EVIC)



### VALUE

- Dual Zone Automatic Temperature Control
- Drivers 5-feature memory system
- Rain-sensing wipers with headlamp washers
- An exterior and interior refresh refines the 300C's design
- Sound systems
  - MyGIG™ Multimedia Entertainment System with 20GB HDD featuring AM/FM receiver with MP3 input, CD/DVD player and integrated 6.5" touch-screen display and U-connect hands free standard on 300C and 300C Touring.
  - Also available on the 300C and 300C Touring is the MyGIG™ Multimedia Infotainment System with Navigation (standard on SRT8).
  - Boston Acoustics® seven-speaker system plus subwoofer and eight-channel, 368-watt Digital Signal Processing amplifier-system
- World-class NVH levels



### PERFORMANCE

- 4 powerful engines to choose from: 3.5L V6, 3.0L CRD V6, 5.7L HEMI V8 & 6.1L HEMI V8 SRT
- Adaptive cruise control standard on SRT8
- 5-speed automatic transmission features AutoStick®
- Outstanding driving experience
  - Provided by a near 50/50 weight distribution, rear-wheel drive, ESP and five-link independent rear suspension
- SRT8 0-100 km/h times in the low 5 seconds



### STYLE

- Bold road presence: stately grille design, high beltline and dramatic proportion of side glass
- New Colors Clearwater Blue Pearl and Modern Blue Pearl
- The 300C now feature a rear deck lid with a SRT inspired integrated spoiler with high-mounted stop light
- Chrome exterior mirrors and door handles
- Large 18-inch wheels and tyres on 300C and 300C Touring, 20-inch on SRT8
- California Walnut 5.7L V8 or Tortoise Shell-style 3.5L V6 & 3.0L CRD trim on steering wheel, shift knob and door pull handles
- new soft touch surfaces and arm rests, door panels and center console
- "HEMI Orange" engine block treatment on 6.1L SRT HEMI V8

\* No system, no matter how sophisticated, can repeal the laws of physics or overcome careless driving actions. Performance is limited by available traction, which snow, ice and other conditions can affect. When the ESP warning lamp in the speedometer flashes, the driver needs to use less throttle and adapt speed and driving behavior to prevailing road conditions. Always drive carefully, consistent with conditions. Please always wear your seat belt.

† Detects most obstacles/objects. As with all electronically controlled systems, care is advised.

# Technical Specifications\*

	300C Sedan	300C Touring	300C SRT8
Wheelbase	3050		
Overall length	5015		
Overall width	1880		
Overall height	1475	1475	1462
Track (F/R)	1600/ 1605		
Turning diameter m	11.9		
Seating capacity	5		
Head room (F/R)	942/ 966		
Leg room (F/R)	1024/1020		
Shoulder room (F/R)	1510/ 1466		
Hip room (F/R)	1402/1421		
Cargo capacity L	442	772 maximum rear seat up or 1602 maximum with rear seat folded	442

P = Available within package noted. O = Optional.

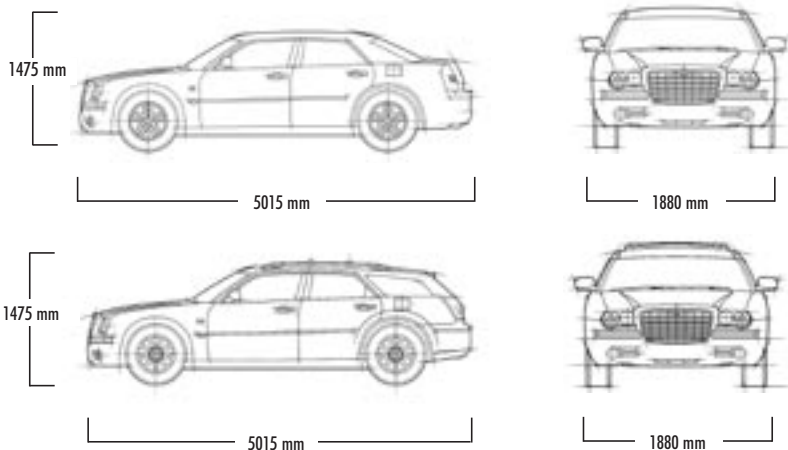
	Available Engines: 300C/300C Touring/300C SRT8/Touring			
	3.0L CRD V6	3.5L V6	5.7L HEMI V8 w/MDS	6.1L SRT Hemi V8
Power kW @ rpm	160 @ 4000	183 @ 6400	250 @ 5000	317 @ 6000
Torque Nm @ rpm	510 @1600-2800	340 @ 3800	525 @ 4000	569 @ 4600
Kerb weight kg — Sedan — Touring	1835 1870	1740 1785	1835 1880	1920 1960
<i>(Kerb weight is the vehicle with full quantities of fuel and lubricants)</i>				
Standard transmission	5 speed auto w/AutoStick	5-speed auto w/AutoStick	5-speed auto w/AutoStick	5 speed auto w/AutoStick
Maximum towing capacity kg — Sedan — Touring	2000 1650	1725 1650	1725 1650	1725 1650
Fuel tank capacity L	72	68	72	72

All measurements are in millimeters (inches) unless otherwise noted.

\* Data contained within this guide was based on the most current information available at the time of production.

Source: DCX International Product Planning and iForum.

• Refer owner's manual for tongue weights.



## Engines

Powertains Fuel Consumption (L/100 km)	300C/300C Touring			
	3.0L CRD V6	3.5L V6	5.7L HEMI V8	6.1L V8
Combined cycle (ADR 81/01)	8.1/8.3	10.9/11.1	11.9/12.3	14.0
Urban cycle (EU standard)	10.8 / 10.9	15.5/15.6	17.8/18.3	21.0
Ex-urban cycle (EU standard)	6.6 / 6.8	8.2/8.5	8.4/8.9	9.9
Combined CO <sub>2</sub> (g/km)	215/260	260/265	283/294	330/335
Performance Top Speed	230Kph	219Kph	250Kph	265Kph
Acceleration (0-100 km/h; sec.)	8.7 / 8.6	9.6/9.5	6.8/7.2	Low 5.0
Drag Coefficient	0.32	0.32	0.32	0.36

All performance features are manufacturer estimates.

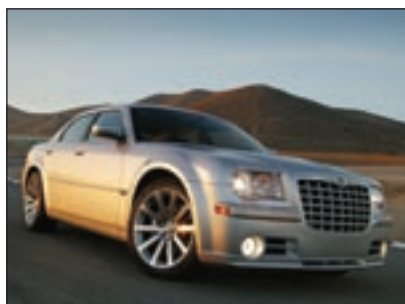
Powertains Engine Specification	300C/300C Touring			
	3.0L CRD V6, DOHC 24 valves	3.5L V6 SOHC 24 valves	5.7L HEMI V8 OHV 16 valves	6.1L HEMI V8 OHV 16 valves
Bore and Stroke	83.0 x 92.0mm	96.0 x 81.0mm	99.5 x 90.9mm	103.0 x 90.9mm
Bosch CR4	Direct injection			
Sequential Multiport		Fuel injection	Fuel injection	Fuel injection
Engine capacity	2987cc	3518cc	5654cc	6063cc
Compression ratio	18.0:1	10.0:1	9.6:1	10.3:1
Max Engine Speed	4500rpm	6800rpm	5800rpm	6200rpm

All performance features are manufacturer estimates.

Transmission Ratio	3.0L CRD V6, 3.5L V6, 5.7L HEMI V8	6.1L V8, SRT8
1st gear	3.58:1	3.59:1
2nd gear	2.19:1	2.19:1
3rd gear	1.41:1	1.41:1
4th gear	1.00:1	1.00:1
5th gear	0.83:1	0.83:1
Reverse gear ratio	3.17:1	3.16:1
Final drive	2.82:1	3.06:1

Colour Availability	INTERIOR COLOURS	
	300C / 300C TOURING	300C SRT
EXTERIOR COLOURS	Dark Slate Grey Leather	Dark Slate Grey Leather
Black	X	
Bright Silver Metallic	X	X
Brilliant Black Crystal Pearl	X	X
Clearwater Blue Pearl	X	
Light Greystone Pearl	X	
Mineral Grey Metallic	X	
Modern Blue Pearl	X	X
Steel Blue Metallic	X	X
Stone White	X	

## Features



300C/300C Touring/300C SRT8/Touring				
	3.0L CRD V6	3.5L V6	5.7L V8	6.1L V8
<b>Service and Warranty</b>				
<i>Oil Change and Service Intervals</i>				
— Schedule A (km)	20,000		12,000	
— Schedule B (km)	10,000		5,000	
<i>Warranty Duration refer owners manual</i>	3-year 100,000-km Chrysler Care 24 Hour Roadside			
<b>Wheels &amp; Tyres</b>		<b>300C/300C Touring</b>		<b>300C SRT8</b>
Wheel Type, Material		Polished aluminium 18"		Forged aluminium 20"
Tyres — Front/Rear		P225/60R18		P245/45ZR20/P255/452R
Spare tyre		Compact spare		(Service Kit replaces compact spare on SRT8)
<b>Steering — All Models</b>				
Type		Rack-and-pinion with hydraulic power assist		
Overall ratio		16.1:1		
Gearing		2.75 turns lock-to-lock		
Turning diameter		11.9 m		
<b>Brakes — All Models</b>				
Discs — Front mm		345x22 ventilated		360x32 ventilated calipers
— Rear		320x22 ventilated		350x28 ventilated calipers
Calipers — Front/Rear mm		42 diameter dual-piston sliding calipers		4 piston sliding calipers by Brembo
<b>Capacities (kg)</b>				
Oil (L)		8.5	5.7	6.6
Engine coolant (L)		12.5	9.75	13.25

All performance features are manufacturer estimates.



## Standard Features

<b>Air Bags*</b>	— Next Generation multistage driver and front-passenger
<b>Air Conditioning</b>	— Dual Zone Automatic Temperature Control with infrared sensing of driver and passenger body temperatures and sun temperature
<b>Air Filter</b>	— Particulate air filter
<b>Battery-Saver Feature</b>	— Turns headlamps off after ignition is turned off and shuts off both switched and automatic interior lights. Also features enhanced programmable functions through EVIC
<b>Brakes</b>	— Power performance 4-wheel disc anti-lock
<b>Brake-Park Interlock</b>	— Prevents an automatic transmission from being shifted out of Park unless brake pedal is applied
<b>Cargo Net</b>	— Sedan
<b>Cargo Compartment Cover</b>	— Cargo compartment cover, rear cargo organiser, Touring (except SRT8)
<b>Child-Protection Rear Door Locks</b>	
<b>Child Seat Anchor System (LATCH)</b>	— Lower child seat anchors and upper tether anchors help ease the installation of 3 aftermarket child seats
<b>Climate Control Outlets</b>	— front and rear (located in the rear of centre console)
<b>Console</b>	— Floor; includes cup holders, coin holder, cassette and CD storage, and rear-seat heat and A/C outlets
<b>Cruise Control</b>	— Electronic with steering column stalk-mounted controls (300C & 300C Touring) — Adaptive Cruise Control (6.1L SRT 8)
<b>Cup Holders</b>	— Front (2) and rear (2)
<b>Defroster</b>	— Electric rear window, front side-window demisters
<b>Door Handles</b>	— Bright (body colour on SRT8 models)
<b>Door Locks</b>	— Power, includes programmable speed-sensitive auto-lock feature
<b>Dynamic Side-Impact Intrusion Protection</b>	— Patented design includes steel side-guard door beams and structural body reinforcements
<b>Electronic Stability Program (ESP)</b>	— Includes all-speed traction control and Brake Assist, less intrusive on SRT8
<b>Electronic Vehicle Information Centre (EVIC)</b>	— In-cluster reconfigurable driver-interactive information display
<b>Exhaust System</b>	— Stainless steel — Single 3.5L V6 — Dual with chrome tips (included with HEMI V8's and 3.0L CRD V6)
<b>Floor Mats x 4</b>	
<b>Fuel Tank</b>	— 68 Litre - 3.5L V6 — 72 Litre - 3.0L CRD / 5.7L HEMI / 6.1L SRT8
<b>Lighting</b>	— Illuminated Front Cup Holders — Dual front map, front door courtesy, glove box and trunk lamps, and rear reading lamps above each door — Side repeaters — Xenon High Intensity Discharge (HID) with headlamp washers and automatic levelling — Fog lamps (front and rear)
<b>Luxury Leather-Trimmed Seats with Heated Front Seats</b>	
<b>Memory System</b>	— Driver's seat, radio presets, exterior mirrors — for 2 drivers
<b>Mirrors</b>	— Auto-dimming rearview — Illuminated visor vanity — Chrome-accented power heated foldaway with memory, driver's auto-dimming and auto-adjust in reverse (body colour on SRT8 models)

## Standard Features

<b>Rear Park Assist</b>	— Ultrasonic
<b>Remote Keyless/Illuminated Entry</b>	— Control for power door locks, boot lid release, includes 2 transmitters and memory system
<b>Roof Racks</b>	— Standard on touring 3.0L, 3.5L & 5.7L (late availability)
<b>Seat Belt Cluster Lamp</b>	— Remains on after engine start until driver buckles up
<b>Seat Belts</b>	— Height-adjustable 3-point driver and front-passenger with travelling buckles; 3-point lap/shoulder belts at all rear-seat positions
<b>Seats</b>	— Front buckets; rear contoured 60/40 split-folding bench with armrest and cup holders — Power 8-way driver's with manual adjustable lumbar support — Power 8-way front-passenger with manual adjustable lumbar support
<b>Security Alarm</b>	— monitors doors, ignition and interior
<b>Sentry Key®</b>	— Anti-theft Engine Immobiliser
<b>Shift Knob</b>	— Tortoise shell-style (3.5L V6 & 3.0L CRD) — California Walnut wood-style (5.7L HEMI V8) — Leather wrapped (6.1L SRT8)
<b>Smoker's Group</b>	— Includes front and rear ashtray and cigar lighter
<b>Sound Systems</b>	— MyGIG™ Multimedia Entertainment System with U-Connect Hands free & Boston Acoustics 7-speaker plus subwoofer featuring a 368-watt digital amplifier (300C & 300C Touring) — MyGIG™ Multimedia Infotainment System with Navigation and U-Connect Hands free & 13 high performance Kickers speakers with subwoofer featuring a 322 watt Kicker amplifier and 100 watt subwoofer Kicker amplifier (SRT Sedan, 11 Speakers on SRT Touring)
<b>Spare Tyre</b>	— Compact (service kit replaces compact spare on SRT8 models)
<b>Speedometer</b>	— Electroluminescent 260-km/h primary (3.5L V6, 3.0L CRD & 5.7L Hemi) — Electroluminescent 300-km/h primary (6.1L SRT8)
<b>Steering Column</b>	— Tilt
<b>Steering Wheel</b>	— Tortoise shell-style trim/leather-wrapped (3.5L V6 / 3.0L CRD V6) — California Walnut wood trim/leather-wrapped (5.7L HEMI V8) — Leather wrapped steering wheel (6.1L SRT8)
<b>Suspension</b>	— Short-/long-arm front with lateral links, tension struts and stabiliser bar; independent rear with stabiliser bar
<b>Temperature Display</b>	— Outside, located in instrument cluster
<b>Trim</b>	— Soft touch surfaces and arm rests and door panels. — Tortoise Shell-style includes steering wheel upper half, door pull handles and shift knob (3.5L V6 & 3.0L CRD) — California Walnut-style includes steering wheel upper half, door pull handles and shift knob (5.7L HEMI V8)
<b>Trip Computer</b>	— including average fuel economy, distance to empty, travel time and two trip odometers
<b>Tyres</b>	— P225/60R18 BSW Pirelli Summer Performance (3.5L V6, 3.0L CRD & 5.7L Hemi) — P245/45ZR20 & P255/45ZR20 Goodyear Eagle F1 Supercar (6.1L SRT 8)
<b>Wheels</b>	— 18" polished aluminium (3.5L V6, 3.0L CRD & 5.7L Hemi) — 20" polished aluminium (6.1L SRT8)
<b>Windows</b>	— Power with front one-touch-up and -down, disable and anti-pinch technology
<b>Windshield Wipers</b>	— Programmable rain-sensitive automatic

## Features, Options and Package Groups

	300C Sedan	300C Touring	300C SRT8 Sedan/Touring
<b>Convenience Group</b> — Heated second row seats (option on 3.0L & 5.7L)	○	○	
<b>Sound System</b> — MyGIG™ Multimedia Infotainment System with Navigation and U-Connect Hands free (REP)	○	○	•
<b>Sunroof</b> — Power with express-open/-close feature	○	○	○
<b>Roof Rack</b>		•	

NOTE: Adaptive Cruise Control on 2008MY Early Production 300C 5.7L Sedan - Limited Availability

