



CITROËN BERLINGO

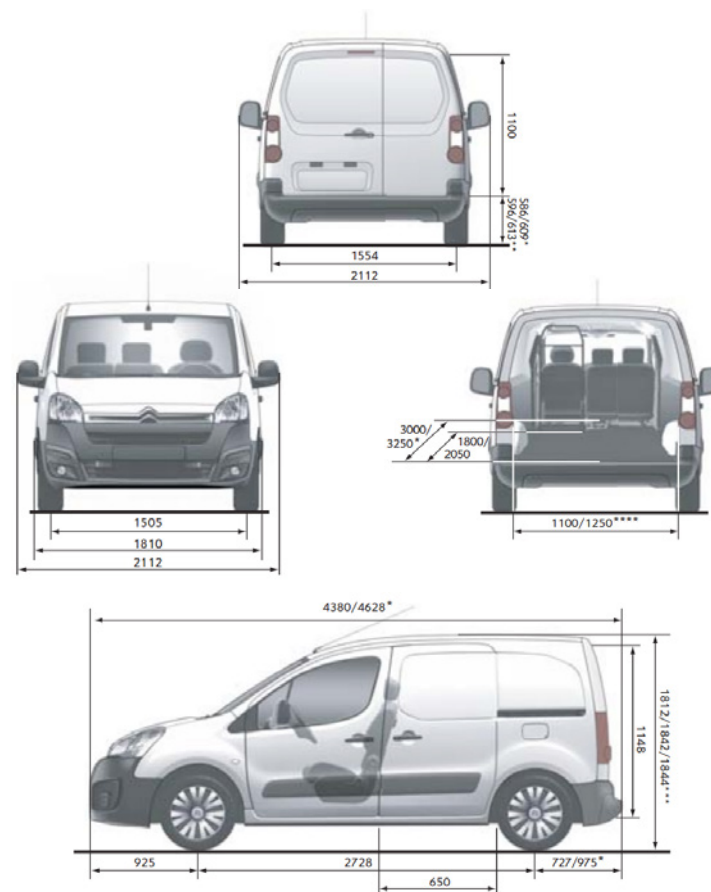


# TECHNICAL SPECIFICATION

## CITROËN BERLINGO MODELS

ENGINE	Short Body Manual	Long Body Manual	Long Body Semi-Automatic
Capacity (cc)	1587	1560	1560
Cylinders	4 in line	4 in line	4 in line
Max power (kW/rpm)	80/5800	66/4000	66/4000
Max torque (Nm/rpm)	147/4000	215/1500	215/1500
Fuel Type	Petrol	Turbo Diesel	Turbo Diesel
Fuel System	Multi-point electronic fuel injection	High pressure direct injection	High pressure direct injection
Stop & Start	N/A	N/A	●
Euro Status	Euro 4	Euro 4	Euro 5
TRANSMISSION	Five speed manual	Five speed manual	Six speed Semi-Automatic
PERFORMANCE			
Max speed (km/h)	167	160	165
0-100km/h (secs)	13.1	13.4	15.7
ECONOMY Litres/100km			
Urban Cycle	11	6.7	5.0
Extra Urban	6.7	5.2	4.5
Combined	8.2	5.7	4.7
CO <sub>2</sub> EMISSIONS (g/km)	195	150	122
WEIGHTS (kg)			
Payload	850	750	750
Kerb weight (2 seat/3seat)	1565/1583	1580/1596	1611/1615
Gross Vehicle Weight (2 seat/3seat)	2195/2210	2130/2160	2150/2160
Max towing weight braked (2 seat/3seat)	830/815	800/800	1000/990
Max towing weight unbraked (2 seat/3seat)	705/715	725/740	730/740
BRAKES	ABS standard on all models; Front brakes: Ventilated discs; Rear brakes: Solid discs		
STEERING	Variable power assisted steering		
Turning circle between kerbs (m)	11.0		
SUSPENSION			
Front suspension	Independent MacPherson type struts with triangulated lower wishbone suspension arms; coil springs; integral, telescopic, hydraulic dampers and anti-roll bar		
Rear suspension	Independent trailing arm suspension with semi-deformable crossmember; coil springs; inclined shock absorbers on hydraulic mounts and anti-roll bar		
FUEL TANK CAPACITY Litres	60		
LOAD VOLUMES & INTERIOR DIMENSIONS			
Loadspace volume to back of front seats/with passenger seat folded (m <sup>3</sup> )	3.3/3.7	3.7/4.1	3.7/4.1
Interior height (mm)	1100	1100	1100
Total load length/with passenger seat folded (mm)	1800/3000	2050/3250	2050/3250
Width between wheel arches (mm)	1230	1230	1230
EXTERIOR DIMENSIONS (mm)			
Length/Wheelbase	4380/2728	4628/2728	4628/2728
Width/Height	1810/1834	1810/1834	1810/1834

## DIMENSIONS



\* Load width when doors open min/max \*\* L1/L2 models  
 \*\*\* Dependent on versions and options  
 All measurements are in millimetres.

# EQUIPMENT SPECIFICATION

## MODEL YEAR 2016

	SHORT BODY MANUAL	LONG BODY MANUAL	LONG BODY AUTOMATED
<b>SAFETY &amp; SECURITY</b>			
ABS	●	●	●
Electronic Stability Control (ESC) with traction control and Hill Start Assist function	●	●	●
Driver's airbag	●	●	●
Front passenger and lateral airbags	○ <sup>1</sup>	○ <sup>1</sup>	○ <sup>1</sup>
Height-adjustable seat belts	●	●	●
High level third brake light	●	●	●
Rear fog light with twin reversing lights	●	●	●
Transponder immobiliser	●	●	●
Front seat belt pre-tensioners with force-limiters	●	●	●
Ladder frame bulkhead	●	●	●
High-frequency multifunction plip remote control with central locking	●	●	●
Reverse Camera	●	●	●
<b>LIGHTING &amp; VISIBILITY</b>			
Height-adjustable halogen headlamps	●	●	●
Load compartment light	●	●	●
'Guide-me-home' headlamp function	●	●	●
Two-speed and intermittent speed-sensitive windscreen wipers with flat blades	●	●	●
Rear window wiper with flat blade	●	●	●
Electrically adjustable door mirrors	●	●	●
Automatic illumination of cabin lighting set via a ceiling mounted button	●	●	●
Front courtesy reading lights	●	●	●
<b>STYLE EXTERIOR</b>			
Side rubbing strips	●	●	●
15" 'Feroe' wheel covers (set of four)	●	●	●
Two asymmetrical glazed rear doors	●	●	●
Twin sliding side loading doors	●	●	●
Look Pack - Colour coded front bumper, door handles, 2 mirrors, chrome chevrons, LED daytime running lights, cornering fog lights and 15" Airflow wheel covers.	○	○	○

● Standard equipment

○ Optional factory fitted equipment

<sup>1</sup> Includes EXTENSO® option not available with two seat configuration

<sup>2</sup> Not compatible with twin sliding doors

<sup>3</sup> Not available with EXTENSO® option

\*(Which ever comes first.) The Warranty is subject to the New Vehicle Warranty. Terms and Conditions; a full copy of the terms and conditions is available via our website [www.citroen.com.au](http://www.citroen.com.au).

	SHORT BODY MANUAL	LONG BODY MANUAL	LONG BODY AUTOMATED
<b>AUDIO/NAVIGATION</b>			
Connecting Box – Bluetooth® system with USB socket	●	●	●
RDS stereo radio/MP3 compatible CD player	●	●	●
Apple car play/ Android auto	●	●	●
Touch screen	●	●	●
Voice Recognition	●	●	●
<b>DRIVER INFORMATION</b>			
Multifunction on-board trip computer with trip and mileage recorders	●	●	●
Rev counter and digital clock	●	●	●
Door opening warning light and audible lights-on warning	●	●	●
Maintenance, coolant and oil level indicators	●	●	●
Fuel gauge and lockable fuel cap	●	●	●
Handbrake, hazard and indicator warning lights	●	●	●
Side headlamps and main beam warning lights	●	●	●
Steel spare wheel	●	●	●
Audible brake fluid warning	●	●	●
<b>COMFORT &amp; CONVENIENCE</b>			
Air conditioning	●	●	●
Carpet on cabin floor	●	●	●
Cruise control with driver adjustable speed limiter	●	●	●
Variable power assisted steering with height and reach adjustable steering wheel	●	●	●
Driver's and passenger's sunvisor with mirror	●	●	●
Front electric windows with 'one-touch' operation and anti-pinch	●	●	●
12 volt socket	●	●	●
Height-adjustable driver's seat with armrest	●	●	●
Cruise Control, speed limiter, radio and Bluetooth® controls mounted behind the steering wheel within easy reach	●	●	●
Gear selection dial & paddle shifters	●	●	●
<b>SEATING</b>			
Single front passenger seat	● <sup>3</sup>	● <sup>3</sup>	● <sup>3</sup>
EXTENSO® modular folding 3 passenger bench seat with 7.5 litre storage box under the middle seat	○	○	○

	SHORT BODY MANUAL	LONG BODY MANUAL	LONG BODY AUTOMATED
<b>STORAGE</b>			
Overhead storage shelf	●	●	●
Door pockets with bottle holders	●	●	●
Six floor-mounted anchorage points in load compartment	●	●	●
Three anchorage points on each side of the roof (75kg max load)	●	●	●
Passenger side glove box	●	●	●
Storage drawer under driver's seat	●	●	●
Removable storage compartment between seats	● <sup>3</sup>	● <sup>3</sup>	● <sup>3</sup>
4.1 litre glove box behind the steering wheel	●	●	●
<b>CITROËN CONFIDENCE</b>			
3-Year/100,000km Warranty*	●	●	●
3-year/100,000km Roadside Assist	●	●	●
5-year Anti Corrosion Warranty*	●	●	●



N.B This image shows optional extenso seat.

# WHAT COLOUR SHOULD A LEGEND BE?

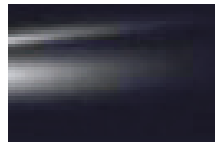
YOU'LL KNOW IT WHEN YOU SEE IT.

IT'S TIME TO MAKE THE  
CITROËN BERLINGO YOUR OWN.

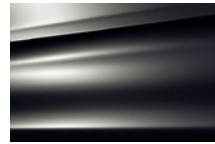
## BODY COLOURS



Blanc Banquise (S)



Noir Onyx (P)



Gris Shark (P)



Rouge Ardent (P)



Gris Aluminium (P)

## TRIM



Standard on all models

Grey 'Gazyban' cloth

(S) Solid

(P) Premium Paint

Please note: Colours and pictures shown are for illustration purposes only. Please consult your Dealer for definitive colour and trim/upholstery details.

Please don't throw me away, give me to a friend or recycle me.

[www.citroen.com.au](http://www.citroen.com.au)

CITROËN Automobiles Australia offers this information as a general guide to product specifications. All data is believed to be correct as at October 2015, however, as vehicle development is an ongoing process, changes may occur from time to time which will not necessarily be reflected in this brochure. Therefore, CITROËN Automobiles Australia reserves the right to change specifications without notice. Accordingly, this information should not be regarded as an infallible guide to correct specifications, nor does it constitute an offer for sale of any particular vehicle. Whilst all care has been taken to provide you with information in regards to the general use of CITROËN products, you should not rely solely on the information provided in this brochure. Purchasers or prospective purchasers should discuss individual intended purposes or use of CITROËN products with your CITROËN dealer before making a purchase decision. Dealers are not agents of CITROËN Automobiles Australia and have absolutely no authority to bind CITROËN Automobiles Australia by an express or implied undertaking or representation. CITROËN Automobiles Australia is the trading name of Sime Darby Motors Wholesale Australia Pty Ltd (ABN 58 116 052 754.)