



CITROËN BERLINGO



CRÉATIVE TECHNOLOGIE

Launched in 1996, the CITROËN BERLINGO was the first of its kind. A van with a special, integrated body style combining looks and functionality. From its innovative debut to the present day, the CITROËN BERLINGO has never stopped moving forwards.

Looking beyond its attractive styling, the CITROËN BERLINGO is also remarkable for its robust, practical and roomy architecture. It has been designed to make loading and unloading of cargo quick and easy with large intelligently designed 60/40 rear barn doors, which swing open 180° to allow the driver to back up almost flush with a loading bay. The CITROËN BERLINGO is able to carry two Euro size pallets (800mm x 1,200mm each) or one standard Australian size pallet (1,165mm x 1,165mm) easily and safely.

There are no fewer than fourteen different storage areas in the main cabin allowing owners to conveniently store everyday work materials close at hand. In the standard two seat configuration the second seat folds down to create a flat work surface and a removable storage bin is located between the seats. For even more versatility, the optional Extenso three seat configuration provides a more convenient work surface on the centre seat, which can also fold backwards to reveal a 7.5 litre storage box. The far passenger seat can be flipped forward once to carry load lengths of up to 3.25m long or folded again to increase the load volume up to 4.1 m³ on the L2 model. To carry more delicate items the passenger seat folds up cinema-style to accommodate a fragile load in the footwell.

For the latest CITROËN Berlingo specifications please visit www.citroen.com.au or contact your local CITROËN dealer.



EQUIPMENT SPECIFICATION

MODEL YEAR 2013

	SHORT BODY	LONG BODY
SAFETY & SECURITY		
ABS	●	●
Electronic Stability Control (ESC) with traction control and Hill Start Assist function	○	○
Driver's airbag	●	●
Front passenger and lateral airbags	○	○
Height-adjustable seat belts	●	●
High level third brake light	●	●
Rear fog light with twin reversing lights	●	●
Transponder immobiliser	●	●
Front seat belt pre-tensioners with force-limiters	●	●
Ladder frame bulkhead	●	●
High-frequency multi-function flip remote control central locking with deadlocks	●	●
LIGHTING & VISIBILITY		
Height-adjustable halogen headlamps	●	●
Load compartment light	●	●
'Guide-me-home' headlamp function	●	●
Two-speed and intermittent speed-sensitive windscreen wipers with flat blades	●	●
Rear window wiper with flat blade	●	●
Visibility pack - automatic rain sensitive windscreen wipers, automatic illumination of headlamps, heat reflecting windscreen and front fog lights with static cornering function	○	○
Electrically adjustable door mirrors	●	●
Automatic illumination of cabin lighting set via a ceiling mounted button	●	●
Front courtesy reading lights	●	●
STYLE EXTERIOR		
Side rubbing strips	●	●
Tinted windows	●	●
15" 'Feroe' wheel covers (set of four)	●	●
Two asymmetrical glazed rear doors	●	●
Nearside sliding side loading door	○	○
Twin sliding side loading doors	○	●
Roof flap with nearside sliding side loading door	○ ¹	○

	SHORT BODY	LONG BODY
AUDIO/NAVIGATION		
Connecting Box – Bluetooth® system with USB socket	○	●
RDS stereo radio/MP3 compatible CD player	●	●
DRIVER INFORMATION		
Multi-function on-board trip computer with trip and mileage recorders	●	●
Rev counter and digital clock	●	●
Door opening warning light and audible lights-on warning	●	●
Maintenance, coolant and oil level indicators	●	●
Fuel gauge and lockable fuel cap	●	●
Handbrake, hazard and indicator warning lights	●	●
Side headlamps and main beam warning lights	●	●
Steel spare wheel	●	●
Audible brake fluid warning	●	●
COMFORT & CONVENIENCE		
Air conditioning	●	●
Carpet on cabin floor	●	●
Cruise control with driver adjustable speed limiter	●	●
Rear parking sensors	○	○
Variable power assisted steering with height and reach adjustable steering wheel	●	●
Driver's and passenger's sunvisor with mirror	●	●
Front electric windows with 'one-touch' operation and anti-pinch	●	●
12 volt socket	●	●
Height-adjustable driver's seat with armrest	●	●
Cruise Control, speed limiter, radio and Bluetooth® controls mounted behind the steering wheel within easy reach	●	●
SEATING		
Single front passenger seat	● ²	● ²
EXTENSO® modular folding 3 passenger bench seat with 7.5 litre storage box under the middle seat	○	○

	SHORT BODY	LONG BODY
STORAGE		
Overhead storage shelf	●	●
Door pockets with bottle holders	●	●
Six floor-mounted anchorage points in load compartment	●	●
Three anchorage points on each side of the roof (75kg max load)	●	●
Passenger side glove box	●	●
Removable storage compartment between seats	● ²	● ²
4.1 litre glove box behind the steering wheel	●	●
CITROËN CONFIDENCE		
3-Year/100,000km Warranty*	●	●
3-year/100,000km Roadside Assist	●	●
5-year Anti Corrosion Warranty*	●	●



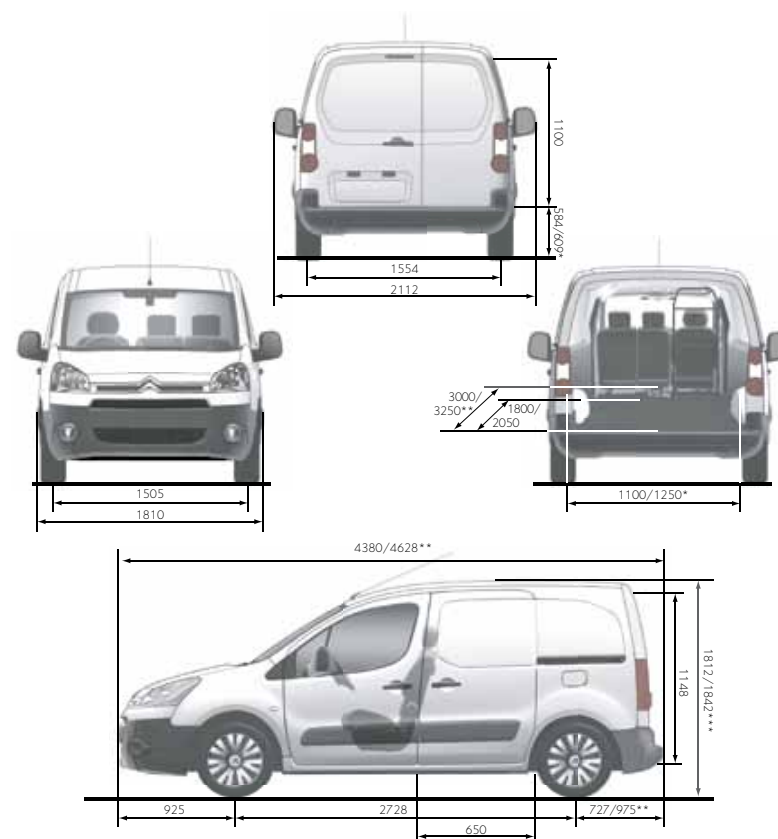
● Standard equipment
○ Optional factory fitted equipment
¹ Not compatible with twin sliding doors
² Not available with EXTENSO® option

TECHNICAL SPECIFICATION

CITROËN BERLINGO MODELS

ENGINE	L1 Short Body Petrol	L2 Long Body Turbo Diesel
Capacity (cc)	1587	1560
Cylinders	4 in line	4 in line
Max power (kW/rpm)	80/5800	66/4000
Max torque (Nm/rpm)	147/4000	215/1500
Fuel system	Multi-point electronic fuel injection	High pressure direct injection
Euro Status	Euro 4	Euro 4
TRANSMISSION	Five speed manual	Five speed manual
All figures driver alone PERFORMANCE		
Max speed (km/h)	167	160
0-100km/h (secs)	13.1	13.4
ECONOMY Litres/100km		
Urban Cycle	11	6.7
Extra Urban	6.7	5.2
Combined	8.2	5.7
CO₂ EMISSIONS (g/km)		
	195	150
Please note: the maximum plated weights must not be exceeded WEIGHTS (kg)		
Payload	850	750
Kerb weight (2 seat/3seat)	1565/1583	1580/1596
Gross Vehicle Weight (2 seat/3seat)	2195/2210	2130/2160
Max towing weight braked (2 seat/3seat)	830/815	800/800
Max towing weight unbraked (2 seat/3seat)	705/715	725/740
BRAKES	ABS standard on all models; Front brakes: Ventilated discs; Rear brakes: Solid discs	
STEERING	Variable power assisted steering	
Turning circle between kerbs (m)	11.0	
SUSPENSION		
Front suspension	Independent trailing arm suspension with semi-deformable crossmember; coil springs; inclined shock absorbers on hydraulic mounts and anti-roll bar	
Rear suspension	Independent MacPherson type struts with triangulated lower wishbone suspension arms; coil springs; integral, telescopic, hydraulic dampers and anti-roll bar	
FUEL TANK CAPACITY Litres	60	
LOAD VOLUMES & INTERIOR DIMENSIONS		
Loadspace volume to back of front seats/with passenger seat folded (m ³)	3.3/3.7	3.7/4.1
Interior height (mm)	1100	1100
Total load length/with passenger seat folded (mm)	1800/3000	2050/3250
Width between wheel arches (mm)	1230	1230
EXTERIOR DIMENSIONS (mm)		
Length/Wheelbase	4380/2728	4628/2728
Width/Height	1810/1834	1810/1834

DIMENSIONS



* Load width when doors open min/max ** L1/L2 models

*** Dependent on versions and options

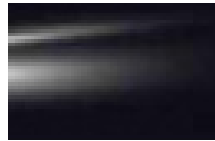
All measurements are in millimetres.

WHAT COLOUR SHOULD A LEGEND BE? YOU'LL KNOW IT WHEN YOU SEE IT. IT'S TIME TO MAKE THE CITROËN BERLINGO YOUR OWN.

BODY COLOURS



Blanc Banquise (S)



Noir Onyx (SS)



Rouge Ardent (SS)



Gris Aluminium (M)

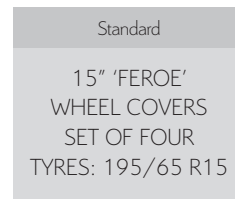
TRIM



Standard on all models

Grey 'Gazyban' cloth

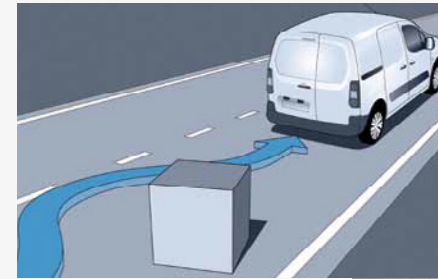
WHEELS



- (S) Solid
- (SS) Signature Solid
- (M) Metallic

Please note: Colours and pictures shown are for illustration purposes only. Please consult your Dealer for definitive colour and trim/upholstery details.

BE THE SAFETY EXPERT.

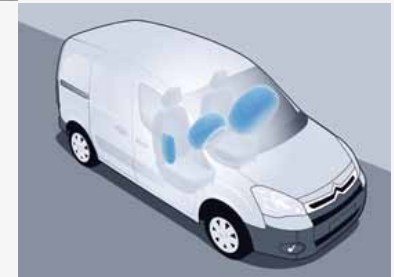


▶ ELECTRONIC STABILITY CONTROL (ESC)

With natural poise and sure-footed handling, the optional Electronic Stability Control (ESC) inspires confidence on the road.

▶ AIRBAGS

A driver's airbag is standard on all models and up to three additional airbags can be specified, giving both front and lateral protection.

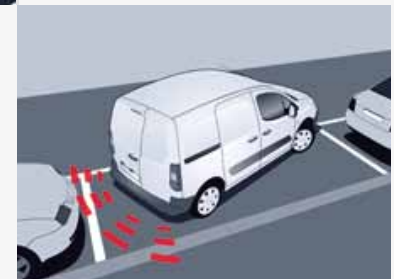


▶ VISIBILITY PACK

Safe progress is enhanced by optional automatic rain-sensitive windscreen wipers and automatic illumination of headlamps. As weather conditions change, the CITROËN Berlingo looks after you.

▶ REAR PARKING SENSORS

Parking your van shouldn't add to the burden of a busy day. Optional rear parking sensors let you manoeuvre safely and quickly into the tightest spots, fully aware of hidden obstacles. Job done.



Please don't throw me away, give me to a friend or recycle me.

CITROËN Automobiles Australia offers this information as a general guide to product specifications. All data is believed to be correct as at April 2014, however, as vehicle development is an ongoing process, changes may occur from time to time which will not necessarily be reflected in this brochure. Therefore, CITROËN Automobiles Australia reserves the right to change specifications without notice. Accordingly, this information should not be regarded as an infallible guide to correct specifications, nor does it constitute an offer for sale of any particular vehicle. Whilst all care has been taken to provide you with information in regards to the general use of CITROËN products, you should not rely solely on the information provided in this brochure. Purchasers or prospective purchasers should discuss individual intended purposes or use of CITROËN products with your CITROËN dealer before making a purchase decision. Dealers are not agents of CITROËN Automobiles Australia and have absolutely no authority to bind CITROËN Automobiles Australia by an express or implied undertaking or representation. CITROËN Automobiles Australia is the trading name of Sime Darby Motors Wholesale Australia Pty Ltd (ABN 58 116 052 754.)

www.citroen.com.au

CRÉATIVE TECHNOLOGIE

