

	F6 Typhoon	F6 Tornado
Engine		
F6 270 - high-performance 4.0L turbo charged DOHC 24 valve in-line 6	S	S
Maximum power (DIN) - 270kW @ 5000rpm	S	S
Maximum torque (DIN) - 550Nm @ 2000 - 4250rpm	S	S
Peak boost - 0.64 Bar	S	S
F6 air box with dual Ram Air intakes	S	S
F6 high strength conrods	S	S
F6 oil cooler	S	S
F6 engine management system	S	S
Garrett GT3540 turbo	S	S
Aluminium air-to-air intercooler	S	S
FPV high-flow exhaust system	S	S
High capacity in-tank fuel pump	S	S
FPV blue rocker cover	S	S
Twin knock sensors and Euro III compliant calibration	S	S
Fuel Consumption¹		
ADR81-01 (L/100km) - manual / automatic	13.5 / 13	13.5 / 13
Comparative CO2 Emissions (grams/km) - manual / automatic	322 / 308	322 / 308
Transmission & Driveline		
Close ratio 6-speed manual transmission (Tremec T-56)	S	S
F6 AP Racing twin-plate clutch	S	S
F6 hydraulic clutch release system	S	S
ZF 6-speed high-torque automatic transmission with Sequential Sports Shift	NCO	NCO
Limited Slip Differential (LSD)	S	S
Ride & Handling		
FPV Performance independent double wishbone front suspension	S	S
Performance Control Blade Independent Rear Suspension (IRS)	S	-
Performance rear suspension	-	S
5-spoke 19" x 8" alloy wheels in Dark Argent with machined face, fitted with Dunlop SP Sport Maxx 245/35ZR19 tyres	S	S
5-spoke 19" x 8" alloy wheels in Dark Argent with machined rim, fitted with Dunlop SP Sport Maxx 245/35ZR19 tyres	O	O
Matching alloy spare wheel	S	S
Black chrome wheel nuts	S	S
Matching black chrome locking wheel nuts	S	S
Brakes		
Performance Brakes - 355 x 32mm cross drilled and slotted front rotors with Brembo 4 piston calipers and 328 x 26mm cross drilled rear rotors with red single piston calipers	S	S
Premium Brakes - Sedan - 355 x 32mm cross drilled and slotted front rotors with Brembo 6 piston calipers and 330 x 28mm cross drilled rear rotors with Brembo 4 piston calipers	O	-
Premium Brakes - Ute - 355 x 32mm cross drilled and slotted front rotor with Brembo 6 piston calipers and 328 x 26mm cross drilled rear rotors with red single piston calipers	-	O
Anti-lock Braking System (ABS) - 4 channel with traction control	S	S
Electronic Brakeforce Distribution (EBD)	S	S
Interior		
Interior Command Centre finished in satin alloy with Prestige audio system and LCD screen	-	S
Prestige Interior Command Centre finished in satin alloy with Premium audio system, dual-zone climate control and TFT colour screen	S	O*
Trip computer	S	S

S - Standard. O - Options that can be ordered before vehicle is manufactured. NCO - No cost options that can be ordered before vehicle is manufactured. - - Not available.
¹ These figures are obtained from controlled laboratory tests conducted by Ford Motor Company of Australia Limited to Australian Design Rule 81/01, which requires use of 95 RON fuel, and are provided to assist you in comparing the fuel consumption of FPV models with other vehicles. The actual fuel consumption you achieve will depend, however, on many factors, including your driving habits, the prevailing conditions and your vehicle's equipment, condition and use. All figures based on FPV F6 Typhoon.
* Included with optional Premium audio system on F6 Tornado.

	F6 Typhoon	F6 Tornado
FPV Sports gauges (with oil pressure & turbo boost readouts)	S	S
FPV shift alert (manual only)	S	S
Technik trim highlights	S	S
Roof mounted digital clock	S	.*
CFC free air-conditioning	S	S
Automatic climate control with dual-zone temperature control	S	0*
Outside temperature display	S	.*
Rear occupant heating / cooling vents finished in satin alloy	S	-
Front power windows	S	S
Rear power windows	S	-
Central locking	S	S
Remote keyless entry with panic alarm	S	S
Automatic headlights on / off	S	S
Cruise control with steering wheel mounted switches	S	S
Steering wheel mounted audio controls	S	S
Performance steering wheel	S	S
Unique FPV manual gear knob (manual only)	S	S
Unique FPV automatic performance shifter (automatic only)	S	S
Momo leather / aluminium gear knob (manual only)	A	A
Leather console lid with silver stitching	S	S
Power adjustable pedals (automatic only)	O	-
Race inspired drilled alloy pedal covers	S	S
Suede-feel manual gear boot with silver stitching	S	S
Technik cloth door trim inserts with suede-feel arm rests	S	S
Overhead console with sunglasses holder ²	S	S
Map lights	S	S
Courtesy lights	S	S
Scuff plate inserts with FPV logo	S	S
FPV build number badge with unique identifier	S	S
FPV floor mats	O	O
FPV instrument graphics with blue illumination	S	S
FPV starter button	S	S
Smoker's pack	A	A
Seatback organiser	A	A
Mobile phone presenter	A	A
Pollen filter	A	A
Disabled Driver's Kit (automatic only)	NCA	NCA
Seating		
FPV Sports seats - Technik cloth and suede-feel bolsters, FPV logo embroidery and F6 silver stitching	S	S
FPV Sports seats - Leather and suede-feel bolsters, FPV logo embroidery and F6 silver stitching	O	O
Net map pockets in front seat backs	S	S
Driver and front passenger lumbar support adjustments	S	S
60/40 split fold-down rear seat back	S	-
Rear centre arm rest with cup holders	S	-
4-Way driver's seat power adjustment	S	S

S - Standard. **O** - Options that can be ordered before vehicle is manufactured. **-** - Not available. **A** - Options that can be fitted at any time. **NCA** - Available at no cost when ordered at time of purchase. **2.** Sunglasses holder deleted when sunroof fitted.

* Included with optional Premium audio system on F6 Tornado.

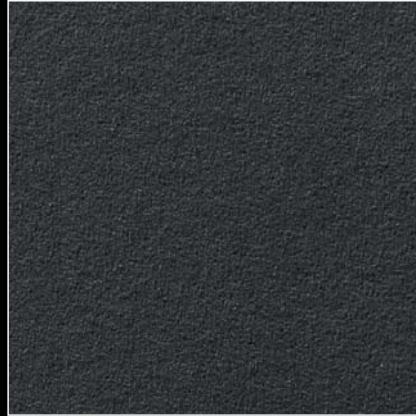
Interiors

F6 interior design reflects the emphasis on luxury and technical sophistication.

Standard

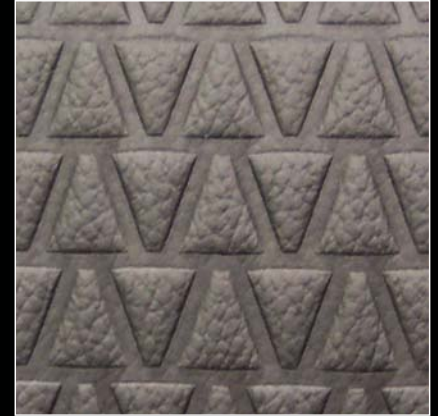


F6 Technik



Black suede-feel

Optional



F6 leather

Standard	F6 Typhoon	F6 Tornado
Trim insert	F6 Technik	F6 Technik
Bolster	Black suede-feel	Black suede-feel
Optional		
Trim insert	F6 leather	F6 leather
Bolster	Black suede-feel	Black suede-feel



Interior trim thread

F6 silver stitching.

	F6 Typhoon	F6 Tornado
Audio		
Prestige audio system with 6-disc in-dash CD, 6 speakers and LCD display screen	-	S
Premium audio system with 6-disc in-dash CD, 6 speakers and colour TFT display screen	-	O
Premium audio system with colour TFT display screen, 6-disc in-dash CD, 6 speakers, 150 watt amplifier & 150 watt sub-woofer	S	-
Auxiliary audio plug-in (iPod®/ MP3 capability)†	A	A
On glass radio antenna	S	S
DVD satellite navigation system	O	-
Exterior Styling		
FPV front fascia with F6 splitter in accent colour and Titanium finish grille mesh featuring FPV lettering	S	S
FPV upper grille in Titanium finish with F6 badge	S	S
Front fog lamps with contrasting F6 accent colour bezel	S	S
FPV side skirts with flutes in contrasting F6 accent colour	S	-
FPV 2-piece side skirts	-	S
FPV rear fascia with contrasting F6 grille mesh and accent colour	S	-
Unique F6 rear spoiler with centre strut and LED stop light	S	-
FPV soft tonneau	-	S
Alloy Sports bar with FPV soft tonneau	-	O
FPV hard tonneau with spoiler	-	O
Alloy Sports bar with FPV hard tonneau	-	O
Prestige paint	NCO	NCO
Exposed single D chrome tail pipe	S	-
FPV exhaust with twin chrome tail pipes	-	S
Sunroof	O	-
Carry bar	A	-
Safety & Security		
Intelligent Safety System:	S	S
- Driver and front passenger airbags	S	S
- Airbag dual stage inflators	S	S
- Pyrotechnic front seat belt buckle pretensioners	S	S
- Beltminder system	S	S
- Door ajar warning	S	S
- Three point seat belts	S	S
- Advanced restraints module	S	S
- Crash severity sensor	S	S
- Driver's seat sensor	S	S
Side airbags (driver and front passenger only)	S	-
Anti-lock braking system (ABS) - 4 channel	S	S
Traction Control	S	S
Rear parking sensors	O	-
Smartshield security system	S	S
FPV fully integrated alarm with battery back-up	S	S
FPV ID Datadot Identification	S	S
Child proof rear door locks	S	-
Child restraints	A	A

S - Standard. O - Options that can be ordered before vehicle is manufactured. NCO - No cost options that can be ordered before vehicle is manufactured.
- - Not available. A - Options that can be fitted at any time.

† iPod®/MP3 device not included. iPod® is a trademark of Apple Computer Inc., registered in the United States and other countries.