

500
500C



Be happy

With a genuine smile and lots of joie de vivre, the Fiat 500 is a joyful car that puts you in a good mood - a happy car. It's a whole new way of seeing the world. Fresh, sunny, open. Just like the latest version in the range: the new Fiat 500C, the convertible that allows you to enjoy travelling with total freedom.





Happy to meet you, Fiat 500! Good things come in small packages! Hatchback or convertible, the Fiat 500 is a car with more than fifty years of history behind it, offering the best in terms of technology, onboard comfort and environmentally friendly solutions.



Brilliant, innovatively advanced and reliable to even the highest safety standards, the classic model now comes in a convertible version expressing the very essence of its personality. The new Fiat 500C is a smiling, fun car with plenty of character. In a few words: a carefree car.



International vehicles shown. Vehicles depicted are not reflective of Australian specifications.

Be open



With such a fun, carefree car, how can you resist opening up to the world above? The Fiat 500C will make your dreams come true: here is a convertible that will make every trip even more pleasurable. Open up and let the sunshine in along every road you travel.



The sky travels with you - The exclusive roof is what makes the Fiat 500C instantly recognisable. A true design feature, it comes in different colours (red, ivory and black) and stands out for its innovative movement with electric roof control and its use of cutting-edge technical solutions, from the glass windscreen to the built-in third brakelight. The special sardine-tin folding system, which may be opened in 3 different positions, means you needn't give up precious centimetres of luggage space in the boot or the comfort of the 4 seat interior. Great, as with such a cool car you're never going to be short of friends!

* Please note - tan roof only available on Ruby Red 500C.



Inside, the Fiat 500 is just what you'd expect from an Italian car.
Absolutely stunning with superb attention to detail.



International LHD vehicles shown. Vehicles depicted are not reflective of Australian specifications.



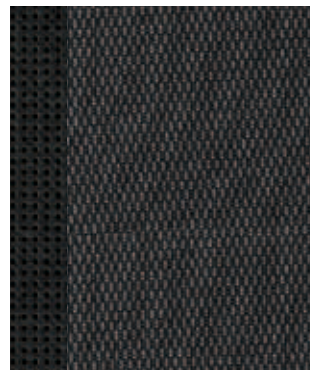
The Fiat 500 is the first car with a body length under 3.6m to earn a 5 star Euro NCAP Safety rating - Europe's highest. From reinforced bodyshell to pre-tensioned belts, from active safety devices, such as ABS with EBD, and 7 airbags for all-round passenger protection. In addition, stability and traction control are standard on all models.

Upholstery/Interior

Black Interior - 500 & 500C



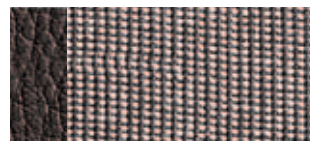
519 Grey-Black/Black.



Ivory Interior - Ruby Red 500C only

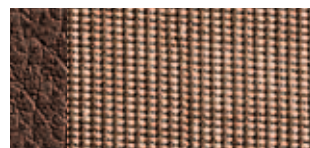


714 Black-Ivory/Black.



*Ruby Red 500C only

721 Black-Ivory/Ivory.



Interior/exterior combinations

Fabric colour	Black-Ivory		Grey-Black	
	Interior colour	Black 714 (500C)	Ivory 721 (500C)	Black 519 (500)
SOLID COLOUR				
268 Ambient White	■	-	■	
METALLIC COLOURS				
876 Provocative Black	■	-	■	
SPECIAL PASTEL COLOURS				
111 Pasodoble Red	■	-	■	
PEARLESCENT COLOURS (500C Only)				
270 Funk White	■	-	-	
164 Ruby Red	-	■	-	

■ Standard - Not Available



SOLID COLOUR

268 Ambient White.

METALLIC

876 Provocative Black.

SPECIAL PASTEL

111 Pasodoble Red.

PEARLESCENT (500C ONLY)

164 Ruby Red. 270 Funk White.

Fiat 500 & 500C Technical Specifications

Engine	1.4 PETROL
No. of Cylinders, Layout	4 in line
Capacity (cc)	1368
Bore x Stroke (mm)	72.0 x 84.0
Compression Ratio	10.8:1
Max. Power (kW) at rpm	74 6000
Peak Torque (Nm) at rpm	131 4250
Fuel System	Timed MPI sequential electronic
Number of Valves	16
Ignition	Electronic

Fuel Consumption (litres/100km) [^]	
City Cycle [^]	8.2
Highway Cycle [^]	5.2
Combined [^]	6.3
CO2 Emissions (g/km)	149
Fuel Tank (litres)	35

Wheels	
Wheel	16" Alloy
Tyres	195/45 R16
Space Saver Space Wheel	

Transmission	
Drive	Front
Manual	
1st	3.545
2nd	2.158
3rd	1.48
4th	1.121
5th	0.921
6th	0.766
Reverse	3.818
Optional Dualogic Transmission	
1st	3.545
2nd	2.158
3rd	1.48
4th	1.121
5th	0.897
Reverse	3.818

Performance	
Top Speed (km/h)	182
Acceleration (0-100 km/h)	10.7



[435]
16" Funky Alloy



[5EQ]
16" Chic Alloy

Dimensions	
Length	3546
Width	1627
Height	1488
Track Front/Rear	1414/1408
Wheelbase (mm)	2300
Luggage Space (litres) Rear Seats Up/Down	185/550
Kerb Weight	930
Payload	440

Steering	
Rack & pinion with Hydraulic power steering featuring Dualdrive electrical power steering	
Turning Circle (m)	9.28

Suspension	
Front	Independent MacPherson with lower wishbones and anti-roll bar
Rear	Torsion beam rear suspension

Brakes	ABS with EBD
Front (mm)	Ventilated disc 257mm (500 284mm)
Rear (mm)	Solid disc 240mm

Specifications	500	500C
Climate Control	■	■
Air Conditioning	■	■
Trip Computer	■	■
Power Windows	■	■
Remote Central Locking	■	■
Sports Instrumentation	■	■
Height Adjustable Front Head Rests	■	■
Height Adjustable Rear Headrests	■	■
Height Adjustable Steering Wheel	■	■
Height Adjustable Drivers Seat	■	■
50/50 Split Fold Rear Seat	■	■
Lockable Fuel Cap	■	■
Passenger Seat Storage	-	■
Chrome Kit	-	■
Luxury Leather Steering Wheel	■	■
Darkened Tint Rear Windows	■	-
Rear Spoiler	■	-
Chrome Door Sills & Exhaust tip	■	■
Seat Back Pockets	■	■

■ Standard - Not Available

Safety	500	500C
ABS with EBD	■	■
Dual Stage Driver Passenger Airbags	■	■
Side Airbags	■	■
Window Airbags	■	■
Drivers Knee Airbag	■	■
Front Seat Belt Pretensioners with Load Limiter	■	■
Anti-Submarining Front Seats	■	■
Stability & Traction Control, HBA & Hill Holder	■	■
Front Foglights	■	■
Audio		
6 speaker MP3 Compatible CD Player	■	■
Steering Wheel mounted audio Controls	■	■
Bluetooth Handsfree Mobile Connection with Steering Wheel Mounted Controls	■	■
USB Media Connection Port	■	■

[^]Fuel consumption figures tested under controlled factory conditions. Actual fuel consumption may vary based on driving style and prevailing conditions.



www.fiat500.com.au

Dealer Stamp

Fiat cars are imported and distributed by Ateco Automotive Australia Pty Ltd., who reserve the right to alter specifications, equipment and pricing at any time, without warning or notice. Please consult your authorised Fiat dealer for full details as to current pricing, standard and optional equipment, accessories, specifications and availability.

862-874 Elizabeth Street,
Waterloo NSW 2017, Australia
Tel: (02) 8577 8000 Fax: (02) 9701 3555.
Ateco Automotive Pty. Limited. ABN 34 000 486 706.

Printed February 2010.

Part No. FCA090931