



Falcon Wagon



**Spacious and versatile.**

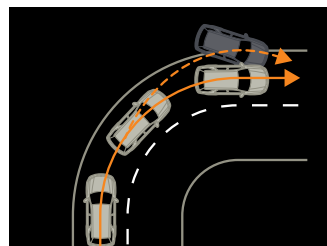
**The BF Falcon Wagon MkIII is a valued business partner and a family favourite.**

When it comes to mixing business with pleasure, the Falcon Wagon is hard to top. That's because it's a vehicle that perfectly blends driving dynamics and comfort with a versatile and spacious interior, catering for all of your load carrying needs. It also boasts first-rate levels of safety. Plus, the option of a factory fitted E-Gas engine means that wherever you travel for business, or with the family, you'll be saving money and helping the environment.



**Airbags.**

Driver and front passenger airbags are designed to enhance your protection in the event of a crash. Falcon Wagon also offers optional front seat side head/thorax\* airbags for added safety.



**DSC.**

Dynamic Stability Control (DSC)\* automatically compensates for loss of control when the vehicle is travelling too fast around a bend. DSC detects sudden changes in steering and braking and then works in tandem with Traction Control and the Anti-lock Braking System (ABS) to help keep the vehicle under control.

\* Driver and front passenger only.  
 # Not available with optional E-Gas engine.



**SPECIFICATIONS AND OPTIONS**

For full specifications and options visit [ford.com.au](http://ford.com.au)



**Standard features.**

- > 4.0L DOHC DIVCT I6 engine
- > 4-Speed automatic transmission with Sequential Sports Shift
- > 16" x 6.5" steel wheels with full wheel covers\*
- > Cruise control with steering wheel mounted switches
- > Automatic headlamps ON/OFF feature
- > Driver and front passenger airbags
- > Steering wheel mounted audio controls
- > Air-conditioning
- > Front power windows
- > Power adjustable side mirrors
- > 4-Way power driver's seat
- > 60/40 Split fold rear seat
- > Single slot CD with AM/FM radio and 4 speakers (100 watts)
- > Pyrotechnic seatbelt buckle pretensioners
- > Dynamic Stability Control (DSC)†
- > Anti-lock Braking System (ABS)
- > Traction Control†
- > Maximum towing capability of 2300kg‡
- > 2 remote flip keys

**Optional features.**

- > E-Gas (Dedicated LPG) engine with 4-speed automatic transmission with Sequential Sports Shift†
- > 16" x 6.5" 5-spoke alloy wheels\*
- > Front seat side head/thorax airbags\*



**Automatic Transmission.**

The 4-speed automatic transmission with Sequential Sports Shift offers silky shift quality and 'Grade Control Logic' which assists with braking and speed control when you're descending steep roads.



**E-Gas.**

The optional E-Gas† Dedicated LPG engine delivers fuel cost savings and is fully integrated with the Falcon Wagon's engine management system.

† DSC and Traction Control not available with optional E-Gas engine. ‡ Subject to State & Territory regulations. When fitted with a Genuine Ford Accessory heavy duty towpack. Requires auxiliary transmission oil cooler. Towball download and rear axle limits must not be exceeded. Please refer to your Ford Dealer for advice. \* Set of four. † Driver and front passenger only. ~ This accessory is a Supplier Branded Accessory and is not manufactured or warranted by Ford. The warranty is provided by the manufacturer of the accessory. Contact your Ford Dealer for details of the manufacturer's warranty applicable to this accessory.

**Personalise your Falcon Wagon.**

You'll have plenty of options with the Falcon Wagon. The huge accessory range lets you personalise your Falcon Wagon to perfectly suit your needs, whether it's about making your business travel more comfortable, entertaining the family or increasing your Falcon Wagon's carrying capacity. For full details and to view the complete Falcon Wagon accessory range please visit [ford.com.au](http://ford.com.au)



**Roof rack.**

Sturdy alloy carrier provides you with added cargo carrying capability, whether it be for work or the weekend.



**Reverse sensing system.**

Warning sounds when the vehicle is too close to an object.



**Garmin Nuvi 260W portable satellite navigation system.™**

Ultra-slim design with a widescreen display for easy map viewing. Includes picture viewer, calculator, currency converter, unit converter and world clock.



**Cargo barrier.**

Easy to install and remove, it attaches to the sides of the cargo area to help protect passengers from loose cargo in severe braking and crash situations.

## Exterior colours.



Winter White



Ego\*



Lightning Strike\*



Steel\*



Kashmir\*



Vixen



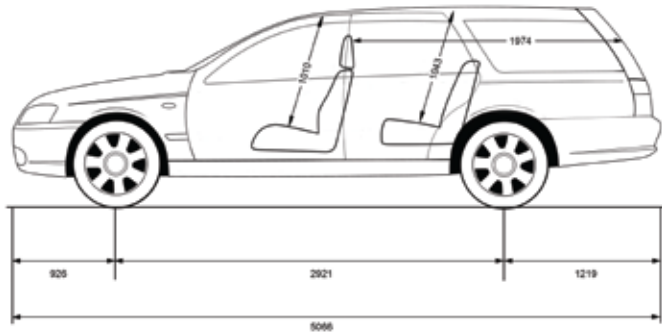
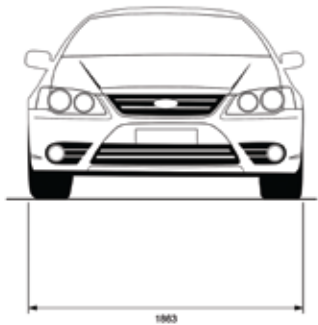
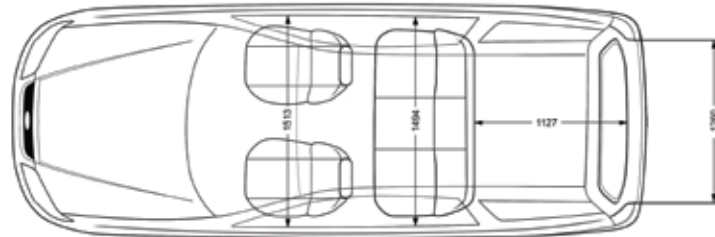
Sensation\*



Silk\*



Silhouette\*



[ford.com.au](http://ford.com.au)

\*Prestige paints are optional extras that incur an additional charge. \*Conditions and exclusions apply. See your authorised Ford Dealer for details.

This brochure is designed to provide you with a general introduction to the Ford Products (including available optional equipment) referred to, and should be read in conjunction with the latest specification sheet. Because of changes in conditions and circumstances Ford\* reserves the right, subject to all applicable laws, at any time, at its discretion, and without notice, to discontinue or change the features, designs, materials, colours and other specifications and the prices of their products, and to either permanently or temporarily withdraw any such products from the market without incurring any liability to any prospective purchaser or purchasers. The latest specification sheet should be referred to for information on the availability, ordering and use of optional equipment. Always consult an authorised Ford Dealer for the latest information with respect to features, specifications, prices, optional equipment and availability before deciding to place an order. \*FORD MOTOR COMPANY OF AUSTRALIA LIMITED, (A.B.N. 30 004 116 223) Registered Office: 1735 Sydney Road, Campbellfield, Victoria 3061, Australia. Printed August 2008. FML4397eb