



Falcon



At Ford, with such a long and successful motoring heritage behind us, we understand that everyone's lifestyle is different. What you look for in a vehicle will be different from the next person. It could be a vehicle that allows you to fit in all the family and hit the open road for the weekend, a zippy urban car that's perfect for tackling city traffic, or maybe you need a vehicle that allows you to play as hard as you work. We'd like to think that our family of vehicles is proof that Ford never stops looking forward, designing and engineering vehicles that catch your eye, are technologically advanced, consider the environment and help keep you safe. In short, no matter what your lifestyle, you're sure to find a Ford that can help you live more of your life.



Irresistible Design:

Because everyone's idea of the perfect car is different, Ford have designed and engineered a family of exciting, athletic and sleek vehicles that look great inside and out.



Great to sit in, great to drive:

There's nothing quite like driving a Ford. That's because every Ford is built from the ground up to be exhilarating to drive, with high levels of interior comfort along with the very latest safety systems that help keep you in control and protect you and your passengers.



Sustainability:

Ford recognises that climate change is a significant global challenge. We have an ongoing commitment to caring for the environment in every facet of our business, including delivering alternative fuel solutions such as diesel and LPG.



Innovation and Technology:

Thinking smarter means a comfortable, safe and enjoyable drive every time you turn the key. Our innovative solutions to everyday tasks using the latest technology save you time and connect you to the digital world.



Built to Last:

Every Ford is built not just for today but for tomorrow as well. So, when you buy a Ford you enjoy the type of quality that you can rely on, day in day out. Not just the look and feel, but the way it performs and the way it lasts.





There's never been a Falcon quite like the remarkable Ford G Series. Our designers and engineers have created a vehicle that perfectly blends a spirited driving experience with levels of luxury and comfort you'd expect to find in expensive European marques. From engines and transmissions that deliver true sports performance and exceptional fuel efficiency, to an interior that redefines family comfort, it's a vehicle that's perfectly designed for your next getaway, wherever that may be.

G

Series







INTERIOR

Spacious luxury.

With so much room and luxury for every occupant, the Falcon interior means everyone travels first class.

You can comfortably seat five adults in the Falcon, so while the driver can luxuriate in a dynamic cockpit that boasts improved ergonomics for even greater driving pleasure. Passengers can sit back and experience new levels of luxury, including a range of interior trim options. Also, if the kids aren't on board, the Falcon's smart and flexible cabin layout can adapt to your needs, like being able to fold part or all of the rear seats down to create a generous cargo space.

Class-leading towing capacity.

Whether you're hooking up a boat or a camper trailer you've all the power and torque you need to tow up to 2300kg.*

Flexibility of a folding second row seat.

A 60/40 split fold rear seat gives you added cargo space and a more flexible interior.



Class-leading boot capacity.

Pack all the family's bags and still have room enough for the golf clubs and a few boogie boards.

Class-leading interior space.

The Falcon leads its competitors with the best headroom, hip room and shoulder room, in the front and rear.

*When fitted with an automatic transmission and Genuine Ford heavy duty towbar and load levelling kit. Towball download and rear axle limits must not be exceeded. Please refer to your Ford Dealer for advice.



G6E Turbo shown with no cost optional Cashmere Leather seat inserts.

Technology & comfort.

Falcon's athletic exterior holds much promise, and once behind the wheel that promise is well and truly kept.

All of the innovative comforts and interior finishes in the Falcon have been created with the driver in mind. The interior is an environment where technology and comfort combine to deliver an exhilarating yet sublime driving experience. And it's an experience that is as stress-free as possible, thanks to all of your creature comforts and controls being within easy reach.



Child night lighting.

Adjustable interior lighting means that you can keep an eye on the little ones while they're snoozing without disturbing a moment's rest.



G6E Turbo shown.

Automatic climate control.

When you can set the interior temperature to suit, the family travels in complete comfort regardless of what mother nature has in store.



G6E Turbo shown.

Easy-to-use technology.

The Ford Falcon has a long list of technological features that provide you with greater control and more comfort.

From the hands-free convenience of Bluetooth® mobile phone integration* with steering wheel button control, to the high resolution graphics of the optional satellite navigation system,* the technology available on-board the Falcon is not only very user friendly but helps to make every journey more enjoyable and comfortable. Plus, vehicle controls and functions are easily navigated via the Human Machine Interface (HMI).



Multi-function Display.

The easy-to-read Multi-function Display allows you to check everything at a glance, from speed and journey distance to vehicle warnings and more.



G6E Turbo shown.



Satellite navigation system with Suna™ Traffic Channel:

Guides you to your destination via a map on the large 7" colour ICC screen and voice commands integrated within the vehicle's audio system. Suna Traffic Channel provides dynamic road traffic information, keeping you informed to help avoid congestion and re-route around traffic incidents.



Bluetooth® mobile phone integration:



iPod Integration:

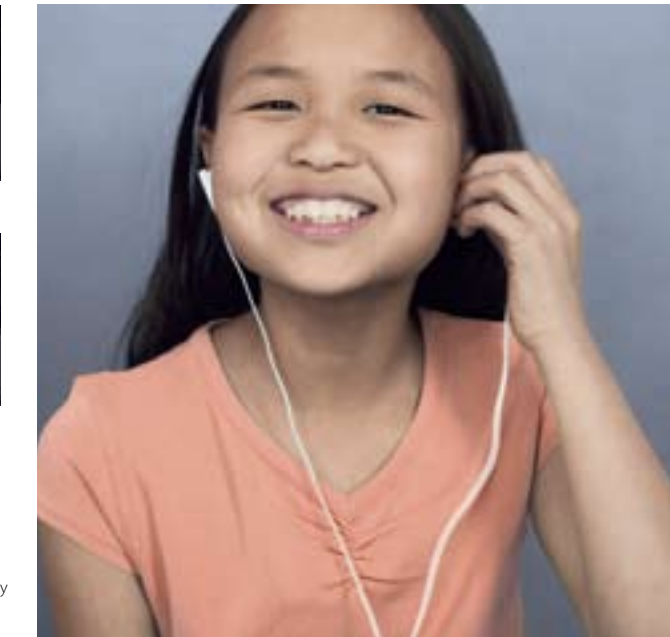
Human Machine Interface (HMI).

Incorporating the Interior Command Centre (ICC), Multi-function Display and steering wheel controls, the HMI, via two display screens, allows simple navigation of menus and operation of vehicle functions. This greatly increases safety, because you can easily see information such as speed, overspeed, audio information, trip computer, average fuel economy, average speed, travel time and more, minimising the time that your eyes are off the road. The ICC control dial makes it simple to navigate through all of the vehicle settings and make adjustments to features such as automatic climate control and audio settings.



Bluetooth® mobile phone integration:

Integrated into your vehicle's audio system, Bluetooth® allows you to enjoy safe, hands free communication while you are driving.



iPod Integration:

Allows you to access and play your favourite playlists, albums and podcasts on your iPod through the vehicle's audio system, with everything controlled through the ICC control dial or steering wheel buttons.



iPod docking location.

Because your iPod sits snugly within the centre console bin there's no clutter. Control via the ICC control dial or steering wheel buttons improves safety. Plus your iPod charges whilst connected.

Standard on G6E and G6E Turbo. Available as part of optional Technology Pack on all other models. Bluetooth® is a registered trademark of Bluetooth SIG, Inc. and is used under license. #Not available on Falcon XT. Vehicle must be fitted with Bluetooth. Ford has an arrangement to provide the Suna Traffic Channel broadcast for a minimum of 5 years from the time of vehicle manufacturer. Coverage includes Melbourne, Sydney and Brisbane metropolitan areas. Refer to www.sunatrafic.com.au for full details. **Standard on G6E Turbo. Available as part of optional Technology Pack on all other models. iPod is a trademark of Apple Inc. Please refer to ford.com.au for iPod compatibility.

Safety comes first.

Falcon's most innovative and important features are those that make every journey a safer one.

A clear view of what surrounds you, along with cleverly located features that minimise the time that your eyes are off the road help you to avoid an accident before it can happen. In the Falcon, safety starts before you even leave your driveway with a reverse camera* available that alerts you to things you can't see. You also have the peace of mind with features like the availability of a range of airbags, including curtain airbags[#], Dynamic Stability Control⁻ and a driver fatigue warning system. In the event of an accident, the Intelligent Safety System can determine which airbags to deploy in an instant.

The first Australian built vehicle to be awarded ANCAP's 5 star rating.



It's a first. The first time an Australian built vehicle has ever received all five safety stars from ANCAP. The petrol Falcon Sedan proved itself through numerous internationally recognised crash tests and was awarded the highest safety rating possible. It's not the easiest rating to get, but when it comes to your safety and that of your family, it's the most important. Plus, if you are looking for even greater fuel cost savings you'll be glad to know the 5 star ANCAP rating also applies to the ultra-economical Falcon E-Gas. What's more, Falcon's high levels of safety, quality and performance have also impressed Australia's motoring critics, with the Falcon XT picking up the Best Large Car in the prestigious Australia's Best Cars Award 2008, while the G6E Turbo won both Carsguide Car of the Year 2008 and People's Choice award 2008.



Follow-me-home lighting.

Front headlights temporarily stay on once the vehicle is locked, providing lighting to guide you home.

Intelligent Safety System.

In the event of an accident occurring, information is fed to the Advanced Restraints Module which instantly deploys the appropriate safety technologies.

Airbags.

A range of up to 6 airbags, including curtain airbags[#], are designed to enhance your protection in the event of a crash.

Reverse sensing system:

Automatically activates and provides a warning tone to assist the driver to reverse with greater accuracy.



DSC.

Dynamic Stability Control (DSC)⁻ strengthens your connection to the road and helps you avoid the problems of oversteer and understeer. DSC tracks the vehicle's movement and then works in tandem with Traction Control and ABS to help keep the vehicle under control.



Reverse camera:

Activates automatically when the car is engaged in reverse gear. With a fisheye lens capable of providing a 130° wide angle view up to 10 metres behind the car.



Driver fatigue warning.

Warns the driver to rest after driving for a continuous period.



Power adjustable pedals:

Adjust to the desired height for added driver comfort and safety.



Passenger safety cell.

Incorporating ultra-high strength steel for greater all round strength and protection, the safety cell greatly reduces intrusion into the passenger space, minimising the likelihood of occupant injuries.

*Standard on G6E and G6E Turbo. Not available on Falcon XT. Optional on all other models. Falcon XR must be specified with optional reverse sensing system. #Curtain airbags are standard on G6E and G6E Turbo and optional on all other models. †Available as part of the optional Safety Enhancement pack. Not included when specified with manual transmission. -DSC also known as Electronic Stability Control. +Standard on G Series. Optional on Falcon XT and XR.

ENGINE

A truly exhilarating drive.

With a range of powerful and fuel-efficient engines, and smooth precise transmissions, the Falcon allows you to customise the driving experience you desire.

Falcon's high-tech, state-of-the-art engines spoil you for choice and power. It all starts with the 4.0 litre I6 engine which delivers 195kW of power and 391Nm of torque. Next is the awesome 4.0 litre I6 Turbo, with a completely new turbocharger and air induction system, giving you 270kW of power and a whopping 533Nm of torque. Topping the list is the hand-assembled 290kW 5.4 litre V8. Or, if you want an engine that delivers fuel cost savings whilst still providing power, look no further than the E-Gas 4.0 litre I6 engine, which is fully integrated with the Falcon's engine management system.



Transmission.

The range of sophisticated transmissions, with a low first gear ratio and higher top gear ratio deliver a truly spirited driving experience. The greater dynamic range means livelier, energetic performance as well as more relaxed cruising and ultra-smooth gear shifts.

Falcon XR6 Turbo shown in Lightning Strike.



The 5.4 litre V8 engine delivers incredible power.

When you want to tap into some truly spine-tingling power, look no further than the awesome BOSS 290. This high-tech, state-of-the-art engine, hand-assembled by the team at Ford Performance Vehicles, features sequential multi-point electronic fuel injection and pumps out an astonishing 290kW of power and 520Nm of torque at 4750rpm. It's little wonder so much power needs its own unique 'bonnet bulge'.



4.0L E-Gas I6 engine.

The E-Gas engine can provide incredible fuel cost savings. With petrol prices rising, it's a good time to look at the alternatives. The powerful and ultra-efficient optional E-Gas engine will save you money with every kilometre you travel compared to a petrol engine. And the big news for those who want even more choice as well as reduced fuel costs is that from Quarter 4, 2009 E-Gas will be available on the XR6.

Virtual Pivot Control Link front suspension.

Designed specifically to suit Australian conditions and roads, the Virtual Pivot Control Link front suspension combines precise steering control and manoeuvrability with excellent levels of comfort.

Monotube shock absorbers.

Improves the vehicle's connection to the road as well as providing better handling.



Performance brakes.

Standard on G6E Turbo, XR6 Turbo and XR8, the larger diameter front brakes feature vented discs and deliver outstanding stopping performance.

A range of stylish wheels.

Contemporary designed wheels including the optional 19" XR 5-spoke and 19" G Series 10-spoke alloy wheels.

Control Blade Independent Rear Suspension (IRS).

One of the most advanced suspension systems on any Australian built car, for greater handling ability and ride comfort.

If you love the type of spirited performance that sends a tingle down the spine, the Falcon XR is your dream getaway car. With distinctive muscular looks and its sublime combination of breathtaking power and precise control, the XR range delivers a driving experience that can best be described as 'seriously fun'.

XR







RANGE

From true sports performance to family luxury that lets you getaway in real comfort, the Falcon range offers you so much choice.

The Falcon really does spoil you for choice. First of all, there is a range of engines and transmissions that deliver true sports performance along with exceptional fuel efficiency, while there are remarkable levels of luxury and comfort right across the range. So whether you happen to be after a truly spirited driving experience, or a vehicle that's perfectly designed for your next family getaway, the Falcon range has just the car you're looking for.



Falcon XT



Falcon XT

- 195kW I6 engine with 5-speed automatic transmission
- 16" alloy wheels*
- Single zone automatic climate control
- 4-Way power driver's seat
- Driver and front passenger airbags
- Front seat side head/thorax airbags†
- Dynamic Stability Control*
- 60/40 split fold rear seat
- Optional E-Gas available

G Series



G6

- 17" alloy wheels*
- Reverse sensing system
- Front fog lamps
- Luxury sports suspension
- Optional E-Gas available



G6E

- ZF 6-speed automatic transmission
- Dual zone automatic climate control
- Premium audio system
- Bluetooth® mobile phone integration*
- Leather seat inserts
- Reverse camera
- Curtain plus front seat side thorax airbags†
- 8-Way power adjustable driver's seat with memory
- Optional E-Gas available



G6E Turbo

- 270kW/533Nm turbocharged I6 engine
- 18" alloy wheels*
- iPod Integration™
- Rear lip spoiler
- Luxury Performance Suspension

Falcon XR



XR6

- 17" alloy wheels*
- Front fog lamps
- Sports instrument cluster
- Sports seats and sports suspension
- Optional E-Gas available from Quarter 4, 2009



XR6 Turbo

- 270kW/533Nm turbocharged I6 engine
- 18" alloy wheels*
- Performance front brakes
- Limited slip differential



XR8

- 290kW/520Nm 'Boss 290' 5.4L 4V V8 engine
- Bonnet power bulge
- 18" alloy wheels*
- Performance front brakes
- Limited slip differential

*Dynamic Stability Control also known as Electronic Stability Control. †Set of four. ‡Bluetooth® is a registered trademark of Bluetooth SIG, Inc. and is used under license. †Front seat side airbags protect front seat occupants only. ‡iPod is a trademark of Apple Inc. Visit ford.com.au for iPod compatibility.



Exterior colours.



Vixen



Serenity*¹



Winter White



Mystic*



Lightning Strike*



Nitro



Harmony*



Steel*



Ego*



Velvet



Sensation*



Seduce*



Viper*



Silhouette*



Dash

MODEL	XT	XR	G Series
EXTERIOR COLOUR			
Winter White	✓	✓	✓
Vixen	✓	✓	-
Lightning Strike*	✓	✓	✓
Harmony*	✓	-	✓
Sensation*	✓	✓	✓
Ego*	✓	✓	✓
Silhouette*	✓	✓	✓
Steel*	✓	✓	✓
Serenity* ¹	✓	-	✓
Seduce*	-	✓	✓
Viper*	-	✓	-
Mystic*	-	✓	✓
Dash	-	✓	-
Nitro	-	✓	-
Velvet	-	✓	✓

✓ - Available. -- - Not available.

*Prestige paints are optional extras that incur an additional charge of XT, G6 and XR models. ¹ Serenity available from October 2009.



G6E Turbo shown with no cost optional Cashmere Leather seat inserts.

Falcon XT and G Series interior seat trims.

With such an eye-catching range of interior seat trims and colours available you can create a feel and mood for your vehicle that's just right for you.



Metro Shadow

Domain Shadow



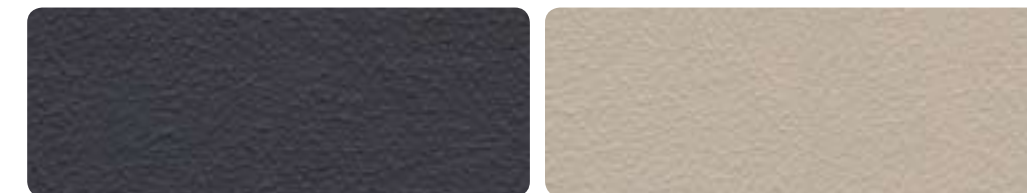
Oxford Shadow

Estate Shadow



Oxford Cashmere

Estate Cashmere



Shadow Leather seat inserts

Cashmere Leather seat inserts

MODEL	XT	G6	G6E	G6E Turbo
SEAT TRIM				
Metro and Domain Shadow	S	-	-	-
Oxford and Estate Shadow	-	S	-	-
Oxford and Estate Cashmere	-	NCO	-	-
Shadow Leather seat inserts	-	-	S	S
Cashmere Leather seat inserts	-	-	NCO	NCO

S - Standard. NCO - No cost option. - - Not available.



Falcon XR interior seat trims.

You can further enhance the sporty look and feel of your XR with a choice of striking interior seat trims and colours.



Streetwise Graphite

Attitude Shadow



Streetwise Dark Silver

Attitude Shadow



Streetwise Red

Attitude Shadow



Streetwise Blue

Attitude Shadow



Nudo Shadow Weave Leather seat inserts

Nudo Shadow Leather seat inserts

XR - EXTERIOR PAINT / SEAT TRIM COLOUR COMBINATIONS					
SEAT TRIM	Streetwise Graphite and Attitude Shadow	Streetwise Dark Silver and Attitude Shadow	Streetwise Red and Attitude Shadow	Streetwise Blue and Attitude Shadow	Nudo Shadow Leather inserts with Silky Blue Stitch
Winter White	S	NCO	NCO	NCO	O/P
Ego	S	NCO	NCO	NCO	O/P
Silhouette	S	NCO	NCO	NCO	O/P
Lightning Strike	S	NCO	NCO	NCO	O/P
Sensation	S	NCO	-	NCO	O/P
Nitro	S	NCO	-	NCO	O/P
Mystic	S	NCO	-	NCO	O/P
Vixen	S	NCO	NCO	-	O/P
Seduce	S	NCO	NCO	-	O/P
Velvet	S	NCO	NCO	-	O/P
Steel	S	NCO	-	-	O/P
Viper	S	NCO	-	-	O/P
Dash	S	NCO	-	-	O/P

S - Standard. O - Optional. - - Not available. NCO - No cost option. P - Part of optional pack.

Personalise your Falcon. The choice is yours.

You'll quickly discover that the Ford Vehicle Personalisation accessory range lets you personalise your Falcon to perfectly suit your needs, whether it's to enhance the look of your Falcon, make your journey more comfortable, entertain the family or accessorise to meet the needs of your active lifestyle. Please visit ford.com.au to view the full range of accessories available for Falcon.



Reverse sensing system. Automatically activates and provides a warning tone to assist the driver to reverse with greater accuracy.



XR waterproof seat covers. Help protect your seat fabric from dirt, sand, liquids and everyday wear and tear with these cleverly designed neoprene covers.



Ski/snowboard carrier.* Lockable with soft rubber padding to help prevent damage to skis. Accommodates up to 5 sets of skis.



Bike carrier.* Sturdy, lockable alloy carrier secures a bike in an upright position.



Garmin Nüvi 760 portable satellite navigation system.* Features a super-bright, widescreen display for easy map viewing and a built-in FM modulator which allows you to wirelessly transmit audio, including MP3s, phone calls and audio books through your Falcon's stereo.



Futuris rear headrest DVD system.* This DVD system includes two wireless headphones, and features built-in FM modulator and auxiliary input. The viewing angle is also fully adjustable to cater for children of all ages.



Cargo swing net. Keep your belongings in place. Easy to install and remove, it attaches to the sides of the cargo area to help prevent loose items moving around during transit.



Boot scuff guard. Designed to protect your Falcon's rear bumper and boot lip from scratches and scuffs when loading and unloading. Folds neatly away when not in use.



Scuff plates. Enhance the appearance of your Falcon with these stylish alloy scuff plates. Available as a set of two front scuff plates featuring either the 'Ford' or 'XR' logo.



Carpet mats.* Featuring the 'Ford', 'XR' or 'G Series' logo, these stylish mats are easy to remove and clean. Anchor points fix the driver's mat to help prevent movement.



18" x 8" XR 5-spoke alloy wheels.



19" x 8" G Series 10-spoke alloy wheels.*

OPTIONS AND ACCESSORIES AVAILABILITY BY MODEL

	Falcon XT	FALCON XR			G SERIES		
		XR6	XR6 Turbo	XR8	G6	G6E	G6E Turbo
ACCESSORIES – EXTERIOR STYLING							
17" x 8" XR 5-spoke alloy wheels - 245/45 R17 tyres ¹	-	S	A	A	-	-	-
18" x 8" XR 5-spoke alloy wheels - 245/40 R18 tyres ¹	-	O/A	S	S	-	-	-
19" x 8" G Series 10-spoke alloy wheels - 245/35 R19 tyres ²	-	-	-	-	O/A	O/A	O/A
Spoiler	A	-	-	-	A	A	A
Mullins Raker 16" alloy wheels ^{2,3,4}	A	-	-	-	-	-	-
Mullins Raker 17" alloy wheels ^{2,3,4}	-	A	-	-	A	A	-
Mullins Haze 17" alloy wheels ^{2,3,4}	-	A	-	-	A	A	-
Mullins Raker 18" alloy wheels ^{2,3,4}	-	A	A	A	A	A	A
Mullins Raker 18" chrome alloy wheels ^{2,3,4}	-	A	A	A	A	A	A
Mullins Tease 18" chrome alloy wheels ^{2,3,4}	-	A	A	A	A	A	A
Mullins Vanquish 18" alloy wheels ^{2,3,4}	-	A	A	A	A	A	A
Mullins Haze 18" alloy wheels ^{2,3,4}	-	A	A	A	A	A	A
Mullins Haze 18" chrome alloy wheels ^{2,3,4}	-	A	A	A	A	A	A
Mullins Stealth 18" chrome alloy wheels ^{2,3,4}	-	A	A	A	A	A	A
Mullins Subb 18" chrome alloy wheels ^{2,3,4}	-	A	A	A	A	A	A
Mullins Vanquish 19" alloy wheels ^{2,4}	-	A	A	A	-	-	A
Alloy wheel lock nut set	A	A	A	A	A	A	A
ACCESSORIES – EXTERIOR PROTECTION							
Bonnet protector / headlamp guards / weathershields	A	A	A	A	A	A	A
Lights on feature	A	A	A	A	A	A	A
Mudspats ⁵	A	A	A	A	A	A	A
ACCESSORIES – INTERIOR STYLING, COMFORTS AND STORAGE							
XR waterproof seat covers ⁶	-	A	A	A	-	-	-
Scuff plates	A	A	A	A	A	S	S
Carpet mats / rubber floor mats ⁷	A	A	A	A	A	A	A
Waterproof boot liner ³	A	A	A	A	A	A	A
Boot scuff guard	A	A	A	A	A	A	A
Cargo swing net	A	A	A	A	A	A	A
Dash mat	A	A	A	A	A	A	A

S - Standard. O - Optional. A - Accessory that can be added at any time. - - Not available. P - Part of optional pack.

	Falcon XT	FALCON XR			G SERIES		
		XR6	XR6 Turbo	XR8	G6	G6E	G6E Turbo
ACCESSORIES – INTERIOR STYLING, COMFORTS AND STORAGE (continued)							
Personal organiser	A	A	A	A	A	A	A
Pollen filter	A	A	A	A	A	A	A
Smoker's pack	A	A	A	A	A	A	A
ACCESSORIES – IN CAR ENTERTAINMENT AND ELECTRICAL							
Bluetooth® mobile phone integration ⁸	P/A	P/A	P/A	P/A	P/A	S	S
Child activity organiser	A	A	A	A	A	A	A
Fridge 'Day Tripper' 15L/fridge power adaptor	A	A	A	A	A	A	A
Garmin Nüvi portable satellite navigation systems ⁴	A	A	A	A	A	A	A
iPod Integration ⁹	P/A	P/A	P/A	P/A	P/A	O/A	S
Futuris rear headrest DVD system - single slot ⁴	A	A	A	A	A	A	A
Futuris rear headrest DVD system - dual slot ⁴	A	A	A	A	A	A	A
ACCESSORIES – SAFETY AND SECURITY							
Perimeter alarm	P/A	P/A	P/A	P/A	P/A	P/A	P/A
Reverse sensing system	O/A	O/A	O/A	O/A	S	S	S
ACCESSORIES – TOWING AND CARRYING							
Carry bars	A	A	A	A	A	A	A
Carry bar accessories: bike carrier, canoe/kayak carrier, ski/snowboard carrier, roof luggage box 375L ¹⁰	A	A	A	A	A	A	A
Towpack - standard 1600kg ¹¹	O/A ¹²	O/A	O/A	O/A	O/A ¹²	O/A ¹²	O/A
Towpack - heavy duty 2300kg rated incl. load levelling kit ^{11, 13}	A	A	A	A	A	A	A
Rhino-Rack sportz carry bars ⁴	A	A	A	A	A	A	A
Rhino-Rack luggage carrier - small/medium ⁴	A	A	A	A	A	A	A
Rhino-Rack roof top bike carrier ⁴	A	A	A	A	A	A	A
Rhino-Rack locking ski/snowboard carrier - 2pr / 4pr / 6pr ⁴	A	A	A	A	A	A	A
Rhino-Rack locking fishing rod carrier ⁴	A	A	A	A	A	A	A
Rhino-Rack universal holder ⁴	A	A	A	A	A	A	A
Rhino-Rack kayak/canoe carriers ⁴	A	A	A	A	A	A	A

*Attaches to Genuine Ford carry bars (sold separately). ^ This accessory is a Supplier Branded Accessory and is not manufactured or warranted by Ford. The warranty is provided by the manufacturer of the accessory. Contact your authorised Ford Dealer for details of the manufacturer's warranty applicable to this accessory. # Set of four. † When specified on G6 and G6E, the vehicle will be fitted with Luxury Performance suspension. Not available with optional E-Gas engine.

1. Wheels and tyres sold separately when fitted in Dealership. 2. Not available with optional E-Gas engine. 3. It is recommended that tyres matching original equipment specification be fitted to Mullins alloy wheels. 4. This accessory is a Supplier Branded Accessory and is not manufactured or warranted by Ford. The warranty is provided by the manufacturer of the accessory. Contact your authorised Ford Dealer for details of the manufacturer's warranty applicable to this accessory. 5. Front and rear sets sold separately. 6. Driver and front passenger seat covers sold separately. 7. Set of four. 8. Only suitable for Bluetooth® compatible phones. Bluetooth® is a registered trademark of Bluetooth SIG, Inc. and is used under license. 9. iPod is a trademark of Apple Inc. Please refer to www.ford.com.au for iPod compatibility. 10. Attaches to Genuine Ford carry bars (sold separately). 11. Subject to State and Territory regulations. 12. Standard towpack only available as Dealer fit accessory when optional E-Gas engine is specified. 13. Available on automatic transmission models only.

XR luxury pack.

The XR luxury pack lets you experience exciting levels of performance, driving pleasures and true comfort.

When you look over the long list of features, there's a very convincing argument for the XR luxury pack* option. Sports leather seat inserts and dual zone automatic climate control take comfort to a new level, while features such as the 6-disc in-dash CD player with 8 speakers, 150 watt amplifier and sub-woofer and the 7" colour display make every journey more pleasurable. And the unique 19" x 8" XR 5-spoke alloy wheels are the icing on the cake.



*Not available on XR6 with optional E-Gas from Quarter 4, 2009.



Falcon XR8 shown with optional XR luxury pack.

SPECIFICATIONS AND OPTIONS. For full specifications and options visit ford.com.au

ENGINE TYPE	4.0L DOHC DI-VCT I6	E-GAS	4.0L DOHC DI-VCT TURBO I6	BOSS 290
Applicable models	XT, XR6, G6, G6E	Optional on XT, XR6, ³¹ G6, G6E	XR6 Turbo, G6E Turbo	XR8
Maximum power (DIN)	195kW @ 6000rpm	156kW @ 4750rpm	270kW @ 5250rpm ¹	290kW @ 5750rpm ¹
Maximum torque (DIN)	391Nm @ 3250rpm	371Nm @ 2750rpm	533Nm @ 2000rpm ¹ – 4750rpm ¹	520Nm @ 4750rpm ¹
No. of valves	24	24	24	32
Fuel management system	Sequential multipoint electronic fuel injection	Venturi demand system	Sequential multipoint electronic fuel injection	Sequential multipoint electronic fuel injection
Engine management	Powertrain control module incorporating electronic throttle control			
FUEL				
Fuel tank capacity	68	93	68	68
Fuel consumption: ADR 81/02 (L/100km - rounded) ²	9.9 ³ (opt. 6-speed auto) 10.5 ⁴	14.9 ⁵	11.7 ⁶ (opt. 6-speed auto)	14.0 ⁷ (opt. 6-speed auto)
Recommended fuel	ULP or PULP E10 Compatible	LPG Only	ULP or PULP E10 Compatible	PULP E10 Compatible
SUSPENSION				
Front	Virtual Pivot Control Link front suspension			
Rear	Control Blade Independent Rear Suspension			
STEERING				
Steering type	Forward mounted power assisted rack and pinion			
Steering gear	Variable ratio			
BRAKES AND STABILITY CONTROL				
Front brakes	Standard vented disc brakes with twin piston caliper (Performance brakes on XR6T, XR8 and G6ET)			
Rear brakes	Standard solid disc brake with single piston caliper			
Anti-lock Braking System (ABS)	4-Channel ABS with Electronic Brakeforce Distribution (EBD) and Emergency Brake Assist (EBA)			
Dynamic Stability Control (DSC)	Dynamic Stability Control (DSC) incorporates Traction Control System (TCS), Emergency Brake Assist (EBA) and 4-channel ABS with Electronic Brakeforce Distribution (EBD).			
MAXIMUM BRAKED TOWING CAPACITY⁸				
	Manual		ALL SERIES	
	1200kg ⁹	-	1600kg ⁹	
Automatic	2300kg ⁹			
EXTERIOR DIMENSIONS (MM)				
	XT	XR6, XR6 TURBO & XR8		G6, G6E, G6E TURBO
Overall length	4955	4970		4967
Overall width ¹¹	1868	1868		1868
Overall height	1453	1433		1433
INTERIOR DIMENSIONS (MM)				
Front headroom	1012			
Front legroom	1073			
Front shoulder room	1523			
Front hiproom	1486			
Rear headroom	989			
Rear legroom	989			
Rear shoulder room	1518			
KERB WEIGHT (KG) (APPROXIMATE KERB WEIGHTS)				
6-Cylinder Petrol ¹²	1704			
6-Cylinder E-Gas ¹³	1754			
LUGGAGE CAPACITY (L)				
Petrol	535			
E-Gas	408			

S - Standard. O - Optional. P - Part of optional pack. NCO - No cost option. -- - Not available. A - Accessory available at any time.

¹ Power and torque figures measured using premium unleaded fuel (95 RON). ² Figures obtained from controlled tests using ADR 81/02. Actual fuel consumption and CO₂ emissions will depend on many factors including driving habits, prevailing conditions and your vehicle's equipment, condition and use. ³ Based on Falcon XT sedan with optional 6-speed automatic transmission built from April 2009 onwards. ⁴ Based on Falcon XT sedan with standard 5-speed automatic transmission. ⁵ Based on Falcon XT, G6 and G6E with optional E-Gas engine. ⁶ Based on Falcon XR6 Turbo sedan with optional 6-speed automatic transmission. ⁷ Based on Falcon XR8 sedan with optional 6-speed automatic transmission. ⁸ Subject to State and Territory regulations. ⁹ When fitted with Genuine Ford towbar. Towball download and rear axle limits must not be exceeded. Please refer to your Ford Dealer for advice. ¹⁰ When fitted with a Genuine Ford heavy duty towpack and load leveling kit. Towball download and rear axle limits must not be exceeded. Please refer to your Ford Dealer for advice. ¹¹ Excludes exterior side mirrors. ¹² Approximate kerb weight for Falcon XT fitted with standard petrol engine and 5 speed automatic transmission and includes fuel to full capacity and no occupants or luggage. ¹³ Approximate kerb weight for Falcon XT with optional E-Gas engine and 4-speed automatic transmission and includes fuel to full capacity and no occupants or luggage. ¹⁴ Set of four. ¹⁵ When specified, the vehicle will be fitted with Luxury Sports suspension. ¹⁶ Wheels and tyres sold separately. ¹⁷ Not available with optional E-Gas engine. ¹⁸ When specified on G6 and G6E, the vehicle will be fitted with Luxury Performance suspension. ¹⁹ If spare wheel, rim or tyre size differs from

	Falcon XT	FALCON XR			G SERIES		
		XR6	XR6 Turbo	XR8	G6	G6E	G6E Turbo
4.0L DOHC DI-VCT I6	S	S	-	-	S	S	-
6-speed manual transmission	-	S	-	-	-	-	-
5-speed automatic transmission with Sequential Sports Shift	S	O	-	-	S	-	-
ZF 6-speed automatic transmission with Sequential Sports Shift	O	O	-	-	O	S	-
4.0L DOHC DI-VCT TURBO I6	-	-	S	-	-	-	S
6-speed manual transmission	-	-	S	-	-	-	-
ZF 6-speed automatic transmission with Sequential Sports Shift	-	-	O	-	-	-	S
BOSS 290 5.4L DOHC 4V V8	-	-	-	S	-	-	-
6-speed manual transmission	-	-	-	S	-	-	-
ZF 6-speed automatic transmission with Sequential Sports Shift	-	-	-	O	-	-	-
E-GAS 4.0L DOHC DI-VCT I6 (DEDICATED LPG)	O	O	-	-	O	O	-
4-speed automatic transmission with Sequential Sports Shift	S	S ³¹	-	-	S	S	-
RIDE AND HANDLING							
Virtual Pivot Control Link front suspension	S	S	S	S	S	S	S
Control Blade Independent Rear Suspension (IRS)	S	-	-	-	-	-	-
Sports Control Blade Independent Rear Suspension (IRS)	-	S	S	S	-	-	-
Luxury Sports Control Blade Independent Rear Suspension (IRS)	-	-	-	-	S	S	-
Luxury Performance Control Blade Independent Rear Suspension (IRS)	-	-	-	-	-	-	S
16" x 6.5" XT 5-spoke alloy wheels - 215/60 R16 tyres ¹⁴	S	-	-	-	-	-	-
17" x 8" XT 5-spoke alloy wheels - 235/50 R17 tyres ^{14,15}	O	-	-	-	-	-	-
17" x 8" XR 5-spoke alloy wheels - 245/45 R17 tyres ¹⁴	-	S	A ¹⁶	A ¹⁶	-	-	-
18" x 8" XR 5-spoke alloy wheels - 245/40 R18 tyres ¹⁴	-	O/A ¹⁶	S	S	-	-	-
19" x 8" XR 5-spoke alloy wheels - 245/35 R19 tyres ¹⁴	-	O/P	O/P	O/P	-	-	-
17" x 8" G6 7-spoke alloy wheels - 235/50 R17 tyres ¹⁴	-	-	-	-	S	-	-
17" x 8" G6E 10-spoke alloy wheels - 235/50 R17 tyres ¹⁴	-	-	-	-	-	S	-
18" x 8" G Series 7-spoke alloy wheels - 245/40 R18 tyres ^{14,17}	-	-	-	-	O	O	S
19" x 8" G Series 10-spoke alloy wheels - 245/35 R19 tyres ^{14,17,18}	-	-	-	-	O/A	O/A	O/A ¹⁶
17" temporary spare wheel ¹⁹	S	S	S	S	S	S	S
Matching spare alloy wheel ²⁰	O	O	O	O	O	O	O
Limited slip differential	-	-	S	S	-	-	-
EXTERIOR							
Sports body kit - side skirts and rear bumper	-	S	S	S	S	S	S
Rear lip spoiler	-	-	-	-	-	-	S
Sports rear spoiler	-	S	S	S	-	-	-
Front fog lamps	-	S	S	S	S	S	S
Side mirror turn indicators	-	-	-	-	-	S	S

	Falcon XT	FALCON XR			G SERIES		
		XR6	XR6 Turbo	XR8	G6	G6E	G6E Turbo
EXTERIOR (continued)							
Towbar - 1600kg rated	O ²¹ /A	O ²¹ /A	O ²¹ /A	O ²¹ /A	O ²¹ /A	O ²¹ /A	O ²¹ /A
INSTRUMENTATION AND CONTROLS							
Human Machine Interface (HMI) with Interior Command Centre	S	S	S	S	S	S	S
Multi-function Display including distance to empty, average speed, average fuel consumption, speed warning	S	S	S	S	S	S	S
Cruise control with steering wheel mounted controls	S	S	S	S	S	S	S
Steering wheel mounted audio controls	S	S	S	S	S	S	S
Leather wrapped steering wheel	-	-	-	-	S	-	-
Sports leather wrapped steering wheel	-	S	S	S	-	S	S
COMFORT AND CONVENIENCE							
Single zone automatic climate control	S	S	S	S	S	-	-
Dual zone automatic climate control	-	P	P	P	-	S	S
Front and rear power windows	S	S	S	S	S	S	S
Automatic headlamps ON/OFF feature	S	S	S	S	S	S	S
Power adjustable pedals ²²	P	P	P	P	P	-	-
Power adjustable pedals with memory	-	-	-	-	-	P	P
Power adjustable side mirrors	S	S	S	S	S	-	-
Power adjustable side mirrors with memory and reverse auto adjust	-	-	-	-	-	S	S
Electrochromatic rear vision mirror	-	-	-	-	-	S	S
Alloy pedal covers	-	S	S	S	-	-	-
Front scuff plates	-	-	-	-	-	S	S
Overhead sunglasses console	-	-	-	-	-	S	S
Remote keyless entry	S	S	S	S	S	S	S
SEATING							
Adjustable driver's seat lumbar support	S	S	S	S	S	S	S
Adjustable passenger's seat lumbar support	-	S	S	S	S	S	S
4-way power driver's seat	S	S	S	S	S	-	-
8-way power adjustable driver's seat with 3-position memory	-	-	-	-	-	S	S
60/40 split fold rear seat back	S	S	S	S	S	S	S
Centre rear armrest with cup holders	-	S	S	S	S	S	S
AUDIO & COMMUNICATION							
Standard audio system with monochrome display, AM/FM radio, single slot CD and 4 speakers (total 112 watts)	S	S	S	S	S	-	-
Premium audio system with 7" colour display, AM/FM radio, 6-disc in-dash CD, 8 speakers plus 150 watt amplifier and sub-woofer (total 262 watts)	-	O/P	O/P	O/P	O	S	S
MP3 CD capability	S	S	S	S	S	S	S

	Falcon XT	FALCON XR			G SERIES		
		XR6	XR6 Turbo	XR8	G6	G6E	G6E Turbo
AUDIO & COMMUNICATION (continued)							
3.5mm auxiliary audio input	S	S	S	S	S	S	S
Satellite navigation system with Suna Traffic Channel ²³	-	O	O	O	O	O	O
Bluetooth [®] mobile phone integration ²⁴	P/A	P/A	P/A	P/A	P/A	S	S
iPod Integration ²⁵	P/A	P/A	P/A	P/A	P/A	O/A	S
SAFETY & SECURITY							
Intelligent Safety System	S	S	S	S	S	S	S
Driver and front passenger airbags	S	S	S	S	S	S	S
Front seat side head/thorax airbags ²⁶	S	S	S	S	S	-	-
Curtain airbags plus front seat side thorax airbags ²⁷	O/P	O/P	O/P	O/P	O/P	S	S
Pyrotechnic seatbelt buckle pretensioners ²⁶	S	S	S	S	S	S	S
Advanced restraints module	S	S	S	S	S	S	S
Crash severity sensor	S	S	S	S	S	S	S
Driver's seat position sensor	S	S	S	S	S	S	S
Beltminder™ system ²⁶	S	S	S	S	S	S	S
Dynamic Stability Control incorporating: ²⁸	S	S ³¹	S	S	S	S	S
Traction Control	S	S	S	S	S	S	S
Emergency Brake Assist (EBA)	S	S	S	S	S	S	S
Anti-lock Braking System (ABS)	S	S	S	S	S	S	S
Electronic Brakeforce Distribution (EBD)	S	S	S	S	S	S	S
Reverse sensing system	O/A	O/A	O/A	O/A	S	S	S
Reverse camera ²⁹	-	O	O	O	O	S	S
Driver fatigue warning	S	S	S	S	S	S	S
Central locking all doors	S	S	S	S	S	S	S
OPTIONAL PACKS							
Technology Pack							
iPod Integration ²⁵	O	O	O	O	O	-	-
Bluetooth [®] mobile phone integration ²⁴	O	O	O	O	O	-	-
Safety Enhancement Pack ²³							
Curtain airbags plus front seat side thorax airbags ²⁷	O	O	O	O	O	-	-
Perimeter alarm	O	O	O	O	O	-	-
Power adjustable pedals ²²	O	O	O	O	O	-	-
G6E Safety Enhancement Pack							
Perimeter alarm	-	-	-	-	-	O	O
Power adjustable pedals with memory	-	-	-	-	-	O	O
XR Luxury Pack							
Leather seat inserts, premium audio system with 7" colour display, AM/FM radio, 6-disc in-dash CD and 8 speakers plus 150 watt amplifier and sub-woofer (total 262 watts), Dual zone automatic climate control, premium sports interior appearance 19" x 8" XR 5-spoke alloy wheels - 245/35 R19 tyres ¹⁴	-	O	O	O	-	-	-
Auxiliary transmission oil cooler ³¹							
Larger remote transmission oil cooler, engine oil cooler	-	-	O	-	-	-	-

the other wheels fitted, the vehicle should be driven with caution and the standard wheel and tyre fitted as soon as possible. ²⁰ Spare wheel matches road wheels. ²¹ Towball sold separately when factory fitted. Only available as Dealer fitment for E-Gas models. ²² Power adjustable pedals not included in Safety pack when specified with manual transmission. ²³ Vehicle must be fitted with Bluetooth[®]. Ford has an arrangement to provide the Suna Traffic Channel broadcast for a minimum of 5 years from the time of vehicle manufacture. Coverage includes Melbourne, Sydney and Brisbane metropolitan areas. Refer to www.sunatrafic.com.au for full details. ²⁴ Bluetooth[®] is a registered trademark of Bluetooth SIG, Inc. and is used under licence. ²⁵ iPod is a trademark of Apple Inc. Please refer to ford.com.au for iPod compatibility. ²⁶ Driver and front passenger only. ²⁷ Front seat side thorax airbags protect front seat occupants only. ²⁸ Dynamic Stability Control also known as Electronic Stability Control. ²⁹ Falcon XR and G6 must be specified with reverse sensing system. ³⁰ Only available with optional ZF 6-speed automatic transmission. ³¹ Optional E-Gas available on XR6 from Quarter 4, 2009.



Making your ownership experience even more rewarding.

A great car is just the beginning. After you've bought your Falcon, we support you with a range of services that aim to make you one of the most satisfied vehicle owners in Australia. Speak to your Ford Dealer today about how we can help you make the most out of your vehicle ownership experience.

Ford Roadside Assistance

Our commitment to your complete satisfaction plays a major role in everything we do. That is why we provide Ford Roadside Assistance for all Ford Falcon models. Wherever and whenever you need emergency roadside assistance, help is available 24 hours a day, 365 days a year. If your vehicle breaks down and cannot be repaired, we will organise to transport your vehicle to the nearest Ford Dealer or approved service centre for repair. Ford Roadside Assistance is valid for 1 year from the vehicle's first registration.

3 year/100,000km new car warranty#

For three years or 100,000km, whichever comes first, your Ford is covered against any defects in factory materials or workmanship. This also applies to Genuine Ford Accessories you may have had fitted before you took delivery.

5 year warranty against perforation corrosion#

It's reassuring to know that the original body of your gleaming new Ford is guaranteed against perforation corrosion for the first five years of its life. If perforation corrosion occurs, we'll fix it for free.

Want to contact us?

For answers to your questions, or help with any concern, contact our Customer Relationship Centre on 13 FORD (13 3673).

Running a fleet?

Our Ford Business Centre is available to assist fleet customers with information on Ford products and services. Call 1300 13 13 30.

Visit us on the web

If you want more information on Ford or our entire product range, visit us on the Internet at ford.com.au

#Conditions and exclusions apply. See your authorised Ford Dealer for details. This brochure is designed to provide you with a general introduction to the Ford Products (including available optional equipment) referred to, and should be read in conjunction with the latest specification sheet. Because of changes in conditions and circumstances Ford* reserves the right, subject to all applicable laws, at any time, at its discretion, and without notice, to discontinue or change the features, designs, materials, colours and other specifications and the prices of their products, and to either permanently or temporarily withdraw any such products from the market without incurring any liability to any prospective purchaser or purchasers. The latest specification sheet should be referred to for information on the availability, ordering and use of optional equipment. Always consult an authorised Ford Dealer for the latest information with respect to features, specifications, prices, optional equipment and availability before deciding to place an order. *FORD MOTOR COMPANY OF AUSTRALIA LIMITED. (A.B.N. 30 004 116 223) Registered Office: 1735 Sydney Road, Campbellfield, Victoria 3061, Australia. Printed July, 2009. FML7112



G6E Turbo shown.



ford.com.au