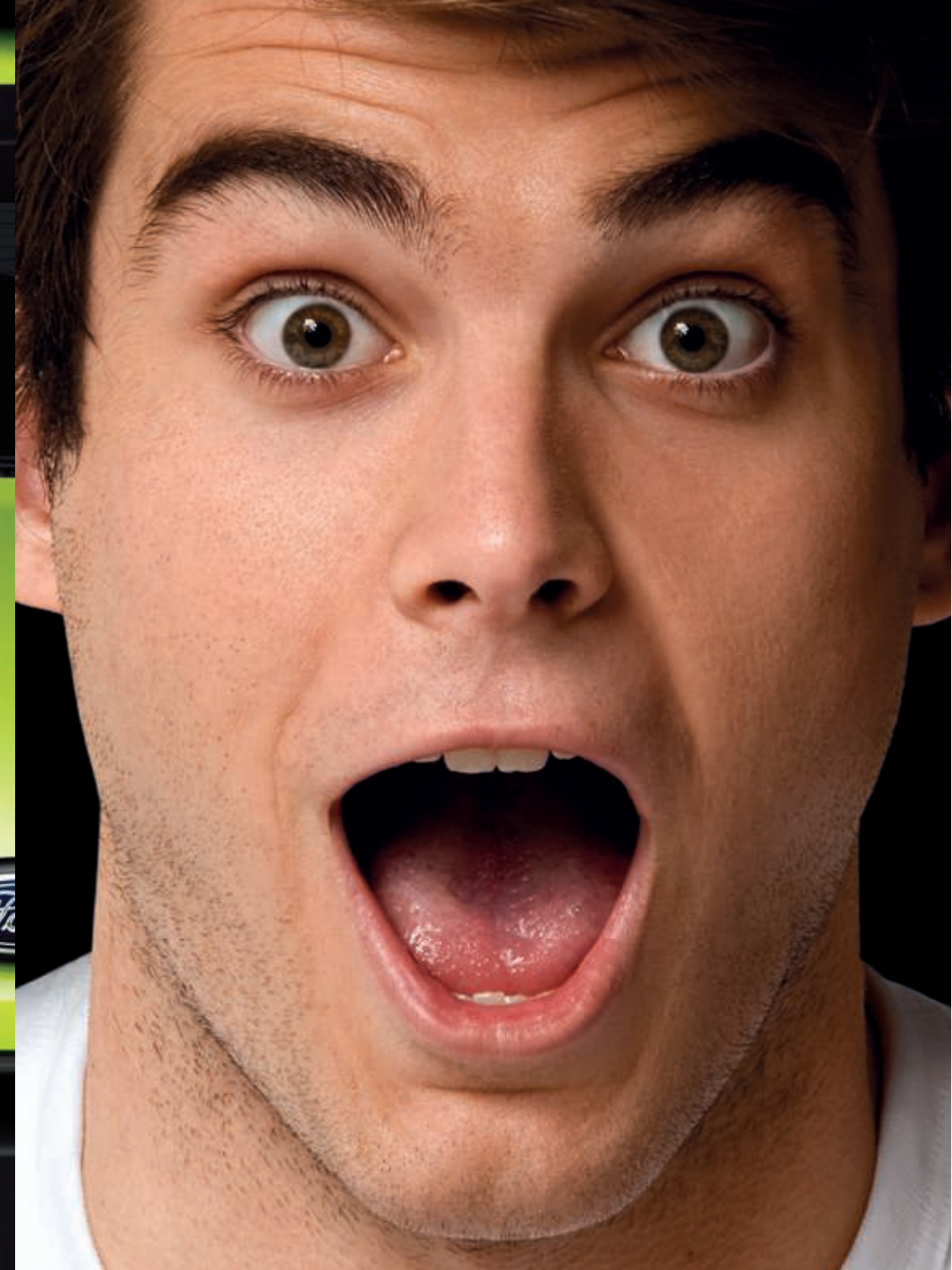




Fiesta





At Ford, with such a long and successful motoring heritage behind us, we understand that everyone's lifestyle is different. What you look for in a vehicle will be different from the next person. It could be a vehicle that allows you to fit in all the family and hit the open road for the weekend, a zippy urban car that's perfect for tackling the city traffic, or maybe you need a vehicle that allows you to play as hard as you work. We'd like to think that our family of vehicles is proof that Ford never stops looking forward, designing and engineering vehicles that catch your eye, are technologically advanced, consider the environment and keep you safe. In short, no matter what your lifestyle, you're sure to find a Ford that can help you live more of your life.



Irresistible Design:

Because everyone's idea of the perfect car is different, Ford has designed and engineered a family of exciting, athletic and sleek vehicles that look great inside and out.



Great to sit in, great to drive:

There's nothing quite like driving a Ford. That's because every Ford is built from the ground up to be exhilarating to drive, with high levels of interior comfort along with the very latest safety systems that help keep you in control and protect you and your passengers.



Sustainability:

Ford recognises that climate change is a significant global challenge. We have an ongoing commitment to caring for the environment in every facet of our business, including delivering alternative fuel solutions such as diesel and LPG.



Innovation and Technology:

Thinking smarter means a comfortable, safe and enjoyable drive every time you turn the key. Our innovative solutions to everyday tasks using the latest technology save you time and connect you to the digital world.



Built to Last:

Every Ford is built not just for today but for tomorrow as well. So, when you buy a Ford you enjoy the type of quality that you can rely on, day in day out. From the way it looks and the way it feels, to the way it performs and the way it lasts.



There's no denying it, your life moves faster than ever before. Work. Friends. Weekends away. Family. Nights out. Making up for it in the gym the next day. Life's busy. But who'd want it any other way. So when you live life in overdrive you want a car that keeps pace, right? The all new Ford Fiesta shouts "Yes!" With its bold, sculpted design and vibrant colours, it's a car that can't be ignored. And what makes every drive even more exciting is that Fiesta's tech-filled interior keeps you connected wherever the road takes you.





Fiesta Zetec 3 door shown in Squeeze with optional 17" alloy wheels and steering rack limiter.

Your kind of style.

Talk about making a good first impression. The all new Fiesta is a small car that makes a big statement. It sparks an instant desire. From its athletic stance to the sexy look of the front grille and headlamps to the sweep of the hatch. The Fiesta's precisely sculptured surfaces and dynamic lines say to you "Go on, be bold!" And the eye-catching looks are brilliantly matched with a palette of vivid colours. Add sporty optional 17" alloy wheels, a choice of 3 or 5 doors* and you've got a car that projects confidence and suits your individual style.



*Fiesta LX only available as a 5 door.

Fiesta Zetec 5 door shown in Vision.

Live your life.

Get connected. Slip inside the Fiesta and you'll feel right at home. Want to chat with friends? Easy. Play your favourite music from your iPod[^] or a USB^{*} stick? No problems. That's because behind the wheel of the Fiesta you can be connected 24/7. Adjust your music volume with a simple click using the steering wheel mounted audio controls. Keep in touch with friends using the hands-free Bluetooth[®] and Voice Control system.[#] So wherever you're heading, you'll never miss an opportunity. Fiesta keeps you in control and connected every step of the way.



iPod connectivity.*

Take your library of tunes wherever the road takes you. You can connect an iPod directly into Fiesta's audio system. What's more, a USB port on the Fiesta Zetec allows you to integrate your player so that you're able to control your iPod using the on-board audio controls, including those located on the steering wheel.



USB port*

Simply pop your USB stick into the port and your MP3 music files can be played and controlled through the Fiesta's sound system.



Bluetooth[®] connectivity with Voice Control.[#]

Why miss a phone call just because you're driving? With Bluetooth voice-activated connectivity you can keep in touch with your friends without your hands ever leaving the steering wheel. And the ability to change radio stations is at your 'voice command' too.

[^]Requires connection cable, sold separately. iPod is a trademark of Apple Inc. ^{*}USB input facility available only on Fiesta Zetec. [#]Not available on Fiesta CL. The Bluetooth[®] word mark and logos are registered trademarks owned by Bluetooth SIG, Inc. and any use of such marks is under license.



Fiesta Zetec shown with Dotts Syracuse interior trim.

Fresh design.

Sculptured design-as-art. That's the Fiesta's interior. The sexy surfaces, smooth finishes and the intuitive mobile phone-inspired centre console design are edgy and fresh. You'll also be impressed by the vibrant seat trims and colours. So regardless of whether you're simply zipping through traffic or taking on a road trip for a weekend away, it's an interior that means you can live life to the max. And share too – as well as ample storage for your personal items, there's plenty of space to load in your friends and their gear.



Vibrant modern seat trims. Dotts Soho interior shown.



Stylish air conditioning dials.



Easy to use cruise control* buttons on the steering wheel.
*Not available on Fiesta CL.



Elegant lines with satin finish on door trims.



Fiesta Zetec shown with Dotts Soho interior trim.



Feel alive...

to drive.

Exciting. Fun. Responsive. With its razor sharp handling, driving a Fiesta is all these things, and more. You'll discover that whizzing through city traffic is a breeze, and parking in tight spaces is no drama. The zippy 1.6L engine and racy 5-speed manual transmission delivers responsive acceleration, while the optional 4-speed automatic with a 1.4L engine* is no slouch either. And cruise control^ will help make weekend escapes even easier. In fact, you sense the Fiesta was designed and engineered to ensure every drive gives you a real buzz and makes you feel alive.

*1.4L auto not available on Fiesta Zetec 3 door. ^Not available on Fiesta CL.



Fiesta Zetec shown with Dotts Syracuse interior trim.

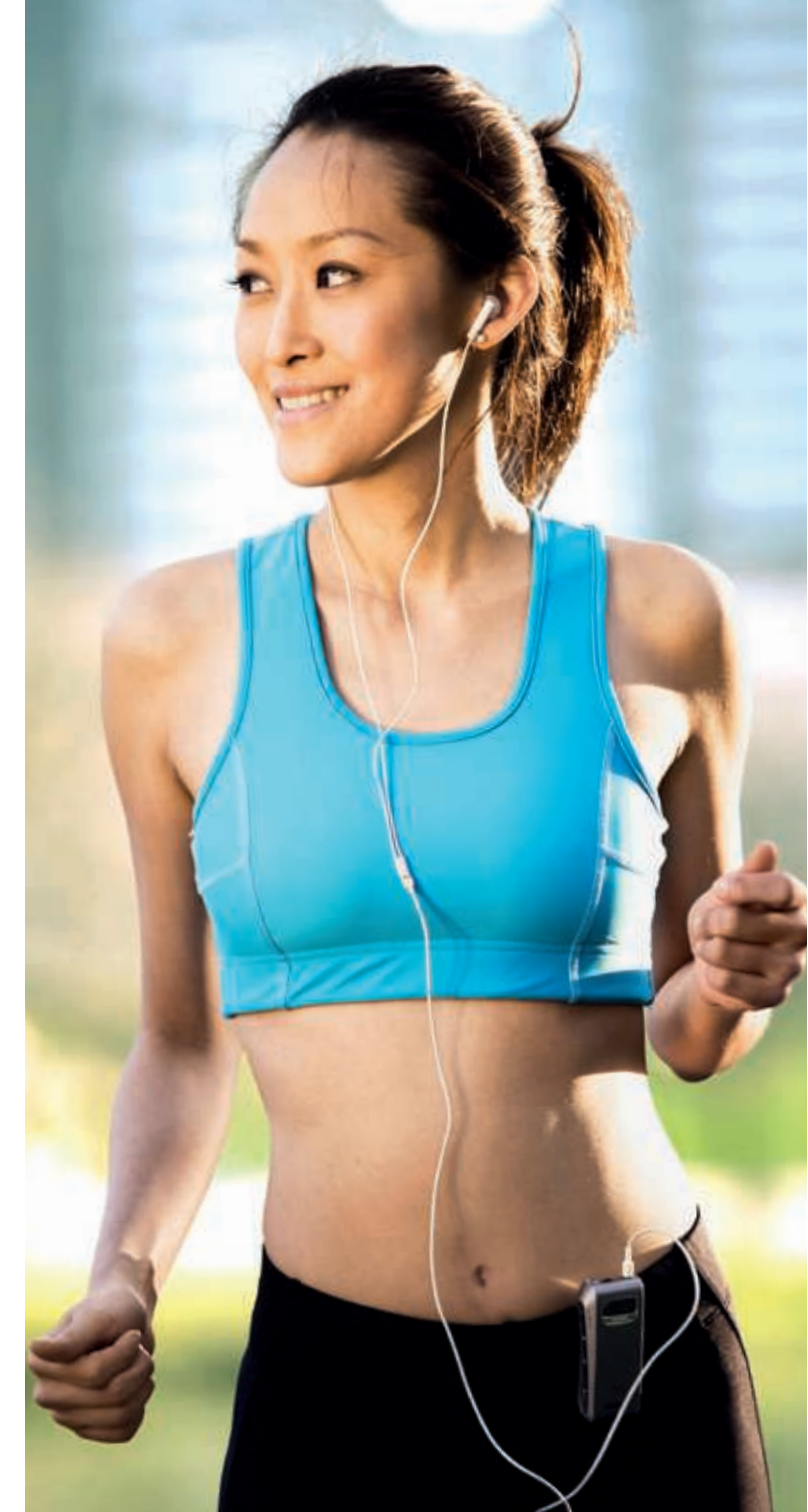
The city awaits...





No worries.

When you're busy living life the last thing you need to worry about is your car, right? That's the beauty of driving the new Ford Fiesta. Because it's engineered and built in Germany you can sense the quality of the build, attention to detail and the inherent reliability every time you get behind the wheel. And besides giving you stress-free driving, Fiesta's great fuel economy keeps more money in your wallet and these days that's a real bonus.



Safety.

Just because you're in a small car doesn't mean you should be any less safe. That's why you'll be glad to know the Ford Fiesta packs in just as many safety features as your average family sedan. Besides an army of airbags, Fiesta is equipped with an impressive list of safety features to help you avoid an accident.



1 Driver and front passenger airbags.
It's reassuring to know driver and front passenger airbags are standard across the Fiesta range.

2 Head and thorax side front airbags.
Standard on Fiesta Zetec for added driver and front passenger protection. Optional as part of a safety pack for Fiesta CL and LX models.

3 Driver's knee airbag.
Fiesta Zetec includes the added benefit of a driver's knee airbag. Optional as part of a safety pack for Fiesta CL and LX models.

4 ABS with EBD.
The Anti-lock Braking System (ABS) with Electronic Brakeforce Distribution (EBD) help ensure a safer drive. Standard on every Fiesta.

5 Dynamic Stability Control with Traction Control and Emergency Brake Assist.
Dynamic Stability Control (DSC) strengthens your connection to the road and helps you avoid the problems of oversteer and understeer. DSC tracks the vehicle's movement and then works in tandem with Traction Control and ABS to help keep the vehicle under control. Standard on Fiesta Zetec and available as part of an optional safety pack on Fiesta CL and LX models.

6 Safety cell.
For greater all round strength and protection, the Fiesta's high-strength steel passenger safety cell greatly reduces intrusion into the passenger space, minimising the likelihood of occupant injuries.

Fiesta vehicle range.

In addition to bold, sleek looks, a truly high-tech interior and sharp, zippy performance, the new Ford Fiesta range gives you loads of options and accessories. A choice of 3 models. 1.4L auto or 1.6L manual. 3 or 5 doors. Features like capless refuelling and power front windows. Plus a vibrant colour range that'll really catch your eye. No matter what your lifestyle, the Fiesta range has a vehicle that's just perfect for you.



Fiesta CL 3 Door

- Engine: 1.6L with 5 speed manual, or 1.4L with 4 speed auto
- CD audio system with input facility for iPod[®] / MP3 player
- Steering wheel mounted audio controls
- Driver and front passenger airbags
- ABS and air conditioning
- Capless refuelling



Fiesta CL 5 Door

- Engine: 1.6L with 5 speed manual, or 1.4L with 4 speed auto
- CD audio system with input facility for iPod[®] / MP3 player
- Steering wheel mounted audio controls
- Driver and front passenger airbags
- ABS and air conditioning
- Capless refuelling



Fiesta LX 5 Door

Includes features found on Fiesta CL, plus:

- Bluetooth[®] and Voice Control system^{*}
- Leather wrapped steering wheel
- Cruise control
- Power rear windows[#]
- 15" alloy wheels^{**}



Fiesta Zetec 3 Door

- Engine: 1.6L with 5 speed manual only
- Includes features found on Fiesta LX, plus:
- Head and thorax side airbags^{^^} and driver's knee airbag
- Dynamic Stability Control and Traction Control
- USB port (for iPod[®] integration and MP3 files on memory sticks)
- Sports body kit with large spoiler and side skirts
- 16" alloy wheels^{**}



Fiesta Zetec 5 Door

- Includes features found on Fiesta LX, plus:
- Head and thorax side airbags^{^^} and driver's knee airbag
- Dynamic Stability Control and Traction Control
- USB port (for iPod[®] integration and MP3 files on memory sticks)
- Sports body kit with large spoiler (no side skirts)
- 16" alloy wheels^{**}

[^]Requires connection cable, sold separately. Please refer to ford.com.au for iPod compatibility. iPod is a trademark of Apple Inc. ^{*}The Bluetooth[®] wordmark and logos are registered trademarks owned by Bluetooth SIG, Inc. and any use of such marks is under license. [#]Power rear windows only available on 5 door models. ^{**}Set of 4. ^{^^}For driver and front passenger only.

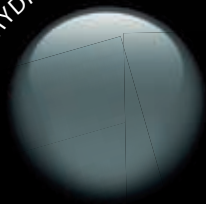
Colour your world.

Choose from a vibrant range of exterior colours and interior trims.

FROZEN WHITE



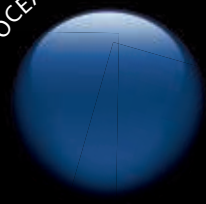
HYDRO*



MORELLO*



OCEAN*



PANTHER BLACK*



CL and LX



Ecrin

CL and LX



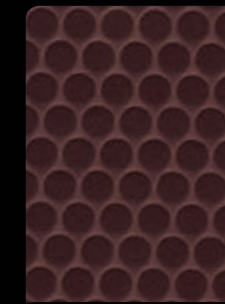
Perception

Zetec



Dotts Syracuse

Zetec



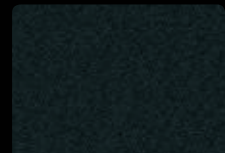
Dotts Soho



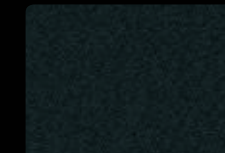
Mondo Max



Mondo Max



Trudie



Trudie

EXTERIOR COLOUR AND INTERIOR SEAT TRIM COMBINATIONS

	CL	LX	Zetec
Sea Grey	Ecrin / Mondo Max	Ecrin / Mondo Max	Dotts Syracuse / Trudie
Frozen White	Perception / Mondo Max	Perception / Mondo Max	Dotts Soho / Trudie
Colorado Red	Ecrin / Mondo Max	Ecrin / Mondo Max	Dotts Syracuse / Trudie
Hydro	Ecrin / Mondo Max	Ecrin / Mondo Max	Dotts Syracuse / Trudie
Moon dust Silver	Ecrin / Mondo Max	Ecrin / Mondo Max	Dotts Syracuse / Trudie
Morello	Ecrin / Mondo Max	Ecrin / Mondo Max	Dotts Soho / Trudie
Squeeze	Ecrin / Mondo Max	Ecrin / Mondo Max	Dotts Syracuse / Trudie
Ocean	Perception / Mondo Max	Perception / Mondo Max	Dotts Syracuse / Trudie
Cedar	Ecrin / Mondo Max	Ecrin / Mondo Max	Dotts Soho / Trudie
Panther Black	Perception / Mondo Max	Perception / Mondo Max	Dotts Soho / Trudie
Vision	Ecrin / Mondo Max	Ecrin / Mondo Max	Dotts Syracuse / Trudie

*Optional prestige colour. Fiesta Zetec shown for illustrative purposes.

Personalise your Fiesta. The choice is yours.

You'll quickly discover that the Ford Vehicle Personalisation accessory range lets you personalise your Fiesta to perfectly suit your needs, whether it's to enhance the look of your Fiesta, make your journey more comfortable, or accessorise to meet the needs of your active lifestyle. For full details and to view the complete Fiesta accessory range visit ford.com.au



Fiesta Zetec shown with optional 17" alloy wheels, steering rack limiter and roof carry bars.



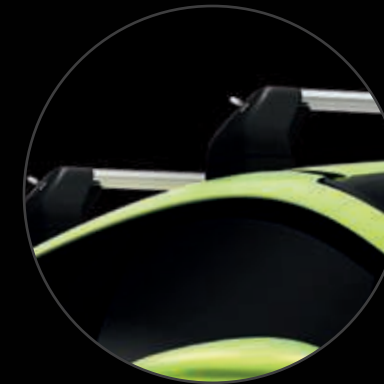
iPod integration. This connector cable integrates your iPod¹¹ or MP3 player with the Fiesta Zetec audio system.



Large rear spoiler. Create a statement with this aggressively designed spoiler to make your Fiesta stand out from the crowd.



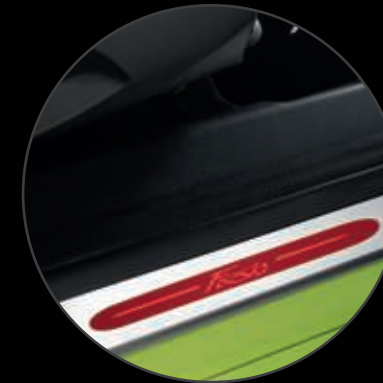
17" alloy wheels. Designed in Europe, these distinctive alloy wheels give your Fiesta an even sportier edge.



Carry bars. Made from strong aluminium, these lockable carry bars help make carrying extra cargo a breeze.



Illuminated gear knob. This leather trimmed gear lever knob will enhance the interior of your Fiesta with its sporty feel.



Illuminated scuff plates. Complements Fiesta's interior illumination and helps protect against scratches and scuffs.



Alloy sports pedals. Add extra flair to your Fiesta interior with these alloy sports pedals.

ACCESSORIES AVAILABILITY BY MODEL

	CL	LX	Zetec
EXTERIOR STYLING			
17" x 7" 5-spoke alloy wheels ^{1,2}	A	A	A
Steering rack limiter	A	A	A
Large rear spoiler	A	A	S
Mullins - NOS 15" alloy wheels ^{1,3,4}	A	A	A
Mullins - NOS 16" alloy wheels ^{1,3,4}	A	A	A
EXTERIOR PROTECTION			
Bonnet protector	A	A	A
Headlamp guards	A	A	A
Mudspats ⁵	A	A	-
Weathershields - bubble (front) ⁶	A	A	A
Weathershields - slimline (front) ⁶	A	A	A
INTERIOR STYLING			
Illuminated gear lever knob ^{7,8}	A	A	A
Front door scuff plate inserts - stainless steel	A	A	S
Front door scuff plate inserts - illuminated ⁸	A	A	A
Alloy sports pedals ⁷	A	A	A
INTERIOR COMFORTS AND STORAGE			
Rubber anti-slip mat ⁹	A	A	A
Foldable luggage compartment mat ⁹	A	A	A
Boot scuff guard ⁹	A	A	A
Premium velour carpet mats ⁵	A	A	A
Standard carpet mats	A	A	A
Rubber floor mats ⁵	A	A	A
Personal organiser	A	A	A
IN CAR ELECTRICAL AND ENTERTAINMENT			
Child activity organiser	A	A	A
Bluetooth [®] phone kit ¹⁰	A	S	S
iPod integration ¹¹	-	-	A
Garmin Nuvi 260 portable satellite navigation system ³	A	A	A
Garmin Nuvi 260W portable satellite navigation system ³	A	A	A
Garmin Nuvi 310 portable satellite navigation system ³	A	A	A
Garmin Nuvi 760 portable satellite navigation system ³	A	A	A
TOWING AND CARRYING			
Carry bars ⁸	A	A	A
Towpack ^{12, 13, 14}	A	A	-

S - Standard. A - Accessory that can be added at any time.

1. Wheels and tyres sold separately. 2. Requires additional steering rack limiter (sold separately) and Dynamic Stability Control to be fitted. 3. This accessory is a Supplier Branded Accessory and is not manufactured or warranted by Ford. The warranty is provided by the manufacturer of the accessory. 4. It is recommended that tyres matching original equipment specification be fitted to Mullins alloy wheels. 5. Front and rear sets sold separately. 6. Available on 5 door models only. 7. Available on manual transmission vehicles only. 8. Available March 2009. 9. Rubber anti-slip mat, foldable luggage compartment mat and boot scuff guard cannot be fitted in conjunction with each other. 10. The Bluetooth[®] word mark and logos are registered trademarks owned by Bluetooth SIG, Inc. and any use of such marks is under license. 11. iPod is a trademark of Apple Inc. 12. Available February 2009. 13. Subject to State and Territory regulations. Towpack includes towbar, towball and trailer wiring kit. 14. Towpack not compatible with body styling kit fitted to Fiesta Zetec.

Specifications and options.

For full specifications and options visit ford.com.au



CL - 15" steel wheel



LX - 15" alloy wheel



Zetec - 16" alloy wheel



Optional 17" alloy wheel*



Fiesta Zetec centre console

ENGINE	MANUAL	AUTO	
Engine	Duratec 1.6 Litre Ti-VCT 4 cylinder DOHC 16V	Duratec 1.4 Litre 4 cylinder DOHC 16V	
Maximum power output ISO ¹	88kW @ 6000rpm	71kW @ 5750rpm	
Maximum torque ISO ¹	152Nm @ 4050rpm	125Nm @ 4200rpm	
Fuel system	Electronic multipoint fuel injection	Electronic multipoint fuel injection	
FUEL			
Fuel ²	91-98RON	91-98RON	
Consumption - NEDC combined (Cold) L/100km ³	6.1	6.9	
CO ₂ emissions (g/km) ³	143	164	
Fuel tank capacity (litres)	43	43	
Capless refuelling	S	S	
SUSPENSION			
Front	MacPherson type front suspension. Struts with twin tube shock absorbers.		
Rear	Twist-beam rear suspension. Coil springs. Mono-tube shock absorber modules.		
LUGGAGE CAPACITY (L)	3 door models	5 door models	
Seats upright	281	281	
EXTERIOR DIMENSIONS (mm)			
Overall length	3950	3950	
Overall width ⁴	1722	1722	
INTERIOR DIMENSIONS (mm)			
Front headroom	991	991	
Front legroom	1111	1111	
Rear legroom	823	823	
PERFORMANCE	CL	LX	Zetec
Duratec 1.6L 4 cylinder with 5-speed manual	S	S	S
Duratec 1.4L 4 cylinder with 4-speed automatic	O	O	O ⁵
RIDE AND HANDLING			
Front (ventilated) disc brakes and rear drum brakes	S	S	S
15" Steel wheels and full cover with 195/50 R15 tyres (set of 4)	S	-	-
15" 5-spoke alloy wheels with 195/50 R15 tyres (set of 4)	-	S	-
16" 7-spoke alloy wheels with 195/45 R16 tyres (set of 4)	-	-	S
14" Temporary spare wheel with 175/65 R14 tyre ⁶	S	S	S
17" 5-spoke alloy wheels ⁷	A	A	A
INTERIOR			
Air-conditioning with pollen filter	S	S	S
Centre console with 2 cup holders, storage area and MP3 player tray	S	S	S
Driver and passenger vanity mirror	S	S	S
Front variable intermittent windscreen wipers with anti-drip feature	S	S	S
Rear windscreen wiper with reverse gear wipe feature	S	S	S
Cruise control	-	S	S
Power front windows with driver one touch up/down	S	S	S

S - Standard. O - Options that can be ordered before a vehicle is manufactured. P - Part of optional pack. A - Accessories that can be added at any time.

1. All performance data measured using 95RON fuel. 2. For optimum performance use fuel of 95RON or higher. 3. These figures are obtained from controlled tests conducted to Australian Design Rule 81/01 which requires the use of 95RON fuel and are provided to assist you in comparing the fuel consumption of Fiesta with other vehicles. Note the actual fuel consumption you achieve will depend on many factors including your driving habits, the prevailing conditions and your vehicle's equipment, conditions and use. 4. Excludes side mirrors. 5. Only available on Zetec 5 door. 6. If the spare wheel rim or tyre size differs from the other wheels fitted, the vehicle should be driven with caution and the standard wheel



Stylishly designed, easy to read instrument cluster.



Fiesta's sexy lines are enhanced with a rear spoiler.



A roomy boot and 60/40 folding rear seats comfortably hold your weekend gear.

Fiesta Zetec shown

INTERIOR (CONT)	CL	LX	Zetec
Power rear windows (5 door models only)	-	S	S
3-spoke leather wrapped steering wheel	-	S	S
Load compartment lighting	S	S	S
Aesthetic interior lighting and map reading lights	-	-	S
SEATING			
Cloth trim	S	S	-
Sports cloth trim	-	-	S
Folding 60/40 rear seats	S	S	S
Passenger seat back map pocket	S	S	S
Driver seat back map pocket	-	-	S
AUDIO			
Single CD with MP3 capability, AM/FM radio, 4 speakers	S	-	-
Single CD with MP3 capability, AM/FM radio, 6 speakers and large display screen	-	S	S
Bluetooth® hands free with Voice Control system ⁸	-	S	S
Steering wheel mounted audio controls	S	S	S
3.5mm auxiliary audio input ⁹	S	S	S
USB input facility for music files and MP3 player integration ⁹	-	-	S
EXTERIOR			
Power/heated exterior side mirrors with turn indicators	S	S	S
Sports bodykit with large rear spoiler	-	-	S ¹⁰
'Follow-me-home' lighting	S	S	S
Twin chamber halogen reflector headlamps	S	S	-
Halogen projector headlamps	-	-	S
Front fog lamps with chrome surround	-	-	S
Single rear fog lamp	S	S	S
SAFETY AND SECURITY			
Driver and front passenger airbags	S	S	S
Front seat head and thorax side airbags ¹¹	p ¹²	p ¹²	S
Driver knee airbag	p ¹²	p ¹²	S
Anti-lock Braking System (ABS) with Emergency Brakeforce Distribution (EBD)	S	S	S
Dynamic Stability Control (DSC) ¹³ with Traction Control and Emergency Brake Assist (EBA)	p ¹²	p ¹²	S
Remote central locking including double dead locking with two flip keys	S	S	S
Perimeter alarm	-	-	S
OPTIONS			
Safety Pack			
Front seat head and thorax side airbags ¹¹			
Driver knee airbag	O	O	-
Dynamic Stability Control (DSC) ¹³ with Traction Control and Emergency Brake Assist (EBA)			

and tyre be fitted as soon as possible. 7. Wheels and tyres sold separately. Requires additional steering rack limiter (sold separately) and Dynamic Stability Control to be fitted. 8. The Bluetooth® word mark and logos are registered trademarks owned by Bluetooth SIG, Inc. and any use of such marks is under license. Please refer to ford.com.au for mobile phone compatibility. 9. Connection cables sold separately. Please refer to ford.com.au for iPod compatibility. iPod is a trademark of Apple Inc. 10. Includes side skirts on Zetec 3 door only. 11. Driver and front passenger only. 12. Available as part of optional safety pack. 13. Dynamic Stability Control is also known as Electronic Stability Control.

Making your ownership experience even more rewarding.

A great car is just the beginning. After you've bought your new Fiesta, we support you with a wide range of services that aim to make you one of the most satisfied vehicle owners in Australia.

Insurance

Ford offers a full suite of insurance products; designed to make it easier to keep your Fiesta on the road. Along with traditional motor vehicle insurance, we also offer various loan and equity protection products to both private and business buyers. Ford Solutions™ insurance products are underwritten by Allianz Australia Insurance Limited.

Considering Finance?

Ford Credit provides a range of finance driven solutions for private, business and fleet customers; making it easier, and more affordable than you may expect, to drive a new Fiesta. Having financed more than one million vehicles in Australia since 1971, Ford Credit has the products and experience to meet your needs. For more information, ask at your authorised Ford Dealer or visit us at fordcredit.com.au

Ford Solutions.™

The Ford Solutions plans are designed to enhance your vehicle ownership experience. Major benefits for you include optimising vehicle performance and providing peace-of-mind against the cost of repairs. Terms, conditions and eligibility criteria apply. See your participating Ford Dealer for further information on the plans that best suit your needs.

3 year/100,000km new car warranty.*

For three years or 100,000km, whichever comes first, your Ford is covered against any defects in factory materials or workmanship. This also applies to Genuine Ford Accessories you may have had fitted before you took delivery.

5 year warranty against perforation corrosion!

It's reassuring to know that the original body of your gleaming new Ford is guaranteed against perforation corrosion for the first five years of its life. If perforation corrosion occurs, we'll fix it for free.

Want to contact us?

For answers to your questions, or help with any concern, contact our Customer Relationship Centre on 13 FORD (13 3673).

Running a fleet?

Our Ford Business Centre is available to assist fleet customers with information on Ford products and services. Call 1300 13 13 30.

Visit us on the web.

If you want more information on Ford or our entire product range, visit us on the Internet at ford.com.au

#Conditions and exclusions apply. See your authorised Ford Dealer for details.

This brochure is designed to provide you with a general introduction to the Ford products (including available optional equipment) referred to, and should be read in conjunction with the latest specification sheet. Because of changes in conditions and circumstances Ford* reserves the right, subject to all applicable laws, at any time, at its discretion, and without notice, to discontinue or change the features, designs, materials, colours and other specifications and the prices of their products, and to either permanently or temporarily withdraw any such products from the market without incurring any liability to any prospective purchaser or purchasers. The latest specification sheet should be referred to for information on the availability, ordering and use of optional equipment. Always consult an authorised Ford Dealer for the latest information with respect to features, specifications, prices, optional equipment and availability before deciding to place an order. *FORD MOTOR COMPANY OF AUSTRALIA LIMITED. (A.B.N. 30 004 116 223) Registered Office: 1735 Sydney Road, Campbellfield, Victoria 3061, Australia. Printed October 2008. FML4933eb



Fiesta Zetec shown in Colorado Red.



ford.com.au