

BANG NOISE HEARD AND/OR BUMP FELT FROM FRONT OF VEHICLE DURING A QUICK 1-2 AND/OR 2-3 SHIFT—UNDER MODERATE TO AGGRESSIVE ACCELERATION

TSB 13-6-10

FORD:
2013 Focus

ISSUE

Some 2013 Focus ST vehicles may exhibit a bang noise and/or bump felt from front of vehicle during a quick 1-2 and/or 2-3 shift under moderate to aggressive acceleration.

ACTION

Perform the Service Procedure steps to correct the condition.

SERVICE PROCEDURE

1. Raise the vehicle on a hoist. Refer to Workshop Manual (WSM), Section 100-02.
2. Remove the lower air deflector by removing the three (3) fasteners. (Figure 1)
3. Remove the engine compartment splash shield by removing the eight (8) fasteners. (Figure 1)
4. Lower the vehicle.
5. Remove battery and battery tray. Refer to WSM, Section 414-01.
6. Position hydraulic floor jack with a wood block under transmission and raise only enough to support weight of transmission.
 - a. Do not attempt to lift the transmission or damage will occur.

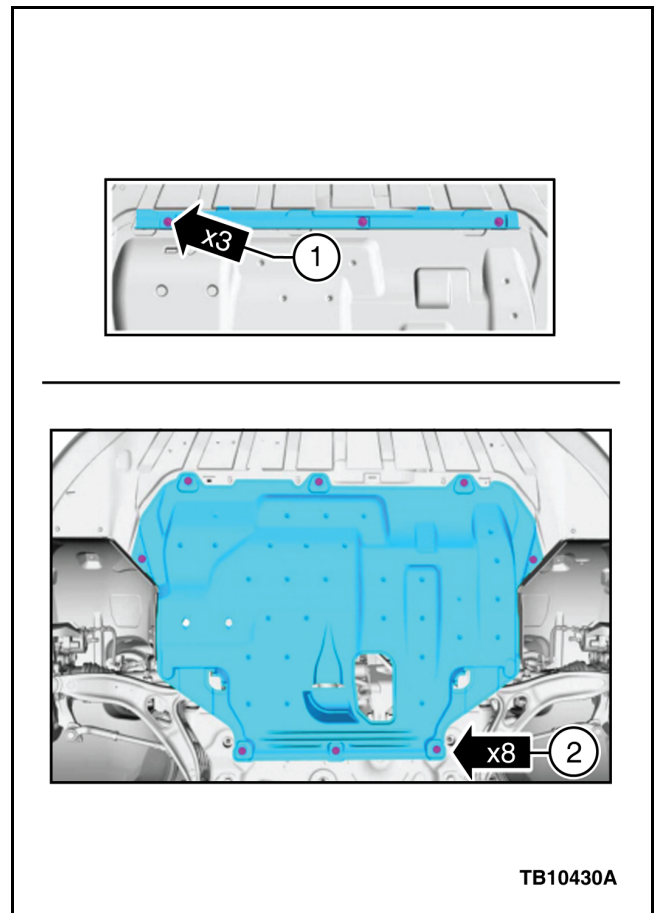


Figure 1 - Article 13-6-10

7. Remove battery tray reinforcement by removing the four (4) fasteners. (Figure 2)

NOTE: The information in Technical Service Bulletins is intended for use by trained, professional technicians with the knowledge, tools, and equipment to do the job properly and safely. It informs these technicians of conditions that may occur on some vehicles, or provides information that could assist in proper vehicle service. The procedures should not be performed by "do-it-yourselfers". Do not assume that a condition described affects your car or truck. Contact a Ford or Lincoln dealership to determine whether the Bulletin applies to your vehicle. Warranty Policy and Extended Service Plan documentation determine Warranty and/or Extended Service Plan coverage unless stated otherwise in the TSB article. The information in this Technical Service Bulletin (TSB) was current at the time of printing. Ford Motor Company reserves the right to supersede this information with updates. The most recent information is available through Ford Motor Company's on-line technical resources.

TSB 13-6-10 (Continued)

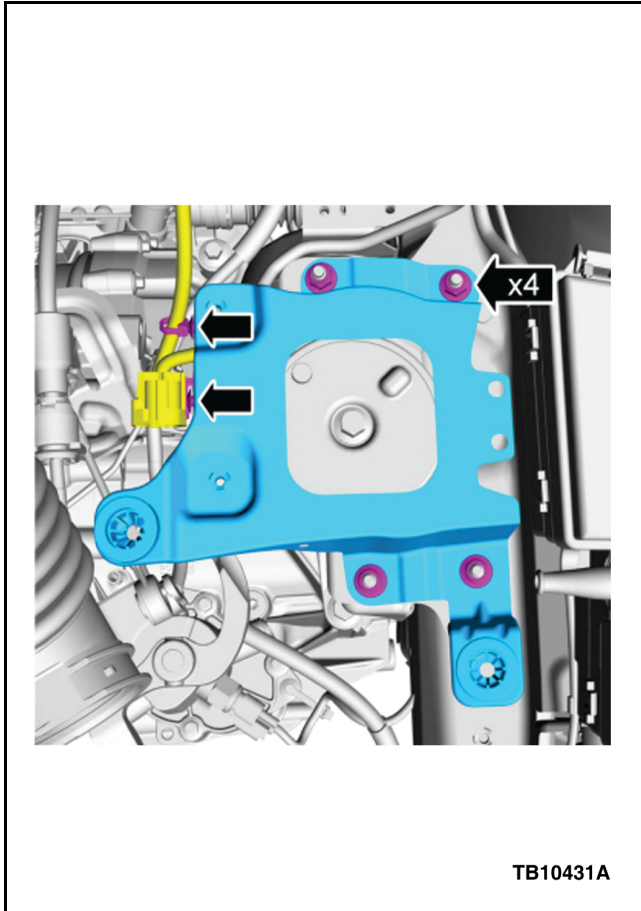


Figure 2 - Article 13-6-10

8. Remove and discard the center fastener securing the transmission support insulator and remove the insulator.
9. Install revised service transmission support insulator and torque new center fastener to 148 N•m (109 lb-ft).
10. Replace the clutch slave cylinder hydraulic tube with revised service part. (Figure 3 - Item 12)
11. Bleed the clutch system. Refer to WSM, Section 308-02, general procedures, 6 speed manual transmissions.
12. Remove floor jack.
13. Install battery tray reinforcement with the four (4) fasteners and torque to 48 N•m (35 lb-ft). (Figure 2)
14. Install battery and battery tray, refer to WSM, Section 414-01.
15. Replace engine mount with revised service part. Refer to WSM, Section 303-01B

- a. If the three (3) engine mount studs loosen during engine mount removal, torque the three (3) engine mount studs to 17.5 N•m (13 lb-ft)

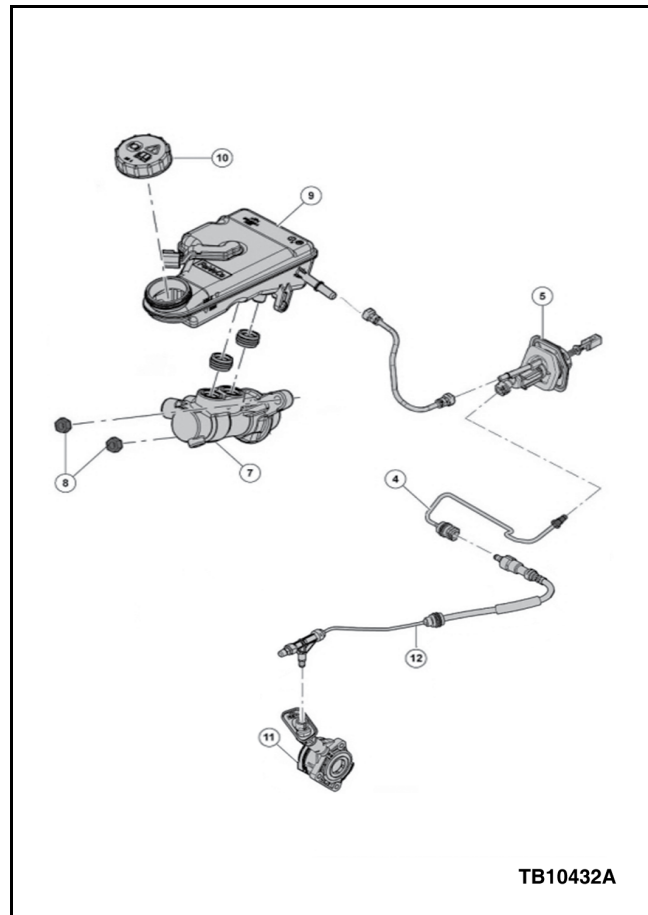


Figure 3 - Article 13-6-10

16. Replace roll restrictor with revised service part. Refer to WSM, Section 308-03.
 - a. When installing the engine compartment splash shield and lower air deflector, do not over tighten the fasteners or threads may be damaged.

PART NUMBER	PART NAME
CM5Z-6068-A	Roll Restrictor
DV6Z-7A512-B	Clutch Line PTL
DV6Z-6038-B	Engine Mount
DV6Z-6068-A	Transmission Mount
W500361-S442	Bolt - Transmission Mount
W716238-S442	Bolt - Roll Restrictor
PM-20	Motorcraft® DOT 4 LV High Performance Motor Vehicle Brake Fluid

WARRANTY STATUS: Eligible Under Provisions Of
New Vehicle Limited
Warranty Coverage
Warranty/ESP coverage
limits/policies/prior approvals
are not altered by a TSB.
Warranty/ESP coverage
limits are determined by the
identified causal part and
verified using the OASIS
part coverage tool.

OPERATION	DESCRIPTION	TIME
130610A	2013 Focus ST 2.0L GTDI: Replace Mounts And Clutch Hydraulic Cylinder Tube Following The Service Procedure (Do Not Use With Any Other Labor Operations)	1.8 Hrs

DEALER CODING

BASIC PART NO.	CONDITION CODE
6068	42