



**Quality**

We design and build your Ford to feel as good after many years of service as it did the day you picked it up. And to drive just as beautifully, too.



**Sustainability**

Using advanced technology, we're committed to creating vehicles with improved fuel economy, reduced CO<sub>2</sub> emissions and a lower overall cost of ownership.



**Safety**

Ford's Intelligent Protection System uses sophisticated technology designed to help prevent an accident and, if one should happen, to help protect you.



**Smart**

Vehicles with smart, intuitive technologies designed to connect you to your world and many clever solutions that make life a little easier.

Speak to your Ford Dealer today about how we can help you make the most out of your vehicle ownership experience.

**3 year/100,000km new car warranty\***

For three years or 100,000km, whichever comes first, your Ford is covered against any defects in factory materials or workmanship. This also applies to Genuine Ford Accessories you may have had fitted before you took delivery.

**5 year warranty against perforation corrosion\***

It's reassuring to know that the original body of your gleaming new Ford is guaranteed against perforation corrosion for the first five years of its life. If perforation corrosion occurs, we'll fix it for free.

**myFord Warranties and Insurance.**

When you first turn the key of your brand new Ford you want to do so without a care in the world. Our range of myFord products gives you that extra peace of mind. For more information about myFord Warranties and Insurance, visit your participating Ford Dealer for further details on the plans that best suit your needs. Terms, conditions and eligibility criteria apply.

**12 months/15,000km service intervals.**

Under normal driving conditions service intervals are 12 months or 15,000km, whichever occurs first.

**Running a fleet?**

Our Ford Fleet team is available to assist fleet customers with information on Ford products and services. Call 1300 13 13 30 or email [askfleet@ford.com](mailto:askfleet@ford.com)

**Want to contact us?**

For answers to your questions, or help with any concern, contact our Customer Relationship Centre on 13 FORD (13 3673) or email [customers@fordcrc.com.au](mailto:customers@fordcrc.com.au)

**Visit us on the web.**

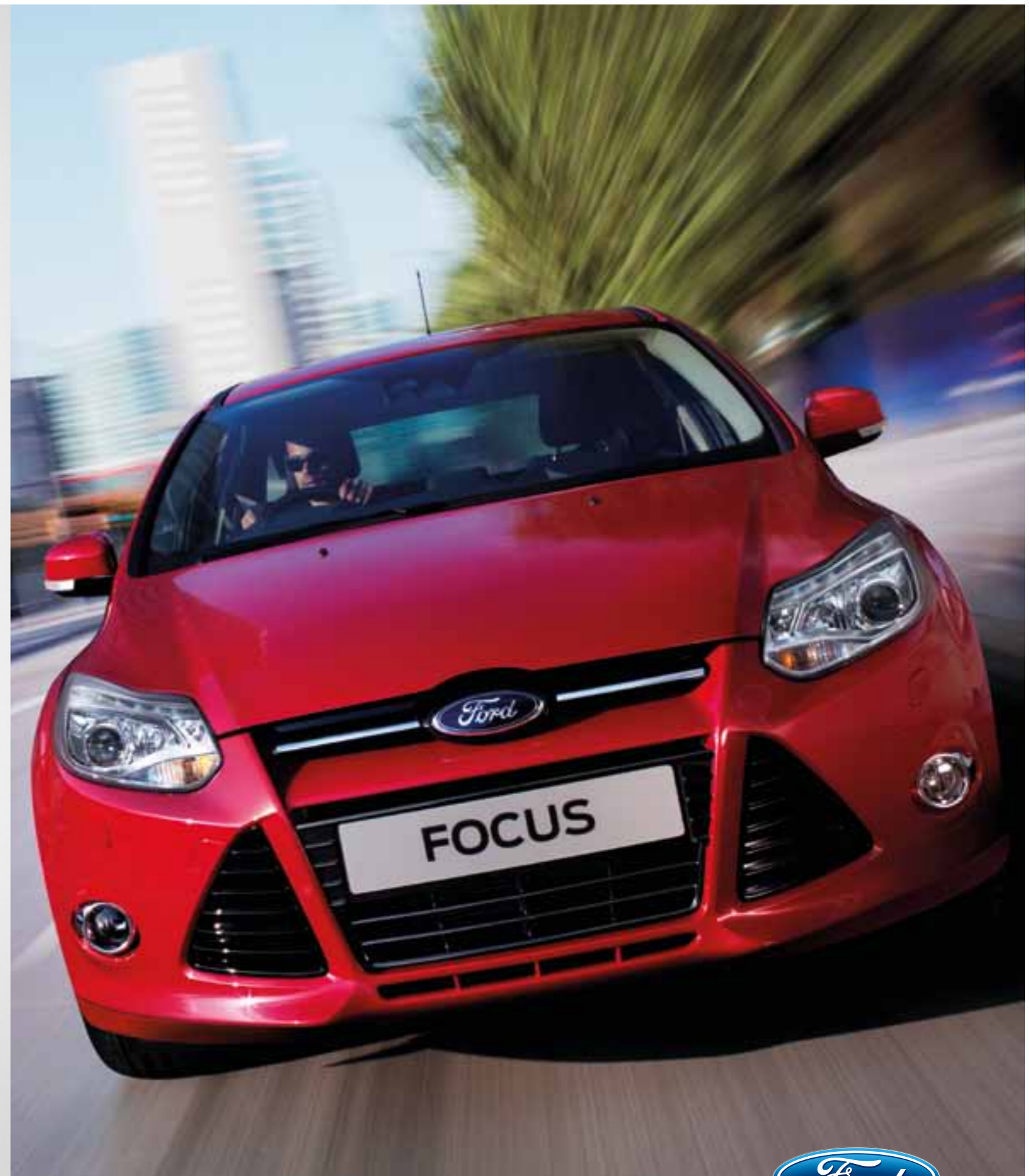
If you want more information on Ford or our entire product range, visit us at [ford.com.au](http://ford.com.au)

**myFord Capped Price Servicing.**

Your new Ford vehicle now gives you access to myFord Capped Price Servicing, which means it makes even more sense to have your Ford looked after by the people who know your Ford back to front, inside and out. With myFord Capped Price Servicing, Ford will publish the maximum price you will pay for a standard A or B logbook service at participating Authorised Ford Dealers for all vehicles built from 2007 up to 6 years or 105,000 kilometres, whichever comes first.

In addition, when vehicles are serviced under myFord Capped Price Servicing, Retail and Small Business Customers will also receive 12 months myFord Standard Roadside Assistance (RRP \$90).

For more details visit your local Ford Dealer or visit [www.ford.com.au/myfordcps](http://www.ford.com.au/myfordcps) for full terms and conditions.



\*Conditions and exclusions apply. For more information visit [ford.com.au/newvehiclewarranties](http://ford.com.au/newvehiclewarranties)

This brochure details specifications and features of the LW Focus MkII available from August 2012. Please consult your Ford Dealer for the most recent specifications and availability information.

This brochure is designed to provide you with a general introduction to the Ford Products (including available optional equipment) referred to, and should be read in conjunction with the latest specification sheet. Because of changes in conditions and circumstances Ford\* reserves the right, subject to all applicable laws, at any time, at its discretion, and without notice, to discontinue or change the features, designs, materials, colours and other specifications and the prices of its products, and to either permanently or temporarily withdraw any such products from the market without incurring any liability to any prospective purchaser or purchasers. The latest specification sheet should be referred to for information on the availability, ordering and use of optional equipment. Always consult an authorised Ford Dealer for the latest information with respect to features, specifications, prices, optional equipment and availability before deciding to place an order.

\*FORD MOTOR COMPANY OF AUSTRALIA LIMITED. (A.B.N. 30 004 116 223) Registered Office: 1735 Sydney Road, Campbellfield, Victoria 3061, Australia. Printed September, 2012. FOCUS0066. LW Focus MkII Brochure. FRD01541



Go Further

[ford.com.au](http://ford.com.au)



Go Further



## Start more than a car

Representing the next level of Ford Kinetic Design, this is a car that makes its presence known. Whichever way you look at it, the Focus is impossible to ignore.



Focus Titanium Hatch with optional Sports Executive Pack shown in Candy Red.



## Start an adventure

Get ready for the most addictive driving experience, with all the agility and precision you could wish for. It's so much fun to drive, you'll always be craving for more.



Focus Titanium Sedan with optional Sports Executive Pack shown in Ingot Silver.



### Start comparing

You're not average, so why should your car be one-size-fits-all? Whether you're after thrilling performance, impressive technology or the utmost in comfort, there's a Focus for you, whatever turns you on.



European model shown.

This Focus consumer brochure contains images of the European Focus ST model. Some minor specification differences between the European and Australian models may exist.



**SYNC**  
POWERED BY **Microsoft**



#### SYNC™ your music<sup>‡</sup>

Play your iPod\*, MP3 player or USB device hands-free using SYNC™. This intelligent voice control technology integrates your music player with the Focus audio system recognising detailed commands such as artist, album and track name.

#### Smarter thinking inside and out

Employing our most advanced technology, the Focus makes each and every journey easier and more enjoyable.

#### Ford SYNC™ connectivity system<sup>‡</sup>

Introducing Ford SYNC™, an advanced software platform that helps keep you entertained and in touch. Developed with Microsoft®, this connectivity system enhances your Bluetooth® and Voice Control experience, letting you use more detailed voice commands when making calls or playing music from your digital media player. And with features like automatic phonebook downloading, SYNC™ puts you in total control without you taking your hands off the wheel or your eyes off the road.



#### Your journey's all mapped out

Wherever you go, you won't get lost unless you want to, thanks to intuitive satellite navigation by Bosch. The 5" full-colour display screen is integrated seamlessly with a premium 9-speaker Sony audio system, so whether you want to hear your next turn or your favourite track, Focus has got you covered.\*



#### Reverse camera<sup>^</sup>

Keep a clear eye on the road behind you with a wide angle camera that automatically activates when reverse gear is selected.



Focus Titanium Sedan with optional Sports Executive Pack shown in Ingot Silver.

#### Active Park Assist<sup>†</sup>

Helps you parallel park quickly and easily without ever touching the steering wheel. When the system is activated, ultrasonic sensors measure and identify a large enough parking spot. Once you stop, the system is designed to take over and steer the car safely into the space.

#Bluetooth® is a registered trademark of Bluetooth SIG Inc., and is used under licence. \*iPod is a trademark of Apple Inc. Requires connection cable, sold separately. ‡For phone and media player compatibility please visit [www.fordsync.com](http://www.fordsync.com) †Only available on Titanium models. ^Satellite navigation, premium Sony 9-speaker audio system, 5" full-colour display and reverse camera only available on Sport, Titanium and ST models.





#### Steering that adapts to its environment

The Focus' sophisticated new Electric Power-Assisted Steering (EPAS)\* achieves a balance that's just not possible with conventional power steering systems. At parking speeds, full power is delivered for feather-light manoeuvring. Once you're on the move, it steadily weights up to just the right extent for optimum feel and control.

\*Not available on the 1.6L Sigma Ti-VCT with 6-speed PowerShift® automatic transmission. Hydraulic Power Assisted Steering standard on Ambiente with 6-speed PowerShift® automatic transmission.

#### An addictive driving experience

The Focus combines our latest engine and transmission technology with a dynamic chassis and precise steering. It reminds you how driving can be such a pleasure.



XR6 Turbo shown in Silhouette.

Focus Titanium Hatch with optional Sports Executive Pack shown in Candy Red.

#### Ford PowerShift® transmission\*

Using the very latest gearbox technology, Ford PowerShift® delivers the perfect combination between the convenience of an automatic and the performance normally associated with a manual. This new 6-speed automatic transmission cleverly selects the next appropriate gear at precisely the right moment for lightning-fast gear changes, with no disruption to the flow of power. It also has a manual mode that allows you to switch gears at the flick of the shifter, but without the need for a clutch pedal.

\*Optional on Ambiente, Trend and Sport hatch models. 6-speed PowerShift® automatic transmission standard on Titanium models and Ambiente, Trend and Sport sedan variants.

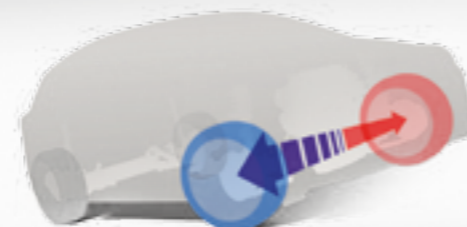


#### Control Blade independent rear suspension

For a smoother ride and more precise handling, this advanced rear suspension system allows each wheel to independently move both upwards and backwards over bumps in the road.

#### Torque Vectoring Control

Designed to improve traction, roadholding and agility when cornering by continuously optimising the engine torque distributed to each front wheel to match the amount of grip each wheel has available. The result is a more rewarding driving experience.



#### Smart technologies drive performance and fuel economy

Ford's smart engine technologies are at the heart of the Focus engine range. The 2.0 litre gasoline direct injection (GDI) features precise, pressurised fuel delivery, while the 2.0L Duratorq TDCi Diesel engine and the economical 1.6L Ti-VCT engine both blend performance with exceptional fuel economy. Additionally, Active Grille Shutters can further improve fuel economy by automatically closing the front grille vents to make the Focus more aerodynamic.





### Cockpit driving position

Driving the Focus, you could easily believe you were in control of a sports car; the low seating position and high beltline mean it fits you like a glove.



### Designed around you

Your every connection with the Focus – from driver-orientated cockpit to the responsiveness of the steering, throttle and brakes, and the feel of the switches and controls – makes you feel part of the car.



### Ford Power Start Button\*

Start the car without ever holding the key. Just keep the key fob with you in your pocket or bag.

### Auto wipers & Auto headlights\*

The Focus packs in an array of high-tech safety features, like windscreen wipers that are activated automatically when it begins to rain and lights that are activated when the external light becomes too dim.

### Dual-zone climate control\*

The innovative comforts in the Focus have you in mind – technology and comfort combine to deliver a sublime driving experience. Set the interior temperature to suit your wishes and travel in complete comfort.



### A true driver's car

Slide in behind the wheel and you instantly appreciate the many hours that were spent developing the cockpit and seating position of the Focus. As a result, everything is within easy reach, giving you a real feeling of control and a driving experience that is truly mind-blowing.

\*Only available on Titanium and ST models. \*Standard on Sport, Titanium and ST models and optional as part of the Convenience Pack available for Trend models. ^Only available on Sport, Titanium and ST models.





### Focus on safety

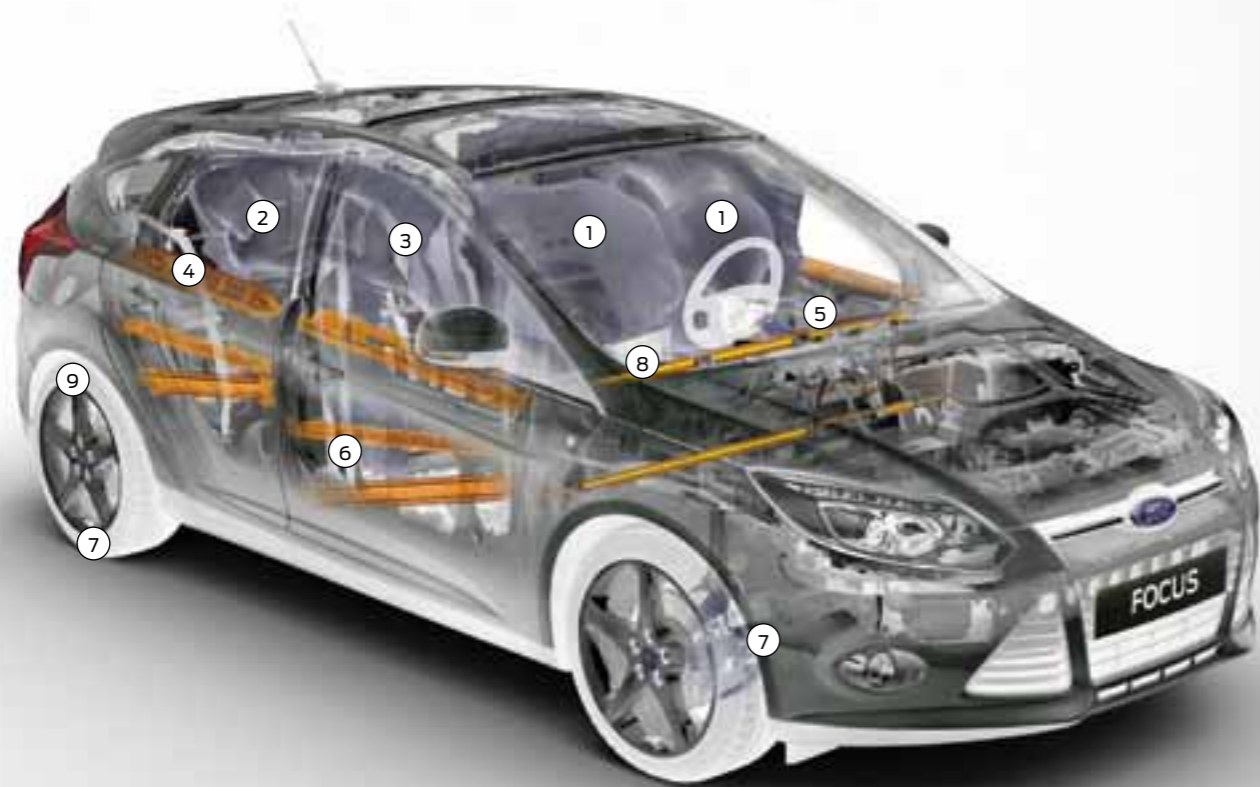
Being able to enjoy all the thrills, exhilaration and technology of the Focus means nothing without safety. It's why the Focus is engineered so that every element plays a part in helping keep you and your passengers safe.

### Intelligent Protection System (IPS)

The Focus' advanced Intelligent Protection System (IPS) uses a range of sophisticated technologies that are designed to help keep you protected, including an ultra-high strength steel safety cage, an anti-lock braking system (ABS) with electronic brake-force distribution (EBD), and front and side curtain airbags.

#### The Ford Focus IPS includes:

1. Driver and passenger individual single stage front airbags and side thorax airbags
2. Side curtain airbags for front and rear seats
3. Front seatbelts fitted with pretensioners and load limiters
4. 3-point seatbelts fitted to all three rear seats
5. Collapsible steering column and pedals for optimised protection of driver's legs and feet
6. Robust computer-optimised body structure with ultra-rigid safety cell and crumple zones
7. Anti-lock brakes (ABS) with electronic brake-force distribution (EBD) and Emergency Brake Assist (EBA)
8. Emergency Brake Warning
9. Dynamic Stability Control (DSC)



#### Australia's highest safety rating

In addition to a long list of standard features, you have added peace of mind knowing the Focus has a 5-star ANCAP safety rating, a feature that is standard in every model.

Overseas model shown.

### Proven quality

The attention to detail which has been lavished on the Focus is immediately evident, from the exterior finish to the quality of the interior. Ford has engineered every single component for dependability and strength with one objective clearly in mind; quality that's built to last.



### Tested to extremes

The Focus was pushed through the extremes of real-world weather from -40°C to +80°C and tested over and over again.



### Quality you can feel

Not just great to drive, it's great to sit in too, thanks to a leading-edge interior design, high-quality materials and first-class fit and finish.

### Dynamic Stability Control (DSC)

If sensors detect oversteer or understeer, the onboard computer can modulate engine power and apply the brakes to individual wheels to keep them under control and heading in the right direction.



### Obsessively driven

During its development, we test-drove the Focus the equivalent of 88 times around the globe. It's a car you can rely on, right down to the smallest ball bearing.



### 300,000 door shuts

We opened and closed the doors, bonnet and tailgate over 300,000 times in real-world conditions to help ensure they will never let you down.







## Ambiente

| The Ambiente is a stylish introduction to the Focus range. |



### Ambiente standard features

- 1.6L Sigma Ti-VCT petrol with 5-speed manual transmission
- 5-star ANCAP safety rating
- Power adjustable side mirrors with side indicators
- Control Blade independent rear suspension
- Torque Vectoring Control
- Body coloured rear spoiler (hatch only)
- Body coloured rear spoiler (hatch only)
- 16" x 6" steel wheels (set of 4)
- Ford Easy-Fuel capless refuelling system with locking fuel flap
- Air conditioning
- Power central locking
- 60/40 split rear seats
- Power driver and passenger front and rear windows
- Ford SYNC™ connectivity system with Bluetooth® Hands-Free Phone and Voice Control
- USB port and iPod integration~
- Ford Intelligent Protection System (IPS)
- Dynamic Stability Control (DSC) with Traction Control (TC) and Emergency Brake Assist (EBA)
- Active Grille Shutter

#Bluetooth® is a registered trademark of Bluetooth SIG Inc., and is used under licence. ~iPod is a trademark of Apple Inc. Requires connection cable, sold separately.

### Torque Vectoring Control

Designed to improve traction and agility when cornering, Torque Vectoring Control gives an added edge to every driving experience.



### Australia's highest safety rating

In addition to a long list of standard features, you have added peace of mind knowing the Focus has a 5-star ANCAP safety rating, a feature that is standard in every model.



### EcoMode

To help achieve optimum fuel economy, Ford EcoMode uses smart software to continually assess your speed, gear shifting and driving style to provide useful advice and driving tips.



### USB port and iPod integration~

Connect your iPod™ mobile digital device, MP3 player or USB stick and operate it via your Ford audio system.



### Ford SYNC™ connectivity system

The Ford SYNC™ connectivity system uses Bluetooth® and voice recognition technology to give you enhanced control over a number of in car features and functions such as music and hands-free calling.



### Ford Easy-Fuel capless refuelling system

Only accepts the correct type of fuel-filler nozzle for your car.







## Trend

The Focus Trend effortlessly merges stylish design with innovation and convenience.



### Additional to Ambiente

- 2.0L GDI petrol engine with 5-speed manual transmission\*
- 16" x 7" alloy wheels (set of four)
- Front fog lights
- Rear parking sensors
- Cruise control with speed limiter

### Optional Convenience Pack

- Auto wipers
- Auto headlights
- Follow-me-home lighting
- Auto dimming rear view mirror

\*5-speed manual transmission not available on Trend sedan.

### 16" alloy wheels

The striking design of these distinctive alloy wheels give the Focus Trend a sharp, urban edge.



### Cruise control with speed limiter

The freedom of the open road is more enjoyable with cruise control while the limiter function helps to stay within the speed limits.



### Parking distance sensors

Automatically activates and provides an audible warning tone to help you safely judge parking distances and to reverse more accurately.



### Front fog lights

In combination with the front grille, the low slung fog lights give the Focus Trend a striking sporty look.



### 2.0L GDI petrol engine

Injecting highly pressurised fuel directly into the combustion chamber, the GDI engine delivers impressive fuel efficiency and superb driving performance.



### Optional Convenience Pack

Drive, park and get home safer with the auto headlights, auto wipers and follow-me-home lighting available in the Optional Convenience Pack.







## Sport

The Focus' dynamic character really comes alive in Sport, with an even greater emphasis placed on driving enjoyment.



### Additional to Trend<sup>^</sup>

- 17" x 7" alloy wheels (set of four)
- Large rear spoiler (hatch only)
- Sports-tuned suspension
- V-shape sports-style front seats
- Electrically-operated and heated door mirrors with side indicators
- Auto wipers
- Sony radio/CD with 5" multi-functional display
- Satellite navigation
- Leather 4-spoke steering wheel
- Dual-zone climate control
- Ambient interior LED lighting (red)
- Reverse camera

<sup>^</sup>Reverse parking sensors not available on Sport model until September build vehicles. #Bluetooth® is a registered trademark of Bluetooth SIG Inc., and is used under licence.

### 17" alloy wheels

The design of these striking alloy wheels enhance the sleek lines of the Focus Sport.



### Sony radio/CD with 5" multi-functional display

Features satellite navigation, MP3 compatibility, 9 speakers, USB interface, Bluetooth<sup>®</sup> enabled Voice Control System and audio streaming (with compatible mobile phones).



### Sports-tuned suspension

The sports-tuned suspension further connects you to the road and delivers an exhilarating driving experience.



### Reverse camera

Keep a clear eye on the road behind you with a wide angle camera that automatically activates when reverse gear is selected.



### Dual-zone climate control

Set the interior temperature to suit your wishes and travel in complete comfort.



### Auto wipers

Front windscreen wipers that are activated automatically when it begins to rain.







## Titanium

The very latest innovative technology and contemporary luxury make Titanium the ultimate Focus.



### Additional to Sport

- 6-Speed PowerShift® automatic transmission as standard
- 18" 5-spoke alloy wheels (set of 4)
- Active Park Assist automated parking system
- Leather interior trim
- Ford Power Start Button
- Ford KeyFree system
- 6-way power adjustable driver's seat
- Power adjustable auto folding heated mirrors with side indicator.

### Optional Sports Executive Pack

- Adaptive Cruise Control
- Power tilt/slide sunroof
- Active City Stop
- Bi-Xenon HID headlamps with static cornering lights, auto headlamp leveling and headlamp jet wash

\*Active City Stop is available as part of the Optional Sports Executive Pack.

### 18" alloy wheels

5-spoke alloys add a touch of class to the top-of-the-range Focus Titanium.



### Leather trim

The leather trim seats give the Focus Titanium interior a contemporary, dynamic look and feel.



### Active Park Assist

Take the hassle out of parking. Now you can park quickly and easily without ever touching the wheel.



### Ford Power Start Button

With a simple push of the Power Start Button the Focus Titanium's engine comes to life.



### Ford KeyFree System

The Ford KeyFree System allows you to lock and unlock the doors and boot, and start the engine, without having to get the keys out of a pocket or handbag.



### Active City Stop\*

Helping reduce the risk of a collision in slow moving traffic, Active City Stop automatically applies the brakes when a low speed collision threat is detected.







## Focus ST

Everything about the Focus ST is engineered to excite. From the powerful engine to the sleek muscular design, it's 100% car, 0% apology.



### ST Key Features

#### Mechanical

- 2.0L GTDi 4-cylinder EcoBoost
- 6-speed manual transmission
- Active Grille Shutter
- Sports suspension ST tuned
- Torque Vectoring Control
- Electric Power-Assisted-Steering (EPAS)

#### Exterior

- 18" alloy wheels with deflation detection system
- Dual centre exhaust
- Bi-Xenon HID headlamps with headlamp jet wash
- LED daytime running lamps and static cornering lights
- Ford Easy-Fuel capless refuelling system
- Auto wipers
- Goodyear Eagle F1 Asymmetric 2 tyres

#### Interior

- Ford SYNC™ - Sony Audio System with 5" TFT display, branded integrated control panel, external AUX and USB connection for external music devices, remote audio and MFD controls, 9-speakers
- Recaro® partial leather sport seats
- Sports alloy pedal covers
- Reverse camera
- Satellite navigation
- Dual-zone climate control
- Smart key with Ford Power Start Button
- Ambient interior LED lighting

European model shown.

#### Racing seats

With excellent shoulder and torso support, the world-famous RECARO® seats are ergonomically designed for the high-performance driver.

#### Power without compromise

A turbocharged direct-injection 2.0L EcoBoost engine gives you the best of power and responsiveness – without sacrificing fuel efficiency.

#### Performance at your fingertips

Stay on top of your game with this striking instrument console, featuring red needle pointers and sport gauges monitoring turbo boost, oil pressure and oil temperature.

#### Conquer corners.

ST's unique sports suspension system with Torque Vectoring gives you flawless cornering. 18" alloys with high-performance front and rear disc brakes ensure added control.

#### Sizzling hot design

Turn heads wherever you go in your stylish Focus ST. Think integrated roof spoiler, no-nonsense dual-pipe exhaust and bold trapezoidal grille with blood-red ST badging.





**Make it yours**

Choosing the colour and trim for your Focus is an opportunity to make it just exactly that – yours!

Focus range colours and trims



Frozen White

Winning Blue\*\*

Ingot Silver\*

Lunar Sky\*

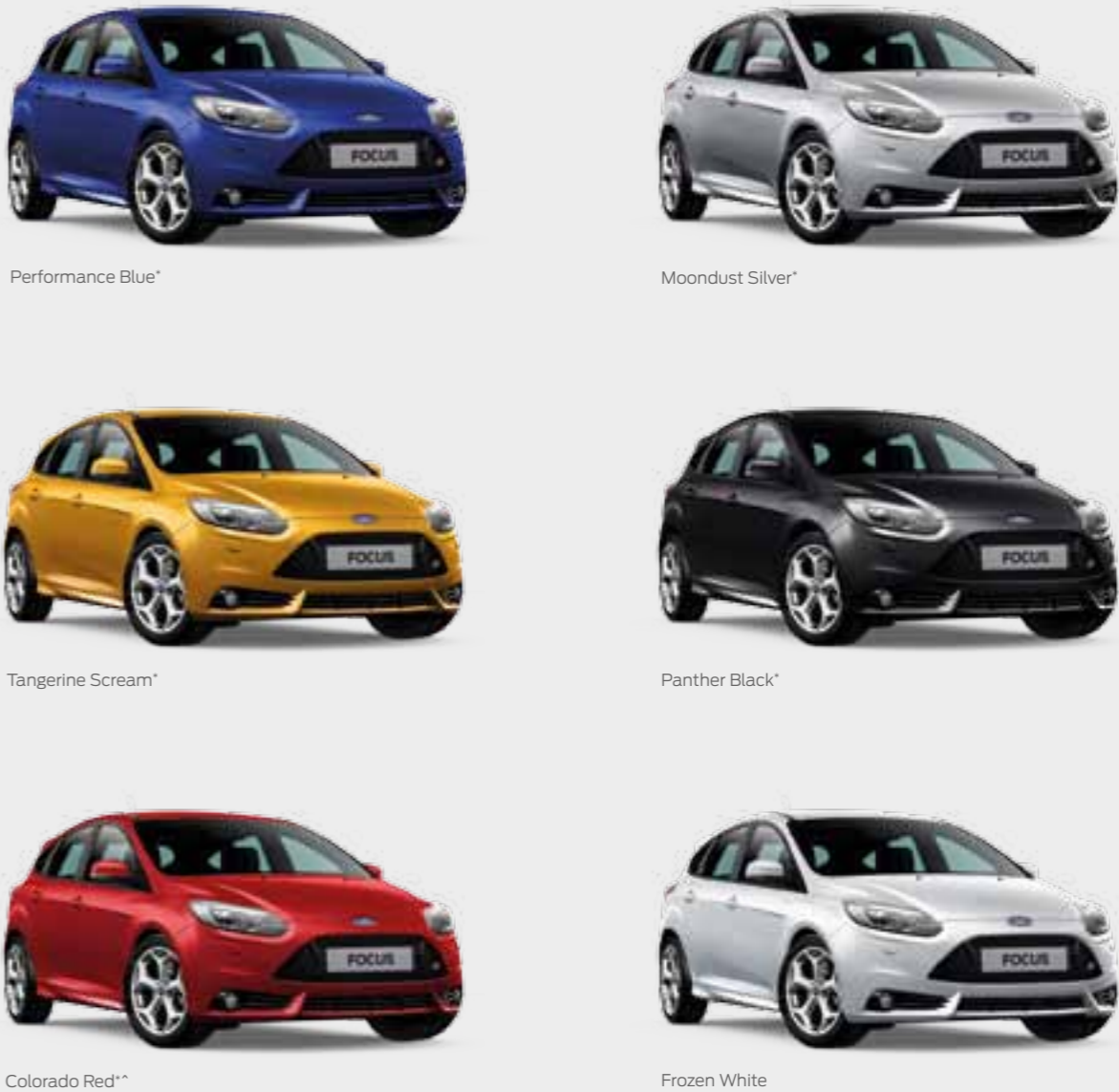
Candy Red\*

Midnight Sky\*

Panther Black\*

Focus Titanium shown for illustrative purposes. \*Prestige paint is an option that incurs an additional charge. \*\*Winning Blue not available on sedan models.

Focus ST colours



Performance Blue\*

Moondust Silver\*

Tangerine Scream\*

Panther Black\*

Colorado Red\*\*

Frozen White

\*Prestige paint is an option that incurs an additional charge. \*\*Colorado Red will change to Race Red on all October build vehicles.

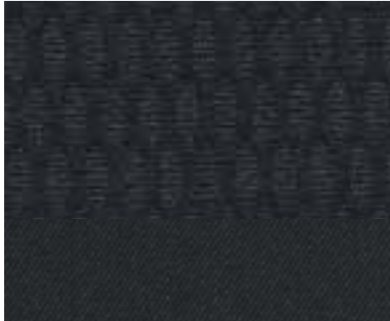
**Ambiente**

Seat insert: Rack in Charcoal Black  
Seat bolster: Gecko in Warm Steel  
Instrument panel: Charcoal Black



**Trend**

Seat insert: Otis in Charcoal Black  
Seat bolster: Lux in Charcoal Black  
Instrument panel: Charcoal Black



**Sport**

Seat insert: Rack in Charcoal Black  
Seat bolster: Gecko in Metal Grey  
Instrument panel: Charcoal Black



**Titanium**

Seat insert and bolster:  
Torino leather in Charcoal Black  
Instrument panel: Charcoal Black



**Focus ST Trims**

Trim colour: Spirit Blue  
Paint colour: Performance Blue,  
Frozen White



Trim colour: Race Red  
Paint colour: Colorado Red,  
Panther Black



Trim colour: Tangerine Scream  
Paint colour: Tangerine Scream



Trim colour: Smoke Storm  
Paint colour: Moondust Silver





## Enhanced versatility

We all use our cars in different ways. Maybe to transport mountain bikes? Or for the odd weekend away at the beach? Your Ford Dealer can help you adapt your Focus to your lifestyle with a wide range of Ford accessories.

	Ambiente	Trend	Sport	Titanium	ST
<b>Exterior styling</b>					
Alloy wheel – 16" 5-spoke <sup>1</sup>	A	A	–	–	–
Alloy wheel – 16" 10x2-spoke <sup>1</sup>	A	A	–	–	–
Alloy wheel – 16" 5x3-spoke <sup>1</sup>	A	A	–	–	–
Alloy wheel Lock Nut Set	A	A	A	A	A
C.S.A – Alloy wheels <sup>1,2,3,4</sup>	A	A	–	–	–
Spoiler–large (hatch)	A	A	S	S	S
Spoiler (sedan)	A	A	A	S	–
Chrome Mirror skull caps	A	A	A	A	A
Licence plate covers	A	A	A	A	A
Decal bodyside "Focus"	A	A	A	A	A
<b>Exterior protection</b>					
Bonnet protector	A	A	A	A	A
Weathershield	A	A	A	A	A
Mud flaps (front and rear)	A	A	–	–	–
Mud flaps (rear)	–	–	A	A	–
Rear bumper protection chrome	A	A	A	A	A
Rear bumper protection foil	A	A	A	A	A
Rear bumper protection foldout mat (not compatible with anti-slip luggage mat)	A	A	A	A	A
<b>Interior styling, comforts and storage</b>					
Front door scuff plates – stainless steel with etched vehicle logo	A	A	A	A	S
Front door scuff plates – illuminated	A	A	A	A	–
Carpet Floor Mats – front and rear passengers (set of 3)	A	A	A	A	S

	Ambiente	Trend	Sport	Titanium	ST
<b>Interior styling, comforts and storage (continued)</b>					
Anti-slip luggage compartment mat	A	A	A	A	A
Foldable luggage compartment mat (hatch)	A	A	A	A	A
Organiser cargo – Ford logo	A	A	A	A	A
Umbrella storage	A	A	A	A	A
<b>In car entertainment &amp; electrical</b>					
Organiser child activity	A	A	A	A	A
DVD/CD wallet	A	A	A	A	A
iPod USB integration cable <sup>5</sup>	A	A	A	A	A
Fridge 'day tripper' 15l	A	A	A	A	A
Fridge 240v power adaptor	A	A	A	A	A
Garmin nuvi® portable satellite <sup>2</sup>	A	A	–	–	–
<b>Safety</b>					
First aid kit	A	A	A	A	A
Fire extinguisher	A	A	A	A	A
Safety triangle	A	A	A	A	A
Go Technologies® Reversing Camera <sup>2</sup>	A	A	–	–	–
Parking distance sensors - rear	A	S	–	S	S
<b>Roof top carrying</b>					
Carry bars	A	A	A	A	A
Carry bars accessory – ski carrier <sup>6</sup>	A	A	A	A	A
Carry bars accessory – bike carrier <sup>6</sup>	A	A	A	A	A
Carry bars accessory – ski/snowboard carrier <sup>6</sup>	A	A	A	A	A
Rhino-rack® carry bars & accessories <sup>2</sup>	A	A	A	A	A

S = Standard. A = Accessory that can be added at any time.

1. Wheels and tyres sold separately. 2. This accessory is a Supplier Branded Accessory and is not manufactured or warranted by Ford. The warranty is provided by the manufacturer of the accessory. 3. It is recommended that tyres matching original equipment specification be fitted to C.S.A. alloy wheels. 4. For more information on this product visit us at [www.ford.com.au](http://www.ford.com.au) 5. iPod is a trademark of Apple Inc. 6. Attaches to Genuine Ford carry bars (sold separately).



### Weathershield

Reduces wind turbulence and noise, allowing you a more enjoyable drive with the windows down, even during light rain. Front and rear available.



### Mud flaps

Hardwearing black rubber mud flaps help to protect the rear of your Focus from mud, stones and debris. Front and rear sold separately.



### Chrome door mirror housing

Add a stylish and eye-catching look to the exterior of your Focus.



### Hatch rear spoiler – large

This accessory gives an aerodynamic finish to the roof line.



### Scuff plates

Elegant polished stainless steel scuff plates, with etched 'Focus' script.



16" 5-spoke alloy wheel



16" 10x2 spoke alloy wheel



16" 5x3 spoke alloy wheel

### Alloy wheels

A range of distinctive alloy wheels purpose-designed to complement Focus' dynamic lines.



## Mechanical specifications

Engine type	Duratec 1.6L TI-VCT DOHC	Duratec 2.0L TI-VCT GDI	Duratorq 2.0L TDCI Diesel	2.0L GTDI 4-cylinder EcoBoost
Maximum power output – ISO (kW/rpm) <sup>1</sup>	92kW @ 6300rpm	125kW @ 6600rpm	120kW @ 3750rpm	184kW @ 5500rpm
Maximum torque – ISO (Nm/rpm) <sup>1</sup>	159Nm @ 4000rpm	202Nm @ 4450rpm	340Nm @ 2000-3250rpm	360Nm @ 2000-4500rpm (Nm with overboost)
<b>Fuel</b>				
Fuel type	91-98 RON	91-98 RON	Diesel	95-98 RON
Fuel consumption – L/100km (ADR 81/02 combined cycle) <sup>2</sup>	6.2 (Manual) 6.5 (Auto)	6.6 (Manual and Auto Trend and Sport models) 6.7 (Titanium)	5.4 (Auto)	7.4 (Manual)
CO <sub>2</sub> emissions (g/km) <sup>2</sup>	145 (Manual) 153 (Auto)	154 (Manual and Auto Trend and Sport models) 156 (Titanium)	142 (Auto)	172 (Manual)
Emission level	Euro stage 4	Euro stage 4	Euro stage 4	Euro stage 4
Fuel tank capacity (litres)	55	55	60	62
Ford Easy-Fuel capless refuelling system	S	S	S	S
Lockable fuel flap	S	S	S	–
Active Grille Shutter	S	S	S	S

Engine	Ambiente		Trend		Sport	Titanium		ST
	Hatch	Sedan	Hatch	Sedan	Hatch	Hatch	Sedan	Hatch
Duratec 1.6L TI-VCT, 4-cylinder 16V engine	S	S	–	–	–	–	–	–
Duratec 2.0L TI-VCT GDI, 4-cylinder 16V engine	–	–	S	S	S	S	S	–
Duratorq 2.0L TDCI, 4-cylinder Diesel engine	–	–	O	O	O	O	–	–
EcoBoost 2.0L GTDI, 4-cylinder 16V engine	–	–	–	–	–	–	–	S
<b>Transmission</b>								
Manual – 5-speed	S	S	S	–	S	–	–	–
Manual – 6-speed	–	–	–	–	–	–	–	S
PowerShift® automatic with 6-speed sequential sports shift	O	O	O	S	O	S	S	–
<b>Steering</b>								
Hydraulic Power-Assisted Steering (HPAS)	–	S	–	–	–	–	–	–
Electric Power-Assisted Steering (EPAS)	S	–	S	S	S	S	S	S
<b>Suspension</b>								
Sports suspension	–	–	–	–	S	S	S	–
Sports suspension ST tuned	–	–	–	–	–	–	–	S
<b>Technology</b>								
Ford EcoMode (driver information system)	S	S	S	S	S	S	S	S

## Specifications

	Ambiente	Trend	Sport	Titanium	ST
<b>Exterior design features</b>					
Rear spoiler – (hatch)	S	S	–	–	–
Large rear spoiler – (hatch)	–	–	S	S	–
Rear spoiler – (sedan)	–	–	–	S	–
Sports body colour rear spoiler	–	–	–	–	S
Sports bodykit <sup>4</sup>	–	–	–	–	S
Power adjustable mirrors with side indicator	S	S	–	–	–
Power adjustable heated mirrors with side indicator	–	–	S	–	–
Power adjustable heated mirrors with side indicator and auto folding function	–	–	–	S	S

	Ambiente	Trend	Sport	Titanium	ST
<b>Exterior design features (continued)</b>					
Rear LED tail lamps (hatch only)	–	–	S	S	S
Bi-Xenon HID headlamps with static cornering lights, auto headlamp leveling and headlamp jet wash	–	–	–	O <sup>3</sup>	–
Bi-Xenon HID headlamps with headlamp jet wash, LED daytime running lamps and static cornering lights	–	–	–	–	S
Dual centre exhaust	–	–	–	–	S
Prestige paint	O	O	O	O	O

S = Standard. O = Options that can be ordered before a vehicle is manufactured.

<sup>1</sup> All performance data for petrol models measured using 95RON fuel. <sup>2</sup> Figures obtained from controlled tests using ADR 81/02 (combined). Actual fuel consumption and emissions will depend on many factors including driving habits, prevailing conditions and your vehicle's equipment, condition and use. <sup>3</sup> Available for Titanium model only, as part of optional Sports Executive Pack. <sup>4</sup> Including: front bumper skirt, rear bumper skirt, side skirts, sports grille, large rear spoiler.

## Specifications

	Ambiente	Trend	Sport	Titanium	ST
<b>Wheel availability</b>					
16" x 6" steel wheels and covers with 205/60 tyres (set of 4)	S	–	–	–	–
16" x 7", 5-spoke alloy wheels with 205/60 tyres (set of 4)	–	S	–	–	–
17" x 7", 5-spoke alloy wheels with 215/50 tyres (set of 4)	–	–	S	–	–
18" x 8", 5-spoke alloy wheels with 235/40 tyres (set of 4)	–	–	–	S	–
18" x 8" alloy wheel with 235/40 R18 tyres (set of 4)	–	–	–	–	S
Goodyear Eagle F1 Asymmetric 2 tyres	–	–	–	–	S
Spare – Mini Steel	S	S	S	S	S
<b>Exterior convenience features</b>					
Reverse parking sensors	–	S	– <sup>5</sup>	S	S
Active Park Assist – Semi Auto Parking with front and rear sensors and Park Slot Measurement (PSM)	–	–	–	S	–
Auto headlights	–	O <sup>6</sup>	S	S	S
Follow-me-home lighting	–	O <sup>6</sup>	S	S	S
Front fog lights	–	S	S	S	S
Auto wipers	–	O <sup>6</sup>	S	S	S
Rear intermittent wash/wipe (hatch only)	S	S	S	S	S
<b>Option packs</b>					
Sports Executive Pack: Active City Stop Adaptive Cruise Control, Bi-Xenon HID headlamps with static cornering lights, auto headlamp leveling and headlamp jet wash, power tilt/slide sunroof	–	–	–	O	–
Convenience Pack: Auto wipers, auto headlights, Follow-me-home lighting, auto dimming rear view mirror	–	O	S	S	–
<b>Interior design features</b>					
Gear knob – leather-finish	–	–	S	S	S
Leather wrapped handbrake grip	–	–	S	S	S
Leather wrapped steering wheel	–	–	S	S	S
<b>Audio and communication systems</b>					
Ford SYNC™ connectivity system with voice-activated hands free calling, automatic phone book transfer, text messaging support (compatible phones only), digital music player support <sup>7</sup>	S	S	S	S	S
Ford Audio System: 3.5" display, extended integrated control panel, external AUX and USB connection for external music devices, remote audio controls, 6 speakers <sup>8</sup>	S	S	–	–	–
Sony Audio System: 5" TFT display, branded integrated control panel, external AUX and USB connection for external music devices, remote audio and MFD controls, 9 speakers <sup>9</sup>	–	–	S	S	S
Bluetooth® hands-free phone and Voice Control with USB/iPod connectivity port <sup>9</sup>	S	S	S	S	S
Multi-Function display including distance to empty, average speed, average fuel consumption, outside air temperature	S	S	S	S	S

S = Standard. O = Options that can be ordered before a vehicle is manufactured.

<sup>5</sup> Reverse parking sensors not available on Sport model until September build vehicles. <sup>6</sup> Available for Trend model as part of optional Convenience Pack. <sup>7</sup> For phone and media player compatibility please visit [www.fordsync.com](http://www.fordsync.com). <sup>8</sup> Connection cables sold separately. <sup>9</sup> Bluetooth® is a registered trademark of Bluetooth SIG Inc., and is used under licence. iPod is a trademark of Apple Inc.

	Ambiente	Trend	Sport	Titanium	ST
<b>Climate control</b>					
Air conditioning – manual control	S	S	–	–	–
Air conditioning – dual-zone climate control	–	–	S	S	S
<b>Interior convenience features</b>					
Smart key with 'Ford Power' starter	–	–	–	S	S
Satellite navigation	–	–	S	S	S
Cruise control – including speed limit function and steering wheel switches	–	S	S	S	S
Adaptive cruise control	–	–	–	O <sup>3</sup>	–
Centre console – 2 x cup holders, centre storage, fixed armrest, 12V power socket	S	S	S	S	S
Rear view mirror – auto dimming	–	O <sup>6</sup>	S	S	S
Sunroof – power tilt/slide	–	–	–	O <sup>3</sup>	–
ST front door scuff plates	–	–	–	–	S
ST front and rear carpet mats	–	–	–	–	S
Driver and passenger illuminated vanity mirror	–	–	S	S	S
Sports alloy pedal covers	–	–	–	–	S
Trip/fuel computer	S	S	S	S	S
Windows – Power operated with driver one–touch up/down	S	S	–	–	–
Windows – Power operated front/rear with one–touch up/down and global open/close	–	–	S	S	S
Ambient interior LED lighting (red)	–	–	S	S	S
<b>Seats</b>					
Front seats – comfort style	S	S	–	–	–
Recaro® partial leather sport seats	–	–	–	–	S
Driver seat and passenger seat manual 4 way adjust	–	–	–	–	S
Front seats – V-shape sports seats	–	–	S	S	–
6-way power adjustable driver's seat	–	–	–	S	–
Seats – leather trimmed (only available with sports-style front seats)	–	–	–	S	–
Rear seat – 60:40 split back	S	S	S	S	–
Rear seat – 60:40 split back with cushion	–	–	–	–	S
Rear seat – base cushion 1 piece flip up	S	S	S	S	–
Rear seat – folding centre armrest, with two integrated cup holders	–	–	S	S	–
Driver side manual lumbar adjust	–	–	S	S	–
<b>Safety and security</b>					
Airbags – driver and passenger individual single stage front airbags and side thorax airbags	S	S	S	S	S
Airbags – side curtain airbags for front and rear seats	S	S	S	S	S
Intelligent Protection System (IPS)	S	S	S	S	S
Anti-lock braking system (ABS) with Electronic Brake-force Distribution (EBD)	S	S	S	S	S
Torque Vectoring Control	S	S	S	S	S
Dynamic Stability Control (DSC) with Traction Control and Emergency Brake Assist (EBA)	S	S	S	S	S
Emergency brake lights (Automatic flashing of brake lights under heavy braking)	S	S	S	S	S
Remote central locking	S	S	S	S	S
Immobiliser – passive anti-theft system	S	S	S	S	S
Hill Launch Assist	S	S	S	S	S
Reverse camera	–	–	S	S	S
Front seat belts: 3-point active seatbelts with pretensioners	S	S	S	S	S
Driver and front passenger Beltminder™	S	S	S	S	S
Thatcham™ alarm	–	–	–	–	S