

THE ALL-NEW **FOCUS**



Feel the difference

Start more than a car

Representing the next level of Ford Kinetic Design, this is a car that makes its presence known. Whichever way you look at it, the all-new Focus is impossible to ignore.



Focus Titanium Hatch with optional Sports Executive Pack shown in Candy Red.

This brochure details specifications and features of the all-new Focus available from August 2011 with the exception of the Focus Trend diesel with automatic transmission which will be available from October 2011 and the Focus Ambiente with automatic transmission which will be available from November 2011. Please consult your Ford Dealer for the most recent specifications and availability information.

Start an adventure

Get ready for the most addictive driving experience, with all the agility and precision you could wish for. It's so much fun to drive, you'll always be craving for more.



Focus Titanium Sedan with optional Sports Executive Pack shown in Moon dust Silver.

Start a relationship

The dynamic personality of the all-new Focus continues inside. The driver-oriented cockpit wraps around you, so you'll feel completely at one with the car, with the latest technology and features at your fingertips.



Focus Titanium interior shown with optional Sports Executive Pack.

Keep your hands on the wheel

Need to call while driving? Or maybe you want to change radio stations or the song on your iPod? Just say it. The Voice Control System technology on the all-new Focus lets you control your Bluetooth-compatible mobile phone and audio system with the sound of your voice.



Take your music with you

Connect your iPod mobile digital device, MP3 player or USB stick and operate it via the Focus audio system – with track information shown on your audio display. A dedicated connector cable is available as an accessory for operating most iPods.

Smarter thinking inside and out

In the all-new Focus, advanced technology helps make every journey easier and more enjoyable.



Give every journey a soundtrack to remember

Inside the all-new Focus music steps up to a whole new level. It's all thanks to the premium Sony audio system with 9 speakers as well as a 4.2" multi-functional display.



Focus Titanium Sedan with optional Sports Executive Pack shown in Moondust Silver.

Parking distance sensors*

Automatically activates and provides an audible warning tone to help you safely judge parking distances and to reverse more accurately.



Active Park Assist[®]

Helps you parallel park quickly and easily without ever touching the steering wheel. When the system is activated, ultrasonic sensors measure and identify a large enough parking spot. Once you stop, the system is designed to take over and steer the car safely into the space.

*Bluetooth® is a registered trademark of Bluetooth SIG Inc., and is used under licence. *iPod is a trademark of Apple Inc. Requires connection cable, sold separately. *Only available on Trend, Sport and Titanium models. **Only available on Titanium models. ***Only available on Sport and Titanium models.



Steering that adapts to its environment

The all-new Focus's sophisticated new Electric Power-Assisted Steering (EPAS)* achieves a balance that's just not possible with conventional power steering systems. At parking speeds, full power is delivered for feather-light manoeuvring. Once you're on the move, it steadily weights up to just the right extent for optimum feel and control.

An addictive driving experience

The all-new Focus combines our latest engine and transmission technology with a dynamic chassis and precise steering. It reminds you how driving can be such a pleasure.



Focus Titanium Hatch with optional Sports Executive Pack shown in Candy Red.

Ford PowerShift® transmission*

Using the very latest gearbox technology, Ford PowerShift® delivers the perfect combination between the convenience of an automatic and the performance normally associated with a manual. This new 6-speed automatic transmission cleverly selects the next appropriate gear at precisely the right moment for lightning-fast gear changes, with no disruption to the flow of power. It also has a manual mode that allows you to switch gears at the flick of the shifter, but without the need for a clutch pedal.



Control Blade independent rear suspension

For a smoother ride and more precise handling, this advanced rear suspension system allows each wheel to independently move both upwards and backwards over bumps in the road.

Torque Vectoring Control

Designed to improve traction, roadholding and agility when cornering by continuously optimising the engine torque distributed to each front wheel to match the amount of grip each wheel has available. The result is a more rewarding driving experience.



Smart engine technologies

Ford's smart engine technologies are at the heart of the all-new Focus engine range. Both the 2.0 litre gasoline direct injection (GDI), with its precise, pressurised fuel delivery, and the economical 1.6L Ti-VCT engine, deliver responsive performance and exceptional fuel economy.



*Not available on the 1.6L Sigma Ti-VCT with 6-speed PowerShift® automatic transmission. Hydraulic Power Assisted Steering standard on 6-speed PowerShift automatic transmission. *Optional on Ambiente, Trend and Sport models. 6-speed PowerShift® automatic transmission standard on Titanium models and Ambiente, Trend and Sport sedan variants.

Cockpit driving position

Driving the all-new Focus, you could easily believe you were in control of a sports car; the low seating position and high beltline mean it fits you like a glove.



Designed around you

Your every connection with the all-new Focus – from driver-orientated cockpit to the responsiveness of the steering, throttle and brakes, and the feel of the switches and controls – makes you feel a part of the car.



Focus Titanium interior shown.

Ford Power Start Button*

Start the car without ever holding the key. Just keep the key fob with you in your pocket or bag.



Autowipers & Auto headlights#

The all-new Focus packs in an array of high-tech safety features, like windscreen wipers that are activated automatically when it begins to rain and lights that are activated when the external light becomes too dim.



Dual-zone climate control^

The innovative comforts in the all-new Focus have you in mind – technology and comfort combine to deliver a sublime driving experience. Set the interior temperature to suit your wishes and travel in complete comfort.

A true driver's car

Slide in behind the wheel and you instantly appreciate the many hours that were spent developing the cockpit and seating position of the all-new Focus. As a result, everything is within easy reach, giving you a real feeling of control and a driving experience that is truly mind-blowing.

*Only available on Titanium models. #Standard on Sport and Titanium models and optional as part of the Convenience Pack available for Trend models. ^Only available on Sport and Titanium models.



Proven quality

The attention to detail which has been lavished on the all-new Focus is immediately evident, from the exterior finish to the quality of the interior. Ford has engineered every single component for dependability and strength with one objective clearly in mind; quality that's built to last.

Focus on safety

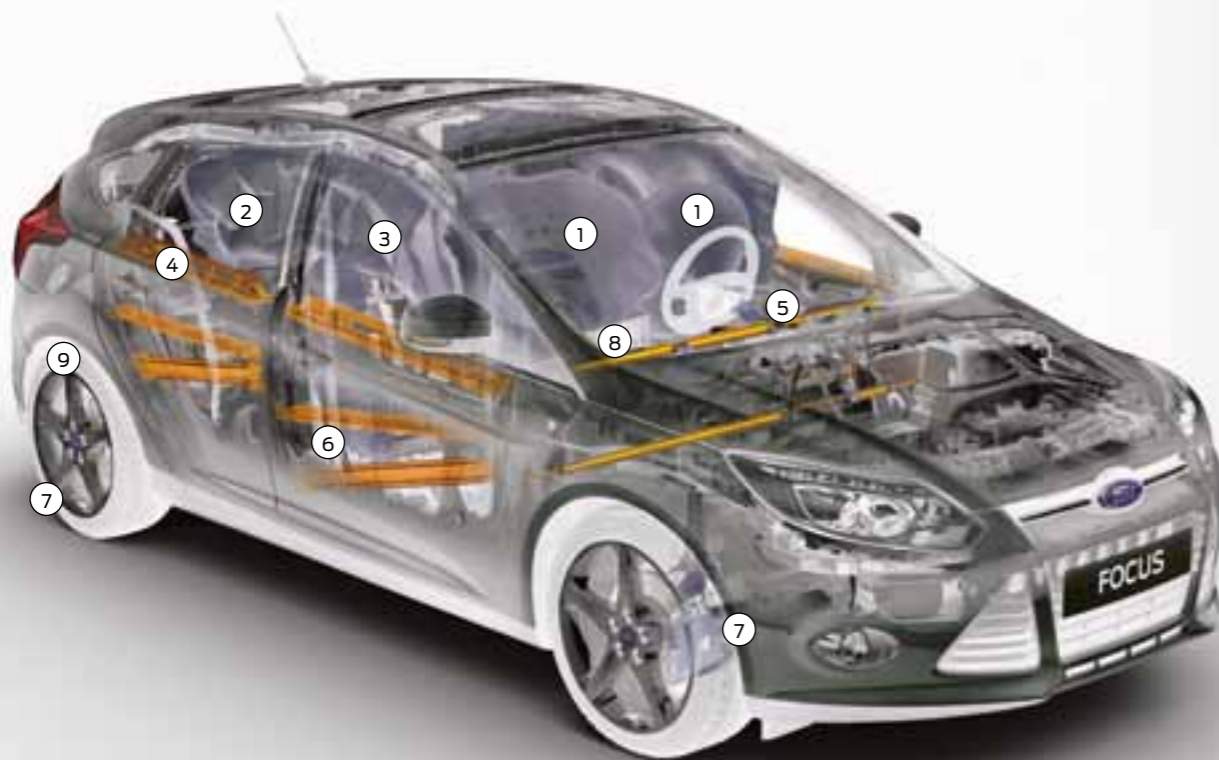
Being able to enjoy all the thrills, exhilaration and technology of the all-new Focus mean nothing without safety. It's why the all-new Focus is engineered so that every element plays a part in helping keep you and your passengers safe.

Intelligent Protection System (IPS)

The all-new Focus's advanced Intelligent Protection System (IPS) uses a range of sophisticated technologies that are designed to help keep you protected, including an ultra-high strength steel safety cage, an anti-lock braking system (ABS) with electronic brake-force distribution (EBD), and front and side curtain airbags.

The Ford Focus IPS includes:

1. Driver and passenger individual single stage front airbags and side thorax airbags
2. Side curtain airbags for front and rear seats
3. Front seatbelts fitted with pretensioners and load limiters
4. 3-point seatbelts fitted to all three rear seats
5. Collapsible steering column and pedals for optimised protection of driver's legs and feet
6. Robust computer-optimised body structure with ultra-rigid safety cell and crumple zones
7. Anti-lock brakes (ABS) with electronic brake-force distribution (EBD) and Emergency Brake Assist (EBA)
8. Emergency Brake Warning
9. Dynamic Stability Control (DSC)



Overseas model shown.



Focus Titanium interior shown.

Tested to extremes

The all-new Focus was pushed through the extremes of real-world weather from -40°C to +80°C and tested over and over again.



Quality you can feel

Not just great to drive, it's great to sit in too, thanks to a leading-edge interior design, high-quality materials and first-class fit and finish.

Dynamic Stability Control (DSC)

If sensors detect oversteer or understeer, the onboard computer can modulate engine power and apply the brakes to individual wheels to keep them under control and heading in the right direction.



Obsessively driven

During its development, we test-drove the all-new Focus the equivalent of 88 times around the globe. It's a car you can rely on, right down to the smallest ball bearing.



300,000 door shuts

We opened and closed the doors, bonnet and tailgate over 300,000 times in real-world conditions to help ensure they will never let you down.





Ambiente

The Ambiente is a stylish introduction to the all-new Focus range.



Ambiente standard features

- 1.6L Sigma Ti-VCT petrol with 5-speed manual transmission*
- Power adjustable side mirrors with side indicators
- Control Blade independent rear suspension
- Torque Vectoring Control
- Body coloured rear spoiler (hatch only)
- 16" x 6" steel wheels (set of 4)
- Ford Easy-Fuel capless refuelling system
- Air conditioning
- Power central locking
- 60/40 split rear seats
- Power driver and passenger front and rear windows
- Bluetooth® and Voice Control System
- USB port and iPod™ connectivity
- Ford Intelligent Protection System (IPS)
- Dynamic Stability Control (DSC) with Traction Control (TC) and Emergency Brake Assist (EBA)

*5-speed manual transmission not available on Ambiente sedan.
 ®Bluetooth® is a registered trademark of Bluetooth SIG Inc., and is used under licence.
 ™iPod™ is a trademark of Apple Inc. Requires connection cable, sold separately.

Torque Vectoring Control
 Designed to improve traction and agility when cornering, Torque Vectoring Control gives an added edge to every driving experience.

Bluetooth®
 Enjoy the convenience and added safety of being able to make hands-free calls while driving.

Voice Control System
 Use your voice to control your Bluetooth® compatible mobile phone and audio system.

USB port and iPod® connectivity
 Connect your iPod® mobile digital device, MP3 player or USB stick and operate it via your Ford audio system.

Ford Easy-Fuel capless refuelling system
 Only accepts the correct type of fuel-filler nozzle for your car.

Power adjustable mirrors with side indicators
 The convenience of setting your optimum mirror settings is at your fingertips.





Trend

The all-new Focus Trend effortlessly merges stylish design with innovation and convenience.



Additional to Ambiente

- 2.0L GDI petrol with 5-speed manual transmission*
- 16" x 7" alloy wheels (set of four)
- Front fog lights
- Rear parking sensors
- Driver's seat adjustable lumbar support
- Cruise control with speed limiter
- Leather gearshift knob

Optional Convenience Pack

- Autowipers
- Auto headlights
- Follow-Me-Home lighting
- Auto dimming rear view mirror

*5-speed manual transmission not available on Trend sedan.

16" alloy wheels

The striking design of these distinctive alloy wheels give the Focus Trend a sharp, urban edge.

Cruise control with speed limiter

The freedom of the open road is more enjoyable with cruise control while the limiter function helps to stay within the speed limits.

Parking distance sensors

Automatically activates and provides an audible warning tone to help you safely judge parking distances and to reverse more accurately.

Leather gearshift knob

The high-grade leather and aluminium-look insert add a sporty feel to your driving experience.

Front fog lights

In combination with the front grille, the low slung fog lights give the Focus Trend a striking sporty look.

Driver's seat adjustable lumbar support

Now every driving experience can be enjoyed in complete comfort.





Sport

The all-new Focus's dynamic character really comes alive in Sport, with an even greater emphasis placed on driving enjoyment.



Additional to Trend

- 17" x 7" alloy wheels (set of four)
- Large rear spoiler (hatch only)
- Sports-tuned suspension
- V-shape sports-style front seats
- Electrically-operated and heated door mirrors with side indicators
- Auto wipers
- Sony radio/CD with 4.2" multi-functional display
- Leather-4 spoke steering wheel
- Dual-zone climate control
- Ambient interior LED lighting (red)

*Bluetooth® is a registered trademark of Bluetooth SIG Inc., and is used under licence.

17" alloy wheels

The design of these striking alloy wheels enhance the sleek lines of the Focus Sport.

Sony radio/CD with 4.2" multi-functional display

Features MP3 compatibility, 9 speakers, USB interface, Bluetooth® enabled Voice Control System and audio streaming (with compatible mobile phones).

Sports-tuned suspension

The sports-tuned suspension further connects you to the road and delivers an exhilarating driving experience.

V-shape sports-style front seats

The body-hugging v-shape sports-style front seats deliver maximum comfort and ergonomic support.

Dual-zone climate control

Set the interior temperature to suit your wishes and travel in complete comfort.

Autowipers

Front windscreen wipers that are activated automatically when it begins to rain.





Titanium

The very latest innovative technology and contemporary luxury make Titanium the ultimate all-new Focus.



Additional to Sport

- 6-Speed PowerShift® automatic transmission as standard
- 18" 5-spoke alloy wheels (set of 4)
- Active Park Assist automated parking system
- Partial leather interior trim
- Ford Power Start Button
- Ford KeyFree system
- Heated front seats

Optional Sports Executive Pack*

- Adaptive Cruise Control
- Bi-Xenon HID headlamps with LED Daytime Running Lights and static cornering lights
- Power tilt/slide sunroof
- 4-way power adjustable driver's seat

*Optional Sport Executive Pack available for Titanium petrol models from November, 2011

18" alloy wheels
5-spoke alloys add a touch of class to the top-of-the-range Focus Titanium.

Active Park Assist
Take the hassle out of parking. Now you can park quickly and easily without ever touching the wheel.

Partial leather trim
The leather trim seats give the Focus Titanium interior a contemporary, dynamic look and feel.

Ford Power Start Button
With a simple push of the Power Start Button the Focus Titanium's engine comes to life.

Ford KeyFree System
The Ford KeyFree System allows you to lock and unlock the doors and boot, and start the engine, without having to get the keys out of a pocket or handbag.

Heated front seats
For an extra level of comfort during the colder months, the heated front seats treat driver and front passenger to an even more enjoyable ride.



The range

With a great choice of series, bodystyles and engines, there's a an all-new Focus to meet every need.



Focus Titanium models shown.

Ambiente

Standard features

MECHANICAL

- Standard engine: 1.6L Sigma TI-VCT petrol
- 5-speed manual transmission[^]
- Control Blade independent rear suspension
- Electric Power Assisted Steering (EPAS)^{^^}
- Torque Vectoring Control

EXTERIOR

- 16" x 6" steel wheels
- Halogen headlights
- Body coloured bumpers and side mirrors
- Rear spoiler (hatch only)
- Power adjustable side mirrors with side indicators
- Mini spare wheel
- Ford Easy Fuel capless fueling system
- Power central locking

INTERIOR

- Ford Audio System – 3.5" dot matrix display, extended integrated control panel
- AUX connection for external music device, remote audio controls
- Stereo radio/CD with six speakers
- Bluetooth[®]* Hands-Free Phone and Voice Control
- USB/iPod^{^^^} connectivity port
- Power driver and passenger front and rear windows
- Manual 4-way driver seat adjustment
- 60/40 split rear seats

OPTIONAL

- 6-Speed PowerShift[®] automatic transmission*

SAFETY

- Emergency Brake Assist (EBA)
- Anti-lock Braking System (ABS)
- Dynamic Stability Control (DSC) with Hill Launch Assist function
- Driver and passenger individual single stage front airbags and side thorax airbags
- Side curtain airbags for front and rear seats
- Front seatbelts fitted with pretensioners and load limiters
- 3-point seatbelts fitted to all three rear seats

BODYSTYLES

- 4-Door sedan and 5-Door hatch

Trend

Additional to Ambiente

MECHANICAL

- Standard engine: 2.0L GDI petrol
- 5-speed manual transmission[^]

EXTERIOR

- 16" x 7" alloy wheels in lieu of 16" steel wheels (set of 4)
- Front fog lights
- Rear parking aid sensors
- Body coloured door handles

INTERIOR

- Manual driver seat lumbar adjust
- Cruise control with steering wheel switches
- Leather gearshift knob

OPTIONAL

- 2.0L Duratorq TDCi* with 6-Speed PowerShift[®] automatic transmission
- 6-Speed PowerShift[®] automatic transmission
- Convenience Pack:
 - Autowipers
 - Auto headlights
 - Follow-Me-Home lighting
 - Auto-dimming rear-view mirror

BODYSTYLES

- 4-Door sedan & 5-Door hatch

Sport

Additional to Trend

MECHANICAL

- Standard engine: 2.0L GDI petrol
- 5-speed manual transmission[^]

EXTERIOR

- 17" x 7" alloy wheels in lieu of 16" alloy wheels (set of 4)
- Large rear spoiler (hatch only)
- Power adjustable heated side mirrors with side indicators
- Autowipers
- Auto headlights
- Follow-Me-Home lighting
- Rear LED tail lamp (hatch only)

INTERIOR

- Sony Audio System with nine speakers
- 4.2" centre console display
- Dual-zone climate control
- Auto dimming rear-view mirror
- EcoMode
- V-shape sports style front seats
- Rear seat flip down armrests with integrated cup holders
- Front scuff plates
- Ambient LED lighting (red)

OPTIONAL

- 2.0L Duratorq TDCi with 6-Speed PowerShift[®] automatic transmission
- 6-Speed PowerShift[®] automatic transmission

BODYSTYLES

- 4-Door sedan and 5-Door hatch

Titanium

Additional to Sport

MECHANICAL

- Standard engine: 2.0L GDI petrol
- 6-Speed PowerShift[®] automatic transmission

EXTERIOR

- 18" x 8" alloy wheels in lieu of 17" alloy wheels (set of 4)
- Active Park Assist automated parking system
- Smart Key

INTERIOR

- Ford Power Start Button
- Partial leather interior trim
- Heated seats

OPTIONAL

- 2.0L Duratorq TDCi (6-Speed PowerShift[®] automatic transmission only)
- Sports Executive Pack[®]:
 - Adaptive Cruise Control
 - Bi-Xenon HID headlamps with LED Daytime Running Lights and static cornering lights
 - Power tilt/slide sunroof
 - 4-way power adjustable driver's seat

BODYSTYLES

- 4-Door sedan and 5-Door hatch

[^]5-speed manual transmission not available on Ambiente, Trend or Sport sedan variants. 6-speed PowerShift[®] automatic transmission standard on the Ambiente, Trend and Sport sedan variants.
^{^^}EPAS not available on the 1.6L TI-VCT engine with 6-speed PowerShift[®] automatic transmission. Hydraulic Power Assisted Steering standard on Ambiente model with 6-speed PowerShift[®] automatic transmission. *Focus Ambiente with automatic transmission available from November 2011. *Focus Trend diesel with automatic transmission available from October 2011. *Bluetooth[®] is a registered trademark of Bluetooth SIG Inc., and is used under licence. ^{^^^}iPod is a trademark of Apple Inc. [®]Optional Sport Executive Pack not available for Titanium petrol models until November 2011.



Scuff plates

Elegant polished stainless steel scuff plates, with etched 'Focus' script. (Option, as part of Classic Interior Pack, or as an accessory)

Enhanced versatility

We all use our cars in different ways. Maybe to transport mountain bikes? Or for the odd weekend away at the beach? Your Ford Dealer can help you adapt your all-new Focus to your lifestyle with a wide range of Ford accessories.

Exterior Styling

	Ambiente	Trend	Sport	Titanium
Alloy Wheel – 16"x7 Design E 5 Spoke ¹	A	A	–	–
Alloy Wheel – 16"x7 Design F 10 Spoke ¹	A	A	–	–
Alloy Wheel – 16"x7 Design G 5X3 Spoke ¹	A	A	–	–
Alloy Wheel Lock Nut Set	A	A	A	A
C.S.A – Alloy Wheels ^{1,2,3,4}	A	A	A	A
Spoiler Large (hatch)	A	A	S	S
Spoiler (sedan)	A	A	A	A
Chrome Mirror Skull Caps	A	A	A	A
Carry Bars	A	A	A	A
Licence Plate Covers	A	A	A	A

Exterior Protection

	Ambiente	Trend	Sport	Titanium
Bonnet Protector	A	A	A	A
Weathershield	A	A	A	A
Mud Flaps Front and Rear	A	A	A	A
Rear Bumper Protection Chrome	A	A	A	A
Rear Bumper Protection Foil	A	A	A	A
Rear Bumper Protection Foldout Mat (not compatible with anti-slip luggage mat)	A	A	A	A

Interior Styling, Comforts and Storage

	Ambiente	Trend	Sport	Titanium
Front Door Scuff Plates – Stainless Steel with etched vehicle Logo	A	A	S	S
Carpet Floor Mats – Velour Front & Rear – with Logo	A	A	A	A
Carpet Floor Mats – Standard Front & Rear – with Logo	A	A	A	A
Contour Rubber Mats Front & Rear – with Logo	A	A	A	A
Anti-slip luggage Compartment Mat	A	A	A	A
Foldable Luggage Compartment Mat (Hatch)	A	A	A	A
Cargo Swing Net	A	A	A	A
Organiser Cargo – Ford Logo	A	A	A	A
Umbrella Storage	A	A	A	A

In Car Entertainment & Electrical

	Ambiente	Trend	Sport	Titanium
Organiser Child Activity	A	A	A	A
DVD/CD Wallet	A	A	A	A
Auxiliary audio plug in cable	A	A	A	A
iPod® USB Integration Cable ⁵	A	A	A	A
Fridge 'Day Tripper' 15L	A	A	A	A
Fridge 240V Power Adaptor	A	A	A	A
Garmin Nuvi® Portable Satellite ²	A	A	A	A
Navigation systems & Accessories ²	A	A	A	A

Safety

	Ambiente	Trend	Sport	Titanium
First Aid Kit	A	A	A	A
Fire Extinguisher	A	A	A	A
Safety Triangle	A	A	A	A
Go Technologies® Reversing Camera ²	A	A	A	A

Roof Top Carrying

	Ambiente	Trend	Sport	Titanium
Carry bars	A	A	A	A
Carry bars accessory – ski carrier ⁶	A	A	A	A
Carry bars accessory – bike carrier ⁶	A	A	A	A
Carry bars accessory – ski/snowboard carrier ⁶	A	A	A	A
Rhino-Rack® carry bars & accessories ²	A	A	A	A



Weathershield

Reduces wind turbulence and noise, allowing you a more enjoyable drive with the windows down, even during light rain. (Front and rear available)



Mud Flaps

Hardwearing black rubber mud flaps help to protect the rear of your all-new Focus from mud, stones and debris. Front and rear sold separately.



Chrome door mirror housing

Add a stylish and eye-catching look to the exterior of your all-new Focus.



Hatch rear spoiler – large

Gives an aerodynamic finish to the roof line. (Accessory)

S = Standard. A = Accessory that can be added at any time.

¹ Wheels and tyres sold separately. ² This accessory is a Supplier Branded Accessory and is not manufactured or warranted by Ford. The warranty is provided by the manufacturer of the accessory. ³ It is recommended that tyres matching original equipment specification be fitted to CSA alloy wheels. ⁴ For more information on this product visit us at www.ford.com.au ⁵ iPod® is a trademark of Apple Inc. ⁶ Attaches to Genuine Ford carry bars (sold separately).



Anti-slip luggage compartment mat

Luggage compartment protection with an anti-slip surface.



16" 5-spoke alloy wheel



16" 5x3-spoke alloy wheel



16" 10x2-spoke alloy wheel

Alloy Wheels

A range of distinctive alloy wheels purpose-designed to complement all-new Focus's dynamic lines.

Make it yours

Choosing the colour and trim for your all-new Focus is an opportunity to make it just exactly that – yours!



Frozen White



Candy Red*



Ink Blue



Lunar Sky



Moondust Silver



Midnight Sky



Mustard Olive*



Panther Black



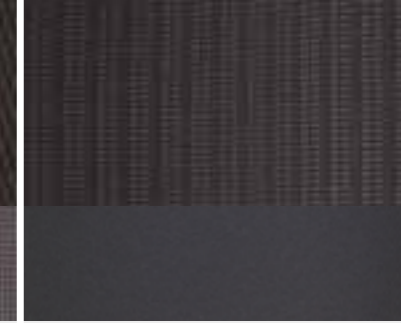
Ambiente

Seat insert: Rack in Charcoal Black
Seat bolster: Gecko in Warm Steel



Trend

Seat insert: Rack in Charcoal Black
Seat bolster: Gecko in Warm Steel



Sport

Seat insert: Pur in Charcoal Black
Seat bolster: Lux in Charcoal Black



Titanium

Seat insert: Pur in Charcoal Black
Seat bolster: Torino leather in Charcoal Black



Model	Ambiente	Trend	Sport	Titanium
Trim	Rack in Charcoal Black	Rack in Charcoal Black	Pur in Charcoal Black	Pur in Charcoal Black
Seat bolster trim and colour	Gecko in Warm Steel	Gecko in Warm Steel	Lux in Charcoal Black	Torino Leather in Charcoal Black
Instrument panel colour: upper	Charcoal Black	Charcoal Black	Charcoal Black	Charcoal Black
Instrument panel colour: lower	Charcoal Black	Charcoal Black	Charcoal Black	Charcoal Black

Focus Titanium shown for illustrative purposes.
*Not available on Ambiente models.



16" 7-spoke wheel cover
(Standard on Ambiente)



16" 5x2-spoke alloy wheel
(Standard on Trend)



17" 10x2-spoke alloy wheel
(Standard on Sport)



18" 5-spoke alloy wheel
(Standard on Titanium)

Specifications

Exterior design features

	Ambiente	Trend	Sport	Titanium
Rear spoiler – (hatch)	S	S	–	–
Large Rear spoiler – (hatch)	–	–	S	S
Power adjustable mirrors with side indicator	S	S	–	–
Power adjustable heated mirrors with side indicator	–	–	S	S
Rear LED tail lamp	–	–	S	S
Bi-Xenon HID headlamps with LED Daytime Running Lights and static cornering lights	–	–	–	O ¹

Wheel availability

	Ambiente	Trend	Sport	Titanium
16" x 6 1/2" steel wheels and covers with 205/55 tyres (set of 4)	S	–	–	–
16" x 7", 5-spoke alloy wheels with 215/55 tyres (set of 4)	–	S	–	–
17" x 7", 10 x 2-spoke alloy wheels with 215/50 tyres (set of 4)	–	–	S	–
18" x 8", 5-spoke alloy wheels with 235/40 tyres (set of 4)	–	–	–	S
Spare – Mini Steel	S	S	S	–
Spare – Full size spare wheel (16" steel)	–	–	–	S

Exterior convenience features

	Ambiente	Trend	Sport	Titanium
Rear parking sensors	–	S	S	S
Active Park Assist – Semi Auto Parking with front and rear sensors and park slot measurement (PSM)	–	–	–	S
Auto headlights	–	O ¹⁰	S	S
Follow-me-home lighting	–	O ¹⁰	S	S
Front fog lights	–	S	S	S
Ford Easy-Fuel capless refuelling system	S	S	S	S
Autowipers	–	O ¹⁰	S	S
Rear intermittent wash/wipe (hatch only)	S	S	S	S

Option packs

	Ambiente	Trend	Sport	Titanium
Sports Executive Pack – Adaptive Cruise Control, Bi-Xenon HID headlights, Power tilt/slide sunroof, 4-way adjustable driver's seat	–	–	–	O ¹
Convenience Pack – Autowipers, Auto headlights, Follow-Me-Home lighting, Auto dimming rear view mirror	–	O ¹⁰	–	S

Interior design features

	Ambiente	Trend	Sport	Titanium
Gear knob – Leather-finish	–	S	S	S
Scuff plates – Front with "Ford" logo	–	–	S	S
Leather wrapped steering wheel	–	–	S	S

Audio and communication systems

	Ambiente	Trend	Sport	Titanium
Ford Audio System – 3.5" dot matrix display, extended integrated control panel, external AUX connection for external music device, remote audio controls, 6 speakers ²	S	S	–	–
Sony Audio System – 4.2" TFT display, branded integrated control panel external AUX connection for external music device, remote audio and MFD controls, 9 speakers ²	–	–	S	S
Bluetooth® Hands-Free Phone and Voice Control with USB/iPod® connectivity port ³	S	S	S	S
Multi-Function display including distance to empty, average speed, average fuel consumption, outside air temperature	S	S	S	S

Climate control

	Ambiente	Trend	Sport	Titanium
Air conditioning – Manual control	S	S	–	–
Air conditioning – Dual zone climate control	–	–	S	S

Interior convenience features

	Ambiente	Trend	Sport	Titanium
Smart key with 'Ford Power' starter	–	–	–	S
Cruise control – including speed limit function and steering wheel switches	–	S	S	S
Adaptive cruise control	–	–	–	O ¹
Centre console – 2 x cup holders, centre storage, additional 12V power socket	S	S	–	–
Centre console – 2 x cup holders, centre storage, fixed armrest, additional 12V power socket	–	–	S	S
Rear view mirror – Auto-dimming	–	O ¹⁰	S	S
Sunroof – Power tilt/slide	–	–	–	O ¹
Trip/fuel computer	S	S	S	S
Windows – Electronically operated front and rear with one-touch lowering/closing on driver's side and global closing	S	S	S	S
Ambient interior LED lighting (red)	–	–	S	S
4-way power adjustable driver's seat	–	–	–	O ¹

Seats

	Ambiente	Trend	Sport	Titanium
Front seats – Comfort-style	S	S	–	–
Front seats – V-shape sports seats	–	–	S	S
Seats – Partial leather-trimmed (only available with sports-style front seats)	–	–	–	S
Rear seat – 60:40 split back and cushion	S	S	S	S
Rear seat – Folding centre armrest, with two integrated cup holders	–	–	S	S
Driver side manual lumbar adjust	–	S	S	S

Safety and security

	Ambiente	Trend	Sport	Titanium
Airbags – driver and passenger individual single stage front airbags and side thorax airbags	S	S	S	S
Airbags – side curtain airbags for front and rear seats	S	S	S	S
Intelligent Protection System (IPS)	S	S	S	S
Anti-lock braking system (ABS) with Electronic Brake-force Distribution (EBD)	S	S	S	S
Torque Vectoring Control	S	S	S	S
Dynamic Stability Control (DSC) with Traction Control and Emergency Brake Assist (EBA)	S	S	S	S
Emergency Brake Lights (Automatic flashing of brake lights under heavy braking)	S	S	S	S
Remote central locking	S	S	S	S
Immobiliser – passive anti-theft system	S	S	S	S
Hill Launch Assist	S	S	S	S

Mechanical features

	Duratec 1.6L Ti-VCT DOHC	Duratec 2.0L Ti-VCT GDI	Duratorq 2.0L TDCI Diesel
Maximum power output – ISO (kW/rpm) ⁴	92kW @ 6300rpm	125kW @ 6600rpm	120kW @ 3750rpm
Maximum torque – ISO (Nm/rpm) ⁴	159Nm @ 4000rpm	202Nm @ 4450rpm	340Nm @ 2000-3250rpm

Fuel

	Duratec 1.6L Ti-VCT DOHC	Duratec 2.0L Ti-VCT GDI	Duratorq 2.0L TDCI Diesel
Fuel type	91-98 RON	91-98 RON	Diesel
Fuel consumption – L/100km (ADR 81/02 combined cycle) ⁵	6.2 (Man) 6.6 (Auto)	6.6 (Trend, Sport Auto), 6.7 (Titanium) 7.2 (Trend, Sport Manual)	5.5 (Auto)
CO ₂ emissions (g/km) ⁵	144 (Man) 154 (Auto)	154 (Trend, Sport Auto) 156 (Titanium) 167 (Trend, Sport Manual)	144 (Auto)
Emission level	Euro stage 4	Euro stage 4	Euro stage 4
Fuel tank capacity (litres)	55	55	60
Ford Easy-Fuel capless refuelling system	S	S	S

Engine

	Ambiente	Trend	Sport	Titanium
Duratec 1.6L Ti-VCT DOHC, 4-cylinder 16V engine	S	–	–	–
Duratec 2.0L GDI, 4-cylinder 16V engine	–	S	S	S
Duratorq 2.0L TDCI DW10 Diesel engine	–	O ⁶	O	O

Transmission

	Ambiente	Trend	Sport	Titanium
Manual – 5-speed (5 Door Hatch)	S	S	S	–
Manual – 5-speed (4 Door Sedan)	–	–	–	–
PowerShift [®] automatic with 6-speed sequential sports shift (5 Door hatch)	O ⁷	O	O	S
PowerShift [®] automatic with 6-speed sequential sports shift (4 Door Sedan)	S	S	S	S

Steering

	Ambiente	Trend	Sport	Titanium
Hydraulic Power-Assisted Steering (HPAS)	S ⁸	–	–	–
Electric Power-Assisted Steering (EPAS)	S ⁹	S	S	S

Suspension

	Ambiente	Trend	Sport	Titanium
Sports suspension	–	–	S	S

Technology

	Ambiente	Trend	Sport	Titanium
Ford Eco Mode (driver information system)	–	–	S	S

S = Standard. O = Options that can be ordered before a vehicle is manufactured.

1. Available for Titanium model only, as part of optional Sports Executive Pack. Sports Executive Pack for Titanium petrol model will be available from November 2011. 2. Connection cables sold separately. Please refer to ford.com.au for mobile phone compatibility. 3. Bluetooth[®] is a registered trademark of Bluetooth SIG Inc., and is used under licence. iPod is a trademark of Apple Inc. 4. All performance data for petrol models measured using 95RON fuel. 5. Figures obtained from controlled tests using ADR 81/02 (combined). Actual fuel consumption and emissions will depend on many factors including driving habits, prevailing conditions and your vehicle's equipment, condition and use. 6. Focus Trend diesel with automatic transmission will be available from October 2011. 7. Focus Ambiente with automatic transmission will be available from November 2011. 8. Hydraulic Power Assisted Steering standard on Ambiente with 6 speed PowerShift[®] automatic transmission. 9. EPAS not available on the 1.6L Sigma Ti-VCT with 6 speed PowerShift[®] automatic transmission. 10. Available for Trend model as part of optional Convenience Pack.



Quality

We design and build your Ford to feel as good after many years of service as it did the day you picked it up. And to drive just as beautifully, too.



Sustainability

Using advanced technology, we're committed to creating vehicles with improved fuel economy, reduced CO₂ emissions and a lower overall cost of ownership.



Safety

Ford's Intelligent Protection System uses sophisticated technology designed to help prevent an accident and, if one should happen, to protect you.



Smart

Cars that park themselves, windshield wipers that know when it's raining – just some of the many clever solutions from Ford that make life a little easier.

Speak to your Ford Dealer today about how we can help you make the most out of your vehicle ownership experience.

3 year/100,000km new car warranty.*

For three years or 100,000km, whichever comes first, your Ford is covered against any defects in factory materials or workmanship. This also applies to Genuine Ford Accessories you may have had fitted before you took delivery.

5 year warranty against perforation corrosion.*

It's reassuring to know that the original body of your gleaming new Ford is guaranteed against perforation corrosion for the first five years of its life. If perforation corrosion occurs, we'll fix it for free.

myFord Warranties & Insurance.

When you first turn the key of your brand new Ford Focus you want to do so without a care in the world. Our range of myFord products gives you that extra peace of mind. For more information about myFord Warranties and Insurance, visit your participating Ford Dealer for further details on the plans that best suit your needs. Terms, conditions and eligibility criteria apply.

Want to contact us?

For answers to your questions, or help with any concern, contact our Customer Relationship Centre on 13 FORD (13 3673).

Running a fleet?

Our Ford Business Centre is available to assist fleet customers with information on Ford products and services. Call 1300 13 13 30.

Visit us on the web.

If you want more information on Ford or our entire product range, visit us at ford.com.au.

myFord Capped Price Servicing

Your new Ford vehicle now gives you access to myFord Capped Price Servicing, which means it makes even more sense to have your Ford looked after by the people who know your Ford back to front, inside and out. With myFord Capped Price Servicing, Ford will publish the maximum price you will pay for a logbook service at participating Authorised Ford Dealers for all vehicles built from 2007 up to 6 years or 105,000 kilometres, whichever comes first.

In addition, when vehicles are serviced under myFord Capped Price Servicing, Retail and Small Business Customers will also receive 12 months myFord Standard Roadside Assistance (RRP \$90).

For more details visit your local Ford Dealer or visit ford.com.au/myfordcps for full terms and conditions.

Click to Request



Quote



Hot Deals



Test Drive

*Conditions and exclusions apply. See your authorised Ford Dealer for details.

This brochure details specifications and features of the all-new Focus available from August 2011, with the exception of the Focus Trend diesel with automatic transmission which will be available from October 2011 and the Focus Ambiente with automatic transmission which will be available from November 2011. Please consult your Ford Dealer for the most recent specifications and availability information. This brochure is designed to provide you with a general introduction to the Ford Products (including available optional equipment) referred to, and should be read in conjunction with the latest specification sheet. Because of changes in conditions and circumstances Ford* reserves the right, subject to all applicable laws, at any time, at its discretion, and without notice, to discontinue or change the features, designs, materials, colours and other specifications and the prices of its products, and to either permanently or temporarily withdraw any such products from the market without incurring any liability to any prospective purchaser or purchasers. The latest specification sheet should be referred to for information on the availability, ordering and use of optional equipment. Always consult an authorised Ford Dealer for the latest information with respect to features, specifications, prices, optional equipment and availability before deciding to place an order.

*FORD MOTOR COMPANY OF AUSTRALIA LIMITED. (A.B.N. 30 004 116 223) Registered Office: 1735 Sydney Road, Campbellfield, Victoria 3061, Australia. Printed June, 2011.



Feel the difference

ford.com.au