

**MONDEO**



**Go Further**

## A bold statement

Some designs are blessed with a unique talent to stand out from the pack. Introducing the Ford Mondeo.



Mondeo Titanium hatch shown in Lunar sky.

With genuinely striking looks, the Mondeo displays real visual energy on the road and has an eye-catching presence in the car park. The Mondeo's appeal lies in its immediate visual impact, the sleek exterior styling cues and the unmistakable sense that all the proportions and details feel just right.

## Confident driving

Precision driving. It's what you'll experience each and every time you get behind the wheel of the Mondeo.



Mondeo Zetec hatch shown in Moondust Silver.

It means that whether you're heading out of the city for a weekend or simply powering through traffic on your way to the office, the responsive engine, precision ride and smooth handling will make every drive a pleasure.

**Mondeo wagon. Enjoy the wide open spaces.**

For those who pack more into life you'll be pleased to know the Mondeo range gives you a vehicle that gives you the flexibility to pack more of whatever you need.



With class-leading cargo capacity the Mondeo wagon gives you a whopping 2163 (SAE) litres of space.



The flexibility of a 60/40 split rear seat provides an endless number of cargo carrying options.

The Mondeo transforms the wagon into the ultimate combination of style and versatility, and with class-leading cargo capacity you have more than enough room for passengers and all their gear.

## Experience intelligent design

A car that can detect when you're drowsy\* and that allows you to make phone calls without lifting your hands off the steering wheel are just some of the features that ensures your experience behind the wheel of the Mondeo is everything the exterior design promises.



Mondeo Titanium interior shown.



The steering wheel mounted controls means that everything from the Mondeo's audio system to the Human Machine Interface (HMI) is at your fingertips.



### Premium Human Machine Interface (HMI):

The HMI is an intuitive digital command centre allowing you to control many of the car's features and systems.

The luxurious interior is contemporary in design and exudes a real feeling of comfort and warmth. The thoughtfully laid out interior means that not only has every little driver detail been carefully considered, but they are all at your fingertips for total control.

\*Driver Alert is standard on Mondeo Titanium. \*\*Standard on Mondeo Zetec and Titanium.

## Exceptional style

Featuring Alcantara leather-trim seats, the Mondeo Titanium allows both driver and passengers to sit back and experience first class comfort and luxury.



Mondeo Titanium interior shown.

You'll find an array of interior comforts inside the Mondeo, with heated leather-trim seats,\* and dual-zone climate control,† just two of the features that lift the experience to new heights.

\*Standard on Mondeo Titanium. †Standard on Mondeo Zetec and Titanium.



**iPod integration:**

With a 3.5mm auxiliary jack and USB port to play MP3 music files, simply connect your iPod and control it through the Mondeo's steering wheel controls.



**Power Start button\***

Standard on Titanium, security-encrypted sensors automatically ready the engine when they detect the key is nearby. Push the Ford Power Start button to start your car.

**Creature comforts**

All the needs of the driver have been considered both in terms of comfort and the technology which makes every drive easier.



**Bluetooth® with Voice Control:**

Standard across the entire Mondeo range, imagine having a whole selection of your vehicle's functions and operations at your control simply by voicing a command. From controlling the vehicle's interior climate temperature to safely making hands-free calls on the move.



Mondeo Titanium interior shown.



**Dual-Zone Climate Control:**

Individual 'zones' allow different temperature to be set for driver and passenger, ensuring the ultimate in personal comfort.



**Smart Key#**

Simply walk up to the door or boot and pull the handle. Even if your key is in your pocket or bag, the system will detect its unique security code – unlocking the vehicle and de-activating the alarm.

The Mondeo's Human Machine Interface (HMI) lets the driver control features and systems of the vehicle via the steering wheel mounted controls. Like being able to control the Mondeo Titanium's Adaptive Cruise Control, view and adjust the trip computer, or select and play your favourite MP3 music tracks on a connected USB stick. Then there are those 'creature comforts' which at first surprise you before you realise that you can't live without them, like front and rear parking sensors, or the convenience and safety of being able to answer your mobile phone hands-free thanks to Bluetooth® technology.

\*iPod is a trademark of Apple Inc. iPod integration is standard on Mondeo Zetec and Titanium. Requires connection cable sold separately. \*Bluetooth® is a registered trademark of Bluetooth SIG Inc., and is used under licence. #Available on Mondeo Titanium. +Available on Mondeo Zetec and Titanium.



**Adjustable Speed Limiting Device (ASLD):**

Avoid unintentional speeding, simply turn on the ASLD and set the Mondeo's maximum travel speed. When activated, the Mondeo will not accelerate past the designated speed.



**Headlights that turn corners:**

Based on your speed and how much you turn the steering wheel your headlights swivel to illuminate the road as you travel around a corner.

**Technology with you in mind**

The technology on board the Mondeo means your drive is safer, more comfortable and more enjoyable.



**Adaptive Cruise Control:**

Cruise control that automatically 'adapts' the car's speed to keep your chosen distance from the car in front. Should the car in front slow down, your speed drops. When traffic speeds up, you automatically return to your cruising speed.



**Rain sensing wipers:#**

Front wipers that automatically turn on when it begins to rain. A sensor on the front windscreen detects if and how much rain is falling, and based on your speed, the wipers automatically function to give you maximum visibility.



Mondeo Zetec hatch shown in Candy Red.



**Park Assist.**

The sensors produce an audible warning to help you judge the distance between your car and any obstacle behind or in front of you.

Technology is really only useful when it's meaningful, and provides you with genuine benefits when you're behind the wheel. Like wipers that automatically turn on when it begins to rain, parking sensors that alert you when you are close to another object, and headlights that swivel to illuminate the road as you travel around a corner. Mondeo's technology enhances your driving experience, your driving enjoyment, as well the safety and security for you and your passengers.

\*Available on Mondeo Titanium. #Available on Mondeo Zetec and Titanium.



## Advanced safety

Look beyond the sleek lines and you'll find that the same levels of engineering that went into the design of the Mondeo also gives it one of the highest ANCAP safety ratings on the road.



- 1 Driver and front passenger airbags
- 2 Front seat side airbags
- 3 Side curtain airbags
- 4 Driver's knee bolster airbag
- 5 Collapsible steering column and pedal intrusion prevention system

- 6 Side impact door beams - front and rear
- 7 Rigid steel safety cage
- 8 Hazard lights activated under heavy braking
- 9 Engine compartment cross-beam and energy-absorbing subframe

- 10 Anti-lock Braking System (ABS) with Electronic Brakeforce Distribution (EBD)
- 11 Dynamic Stability Control (DSC) with Traction Control and Emergency Brake Assist
- 12 Front and rear disc brakes
- 13 Forward Collision Warning\*

- 10
- 11
- 12



Australia's highest safety rating.

In addition to a long list of standard features, you have added peace of mind knowing that the entire Mondeo range has a 5-star ANCAP safety rating.

Overseas model shown.



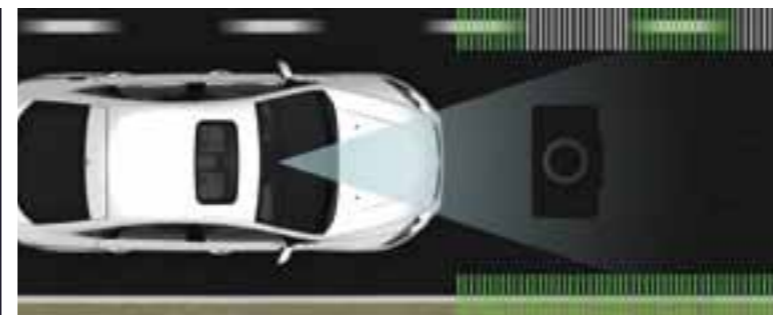
### Blind Spot Information System (BLIS):

A radar either side of the vehicle constantly monitors the car's blind spots, notifying the driver via a light in either side mirror of approaching side traffic.



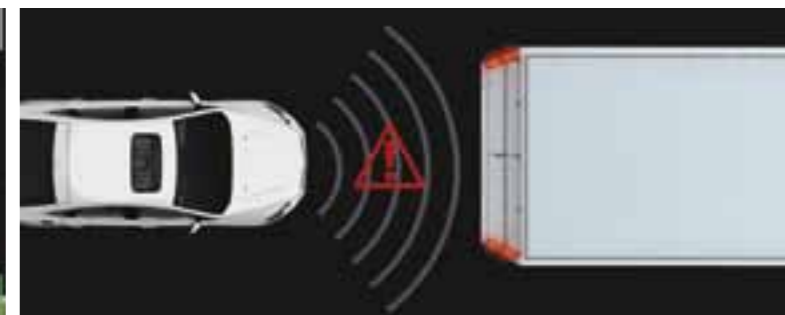
### Driver Alert:

A series of systems within the car which can detect driver drowsiness and issue audible warnings via the HMI. Added peace of mind for those long drives.



### Lane Departure Warning (LDW):

A camera at the front of the car detects lane markings and warns the driver when the vehicle unintentionally veers from the lane.



### Collision Mitigation:

If an accident appears imminent, Collision Mitigation will automatically start braking. However, if you take an action yourself then the system remains passive to ensure you remain in total control.

\*Available on Mondeo Titanium.

## EcoBoost engine technology

Ford's vision for sustainability, in tandem with smart engine technologies give you a 4 cylinder engine that improves fuel economy, without compromising on power.



### EcoMode.

Continually assesses the effect of your driving behaviour on fuel consumption - including speed, gear shifting and anticipation levels, plus your ratio of short trips. Smart software then provides useful advice on achieving better fuel economy according to your driving style.



### Ford Easy-Fuel.

Capless refuelling system that only allows the correct fuel to be used and removes the need for handling dirty fuel caps.



Mondeo Titanium hatch shown in Midnight Sky. Engine dramatisation shown for illustrative purposes.



Imagine an engine that dramatically increases fuel efficiency, cuts emissions and improves performance. The EcoBoost petrol engine, available on the Mondeo Zetec and Titanium hatch models, does all three. Yet another example of Ford's smart engine technology, the EcoBoost combines direct injection technology and turbo-charging with a petrol engine. Only small amounts of highly pressurised fuel are injected into the combustion chamber, resulting in fuel efficiency improvements of up to 20% and up to 15% lower emissions. And as you'd expect, the turbo-charged performance adds another level of excitement to every drive.

## Mondeo diesel. Consider the environment.

The Mondeo proves that a diesel can be as stylish and sporty as it is economical.



### Duratorq TDCi.

The Mondeo TDCi features an advanced 2.0 Litre Duratorq 4-cylinder turbo diesel engine which, at a miserly 5.9 litres per 100 kilometres; delivers incredible economy. Performance wise, the engine features advanced common rail multi-point fuel injection, so you're guaranteed a silky, impressively quiet driving experience backed up by plenty of torque when you need it. Diesel is available across the Mondeo range in both hatch and wagon.



### PowerShift® technology.

Imagine two clutches, working in tandem to engage gears at lightning quick speeds. While one clutch connects with the 'even' gears the other is simultaneously preloaded with the next 'uneven' gear. This technical teamwork results in a smoother drive and more efficient delivery of fuel to the engine, which means you enjoy greater fuel economy.



Mondeo Zetec Diesel shown in Ink Blue.

\*5.9L/100km figure based on Mondeo LX TDCi hatch obtained from controlled testing using ADR 81/02. Actual fuel consumption will depend on many factors including driving habits, prevailing conditions and your vehicle's equipment, condition and use. \*PowerShift® is standard when optional diesel or EcoBoost petrol engine is ordered.

## Mondeo vehicle range

No matter what your lifestyle, the Mondeo range has a vehicle that's just perfect for you.



**MONDEO LX**



**MONDEO ZETEC**



**MONDEO TITANIUM**



## Mondeo LX

With an array of technology such as being the only car in its class with Bluetooth® and voice control as standard, the Mondeo exudes confidence and sophistication. Every Mondeo also achieves the highest possible 5-Star ANCAP safety rating, offering greater peace of mind.



### LX standard features

- 2.3L Duratec 4 cylinder petrol engine with 6-speed auto
- Bluetooth® Hands Free\*
- Voice Control
- Dynamic Stability Control
- ABS and 7 airbags
- Cruise Control
- Park Assist
- Air conditioning
- 3.5mm auxiliary input jack for MP3 players
- Leather wrapped steering wheel
- Belt minder for the front seats
- 8 speaker sound system
- Steering wheel mounted audio controls
- Centre console sliding cover

\*Bluetooth® is a registered trademark of Bluetooth SIG Inc., and is used under licence.

Sedan shown in Dark Mikastone, wagon shown in Ink Blue.

### Bluetooth® with VoiceControl!

Standard across the range, allowing you to control much of the vehicle's technology, including your phone, through the sound of your voice.

### Parking Assist.

Front and rear sensors make parking and manoeuvring both safer and easier.

### Optional Diesel engine with PowerShift.®

The Mondeo is a joy to drive. Choose from a range of engines and transmissions to suit your individual driving style, including an advanced 2.0L Duratorq 4 cylinder turbo diesel. Available on all models.

### Cruise Control.

Takes the work out of those long drives, making the journey more enjoyable.

### Ford Easy-Fuel.

Capless refuelling system that only allows the correct fuel to be used and removes the need for handling dirty fuel caps.

### 5-Star ANCAP rating.

Safety features include ABS with Electronic Brakeforce Distribution, Dynamic Stability Control, Traction Control and 7 airbags.





Zetec interior shown.

## Mondeo Zetec

Truly a class above, the Mondeo Zetec is for those who want more.



### Zetec standard features (In addition to LX)

- 2.0L EcoBoost 4 cylinder petrol engine with 6-speed PowerShift® auto\*
- Sony premium sound system
- Rain sensing wipers
- 17" alloy wheels#
- Perimeter alarm
- Dual-Zone Climate Control
- Global open/close for the windows
- Automatic headlamps
- Front fog lights
- Enhanced front grille
- Power driver seat height adjustment

\*Petrol engine is not available on Zetec or Titanium Wagon bodystyle. These models have diesel engine as standard. 2.0L EcoBoost™ engine is not available on Zetec and Titanium Wagon models. Zetec and Titanium Wagon models have 2.0L Diesel engine as standard. \*iPod connection cable sold separately. #Set of four. +Available on Mondeo Zetec and Titanium.

Sedan shown in Panther Black, wagon shown in Moon dust Silver.

### Premium Human Machine Interface (HMI).

Control many of the Mondeo's features through the intelligent HMI, including audio system, trip computer and vehicle settings.

### USB music port with iPod integration.

A USB port to play MP3 music files through the audio system. Plug in your USB stick or iPod\* and play your favourite tracks that appear on the car's dashboard display.

### Sony premium sound system.

Featuring 9 speakers and a 265-watt amplifier, you'll enjoy optimum sound reproduction, which is rich and detailed even at low volume.

### Rain sensing wipers.

Front wipers that automatically turn on when it begins to rain. A sensor on the front windscreen detects if and how much rain is falling, and the wipers automatically function to give you maximum visibility.

### 17" alloy wheels#

Eye-catching 5 spoke alloy wheels complement the Mondeo's sleek and smooth lines.

### Dual-Zone Climate Control:

Individual 'zones' allow different temperature to be set for driver and passenger, ensuring the ultimate in personal comfort.





Titanium interior shown.

## Mondeo Titanium

Titanium is the pride of the Mondeo fleet, with greater technology and safety features coupled with a commanding presence. All others are left wanting.



### Titanium standard features (In addition to Zetec)

- LED daytime running lights
- Second-row side air conditioning
- Aluminium roof rails (wagon only)
- Sports styling body kit
- Driver Alert
- Automatic speed limiting device
- Automatic high beams
- Blind spot information system
- Sunroof
- 18" alloy wheels\*
- Sports suspension
- Body styling kit
- Smart Key
- Adaptive Cruise Control
- Dynamic headlights
- Ford Power Start button
- Heated leather-trim seats

\*Set of four.

Sedan shown in Lunar Sky, wagon shown in Dark Mikastone.

#### Adaptive Cruise Control.

Cruise control that automatically 'adapts' the car's speed to keep your chosen distance from the car in front.



#### Cornering headlights.

Based on your speed and how much you turn the steering wheel your headlights swivel to illuminate the road as you travel around a corner.



#### Heated leather seats.

Standard on the Titanium the heated leather seats are perfect for when the colder weather hits.



#### 18" alloy wheels.\*

Standard on the Titanium these 5-spoke alloy wheels add a sportier edge to the Mondeo.



#### Lane Departure Warning (LDW).

Avoid unintentionally veering from the lane you are driving in with LDW. Cameras in the front of the vehicle determine the size of the lane and notify you if you accidentally drift away.



#### Smart Key.

Simply walk up to the door or boot and pull the handle. Even if your key is in your pocket or bag, the system will detect its unique security code – unlocking the vehicle and de-activating the alarm.



## Exterior colours and interior seat trims

With a great choice of seat trims and colours available you can create a feel and mood for your vehicle that's just right for you.

### EXTERIOR COLOURS



Ink Blue\*



Panther Black\*



Frozen White



Moondust Silver\*



Lunar Sky\*\*



Midnight Sky\*



Dark Mikastone\*

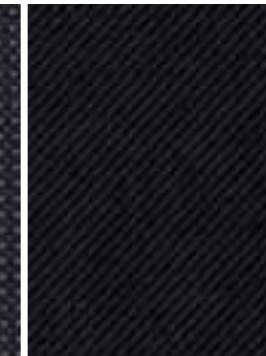


Candy Red\*\*

### INTERIOR TRIMS



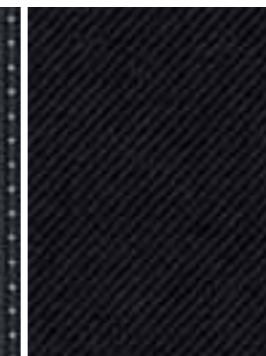
**LX**  
Minute in Infinity Blue



Twill in Ebony



**Zetec**  
Daphne in Silver



Twill in Ebony



**Titanium**  
Alcantara/leather in Ebony  
with Silver stitching



Napoli Leather  
in Ebony

### WHEELS



**LX**  
16" x 6.5" steel wheel



**Zetec**  
17" x 7.5" alloy



**Titanium**  
18" x 8" alloy

\*Not available on LX models. \*\*Prestige paint is an option that incurs an additional charge.

Mondeo Titanium hatch shown for illustrative purposes. Every effort has been made to depict vehicle colours and trims as realistically as possible in this brochure, however some variation may occur due to printing.



## Personalise your Mondeo. The choice is yours.

The Ford Vehicle Personalisation accessory range lets you personalise your Mondeo to perfectly suit your needs.



Mondeo Titanium hatch in Frozen White shown with Rhino-rack multi-fit carry bars and bonnet protector.<sup>4</sup>

**Carry bars and bike carrier** (sold separately) for easy transport of bikes of all sizes.



**Garmin Nuvi 1250 portable satellite navigation system<sup>4</sup>**



**Towpack.**



**Cargo barrier - wagon.**



**Waterproof boot liner** helps keep boot area clean and dry.



Accessories	LX	Zetec	Titanium
<b>Exterior protection</b>			
Bonnet Protector	A	A	A
Mudspats - front and rear <sup>1</sup>	A	A	-
Weathershields - front and rear <sup>1</sup> (hatch only)	A	A	A
License Plate Covers	A	A	A
<b>Interior styling, comforts and storage</b>			
Carpet Mats <sup>2</sup>	A	A	-
Rubber floor mats <sup>3</sup>	A	A	-
Boot scuff guard (hatch only)	A	A	A
Waterproof boot liner (hatch only)	A	A	A
CD Wallet	A	A	A
Cargo Barrier (wagon only)	A	A	A
Dog guard (wagon only)	A	A	A
Load protection Net	A	A	A
Reversible Carpet Mat	A	A	A
<b>In car electrical</b>			
Garmin Nuvi 1250 portable satellite navigation system <sup>4</sup>	A	A	A
Garmin Nuvi 500 portable satellite navigation system <sup>4</sup>	A	A	A
Reverse camera system <sup>4</sup>	A	A	A
<b>Towing and carrying</b>			
Towpack 1200kg (includes wiring, module and towball) <sup>5</sup>	A	A	A
Towpack 1600kg (includes wiring, module, towball and load levelling kit) <sup>6</sup>	A	A	A
Rhino-Rack Luggage Carrier - small/medium <sup>4,7</sup>	A	A	A
Rhino-Rack multi-fit carry bars <sup>4</sup>	A	A	A
Carry Bars	A	A	A
Bike Carrier	A	A	A
Rhino-Rack Bike Carrier <sup>4</sup>	A	A	A
<b>Exterior styling</b>			
Wagon spoiler	A	A	-
16" alloy wheels <sup>2</sup>	A	-	-

A = Accessory that can be added at any time.

<sup>1</sup> Front and rear sets sold separately <sup>2</sup> Set of two. <sup>3</sup> Front and rear mats sold separately. <sup>4</sup> This accessory is a Supplier Branded Accessory and is not manufactured or warranted by Ford. The warranty is provided by the manufacturer of the accessory. Contact your authorised Ford dealer for details of the accessory manufacturer's warranty applicable to this accessory. <sup>5</sup> Subject to State and Territory regulations <sup>6</sup> Subject to State and Territory regulations. Only available with optional TDCI engine. <sup>7</sup> Must be attached to Rhino-Rack multi-fit carrier bars.

With a heap of accessory combinations to make your experience with the Mondeo even better, you truly can make the Mondeo your own. For a full list of available accessories visit [www.ford.com.au/mondeo](http://www.ford.com.au/mondeo).

## Mechanical specifications

Engine type	2.3 Litre Duratec 16V	2.0 Litre EcoBoost™ 16V	2.0 Litre Duratorq 16V Turbo Diesel		
Applicable Models (hatch)	LX	Zetec & Titanium	LX, Zetec & Titanium		
Applicable Models (wagon)	LX	-	LX, Zetec & Titanium		
Max power output ISO (kW/rpm) <sup>1</sup>	118 / 6500	149 / 6000	120 / 4000		
Max torque ISO (Nm/rpm) <sup>1</sup>	208 / 4200	300 / 1750-4500	340 / 1750-2500		
Cylinders	4 in line	4 in line	4 in line		
<b>Fuel</b>					
Consumption - Combined (L/100km - rounded) <sup>2</sup>	9.5	8.0	5.9 <sup>3</sup> /6.2 <sup>4</sup>		
CO <sub>2</sub> emissions (g/km) <sup>2</sup>	227	187	157 <sup>3</sup> /165 <sup>4</sup>		
Recommended Fuel	Petrol 91-98RON	Petrol 91-98RON	Diesel		
E10 Compliant	Y	Y	N/A		
Fuel tank capacity (litres)	70	70	70		
Ford Easy-Fuel®	S	S	S		
<b>Suspension &amp; brakes</b>					
Front	Independent MacPherson struts, lower control arms with hydro-bushing isolated subframe and anti-roll bar				
Rear	Independent Control Blade multi-link system, isolated subframe with anti-roll bar				
Brakes	Four disc brakes - ventilated front and solid rear				
<b>Towing capacities (kg)<sup>5</sup></b>					
Maximum towing capacity (braked)	1200	1200	1600 <sup>6</sup>		
Maximum towing capacity (unbraked)	750	750	750		
<b>Kerb weight (kg)<sup>7</sup></b>		<b>Hatch</b>		<b>Wagon</b>	
	Petrol	EcoBoost	Diesel	Petrol	Diesel
LX	1532	-	1505	1552	1612
Zetec	-	1581	1613	-	1636
Titanium	-	1591	1638	-	1649
<b>Interior dimensions (mm)</b>		<b>Hatch</b>		<b>Wagon</b>	
Front headroom	996		996		
Front leg room	1126		1126		
Front shoulder room	1448		1448		
Rear headroom	965		1004		
Rear leg room	950		950		
Rear shoulder room	1421		1421		
<b>Exterior dimensions (mm)</b>		<b>Hatch</b>		<b>Wagon</b>	
Overall length	4784		4837		
Overall width <sup>8</sup>	1886		1886		
Overall height	1500		1548		
<b>Luggage capacity (L)</b>		<b>Hatch</b>		<b>Wagon</b>	
Seats upright (SAE)	816		1005		
Rear seats folded (SAE)	1919		2163		

## Specifications and options

Engine and transmission	LX hatch	LX wagon	Zetec hatch	Zetec wagon	Titanium hatch	Titanium wagon
<b>2.3L Duratec 16V</b>	S	S	-	-	-	-
Durashift 6-speed auto	S	S	-	-	-	-
<b>2.0L EcoBoost 16V</b>	-	-	S	-	S	-
6speed dual clutch PowerShift® auto	-	-	S	-	S	-
<b>2.0L Duratorq 16V Turbo Diesel</b>	O	O	O	S	O	S
6-speed dual clutch PowerShift® auto	S	S	S	S	S	S

S = Standard. A = Accessory that can be added at any time. O = Optional

1. Power and torque figures (for petrol engines) measured using premium unleaded fuel (95 RON). 2. Figures obtained from controlled tests using ADR 81/02. Actual fuel consumption and CO<sub>2</sub> emissions will depend on many factors including driving habits, prevailing conditions and your vehicle's equipment, condition and use. 3. Figure applicable to LX hatch. 4. Figure applicable to Zetec and Titanium hatch also LX, Zetec and Titanium wagons. 5. Subject to State and Territory regulations. 6. When fitted with a Genuine Ford heavy duty towpack. Towball download and rear axle limits must not be exceeded. Please refer to your Ford Dealer for advice. 7. Approximate kerb weights only and includes 90% fuel to full capacity and no occupants or luggage. 8. Excludes exterior mirrors. 9. Set of four.

## Specifications and options (continued)

<b>Ride and handling</b>	<b>LX</b>	<b>Zetec</b>	<b>Titanium</b>
Lowered sports suspension	–	–	S
Self levelling suspension (wagon only)	S	–	–
16" x 6.5" steel wheels and 215/55 R16 tyres <sup>9</sup>	S	–	–
17" x 7.5" Y-spoke alloy wheels with 215/50 R17 tyres <sup>9</sup>	–	S	–
18" x 8" Y-spoke aggressive sports alloy wheels with 235/45 R18 tyres <sup>9</sup>	–	–	S
16" steel mini-spare wheel with T125/90 R16 tyre <sup>10</sup>	S	S	S
<b>Exterior</b>			
Prestige paint	O	O	O
Front fog lamps	–	S	S
Rear fog lamps	S	S	S
Cornering headlights	–	–	S
LED daytime running lights	–	–	S
'Follow me home' lighting	S	S	S
Sports body styling kit (front and rear bumpers, side skirts, unique grille and fog lamps)	–	–	S
Single chrome tip exhaust	–	–	S
Side mirrors with puddle lamps	–	–	S
Side mirrors with integrated indicators	S	S	S
Tinted glass	S	S	S
Roof rails with black finish (wagon only)	S	S	–
Roof rails with chrome finish (wagon only)	–	–	S
<b>Seating</b>			
Cloth seat trim	S	S	–
Alcantara / leather seat trim with variable heated front seats	–	–	S
Driver and front passenger sports seats	–	–	S
Driver's seat manual height adjust (2-way)	S	–	–
Driver's seat power height adjust (2-way)	–	S	S
Driver side manual lumbar adjust	S	S	S
Passenger side manual lumbar adjust	S	S	S
Driver seat back map pocket	S	S	S
Passenger seat back map pocket	S	S	S
60/40 split rear bench seat and seat back	S	S	S
Folding centre rear seat arm rest	S	S	S
<b>Instrumentation and controls</b>			
Human Machine Interface (HMI) - with standard cluster display	S	–	–
Premium Human Machine Interface (HMI) - with Ford Convers+ colour cluster display	–	S	S
Multi-function display including distance to empty, average speed, average fuel consumption, outside air temperature	S	S	S
Cruise Control	S	S	–
Adaptive Cruise Control	–	–	S
Blind Spot Information System (BLIS)	–	–	S
Lane Departure Warning (LDW)	–	–	S
Driver Alert	–	–	S
Leather wrapped steering wheel	S	S	S
Steering wheel mounted audio controls	S	S	S
Smart Key with 'Ford Power' starter button	–	–	S
Power front windows with driver one-touch up and down and global open / close	S	S	S
Power rear windows with global open / close	–	S	S
Automatic headlamps ON/OFF feature	–	S	S
Automatic high beams ON/OFF feature	–	–	S

<b>Comfort and convenience</b>			
Keyless entry with two remote control flip keys	S	S	–
Smart Key with two remote control keys for keyless start	–	–	S
Air-conditioning	S	S	S
Dual-Zone Climate Control with rear compartment air duct	–	S	S
Automatic front windscreen wipers with rain sensor and variable sensitivity adjustment	–	S	S
Rear windscreen wiper with fixed intermittent and auto wipe features	S	S	S
Sunroof with tilt/slide functionality	–	–	S
Driver and front passenger sunvisors with vanity mirror	S	–	–
Driver and front passenger sunvisors with illuminated vanity mirror	–	S	S
Front map lights	–	S	S
Front Submarine Lighting	–	–	S
Second row map/reading lights	–	–	S
Electrochromatic rear vision mirror	–	–	S
Carpet mats (front)	S	S	–
Carpet mats (front and rear)	–	–	S
Roof mounted sunglasses storage	S	S	–
Centre console with storage box, hinged armrest and two front cupholders	S	S	S
Accessory socket - 12V power point	S	S	S
Cargo blind (wagon models)	S	S	S
Driver's footrest	S	S	S
<b>Audio</b>			
Single slot CD and AM/FM radio with 8 speakers	S	–	–
Sony premium sound system - Single slot CD and AM/FM radio with 9 speakers	–	S	S
Portable music player connection socket (3.5mm auxiliary input) <sup>11</sup>	S	S	S
Advanced Bluetooth® Hands-Free <sup>12</sup>	S	S	S
Voice Control System	S	S	S
USB music port	–	S	S
<b>Safety and security</b>			
Intelligent Protection System including:			
Driver and front passenger airbags	S	S	S
Side front airbags <sup>13</sup>	S	S	S
Side curtain airbags	S	S	S
Driver's knee bolster airbag	S	S	S
Collapsible steering column	S	S	S
Pedal intrusion prevention system	S	S	S
Pyrotechnic belt buckle pretensioners (front only)	S	S	S
Seat belt reminder system - driver and front passenger seats	S	S	S
Active neck injury protection system on front seats	S	S	S
Dynamic Stability Control <sup>14</sup> , with Emergency Brake Assist and Traction Control	S	S	S
Anti-lock Braking System (ABS) with Electronic Brakeforce Distribution (EBD)	S	S	S
Park Assist (front and rear parking sensors)	S	S	S
Remote central double locking	S	S	S
Immobiliser - passive anti-theft system	S	S	S
Perimeter alarm	–	S	S
Hill launch assist	S <sup>15</sup>	S <sup>15</sup>	S

S = Standard. A = Accessory that can be added at any time. O = Optional

10. If the spare wheel, rim or tyre size differs from the other wheels fitted, the vehicle should be driven with caution and the standard wheel and tyre fitted as soon as possible. 11. Requires connection cable sold separately.

12. Bluetooth® is a registered trademarks of Bluetooth SIG, Inc. and is used under licence. 13. Front seat side airbags protect front seat occupants only. 14. Dynamic Stability Control is also known as Electronic Stability Control. 15. Hill launch assist is only available on LX Diesel and Zetec Diesel models.



### Quality

We design and build your Ford to feel as good after many years of service as it did the day you picked it up. And to drive just as beautifully, too.



### Sustainability

Using advanced technology, we're committed to creating vehicles with improved fuel economy, reduced CO<sub>2</sub> emissions and a lower overall cost of ownership.



### Safety

Ford's Intelligent Protection System uses sophisticated technology designed to help prevent an accident and, if one should happen, to help protect you.



### Smart

Vehicles with smart, intuitive technologies designed to connect you to your world and many clever solutions that make life a little easier.

Speak to your Ford Dealer today about how we can help you make the most out of your vehicle ownership experience.

#### 3 year/100,000km new car warranty.#

For three years or 100,000km, whichever comes first, your Ford is covered against any defects in factory materials or workmanship. This also applies to Genuine Ford Accessories you may have had fitted before you took delivery.

#### 5 year warranty against perforation corrosion.#

It's reassuring to know that the original body of your gleaming new Ford is guaranteed against perforation corrosion for the first five years of its life. If perforation corrosion occurs, we'll fix it for free.

#### myFord Warranties and Insurance.

When you first turn the key of your brand new Ford you want to do so without a care in the world. Our range of myFord products gives you that extra peace of mind. For more information about myFord Warranties and Insurance, visit your participating Ford Dealer for further details on the plans that best suit your needs. Terms, conditions and eligibility criteria apply.

#### 12 months/15,000km service intervals.

Under normal driving conditions service intervals are 12 months or 15,000km, whichever occurs first.

#### Running a fleet?

Our Ford Fleet team is available to assist fleet customers with information on Ford products and services. Call 1300 13 13 30 or email [askfleet@ford.com](mailto:askfleet@ford.com)

#### Want to contact us?

For answers to your questions, or help with any concern, contact our Customer Relationship Centre on 13 FORD (13 3673) or email [customers@fordcrc.com.au](mailto:customers@fordcrc.com.au)

#### Visit us on the web.

If you want more information on Ford or our entire product range, visit us at [ford.com.au](http://ford.com.au)

#### myFord Capped Price Servicing.

Your new Ford vehicle now gives you access to myFord Capped Price Servicing, which means it makes even more sense to have your Ford looked after by the people who know your Ford back to front, inside and out. With myFord Capped Price Servicing, Ford will publish the maximum price you will pay for a standard A or B logbook service at participating Authorised Ford Dealers for all vehicles built from 2007 up to 6 years or 105,000 kilometres, whichever comes first.

In addition, when vehicles are serviced under myFord Capped Price Servicing, Retail and Small Business Customers will also receive 12 months myFord Standard Roadside Assistance (RRP \$90).

For more details visit your local Ford Dealer or visit [www.ford.com.au/myfordcps](http://www.ford.com.au/myfordcps) for full terms and conditions.



#### Click to Request



Quote



Hot Deals



Test Drive

#Conditions and exclusions apply. For more information visit [ford.com.au/newvehiclewarranties](http://ford.com.au/newvehiclewarranties)

This brochure details specifications and features of the MC Mondeo. Please consult your Ford Dealer for the most recent specifications and availability information.

This brochure is designed to provide you with a general introduction to the Ford Products (including available optional equipment) referred to, and should be read in conjunction with the latest specification sheet. Because of changes in conditions and circumstances Ford\* reserves the right, subject to all applicable laws, at any time, at its discretion, and without notice, to discontinue or change the features, designs, materials, colours and other specifications and the prices of its products, and to either permanently or temporarily withdraw any such products from the market without incurring any liability to any prospective purchaser or purchasers. The latest specification sheet should be referred to for information on the availability, ordering and use of optional equipment. Always consult an authorised Ford Dealer for the latest information with respect to features, specifications, prices, optional equipment and availability before deciding to place an order.

\*FORD MOTOR COMPANY OF AUSTRALIA LIMITED. (A.B.N. 30 004 116 223) Registered Office: 1735 Sydney Road, Campbellfield, Victoria 3061, Australia. Printed September, 2012. FMOND0024. MC Mondeo Brochure. FRD001516.



Go Further

[ford.com.au](http://ford.com.au)