

ALL-NEW MONDEO



Go Further

Introducing the all-new Ford Mondeo

With its intelligent technology and stylish design, Mondeo makes every journey feel special. It delivers exhilarating power without compromising fuel economy. It gives you greater stability and control, so you can worry less. Inside and out, Mondeo is a complete car.

4-5
The all-new Ford Mondeo

6-11
Smart Technology

Mondeo is packed with the latest smart features, like SYNC™2. So you can control your phone, music and climate control using your voice.

12-15
Efficient Performance

Why choose between power and fuel economy when you can have both? Whether you select the turbocharged 2.0L EcoBoost petrol engine or the refined 2.0L TDCi diesel engine, you don't have to compromise.

16-19
Quality Design

Classy, yet powerful, the design of the all-new Mondeo is alive with details, from the cutting-edge interiors to the first-class exterior fit and finish.

20-23
Safety

As you would expect, a car of this class puts a priority on advanced technology that works with you to ensure a high level of control and protection.

24-31
Choose your all-new Mondeo

- Ambiente
- Trend
- Titanium

32-35
Colours, Trims & Accessories

36-39
Specifying your all-new Mondeo



Mondeo Titanium hatch shown.

Attainable luxury

The all-new Mondeo was designed to challenge stuffy notions of luxury and sophistication. At Ford, we believe that luxury should be attainable by anyone who possesses great taste. And that sophistication simply means knowing what matters. So we went further to create a car that encapsulates the spirit of elegance without arrogance. Confidence without pretentiousness. And style with substance.



Mondeo Titanium hatch shown.

Smart Technology

The all-new Mondeo offers the features you want,
not just the ones you need.



Mondeo Titanium Interior shown.

Effortless control

Stay in touch with your world. Just say the word and SYNC™ 2 keeps you connected, while your hands stay safely on the wheel and your eyes on the road. And when you've reached your destination, take your hands off the wheel and Mondeo will steer itself in for a perfect park.†

9

SYNC™ 2

Hands-Free Phone and Music

With a few simple words you're in total control of your Bluetooth® phone. You can make calls, take calls and have your messages read out to you, then browse your music library by track, artist and genre all without lifting a finger.†



Enhanced Active Park Assist

Imagine. Perfect parallel parking without your hands ever touching the steering wheel. Enhanced Active Park Assist† not only helps you find the right parking space, it steers you in. Perfectly. Put the car into gear. Take your hands off the wheel. All you have to do is work the accelerator and brake. It even steers you out of your park, hands-free.



Emergency Assistance

Help when you need it most. SYNC™ 2 automatically calls emergency services and gives your GPS co-ordinates if you're in an accident that causes your airbags to activate or fuel pump to shut-off.*

Voice-activated Sat Nav & Climate Control

SYNC™ 2 puts your voice in control. With a simple command both driver and passenger can set and maintain their optimal temperature, while the voice-activated navigation system combines GPS technology and 3D mapping to guide you to your destination.

Touchscreen and media hub

Easy to navigate, the 8-inch touchscreen lets you set-up your SYNC™ 2 phone, music and climate settings to suit you. Two USB ports, an SD card slot and RCA port, mean you can also edit the screen's wallpaper using a photo you've just taken.

*Bluetooth® is a registered trademark of Bluetooth SIG Inc., and is used under licence. For SYNC™ compatibility, visit the www.ford.com.au/sync. †Local laws may prohibit the use of this feature while driving. Check your local road rules. *To use your Emergency Assistance your phone must be paired and in mobile reception range. †Available on Titanium models only.

Smart features

Whether you're driving in stop-start traffic, reversing out of a tight spot, or just trying to keep your younger driver's safer – Ford's latest smart technologies have got you covered.



Mondeo Titanium hatch shown.

Active City Stop†

When traffic is crawling along, it can be easy to miss someone suddenly stopping up front. In speeds of less than 40km/h, Active City Stop detects if the car in front has unexpectedly stopped and automatically applies the brakes if you don't.*

*Active City Stop may help avoid, or minimise the impact of a collision between speeds of 3.6 and 40km/h. It is not a substitute for driver alertness. Function may not operate in some driving and road conditions, or adverse weather. †Available on Trend and Titanium models only. ‡Driver-assist features are supplemental and do not replace the driver's judgement. §May help avoid or minimise the impact of a collision. It is not a substitute for driver alertness. Function may not operate in some driving and road conditions.

Pre-Collision Assist with Pedestrian Detection†

Designed to scan the traffic ahead and warn you if it senses the possibility of a collision. If a collision is likely, it can apply the brakes. This technology can also detect pedestrians.‡



BLIS (Blind Spot Information System)†

BLIS is your extra set of eyes. When sensors detect that a vehicle has entered your blind spot, an indicator light appears in your side mirror.



Rear View Camera†

Reverse like you have eyes in the back of your head. The Rear View Camera lets you clearly see what's behind you, while the beep of the rear parking sensors tells you how close you are. The system even automatically turns down your music so you can hear the beeps clearly.



MyKey®

Handing over the keys to the younger members of your family is a tough call. MyKey® helps make sure that they'll drive as if you were in the car with them. You can program it to remind them to put on seat belts, limit their speed, keep their music volume down and concentrate on the drive, not their phone.

Efficient Performance

An expensive-looking car shouldn't be expensive to run. We give you the choice of two of our most fuel efficient and powerful engines and fuel saving technologies. Then we top it all off with Ford's latest performance technologies that give you greater control and ease of driving.



Adaptive Cruise Control*

Cruise Control is great on the open road. But, even here, you can find traffic. So instead of having to turn the system on and off, the all-new Mondeo adapts. Sensors scan the traffic ahead, updating their positions 20 times a second. If they sense that traffic has slowed, your vehicle will slow also. When the traffic clears, it returns to your preset speed.

Mondeo Titanium hatch shown.



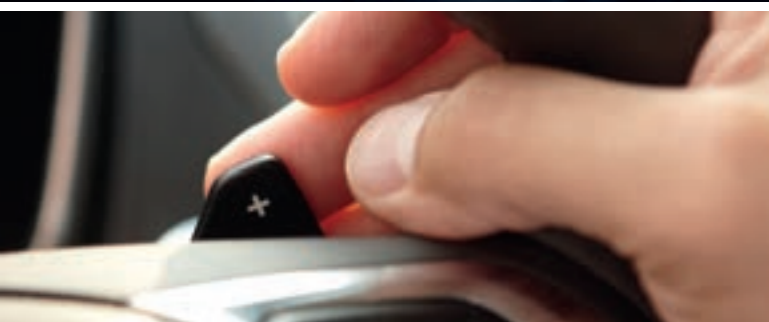
2.0L TDCi diesel

Our highly fuel-efficient 2.0L TDCi diesel engine is a gutsy performer. Its turbocharged four cylinders deliver responsive power and torque that builds low in the rev range.



2.0L EcoBoost

Why does the combination of turbocharging, direct fuel injection and twin independent variable camshaft timing (Ti-VCT) in our 2.0L i4 EcoBoost deliver more? This four cylinder petrol engine is smaller and lighter than larger displacement engines so it delivers superior fuel economy, yet there is no compromise on power.



6-Speed SelectShift Automatic™ with Paddle Shifters

The ease of an automatic and the thrill of a manual. With Paddle Shifters on the steering wheel, similar to those used by racing drivers, our SelectShift automatic transmission lets you shift through gears, smoothly and effortlessly, without having to use a clutch.

*Available on Trend and Titanium models only. Driver-assist features are supplemental and do not replace the driver's judgement.

Mondeo knows when to work hard, but is smart enough to know when to conserve power and fuel.



Auto Start-Stop*

Think how much time your engine spends idling in heavy traffic or at lights. Then think how much fuel you could save if you switched it off every time. That's what the Mondeo does automatically when you idle. Press the accelerator to go and the engine smoothly restarts, giving you a 4% to 10%# improvement in your fuel efficiency.

Mondeo Titanium Wagon shown.



EPAS

Stable, responsive steering is the hallmark of a quality drive. Electric Power Assisted Steering (EPAS) adjusts to feel lighter in slow traffic and 'heavier' at higher speeds for greater control. It also adapts to changing conditions, like cross winds, to keep you on track. But it only comes to your assistance when it's needed, saving you fuel.



*Available on diesel models only. #Based on figures obtained from controlled tests using ADR 81/02 combined cycle for vehicles with and without Auto Start-Stop

Quality Design

Mondeo doesn't just give you greater stability and control
– it spoils you. It gives you total comfort and convenience.



Mondeo Titanium hatch shown.

Panoramic roof with power sunshade*

If there was an award for best view from a car this would be it. This Panorama glass roof takes up almost half of the roof area, so everyone inside gets to see more of what's going on outside. It comes with a power sunshade for those extra sunny days.

*Available on Titanium models only. Fixed on Hatch and functional on Wagon.

Luxury. Redefined.

Powerful and refined, Mondeo's design is also clearly contemporary. From its bold grille to its sleek sweeping lines, the detail is in the design. On the inside and out. So you'll find heated front seats,[†] dual zone climate control and LED headlamps* that adjust to light and changes in the road.



Multi-adaptable LED headlamps*

Not only do these lights automatically turn themselves on and off with changes in natural light, but they also help you see around corners. A standard headlight's beam is usually fixed on one spot. These lights change the beam's level so it's always on the road, no matter what. The beam even turns corners and bends.

Dual zone climate control

Everyone's idea of comfort is different. Our dual zone climate control allows both you and your front seat passenger to choose the heating and cooling settings you prefer for your own personal space. So everyone's happy.

Safety

Mondeo has been designed to include Ford's latest safety technologies to give you greater peace of mind.



Mondeo Titanium hatch shown.



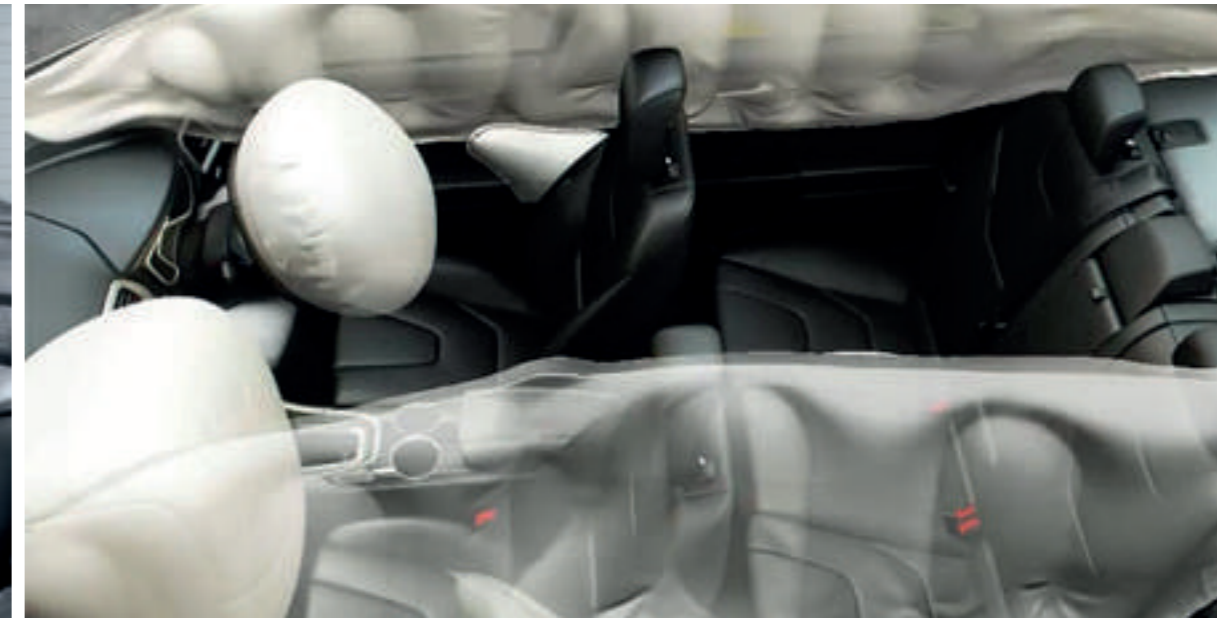
Rear inflatable seat belts

These seat belts provide extra protection for outer passengers in the back. They distribute the force of an impact across a wider area of the torso and help support the head and neck. They are also designed to hold people in the correct seating position, which can help reduce the risk of injury in a front or side impact.

Mondeo Titanium interior shown.

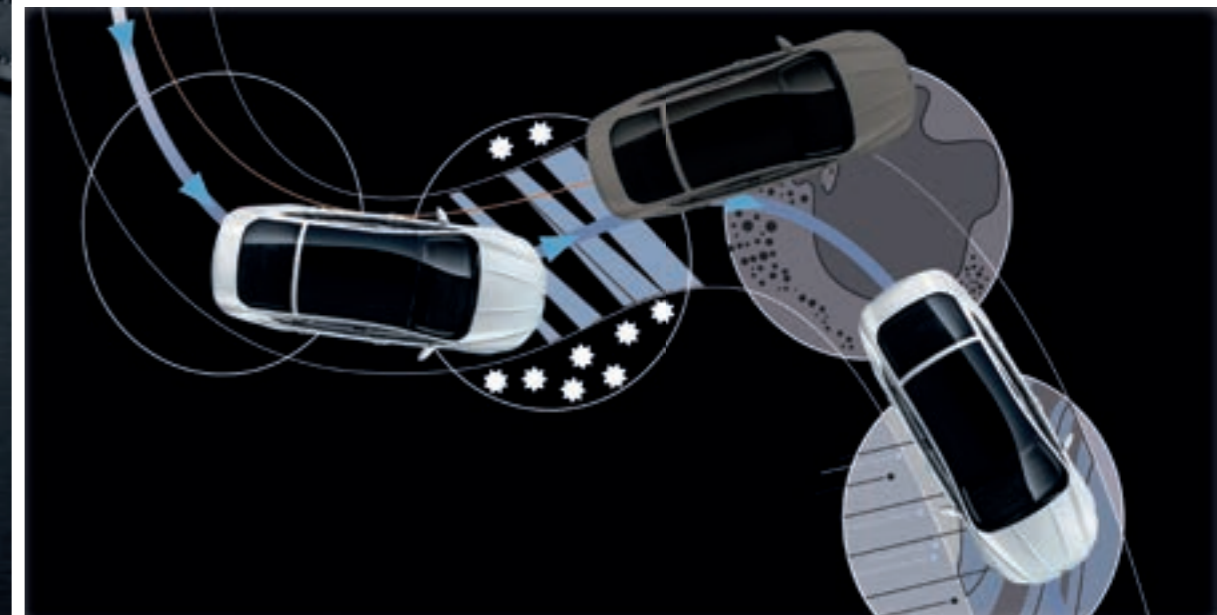
Advanced safety

The all-new Mondeo offers high levels of protection and control that are reflected in its 5-star ANCAP safety rating. Airbags, including side curtain airbags and rear inflatable seat belts, help maximise occupant protection, while Electronic Stability Control helps keep you on track, especially around corners or when you need to swerve.



Airbags all-round

Knowing you're surrounded by protection is a good feeling. With driver and passenger airbags, seat-mounted side airbags and one for the driver's knee in the front, as well as side-curtain airbags for people in the front and back, that's a lot of peace of mind.



Electronic Stability Control (ESC)

The combination of Electronic Stability Control (ESC) and Traction Control helps keep you connected to the road and in control, especially around corners and when overtaking. Together with ABS (Anti-lock Braking System) they help reduce the chances of wheel spin, wheel lock and over- or under-steering.



5-Door Hatch



Wagon



Powertrain

- 2.0L GTDi EcoBoost (low output)
- 149kW @ 5400 RPM*
- 345Nm @ 2700-3500 RPM*
- 8.2L/100 kms (8.5 for Wagons)^
- 6-Speed SelectShift® transmission

- 2.0L TDCi Diesel
- 132kW @ 3500 RPM*
- 400Nm @ 2000-2500 RPM*
- 5.1L/100 kms (5.3 for Wagons)^
- 6-Speed PowerShift® transmission

Driver Assist

- Hill Launch Assist
- Load-levelling suspension (Wagon)

Exterior

- 16" Alloy Wheels
- Projector Headlamps w/DTRL
- Front Fog Lamps
- Front Parking Sensors
- Rear Parking Sensors
- Rear LED Tail lamps
- Privacy Glass – Rearward of B-Pillar



16" x 6.5" alloy wheel

Interior (Comfort & Convenience)

- Cruise Control (w/ speed limit)
- Dual-Zone Climate Control
- Global Open/Close – Windows
- Follow-me-home-lighting
- Driver Lumbar Support
- 60:40 Rear Split Seats
- Leather Steering Wheel / Shifter
- Paddle Shifters
- Electronic Park Brake
- Cloth Seats

Infotainment

- SYNC™ 2
- 8" Colour Touch Screen
- Bluetooth & Voice Control
- Satellite Navigation
- Emergency Assistance
- DAB Digital Radio
- USB, RCA, SD Inputs

Safety

- Driver & front passenger airbags
- Thorax and curtain airbags
- Driver Knee Airbag
- Inflatable Rear Seat belts
- ABS, EBD, TCS, EBA, DSC
- All Seat Beltminder
- Power Child Locks
- Ford MyKey®

*All petrol performance figures measured using premium fuel (95 RON).
 ^Figures obtained from controlled testing using ADR 81/02 combined cycle.





Powertrain

- 2.0L GTDi EcoBoost (high output)
- 177kW @ 5300 RPM*
- 345Nm @ 2300-4900 RPM*
- 8.2L/100 kms[^]
- 6-Speed SelectShift[®] transmission

- 2.0L TDCi Diesel
- 132kW @ 3500 RPM*
- 400Nm @ 2000-2500 RPM*
- 5.1L/100 kms (5.3 for Wagons)[^]
- 6-Speed PowerShift[®] transmission

Exterior

- 17" Alloy Wheels
- Dual Exhausts
- Puddle Lamps
- Auto Fold Exterior Mirrors
- Keyless Entry with Push Button Start



17" x 7.5" alloy wheel

Interior (Comfort & Convenience)

- Adaptive Cruise Control
- Auto Dimming Rear View Mirror
- 10-Way Power Seat – Driver & Passenger
- Power Lumbar Support – Driver & Passenger
- Driver Seat Memory
- Heated Front Seats
- Auto Headlamps
- Auto High Beams
- Rain-Sensing Wipers
- Partial Leather Seats

Safety

- Rear View Camera

Driver Assist

- Active City Stop
- Pre-Collision Assist with Pedestrian Detection
- Lane Keeping Aid
- Lane Departure Warning
- Driver Impairment Monitor

^{*}All petrol performance figures measured using premium fuel (95 RON).
[^]Figures obtained from controlled testing using ADR 81/02 combined cycle.





Powertrain

- 2.0L GTDi EcoBoost (high output)
- 177kW @ 5300 RPM*
- 345Nm @ 2300-4900 RPM*
- 8.5L/100 kms[^]
- 6-Speed SelectShift[®] transmission

- 2.0L TDCi Diesel
- 132kW @ 3500 RPM*
- 400Nm @ 2000-2500 RPM*
- 5.1L/100 kms (5.3 for Wagons)[^]
- 6-Speed PowerShift[®] transmission



18" x 8.0" alloy wheel

Exterior

- 18" Alloy Wheels
- Bodykit – Front/Side Skirts
- Power Tailgate
- Adaptive Suspension
- Adaptive LED headlamps
- Dynamic Headlamp Levelling
- Signature lighting
- LED Daytime Running Lamps
- Panoramic roof – Hatch (Fixed)
- Panoramic roof – Wagon (Power)
- Driver side exterior electrochromatic mirror

Interior (Comfort & Convenience)

- Sports Seats
- Premium Leather Seats
- Heated Rear Seats
- Ambient Lighting (multi-colour)
- Scuff Plates
- Power reach/rake Steering Column
- Aluminium pedal covers

Driver Assist

- Blind Spot Information System
- Enhanced Active Park Assist

^{*}All petrol performance figures measured using premium fuel (95 RON).
[^]Figures obtained from controlled testing using ADR 81/02 combined cycle.



Complementing the Mondeo's stylish design and satisfying your personal taste is a range of attractive metallic and solid colours.



Magnetic*



Ruby Red*



Blazer Blue*



White Platinum Tri Coat*



Frozen White



Deep Impact Blue*



Moondust Silver*



Panther Black*



Ambiente

Seat insert: Cloth Ebony
Seat bolster: Cloth Ebony



16" x 6.5" alloy wheel



Trend

Seat Insert: Perforated Miko Charcoal Black
Seat Bolster: Salerno Leather Charcoal Black



17" x 7.5" alloy wheel



Titanium

Seat Insert: Salerno Leather Charcoal Black
Seat Bolster: Salerno Leather Charcoal Black



18" x 8.0" alloy wheel



Mondeo Titanium interior shown.

*Metallic Colours. Prestige paint is an option that incurs an additional charge.

Like the hem of a perfectly tailored suit, your choice of vehicle accessories are the final details that make sure your Mondeo has everything it needs to suit you and your lifestyle.



Mondeo Titanium wagon shown fitted with Carry bars and 10 double spoke 18" alloy wheels.

Models	Hatch			Wagon		
	Ambiente	Trend	Titanium	Ambiente	Trend	Titanium
Exterior styling						
10 double spoke alloy wheel 18" – Silver ¹	–	–	A	–	–	A
5 spoke alloy wheel 18" – Silver ¹	–	–	A	–	–	A
Sports Body Kit – Front Grille, fog lamp surrounds, Front, rear and side skirts	A	A	–	A	A	–
Rear Spoiler	A	A	–	–	–	–
Exterior protection						
Mudspats	A	A	–	A	A	–
Towing and carrying						
Towpack ⁴	A	A	A	A	A	A
Carry bars	A	A	A	A	A	A
Rhino Rack carry bar accessories ^{2,3}	A	A	A	A	A	A
Interior styling, comfort and storage						
Premium Carpet mats – Set of four, Mondeo logo	A	A	A	A	A	A
All weather mats – Set of four	A	A	A	A	A	A
Dog Guard 1st or second row	–	–	–	A	A	A
Cargo Barrier	–	–	–	A	A	A
Boot scuff guard	A	A	A	A	A	A
Anti slip cargo mat	A	A	A	A	A	A
Reversible cargo mat	A	A	A	A	A	A
Cargo swing net	A	A	A	A	A	A
Cargo organiser	A	A	A	A	A	A
Smoker's pack	A	A	A	A	A	A
In car electrical						
Fridge 'Day Tripper' 15L ²	A	A	A	A	A	A

Tow pack

Whether your towing requirements are for work or play, the Genuine Ford Tow Pack will make towing a breeze.



Mudspats

If your average drive is not just from A – B then these hard-wearing and durable mud spats will help protect your new Mondeo from mud, stones and debris.



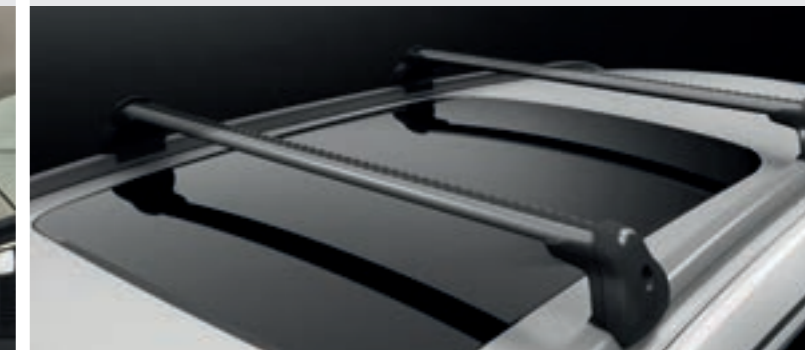
Dog Guard/Cargo Barrier

From your groceries to your best friend, this practical and strong partition will keep everything safely secured in the back while you enjoy the drive.



Carry Bars

When you need to transport a bit extra, these strong yet lightweight carry bars can be easily installed and then just as easily removed when you're not using them.



S = Standard. O = Optional. A = Accessory that can be added at any time. – = Not available.

1. Wheels and tyres sold separately when fitted in Dealership. 2. This accessory is a Supplier Branded Accessory and is not manufactured or warranted by Ford. The warranty is provided by the manufacturer of the accessory. Contact your authorised Ford Dealer for details of the accessory manufacturer's warranty applicable to this accessory. 3. Attaches to Genuine Ford carry bars (sold separately). 4. Subject to State and Territory regulations. Maximum braked load rating 1200kg 2.0L Petrol GTDi/1600 kg 2.0L Diesel.

Specifying your all-new Mondeo

36 Mechanical specifications For vehicles produced from January 2015¹

Engine type	2.0 Litre EcoBoost GTDi	2.0 Litre Duratorq 16V Turbo Diesel
Application Models (hatch)	Ambiente, Trend & Titanium	Ambiente, Trend & Titanium
Application Models (wagon)	Ambiente	Ambiente, Trend & Titanium
Max Power Output ISO (kW/rpm) ²	149kW @ 5400rpm - Ambiente, 177kW @ 5300 rpm - Trend & Titanium	132kW @ 3500rpm
Max Torque ISO (Nm/rpm) ²	345Nm @ 2700-3500rpm - Ambiente, 345Nm @ 2300-4900rpm - Trend & Titanium	400Nm @ 2000-2500
Cylinders	4 in line	4 in line
Engine	2.0L EcoBoost GTDi 4 cylinder petrol engine	2.0L Duratorq DOHC 4 cylinder 16V common rail turbo diesel engine
Engine size (cc)	1999	1997
Valve gear	DOHC with 4 valves per cylinder, twin independent variable cam timing	DOHC with 4 valves per cylinder
Injection	High pressure petrol direct injection with 7 hole injectors	Multipoint direct injection
Cylinder head	Cast Aluminium	Cast Aluminium
Compression ratio	10.0:1	16.7:1

Fuel	Hatch		Wagon	
	EcoBoost	Diesel	EcoBoost	Diesel
Consumption - Combined (L/100 km - rounded) ³	Ambiente 8.2L/100 km Trend 8.2L/100 km Titanium 8.5L/100 km	All models 5.1L/100 km	Ambiente 8.5L/100 km	Ambiente 5.3L/100 km Trend 5.3L/100 km Titanium TBC
CO ₂ Emissions (g/km) ³	Ambiente 192 g/km Trend 192 g/km Titanium 197 g/km	All models 135 g/km	Ambiente 199 g/km	Ambiente 140g/100 km Trend 140/100 km Titanium TBC
Fuel tank capacity (litres)	62	60	62	60
Capless Refueling	S	S	S	S

Suspension & Brakes

Front	Independent MacPherson strut with stabiliser bar	Independent MacPherson strut with stabiliser bar
Rear	Independent integral link with stabiliser bar	Independent integral link with stabiliser bar
Brake disc dimensions – Front	300 x 28	316 x 28
Brakes disc dimensions – Rear	302 x 11	316 x 11

Towing Capacities (kg)^{4, 5}

Maximum towing capacity (braked)	1200kg	1600kg	1200kg	1600kg
Maximum towing capacity (unbraked)	750kg	750kg	750kg	750kg

Kerb weight (kg) min kerb weight⁶

Ambiente	1610	1664	1654	1708
Trend	1634	1688	N/A	1718
Titanium	1695	1749	N/A	1789

Gross Vehicle Mass (GVM)

Ambiente	2140	2190	2190	2240
Trend	2210	2260	N/A	2310
Titanium	2230	2280	N/A	2320

Minimum Turning Circle (m)	Hatch	Wagon
Diameter kerb to kerb	11.6	11.6
Interior dimensions (mm)		
Front headroom (without/with sunroof)	987/964	988/946
Front leg room	1128	1128
Front shoulder room	1469	1469
Rear headroom (without/with sunroof)	961/960	992/946
Rear leg room	972	972
Rear shoulder room	1410	1410
Exterior dimensions (mm)		
Overall length	4871	4867
Overall width (with/without mirrors)	2121/1852	2121/1852
Overall height	1482	1501 (excluding Roof Rack)

1. Please consult your Ford Dealer to confirm vehicle production date. 2. All petrol performance figures are measured using premium fuel (95 RON). 3. Figures obtained from controlled tests using ADR 81/02. Actual fuel consumption and CO₂ emissions will depend on many factors including driving habits, prevailing conditions and your vehicle's equipment, condition and use. 4. Subject to State and Territory regulations. 5. When fitted with a Genuine Ford heavy duty towpack. Towball download and rear axle limits must not be exceeded. Please refer to your Ford Dealer for advice. 6. Kerb weight includes full tank of fuel, without occupants or luggage/cargo, added options, additional structures and towball download when towing.

Luggage capacity (L)	Hatch	Wagon
Seats upright (ISO) HATCH (Laden to Roof - with full size spare) ⁷	557	N/A
Seats upright (ISO) WAGON (Laden to Roof - with mini spare) ⁷	N/A	730
Rear seats folded (ISO) HATCH (Laden to Roof - with full size spare) ⁷	1356	N/A
Rear seats folded (ISO) WAGON (Laden to Roof - with mini spare) ⁷	N/A	1605

Specifications and options

Models	Hatch			Wagon		
	Ambiente	Trend	Titanium	Ambiente	Trend	Titanium
Engine and Transmission						
2.0L EcoBoost GTDI 4 cylinder petrol engine	S	S	S	S	-	-
SelectShift 6-speed automatic transmission	S	S	S	S	-	-
2.0L Duratorq DOHC 4 cylinder 16V common rail turbo diesel engine	O	O	O	O	S	S
PowerShift [®] 6-speed dual-clutch transmission	O	O	O	O	S	S
Ride and Handling						
Adaptive Suspension	-	-	S	-	-	S
Self levelling suspension	-	-	-	S	-	-
16" Alloy wheels and 215/60 R16 tyres ⁸	S	-	-	-	-	-
17" Alloy wheels with 235/50 R17 tyres ⁸	-	S	-	S	S	-
18" Alloy wheels machined face with 235/45 R18 tyres ⁸	-	-	S	-	-	S
16" Spare wheel with 215/60 R16 tyre ⁹	S	S	S	-	-	-
Mini spare wheel with 125/70 R17 tyre ⁹	-	-	-	S	S	S
Exterior						
Active Grille Shutters (diesel only)	S	S	S	S	S	S
Black finish roof rails	-	-	-	S	S	-
Bright finish roof rails	-	-	-	-	-	S
Body coloured, power adjustable heated mirrors	S	-	-	S	-	-
Body coloured, power adjustable heated mirrors with puddle lamps with auto fold	-	S	S	-	S	S
Body styling kit (front and rear bumpers, side skirts, fog lamps, unique lower & upper grille and rocker panel moulding)	-	-	S	-	-	S
Daytime Running Lamps	S	S	-	S	S	-
LED Daytime Running Lamps	-	-	S	-	-	S
Door handles – Body colour	S	S	-	S	S	-
Door handles – Body colour with chrome inserts	-	-	S	-	-	S
Dual exhaust	-	-	S	-	-	S
Single exhaust	S	S	-	S	S	-
'Follow me home' lighting	S	S	S	S	S	S
Front fog lamps	S	S	S	S	S	S
Halogen Projector Headlamps with manual headlamp levelling, cornering lamps with manual headlamp jet wash	S	S	-	S	S	-
Adaptive LED Headlamps with signature lighting and dynamic levelling	-	-	S	-	-	S
High mounted stop light	S	S	S	S	S	S
Rear LED tail lamps	S	S	S	S	S	S
Standard tint glass & privacy glass rearward of B-pillar	S	S	S	S	S	S
Prestige paint	O	O	O	O	O	O

S = Standard. O = Optional. P = Part of optional pack. - = Not available. A = Accessory available at any time.

⁷ Measured in accordance with ISO 3832. Figures and equipment levels by model may vary. ⁸ Set of four. ⁹ If the spare wheel, rim or tyre size differs from the other wheels fitted, the vehicle should be driven with caution and the standard wheel and tyre should be fitted as soon as possible.

Specifying your all-new Mondeo

38

Specifications and options (continued) For vehicles produced from January 2015¹⁰.

Models	Hatch			Wagon		
	Ambiente	Trend	Titanium	Ambiente	Trend	Titanium
Seating						
Heated driver & passenger seat	–	S	S	–	S	S
Variable rear heated seats	–	–	S	–	–	S
Cloth seat trim	S	–	–	S	–	–
Partial Leather Seats	–	S	–	–	S	–
Premium Leather Seats	–	–	S	–	–	S
Driver and front passenger sports seats	–	S	S	–	S	S
Driver's seat power recliner adjust (10-way) with memory	–	S	S	–	S	S
10-way power seat – Passenger	–	S	S	–	S	S
Driver side 2 way power lumbar adjust	–	S	S	–	S	S
Passenger side power lumbar adjust	–	S	S	–	S	S
4-way Manual driver seat	S	–	–	S	–	–
2-way Manual Passenger seat	S	–	–	S	–	–
4-way passive front head restraints	S	S	S	S	S	S
2-way rear head restraints	S	S	S	S	S	S
Driver seat back map pockets	S	S	S	S	S	S
Passenger seat back map pocket	S	S	S	S	S	S
Rear seat centre armrest with covered stowage & cup holders	–	S	S	–	S	S
60/40 split rear bench seat and seat back	S	S	S	S	S	S
Instrumentation and Controls						
Adaptive Cruise Control	–	S	S	–	S	S
Pre-Collision Assist with Pedestrian Detection	–	S	S	–	S	S
Forward Collision Warning	–	S	S	–	S	S
Cruise Control with steering wheel mounted controls	S	–	–	S	–	–
Automatic headlamps ON/OFF feature	–	S	S	–	S	S
Automatic highbeam ON/OFF feature	–	S	S	–	S	S
Instrument cluster: speedometer, tachometer, odometer, tripmeter, fuel gauge and water temperature gauge, digital clock	S	S	S	S	S	S
Leather wrapped steering wheel	S	S	S	S	S	S
Leather wrapped gear knob / shifter	S	S	S	S	S	S
Manual headlight levelling	S	S	–	S	S	–
Smart Key with push button start	–	S	S	–	S	S
Manual Telescopic and tilt adjustable column	S	S	–	S	S	–
Power Telescopic and tilt adjustable column	–	–	S	–	–	S
Trip computer: Includes average fuel consumption, average speed, outside air temperature, trip reset, distance to empty	S	S	S	S	S	S
Warnings: low fuel, oil pressure, driver/front passenger seat belts, glow plug indicator (diesel only), ignition/alternator, brake system/handbrake on, airbags, frost warning, message indicator, audible warning 'lights on', key in ignition and door ajar	S	S	S	S	S	S
Comfort and Convenience						
Dual zone climate control	S	S	S	S	S	S
Ambient lighting (multi-colour)	–	–	S	–	–	S
Automatic rain sensing front windscreen wipers with variable sensitivity adjustment	–	S	S	–	S	S
Brushed stainless scuff plates (front doors)	–	–	S	–	–	S
Carpet mats (front)	S	S	S	S	S	S
Centre console with storage box with two front cupholders	S	S	S	S	S	S
Courtesy light (delay and theatre dimming)	S	S	S	S	S	S
Day/night manual mirror	S	–	–	S	–	–
Driver and front passenger sun visors with illuminated vanity mirror	S	S	S	S	S	S
Driver's footrest	S	S	S	S	S	S
Electrochromatic rear vision mirror (auto-dimming)	–	S	S	–	S	S
Front map lights	S	S	S	S	S	S
Illuminated entry system	S	S	S	S	S	S

S = Standard. O = Optional. P = Part of optional pack. – = Not available. A = Accessory available at any time.

Models	Hatch			Wagon		
	Ambiente	Trend	Titanium	Ambiente	Trend	Titanium
Comfort and Convenience (continued)						
Luggage compartment 12V power point	S	S	S	S	S	S
Luggage compartment illumination	S	S	S	S	S	S
Luggage Management System	–	–	–	S	S	S
Panoramic Roof (Fixed Glass)	–	–	S	–	–	–
Panoramic Roof (Power openable)	–	–	–	–	–	S
Power front windows with driver & passenger one-touch up & down with global open / close	S	S	S	S	S	S
Power rear windows with global open / close	S	S	S	S	S	S
Power tailgate	–	–	S	–	–	S
Rear floor vents	S	S	S	S	S	S
Rear windscreen wiper with fixed intermittent and auto wipe features	S	S	S	S	S	S
Roof mounted sunglasses stowage	S	S	S	S	S	S
Second row accessory socket - 12V power point	S	S	S	S	S	S
Second row accessory socket - 220V	–	–	S	–	–	S
Second row courtesy light	S	S	S	S	S	S
Second row map/reading lights	–	–	S	–	–	S
2 remote control flip keys	S	–	–	S	–	–
2 passive keys	–	S	S	–	S	S
Audio						
Single CD with AM/FM DAB tuner radio with 8 speakers	S	S	–	S	S	–
Premium Single CD with AM/FM DAB tuner radio with 9 speakers	–	–	S	–	–	S
Ford SYNC™ 2 connectivity system with voice-activated hands free calling, automatic phone book transfer, text messaging support (compatible phones only), digital music player support, climate control	S	S	S	S	S	S
8" colour touch screen	S	S	S	S	S	S
Satellite navigation system with Traffic Message Channel ¹¹	S	S	S	S	S	S
USB Integration (2 ports)	S	S	S	S	S	S
Bluetooth® mobile phone integration ¹²	S	S	S	S	S	S
iPod Integration ¹³	S	S	S	S	S	S
Safety, Security & Driver Assistance						
Active City Stop	–	S	S	–	S	S
All Seat Beltminder	S	S	S	S	S	S
Anti-Lock Braking System (ABS) with Electronic Stability Control ¹⁴	S	S	S	S	S	S
Blind Spot Information System	–	–	S	–	–	S
Door locks - Child-proof rear door locks (power)	S	S	S	S	S	S
Driver and front passenger airbags	S	S	S	S	S	S
Driver and front passenger side front airbags ¹⁵	S	S	S	S	S	S
Distributed Engine Immobiliser	S	S	S	S	S	S
Enhanced Active Park Assist	–	–	S	–	–	S
Height adjustable seatbelt mounts (front only)	S	S	S	S	S	S
Hill Launch Assist	S	S	S	S	S	S
Inflatable driver's knee bolster airbag	S	S	S	S	S	S
Lane Keeping Aid with Lane Departure Warning	–	S	S	–	S	S
Driver Impairment Monitor	–	S	S	–	S	S
MyKey	S	S	S	S	S	S
Front active seat belt retractor pretensioner	S	S	S	S	S	S
Rear inflatable seat belts (outer 2 only)	S	S	S	S	S	S
Rear Parking Sensors	S	S	S	S	S	S
Rear View Camera	–	S	S	–	S	S
Remote central double locking	S	S	S	S	S	S
Side curtain airbags	S	S	S	S	S	S
Trailer Sway Control	S	S	S	S	S	S
Volume & intrusion sensing & Perimeter alarm	S	S	S	S	S	S

S = Standard. O = Optional. P = Part of optional pack. – = Not available. A = Accessory available at any time.

¹⁰. Please consult your Ford Dealer to confirm vehicle production date. ¹¹. Traffic information is provided through an arrangement with Intellematics Australia Pty Ltd. Traffic information is based on data provided with the permission of one or more third parties. Should Ford's arrangement with Intellematics Australia Pty Ltd cease for any reason, the ongoing provision of traffic information cannot be guaranteed. ¹². The Bluetooth® word mark and logos are registered trademarks owned by Bluetooth SIG, Inc. and used under licence by Ford Motor Company. Please visit www.ford.com.au/compatibility for compatible devices. ¹³. iPod is a trademark of Apple Inc. For compatibility, see iPod Integration page. Please visit www.ford.com.au/compatibility for compatible devices. ¹⁴. Electronic Stability Control is also known as Dynamic Stability Control. ¹⁵. Front seat side airbags protect front seat occupants only.



Quality

We design and build your Ford to feel as good after many years of service as it did the day you picked it up. And to drive just as beautifully, too.



Sustainability

Using advanced technology, we're committed to creating vehicles with improved fuel economy, reduced CO₂ emissions and a lower overall cost of ownership.



Safety

Ford's Intelligent Protection System uses sophisticated technology designed to help prevent an accident and, if one should happen, to help protect you.



Smart

Vehicles with smart, intuitive technologies designed to connect you to your world and many clever solutions that make life a little easier.

Speak to your Ford Dealer today about how we can help you make the most out of your vehicle ownership experience.

Complimentary State Auto Club Roadside Assistance and Membership.

Our commitment to your complete satisfaction plays a major role in everything we do. That is why we provide a 12 month Roadside Assistance package including State Auto Club Membership for all Retail and Blue Fleet Customers (with fleets less than 5 vehicles).

This package gives you access to the largest network of roadside assistance providers in the country, so you can be assured that you have non-stop coverage every day of the year.

The benefits of being a member are not limited to the peace of mind of 24/7 roadside assistance. You also have access to a wide range of member benefits including Show Your Card & Save. In addition, you will maintain any benefits accrued through your existing years of membership (where applicable).

Complimentary State Auto Club Roadside Assistance & Membership is valid for eligible Ford vehicles and is available from participating Authorised Ford Dealers only. Visit your local Ford Dealer or refer to ford.com.au for more information and full terms and conditions.



Warranties & Service.

3 year/100,000km new car warranty.#

For three years or 100,000km, whichever comes first, your Ford is covered against any defects in factory materials or workmanship. This also applies to Genuine Ford Accessories you may have had fitted before you took delivery.

5 year warranty against perforation corrosion.#

It's reassuring to know that the original body of your gleaming new Ford is guaranteed against perforation corrosion for the first five years of its life. If perforation corrosion occurs, we'll fix it for free.

myFord Warranties and Insurance.

When you first turn the key of your brand new Ford you want to do so without a care in the world. Our range of myFord products gives you that extra peace of mind. For more information about myFord Warranties and Insurance, visit your participating Ford Dealer for further details on the plans that best suit your needs. Terms, conditions and eligibility criteria apply.

12 months/15,000km service intervals.

Under normal driving conditions service intervals are 12 months or 15,000km, whichever occurs first.

Ford Capped Price Servicing.

You'll now always know exactly what you're going to pay for an eligible scheduled service before you even come in. So there are no nasty surprises for the life of your car. With Ford Capped Price Servicing, we'll publish the maximum price you'll pay for an A or B logbook service at participating Authorised Ford Dealers for all vehicles built from 2007. You'll have that certainty for as long as you own the car.

For more details visit your participating local Ford Dealer or visit ford.com.au/myfordcps for full terms and conditions.

Plus, our service doesn't end at the service garage. Because, with each Capped Price Service for up to 7 years, Retail and Small Business Customers (fleets of less than 5 vehicles) will also receive up to 12 months Auto Club Membership, including free Roadside Assistance. A free loan car will also be available for eligible customers with Capped Price Servicing at participating dealers.

Want to contact us?

For answers to your questions, or help with any concern, contact our Customer Relationship Centre on 13 FORD (13 3673) or email customers@fordcrc.com.au

Visit us on the web.

If you want more information on Ford or our entire product range, visit us at ford.com.au

Running a fleet?

Our Ford Fleet team is available to assist fleet customers with information on Ford products and services. Call 1300 13 13 30 or email askfleet@ford.com

#Conditions and exclusions apply. For more information visit www.ford.com.au/newvehiclewarranties

This brochure details specifications and features of the MD Mondeo. Some driver assistance features and safety features described in this brochure are designed to function using sensors, whose performance may be affected under certain weather or environmental conditions. Not all features will be available on the entire MD Mondeo model range. Please visit our website www.ford.com.au for more information.

This brochure is designed to provide you with a general introduction to the Ford Products (including available optional equipment) referred to, and should be read in conjunction with the latest specification sheet. Because of changes in conditions and circumstances Ford* reserves the right, subject to all applicable laws, at any time, at its discretion, and without notice, to discontinue or change the features, designs, materials, colours and other specifications and the prices of its products, and to either permanently or temporarily withdraw any such products from the market without incurring any liability to any prospective purchaser or purchasers. The latest specification sheet should be referred to for information on the availability, ordering and use of features and optional equipment. Always consult an authorised Ford Dealer for the latest information with respect to features, specifications, prices, optional equipment and availability before deciding to place an order.

*FORD MOTOR COMPANY OF AUSTRALIA LIMITED. (A.B.N. 30 004 116 223) Registered Office: 1735 Sydney Road, Campbellfield, Victoria 3061, Australia. Printed March, 2015. BHFMC0219 MD Mondeo Brochure. FRD001859



Go Further

ford.com.au