

 **Territory**



At Ford, with such a long and successful motoring heritage behind us, we understand that everyone's lifestyle is different. What you look for in a vehicle will be different from the next person. It could be a vehicle that allows you to fit in all the family and hit the open road for the weekend, a zippy urban car that's perfect for tackling city traffic, or maybe you need a vehicle that allows you to play as hard as you work. We'd like to think that our family of vehicles is proof that Ford never stops looking forward, designing and engineering vehicles that catch your eye, are technologically advanced, consider the environment and help keep you safe. In short, no matter what your lifestyle, you're sure to find a Ford that can help you live more of your life.



Irresistible Design:

Because everyone's idea of the perfect car is different, Ford have designed and engineered a family of exciting, athletic and sleek vehicles that look great inside and out.



Great to sit in, great to drive:

There's nothing quite like driving a Ford. That's because every Ford is built from the ground up to be exhilarating to drive, with high levels of interior comfort along with the very latest safety systems that help keep you in control and protect you and your passengers.



Sustainability:

Ford recognises that climate change is a significant global challenge. We have an ongoing commitment to caring for the environment in every facet of our business, including delivering alternative fuel solutions such as diesel and LPG.



Innovation and Technology:

Thinking smarter means a comfortable, safe and enjoyable drive every time you turn the key. Our innovative solutions to everyday tasks using the latest technology save you time and connect you to the digital world.



Built to Last:

Every Ford is built not just for today but for tomorrow as well. So, when you buy a Ford you enjoy the type of quality that you can rely on, day in day out. Not just the look and feel, but the way it performs and the way it lasts.



The award-winning Ford Territory allows you to experience the freedom of a 4x4, the driving dynamics and superior handling of a sedan and the practicality of a people mover. All in the one car. Designed, engineered and built in Australia, Territory is a vehicle that reflects the way we live today. Test drive the Territory and you'll discover the possibilities are truly amazing.



Territory





Territory Ghia AWD shown in Silhouette with optional dealer fit Genuine Ford carry bars.



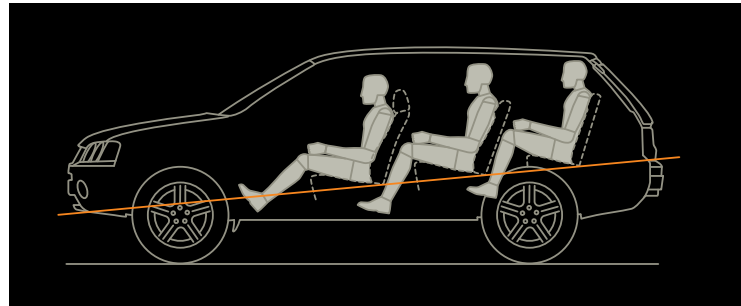
Territory Ghia AWD shown in Lightning Strike with optional Dealer fit 2300kg rated heavy duty towpack.

INTERIOR

An interior that adapts to your lifestyle.

The Territory's functionality and innovation delivers an intelligent cabin layout that can change with your needs.

Regardless of whether you're picking up the kids from soccer or you're packed up for the big family 4WD adventure, you'll quickly discover that Territory's clever interior design has the versatility of a Swiss Army Knife. For starters, there's enough room for everyone thanks to Territory's optional 3rd row seating which allows you to seat up to 7 adults comfortably. Plus, the 2nd and 3rd rows fold completely flat providing you with a huge storage area. Stowage is catered for with 30 storage areas, and we're not talking little nooks and crannies masquerading as legitimate storing places, but useful innovations such as a lockable compartment under the driver's seat to help protect valuables. There's also a wet/dry compartment* in the rear that can protect other luggage from muddy sporting gear or a damp wetsuit. And there are drink holders for everyone. The interior from behind the wheel is equally impressive, with the driver's command position giving you the elevated driving position of a 4WD, providing a clearer picture of what's happening on the road ahead. Systems such as satellite navigation[#], audio and dual zone climate control[†] are within easy reach thanks to the Interior Command Centre.



Theatre seating.

Simple ideas such as Territory's theatre seating means each row of seats, including the optional third row, is raised offering greater comfort and visibility for all.

*Wet/dry compartment not available with optional third row seat. #Satellite navigation is optional on TS, Ghia and Ghia Turbo models. Not available on TX or Turbo. †Not available on TX or Turbo.



Territory Ghia AWD shown with optional third row seat and Hill Descent Control.



With the optional third row seats folded down, there's still more than enough storage space for a family on holiday.



60/40 Split fold second row seating gives you the flexibility to accommodate passengers and cargo.



Second and optional third row seats fold flat to create a huge cargo area.

Amazing control in any Territory.

No matter where your adventures take you, Territory is designed to deliver a smooth ride on all surfaces.

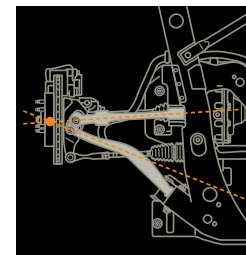
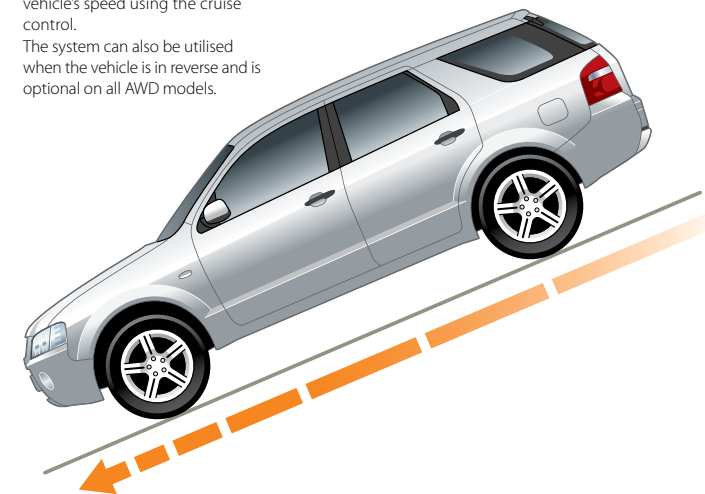
Whether you're conquering a snow covered road or navigating the concrete jungle, the sedan-like feel and precise handling in all conditions gives you the freedom to take on any territory you choose. You have the choice of Rear-Wheel-Drive with its outstanding performance on the black top, or All-Wheel-Drive so you can take it off the beaten track. The intuitive technology of the Acutracs and Acutracs Plus systems reacts to the environment giving you greater control in any situation. The full-time AWD system continuously delivers torque to all four wheels for all road confidence, greater traction in slippery conditions and precise cornering. There is also Grade Control Logic to assist with braking and speed control when you're descending steep roads. Add to this, Dynamic Stability Control, ABS with Electronic Brakeforce Distribution and Traction Control to minimise wheel slip. Needless to say, this makes for a noticeably safer drive.



Territory Ghia AWD shown in Silhouette with optional Hill Descent Control and no cost optional SUV biased tyres.

Hill Descent Control.

This feature regulates your downhill speed in steep 'off-road' conditions. Operated by a dash-mounted control, the system automatically applies the brakes and limits the vehicle's speed using the cruise control. The system can also be utilised when the vehicle is in reverse and is optional on all AWD models.

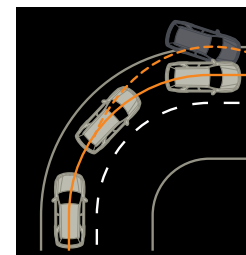


Virtual Pivot Control Link.

The feeling of precise control and agility you'll experience in the Territory comes from the technically advanced Virtual Pivot Control Link front suspension. It provides Territory with a no compromise suspension offering great steering and control combined with excellent comfort. This system is based on the best Europe has to offer and in order to tailor the suspension to Australian conditions, the system has undergone over one million kilometres of testing on a diverse array of roads from bitumen to gravel.

Dynamic Stability Control*

Dynamic Stability Control (DSC) strengthens your connection to the road and helps you avoid the problem of oversteer and understeer. DSC tracks the vehicle's movements and then works in tandem with Traction Control and ABS to help keep the vehicle under control.



Ride and handling			
	Territory RWD	Territory AWD	Territory Turbo
	Acutrac	Acutrac Plus	Acutrac Plus
Virtual Pivot Control Link (front suspension)	S	S	S
Control Blade IRS (rear suspension)	S	S	S
ABS with Electronic Brakeforce Distribution (EBD)	S	S	S
Grade Control Logic (GCL)	S	S	S
Traction Control (TC)	S	S	S
Dynamic Stability Control (DSC)*	S	S	S
Hill Descent Control (HDC)	-	O	O

*Dynamic Stability Control (DSC) is also known as Electronic Stability Control (ESC).

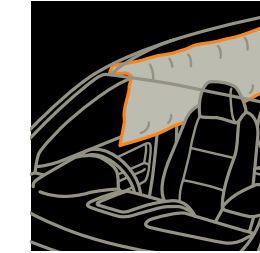
Travel in safer Territory.

You can take comfort in the knowledge the Territory boasts a long list of innovative safety features.

Both driver and passengers are cocooned by a legion of safety features. At the forefront is the computer controlled Intelligent Safety System which, in an emergency, co-ordinates a response to enhance your protection. The system employs sensors which monitor the driver's seating position, seat belt status and crash severity. Should an accident occur, information is fed to the Advanced Restraints Module which instantly deploys safety technologies accordingly. Dual stage front airbags and side curtain airbags* activate as needed, front seat belt pretensioners reduce any slack and energy management seat belt retractors limit the amount of force on the occupant. You are further protected by front crumple zones, a reinforced passenger safety cell, ABS and a collapsible steering column. Territory is also available with reverse camera† and reverse sensing system‡ to make reversing and parking easier.



Territory Ghia AWD shown in Lightning Strike.



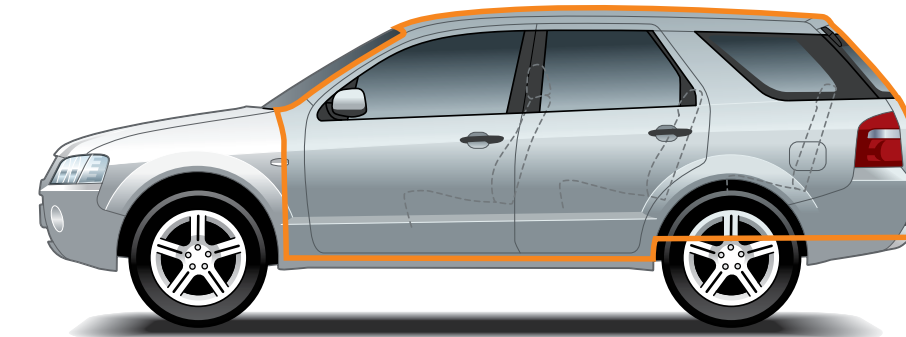
Inflatable side curtain airbags*:

Mounted behind the headliner above the front and rear doors and designed to enhance your protection in the event of a crash.



Anti-intrusion brake pedal:

Decouples in a collision to help prevent leg injuries. Pedals are also power adjustable.



Passenger safety cell.

Incorporating high strength steel for greater all round strength and protection, the safety cell greatly reduces intrusion into the passenger space, minimising the likelihood of occupant injuries.



Reverse Camera.†

Like giving you eyes in the back of your head, the reverse camera activates automatically when the car is engaged in reverse gear. With a fisheye lens capable of providing a 130° wide angle view up to 15 metres behind the car, you'll be amazed at the enhanced visibility.

*Standard on TS, Ghia and Ghia Turbo. Optional on TX and Turbo. †Standard on Ghia and Ghia Turbo. Optional on TS. ‡Standard on TS, Ghia and Ghia Turbo. Available as an accessory on TX and Turbo. †Standard on Ghia and Ghia Turbo. Optional on TX, TS and Turbo models.

ENGINE

Amazing power and performance.

Powered by technology, Territory reserves its most persuasive charms for the driver.

The elegant yet athletic stance of the Territory signals a vehicle that will deliver impressive performance, and that promise is well and truly kept. But what's surprising is that once you're behind the wheel, the precise handling makes for a driving experience you're more likely to associate with a sedan, not a vehicle for up to seven people. Territory doesn't shy away when it comes to towing, allowing you to pull loads up to 2300kg.* So whether you're hooking up the boat for a fishing weekend or it's the caravan for school holidays, you'll find towing a breeze. What's more, the six speed Sequential Sports Shift automatic transmission on AWD models gives you the choice to sit back and enjoy, or to get involved in the driving experience.



Territory Ghia Turbo.



Amazing engines.

Leading the way is the turbo charged 4.0 litre DOHC DIVCT 6-cylinder engine that delivers an amazing 245kW of power and 480Nm of torque, while the standard 6-cylinder engine produces 190kW of power and an impressive 383Nm of torque yet still delivers remarkable fuel efficiency.



Amazing transmissions.

The German engineered ZF six speed automatic transmission with Sequential Sports Shift refines Territory's sedan-like feel to an amazing level. Standard across the AWD range, this world class transmission enables smoother, slicker acceleration with the luxury of seamless gear changes. Calibrated specifically for Australian conditions, the six speed adapts to your driving style by considering acceleration rates, braking application and cornering speed, and then matches performance to suit.

*Subject to State and Territory regulations. Based on standard 5 seater models with 5 occupants (@68kg) and no luggage, using a Genuine Ford heavy duty towpack with load levelling kit. For RWD models, an auxiliary transmission cooler must be fitted. For greater passenger and luggage requirements, please consult your authorised Ford Dealer.

When you first set eyes on the amazing Territory Turbo it's hard not to get a tingle of excitement. The sporty diamond mesh grille, 18" sports alloy wheels and the imposing bonnet scoop do more than simply catch your eye, they hint at the thrill that awaits you. The unique blend of spirited sports performance and refined luxury, coupled with Territory's award-winning design and innovation mean the possibilities are even more amazing.



Territory Turbo





Territory Ghia Turbo shown in Ego and Territory Turbo shown in Seduce with optional side steps and mudspats.

TURBO ENGINE

Truly awesome power.

Territory Turbo's athletic road presence is perfectly in step with some formidable power.

Turn the key and you'll instantly sense the immense power from under the bonnet. There lies a turbo charged 4.0 litre DOHC DIVCT 6 cylinder engine that delivers an amazing 245kW of power and 480Nm of torque. Enhanced front brakes with twin piston front brake callipers and larger diameter provide greater control and more effective braking. And the world class, German engineered ZF six speed automatic transmission taps into that power effortlessly for an adrenalin-charged driving experience.



TURBO INTERIOR

**Luxurious interior,
endless possibilities.**

**The Territory Turbo's interior is an
environment where luxury and
sports performance sit side by side.**

With a leather sports steering wheel and gearshift, body-hugging sports seats and a stylish instrument cluster that gives the cockpit a true performance feel, slip behind the wheel of the amazing Territory Turbo and you could easily think you were in a European sports car. That's until you look around and realise there's room to seat up to seven adults in complete comfort. The Territory Ghia Turbo features a stunning Black Onyx centre console finish and luxurious Warm Charcoal leather seat trim with silver stitching. The Territory Turbo model comes with an exclusive metallic-effect fabric seat trim with suede-feel seat bolsters.



Territory Ghia Turbo shown fitted with optional Hill Descent Control.

RANGE

An amazing choice.

From breathtaking power to luxury and optional extra seating capacity, the Territory range offers you amazing possibilities.

Everybody's needs are different. While some want the kind of power and excitement that only a Territory Turbo delivers, there are those who like to tackle the high road in the height of luxury, like the Territory Ghia. And there are those whose needs mean they prefer Rear-Wheel-Drive to All-Wheel-Drive. Of course, with such a wide choice of models and options, you'll find that not only are the possibilities amazing, there's a Territory to suit you down to the ground.



Territory (Available in RWD or AWD)



Territory TX

- Dynamic Stability Control
- 100 Watt single-CD audio system with steering wheel controls
- 4-Way driver power seat
- 30 storage compartments
- Power windows



Territory TS

- 17" alloy wheels*
- Dual zone climate control
- Premium 6-disc audio system with sub-woofer
- Side curtain airbags
- Cruise control and reverse sensing system



Territory Ghia

- Body colour bumpers with front fog lamps
- Eucalyptus leather seat trim
- 6-Way driver power seat with memory
- Reverse camera
- Electrochromatic rear vision mirror (auto-dimming)

*Set of four.

Territory Turbo (AWD)



Territory Turbo

- 245kW turbocharged engine with 6-speed auto transmission
- 18" alloy wheels*
- Sports seats and leather sports steering wheel
- Bonnet scoop and fog lamps
- Cruise control



Territory Ghia Turbo

- Warm Charcoal leather seat trim
- Premium 6-disc audio system with sub-woofer
- Reverse camera and reverse sensing system
- Side curtain airbags
- 6-Way driver power seat with memory



Exterior colours.



Winter White



Lightning Strike*



Kashmir*



Steel*



Silk**



Ego*



Seduce*



Silhouette*



Sensation*



Velvet*

MODEL	TX	TS	Ghia	Turbo	Ghia Turbo
EXTERIOR COLOUR					
Winter White	A	A	A	A	A
Lightning Strike*	A	A	A	A	A
Silk**	A	A	A	A	A
Kashmir*	A	A	A	A	A
Ego*	A	A	A	A	A
Steel*	A	A	A	A	A
Seduce*	-	A*	A	A	A
Silhouette*	A	A	A	A	A
Sensation*	-	-	A	A	A
Velvet*	-	A*	A	A	A
BUMPER COLOUR					
Accent	S	S	NCO	-	-
Body colour	O	O	S	S	S

A - Available. **S** - Standard. **O** - Option that must be ordered before the vehicle is manufactured.
NCO - No cost option. - - Not available.

*Prestige colours are an optional extra that incur an additional charge on TX, TS and Turbo. **Silk ends January, 2009.
 **Full body colour bumpers and door cladding must be specified.

Interior trims.

Territory TX



Trek

Dakota

Territory TS. No cost option for Territory Ghia.



Launceston

Miller

Territory Ghia



Eucalyptus leather

Eucalyptus leather

Sports leather trim pack.

Personalise your new Ford Territory with the unique sports leather trim pack featuring Warm Charcoal partial leather seat trim, leather wrapped steering wheel, shifter and handbrake cover with colour matched centre console lid and door trims.

*Includes mandatory cruise control on TX models.



Sports leather trim pack shown fitted to Territory TX RWD.



Territory Turbo shown fitted with optional Hill Descent Control.

Territory Turbo



Momentum metallic-effect fabric

Warm Charcoal suede-feel trim

Territory Ghia Turbo



Warm Charcoal leather trim

Warm Charcoal leather trim with silver stitching

ACCESSORIES

Give your Ford Territory its own unique personality.

When it comes to personalising your Territory, the possibilities are now even more amazing.

It goes without saying that the Ford Territory gives you the freedom to go just about anywhere and do almost anything. It's a vehicle that opens up so many choices. And one of those choices is how you'll personalise the exterior of your new Territory to specifically suit your lifestyle. For starters, there's a range of practical accessories that allow you to carry bikes, kayaks or skis. Then there are accessories to enhance the look of your Territory such as alloy sports wheels, as well as safety in the form of accessories like the Intelligent Bar System. By taking into consideration what you want from your Territory, we've created a huge selection of accessories that are designed to be part of the vehicle. Amazingly, there more than 50 products to choose from.



Territory TX AWD shown in Lightning Strike with optional body colour bumpers, side steps, body styling kit, spoiler and Genuine Ford 17" 7 spoke alloy wheels, with no cost optional SUV biased tyres.



Canoe/kayak holder.*
Ideal for carrying a canoe or kayak and can be adjusted to accommodate different size water craft.



Carry bars.
These lockable carry bars suit a range of roof storage accessories to make carrying extra cargo a breeze.



Roof luggage box 375L.*
Have the flexibility to store camping or sports gear on the roof. Lockable and can be opened from either side.



Ski/snowboard carrier.*
Lockable with soft rubber padding to help prevent damage to skis. Accommodates up to 5 sets of skis.



Bike carrier.*
Transport your bike securely with this lockable bike carrier.



Side steps.
Ideal for using as a step when loading items onto the optional carry bars.



Reverse sensing system.
Automatically activates and provides a warning tone to help you reverse with greater accuracy. Standard on Territory TS, Ghia and Ghia Turbo.



Intelligent Bar System.
Fully integrated with the vehicle's Intelligent Safety System and dual stage front airbag system. Available in black or grey.



Bonnet protector.
Made from durable acrylic to help deflect stones and other objects. Also available in a clear finish without Territory logo.



Window shades.
Stylish side and rear window shades. Reduce glare and help protect passengers from harmful rays.



Dust deflector.
Helps reduce dust build up on tailgate glass. Ideal for country driving.



17" 7 spoke sports alloy wheel.
Set of four. Exclusively designed by the Ford Australia Design Studio to enhance the look of your Territory.

*Genuine Ford carry bars shown are sold separately.

ACCESSORIES

Adapt your Ford Territory for life's endless possibilities.

A range of useful, convenient and well designed accessories that help you get even more enjoyment from your Ford Territory.

You'll find the Ford Vehicle Personalisation accessory range displays the same level of innovation and clever thinking that we put into the vehicle itself. As you might expect, the range is broad because this is a vehicle that lets you do so much. Whether you're looking to entertain the family with the Futuris rear headrest DVD system, enhance the look of your Territory with the sports leather trim pack or add accessories to meet the needs of your active lifestyle, such as waterproof seat covers and a cargo organiser, there are so many solutions for life's endless possibilities.



Waterproof seat covers.

Easy to remove neoprene covers help to protect your seat fabric from dirt, sand and everyday wear and tear. Driver, front passenger and 2nd row seat covers all sold separately.

Sports leather trim pack*: Featuring Warm Charcoal partial leather seat trim, leather wrapped steering wheel, shifter and handbrake cover with colour matched centre console lid and door trims.



Bluetooth mobile phone kit.†

Fully integrated into the vehicle's audio system, the Bluetooth mobile phone kit allows you to answer a phone call at the touch of a button.



iPod/MP3 audio input.‡

Play your favourite music by connecting your MP3 player or iPod through your Territory's audio system.



Cargo organiser.⁴

Innovative and clever, the cargo organiser perfectly stores groceries, school bags and sports gear.



Child activity organiser.⁵

Stores items neatly and includes a tray. Perfect for keeping the kids' stuff together and converts into a backpack.



Cargo liner.⁶

Easy to remove durable rubber mat helps protect rear cargo area and minimise movement of goods during transit.



Fridge 'Day Tripper' 15L.⁷

Connects to 12V power outlet in the vehicle to help keep food and drinks warm or cool for day trips or picnic lunches.



Cargo swing net.⁸

Convenient storage solution that minimises the risk of items moving during transit. Easy to install and remove.



Alloy scuff plate inserts.⁹

Set of four polished aluminium scuff plate inserts take refinement to another level. Also available in a sporty acrylic finish.

†Includes mandatory cruise control on TX models. †Only suitable for Bluetooth compatible mobile phones. The Bluetooth trademark is owned by Bluetooth SIG, Inc. and used by Ford Motor Company under license. ‡iPod or MP3 device not included. iPod is a trademark of Apple Inc. ⁴Can be used with optional 3rd row seat when folded flat. Rear trinet tray lids shown are no longer available. ⁵When vehicle is in motion, fridge must be fitted with Genuine Ford restraint strap supplied.



Territory Ghia AWD shown in Lightning Strike with optional third row seat. Genuine Ford carry bars, canoe/kayak holder and side steps.

OPTIONS AND ACCESSORIES AVAILABILITY BY MODEL

ACCESSORIES - EXTERIOR STYLING	TX	TS	Ghia	Turbo	Ghia Turbo
Body styling kit	A	A	A	A	A
Spoiler	A	A	A	A	A
Side steps	A/O	A/O	A/O	A	A
17" 7 spoke sports alloy wheels ³	A/O	A/O	A/O	-	-
Mullins - Haze 17" alloy wheels ^{1,2,3}	A	A	A	-	-
Mullins - Haze 18" alloy wheels ^{1,2,3}	-	-	-	A	A
Mullins - Haze Chrome 18" alloy wheels ^{1,2,3}	-	-	-	A	A
Mullins - Raker Chrome 18" alloy wheels ^{1,2,3}	-	-	-	A	A
Mullins - Stealth Chrome 18" alloy wheels ^{1,2,3}	-	-	-	A	A
Mullins - Subb Chrome 18" alloy wheels ^{1,2,3}	-	-	-	A	A
Mullins - Tease Chrome 18" alloy wheels ^{1,2,3}	-	-	-	A	A
ACCESSORIES - EXTERIOR PROTECTION					
Bonnet protector	A	A	A	A	A
Dust deflector	A	A	A	A	A
Fog lamp kit	A	A	S	S	S
Fog lamp/headlamp guards	A	A	A	A	A
Intelligent Bar Systems	A	A	A	A	A
Licence plate covers	A	A	A	A	A
Lights on feature	A	A	A	A	A
Mudspats	A	A	A	A	A
Sump guard	A	A	A	-	-
Weathershields ⁴	A	A	A	A	A
ACCESSORIES - INTERIOR STYLING					
Sports leather trim pack	O ^{5,6}	O ⁵	O	-	-
Leather sports steering wheel	A ⁶	A	A	-	-
Leather Sequential Sports shifter ²	A ⁶	A	A	-	-
Leather sports steering wheel and shifter pack	O ⁶	O	O	-	-
Scuff plate inserts–alloy/sport	A	A	A	A	A
ACCESSORIES - INTERIOR COMFORTS AND STORAGE					
Cargo liner/cargo retention net/cargo swing net/cargo hammock net	A	A	A	A	A
Carpet mats–front and rear	A	A	A	A	A
Dashmat	A	A	A	-	-
Load area cargo cover	A	A	A	A	A ⁸
Rubber floor mats–front and rear	A	A	A	A	A
Smoker's pack	A	A	A	A	A
Waterproof seat covers–front and rear ⁹	A	A	A	A	A
Window shades	A	A	A	A	A

ACCESSORIES - SAFETY AND SECURITY	TX	TS	Ghia	Turbo	Ghia Turbo
Alarm	A	A	A	A	A
Fire extinguisher 1kg	A	A	A	A	A
First aid kit	A	A	A	A	A
Reverse sensing system	A	S	S	A	S
Cargo barrier ¹⁰	A	A	A	A	A
Safety triangle	A	A	A	A	A
ACCESSORIES - IN CAR ELECTRICAL AND ENTERTAINMENT					
Bluetooth [®] mobile phone kit ¹¹	A	A	A	A	A
CD wallet	A	A	A	A	A
Child activity organiser	A	A	A	A	A
Cruise control kit	A/O	S	S	S	S
iPod/MP3 audio input ¹²	A	A	A	A	A
Mobile phone presenter	A/O	A/O	A/O	A	A
Fridge "Day Tripper" 15L, fridge bag and power adapter	A	A	A	A	A
Garmin Nüvi portable satellite navigation system ¹	A	A	A	A	A
Futuris rear headrest DVD system - single/dual slot ¹	A	A	A	A	-
ACCESSORIES - TOWING AND CARRYING					
Carry bars	A	A	A	A	A
Carry bars accessories–bike carrier, canoe/kayak holder, ski/snowboard carrier ¹⁴	A	A	A	A	A
Roof luggage basket/luggage cover - soft ¹⁴	A	A	A	A	A
Roof luggage box–375L ¹⁴	A	A	A	A	A
Towpack–standard 1,600kg (inc towbar, towball and wiring) ¹⁵	A/O	A/O	A/O	A	A
Towpack–heavy duty 2,300kg (inc towbar, towball, wiring and load levelling kit) ^{16,17,18}	A	A	A	A	A
Rhino-Rack Sportz carry bars ^{1,19}	A	A	A	A	A
Rhino-Rack alloy tray luggage carrier ^{1,19}	A	A	A	A	A
Rhino-Rack luggage carrier - small/medium ^{1,19}	A	A	A	A	A
Rhino-Rack roof top bike carrier ^{1,19}	A	A	A	A	A
Rhino-Rack locking ski & snowboard carriers - 2pr/4pr/6pr ^{1,19}	A	A	A	A	A
Rhino-Rack fishing rod carrier ^{1,19}	A	A	A	A	A
Rhino-Rack universal holder ^{1,19}	A	A	A	A	A
Rhino-Rack kayak/canoe carriers ^{1,19}	A	A	A	A	A

O - Option that must be ordered before the vehicle is manufactured. A - Accessory that can be added at any time. S - Standard. -- - Not available.

1. This accessory is a Supplier Branded Accessory and is not manufactured or warranted by Ford. The warranty is provided by the manufacturer of the accessory. Contact your authorised Ford Dealer for details of the manufacturer's warranty applicable to this accessory. 2. It is recommended that tyres matching the original equipment specification be fitted to Mullins alloy wheels. 3. Set of four. 4. Genuine Ford left and right front weathershields sold separately. 5. Available in 5 or 7 seat variations. 3rd row seat is optional. 6. Mandatory cruise control must also be specified. 7. Available for 4-speed RWD models only. 8. Standard on 5 seater model. Available as Genuine Ford Accessory on 7 seater model. 9. Genuine Ford front and rear waterproof seat covers are sold separately. Rear set only available for 2nd row seat. 10. Not compatible with optional 3rd row seat. 11. Only suitable for Bluetooth[®] compatible phones. 12. iPod or MP3 player not included. iPod is a trademark of Apple Inc. 14. Attaches to Genuine Ford carry bars (sold separately). 15. Subject to State and Territory regulations. Based on standard 5 seater models with 5 occupants (@68kg) and up to 35kg of luggage, using Genuine Ford towpack. 16. Subject to State and Territory regulations. Based on standard 5 seater models with 5 occupants (@68kg) and no luggage, using Genuine Ford heavy duty towpack with load levelling kit. For greater passenger and luggage requirements, please consult your Authorised Ford Dealer for details. 17. For RWD models, an auxiliary transmission oil cooler must be fitted. 18. Not compatible for vehicles fitted with a trailer that has a single arm draw bar. 19. Attaches to Rhino-Rack Sportz carry bars (sold separately).

SPECIFICATIONS AND OPTIONS.

For full specifications and options visit ford.com.au

ENGINE	TERRITORY		TERRITORY TURBO
Engine type	4.0L DOHC DIVCT I6		4.0L DOHC DIVCT Turbo I6
Engine size (cc)	3984		3984
Max. power (DIN)	190kW @ 5250rpm		245kW @ 5250rpm ¹
Max. torque (DIN)	383Nm @ 2500rpm		480Nm @ 2000rpm ¹
No. of valves	24		24
Injection	Sequential multi point electronic fuel injection		Sequential multi point electronic fuel injection
Engine management	Powertrain control module incorporating electronic throttle control		Powertrain control module incorporating electronic throttle control
SUSPENSION			
Front	Virtual Pivot Control Link front suspension		Virtual Pivot Control Link front suspension
Rear	Control Blade Independent Rear Suspension		Control Blade Independent Rear Suspension
FUEL	RWD	AWD	TERRITORY TURBO
Fuel tank capacity (L)	75	75	75
Fuel consumption - ADR 81/01 (L/100km - rounded) ²	12.2	12.5	14.2
Recommended fuel	ULP	ULP	ULP or PULP
BRAKES	TERRITORY		TERRITORY TURBO
Front	Vented disc brakes with twin piston calliper		Large vented disc brakes with twin piston callipers
Rear	Vented rotor with single piston calliper		Vented rotor with single piston calliper
Anti-lock Braking System (ABS) with Electronic Brakeforce Distribution	S		S
TOWING CAPACITIES (kg) Subject to State & Territory regulations.			
Standard towpack	1600 ³		1600 ³
Heavy duty towpack	2300 ⁴		2300 ⁴
Maximum towball download - standard towpack 1600kg	160 ³		160 ³
Maximum towball download - heavy duty towpack 2300kg	230 ⁴		230 ⁴
Maximum towing capacity - unbraked trailer	750		750
Maximum towing capacity - braked trailer	2300 ⁴		2300 ⁴
Rear gross axle load rating when towing	1530		1530
EXTERIOR DIMENSIONS (mm)			
Overall length	4856		4856
Overall width (excluding mirrors)	1898		1898
Overall height	1714		1714
Approach angle	23°		23°
Departure angle	19.8°		17.7°
Ground clearance	179		179
LUGGAGE CAPACITY (L)			
5 Seater (behind 2nd row)	1153L (SAE) / 523L (VDA)		1153L (SAE) / 523L (VDA)
MINIMUM TURNING CIRCLE (m)			
Diameter kerb-to-kerb	11.4		11.4

PERFORMANCE	TX RWD	TX AWD	TS RWD	TS AWD	Ghia RWD	Ghia AWD	Turbo AWD	Ghia Turbo AWD
4.0L DOHC DIVCT I6	S	S	S	S	S	S	-	-
4.0L DOHC DIVCT Turbo I6	-	-	-	-	-	-	S	S
4-Speed automatic transmission with Sequential Sports Shift (SSS)	S	-	S	-	S	-	-	-
ZF 6-speed automatic transmission with Sequential Sports Shift (SSS)	-	S	-	S	-	S	S	S
RIDE AND HANDLING								
Control Blade Independent Rear Suspension	S	S	S	S	S	S	S	S
Virtual Pivot Control Link Front Suspension	S	S	S	S	S	S	S	S
Anti-lock Braking System with Electronic Brakeforce Distribution	S	S	S	S	S	S	S	S
Grade Control Logic	S	S	S	S	S	S	S	S
Traction Control	S	S	S	S	S	S	S	S
Dynamic Stability Control	S	S	S	S	S	S	S	S
Hill Descent Control	-	O ⁵	-	O	-	O	O	O
WHEELS AND TYRES ⁶								
17" x 7.5" styled steel wheels - P235/60 R17 (road biased) tyres	S	S	-	-	-	-	-	-
17" x 7.5" 5 spoke alloy wheels - P235/60 R17 (road biased) tyres	O/A	O/A	S	S	O/A	O/A	-	-
17" x 7.5" 5 spoke split alloy wheels - P235/60 R17 (road biased) tyres	-	-	-	-	S	S	-	-
SUV biased tyres	-	NCO	-	NCO	-	NCO	S	S
18" x 7.5" 5 spoke alloy wheels - P235/55 R18 tyres	-	-	-	-	-	-	S	S
Full size steel spare wheel	S	S	S	S	S	S	-	-
Matching alloy spare wheel	O ⁷	O ⁷	O	O	O	O	S	S
KERB MASS (kg)								
Kerb mass - 5 seater ⁸	1995	2075	2005	2085	2015	2095	2125	2145
Kerb mass - 7 seater ⁹	2025	2105	2035	2115	2045	2125	2155	2175
INTERIOR								
Interior Command Centre (ICC)	S	S	-	-	-	-	S	-
Premium ICC with dual zone climate control, large colour screen and trip computer	-	-	S	S	S	S	-	S
Satellite navigation system	-	-	O	O	O	O	-	O
Trip computer	S	S	S	S	S	S	S	S
Air-conditioning	S	S	S	S	S	S	S	S
Automatic climate control with dual zone temperature control	-	-	S	S	S	S	-	S

S – Standard. O – Options that can be ordered before a vehicle is manufactured. A – Options that can be added at any time. NCO – No cost options that can be ordered before a vehicle is manufactured.

1. Power and torque figures measured using premium unleaded fuel (95 RON). **2.** These figures are obtained from controlled laboratory tests conducted by Ford Motor Company of Australia Limited to Australian Design Rule 81/01, which requires use of 95 RON fuel, and are provided to assist you in comparing the fuel consumption of Territory with other vehicles. The actual fuel consumption you achieve will depend, however, on many factors, including your driving habits, the prevailing conditions, the tyres you select for your vehicle, and your vehicle's equipment, condition and use. **3.** Based on standard 5 seater models with 5 occupants (@68kg) and up to 35kg of luggage, using Genuine Ford towpack. For greater passenger and luggage requirements, please consult your authorised Ford Dealer for details. **4.** Based on standard 5 seater models with 5 occupants (@68kg) and no luggage, using Genuine Ford heavy duty towpack with load levelling kit. For RWD models, an auxiliary transmission cooler must be fitted. For greater passenger and luggage requirements, please consult your authorised Ford Dealer for details.

INTERIOR (continued)	TX RWD	TX AWD	TS RWD	TS AWD	Ghia RWD	Ghia AWD	Turbo AWD	Ghia Turbo AWD
Electrochromatic rear vision mirror (auto-dimming)	-	-	-	-	S	S	-	S
Power adjustable pedals	O	O	O	O	S	S	O	S
Front and rear power windows	S	S	S	S	S	S	S	S
Power mirrors	S	S	S	S	S	S	S	S
Auxiliary power socket	S	S	S	S	S	S	S	S
Steering wheel mounted audio and speed alert switches	S	S	-	-	-	-	-	-
Steering wheel mounted audio, speed alert switches and cruise control	O/A ¹⁰	O/A ¹⁰	S	S	S	S	S	S
Leather wrapped steering wheel	-	-	-	-	S	S	S	S
Load area cargo cover	O/A	O/A	O/A	O/A	S ¹¹ /O/A	S ¹¹ /O/A	O/A	S ¹¹ /O/A
SEATING								
Lumbar adjust (driver)	S	S	S	S	S	S	S	S
Lumbar adjust (passenger)	-	-	-	-	S	S	-	S
Head restraints - height adjustable/retractable	S	S	S	S	S	S	S	S
4-Way driver power seat	S	S	S	S	-	-	S	-
6-Way driver power seat with memory	-	-	-	-	S	S	-	S
60/40 Split fold-down 2nd row rear seat back	S	S	S	S	S	S	S	S
Seat complete fold down capability (2nd and 3rd row)	S	S	S	S	S	S	S	S
3rd row seat	O	O	O	O	O	O	O	O
Fore/aft slide adjustment ¹² for 2nd row seat	O	O	O	O	O	O	O	O
5 Child seat anchor points	S	S	S	S	S	S	S	S
AUDIO								
100 Watt audio system with LCD display screen and single slot CD	S	S	-	-	-	-	S	-
Prestige 100 watt audio system with 6-disc in-dash CD	O	O	-	-	-	-	O	-
Premium audio system with colour screen & 6-disc in-dash CD, 150 watt amplifier & sub-woofer	-	-	S	S	S	S	-	S
EXTERIOR								
Accent colour bumpers and door cladding	S	S	S	S	NCO ¹³	NCO ¹³	-	-
Full body colour bumpers and door cladding	O	O	O	O	S	S	S	S
Auto headlamp on/off	S	S	S	S	S	S	S	S
Fog lamps	O/A	O/A	O/A	O/A	S	S	S	S
Roof carry bar rails	S	S	S	S	S	S	S	S
Towpack - standard 1600kg	O/A	O/A	O/A	O/A	O/A	O/A	O/A	O/A
Front towing eye	O	O	O	O	O	O	O	O
Front and rear towing eyes ¹⁴	O	O	O	O	O	O	O	O
Intelligent Bar System	O/A	O/A	O/A	O/A	O/A	O/A	O/A	O/A
Side steps	O/A	O/A	O/A	O/A	O/A	O/A	O/A	O/A

SAFETY AND SECURITY	TX RWD	TX AWD	TS RWD	TS AWD	Ghia RWD	Ghia AWD	Turbo AWD	Ghia Turbo AWD
Intelligent Safety System	S	S	S	S	S	S	S	S
Dual-stage driver and front passenger airbags	S	S	S	S	S	S	S	S
Side curtain airbags ¹⁵	O	O	S	S	S	S	O	S
Reverse sensing system	A	A	S	S	S	S	A	S
Reverse camera	-	-	O	O	S	S	-	S
Smartshield security system	S	S	S	S	S	S	S	S
Central locking (including liftgate and rear glass)	S	S	S	S	S	S	S	S
Child proof locks - rear doors	S	S	S	S	S	S	S	S
Remote keyless entry with 2 remote control flip keys	S	S	S	S	S	S	S	S
STORAGE								
Minimum of 30 interior storage compartments	S	S	S	S	S	S	S	S
CONSOLE								
Front trinket bin	S	S	S	S	S	S	S	S
Console cup holder x 2	S	S	S	S	S	S	S	S
Centre console bin and tray	S	S	S	S	S	S	S	S
Mobile phone presenter	O/A	O/A	O/A	O/A	O/A	O/A	O/A	O/A
Removable rear rubbish bin	S	S	S	S	S	S	S	S
Tissue holder	S	S	S	S	S	S	S	S
INSTRUMENT PANEL								
Glovebox	S	S	S	S	S	S	S	S
Instrument panel centre compartment	S	S	S	S	S	S	S	S
Instrument panel top tray	S	S	S	S	S	S	S	S
REAR AND OVERHEAD								
Rear load floor - large (wet/dry compartment) ¹⁶	S	S	S	S	S	S	S	S
Rear load floor - small	S	S	S	S	S	S	S	S
Rear quarter trim compartment	S	S	S	S	S	S	S	S
Single sunglasses holder and reading lamps	-	-	S	S	S	S	-	S
3RD ROW SEAT STORAGE								
Armrest bin x 2	S	S	S	S	S	S	S	S
Cup holder x 2	S	S	S	S	S	S	S	S
2ND ROW SEAT AND DOOR STORAGE								
Map pocket x 2	S	S	S	S	S	S	S	S
Rear door expandable drink bottle holder x 2	S	S	S	S	S	S	S	S
Centre armrest cup holders x 2	S	S	S	S	S	S	S	S
Seat pockets x 2	S	S	S	S	S	S	S	S
1ST ROW SEAT AND DOOR STORAGE								
Lockable security drawer - under driver seat	S	S	S	S	S	S	S	S
Handbag compartment x 2	S	S	S	S	S	S	S	S
Map pocket x 2	S	S	S	S	S	S	S	S
Front door expandable drink bottle holder x 2	S	S	S	S	S	S	S	S
Flat folding load floor	S	S	S	S	S	S	S	S
Wet/dry reversible rear floor ¹⁶	S	S	S	S	S	S	S	S
Jack/handle and wheel chock storage	S	S	S	S	S	S	S	S

5. Must also specify optional cruise control on TX AWD. 6. See your Ford Dealer for advice on tyre selection based on your expected usage pattern. 7. Optional alloy wheels for TX models must also be ordered. 8. Approximate kerb (unladen) mass based on standard specification with a full tank of fuel and no occupants or luggage. 9. Approximate kerb (unladen) mass with a full tank of fuel, no occupants or luggage and where optional 3rd row seat is specified. 10. Cruise control available as an option on TX models. 11. Standard on 5 seat models. Option/accessory for 7 seat models. 12. Standard when optional 3rd row seat is specified. 13. Not available with Seduce or Silk exterior colours. 14. Not available with optional towpack. 15. For front and second row passengers. 16. Not available with optional 3rd row seat.



Making your ownership experience even more rewarding.

A great car is just the beginning. We support you with a wide range of services that aim to make you one of the most satisfied vehicle owners in Australia.

Insurance

Ford offers a full suite of insurance products; designed to make it easier to keep your Territory on the road. Along with traditional motor vehicle insurance, we also offer various loan and equity protection products to both private and business buyers.

Considering Finance?

Ford Credit provides a range of finance driven solutions for private, business and fleet customers; making it easier, and more affordable than you may expect, to drive a new Territory. Having financed more than one million vehicles in Australia since 1971, Ford Credit has the products and experience to meet your needs. For more information, ask at your authorised Ford Dealer or visit us at www.fordcredit.com.au

Ford Roadside Assistance

Our commitment to your complete satisfaction plays a major role in everything we do. That is why we provide Ford Roadside Assistance for all Ford Territory models. Wherever and whenever you need emergency roadside assistance, help is available 24 hours a day, 365 days a year. If your vehicle breaks down and cannot be repaired, we will organise to transport your vehicle to the nearest

Ford Dealer or approved service centre for repair. Ford Roadside Assistance is valid for 1 year from the vehicle's first registration.

3 year/100,000km new car warranty.#

For three years or 100,000km, whichever comes first, your Ford is covered against any defects in factory materials or workmanship. This also applies to Genuine Ford Accessories you may have had fitted before you took delivery.

5 year warranty against perforation corrosion.#

It's reassuring to know that the original body of your gleaming new Ford is guaranteed against perforation corrosion for the first five years of its life. If perforation corrosion occurs, we'll fix it for free.

Want to contact us?

For answers to your questions, or help with any concern, contact our Customer Relationship Centre on 13 FORD (13 3673).

Running a fleet?

Our Ford Business Centre is available to assist fleet customers with information on Ford products and services. Call 1300 13 13 30.

Visit us on the web.

If you want more information on Ford or our entire product range, visit us on the Internet at ford.com.au

#Conditions and exclusions apply. See your authorised Ford Dealer for details.

This brochure is designed to provide you with a general introduction to the Ford Products (including available optional equipment) referred to, and should be read in conjunction with the latest specification sheet. Because of changes in conditions and circumstances Ford* reserves the right, subject to all applicable laws, at any time, at its discretion, and without notice, to discontinue or change the features, designs, materials, colours and other specifications and the prices of their products, and to either permanently or temporarily withdraw any such products from the market without incurring any liability to any prospective purchaser or purchasers. The latest specification sheet should be referred to for information on the availability, ordering and use of optional equipment. Always consult an authorised Ford Dealer for the latest information with respect to features, specifications, prices, optional equipment and availability before deciding to place an order. *FORD MOTOR COMPANY OF AUSTRALIA LIMITED. (A.B.N. 30 004 116 223) Registered Office: 1735 Sydney Road, Campbellfield, Victoria 3061, Australia. Printed August, 2008. FML5445eb



Territory Ghia Turbo shown in Seduce with Genuine Ford carry bars and bike carrier.



ford.com.au