

**NEW TERRITORY**



**Feel the difference**

SMART



SUSTAINABILITY



SAFETY



QUALITY



First we invited you to drive it. Now we're inviting you to experience just how different the new Ford Territory feels.

From its superior craftsmanship, to its quietness and fit and finish, you'll feel a level of quality you've never experienced before from Territory.

Feel what it's like to drive a Territory that's more fuel efficient and environmentally conscious than ever before. With smart new economical diesel and petrol engines, you can drive your way towards a better world.

Feel a new level of confidence inspired by Territory's state-of-the-art safety features and technologies, giving you and your family the security you deserve.

Feel what it's like to experience a vehicle with smart, intuitive technologies designed to connect you to your world and make even the most mundane journey more enjoyable.

Not only does the new Territory take you where you want to go, it sets you in motion from the moment you lay eyes on it. Experience cutting-edge style with intelligent design, in a vehicle that balances the functionality of a family car with the style of a premium SUV.



**Feel the difference**

## A compelling presence

Born to be noticed. With a striking new design that embodies Ford's global Kinetic Design philosophy, the new Territory is bound to turn heads wherever it goes.



## Life with no limits

Functional and flexible, the smart new Territory endlessly adapts to your lifestyle, offering you the dynamic driving experience you want, the versatility you need and the style you desire.



## An intelligent interior

What the exterior promises, the interior delivers. With a contemporary interior design and all the latest creature comforts and technologies on board, you can enjoy the new Territory's seamless combination of style and functionality.



Titanium interior with Cashmere leather seat inserts shown.

## Spacious and flexible design

A trip away has never been easier. With a spacious cabin, clever storage solutions and flexible seating arrangements, the new Territory can easily adapt to your needs. Enjoy the generous boot space or simply transform the Territory into a true 7-seater.\*



\*3rd row seat optional on Territory TX.

## Style comes with the Territory

The Territory has evolved. Its eye-catching new design features a prestigious front grille and dynamic styling, giving the vehicle unique energy on the road and a real presence in the driveway. So, you're sure to make a bold statement every time you get behind the wheel.



Titanium model shown.



### Kinetic Design.

The sleek new exterior incorporates Ford's Kinetic Design philosophy, demonstrated through its bold, dynamic lines and full, sculpted surfaces. This philosophy creates the illusion of 'energy in motion', even when the vehicle's standing still.



### Eye catching detail.

The show-stopping new Territory features stylish projector headlights, high-tech LED front position lamps\* and impressive 18" alloy wheels\* with unique machined face finish. With detailing like this, you'll be the envy of your street.



Titanium interior shown.

### Sophisticated interior.

Travel in style in the new Territory's elegant interior. From the luxurious fabrics and organic lines to the chrome and satin finishes, the Territory's new interior reflects the vehicle's sleek, stylish exterior, while the ergonomically designed layout of the cockpit puts all the vehicle's essential features at your fingertips.

\*Only available on Titanium models. \*18" alloy wheels available on TS and Titanium models. Wheels shown are available on Titanium.

## Technology comes with the Territory

Boasting a whole range of new innovative features, the new Territory is now smarter than ever. It's intuitively designed to make your life easier and more enjoyable, and once you try it you won't want to drive anything else.



Satellite Navigation shown. Only available on Titanium models.



### Colour touch screen\*

Control the key functions of your new Territory with ease using the advanced 8" colour touch screen.\* With user-friendly Bluetooth® mobile phone integration\* and Satellite Navigation with Traffic Message Channel® technologies, driving will feel like a whole new experience.



### Advanced integration.

Listening to your favourite songs and keeping in touch with family and friends has never been easier. Territory's 8" colour touch screen\* functions as the fully integrated interface for your iPod,\* smart phone, MP3 or USB device, keeping you connected to your music and your life, wherever you go.



### DVD Player\*<sup>2</sup>

The new Territory Titanium features a stylish roof mounted Alpine rear DVD system.\* With theatre like viewing in the 2nd and 3rd row seats, it's perfect for keeping kids of all ages entertained during big trips. Even the longest journeys will fly by!



### Electric Power Assisted Steering (EPAS).

Enjoy ultimate control in the new Territory with Electric Power Assisted Steering (EPAS). EPAS provides you with relative steering assistance based on driver effort, vehicle speed and road conditions, so you'll not only be able to manoeuvre with ease in the car park, you'll also experience more responsive and precise steering when driving at greater speeds.

\*Only available on TS and Titanium models. The TX model features a fully integrated 5.8" mono LCD screen. \*Bluetooth® is a registered trademark of Bluetooth SIG Inc., and is used under licence. Customers should consult their Ford Dealer on the ability of their mobile phone handset to integrate with the Bluetooth® system prior to making a purchase decision. #Only available on Titanium models. Ford has an arrangement to provide the Suna Traffic Channel broadcast for a minimum of 5 years from the time of vehicle manufacture. Coverage includes Melbourne, Sydney, Brisbane, Canberra, Adelaide, Perth and Gold Coast metropolitan areas. Refer to [www.sunatrafic.com.au](http://www.sunatrafic.com.au) for full details. +iPod is a trademark of Apple Inc. Please refer to [www.ford.com.au](http://www.ford.com.au) for iPod compatibility. <sup>2</sup>Only available on Titanium models. Includes a 10.2" screen, 2 wireless headphones and remote control.



## Advanced diesel technology comes with the Territory

The new Territory's diesel engine is cutting-edge. It's cleaner, more economical and quieter than you'd imagine a diesel could be.



### 2.7L V6 Common Rail Turbo Diesel Engine.

Enjoy optimal performance and efficiency across the new Territory range with the new 2.7L V6 Common Rail Turbo Diesel Engine. Using common rail technology provides improved power, torque and fuel efficiency. This advanced diesel technology not only delivers reduced noise levels and CO<sub>2</sub> emissions, it also achieves outstanding fuel economy (8.2L/100km on Territory RWD models\*). And when heading off down the highway for a weekend away, you can reach 1,000km on one tank\*. So when it comes to the new Territory diesel, there really are no compromises.



### A smoother drive.

With improved fuel economy, surprising quietness and Territory's renowned handling, the new Territory diesel has the drivability you would expect in a petrol sedan and the fuel economy you would expect in a much smaller car. In fact, the only way people will know you're driving a diesel is from the badge on the back.

\*Figure obtained from controlled tests using ADR 81/02 (combined). Actual fuel consumption may vary. \*Based on diesel RWD models, 6.5L/100km, ADR 81/02 (extra urban cycle). Actual fuel consumption may vary.

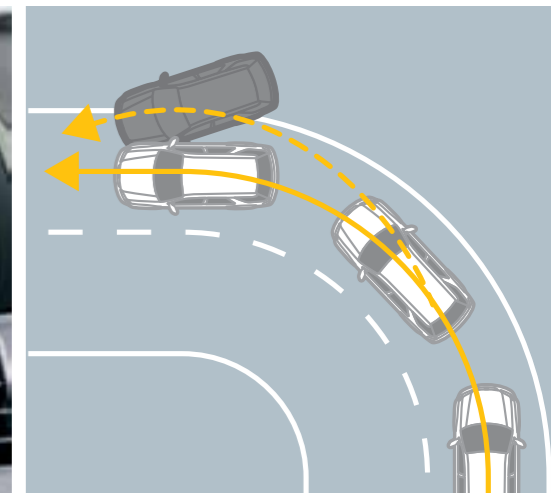
## Safety comes with the Territory

Hidden underneath the sleek new exterior is a whole host of safety features so you can feel comfortable knowing that the new Territory has been engineered to help protect you and your family.



### Reverse camera\*

In the new Territory, safety starts before you even leave the driveway. The reverse camera\* automatically activates when the vehicle is engaged into reverse gear. The wide-angle fish eye lens gives a 130° view up to 10 metres behind the vehicle, giving you visibility and protection against things you wouldn't normally see.



### Dynamic Stability Control with Rollover Mitigation.

Dynamic Stability Control (DSC) strengthens your connection to the road and helps you avoid the problems of oversteer and understeer. DSC tracks the vehicle's movement and then works in tandem with Traction Control and ABS to help keep the vehicle under control. Working in conjunction with DSC, the new rollover mitigation sensors help prevent rollovers caused by extreme lateral forces.



### Surrounded by Safety.

Enjoy peace of mind knowing the new Territory has a range of airbags, including dual stage driver, front passenger, side curtain\* and driver's knee airbag, to help keep you and your family protected in the event of an accident occurring.

### ANCAP Safety rating

With a host of safety features designed to look after you and your family, it's no wonder the new Territory has the maximum ANCAP 5-star safety rating.



\*Only available on TS and Titanium models. #For 1st and 2nd rows.

## Territory TX

With its bold new design and impressive range of features, like Bluetooth®, iPod® and smart phone integration, the new Territory TX has everything you'd hope for in a family car.



### TX Standard Features:

- 4.0L DOHC DI-VCT I6 Petrol engine (RWD only) or
- 2.7L V6 Turbo Diesel Engine (Optional on RWD models. Standard on AWD models.)
- 6-speed automatic transmission with Sequential Sports Shift
- Single-zone automatic climate control
- Bluetooth® mobile phone integration\*
- iPod® and USB integration
- Interior Command Centre with 5.8" LCD screen
- Electric Power Assisted Steering (EPAS)
- Anti-lock Braking System (ABS) with Electronic Brakeforce Distribution (EBD) and Traction Control
- Dynamic Stability Control (DSC) with Rollover Mitigation
- Emergency Brake Assist (EBA)
- Airbags, including dual stage driver, front passenger, driver's knee and side curtain airbags\*
- 17" alloy wheels
- Reverse sensing system
- Optional 3rd row seat

\*Bluetooth® is a registered trademark of Bluetooth SIG Inc., and is used under licence. Customers should consult their Ford Dealer on the ability of their mobile phone handset to integrate with the Bluetooth® system prior to making a purchase decision. iPod is a trademark of Apple Inc. Please refer to [www.ford.com.au](http://www.ford.com.au) for iPod compatibility. \*For 1st and 2nd rows.



## Territory TS

Building on the features of the TX model, the feature packed Territory TS has everything you could want and more. Enjoy cutting-edge technologies, all the latest creature comforts and a new elegant design.



### Includes TX Features plus :

- 3rd row seat (seating for 7 adults)
- Dual zone automatic climate control
- Premium Interior Command Centre with 8" Colour Touch TFT screen
- Premium audio single slot CD system with 150 watt amplifier and sub-woofer
- Reverse parking camera
- Front fog lamps with chrome inner bezel
- 18" alloy wheels
- Lower and upper grilles with painted silver trim
- Leather wrapped steering wheel
- Sunglasses holder incorporating reading lamps



## Territory Titanium

Just when you thought it couldn't get any better, the Territory Titanium really is a class above the rest. With smart technology, smart interior styling and a smarter presence on the road, the Titanium leaves all others wanting.



### Includes TS Features plus:

- Satellite Navigation System with Traffic Message Channel (TMC)<sup>o</sup>
- Alpine rear DVD system<sup>~</sup>
- Leather seat trim (Shadow or Cashmere)
- 6-way power driver's seat with 3-position memory
- Electrochromatic rear vision mirror (auto dimming)
- LED front position lamps
- LED side mirror turn indicators
- Body coloured front fender feature
- 5-spoke Y-design 18" alloy wheels
- Privacy glass\*

<sup>o</sup>Ford has an arrangement to provide the Suna Traffic Channel broadcast for a minimum of 5 years from the time of vehicle manufacture. Coverage includes Melbourne, Sydney, Brisbane, Canberra, Adelaide, Perth and Gold Coast metropolitan areas. Refer to [www.sunattraffic.com.au](http://www.sunattraffic.com.au) for full details. <sup>~</sup>Includes a 10.2" screen, 2 wireless headphones and remote control. \*For rear passengers and back windows.



## Territory vehicle range

With a sleek new design, a host of new features and the choice of a petrol or diesel engine, the new Territory range is sure to offer a model that's perfectly suited to you and your lifestyle.



**TERRITORY TX**



**TERRITORY TS**



**TERRITORY TITANIUM**

All models are available with the following engines:

PETROL • 4.0L DOHC DI-VCT 16 • Available in RWD only

DIESEL • 2.7L V6 Turbo Diesel Engine • Available in RWD and AWD

## Colours and Trim

Make the Territory your own. With a great range of stylish colours and trims, you can customise your new Territory so it's just right for you.

## EXTERIOR COLOURS



Winter White



Vanish



Lightning Strike



Edge



Seduce\*



Silhouette



Chill



Havana



Smoke

## INTERIOR TRIMS



### Titanium

Nudo Print Leather seat inserts in Shadow.



### Titanium (No cost option)

Nudo Print Leather seat inserts in Cashmere.



### TS

Essence Shadow cloth trim seats with Miller suede feel Ebony bolsters.



### TX

Momentum Medium Shadow cloth trim seats with Jacob Shadow bolsters.

\*Available on TS and Titanium models only.

## Accessories

Exterior Styling	TX	TS	Titanium
Spoiler	A	A	A
Side Steps	A	A	A
Alloy Wheel Lock Nut Set	A	A	A
CSA - Alloy Wheels <sup>1,2</sup>	A	A	A
<b>Exterior Protection</b>			
Bonnet Protector - Clear or Tinted	A	A	A
Dust Deflector	A	A	A
Headlamp Guards	A	A	A
Licence Plate Frames	A	A	A
Mud Spats - Front, Rear	A	A	A
Weathershields - Bubble - Front (single LH or RH)	A	A	A
Weathershields - Bubble - Rear (set of 2)	A	A	A
Weathershields - Slimline - Front (set of 2)	A	A	A
<b>Interior Comforts &amp; Storage</b>			
Luggage compartment rubber mat <sup>3</sup>	A	A	A
Cargo retention net <sup>3</sup>	A	A	A
Cargo hammock net <sup>3</sup>	A	A	A
Cargo organiser <sup>3</sup>	A	A	A
Cargo swing net	A	A	A
Carpet Mats - Standard (set of 3)	A	A	A
Carpet Mats - Premium (set of 3)	A	A	A
Load Area Cargo Shelf	A	A	A
DVD/CD wallet	A	A	A
Console Insul-bag	A	A	A
Organiser - child activity	A	A	A
Pollen filter	A	A	A
Rubber Floor Mats - (set of 3)	A	A	A
Smoker's pack	A	A	A
Waterproof seat cover - Front <sup>4</sup>	A	A	A
Waterproof seat cover - Rear <sup>5</sup>	A	A	A
Window shades - Rear Doors - (set of 2)	A	A	A
Window shades - Cargo Area & Tailgate - (set of 3)	A	A	A
Umbrella storage	A	A	A
<b>Safety &amp; Protection</b>			
Fire extinguisher 1kg	A	A	A
First aid kit	A	A	A
Go Technologies® Reversing Camera <sup>2</sup>	A	-	-
Go Technologies® rear camera bumper mount <sup>2</sup>	A	-	-
Go Technologies® rear camera wireless adaptor <sup>2</sup>	A	-	-
Cargo barrier <sup>3</sup>	A	A	A
Safety triangle	A	A	A
<b>Interior Styling</b>			
Scuff Plate Inserts - Alloy or Sports	A	A	A
<b>In Car Entertainment &amp; Electrical</b>			
Auxiliary audio plug in cable	A	A	A
iPod <sup>6</sup> USB Integration cable	A	A	A
Fridge - 15L	A	A	A

In Car Entertainment & Electrical (Continued)	TX	TS	Titanium
Fridge - 31L	A	A	A
Fridge - 49L	A	A	A
Fridge bag - 31L	A	A	A
Fridge bag - 49L	A	A	A
Fridge power adaptor	A	A	A
Garmin Nuvi® 500 portable satellite navigation <sup>2</sup>	A	A	-
Garmin Nuvi® 1250 portable satellite navigation <sup>2</sup>	A	A	-
Garmin Nuvi® 1260 portable satellite navigation <sup>2</sup>	A	A	-
Garmin Nuvi® 1350 portable satellite navigation <sup>2</sup>	A	A	-
Garmin Nuvi® 1450T portable satellite navigation <sup>2</sup>	A	A	-
Garmin Nuvi® 2250 portable satellite navigation <sup>2</sup>	A	A	-
Garmin Nuvi® 2350 portable satellite navigation <sup>2</sup>	A	A	-
Garmin Nuvi® 2360LT portable satellite navigation <sup>2</sup>	A	A	-
Garmin Nuvi® 2460LT portable satellite navigation <sup>2</sup>	A	A	-
Garmin Nuvi® 3760 portable satellite navigation <sup>2</sup>	A	A	-
Garmin Nuvi® 3790T portable satellite navigation <sup>2</sup>	A	A	-
Garmin® traffic receiver <sup>2</sup>	A	A	-
FUTURIS® DVD - Double Player <sup>2</sup>	A	A	-
FUTURIS® DVD - Single Player <sup>2</sup>	A	A	-
<b>Towing and Carrying</b>			
Carry Bars	A	A	A
Ski Carrier <sup>7</sup>	A	A	A
Bike Carrier <sup>7</sup>	A	A	A
Ski/Snowboard Carrier <sup>7</sup>	A	A	A
Kayak/Canoe Carrier <sup>7</sup>	A	A	A
Rhino-Rack® Sportz Carry Bars <sup>2</sup>	A	A	A
Rhino-Rack® S400 kayak/canoe carrier <sup>2, 8</sup>	A	A	A
Rhino-Rack® Explorer Series kayak holder <sup>2, 8</sup>	A	A	A
Rhino-Rack® RX kayak carrier <sup>2, 8</sup>	A	A	A
Rhino-Rack® RXX kayak carrier extension <sup>2, 8</sup>	A	A	A
Rhino-Rack® Luggage Alloy Tray <sup>2, 8</sup>	A	A	A
Rhino-Rack® Steel Mesh Luggage Carrier - small, medium, large <sup>2, 8</sup>	A	A	A
Rhino-Rack® Luggage Bags - Half, small, medium, large, X Large <sup>2, 9</sup>	A	A	A
Rhino-Rack® Roof Top Bike Carrier <sup>2, 8</sup>	A	A	A
Rhino-Rack® Universal Holder <sup>2, 8</sup>	A	A	A
Rhino-Rack® Fishing Rod Carrier <sup>2, 8</sup>	A	A	A
Rhino-Rack® Locking Ski & Snowboard Carriers - 2pr, 4pr, 6pr <sup>2, 8</sup>	A	A	A
Towpack - Standard <sup>10</sup>	A/O	A/O	A/O
Towpack - Heavy Duty (Includes Load Levelling Kit) <sup>11</sup>	A	A	A

A = Accessory that can be added at any time O = Option that can be ordered before a vehicle is manufactured - = Not available.

1. Set of 4. Wheels and tyres sold separately. It is recommended that tyres matching original equipment specification be fitted to CSA alloy wheels. 2. This accessory is a Supplier Branded Accessory and is not manufactured or warranted by Ford. The warranty is provided by the manufacturer of the accessory. The information in this document relating to the accessory is based on information provided by the accessory manufacturer. Contact your authorised Ford Dealer for details of the accessory manufacturer's warranty applicable to this accessory. 3. Not compatible with 3rd row seat. 4. Driver's and passenger's waterproof seat covers are sold separately. 5. Not available for 3rd row seat. 6. iPod is a trademark of Apple Inc. Please refer to www.ford.com.au for iPod compatibility. 7. Attaches to Genuine Ford carry bars (sold separately). 8. Attaches to Rhino Rack Sportz Carry Bars (sold separately). 9. Attaches to Rhino Rack Luggage Alloy Tray or Steel Mesh Luggage Tray (sold separately). 10. 1,600kg is the maximum towing capacity using a Genuine Ford tow pack. To comply with these limits, occupants and/or luggage may need to be restricted.



## Personalise your Territory. The choice is yours.

The Ford Vehicle Personalisation accessory range lets you personalise your Territory to perfectly suit your needs.



### Side Steps.

Made from strong, lightweight aluminium, the side steps provide easy access into the vehicle.



### Carpet Mats.

Enhance your vehicle's appearance with perfectly colour-matched mats, which are also designed to help protect your vehicle's interior.



### Cargo Barrier.

The wire mesh cargo barrier helps restrain up to 120kg of load and helps minimise movement of items during transit. Not compatible with 3rd row seat.



### CSA Alloy Wheels.<sup>1,2</sup>

Personalise your vehicle with CSA Alloy Wheels. Made from high grade alloy for superior strength.



### Carry Bars.

Carry up to 80kg of extra cargo with these lightweight aluminium carry bars. Strong and lockable, the bars can be easily installed and removed as needed.



### Headlamp Guards.

Made from tough, durable acrylic, the headlamp guards help deflect stones and other objects.



### Towpack - heavy duty 2,300/2,700kg.<sup>11</sup>

With a Genuine Ford heavy duty towpack, towing big loads has never been easier. Great for boats and trailers, work and play. Includes towbar, towball, wiring and load levelling kit.



### Bonnet Protector.

Look after your Territory with a bonnet protector, designed to help deflect stones and other objects. Available in a clear or tinted finish.



### Rhino Rack Products.<sup>2</sup>

Enjoy even more storage with this strong, durable accessory range, which includes carry bars, bike and luggage carriers just to name a few. Carry bars and canoe carrier shown.

For a full range of accessories, please visit [ford.com.au/newterritory](http://ford.com.au/newterritory)

For further details regarding passenger and luggage restrictions, please consult your authorised Ford Dealer and/or refer to the Territory owner's manual under "Trailer Towing" for further guidance. Subject to State and Territory regulations. <sup>11</sup> 2,300kg is the maximum towing capacity of Territory RWD models. 2,700kg is the maximum towing capacity of Territory AWD Diesel models. Maximum towing capacity using a Genuine Ford heavy duty towpack with load levelling kit. To comply with these limits, occupants and/or luggage may need to be restricted. For further details regarding passenger and luggage restrictions, please consult your authorised Ford Dealer for details and/or refer to the Territory owner manual under "Trailer Towing" for further guidance. Subject to State and Territory regulations.

## Mechanical specifications

Engine	Petrol	Diesel
Engine type	4.0L DOHC DIVCT I6	2.7L V6 Common Rail Turbo Diesel
Engine size (cc)	3984	2720
Compression ratio	10.3 : 1	17.3 : 1
Max. power (DIN)	195kW @ 6000rpm <sup>1</sup>	140kW @ 4000rpm
Max. torque (DIN)	391Nm @ 3250rpm <sup>1</sup>	440Nm @ 1900rpm
No. of valves	24	24
Bore x stroke	92.26mm x 99.31mm	81.00mm x 88.00mm
Injection	Sequential multipoint electronic fuel injection	High pressure common rail
Engine management	Powertrain control module incorporating electronic throttle control	Electronic powertrain control module

### Suspension

Front	Virtual Pivot Control Link front suspension
Rear	Control Blade Independent Rear Suspension

Transmissions/Ratios	RWD	RWD	AWD
1st	4.171	4.171	4.171
2nd	2.342	2.342	2.342
3rd	1.521	1.521	1.521
4th	1.143	1.143	1.143
5th	0.867	0.867	0.867
6th	0.691	0.691	0.691
Reverse	3.4	3.4	3.4
Final drive ratio	3.23 : 1	3.23 : 1	3.46 : 1

Fuel	RWD	RWD	AWD
Fuel tank capacity (L)	75	75	
Combined fuel consumption - ADR 81/02 (L/100km - rounded) <sup>2</sup>	<b>TX</b>	8.2	8.8
	<b>TS</b>	8.2	9.0
	<b>Titanium</b>	8.2	9.0
CO <sub>2</sub> emissions (g/km) <sup>2</sup>	249	217	TX: 232 TS and Titanium: 236
Recommended fuel	ULP or PULP		Diesel

### Brakes

Front	Vented disc brakes with twin piston caliper
Rear	Vented rotor with single piston caliper

### Towing capacities (kg)

	RWD	RWD	AWD
Subject to State & Territory regulations			
Standard towpack	1600 <sup>3</sup>	1600 <sup>3</sup>	1600 <sup>3</sup>
Heavy duty towpack	2300 <sup>4</sup>	2300 <sup>4</sup>	2700 <sup>4</sup>
Maximum towball download - standard towpack 1,600kg	160 <sup>3</sup>	160 <sup>3</sup>	160 <sup>3</sup>
Maximum towball download - heavy duty towpack 2,300kg/2,700kg	230 <sup>4</sup>	230 <sup>4</sup>	270 <sup>4</sup>
Maximum towing capacity - unbraked trailer	750	750	750
Maximum towing capacity - braked trailer	2300 <sup>4</sup>	2300 <sup>4</sup>	2700 <sup>4</sup>
Rear gross axle load rating when towing	1530	1530	1530

### Luggage capacity (L)

5 Seater (behind 2nd row)	1153L
---------------------------	-------

### Exterior dimensions (mm)

Overall length	4883
Overall width (excluding mirrors)	1898
Overall height	1716
Wheelbase	2843
Front track	1626
Rear track	1597
Front overhang	951
Rear overhang	1089
Approach angle	22.6°
Departure angle	23.5°
Ground clearance	175

### Interior dimensions (mm)

Front headroom	1074
Front legroom	1122
Front hiproom	1525
Front shoulder room	1548
2nd row headroom (5 seater)	1006
2nd row legroom (5 seater)	1015
2nd row hiproom	1524
2nd row shoulder room	1528
3rd row headroom	926
3rd row legroom	859
<b>Minimum turning circle(m)</b>	
Diameter kerb-to-kerb	11.4

Kerb mass (kg)	Petrol			Diesel					
	TX RWD	TS RWD	Titanium RWD	TX RWD	TS RWD	Titanium RWD	TX AWD	TS AWD	Titanium AWD
Kerb mass - 5 seater <sup>5</sup>	1967	1976	2012	2021	2038	2074	2107	2109	2132
Kerb mass - 7 seater <sup>6</sup>	2002	2011	2047	2055	2072	2109	2142	2144	2167

S = Standard. O = Option that can be ordered before a vehicle is manufactured. A = Accessory that can be added at any time.

1. Petrol power and torque figures measured using premium unleaded fuel (95 RON). 2. Figures obtained from controlled tests using ADR 81/02 combined cycle. Actual consumption will depend on many factors, including driving habits, prevailing conditions and your vehicle's equipment, condition and use. 3. 1,600kg is the maximum towing capacity using a Genuine Ford tow pack. To comply with these limits, occupants and/or luggage may need to be restricted. For further details regarding passenger and luggage restrictions, please consult your authorised Ford Dealer and/or refer to the Territory owner's manual under 'Trailer Towing' for further guidance. Subject to State and Territory regulations.

## Specifications and options

Engine & transmission	TX RWD	TX AWD	TS RWD	TS AWD	Titanium RWD	Titanium AWD
4.0L DOHC DI-VCT I6 Petrol	S	–	S	–	S	–
2.7L V6 Common Rail Turbo Diesel	O	S	O	S	O	S
6-speed automatic transmission with Sequential Sports Shift (SSS)	S	S	S	S	S	S
<b>Ride and handling</b>						
Rear Wheel Drive	S	–	S	–	S	–
All Wheel Drive	–	S	–	S	–	S
Virtual Pivot Control Link Front Suspension	S	S	S	S	S	S
Control Blade Independent Rear Suspension	S	S	S	S	S	S
17" x 7.5" alloy wheel (5 spoke) - P235/60 R17 tyres <sup>7</sup>	S	S	–	–	–	–
18" x 7.5" alloy wheel (10 spoke) - P235/55 R18 tyres <sup>7</sup>	–	–	S	S	–	–
18" x 7.5" alloy wheel (5 Y-spoke) - P235/55 R18 tyres <sup>7</sup>	–	–	–	–	S	S
17" steel spare wheel - P235/60 R17 tyre	S	S	S	S	S	S
<b>Exterior</b>						
Prestige paint	NCO	NCO	NCO	NCO	NCO	NCO
Projector headlamps	S	S	S	S	S	S
Front fog lamps	–	–	S	S	–	–
Front LED position lamps	–	–	–	–	S	S
Lower and upper grilles with painted silver trim	–	–	S	S	–	–
Lower and upper grilles with chrome trim	–	–	–	–	S	S
Body coloured bumpers, side mirrors and door handles	S	S	S	S	S	S
Privacy glass <sup>8</sup>	–	–	–	–	S	S
Roof carry bar rails	S	S	S	S	S	S
Towpack - standard 1,600kg <sup>3</sup>	O/A	O/A	O/A	O/A	O/A	O/A
<b>Instrumentation and controls</b>						
Interior Command Centre (ICC) with 5.8" LCD screen	S	S	–	–	–	–
Premium ICC with 8" Colour Touch TFT screen	–	–	S	S	S	S
Satellite Navigation System with Traffic Message Channel <sup>9</sup>	–	–	–	–	S	S
Trip computer (Including: trip time, fuel used, average fuel economy, instantaneous fuel economy, average speed, distance to empty)	S	S	S	S	S	S
Front windscreen wipers with variable intermittent feature	S	S	S	S	S	S
Rear tailgate remote release	S	S	S	S	S	S
Cruise control with steering wheel mounted controls	S	S	S	S	S	S
Leather wrapped steering wheel	–	–	S	S	S	S
<b>Comfort and convenience</b>						
Single zone automatic climate control	S	S	–	–	–	–
Dual zone automatic climate control	–	–	S	S	S	S
Front and rear power windows	S	S	S	S	S	S
Automatic headlamps ON/OFF feature	S	S	S	S	S	S
Power adjustable side mirrors	S	S	S	S	–	–
Power adjustable side mirrors with integrated turn lamps	–	–	–	–	S	S
Vanity mirror lamps for driver and front passenger	S	S	S	S	S	S
Remote keyless entry with two remote control flip keys	S	S	S	S	S	S
Electrochromatic rear vision mirror (auto-dimming)	–	–	–	–	S	S
<b>Seating</b>						
Seat trim - fabric	S	S	S	S	–	–
Seat trim - leather appointed	–	–	–	–	S	S
5 seat capacity	S	S	NCO	NCO	NCO	NCO
7 seat capacity (with 3rd row seat)	O	O	S	S	S	S
Adjustable driver's seat lumbar support	S	S	S	S	S	S
Adjustable passenger's seat lumbar support	–	–	–	–	S	S
4-way power adjustable driver's seat	S	S	S	S	–	–
6-way power adjustable driver's seat with 3-position memory	–	–	–	–	S	S
60/40 split fold-down 2nd row seat back	S	S	S	S	S	S
2nd row flat fold seat capability	S	S	S	S	S	S
3rd row flat fold seat capability with 2nd row slide adjustment	O	O	S	S	S	S

NCO = No Cost Option that can be ordered before a vehicle is manufactured. – = Not available.

4, 2,300kg is the maximum towing capacity of Territory RWD models. 2,700kg is the maximum towing capacity of Territory AWD diesel models. Maximum towing capacity using a Genuine Ford heavy duty tow pack with load levelling kit. To comply with these limits, occupants and/or luggage may need to be restricted. For further details regarding passenger and luggage restrictions, please consult your authorised Ford Dealer and/or refer to the Territory owner's manual under 'Trailer Capacities' for further guidance. Subject to State and Territory regulations. 5. Approximate kerb (unladen) mass based on standard specification of a 5 seat model with a full tank of fuel and no occupants or luggage. 6. Approximate kerb (unladen) mass based on standard specification of a 7 seat model with a full tank of fuel and no occupants or luggage. 7. Set of 4. 8. For rear passengers and back windows. 9. Ford has an arrangement to provide the Suna Traffic Channel broadcast for a minimum of 5 years from the time of vehicle manufacture. Refer to [www.sunatrafic.com.au](http://www.sunatrafic.com.au) for details of area coverage.

## Specifications and options (continued)

<b>Audio &amp; Communication</b>	<b>TX RWD</b>	<b>TX AWD</b>	<b>TS RWD</b>	<b>TS AWD</b>	<b>Titanium RWD</b>	<b>Titanium AWD</b>
Single slot CD audio system with AM/FM radio	S	S	-	-	-	-
Premium audio single slot CD system with 150 watt amplifier & sub-woofer	-	-	S	S	S	S
Alpine rear DVD entertainment system with 10.2" screen, 2 wireless headphones and remote control	-	-	-	-	S	S
iPod <sup>10</sup> integration	S	S	S	S	S	S
USB input facility for music files	S	S	S	S	S	S
Bluetooth <sup>®</sup> mobile phone integration <sup>11</sup>	S	S	S	S	S	S
3.5mm auxiliary audio input	S	S	S	S	S	S
3 x auxiliary power sockets	S	S	S	S	S	S
<b>Safety and security</b>						
Intelligent Safety System	S	S	S	S	S	S
Dual-stage driver airbag	S	S	S	S	S	S
Front passenger airbag	S	S	S	S	S	S
Side curtain airbags <sup>12</sup>	S	S	S	S	S	S
Driver's knee airbag	S	S	S	S	S	S
Pyrotechnic seatbelt buckle pretensioners <sup>13</sup>	S	S	S	S	S	S
Advanced restraints module	S	S	S	S	S	S
Crash severity sensor	S	S	S	S	S	S
Driver's seat position sensor	S	S	S	S	S	S
Beltminder system <sup>13</sup>	S	S	S	S	S	S
Dynamic Stability Control with Rollover Mitigation	S	S	S	S	S	S
Traction Control	S	S	S	S	S	S
Grade Control Logic	S	S	S	S	S	S
Anti-lock Braking System	S	S	S	S	S	S
Electronic Brakeforce Distribution	S	S	S	S	S	S
Emergency Brake Assist	S	S	S	S	S	S
Reverse sensing system	S	S	S	S	S	S
Reverse camera	-	-	S	S	S	S
Central locking - all doors (including liftgate and rear glass)	S	S	S	S	S	S
Child proof locks - rear doors	S	S	S	S	S	S
<b>Storage</b>						
30 interior storage compartments	S	S	S	S	S	S
<b>Console</b>						
Tambour door compartment with trinket bin and tissue box holder	S	S	S	S	S	S
Console cup holder x 2	S	S	S	S	S	S
Centre console bin with iPod <sup>10</sup> holder	S	S	S	S	S	S
Removable rear rubbish bin	S	S	S	S	S	S
<b>Instrument panel</b>						
Glovebox	S	S	S	S	S	S
<b>Rear and overhead</b>						
Rear load floor compartment - large (wet/dry compartment) <sup>14</sup>	S	S	-	-	-	-
Rear load floor compartment - small	S	S	S	S	S	S
Rear quarter trim compartment	S	S	S	S	S	S
Sunglasses holder incorporating reading lamps	-	-	S	S	S	S
<b>3rd row seat storage</b>						
Armrest bin x 2	S	S	S	S	S	S
Cup holder x 2	S	S	S	S	S	S
<b>2nd row seat and door storage</b>						
Map pocket x 2	S	S	S	S	S	S
Rear door expandable drink bottle holder x 2	S	S	S	S	S	S
Centre armrest cup holders x 2	S	S	S	S	S	S
Seat pockets x 2	S	S	S	S	S	S
<b>1st row seat and door storage</b>						
Lockable security drawer - under driver's seat	S	S	S	S	S	S
Handbag compartment x 2	S	S	S	S	S	S
Map pocket x 2	S	S	S	S	S	S
Front door expandable drink bottle holder x 2	S	S	S	S	S	S
<b>Other</b>						
Flat folding load floor	S	S	S	S	S	S
Wet/dry reversible rear floor <sup>14</sup>	S	S	-	-	-	-
Jack/handle and wheel chock storage	S	S	S	S	S	S
Cargo retention anchorages	S	S	S	S	S	S

S = Standard. O = Option that can be ordered before a vehicle is manufactured. A = Accessory that can be added at any time.  
 NCO = No Cost Option that can be ordered before a vehicle is manufactured. - = Not available.

10. iPod is a trademark of Apple Inc. Please refer to ford.com.au for iPod compatibility. 11. Bluetooth<sup>®</sup> is a registered trademark of Bluetooth SIG Inc., and is used under licence. Customers should consult their Ford dealer on the ability of their mobile phone handset to integrate with the Bluetooth<sup>®</sup> system prior to making a purchase decision. 12. For 1st and 2nd rows. 13. Driver and front passenger only. 14. Standard on TS and Titanium when 5 seat configuration is chosen.

## Making your ownership experience even more rewarding

A great car is just the beginning. We support you with a wide range of services that aim to make you one of the most satisfied vehicle owners in Australia.



Speak to your Ford Dealer today about how we can help you make the most out of your vehicle ownership experience.

### myFord Capped Price Servicing

Your new Ford vehicle now gives you access to myFord Capped Price Servicing, which means it makes even more sense to have your Ford looked after by the people who know your Ford back to front, inside and out. With myFord Capped Price Servicing, Ford will publish the maximum price you will pay for a logbook service at participating Authorised Ford Dealers for all vehicles built from 2007 up to 6 years or 105,000 kilometres, whichever comes first. In addition, when vehicles are serviced under myFord Capped Price Servicing, Retail and Small Business Customers will also receive a further 12 months myFord Standard Roadside Assistance (RRP \$90). For more details visit your local Ford Dealer or visit [ford.com.au/myfordcps](http://ford.com.au/myfordcps) for full terms and conditions.

### myFord Roadside Assistance.

Our commitment to your complete satisfaction plays a major role in everything we do. That is why we provide myFord Roadside Assistance for all Ford Territory models. Wherever and whenever you need emergency roadside assistance, help is available 24 hours a day, 365 days a year. If your vehicle breaks down and cannot be repaired, we will organise to transport your vehicle to the nearest Ford Dealer or approved service centre for repair. myFord Roadside Assistance is valid for 1 year from the vehicle's first registration.

### 3 year/100,000km new car warranty.\*

For three years or 100,000km, whichever comes first, your Ford is covered

against any defects in factory materials or workmanship. This also applies to Genuine Ford Accessories you may have had fitted before you took delivery.

### 5 year warranty against perforation corrosion.\*

It's reassuring to know that the original body of your gleaming new Ford is guaranteed against perforation corrosion for the first five years of its life. If perforation corrosion occurs, we'll fix it for free.

### myFord Warranties & Insurance.

When you first turn the key of your brand new Ford Territory you want to do so without a care in the world. Our range of myFord products gives you that extra peace of mind. For more information about myFord Warranties and Insurance, visit your participating Ford Dealer for further details on the plans that best suit your needs. Terms, conditions and eligibility criteria apply.

### Want to contact us?

For answers to your questions, or help with any concern, contact our Customer Relationship Centre on 13 FORD (13 3673).

### Running a fleet?

Our Ford Business Centre is available to assist fleet customers with information on Ford products and services. Call 1300 13 13 30.

### Visit us on the web.

If you want more information on Ford or our entire product range, visit us on the Internet at [ford.com.au](http://ford.com.au).

#Conditions and exclusions apply. See your authorised Ford Dealer for details.

This brochure is designed to provide you with a general introduction to the Ford Products (including available optional equipment) referred to, and should be read in conjunction with the latest specification sheet. Because of changes in conditions and circumstances Ford\* reserves the right, subject to all applicable laws, at any time, at its discretion, and without notice, to discontinue or change the features, designs, materials, colours and other specifications and the prices of their products, and to either permanently or temporarily withdraw any such products from the market without incurring any liability to any prospective purchaser or purchasers. The latest specification sheet should be referred to for information on the availability, ordering and use of optional equipment. Always consult an authorised Ford Dealer for the latest information with respect to features, specifications, prices, optional equipment and availability before deciding to place an order. \*FORD MOTOR COMPANY OF AUSTRALIA LIMITED. (A.B.N. 30 004 116 223) Registered Office: 1735 Sydney Road, Campbellfield, Victoria 3061, Australia. Printed August, 2011. TERRI0051\_eb\_R



Click to Request



Quote



Hot Deals



Test Drive



Feel the difference

[ford.com.au](http://ford.com.au)