

**Accord**  
SPORT HYBRID



# A hybrid of sport and sophistication.

Introducing the Accord Sport Hybrid – the quintessence of sporting appeal and sophistication with intelligent systems and impressive efficiency. The dynamic drive you expect from the Honda Accord now comes powered with the assistance of an electric motor delivering superior performance, no compromises.

The Accord Sport Hybrid is a true embodiment of Honda's Earth Dreams Technology. Channelled through Honda's Electronic

Continuously Variable Transmission (E-CVT), the 2.0 litre DOHC i-VTEC engine and powerful electric motor intelligently switch between electric and petrol modes for incredible torque regulation and class leading fuel consumption at just 4.6L/100km\*.

And with sleek aerodynamics to match, the Honda Accord Sport Hybrid is nothing short of a stylish, sophisticated sports car.

\*JATO Dynamics (01/05/15), Medium <\$60K Segment. Fuel consumption figure based on ADR81/02 test results.



## IF LOOKS COULD THRILL.

At first glance the Accord Sport Hybrid embodies the iconic design of the original. But look closer and you'll find many unique touches, such as the modern blue accent that adorns the front grille, headlights and tail lights.

Other details hint at the power contained within. Like the sporty shark fin antenna, or the striking two-toned 18-inch alloy wheels. A clever array of LED Daytime Running Lights (DRL) add a refined aesthetic edge.

Automatically sensing nightfall, the LED Projector beam headlights come to life. Complete with Active Cornering Light technology (ACL), a safety feature has never seemed so stylish.

When you are finally ready to step inside, leave your keys in your bag or pocket and the Accord Sport Hybrid will sense your touch and unlock automatically.





## IT'S TIME TO TAKE CONTROL.

Here, inside the cockpit, you'll find the epitome of elegance and modernity from the exceptional ergonomics in the cock-pit style cabin to the leather-appointed\* upholstery. You'll also find intuitive controls designed to put powerful technology in your hands. Everything has been purposefully designed around the driver.

At the heart of it all lies the colour touchscreen audio display system, connecting you via Bluetooth® to any compatible mobile device so that you may make a call or listen to your favourite music powered by 360 watts of audio from six speakers and a subwoofer.

Above the centre touchscreen lies the intelligent-Multi Information Display (i-MID), which acts as a display for the built-in satellite navigation with SUNA live traffic updates+ as well as the multi-angle reversing camera with three modes to choose from: normal view, wide view and top-down view. Then when it's time to go, push the start button on the dash, adjust your seating with 2-position memory, independently select the temperature for both the driver and passenger and open the electric sunroof to let the sun shine in.

## IDEAS FROM THE CUTTING EDGE.

### Efficient Performance

Honda is renowned for pursuing innovative technologies that challenge convention. The Accord Sport Hybrid does just that without sacrificing economy for power. Thanks to the efficient 2-motor hybrid system, the Accord Sport Hybrid boasts an impressive 146kW of power and 307Nm of torque whilst reducing emissions and fuel consumption to just 107g/km\* and 4.6L/100km\* respectively. With MacPherson Strut front suspension plus Independent Multi-Link rear suspension, the Accord Sport Hybrid is one truly responsive drive. With a lightweight body structure and the addition of aerodynamic under body panels, you'll feel the car lock to the road with stability, agility and efficiency. The result: a sporty, responsive and efficient drive.

### Sport Hybrid Intelligent Multi-Mode Drive (i-MMD)

To maximise efficiency on the road, the Accord Sport Hybrid switches between three distinct drive modes: Electric Vehicle (EV) mode, Hybrid Vehicle (HV) mode and Engine Drive mode.

Electric Vehicle mode is used for start up, low to moderate speed driving or when stopped if the battery is sufficiently charged. In suitable conditions, for example at a red light, the Accord Sport Hybrid will go into EV mode; the EV indicator light located on the intuitive gauge cluster will display green to let you know that the Accord Sport Hybrid is running on battery power alone. Whilst in EV mode, all your comforts such as audio display and climate control will remain operational. Depending on the battery charge level, the Accord Sport Hybrid will take off in either EV mode or HV mode as soon as you release the brake pedal and begin to accelerate.

Hybrid Vehicle mode is used for strong acceleration, this employs the electric motor and petrol engine to achieve the additional power. When high-speed cruising is required, Engine Drive mode will take over using only the efficient petrol engine.

### Electric Continuously Variable Transmission (E-CVT)

Without a pulley or belt in sight, E-CVT reinvents transmission for the hybrid age to provide smooth and powerful acceleration. As one electric motor propels the car forward, the second works to charge the lithium-ion battery.

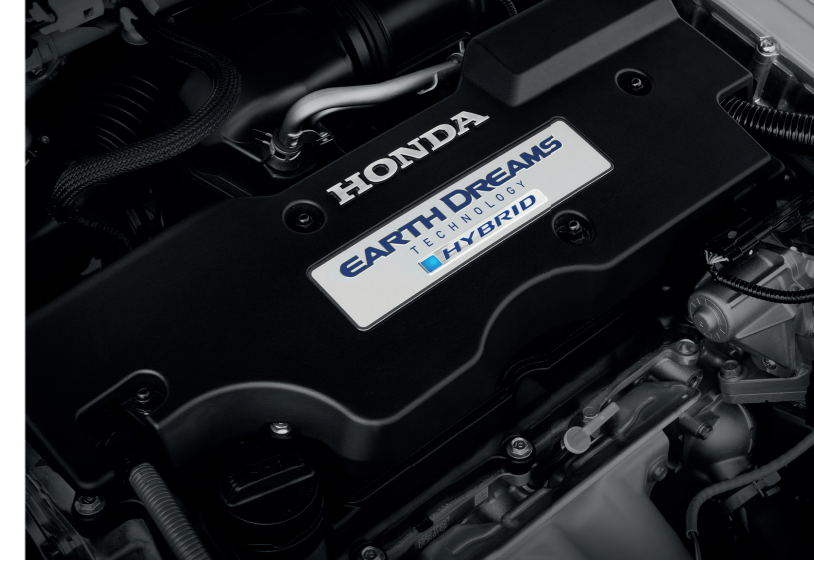
### Regenerative Braking

In addition to the motor generator, the battery is replenished every time your foot leaves the accelerator pedal, drawing on regenerative braking to save on fuel usage.

### Driver Feedback Display

The Accord Sport Hybrid will even assist you in improving efficiency. Continual feedback is displayed on the Multi-Information Display (MID), where the vehicle icon and its surrounding ambient glow change based on your driving style. Over time you'll naturally adapt your driving style and enjoy greater fuel economy.

\*Consumption figures quoted are based on ADR81/02 combined test results.



\*Leather seat trim includes non-leather material on selected, high-impact surfaces. †The Bluetooth word mark is owned by Bluetooth SIG, Inc. and use of such mark by Honda is under licence. Compatibility and functionality will vary depending on the device. +SUNA is a registered trademark of Intelmatics Pty. Ltd. Coverage includes Melbourne, Sydney, Brisbane, Gold Coast, Adelaide, Perth and Canberra metropolitan areas. Refer to [www.sunattraffic.com.au](http://www.sunattraffic.com.au) for full details.



Accord Sport Hybrid shown in Modern Steel Metallic.

## SAFETY IN SPADES.

Honda is committed to designing every model with exceptional safety features. The Accord Sport Hybrid is no exception with an array of safety technologies such as Honda's innovative LaneWatch, Advanced Driver Assist System (ADAS\*) and Acoustic Vehicle Alerting System (AVAS), designed to give you maximum driving support.

### LaneWatch

Honda's LaneWatch utilises a camera mounted in the passenger side mirror to mitigate one of the most notorious blind spots for any vehicle. Simply indicate left or press the LaneWatch button on the indicator stalk to activate the camera display on the i-MID to show nearly four times the view of a regular mirror, as well as 'car length' markers, so you can easily and safely switch lanes.

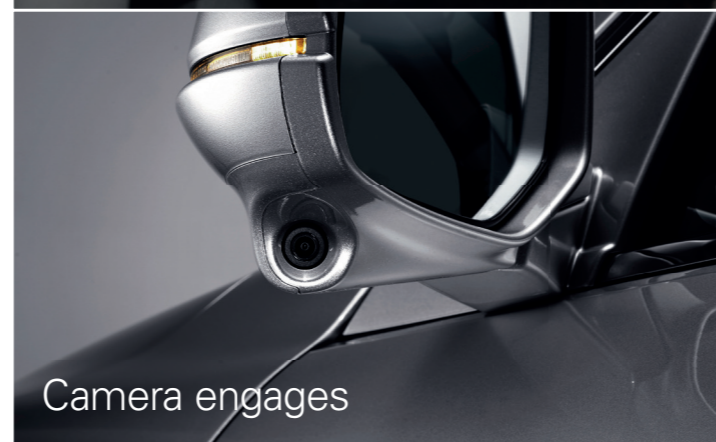
### ADAS\*

Nothing demonstrates Honda's endless search for safety more than the intuitive nature of the Advanced Driver Assist System (ADAS) featuring Adaptive Cruise Control (ACC), Collision Mitigation Braking System (CMBS) and Lane Keep Assist System (LKAS).

\*ADAS technologies should not be used in place of safe driving practices. Drivers should continue to monitor the road ahead at all times.



Activate



Camera engages



View on screen

# Accord Sport Hybrid Specifications

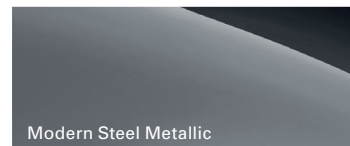
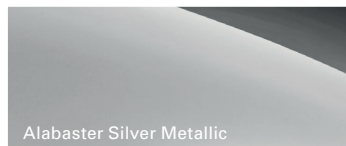
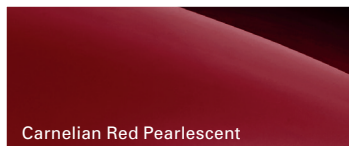
Description	Sport Hybrid
<b>ENGINE</b>	
Engine type	
- Intelligent-Multi Mode Drive (i-MMD) In-line 4 cylinder DOHC i-VTEC	•
Capacity	2.0 litre-1993cc
Compression ratio	13
Bore x Stroke (mm)	81 x 96.7
Fuel type (minimum recommended)	
- Unleaded (RON91)	•
Fuel supply system - Honda Programmed Fuel Injection (PGM-FI)	•
Drive By Wire throttle (DBW)	•
<b>TRANSMISSION</b>	
E-CVT Transmission type	•
<b>PERFORMANCE AND FUEL ECONOMY</b>	
Maximum power (kW @ rpm)	
- engine	105 @ 6200
- motor	124 @ 3857-8000
Maximum power (kW) (combined)	
- engine & motor	146
Maximum torque (Nm @ rpm)	
- engine	165 @ 4500
- motor	307 @ 0-3857
Maximum torque (Nm) (combined)	
- engine & motor	307
Fuel consumption (litres/100km)*	
- combined	4.6
- urban	3.7
- extra urban	5.2
CO2 emissions (g/km)*	107
Emission standard	
- ADR 79/04 Euro 5	•
<b>CHASSIS</b>	
Suspension	
- MacPherson strut (front)	•
- Multi-link (rear)	•
Power steering - electric	•
Stabiliser bars (front and rear)	•
Brakes	
- ventilated disc (front)	•
- solid disc (rear)	•
<b>EXTERIOR</b>	
Door handles	
- chrome	•
Antenna type	
- shark fin	•
Electric sunroof	•
Electrically adjustable door mirrors with:	
- LED turn indicators	•
- reverse tilt-down function (passenger side)	•
Blue accents (front lights, grille and tail lights)	•
Exhaust (single)	•
Rear window demister	•
Water dispersing front window glass	•
Wipers (front)	
- rain-sensing auto	•
<b>EXTERIOR LIGHTS</b>	
Headlights	
- projector beam LED	•
- coming home/leaving home function	•
- auto on/off dusk-sensing	•
- Active Cornering Lights (ACL)	•
- High-beam Support System (HSS)	•
LED Daytime Running Lights (DRL)	•
LED rear combination tail lights	•
<b>DRIVER AIDS</b>	
Cruise control (adaptive)	•
Eco Assist system (speedometer display)	•
ECON Mode	•
EV Driving Mode	•
Multi Information Display (MID)	
- odometer	•
- trip meter (A/B)	•
- instant/average fuel economy	•
- average fuel economy records (last 3 drives)	•
- range	•
- average speed	•
- elapsed time	•
- outside temperature display	•
- Power Flow Monitor	•
- Eco Drive Display	•
Steering wheel-mounted audio, Bluetooth®, cruise, LKAS, MID and i-MID controls	•
<b>COMFORT AND CONVENIENCE</b>	
Accessory power outlet (12v)	•
Active Noise Control (ANC)	•
Air conditioning	
- rear ventilation ducts	•
- i-dual-zone climate control	•
Ashtray and cigarette lighter	•
Foot-operated park brake	•
Head restraints (x5)	•
Interior lighting	
- glovebox	•
- map lights (x2)	•
- rear seat reading lights (x2)	•
- luggage area light	•
One touch lane change indicator	•
Power windows with:	
- one touch auto up/down function	•
- with remote key fob operation (open and close)	•
Seatbelt height adjuster - front	•
Smart keyless entry and push button start	•
Steering column adjustment - tilt and telescopic	•
Sunshades - rear window (electric)	•
Sunvisor vanity mirror	
- illuminated (driver and front passenger)	•
<b>SEATING</b>	
Seat trim	
- leather-appointed^	•
Seats (front)	
- fully reclining	•
- heatable	•
- 8-way power driver seat adjustment	•
- 2-way power driver lumbar support	•
- driver seat memory system - 2-position memory	•
- 8-way power passenger seat adjustment	•
Seats (rear)	
- centre fold down armrest with 2 cup holders	•
<b>STORAGE</b>	
Luggage hook	•
Centre console box	•
Coat hanger	•
Beverage holders (x6)	•
Door pockets	•
Glovebox (lockable and with dampener)	•
Seat back pocket (driver and front passenger)	•
Sunglass holder	•
Sunvisor ticket holder (driver-side only)	•
<b>INTERIOR STYLING</b>	
Leather-wrapped gear shift knob and steering wheel	•
Wood-grain look interior finishes	•
<b>MULTIMEDIA</b>	
Colour touch screen audio display - 5.8-inch	•
Intelligent Multi Information Display (i-MID) - 8-inch	•
- audio display	•
- Bluetooth® phone display*	•
- trip computer	•
- clock	•
- customisable wallpaper	•
Built-in satellite navigation with SUNA live traffic updates†	•
Bluetooth® phone and audio streaming*	•
AM/FM radio	•
CD player, single disc (MP3/WMA compatible)	•
360-watt premium audio system with:	
- 6 speakers and subwoofer	•
Speed-sensitive Volume Compensation (SVC)	•
USB port	•
Auxiliary jack	•

# Accord Sport Hybrid Specifications

Description	Sport Hybrid
<b>ACTIVE SAFETY</b>	
Advanced Driver Assist System (ADAS)# featuring:	
- Adaptive Cruise Control (ACC)	•
- Collision Mitigation Braking System (CMBS)	•
- Lane Keep Assist System (LKAS)	•
Anti-lock Braking System (ABS)	•
Auto-dimming rearview mirror	•
Brake Assist (BA) and Electronic Brake-force Distribution (EBD)	•
Emergency Stop Signal (ESS)	•
Hill Start Assist (HSA)	•
LaneWatch blind spot monitoring - i-MID display	•
Acoustic Vehicle Alerting System (AVAS)	•
Vehicle Stability Assist (VSA) with Traction Control System (TCS)	•
<b>PASSIVE SAFETY</b>	
Advanced Compatibility Engineering (ACE) structure	•
<b>Airbags SRS</b>	
- i-SRS dual stage inflation - driver	•
- front - driver and front passenger	•
- side (with SmartVent on passenger side)	•
- curtain - full length	•
<b>Child safety seat anchorages</b>	
- ISO fix (x2)	•
- top tether (x3)	•
Child-proof rear door locks	•
Honda G-force Control (G-Con) technology	•
Progressive crumple zones (front and rear)	•
Seatbelt pretensioner (driver and front passenger)	•
Seatbelt reminder (driver and all passengers)	•
<b>Seatbelts (3 points)</b>	
- Emergency Locking Retractors (ELR) - front and rear	•
- Automatic Locking Retractors (ALR) - (rear)	•
Side impact protection	•

Whiplash mitigating front seats	•
<b>PARKING AIDS</b>	
Multi-angle reversing camera - i-MID display	•
Parking sensors - front and rear	•
<b>SECURITY</b>	
Engine immobiliser	•
Security alarm system	•
<b>DIMENSIONS</b>	
Overall length (mm)	4870
Overall width (mm)	1850
Overall height (mm)	1470
Wheelbase (mm)	2775
Track (mm) - front/rear	1585/1585
Ground clearance - unladen (mm)	145
Minimum turning radius at wheel centre (metres)	5.9
<b>WEIGHTS AND CAPACITIES</b>	
Boot capacity (litres in VDA standard)	415 (381+34 under floor)
Fuel tank capacity (litres)	60
Tare mass (kg)	1642
Seating capacity	5
<b>WHEELS AND TYRES</b>	
Wheel size	18 x 8J
Tyre size	235/45 R18 98W
Wheel type	Alloy (two-tone)
<b>Spare wheel type</b>	
- tyre repair kit	•

• Standard feature \*The consumption figures quoted are based on ADR81/02 test results. °The Bluetooth word mark is owned by Bluetooth SIG, Inc. and use of such mark by Honda is under licence. Compatibility and functionality will vary depending on the device. ^Leather seat trim includes non-leather material on selected, high-impact surfaces. †SUNA is a registered trademark of Intellematics Pty. Ltd. Coverage includes Melbourne, Sydney, Brisbane, Gold Coast, Adelaide, Perth and Canberra metropolitan areas. Refer to [www.sunatraffic.com.au](http://www.sunatraffic.com.au) for full details. #ADAS technologies should not be used in place of safe driving practices. Drivers should continue to monitor the road ahead at all times.



**HONDA**  
The Power of Dreams

Honda Australia Pty. Ltd. ACN 004 759 611 ABN 66 004 759 611  
95 Sharps Road, Tullamarine, Victoria, 3043. Freecall 1800 804 954 [honda.com.au/cars](http://honda.com.au/cars)



[facebook.com/HondaAustraliaCars](https://facebook.com/HondaAustraliaCars)

[twitter.com/Honda\\_Australia](https://twitter.com/Honda_Australia)

[youtube.com/HondaAustralia](https://youtube.com/HondaAustralia)

[pinterest.com/HondaCars](https://pinterest.com/HondaCars)

[instagram.com/Honda\\_Australia](https://instagram.com/Honda_Australia)

The specifications and major features listed herein are accurate as at the date of printing (June 2015/15YM). However, Honda Australia Pty. Ltd. reserves the right to change or modify specifications and major features at any time without prior notice. Due to ordering, shipping and freight factors, some colour, model, option and accessory availabilities may vary from time to time. Check with your Honda Dealer for current information. The fuel consumption figures quoted in this brochure are based on ADR81/02 test results. You may experience different results depending on driving conditions and the condition of the vehicle. Honda warranties apply where due care is exercised by the owner and the vehicle is maintained in accordance with the vehicle's owners manual. Please refer to Honda's warranty documentation for exclusions and conditions. Honda Australia Pty. Ltd. recommends careful examination of all official Honda warranty documentation before purchasing. This brochure is printed on HannoArt, a paper that is certified carbon neutral by the Carbon Reduction Institute (CRI) from seedling to printer. Made with Totally Chlorine Free (TCF) pulp which has been sourced from managed plantation forests. HannoArt is manufactured under the world's best practice ISO 14001 Environmental Management System. The pulp used is Process Chlorine Free and is manufactured by an ISO 14001 certified mill. Accord Sport Hybrid shown in White Orchid Pearlescent on cover. HOD0892