



JAZZ



CR-Z



INSIGHT



CITY



CIVIC HATCH



CIVIC SEDAN



ACCORD EURO



ACCORD



CR-V



ODYSSEY

The Power of Clever Thinking

Accord EURO



HONDA
The Power of Dreams



Honda Australia Pty. Ltd.

ACN 004 759 611 ABN 66 004 759 611

95 Sharps Road, Tullamarine, Victoria, 3043. Freecall 1800 804 954 honda.com.au/cars

facebook.com/HondaAustraliaCars twitter.com/Honda_Australia youtube.com/HondaAustralia pinterest.com/HondaCars

The specifications and major features listed herein are accurate as at the date of printing (October 2013/14YM). However, Honda Australia Pty. Ltd. reserves the right to change or modify specifications and major features at any time without prior notice. Due to ordering, shipping and freight factors, some colour, model, option and accessory availabilities may vary from time to time. Check with your Honda Dealer for current information. Only Genuine Honda Accessories are made to fit Honda vehicles. The fuel consumption figures quoted in this brochure are based on ADR81/02 test results. You may experience different results depending on driving conditions and the condition of the vehicle. Honda warranties apply where due care is exercised by the owner and the vehicle is maintained in accordance with the vehicle's owner's manual. Please refer to Honda's warranty documentation for exclusions and conditions. Honda Australia Pty. Ltd. recommends careful examination of all official Honda warranty documentation before purchasing. This brochure is printed on HannoArt, a paper that is certified carbon neutral by the Carbon Reduction Institute (CRI) from seedling to printer. Made with Totally Chlorine Free (TCF) pulp which has been sourced from managed plantation forests. HannoArt is manufactured under the world's best practice ISO 14001 Environmental Management System. The pulp used is Process Chlorine Free and is manufactured by an ISO 14001 certified mill. Euro Luxury Navigation shown in Graphite Lustre Metallic on cover. HOD0126

The Honda Accord Euro.

Crafted with precision engineering –
so from the moment you turn the
key, you feel connected to the drive.

That's the power of clever thinking.



Everything about the Accord Euro just feels right.

Take for example its sleek exterior. The distinctively powerful look of the curved grille sets the tone for everything else to come. Strong, modern lines flow from the aerodynamic front to the bold rounded rear, creating an aggressive but stylish stance.

Inside, luxury surrounds you, with every detail immaculately designed. Premium finishes. Contoured seats. Ergonomic layout, comfort and practicality are all perfectly executed to work harmoniously together.

As soon as your hands grip the wheel, you'll experience the

clever thinking responsible for the Accord Euro's impressive handling. The precision-control starts with the 2.4L i-VTEC engine's performance, combining power and efficiency in a true testament to Honda ingenuity.

The Accord Euro also comes with the highest safety standards possible, resulting in a 5-star ANCAP safety rating, so you'll always feel safe behind the wheel.

From the modern look of the front, to the dual exhausts at the back, the Accord Euro's precision engineering equates to so much more than just a finely crafted engine.





POWERFUL AND SPORTY WITH A HEART OF PURE CLASS.

Simply glancing at the Accord Euro doesn't do it justice; there are too many fine details, features and contours – all meticulously designed and crafted to stylish perfection. The result is a sports sedan that's truly worthy of a closer look.

It starts with a distinctive V-shaped grille and aerodynamic bonnet curves. Your eyes are then naturally drawn down the body of the Accord Euro. The large sloped windows, sleek profile, bold wheel arches and polished alloys, all come together seamlessly to make one irresistibly refined vehicle.

At the rear, Honda engineers have continued the prestige feel of the Accord Euro with sophisticated tail lights and dual chrome exhausts adding class to the athletic, rounded shape. Touches of chrome extend through the body of the car, highlighting the Accord Euro's features along the way.

The Accord Euro doesn't need to boast – one look and you'll be hooked – leaving you no choice but to admire power and sporty styling all delivered in one faultless package.



Every aspect
cleverly designed
to fit you perfectly.

How often in life do you truly feel like it's all about you? Like everything around you was made with just you in mind. It's a feeling that's all-pervasive behind the wheel of the Honda Accord Euro.

Take the cabin's layout – it literally envelops you, cock-pit style so that you'll never need to shift your attention from the road to adjust a dial or skip a song. It's more than just convenient; it's clever.

The interior is unapologetically sporty, modern and luxurious. It boasts tactile elements like a leather-wrapped steering wheel and seats that are finished with a blend of the best upholstery materials, including fine grain leather.¹ Large, supportive bolsters in the front seats reduce the transmission of any vibration and their sporty shape hugs

the driver – reminding you yet again, this is a car that's all about you.

A modern instrument panel with blue and red back-lighting and 'floating' needles further underlines the sporty feel of the car and sets the tone for the rest of the interior.

And to really make you feel at home, Honda's engineers have made the features as intuitive as possible. Like steering wheel-mounted controls that let you answer your calls hands-free and allow you to select your favourite iPod[#] and MP3 tracks without your eyes needing to leave the road.

It's a combination of comfort and intuitive function that makes you feel truly looked after, and ready to take on just about anything.

¹Luxury and Luxury Navigation models only. Leather trim includes some non-leather material on selected, high impact areas.
[#]iPod is a trademark of Apple Inc. iPod is integrated through a vehicle's audio system display and controls for iPods from 5th generation onwards and all iPod Nanos. Older iPod models will only operate through the audio system when controlled by the iPod device itself, and firmware updates (if available) may be required to achieve compatibility with the vehicle's audio system display and steering wheel-mounted audio controls (where applicable). Please refer to your iPod User Guide for information on iPod firmware updates.

Features.

Every single item inside the Accord Euro was developed with the driver in mind. Whether you're behind the wheel or enjoying the luxury of the passenger seat, the Accord Euro's ergonomic design, leather detailing and countless other features make for a drive you'll always look forward to. That's the difference attention-to-detail makes in the Accord Euro.



Key fob

The key fob has the added convenience of allowing remote open and close of the windows and sunroof (if equipped), providing an easy solution to the 'window still open' problem.



Rain-sensing wipers

For greater convenience in wet weather, a rain sensor detects water on the windshield and automatically activates the wipers at just the right speed.



Advanced lighting technology

All models feature dusk-sensing headlights as standard. The Luxury grade also offers auto-levelling HID headlights and washers while the Luxury Navigation model takes things up a notch with powerful Bi-Xenon technology to illuminate even more of the road ahead.



LCD Multi Information Display (MID)

The very clever MID gives you up-to-the-second data, including current and average fuel economy, elapsed time and distance to empty, all immaculately presented on the crystal clear LCD screen.



Leather-wrapped steering wheel

All models feature a sporty three-spoke leather-wrapped steering wheel for precise control and a comfortable grip. And with tilt and telescopic adjustment you'll always find your ideal driving position.



Steering wheel-mounted controls

Controls on the steering wheel mean your eyes can stay fixed on the road, while your hands are in charge of answering calls, cruise control and music.



Reverse tilt side mirror[~]

When in reverse, the passenger side wing-mirror automatically tilts down, bringing more of the kerb into view, and making parallel parking that little bit easier overall.



Auto-dimming rear-view mirror¹

An electrochromatic rear-view mirror improves visibility and safety by automatically dimming during night-time driving to reduce glare from the headlights of vehicles behind.



Electric sunroof¹

The Accord Euro's electric, glass sunroof allows both tilt and slide functionality, whilst a floating liner lets you adjust how much light to let into the cabin.



Premium audio system

Listen to your music in perfect clarity with the Accord Euro's 10-speaker audio system including AM/FM tuner, 6-disc CD player, USB port and auxiliary input.



Multi-jog dial

Positioned on the centre console, the rotating multi-jog dial gives you smooth command of essential functions including audio, and (where fitted) satellite navigation.



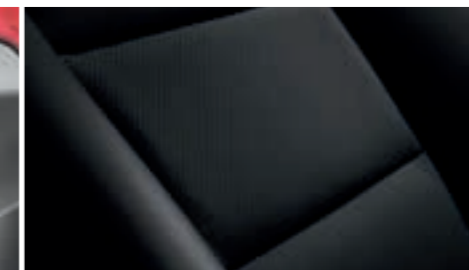
Bluetooth[®] phone system[°]

Using intuitively designed steering wheel-mounted controls, make and take calls via the Bluetooth[®] hands-free phone system[°].



Rear park assist¹

Parking's always easy thanks to front and rear parking sensors on the Luxury model and above.



Leather appointed[^] seat trim¹

Select models¹ come with finely stitched, leather-appointed[^] seating, further increasing the already impressive, premium feel of the Accord Euro.



Heated front seats¹

On cold mornings, you'll be kept warm thanks to the two-stage heated front seats in the Luxury and Luxury Navigation models.



MP3 connectivity

Connecting your iPod[®] or other compatible MP3 device is simple in the Accord Euro, and the steering wheel-mounted controls make browsing and selecting music just as easy.



Dual-zone climate control

Dual-zone climate control allows you and your front passenger to independently adjust the temperature, while rear vents keep those in the back comfortable. And Luxury Navigation models are equipped with GPS-linked solar sensors which determine the sun's position and automatically adjust cabin temperature to suit.



Clever storage

In the Accord Euro, everything has been thought of, right down to the clever foldaway storage for your sunglasses overhead and the very handy climate-controlled glovebox and centre console.



Power-adjustable front seats¹

Select models feature 8-way power-adjustable front seats and a Driver Position Memory System that allows you to store the seating preference for two different drivers. Each key fob is linked to a preferred position, so your seat will be ready for you as soon as you unlock the door.



Satellite navigation²

Honda's satellite navigation system can guide you – turn by turn – to virtually anywhere in Australia. The fully integrated system continually calculates your location and the shortest, fastest route to your destination and guides you both verbally and visually every step of the way.



Reversing camera²

A camera located discretely above the rear licence plate provides a direct visual feed of the view behind your Accord Euro, ensuring even greater safety and ease when parking.

¹Luxury and Luxury Navigation models only. ²Luxury Navigation model only. [°]The Bluetooth word mark is owned by the Bluetooth SIG, Inc. and use of such mark by Honda is under licence. Please check the list of compatible phones at honda.com.au/Bluetooth #iPod is a trademark of Apple Inc. iPod is integrated through a vehicle's audio system display and controls for iPods from 5th generation onwards and all iPod Nanos. Older iPod models will only operate through the audio system when controlled by the iPod device itself, and firmware updates (if available) may be required to achieve compatibility with the vehicle's audio system display and steering wheel-mounted audio controls (where applicable). Please refer to your iPod User Guide for information on iPod firmware updates. [~]Available on automatic transmission only. [^]Leather trim includes some non-leather material on selected, high impact areas.

Looks you'll admire and an engine you'll covet.



If you're after power, control and efficiency, then you'll find what's under the bonnet of the Accord Euro a true sight to behold. This is where the term 'precision engineering' has truly been perfected.

Engine

What you may not notice when driving the Accord Euro is that Honda's famous i-VTEC engine balances power and efficiency as if it were actually two engines in one.

Via a clever cam widget, the 2.4L i-VTEC engine is able to recognise throttle position and engine speed and regulate fuel use accordingly. So it uses less fuel when the engine revs are low but delivers high performance when you put your foot down.

The result is 148kW of power, while using just 8.5L/100km*.



Transmission

The choice of a quick-shifting 6-speed manual or smooth 5-speed automatic transmission with manual shift mode means whatever your preferred driving style, there's an Accord Euro for you. Steering wheel-mounted paddle shifts allow for precise gear changes whilst a kick-down function provides an additional burst of power when overtaking or exiting corners.

The automatic transmission also features Honda's unique Grade Logic Control that holds the optimum gear when tackling undulating terrain, ensuring a constantly even drive.

Handling

It's the Accord Euro's sharp direct steering that demands respect and gives the Accord Euro its sporty dynamics. This, combined with refined aerodynamics, ensures minimal drag and effortless efficiency.

The Accord Euro ensures an intimate feel for the road while still enjoying a smooth, comfortable ride via a couple of clever touches. A low centre of gravity, wide track and double wishbone suspension equal super-sensitive agility and stability, gripping the road even at high speeds.

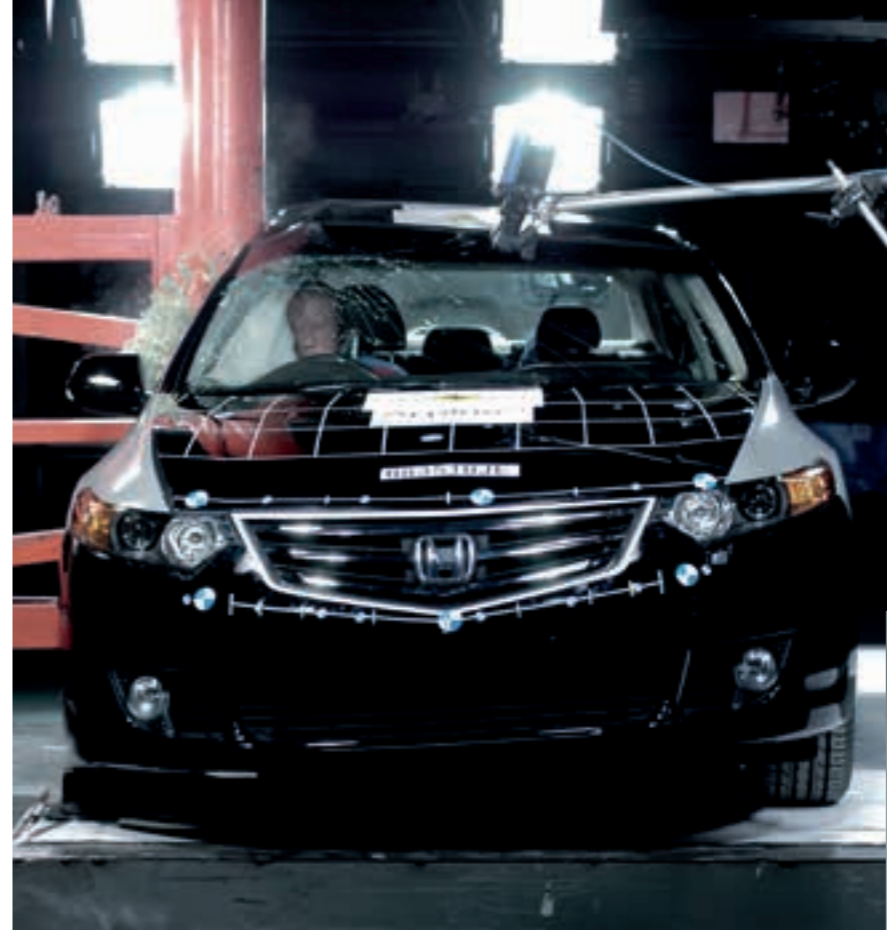
The Accord Euro is a car that needs to be driven to be believed. A testament to Honda design, clever thinking and that famous precision engineering.

*The fuel consumption figure is based on ADR81/02 combined test results for Euro automatic.



Euro shown in Cobalt Blue Pearlescent.

HONDA IS COMMITTED TO DESIGNING EVERY MODEL WITH EXCEPTIONAL SAFETY FEATURES.



We even built the world's largest omni-directional crash facility to test our cars from multiple angles with real-world impact scenarios.

Plus the Accord Euro has been awarded a 5-star ANCAP rating, meaning you can rest assured that you're in the safest of hands behind the wheel.

ABS, EBD and Brake Assist

When emergency braking is detected, Brake Assist (BA) applies maximum braking pressure, activating the Anti-lock Braking System (ABS). ABS helps stop the wheels locking under heavy braking, allowing you to maintain steering control whilst Electronic Brake-force Distribution (EBD) works to maintain ideal brake balance.

Airbags

The clever Honda SRS driver airbag system inflates at different rates depending on crash severity, seatbelt usage and a host of other factors to keep you safe behind the wheel. Dual front, side and full-length curtain airbags are standard.

Front seatbelt pretensioners and load limiters.

Should an accident be unavoidable, the same sensors that deploy the airbags will automatically tension the front seatbelts to help hold you securely in place. Load limiters help minimise the force of the seatbelt against your body, to further reduce the risk of injury.

Front active head restraints.

The front seats of the Accord Euro come further equipped with front active head restraints, so if the vehicle is struck from behind, the headrest automatically shifts upward and forward to reduce the risk of whiplash.

G-force Control (G-Con) technology

Developed at Honda's omni-directional crash test facility, the body of the Accord Euro is engineered using Honda's world renowned G-Con technology. In the unlikely event of an accident, G-Con creates a protective cage around you and your passengers while collapsible body sections absorb the impact to help prevent it from reaching the cabin.

Advanced Compatibility Engineering (ACE) body structure

The Accord Euro has an innovative body structure, engineered to absorb and deflect the force of a frontal collision away from the passenger compartment, improving the safety of every occupant.

Pedestrian protection

Research has proven that sophisticated protection features – like windscreen wiper pivots that break away on impact and energy-absorbing front guard mounts – dramatically improve a pedestrian's chance of survival if struck. So naturally they come standard on the Accord Euro.

Vehicle Stability Assist (VSA) with Traction Control

This technology helps keep the Accord Euro on course in adverse driving conditions by detecting, then mitigating, potential understeer or oversteer. When necessary, VSA automatically reduces engine power and manages brake pressure to individual wheels to help regain control.

Motion Adaptive Electric Power Steering

When VSA is activated, Motion Adaptive Electric Power Steering automatically adjusts steering pressure, making it easier to steer in the stabilising direction.

Trailer Stability Assist (TSA)

When towing, Trailer Stability Assist (TSA) monitors trailer movement relative to the Accord Euro itself. If too much difference is detected, such as during crosswinds, it adjusts engine torque and applies precisely the right amount of braking to the relevant wheels, stabilising both the Accord Euro and the trailer.

High-beam Support System (HSS)¹

The High-beam Support System detects the headlights of other road users, and automatically switches between high and low beams as required, letting you concentrate on the road conditions ahead.

Active Cornering Lights (ACL)¹

The headlights of select models feature side lamps that illuminate corners when turning for better vision. As soon as you indicate or turn the wheel more than 90 degrees, the appropriate lamp will automatically activate, helping bring to light any potential hazards sooner.

¹Euro Luxury Navigation models only.

Select your
model and colour.



Euro

The Accord Euro comes standard with:

- 2.4 litre DOHC i-VTEC 4-cylinder engine
- 6-speed manual transmission
- 5-speed automatic transmission with paddle shift
- Cruise control
- 17-inch alloy wheels with full size alloy spare
- Dual exhaust
- Chrome door handles
- Mirror-mounted turn indicators
- Electrically adjustable and heated door mirrors
- Reverse tilt passenger side mirror*
- Keyless entry with remote boot release
- Halogen headlights with manual beam height adjustment
- Dusk-sensing automatic headlights
- Rain-sensing automatic front wipers
- Fabric seat and interior trim
- Driver seat lumbar support
- Leather-wrapped steering wheel
- Rear seat centre armrest with 2 cup holders
- Sunglass holder
- 60/40 split fold rear seats
- Tilt and telescopic adjustable steering wheel
- LCD Multi Information Display (MID)
- Power windows with auto up/down and key fob operation
- Dual-zone climate control with rear ventilation
- Climate-controlled glovebox and centre console
- Bluetooth® phone connectivity*
- Ten speakers (including subwoofer)
- AM/FM radio with MP3/WMA compatible 6-disc CD player
- Auxiliary jack and USB connectivity

- 5-star ANCAP safety rating
- Anti-lock Braking System (ABS)
- Electronic Brake-force Distribution (EBD)
- Vehicle Stability Assist (VSA) with Traction Control
- Motion Adaptive Electric Power Steering (MAEPS)
- Trailer Stability Assist (TSA)
- Honda G-force Control (G-Con) technology
- Advanced Compatibility Engineering (ACE) structure
- SRS airbags: dual front, side and full-length curtain
- Active front head restraints
- Security alarm and immobiliser



Euro Luxury

Additional features over the Euro:

- 18-inch alloy wheels
- Electric sunroof
- High Intensity Discharge (HID) headlights with automatic beam height adjustment
- Headlight washers
- Front fog lights
- Leather-appointed[†] seat and interior trim
- Leather-wrapped gear shift knob
- Heated front seats
- 8-way power adjustable front seats
- Driver seat two-position memory function
- Front and rear parking sensors
- Auto-dimming rear view mirror
- Temporary spare tyre



Euro Luxury Navigation

Additional features over the Euro Luxury:

- 5-speed automatic transmission only
- Active Cornering Lights (ACL)
- HID Bi-Xenon headlights with automatic beam height adjustment
- High-beam Support System (HSS)
- Satellite navigation system
- Reversing camera
- i-Dual-zone climate control (GPS-linked)

Crystal Black Pearlescent[†]

White Orchid Pearlescent[†]

Modern Steel Metallic[†]

Cobalt Blue Pearlescent[†]

Milano Red

Graphite Lustre Metallic[†]

Alabaster Silver Metallic[†]



Accord Euro models shown in Alabaster Silver Metallic.
[>]Automatic transmission only.
[®]The Bluetooth word mark is owned by the Bluetooth SIG, Inc. and use of such mark by Honda is under licence. Please check the list of compatible phones at honda.com.au/Bluetooth
[†]Leather trim includes some non-leather material on selected, high impact areas.
[†]Metallic and Pearlescent paint additional cost.

AS IT TURNS OUT, YOU CAN IMPROVE ON PERFECTION. SO IF YOU'RE LOOKING TO MAKE YOUR SLEEK ACCORD EURO THAT LITTLE BIT MORE YOU, TAKE A LOOK AT THE RANGE OF MODULO ACCESSORIES.

Modulo Sports Pack.

Choose the complete set or your own unique combination:

- Front aero bumper[^] and Sports grille[†]
- Rear boot spoiler – wing
- Rear aero bumper[^]
- Front fog lights^{*}
- Side skirt set[#]
- 18-inch 'Delta' alloy wheels^{**}



◀ Accord Euro shown in Graphite Lustre Metallic fitted with Modulo Sports Pack.

Honda's Modulo Accessories will make your Accord Euro sleeker, sportier, edgier and even more aerodynamic.

See your Honda Dealer for advice regarding Genuine Honda Accessories. Pictured accessories are all sold separately. All Genuine Honda Accessories installed at the time of retail sale of a new motor vehicle are covered by Honda's 3-year/100,000km warranty. If installed after retail sale, they are covered for the remainder of the warranty or a minimum of 12 months – whichever is greater – provided that the accessory is fitted only to the vehicle for which it was intended by Honda Motor Co.
[^]Aero bumpers not compatible with Corner styling guards. ^{*}Accessory Front fog lights are mandatory when Front aero bumper is fitted to Base model. [†]Sports grille is a mandatory component of the Front aero bumper. Cannot be sold separately. [#]Side skirt set not compatible with Mud guard set. ^{**}Applicable to Base model only. ^{*}18-inch tyres sold separately. Consult your Honda Dealer.

AS FOR THOSE EXTRA FINISHING TOUCHES? FROM FRONT TO BACK, INSIDE AND OUT, HONDA'S RANGE OF STYLISH ADD-ONS WILL HAVE YOUR ACCORD EURO LOOKING AS LUXURIOUS AS YOU DESIRE.



- Left to right, top to bottom:
- Rear spoiler – ducktail
 - Leather-wrapped sports steering wheel
 - Woodgrain-look gear shift knob[^] with leather boot
 - Metal-look gear shift knob[^] with leather boot
 - Leather gear shift knob^{*}
 - Sports pedal set
 - Accent light set – front and rear



◄ Accord Euro Base model shown in Graphite Lustre Metallic fitted with 17-inch 'Quartz' alloy wheels[‡], Front fog lights[‡], Corner styling guards, Door styling guards and Rear ducktail spoiler.

See your Honda Dealer for advice regarding Genuine Honda Accessories. Pictured accessories are all sold separately. All Genuine Honda Accessories installed at the time of retail sale of a new motor vehicle are covered by Honda's 3-year/100,000km warranty. If installed after retail sale, they are covered for the remainder of the warranty or a minimum of 12 months – whichever is greater – provided that the accessory is fitted only to the vehicle for which it was intended by Honda Motor Co.
[^]Applicable to manual transmission only. Requires the fitment of the accessory Leather boot (sold separately). ^{*}Applicable to Luxury and Luxury Navigation models only. [>]Applicable to automatic transmission only. [‡]Applicable to Base model only.

For more information, contact your local Dealer or visit honda.com.au/accordeuro



Front corner styling guards[^]



Rear corner styling guards[^]



Door styling guards.



Mud guard set.[†]



Luggage area protector tray.



Bootlip protector.[†]



Cargo net.[†]



Organiser box.



Rear park assist (Base model only).



Door sill garnish set.



Deluxe tailored mat set.



Roof rack set. 50kg load capacity.*



Roof box. 36kg load capacity.



Bike attachment.



Surfboard attachment.



Kayak attachment.

PRACTICAL ADDITIONS, BEAUTIFULLY DESIGNED.

The Accord Euro has a host of Genuine Honda Accessories serving to both enhance and preserve its looks. And being genuine, you know they'll fit perfectly and perform flawlessly. For more information, contact your local Dealer or visit honda.com.au/accordeuro

Other accessories include:

- Auto-dimming rear-view mirror
- Bonnet protector
- Cargo hook
- Door handle protection film
- Door visor set
- Headlight protector set
- Leather maintenance kit
- Steering wheel garnish
- Storage pocket
- Tongue and towball storage bag
- Touch-up paint
- Tow bar kit
- Wheel lock nut set

See your Honda Dealer for advice regarding Genuine Honda Accessories. Pictured accessories are all sold separately. All Genuine Honda Accessories installed at the time of retail sale of a new motor vehicle are covered by Honda's 3-year/100,000km warranty. If installed after retail sale, they are covered for the remainder of the warranty or a minimum of 12 months – whichever is greater – provided that the accessory is fitted only to the vehicle for which it was intended by Honda Motor Co. [^]Corner styling guards not compatible with Aero bumpers. [†]Mud guard set is not compatible with Side skirt set or Rear aero bumper. [‡]Civic model shown for illustrative purposes. ^{*}In the interest of aerodynamics, Honda recommends the Roof rack set be removed when not in use.

Accord Euro Specifications

Description	Euro	Euro Luxury	Euro Luxury Navigation
ENGINE			
Engine type	Inline 4 cylinder DOHC i-VTEC	Inline 4 cylinder DOHC i-VTEC	Inline 4 cylinder DOHC i-VTEC
Capacity	2.4 litre – 2354cc	2.4 litre – 2354cc	2.4 litre – 2354cc
Compression ratio	11.0	11.0	11.0
Bore x Stroke (mm)	87 x 99.0	87 x 99.0	87 x 99.0
Fuel type (minimum recommended)	Unleaded (RON 95)	Unleaded (RON 95)	Unleaded (RON 95)
Fuel supply system	Honda Programmed Fuel Injection (PGM-FI)	Honda Programmed Fuel Injection (PGM-FI)	Honda Programmed Fuel Injection (PGM-FI)
Drive By Wire throttle (DBW)	✓	✓	✓
TRANSMISSION			
Manual transmission	6-speed	6-speed	–
Automatic transmission	5-speed with Grade Logic Control	5-speed with Grade Logic Control	5-speed with Grade Logic Control
– with paddle shift	✓	✓	✓
– with transmission shift lock	✓	✓	✓
PERFORMANCE AND ECONOMY			
Maximum power	148kW @ 7000rpm	148kW @ 7000rpm	148kW @ 7000rpm
Maximum torque	– manual 234Nm @ 4300-4400rpm – automatic 230Nm @ 4200-4400rpm	– manual 234Nm @ 4300-4400rpm – automatic 230Nm @ 4200-4400rpm	– manual 234Nm @ 4300-4400rpm – automatic 230Nm @ 4200-4400rpm
Fuel consumption – combined (litres/100km)*	– manual 8.7 – automatic 8.5	– manual 8.7 – automatic 8.5	– manual 8.7 – automatic 8.5
Fuel consumption – urban (litres/100km)*	– manual 11.7 – automatic 11.9	– manual 11.7 – automatic 11.9	– manual 11.7 – automatic 11.9
Fuel consumption – extra urban (litres/100km)*	– manual 7.0 – automatic 6.5	– manual 7.0 – automatic 6.5	– manual 7.0 – automatic 6.5
CO2 emissions – combined (g/km)*	– manual 207 – automatic 202	– manual 207 – automatic 202	– manual 207 – automatic 202
Emission standard	Euro 4	Euro 4	Euro 4
CHASSIS			
Body type	Monocoque	Monocoque	Monocoque
Suspension	– front and rear Independent Double Wishbone	– front and rear Independent Double Wishbone	– front and rear Independent Double Wishbone
Stabiliser bars	Front and rear	Front and rear	Front and rear
Power steering	Motion Adaptive Electric	Motion Adaptive Electric	Motion Adaptive Electric
Brakes	– front Ventilated disc	– front Ventilated disc	– front Ventilated disc
Rear brakes	– rear Solid disc	– rear Solid disc	– rear Solid disc
EXTERIOR			
Antenna	In-glass	In-glass	In-glass
Door handles	– chrome ✓	– chrome ✓	– chrome ✓
Electric sunroof	– – with remote key fob operation ✓	– Open and close ✓	– Open and close ✓
Electrically adjustable door mirrors	– heated – with turn indicators – with reverse tilt-down function ✓	– heated – with turn indicators – with reverse tilt-down function ✓	– heated – with turn indicators – with reverse tilt-down function ✓
Exhaust	– chrome Passenger side Twin	– chrome Passenger side Twin	– chrome Passenger side Twin
Front wipers	Rain-sensing (auto)	Rain-sensing (auto)	Rain-sensing (auto)
Rear window demister	✓	✓	✓
EXTERIOR LIGHTS			
Front fog lights	■	✓	✓
Headlights	– type Halogen – dusk-sensing auto on/off – with headlight washer – adjustable headlight beam – Active Cornering Lights (ACL) – High-beam Support System (HSS)	– type HID – dusk-sensing auto on/off – with headlight washer – Auto-levelling – –	– type HID Bi-Xenon – dusk-sensing auto on/off – with headlight washer – Auto-levelling – –
DRIVER AIDS			
Cruise control	✓	✓	✓
Multi Information Display (MID)	✓	✓	✓
– odometer	✓	✓	✓
– trip meter (A/B)	✓	✓	✓
– instant/average fuel economy	✓	✓	✓
– range	✓	✓	✓
– average speed	✓	✓	✓
– elapsed time	✓	✓	✓
– outside temperature	✓	✓	✓
– rear seatbelt usage	✓	✓	✓
– speed alarm	✓	✓	✓
Steering wheel-mounted audio and Bluetooth® controls*	✓	✓	✓
Tachometer	✓	✓	✓
COMFORT AND CONVENIENCE			
Accessory power outlet (12v)	✓	✓	✓
Air conditioning	– with rear ventilation ducts Dual-zone climate control ✓	– with rear ventilation ducts Dual-zone climate control ✓	– with rear ventilation ducts i-Dual-zone climate control (GPS-linked) ✓
Central locking	✓	✓	✓
Cigarette lighter and ash tray	✓	✓	✓
Digital clock	✓	✓	✓
Dust and pollen filter	✓	✓	✓
Driver's footrest	✓	✓	✓
Head restraints	– adjustable 5	– adjustable 5	– adjustable 5
Interior lighting	– glovebox light – map lights – ceiling light – courtesy door light – luggage area light – vanity mirror light	– glovebox light – map lights – ceiling light – courtesy door light – luggage area light – vanity mirror light	– glovebox light – map lights – ceiling light – courtesy door light – luggage area light – vanity mirror light
Remote keyless entry (with boot release)	✓	✓	✓
Power windows	– one touch auto up/down function – with remote key fob operation	– one touch auto up/down function – with remote key fob operation	– one touch auto up/down function – with remote key fob operation
Seatbelt height adjuster	Front	Front	Front
Steering column adjustment	Tilt and telescopic adjustment	Tilt and telescopic adjustment	Tilt and telescopic adjustment
Sunvisor vanity mirror	Driver and front passenger	Driver and front passenger	Driver and front passenger

Accord Euro Specifications

Description	Euro	Euro Luxury	Euro Luxury Navigation
SEATING			
Seat trim material	Fabric	Leather-appointed^	Leather-appointed^
Seats (front)	Fully reclining	Fully reclining	Fully reclining
– heating	–	✓	✓
– driver seat adjustment	Manual	8-way power adjustable	8-way power adjustable
– driver seat lumbar support	Manual	Manual	Manual
– driver seat two-position memory system	–	✓	✓
– passenger seat adjustment	Manual	8-way power adjustable	8-way power adjustable
Seats (rear)	60/40 split fold – centre fold down armrest With 2 cup holders	60/40 split fold – centre fold down armrest With 2 cup holders	60/40 split fold – centre fold down armrest With 2 cup holders
INTERIOR STYLING			
Steering wheel	Leather-wrapped	Leather-wrapped	Leather-wrapped
Gear shift knob	Urethane	Leather-wrapped	Leather-wrapped
MULTIMEDIA			
AM/FM radio with MP3/WMA compatible 6-disc CD player	✓	✓	✓
Anti-theft system	✓	✓	✓
Auxiliary jack	✓	✓	✓
Bluetooth® hands-free phone connectivity ^a	✓	✓	✓
Satellite navigation	–	–	✓
Speed-sensitive Volume Compensation (SVC)	✓	✓	✓
Ten Speakers (including subwoofer)	✓	✓	✓
USB connectivity	✓	✓	✓
STORAGE			
Cargo area restraint hooks	2	2	2
Centre pocket	✓	✓	–
Climate-controlled centre console box	✓	✓	✓
– with sliding front seat armrest	✓	✓	✓
Climate-controlled glovebox	Illuminated with key	Illuminated with key	Illuminated with key
Coat hook	2	2	2
Cup /bottle holders	4/5	4/5	4/5
Driver's pocket	✓	✓	✓
Fold-down rear seatback	✓	✓	✓
Door pockets	✓	✓	✓
Seat back pocket	Front passenger	Driver and front passenger	Driver and front passenger
Sunglass holder	✓	✓	✓
Sunvisor ticket holder (driver-side only)	✓	✓	✓
SAFETY RATING			
5-star ANCAP	✓	✓	✓
ACTIVE SAFETY			
Anti-lock Braking System (ABS)	✓	✓	✓
Auto-dimming rear-view mirror	–	✓	✓
Electronic Brake-force Distribution (EBD)	✓	✓	✓
Emergency Brake Assist (EBA)	✓	✓	✓
Trailer Stability Assist (TSA)	✓	✓	✓
Vehicle Stability Assist (VSA) with Traction Control System (TCS)	✓	✓	✓
PASSIVE SAFETY			
Advanced Compatibility Engineering (ACE) structure	✓	✓	✓
Airbags SRS	– front – side (with front passenger OPDS) – full length curtain	Driver and front passenger Driver and front passenger Front and rear	Driver and front passenger Driver and front passenger Front and rear
Child-proof rear door locks	✓	✓	✓
Child safety seat anchorages	3	3	3
Front active head restraints	✓	✓	✓
Hazard warning lights	✓	✓	✓
Honda G-force Control (G-Con) technology	✓	✓	✓
Progressive crumple zones	Front and rear	Front and rear	Front and rear
Seatbelt reminder	Driver and all passengers	Driver and all passengers	Driver and all passengers
Seatbelts	– 3 point Emergency Locking Retractors – 3 point Automatic Locking Retractors – Pretensioners/load limiters	Front and rear Rear Front belt and buckle	Front and rear Rear Front belt and buckle
Side impact protection	✓	✓	✓
Windscreen	Laminated	Laminated	Laminated
PARKING AIDS			
Parking sensors	– front – rear	– ■	– ✓
Reversing camera	–	–	✓
SECURITY			
Engine immobiliser system	✓	✓	✓
Security alarm system	✓	✓	✓
DIMENSIONS			
Overall length (mm)	4740	4740	4740
Overall width (mm)	1840	1840	1840
Overall height (mm)	1440	1440	1440
Wheelbase (mm)	2705	2705	2705
Track (mm)	– front – rear	1580 1580	1580 1580
Ground clearance (mm)	– non-load – full-load	150 110	150 110
Minimum turning radius at wheel centre (metres)	12.1	12.1	12.1
WEIGHTS AND CAPACITIES			
Boot capacity (litres)	467	467	467
Fuel tank capacity (litres)	65	65	65
Kerb weight (kg)	1525 (manual), 1555 (automatic)	1570 (manual), 1605 (automatic)	1605 (automatic)
Maximum towing capacity (kg)	– trailer with/without brakes – down force/tongue load	1200/500 60	1200/500 60
Seating capacity	5	5	5
WHEELS AND TYRES			
Wheel size	17 x 7.5 J ■ 18 x 7.5 J ^P	18 x 8.0 J –	18 x 8.0 J –
Tyre size	225/50R17 98V	235/45R18 98W	235/45R18 98W
Wheel type	Alloy	Alloy	Alloy
Spare wheel type	Full size	Temporary	Temporary

✓Standard feature. ■ Accessory option. – Not available. *The figures quoted in this brochure are based on ADR81/02 combined test results. You may experience different results depending on driving conditions and the condition of the vehicle. ~Available on automatic transmission only. ^aThe Bluetooth word mark is owned by the Bluetooth SIG, Inc. and use of such mark by Honda is under licence. Please check the list of compatible phones at honda.com.au/Bluetooth ^Leather trim includes some non-leather material on selected, high impact areas. ^PTyres sold separately. Consult your Honda Dealer.

You're never alone in a Honda.

Buy an Accord Euro and you'll be amazed at how well you'll be looked after.

The care starts with a 3-year/100,000km warranty and 6-year rust perforation warranty.*

You'll also have access to HondaONE, an exclusive website that gives you up-to-date service history, vehicle records, maintenance tips and service reminders.

Plus Honda have a range of benefits that ensure your Accord Euro is as pleasurable to own as it is to drive.

Dedicated Honda Care

Servicing your Accord Euro at a local Honda Dealership will ensure you protect your investment and maximise its outstanding resale value. Dedicated Honda Care provides access to specialist diagnostic equipment and Honda Genuine Parts. There's also the advantage of factory-trained technicians with unparalleled knowledge of Honda products.

Honda Warranty Plus[†]

Purchase Honda Warranty Plus and your Accord Euro will be protected with no claim limits and no cost for labour and parts for 5 years or 140,000km (inclusive of New Vehicle Warranty). You'll also be entitled to 5-year Premium Roadside Assist. Visit honda.com.au/warranty for more information.

Honda Insurance[‡]

If you're looking for cover as reliable as your Accord Euro you really need Honda Motor Vehicle Insurance.

You'll enjoy a range of benefits, including:

- 3-year new replacement if your Honda is a total loss.
- Genuine Honda approved parts for the first 3 years.
- Lifetime guarantee on authorised repairs.

For more information visit honda.com.au/insurance

Honda Finance

Whether you're buying a Honda for yourself or a business, Honda have a wide range of flexible finance and leasing options. So see your Honda Dealer to find a financial solution that suits you as perfectly as your Accord Euro does. For more information visit honda.com.au/finance

Honda Merchandise

Show your true colours with genuine Honda merchandise. For everything from apparel to travel goods, visit your local Honda Dealer or view the range at honda.com.au/merchandise



For more information visit honda.com.au or Freecall 1800 804 954

*Honda warranties apply where due care is exercised by the owner and the vehicle is maintained in accordance with the Owner's Warranty and Service Manual. Please visit honda.com.au/warranty for full terms and conditions. [†]5-year/140,000km Warranty Plus is inclusive of 3-year/100,000km New Vehicle Warranty. Please refer to Honda's Warranty documentation for conditions at honda.com.au/warranty. [‡]Honda Insurance is underwritten by Allianz Australia Insurance Limited Licence No. 234 708, ABN 15 000 122 850 (Allianz). In arranging this insurance Honda Australia Pty Ltd ABN 66 004 759 611 and the authorised dealers act as agents of Allianz and not as your agent. In entering into a contract of insurance for this policy, you acknowledge that the Product Disclosure Statement (PDS), your Schedule and any other document which we tell you forms part of this policy (Policy Documentation), sets out the entire agreement that exists between you and Allianz in connection with this policy. You also acknowledge that you have not relied on any prior representations which are not expressly included in or are otherwise inconsistent with the Policy Documentation. Neither Honda nor any of its related companies have any liability in respect of this policy.

Euro shown in Graphite Lustre Metallic.