

2017
Q60



INFINITI

EMPOWER THE DRIVE

INFINITI

EMPOWER THE DRIVE

We are like you. We push ourselves beyond our comfort zone. While others might be content with making better machines, we are driven to go beyond—to design cars that push human potential. We build technology to enhance your senses, striking design that demands a response and performance that makes you feel more alive. Prepare to experience the road as it was intended.



INFINITI Q60

Empower the drive with performance. We gave it daring curves and a powerful stance. The exhilarating performance of a twin-turbocharged 298kW V6 engine.¹ And the unmatched responsiveness of the world's first digitally adaptive handling system.¹ Q60. Redefine the drive.



EXTERIOR DESIGN

EVERY LINE SHAPES AN EMOTION

Our philosophy—and the future of INFINITI design—takes stunning shape on the all-new Q60. Emotion is boundless. So is daring design.



ATHLETIC STANCE Large 19-inch alloy wheels make your intentions known. The Q60 is meant to perform.

IMPRESSION AMPLIFIED INFINITI signature cues express a unique design language. The double-arch grille reflects a bridge where the arc of the top mirrors the arc of the bottom. Eye-inspired LED headlights give a provocative stare, while the crescent-shaped C-pillar curves forward, punctuating the exterior with dynamic detail.

LOW PROFILE The dynamic proportions make a purpose-built statement: Low enough to hug the ground. Wide enough to deliver impressive stability.

AERODYNAMIC ADVANTAGE A .29 coefficient of drag says as much time has been spent making this sports coupe invisible to the wind as it is striking to the eye.

DEEP DRAMATIC CREASES Using a revolutionary 3-D stamping process that allows for aggressive creases and deep curves, the high character lines capture your imagination. Engineers even redesigned the door hinges so the leading edge tucks into the fender to provide dramatic sculpting.



A BODY OF ART CRAFTED EXPRESSLY FOR YOU

Tailored to accentuate the human form, the cabin celebrates the driver with bold thinking and fine modern materials.



VISUAL REWARD With Fine Vision electroluminescent gauges, see how quickly the needle moves under any lighting condition. The contrast delivers information clearly, helping to improve visibility at a glance.

FLEXIBLE DOORSTOP Every time you get in, you'll appreciate the thoughtfulness of the segment-exclusive flexible doorstop. Designed to stay open between set positions on level surfaces, you can easily enter and exit without worrying about the door springing back on you.

SPORT SEAT DESIGN Crafted to blend comfort with science, the all-new driver's seat performs on a higher design level. Feel the sport-inspired difference. Deep bolsters help hold you in place. Zero gravity research led to a form and cushioning seat design that can help reduce fatigue on long drives.

TAILORED AND ACCENTED Craftsmanship is obvious in the laser-cut holes, which permit tighter stitching and more dynamic free-flowing shapes. Around the centre console and throughout the interior, an available Silver Optic Fibre or Carbon Fibre¹ trim offers an upscale modern look.

NATURAL GRIP Your hands move in unique ways and a steering wheel should reflect that. This one does. Sport-inspired thumb grips and paddle shifters² are just the right shape for performance driving.



ACCELERATE YOUR POTENTIAL AND PERFORMANCE

This is power through innovation, where the forces of advanced technology blow past limits. Two turbo engines, including a first-ever INFINITI twin-turbo, culminate in jaw-dropping performance.

SIGN OF PERFORMANCE At INFINITI, performance is more than delivering a heightened driving experience. We believe it should unleash a more dynamic driver in you. And now, a shared passion can be boldly displayed by the letter S. Whether it is more intense power, tuning or design, the INFINITI Red Sport represents something special.



RED SPORT 400 The Red "S" badge represents the highest level of performance and power in its lineup. Q60 Red Sport, that means a 3.0L V6 twin-turbo 298kW engine.¹



298
KW

8.9*
L/100KM COMBINED
FUEL CONSUMPTION

ALL-NEW 3.0-LITRE V6 TWIN-TURBO 298KW ENGINE With the new V6 twin-turbo, torque builds quickly and power pours out like an endless flood. Acceleration is instant and feels limitless. Direct Injection Gasoline (DIG), water-cooled air charging, a turbo speed sensor and advanced turbine blade design make for quicker response and a higher peak.¹

155
KW

7.7*
L/100KM COMBINED
FUEL CONSUMPTION

2.0-LITRE I4 TURBOCHARGED ENGINE Feel the rush of a turbo. Experience the fuel economy of a four-cylinder. With optimal power and efficiency, you glide forward confidently. The turbo spools quickly to produce 155kW at 5,500 rpm and outputs a stirring 350Nm of torque.

¹ Figures tested in accordance with ADR81/02 (combined test). Figures stated for the purposes of comparison amongst vehicles only. Actual fuel consumption depends on factors such as traffic conditions, vehicle condition, how you drive and any accessories fitted.



CLOSER THRILLS All paddle shifters are not positioned equally. In the all-new Q60, paddle shifters¹ are steering wheel-mounted instead of column-mounted for easy reach during aggressive cornering.

HANDLING

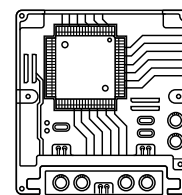
AMPLIFY EVERY MOVE DIGITALLY

Unleash the full-performance potential—of the all-new Q60 and yourself—with the world's first pairing of digital steering and suspension.



STEER WITH ENHANCED PRECISION When you turn the wheel, Direct Adaptive Steering^{®1} not only translates your input, it converts your intention into an electronic impulse. Since your steering is digitally processed, you get the response you want. Smooth. Quick. Precise. Every movement is a reaction to your command, tuned for a more natural connection.

FIRST DIGITALLY ADAPTIVE HANDLING SYSTEM



A performance car is engaging. An INFINITI is empowering. In the all-new Q60, you amplify your capabilities with a true 21st century handling system.



HANDLE WITH INSTANT ADAPTABILITY The all-new Q60 recalibrates the balance between comfort and performance into something revolutionary. Change from comfort-biased to dynamic ride with the push of a button and release a highly personal and responsive experience. Without you doing a thing, Dynamic Digital Suspension² continually adjusts to corners and road imperfections for lasting confidence.

CHOOSE YOUR DRIVE With up to 336 customisable driver settings³, the INFINITI Drive Mode Selector takes performance and control to a more refined level. Select between Standard, Snow, ECO, Sport, Sport+ and Personal modes³. Then, further tailor your drive by tuning steering, engine and suspension inputs. The result is one that suits the moment, and more importantly, can be personalised exactly to your liking. Expand your experience beyond road conditions and preset factory settings.

MORE WAYS TO CARVE A TURN

Personalise your performance with a range of choices for steering and suspension¹. Grasp your freedom. Drive unconstrained, fully immersed in every moment.



2 STEERING SYSTEMS

(1) **DIRECT ADAPTIVE STEERING®** Today, the future is in your hands and it's moving fast. At 1,000 adjustments a second, Direct Adaptive Steering^{®1} constantly fine-tunes your steering performance. Easy manoeuvrability at low speeds. Spirited driving on winding mountain roads. The system operates by digitally transmitting your steering input to the wheels for a smoother and quicker response. Unwanted vibrations are filtered out. Fewer steering corrections are required, giving you a strong feeling of confidence and ease.

(2) **HYDRAULIC ELECTRIC POWER STEERING** The everyday ease of vehicle speed-sensitive steering comes standard with the Q60 2.0t model. Steering effort decreases when squeezing into a parking spot or negotiating tight quarters at lower speeds.

2 SUSPENSION SYSTEMS

(1) **DYNAMIC DIGITAL SUSPENSION (DDS)** You are the driver. Let the all-new Dynamic Digital Suspension (DDS)¹ adapt to you. Enjoy a smooth ride when you want it or a more agile response when you demand it. New adaptive dampers change the focus based on your Drive Mode Selector choice. Switching between modes is instantaneous. So is the ability of DDS to constantly monitor chassis vitals like body roll, pitch and bounce rate. This is driver-centric performance for the digital age.

(2) **STANDARD SUSPENSION** With a double wishbone front and an independent multi-link rear suspension, you'll enjoy a smooth level ride. Handle every twist and turn with aplomb, thanks to shock absorbers that deliver a direct, linear feel with less road noise and vibrations. From now on, you are part of a dynamic team, where every S-curve belongs to you—and the all-new Q60.



CONNECTIVITY

IN TOUCH WITH YOUR CONNECTED WORLD

INFINITI InTouch™ makes your world flow. Your life is always moving, and INFINITI InTouch™² with Navigation³ seamlessly brings your world into your car. Stay ahead and in contact with voice, text, calendar, navigation and music.



A PREMIUM CONNECTION Every time you get into the all-new Q60, experience a seamless connection with technology that responds like the technology you hold in your hand. Connecting your smartphone to INFINITI InTouch™² with Navigation³ brings your world into your car. Hear text messages read to you. Listen to your playlist. Navigate unfamiliar streets or call your friends. The system even remembers your personal driving preferences.

EMPOWER YOUR TOUCH The INFINITI Controller puts simple, intuitive control of your technology systems at your fingertips. It allows you to interact via the inputs most intuitive to you—turning ring, touch-screen, input buttons, and even steering wheel controls—responding to you rather than you adjusting to it.

ADJUSTS TO YOU INFINITI InTouch™² delivers an intuitive experience right from your driver's seat in the manner that best suits you. You can interact with the state-of-the-art system however you find easiest. The top screen can be operated by touch, steering wheel switches or the INFINITI Controller; it is primarily used for driving information and navigation. The bottom screen can be operated by touch and lets you manage the infotainment systems, such as audio and climate control.

BLUETOOTH® STREAMING AUDIO Turn your Bluetooth®-enabled smartphone into a source of music, and listen to your top playlists over the all-new Q60's audio system.⁴

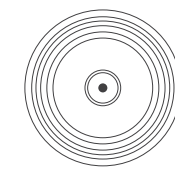
HANDS-FREE VERSATILITY With the INFINITI Bluetooth® Hands-free Phone System,⁴ you can make and receive wireless calls using voice recognition. No fumbling. No need for a headset. Just press a button on the steering wheel.



SOUND

A NEW STAGE FOR A NEW SOUND

Hear it here first. The new Bose® Performance Series¹ makes its worldwide debut on the all-new Q60. Enjoy concert-like sound that envelops you, transforming the cabin into a dynamic listening experience.



13 PERFORMANCE SERIES SPEAKER BOSE® AUDIO¹

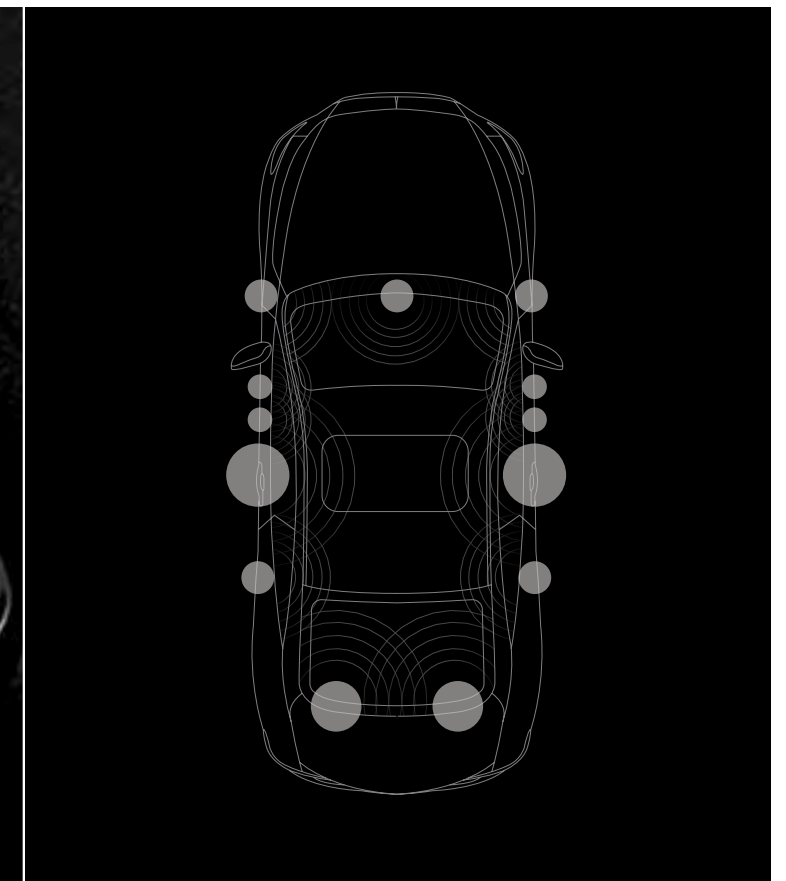
THE LATEST FROM BOSE® For those who demand a performance-focused sound system, the new Bose® Performance Series with Advanced Staging Technology delivers. Thirteen high-performance speakers, including multiple new 10" and 6 x 9" woofers and a lightweight silk dome tweeter achieve "live performance" precision. Revel in a wider and more precise soundstage, where the acoustics are always ideal.¹

PROPRIETARY DIGITAL SIGNAL PROCESSING A recent Bose® innovation, Advanced Staging Technology utilises advanced algorithms to dynamically direct music to their ideal locations within the cabin. Instruments and vocals have exceptional clarity. So from the driver's seat, you feel as if you're sitting in the front row at a concert.¹

IMPROVED AUDIO PERFORMANCE Immerse yourself in an exhilarating sound experience. AudioPilot® 2.0 Noise Compensation Technology constantly monitors outside sounds and adjusts the music accordingly while Centerpoint® 2.0 Surround Technology allows you to enjoy surround sound from CDs, MP3 CDs and DAB+ radio.¹

ACTIVE NOISE CANCELLATION Minimise unwanted road noise and create an optimal listening environment with Active Noise Cancellation¹. The technology works by neutralising distracting sounds with an acoustically opposite signal. The quieter the cabin, the better the music and conversation.

ACOUSTIC GLASS Create serenity all around you. Thin sound-absorbing material between the glass layers significantly reduces noise, delivering a more personal driving experience.



EFFORTLESSLY EXTEND YOUR ABILITIES

Cruise smarter. See further. Steer easier. View clearer. Respond faster. With available driver-enhancing technologies, you can now move with a new level of ease.

CRUISE SMARTER

Set your desired speed and distance and Intelligent Cruise Control (Full-Speed Range)^{1,5} can automatically adjust your speed in slowing traffic. When traffic speeds resume, Intelligent Cruise Control can bring you back up to your preset speed and distance.

STEER EASIER

Working with Direct Adaptive Steering,⁹ Active Lane Control^{1,6} evaluates the road ahead and can automatically make small steering angle corrections due to uneven road surfaces or crosswinds.

RESPOND FASTER

High Beam Assist³ automatically dims your high beams as oncoming vehicles approach, then turns them back on when traffic clears.

SEE FURTHER

The Adaptive Front lighting System (AFS)¹ improves visibility at intersections and around curves by sensing your steering and turning the headlights. Together with LED auto-leveling headlights, AFS helps you see not just ahead, but around corners as well.

VIEW CLEARER

Gain a new perspective on what's around you. With the Around View[®] Monitor with Moving Object Detection,¹⁷ four cameras and one virtual 360[°] view from above makes it easy to see and in even the tightest spaces. Peek around corners with confidence, thanks to a new front camera that looks out to the side with a sweeping near-180[°] view.



SAFETY

EFFORTLESSLY EXTEND YOUR AWARENESS

A unique combination of active and passive safety innovations enhance your ability to respond instinctively.¹



A SHIELD OF PROTECTION The INFINITI Safety Shield^{®1} concept—our comprehensive approach to safety—layers technologies to help monitor conditions, help you avoid a collision and help protect you and your passengers if one occurs.

MORE CONFIDENT IN REVERSE Backup Collision Intervention^{1,8} helps increase your awareness. As you back up, the system warns you if approaching vehicles or large stationary objects are detected behind your all-new Q60, and it can help you avoid a collision by applying the brakes.

RESPOND TO YOUR SURROUNDINGS Forward Emergency Braking with Pedestrian Detection^{1,9} can detect vehicles in the lane ahead of you. If deceleration is needed to help minimise a collision or even help prevent one, the accelerator pedal can be pushed up and the brakes can be applied. The system adds another dimension of security by also looking out for pedestrians that enter your vehicle's path.

BRAKE CONFIDENTLY The all-new Q60 braking system responds automatically to changing conditions with 4-wheel Anti-lock Braking System (ABS) and Electronic Brake force Distribution (EBD).

SENSES WHERE YOU CAN'T SEE The Blind Spot Warning and Blind Spot Intervention[®] Systems^{1,10} use sensors to detect vehicles entering the blind spot area. First, a warning light will illuminate—then, if necessary, a brief steering input can be provided to help guide your all-new Q60 back to your current driving lane.

RECOGNISING DANGER Predictive Forward Collision Warning^{1,11} uses radar to enable your all-new Q60 to continuously monitor not only the vehicle directly ahead of you but also the vehicle in front of that one. If your all-new Q60 detects a potential risk, it provides an audible and visual alert.

MAINTAIN YOUR LANE The Lane Departure Warning and Lane Departure Prevention Systems^{1,12} monitor lane markings and can help warn you if you start to drift. If the drift continues, the Lane Departure Prevention System can provide brief steering input to ease your all-new Q60 back towards the centre of your lane.

STRONGER AND LIGHTER Ultra high-strength steel is twice as strong as conventional steel and is built around you to enhance your safety in case of a collision.

ENHANCED PROTECTION Front seat-mounted side-impact supplemental air bags and roof-mounted curtain side-impact supplemental air bags with rollover sensor to enhance protection.^{1,13}



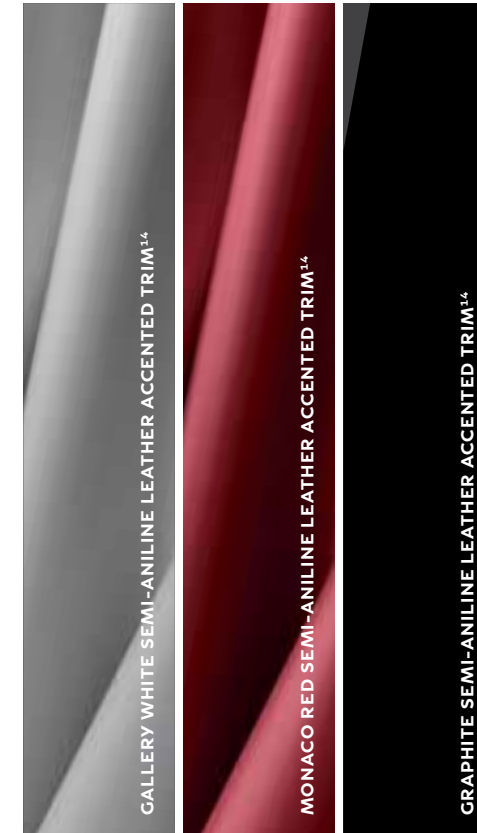
MAKE IT YOURS

EXTERIOR COLOURS



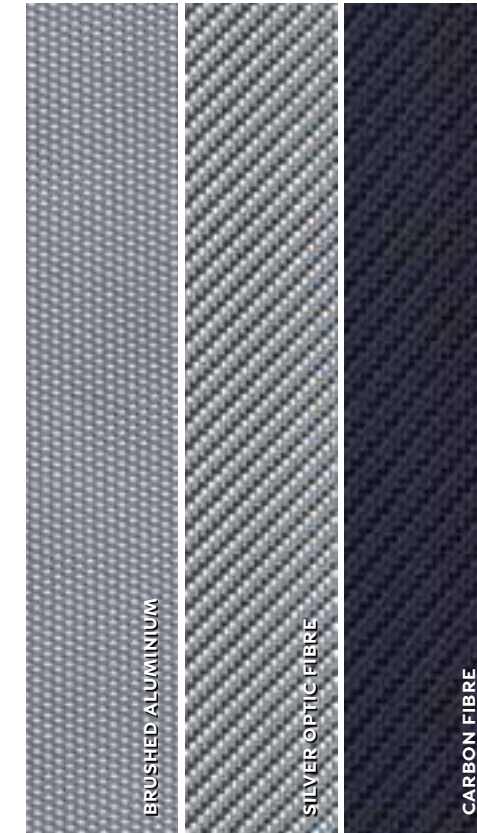
Please see colour and trim matrix to view colour applicability per vehicle.
* Metallic paint is optional at a cost

INTERIOR COLOURS



Please see colour and trim matrix to view trim applicability per vehicle.

INTERIOR TRIM



WHEELS



19 X 9.0-INCH ALUMINUM-ALLOY WHEELS
STANDARD ON Q60 GT

19 X 9.0-INCH FRONT, 19 X 9.5-INCH ALUMINUM-ALLOY
WHEELS
STANDARD ON Q60 SPORT PREMIUM AND RED SPORT

The vehicle images used in this brochure are for illustration purposes only and may be overseas models. While they are closely representative of the models available in the Australian range, minor variations may occur. Infiniti Cars Australia has used its best endeavours to ensure that all images, information and specifications contained in this brochure were correct at the time of printing. The colours shown may vary from actual colours. However, Infiniti Cars Australia reserves its rights, to the full extent permitted by law, at its discretion at any time and without prior notice, to discontinue or change the models, features, specifications, designs and prices of the products referred to in this brochure (including any optional equipment) without incurring liability whatsoever to any purchaser or prospective purchaser of any such products. Some items in this brochure are optional at extra cost. Some options may be required in combination with other options. Infiniti has taken care to ensure that the colour swatches presented here are the closest possible representations of actual vehicle colours. Swatches may vary slightly due to the printing process and whether viewed in daylight, fluorescent or incandescent light. Please see the actual colours at your local Infiniti Centre. Always consult your Infiniti Retail Centre for the latest information on models, specifications, features, prices, options and availability. Nissan Motor Co. (Australia) Pty. Ltd. t/a Infiniti Cars Australia ACN 004 663 156.

1 Available on select models. **2** Driving is serious business. Only use INFINITI InTouch Apps™ when safe to do so. INFINITI InTouch available with compatible mobile phones. **3** Never program while driving. GPS mapping may not be detailed in all areas or reflect current road status **4** Availability of specific features is dependent upon the phone's Bluetooth® support. Please refer to your phone Owner's Manual for details. Bluetooth word mark and logos are owned by Bluetooth SIG, Inc., and any use of such marks by Infiniti is under license. **5** Intelligent Cruise Control is not a collision avoidance or warning device. Designed to use limited braking. Failure to apply the brakes could result in an accident. **6** Active Lane Control cannot prevent accidents or loss of control. It is the driver's responsibility to be in control of the vehicle at all times. ALC may not detect the lane markers in certain road, weather or driving conditions. **7** AVM with MOD cannot completely eliminate blind spots and may not detect every object. MOD operates at vehicles speeds below 8 kph. Always check surroundings and turn to look behind you before moving vehicle. **8** BCI will not detect every object, and speed limitations apply. Always check surroundings and turn to look behind you before moving vehicle. See Owner's Manual for details. **9** FEB with Pedestrian Detection is not a replacement for responsible driving. May not provide braking or pedestrian detection in certain conditions. Limitations apply. See Owner's Manual for details. **10** Blind Spot Warning/Blind Spot Intervention Systems are not a substitute for proper lane change procedures. The systems will not prevent contact with other vehicles or accidents. They may not detect every vehicle or object around you. **11** PFCW is intended to warn you before a collision occurs; it cannot prevent a collision. Speed and other limitations apply. See Owner's Manual for details. **12** The Lane Departure Warning/Lane Departure Prevention Systems operate only when the lane markings are clearly visible on the road. Speed limitations apply. See your Owner's Manual for more details. **13** Air bags are only a supplemental restraint system; always wear your seat belt. Even with the occupant-classification sensor, rear-facing child restraints should not be placed in the front-passenger's seat. All children 12 and under should ride in the rear seat properly secured in child restraints, booster seats, or seat belts according to their size. Air bags will only inflate in certain accidents; see your Owner's Manual for more details. **14** Leather accented features and upholstery may contain synthetic material.

iPod is a registered trademark of Apple Inc. Bose is a registered trademark of Bose Corporation.

SPECIFICATIONS

	Q60 GT	Q60 Sport Premium	Q60 Red Sport
POWER			
Engine			
2.0-litre (1991cc) DOHC, turbocharged 16 valve inline 4-cylinder engine, aluminium alloy block heads with Idle Stop/Start - 155kW @ 5,500 rpm - 350Nm @ 1,250-3,500 rpm	•	•	—
3.0-litre V6 twin turbo 298kW (2997cc) DOHC, turbocharged 24-valve engine, aluminium-alloy block and heads with water-cooled air charging system, turbo sensor and dual intercooler water pumps - 298kW @ 6,400 rpm - 475Nm @ 1,600-5,200 rpm	—	—	•
Transmission			
7-speed automatic with Adaptive Shift Control (ASC)	•	•	•
INFINITI Drive Mode Selector - Standard, Snow, Sport, Personal	•	•	—
INFINITI Drive Mode Selector - Standard, Snow, Sport, Sport +, Personal, Eco	—	—	•
Hill Start Assist	•	•	•
Drive Type			
Rear Wheel Drive	•	•	•
HANDLING			
Suspension			
Front – Independent, double wishbone with coil springs over shock absorbers, stabiliser bar	•	•	—
Rear – Independent, multi-link suspension with Dual Flow Path® shock absorbers, stabiliser bar	•	•	—
Dynamic Digital Suspension Front – Electronically controlled, independent double wishbone with coil springs over shock absorbers, stabiliser bar	—	—	•
Dynamic Digital Suspension Rear – Electronically controlled, independent, multi-link with Dual Flow Path® shock absorbers, stabiliser bar	—	—	•
Steering			
Hydraulic Electronic Power Steering	•	—	—
Direct Adaptive Steering® (DAS) with customisable steering ratio	—	•	•
Active Trace Control – adjusts vehicle braking and engine torque to help enhance cornering feel	•	•	•
Brakes			
Front two-piston swing-caliper disc brakes (330mm) and rear single-piston swing-caliper disc brakes (316mm)	•	—	—
Akebono performance brakes. Front four-piston swing-caliper disc brakes (355mm) and rear two-piston opposed-caliper disc brakes (350mm), Dark chrome colour painted with INFINITI lettering	—	•	—
Akebono performance brakes. Front four-piston swing-caliper disc brakes (355mm) and rear two-piston opposed-caliper disc brakes (350mm), Red colour painted with INFINITI lettering	—	—	•
Wheels and Tyres			
19 x 9.0-inch, 3D, Bi-tone alloy wheels with 255/40 R19 run flat tyres	•	—	—
19 x 9.0-inch, 3D, Dark chrome alloy wheels with 245/40 R19 94W run flat tyres	—	•	•
EXTERIOR			
Features			
Auto-levelling LED headlights with Daytime Running Lights	•	•	•
Automatic on/off headlights	•	•	•
Adaptive front Lighting System (AFS) with High Beam Assist (high/low automatic change)	◦	•	•
Front LED fog lights	•	•	•
LED rear brake lights and center high-mounted stoplight (CHMSL)	•	•	•
Follow-me-home lighting	•	•	•
Power sliding tinted glass sunroof with one-touch auto-open/close tilt feature and sliding sunshade with I-Key linked open/close system	◦	•	•
Remote keyless entry system with door handle touch selective unlocking of driver's door or all doors	•	•	•
Flexible doorstop	•	•	•
Remote power-opening of windows using INFINITI Intelligent Key	•	•	•

• Standard ◦ Optional Enhancement Pack Equipment — Not Available

	Q60 GT	Q60 Sport Premium	Q60 Red Sport
EXTERIOR			
Features			
Electrically operated and folding outside mirrors with integrated LED turn signal lamp	•	•	•
Heated outside mirrors with reverse tilt-down feature	•	•	•
Comprehensive airflow management for low coefficient of drag (Cd) and zero-lift front and rear aerodynamics	•	•	•
Electronically adjustable steering wheel with memory function – tilt and telescopic	•	•	•
Rain-sensing front windshield wipers	•	•	•
Speed-sensing flat blade variable intermittent front windshield wipers with drip wipe	•	•	•
Front door handle courtesy lights	•	•	•
Rear window defroster with indicator light and timer	•	•	•
Dual chrome exhaust finishers	•	•	—
Unique dual exhaust tips with brushed satin finish	—	—	•
INTERIOR			
Features			
INFINITI Intelligent Key with Push Button Ignition	•	•	•
Automatic dual-zone climate control with auto-recirculation and Grape Polyphenol Filter	•	•	•
Power windows with illuminated switches and one-touch auto-up/down with auto-reverse feature	•	•	•
Power door locks with automatic locking feature	•	•	•
Retained accessory power for windows and sunroof (if equipped)	•	•	•
Front sun visors with illuminated vanity mirrors	•	•	•
Dual overhead front map light with overhead sunglass storage	•	•	•
Front seatback map pockets; front door pockets	•	•	•
Dual front and rear cup holders	•	•	•
Front armrest with storage compartment, one 12-volt power outlet, auxiliary input jacks and two USB connection ports	•	•	•
Front and rear carpeted floor mats	•	•	•
Seating and Trim			
Sport semi-aniline leather accented seating	•	•	•
Tailored and accented laser cut stitching throughout the cabin	•	•	•
Black Tricot roof liner	•	•	•
Brushed aluminium interior trim	•	—	—
Carbon fibre interior trim (with black leather)	—	•	•
Silver optic fibre interior trim (with white or red leather)	—	◦	◦
8-way power adjustable driver's seat with two-way power lumbar support	•	•	•
8-way power adjustable front passenger's seat	•	•	•
Flat-folding rear seat back	•	•	•
Dual occupant memory system for driver and passenger's seat, mirrors, and steering wheel settings, linked to individual INFINITI Intelligent Keys	•	•	•
Rear center tray with cup holder	•	•	•
Heated front seats	•	•	•
Leather-wrapped 3-spoke steering wheel and shift knob with aluminum accent	•	•	•
Interior ambient lighting – cup holders, door grips, inside handle, door finisher	•	•	•
Aluminium front doorsill kick plates with INFINITI logo	•	•	•
Aluminium-accented pedals and footrest	—	•	•
Audio and Entertainment System			
6-speaker audio system with AM/FM, CD with MP3 playback capability, Radio Data System (RDS) and speed-sensitive volume control	•	—	—
Bose® Performance Series Audio System with Advanced Staging Technology, Centerpoint® 2.0 Surround, AudioPilot® 2.0 Noise Compensation, 13 speakers (featuring door-mounted metal/aluminum speaker grilles), multiple 10" and 6 x 9 woofers and a lightweight silk dome tweeter, AM/FM High-Definition (HD) radio, CD player with MP3 playback capability, Radio Data System (RDS) and speed-sensitive volume control	◦	•	•

• Standard ◦ Optional Enhancement Pack Equipment — Not Available

SPECIFICATIONS

	Q60 GT	Q60 Sport Premium	Q60 Red Sport
Audio and Entertainment System			
Active Noise Cancellation – only with Bose® Performance Series Audio System	○	●	●
DAB radio	●	●	●
Two USB connection ports for iPod® interface, flash drive or other compatible devices	●	●	●
Streaming audio via Bluetooth® wireless technology	●	●	●
Steering wheel-mounted audio controls	●	●	●
In-glass diversity antenna	●	●	●
Instrumentation and Driver Controls			
INFINITI InTouch™ dual display system screens, LCD/VGA 8-inch upper and 7-inch lower colour vehicle-information displays	●	●	●
INFINITI InTouch™ with Satellite Navigation and live SUNA traffic updates	●	●	●
INFINITI Voice Recognition for audio, phone and vehicle-information systems	●	●	●
Bluetooth® Hands-free Phone System	●	●	●
Rear View Monitor with front and rear sonar system	●	—	—
Around View Monitor with Moving Object Detection and front and rear sonar system	○	●	●
Multi-function trip computer with fuel consumption and range, outside temperature display, driving aids and radio	●	●	●
Fine Vision electroluminescent gauges	●	●	●
Steering-wheel mounted paddle shifters	—	●	●
Auto-dimming rear-view mirror	●	●	●
Cruise control and Speed limiter with steering wheel-mounted switches	●	●	●
Eco pedal	—	—	●
SAFETY FEATURES			
Safety			
Front-seat 3 point seat belts with pretensioners and load limiter	●	—	—
Front-seat intelligent 3 point seat belts with pretensioners, load limiter and pre-crash function	—	●	●
Forward Emergency Warning and Braking with Pedestrian Detection	●	●	●
Predictive Forward Collision Warning (PFCW)	●	●	●
Backup Collision Intervention (BCI)	—	●	●
Blind Spot Warning (BSW) with Blind Spot Intervention (BSI)	—	●	●
Lane Departure Warning (LDW) and Lane Departure Prevention (LDP) with Active Lane Control	—	●	●
Driver and front-passenger side-impact supplemental air bags	●	●	●
Roof-mounted curtain side-impact supplemental air bags for front and rear-seat outboard occupant head protection with rollover sensor	●	●	●
Front seat belts with load limiters, driver and passenger's seat Emergency Locking Retractor (ELR)	●	●	●
Second-row 3-point seat belts with ELR and load limiters	●	●	●
Zone Body construction with reinforced passenger compartment and front and rear crumple zones	●	●	●
ISOFIX child restraint system	●	●	●
Lockable glove compartment	●	●	●
Brake Assist (BA)	●	●	●
4-wheel Anti-lock Braking System (ABS) with Electronic Brake force Distribution (EBD)	●	●	●
Advanced Vehicle Dynamic Control (VDC) with Traction Control System (TCS)	●	●	●
Tyre Pressure Monitoring System (TPMS) provides specific information for each tyre and low pressure warning	●	●	●
Emergency inside trunk release	●	●	●
Security			
Remote keyless entry system with door handle touch selective unlocking of driver's door or all doors	●	●	●
Vehicle Immobiliser system with anti-theft alarm	●	●	●

● Standard ○ Optional Enhancement Pack Equipment — Not Available

COLOURS & TRIMS

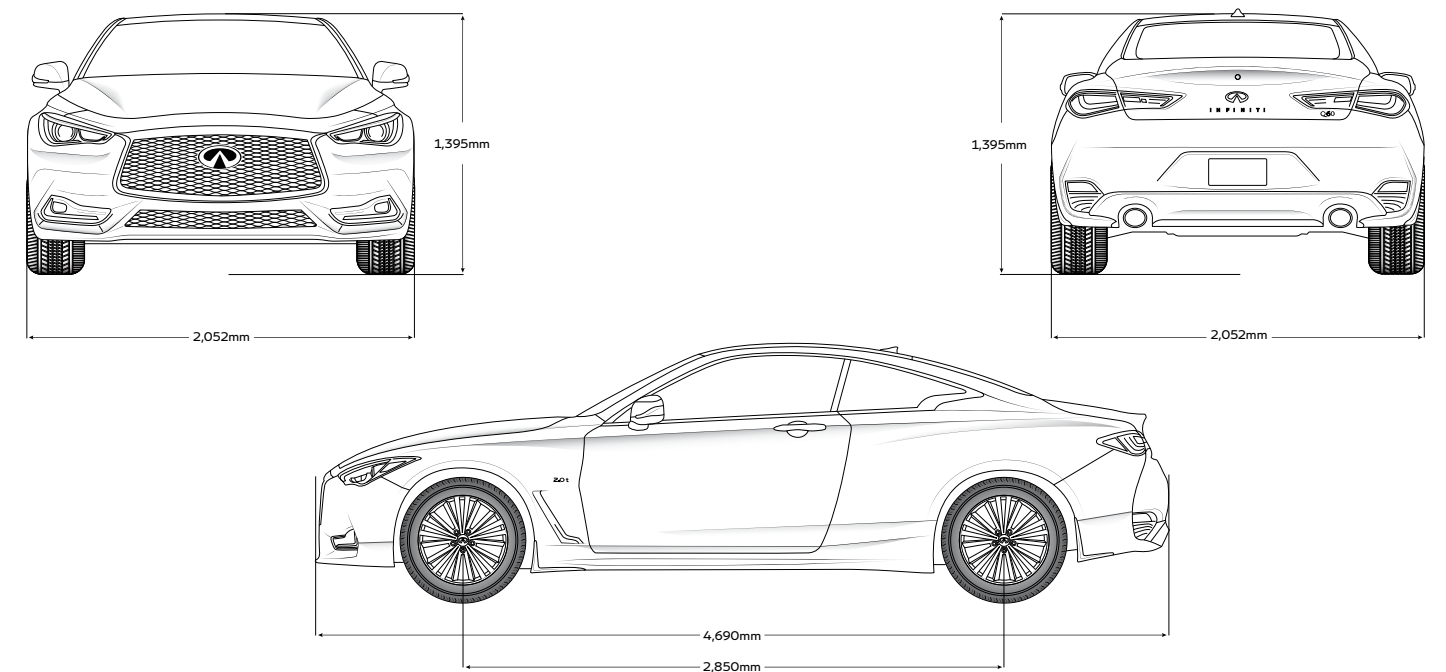
		Q60 GT	Q60 Sport Premium	Q60 Red Sport
Upholstery		Leather accented trim ¹⁴		Leather accented trim ¹⁴
Exterior Colours	Code	Graphite (Z)	Graphite (Z)	White (Q) Monaco Red (A)
				Graphite (Z)
				White (Q) Monaco Red (A)
Black Obsidian	KH3	●	●	—
Pure White	QAW	●	—	●
Midnight Black	GAG	○	○	○
Graphite Shadow	KAD	○	○	○
Iridium Blue	RAY	○	○	○
Liquid Platinum	K23	○	○	—
Hagane Blue	RBP	○	○	—
Majestic White	QAB	—	○	○
Dynamic Sunstone Red	NBA	—	—	○
Interior trim				
Brushed Aluminium	—	●	—	—
Carbon fibre	—	—	●	●
Silver optic fibre	—	—	●	●

DIMENSIONS

Overall length	4,690mm
Overall width with mirrors/mirrors folded	2,052mm / 1,850mm
Overall height (unladen)	1,395mm
Wheelbase	2,850mm

VARIANT/ENGINE AVAILABILITY

	2.0I Petrol RWD 7AT	3.0I Petrol RWD 7AT
Q60 GT	●	—
Q60 Sport Premium	●	—
Q60 Red Sport	—	●



● Standard (at no additional cost) ○ Available (at a cost) — Not Available

TECHNICAL SPECIFICATIONS

	GT	Sport Premium	Red Sport
POWER			
Fuel Type	Petrol	Petrol	Petrol
Displacement	1,991	1,991	2,997
Valve train	I-4 DOHC, 16 valve	I-4 DOHC 16 valve	V6 DOHC, 24 valve
Intake system			
Exhaust system	Dual exhaust system	Dual exhaust system	Dual exhaust system
Power	155 kW @ 5,500rpm	155 kW @ 5,500rpm	298 kW @ 6,400rpm
Torque	350 Nm @ 1,250 – 3,500rpm	350 Nm @ 1,250 – 3,500rpm	475 Nm @ 1,600 – 5,200rpm
Transmission	7-speed automatic transmission	7-speed automatic transmission	7-speed automatic transmission
Driven Wheels	RWD	RWD	RWD
PERFORMANCE			
Top speed km/h	235	235	250
Estimated fuel consumption*			
Urban*	10.2	10.2	13.2
Extra urban*	6.2	6.2	6.5
Combined*	7.7	7.7	8.9
CO2 emissions*	175	175	207
HANDLING			
Steering	Hydraulic Electronic Power Steering	Direct Adaptive Steering	Direct Adaptive Steering
Suspension			
Front	Independent, double wishbone with coil springs over shock absorbers, stabiliser bar	Independent, double wishbone with coil springs over shock absorbers, stabiliser bar	Dynamic Digital Suspension Front – Electronically controlled, independent double wishbone with coil springs over shock absorbers, stabiliser bar
Rear	Independent, multi-link suspension with Dual Flow Path® shock absorbers, stabiliser bar	Independent, multi-link suspension with Dual Flow Path® shock absorbers, stabiliser bar	Dynamic Digital Suspension Rear – Electronically controlled, independent, multi-link with Dual Flow Path® shock absorbers, stabiliser bar
Brakes			
Front	Twin-piston swing-caliper disc brakes 330mm	Four-piston opposed-caliper disc brakes 355mm	Four-piston opposed-caliper disc brakes 355mm
Rear	Single-piston swing-caliper disc brakes 316mm	Two-piston opposed-caliper disc brakes 350mm	Two-piston opposed-caliper disc brakes 350mm
Wheels and tyres	19 x 9.0-inch, 3D, Bi-tone alloy wheels with 255/40 R19 run flat tyres	19 x 9.0-inch, 3D, Dark chrome alloy wheels with 245/40 R19 run flat tyres	19 x 9.0-inch, 3D, Dark chrome alloy wheels with 245/40 R19 run flat tyres
CAPACITIES AND WEIGHTS			
Curb weight (unladen)	1,698	1,742	1,784
Luggage volume	341 litres	341 litres	341 litres
Fuel capacity	80 litres	80 litres	80 litres
EXTERIOR			
Coefficient of drag	0.29	0.29	0.29


* Figures tested in accordance with ADR81/02 (combined test). Figures stated for the purposes of comparison amongst vehicles only. Actual fuel consumption and CO2 emissions depends on factors such as traffic conditions, vehicle condition, how you drive and any accessories fitted.

THE FORMULA FOR PARTNERSHIP



The excitement builds. The pressure mounts. Emotions surge. This is how partnership feels when technology, ingenuity and passion fulfil their promise. This is Infiniti's Formula One know-how.


We may be the ones racing, but you are the winner. Infiniti provides engineering resources and knowledge to the Renault Energy F1 power unit's Energy Recovery System. By combining our expertise in performance hybrid technologies with the knowledge and skills of the Renault Sport Formula One racing team, we can translate racing technology and driver exhilaration from the track to the road, delivering you emotionally charged vehicles with forward thinking.



Visit us online to create your ideal INFINITI, get pricing and more.

www.infiniticars.com.au

Join our community, and get the latest info.

 facebook.com/InfinitiCarsAustralia

 twitter.com/infinitiaus

 instagram.com/infinitiaus/