

XF



JAGUAR

The Jaguar XF fuses sports car styling and performance with the refinement, features and space of a luxury saloon.

XF embodies the Jaguar philosophy of creating beautiful, fast cars, and defines a new driving experience: Sporting Luxury.







XF Sporting luxury 2-9 XF Interior craftsmanship 10-15
Intuitive technology 16-21 Engine choice 22-23
Driving dynamics 24-29 Safety 30-31 Choices and
technical specifications 32-47 XF Accessories 48-51
Owning your XF 52-53





Like those
who will drive it,
the XF is individual
and assured.

The first sporting saloon to deliver Jaguar's stunning new design language. Its bold new face looks to the future, while reaffirming the marque's sporting DNA. The profile is unique – athletic and assertive, the dramatic lines of a coupé enveloping a spacious cabin with four doors and seating for five adults. And the visual excitement is underpinned by the acknowledged strengths of Jaguar engineering and the latent power of XF's dynamic character. So its looks will engage you emotionally, and its driver-focused flavour will do the rest.





The XF: a striking design that re-draws the boundaries for sports saloons.

Its abilities defined by proportion – long, low and wide, the XF clearly has muscle below its softly contoured skin. The strong grille creates a distinctive signature, emphasising a broad, solid stance. The low nose, rising waist, sweeping roofline and powerful shoulders combine to imbue visual dynamism – a promise of performance even when XF is standing still. And the detailing is exquisite and subtle, from the woven mesh of the grille to the dramatically sculpted light clusters, from the side power vents to the large alloy wheels.





JAGUAR

SV8



Relaxed, confident and luxurious design supported by outstanding ability, control and performance.

This is Sporting Luxury. Inside XF it begins with a true sense of space, and continues with craftsmanship, exquisite materials and relentless attention to detail. Leather, twin-needle stitching and handcrafted wood veneer next to textured aluminium for a chic,

contemporary flavour and a sharper edge. At night, Phosphor blue halo illumination takes its cues from contemporary design. And the same soothing Phosphor blue highlights the aluminium-coloured faces of the XF's dials and instruments.





Audio/TV Tr 1 00:10
AM/FM Settings
CD Folders
Portable audio USB iPod AUX
TV MIA Repeat
00:29



AIRBAG

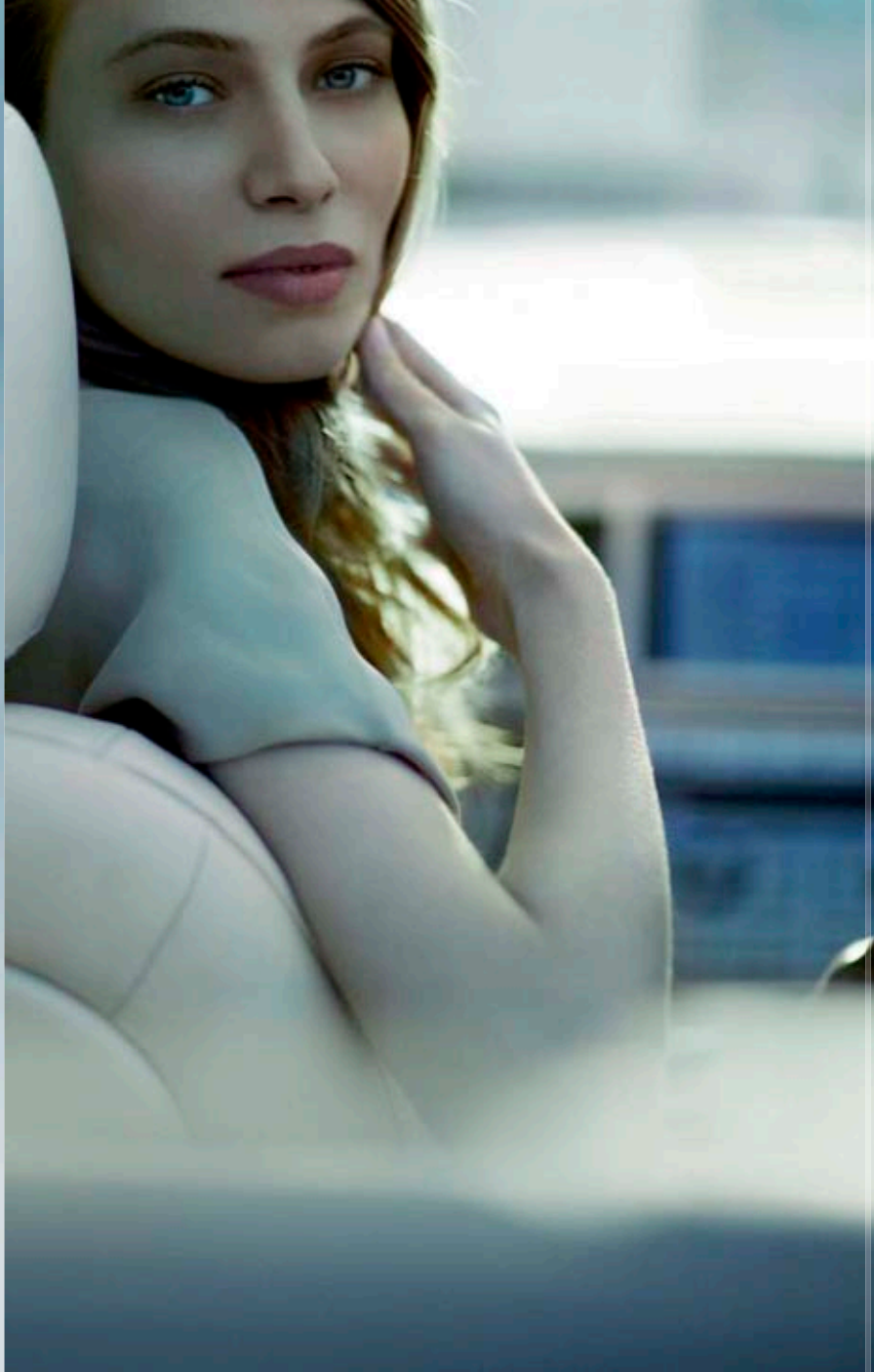




At the heart of the fascia a 7 inch Touch-screen controls most major functions, reducing buttons to a discreet panel below the screen.

The XF's JaguarDrive Selector™ throws off convention to set a new standard for automatic transmission control. Its rotary action is light, positive, intuitive. Many features remain hidden until they are actually needed – so the XF's automatic climate control system includes rotating vents that roll quietly and smoothly out of sight when not in use.





The XF epitomises Jaguar's philosophy that good design does not have to be complicated.

XF demonstrates clear understanding of modern demands. Think of innovative features born out of deep insight that deliver a whole new level of intuitive functionality. Compact design creates room for more creature comforts than ever before, from optional iPod or MP3 player connectivity to space for sunglasses, drinks, and CD cases.

iPod is a trademark of Apple Computer Inc. registered in the U.S and other countries.

Jaguar's intelligent use of technology and driver-friendly Touch-screen control provides new levels of comfort, ease of use, and uncluttered space.

With a light touch, JaguarSense™ activates front interior lights and glovebox release.

And the option of JaguarVoice™ can control many features simply by asking. The optional Blind Spot Monitor* takes much of the uncertainty out of lane changing, whilst optional front and standard rear parking aids make manoeuvring easier. Choose the XF's optional Rear Camera Parking Aid[△] and objects that may have been obscured when reversing can now be seen.

Jaguar's Intelligent Lighting System can be specified with powerful Bi-Xenon headlamps[△] which also feature cornering lamps for improved illumination when manoeuvring at low speed. Adaptive Cruise Control* is also available. The system alters the chosen speed as traffic demands, while the XF's Automatic Speed Limiter does what it says, keeping you to the limit you set, not over it.

* Please consult your dealer for availability

[△] Standard on 4.2 V8 and SV8









The XF is a sports saloon that lets your time behind the wheel suit your mood.

And it does it with the most advanced technologies, beautifully applied. Every level of audio system features a 6 disc in-dash CD player and at least eight speakers. The XF's Portable Audio Interface option provides iPod and MP3 player connectivity including full function control through the 7 inch Touch-screen. And with Bluetooth® telephone connectivity as standard, you need never be out of touch. The XF also offers optional digital/analogue television technology[△]. The optional Bowers & Wilkins 440W surround sound system[△] is designed in association with one of the audio industry's most respected specialists,

who understands sound as deeply as Jaguar understands engineering. Like Jaguar, Bowers & Wilkins push craftsmanship to achieve unrivalled quality. Critically acclaimed by audiophiles, artists and recording engineers alike, their signature Kevlar® mid-range drivers and specially designed aluminium-dome tweeters complete a sound system tuned by their acoustic experts specifically for the XF. The system features a remote amplifier with Dolby® Pro Logic® II surround sound and 13 speakers plus sub woofer.

[△] Standard on XF SV8





The keyless entry system

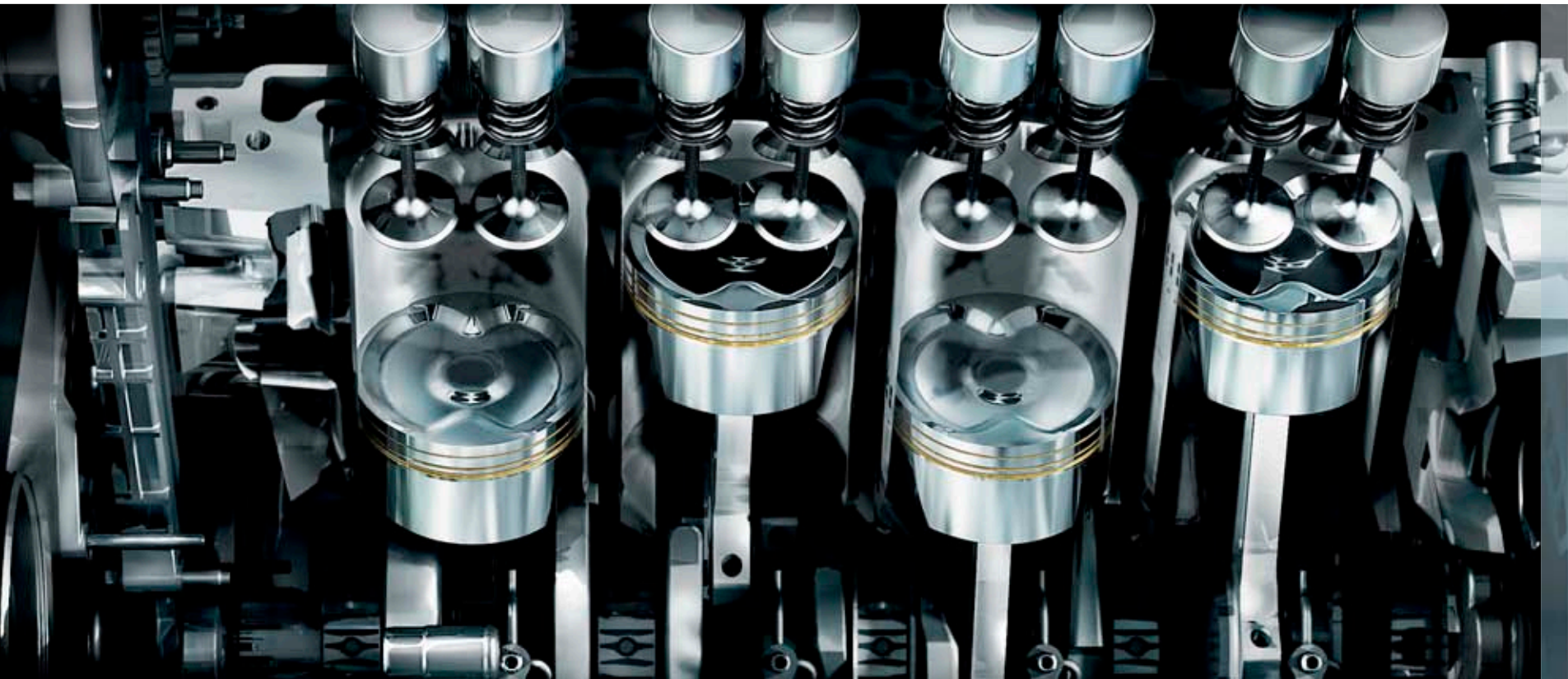
– is a thoughtful feature - standard on 4.2 V8 and SV8 models, that combines convenience with ease of use. Approach the XF with its Jaguar Smart Key™ in your bag or pocket, pull the door release, and the system triggers the security-protected opening. And the XF has its own ‘handshake’. At start-up, the button in front

of the unique JaguarDrive Selector™ pulses red, like a heartbeat. Press it: the engine starts and the JaguarDrive Selector™ rises – softly, into the palm of your hand. Transmission positions are selected simply by turning the JaguarDrive Selector™ with the fingertips, or to go from D to S, a simple push and turn. Selecting D and pulling away

releases the Electric Parking Brake. As the XF starts, the rotating vents turn silently from their flush, parked position to their functional open position, and the standard Touch-screen initialises to its home page. The XF is ready to be enjoyed.



Jaguar knows that the heart of a great car is a great engine; the XF offers four, from one of the most refined diesels in its class to a supercharged 4.2-litre petrol V8 with 306kW, through a 3.0-litre V6 and 4.2-litre naturally aspirated petrol V8 that give refinement, flexibility and outstanding performance.



The XF's 4.2-litre petrol V8s, with or without supercharger, are the same highly regarded engines that power Jaguar's XK and XKR sports cars. Compact and light, but big on performance and refinement, both feature all-aluminium construction, variable camshaft phasing, four overhead camshafts and four valves per cylinder. The naturally aspirated V8 develops 219kW and 411Nm of torque, with wonderful refinement, deep character and effortless performance.

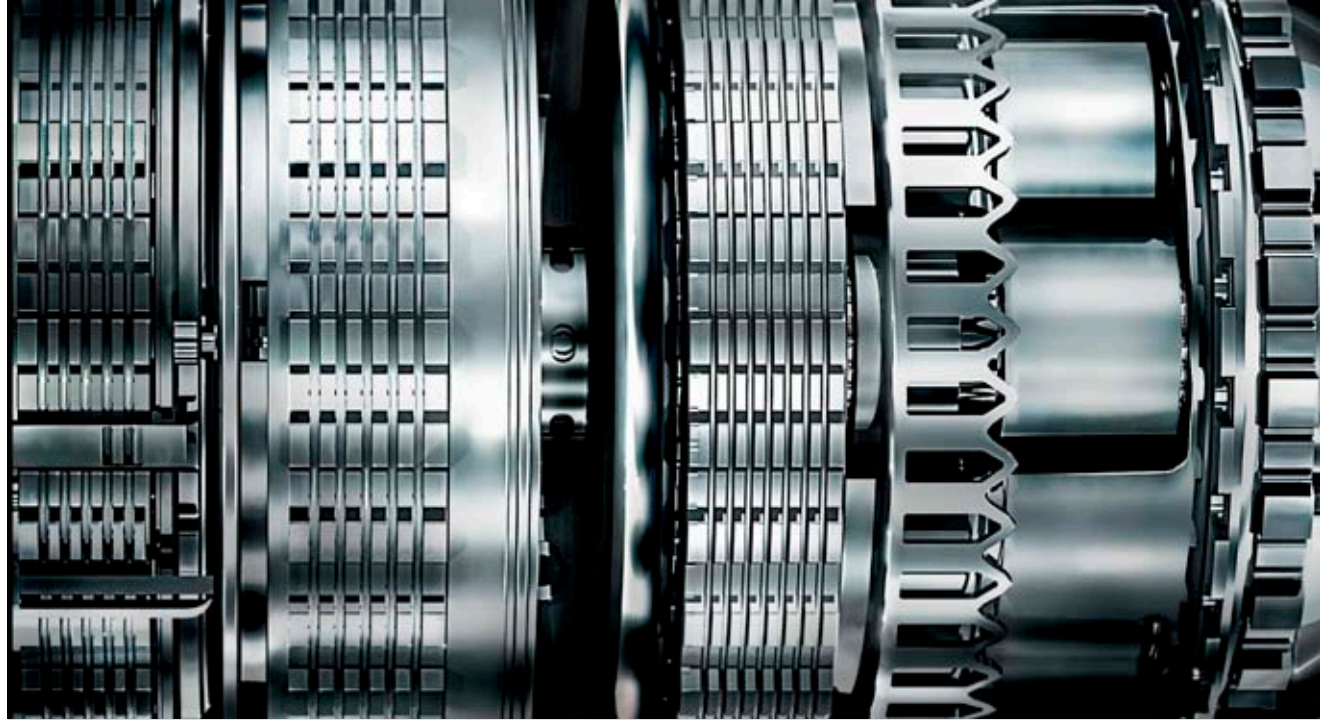
The supercharged version uses a rotor-type supercharger, driven from the crankshaft and with helical rotor gears for low noise and coated rotors for high efficiency. It develops 306kW, and up to 560Nm of torque, with at least 86 percent of that mighty torque peak available all the way from 2000rpm through to maximum engine speed. That is the beauty of mechanically-driven supercharging – massive torque and instant, linear responses.

The 152kW 2.7-litre 24-valve V6 turbodiesel combines ultra high-pressure common rail direct injection with multiple-phase piezo-electric injection control. The result is smoother, quieter delivery of power, improved fuel efficiency with lower emissions – including 7.5l/100km combined economy. Its four valves per cylinder, advanced combustion chamber shapes, twin variable-geometry turbochargers and sophisticated drive-by-wire throttle control mean massive flexibility,

instant response, and a diesel that lives up to the XF's looks. The 3.0-litre petrol V6 produces 175kW, with more than eighty percent of its peak torque spread across almost its whole speed range. Continuously variable camshaft phasing and variable geometry intakes speed responses and improve performance at all engine speeds. But the same features also reduce emissions, while class-leading torsional stiffness minimises noise and maximises reliability.







The XF's six-speed automatic transmission is also highly acclaimed.

A transmission with superb characteristics, also evolved from Jaguar's XK and XKR sports cars. A transmission whose exceptionally rapid fully adaptive shift system responds to both road conditions and the way the car is driven, to give the smoothest gear shifts and optimum performance, all the time. But even that is only the start of the story...

The XF's industry-leading JaguarDrive Selector™ adds another layer of driver-centred sophistication – precise and intuitive control by new generation shift-by-wire rather than mechanical commands. It offers fully automatic shifting in Drive or Sport modes, or for even greater driver involvement, one-touch manual selection through the XF's Jaguar Sequential Shift™

system using motor sport-style steering wheel mounted paddles. Deeper still, the selectable options of JaguarDrive Control™ interact with the XF's Dynamic Stability Control (DSC) system to open up a series of shift modes on demand – from tread-gently Winter mode to maximum involvement Dynamic mode exclusive to the XF SV8.



The brief was unequivocal – the XF had to drive as it looks.

It is brilliantly engineered, its chassis tuning is highly driver-centred, and its attention to dynamic detail superb. The XF's body structure is light but exceptionally rigid – with the strength to underpin outstanding safety credentials and the stiffness to carry a suspension whose balance of comfort and control was honed by thousands of miles of intensive development. For the SV8, that includes the adaptive damping strategy of Jaguar's Computer Active Technology Suspension (CATS™). For every XF it includes servotronic

variable ratio Power Assisted Steering – providing minimum parking effort at low speeds and maximum precision and feedback at higher speeds. Its tracks are wide, with powerful disc brakes all round. The XF's dynamic flavour combines the comfort and refinement of a luxury saloon with the grip, balance, responses and stability of a sports car. A dynamic character with genuine driver involvement, as far removed from the premium saloon crowd as the XF's striking design.





R

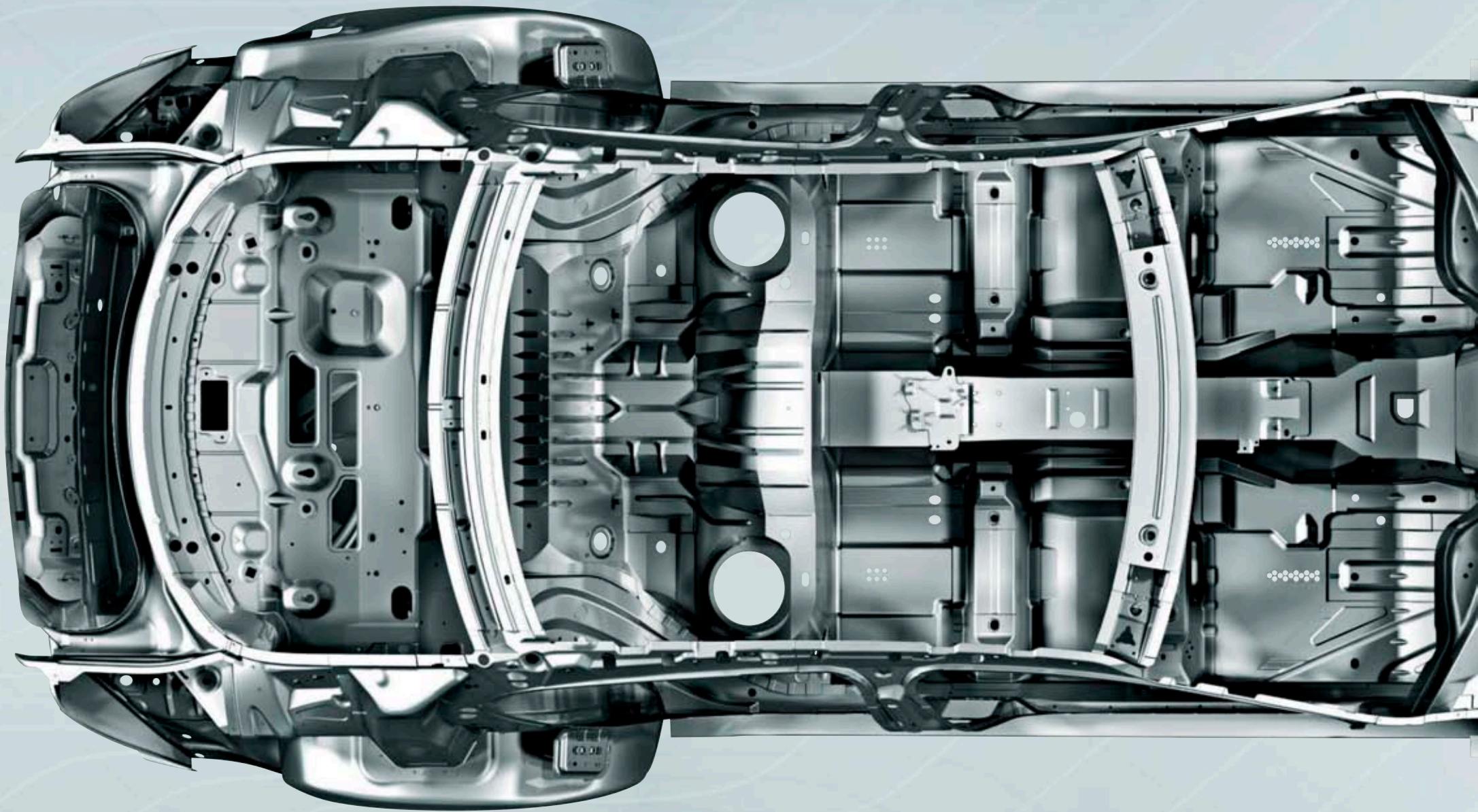
SUV8

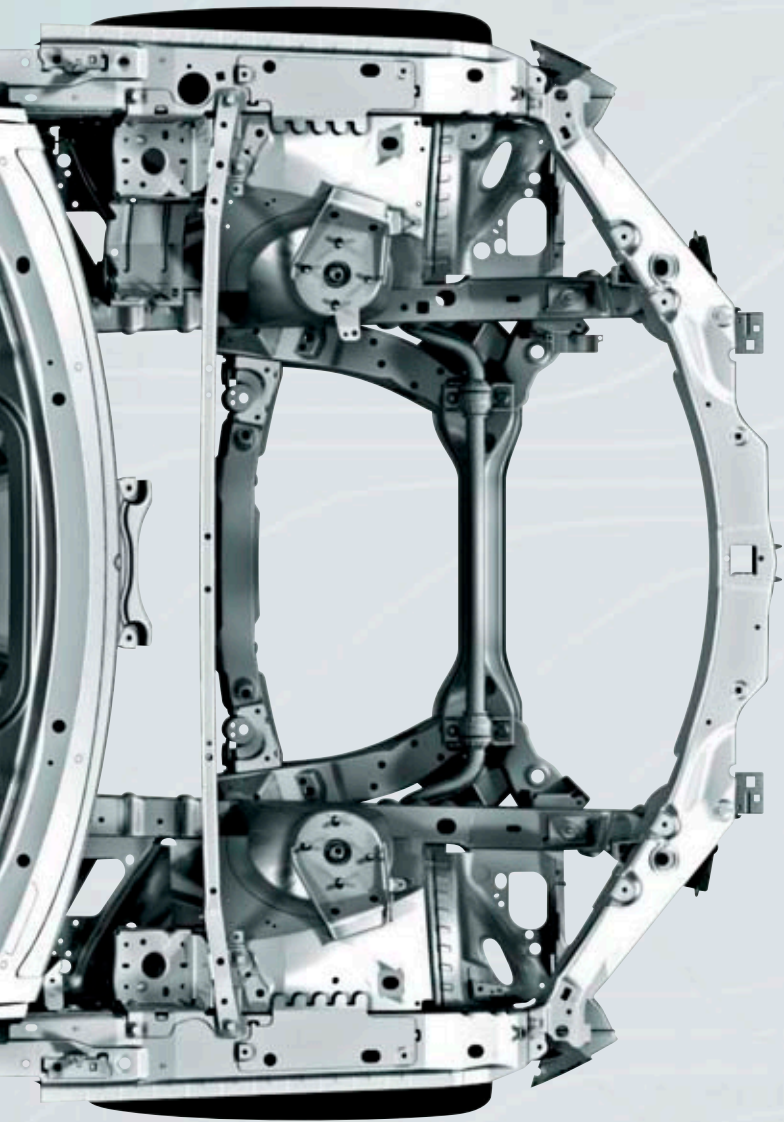


If sporting is one defining word for the XF; refined is another.

A stiff structure, smooth powertrains, careful attention to acoustic management – essential ingredients for outstanding quietness and comfort. Exceptional aerodynamics play their part, too, with low drag and low wind noise

hand in hand. At 50 km/h, on 18" wheels, the XF's interior noise level is a barely audible 65.6dB. And like the XK, the XF's V8 exhaust systems are tuned for an overtly sporty sound quality, just as the XF's looks promise.





Strength you can trust, from technology at the leading edge. The reinforced body shell uses new generation high-strength steels shaped by Computer Aided Design.

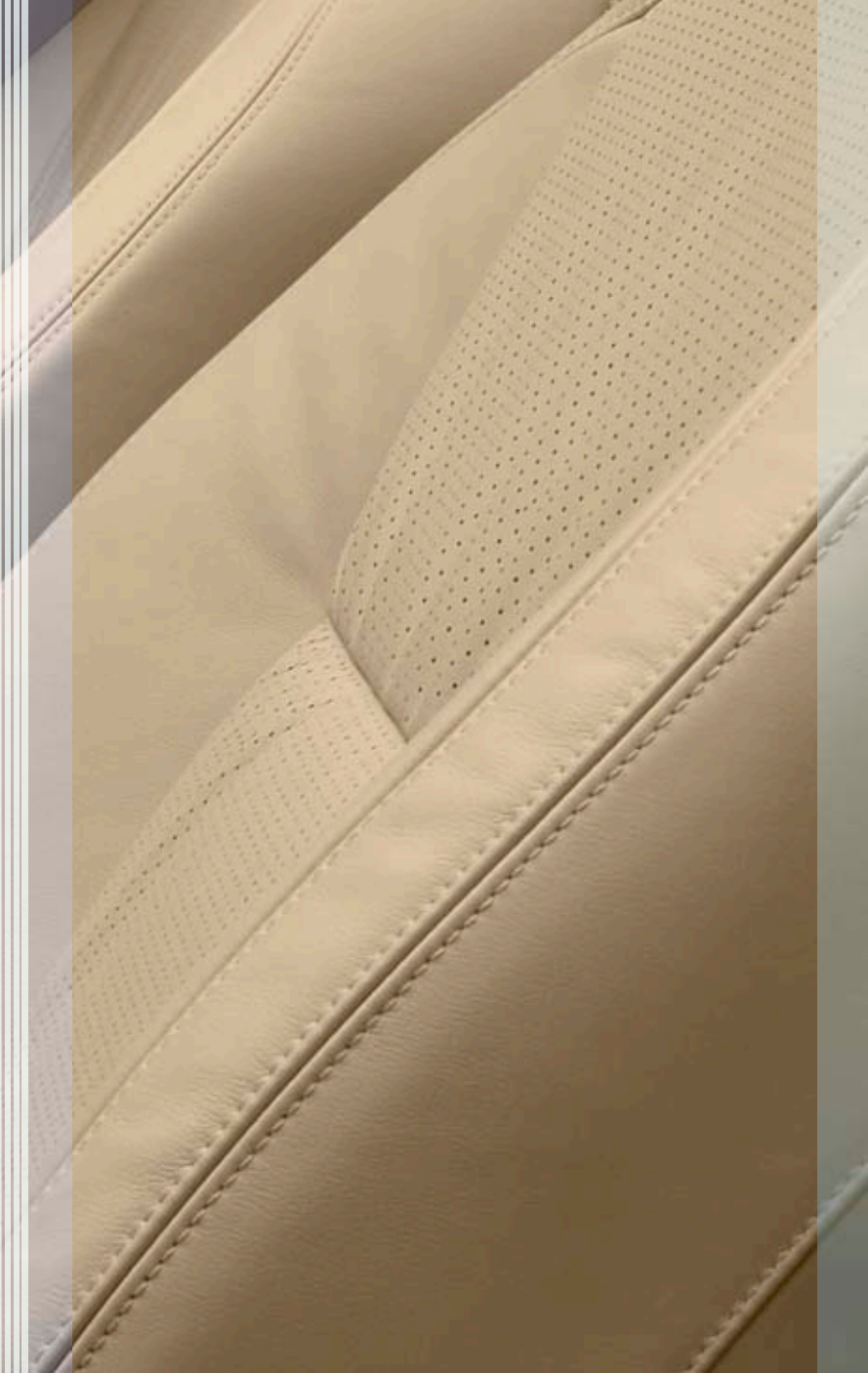
The XF was designed to provide high levels of safety for driver and passengers, and with its second generation Pedestrian Contact Sensing™ system, with automatically deployable bonnet, it can make life safer for those outside the car too. Sophisticated protection. Two-stage driver and front passenger airbags, side and curtain airbags, Seat Occupant Sensing systems to ensure the airbags work precisely and only as needed in every circumstance. The protection of an Anti-Whiplash System, built into the XF's front seats, and 'soft-landing' technology in the seat-belt retractors

to soften contact with the front airbags. Safety in motion, too. Safety rooted in superb handling, precise steering and powerful brakes – supported by systems that help prevent difficult conditions becoming dangerous ones. An intelligent approach to dynamics, acknowledging the protection of Emergency Brake Assist (EBA), Electronic Brake-force Distribution (EBD), ABS anti-lock braking, Traction Control, Cornering Brake Control (CBC), and Engine Drag Control. Systems that help the driver without diluting involvement. Systems designed to optimise braking effort and reduce

braking distances, without sacrificing control. Systems to help preserve traction and handling balance when road conditions deteriorate. Systems that pursue safety while underlining the XF's sporting flavour – like two-stage Dynamic Stability Control that combines Jaguar's on-off switchable DSC function, plus TracDSC, for a more dynamic driving style.

For more information on features, please refer to jaguar.com.au

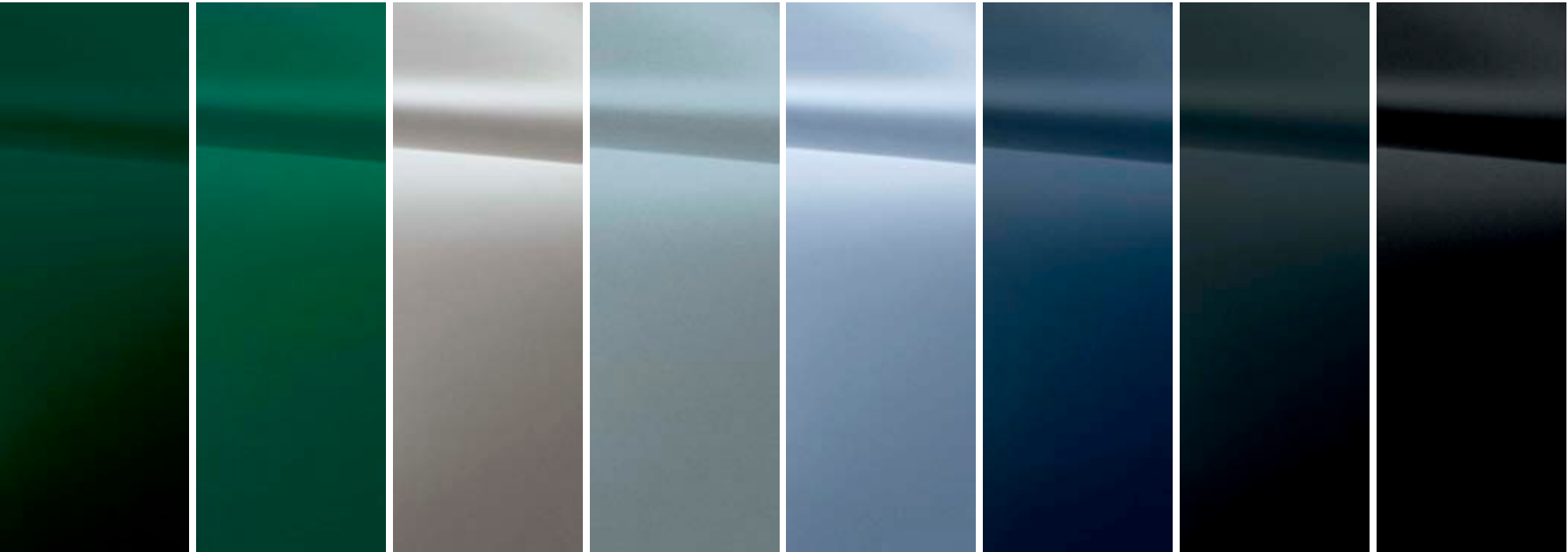




Jaguar knows that individuality and a creative mindset define the XF customer.

Starting with the availability of four engines and three key choices of trim and equipment level, the detailed specification of the XF is whatever you want it to be. The colour range, the choice of leathers and veneers, the exact style and size of alloy wheel – the look of your XF is your choice. And when it comes to equipment and accessories, that is your choice, too – literally from the seats you sit in to the sound system you listen to, from the way you use the space to the way you control specific features.

EXTERIOR COLOURS



Botanical Green*

Emerald Fire*

Vapour Grey*

Frost Blue*

Azure Blue*

Indigo*

Midnight* †

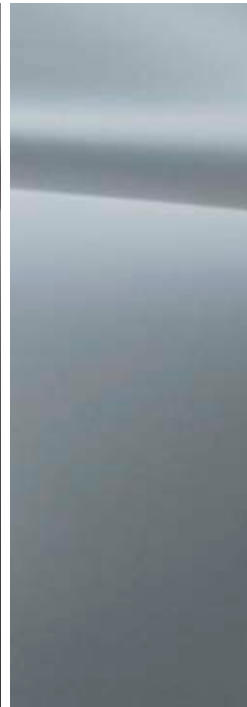
Ultimate Black* †



Ebony



Pearl Grey*



Lunar Grey*



Liquid Silver*



Porcelain



Winter Gold*



Radiance*



AURIGA 19" ALLOY WHEEL

CARELIA 19" ALLOY WHEEL



VENUS 18" ALLOY WHEEL





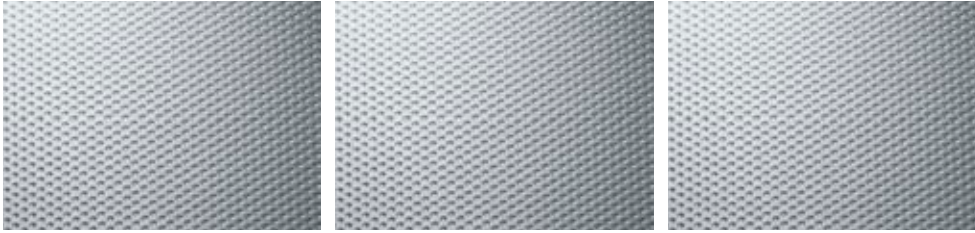
SELENA 20" ALLOY WHEEL



VOLANS 20" ALLOY WHEEL

Alloy wheel availability differs from market to market.
For full details please consult your price list, local dealer or visit jaguar.com.au.

INTERIOR FINISHERS



Aluminium with Satin American Walnut



Aluminium with Burr Walnut (gloss)



Aluminium with Rich Oak (gloss)

SEAT TRIM & UPPER FACIA COLOURS



Spice with warm Charcoal
and Spice contrast stitching

Ivory with Oyster

Champagne with Truffle

Dove with Warm Charcoal

Warm Charcoal with Warm Charcoal

DESIGNER'S CHOICE [△]

EXTERIOR COLOUR	LEATHER TRIM	UPPER FACIA	VENEER		
			Satin American Walnut	Burr Walnut (gloss)	Rich Oak (gloss)
BOTANICAL GREEN*	Ivory	Oyster	-	■	■
	Champagne	Truffle	■	■	■
	Warm Charcoal	Warm Charcoal	□	□	□
	Spice	Warm Charcoal	-	□	□
EMERALD FIRE*	Ivory	Oyster	-	■	■
	Champagne	Truffle	■	■	■
	Warm Charcoal	Warm Charcoal	□	□	□
	Spice	Warm Charcoal	-	□	□
VAPOUR GREY*	Ivory	Oyster	-	■	■
	Champagne	Truffle	□	□	□
	Warm Charcoal	Warm Charcoal	■	■	■
	Spice	Warm Charcoal	-	□	□
FROST BLUE*	Ivory	Oyster	-	■	■
	Dove	Warm Charcoal	□	□	□
	Warm Charcoal	Warm Charcoal	■	■	■
	Spice	Warm Charcoal	-	□	□

EXTERIOR COLOUR	LEATHER TRIM	UPPER FACIA	VENEER		
			Satin American Walnut	Burr Walnut (gloss)	Rich Oak (gloss)
AZURE BLUE*	Ivory	Oyster	-	□	□
	Dove	Warm Charcoal	■	■	■
	Warm Charcoal	Warm Charcoal	■	■	■
INDIGO*	Ivory	Oyster	-	■	■
	Dove	Warm Charcoal	■	■	■
	Champagne	Truffle	□	□	□
	Warm Charcoal	Warm Charcoal	□	□	□
MIDNIGHT*‡	Ivory	Oyster	-	□	□
	Dove	Warm Charcoal	■	■	■
	Champagne	Truffle	□	□	□
	Warm Charcoal	Warm Charcoal	■	■	■
ULTIMATE BLACK*†	Ivory	Warm Charcoal	-	□	■
	Dove	Oyster	-	□	□
	Champagne	Warm Charcoal	■	■	■
	Warm Charcoal	Truffle	□	□	□
	Warm Charcoal	Warm Charcoal	■	■	■
	Spice	Warm Charcoal	-	□	■

EXTERIOR COLOUR	LEATHER TRIM	UPPER FACIA	VENEER		
			Satin American Walnut	Burr Walnut (gloss)	Rich Oak (gloss)
EBONY	Ivory	Oyster	-	□	□
	Dove	Warm Charcoal	■	■	■
	Champagne	Truffle	□	□	□
	Warm Charcoal	Warm Charcoal	■	■	■
	Spice	Warm Charcoal	-	□	□
PEARL GREY*	Ivory	Oyster	-	■	■
	Dove	Warm Charcoal	□	□	□
	Champagne	Truffle	□	□	□
	Warm Charcoal	Warm Charcoal	■	■	■
	Spice	Warm Charcoal	-	□	□
LUNAR GREY*	Ivory	Oyster	-	□	□
	Dove	Warm Charcoal	■	■	■
	Warm Charcoal	Warm Charcoal	■	■	■
	Spice	Warm Charcoal	-	□	□
LIQUID SILVER*	Ivory	Oyster	-	□	□
	Dove	Warm Charcoal	■	■	■
	Champagne	Truffle	□	□	□
	Warm Charcoal	Warm Charcoal	■	■	■
	Spice	Warm Charcoal	-	□	■

EXTERIOR COLOUR	LEATHER TRIM	UPPER FACIA	VENEER		
			Satin American Walnut	Burr Walnut (gloss)	Rich Oak (gloss)
PORCELAIN	Ivory	Oyster	-	■	■
	Dove	Warm Charcoal	□	□	□
	Champagne	Truffle	□	□	□
	Warm Charcoal	Warm Charcoal	□	□	□
	Spice	Warm Charcoal	-	□	□
WINTER GOLD*	Ivory	Oyster	-	□	□
	Champagne	Truffle	■	■	■
	Warm Charcoal	Warm Charcoal	□	□	□
RADIANCE*	Ivory	Oyster	-	■	■
	Dove	Warm Charcoal	□	□	□
	Champagne	Truffle	■	■	■
	Warm Charcoal	Warm Charcoal	□	□	□
	Spice	Warm Charcoal	-	□	□

■ Designer's Choice □ Available - Not Available *Metallic Paint †Available until mid 2008. ‡Available from mid 2008.

△ Refer to Interior Themes to verify model availability.

INTERIOR THEMES

LUXURY 2.7D AND 3.0V6



BOND GRAIN LEATHER



SEAT TRIM & LOWER FACIA

Warm Charcoal*
Dove
Champagne

VENEER

Satin American Walnut*
or Burr Walnut
Satin American Walnut
or Burr Walnut
Satin American Walnut
or Burr Walnut

UPPER FACIA

Warm Charcoal*
Warm Charcoal
Truffle

PREMIUM LUXURY 4.2V8



SOFTGRAIN LEATHER



SEAT TRIM & LOWER FACIA

Champagne*
Ivory
Dove
Warm Charcoal

VENEER

Burr Walnut*
or Rich Oak
Burr Walnut
or Rich Oak
Burr Walnut
or Rich Oak
Burr Walnut
or Rich Oak

UPPER FACIA

Truffle*
Oyster
Warm Charcoal
Warm Charcoal

SV8



SOFTGRAIN LEATHER



SEAT TRIM & LOWER FACIA

- Spice*
- Ivory
- Champagne
- Warm Charcoal

VENEER

- Rich Oak*
or Burr Walnut
- Rich Oak
or Burr Walnut
- Rich Oak
or Burr Walnut
- Rich Oak
or Burr Walnut

UPPER FACIA

- Warm Charcoal with
Spice contrast stitching*
- Oyster
- Truffle
- Warm Charcoal

STANDARD FEATURES

MODELS AND ENGINES	LUXURY 2.7D/3.0 V6	PREMIUM LUXURY 4.2 V8 in addition to Luxury	SV8 4.2 S/C in addition to Luxury
TRANSMISSION, SUSPENSION AND BRAKES	<ul style="list-style-type: none"> ◦ 6-speed electronic automatic transmission with Jaguar Sequential Shift™ ◦ DSC (Dynamic Stability Control) with Trac DSC mode ◦ Traction Control ◦ JaguarDrive Selector™ ◦ JaguarDrive Control™ – Winter Mode ◦ Variable ratio speed sensitive power steering ◦ Electric Parking Brake (EPB) ◦ Vented Disc Brakes, front and rear 		<ul style="list-style-type: none"> ◦ Computer Active Technology Suspension (CATS™) ◦ JaguarDrive Control™ – Dynamic Mode
EXTERIOR	<ul style="list-style-type: none"> ◦ LED rear tail lamps ◦ Heated exterior mirrors with electric adjustment ◦ Rain sensing windscreen wipers ◦ Halogen headlamps with automatic on/off and manual levelling ◦ Parking aid with rear sensors (includes Touch-screen visual indicators) ◦ Bright side window surrounds ◦ Chrome grille surround with bright mesh grille 	<ul style="list-style-type: none"> ◦ Metallic paint ◦ Power folding, auto-dimming exterior mirrors with puddle lamps ◦ Bi-Xenon headlamps with integrated cornering lamps, headlamp washers and automatic levelling ◦ Parking Aid Pack with Rear Camera 	<ul style="list-style-type: none"> ◦ Metallic paint ◦ Power folding, auto-dimming exterior mirrors with puddle lamps ◦ Bi-Xenon headlamps with integrated cornering lamps, headlamp washers and automatic levelling ◦ Tyre Pressure Monitoring System (TPMS) ◦ Parking Aid Pack with Rear Camera
WHEELS	<ul style="list-style-type: none"> ◦ Venus 8.5J x 18" alloy wheels ◦ Alloy space saver spare wheel 	<ul style="list-style-type: none"> ◦ Auriga 8.5J x 19" alloy wheels 	<ul style="list-style-type: none"> ◦ Volans 8.5J x 20" (front) / 9.5J x 20" (rear) alloy wheels
INTERIOR	<ul style="list-style-type: none"> ◦ Bond Grain seats with leather seat facings (10/10 way) ◦ Memory function with 2 settings for driver's seat, exterior mirrors and steering column ◦ Folding 60/40 split rear seats ◦ Bond Grain stitched and tailored instrument panel and door top rolls ◦ Satin American Walnut veneer ◦ Leather 3-spoke steering wheel with Jaguar Sequential Shift™ paddles and remote controls for audio, cruise control, Bluetooth® telephone connectivity and (where fitted) JaguarVoice™ ◦ Jaguar Smart Key System™ with keyless start ◦ Cruise control with Automatic Speed Limiter (ASL) ◦ Steering column with electric adjustment for height and reach with entry and exit tilt-away ◦ Automatic climate control with air filtration and dual zone temperature control for driver and front passenger ◦ Manual dipping interior rear view mirror ◦ Interior mood lighting ◦ Front centre console storage compartment with auxiliary power socket ◦ Triple front and twin rear cup holders ◦ Front and rear electric windows with one-touch open/close and anti-trap ◦ Driver Information Centre with dual function trip computer ◦ JaguarSense™ 	<ul style="list-style-type: none"> ◦ Softgrain leather seats (10/10 way) ◦ Memory function with 2 settings for driver's seat, exterior mirrors and steering column ◦ Softgrain leather stitched and tailored instrument panel and door top rolls ◦ Burr Walnut veneer ◦ Jaguar Smart Key System™ with keyless entry ◦ Auto-dimming interior rear view mirror ◦ Carpet mat set 	<ul style="list-style-type: none"> ◦ Softgrain leather seats (16/12 way) ◦ Front seats - active ventilated, heated and cooled ◦ Memory function with 2 settings for driver's seat, exterior mirrors and steering column ◦ Softgrain leather stitched and tailored instrument panel and door top rolls ◦ Rich Oak veneer ◦ Jaguar Smart Key System™ with keyless entry ◦ Auto-dimming interior rear view mirror ◦ Premium carpet mat set
AUDIO AND COMMUNICATIONS	<ul style="list-style-type: none"> ◦ Jaguar sound system with in-dash 6-disc CD player ◦ 3.5 mm Stereo auxiliary input socket ◦ 7 inch full colour Touch-screen ◦ Navigation system ◦ Bluetooth® telephone connectivity 	<ul style="list-style-type: none"> ◦ Jaguar 320W premium sound system with in-dash 6-disc CD player 	<ul style="list-style-type: none"> ◦ Bowers & Wilkins 440W surround sound system* ◦ Television with digital/analogue tuner ◦ JaguarVoice™

Please refer to the glossary for a more detailed description of features.

OPTIONAL FEATURES

MODELS AND ENGINES	LUXURY 2.7D/3.0 V6	PREMIUM LUXURY 4.2 V8	SV8 4.2 S/C
EXTERIOR	<ul style="list-style-type: none"> ◦ Metallic paint ◦ Electric glass sunroof with tilt/slide one touch operation ◦ Tyre Pressure Monitoring System (TPMS) 	<ul style="list-style-type: none"> ◦ Electric glass sunroof with tilt/slide one touch operation ◦ Tyre Pressure Monitoring System (TPMS) ◦ Heated windscreen with timer 	<ul style="list-style-type: none"> ◦ Electric glass sunroof with tilt/slide one touch operation ◦ Heated windscreen with timer
WHEELS	<ul style="list-style-type: none"> ◦ Auriga 8.5J x 19" alloy wheels ◦ Carelia 8.5J x 19" alloy wheels ◦ Selena 8.5J x 20" alloy wheels 	<ul style="list-style-type: none"> ◦ Carelia 8.5J x 19" alloy wheels ◦ Selena 8.5J x 20" alloy wheels 	
INTERIOR	<ul style="list-style-type: none"> ◦ Burr Walnut veneer ◦ Automatic climate control - auto recirculation ◦ Jaguar Smart Key System™ with keyless entry ◦ Adaptive Cruise Control (ACC) with Forward Alert (N/A For 2.7D) ◦ Electric rear window sunblind ◦ Carpet mat set 	<ul style="list-style-type: none"> ◦ Rich Oak veneer ◦ Automatic climate control - auto recirculation ◦ Adaptive Cruise Control (ACC) with Forward Alert ◦ Electric rear window sunblind ◦ Blind Spot Monitor 	<ul style="list-style-type: none"> ◦ Burr Walnut veneer ◦ Heated leather steering wheel ◦ Automatic climate control - auto recirculation ◦ Adaptive Cruise Control (ACC) with Forward Alert ◦ Electric rear window sunblind ◦ Blind Spot Monitor
AUDIO AND COMMUNICATIONS	<ul style="list-style-type: none"> ◦ Jaguar 320W sound system with in-dash 6-disc CD player* ◦ Bowers & Wilkins 440W surround sound system ◦ In-dash single CD player with Portable Audio Interface (in lieu of in-dash 6-disc player)* ◦ JaguarVoice™ ◦ Television with digital/analogue tuner 	<ul style="list-style-type: none"> ◦ Bowers & Wilkins 440W surround sound system* ◦ In-dash single CD player with Portable Audio Interface (in lieu of in-dash 6-disc player)* ◦ JaguarVoice™ ◦ Television with digital/analogue tuner 	
PACKS	<ul style="list-style-type: none"> ◦ Mirror Pack ◦ Mirror Pack with Blind Spot Monitor ◦ Parking Aid Pack with Rear Camera ◦ Visibility Pack ◦ Visibility Pack with Bi-Xenon headlamps ◦ Luxury Winter Comfort Memory Pack 	<ul style="list-style-type: none"> ◦ All Season Comfort Pack ◦ Premium Luxury Winter Comfort Pack 	

Please refer to the glossary for a more detailed description of features.

*In-dash single CD player with Portable Audio Interface in lieu of in-dash 6-disc player available only with Jaguar sound system or Jaguar 320W premium sound system.

SAFETY AS STANDARD

Airbags, front and side (driver and front passenger)
Side curtain airbags
Anti-lock Braking System (ABS)
Pedestrian Contact Sensing™ – automatically deployable bonnet system
Front seat whiplash reduction system
Front and rear seat belts pre-tensioners
High level rear stop light
Cornering Brake Control (CBC)
Emergency Brake Assist (EBA)

SECURITY AS STANDARD

Security system with remote control central locking, deadlocking, drive-away locking and perimetric alarm with vehicle immobiliser
Valet function

GLOSSARY

CATS™ (Computer Active Technology Suspension) – Co-ordinates the best possible balance between ride and handling by analysing road conditions and making up to 1,000 adjustments every second to the suspension settings via electronically controlled dampers.

DSC (Dynamic Stability Control) – Intervenes in demanding driving situations by applying braking to individual wheels and reducing engine torque.

Trac DSC mode – Provides a higher intervention threshold for the more enthusiastic driver.

Bond Grain seats with leather seat facings (10/10 way) – Driver's and passenger's electric adjustment including fore/aft, height, cushion tilt, recline and 2-way lumbar support.

Softgrain leather seats (10/10 way) – Driver's and passenger's electric adjustment including fore/aft, height, cushion tilt, recline and 2-way lumbar support.

Softgrain leather seats (16/12 way) – Driver's electric adjustment including fore/aft, height, cushion tilt, recline, headrest height, 4-way lumbar support, cushion length and passenger's electric adjustment including fore/aft, height, cushion tilt, recline, headrest height and 2-way lumbar support.

Navigation system ⁽¹⁾ – With DVD mapping, destination entry on the move, voice guidance.

Jaguar sound system – 140W system with AM/FM radio featuring EON, RDS, PTY, TA and 6-disc in-dash CD player with automatic volume control, WMA, MP3 compatibility and 8 speakers.

Jaguar 320W premium sound system – With AM/FM radio featuring EON, RDS, PTY, TA and 6-disc in-dash CD player with automatic volume control, WMA, MP3 compatibility and 8 speakers plus Sub-Woofer.

Bowers & Wilkins 440W surround sound system – With AM/FM radio featuring EON, RDS, PTY, TA and 6-disc in-dash CD player with automatic volume control, WMA, MP3 compatibility, portable audio interface, a remote amplifier with Dolby® Pro Logic® II surround sound and 13 speakers plus Sub-Woofer.

Windows Media® Audio (WMA) and MP3 compatibility – Enables the CD player to play CDs which contain WMA and MP3 files.

Bluetooth® telephone connectivity ⁽²⁾ – A Bluetooth® equipped Jaguar, enables hands-free use of your mobile phone at any time when the phone is in the car. Bluetooth® is compatible with a selected range of mobile phones from a number of different manufacturers.

JaguarVoice™ – Voice control of telephone, navigation system and Touch-screen displays with note pad facility.

Portable Audio Interface ⁽³⁾ – Allows the connection of an iPod, MP3 player or a USB Mass Storage Device to the in-car sound system and control via the 7 inch Touch-screen.

7 inch full colour Touch-screen – Display with controls for audio, climate control, Bluetooth® telephone connectivity and navigation.

Mirror Pack – Heated exterior mirrors with electric adjustment, power folding, puddle lamps and auto-dimming exterior and interior rear view mirror.

Mirror Pack with Blind Spot Monitor – As Mirror Pack plus Blind Spot Monitor.

Parking Aid Pack with Rear Camera – Parking aid with front sensors (includes Touch-screen visual indicator) and rear camera parking aid.

Luxury Winter Comfort Memory Pack – Bond Grain seats with leather seat facings (10/10 way), with 3-stage heated front seats and heated steering wheel plus memory function with 2 settings for driver's seat, exterior mirrors and steering column.

Premium Luxury Winter Comfort Pack – Softgrain leather seats (10/10 way) with 3-stage heated front seats and heated steering wheel.

All Seasons Comfort Pack – Softgrain leather seats (10/10 way), with active ventilated heated and cooled front seats. Memory function with 2 position driver memory, exterior mirrors and steering column and heated steering wheel.

Visibility Pack – Heated windscreen with timer and headlamp washers.

Visibility Pack with Bi-Xenon Headlamps – Heated windscreen with timer and Bi-Xenon headlamps with integrated cornering lamps, headlamp washers and automatic levelling.

JaguarSense™ – An electronic control system that operates the front overhead console lights and opening of the glove box by light touch.

⁽¹⁾ The navigation system must always be used in conditions that will not affect the driver's ability to drive safely or affect the safety of other road users.

⁽²⁾ The Bluetooth® word mark and logos are owned by the Bluetooth SIG, Inc. and any use of such marks by Jaguar Cars Limited is under license.

⁽³⁾ iPod is a trademark of Apple Inc., registered in the U.S. and other countries.

TECHNICAL SPECIFICATIONS

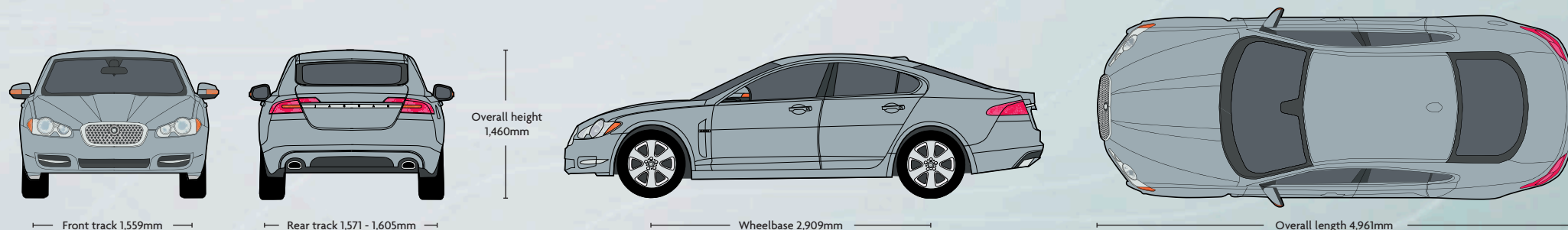
ENGINES	2.7 Litre V6 Diesel	3.0 Litre V6 Petrol	4.2 Litre V8 Petrol	4.2 Litre V8 Petrol Supercharged
Cylinders/Valves per Cylinder	6/4	6/4	8/4	8/4
Bore/Stroke mm	81.0/88.0	89.0/79.5	86.0/90.3	86.0/90.3
Capacity cc	2,720	2,967	4,196	4,196
Maximum power EEC - kW @rev/min	152 4,000	175 6,800	219 6,000	306 6,250
Maximum torque EEC - Nm @rev/min	435 1,900	293 4,100	411 4,100	560 4,000
Compression ratio: 1	17.3	10.5	11.0	9.1
Transmission	6-speed automatic	6-speed automatic	6-speed automatic	6-speed automatic
PERFORMANCE (manufacturer's estimate)				
Acceleration 0 - 100 km/h - sec	8.2	8.3	6.5	5.4
Top speed km/h	229	237	250 Limited	250 Limited
FUEL CONSUMPTION⁽¹⁾				
Urban l/100km	10.4	15.8	17.3	18.7
Extra Urban l/100km	5.8	7.5	7.8	9.1
Combined l/100km	7.5	10.5	11.1	12.6
Carbon dioxide emissions g/km	199	249	264	299
Tank capacity - ltr approx with 5.5 ltr res.	69.5	69.5	69.5	69.5
WEIGHT⁽²⁾				
Weight kg	1,771	1,679	1,749	1,842
Gross vehicle weight kg	2,310	2,215	2,270	2,330

Permitted trailer load, unbraked – 750kg⁽³⁾ Permitted trailer load, braked – 1850kg⁽³⁾ Permitted towbar download 75kg⁽³⁾ Turning circle – 11.48m
 Boot volume with space saver – 500litres (VDA) Boot volume with rear seats folded – 923litres (VDA)

(1) The fuel consumption figures were obtained in tests carried out in line with Australian ADR 81/01 test procedures. These figures are correct at the time of going to press.

(2) Please consult your dealer for details of charges associated with option fitment. Weights reflect vehicles to standard specifications. Optional extras increase weight.

(3) Not applicable on 4.2 Litre V8 Petrol Supercharged. Figures quoted are up to 12% gradient.



Overall width with mirrors folded in 1,877mm Overall width inc. mirrors 2,053mm Internal width: Front 1,444mm and Rear 1,432mm Internal headroom: Front 990mm Rear 956mm (Front 943mm Rear 954mm when sunroof is fitted)



Every Jaguar Accessory follows the same flair for design and same respect for quality as the car it is created for – they are simply your own finishing touch, provided by Jaguar.

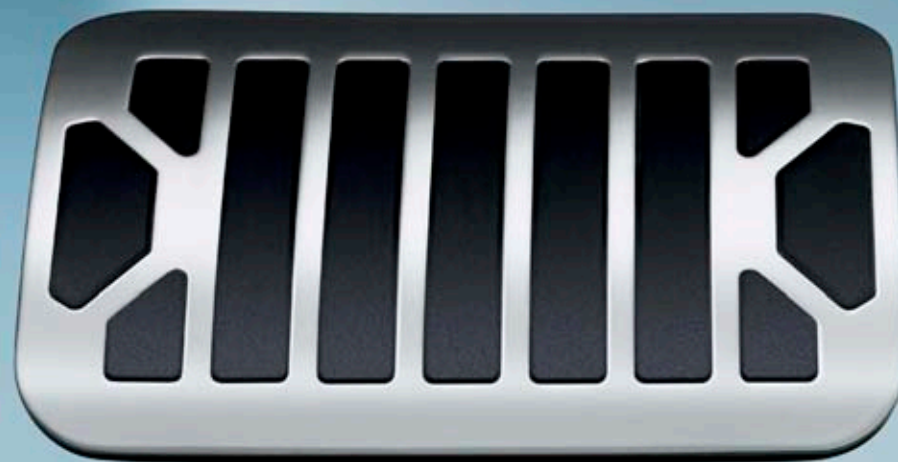


Choosing side power vents with a chrome finish, or Jaguar's boot lid spoiler, subtly change the exterior focus of the XF without compromising its athletic style.





Luxury. Sporting. Individual. Enhancing. Complementing.
Subtle. Yours. Jaguar Accessories mean any and all of those.



Jaguar Accessories are about living with your car – about expressing your own taste and lifestyle. You might add the sporting bright-finished pedals, or illuminated sill tread plates highlighted by soft Phosphor blue lighting. Your lifestyle might require

boot stowage, or a luggage compartment finisher or the Rear Screen Connectivity System, with twin LCD screens to support your DVD player, camcorder, games player, iPod or MP3 device through the rear console.



JAGUAR

The XF ownership experience. Service, assurance, and peace of mind are all part of the pride of owning your XF.

THE JAGUAR ACCESSORY RANGE

Enabling you to personalise your car, to create a driving experience that is even more individually rewarding. All Jaguar accessories are tested rigorously for safety and durability in the most arduous of climates and conditions. A comprehensive range of styling options, interior and exterior accessories, enabling you to tailor your XF to suit your personal style.

BECAUSE ONLY THE BEST WILL DO

An official Jaguar dealer can ensure that Jaguar trained, specialist technicians, with access to the full range of Jaguar approved parts and tools, will always be on hand to guarantee that every fitting, or repair, is carried out exactly the way Jaguar intended. Your Jaguar dealer can also supply and fit Jaguar approved accessories to personalise and add to the practicality and style of your XF model.

JAGUAR ROADSIDE ASSISTANCE

All Jaguar vehicles purchased in Australia benefit from complimentary Jaguar Roadside Assistance service for the length of the new car warranty. This covers you Australia-wide 24 hours per day, every day.

WARRANTY

3 year /100,000 kilometre* warranty together with a 3 year unlimited kilometre Paint Surface Warranty and 6 year unlimited kilometre Corrosion (Perforation) Warranty.

JAGUAR MAGAZINE

From travel to fashion, chic to champagne, Jaguar magazine is an owner's publication like no other. Jaguar articles touch on everything from exclusive holiday destinations to fine wines, art to architecture. As well as features and interviews bringing all the latest news from the world of XF and Jaguar.

JAGUAR.COM.AU

Dedicated to you and your XF, the interactive jaguar.com.au website features helpful tools such as the dealer locator, model specifications - allowing you to see the car tailored to your specification and colour - and price lists; the latest information on all the Jaguar models and a fascinating look into the passion and legacy that infuse the Jaguar name.

JAGUAR FINANCIAL SERVICES

Whether your requirements are business or personal, Jaguar Financial Services offers maximum choice and flexibility with a wide range of financial and insurance plans tailored to your needs.

* Whichever occurs first



IMPORTANT NOTICE

Jaguar Cars Limited is constantly seeking ways to improve the specification, design and production of its vehicles and alterations take place continually. Whilst every effort is made to produce up-to-date literature, this brochure should not be regarded as an infallible guide to current specifications, nor does it constitute an offer for the sale of any particular vehicle. Distributors and dealers are not agents of Jaguar Cars Limited and have absolutely no authority to bind Jaguar Cars Limited by any express or implied undertaking or representation. Illustrations in this brochure may include optional extras and/or options/specifications not available for the Australian market. Please check availability with your Jaguar Dealer or Jaguar Australia.

Comparisons are based on manufacturer's own data and testing.

ENVIRONMENTAL NOTICE

Jaguar Cars Limited has a vision of being amongst the world's leading companies in demonstrating progress towards sustainability. We aim to do this by contributing to a better quality of life, with corporate citizenship at the very heart of our company, and by reducing our environmental footprint through innovative design and manufacturing, minimizing resource and energy use. Environmental responsibility is a core value in Jaguar, and it is our policy to continually improve our environmental standards in all areas of business activity.

This brochure is produced using paper stock, which contains 50% recycled post consumer waste and controlled wood material from well managed forests. Pulps used are Elemental Chlorine Free.



ILLUSTRATIONS

Page 3: XF SV8 in Liquid Silver with Volans alloy wheels

Page 7: XF SV8 in Liquid Silver with Volans alloy wheels

Page 11: XF SV8 with Warm Charcoal interior and Rich Oak veneer

Page 12: XF Premium Luxury with Ivory and Oyster interior and Burr Walnut veneer

Page 14: XF Premium Luxury with Ivory and Oyster interior and Burr Walnut veneer

Page 16: XF SV8 in Liquid Silver with Volans alloy wheels

Page 17: XF Luxury with Dove and Warm Charcoal interior and Satin American Walnut veneer

Page 23: XF Premium Luxury in Liquid Silver with optional Auriga alloy wheels

Page 24: XF Luxury in Liquid Silver with optional Selena alloy wheels

Page 27: XF SV8 in Liquid Silver with Volans alloy wheels

Jaguar Australia, Locked Bag 2213

North Ryde NSW 1670

Phone: 1800 450 683 or 02 9020 1400 Fax: 02 9020 1794

jaguar.com.au

A division of Premier Automotive Group

Australia Pty Limited A.C.N 004 352 238

Printed in England JLM/37/02/30/09






JAGUAR