



THE XF COLLECTION

JAGUAR





The Jaguar XF fuses sports car styling and performance with the refinement, features and space of a luxury saloon.

DESIGN	4
PERFORMANCE	12
CRAFTSMANSHIP	22
TECHNOLOGY	26
THE XF COLLECTION	34
SPECIFICATION	56



## DESIGN

Some cars are built. Some are engineered. A Jaguar is created. A rare blend of art and performance, science and beauty.

You see it in the dynamic face of the Jaguar XF. With its powerful mesh grille and swept back headlamps. You see it in its profile. Just gaze at the dramatic sweep of the roof and the curve of its side window frames highlighting the XF's stunning coupé lines.

At Jaguar, designers and engineers work side-by-side to develop the perfect balance of seductive design and exhilarating performance. As a result, in the XF, design integrates seamlessly with advanced engineering, creating inspired solutions to complex, technical challenges.

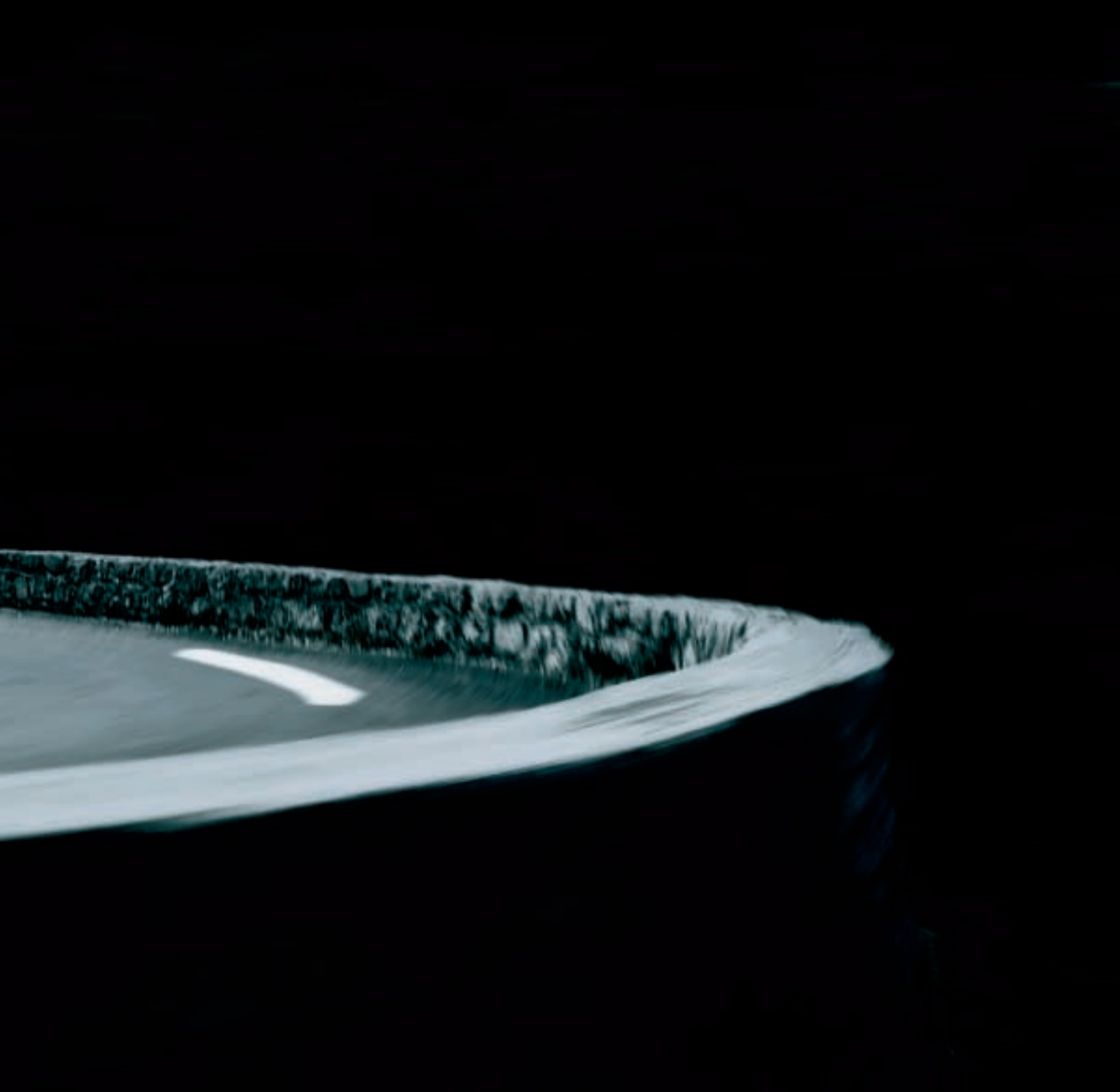
When our engineers required an even lower coefficient of drag and more rear downforce, the design team responded with sculpted metal that improved high-speed stability. It's the kind of single-minded attention to design detail, the pursuit of engineering excellence, that helps the XF set a benchmark in quality and craftsmanship. With the XF, Jaguar is redefining the world's perception of a sports saloon.

















THE START BUTTON PULSES.  
THE JAGUARDRIVE SELECTOR™  
RISES. AIR VENTS ROTATE. THIS IS  
THE THEATRE OF FIRING UP THE XF.







$C_d$   
0.29

THE BENEFITS OF ADVANCED  
AERODYNAMIC DESIGN  
EFFICIENCY: REDUCED WIND  
RESISTANCE, ENHANCED  
STABILITY AT SPEED AND  
WHISPER QUIET WIND NOISE.





## PERFORMANCE

Think of it as power and performance redefined. A highly advanced 3.0 Litre twin-turbo Diesel, a 3.0 Litre V6 and two 5.0 Litre V8 Petrol engines deliver an exhilarating drive.

The numbers are simply extraordinary. The high performance 3.0 Litre Diesel S delivers 202kW and a massive 600Nm. For refined, muscular V6 power, the XF's compact, all-aluminium 3.0 Litre Petrol with Variable Cam Phasing, delivers an impressive 175kW and 293Nm of torque – more than 80 per cent of which is available below 1,500rpm for eager, athletic performance. Then there's the direct-injection 5.0 Litre V8 which takes the XF's performance even higher. Available with 283kW or in supercharged form where it produces a remarkable 375kW – enough to launch the XFR from zero to 100km/h in 4.9 seconds. And with its semi-active exhaust, the XFR produces the kind of pulse-racing growl to match its stellar performance.

All four of these remarkable engines, deliver their exhilarating performance through the XF's acclaimed 6-speed electronic automatic transmission. And to provide true driver involvement, the 6-speed features the lightning-quick Jaguar Sequential Shift™ system with its steering-wheel-mounted paddle shifters. No matter which powertrain you chose, you're guaranteed a driving experience designed to be exceptional.



RECHARGED

200

220

240

260

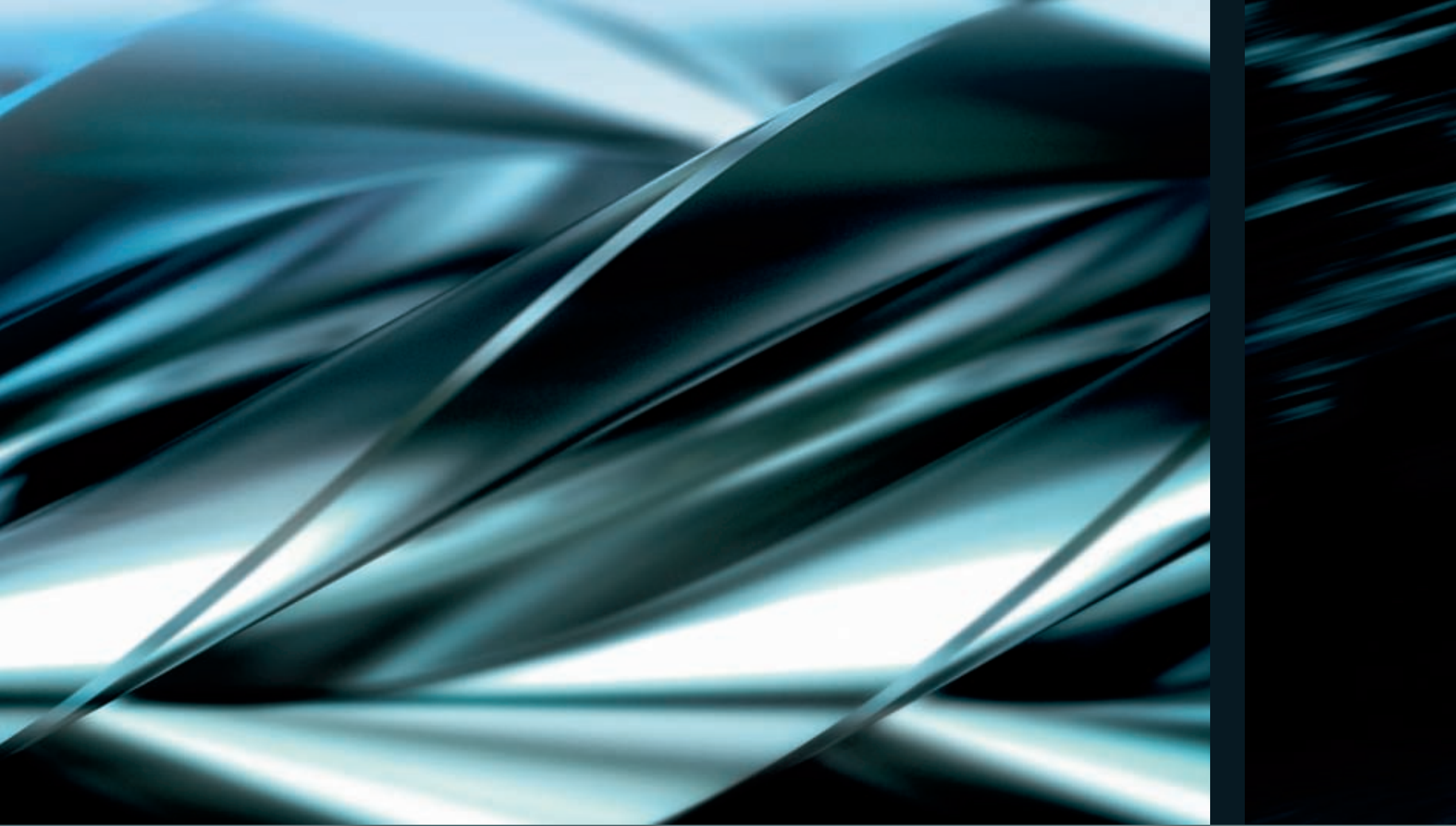






5.0/V8/SC/0-100/4.9

XFR 5.0 LITRE V8 SUPERCHARGED 0-100KM/H 4.9 SECONDS

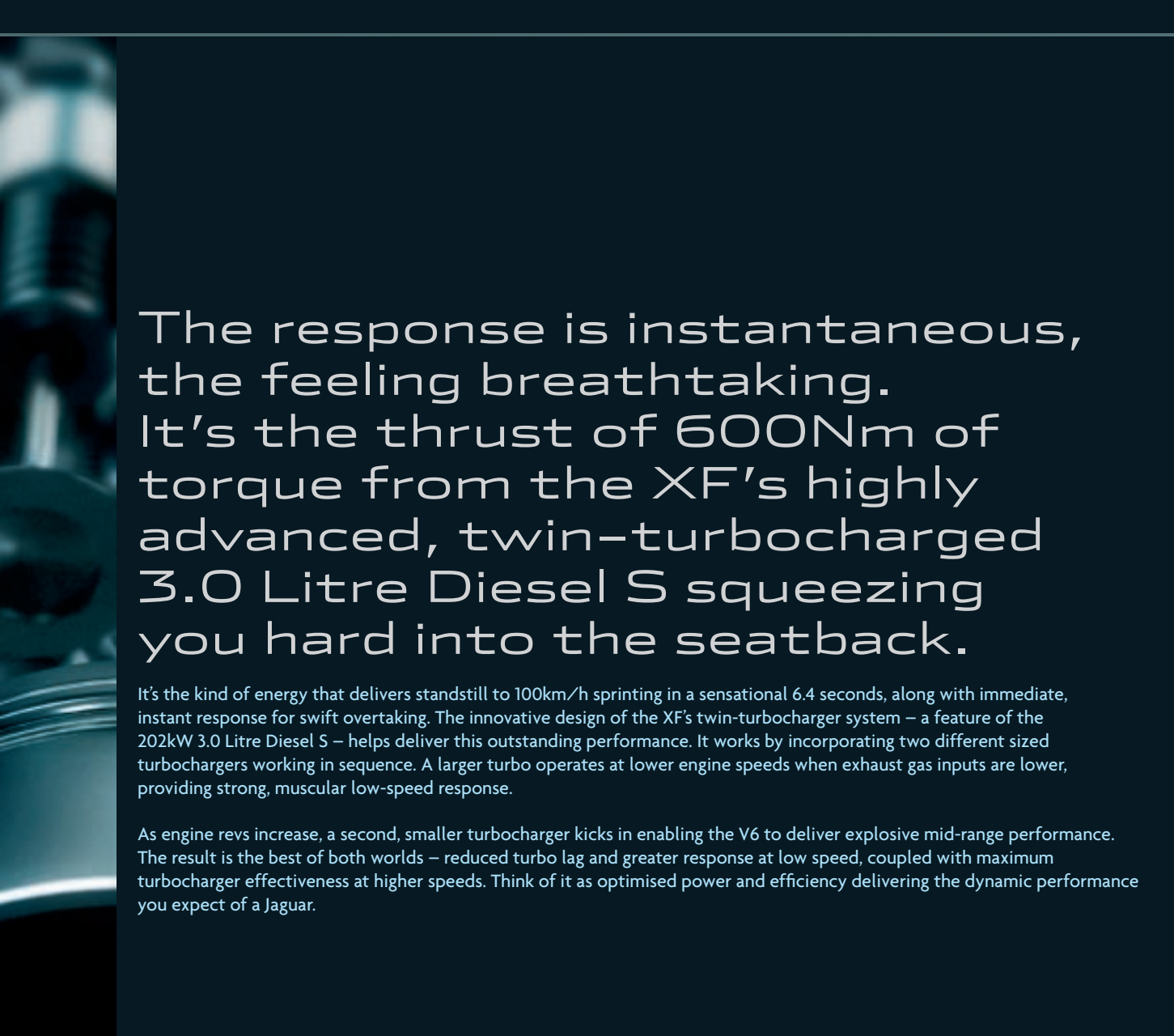






XFR 5.0 LITRE V8 SUPERCHARGED DIRECT INJECTION 375KW 625NM TORQUE





The response is instantaneous,  
the feeling breathtaking.  
It's the thrust of 600Nm of  
torque from the XF's highly  
advanced, twin-turbocharged  
3.0 Litre Diesel S squeezing  
you hard into the seatback.

It's the kind of energy that delivers standstill to 100km/h sprinting in a sensational 6.4 seconds, along with immediate, instant response for swift overtaking. The innovative design of the XF's twin-turbocharger system – a feature of the 202kW 3.0 Litre Diesel S – helps deliver this outstanding performance. It works by incorporating two different sized turbochargers working in sequence. A larger turbo operates at lower engine speeds when exhaust gas inputs are lower, providing strong, muscular low-speed response.

As engine revs increase, a second, smaller turbocharger kicks in enabling the V6 to deliver explosive mid-range performance. The result is the best of both worlds – reduced turbo lag and greater response at low speed, coupled with maximum turbocharger effectiveness at higher speeds. Think of it as optimised power and efficiency delivering the dynamic performance you expect of a Jaguar.





3.0 LITRE DIESELS 0-100/6.4 6.8L/100KM





CO<sub>2</sub> 179g/km



## CRAFTSMANSHIP

The XF defines sporting luxury. It's the heady combination of exquisite craftsmanship and luxurious finishes – rich wood veneers with aluminium and supple leather – executed in a thoroughly fresh, contemporary way.

You see craftsmanship in the elegant, hand-crafted twin-needle stitching on the XF's dash top, a feature more normally reserved for the finest tailoring and bespoke trimming. You see it in the gorgeous veneers; the soft matt Satin American Walnut, the modern, straight-grained Rich Oak and the traditional, glossy Burr Walnut. You see it in the gorgeous Figured Ebony for the Portfolio. And the stunning Dark Oak veneer that comes with the supercharged XFR.

You'll also see Jaguar craftsmanship in features like the XF's dramatic centre console. To give the top of the console the look of being fashioned from a single piece of wood, our designers campaigned for the doors covering the two cupholders to fit pinch-tight, with virtually no visible openings. They challenged the craftsmen at Jaguar's legendary wood shop to create a 'razor-edge' look with surgically-precise, vertical cuts. You'll see, the results are astonishing. And craftsmanship meets technology in features like the cylindrical JaguarDrive Selector™. It's made from cast alloy to ensure it feels solid, substantial, refined in the driver's hand.

Choice, craftsmanship and bespoke luxury reach a pinnacle in the XF Portfolio range. Its long list of luxury features includes the richest Softgrain leather for the seats and doors; twin-stitched, contrast-colour leather for the dash top; warm Suedecloth headlining, and premium carpet mats with contrast edging. The XF is Sporting Luxury brought to life.







PHOSPHOR BLUE MOOD LIGHTING  
FOR THE CENTRE CONSOLE,  
INSTRUMENTS AND DOORS  
CREATES A COOL, CONTEMPORARY  
FEEL TO THE XF'S CABIN.





Navigation screen showing a map with a red route. The destination is labeled "GUAJ ALBERTO SOLANO". The screen also displays "1000 pm", "Set Destination", and "POI".

Row of five illuminated touch buttons: lock, unlock, hazard lights, trunk, and power windows.

Music controls including "MUSIC", "SOUND", and "SOURCE" buttons, along with volume and track selection knobs.

Climate controls including "OFF", "F", "R", "AUTO", and "ON" buttons.

Handbrake and gear selector area with illuminated touch controls.

Instrument cluster showing a speedometer with markings up to 220 km/h and a gear selector display with "P R N D S".







## TECHNOLOGY

Intuitive design is about using advanced technologies to empower the driver, not to over-power. It's about creating a driving experience that excites and exhilarates.

A touch is all it takes. No buttons. No miniscule keypads. The XF's crystal-clear 7-inch full colour Touch-screen sets the standard for simple, logical, intuitive control. Its menu-based system offers simple operation of many of the car's key interior functions – climate control, entertainment, satellite navigation, Bluetooth® telephone connectivity, even the settings on your iPod®. To make a selection, simply touch the screen. If that wasn't easy enough, optional JaguarVoice™ enables many of the key actions to be voice-activated. Just touch the press-to-talk button on the steering wheel and speak the command.

For technology that provides real peace of mind, look no further than Jaguar's remarkable, optional radar-based Blind Spot Monitor that is designed to flash a warning if it senses a vehicle hidden in your blind spot. Then there are the innovative, intuitive technologies designed to enhance and heighten the pure joy of driving the XF. Like JaguarDrive Control™ that offers the choice of Drive or Sport modes for the XF's 6-speed electronic automatic transmission. Switch to Sport and it will hold the lower gears longer, kick down more readily, send your pulse racing.

To heighten the thrill of driving the supercharged XFR even further, the remarkable Adaptive Dynamics system monitors body movement 100 times every second to deliver the seemingly impossible – a comfortable, luxury car ride coupled with true, hard-edged sports car handling. And for the ultimate in cornering ability, the XFR's electronic Active Differential Control provides enhanced traction to sharpen and hone the car's agility through the curves. It's Jaguar Technology delivering a driving experience like no other.

iPod is a trademark of Apple Computer Inc. registered in the US and other countries.



ADAPTIVE DYNAMICS ACTIVE DIFFERENTIAL CONTROL



BI-XENON™ HEADLAMPS WITH INTEGRATED CORNERING LAMPS

Bi-Xenon is a registered trademark of Hella KgaA Hueck & Co





JAGUAR DRIVE CONTROL™ DRIVE MODE SPORT MODE DYNAMIC MODE WINTER MODE



DYNAMIC STABILITY CONTROL TracDSC





BOWERS & WILKINS 440W SURROUND SOUND SYSTEM WITH 14 LOUDSPEAKERS





DESIGNED IN ASSOCIATION WITH ONE OF THE WORLD'S LEADING SPEAKER BRANDS



# THE XF COLLECTION

XF LUXURY

XF PREMIUM LUXURY

XF PORTFOLIO

XFR

XF ACCESSORIES







XF LUXURY

3.0 V6 PETROL  
3.0 V6 DIESEL S

CONTEMPORARY, INDIVIDUAL AND EXPERTLY CRAFTED,  
THE XF SURPASSES THE COMPETITION WITH A CABIN  
RICH IN QUALITY FINISHES AND DESIGN BRILLIANCE





## EXTERIOR CHOICE

### ALLOY WHEELS

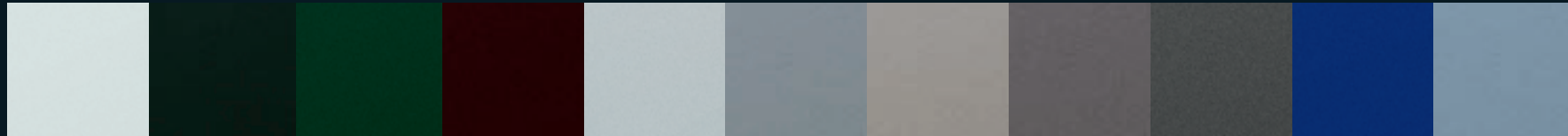


	18" Venus	18" Cygnus	19" Artura	19" Caravela	20" Senta	
Engine						● Standard
3.0 V6 Petrol	●	○	-	○	○	○ Option
3.0 V6 Diesel S	●	○	-	○	○	- Not available

### EXTERIOR COLOURS

Standard

Options



Polaris White

Ebony

Botanical Green\*

\*Metallic paint

Caviar\*

Liquid Silver\*

Lunar Grey\*

Vapour Grey\*

Pearl Grey\*

Available until mid 2010

Stratus Grey\*

Available from mid 2010

Spectrum Blue\*

Frost Blue\*

## INTERIOR CHOICE

### VENEERS

Standard

Option

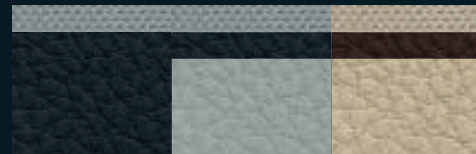


Knurled Aluminium  
with Satin American  
Walnut

Knurled Aluminium  
with Burr Walnut

### INTERIOR ENVIRONMENT

Standard



Warm Charcoal seats  
with Warm Charcoal  
and Dove

Dove seats with  
Warm Charcoal  
and Dove

Barley seats with  
Truffle and Canvas

Headlining  
Upper facia

Seat Trim

### HEADLININGS

Standard



Canvas

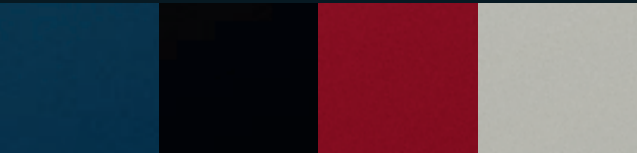
Dove





Jaguar Drive Selector™

Phosphor blue halo illumination and interior mood lighting



Indigo\*

Ultimate Black\*

Claret\*

Cashmere\*



BOND GRAIN LEATHER SEAT FACINGS  
7-INCH FULL COLOUR TOUCH-SCREEN  
WITH NAVIGATION SYSTEM  
6-SPEED ELECTRONIC AUTOMATIC  
TRANSMISSION WITH JAGUAR SEQUENTIAL  
SHIFT™ AND JAGUAR DRIVE SELECTOR™  
PHOSPHOR BLUE HALO ILLUMINATION  
AND INTERIOR MOOD LIGHTING  
JAGUAR SMART KEY SYSTEM™ WITH  
KEYLESS START (START/STOP BUTTON)

INTERIOR SHOWN

WARM CHARCOAL BOND GRAIN  
LEATHER SEATS  
KNURLED ALUMINIUM WITH SATIN  
AMERICAN WALNUT  
WARM CHARCOAL INSTRUMENT PANEL  
UPPER AND DOOR TOP ROLLS



XF PREMIUM LUXURY 5.0 V8 PETROL

WITH ENHANCEMENTS FROM SOFTGRAIN LEATHER,  
AND HAND-FINISHED WOOD VENEERS TO ADDITIONAL  
TECHNICAL FEATURES, THE XF PREMIUM LUXURY  
DELIVERS MORE REWARD FOR THE LONG DRIVE







## EXTERIOR CHOICE

### ALLOY WHEELS



18" Cygnus

18" Venus

19" Artura

19" Caravela

20" Selenia

20" Senta

Engine  
5.0 V8 Petrol

-

-

○

●

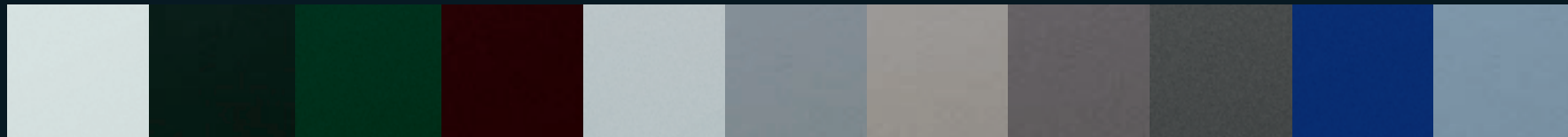
○

○

● Standard  
○ Option  
- Not available

### EXTERIOR COLOURS

Standard



Polaris White

Ebony

Botanical Green\*  
\*Metallic paint

Caviar\*

Liquid Silver\*

Lunar Grey\*

Vapour Grey\*

Pearl Grey\*  
Available until mid 2010

Stratus Grey\*  
Available from mid 2010

Spectrum Blue\*

Frost Blue\*

### INTERIOR CHOICE

#### VENEERS

Standard

Option



Knurled Aluminium  
with Burr Walnut

Knurled Aluminium  
with Rich Oak

#### INTERIOR ENVIRONMENT

Standard

Option



Warm Charcoal seats  
with Warm Charcoal  
and Dove

Dove seats with  
Warm Charcoal  
and Dove

Barley seats with  
Truffle and Canvas

Ivory seats with  
Oyster and Canvas

Headlining  
Upper fascia

Seat Trim

#### HEADLININGS

Standard



Canvas

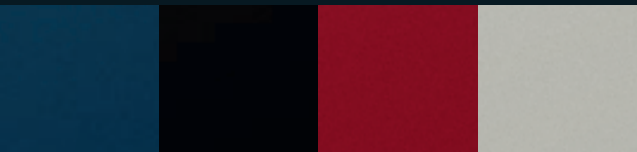
Dove



Jaguar 320W premium sound system



Jaguar Smart Key System™ with Keyless entry



Indigo\*

Ultimate Black\*

Claret\*

Cashmere\*



SOFTGRAIN LEATHER ON SEATS, INSTRUMENT  
PANEL UPPER AND DOOR TOP ROLLS

JAGUAR 320W PREMIUM SOUND SYSTEM

JAGUAR SMART KEY SYSTEM™ WITH  
KEYLESS ENTRY

FRONT PARKING AID WITH REAR CAMERA

INTERIOR SHOWN

BARLEY SOFTGRAIN LEATHER SEATS

KNURLED ALUMINIUM WITH BURR WALNUT

TRUFFLE SOFTGRAIN LEATHER INSTRUMENT  
PANEL UPPER AND DOOR TOP ROLLS



XF PORTFOLIO

3.0 V6 DIESEL S

5.0 V8 PETROL

SPORTING LUXURY COMES TO LIFE IN THE WIDE CHOICE OF FINE MATERIALS, EXQUISITE CRAFTSMANSHIP AND RICH SPECIFICATIONS OF JAGUAR'S PORTFOLIO SERIES







## EXTERIOR CHOICE

### ALLOY WHEELS



20" Selena

20" Senta

Engine			
3.0 V6 Diesel S	●	○	● Standard
5.0 V8	●	○	○ Option



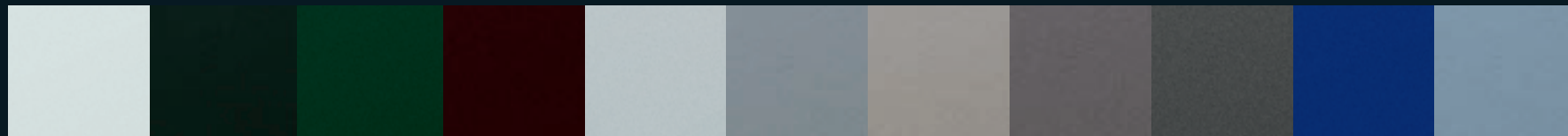
20" Selena Alloy Wheels



Unique Figured Ebony Veneer

## EXTERIOR COLOURS

Standard



Polaris White

Ebony

Botanical Green\*

\*Metallic paint

Caviar\*

Liquid Silver\*

Lunar Grey\*

Vapour Grey\*

Pearl Grey\*

Available until mid 2010

Stratus Grey\*

Available from mid 2010

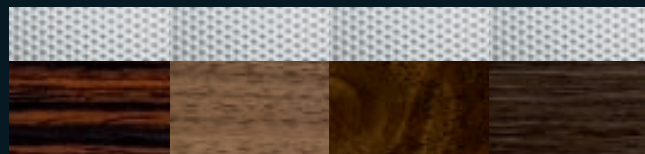
Spectrum Blue\*

Frost Blue\*

## INTERIOR CHOICE

### VENEERS

Standard



Knurled Aluminium with Figured Ebony

Knurled Aluminium with Satin American Walnut

Knurled Aluminium with Burr Walnut

Knurled Aluminium with Rich Oak

### INTERIOR ENVIRONMENT

Standard



Headlining  
Upper facia

Seat Trim

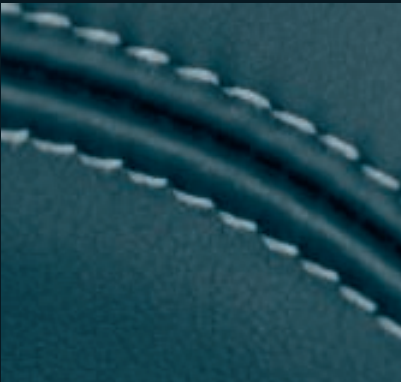
Warm Charcoal seats with Warm Charcoal and Ivory contrast stitch and Dove

Barley seats with Truffle and Barley contrast stitch and Canvas

Spice seats with Warm Charcoal and Spice contrast Stitch and Canvas

Ivory seats with Truffle and Ivory contrast stitch and Canvas

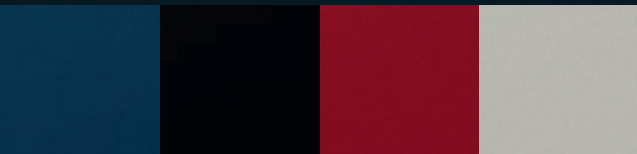
Ivory seats with Oyster and Ivory contrast stitch and Canvas



Softgrain Leather with twin needle contrast stitch



Bowers & Wilkins 440W surround sound system



Indigo\*

Ultimate Black\*

Claret\*

Cashmere\*

## HEADLININGS

Standard



Canvas Jaguar Dove Jaguar Suede cloth Premium Headlining  
Suede cloth Premium Headlining

BOWERS & WILKINS 440W SURROUND SOUND SYSTEM WITH PORTABLE AUDIO INTERFACE (MP3 CONNECTION)

TWIN NEEDLE CONTRAST STITCHING\* WITH UNIQUE COLOURWAYS

SUEDECLOTH PREMIUM HEADLINING

DEEP PILE CARPET MATS WITH CONTRAST EDGE

UNIQUE FIGURED EBONY VENEER

ACTIVE VENTILATED FRONT SEATS - HEATED/COOLED

INTERIOR SHOWN

IVORY SOFTGRAIN LEATHER SEATS

KNURLED ALUMINIUM WITH FIGURED EBONY

OYSTER SOFTGRAIN LEATHER WITH IVORY CONTRAST STITCH ON INSTRUMENT PANEL UPPER AND DOOR TOP ROLLS

\*Instrument panel and door top rolls only





XFR

5.0 V8 SUPERCHARGED

JAGUAR'S HEART BEATS FASTEST IN THE  
SUPERCHARGED XFR - THE MOST DYNAMIC,  
MOST EXHILARATING EXPRESSION OF JAGUAR  
SPORTING LUXURY





## EXTERIOR CHOICE

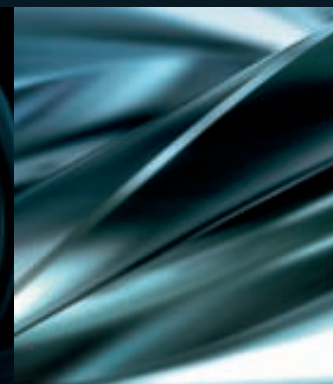
### ALLOY WHEELS



20" Nevis



R Performance 20" Nevis Wheels with optional Red Brake Callipers



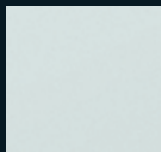
Supercharger



Adaptive Dynamics

## EXTERIOR COLOURS

Standard



Polaris White

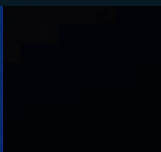


Botanical Green\*

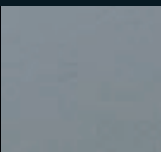
\*Metallic paint



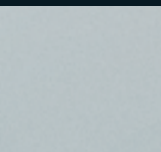
Spectrum Blue\*



Ultimate Black\*



Lunar Grey\*



Liquid Silver\*

Unique to XFR



Kyanite Blue\*

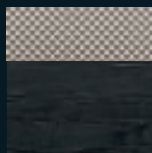


Salsa

## INTERIOR CHOICE

### VENEERS

Standard



Dark Mesh Aluminium with Dark Oak

### INTERIOR ENVIRONMENT

Standard



Headlining

Upper facia

Seat Trim

Warm Charcoal seats with Warm Charcoal and Dove

Red Zone and Warm Charcoal seats with Warm Charcoal and Red Zone contrast stitch and Dove

London Tan and Warm Charcoal seats with Warm Charcoal and London Tan contrast stitch and Canvas

Ivory seats with Warm Charcoal and Ivory contrast stitch and Canvas

### HEADLININGS

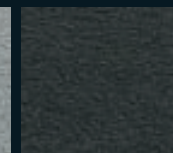
Standard



Canvas Jaguar Suedecloth Premium Headlining

Dove Jaguar Suedecloth Premium Headlining

Option



Jet Jaguar Suedecloth Premium Headlining





Bonnet Louvres



R branded steering wheel



5.0 LITRE V8 SUPERCHARGED ENGINE  
 ADAPTIVE DYNAMICS  
 ACTIVE DIFFERENTIAL CONTROL  
 JAGUAR R STYLING  
 Unique front bumper with larger air intakes  
 Front grille with black mesh inserts  
 Heat extracting bonnet louvres  
 R Performance 20 inch Nevis wheels  
 Quad exhaust tailpipes  
 Sports seats with electrically adjustable side bolsters  
 R PERFORMANCE BRAKING SYSTEM

INTERIOR SHOWN

LONDON TAN AND WARM CHARCOAL  
 SOFTGRAIN LEATHER SEATS WITH  
 LONDON TAN CONTRAST STITCH  
 DARK MESH ALUMINIUM WITH DARK OAK  
 WARM CHARCOAL SOFTGRAIN LEATHER  
 WITH LONDON TAN CONTRAST STITCH  
 ON INSTRUMENT PANEL UPPER AND DOOR  
 TOP ROLLS



XF ACCESSORIES

R PERFORMANCE AERODYNAMIC PACK  
CONSISTING OF FRONT BUMPER, SIDE APPLIQUES,  
BOOT LID SPOILER, EXHAUST TAIL PIPE FINISHERS  
WITH OPTIONAL SCULPTED LED BLADES



R PERFORMANCE AERODYNAMIC PACK

For more information on Accessories, please contact your Jaguar dealer





XF ACCESSORIES

CHROME SIDE POWER VENT\*





BRIGHT FINISH PEDAL KIT

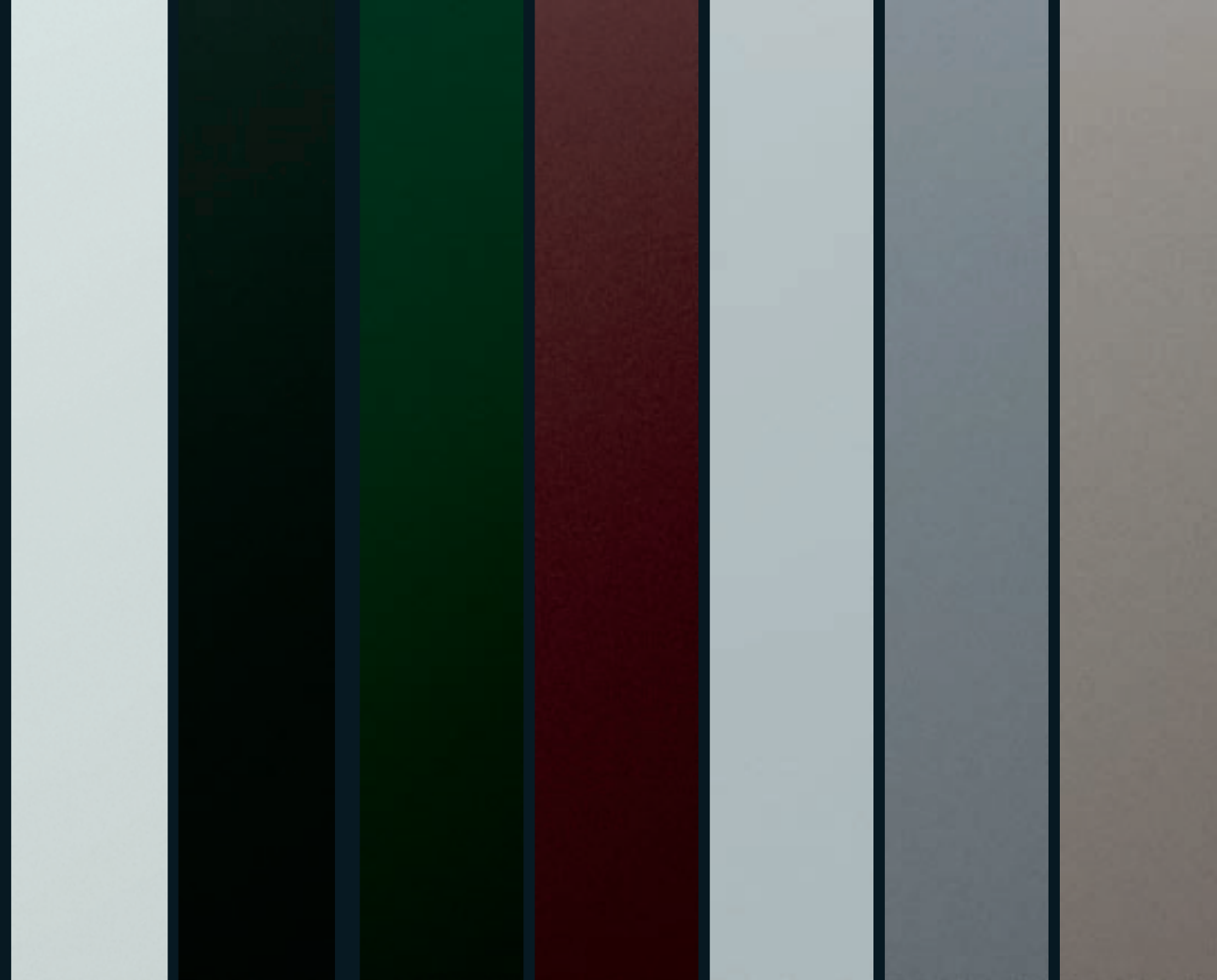


ILLUMINATED SILL TREAD PLATES

\*Available as an accessory. Contact your dealer for factory fit option availability.



EXTERIOR COLOURS



Polaris White

Ebony

Botanical Green\*

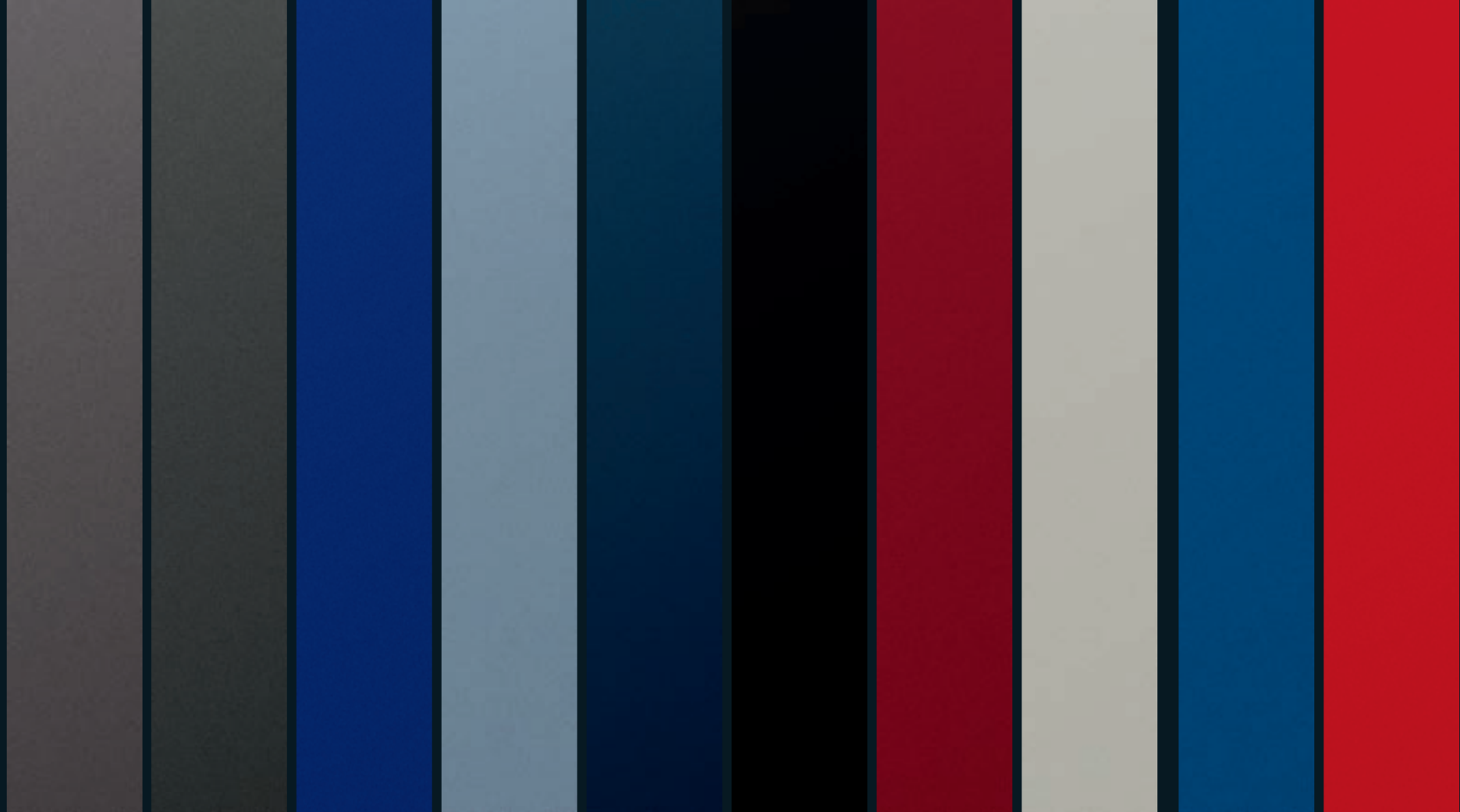
Caviar\*

Liquid Silver\*

Lunar Grey\*

Vapour Grey\*





Pearl Grey\*  
Available until mid 2010

Stratus Grey\*  
Available from mid 2010

Spectrum Blue\*

Frost Blue\*

Indigo\*

Ultimate Black\*

Claret\*

Cashmere\*

Kyanite Blue\*  
Unique to XFR

Salsa  
Unique to XFR

\*Metallic paint



LEATHERS AND TRIMS

Warm Charcoal Bond Grain

Dove Bond Grain

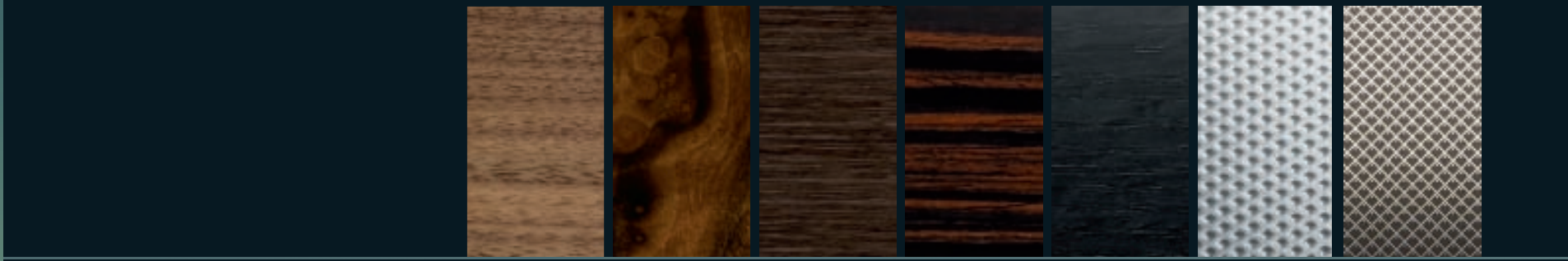
Barley Bond Grain

Truffle Bond Grain\*

Warm Charcoal Softgrain

Dove Softgrain

Barley Softgrain



VENEERS AND FINISHERS

Satin American Walnut

Burr Walnut

Rich Oak

Figured Ebony  
Unique to Portfolio

Dark Oak  
Unique to XFR

Knurled Aluminium Finisher

Dark Mesh Aluminium Finisher  
Unique to XFR





Truffle Softgrain\*

Oyster Softgrain\*

Ivory Softgrain

Spice Softgrain

Red Zone Softgrain  
Unique to XFR

London Tan Softgrain  
Unique to XFR



CONTRAST STITCH

Warm Charcoal and Ivory contrast stitch

Truffle and Barley contrast stitch

Warm Charcoal and Spice contrast stitch

Oyster and Ivory contrast stitch

Truffle and Ivory contrast stitch

Warm Charcoal and Red Zone contrast stitch

Warm Charcoal and London Tan contrast stitch

\*Instrument panel and door top rolls only.



---

## POWERTRAIN AND DRIVING DYNAMICS

6-speed electronic automatic transmission with Jaguar Sequential Shift™

JaguarDrive Selector™

JaguarDrive Control™ with Winter Mode

JaguarDrive Control™ with Dynamic Mode\*

Servotronic Steering

Brake pad wear indicator\*

Cruise Control with Automatic Speed Limiter (ASL)

Electric Parking Brake (EPB)

Vented Disc Brakes, front and rear

DSC (Dynamic Stability Control) with Trac DSC mode

Traction Control

---

## EXTERIOR FEATURES

Heated, auto dimming, power folding exterior mirrors with electric adjustment, side repeaters and approach lamps

LED rear lamps

Rain sensing windscreen wipers

Bright side window surrounds

Rear Parking aid (includes Touch-screen visual indicator)

Acoustic laminated windscreen\*\*

---

## SAFETY AND SECURITY

Airbags, front and side (driver and front passenger)

Side curtain airbags

Anti-lock Braking System (ABS)

Pedestrian Contact Sensing™ - automatically deployable bonnet system

Front seat whiplash reduction system

Front seat belt pre-tensioners

High level rear stop lamp

Cornering Brake Control (CBC)

Emergency Brake Assist (EBA)

Security system with volumetric and perimeter sensing alarm and vehicle immobiliser

Remote control central locking with deadlocking and drive-away locking function

Valet mode

---

## WHEELS

Alloy space saver spare wheel

---

## INTERIOR FEATURES

Automatic climate control

Steering column with electric adjustment for height and reach with entry and exit tilt-away

Auto-dimming interior rear view mirror

Front centre console storage compartment

2 front and 1 rear auxiliary power sockets

Twin front and rear cupholders

Front and rear electric windows with one-touch open/close and anti-trap

Driver information centre with dual function trip computer

JaguarSense™

Phosphor blue halo illumination and interior mood lighting

Jaguar Smart Key System™ with Keyless start

---

## INTERIOR TRIM

Memory function with 2 settings for driver's seat, exterior mirrors and steering column

Rear centre head restraint

Folding 60/40 split rear seats

Leather 3-spoke steering wheel with Jaguar Sequential Shift™ paddles and remote controls for audio,

cruise control, Bluetooth® telephone connectivity and (where fitted) JaguarVoice™

---

## MULTIMEDIA

3.5mm stereo auxiliary input socket

Bluetooth® telephone connectivity

Navigation system

7-inch full colour Touch-screen

---

## STANDARD FEATURES

\* Not available on 3.0 V6 Petrol models

\*\* Only available on 3.0 V6 Diesel S models

	LUXURY	PREMIUM LUXURY	PORTFOLIO	XFR
<b>POWERTRAIN AND DRIVING DYNAMICS</b>				
3.0 Litre V6 Petrol	●	-	-	-
3.0 Litre V6 Diesel S	●	●	-	-
5.0 Litre V8 Petrol	-	●	●	-
5.0 Litre V8 Petrol Supercharged	-	-	-	●
Adaptive Dynamics	-	-	-	●
Active Differential Control	-	-	-	●
Adaptive Cruise Control (ACC) with Advanced Emergency Brake Assist	O <sup>i</sup>	O	O	O
<b>EXTERIOR FEATURES</b>				
Bright mesh grille	●	●	●	-
Black grille	D	-	D	●
Blind Spot Monitor	●	●	●	●
Heated windscreen with timer	●	●	●	●
Halogen headlamps with automatic on/off and manual levelling	●	●	-	●
Headlamp washers	P	●	●	●
Bi-Xenon™ headlamps with integrated cornering lamps, headlamp washers and automatic levelling	P	●	●	●
Electric glass sunroof with tilt/slide one touch operation	O	O	O	O
Metallic paint	●	●	●	●
Rear spoiler	A	A	A	●
Bonnet louvres with Supercharged script	-	-	-	●
R Exterior Theme	-	-	-	●
Front parking aid with rear camera	P	●	●	-
Diesel misfueling protection device	●	-	●	-
R Performance Red Brake Callipers	-	-	-	O
Chrome side power vent (available as a factory fit option from mid 2010)	O	O	O	O
<b>SAFETY AND SECURITY</b>				
Tyre Pressure Monitoring System (TPMS)	O	O	●	●
<b>INTERIOR THEMES</b>				
R Interior theme	-	-	-	●
Ivory leather trim	-	O	NCO	NCO
<b>INTERIOR FEATURES</b>				
Auto recirculation - Climate Control	O	O	O	O
Electric rear window sunblind	O	O	O	O
Jaguar Smart Key System™ with Keyless entry	O	●	●	●

	LUXURY	PREMIUM LUXURY	PORTFOLIO	XFR
<b>INTERIOR TRIM</b>				
Bond Grain seats with leather seat facings (10/10 way)	●	-	-	-
Softgrain leather seats (10/10 way)	-	●	●	-
Softgrain leather seats (16/12 way)	-	-	-	●
R Softgrain sport leather seats (18/14 way)	-	-	-	●
Active ventilated front seats - heated/cooled	-	P	O	●
Heated front seats	-	-	-	●
Bond Grain stitched and tailored instrument panel and door top rolls	●	P	P	●
Softgrain leather stitched and tailored instrument panel and door top rolls	-	-	●	●
Softgrain leather stitched and tailored instrument panel and door top rolls with contrast stitching	-	-	-	● <sup>‡</sup>
Heated steering wheel	P	P	O	●
Front and rear carpet mat set	O	●	●	●
Front and rear premium carpet mat set	-	●	●	●
Jaguar Suedecloth Premium Headlining	-	-	●	●
Jet Jaguar Suedecloth Premium Headlining	-	-	-	O
<b>MULTIMEDIA</b>				
Jaguar sound system with CD player	●	-	-	-
Jaguar 320W premium sound system with CD player	O	●	-	-
Portable Audio Interface	O	O	-	-
Bowers & Wilkins 440W sound system with in-dash 6 disc CD player and Portable Audio Interface	-	O	●	●
JaguarVoice™	-	O	●	●
Digital/Analogue television	-	O	●	●
In-dash 6 disc CD player	O	O	-	-
<b>PACKS</b>				
Parking Aid Pack with Rear Camera	O	-	-	-
Luxury Winter Comfort Memory Pack	-	O	-	-
Premium Luxury Winter Comfort Pack	-	O	-	-
All Season Comfort Pack	-	O	-	-
Visibility Pack with Bi-Xenon™ Headlamps	O	-	-	-

## OPTIONAL FEATURES

Please consult your local dealer for details.

Please refer to the glossary for a more detailed description of some features

● Standard O Option P Option as part of Pack D Standard Diesel S only. Available to delete as No Cost Option NCO No Cost Option A Accessory fit – Not available

<sup>i</sup> Not available on 3.0 V6 Petrol.

<sup>‡</sup> Contrast stitching not available if Warm Charcoal with Warm Charcoal interior selected.



#### Active Differential Control

An electronically controlled, active differential with Handling Functionality that limits the slip between the rear wheels to optimise traction and stability in different driving conditions, working in harmony with the Traction, ABS and DSC systems.

#### Adaptive Dynamics

Provides the optimum balance between low speed ride comfort and high speed handling precision, analysing body movement, steering and road wheel inputs up to 500 times a second and continuously adjusting the suspension settings through electronically controlled dampers.

#### DSC (Dynamic Stability Control)

Intervenes in demanding driving situations by applying braking to individual wheels and reducing engine torque.

#### Trac DSC mode

Provides a higher intervention threshold for the more enthusiastic driver.

#### JaguarDrive Control™

Interacts with the DSC (Dynamic Stability Control) engine and transmission management systems to change the characteristics of engine mapping, transmission shifts and brake interventions. It offers different modes selectable by a button to optimise the vehicle response depending on driving conditions and style.

#### Winter Mode

Softens the responsiveness of the engine and modifies the gear change strategy to help maintain optimum traction in icy or slippery conditions. The vehicle performs in a more gentle and controlled manner, allowing more confident progress. When active, Winter mode selects 2nd gear for pulling away on level ground (no incline).

#### Dynamic Mode

Optimises vehicle systems to deliver a more involving driving experience. When selected, Trac DSC is automatically engaged, and engine torque delivery characteristics and gear shift points are modified to improve responsiveness further. When selected while the transmission is in Sport manual mode, transmission up-shifts are fully controlled by the driver, with no automatic up-shift when the rev limit is reached.

#### Jaguar Sequential Shift™

Provides the choice of Drive, Sport Automatic or Manual gearshift modes, with one touch paddles mounted behind the steering wheel to control gear changes up and down manually.

#### Seats (10/10 way)

Driver's and passenger's electric adjustment including fore/aft, height, cushion tilt, recline and 2-way lumbar support.

#### Seats (16/12 way)

Driver's electric adjustment including fore/aft, height, cushion tilt, recline, headrest height, 4-way lumbar support, cushion length and passenger's electric adjustment including fore/aft, height, cushion tilt, recline, headrest height and 2-way lumbar support.

#### Seats (18/14 way)

As 16/12 way seats but with the addition of adjustable side bolsters for the driver's and passenger's seat backs.

#### Memory function

2 settings for driver's seat, exterior mirrors and steering column.

#### Navigation system<sup>(1)</sup>

With DVD mapping, destination entry on the move and voice guidance.

#### Jaguar sound system

140W system with AM/FM radio featuring EON, RDS, PTY, TA and single slot CD player with automatic volume control and 8 speakers.

#### Jaguar 320W premium sound system

With AM/FM radio featuring EON, RDS, PTY, TA and single slot CD player with automatic volume control, WMA, MP3 compatibility and 8 speakers plus Sub-Woofer.

#### Bowers & Wilkins 440W surround sound system

With AM/FM radio featuring EON, RDS, PTY, TA and 6-disc in-dash CD player with automatic volume control, WMA, MP3 compatibility, Portable Audio Interface, a remote amplifier with Dolby® Pro Logic® II surround sound and 13 speakers plus Sub-Woofer.

#### Windows Media Audio (WMA) and MP3 compatibility

Enables the CD player to play CDs which contain WMA and MP3 files.

#### Bluetooth® telephone connectivity<sup>(2)</sup>

A Bluetooth® equipped Jaguar, enables hands-free use of your mobile phone at any time when the phone is in the car. Bluetooth® is compatible with a selected range of mobile phones from a number of different manufacturers.

#### JaguarVoice™

Voice control of telephone, navigation system and Touch-screen displays with note pad facility.

## GLOSSARY





### Portable Audio Interface<sup>(3)</sup>

Allows the connection of an iPod®, MP3 player or a USB Mass Storage Device to the in-car sound system and control via the 7 inch Touch-screen.

### 7-inch full colour Touch-screen

With controls for audio, climate control, Bluetooth® telephone connectivity and navigation.

### Parking Aid Pack with Rear Camera

Parking aid with front sensors (includes Touch-screen visual indicator) and rear camera parking aid.

### Luxury Winter Comfort Memory Pack

Bond Grain seats with leather seat facings (10/10 way), with 3-stage heated front seats and heated steering wheel plus memory function with 2 settings for driver's seat, exterior mirrors and steering column.

### Premium Luxury Winter Comfort Pack

Softgrain leather seats (10/10 way) with 3-stage heated front seats and heated steering wheel.

### All Season Comfort Pack

Softgrain leather seats (10/10 way), with active ventilated heated and cooled front seats and heated steering wheel.

### Visibility Pack with Bi-Xenon™ headlamps

As Visibility Pack with Bi-Xenon™ headlamps with integrated cornering lamps, headlamp washers and automatic levelling.

### JaguarSense™

An electronic control system that operates the front overhead console lights.

### R Exterior Theme

Unique deeper section front bumper with larger lower air intakes, black mesh grille, side sill extensions, aerodynamic boot lid spoiler, body colour rear valance and quad exhaust tailpipes. 'Supercharged' embossed bonnet louvres for additional cooling. Silver-grey brake callipers with R logo and R badge on boot lid.

### R Interior Theme

Unique sport themed interior incorporating a dark mesh aluminium finish on instrument panel and doors, Dark Oak veneer, Warm Charcoal upper and lower environment with contrast stitching and carpet mat edge binding (colour dependent on seat colour). Sports seats with embossed R logo (front and rear); R badging on steering wheel and instrument panel; instrument cluster dials with red pointers and 'Supercharged' motif.

### Valet mode

When Valet mode is enabled, the vehicle can be parked by a parking attendant who can lock the vehicle after parking, but cannot open the luggage or glove compartments. Valet mode can be enabled and disabled through a secure function in the touch-screen.

### Wheel Specifications

Venus 8.5J x 18" alloy wheels  
Cygnus 8.5J x 18" alloy wheels  
Artura 8.5J x 19" alloy wheels  
Caravela 8.5J x 19" alloy wheels  
Senta 8.5J x 20" alloy wheels  
Selena 8.5J x 20" alloy wheels  
Nevis 8.5J x 20" (front) 9.5J x 20" (rear) alloy wheels

<sup>(1)</sup> The navigation system must always be used in conditions that will not affect the driver's ability to drive safely or affect the safety of other road users.

<sup>(2)</sup> The Bluetooth® word mark and logos are owned by the Bluetooth SIG, Inc. and any use of such marks by Jaguar Cars Limited is under license.

<sup>(3)</sup> iPod is a trademark of Apple Inc., registered in the U.S. and other countries.

<sup>(4)</sup> Not available with ACC and only available with selected exterior colours



## TECHNICAL SPECIFICATIONS

Overall length 4,961mm  
Overall height 1,460mm  
Wheelbase 2,909mm

Front track 1,559mm  
Overall width inc. mirrors 2,077mm  
Overall width with mirrors folded in 1,920mm  
Internal width Front 1,444mm  
Internal headroom Front 990mm  
(Front 943mm when sunroof is fitted)

Rear track 1,571 - 1,605mm  
Internal width Rear 1,432mm  
Internal headroom Rear 956mm  
(Rear 954mm when sunroof is fitted)

ENGINES		3.0 Litre V6 Diesel S AJ-V6D GEN III S	3.0 Litre V6 Petrol	5.0 Litre V8 Petrol AJ-V8 GEN III	5.0 Litre V8 Petrol Supercharged AJ-V8 GEN III R
Cylinders/Valves per Cylinder		6/4	6/4	8/4	8/4
Bore/Stroke	mm	84/90	89/79.5	92.5/93	92.5/93
Capacity	cc	2,993	2,967	5,000	5,000
Maximum power	kW	202	175	283	375
@rev/min		4,000	6,800	6,500	6,000-6,500
Maximum torque	Nm	600	293	515	625
@rev/min		2,000	4,100	3,500	2,500-5,500
Compression ratio:1		16.0	10.5	11.5	9.5
Transmission		6-speed automatic	6-speed automatic	6-speed automatic	6-speed automatic
<b>PERFORMANCE</b>					
Acceleration	0-100km/h seconds	6.4	8.3	5.7	4.9
Top speed	km/h	250 limited	237	250 limited	250 limited
<b>FUEL CONSUMPTION<sup>(1)</sup></b>					
Urban	l/100km	9.5	15.8	17.3	18.7
Extra Urban	l/100km	5.5	7.5	7.8	8.7
Combined	l/100km	6.8	10.5	11.1	12.5
Carbon dioxide emissions	g/km	179	249	264	292
Tank capacity	ltr approx.	69.5	69.5	69.5	69.5
Usable tank capacity	ltr approx.	64.0	64.0	64.0	64.0
<b>WEIGHT<sup>(2)</sup></b>					
Weight	kg	1,820	1,690	1,780	1,891
Gross vehicle weight	kg	2,360	2,215	2,300	2,370

Permitted trailer load, unbraked – 750kg<sup>(3)</sup> Permitted trailer load, braked – 1,850kg<sup>(3)</sup> Permitted towbar download – 75kg<sup>(3)</sup> Turning circle - 11.48m  
 Boot volume with space saver – 500 litres – VDA Boot volume with rear seats folded and space saver - 923 litres – VDA

<sup>(1)</sup> All Fuel economy data has been measured in accordance with current Australian ADR 81/02 test procedures. Under normal use a vehicle's actual fuel consumption may differ from that achieved through the test procedure, depending on driving technique, road and traffic conditions, environmental factors, and vehicle condition. If in any doubt, please consult your dealer; the information given is correct at the time of publication.

<sup>(2)</sup> Please consult your dealer for details of charges associated with option fitment. Weights reflect vehicles to standard specifications. Optional extras increase weight.

<sup>(3)</sup> Not applicable on 5.0 Litre V8 Petrol and 5.0 Litre V8 Petrol Supercharged



THE XF OWNERSHIP EXPERIENCE.

# Service, assurance, and peace of mind are all part of the pride of owning your XF.

## THE JAGUAR ACCESSORY RANGE

Enabling you to personalise your car, to create a driving experience that is even more individually rewarding. All Jaguar accessories are tested rigorously for safety and durability in the most arduous of climates and conditions. A comprehensive range of styling options, interior and exterior accessories, enabling you to tailor your XF to suit your personal style.

## BECAUSE ONLY THE BEST WILL DO

An official Jaguar dealer or Approved Service Centre can ensure that Jaguar trained, specialist technicians, with access to the full range of Jaguar approved parts and tools, will always be on hand to guarantee that every fitting, or repair, is carried out exactly the way Jaguar intended. Your Jaguar dealer or Approved Service Centre can also supply and fit Jaguar approved accessories to personalise and add to the practicality and style of your XF model.

## JAGUAR ROADSIDE ASSISTANCE†

All Jaguar vehicles purchased in Australia benefit from complimentary Jaguar Roadside Assistance service for the length of the new car warranty. This covers you Australia-wide 24 hours per day, every day.

## WARRANTY†

3 year/100,000km\* mechanical warranty together with a 3 year unlimited kilometre Paint Surface Warranty and 6 year unlimited kilometre Corrosion (Perforation) Warranty.

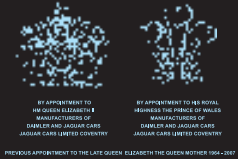
## JAGUAR MAGAZINE

Bringing to life Jaguar's racing heart, Jaguar Magazine is our owner publication. It combines features on our legendary performance, the inside track on our products and company, along with news and events from the world of Jaguar.

## JAGUAR.COM.AU

Dedicated to you and your XF, the interactive jaguar.com.au website features helpful tools such as the dealer locator, model specifications – allowing you to see the car tailored to your specification and colour – and price lists; the latest information on all the Jaguar models and a fascinating look into the passion and legacy that infuse the Jaguar name.

\*Whichever is the earliest. †Terms and conditions apply. Please contact your Jaguar dealer for more information.



## IMPORTANT NOTICE

Jaguar Cars Limited is constantly seeking ways to improve the specification, design and production of its vehicles and alterations take place continually. Whilst every effort is made to produce up-to-date literature, this brochure should not be regarded as an infallible guide to current specifications, Jaguar Australia reserves the right to alter these specifications at any time. This brochure does not constitute an offer for the sale of any particular vehicle. Distributors and dealers are not agents of Jaguar Cars Limited and have absolutely no authority to bind Jaguar Cars Limited by any express or implied undertaking or representation. Illustrations in this brochure may include optional extras.

## ENVIRONMENTAL NOTICE

Jaguar Cars Limited has a vision of being amongst the world's leading companies in demonstrating progress towards sustainability. We aim to do this by contributing to a better quality of life, with corporate citizenship at the very heart of our company, and by reducing our environmental footprint through innovative design and manufacturing, minimizing resource and energy use. Environmental responsibility is a core value in Jaguar, and it is our policy to continually improve our environmental standards in all areas of business activity.

This brochure is produced using certified FSC mixed sources material from well managed forests and is manufactured under a strict ISO 14001 environment system. 10% of this material is recovered fibre, diverting waste from landfill.



## ILLUSTRATIONS

- Front cover: XF Portfolio Diesel S in Liquid Silver with Selena alloy wheels
- Page 5: XFR in Ultimate Black with Nevis alloy wheels
- Page 6: XFR in Ultimate Black with Nevis alloy wheels
- Page 8: XFR with Warm Charcoal Softgrain leather seats, Warm Charcoal Softgrain leather upper and Dark Oak veneer
- Page 11: XF Premium Luxury in Liquid Silver with Artura alloy wheels
- Page 14: XFR in Ultimate Black with Nevis alloy wheels
- Page 17: XFR in Ultimate Black with Nevis alloy wheels and R Performance Red Brake Callipers
- Page 19: XF Portfolio Diesel S in Liquid Silver with Selena alloy wheels
- Page 20: XF Portfolio Diesel S in Liquid Silver with Selena alloy wheels
- Page 28: XFR in Ultimate Black with Nevis alloy wheels
- Page 35: XF Portfolio in Ultimate Black with Selena alloy wheels

Jaguar Australia, Locked Bag 2213  
North Ryde NSW 1670  
Phone: 1800 450 683 or 02 9020 1400  
Fax: 02 9020 1794  
jaguar.com.au

Printed in England JLM/37/02/30/0110

