



THE ALL NEW XJ COLLECTION

JAGUAR





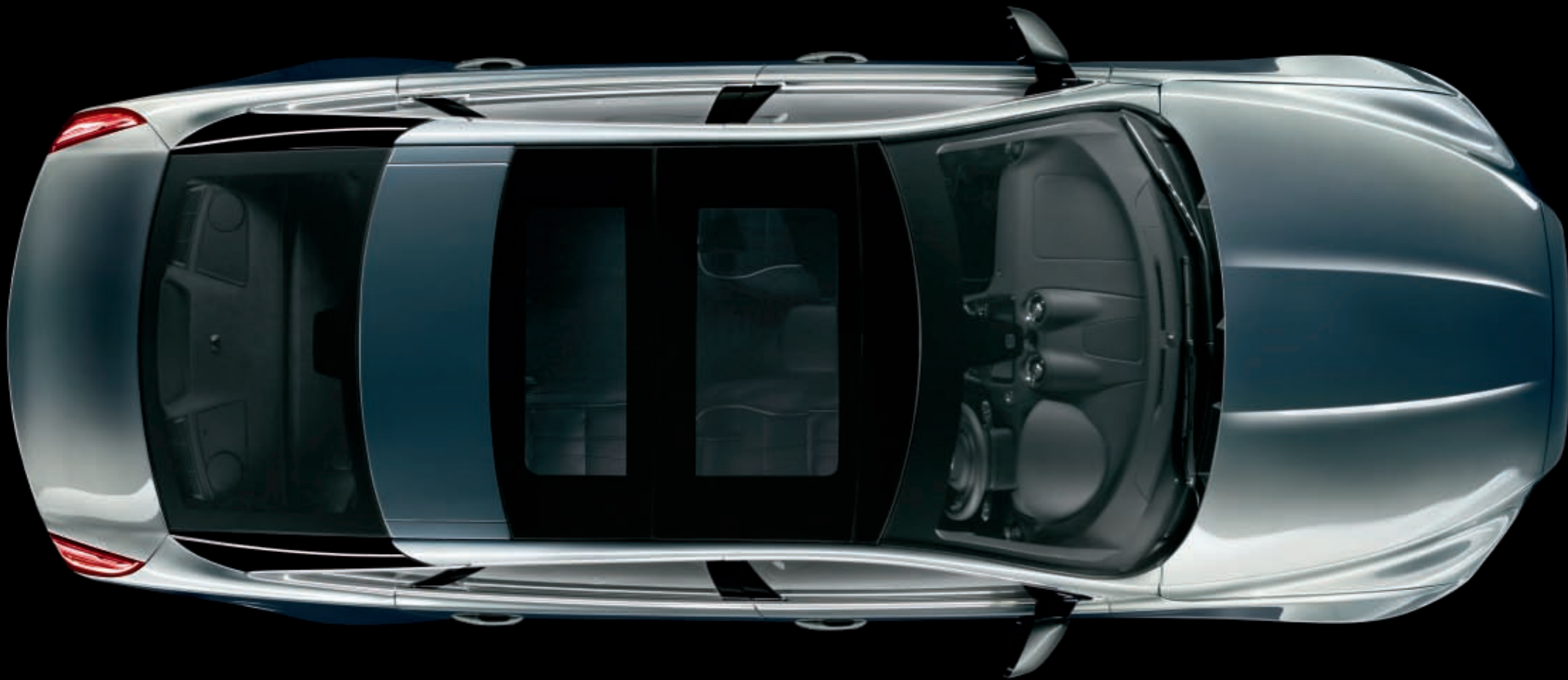


The stunning result of taking a very different road.

You've never seen a car like this before. Because no one has ever thought this way about a car before. The new XJ reflects a vision that defies preconceptions and transforms the idea of luxury.

DESIGN	4
LUXURY	8
TECHNOLOGY	12
PERFORMANCE	18
THE XJ COLLECTION	26
SPECIFICATION	46





FEATURES

PANORAMIC ROOF

THE SLEEK PROFILE HOUSES A PANORAMIC GLASS ROOF THAT FLOODS THE CABIN WITH NATURAL LIGHT AND HEIGHTENS THE FEELING OF INTERIOR SPACE.

CHROME DETAILING

CHROME POWER VENTS ARE SET INTO EACH WING BEHIND THE FRONT WHEEL. EACH FEATURES A SCULPTED INGOT CARRYING THE JAGUAR NAME.

XENON FRONT HEADLAMPS

AUTOMATICALLY OPERATED, WITH BRIGHT WHITE LED SIGNATURE LIGHTS AND FLUSH-SET POWER WASHERS.

Prepare to shatter your preconceptions of how a luxury sports saloon should look.

The all new XJ challenges the notion that large cars should be conservative or restrained. It is, quite simply, the most seductive and confident interpretation yet of our thrilling new design language.

A four-door saloon with the body of a sports coupe, it combines sculptural elegance with visual drama. The streamlined profile and sweeping roofline make this the most aerodynamic Jaguar ever. The striking teardrop shape of the side window graphic accentuates a feeling of length and elegance. A low, wide stance, muscular wheel arches and taut waistline promise exhilarating performance before the car has even turned a wheel.



LED TAIL LAMPS

LED LIGHT CLUSTERS FLOW DOWN THE REAR WINGS. EACH FEATURES THREE FLYING BLADES OF LIGHT CREATING A LOOK REMINISCENT OF THE CLAW MARKS OF A CAT.





The innovative interior exceeds even the promise of the streamlined exterior

Enter the new XJ and experience a new world of luxury. The welcoming cabin provides accommodation for five with lavish amounts of headroom and legroom. For true stretch-out, rear-seat lounging space, long wheelbase models add an impressive 134mm to the rear cabin, providing no less than one metre of rear legroom.



HAND FINISHED,
MIRROR-MATCHED

SUMPTUOUS LEATHER ADORNS ALL OF THE MAIN SURFACES. MIRROR-MATCHED WOOD VENEERS CURVE AROUND THE FACIA AND SWEEP THROUGH THE CABIN TO FORM A CONTINUOUS ARC.




An environment rich in the tactile delight of glove-soft leather, warm veneers and cool chrome; a blend of craftsmanship and quality; sleek, sporting style and cutting-edge hi-tech couture.

ANALOGUE CLOCK

INSPIRED BY THE STYLE, PRECISION AND ELEGANCE OF A HIGH QUALITY WRIST WATCH, IT FEATURES A SPUN-METAL FACE, PRECISION CUT CHROME HOUR CHAPLETS AND AN IRIDESCENT BLUE BACKGROUND.

INTAGLIO

A CRAFTED INGOT SITS CENTRALLY AT THE FRONT OF THE CABIN. IT CARRIES THE JAGUAR SCRIPT OR CAN BE CUSTOMISED TO SUIT YOUR OWN TASTE.

 [JAGUAR.COM.AU](https://www.jaguar.com.au)



Technologies that empower

Born from the belief that advanced technology should be easy to use, the new XJ introduces a range of technologies designed to empower the driver and enhance the drive. Take a seat in the new XJ and enjoy simple, intuitive control and the finest in-car entertainment.



VIRTUAL INSTRUMENTS

AN INDUSTRY-LEADING VIRTUAL INSTRUMENT DISPLAY REPLACES THE CONVENTIONAL "PHYSICAL" INSTRUMENT CLUSTER, INTERACTING WITH DRIVER INPUT TO DISPLAY THE MOST IMPORTANT INFORMATION. COMBINING FLAWLESS AESTHETICS WITH ENHANCED FUNCTIONALITY, VIRTUAL DIALS APPEAR REAL AND SOLID ON A HIGH-DEFINITION GLASS SCREEN SET BEHIND THE STEERING WHEEL.



CONTROLS AT YOUR FINGERTIPS

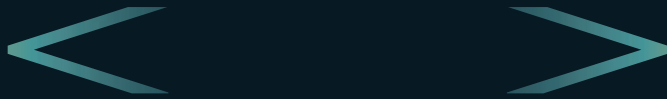
ON THE LEFT AND RIGHT SPOKES OF THE STEERING WHEEL SIMPLE, FIVE-WAY TOUCH PADS – SIMILAR TO THOSE ON A MOBILE PHONE – PROVIDE MENU-DRIVEN ACCESS TO REGULARLY USED FUNCTIONS. THE SYSTEM IS FULLY INTEGRATED WITH THE VIRTUAL INSTRUMENTS, WHICH DISPLAYS DRIVER INPUTS AS A PART OF THE INFORMATION DIAL OR AS A MENU TO TOGGLE THROUGH.



THE PASSENGER WATCHES TV OR SCROLLS THROUGH THEIR IPOD® PLAYLIST



WHILE THE DRIVER CAN ACCESS OTHER FUNCTIONS



INTRODUCING DUAL VIEW

IN ADDITION TO ITS INTUITIVE COMMAND FUNCTIONS, THE TOUCH-SCREEN CAN BE SPECIFIED TO INCLUDE DUAL VIEW - AN AMAZING NEW TECHNOLOGY THAT ALLOWS THE DRIVER AND FRONT PASSENGER TO LOOK AT DIFFERENT CONTENT AT THE SAME TIME.



HARD DRIVE STORAGE

LOAD YOUR FAVOURITE CDS INTO THE CENTRE CONSOLE HEAD UNIT AND THE MUSIC IS SAVED ONTO A 30GB HARD DRIVE - BIG ENOUGH FOR 10 CDS UNCOMPRESSED. EVEN THE NEW XJ'S SATELLITE NAVIGATION SYSTEM IS BASED ON THE HARD DRIVE, FOR FASTER DATA ACCESS AND THE ABILITY TO STORE AND UPDATE MAPPING INFORMATION.

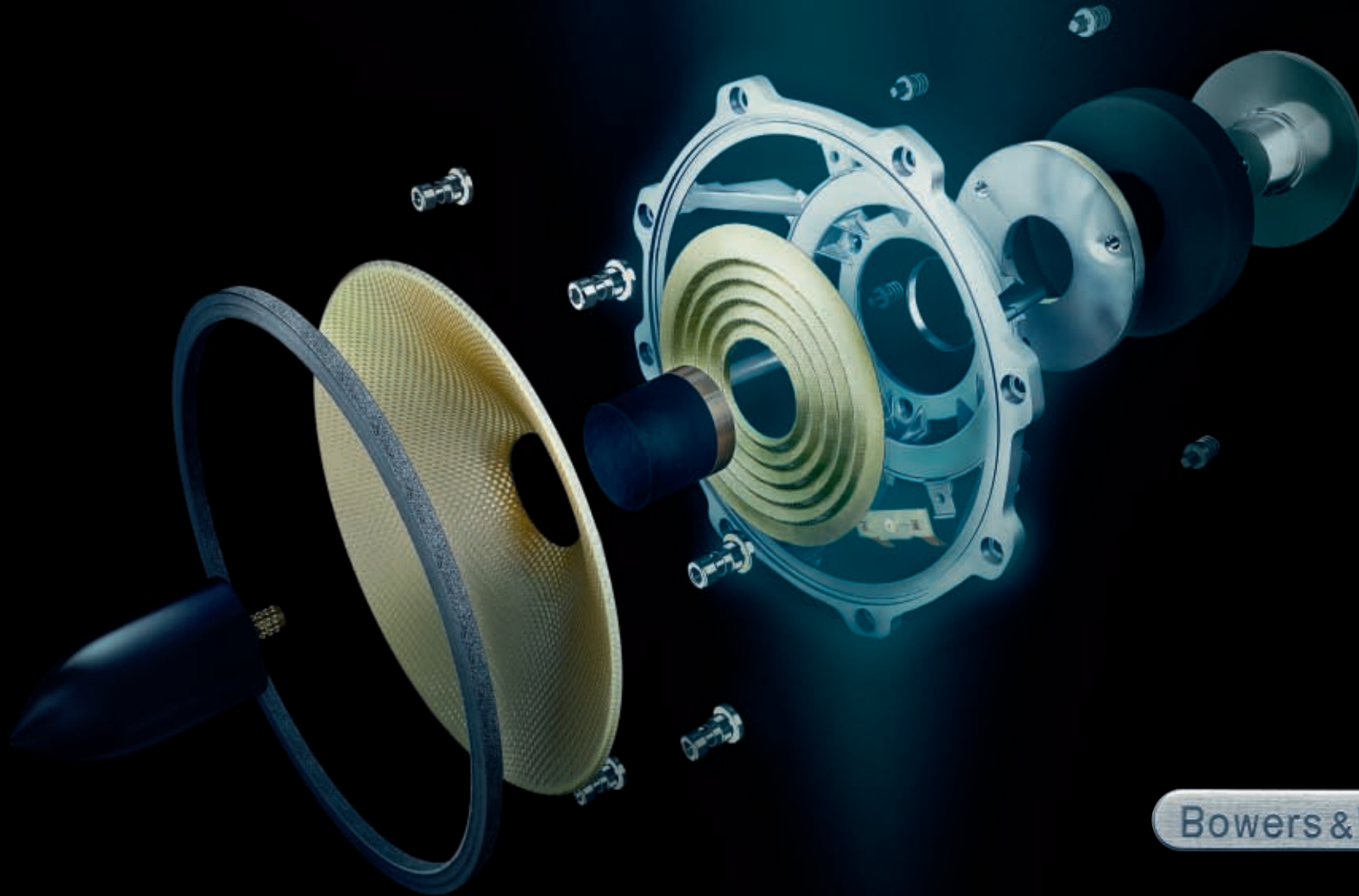


TOUCH-SCREEN

THE ELEGANT DASHBOARD INCLUDES AN EASY TO USE HIGH-DEFINITION TOUCH-SCREEN, WHICH WORKS IN PARALLEL WITH THE VIRTUAL INSTRUMENT DISPLAY. EVERYTHING FROM NAVIGATION AND CLIMATE CONTROL TO TELEPHONE AND AUDIO SYSTEMS CAN BE CONTROLLED EASILY AND INTUITIVELY BY THE TOUCH OF A FINGER, REDUCING THE NUMBER OF SWITCHES ON THE INSTRUMENT PANEL.

BATHED IN LIGHT

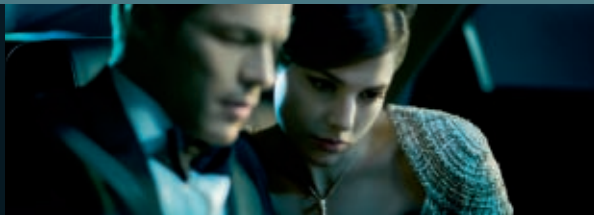
WHEN DAY TURNS TO NIGHT, THE NEW XJ BECOMES ONE OF THE COOLEST PLACES TO BE. GORGEOUS PHOSPHOR BLUE MOOD LIGHTING BATHES THE INTERIOR IN A SOFT GLOW FROM THE HALO OF THE MAIN SWITCHES AND CONTROLS, TO THE HIGHLIGHTS OF THE DOORS AND CENTRE CONSOLE.



Bowers & Wilkins

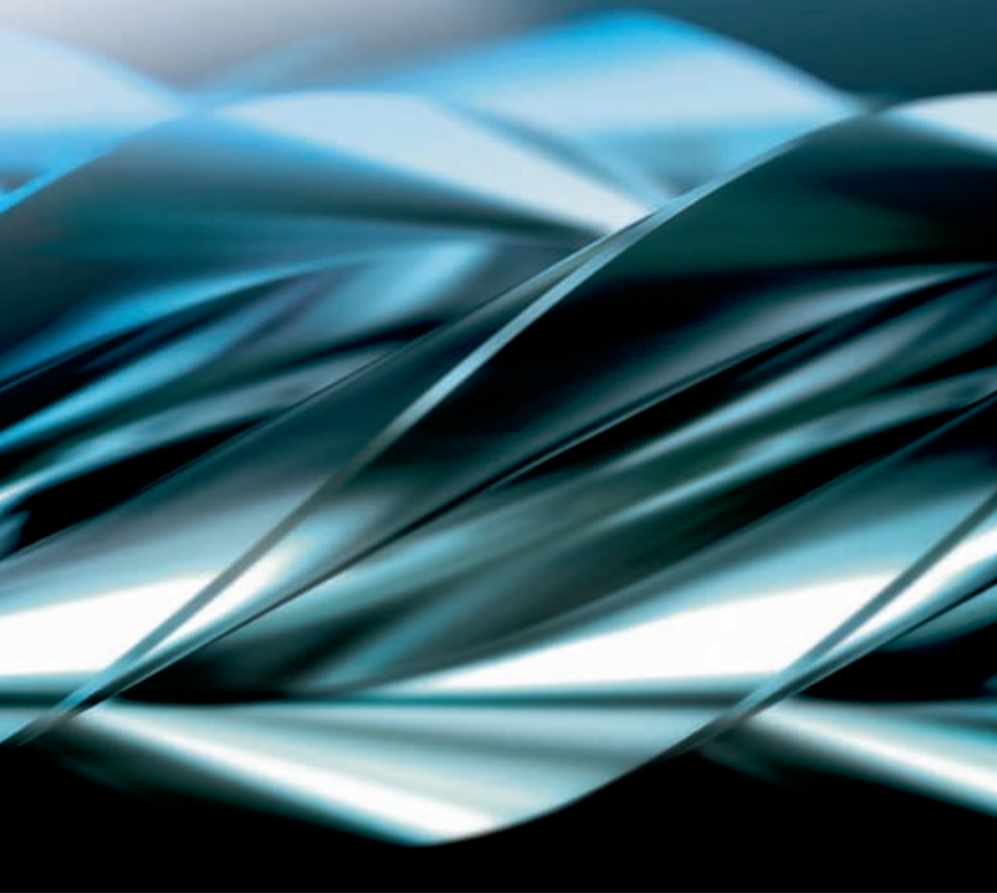
The world's fastest concert hall

XJ offers two audio options, including a stunning 1200W Bowers & Wilkins surround sound system – arguably the most accomplished ever to be integrated into the interior of a car. Featuring the Audyssey MultEQ® audio tuning system, it delivers exceptional clarity through 20 speakers enhanced by the ultimate in digital sound processing technology.



All-round entertainment

The optional sophisticated rear seat entertainment system allows passengers to enjoy TV, DVD, radio or music stored in the car's hard drive or on a connected MP3 Player. The system is operated using a portable touch-screen controller, and includes dual 8-inch LCD screens and up to three sets of independently controllable wireless headphones.



Performance

With a stiff, lightweight body structure, a new generation of high-performance powertrains and transmissions, and the latest chassis technologies, the new XJ delivers an exhilarating driving experience.

Power and refinement

The new XJ offers the choice of four powerful and refined new engines – the most technically advanced Jaguar has ever created. Heading the line-up is the supremely powerful supercharged 5.0 litre V8, available with 375kW in the XJ Supersport, or 346kW in the XJ Portfolio. Jaguar's new flagship engine is partnered by the smooth and responsive 283kW naturally-aspirated V8 version. Completing the range is the formidable 3.0 litre V6 diesel with twin sequential turbochargers, which marries tremendous drive with superb efficiency.



XJ SUPERSPORT



5.0 LITRE V8 SUPERCHARGED



AJ-V8 GEN III



DIRECT INJECTION 375KW 625NM TORQUE





5.0/V8/SC/
0-100/ 4.9

TOP SPEED (LIMITED) 250KM/H

250 KM/H



0-100 6.4 SECS
3.0 LITRE V6 DIESEL
AJ-V6D GEN III S

SIX-SPEED ELECTRONIC AUTOMATIC TRANSMISSION WITH JAGUAR SEQUENTIAL SHIFT™

Power is transmitted through an enhanced version of Jaguar's acclaimed electronically controlled ZF six-speed automatic transmission, featuring a fully-adaptive shift system for smooth gear changes and optimised performance. For maximum driver involvement, gears can also be selected manually using paddles mounted behind the steering wheel.



JAGUARDRIVE SELECTOR™

XJ's automatic transmission is controlled by the JaguarDrive Selector™ - a rotary shift interface that combines precise, intuitive control with leading edge ergonomics and interior design.

Press the pulsing red "Start" button to fire up the engine, and the cylindrical cast alloy JaguarDrive Selector™ rises up into the palm of the driver's hand while the Virtual Instruments and HD Touch-screen initialise.

7.0L/100KM CO₂ 184g/km



ADAPTIVE DYNAMICS AND DYNAMIC STABILITY CONTROL

THE NEW ADAPTIVE DYNAMICS SYSTEM, STANDARD IN ALL XJ MODELS, CONTINUOUSLY VARIES THE SUSPENSION DAMPING TO SUIT THE DRIVING CONDITIONS.

THE SYSTEM CALCULATES ROAD INDUCED BODY MOTIONS 100 TIMES PER SECOND AND SETS EACH DAMPER TO THE APPROPRIATE LEVEL TO MAINTAIN A FLAT AND LEVEL BODY, BRINGING IMPROVED BODY CONTROL AND HANDLING WITHOUT LOSS OF RIDE COMFORT.

A TWO STAGE DYNAMIC STABILITY CONTROL (DSC) SYSTEM COMBINES THE NORMAL ON-OFF SWITCHABLE DSC FUNCTION, WHICH REACTS AS SOON AS IT DETECTS SLIP, WITH TRAC DSC, WHICH ALLOWS MORE SLIP BEFORE INTERVENING - BETTER FOR A MORE SPORTING DRIVING EXPERIENCE.



ACTIVE DIFFERENTIAL CONTROL

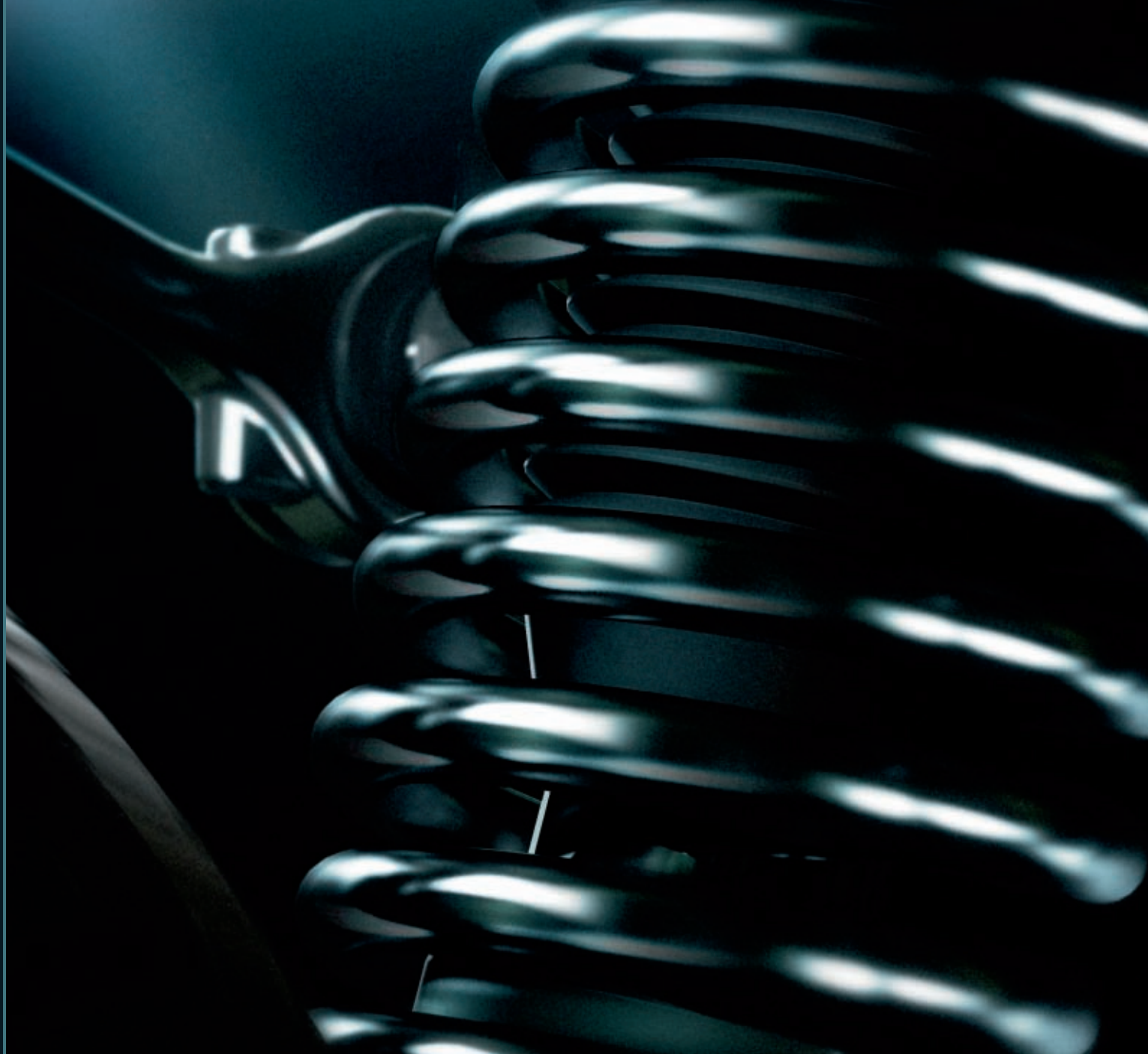
XJ PORTFOLIO AND XJ SUPERSPORT MODELS POWERED BY JAGUAR'S SUPERCHARGED 346KW AND 375KW ENGINES, FEATURE ACTIVE DIFFERENTIAL CONTROL (ADC). ADC OFFERS SUPERIOR ASPHALT AND LOOSE SURFACE TRACTION AND RESULTS IN BETTER VEHICLE PERFORMANCE. IT IS FULLY AUTOMATED, AND CAN VARY ITS LOCKING TORQUE DEPENDENT ON THE PREVAILING SURFACE CONDITIONS, THUS POTENTIALLY IMPROVING STABILITY WHEN REQUIRED.

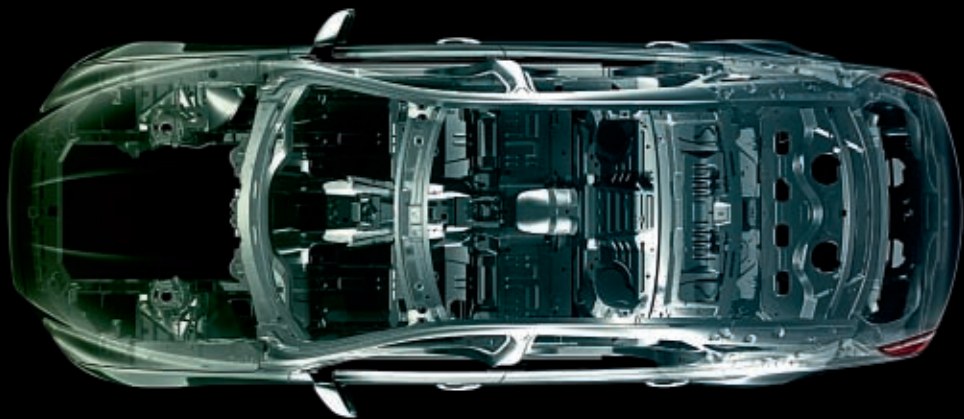
JAGUARDRIVE CONTROL™ WITH DYNAMIC MODE AND WINTER MODE

JAGUARDRIVE CONTROL™ INTERACTS WITH ADAPTIVE DYNAMICS TO OFFER THE DRIVER SELECTABLE MODES FOR DIFFERENT DRIVING CONDITIONS AND MOODS.

IN DYNAMIC MODE, ADAPTIVE DYNAMICS INCREASES BODY CONTROL FOR A SPORTIER FEEL. DYNAMIC MODE ALSO INTERACTS WITH THE MANAGEMENT ELECTRONICS TO GIVE A MORE RESPONSIVE ACCELERATOR PEDAL REACTION AND QUICKER GEARSHIFT RESPONSES. ENGAGING DYNAMIC MODE CAUSES THE VIRTUAL INSTRUMENTS TO RECONFIGURE AUTOMATICALLY - THE DIALS ASSUME A SPORTING RED HUE, AND FEATURE A BOLD GEAR POSITION INDICATOR THAT GLOWS RED AS THE REV LIMITER IS APPROACHED.

WINTER MODE ADDS ANOTHER ELEMENT OF DYNAMIC SUBTLETY. WHERE DYNAMIC MODE OFFERS A MORE SPORTY FEEL, WINTER MODE OFFERS A MORE DAMPED ACCELERATOR PEDAL RESPONSE FOR MORE PROGRESSIVE CONTROL IN SLIPPERY CONDITIONS, WITH BESPOKE SHIFT SETTINGS THAT DELAY AND SOFTEN GEARSHIFTS, AGAIN FOR BETTER CONTROL WITH LOW GRIP.





> JAGUAR.COM.AU

Safety and reassurance

XJ offers a comprehensive range of sophisticated safety systems designed to lessen the risk of an accident, and to help protect occupants both inside and outside the vehicle.

Aluminum body construction

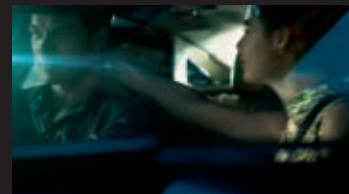
The XJ's bodyshell is constructed from aluminium and magnesium using techniques derived from the aerospace industry. Extruded, pressed and cast aluminium components are riveted, epoxy-bonded, and in specific areas, bolted together to form a strong monocoque structure that combines lightness with exceptional rigidity.

Aluminium body construction makes the new XJ one of the stiffest vehicles in its class. As well as being integral to the car's outstanding performance, it means that less energy needs to be absorbed in the event of a collision and provides a superb platform for structural integrity and vehicle safety.

AIRBAG AND SEAT OCCUPANT SENSING SYSTEM

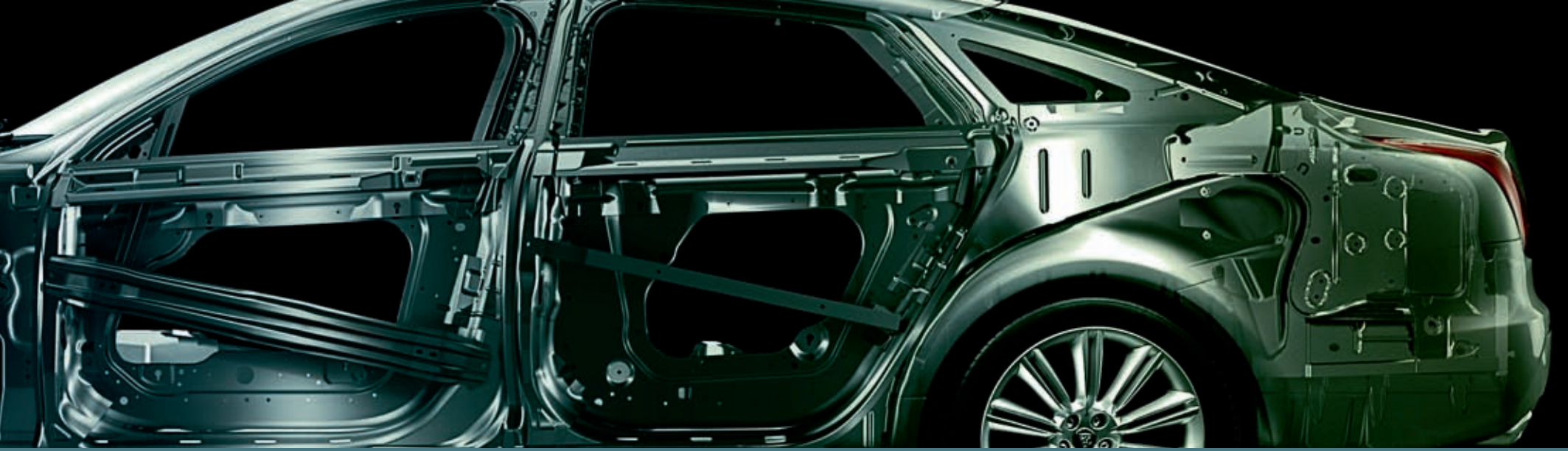
XJ FEATURES DRIVER AND FRONT PASSENGER AIRBAGS, THORAX AIRBAGS MOUNTED IN THE OUTER EDGES OF THE SEAT TO HELP PROTECT AGAINST SIDE IMPACT, AND FULL SIDE-CURTAIN AIRBAGS DESIGNED TO PROVIDE ENHANCED PROTECTION TO BOTH FRONT AND REAR OCCUPANTS.

FOR THE DRIVER AND FRONT SEAT PASSENGER THE FRONT AIRBAGS FEATURE TWO-STAGE DEPLOYMENT. SENSORS ARE DESIGNED TO DETECT THE SIZE AND WEIGHT OF THE OCCUPANT AND THEIR EXACT POSITION IN THE SEAT IN ORDER TO CALCULATE THE FORCE AT WHICH THE AIRBAG IS DEPLOYED.



THE SYSTEM WORKS IN TANDEM WITH PYROTECHNIC FRONT SEAT BELT RETRACTORS - WHICH FEATURE "SOFT LANDING" TECHNOLOGY - AND ARE DESIGNED TO PRE-TENSION THE BELTS AND SOFTEN CONTACT WITH THE FRONT AIRBAGS.

THE POWER ADJUSTABLE FRONT SEATS ALSO FEATURE ANTI-WHIPLASH TECHNOLOGY DESIGNED TO SUPPORT THE HEAD BY MOVING THE HEAD RESTRAINTS FORWARD IN THE EVENT OF A COLLISION.



PEDESTRIAN CONTACT SENSING

THE NEW XJ CAN ALSO HELP PROTECT THOSE OUTSIDE THE CAR, WITH ITS INDUSTRY-LEADING PEDESTRIAN CONTACT SENSING SYSTEM™ AND AUTOMATICALLY DEPLOYABLE BONNET. THE BONNET ITSELF FEATURES A SPECIAL ENERGY-ABSORBING MATRIX DESIGN ON ITS UNDERSIDE AND, IF THE SYSTEM SENSES AN IMPACT WITH A PEDESTRIAN, IT IS DESIGNED TO INSTANTANEOUSLY RAISE THE BONNET THROUGH A SMALL DISTANCE IN A VERY CONTROLLED WAY, TO HELP PREVENT THE PEDESTRIAN'S HEAD FROM CONTACTING HARD POINTS OF THE ENGINE UNDER THE BONNET.

ADAPTIVE CRUISE CONTROL

THE OPTIONAL ADAPTIVE CRUISE CONTROL (ACC) USES MICROWAVE RADAR TECHNOLOGY TO MONITOR THE ROAD AHEAD. IF THE SYSTEM SENSES THAT THE CAR IN FRONT IS MOVING MORE SLOWLY, IT IS DESIGNED TO AUTOMATICALLY EASE OFF THE THROTTLE OR GENTLY APPLY THE BRAKES, IN ORDER TO MAINTAIN A CONSTANT DISTANCE. ONCE THE ROAD AHEAD CLEARS, ACC SMOOTHLY ACCELERATES BACK TO THE PRE-SET SPEED.

ADVANCED BRAKING SYSTEMS

EMERGENCY BRAKE ASSIST (EBA), HAS BEEN DESIGNED TO AUTOMATICALLY DELIVER ADDITIONAL BRAKE PRESSURE TO FULLY ENGAGE THE ANTI-LOCK BRAKING SYSTEM (ABS) SHOULD THE VEHICLE SENSE A RAPID APPLICATION OF THE BRAKE PEDAL. THIS AUTOMATICALLY ALLOWS SHORTER STOPPING DISTANCES WITH IMPROVED STEERING CONTROL SOME TIME BEFORE THE DRIVER ALONE WOULD HAVE ACHIEVED THE SAME EFFECT.

ADVANCED EMERGENCY BRAKE ASSIST WORKS IN TANDEM WITH ADAPTIVE CRUISE CONTROL. THE SYSTEM CALCULATES DISTANCE AND SPEED OF APPROACH TO THE VEHICLE IN FRONT AND PRE-CHARGES THE BRAKES TO MINIMISE IMPACT SPEED IF A COLLISION IS PREDICTED.



BLIND SPOT MONITOR

THE XJ'S OPTIONAL BLIND SPOT MONITOR CAN TAKE MUCH OF THE UNCERTAINTY OUT OF LANE CHANGING. USING RADAR SENSORS TO REMOTELY COVER AREAS THAT CAN'T BE SEEN EITHER DIRECTLY OR BY MIRROR, IT IS DESIGNED TO ALERT THE DRIVER TO OVERTAKING TRAFFIC WITH AN AMBER WARNING ICON IN THE EXTERNAL MIRRORS.



THE ALL NEW XJ COLLECTION

XJ PREMIUM LUXURY

XJ PORTFOLIO

XJ SUPERSPORT

SPECIFICATION



Go online and configure your all new XJ at JAGUAR.COM.AU



XJ PREMIUM LUXURY

3.0 V6 DIESEL

5.0 V8

STANDARD WHEELBASE

LONG WHEELBASE

STUNNING DESIGN, CONTEMPORARY LUXURY MATERIALS INCLUDING SOFTGRAIN LEATHER, AND A HOST OF INTUITIVE TECHNOLOGIES MAKE THE XJ PREMIUM LUXURY AN OUTSTANDING MODEL THAT EXCEEDS EXPECTATIONS AND ESTABLISHES A NEW BENCHMARK FOR ITS CLASS.



INTERIOR SHOWN

JET SOFTGRAIN LEATHER SEATS

OPTIONAL CARBON FIBRE VENEER

JET SOFTGRAIN LEATHER UPPER FACIA AND DOOR TOP ROLLS



EXTERIOR CHOICE

ALLOY WHEELS

Standard



19" Aleutian

Options



18" Meru



19" Toba



19" Toba Polished



20" Kasuga



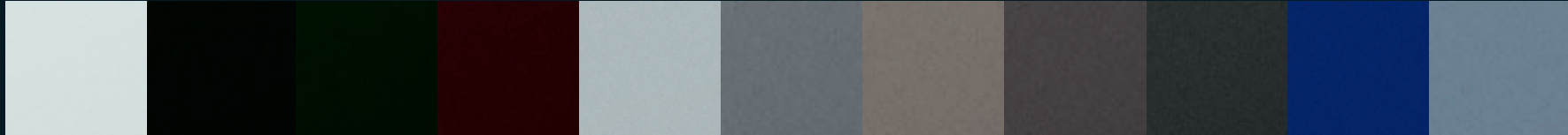
20" Kasuga Polished



20" Orona

EXTERIOR COLOURS

Standard



Polaris White

Ebony

Botanical Green*

Caviar*

Liquid Silver*

Lunar Grey*

Vapour Grey*

Pearl Grey*

Stratus Grey*

Spectrum Blue*

Frost Blue*

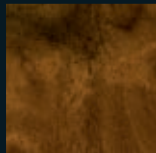
*Metallic paint

(Available until February 2010) (Available from April 2010)

INTERIOR CHOICE

VENEERS

Standard

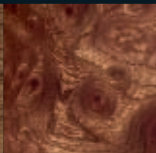


Gloss Burr Walnut

Options



Satin American Walnut



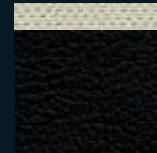
Satin Elm



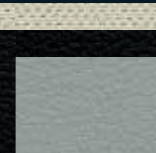
Carbon Fibre

INTERIOR ENVIRONMENT

Standard



Jet seats with Jet upper and Ivory Headlining



Dove seats with Jet upper and Ivory Headlining



Cashew seats with Truffle upper and Canvas Headlining

Option



Ivory seats with Oyster upper and Ivory Headlining

Headlining
Upper facia

Seat Trim
Softgrain
Leather



20" Orona Polished



Headlamps - automatic Xenon with washers and front LED signature lights



Indigo*

Ultimate Black*

Claret*

Cashmere*



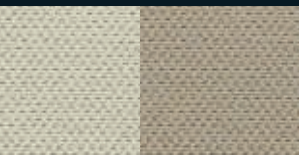
Virtual Instruments



Full colour HD Touch-screen

HEADLININGS

Standard



Ivory

Canvas

SOFTGRAIN LEATHER HEATED FRONT AND REAR SEATS
 JAGUARSENSE™
 VIRTUAL INSTRUMENTS
 FULL COLOUR HD TOUCH-SCREEN
 INTERACTIVE CONTROLS
 INTERACTIVE VOICE
 MEDIA HUB FOR AUDIO AND VIDEO STREAMING
 PHOSPHOR BLUE HALO ILLUMINATION AND INTERIOR MOOD LIGHTING

DUAL ZONE CLIMATE CONTROL
 600W JAGUAR SOUND SYSTEM - 14 SPEAKERS WITH SINGLE SLOT DVD PLAYER
 PANORAMIC ROOF WITH ELECTRIC BLINDS
 HEADLAMPS - AUTOMATIC XENON WITH WASHERS AND FRONT LED SIGNATURE LIGHTS



XJ PORTFOLIO

5.0 V8

5.0 V8 SUPERCHARGED 346 kW
STANDARD WHEELBASE

INSPIRED BY CONTEMPORARY INTERIOR
DESIGN, XJ PORTFOLIO'S RICH SPECIFICATION
AND EXTENSIVE PALETTE OF UNIQUE LEATHER
AND VENEER CHOICES OFFER A LEVEL OF
PERSONALISATION THAT SETS IT APART



INTERIOR SHOWN

LONDON TAN SOFTGRAIN LEATHER SEATS WITH NAVY CONTRAST
STITCH AND PIPING

GLOSS BURR WALNUT VENEER

NAVY SOFTGRAIN LEATHER UPPER FACIA AND DOOR TOP ROLLS



EXTERIOR CHOICE

ALLOY WHEELS

Standard



20" Kasuga

Options



18" Meru



19" Aleutian



19" Toba



19" Toba Polished



20" Amirante

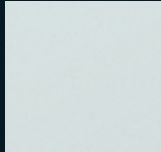
Only available on models with Supercharged engines



20" Kasuga Polished

EXTERIOR COLOURS

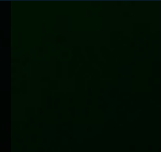
Standard



Polaris White

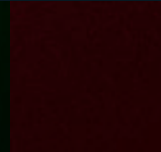


Ebony

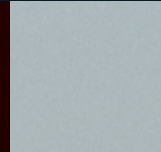


Botanical Green*

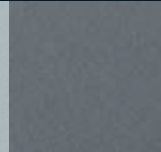
*Metallic paint



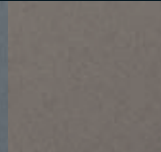
Caviar*



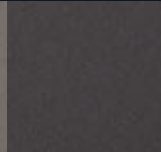
Liquid Silver*



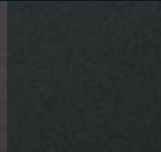
Lunar Grey*



Vapour Grey*



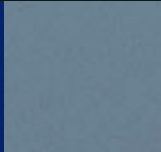
Pearl Grey*



Stratus Grey*



Spectrum Blue*



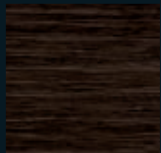
Frost Blue*

(Available until February 2010) (Available from April 2010)

INTERIOR CHOICE

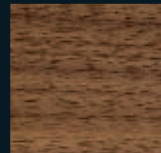
VENEERS

Standard

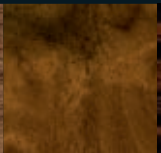


Gloss Rich Oak

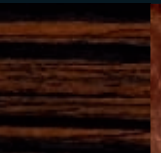
No Cost Options



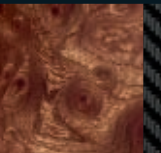
Satin American Walnut



Gloss Burr Walnut



Gloss Figured Ebony



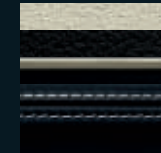
Satin Elm



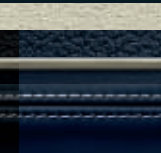
Carbon Fibre

INTERIOR ENVIRONMENT

Standard



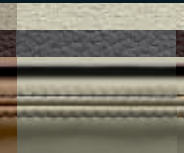
Jet seats with Ivory contrast stitch and piping, Jet upper and Ivory Headlining



Navy seats with Ivory contrast stitch and piping, Navy upper and Ivory Headlining



Cashew seats with Truffle contrast stitch and piping, Truffle upper and Canvas Headlining



Ivory seats with Oyster contrast stitch and piping, Oyster upper and Ivory Headlining



20" Orona

20" Orona Polished



Indigo*

Ultimate Black*

Claret*

Cashmere*



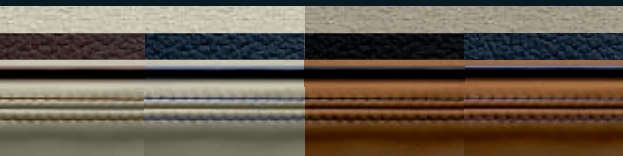
Chrome side power vent



Bowers & Wilkins 1200W premium surround sound system - 20 speakers



Softgrain leather seats with twin needle contrast stitch and embossed leaper



Headlining
Upper fascia

Seat Trim
Softgrain
Leather

Ivory seats with Truffle contrast stitch and piping, Truffle upper and Ivory Headlining

Ivory seats with Navy contrast stitch and piping, Navy upper and Ivory Headlining

London Tan seats with Jet contrast stitch and piping, Jet upper and Canvas Headlining

London Tan seats with Navy contrast stitch and piping, Navy upper and Canvas Headlining

HEADLININGS

Standard



Canvas Jaguar Suedecloth Premium Headlining

Ivory Jaguar Suedecloth Premium Headlining

Jet Jaguar Suedecloth Premium Headlining (Option on Standard Wheelbase only)

FRONT MESSAGE ACTIVE VENTILATED HEATED AND COOLED SOFTGRAIN LEATHER SEATS WITH CONTRAST STITCH, PIPING AND EMBOSSED LEAPER ON HEADRESTS

JAGUAR SUEDECLOTH PREMIUM HEADLINING
ALUMINIUM BOOT RUNNERS

FOUR ZONE AUTOMATIC CLIMATE CONTROL
DUAL VIEW HD TOUCH-SCREEN

REAR CAMERA PARKING AID

ADAPTIVE FRONT LIGHTING WITH INTELLIGENT HIGH BEAM



XJ SUPERSPORT

5.0 V8 SUPERCHARGED 375kW
STANDARD WHEELBASE
LONG WHEELBASE

A UNIQUE AND HIGHLY PERSONAL STATEMENT, XJ SUPERSPORT MATCHES BREATHTAKING PERFORMANCE WITH THE VERY FINEST MATERIALS, EXCEPTIONAL CRAFTSMANSHIP AND EXQUISITE DETAILING TO CREATE THE ULTIMATE EXPRESSION OF POWER AND EXCLUSIVITY



INTERIOR SHOWN

PARCHMENT SEMI ANILINE LEATHER SEATS WITH BORDEAUX
CONTRAST STITCH AND PIPING

GLOSS FIGURED EBONY WITH RIBBON LASER INLAY VENEER

BORDEAUX SOFTGRAIN LEATHER UPPER FACIA AND DOOR TOP ROLLS



EXTERIOR CHOICE

ALLOY WHEELS

Standard

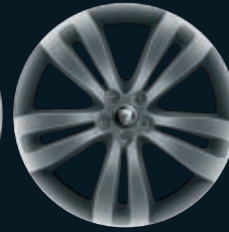


20" Mataiva

Options



19" Aleutian



19" Toba



19" Toba Polished



20" Amirante



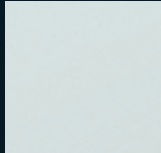
20" Kasuga



20" Kasuga Polished

EXTERIOR COLOURS

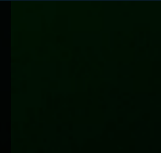
Standard



Polaris White

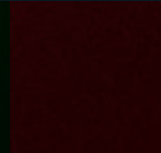


Ebony

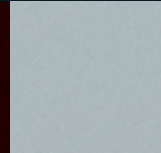


Botanical Green*

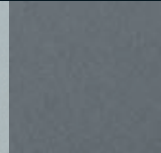
*Metallic paint



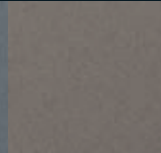
Caviar*



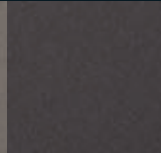
Liquid Silver*



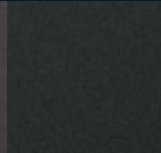
Lunar Grey*



Vapour Grey*



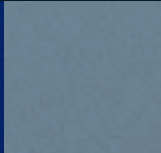
Pearl Grey*



Stratus Grey*



Spectrum Blue*



Frost Blue*

(Available until February 2010) (Available from April 2010)

INTERIOR CHOICE

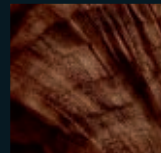
VENEERS

Standard

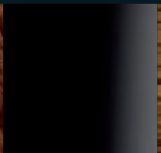


Gloss Rich Oak with Linear Laser Inlay

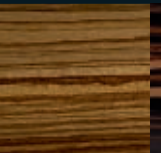
No Cost Options



Gloss Walnut Curl



Piano Black



Satin Zebrano



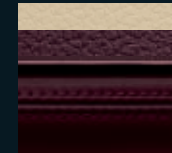
Gloss Figured Ebony with Ribbon Laser Inlay



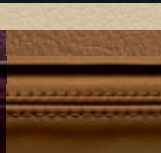
Carbon Fibre

INTERIOR ENVIRONMENT

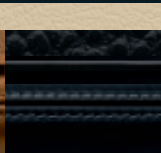
Standard



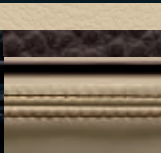
Bordeaux seats with Bordeaux upper and Parchment Leather Headlining



London Tan seats with London Tan upper and Parchment or Jet Leather Headlining



Jet seats with Tonal stitch, Jet Tipped Leather upper and Parchment or Jet Leather Headlining



Parchment seats with Truffle contrast stitch and piping, Truffle Tipped Leather upper and Parchment Leather Headlining



20" Orona

20" Orona Polished



Indigo*

Ultimate Black*

Claret*

Cashmere*



Virtual Instruments - Dynamic Mode



Softgrain leather door panner with twin needle Tonal stitch



Illuminated air vents

HEADLININGS

Standard

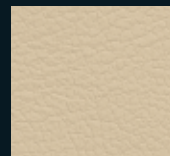


Headlining
Upper fascia

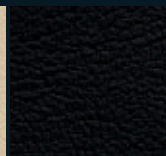
Seat Trim
Semi Aniline
Leather

Parchment seats with Navy contrast stitch and piping. Navy upper and Parchment Leather Headlining

Parchment seats with Bordeaux contrast stitch and piping. Bordeaux upper and Parchment Leather Headlining



Parchment Leather Headlining



Jet Leather Headlining



Mauveine Lined Glovebox on Jet/Jet

GLOVEBOX LINING

SEMI ANILINE LEATHER ACTIVE VENTILATED HEATED AND COOLED SEATS WITH TWIN NEEDLE STITCH AND PIPING
UNIQUE LEATHER HEADLINING
SUPERSPORT SCRIPT SIDE POWER VENT
SIX UNIQUE INTERIOR TRIM CHOICES INCLUDING TIPPED LEATHER OPTION
UNIQUE INTAGLIO



XJ ACCESSORIES

ILLUMINATED SILL TREAD PLATES



PEDAL KIT





CHROME MIRROR CAPS



EXHAUST TAILPIPE FINISHERS



EXTERIOR COLOURS

Polaris White

Ebony

Botanical Green*

Caviar*

Liquid Silver*

Lunar Grey*

Vapour Grey*



Pearl Grey*

(Available until February 2010)

Stratus Grey*

(Available from April 2010)

Spectrum Blue*

Frost Blue*

Indigo*

Ultimate Black*

Claret*

Cashmere*

*Metallic paint
For availability please consult your local Jaguar dealer.



LEATHERS, TRIMS
AND HEADLININGS

Dove Softgrain Jet Softgrain Truffle Softgrain Oyster Softgrain Navy Softgrain Cashew Softgrain Ivory Softgrain London Tan Softgrain



CONTRAST PIPING,
CONTRAST STITCH
AND VENEERS

Jet with Ivory piping and contrast stitch Navy with Ivory piping and contrast stitch Cashew with Truffle piping and contrast stitch Ivory with Oyster piping and contrast stitch Ivory with Truffle piping and contrast stitch Ivory with Navy piping and contrast stitch London Tan with Jet piping and contrast stitch London Tan with Navy piping and contrast stitch Parchment with Bordeaux piping and contrast stitch



Bordeaux
Semi Aniline

London Tan
Semi Aniline

Parchment
Semi Aniline

Jet Semi Aniline

Jet Tipped
Leather

Truffle Tipped
Leather

Canvas Jaguar
Suede cloth
Premium
Headlining

Ivory Jaguar
Suede cloth
Premium
Headlining

Jet Jaguar
Suede cloth
Premium
Headlining

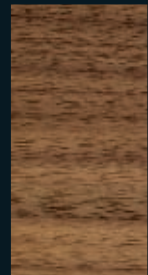
Parchment
Leather
Headlining

Jet Leather
Headlining



Parchment with
Truffle piping and
contrast stitch

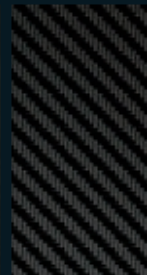
Parchment with
Navy piping and
contrast stitch



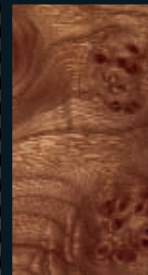
Satin American
Walnut



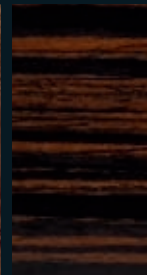
Gloss Burr
Walnut



Carbon Fibre



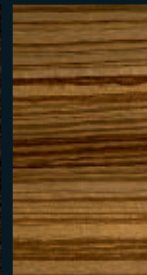
Satin Elm



Gloss Figured
Ebony



Gloss Rich Oak



Satin Zebrano



Piano Black



Gloss Walnut
Curl



Above: Gloss Figured Ebony
with Ribbon Laser Inlay
Below: Gloss Rich Oak with
Linear Laser Inlay

For guidance, please refer to the specific model pages, or see jaguar.com.au
For availability please consult your local Jaguar dealer.

POWERTRAIN AND DRIVING DYNAMICS

6-speed electronic automatic transmission with Jaguar Sequential Shift™
JaguarDrive Control™ - Winter Mode
JaguarDrive Control™ - Dynamic Mode
JaguarDrive Selector™
DSC (Dynamic Stability Control) with Trac DSC mode
Electric Parking Brake (EPB) - drive-away release
Adaptive Dynamics
Cruise Control with Automatic Speed Limiter (ASL)

EXTERIOR FEATURES

Tailpipes - Twin, with chrome finishers
Windscreen - heated with timer
Rear window - heated with timer
Rain sensing windscreen wipers
Headlamps - automatic Xenon with washers and front LED signature lights
Metallic paint
Exterior mirrors - electric adjustment, heated, power-folding, auto-dimming with puddle lamps and memory function
Front parking aid (Includes Touch-screen visual indicator)
Tail lamps - LED
Solar attenuating, hydrophobic and acoustically laminated glass
Rear parking aid (Includes Touch-screen visual indicator)

SAFETY AND SECURITY

3-flash lane change indicators
Remote control central locking
Deadlocking
Drive-away locking
Power boot lid (open and close)
Airbags - front and side (driver and front passenger)
Airbags - side curtain
Front seats - whiplash protection system
Seat belt reminder (front and rear)

WHEELS

Alloy space saver spare wheel*

INTERIOR FEATURES

Front and rear electric windows with one-touch open/close and anti-trap
Panoramic glass roof - tilt/slide front section with electric blinds
Steering column with electric adjustment for reach and height with entry and exit tilt-away
Interior rear view mirror - auto-dimming
Front centre console with illuminated stowage, auxiliary power socket and armrest
3-spoke leather steering wheel
Cup holders - twin, front
Sun visor - driver and front passenger, with illuminated vanity mirrors
Rear coat hooks
Front and rear courtesy footwell lights
Phosphor blue halo illumination and interior mood lighting
Door puddle lamps - front and rear
Approach illumination (automatic via remote)
Jaguar Smart Key System™ with Keyless entry
JaguarSense™ - glovebox opening
JaguarSense™ - overhead light console operation
Driver's foot rest
Intaglio ('Jaguar' script)
Rear seats - centre armrest with twin cup holders

MULTIMEDIA

Virtual Instruments, HD Touch-screen, single slot CD/DVD, Interactive Voice, Interactive Controls, Media Hub including Front Media Interface, Bluetooth® v2.0 audio streaming
Navigation system with HDD mapping

STANDARD ON LONG WHEELBASE

Four zone automatic climate control with air filtration, humidity sensing and four zone temperature control for driver, front passenger and independent control for left and right rear passengers
Illuminated rear vanity mirrors
Rear window sunblind - electric
Rear side window sunblinds - manual

STANDARD FEATURES

Please consult your local dealer for details.
Please refer to the glossary for a more detailed description of features.

*18" Alloy as standard, 19" Alloy on Supercharged.

	PREMIUM LUXURY	PORTFOLIO	SUPERSPORT
POWERTRAIN AND DRIVING DYNAMICS			
3.0 V6 Diesel	●	-	-
5.0 V8 Petrol	●	●	-
5.0 V8 Supercharged Petrol (346kW)	-	●	-
5.0 V8 Supercharged Petrol (375kW)	-	-	●
Active Differential Control (Supercharged Petrol only)	-	●	●
EXTERIOR FEATURES			
Headlamps with Adaptive Front Lighting, cornering lamps and Intelligent High Beam	○	●	●
Rear camera parking aid (includes Touch-screen visual indicator)	○	●	●
SAFETY AND SECURITY			
Adaptive Cruise Control (ACC) with Forward Alert and Advanced Emergency Brake Assist	P	P	P
Blind Spot Monitor	O/P	O/P	O/P
Tyre Pressure Monitoring System (TPMS)	○	●	●
Active Seat Belts - driver and front passenger	P	P	P
INTERIOR FEATURES			
Dual zone automatic climate control with air filtration, humidity sensing and dual zone temperature control for driver and front passenger†	●	-	-
Four zone automatic climate control with air filtration, humidity sensing and four zone temperature control for driver, front passenger and independent control for left and right rear passengers	○	●	●
Air quality sensing with auto recirculation	○	○	○
Rear business trays (Long Wheelbase only)	○	○	●
Front ashtray and cigar lighter	○	○	○
Rear window sunblind - electric (Standard Wheelbase only)	○	○	○

	PREMIUM LUXURY	PORTFOLIO	SUPERSPORT
INTERIOR TRIM			
Jaguar Suedecloth Premium Headlining	P	●	-
Jaguar Suedecloth Premium Headlining - Jet†	P	○	-
Leather Headlining	-	-	●
Premium carpet mat set - front and rear	●	●	-
Supersport carpet mat set - front and rear	-	-	●
3-spoke Softgrain leather heated steering wheel with Jaguar Sequential Shift™ paddles and remote controls for audio system, cruise control, Bluetooth® telephone connectivity and Interactive Voice	●	○	○
3-spoke wood and leather heated steering wheel with Jaguar Sequential Shift™ paddles and remote controls for audio system, cruise control, Bluetooth® telephone connectivity and Interactive Voice*	O/P	●	●
Active ventilated front seats - heated and cooled	○	-	-
Active ventilated front and rear seats - heated and cooled	○	●	●
INTERIOR THEMES			
XJ Premium Luxury interior theme	●	-	-
XJ Portfolio interior theme	○	●	-
XJ Supersport interior theme	-	-	●
Ivory leather trim (with heated and cooled front seats)▲	○	NCO	-
MULTIMEDIA			
Jaguar 600W premium sound system with single slot CD/DVD player	●	-	-
Bowers & Wilkins 1200W premium surround sound system with single slot CD/DVD player	○○	●	●
Digital/analogue television	○	●	●
Dual View functionality and one set WhiteFire® digital wireless headphones▲	○	●	●
Rear Seat Entertainment - dual 8-inch LCD screens (mounted in rear of front headrests) with Rear Media Interface and Touch-screen remote control and two sets WhiteFire® digital wireless headphones▲ ⁱ	○	○	● ⁱⁱ
PACKS			
Driver Assistance Pack	○	○	○

OPTIONAL FEATURES

Please consult your local dealer for details and availability.
Please refer to the glossary for a more detailed description of features.

● Standard ○ Option P Option as part of Pack - Not available NCO No Cost Option

* Wood and leather steering wheel is only available with gloss wood veneers

▲ Linked option

† Standard Wheelbase only

ⁱ Available from March 2010

ⁱⁱ Standard on Long Wheelbase only

▼ POWERTRAIN AND DRIVING DYNAMICS

JAGUAR SEQUENTIAL SHIFT™

Provides the choice of Drive, Sport Automatic or Manual gearshift modes, with one touch paddles mounted behind the steering wheel to control gear changes up and down manually.

JAGUARDRIVE CONTROL™

Interacts with the DSC (Dynamic Stability Control) engine and transmission management systems to change the characteristics of engine mapping, transmission shifts and brake interventions. It offers different modes selectable by a button to optimise the vehicle response depending on driving conditions and style.

WINTER MODE

Softens the responsiveness of the engine and modifies the gear change strategy to maintain optimum traction in icy or slippery conditions. The vehicle performs in a more gentle and controlled manner, allowing more confident progress. When active, Winter Mode selects 2nd gear for pulling away on level ground (no incline). Dials and graphic details change in the Virtual Instruments when Winter Mode selected.

DYNAMIC MODE

Optimises vehicle systems to deliver a more involving driving experience. When selected, Trac DSC is automatically engaged, and engine torque delivery characteristics and gear shift points are modified to further improve responsiveness. When selected while the transmission is in full manual mode, transmission up-shifts are fully controlled by the driver, with no automatic up-shift when the rev limit is reached. Dials and graphic details change in the Virtual Instruments when Dynamic Mode selected.

ADAPTIVE DYNAMICS

Provides the optimum balance between low speed ride comfort and high speed handling precision, analysing body movement, steering and road wheel inputs up to 500 times a second and continuously adjusting the suspension settings through electronically controlled dampers.

ACTIVE DIFFERENTIAL CONTROL

An electronically controlled, active differential with Handling Functionality that limits the slip between the rear wheels to optimise traction and stability in different driving conditions, working in harmony with the Traction, ABS and DSC systems.

CRUISE CONTROL WITH AUTOMATIC SPEED LIMITER (ASL)

In tandem with cruise control, an Automatic Speed Limiter (ASL) allows the driver to select a maximum speed that should not be exceeded.

ADAPTIVE CRUISE CONTROL (ACC)

Uses microwave radar technology to monitor for slower moving traffic and can alert you to potential hazards ahead. It also controls both throttle and brakes to help maintain a constant time gap to the vehicle in front. When the road ahead clears, the system automatically accelerates back to the speed at which you were driving. Forward Alert provides an audible warning if traffic ahead slows.

ADVANCED EMERGENCY BRAKE ASSIST

Is an enhancement to the ACC function. Using the ACC radar, the system calculates distance and speed of approach to the vehicle in front and pre-charges the brakes to minimise impact speed if a collision is predicted. The ACC interacts with the Virtual Instruments to provide the driver with information on driving conditions.

DYNAMIC STABILITY CONTROL (DSC)

Intervenes in demanding driving situations by applying braking to individual wheels and reducing engine torque.

TRAC DSC MODE

Provides a higher intervention threshold for the more enthusiastic driver.

▼ EXTERIOR FEATURES

ADAPTIVE FRONT LIGHTING

Sensors react to the car's speed and steering input, and the system can deflect headlamp beams casting light deeper into corners, and giving added confidence at night. Intelligent High Beam will automatically switch the headlamps to high beam, when sensing preceding, oncoming traffic or street lights, the headlamps will automatically switch to low beam, maximising driver visibility and appropriate beam usage.

BLIND SPOT MONITOR

Uses radar sensors to remotely cover areas that cannot be seen either directly or by mirror, and alerts of overtaking traffic with an amber warning icon in the external mirrors.

REAR CAMERA PARKING AID

Combines a rear-facing camera with the Touch-screen information, it features coloured distance guides and on-screen guidance lines that move according to steering wheel angle to indicate the area into which the car will reverse.

GLOSSARY



▼ SAFETY AND SECURITY

AIRBAG AND SEAT OCCUPANT SENSING SYSTEM

Side airbags, curtain airbags and two-stage driver and front passenger airbags, all controlled by a seat occupant sensing system to ensure they work only when needed. The Anti-Whiplash System, built into the XJ's front seats, and 'soft-landing' technology in the seat-belt retractors soften contact with the airbags in the front.

ACTIVE SEAT BELTS

In a challenging driving situation, the active seat belts tighten and secure occupants into the seat automatically to give the driver an enhanced feeling of security when the situation demands it. As cornering or braking forces are reduced, the electrically-powered belts loosen to normal position.

PEDESTRIAN CONTACT SENSING™

Automatically deployable bonnet system. Industry-leading system that senses an impact between a pedestrian and the front of the car, it instantaneously raises the bonnet through a small distance in a very controlled way, to help prevent the pedestrian from contacting hard points under the bonnet.

POWER BOOT LID WITH CUSTOMISABLE HEIGHT ADJUSTMENT

The boot lid is opened and closed electronically, with either a single press on the remote key, a switch inside the boot lid or by the external bumper switch. The boot lid is easily programmed to open to your required height.

▼ INTERIOR FEATURES

JAGUARSENSE™

An electronic control system that operates the front overhead console lights and opening of the glovebox by a light touch.

JAGUAR SMART KEY SYSTEM™

With the Jaguar Smart Key in your pocket or bag, the car automatically unlocks as you pull the door handle. Simply push the ignition button to start the engine. Upon leaving, simply press a button on the door handle to lock the car or use the Jaguar Smart Key.

DUAL ZONE CLIMATE CONTROL

With humidity control, air filtration and dual temperature control for driver and front passenger.

FOUR ZONE CLIMATE CONTROL

Adds independent automatic temperature control for left and right rear passengers in addition to the front dual zone.

▼ MULTIMEDIA

VIRTUAL INSTRUMENTS⁽²⁾

Virtual Instruments 12.3-inch screen with TFT (Thin Film Transistor) technology that replaces a traditional instrument cluster. Virtual information display to include speed, rpm, distance, trip computer functionality and key information for navigation, audio, telephone - includes normal, Winter and Dynamic Mode displays.

HD TOUCH-SCREEN⁽²⁾

8-inch full colour HD Touch-screen display that controls major functions simply and intuitively including audio, climate control, Bluetooth® v2.0 telephone connectivity, trip computer and navigation. This allows mechanical buttons to be reduced to a discreet panel below the navigation screen.

HD DUAL VIEW TOUCH-SCREEN^{(1) (2)}

Allows driver and passenger to see two completely different views on the same 8-inch full colour Touch-screen, enables access to different functions at the same time. Driver enabled access to Touch-screen controls, audio and navigation. Passenger has WhiteFire® digital wireless headphones to watch TV or DVD via Dual View controls.

INTERACTIVE CONTROLS

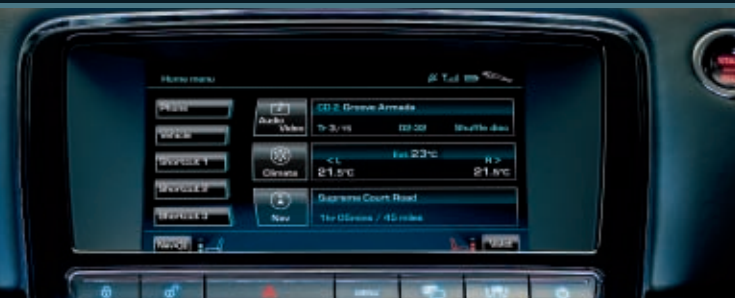
Two 5-way steering wheel mounted controls that allow the driver to manage frequently-used functions via Virtual Instrument menus without taking hands off the wheel or looking at Touch-screen menus. Additional controls below the steering wheel spokes operate Cruise Control, telephone and Interactive Voice functions.

INTERACTIVE VOICE^{(2) (3)}

Uses 'Say What You See' technology to guide the user to the correct commands. Voice control of audio, automatic climate control, Bluetooth® v2.0 telephone connectivity, navigation, and Touch-screen displays with note pad facility. When in operation, as well as audible prompts, all commands appear in the Virtual Instruments.

MEDIA HUB

The Media Hub allows various devices to be connected to the car, whether this is wirelessly via the Bluetooth® v2.0 audio streaming or through the Front Media Interface for audio and video. Located in the centre console storage box, a docking panel includes a 3.5mm auxiliary jack plug socket, a 12-volt power supply, plus two USB connectors that allow connectivity with a wide range of USB devices. The dock is compatible with all iPod's® from Generation 3 to the latest iPod touch®. It will also support any USB mass-storage device such as a pen driver or memory stick, and MP3 players with USB connectivity. Full function control of iPod® or MP3 is available through the HD Touch-screen menus enabling easy search by artist, album title or song title, genre and playlists.



▼ MULTIMEDIA (CONTINUED)

SINGLE SLOT CD/DVD PLAYER⁽¹⁾

Single slot CD/DVD player which is capable of playing video and audio discs. File formats include Windows Media Audio (WMA), AAC and MP3.

FRONT MEDIA INTERFACE

Part of Media Hub. Allows the connection of an iPod®, MP3 player or two USB Mass Storage Devices to the in-car sound system, each independently controlled via the 8-inch Touch-screen and steering wheel mounted controls.

REAR MEDIA INTERFACE

Part of Media Hub. Allows the connection of an iPod®, MP3 player or one USB Mass Storage Device in the rear when Rear Entertainment is fitted.

BLUETOOTH® V2.0 AUDIO STREAMING

A Bluetooth® equipped Jaguar enables hands-free control of your mobile phone at any time when the phone is in the car, through either the Touch-screen or Virtual Instruments. Bluetooth® v2.0 provides the ability to stream audio content, and full function control enables easy track selection. Bluetooth® v2.0 is compatible with a selected range of mobile phones from a number of different manufacturers, including BlackBerry® - ask your dealer or visit jaguar.com for more details.

JAGUAR 600W PREMIUM SOUND SYSTEM⁽¹⁾

600W with AM/FM radio featuring EON, RDS, PTY, TA and single slot CD/DVD player, MP3 disc compatibility, a hard disk drive (HDD) for storage of up to 10 CD's of uncompressed music and 14 speakers. Controlled through the Touch-screen and Interactive Controls. Powered by a dedicated 12-channel Class D, DSP amplifier featuring Audyssey MultEQ® audio equalisation and Dynamic Volume Control, including 2 subwoofers and 2 8-inch front door woofers. In addition to the cabin audio output this system features 3 additional audio channels which can be accessed through the WhiteFire® digital wireless headphones when either Dual View or Rear Seat Entertainment is specified.

BOWERS & WILKINS 1200W PREMIUM SURROUND SOUND SYSTEM⁽¹⁾

As Jaguar premium sound system, with either Dolby® Pro Logic® IIx or DTS™ Neo 6, with 20 speakers including 2 subwoofers and 2 front door woofers. In addition to the cabin audio output this system features 3 additional audio channels which can be accessed through the WhiteFire® digital wireless headphones when either Dual View or Rear Seat Entertainment is specified. The headphone system includes Dolby® Headphone Surround when listening to the DVD source.

NAVIGATION SYSTEM WITH HDD MAPPING⁽²⁾

HDD based system, providing faster access to data including, postcode entry, destination entry on the move (Europe only), voice guidance, voice control input, RDS and TMC (Traffic Messaging Channel)/Dynamic Route Guidance, accessed through Touch-screen control system. The Navigation system can be set to interact with the Virtual Instruments, on approach to a junction or turning navigation information will be displayed in the information dial in the Virtual Instruments.

REAR SEAT ENTERTAINMENT⁽¹⁾

State of the art digital Rear Entertainment system with dual 8-inch screens controlled by a rear Touch-screen remote control that docks and charges in the rear centre armrest. The system also includes a Rear Media Interface, that allows connectivity with a wide range of USB devices. With Rear Seat Entertainment fitted rear passengers can watch TV, DVD or streamed video either via the Rear Media Interface. The system includes dual WhiteFire® digital wireless headphones and transmitter.

GLOSSARY



▼ INTERIOR THEMES

XJ PREMIUM LUXURY INTERIOR THEME

Softgrain leather seats with driver's and passenger's electric adjustment (16/12 way) including fore/aft, recline, cushion tilt, height, 2-way lumbar support and 3-position driver memory. Variable heated with non-perforated leather or perforated leather when active ventilation fitted. Softgrain leather on upper fascia, door top roll, arm rests and centre console lid.

XJ PORTFOLIO INTERIOR THEME

Softgrain leather seats with embossed leapers on headrests, contrast stitch and piping. Driver's and passenger's electric adjustment (20/20 way) including fore/aft, recline, cushion tilt, height, 2-way lumbar support, 3-position driver and passenger memory, front massage and adjustable bolster. Active Ventilated Seats - heated and cooled. Softgrain leather on upper fascia, door top roll, door pannel, door armrest and centre console lid with twin needle stitch, and Jaguar Suedecloth Premium headlining.

XJ SUPERSPORT INTERIOR THEME

Semi Aniline leather seats with embossed leapers on headrests offered in six different interior themes. Driver's and passenger's electric adjustment (20/20 way) including fore/aft, recline, cushion tilt, height, 2-way lumbar support. 3-position driver and passenger memory, front massage and adjustable bolster - Active Ventilated Seats - heated and cooled. Softgrain leather on upper fascia, door top roll, door pannel, door armrest, seat valance, centre console lid and end cap, with twin needle stitch, and leather headlining. Includes Tipped leather on Jet and Truffle colourways, and Mauveine lined glovebox with Jet colourway.

LONG WHEELBASE

Long wheelbase models feature additional space in the rear cabin with 1121mm of rear legroom, 134mm more than the standard wheelbase. Additional features as standard include four zone automatic climate control with independent temperature controls for rear seat passengers, illuminated rear vanity mirrors, rear window electric sunblind and rear passenger window manual sunblinds. Rear business trays, finished in hand crafted veneer, are also standard on XJL Supersport, and optional on XJL Premium Luxury.

DRIVER ASSISTANCE PACK

Adaptive Cruise Control with Forward Alert, Blind Spot Monitor, Advanced Emergency Brake Assist, Active Seat Belts - driver and passenger.

▼ WHEELS

WHEEL SPECIFICATIONS

Meru 8.0J x 18" (front) 9.0J x 18" (rear) alloy wheels
Aleutian 9.0J x 19" (front) 10.0J x 19" (rear) alloy wheels
Toba 9.0J x 19" (front) 10.0J x 19" (rear) alloy wheels
Toba Polished 9.0J x 19" (front) 10.0J x 19" (rear) alloy wheels
Amirante 9.0J x 20" (front) 10.0J x 20" (rear) alloy wheels
Kasuga 9.0J x 20" (front) 10.0J x 20" (rear) alloy wheels
Kasuga Polished 9.0J x 20" (front) 10.0J x 20" (rear) alloy wheels
Orona 9.0J x 20" (front) 10.0J x 20" (rear) alloy wheels
Orona Polished 9.0J x 20" (front) 10.0J x 20" (rear) alloy wheels
Mataiva 9.0J x 20" (front) 10.0J x 20" (rear) alloy wheels

- (1) Different DVDs exist in different regions. Please consult your dealer for details of which countries are covered by the DVD player supplied with your vehicle.
- (2) The navigation system must always be used in conditions that will not affect the driver's ability to drive safely or affect the safety of other road users.
- (3) Interactive Voice - please consult your dealer for language availability.





TECHNICAL SPECIFICATIONS

STANDARD WHEELBASE

Overall length 5,122mm
Overall height 1,448mm
Wheelbase 3,032mm
Front track 1,626mm

Overall width inc. mirrors 2,110mm
Overall width with mirrors folded in 1,894mm
Rear track 1,604mm
Rear legroom 987mm

LONG WHEELBASE

Overall length 5,247mm
Overall height 1,448mm
Wheelbase 3,157mm
Front track 1,626mm

Overall width inc. mirrors 2,110mm
Overall width with mirrors folded in 1,894mm
Rear track 1,604mm
Rear legroom 1,121mm

ENGINES		3.0 Litre V6 Diesel S AJ-V6D GEN III S		5.0 Litre V8 Petrol AJ-V8 GEN III		5.0 Litre V8 Petrol Supercharged 346kW AJ-V8 GEN III		5.0 Litre V8 Petrol Supercharged 375kW AJ-V8 GEN III	
Cylinders/Valves per Cylinder		6/4		8/4		8/4		8/4	
Bore/Stroke	mm	84/90		92.5/93		92.5/93		92.5/93	
Capacity	cc	2,993		5,000		5,000		5,000	
Maximum power	kW	202		283		346		375	
@rev/min		4,000		6,500		6,000-6,500		6,000-6,500	
Maximum torque	Nm	600		515		575		625	
@rev/min		2,000		3,500		2,500-5,500		2,500-5,500	
Compression ratio:1		16		11.5		9.5		9.5	
Transmission		6-speed automatic		6-speed automatic		6-speed automatic		6-speed automatic	
PERFORMANCE (manufacturers estimates)									
Acceleration	0-100 kph-sec.	6.4		5.7		5.2		4.9	
Top speed	kph	250 (limited)		250 (limited)		250 (limited)		250 (limited)	
FUEL CONSUMPTION ⁽¹⁾									
		Standard Wheelbase	Long Wheelbase	Standard Wheelbase	Long Wheelbase	Standard Wheelbase	Standard Wheelbase	Long Wheelbase	Long Wheelbase
Urban	l/100km	9.6	9.7	17	17	18.3	18.3	18.3	18.3
Extra urban	l/100km	5.6	5.8	8.2	8.2	8.7	8.7	8.7	8.7
Combined	l/100km	7.0	7.2	11.3	11.3	12.1	12.1	12.1	12.1
Carbon dioxide emissions	g/km	184	189	264	264	289	289	289	289
Tank capacity	ltr approx.	82	82	82	82	82	82	82	82
WEIGHT ⁽²⁾									
		Standard Wheelbase	Long Wheelbase	Standard Wheelbase	Long Wheelbase	Standard Wheelbase	Standard Wheelbase	Long Wheelbase	Long Wheelbase
Weight	kg	1,796	1,813	1,755	1,773	1,892	1,892	1,915	1,915
Gross vehicle weight	kg	2,365	2,365	2,300	2,335	2,365	2,365	2,390	2,390

Turning circle – 12.3m and 12.7m for Long Wheelbase. Boot volume – 520 litres VDA

⁽¹⁾ All Fuel economy data has been measured in accordance with current Australian ADR 81/02 test procedures. Under normal use a vehicle's actual fuel consumption may differ from that achieved through the test procedure, depending on driving technique, road and traffic conditions, environmental factors, and vehicle condition. If in any doubt, please consult your dealer; the information given is correct at the time of publication.

⁽²⁾ Please consult your dealer for details of charges associated with option fitment. Weights reflect vehicles to standard specifications. Optional extras increase weight.

The XJ ownership experience.

SERVICE, ASSURANCE, AND PEACE OF MIND ARE ALL PART OF THE PRIDE OF OWNING YOUR NEW XJ.

THE JAGUAR ACCESSORY RANGE

Enabling you to personalise your car, to create a driving experience that is even more individually rewarding. All Jaguar accessories are tested rigorously for safety and durability in the most arduous of climates and conditions.

A comprehensive range of styling options, interior and exterior accessories, enabling you to tailor your XJ to suit your personal style.

BECAUSE ONLY THE BEST WILL DO

An official Jaguar dealer can ensure that Jaguar trained, specialist technicians, with access to the full range of Jaguar approved parts and tools, will always be on hand to guarantee that every fitting, or repair, is carried out exactly the way Jaguar intended. Your Jaguar dealer can also supply and fit Jaguar approved accessories to personalise and add to the practicality and style of your XJ model.

JAGUAR ROADSIDE ASSISTANCE†

All Jaguar vehicles purchased in Australia benefit from complimentary Jaguar Roadside Assistance service for the length of the new car warranty. This covers you Australia-wide 24 hours per day, every day.

WARRANTY*†

3 year/100,000km* mechanical warranty together with a 3 year unlimited kilometre Paint Surface Warranty and 6 year unlimited kilometre Corrosion (Perforation) Warranty.

JAGUAR MAGAZINE†

Bringing to life Jaguar's racing heart, Jaguar Magazine is our owner publication. It combines features on our legendary performance, the inside track on our products and company, along with news and events from the world of Jaguar.

JAGUAR.COM.AU

Dedicated to you and your XJ, the interactive jaguar.com.au website features helpful tools such as the dealer locator, model specifications – allowing you to see the car tailored to your specification and colour – and price lists; the latest information on all the Jaguar models and a fascinating look into the passion and legacy that infuse the Jaguar name.

FREE SCHEDULED SERVICE

3 year/100,000 kilometre* free scheduled service programme (wear and tear items not included).**

*Whichever is the earliest.

**Wear and tear items include battery, tyres, oils and additives.

†Terms and conditions apply. Please contact your Jaguar dealer for more information.





IMPORTANT NOTICE

Jaguar Cars Limited is constantly seeking ways to improve the specification, design and production of its vehicles and alterations take place continually. Whilst every effort is made to produce up-to-date literature, this brochure should not be regarded as an infallible guide to current specifications. Jaguar Australia reserves the right to alter these specifications at any time. This brochure does not constitute an offer for the sale of any particular vehicle. Distributors and dealers are not agents of Jaguar Cars Limited and have absolutely no authority to bind Jaguar Cars Limited by any express or implied undertaking or representation. Illustrations in this brochure may include optional extras.

Comparisons are based on manufacturer's own data and testing.

ENVIRONMENTAL NOTICE

Jaguar Cars Limited has a vision of being amongst the world's leading companies in demonstrating progress towards sustainability. We aim to do this by contributing to a better quality of life, with corporate citizenship at the very heart of our company. Environmental responsibility is a core value in Jaguar, and it is our policy to continually improve our environmental standards in all areas of business activity.

This brochure is produced using certified FSC mixed sources material from well managed forests and is manufactured under a strict ISO 14001 environment system. 10% of this material is recovered fibre, diverting waste from landfill.



Mixed Sources

Product group from well-managed forests, controlled sources and recycled wood or fiber
www.fsc.org Cert no. TT-COC-002370
© 1996 Forest Stewardship Council

The Bluetooth® word mark and logos are owned by the Bluetooth SIG, Inc. and any use of such marks by Jaguar Cars Limited is under license.

iPod and iPod touch are trademarks of Apple Inc., registered in the U.S. and other countries.

BlackBerry® is a trademark of Research In Motion Limited and is registered in the U.S. and may be pending or registered in other countries.

Dolby® is a registered trademark of Dolby Laboratories Licensing Corp and any use of such marks by Jaguar Cars Limited is under license.

DTS™ is a registered trademark of DTS Inc. and any use of such marks by Jaguar Cars Limited is under license.

Audyssey MultEQ® is a registered trademark of Audyssey Laboratories, Inc. and any use of such marks by Jaguar Cars Limited is under license.

WhiteFire® is a registered trademark of Unwired Technology LLC and any use of such marks by Jaguar Cars Limited is under license.

Jaguar Australia Locked Bag 2213
North Ryde NSW 1670
Phone: 1800 450 683 or 02 9020 1400
Fax : 02 9020 1794
jaguar.com.au

Printed in England JLM/37/02/34/0110

© Jaguar Australia 2009. This brochure may not be reproduced without the express permission of the copyright owner.

