

» EXPLORE EVERYTHING WRANGLER HAS TO OFFER WITH THIS DETAILED BUYER'S GUIDE. THIS IS WHERE YOU'LL FIND THE EXACTING SPECIFICATIONS, AUTHENTIC JEEP® BRAND SYSTEMS, AND DETAILED INTERIOR FEATURES THAT CAN GIVE YOU PERMISSION TO GO ANYWHERE, DO ANYTHING.™

SPECIFICATIONS

POWERTRAIN

Engine	3.6L Pentastar® V6	2.8L DOHC I-4 Turbo CRD
Displacement (cu cm)	3,604	2,777
Power (kW @ rpm)	209 @ 6,350	147 @ 3,600
Torque (Nm @ rpm)	347 @ 4,300	410 @ 2,600-3,200
Manual transmission	347 @ 4,300	460 @ 1,600-2,600
Automatic transmission	347 @ 4,300	460 @ 1,600-2,600
Fuel System	Sequential multipoint, electronic fuel injection	Direct Injection, Common-Rail 1,600 bar
Fuel Economy - Combined, Urban, Extra-urban (L/100km)		
Manual 2-door	11.4/16.2/8.7	7.1/8.3/6.5
Manual 4-door	11.7/16.4/8.9	8.3/9.6/7.5
Automatic 2-door	11.6/16.5/8.8	8.1/9.7/7.1
Automatic 4-door	12.0/16.9/9.1	8.8/10.3/7.9
Transmission	6-speed manual with overdrive (NSG370), synchronised in all gears, multirail shift system with top-mounted shift lever Std. on Sport & Rubicon®, not avail. on Overland®	
	5-speed automatic with overdrive (W5A580), electronic governor, electronically controlled converter clutch Opt on Sport & Rubicon, Std. on Overland	

ELECTRICAL SYSTEM

Alternator	3.6L V6/2.8L CRD Auto/2.8L Man. _____ 160A/180A/220A	
Battery	3.6L V6/2.8L CRD _____ 600/825 CCA, maintenance-free	
Engine cooling	On-demand, 2-speed electric	

FOUR-WHEEL-DRIVE SYSTEM (transfer case)

Command-Trac® MP24i: Includes off-road skid plate, part-time, 2-speed, with manual shift-on-the-fly, 2.72:1 low-gear ratio	Std. — Sport and Overland
Rock-Trac® MP24i: Includes off-road skid plate, part-time, 2-speed, with manual shift-on-the-fly, 4.0:1 low-gear ratio	Std. — Rubicon®

GEAR RATIO/CRAWL RATIO (1 manual transmission, standard axle ratio)

Model	First Gear	Transfer Case (4LO)	Axle	Crawl
Rubicon	4.46	4.00	4.10	73.1
Sports/Overland	4.46	2.72	3.73	49.7

BODY/SUSPENSION/CHASSIS (2-door/4-door)

Suspension live solid axles, 5-link front/rear, coil springs, leading arms, track/stabiliser bars, and front steering damper \_\_\_\_\_ Std.  
Shock absorbers high-pressure gas charged monotube \_\_\_\_\_ Std.  
Sway Bar Disconnect System, front axle remote electronically activated \_\_\_\_\_ Std. Rubicon  
Steering Type \_\_\_\_\_ Power, reticulating ball with cross-bar linkage and damper  
Overall Steering Ratio 2-door/4-door \_\_\_\_\_ 16.7/14.7:1  
Turning Diameter (kerb-to-kerb, with 245/75R16 tyres, in metres) \_\_\_\_\_ 10.4/13.1  
2-door/4-door \_\_\_\_\_ 3.2/2.5  
Steering Turns (lock-to-lock), 2-door/4-door \_\_\_\_\_ 3.2/2.5  
Brake System  
Heavy-duty 4-wheel disc, power-assisted, 332mm vented front/316mm solid rear \_\_\_\_\_ Std.  
Electronic Stability Control<sup>(2)</sup> Four-wheel anti-lock, with on and off-road calibrations, four-channel, active wheel-speed, vehicle-speed, steering-wheel-angle, yaw-rate, and lateral-acceleration sensors, vehicle stability management with 3-stage activation switch, All-Speed Traction Control (ASTC), Brake Assist, Electronic Roll Mitigation (ERM) and Electronic Brake Distribution \_\_\_\_\_ Std.  
Parking Brake Type \_\_\_\_\_ Drum-in-hat, off-road rated



CAPACITIES/WEIGHTS/TOWING (kg unless otherwise specified)

Mid-Mounted Fuel Tank (includes off-road skid plate) (litres)	2-door/4-door (3.6L V6) _____ 70.4/85.2
2-door/4-door (2.8L CRD) _____ 66.6/85.2	
Base Kerb Weight	2-door (3.6L V6) _____ 1,741 - 1,924
2-door (2.8L CRD) _____ 1,858 - 2,000	
4-door (3.6L V6) _____ 1,908 - 2,073	
4-door (2.8L CRD) _____ 1,998 - 2,173	
Maximum Gross Vehicle Weight Rating	3.6L V6 2-door/4-door _____ 2,268/2,540
2.8L CRD 2-door/4-door _____ 2,506/2,585	
Maximum Towing Capacity (when properly equipped)	2-door/4-door _____ up to 1,000 <sup>(3)</sup> /up to 2,300 <sup>(3)</sup>
Tongue Load Limit	2-door/4-door _____ up to 100 <sup>(3)</sup> /up to 230 <sup>(3)</sup>

EXTERIOR DIMENSIONS (mm unless otherwise specified)

Wheelbase	2-door/4-door 2,424/2,947
Overall length	2-door/4-door 4,223/4,751
Overhang	2-door front/rear 508/505
	4-door front/rear 230/223
Overall Width	2-door/4-door 1,865/1,840
Track	front/rear 1,572/1,572
Height	soft top/hardtop 1,865/1,840
Ground Clearance	2-door front axle/rear axle _____ 230/223
4-door front axle/rear axle _____ 228/220	
Approach Angle, 2-door/4-door _____ 35° / 35°	
Breakover Angle, 2-door/4-door _____ 22° / 18°	
Departure Angle, 2-door/4-door _____ 28° / 28°	

OPTIONS

CAPABILITY	Wrangler		Wrangler Unlimited	
	Sport	Overland	Rubicon	Overland
<b>Front Axle</b> Next generation Dana 44 heavy-duty solid		*	*	*
Next generation Dana 30 solid	*	*	*	*
<b>Rear Axle</b> Next generation Dana 44 heavy-duty solid		*	*	*
<b>Axle Ratio</b> 4.10:1		*	*	*
<b>Differentials</b> Tru-Lok® front and rear, electronic remote locking		*	*	*
<b>Four-Wheel-Drive System</b> Command-Trac® MP24i, manual, part-time, shift-on-the-fly transfer case		*	*	*
Rock-Trac® MP24i OR, manual, part-time, shift-on-the-fly transfer case; 4:1 low-gear ratio		*	*	*
<b>Powertrain</b> 3.6 V6 engine with 6-speed manual transmission	*	*	*	*
3.6 V6 Pentastar® engine with 5-speed automatic transmission	O	O	O	O
2.8 DOHC I-4 Turbo CRD with 5-speed automatic or 6-speed manual <sup>(6)</sup>	O	O		
<b>Rock Rails</b> Black, painted steel, heavy-duty, protective, body-mounted		*	*	*
<b>Sway Bar Disconnect</b> Electronically controlled, front		*	*	*
<b>Skid Plates</b> Protective; fuel tank (2.5 mm) and transfer case (3.5 mm)	*	*	*	*
Transmission (4mm) (packaged with automatic transmission)	P	P	P	P
<b>EXTERIOR</b>				
<b>Fender Flares</b> Black, moulded-in-colour	*	*	*	*
Body-color	*	O	O	O
<b>Doors</b> Removable, <sup>(5)</sup> full-framed metal with power windows (packaged with Renegade Pack)	P	*	P	*
<b>Steps</b> Tubular side steps, diamond plate surface pattern (packaged with Renegade Pack)	P	*	P	*
<b>Headlamps</b> , automatic-on system	*	*	*	*
<b>Tyres</b> 245/75R17 Goodyear, Wrangler Silent Armor, OWL all-terrain	*	*	*	*
255/70R18 Bridgestone Dueler BSW all-terrain	*	*	*	*

EXTERIOR continued	Wrangler		Wrangler Unlimited	
	Sport	Overland	Rubicon	Overland
<b>Lighting</b> Halogen headlamps, manual levelling system	*	*	*	*
<b>Fog lamps</b> front and rear bumper integrated	*	*	*	*
<b>Mirrors</b> power heated foldaway	*	*	*	*
<b>Tops</b> Sunrider® folding soft top with sunroof feature	*	*	*	*
Body-colour hardtop		O		O
Dual Top Group with Freedom Top™ three-piece modular fibreglass and Sunrider® soft top (packaged with Renegade Pack)	P	*	P	*
<b>INTERIOR</b>				
<b>Air Conditioning</b> with automatic temperature controls	*	*	*	*
<b>Lighting</b> Rear cargo with on/off-switch	*	*	*	*
<b>Electronic Vehicle Information Centre (EVIC)</b> Equipped with customer programmable features including language, metric & imperial measures, door locks, remote/illuminated entry, headlamp and wiper functions, service intervals, compass, temperature display and trip computer	*	*	*	*
<b>Floor Mats</b> (2-door) Front, carpeted	*	*	*	*
<b>Floor Mats</b> (4-door) Front and rear, carpeted	*	*	*	*
<b>Remote Keyless Entry</b>	*	*	*	*
<b>Seating Trim</b> Cloth	*	*	*	*
Leather		O		O
<b>Seats - Front</b> Low-back buckets with adjustable head restraints, driver manual adjustment (std on all)	*	*	*	*
<b>Seats - Rear</b> Fold and tumble removable bench with 2 head restraints	*	*	*	*
60/40 split-folding bench with 3 head restraints		*		*
<b>Heated Front Seats</b> (Packaged with leather trim)	*	P	*	P
<b>Steering Wheel</b> Leather-wrapped, includes speed control	*	*	*	*
<b>SAFETY AND SECURITY</b>				
<b>Air Bags</b> <sup>(1)</sup> Advanced multi-stage driver and front-passenger and supplemental side seat-mounted for front outboard occupants	*	*	*	*

SAFETY AND SECURITY continued	Wrangler		Wrangler Unlimited	
	Sport	Overland	Rubicon	Overland
<b>Brakes</b> 4-wheel disc anti-lock brake system (ABS)	*	*	*	*
<b>Electronic Stability Control<sup>(2)</sup></b> Includes Brake Assist, All-speed Traction Control (ASTC), Electronic Roll Mitigation (ERM), Trailer Sway Control (TSC), Hill Start Assist (HSA) and Brake Lock Differentials (BLD)	*	*	*	*
<b>Hill Descent Control (HDC)</b> (packaged with automatic transmission)	P	P	P	P
<b>Sentry Key</b> Anti-theft engine immobiliser	*	*	*	*
<b>Tyre Pressure Monitoring Display</b> Displayed in EVIC	*	*	*	*
<b>UCONNECT™ MULTIMEDIA</b>				
<b>Media Centre 135</b> AM/FM/CD/MP3 radio with audio jack (Packaged with Renegade Pack)	*	*	*	*
<b>Media Centre 230</b> 6CD/DVD/MP3 radio with audio jack (Packaged with Renegade Pack)	P	O	P	O
<b>Media Centre 731N</b> CD/DVD/HDD/NAV radio with 16.5 cm touch screen, GPS Navigation, <sup>(3)</sup> 40GB hard drive (4,250 song capacity), Uconnect Phone, <sup>(4)</sup> and audio jack	O	O	O	O
<b>Audio Systems</b> Six speakers	*	*	*	*
Seven Alpine® speakers including subwoofer and 368-watt amplifier (Packaged with Renegade Pack)	P	*	P	*
<b>Uconnect Voice Command</b> Hands-free calling with Address Sync <sup>(5)</sup> Bluetooth <sup>(6)</sup> and remote USB port	*	*	*	*
<b>PACKAGES</b>				
<b>Renegade Pack</b> Media Centre 230 6CD/DVD/MP3 radio with audio jack, Seven Alpine speakers including subwoofer and 368-watt amplifier, deep tint sunscreen glass, Dual Top Group and tubular side steps	O		O	

(1) Always sit properly in the seat with the seat belt fastened. Always observe the passenger air bag indicator lamp to determine if the Occupant Classification System (OCS) is appropriate. Children 12 and under should always be in the backseat correctly using an infant or child restraint system or the seat belt positioned correctly for the child's age and weight. (2) No system, no matter how sophisticated, can repeal the laws of physics or overcome careless driving actions. Performance is limited by available traction, which snow, ice and other conditions can affect. When the ESC warning lamp flashes, the driver needs to use less throttle and adapt speed and driving behaviour to prevailing road conditions. Always drive carefully, consistent with conditions. Always wear your seat belt. (3) Driving with doors off is for off-road use only. (4) Wrangler 2-door diesel available as customer order only. (5) Never program while driving. GPS mapping may not be detailed in all areas or reflect current road regulations. See dealer for details. (6) Must use Bluetooth® compatible phone. (7) Requires Uconnect Phone. (8) Be sure to follow all instruction in Owner's Manual for removal of top, doors and lowering of windshield. Driving with doors off and windshield down is for off-road use only. (9) Be sure to follow all instructions in Owner's Manual for trailer towing. For specific details, discuss your plans with your Jeep® dealer, who will help you select the right equipment to meet your specifications. All product illustrations and specifications are based upon current information at the time of publication approval. Although descriptions are believe correct, accuracy cannot be guaranteed. Chrysler Group LLC reserves the right to make changes from time to time, without notice or obligation, in prices, specifications, colours, materials and to change or discontinue models. See your dealer for details. Jeep, Wrangler, Mopar, Overland, Rubicon, Command-Trac, Freedom Top, Rock-Trac, Tru-Lok and the Jeep Grille are registered trademarks and Uconnect is a trademark of Chrysler Group LLC. All rights reserved.

Jeep is a registered trademark of Chrysler Group LLC.



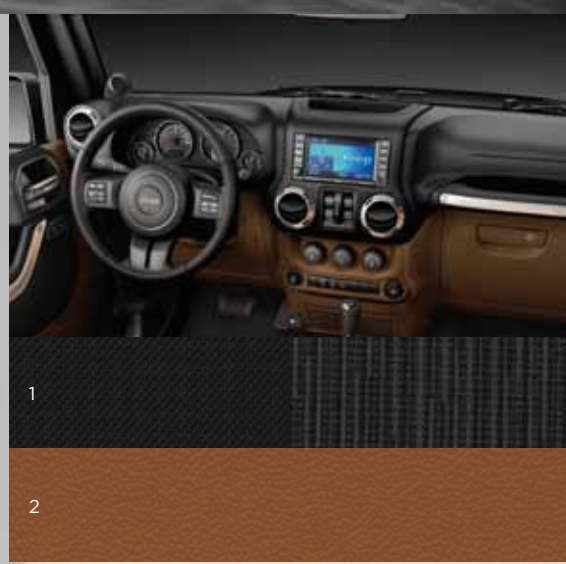
WRANGLER BUYER'S GUIDE



INTERIOR TRIM



- 1 Sedosa cloth/Jeep Hex cloth — Black (Standard on Sport)
- 2 Sedosa cloth/Rivet cloth — Black with Light Slate Gray accent stitching (Standard on Rubicon™)
- 3 McKinley Leather Trim — Black (Optional on Rubicon and standard on Overland)



- 1 Sedosa cloth/Rivet cloth — Black with Dark Saddle with accent stitching (Optional on Rubicon)
- 2 McKinley Leather Trim — Dark Saddle
- 2 accent stitching (Optional on Rubicon and Overland)

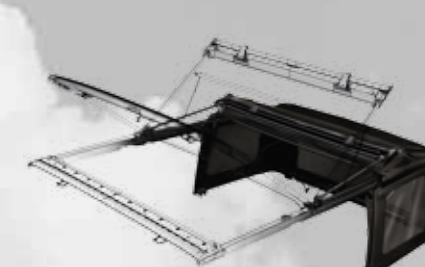
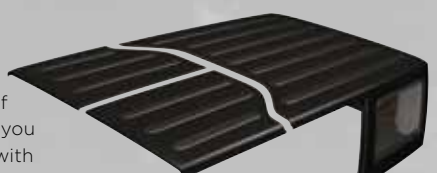
INTERIOR DIMENSIONS

2-door/4-door models (mm unless otherwise specified)  
Seating Capacity  
2-door front/rear \_\_\_\_\_ 2/2 Adults  
4-door front/rear \_\_\_\_\_ 2/3 Adults  
Head Room (with hardtop)

2-door Front/Rear	_____ 1,069/1,035
4-door Front/Rear	_____ 1,075/1,025
Leg Room	
2-door Front/Rear	_____ 1,039/880
4-door Front/Rear	_____ 1,039/921
Shoulder Room	
2-door Front/Rear	_____ 1,415/1,514
4-door Front/Rear	_____ 1,415/1,448
Hip Room	
2-door Front/Rear	_____ 1,394/1,100
4-door Front/Rear	_____ 1,393/1,390

TOPS FREEDOM TOP® HARDTOP

Strong and secure ride. Enjoy the best of both hardtop and soft top worlds when you choose the Dual-Top Group (Packaged with Renegade Pack on Sport standard on Rubicon and Overland).

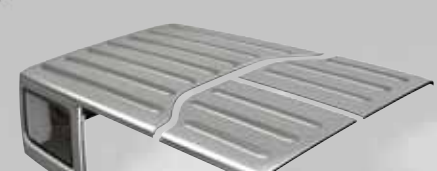


SUNRIDER® SOFT TOPS

Utilises a special three-ply material that is quiet, watertight and easy to fold and tuck away. Standard on all Wrangler models is the exclusive Sunrider Soft Top in Black.

COLOUR-KEYED FREEDOM TOP HARDTOP

The Overland has matching body-color hardtop (Optional on Rubicon).



WHEELS



- 17-Inch Moab Cast Aluminum Painted Sparkle Silver Wrangler Sport (Standard)
- 17-Inch Polished Mineral Gray Wrangler Rubicon (Standard)
- 18-Inch Polished Sparkle Silver Wrangler Overland (Standard)
- 18-Inch Polished Aluminum Wrangler Overland (Optional)

DOORS



FULL-FRAMED DOORS

Removable, with power windows and door locks. Map pockets with mesh net to ensure wash-out capability. Aluminum-forged hinges are used on both Wrangler and Wrangler Unlimited

COLORS



Deep Cherry Red Crystal Pearl (Limited Availability)





Jeep®