	<h1>TSB-Local</h1>	Model	Sportage [KM]()
		Group	Body (Interior and Exterior)(91)
		TSB No.	KCE10-91-P320-KM;C21VA
Subject Sportage (KM) - Anticorrosive Treatment for Rear Floor Members	Published	3/10/2011	
	TSB Type	Service Action	
	Area & Distributor	U.K (C21VA)	

1. Description

This bulletin provides details of a range of Sportage (KM) vehicles that may not have been sufficiently treated with anticorrosion wax during production in the rear floor side and cross members.

Follow the repair procedure as detailed in the 'Service Procedure' below using the products listed in the 'Parts Information'.



2. Applicable Vehicles

- **Model:** Sportage (KM)
- **Applicable production date range:** From May. 27, 2004 to Sep. 14, 2009
- **Applicable VIN range:** See attached VIN list.

3. Parts Information

Parts Required

These parts will be initially automatically issued, for additional parts order as required from Mobis using the part numbers quoted.

Part Name	Part Number	Figure	Comments
Fender bolt mounting tape	8419133000		Order qty 2 pieces for each vehicle. 24 pieces will be included in the auto issue.
Hole tape	841912D000		Order qty 1 piece for each vehicle. 12 pieces will be auto issue.

Cavity Wax	WS0920893081		An initial quantity of 4 tins will be auto issued. 360ml per vehicle (1 tin 500ml) keep surplus for next repair.
Spray Lance	WS0920891081		Auto issue qty 1 (clean out after each use)
Sealer Brush - Nylon	WS0920069330		Auto issued qty 1
Bond and Seal	WS0928901003		One tube will be auto issued. 60ml per vehicle. (one tube 300ml) Keep surplus for next repair.
Stone Guard - Black	WS0920892071		One tin will be auto issued 50ml per vehicle (one tin 500ml). Keep surplus for next repair.

4. Operation Code And Time

OP CODE	OP NAME	OP TIME	NATURE	CAUSE
100013R0	Anticorrosive Treatment for Rear Floor Members	0.7 M/H	N56	C05

Warranty claims must be processed immediately following the repair.

All Campaign claims must be entered via the Global Warranty Management System (GWMS) using the following process.

1. From the home page of the GWMS select the 'Claim Process' tab.

2. Select from the Claim Process Menu (LH toolbar) the 'Claim Create' option.
3. Enter the VIN and 'click' on the 'Inquiry' icon.
4. When the system has loaded the VIN, double click on the VIN.
5. From the Campaign list click on the corresponding campaign number.
6. Complete the blank fields on the preformed claim and select the correct operation code from the drop down menu applicable to the repair carried out.
7. **Enter the sublet value into the field provided, this is a fixed amount of £9.86 per claim. (this value is to cover the cost of the Wurth consumables).**
8. Click on 'save' and then 'submit'.

5. Service Procedure

CAUTION:

There are three separate area's that require treatment, the total amount for each vehicle is 360ml of cavity wax.

Left Rear =120ml

Right Rear =120ml

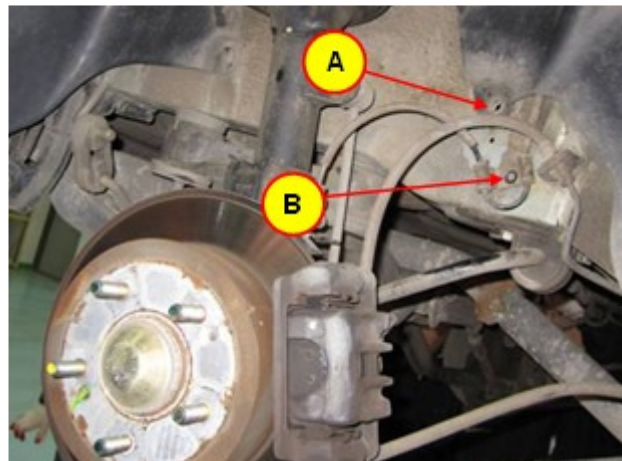
Cross member = 120ml

Apply the cavity wax to the right and left sides and the cross member, keeping the surplus for the next car.

Spraying Cavity Wax onto the left and right Inside of Rear Floor Side Members

1. Remove the rear wheels from the vehicle and then remove the fastener (A) holding the wheel guard to the rear floor side member.

1.2 Remove the ABS wheel speed sensor wire mounting bolt (B).



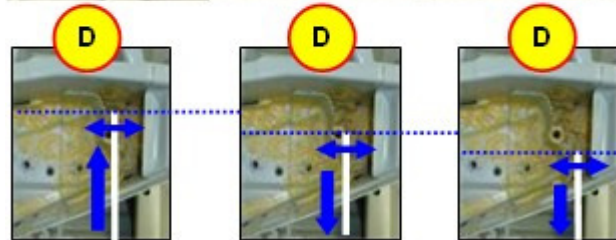
1.3 Spray the cavity wax onto the inside (bottom panel) of the rear floor side member through the wheel guard fastener hole using the spray lance (C) supplied, according to the procedure described in 1.3.1 to 1.3.3 below.



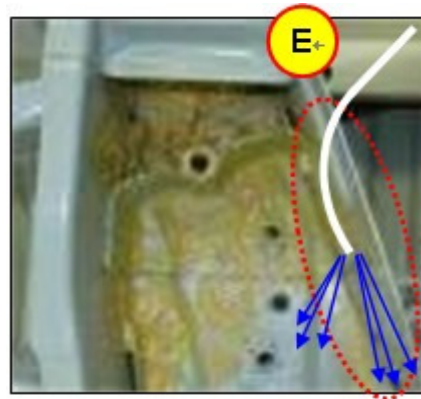
1.3.1 Spray the cavity wax evenly onto the inside of the rear floor side member by moving the nozzle tip back and forth and right and left.



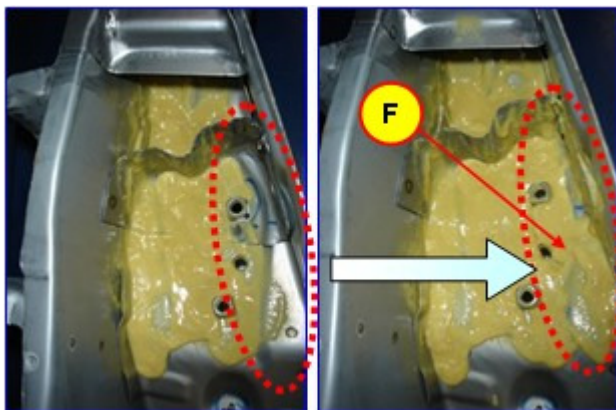
D: Rear floor side member section



1.3.2 Push the nozzle tip deeper into the side member to apply wax evenly throughout the panel as shown in the photo (E). Spray the cavity wax by moving the nozzle tip back and forth and right and left.



1.3.3 Spray the cavity wax to the end of the outbound panel (F), swing the nozzle tip right and left.



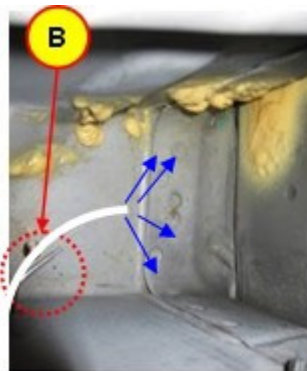
1.3.4 Repeat the process on the other side as described in steps 1 to 1.3.3 above.

2. Spraying Cavity Wax onto the Inside of Rear Floor Cross Member 120ml.

Left side of the rear floor cross member

2.1 Spray the cavity wax into the left side of the rear floor cross member according to the procedure described below.

2.1.2 Locate the hole (A) for inserting the spray lance.



2.1.3 Spray the cavity wax evenly into the outbound panel by moving the spray lance tip (B) back and forth and right and left as shown in the images above.

Right side of the rear floor cross member

For diesel vehicles

2.1.4 Locate the hole (C) for inserting the spray lance and spray the cavity wax through the bolt hole in the same way as the left side of the rear floor cross member (2.1 to 2.1.3)

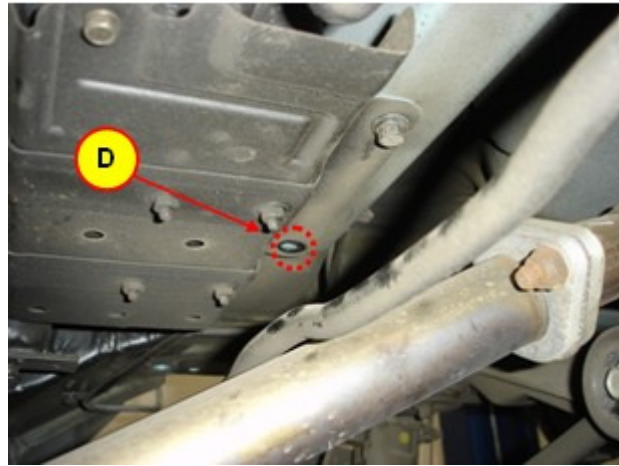


For gasoline vehicles

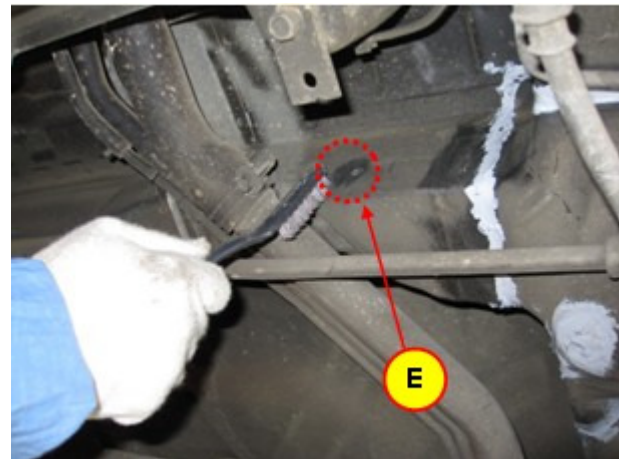
2.1.5 Remove the canister mounting bolt (D) and spray the cavity wax through the bolt hole in the same way as the left side of the rear floor cross member. (2.1 to 2.1.3)

Note:

Clean out the spray lance for use on the next vehicle



2.1.6 Clean around the hole (E) in the rear floor cross member (shown in 2.1.4) with a wire brush and then attach the supplied hole tape to the hole.



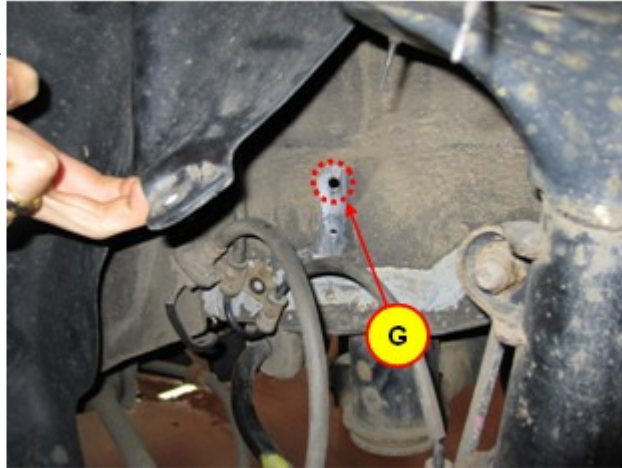
3. Sealing Operation

3.1 Apply sealer to the welded joints on both the outer sides of the rear floor side member as shown below and apply stone guard to the new seal and immediate surrounding area.



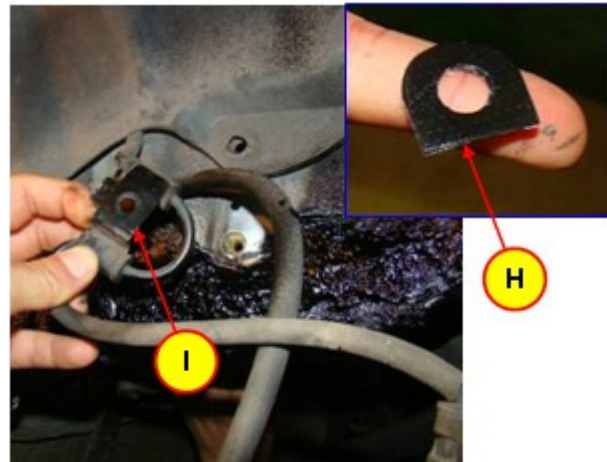
The images above show the area for resealing, use a wire brush to clean the existing sealer and surrounding area of any dirt and debris. Apply new sealer and stone guard as shown in the images both above in 3.1 and below in 3.1.2 and 3.1.3

3.1.2 Apply the sealer to the wheel guard mounting hole (G) to prevent ingress of water through the hole. Apply stone guard over the newly applied sealer and surrounding area.

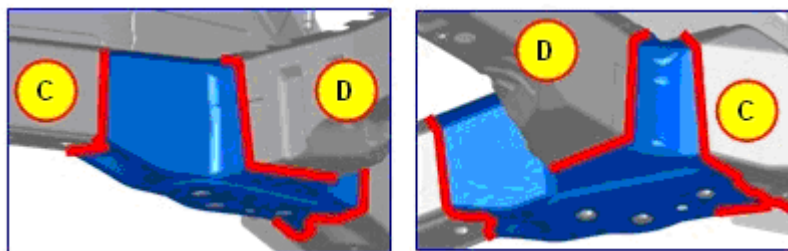


3.1.3 Attach the fender bolt mounting tape (H) to the back of the ABS wheel speed sensor holder (I) and reinstall the holder.

Repeat the above sealing operation to the opposite side.



3.2 Carry out a full visual inspection of the welded joints between the rear floor side and cross members as shown below. C shows the side members and D the cross member.



If the sealer is intact and complete no further action is necessary. Do not attempt to remove the existing sealer.

If there are local areas of missing sealer, clean and reseal the affected area only and spray with the Stone Guard.

The following information and images are for guidance should you need to seal the welded joints as shown in red on the diagram 3.2 above.

3.2.1 Blow dirt or dust off the areas to be sealed using an air gun and clean the area with a wire brush.

3.2.2 Apply the sealer and finish of the seal by brushing the sealant into the joint using the nylon sealer brush supplied.



3.2.4 Apply stone guard to the newly sealed area.

