

CT

CT 200h

CT



Overseas model shown.

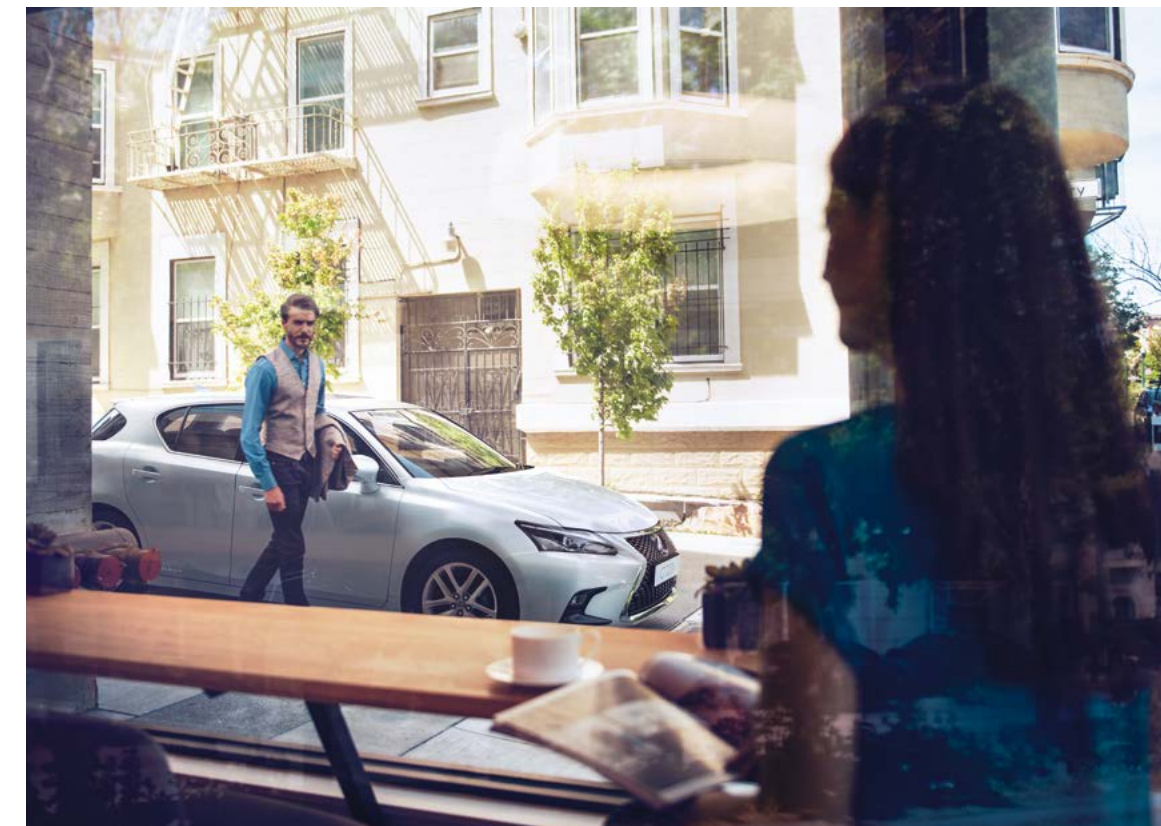


CT	»	P 2
EPISODE 6	»	P 11
TAKUMI	»	P 41
COLOURS & TRIMS	»	P 42
LEXUS OWNERSHIP SOLUTIONS	»	P 49
BENEFITS OF ENCORE	»	P 51
SPECIFICATIONS	»	P 52



Ristorante D&N







CONCEPT



The CT 200h premium compact distills the Lexus philosophy into a car sized to suit city life. Designed for driving fun, you'll enjoy the outstanding agility and elegant ride of a very special hybrid.

» EPISODE



The CT 200h premium compact hybrid was created with the aim of delivering driving you can truly enjoy. The front profile captures the essence of the Lexus philosophy, with a sharply defined appearance that imprints itself in your heart at a glance. The styling blends supple with sharp elements that both harmonise and contrast with each other. Each time you get in, you'll discover unique Lexus details.

You'll also experience direct steering response that enhances the enjoyment of the basics of performance, driving and turning, together with refined ride comfort that elevates the element of fun. The CT 200h's meticulously-engineered driving characteristics invite you to fully enjoy the feeling of being at one with the car.



DESIGN



The CT 200h's lines trace a beautiful silhouette that is bold yet precise, and an interior enriched by Lexus' aesthetic sense, right down to the details. For drivers, its design truly embodies the pleasure and fun of hands-on driving.



» EPISODE



EXTERIOR

The dynamic front profile with its wide stance and low centre of gravity is complemented by the sharp rear garnish. The distinctive design exudes presence, inviting you to enjoy an aggressive approach to driving.



INTERIOR

The low sporty seating position and spacious layout let you concentrate on driving without changing your line of sight or posture. The result is an open feeling combined with the pleasant sensation of being enveloped.

PERFORMANCE



The CT 200h is designed to deliver a feeling of oneness between car and driver. Its agile performance is all about excitement, whether you're driving long straights that stretch out before you or through tight corners. The Lexus Hybrid Drive extracts the full potential of the motor and engine to deliver dynamic excitement. You'll enjoy the pleasure of becoming one with the car without any hesitation.

3

» EPISODE



LEXUS HYBRID DRIVE

Hybrid transmission

The Lexus Hybrid Drive's electric motor, generator and power split device are all housed in the hybrid transmission. Here, the two forces of the system - electrical and mechanical power - are combined using continuously variable gear ratios to produce seamless performance.



Advanced compact battery

The Lexus Hybrid Drive features a high-output Ni-MH (Nickel-Metal Hydride) battery controlled by sophisticated energy management software. Located under the rear luggage area, without compromising interior space, the battery is constantly recharged by the vehicle's operation and requires no external charging.

Power control unit

Located in the engine compartment, the groundbreaking power control unit is the brain of the Lexus Hybrid Drive and controls the allocation of power resources to help optimise efficiency at all times.



High output electric motor

The electric motor works together with the engine to boost acceleration, and is the sole source of power in EV-Drive Mode. Generating instantaneous and linear torque, it provides excellent power output.*

Exhaust heat recovery

This compact unit helps warm up the 1.8-litre engine more quickly. Fitted to the exhaust system between the engine and catalytic converter, it allows the engine to switch off earlier and more often in cooler weather, leading to a reduction in fuel consumption and emissions.*

1.8-litre 4-cylinder engine

Featuring Start/Stop capability, EGR (Exhaust Gas Recirculation) and VVT-i (Variable Valve Timing-intelligent) technologies, the ultra-smooth Atkinson Cycle engine delivers exceptional fuel efficiency and significantly reduced emissions.*



Performance dampers

Performance dampers in both the front and rear further enhance the driver's feeling of oneness with the car. In addition to significantly sharpening the vehicle's handling characteristics by quickly absorbing body pliancy and minuscule vibrations that occur while driving, they enhance ride comfort and quietness. The result is exceptional all-round performance that's very responsive, together with a sophisticated ride.

Aerodynamics

The CT 200h has class-leading aerodynamics, thanks to its low bonnet, long roofline and rear spoiler/diffuser/fins. A look underneath this breakthrough compact reveals more, with aerodynamic engine and fuel tank covers and surfboard-like fins that provide good stability. This attention to detail not only enhances dynamic performance and handling, but also contributes to fuel efficiency and reduces wind noise.



Drive mode select

The CT200h has four selectable drive modes. EV-Drive Mode* provides whisper quiet, emission-free progress when using only electric power. Eco Mode and Normal Mode combine engine and electric power for relaxed higher speed driving. Sport Mode delivers a more dynamic driving experience.

FEATURES



The CT 200h's refined utility is meticulously crafted for your enjoyment of driving fun. It invites you to go on a drive that will set your heart beating.



» EPISODE



Each detail in the CT 200h embodies the unique spirit of Lexus. At start-up, the LED DRLs (Daytime Running Lights) emit a sharp L-shaped line of light that creates a powerful impression. A detailed L-shaped pattern on the lens surface creates an appearance that is simultaneously transparent and three-dimensional, signalling that its Lexus identity is embedded into every aspect of its design. The LED rear combination lights also emit an L-shaped line of light and feature

a radial, L-shaped pattern on the lens surface. The cockpit design supports focused driving with a large, easy-to-read display and Remote Touch controls that enable operation of navigation*, audio, and air-conditioner functions without changing your line of sight or posture. Each time you get into the CT 200h, you'll feel the essence of Lexus in every detail.



Bi-Beam LED headlights

The CT 200h features low- and high-beam LED headlights, together with LED DRLs that illuminate in an L-shape. LEDs use less energy, last longer and activate more quickly than conventional bulbs.



LED rear combination lights

LEDs are used for the tail lights, brake lights, back-up lights, rear fog lights, rear turn signal lights, and rear side markers. The array of LEDs helps to make the CT 200h highly visible to following traffic.



Rear bumper

The wing-shaped rear lower garnish is finished with metallic silver paint[^], creating a sporty look with a low centre of gravity.



Hybrid emblem

The CT 200h is very environmentally friendly, producing low carbon dioxide emissions. Bearing all the quality hallmarks of Lexus, it sets the standards for premium compacts.

Moonroof

The power tilt and slide glass moonroof lets the desired amount of fresh air and light into the CT 200h. One-touch operation is quick and convenient, while a manually-operated sunshade provides shade as required.





Optitron meters/10.3-inch EMV (Electro Multi-Vision) display

The Optitron meters incorporate a 4.2-inch colour TFT (Thin Film Transistor) multi-information display. In Sport Mode, the lighting switches from blue to red, and the Hybrid System Indicator changes to a tachometer. The multi-information display is linked with the EMV display to provide audio information, notification of incoming hands-free phone calls, and a simple navigation[^] display, among other information. The 10.3-inch EMV display offers full-screen display of maps and other useful information without obscuring information needed by the driver, even when displaying the menu and map at the same time.

Leather-accented steering wheel

The three-spoke, leather-accented-wrapped steering wheel has a sporty design. Easy-to-operate integrated switches give the driver control over audio, hands-free calls, and other functions without the need to take their hands off the wheel. They also enable switching of the information displayed on the multi-information display.

Remote Touch/arm pad

Remote Touch revolutionises interaction with the EMV display screen. Shaped to fit comfortably in the hand, it reacts intuitively to driver or front seat passenger commands and is as easy to use as a computer mouse. The soft-touch arm pad provides gentle support for your arm or elbow while operating the Remote Touch.



Luggage space

The CT 200h's luggage space provides an unexpected combination of roominess and utility for a compact hybrid. The low position of the hybrid battery expands the amount of space available for luggage, with room for a golf bag or other large item with the rear seatbacks upright. In addition, the 60/40 split fold-down rear seatbacks create a deep, flat space, contributing to a car that can accommodate your sense of fun in various situations.

Mark Levinson® Premium Surround Sound System*

The 13-speaker system is tailored to the specific acoustic properties of the cabin. Delivering 7.1-channel digital surround sound, it provides a home theatre experience for enjoying DVDs.

Lexus CT Premium Sound System

Speakers in the 10-speaker system feature bamboo charcoal resin diaphragms, natural materials that contribute to realising an excellent sound space with a rich presence.



Mark Levinson® Premium Surround Sound System*

Lexus CT Premium Sound System

SAFETY



The CT 200h's agile performance is underpinned by active and passive safety measures that utilise advanced technologies to deepen your peace of mind.



» EPISODE



LEXUS SAFETY SYSTEM +

Pre-Collision System*

When the millimeter-wave radar and monocular camera detect a collision with a pedestrian or vehicle ahead is likely, it alerts the driver using a buzzer and on the multi-information display, and activates pre-collision brake assist when the driver depresses the brake pedal. If the driver cannot depress the brake pedal, it activates the pre-collision brakes to help avoid a collision or mitigate the impact force.



LDA (Lane Departure Alert) with Steering Control^

LDA with Steering Control alerts the driver with a buzzer and on the multi-information display if the system believes the vehicle is about to cross the lane markings without using the turn signals, and assists steering to avoid lane departure. In addition, Vehicle Sway Warning monitors steering operation and the vehicle's position within a lane to detect vehicle sway due to driver inattention or drowsiness, and alerts the driver by a buzzer and on the multi-information display.*1

AHB (Automatic High Beam System)^

AHB helps safe driving at night by instantly switching from high to low beam when the lights of an oncoming vehicle, or the tail lights of a vehicle in front, are detected.*1



Active Cruise Control^

In addition to maintaining a constant speed, Active Cruise Control uses the millimeter-wave radar and monocular camera to help detect a vehicle driving ahead and maintain an appropriate distance between vehicles at speeds over 40km/h.



Body structure to help reduce injury to pedestrians

The bonnet is optimised to help enhance excellent energy absorption in a collision with a pedestrian. In addition, the windshield wiper area is designed to help reduce pedestrian injuries in an accident.

*The Pre-Collision System (with Pedestrian Detection) is a driver assist feature only and not a substitute for safe driving practices. Driver remains responsible at all times for safe driving. Pedestrians may not be detected in certain conditions including low and harsh light, where partially obstructed from view, where clothing or movement obscures or effects body contours, persons under 1 metre or over 2 metres tall and where carrying or pushing large objects.

^Automatic High Beam, Active Cruise Control and Lane Departure Alert are driver assist features only and not a substitute for safe driving practices. Driver remains responsible at all times for safe driving.
*1The system may not operate properly depending on the weather, road and vehicle conditions or other factors. Be sure to read the Owner's Manual carefully.

Passenger safety cabin

For your safety, the CT 200h has a strong passenger cabin. The car's main pillars are specially reinforced and high tensile steel has been used strategically throughout. Crumple zones front and rear absorb energy in a crash, as does the steering column, which is engineered to collapse on impact.



Eight airbags

The CT 200h is equipped with eight SRS airbags and front seatbelt pretensioners and force limiters. In a collision, impact intensity sensors activate the dual-stage SRS driver airbag, dual-stage SRS front passenger airbag, and SRS side airbags (Front seats). Front seat occupants also benefit from SRS knee airbags, while SRS curtain shield airbags run the full length of the side windows.*²

Hill-start Assist Control*

Hill-start Assist Control maintains braking pressure to help prevent the CT 200h from moving backwards when starting on a slope. In addition to reducing driver fatigue, it also helps to minimise wheelspin on slippery inclines.



TRC (Traction Control System)

TRC enhances the ability to grip the road, especially when starting off or accelerating on uneven or slippery surfaces. Corrective measures are applied the moment the risk of wheelspin is detected, to help maintain traction.



VSC (Vehicle Stability Control)

An electronic system designed to help the driver maintain vehicle control under adverse conditions, VSC is not a substitute for safe driving practices. Factors including speed, road conditions and driver steering input can all affect whether VSC will be effective in preventing a loss of control.

^{**2}The SRS (Supplemental Restraint System) airbags are supplemental devices to be used with the seatbelts. The driver and all passengers in the vehicle must wear their seatbelts properly at all times. Never install a rear-facing CRS (Child Restraint System) on the front passenger's seat. For a forward-facing CRS, it is recommended you use it in the rear seats. Please do not use accessories for the seats which cover the parts where the SRS side airbags should inflate. Such accessories may prevent the SRS side airbags from activating correctly, causing serious injury (Lexus genuine seat covers are specifically designed for models equipped with the SRS side airbags. To find out about availability in your area, please enquire at your local dealer). The photo shows all the SRS airbags activated for display purposes only (the SRS side and curtain shield airbags only inflate on the side of the collision in an actual accident). For details on these and other important safety features, be sure to read the Owner's Manual carefully. Overseas model shown. Note: Please enquire at your local dealer for details on the availability of features.

*Hill-start Assist Control is a drive assist feature only and not a substitute for safe driving practices. Driver remains responsible at all times for safe driving.

F SPORT



F SPORT evolves the Lexus sport DNA that finds its ultimate expression in the LFA supercar, to enable more drivers to experience its exhilarating performance and unique personality. The F SPORT further refines the CT 200h's focus on driving pleasure, so drivers can enjoy a unique sense of oneness with the car, born of its ability to respond immediately to the driver's intentions in various situations.



»» EPISODE



The CT 200h's F SPORT package takes sporty performance to a higher level. Exclusive exterior design features highlight its dynamic and aggressive personality. The F SPORT also offers exclusive interior features that heighten expectation of outstanding performance.

In addition, it also incorporates a specially tuned suspension and enhancements to deliver sharp steering feel, flat cornering, and smooth ride comfort.



Overseas model shown.





LEXUS
TAKUMI

The Lexus pursuit of perfection finds its finest expression in the master craftsmanship of the Takumi.



Every Lexus is based on an uncompromising approach to creating premium automobiles. Inspired by our 'Yet' philosophy, we seek innovation in every facet of engineering through a sophisticated fusion of seemingly incompatible ideas such as 'high performance yet high fuel efficiency'. In addition, unique Lexus styling is born of our L-finesse design language, a fine balance of 'Leading-edge' and 'finesse', so that every Lexus is not only captivating and luxurious but also highly refined.

Finally, every individual Lexus model is also measured against a set of internal standards covering design, performance, specifications and equipment to confirm it is distinctive and worthy of the Lexus emblem.

This pursuit of perfection is evident at every stage of the manufacturing process.

Every Lexus vehicle is created with masterful skill and attention to detail inspired by both traditional artisanship and state-of-the-art engineering. For example, at the Tahara plant in Japan, precision components made using leading-edge digital technology are assembled and finished by master craftsmen called Takumi whose technical expertise and sure senses are honed by decades of rigorous experience.

EXTERIOR & INTERIOR
COLOURS*

The CT 200h is available in an array of exterior and interior colours, including conventional pairings of similar hues, as well as bold combinations, so you can enjoy creating your very own Lexus.



Sonic Quartz^ <085>¹



Mercury Grey^ <1H9>¹



Caliente^ <223>¹



Deep Metallic Bronze^ <223>¹



Titanium^ <1J7>¹



Onyx <212 >¹



Deep Blue^ <223>¹



Sparkling Meteor^ <223>¹



Graphite Black^ <223>¹



Vermillion^ <223>¹

*Lexus Australia reserves the right to vary and discontinue the current interior and exterior colours, trims and colour/trim/model combinations. Colours and trims displayed here are a guide only and may vary from actual colours due to printing/display process. See your Lexus dealer to confirm colour/trim/model availability when ordering your vehicle.
Metallic/mica pearlescent paint is optional and subject to additional charges on most models.

F SPORT ROOF
COLOURS*

The CT 200h is available in an array of exterior and interior colours, including conventional pairings of similar hues, as well as bold combinations, so you can enjoy creating your very own Lexus.



White Nova with black roof[^] <2LI>²



Mercury Grey with black roof[^] <2LL>²



Caliente with black roof[^] <2LN>²



Cobalt Mica with black roof[^] <2QF>²



Titanium with black roof[^] <2MN>²



Vermillion with black roof[^] <2LM>²



Sparkling Meteor with black roof[^] <2PX>²



INTERIOR TRIMS*

The journey begins with the finishing touches.



SPORTS LUXURY SMOOTH LEATHER-ACCENTED | Ochre



SPORTS LUXURY SMOOTH LEATHER-ACCENTED | Black



SPORTS LUXURY SMOOTH LEATHER-ACCENTED | Chateau Two-tone



ALCANTARA | Black



ALCANTARA | Chateau



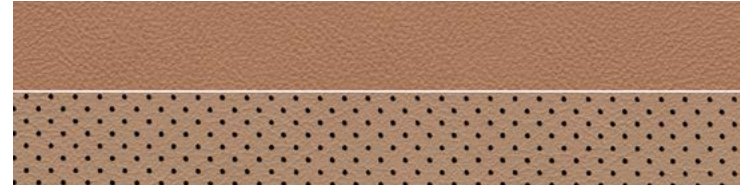
F SPORT SMOOTH LEATHER-ACCENTED | Black



F SPORT SMOOTH LEATHER-ACCENTED | Dark Rose



F SPORT SMOOTH LEATHER-ACCENTED | White



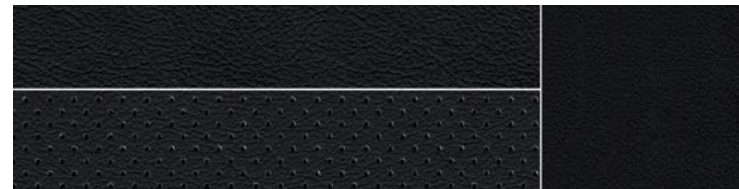
SPORTS LUXURY SMOOTH LEATHER-ACCENTED | Ochre



SPORTS LUXURY SMOOTH LEATHER-ACCENTED | Black



SPORTS LUXURY SMOOTH LEATHER-ACCENTED | Chateau Two-tone



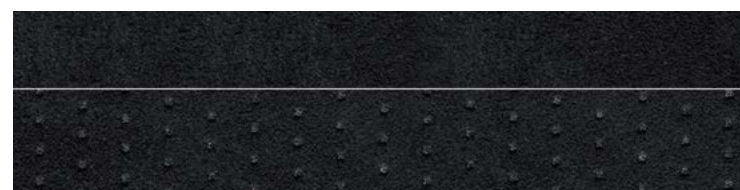
F SPORT SMOOTH LEATHER-ACCENTED | F Sport Black



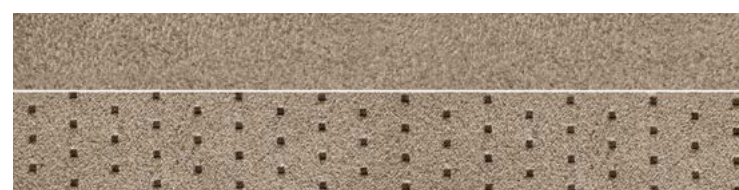
F SPORT SMOOTH LEATHER-ACCENTED | F Sport Red



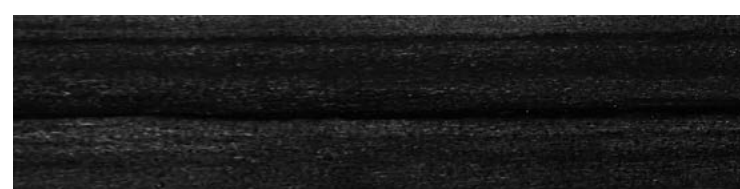
F SPORT SMOOTH LEATHER-ACCENTED | F Sport White



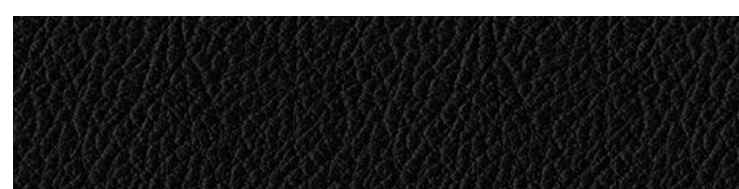
LUXURY FABRIC | Black



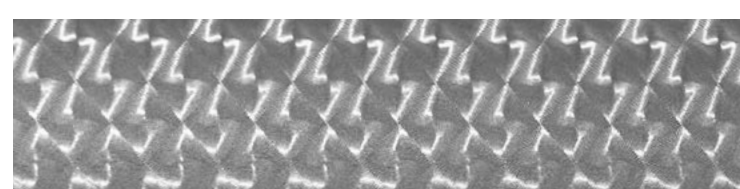
LUXURY FABRIC | Chateau



TRIM | Shimamoku (Sports Luxury)



TRIM | Black (Luxury)



TRIM | Wedge Metal (F Sport)

*Lexus Australia reserves the right to vary and discontinue the current interior and exterior colours, trims and colour/trim/model combinations. Colours and trims displayed here are a guide only and may vary from actual colours due to printing/display process. See your Lexus dealer to confirm colour/trim/model availability when ordering your vehicle. Metallic/mica pearlescent paint is optional and subject to additional charges on most models.



LEXUS OWNERSHIP SOLUTIONS

Lexus Ownership Solutions allows you to determine your finance costs and know the Guaranteed Future Value (GFV)⁺ of your vehicle from the outset. It offers you choice, control and certainty. In short, everything you'd expect from Lexus.

How does Lexus Ownership Solutions work?

- You choose the deposit that best fits your needs.
- You choose your term.⁺⁺
- You decide on the estimated kilometres you think the vehicle will have travelled at the end of the term (the End Odometer). The End Odometer will also include any kilometres already on the vehicle.
- Lexus Financial Services (LFS) then determines the GFV⁺ of your vehicle and calculates your monthly repayments with a final payment equal to the GFV. The GFV is the minimum value of your Lexus at the end of your finance contract. So, if you choose to return your Lexus at the end of the term, LFS will pay you the GFV which will be put towards the remaining balance owing on your account (subject to fair wear and tear conditions and agreed kilometres being met).

The end of the term? Simply replace, retain or return.

At the end of your term you can choose to:

- Replace or sell your Lexus using the trade-in value or sale price to pay the remaining balance of your account.
- Retain your Lexus and simply pay the remaining balance of your account (including final payment).
- Alternatively, return your Lexus and, subject to fair wear and tear conditions and the agreed kilometres being met, we'll put the GFV towards the final payment on your account.

Choosing your deposit - what is best for you?

With the flexibility of Lexus Ownership Solutions, you can choose the deposit that best fits your current needs.

- If, for example, you have funds tied up in other investments, you can choose to finance your new Lexus with a zero deposit.^{††}
- Alternatively, by using a larger deposit, you can lower your monthly repayments.
- Better still, compared to other finance options over a similar term with no GFV or equivalent balloon final payment, Lexus Ownership Solutions can provide lower monthly repayments.⁺⁺⁺

Want more certainty?

With Lexus Ownership Solutions, you've got the reassurance that at the end of the term (subject to fair wear and tear and agreed kilometres being met) you'll never owe more than your vehicle's worth to LFS. In other words, you don't have to worry about what your vehicle will be worth in the future because you know its minimum value from the outset.⁺

What happens in the case of the unexpected?

If your vehicle incurs damage and does not meet the Fair Wear and Tear guidelines, LFS will give you the opportunity to have your vehicle repaired. Otherwise, LFS can organise the repairs and deduct the cost from your GFV. This adjusted GFV will then be the price that LFS will offer you if you return the vehicle at the end of your term. Of course, if you retain the vehicle, the condition doesn't matter, however, if you replace it or sell it privately, the condition will obviously impact your sale price.

So what does your accountant think?

Naturally, we think Lexus Ownership Solutions is an excellent, innovative way to put you in control of buying a new Lexus. That said, we suggest you seek independent advice to ensure Lexus Ownership Solutions is right for you.

Wouldn't it be great if Lexus Ownership Solutions was just the beginning?

Lexus' innovations and commitment to customer service extend well beyond Lexus Ownership Solutions. Once you purchase a new Lexus, you'll become a member of the Lexus Encore Privileges Programme and enjoy a host of exclusive benefits.[†]

For further details, simply visit your nearest Lexus dealer or see lexus.com.au/services/benefits/

⁺ The Guaranteed Future Value (GFV) is the minimum value of your new or approved demonstrator Lexus at the end of your finance contract, as determined by Lexus Financial Services (LFS). If you decide to return your car to Lexus at the end of your term, LFS will pay you the agreed GFV which will be put against your final payment, subject to fair wear and tear conditions and agreed kilometres being met. The information provided is general in nature. You should seek your own financial advice to determine whether Lexus Ownership Solutions is appropriate for your individual circumstances. Please speak with your Lexus Dealer for more information. Terms, conditions, fees and charges apply. Lexus Ownership Solutions GFV products are available to approved customers of Lexus Financial Services, a division of Toyota Finance Australia Limited ABN 48 002 435 181, AFSL and Australian Credit Licence 392536.

⁺⁺ Up to four years.

⁺⁺⁺ Total interest charges will be higher if a GFV or balloon final payment is selected.

[†] Terms and Conditions apply.

^{††} Approved applicants only. Terms and conditions apply. A deposit may be required for capacity reasons.



THE BENEFITS OF ENCORE

The benefits of being a Lexus owner go far beyond the intrinsic pleasure of driving the vehicle. From the moment you're handed the keys, you'll also be welcomed to the Lexus Encore Privileges Programme† - offering a range of exclusive initiatives that reaffirm our ongoing pursuit of perfection.

It all means you'll enter a world of benefits that extends to every corner of life. A world where everything's just that much easier and works that much more seamlessly. And a world where, should trouble ever find you, you can always find a helping hand.

Take our After Sales Service as an example. Both our technology and technicians are at the forefront of automotive innovation. And our profound understanding of every single component of your Lexus means we can do more to ensure it's a pleasure to drive today, and in the long run. It's a world you've always belonged in. A privilege unique to Lexus drivers.

Silver service

Every aspect of your Lexus is built around your comfort and convenience, so it's fitting that when it's ready for a service, we'll come and pick it up from you and provide you with a complimentary loan car while we're inspecting. Plus, when we return your Lexus, it will have received a complimentary wash and interior vacuum.

Experience Lexus outside your vehicle

We're constantly striving to enhance the Lexus ownership experience. It's what we're known for. Our luxury events will be the perfect way to experience the Lexus lifestyle and network with other owners. Tickets may be limited, so be quick to secure your place.

Peace of mind

Wherever you are and whatever you're doing, you can relax, because with our Encore Privileges Programme, you have the 24-hour support of Lexus DriveCare.* We'll look after your car and, just as importantly, we'll look after you and your passengers.

See lexus.com.au/services/benefits for details.

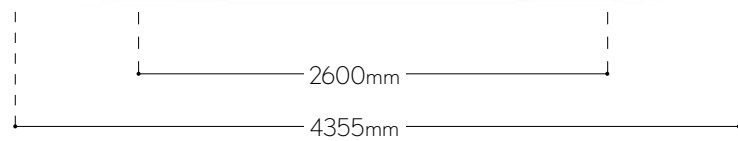
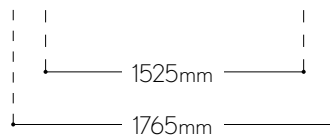
†Encore Privileges apply for the period of the standard four-year / 100,000km factory warranty (whichever occurs first) or such other standard factory warranty offered by Lexus from time to time on new Lexus vehicles. They do not apply to any certified or extended warranty products. Lexus Australia reserves the right to change, without notice, any benefits specified. Benefits should be confirmed at the time of ordering with your authorised Lexus dealer. Benefits are subject to Encore terms and conditions. For further information on these conditions, please contact your Lexus dealer. To the extent permitted by law, Lexus Australia will not be liable for any damage, loss or expense incurred in relation to the benefits specified above (whether by way of negligence or otherwise). Lexus Australia, a division of Toyota Motor Corporation Australia Limited ABN 64 009 686 097 155 Bertie St, Port Melbourne 3207.

*Full DriveCare details and conditions are available at lexus.com.au/services/benefits or you can phone 1800 253 987. Lexus Australia reserves the right to change, without notice, any benefits specified. Benefits should be confirmed at the time of ordering with your authorised Lexus dealer. To the extent permitted by law, Lexus Australia will not be liable for any damage, loss or expense incurred in relation to the benefits specified above (whether by way of negligence or otherwise). Lexus Australia, a division of Toyota Motor Corporation Australia Limited ABN 64 009 686 097, 155 Bertie St, Port Melbourne Vic 3207.

MAIN FEATURES		LUXURY	F SPORT	SPORTSLUXURY
EXTERIOR	Windshield glass; acoustic glass	•	•	•
	Front door, rear door and rear window glass; UV-cut function	•	•	•
	Moonroof	EP2	EP1/EP2	•
	Rain Sensing Wipers	•	•	•
	Halogen Headlights	•		
	Bi-LED Headlights with Washers and Automatic Levelling		•	•
	Shark Fin Antenna	•	•	•
	Heated and Retractable Exterior Mirrors with Puddle Lights	•		
	Retractable, Self-dimmings Exterior Mirrors		•	•
	16" Alloy Wheels	•		
	F Sport Unique 17" Dark Metallic Alloy Wheels		•	
	17" Alloy Wheels	EP1/EP2		•
	Rear and Rear-side Privacy Glass		•	•
	F Sport Unique Grille, Bumper Effects and Badging		•	
	F Sport Unique Black Roof (selected exterior colours)		•	
	F Sport Aerodynamic Rear Spoiler		•	
INTERIOR	LED high-mount stop lamp	•	•	•
	4.2" Colour Multi Information Display	•	•	•
	Vanity mirrors and lamps (Front seats)	•	•	•
	Cupholders (Front seats)	•	•	•
	Drive Mode Linked Mood Lighting	•	•	•
	Door pockets (Front doors); bottle holders	•	•	•
OPERATION	375 Litre Cargo Storage with Cargo Cover	•	•	•
	Dual-zone Climate Control Air Conditioning	•	•	•
	Manual Tilt and Telescopic Steering Column	•	•	•
	Steering wheel control switches	•	•	•
	Switchable Hybrid System Indicator / Tachometer	•	•	•
	Position memory switches (Driver's seat)		•	•
	Cruise Control	•	•	•
	Drive mode select - EV, ECO, NORMAL and SPORT	•	•	•
	Smart Entry & Start System	•	•	•
	Smart Card Key		EP2	•
SAFETY	Traction Control System (TCS)	•	•	•
	Vehicle Stability Control (VSC)	•	•	•
	Anti-lock Brake System (ABS) with Electronic Brake Force Distribution (EBD)	•	•	•
	Brake Assist System	•	•	•
	Hill-start Assist Control	•	•	•
	LED Front Fog Lights	EP1 / EP2	•	•
	Reversing Camera with Rear Guide Assist (RGA)	•	•	•
	Pre-Collision Safety System with Pre-Collision Braking including Pedestrian Detection ¹	•	•	•
	Lane Departure Warning with Steering Assist (LDW+)	•	•	•
	Radar Active Cruise Control (ACC)	•	•	•
	Eight SRS Airbags	•	•	•
	Automatic High Beam	•	•	•
	Rear Seatbelt Monitor	•	•	•
	Emergency Flashing Brake Lights	•	•	•
	Security Immobiliser	•	•	•
	Clearance and Reversing Sonar (6 head)		•	•
Anti-theft Siren with Intrusion Sensor		•	•	

MAIN FEATURES		LUXURY	F SPORT	SPORTSLUXURY
SEATS	Manual-adjustable front seats	•		
	Driver's Seat Adjustment	Manual 6-way	Power 10-way including Power Lumbar Support	Power 10-way including Power Lumbar Support
	Passenger Seat Adjustment	Manual 4-way	Power 4-way	Power 4-way
	Front Seat Heaters	EP1 / EP2	•	•
	60/40 Split Fold Rear Seats	•	•	•
	Fabric Interior Trim	•		
	Leather Accented Trim	EP1/EP2	•	•
NAVIGATION & AUDIO	Lexus Satellite Navigation System with SUNA™ Live Traffic Alerts ²	•	•	•
	10.3" Multimedia Screen with Lexus Remote Touch Controller	•	•	•
	Enform ³ App Suite	•	•	•
	10-speaker DVD Audio including Subwoofer and Amp	•	•	
	13-speaker Mark Levinson® Audio		EP2	•
	Bluetooth® Mobile Phone Connectivity ⁴	•	•	•
	USB (x2) and AUX Audio Inputs ⁵	•	•	•
	Multimedia Voice Control	•	•	•

SPECIFICATIONS		
DIMENSIONS & WEIGHT	Overall Length	4355mm
	Overall Width	1765mm
	Overall Height	1455mm
	Wheelbase	2600mm
	Tread	1525mm (Front)/1520mm (Rear)
	Kerb Weight	1410-1465kg
	Gross Vehicle Weight	1845kg
CHASSIS	Suspension	MacPherson strut type (Front)/Double wishbone type (Rear), coil springs, gas-filled shock absorbers, stabiliser bar
	Steering System	Electric
	Brakes	Hydraulic/Regenerative 255mm ventilated discs (Front)/279mm discs (Rear)
	Minimum Turning Radius (Tyres)	5.2m
	Fuel Tank Capacity	45 litres
ENGINE	Tyres	215/45R17 87W, 205/55R16 91V
	Type	1.8-litre, 4-cyl. in-line Twin Cam 16-valve (2ZR-FXE, petrol)
	Capacity (cc)	1798
	Maximum Power	98kW @ 5200rpm
	Maximum Torque	142Nm @ 2800-4400rpm
	Fuel Economy (Combined, L/100km) ⁶	4.1
Carbon Dioxide (Combined, g/km) ⁷	95	
MOTOR	Type	Synchronous alternating current motor <Permanent magnet type> (3JM)
	Max. Output	60kw
	Max. Torque	207Nm
	Total System Output	100kw
BATTERY	Type	Sealed Ni-MH (Nickel-Metal Hydride)
	Modules	28 (201.6V)
	Capacity	6.5Ah (3HR)



1. Pre-Collision Braking including Pedestrian Detection is a driver assist feature only and not a substitute for safe driving practices. Driver remains responsible at all times for safe driving. Pedestrians may not be detected in certain conditions including low and harsh light, where partially obstructed from view, where clothing or movement obscures or effects body contours, persons under 1 metre or over 2 metres tall and where carrying or pushing large objects.
2. Current navigation mapping database encompasses major capital and primary national road networks, as well as offering some coverage in regional areas. SUNA™ GPS Traffic Updates are only available in metropolitan Adelaide, Brisbane, Canberra, Gold Coast, Melbourne, Perth and Sydney; it operates from information provided by Intellematics Australia and may not cover all road incidents and congestion. See sunatrafic.com.au for details.
3. Enform is available on certain vehicle models and grades only. Enform services rely on data from the driver's compatible mobile phone and information provided by third parties. Availability is dependent on a number of factors, including the availability of third party information, mobile service, sufficient mobile data allowance and GPS satellite signal reception. Mobile usage is at the user's cost. Lexus Australia reserves the right to add, remove or modify applications. Compatibility with smartphones will vary according to model and operating system. Further information (including smartphone compatibility) is provided at www.lexus.com.au/enform.
4. The Bluetooth® word mark is owned by Bluetooth SIG, Inc. Not all devices are compatible and functionality varies depending on the device.
5. Not all devices will be compatible and functionality will vary depending on the device.
6. Achieved in test conditions. Actual fuel consumption may vary depending on driving conditions/style, vehicle condition and options/accessories fitted. Fuel consumption data provided for comparison purposes only.
7. Emissions vary depending on driving conditions/style, vehicle conditions and options/accessories.
 - Addition of extra features may change figures in this chart.
 - Lexus Australia reserves the right to alter any details of specifications and equipment without notice. Details of specifications and equipment are also subject to change to suit local conditions and requirements. Please enquire at your local dealer for details of any such changes that might be required for your area.

Note: Vehicles pictured and specifications detailed in this catalogue may vary from models and equipment available in your area.

- Lexus Australia has used its best endeavours to ensure material is accurate at the time of printing. All information must be confirmed with your Lexus dealer at the time of ordering, as specifications and details will change over time. Colours displayed are a guide only and may vary from actual colours. To the extent permitted by law, Lexus Australia will not be liable for any damage, loss or expense incurred as a result of reliance on the information and photos contained in this material. Proof: L2018_000627. Printed March 2018.