



ES

ES 300h

Overseas model shown.



ES	» P4
EPISODE 5	» P15
TAKUMI	» P47
COLOURS & TRIMS	» P48
LEXUS OWNERSHIP SOLUTIONS	» P58
BENEFITS OF ENCORE	» P60
SPECIFICATIONS	» P62











LEXUS

EPISODE
FIVE

1

CONCEPT



P16

2

DESIGN



P22

3

PERFORMANCE



P27

4

FEATURES



P35

5

SAFETY



P42

CONCEPT



The new ES was created to make it possible for you to enjoy the extraordinary in your every day. Built to move you – both from place to place, and by igniting a passion for the thrill of the drive – the ES adds pleasure, comfort and peace of mind to your daily routine. Experience the rejuvenated ES, a car that combines provocative performance with hybrid efficiency.¹



»» EPISODE



¹Overseas model shown. Australian specifications may vary.

¹Actual fuel consumption may vary depending on driving conditions / style, vehicle condition and options / accessories fitted.





Renowned for its noise control and ample legroom, the new ES is longer, lower and more spacious than its predecessors. Both front and rear seats are aligned to ensure optimal ride comfort for every occupant, encased within a sleek, coupe-like exterior that turns heads on the road. Built in response to the values at the heart of Lexus engineering, this is a sedan that anticipates, and goes beyond, your every need.



DESIGN



The new Lexus ES embodies provocative elegance. Its fluid silhouette has a distinctive downward slant with long, sloping lines that seamlessly blend into the signature Lexus spindle grille, a clean and chiselled rear and an interior that reflects the hallmarks of Lexus Takumi craftsmanship. Engineered to inspire passion and emotion, the ES challenges design expectations and redefines luxury as you know it.



»» EPISODE



EXTERIOR

Coupe-styling and a flowing roof line complement the car's beautiful proportions and accentuate its wide, low stance. Its sharp front face features elegant vertical bars that radiate from the centre, and the rich contrast of its side profile contributes to its powerful presence. Designed with improved aerodynamics and heightened performance in mind, the new ES makes for an exhilarating drive.



INTERIOR

Occupant comfort has long been an ES trademark, and the seventh generation model is no different. Its interior is refined, spacious and human-centred. Controls in the snug cockpit are thoughtfully laid out for easy reach, keeping your focus on the road ahead. Subtle touches like lower hip points and carefully configured headliners provide ample headroom and legroom with added front lumbar support for a comfortable ride - foregrounding the Lexus commitment to anticipate your every need.





PERFORMANCE



Simply depress the accelerator or turn a corner, and you'll realise the ES redefines the thrill of performance. A lighter chassis, responsive, intuitive handling and optimised control sharpen driving dynamics, designed to give you greater confidence behind the wheel and a sense of the passion invested into its engineering.

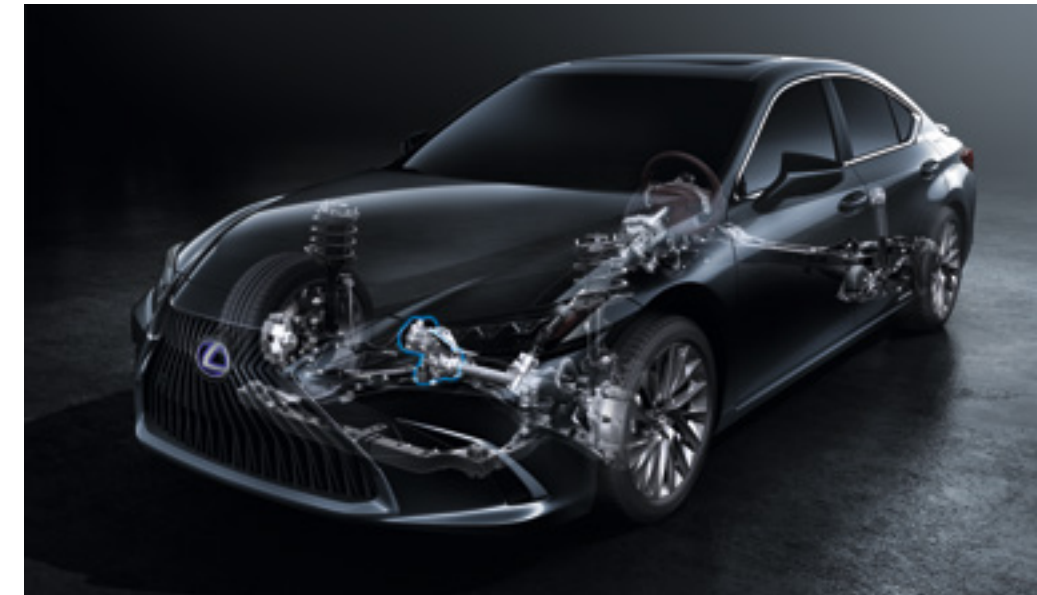


»» EPISODE



GA-K (Global Architecture-K) platform
 Lexus developed a new platform from scratch to improve the design, performance dynamics, ride quality, quietness and safety of the new seventh generation ES. The position of the steering wheel facilitates more comfortable driving by improving posture, and a low centre of gravity and uniform lateral weight distribution combine with a high-rigidity body and optimised chassis for top-of-the-line straight line driving and braking stability. The integration of a newly developed parallel rack EPS (Electric Power Steering) contributes to an enjoyable, responsive drive.

EPS (Electric Power Steering)
 The parallel rack Electric Power Steering system (EPS) provides a crisp, clean response as soon as you start turning the steering wheel. A newly developed steering column offers enhanced rigidity and excellent steering feel.



Performance rods¹
 Performance rods in the front and rear boost the feeling of cohesion between car and driver. The dampers quickly absorb body flex and minuscule vibrations while driving to sharpen handling characteristics and contribute to ride comfort and quietness.

Multi material body

The ES 300h's ring-shaped body structure helps to reduce body torsion. A V-shaped brace behind the rear seats contributes to coupling rigidity for excellent stability. Body rigidity is enhanced by the extensive use of advanced technologies, including laser screw-welding and structural body adhesives. Optimising the use of hot-stamp and high-tensile steel in key body components reduces weight while contributing to excellent collision safety.





Aerodynamics

Aerodynamic performance is seamlessly integrated into the ES 300h's elegantly shaped silhouette, with air flowing from the rear seats to the trailing edge of its trunk. Fins on the underbody cover and

rear combination lamps reduce air resistance, contributing to the quiet interior and excellent fuel efficiency. The controlled air flow also enhances driving stability.



Suspension

The geometry of the newly-developed MacPherson strut front suspension was optimised for an excellent turning stance, steering response and premium ride comfort. The arm positions on the rear suspension were optimised to smoothly handle uneven road surfaces, providing an excellent blend of handling stability and ride comfort. In addition, the shock absorbers on both the front and rear suspension incorporate swing-valve shock absorbers that respond to even minuscule movements. This creates an exceptionally flat feel when starting up, as well as excellent straight-line stability when driving.

Brakes

Engineered for excellent braking force, control and response, the brakes provide intuitive response to the driver's input, enhancing the pleasure of the drive by underscoring the thrill of the ES 300h's performance with added peace of mind. The car is also equipped with an electric parking brake that facilitates ease of operation.



Drive mode select

Drive mode select provides integrated control of multiple systems to let you tune performance to suit your driving style. You can select and change between three modes: Eco, Normal and Sport.



2.5 litre L4 engine A25A-FXS

The newly-developed 2.5 litre L4 engine delivers a sophisticated blend of dynamic performance, fuel efficiency and environmental friendliness. A review of the ES engine's basic design, the adoption of a longer stroke and high-efficiency intake ports as well as enhancing the flow of air in the cylinders have made for high-speed combustion. Additional refinements include multi-hole direct injectors, a continuously variable-capacity oil pump, a variable cooling system, and VVT-iE on the intake-side valves¹.



Hybrid System

The new hybrid transforms the common notion that hybrid efficiency compromises performance by producing exceptional fuel efficiency¹ alongside smooth, responsive and thrilling performance. In combining the excellent response of the 2.5 litre

L4 engine with a compact, small lightweight battery and sophisticated control capabilities, the Hybrid System delivers a smooth and natural acceleration feel, responding instantly to accelerator inputs.

¹Overseas model shown. Australian specifications may vary.

¹Actual fuel consumption may vary depending on driving conditions / style, vehicle condition and options / accessories fitted.



FEATURES



In re-imagining the Lexus ES, Takumi craftsmen and engineers enhanced the premium comfort previous generations of the ES were known for to produce a car with a standard of luxury and relaxation recognised as a step ahead of its competition.

» EPISODE



The sharp face of the ES 300h pulls the eye toward the Lexus spindle grille, a signature design cue heightened by the compact LED headlamps. The sloping lines of the DRL (Daytime Running Lamps) and rear combination lamps emit an L-shaped light that highlights the car's provocative silhouette and foregrounds the expressiveness of Lexus' distinct design aesthetic.

Advanced features including acoustic glass and seatback silencers contribute to the low noise levels in the cabin, providing occupants with a silent, luxurious experience. A reflection of Lexus' Omotenashi principles, or human-centred hospitality, the ES 300h is firmly ahead of its time in shaping perceptions of luxury.



3-eye Bi-Beam LED headlamps

The compact 3-eye Bi-Beam LED headlamps, available in the Sports Luxury grade, combine a beautiful, sharply defined design with excellent light distribution. The sequential turn signal lamps illuminate in a sequential flow from the inner side to the outside of the vehicle.

LED rear combination lamps

The L-shaped rear combination lamps reinforce the ES's Lexus identity. The three-dimensional design was engineered to combine high visibility with distinctive style.



Hands-free power boot¹

Even if both hands are full, when carrying the Electronic Key you can automatically open and close the boot by moving your foot beneath the rear bumper and out again.

Rear bumper

The characteristic lines of the ES 300h's sweeping side profile converge to give the rear bumper - a blend of high rigidity with excellent recyclability - a dynamic presence that accentuates a strong sense of stability.



Acoustic glass

The windshield and front door windows are fitted with a special acoustic glass with excellent sound insulating properties.



Overseas model shown. Australian specifications may vary.

¹ Available on Sports Luxury only.



Meter / Multimedia Display / Colour Head-Up Display

The 12.3-inch multimedia display indicates incoming hands-free mobile calls, audio system and other information. It coordinates the display of select information, with the multi-information display integrated into the 7-inch colour TFT (Thin Film Transistor) Optitron meter and large colour head-up display positioned in the driver's line of sight. The layout is also designed so that all controls are within easy reach, minimising the need for changes in posture. The EMV displays information such as maps in full-screen mode.

Active Noise Control

Active Noise Control uses engine rpm and a dedicated microphone to identify and reduce muffled engine sound by outputting an opposite-phase sound from the speakers to cancel it out, significantly enhancing quietness in the cabin.

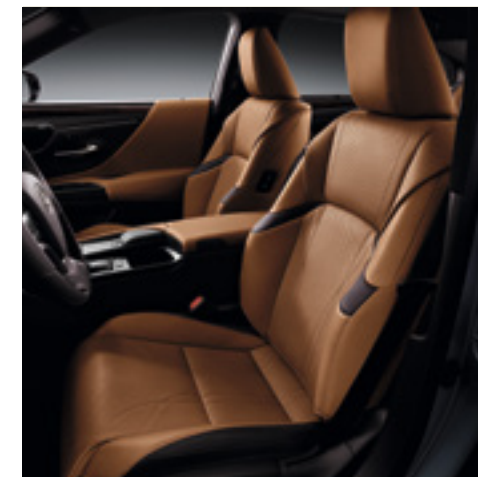


Remote Touch Interface

The interface is designed for smartphone-style operation. The cursor can be adjusted to stop following flick operation to suit the user's preferences. Pinch-in and pinch-out operation enables continuous in and out zooming.

Mark Levinson®¹ Premium Surround Sound System

17 Unity speakers with identical audio quality are arranged along the shoulder line which runs from the instrument panel to the door tops, effectively surrounding the cabin. By placing speakers close to occupants' ears to minimise obstructions, this layout is optimised for clear sound even in the rear seats. The rich, crisp and powerful low-frequency notes from the woofers combine with advanced sound technology to envelop you in the sensory experience of listening, no matter your choice of audio.



4-way driver and front passenger lumbar support²

The front seatbacks feature a design with separate upper and lower sections that provides an uninterrupted flow through to the console and armrest. Integrated lumbar support for the lower back helps reduce fatigue on long drives. Switches control 4-way horizontal and vertical adjustments, enabling the driver and front seat passenger to tailor an optimal seat position for their physiques.



Wireless charger³

To wirelessly charge batteries, simply place Qi-compatible smartphones and electronic devices on the charging tray in the centre console box.

Overseas model shown. Australian specifications may vary.

¹ Available on Sports Luxury only. Mark Levinson® is a registered trademark of Harman International Industries, Incorporated.

² Available on Sports Luxury only.

³ Only Qi-supported devices are compatible. Refer to your device manufacturer to determine your device's compatibility. Some devices may require the purchase of a Qi-supported accessory to enable wireless charging.



Lexus Climate Concierge

The powerful air conditioning system provides 3-zone independent control of the temperature in the driver's seat, front passenger's seat and rear seats. A control panel for rear seat passengers is conveniently located in the rear centre armrest.¹



LED ambient illumination¹

Subtle Lexus hospitality is seen in the elegant and functional design of the instrument panel and its real stitching detail. The use of LED ambient illumination to indirectly light the lower instrument panel and front and rear door trim creates a feeling at night of being gently enveloped. The brightness can be adjusted to suit your preference.

Rear armrest and multi-operation panel¹

The rear seats feature a centre armrest with convenient cupholders. An integrated control panel lets occupants adjust the audio system, seat recline and other settings, further enhancing passenger pleasure.



Boot-through

Boot-through functionality enables the carrying of longer items that won't fit in the boot.



Power rear seats¹

The reclining power rear seats provide up to 8° of recline to create an even more relaxing space.



Rear door / rear window sunshades¹

Sunshades for the rear door and rear quarter windows, and a power sunshade for the rear window, provide shade and privacy in the rear seats.



For a clear field of view when reversing, the rear window sunshade automatically lowers when reverse gear is engaged.

SAFETY



The ES's performance capabilities are underpinned by active and passive safety measures that utilise advanced technologies designed to support safe driving practices.

5

» EPISODE





LEXUS SAFETY SYSTEM +



Pre-Collision System¹

When the millimetre-wave radar and monocular camera sensors detect a vehicle ahead, a pedestrian during the day or night or a cyclist during the day and determine that a collision is likely, it alerts the driver and activates pre-collision brake assist when the driver depresses the brake pedal. If the driver cannot depress the brake pedal, it activates the pre-collision brakes to help avoid a collision or mitigate the impact force.



AHS (Adaptive High-Beam System)⁴

The system detects the headlamps of oncoming vehicles, tail lamps of preceding vehicles, and brightness of the surrounding area. When it detects a vehicle within the area illuminated by the high beams, it disables / enables 24 LEDs on each side to minutely adjust lit and unlit areas, optimising light distribution. By partially blocking light from the high-beam headlamps so they don't directly project onto a preceding or oncoming vehicle, the system helps contribute to safe driving at night².



LTA (Lane Trace Assist)

When driving on highways, freeways and on roads without white or yellow edge lines², LTA alerts the driver of possible lane or road deviations and provides steering support to help keep the vehicle centred in its lane. If it determines the vehicle may deviate from the lane on a sharp curve or in other circumstances, it displays a caution and encourages appropriate steering inputs. In addition, when Dynamic Radar Cruise Control (with full speed range) is activated, it helps assist steering to avoid lane departure. As well as providing assistance on gradual curves, it helps to keep the vehicle in the centre of the lane with smooth and steady movements. It also assists tracking of the preceding vehicle even if it is difficult to detect the white or yellow edge lines².



Radar Active Cruise Control

In addition to maintaining a constant speed, Radar Active Cruise Control uses the radar and camera sensors to detect a vehicle driving ahead and maintain an appropriate distance between vehicles².

RSA (Road Sign Assist)

RSA (Road Sign Assist), a Lexus first, utilises the front camera detecting regulatory speed signs, displaying them on the multi-information and head-up displays. The driver can switch between them via the steering wheel controls. The speed threshold function notifies the driver by inverting the colours on the displays. RSA works in conjunction with the Radar Active Cruise Control by allowing the driver to instantly switch cruise set speed up or down when entering a new speed zone².



RCTA (Rear Cross Traffic Alert)⁴

RCTA detects stationary objects such as walls in the direction of travel, as well as vehicles and pedestrians approaching from behind while reversing, and alerts the driver on the display and with a buzzer in the event a collision is determined to be likely².



BSM (Blind Spot Monitor System)⁴

When the quasi-millimetre-wave radars in the rear bumper detect vehicles in adjacent lanes that aren't visible in the door mirrors, the system activates an LED warning indicator in the relevant door mirror the moment a vehicle enters this blind spot².



10 SRS (Supplemental Restraint System) airbags

The ES features dual-stage SRS airbags (Front seats), SRS knee airbags (Front seats), SRS side airbags (Front and outboard rear seats) and SRS curtain shield airbags (Front and rear seats)³.



PVM (Panoramic View Monitor)⁴

To help check areas surrounding the vehicle that are difficult to see from the driver's seat, the system shows a bird's-eye view of the vehicle in real time on the 12.3-inch or 8-inch EMV displays, using a composite image taken by cameras mounted on the front, sides, and rear of the vehicle².

Overseas model shown. Australian specifications may vary.

¹ Pre-Collision System with Pedestrian Detection is a driver assist feature only and not a substitute for safe driving practices. Driver remains responsible at all times for safe driving. Pedestrians may not be detected in certain conditions including low and harsh light, where partially obstructed from view, where clothing or movement obscures or effects body contours, persons under 1 metre or over 2 metres tall and where carrying or pushing large objects.

² This is a driver assist feature only, designed to operate when certain technical conditions are met, and is not a substitute for safe driving practices. Driver remains responsible at all times for safe driving.

³ The SRS airbags are supplemental devices to be used with the seatbelts. The driver and all passengers in the vehicle must wear their seatbelts properly at all times. Never install a rear-facing CRS (Child Restraint System) on the front passenger's seat. For a forward-facing CRS, it is recommended you use it in the rear seats. Please do not use accessories for the seats which cover the parts where the SRS side airbags should inflate. Such accessories may prevent the SRS side airbags from activating correctly, causing serious injury (Lexus genuine seat covers are specifically designed for models equipped with the SRS side airbags. To find out about availability in your area, please inquire at your local dealer). The photo shows all the SRS airbags activated for display purposes only (the SRS side and curtain shield airbags only inflate on the side of the collision in an actual accident). For details on these and other important safety features, be sure to read the Owner's Manual carefully.

⁴ Available on Sports Luxury only.



LEXUS
TAKUMI

*The Lexus commitment to perfection
finds its finest expression in the master
craftsmanship of the Takumi.*



Every Lexus is based on an uncompromising approach to creating premium automobiles. Inspired by our 'Yet' philosophy, we seek innovation in every facet of engineering through a sophisticated fusion of seemingly incompatible ideas such as 'high performance yet high fuel efficiency'. In addition, unique Lexus styling is born of our L-finesse design language, a fine balance of 'leading-edge' and 'finesse', so that every Lexus is not only captivating and luxurious, but also highly refined.

Finally, every individual Lexus model is also measured against a set of internal standards covering design, performance, specifications and equipment, to confirm it is distinctive and worthy of the Lexus emblem.

This pursuit of perfection is evident at every stage of the manufacturing process.

Every Lexus vehicle is created with a masterful skill and attention to detail inspired by both traditional artisanship and state-of-the-art engineering. For example, at the Tahara plant in Japan, precision components made using leading-edge digital technology are assembled and finished by master craftsmen called Takumi, whose technical expertise and sure senses are honed by decades of rigorous experience.

EXTERIOR

Colours

The ES 300h is available in a selection of captivating exterior colours that change in different light conditions, such as the sunlight at different times of the day and streetlights at night, due to its unique and singular façade.



Sonic Quartz <085>*



Mercury Grey <1H9>*



Vermillion <3R1>*



Glacial Ecrú <4X8>*



Premium Silver <1J4>*



Titanium <1J7>*



Radiata Green <6X0>*



Deep Blue <8X5>*



Onyx <212>



Graphite Black <223>*

Overseas models shown. Australian specifications may vary.

*Paint featured is an option available at additional cost.

Lexus reserves the right to vary and discontinue the current interior and exterior colours, trims and colour / trim / model combinations. Colours and trims displayed here are a guide only and may vary from actual colours due to printing / display process. See your Lexus dealer to confirm colour / trim / model availability when ordering your vehicle. Metallic / Mica Pearlescent paint is optional and subject to additional charges on most models.

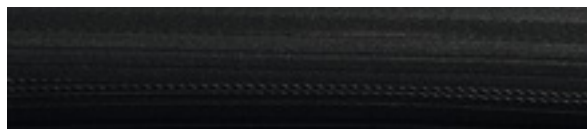
INTERIOR TRIMS

The journey begins with the finishing touches.

NULUXE (LUXURY)



Interior Trim: Chateau



Ornamentation Option: Piano Black¹

¹Overseas model shown. Australian specifications may vary.

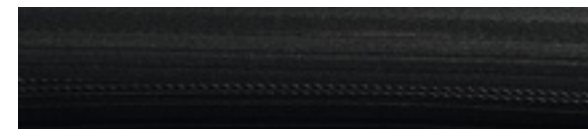
¹Luxury grade only.

Lexus reserves the right to vary and discontinue the current interior and exterior colours, trims and colour / trim / model combinations. Colours and trims displayed here are a guide only and may vary from actual colours due to printing / display process. See your Lexus dealer to confirm colour / trim / model availability when ordering your vehicle. Metallic / Mica Pearlescent paint is optional and subject to additional charges on most models.

NULUXE (LUXURY)



Interior Trim: Topaz Brown



Ornamentation Option: Piano Black¹

¹Overseas model shown. Australian specifications may vary.

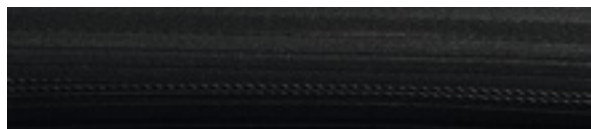
¹Luxury grade only.

Lexus reserves the right to vary and discontinue the current interior and exterior colours, trims and colour / trim / model combinations. Colours and trims displayed here are a guide only and may vary from actual colours due to printing / display process. See your Lexus dealer to confirm colour / trim / model availability when ordering your vehicle. Metallic / Mica Pearlescent paint is optional and subject to additional charges on most models.

NULUXE (LUXURY)



Interior Trim: Black



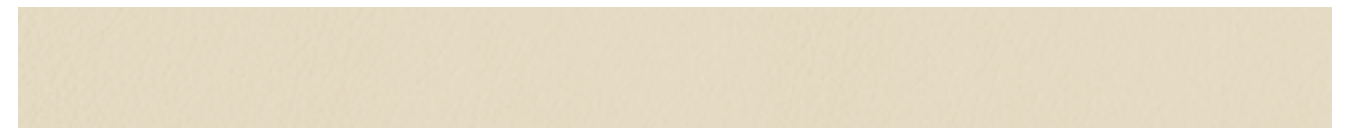
Ornamentation Option: Piano Black¹

Overseas model shown. Australian specifications may vary.

¹Luxury grade only.

Lexus reserves the right to vary and discontinue the current interior and exterior colours, trims and colour / trim / model combinations. Colours and trims displayed here are a guide only and may vary from actual colours due to printing / display process. See your Lexus dealer to confirm colour / trim / model availability when ordering your vehicle. Metallic / Mica Pearlescent paint is optional and subject to additional charges on most models.

SEMI-ANILINE LEATHER-ACCENTED (SPORTS LUXURY)



Interior Trim: Rich Cream



Ornamentation Option 1: Shimamoku Brown



Ornamentation Option 2: Bamboo

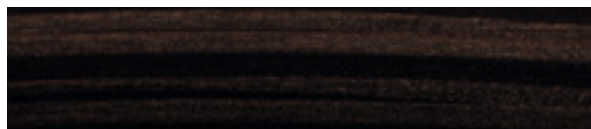
Overseas model shown. Australian specifications may vary.

Lexus reserves the right to vary and discontinue the current interior and exterior colours, trims and colour / trim / model combinations. Colours and trims displayed here are a guide only and may vary from actual colours due to printing / display process. See your Lexus dealer to confirm colour / trim / model availability when ordering your vehicle. Metallic / Mica Pearlescent paint is optional and subject to additional charges on most models.

SEMI-ANILINE LEATHER-ACCENTED (SPORTS LUXURY)



Interior Trim: Topaz Brown



Ornamentation Option 1: Shimamoku Brown

Overseas model shown. Australian specifications may vary.

Lexus reserves the right to vary and discontinue the current interior and exterior colours, trims and colour / trim / model combinations. Colours and trims displayed here are a guide only and may vary from actual colours due to printing / display process. See your Lexus dealer to confirm colour / trim / model availability when ordering your vehicle. Metallic / Mica Pearlescent paint is optional and subject to additional charges on most models.

SEMI-ANILINE LEATHER-ACCENTED (SPORTS LUXURY)



Interior Trim: Chateau



Ornamentation Option 1: Shimamoku Black

Overseas model shown. Australian specifications may vary.

Lexus reserves the right to vary and discontinue the current interior and exterior colours, trims and colour / trim / model combinations. Colours and trims displayed here are a guide only and may vary from actual colours due to printing / display process. See your Lexus dealer to confirm colour / trim / model availability when ordering your vehicle. Metallic / Mica Pearlescent paint is optional and subject to additional charges on most models.

SEMI-ANILINE LEATHER-ACCENTED (SPORTS LUXURY)



Interior Trim: Black



Ornamentation Option 1: Shimamoku Black



Ornamentation Option 2: Bamboo



Overseas model shown. Australian specifications may vary.

Lexus reserves the right to vary and discontinue the current interior and exterior colours, trims and colour / trim / model combinations. Colours and trims displayed here are a guide only and may vary from actual colours due to printing / display process. See your Lexus dealer to confirm colour / trim / model availability when ordering your vehicle. Metallic / Mica Pearlescent paint is optional and subject to additional charges on most models.



LEXUS OWNERSHIP SOLUTIONS

Lexus Ownership Solutions allows you to determine your finance costs and know the Guaranteed Future Value (GFV) of your vehicle from the outset. It offers you choice, control and certainty. In short, everything you'd expect from Lexus.*

How does Lexus Ownership Solutions work?

- You choose the deposit that best fits your needs.
- You choose your term.**
- You decide on the estimated kilometres you think the vehicle will have travelled at the end of the term (the End Odometer). The End Odometer will also include any kilometres already on the vehicle.
- Lexus Financial Services (LFS) then determines the GFV of your vehicle and calculates your monthly repayments with a final payment equal to the GFV. The GFV is the minimum value of your Lexus at the end of your finance contract. So, if you choose to return your Lexus at the end of the term, LFS will pay you the GFV which will be put towards the remaining balance owing on your account (subject to fair wear and tear conditions and agreed kilometres being met).

The end of the term? Simply replace, retain or return.

At the end of your term you can choose to:

- Replace or sell your Lexus using the trade-in value or sale price to pay the remaining balance of your account.
- Retain your Lexus and simply pay the remaining balance of your account (including final payment).
- Alternatively, return your Lexus and, subject to fair wear and tear conditions and the agreed kilometres being met, we'll put the GFV towards the final payment on your account.

Choosing your deposit - what is best for you?

With the flexibility of Lexus Ownership Solutions, you can choose the deposit that best fits your current needs.

- If, for example, you have funds tied up in other investments, you can choose to finance your new Lexus with a zero deposit.††
- Alternatively, by using a larger deposit, you can lower your monthly repayments.
- Better still, compared to other finance options over a similar term with no GFV or equivalent balloon final payment, Lexus Ownership Solutions can provide lower monthly repayments.†††

Want more certainty?

With Lexus Ownership Solutions, you've got the reassurance that at the end of the term (subject to fair wear and tear and agreed kilometres being met) you'll never owe more than your vehicle's worth to LFS. In other words, you don't have to worry about what your vehicle will be worth in the future because you know its minimum value from the outset.*

What happens in the case of the unexpected?

If your vehicle incurs damage and does not meet the Fair Wear and Tear guidelines, LFS will give you the opportunity to have your vehicle repaired. Otherwise, LFS can organise the repairs and deduct the cost from your GFV. This adjusted GFV will then be the price that LFS will offer you if you return the vehicle at the end of your term. Of course, if you retain the vehicle, the condition doesn't matter, however, if you replace it or sell it privately, the condition will obviously impact your sale price.

So what does your accountant think?

Naturally, we think Lexus Ownership Solutions is an excellent, innovative way to put you in control of buying a new Lexus. That said, we suggest you seek independent advice to ensure Lexus Ownership Solutions is right for you.

Wouldn't it be great if Lexus Ownership Solutions was just the beginning?

Lexus' innovations and commitment to customer service extend well beyond Lexus Ownership Solutions. Once you purchase a new Lexus, you'll become a member of the Lexus Encore Privileges Programme and enjoy a host of exclusive benefits.†

For further details, simply visit your nearest Lexus dealer or see lexus.com.au/services/benefits/

* The Guaranteed Future Value (GFV) is the minimum value of your new or approved demonstrator Lexus at the end of your finance contract, as determined by Lexus Financial Services (LFS). If you decide to return your car to Lexus at the end of your term, LFS will pay you the agreed GFV which will be put against your final payment, subject to fair wear and tear conditions and agreed kilometres being met. The information provided is general in nature. You should seek your own financial advice to determine whether Lexus Ownership Solutions is appropriate for your individual circumstances. Terms, conditions, fees and charges apply. Lexus Ownership Solutions GFV products are available to approved customers of Lexus Financial Services, a division of Toyota Finance Australia Limited ABN 48 002 435 181, AFSL and Australian Credit Licence 392536.

** Up to four years.

††† Total interest charges will be higher if a GFV or balloon final payment is selected.

† Terms and Conditions apply.

†† Approved applicants only. Terms and conditions apply. A deposit may be required for capacity reasons.



THE BENEFITS OF ENCORE

The benefits of being a Lexus owner go far beyond the intrinsic pleasure of driving the vehicle. From the moment you're handed the keys, you'll also be welcomed to the Lexus Encore Privileges Programme† - offering a range of exclusive initiatives that reaffirm our ongoing pursuit of perfection.

It all means you'll enter a world of benefits that extends to every corner of life. A world where everything's just that much easier and works that much more seamlessly. And a world where, should trouble ever find you, you can always find a helping hand.

Take our After Sales Service as an example. Both our technology and technicians are at the forefront of automotive innovation. And our profound understanding of every single component of your Lexus means we can do more to ensure it's a pleasure to drive today, and in the long run. It's a world you've always belonged in. A privilege unique to Lexus drivers.

Silver service

Every aspect of your Lexus is built around your comfort and convenience, so it's fitting that when it's ready for a service, we'll come and pick it up from you and provide you with a complimentary loan car while we're inspecting. Plus, when we return your Lexus, it will have received a complimentary wash and interior vacuum.

Experience Lexus outside your vehicle

We're constantly striving to enhance the Lexus ownership experience. It's what we're known for. Our luxury events will be the perfect way to experience the Lexus lifestyle and network with other owners. Tickets may be limited, so be quick to secure your place.

Peace of mind

Wherever you are and whatever you're doing, you can relax, because with our Encore Privileges Programme, you have the 24-hour support of Lexus DriveCare*. We'll look after your car and, just as importantly, we'll look after you and your passengers.

See lexus.com.au/services/benefits for details.

†Encore Privileges apply for the period of the standard four-year/100,000km factory warranty (whichever occurs first) or such other standard factory warranty offered by Lexus from time to time on new Lexus vehicles. They do not apply to any certified or extended warranty products. Lexus Australia reserves the right to change, without notice, any benefits specified. Benefits should be confirmed at the time of ordering with your authorised Lexus dealer. Benefits are subject to Encore terms and conditions. For further information on these conditions, please contact your Lexus dealer. To the extent permitted by law, Lexus Australia will not be liable for any damage, loss or expense incurred in relation to the benefits specified above (whether by way of negligence or otherwise). Lexus Australia, a division of Toyota Motor Corporation Australia Limited ABN 64 009 686 097 155 Bertie St, Port Melbourne 3207.

*Full DriveCare details and conditions are available at lexus.com.au/services/benefits or you can phone 1800 253 987. Lexus Australia reserves the right to change, without notice, any benefits specified. Benefits should be confirmed at the time of ordering with your authorised Lexus dealer. To the extent permitted by law, Lexus Australia will not be liable for any damage, loss or expense incurred in relation to the benefits specified above (whether by way of negligence or otherwise). Lexus Australia, a division of Toyota Motor Corporation Australia Limited ABN 64 009 686 097, 155 Bertie St, Port Melbourne Vic 3207.

MAIN FEATURES ES 300h

		LUXURY	SPORTS LUXURY
EXTERIOR	17" alloy wheels	•	
	18" alloy wheels		•
	Door handles; foot area illumination	•	•
	Heated door mirrors	•	•
	Moonroof	•	•
	Privacy glass	•	•
	Temporary spare wheel	•	•
INTERIOR	7-inch colour Thin Film Transistor (TFT) multi-information display	•	•
	Analogue clock with GPS correction function	•	•
	Centre console box	•	•
	Colour Head-Up Display	•	•
	Cupholders (front and outboard rear seats)	•	•
	Door pockets (front and rear doors)	•	•
	Dual-Zone Climate Control with humidity sensor	•	
	Leather steering wheel and gear knob	•	•
	LED ambient illumination		•
	Lexus Climate Concierge	•	•
	Power rear and manual rear door sunshade		•
	Tri-Zone Climate Control with humidity sensor		•
	Vanity mirrors and lamps (front seats)	•	•
OPERATION	Drive Mode Select - ECO / NORMAL / SPORT	•	•
	Electric park brake	•	•
	Heated steering wheel		•
	Panoramic View Monitor		•
	Parking and clearance sonar	•	•
	Parking Assist monitor	•	•
	Power boot lid with kick sensor		•
	Power tilt and telescopic steering column; auto-away / auto-return function	•	•
	Rain-sensing wipers	•	•
	Smart Entry and Start System	•	•
	Smart Key Card	•	•
	Steering wheel control switches	•	•
	Wireless phone charger ¹	•	•
NAVIGATION AND AUDIO	10-Speaker Lexus Premium Sound System; AM/FM radio, in-dash DVD player, MP3 and WMA (Windows Media Audio) play compatible, DSP (Digital Signal Processor), ASL (Automatic Sound Leveliser)	•	
	12.3" multimedia screen with Lexus Remote Touch Controller	•	•
	2 USB ports / mini-jack ²	•	•
	Bluetooth ^{®3} mobile phone connectivity, hands free calling, wireless connect	•	•
	DAB+	•	•
	Mark Levinson ^{®4} Premium Surround Sound System; AM/FM radio, in-dash DVD player, 17 speakers, MP3 and WMA play compatible, DSP, ASL, Clari-Fi		•
Satellite Navigation System ⁵ with SUNA Live Traffic Updates ⁶	•	•	

LUXURY SPORTS LUXURY

		LUXURY	SPORTS LUXURY
SEATS	10-way power front seats	•	
	14-way power front seats with memory		•
	3-Position Memory Switches (Front seats)		•
	Heated front seats	•	•
	Heated outer rear seats		•
	Nuluxe interior trim	•	
	Power outer rear seat recline and adjust		•
	Semi-aniline leather-accented seats		•
SAFETY	Lexus Safety System+, including Pre-Collision System ⁷ , LDA (Lane Trace Alert), AHB (Automatic High Beam) System, Dynamic Radar Cruise Control	•	
	Lexus Safety System+, including Pre-Collision System ⁷ , LTA (Lane Trace Alert), AHS (Adaptive High-beam System), Dynamic Radar Cruise Control		•
	10 SRS airbags	•	•
	3-eye Bi-Beam LED headlamps; auto-levelling system		•
	Bi-Beam LED headlamps; auto-levelling system	•	
	3-Point ELR Seatbelts (all seats)	•	•
	AL-TPWS (Auto Location-Tire Pressure Warning System)	•	•
	Radar Active Cruise Control	•	•
	Anchor bars for fixing ISOFIX-compliant child seat (outboard rear seats)	•	•
	Anti-lock Brake System (ABS) with Electronic Brake force Distribution (EBD)	•	•
	Automatic anti-glare mirrors (interior and door mirrors)	•	•
	Blind Spot Monitor System		•
	Brake Assist System	•	•
	CRS (Child Restraint System) top tether anchors (outboard rear seats)	•	•
	Drive-Start Control	•	•
	Headlamp cleaners	•	•
	Hill-Start Assist Control	•	•
	LED Cornering Lamps	•	•
	LED Daytime Running Lamp (DRL)	•	•
	LED sequential turn signal lamps		•
Parking Support Alert (PKSA)	•	•	
Pretensioners and force limiters (front seats)	•	•	
Road Sign Assist	•	•	
Security system; alarm, immobiliser system	•	•	
Traction Control System (TCS)	•	•	
Vehicle Stability Control (VSC)	•	•	

¹ Only Qi-supported devices are compatible. Refer to your device manufacturer to determine your device's compatibility. Some devices may require the purchase of a Qi-supported accessory to enable wireless charging.

² Not all devices will be compatible. Functionality varies depending on device.

³ The Bluetooth[®] word mark is owned by Bluetooth SIG, Inc. Not all devices will be compatible and functionality varies depending on the device.

⁴ Mark Levinson[®] is a registered trademark of Harman International Industries, Incorporated.

⁵ Current navigation mapping database encompasses major capital and primary national road networks and offers some coverage in regional areas. Suna[™] GPS Traffic Updates are only available in metropolitan Adelaide, Brisbane, Canberra, Gold Coast, Melbourne, Perth and Sydney; it operates from information provided by Intelematics Australia and may not cover all road incidents and congestion. See sunatrafic.com.au for details.

⁶ Suna[™] GPS Traffic Updates only available in metro Adelaide, Brisbane, Canberra, Gold Coast, Melbourne, Perth and Sydney, using information from third party providers. Not all road incidents and congestion may be covered. See sunatrafic.com.au for details.

⁷ Pre-Collision System with Pedestrian Detection is a driver assist feature only and not a substitute for safe driving practices. Driver remains responsible at all times for safe driving. Pedestrians may not be detected in certain conditions including low and harsh light, where partially obstructed from view, where clothing or movement obscures or effects body contours, persons under 1 metre or over 2 metres tall and where carrying or pushing large objects.

SPECIFICATIONS <ES 300H>

DIMENSIONS AND WEIGHT (APPROXIMATE)	Overall Length	4975mm
	Overall Width	1865mm
	Overall Height	1445mm
	Wheelbase	2870mm
	Tread	Front: 1600mm ¹ , 1590mm ² Rear: 1610mm ¹ , 1600mm ²
	Kerb Weight ⁶	1680-1740kg
	Gross Vehicle Mass (GVM) ³	2150kg
	Seating Capacity	5
	Boot Capacity (L)	473
CHASSIS	Suspension	MacPherson strut type (front) Trailing Wishbone (rear)
	Steering System	EPS (Electric Power Steering)
	Brakes	Front: 305 / 28mm ventilated discs Rear: 281/ 12mm solid discs
	Minimum Turning Radius (Tyres)	5.8m (Luxury), 5.9m (Sports Luxury)
	Fuel Tank Capacity	50 Litres
	Tyres	215/ 55R17 94V (Luxury), 235/ 45R18 94Y (Sports Luxury)
ENGINE	Type	Petrol
	Capacity (cc)	2487
	Maximum Power	131kW @ 5700rpm
	Maximum Torque	221Nm @ 3600-5200rpm
	Fuel Economy (Combined, L/100km) ⁴	4.6
	Carbon Dioxide (Combined, g/km) ⁵	104
DRIVETRAIN	Driven Wheels	FWD
	Transmission	Electronic continuously variable transmission
MOTOR	Type	Permanent magnet motor
	Max. Output (kW)	88
	Max. Torque (Nm)	202
	Total System Output (kW)	160
BATTERY	Type	Sealed Ni-MH (Nickel-Metal Hydride)
	Modules	34
	Capacity	6.5Ah



1600mm¹, 1590mm²
1865mm



2870mm
4975mm



1445mm
1610mm¹, 1600mm²

¹ Vehicles with 215 / 55R17 tires

² Vehicles with 235 / 45R18 tires

³ Gross Vehicle Mass (GVM) is the total permissible combined weight of the vehicle, including occupants, fuel and cargo. Vehicle weights / mass and dimensions are approximate and subject to individual vehicle variances. Vehicles should be individually weighed and measured before fitting any accessories, towing or designing any compatible trailer / caravan or otherwise using the vehicle in any way that depends on this value.

⁴ Achieved in test conditions. Actual fuel consumption may vary depending on driving conditions / style, vehicle condition and options / accessories fitted. Fuel consumption data provided for comparison purposes only.

⁵ Emissions vary depending on driving conditions / style, vehicle conditions and options / accessories.

⁶ Vehicle weights / mass / volumes and dimensions are approximate and subject to individual vehicle variances. Vehicles should be individually weighed and measured before fitting any accessories, towing or designing any compatible trailer / caravan or otherwise using the vehicle in any way that depends on this value.

All images depict overseas model. Australian specifications may vary.

Addition of extra features may change figures in this chart. Lexus Australia reserves the right to alter any details of specifications and equipment without notice. Details of specifications and equipment are also subject to change to suit local conditions and requirements. Please enquire at your local dealer for details of any such changes that might be required for your area. Please inquire at your local dealer for details on the availability of features. Vehicle body colour might differ slightly from the printed photos in this catalogue. Printed in September 2018. PROOF: L2018-009439

