

GS



GS 300 | GS 300h | GS 350
GS 450h | GS F



 LEXUS

CONTENTS

- 4 Brand Heritage
- 6 Introducing the Range
- 10 Style and Design
- 12 Technology
- 15 Safety
- 16 The Power of h
- 18 F Sport
- 20 GS 300
- 21 GS 300h
- 22 GS 450h
- 23 GS 350
- 24 GS F
- 26 Exterior Colours
- 28 Interior Trim
- 30 Specifications
- 40 Lexus Ownership Solutions
- 42 Encore Privileges



DESIGNED FOR THE EYE, ENGINEERED FOR THE HEART

Success and passion are like twins. It's rare you find one without the other. The Lexus GS is a classic case in point. Conceived by a team of designers and engineers driven by the desire to challenge conventional wisdom, who set out to deliver a new breed of luxury vehicle.

A vehicle based on a seamless blend of contemporary style, stirring performance and understated sophistication. As a test drive will reveal, we think they were successful.

[DISCOVER MORE ABOUT THE GS](#)





MADE FOR THE ROAD, TAILORED FOR YOU

The GS is a reflection of innovation, intelligence and individuality. Each model is superbly equipped, impeccably styled and an inspiration on the open road. Advanced technologies such as Lane Keep Assist⁽³⁾, which does exactly as it suggests, are standard on all variants.

The range begins with the GS 300. Its turbocharged engine generates 180kW of power and its interior boasts a range of luxurious appointments. As for the GS 350, you'll enjoy 232kW of power and the precise shifting of an eight-speed Sports Direct Shift (SPDS) sequential transmission.

For something truly amazing in motoring, look no further than Lexus' hybrid powered models. This technology harmoniously combines a

petrol engine with an electric motor, to deliver increased power and greater efficiencies. Both the GS 300h and 450h deliver an amazing experience, for your right foot and your left brain.

As their names suggest, the GS 300 and GS 300h Luxury models offer a superb range of features, including leather accented trim, heated and ventilated front seats and a Reversing Camera⁽¹⁾ with Rear Guide Assist⁽¹⁾. You can personalise your vehicle even further courtesy of an Enhancement Pack. Alternatively, you can opt for the F Sport with its customised exterior styling package, sports-tuned suspension, upgraded braking, F Sport seating and more. Should you be seeking pure indulgence, look no further than GS 350 and 450h Sports Luxury models.

[DISCOVER MORE ABOUT THE GS](#)



THERE IS FINESSE, AND THERE IS L-FINESSE

STYLE AND DESIGN

While the GS is designed to appeal to the senses, the exterior belongs to the eyes. The spindle grille makes an exceptionally bold statement. Its strong, geometric pattern reveals itself time and again throughout the body. A chrome garnish highlights the distinctive mesh grille, while sculpted air vents are visually appealing and equally practical as they draw in air to cool the brakes.

Follow the vehicle's flanks and its lines highlight the slingshot design of the rear window. Arriving at the rear, the design completes itself in such a way as to give the GS a wide, surefooted stance.

Models can be differentiated by their wheels. The GS 300 and 300h Luxury grades come standard with multi-spoke 17" wheels, or 18" wheels with Enhancement Packs. F Sport models feature exclusive 10-spoke 19" alloys, while Sports Luxury grades are set off by distinctive 19" alloys with hollow rim technology.

DISCOVER MORE ABOUT THE GS



MUCH MORE THAN A DRIVE

STYLE AND DESIGN

In a GS, a drive is something more than just a drive - it's an experience. One in which leather accented seats hug your body, providing both luxurious comfort and added support when cornering. The instrument panel is highlighted with leather accents, to please the eye and also direct it to the instrument cluster.

Finding your preferred driving position is simple, thanks to a memory recall that readjusts the driver's seat, steering column and exterior mirrors. Satellite Navigation⁽²⁾ is standard on all models, and all Luxury and Sports Luxury models also feature a 4.2" Multi Information Display (MID) that sits within the instrument cluster and distills key trip information into quick reminders.

[DISCOVER MORE ABOUT THE GS](#)



GS 450h Sports Luxury model shown with Optional Laser Cut ornamentation



GS Sports Luxury model shown



GS 300 Luxury model shown



GS 350 Sports Luxury model shown with optional Laser Cut ornamentation



Available on all models with Adaptive Variable Suspension / SPORT S+



GS 300 F Sport model shown



Overseas GS 450h Sports Luxury model shown



GS 450h Sports Luxury model shown

INTELLIGENTLY INTUITIVE

TECHNOLOGY

The fewer distractions you have, the safer and more enjoyable your drive. So the GS incorporates the Lexus Remote Touch (LRT) Contoller. Located on the centre console, it allows you to instinctively search simple menus that control much of the vehicle's systems such as the audio, climate control and Satellite Navigation.⁽²⁾

Since not all driving conditions are the same, you'll also find the GS features Drive Mode Select. ECO mode makes the most of a more relaxed gear change and throttle response to deliver greater efficiencies. The NORMAL mode is best for congested city driving and ensures smoother acceleration. When you're out of town you can enjoy more spirited driving, thanks to the SPORTS mode that holds the gears longer and makes the throttle more responsive.

Driving a GS is like driving with an extra pair of eyes. The All-speed Radar Active Cruise Control⁽³⁾ helps maintain a safe following

distance when driving on highways. The system also provides information to the Pre-Collision Safety System⁽⁹⁾ that detects potential collisions and activates a sophisticated series of actions to minimise consequences.

The GS Sports Luxury's tri-zone climate control is also a masterpiece in occupant comfort with the driver, front passenger and rear passengers all able to select individual temperatures. As for an example of attention to the smallest of details, an S-Flow system directs airflow only to those seats that are occupied.

The Mark Levinson[®] 17-speaker Sound System, produces such amazing quality & superior sound quality, that it gives new meaning to the expression "music to your ears". It is available on selected models and Enhancements Packs.

Sit yourself behind the wheel of a GS and you'll begin to appreciate that every drive becomes something more than just a ride. All GS models are, for example, equipped with Adaptive Variable Suspension (AVS)⁽¹⁰⁾. This system allows the suspension to instantly adapt to uneven road surfaces, heavy braking or tight cornering, so you enjoy a controlled, refined drive regardless of the conditions.

Speaking of handling, the GS 350 and 450h F Sport models are equipped with Variable Gear Ratio Steering (VGRS) that adjusts the responsiveness of the steering, in line with vehicle speed. These models also include a sophisticated Lexus Dynamic Handling (LDH) package incorporating Dynamic Rear Steering (DRS). As the wheels turn, the rear wheels also turn by a few degrees in order to enhance cornering.

[DISCOVER MORE ABOUT THE GS](#)





SAFETY ISN'T OPTIONAL

SAFETY

Even though the GS comes with 10 SRS airbags, Lexus understands there is much more to protecting you and your passengers. It's not a matter of counting features, but ensuring how they work, both independently and in harmony.

Take Lane Keep Assist⁽⁴⁾ for example. When All-speed Radar Active Cruise Control⁽³⁾ is activated, Lane Keep Assist uses cameras to monitor the lane markers, and should it sense the vehicle begin to drift out of its lane, the system sounds a warning, while the steering gently helps redirect the GS back to its own lane.

The key feature, however, of the GS safety system is to be found in the Vehicle Dynamics Integrated Management (VDIM). It monitors everything, from braking and traction control to Vehicle Stability Control (VSC) and power steering. This system constantly detects road conditions and the vehicle's performance, and may make minute adjustments in milliseconds as required.

Multi-lane driving is also made safer thanks to a Blind Spot Monitor (BSM)⁽⁹⁾. Quasi-millimetre wave radar detects approaching vehicles in the blind spots around the vehicle. Should it detect a vehicle, it alerts the driver through the BSM⁽⁹⁾ indicators on the exterior mirrors. As proof of Lexus' commitment to your safety, the system is standard on all GS models.

To convey driving information easily to the driver the information is projected on a colour Head Up Display (HUD) at the base of the windscreen. This system is standard on GS 350 and 450h F Sport and Sports Luxury models, as well as select Enhancement Packs. Pre-Collision Safety (PCS) system including Pedestrian Detection⁽³⁾ is fitted as standard across all grades, and uses Pedestrian Detection⁽³⁾ to detect other vehicles or obstructions in front of the vehicle. If the system detects that there is a high probability of a collision, it warns the driver. Additionally, if there is a high probability of a collision or the system detects that a collision is unavoidable, it may automatically activate the brakes, helping to mitigate impact force to occupants and the vehicle.

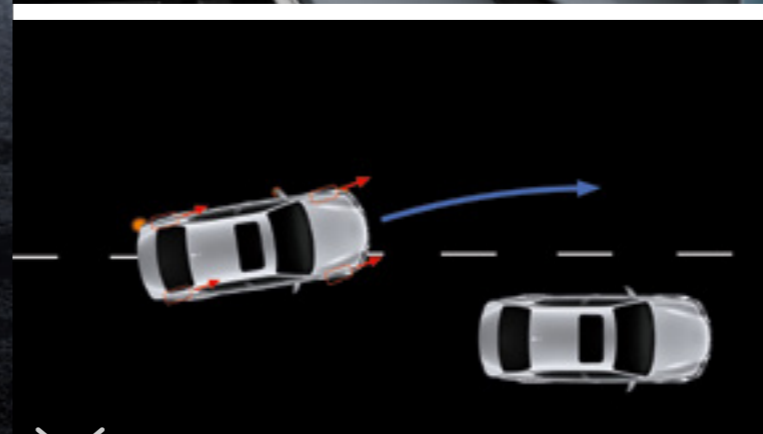
The system can be turned on or off and the warning timing adjusted using the PCS switch. When VSC is OFF, the pre-collision brake and pre-collision brake assist functions are deactivated.

DISCOVER MORE ABOUT THE GS

Prototype GS Sports Luxury model shown



GS 350 Sports Luxury model shown



Dynamic Rear Steering depicted

POWERED BY PETROL, ELECTRICITY AND GENIUS

THE POWER OF h

Today, many of us take the Hybrid for granted, but it remains an amazing concept - the seamless pairing of an electric motor and petrol engine. Like most great ideas, it's relatively simple, yet its results are amazing: increased performance and less energy.

A further advancement, a Continuously Variable Transmission (CVT), delivers a smooth level of power, regardless of your speed. If you've never experienced such a transmission, you'd be amazed at its smoothness compared to the notch-like movements of a traditional one. That said, should you enjoy changing gears you can rest easy knowing the GS 450h has simulated the changes of an 8-speed transmission.

[DISCOVER THE LEXUS HYBRID](#)



LOOKS AREN'T ALWAYS DECEIVING

F SPORT

Looks can be deceiving, but not in the case of the F Sport. Here is a vehicle that performs as well as it looks. As with all Lexus vehicles, the exterior focus is on the signature spindle grille. It's deeper and wider, thereby producing a dominant, aggressive look. Air vents sit either side to complement the grille and aid in cooling the front brakes. F Sport badges and 19" alloys add to the sporting credentials.

Both the 2.0 litre turbo and 3.5 litre V6 petrol variants and two hybrid variants are available in the F Sport grade.

GS 350 and 450h F Sport models feature the Lexus Dynamic Handling (LDH) package for reduced body roll and better grip

with Dynamic Rear Steering (DRS) to improve cornering by marginally turning the wheels. Inside you'll find aluminium accents, alloy sports pedals and an F Sport steering wheel which reflect the F Sport's sharp reflexes. The cockpit is capped off with black headlining and stunning leather accented seating.

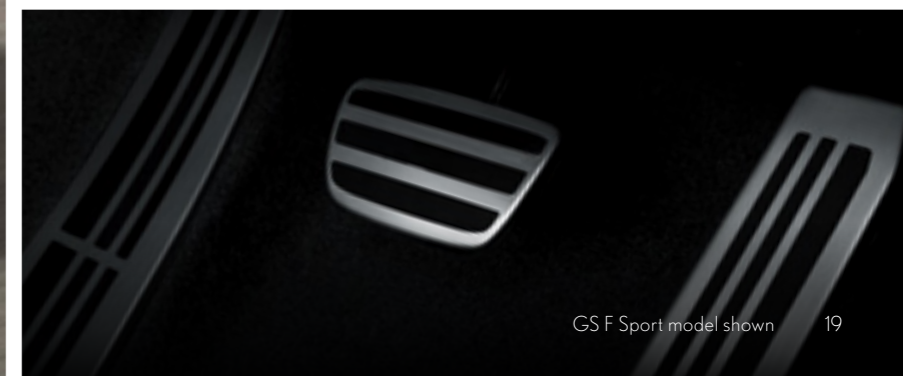
[DISCOVER MORE ABOUT THE GS](#)



Overseas GS 350 F Sport model shown



GS 350 F Sport model shown



GS F Sport model shown



JAPANESE DESIGN, TAKUMI PRECISION

GS 300

The GS 300 delivers powerful performance thanks to its turbocharged 2.0 litre intercooled petrol engine with Direct Injection, delivering 180kW of power. The 8-speed Sports Direct Shift (SPDS) transmission is silky smooth. The GS 300 is available in both Luxury and F Sport variants.

[DISCOVER MORE ABOUT THE GS](#)



GS 300 Luxury model shown with Enhancement Pack 1



FROM THE HOME OF LUXURY HYBRID TECHNOLOGY

GS 300h

As you'd expect of a Lexus hybrid, the GS 300h is highly advanced and highly impressive. Its 2.5 litre Atkinson cycle petrol engine works in harmony with an electric motor to deliver 164kW of power and exceptional responsiveness.

Below the rear bumper, you'll find a diffuser which performs a dual role of enhancing stability and keeping the exhaust outlets discreetly tucked away. Speaking of discreet, the luxurious interior is leather-accented, the environment is serene and a host of premium appointments await your discovery.

[DISCOVER MORE ABOUT THE GS](#)





GS 350 F Sport model shown

EXHILARATION COMES STANDARD

GS 350

The GS 350 is available in F Sport and Sports Luxury models. At its heart lies a high technology quad cam 3.5 litre engine that is simultaneously powerful and efficient, thanks to its Dual Variable Valve Timing with intelligence (Dual VVT-i). This system constantly retunes the engine, thereby providing optimum response and efficiency at all speeds.

An 8-speed Sports Direct Shift (SPDS) transmission complements the performance, by literally shifting in milliseconds. Better still, the selection of SPORT S or SPORT S+ modes will tailor gear shifts in line with G forces during high speed cornering.

[DISCOVER MORE ABOUT THE GS](#)

THE HEIGHT OF INTELLIGENCE, THE PEAK OF PERFORMANCE

GS 450h

For all its refinement, the GS 450h is remarkably responsive. Hit the accelerator a little too firmly and its 3.5 litre Atkinson cycle V6 will place you firmly back in your seat. Add the power from its electric motor and you'll find this vehicle delivers astonishing performance and amazing efficiencies.

A Continuously Variable Transmission (CVT) complements the sense of smoothness and ease with which the GS 450h goes about everything it does. Even the headlights in the GS 450h F Sport and Sports Luxury are

brilliant. The LED headlamps come to full illumination quicker, yet generally consume far less energy than conventional High Intensity Discharge Headlights (HID).

In keeping with luxury you'd expect of a top of the line Lexus, the GS 450h Sports Luxury features hand polished woodgrain-look accents within the rim of a steering wheel which is also heated to keep you comfortable even in the coldest weather.

[DISCOVER MORE ABOUT THE GS](#)



HIGH PERFORMANCE IN UNPRECEDENTED STYLE AND COMFORT

Launched into Australia in late 2015, the GS F is a select breed of sports car in the lineage of other high performance Lexus models including the IS F and RC F, and embodying the soul of the Lexus Supercar - the LFA.

Strap yourself in. Lexus F branded vehicles are not for the faint of heart. Not to be confused with Lexus F Sport grades, Lexus F vehicles are true sports cars in a different league.

To be emblazoned with the F moniker, a Lexus must first meet a specific set of standards above the already exacting standards of other Lexus models. Sound, responsiveness, the feeling of limitless power and ultimately driving exhilaration are what separates an F vehicle. Born on Fuji Speedway, this is the philosophy of F.

High powered performance combined with full-featured luxury make the GS F a practical performance sedan unlike any that has come before. The GS F's sporting pedigree is reinforced through its striking interior, without sacrificing any of the luxuries you would expect from Lexus. Its aerodynamic curves and dramatic spindle grille make the GS F impossible to resist. Technology is in the DNA of the GS F, including the intelligently designed safety systems that offer protection and prevention in a diverse range of circumstances. With a 5.0 litre V8 engine delivering an adrenaline-charged 351kW at 7,100rpm and 530Nm of torque at 4,800 to 5,600 rpm, the GS F offers a powerful and highly responsive drive.

The GS F has driving dynamics to be enjoyed by all driving enthusiasts. The Drive Mode Select system provides enhanced driving performance and enjoyment by allowing the driver to choose the most appropriate drive mode to match their preferred driving style and/or situation. Selections include NORMAL, (ADD CUSTOMISE), ECO, SPORT S and SPORT S+, while SPORT+ goes further to recalibrate the various electronic systems, enhancing handling and allowing you to go closer to the performance limit.

The GS F's 8-speed Sports Direct Shift (SPDS) transmission shows two faces. One is a silky smooth automatic and the other a sportier ride courtesy of its 8-speed manual mode.

Exclusive to Lexus F models is 8" digital instrumentation with unique features to support both street and track driving. The meter design changes to correspond to the selected Drive Mode, enhancing visibility and recognition of key information like speed, rpm, shift indicator and current gear position.

The GS F features an exclusive front design including Lexus' signature spindle grille with a bold 'L' mesh pattern. It is the source from which the vehicle's lines originate as they define the GS F's surefooted masculine stance.

Forged 19" Smoke Finish Alloy Wheels further enhance the vehicle's sporting appearance, with optional Polished Alloy Wheels also available.

[DISCOVER MORE ABOUT THE GSF](#)



FINISHING TOUCHES

EXTERIOR COLOURS

With Lexus, paint is much more than paint. Layer upon layer is applied, including particles of mica, glass and, in some cases, metallic substances to ensure your vehicle shimmers, as light plays off it and the vehicle's subtle curves are highlighted. Sonic Silver, for example, is a six-step process which includes an aluminium pigment that interacts with solid colours, to deliver a finish that appears remarkably deep and highly lustrous. The Lexus paint process also delivers an innovative final clear coat that has the ability to gradually repair minor scuffs and scratches in high wear areas, such as door handles.

GS



Sonic Quartz[^] 085



White Nova[^] (F Sport models only) 083



Sonic Silver[^] 1J2



Onyx 212



Titanium[^] 1J7



Graphite Black[^] 223



Slate Grey[^] 1G0



Vermillion[^] 3R1



Deep Metallic Bronze[^] 4X2



Cobalt Mica[^] (F Sport models only) 8X1



Deep Blue[^] 8X5

GS F



White Nova[^] 083



Cobalt Mica[^] 8X1



Slate Grey[^] 1G0



Sonic Silver[^] 1J2



Titanium[^] 1J7



Graphite Black[^] 223



Vermillion[^] 3R1

Lexus Australia reserves the right to vary and discontinue the current interior and exterior colours, trims and colour/trim/model combinations. Colours and trims displayed here are a guide only and may vary from actual colours due to printing/display process. See your Lexus dealer to confirm colour/trim/model availability when ordering your vehicle. Metallic/mica pearlescent paint is optional and subject to additional charges on most models.

[^]GS premium paint featured is an optional extra. GS F premium paint featured is included.

INTERNAL AFFAIRS

INTERIOR TRIM

A selection of quality leathers beautifully accents the GS line's interiors. There are three treatments to choose from, each attractively offset by contrasting colour stitching.

F Sport models feature a diamond perforation in the seats that reflects the vehicle's sporting personality. The Sports Luxury has what is known as a semi-aniline treatment, giving the seats and accents a sophisticated style and softer feel. Metallic surrounds highlight key features and

a woodgrain-look finish adds a sense of opulence to the Sports Luxury interior, while the F Sport features Naguri-style aluminium surrounds.

On the F Sport, a premium steering wheel and shift lever provide extra grip. The Sports Luxury's wheel features a woodgrain look and the GS 450h Sports Luxury offers optional bamboo that has been hand polished for a stunning effect.

Lexus Australia reserves the right to vary and discontinue the current interior and exterior colours, trims and colour/trim/model combinations. Colours and trims displayed here are a guide only and may vary from actual colours due to printing/display process. See your Lexus dealer to confirm colour/trim/model availability when ordering your vehicle.

GS



Chateau trim
Overseas GS 450h Sports Luxury model with Espresso ornamentation shown



Rich Cream trim
Overseas GS 450h Sports Luxury model with optional Laser Cut ornamentation shown



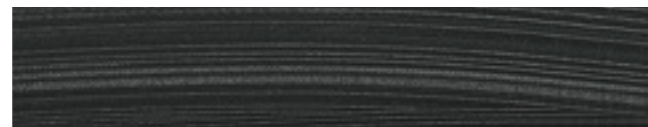
Topaz Brown trim
Overseas GS 450h Sports Luxury model with Espresso ornamentation shown



Black trim
Overseas GS 450h Sports Luxury model with Espresso ornamentation shown



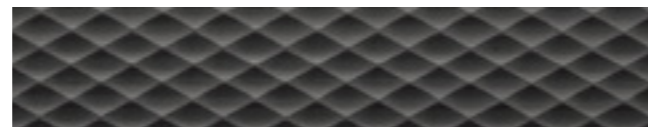
Dark Rose trim
Overseas GS 350 F Sport model and Enhancement Pack 1 shown



Black Etch ornamentation (Luxury models only)



Espresso ornamentation (Sports Luxury models only)



Naguri-style Aluminium ornamentation (F Sport models only)



Matte Bamboo ornamentation (optional on GS 450h Sports Luxury models only)



Laser Cut ornamentation (optional on Sports Luxury models only)

GS F



Optional Flare Red trim
Overseas GS F model with Naguri-style Aluminium ornamentation shown



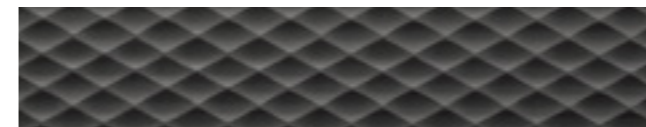
Optional Rouge Interior trim
Overseas GS F model and Naguri-style Aluminium ornamentation shown



Optional Black trim
Overseas GS F model with optional Carbon Fibre ornamentation shown



Black Alcantara trim
Overseas GS F model with optional Carbon Fibre ornamentation shown



Naguri-style Aluminium ornamentation



Carbon Fibre ornamentation



GS 300 SPECIFICATIONS

		Luxury	F Sport
EXTERIOR ⁽⁵⁾	Length (mm)	4880	4880
	Width (mm) - mirrors folded in	1840	1840
	Height (mm) - without moonroof	1455	1455
	Wheelbase (mm)	2850	2850
	Front Track (mm)	1575	1575
	Rear Track (mm)	1590	1560
	Turning Circle (Kerb to Kerb m)	10.6	10.6
	Coefficient of Drag (Cd)	0.27	0.27
INTERIOR ⁽⁵⁾	Length (mm)	2050	2050
	Width (mm)	1570	1570
	Height (mm)	1180 (1140 w/ EP1)	1180 (1140 w/ EP2)
WEIGHTS AND CAPACITIES (Approximate)	Kerb Weight (kg) ⁽⁵⁾	1665-1745	1665-1745
	Gross Vehicle Mass (kg) ⁽⁵⁾	2170	2170
	Seating Capacity	5	5
	Luggage Capacity (L)	520	520
	Fuel Tank Capacity (L)	66	66
	Towing Capacity (Braked/Unbraked) (kg) ⁽⁶⁾	1600/750	1600/750
BODY	Body Construction	Monocoque	Monocoque
	Body Type	5-door Sedan	5-door Sedan
PETROL ENGINE	Engine Type	Petrol	Petrol
	Engine Capacity (cc)	1998	1998
	Engine Designation	8AR-FTS	8AR-FTS
	Engine Description	4 Cylinder In-line 16-valve DOHC with Dual VVT-i	4 Cylinder In-line 16-valve DOHC with Dual VVT-i
	Fuel Injection	EFI, D-4S	EFI, D-4S
POWER ENGINE	Maximum Power (Petrol) (kW@rpm)	180kW@5800rpm	180kW@5800rpm
	Maximum Torque (Petrol) (Nm@rpm)	350Nm@1650-4400rpm	350Nm@1650-4400rpm
	Fuel Economy (Combined) (L/100km) ⁽⁷⁾	8.0	8.0
	Carbon Dioxide (Combined) (g/km) ⁽⁸⁾	186	186
HIGH VOLTAGE BATTERY	Type	N/A	N/A
	Nominal Voltage	N/A	N/A
DRIVELINE	Layout	Rear	Rear
	Transmission Description	Automatic	Automatic
STEERING	Type	Rack and Pinion	Rack and Pinion
	Power Assistance	Power-Assisted Electric Motor	Power-Assisted Electric Motor
BRAKES	Front	Ventilated Discs	Ventilated Discs
	Rear	Ventilated Discs	Ventilated Discs
SUSPENSION	Front	Independent, Double Wishbone Type, Upper A-arm, Lower L-arm, Coil Springs	Sports Tuned Independent, Double Wishbone Type, Upper A-arm, Lower L-arm, Coil Springs
	Rear	Independent Multi-link Type, Coil Springs	Sports Tuned Independent Multi-link Type, Coil Springs
TYRES AND RIMS	Front Tyre Size	225/50R17 (235/45R18 EP1)	235/40R19
	Rear Tyre Size	225/50R17 (235/45R18 EP1)	265/35R19
	Front/Rear Rim Size	17x7.5 (18x8 EP1)	19x8/19x9
	Rim Type	Alloy (4) Spare Wheel - Steel Space Saver	Alloy (4) Spare Wheel - Steel Space Saver

		Luxury	F Sport
ADVANCED FEATURES	Vehicle Dynamics Integrated Management System (VDIM) (incorporates Anti-lock Braking System (ABS) with Brake Assist (BA), Electronic Brakeforce Distribution (EBD), Traction Control (TRC) & Vehicle Stability Control (VSC))	•	•
	Pre-Collision Safety System (PCS) with Pedestrian Detection including Pre-Collision Braking (PCB) ⁽⁹⁾	•	•
	Adaptive Variable Suspension (AVS)	–	•
	Blind Spot Monitor (BSM) with Rear Cross Traffic Alert (RCTA) ⁽¹⁰⁾	•	•
	Reversing Camera with Rear Guide Assist (RGA)	•	•
	10 Supplemental Restraint System (SRS) Airbags	•	•
	All-speed Radar Active Cruise Control (ACC)	•	•
	Tyre Pressure Warning System	•	•
	Hill-start Assist Control (HAC)	•	•
	Electric Park Brake (EPB)	•	•
	Lexus Remote Touch Controller (LRT)	•	•
	Colour Head Up Display (HUD)	–	EP1, EP2
	Clearance & Reversing Sonars (8 head)	•	•
	Adjustable Front Seats with Driver's Seat Memory	10-way Driver/10-way Passenger	16-way Driver/10-way Passenger
	Heated & Ventilated Front Seats	•	•
	Smart Entry (4-door)/Smart Entry Key Card/Push Button Start	•	•
	Satellite Navigation System ⁽¹²⁾ with SUNA Live Traffic Alerts ⁽¹⁰⁾	•	•
	Drive Mode Select - ECO, NORMAL & SPORT	•	•
	SPORT S/S+ Drive Mode	–	•
	Bluetooth® Mobile Phone Connectivity ⁽⁹⁾	•	•
	Daytime Running Lights (DRLs)	•	•
	LED Front Fog Lights	•	•
	Automatic High Beam (AHB)	•	–
Adaptive High Beam System (AHS)	–	•	
Digital Radio with Time Shift	•	•	
12-speaker DVD Audio including Subwoofer, USB & AUX Inputs ⁽¹³⁾	•	•	
17-speaker Mark Levinson® DVD Audio with Clari-Fi ⁽¹²⁾	–	EP1, EP2	
Dual-zone Climate Control Air Conditioning with NanoE™ ⁽¹¹⁾	•	•	
Electronic Folding Side Mirrors with Heater & Self Dimming	•	•	
Rain Sensing Wipers	•	•	
4.2" Colour Multi Information Display (MID)	•	–	
F Sport Unique LFA-style 8" Digital Instrumentation	–	•	
8" Multimedia Screen	•	•	
12.3" Multimedia Screen	–	EP1, EP2	
Emergency Brake Signal	•	•	
Electric Rear Sunshade	–	•	
Moonroof	EP1	EP2	
Anti-theft Siren & Intrusion Sensor	•	•	
F Sport Unique features include Sports Pedals, High Friction Front Brake Pads, F Sport Unique Front & Rear Bumpers, Mesh Grilles, Rear Lip Spoiler, Sports Suspension Settings			
GS 300 LUXURY ENHANCEMENT PACK	Enhancement Pack 1 (Additional Cost)	Moonroof, 18" Luxury Alloy Wheels	
	Enhancement Pack 2 (Additional Cost)	Colour Head Up Display (HUD), 17-speaker Mark Levinson Audio & 12.3" Multimedia Screen	
GS 300 F SPORT ENHANCEMENT PACK	Enhancement Pack 1 (Additional Cost)	Colour Head Up Display (HUD), 17-speaker Mark Levinson Audio & 12.3" Multimedia Screen	
	Enhancement Pack 2 (Additional Cost)	Moonroof, Colour Head Up Display (HUD), 17-speaker Mark Levinson Audio & 12.3" Multimedia Screen	



GS 300h SPECIFICATIONS

	Luxury	F Sport	
EXTERIOR ⁽⁵⁾	Length (mm)	4880	4880
	Width (mm) Mirrors Folded In	1840	1840
	Height (mm) Without Moonroof	1455	1455
	Wheelbase (mm)	2850	2850
	Front Track (mm)	1575	1575
	Rear Track (mm)	1590	1560
	Turning Circle (Kerb to Kerb m)	10.6	10.6
	Coefficient of Drag (Cd)	0.27	0.27
INTERIOR ⁽⁵⁾	Length (mm)	2050	2050
	Width (mm)	1570	1570
	Height (mm)	1180 (1140 EP1)	1180 (1140 EP2)
WEIGHTS AND CAPACITIES (Approximate)	Kerb Weight (kg) ⁽⁵⁾	1735-1820	1735-1820
	Gross Vehicle Mass (kg) ⁽⁵⁾	2250	2250
	Seating Capacity	5	5
	Luggage Capacity (L)	451	451
	Fuel Tank Capacity (L)	66	66
	Towing Capacity (Braked/Unbraked) (kg) ⁽⁶⁾	0/0	0/0
BODY	Body Construction	Monocoque	Monocoque
	Body Type	5-door Sedan	5-door Sedan
PETROL ENGINE	Engine Type	Petrol Electric Hybrid	Petrol Electric Hybrid
	Engine Capacity (cc)	2494	2494
	Engine Designation	2AR-FSE	2AR-FSE
	Engine Description	Atkinson Cycle In-line 4 Cylinder	Atkinson Cycle In-line 4 Cylinder
	Fuel Injection	EFI, D-4S	EFI, D-4S
ELECTRIC MOTOR	Maximum System Voltage	650	650
POWER ENGINE	Maximum Power (Combined) (kW)	164	164
	Maximum Power (Petrol) (kW@rpm)	133kW@6000rpm	133kW@6000rpm
	Maximum Torque (Petrol) (Nm@rpm)	221Nm@4200-5400rpm	221Nm@4200-5400rpm
	Fuel Economy (Combined) (L/100km) ⁽⁷⁾	5.2	5.2
	Carbon Dioxide (Combined) (g/km) ⁽⁸⁾	121	121
HIGH VOLTAGE BATTERY	Nominal Voltage (V)	230	230
DRIVELINE	Layout	Rear	Rear
	Transmission Description	Continuously Variable Transmission with Paddleshift	Continuously Variable Transmission with Paddleshift
STEERING	Type	Rack and Pinion	Rack and Pinion
	Power Assistance	Power Assisted Electric Motor	Power Assisted Electric Motor
BRAKES	Front	Ventilated Disc	Ventilated Disc
	Rear	Ventilated Disc	Ventilated Disc
SUSPENSION	Front	Independent, Double Wishbone Type, Upper A-arm, Lower L-arm, Coil Springs	Independent, Double Wishbone Type, Upper A-arm, Lower L-arm, Coil Springs
	Rear	Independent Multi-link Type, Coil Springs	Sports Tuned Independent Multi-link Type, Coil Springs
TYRES AND RIMS	Front Tyre Size	225/50R17 (235/45R18 EP1)	235/40R19
	Rear Tyre Size	225/50R17 (235/45R18 EP1)	265/35R19
	Front/Rear Rim Size	17x7.5 (18x8 EP1)	19x8/19x9
	Rim Type	Alloy x4 Spare Wheel - Steel Space Saver	Alloy x4 Spare Wheel - Steel Space Saver

	Luxury	F Sport	
ADVANCED FEATURES	Vehicle Dynamics Integrated Management System (VDIM) (incorporates Anti-lock Braking System (ABS) with Brake Assist (BA), Electronic Brakeforce Distribution (EBD), Traction Control (TRC) & Vehicle Stability Control (VSC))	•	•
	Pre-Collision Safety System (PCS) with Pedestrian Detection including Pre-Collision Braking (PCB) ⁽⁹⁾	•	•
	Adaptive Variable Suspension (AVS)	–	•
	Blind Spot Monitor (BSM) with Rear Cross Traffic Alert (RCTA)	•	•
	Reversing Camera with Rear Guide Assist (RGA)	•	•
	10 Supplemental Restraint System (SRS) Airbags	•	•
	All-speed Radar Active Cruise Control (ACC)	•	•
	Lane Keeping Assist (LKA)	•	•
	Tyre Pressure Warning System	•	•
	Brake Hold	•	•
	Electric Park Brake (EPB)	•	•
	Lexus Remote Touch Controller (LRT)	•	•
	Colour Head Up Display (HUD)	–	EP1, EP2
	Clearance & Reversing Sonars (8 head)	•	•
	Adjustable Front Seats with Driver's Seat Memory	10-way Driver/10-way Passenger	16-way Driver/10-way Passenger
	Heated & Ventilated Front Seats	•	•
	Smart Entry (4-door)/Smart Entry Key Card/Push Button Start	•	•
	Satellite Navigation System ⁽²⁾ with SUNA Live Traffic Alerts ⁽¹⁰⁾	•	•
	Drive Mode Select with EV Drive Mode & SPORT S/S+ Drive Mode	–	•
	Drive Mode Select with EV Drive Mode	•	–
	Bluetooth® Mobile Phone Connectivity ⁽⁹⁾	•	•
	Daytime Running Lights (DRLs)	•	•
	LED Front Fog Lights	•	•
	LED Low & High Beam Headlights	•	•
	Automatic High Beam (AHB)	•	–
	Adaptive High Beam System (AHS)	–	•
Digital Radio with Time Shift	•	•	
12-speaker DVD Audio including Subwoofer, USB & AUX Inputs ⁽¹³⁾	•	•	
17-speaker Mark Levinson® DVD Audio with Clari-Fi ⁽¹²⁾	–	EP1, EP2	
Dual-zone Climate Control Air Conditioning with Nanoe™ ⁽¹¹⁾	•	•	
Electronic Folding Side Mirrors with Heater and Self Dimming	•	•	
Rain Sensing Wipers	•	•	
4.2" Colour Multi Information Display (MID)	•	–	
F Sport Unique LFA-style 8" Digital Instrumentation	–	•	
8" Multimedia Screen	•	•	
12.3" Multimedia Screen	–	EP1, EP2	
Emergency Flashing Brake Lights	•	•	
Electric Rear Sunshade	–	•	
Moonroof	EP1	EP2	
Anti-theft Siren & Intrusion Sensor	•	•	
F Sport Unique features include Sports Pedals, F Sport Unique Front & Rear Bumpers, Mesh Grilles, Rear Lip Spoiler, Sports Suspension Settings			
GS 300h LUXURY ENHANCEMENT PACK	Enhancement Pack 1	Moonroof, 18" Luxury Alloy Wheels	
	Enhancement Pack 2	17-speaker Mark Levinson Audio & 12.3" Multimedia Screen, Colour Head Up Display (HUD)	
GS 300h F SPORT ENHANCEMENT PACK	Enhancement Pack 1	Moonroof, Colour Head Up Display (HUD), 17-speaker Mark Levinson Audio & 12.3" Multimedia Screen	
	Enhancement Pack 2	Moonroof, Colour Head Up Display (HUD), 17-speaker Mark Levinson Audio & 12.3" Multimedia Screen	

BUILD AND PRICE YOUR LEXUS

GS 350 SPECIFICATIONS

	F Sport	Sports Luxury	
EXTERIOR ⁽⁵⁾	Length (mm)	4880	4880
	Width (mm) Mirrors Folded In	1840	1840
	Height (mm) Without Moonroof	1455	1455
	Wheelbase (mm)	2850	2850
	Front Track (mm)	1575	1575
	Rear Track (mm)	1560	1560
	Turning Circle (Kerb to Kerb m)	10.2	10.6
	Coefficient of Drag (Cd)	0.27	0.27
INTERIOR ⁽⁵⁾	Length (mm)	2050	2050
	Width (mm)	1570	1570
	Height (mm)	1180 (1140 EPI)	1140
WEIGHTS AND CAPACITIES (Approximate)	Kerb Weight (kg) ⁽⁵⁾	1655-1745	1655-1745
	Gross Vehicle Mass (kg) ⁽⁵⁾	2190	2190
	Seating Capacity	5	5
	Luggage Capacity (L)	520	520
	Fuel Tank Capacity (L)	66	66
	Towing Capacity (Braked/Unbraked) (kg) ⁽⁶⁾	1600/750	1600/750
BODY	Body Construction	Monocoque	Monocoque
	Body Type	5-door Sedan	5-door Sedan
PETROL ENGINE	Engine Type	Petrol	Petrol
	Engine Capacity (cc)	3456	3456
	Engine Designation	2GR-FKS	2GR-FKS
	Engine Description	V6, 24-valve DOHC with Dual VVT-i	V6, 24-valve DOHC with Dual VVT-i
	Fuel Injection	EFI, D-4S	EFI, D-4S
POWER ENGINE	Maximum Power (Petrol) (kW@rpm)	232kW@6400rpm	232kW@6400rpm
	Maximum Torque (Petrol) (Nm@rpm)	380Nm@4800rpm	380Nm@4800rpm
	Fuel Economy (Combined) (L/100km) ⁽⁷⁾	9.3	9.3
	Carbon Dioxide (Combined) (g/km) ⁽⁸⁾	216	216
DRIVELINE	Layout	Rear	Rear
	Transmission Description	8-speed SPDS Automatic with Sequential Shift, Electronically Controlled with Paddleshift	8-speed SPDS Automatic with Sequential Shift, Electronically Controlled with Paddleshift
STEERING	Type	Rack and Pinion	Rack and Pinion
	Power Assistance	Power Assisted Electric Motor plus VGRS and DRS	Power Assisted Electric Motor
BRAKES	Front	Ventilated Disc	Ventilated Disc
	Rear	Ventilated Disc	Ventilated Disc
SUSPENSION	Front	Sports Tuned Independent, Double Wishbone Type, Upper A-arm, Lower L-arm, Coil Springs	Independent, Double Wishbone Type, Upper A-arm, Lower L-arm, Coil Springs
	Rear	Sports Tuned Independent Multi-link Type, Coil Springs	Independent Multi-link Type, Coil Springs
TYRES AND RIMS	Front Tyre Size	235/40R19	235/40R19
	Rear Tyre Size	265/35R19	265/35R19
	Front/Rear Rim Size	19x8/19x9	19x8/19x9
	Rim Type	Alloy x4 Spare Wheel - Alloy Temp	Alloy x4 Spare Wheel - Steel Temp

	F Sport	Sports Luxury	
ADVANCED FEATURES	Vehicle Dynamics Integrated Management System (VDIM) (incorporates Anti-lock Braking System (ABS) with Brake Assist (BA), Electronic Brakeforce Distribution (EBD), Traction Control (TRC) & Vehicle Stability Control (VSC))	-	.
	Vehicle Dynamics Integrated Management System (VDIM) (incorporates Anti-lock Braking System (ABS) with Brake Assist (BA), Electronic Brakeforce Distribution (EBD), Traction Control (TRC), Vehicle Stability Control (VSC) & Dynamic Rear Steering (DRS))	.	-
	Pre-Collision Safety System (PCS) with Pedestrian Detection including Pre-Collision Braking (PCB) ⁽⁹⁾	.	.
	Adaptive Variable Suspension (AVS)	.	.
	Variable Gear Ratio Steering (VGRS)	.	-
	Blind Spot Monitor (BSM) with Rear Cross Traffic Alert (RCTA)	.	.
	Reversing Camera with Rear Guide Assist (RGA)	.	.
	Lexus Dynamic Handling (LDH) with Dynamic Rear Steering (DRS)	.	-
	10 Supplemental Restraint System (SRS) Airbags	.	.
	All-speed Radar Active Cruise Control (ACC)	.	.
	Lane Keeping Assist (LKA)	.	.
	Tyre Pressure Warning System	.	.
	Hill-start Assist Control (HAC)	.	.
	Electric Park Brake (EPB)	.	.
	Lexus Remote Touch Controller (LRT)	.	.
	Colour Head Up Display (HUD)	.	.
	Clearance & Reversing Sonars (8 head)	.	.
	Adjustable Front Seats with Driver's Seat Memory	16-way Driver/10-way Passenger	18-way
	Passenger Seat Memory	-	.
	Heated & Ventilated Front Seats	.	.
	Rear Outer Heated Seats	-	.
	Smart Entry (4-door)/Smart Entry Key Card/Push Button Start	.	.
	Heated Steering Wheel	-	.
	Satellite Navigation System ⁽¹²⁾ with SUNA Live Traffic Alerts ⁽¹⁰⁾	.	.
	Drive Mode Select with SPORT S/S+ Drive Mode	.	.
	Bluetooth [®] Mobile Phone Connectivity ⁽⁹⁾	.	.
	Daytime Running Lights (DRLs)	.	.
	LED Front Fog Lights	.	.
	LED Low & High Beam Headlights	.	.
	Adaptive High Beam System (AHS)	.	.
	Digital Radio with Time Shift	.	.
	17-speaker Mark Levinson [®] DVD Audio with Clari-Fi ⁽¹²⁾	.	.
	Dual-zone Climate Control Air Conditioning	.	-
Tri-zone Climate Control Air Conditioning with Rear Controls	-	.	
Nano [™] Technology Air Conditioning	-	.	
Electronic Folding Side Mirrors with Heater & Self Dimming	.	.	
Rain Sensing Wipers	.	.	
4.2" Colour Multi Information Display (MID)	-	.	
F Sport Unique LFA-style 8" Digital Instrumentation	-	.	
12.3" Multimedia Screen	.	.	
Emergency Flashing Brake Lights	.	.	
Electric Rear Sunshade	.	.	
Moonroof	EP1	.	
Anti-theft Siren & Intrusion Sensor	.	.	
Power Boot Lid	-	.	
F Sport Unique features include Sports Pedals, Sports Brake Package with High Friction Front Brake Pads, F Sport Unique Front & Rear Bumpers, Mesh Grilles, Rear Lip Spoiler, Sports Suspension Settings			
GS 350 F SPORT ENHANCEMENT PACK	Enhancement Pack 1	Moonroof	

GS 450h SPECIFICATIONS

	F Sport	Sports Luxury	
EXTERIOR ⁽⁵⁾	Length (mm)	4880	4880
	Width (mm) Mirrors Folded In	1840	1840
	Height (mm) Without Moonroof	1440	1455
	Wheelbase (mm)	2850	2850
	Front Track (mm)	1575	1575
	Rear Track (mm)	1560	1560
	Turning Circle (Kerb to Kerb m)	10.2	10.6
	Coefficient of Drag (Cd)	0.27	0.27
	INTERIOR ⁽⁵⁾	Length (mm)	2050
Width (mm)		1570	1570
Height (mm)		1180	1140
WEIGHTS AND CAPACITIES (Approximate)	Kerb Weight (kg) ⁽⁵⁾	1825-1910	1825-1910
	Gross Vehicle Mass (kg) ⁽⁵⁾	2325	2325
	Seating Capacity	5	5
	Luggage Capacity (L)	451	451
	Fuel Tank Capacity (L)	66	66
	Towing Capacity (Braked/Unbraked) (kg) ⁽⁶⁾	1500/750	1500/750
BODY	Body Construction	Monocoque	Monocoque
	Body Type	5-door Sedan	5-door Sedan
PETROL ENGINE	Engine Type	Petrol Electric Hybrid	Petrol Electric Hybrid
	Engine Capacity (cc)	3456	3456
	Engine Designation	2GR-FXE	2GR-FXE
	Engine Description	Atkinson Cycle V6	Atkinson Cycle V6
	Fuel Injection	EFI, D-4S	EFI, D-4S
ELECTRIC MOTOR	Maximum System Voltage	650	650
POWER ENGINE	Maximum Power (Combined) (kW)	254	254
	Maximum Power (Petrol) (kW@rpm)	215kW@6000rpm	215kW@6000rpm
	Maximum Torque (Petrol) (Nm@rpm)	352Nm@4600rpm	352Nm@4600rpm
	Fuel Economy (Combined) (L/100km) ⁽⁷⁾	6.3	6.3
	Carbon Dioxide (Combined) (g/km) ⁽⁸⁾	147	147
HIGH VOLTAGE BATTERY	Nominal Voltage (V)	288	288
DRIVELINE	Layout	Rear	Rear
	Transmission Description	Continuously Variable Transmission with Paddleshift	Continuously Variable Transmission with Paddleshift
STEERING	Type	Rack and Pinion	Rack and Pinion
	Power Assistance	Power Assisted Electric Motor Plus VGRS and DRS	Power Assisted Electric Motor
BRAKES	Front	Ventilated Disc	Ventilated Disc
	Rear	Ventilated Disc	Ventilated Disc
SUSPENSION	Front	Sports Tuned Independent, Double Wishbone Type, Upper A-arm, Lower L-arm, Coil Springs	Independent, Double Wishbone Type, Upper A-arm, Lower L-arm, Coil Springs
	Rear	Sports Tuned Independent Multi-link Type, Coil Springs	Sports Tuned Independent Multi-link Type, Coil Springs
TYRES AND RIMS	Front Tyre Size	235/40R19	235/40R19
	Rear Tyre Size	265/35R19	265/35R19
	Front/Rear Rim Size	19x8/19x9	19x8/19x9
	Rim Type	Alloy x4 Spare Wheel - Alloy Temp	Alloy x4 Spare Wheel - Steel Temp

	F Sport	Sports Luxury	
ADVANCED FEATURES	Vehicle Dynamics Integrated Management System (VDIM) (incorporates Anti-lock Braking System (ABS) with Brake Assist (BA), Electronic Brakeforce Distribution (EBD), Traction Control (TRC) & Vehicle Stability Control (VSC))	-	.
	Vehicle Dynamics Integrated Management System (VDIM) (incorporates Anti-lock Braking System (ABS) with Brake Assist (BA), Electronic Brakeforce Distribution (EBD), Traction Control (TRC), Vehicle Stability Control (VSC) & Dynamic Rear Steering (DRS))	.	-
	Pre-Collision Safety System (PCS) with Pedestrian Detection including Pre-Collision Braking (PCB) ⁽⁹⁾	.	.
	Adaptive Variable Suspension (AVS)	.	.
	Blind Spot Monitor (BSM) with Rear Cross Traffic Alert (RCTA)	.	.
	Reversing Camera with Rear Guide Assist (RGA)	.	.
	Lexus Dynamic Handling (LDH) with Dynamic Rear Steering (DRS)	.	-
	10 Supplemental Restraint System (SRS) Airbags	.	.
	All-speed Radar Active Cruise Control (ACC)	.	.
	Lane Keeping Assist (LKA)	.	.
	Tyre Pressure Warning System	.	.
	Brake Hold	.	.
	Electric Park Brake (EPB)	.	.
	Lexus Remote Touch Controller (LRT)	.	.
	Colour Head Up Display (HUD)	.	.
	Clearance & Reversing Sonars (8 head)	.	.
	Adjustable Front Seats with Driver's Seat Memory	16-way Driver/10-way Passenger	18-way
	Passenger Seat Memory	-	.
	Heated & Ventilated Front Seats	.	.
	Rear Outer Heated Seats	-	.
	Smart Entry (4-door)/Smart Entry Key Card/Push Button Start	.	.
	Heated Steering Wheel	-	.
	Satellite Navigation System ⁽²⁾ with SUNA Live Traffic Alerts ⁽¹⁰⁾	.	.
	Drive Mode Select with EV Drive Mode & SPORT+ Drive Mode	.	.
	Bluetooth® Mobile Phone Connectivity ⁽⁹⁾	.	.
	Daytime Running Lights (DRLs)	.	.
	LED Front Fog Lights	.	.
LED Low & High Beam Headlights	.	.	
Digital Radio with Time Shift	.	.	
17-speaker Mark Levinson® DVD Audio with Clari-Fi ⁽¹²⁾	.	.	
Dual-zone Climate Control Air Conditioning	.	-	
Tri-zone Climate Control Air Conditioning with Rear Controls	-	.	
Nanoe™ Technology Air Conditioning	-	.	
Electronic Folding Side Mirrors with Heater & Self Dimming	.	.	
Rain Sensing Wipers	.	.	
4.2" Colour Multi Information Display (MID)	-	.	
F Sport Unique LFA-style 8" Digital Instrumentation	-	.	
12.3" Multimedia Screen	.	.	
Emergency Flashing Brake Lights	.	.	
Electric Rear Sunshade	.	.	
Moonroof	EP1	.	
Anti-theft Siren & Intrusion Sensor	.	.	
F Sport Unique features include Sports Pedals, Sports Brake Package with High Friction Front Brake Pads, F Sport Unique Front & Rear Bumpers, Mesh Grilles, Rear Lip Spoiler, Sports Suspension Settings			
GS 450h ENHANCEMENT PACKS	F Sport Enhancement Pack 1	Moonroof	

BUILD AND PRICE YOUR LEXUS

GS F SPECIFICATIONS

EXTERIOR ⁽⁵⁾	Length (mm)	4915
	Width (mm) - Mirrors Folded In	1845
	Height (mm) - Without Moonroof	1440
	Wheelbase (mm)	2850
	Front Track (mm)	1555
	Rear Track (mm)	1560
	Turning Circle (Kerb to Kerb m)	11.2
WEIGHTS AND CAPACITIES (Approximate)	Kerb Weight (kg) ⁽⁵⁾	1825-1865
	Gross Vehicle Mass (kg) ⁽⁵⁾	2320
	Seating Capacity	5
	Luggage Capacity (L)	520
	Fuel Tank Capacity (L)	66
	Towing Capacity (Braked/Unbraked) (kg) ⁽⁶⁾	0/0
BODY	Body Construction	Monocoque
	Body Type	4-door Sedan
PETROL ENGINE	Engine Type	Petrol
	Engine Capacity (cc)	4969
	Engine Designation	2UR-GSE
	Engine Description	V8, 32-valve DOHC with Dual VVT-I
	Fuel Injection	EFI, D-4S
POWER ENGINE	Maximum Power (Combined) (kW)	N/A
	Maximum Power (Petrol) (kW@rpm)	351kW@7100rpm
	Maximum Torque (Petrol) (Nm@rpm)	530Nm@4800-5600rpm
	Fuel Economy (Combined) (L/100km) ⁽⁷⁾	11.3
	Carbon Dioxide (Combined) (g/km) ⁽⁸⁾	262
DRIVELINE	Layout	Rear
	Transmission Description	Automatic
STEERING	Type	Rack and Pinion
	Power Assistance	Power-Assisted Electric Motor
BRAKES	Front	Ventilated Discs
	Rear	Ventilated Discs
SUSPENSION	Front	Sports Tuned Independent, Double Wishbone Type, Upper A-arm, Lower L-arm, Coil Springs
	Rear	Sports Tuned Independent Multi-link Type, Coil Springs
TYRES AND RIMS	Front Tyre Size	255/35R19
	Rear Tyre Size	275/35R19
	Front/Rear Rim Size	19x9/19x10
	Rim Type	Alloy x4, Tyre Repair Kit

GS F

ADVANCED FEATURES	Vehicle Dynamics Integrated Management System (VDIM) (incorporates Anti-lock Braking System (ABS) with Brake Assist (BA), Electronic Brakeforce Distribution (EBD), Traction Control (TRC) & Vehicle Stability Control (VSC))	.
	Pre-Collision Safety System (PCS) with Pedestrian Detection including Pre-Collision Braking (PCB) ⁽⁹⁾	.
	Blind Spot Monitor (BSM) with Rear Cross Traffic Alert (RCTA)	.
	Reversing Camera with Rear Guide Assist (RGA)	.
	10 Supplemental Restraint System (SRS) Airbags	.
	All-speed Radar Active Cruise Control (ACC)	.
	Tyre Pressure Warning System	.
	Hill-start Assist Control (HAC)	.
	Adaptive Variable Suspension (AVS)	.
	Lane Keeping Assist (LKA)	.
	Acceleration Sound Control (ASC)	.
	Brembo Performance Brake Package with Orange Calipers	.
	F Exclusive LFA-style 8" Digital Instrumentation	.
	Heated Steering Wheel	.
	Carbon Fibre Reinforced Plastic (CFRP) Rear Lip Spoiler	.
	Electric Park Brake (EPB)	.
	Lexus Remote Touch Controller (LRT)	.
	Colour Head Up Display (HUD)	.
	Clearance & Reversing Sonars (8 head)	.
	10-way Power Adjustable Driver's Seat with Memory	.
	8-way Power Adjustable Front Passenger Seat	.
	Electronic Folding Side Mirrors with Heater and Self Dimming	.
	12.3" Multimedia Screen	.
Heated Front & Rear Outer Seats	.	
Ventilated Front Seats	EP4, EP5, EP6, EP7	
Alcantara Seat Trim	.	
Smart Entry (4-door)/Smart Entry Key Card/Push Button Start	.	
Satellite Navigation System ⁽²⁾ with SUNA Live Traffic Alerts ⁽¹⁰⁾	.	
Drive Mode Select - ECO, NORMAL, SPORT & SPORT+	.	
Bluetooth® Mobile Phone Connectivity ⁽¹¹⁾	.	
Daytime Running Lights (DRLs)	.	
LED Front Fog Lights	-	
Adaptive High Beam (AHS)	.	
Digital Radio with Time Shift	.	
17-speaker Mark Levinson® DVD Audio with Clari-Fi ⁽¹²⁾	.	
Tri-zone Climate Control Air Conditioning	.	
Rain Sensing Wipers	.	
Emergency Brake Signal	.	
Electric Rear Sunshade	.	
Moonroof	.	
Anti-theft Siren & Intrusion Sensor	.	
GS F ENHANCEMENT PACK	Enhancement Pack 1 (Additional Cost)	Forged 19" Polished Alloy Wheels
	Enhancement Pack 2 (Additional Cost)	Carbon Fibre Ornamentation
	Enhancement Pack 3 (Additional Cost)	Forged 19" Polished Alloy Wheels, Carbon Fibre Ornamentation
	Enhancement Pack 4 (Additional Cost)	Semi-Aniline Leather Accented Interior, Ventilated Front Seats
	Enhancement Pack 5 (Additional Cost)	Semi-Aniline Leather Accented Interior, Ventilated Front Seats, Forged 19" Polished Alloy Wheels
	Enhancement Pack 6 (Additional Cost)	Semi-Aniline Leather Accented Interior, Ventilated Front Seats, Carbon Fibre Ornamentation
	Enhancement Pack 7 (Additional Cost)	Semi-Aniline Leather Accented Interior, Ventilated Front Seats, Forged 19" Polished Alloy Wheels, Carbon Fibre Ornamentation





LEXUS OWNERSHIP SOLUTIONS

LEXUS OWNERSHIP SOLUTIONS ALLOWS YOU TO DETERMINE YOUR FINANCE COSTS AND KNOW THE GUARANTEED FUTURE VALUE (GFV)⁺ OF YOUR VEHICLE FROM THE OUTSET. IT OFFERS YOU CHOICE, CONTROL AND CERTAINTY. IN SHORT, EVERYTHING YOU'D EXPECT FROM LEXUS.

How does Lexus Ownership Solutions work?

- You choose the deposit that best fits your needs.
- You choose your term.⁺⁺
- You decide on the estimated kilometres you think the vehicle will have travelled at the end of the term (the End Odometer). The End Odometer will also include any kilometres already on the vehicle.
- Lexus Financial Services (LFS) then determines the GFV of your vehicle and calculates your monthly repayments with a final payment equal to the GFV. The GFV is the minimum value of your Lexus at the end of your finance contract. So, if you return your Lexus at the end of the term, LFS will pay you the GFV which will be put against the final payment (subject to fair wear and tear conditions and agreed kilometres being met).

The end of the term? Simply replace, retain or return.

At the end of your term you can choose to:

- Replace or sell your Lexus using the trade-in value or sale price to pay the remaining balance of your account.
- Retain your Lexus and simply pay the remaining balance of your account (including final payment).
- Alternatively, return your Lexus and, subject to fair wear and tear conditions and the agreed kilometres being met, we'll put the GFV towards the final payment on your account.

Choosing your deposit – what is best for you?

With the flexibility of Lexus Ownership Solutions, you can choose the deposit that best fits your current needs.

- If, for example, you have funds tied up in other investments, you can choose to finance your new Lexus with a zero deposit.^{††}
- Alternatively, by using a larger deposit, you can lower your monthly repayments.
- Better still, compared to other finance options over a similar term, Lexus Ownership Solutions can provide lower monthly repayments.^{***}

Want more certainty?

With Lexus Ownership Solutions, you've got the reassurance that at the end of the term (subject to fair wear and tear and agreed kilometres being met) you'll never owe more than your vehicle's worth to LFS. In other words, you don't have to worry about what your vehicle will be worth in the future because you know its minimum value from the outset.*

What happens in the case of the unexpected?

If your vehicle incurs damage and does not meet the Fair Wear and Tear guidelines, LFS will give you the opportunity to have your vehicle repaired. Otherwise, LFS can organise the repairs and deduct the cost from your GFV. This adjusted GFV will then be the price that LFS will offer you if you return the vehicle at the end of your term. Of course, if you retain the vehicle, the condition doesn't matter, however, if you replace it or sell it privately, the condition will obviously impact your sale price.

So what does your accountant think?

Naturally, we think Lexus Ownership Solutions is an excellent, innovative way to put you in control of buying a new Lexus. That said, we suggest you seek independent advice to ensure Lexus Ownership Solutions is right for you.

Wouldn't it be great if Lexus Ownership Solutions was just the beginning?

Lexus' innovations and commitment to customer service extend well beyond Lexus Ownership Solutions. Once you purchase a new Lexus, you'll become a member of the Lexus Encore Privileges Programme and enjoy a host of exclusive benefits.[†]

For further details, simply visit your nearest Lexus dealer or see lexus.com.au/services/benefits/

* The Guaranteed Future Value (GFV) is the minimum value of your new or approved demonstrator Lexus at the end of your finance contract, as determined by Lexus Financial Services (LFS). If you decide to return your car to Lexus at the end of your term, LFS will pay you the agreed GFV which will be put against your final payment, subject to fair wear and tear conditions and agreed kilometres being met. The information provided is general in nature. You should seek your own financial advice to determine whether Lexus Ownership Solutions is appropriate for your individual circumstances. Terms, conditions, fees and charges apply. Lexus Ownership Solutions GFV products are available to approved customers of Lexus Financial Services, a division of Toyota Finance Australia Limited ABN 48 002 435 181, AFSL and Australian Credit Licence 392536.

++ Up to four years.

+++ Lower monthly repayments compared to similar term with no Guaranteed Future Value (GFV) or equivalent balloon final payment. Total interest charges will be higher if a GFV or balloon final payment is selected.

† Terms and Conditions apply.

†† Approved applicants only. Terms and conditions apply. A deposit may be required for capacity reasons.

[FIND OUT MORE](#)



THE BENEFITS OF ENCORE

THE BENEFITS OF BEING A LEXUS OWNER GO FAR BEYOND THE INTRINSIC PLEASURE OF DRIVING THE VEHICLE. FROM THE MOMENT YOU'RE HANDED THE KEYS, YOU'LL ALSO BE WELCOMED TO THE LEXUS ENCORE PRIVILEGES PROGRAMME† - OFFERING A RANGE OF EXCLUSIVE INITIATIVES THAT REAFFIRM OUR ONGOING PURSUIT OF PERFECTION.

It all means you'll enter a world of benefits that extends to every corner of life. A world where everything's just that much easier and works that much more seamlessly. And a world where, should trouble ever find you, you can always find a helping hand.

Take our After Sales Service as an example. Both our technology and our technicians are at the forefront of automotive innovation. And our profound understanding of every single component of your Lexus means we can do more to ensure it's a pleasure to drive today, and in the long run. It's a world you've always belonged in. A privilege unique to Lexus drivers.

Silver service

Every aspect of your Lexus is built around your comfort and convenience, so it's fitting that when it's ready for a service, we'll come and pick it up from you and provide you with a complimentary loan car while we're inspecting. Plus, when we return your Lexus, it will have received a complimentary wash and interior vacuum.

Experience Lexus outside your vehicle

We're constantly striving to enhance the Lexus ownership experience. It's what we're known for. Our luxury events will be the perfect way to experience the Lexus lifestyle and network with other owners. Tickets may be limited, so be quick to secure your place.

Peace of mind

Wherever you are and whatever you're doing, you can relax, because with our Encore Privileges Programme, you have the 24-hour support of Lexus DriveCare.* We'll look after your car and, just as importantly, we'll look after you and your passengers.

See lexus.com.au/services/benefits for details.

† Terms and Conditions apply.

* Full DriveCare details and conditions are available at lexus.com.au/services/benefits or you can phone 1800 253 987. Lexus Australia reserves the right to change, without notice, any benefits specified. Benefits should be confirmed at the time of ordering with your authorised Lexus dealer. To the extent permitted by law, Lexus Australia will not be liable for any damage, loss or expense incurred in relation to the benefits specified above (whether by way of negligence or otherwise). Lexus Australia, a division of Toyota Motor Corporation Australia Limited ABN 64 009 686 097, 155 Bertie St, Port Melbourne Vic 3207.

[FIND OUT MORE](#)





New Vehicle Warranty expires four years from date of first delivery or 100,000kms, whichever occurs first. Refer to the Warranty conditions. The New Vehicle Warranty does not limit and may not necessarily exceed your rights under the Competition and Consumer Act 2010.

The Hybrid (HV) Battery Warranty expires eight years from date of first delivery or 160,000kms, whichever occurs first. The Warranty is comprised of the four-year Lexus New Vehicle Warranty and an additional four-year Lexus Australia Hybrid (HV) Battery Warranty. Refer to the Warranty conditions. The Warranty does not limit and may not necessarily exceed your rights under the Competition and Consumer Act 2010.

- (1) Reversing Camera/Driver Fatigue/Blind Spot Monitor (BSM) with Rear Cross Traffic Alert (RCTA)/Sonar Parking/Rear Guide Assist (RGA)/Adaptive Variable Suspension (AVS) are driver assist devices only and should not be used as a substitute for safe driving practices. The area into which the vehicle is driven must be visually monitored by the driver.
- (2) Current navigation mapping database encompasses major capital and primary national road networks and offers some coverage in regional areas. Available on all current GS and GS F models.
- (3) The Pre-Collision Safety (PCS) system with Pedestrian Detection is a driver assist feature only and not a substitute for safe driving practices. Driver remains responsible at all times for safe driving. Pedestrians may not be detected in certain conditions including low and harsh light, where partially obstructed from view, where clothing or movement obscures or effects body contours, persons under 1 metre or over 2 metres tall and where carrying or pushing large objects.
- (4) Lane Keep Assist (LKA) and Hill-start Assist Control (HAC) are driver assist devices only and should not be used as a substitute for safe driving practices. The area into which the vehicle is driven must be visually monitored by the driver.
- (5) Vehicle weights/mass and dimensions are approximate and subject to individual vehicle variances. Vehicles should be individually weighed and measured before fitting any accessories, towing or designing any compatible trailer/caravan or otherwise using the vehicle in any way that depends on this value.
- (6) Towing capacity is subject to regulatory requirements, towbar and vehicle design and towing equipment limitations.
- (7) Achieved in test conditions. Actual fuel consumption may vary depending on driving conditions/style, vehicle condition and options/accessories fitted. Fuel consumption data provided for comparison purposes only. Source: ADR81/02 combined (L/100km) for auto models.
- (8) Emissions vary depending on driving conditions/style, vehicle conditions and options/accessories.
- (9) The Bluetooth® word mark is owned by Bluetooth SIG, Inc. Not all devices are compatible and functionality varies depending on the device.
- (10) SUNA™ GPS Traffic Updates are only available in metropolitan Adelaide, Brisbane, Canberra, Gold Coast, Melbourne, Perth and Sydney; it operates from information provided by Intelomatics Australia and may not cover all road incidents and congestion. See sunatrafic.com.au for details.
- (11) The Nanoe® trade mark is owned by Panasonic Corporation.
- (12) Digital radio station coverage dependent on vehicle location.
- (13) Not all devices will be compatible. Functionality varies depending on device.

IMPORTANT NOTICE - please read: Lexus Australia uses its best endeavours to ensure this material is correct when published. You must check with your authorised Lexus dealer when ordering to ensure the vehicle with your chosen specifications, equipment and colour is available and that the vehicle can be delivered within the timeframe suitable to you. When ordering accessories, you must check with your authorised Lexus dealer to ensure the accessories' designs, features and colours are available and will fit your vehicle. Please also consider the mass of your load to ensure you will not exceed the maximum allowable individual axle capacity, Gross Vehicle Mass and/or Gross Combined Mass of the vehicle. Refer to lexus.com.au for further details. Colours displayed here are a guide only and may vary from actual colours due to printing/display processes. Certain accessories when fitted will require the removal of standard equipment. Standard equipment may be retained by Lexus Australia. Lexus Australia reserves the right to change, without notice, at any time, prices, colours, materials, equipment, specifications and discontinue colours/models. To the extent permitted by law, Lexus Australia will not be liable for any damage, loss or expense incurred as a result of reliance on this material in any way. Distributed nationally by Lexus Australia ABN 64 009 686 097, 155 Bertie St, Port Melbourne Vic 3207. PROOF HQ: L2017-000428. PRINTED: November 2017. LEX1304.



PRINTER TO INSERT FINAL FSC LOGO.
ENSURE IT IS BLACK VERSION

THIS BOOK IS PRINTED ON GREEN PAPER

The Lexus book you are reading has been produced using HannoArt Satin. A premium coated paper representing a level of craftsmanship that is without peer. This environmentally responsible paper is manufactured using low environmental impact FSC® certified pulp and is certified carbon neutral by The Carbon Reduction Institute.^ Sappi, the manufacturers of HannoArt, place high importance on delivering an environmental and sustainable operation. They operate under world's best practice ISO 14001 EMS and EMAS certification and eliminate harmful by-products by using Totally Chlorine Free (TCF) pulp. HannoArt is archival, so like our vehicles it's made to stand the test of time.

As a company that strives to lessen its impact on the environment in every way possible, Lexus believes that choosing our paper wisely is one more step we can take in preserving our planet.

^Calculations encompass carbon emissions from seedling to printer. For full details please visit kwdoggett.com.au
To learn more about the GS Line contact your Lexus dealer on 1800 023 009 or visit lexus.com.au



