


# Instrument Panel Rattle

**Service Category** Vehicle Interior

**Section** Interior Panels/Trim

**Market** USA

Lexus Supports  
ASE Certification 

## Applicability

YEAR(S)	MODEL(S)	ADDITIONAL INFORMATION
2006 – 2007	IS250, IS350	

### TSB SUPERSESSION NOTICE

The information contained in this TSB supersedes TSB No. NV003–06.

- Applicable models have been updated.

TSB No. NV003–06 is Obsolete and any printed versions should be discarded. Be sure to review the entire content of this service bulletin before proceeding.

## Introduction

Some customers may complain of rattle noises coming from the front of the instrument panel at the base of the windshield. The following procedure has been developed to improve this condition.

## Production Change Information

This TSB applies to vehicles produced **BEFORE** the Production Change Effective VINs shown below.

MODEL	DRIVETRAIN	PLANT	PRODUCTION CHANGE EFFECTIVE VIN
IS 250	2WD	Tahara	JTHBK262082059118
	AWD		JTHCK262482020116
	2WD	TMK	JTHBK262X85051753
	AWD		JTHCK262085015977
IS 350	2WD	Tahara	JTHBE262782013115
		TMK	JTHBE262785017387

## Parts Information

PREVIOUS PART NUMBER	CURRENT PART NUMBER	PART NAME	QTY
55328-30160	55328-50170	Stay, Instrument Panel No. 3	1
55345-30050	55345-30060	Clip, Instrument Panel No. 1	4

## Instrument Panel Rattle

### Required Materials

TOOLS & MATERIAL	PART NUMBER	QUANTITY
Noise Kit	08231-00801	1

### Warranty Information

OP CODE	DESCRIPTION	TIME	OFF	T1	T2
NV5014	R & R Instrument Panel Safety Pad Sub-assembly	2.0	55345 30050	91	43
Combo A	Insulate Instrument Panel Clips, HVAC Duct ,& Defroster Nozzle	0.2			

#### APPLICABLE WARRANTY

- This repair is covered under the Lexus Comprehensive Warranty. This warranty is in effect for 48 months or 50,000 miles, whichever occurs first, from the vehicle's in-service date.
- Warranty application is limited to correction of a problem based upon a customer's specific complaint.

### Repair Procedure

1. Remove the instrument panel sub-assembly.

Refer to the Technical Information System (TIS), applicable model year, Repair Manual:

- [2006/2007](#) model year IS 250 or IS 350, Vehicle Interior — Interior Panels/Trim — "Instrument Panel Safety Pad: Removal"

2. Remove the instrument panel sub-assembly to expose the instrument panel attachment clips.

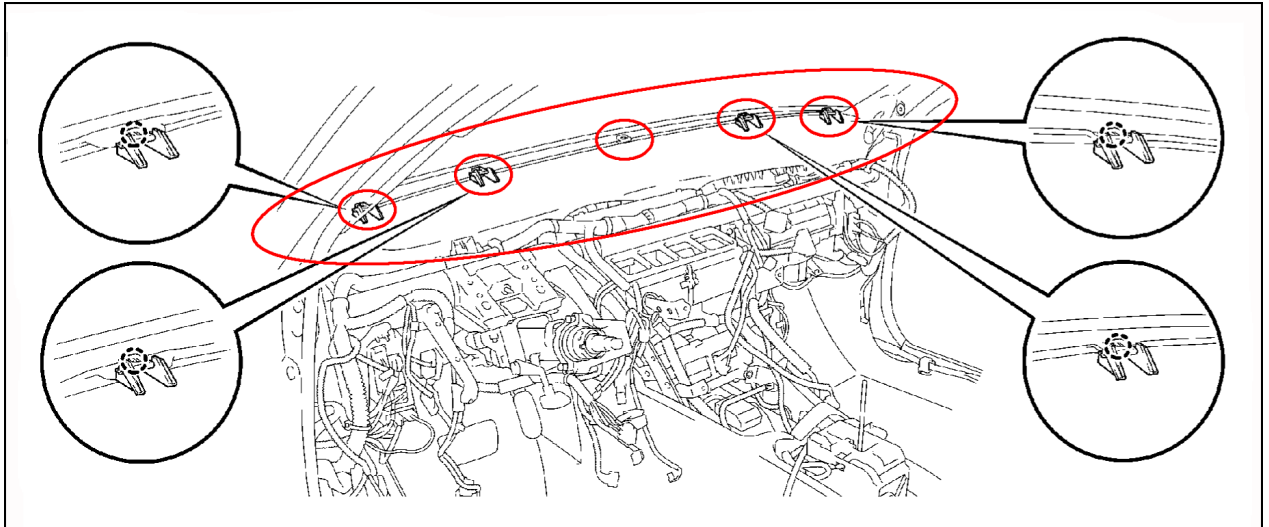
## Instrument Panel Rattle

---

### Repair Procedure (Continued)

3. Remove the instrument panel clip (Stay No. 3) at the center of the dash and replace with the NEW clip. Repeat the same on the remaining four clips (instrument panel clip No. 1).

Figure 1.



## Instrument Panel Rattle

### Repair Procedure (Continued)

4. Apply felt along the defroster nozzle lip as shown in Figure 2.

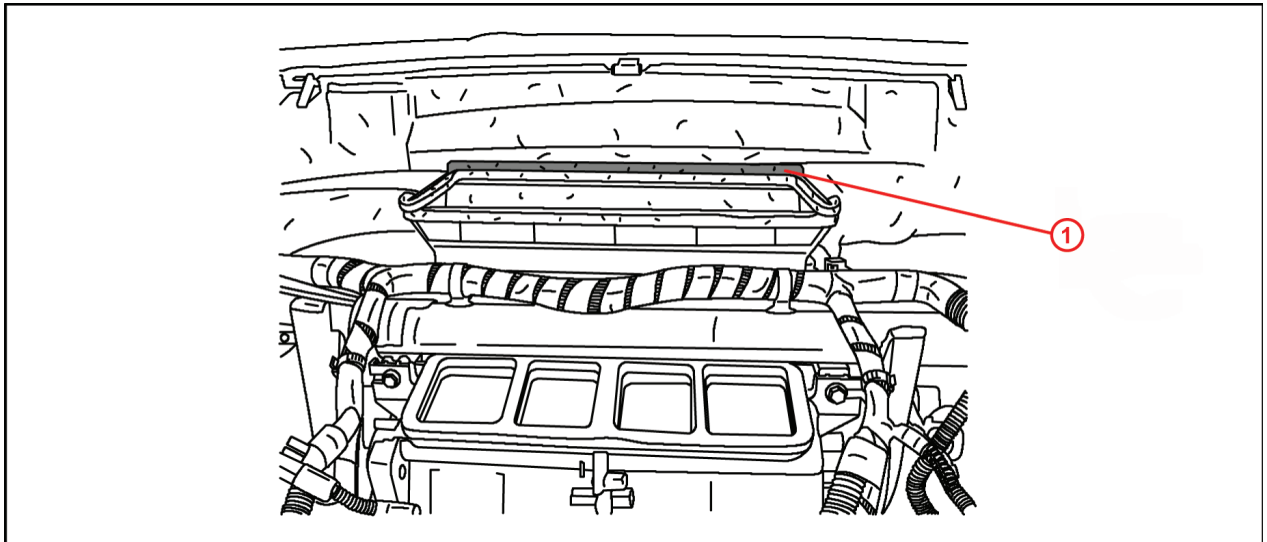
**Felt Size**

**Length:** 29 cm (11.42 in.)

**Width:** 14 mm (0.55 in.)

**Thickness:** 0.5 mm (0.02 in.)

**Figure 2.**



<b>1</b>	Apply felt (as necessary) in this area if the urethane foam is worn away or if there is plastic to plastic contact between components.
----------	--

## Instrument Panel Rattle

### Repair Procedure (Continued)

5. Apply foam to the instrument pad HVAC duct as shown in the following illustration.

**NOTE**

Instrument panel pad is shown upside down.

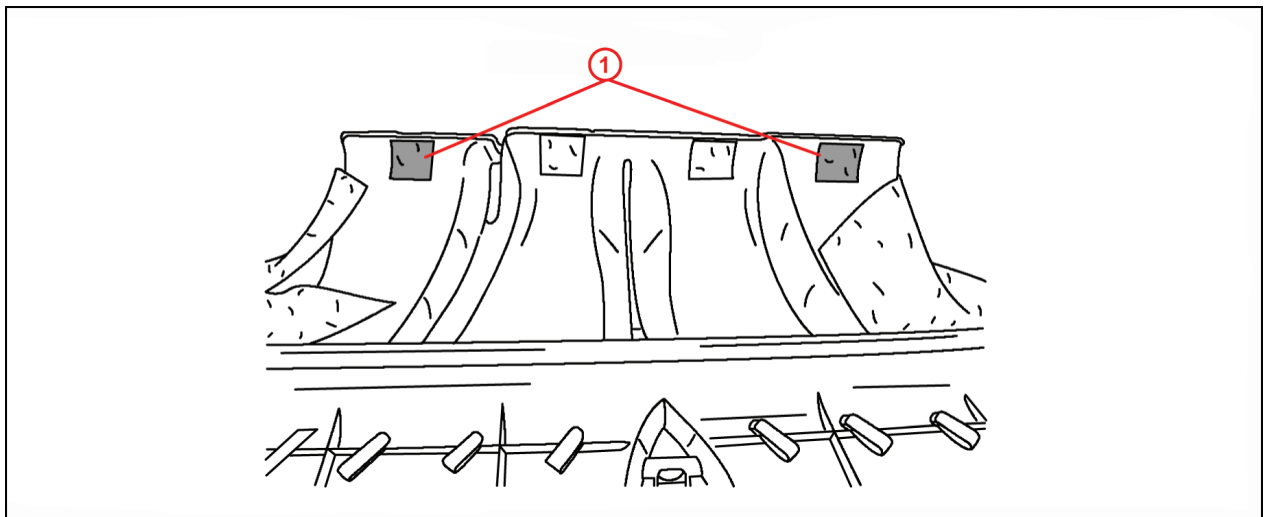
**Foam Size:**

**Length:** 30 mm (1.18 in.)

**Width:** 30 mm(1.18 in.)

**Thickness:** 5 mm (0.20 in.)

Figure 3.



**1** Apply foam here

6. Install the instrument panel pad in reverse order of disassembly.
7. Re-initialize any affected power systems.

Refer to TSIB No. [PD009-06](#) "Power System Initialization During PDS" .