

LX

LX 570 / LX 450d

LX

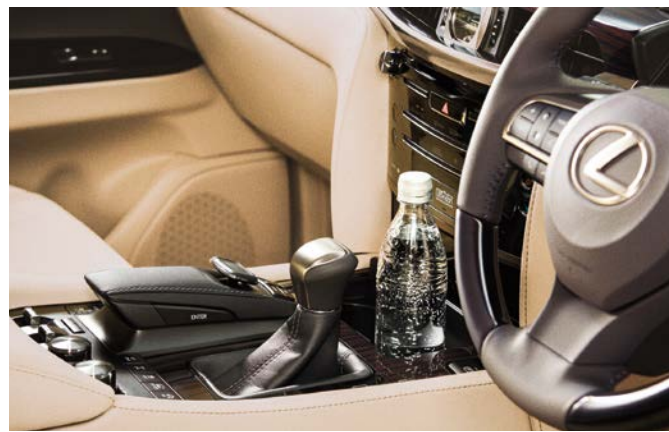




Luxury exists wherever you seek it.

LX	» P2
EPISODE 6	» P31
TAKUMI	» P66
COLOURS & TRIMS	» P68
LEXUS OWNERSHIP SOLUTIONS	» P72
BENEFITS OF ENCORE	» P74
SPECIFICATIONS	» P76





*For a long time I thought my future and music lay in the city.
As long as I tried to fit in,
I believed I could create a new world.*





*When I'm in the city,
I have all the instruments and equipment I need
to create sounds that are new to the world.
Yet somehow, something essential is missing.*



*Occasionally I need a quiet time to listen to my inner voice.
We all need time to tune into ourselves,
in a place away from the usual bustle and noise.*

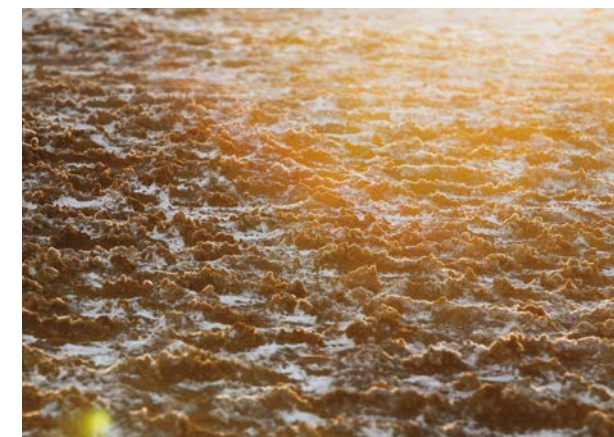






*I choose to travel to leave sensations behind,
to empty myself, so I'm open to new sounds.*





*A musician I know said silence doesn't exist.
The beat of the heart. The whisper of air moving.
I can hear them here.
With time I forget the dissonance of the city.*





The loneliness of the city and the solitude of the wilderness are very different. Loneliness doesn't inspire, nor does it make us stronger.









*Some people feel relaxed listening to the flow and ebb of waves.
Others meditate to the sound of a vehicle running on a gravel road.*



*Silence is the melody the earth is playing.
The night sky sings along with it,
silent, twinkling and beautiful.*







LEXUS

LX

EPISODE

6



1	LX CONCEPT	»» P33
2	DESIGN	»» P38
3	OFF-ROAD TECHNOLOGY	»» P42
4	PERFORMANCE	»» P46
5	FEATURES	»» P53
6	SAFETY	»» P62



EPISODE

1



LX CONCEPT

The flagship Lexus SUV fuses powerful go-anywhere performance with the urban sophistication of peerless luxury.

A masterpiece that stands at the pinnacle of the Lexus SUV line-up, the LX fuses the powerful muscular performance and intelligent packaging worthy of an iconic flagship, with the sublime refinement and finesse that are the distinctive hallmarks of Lexus luxury. The LX expresses its SUV leadership with the dynamic presence of an authentic 4WD. Built to explore demanding terrain, the strength and 4WD capabilities to confidently tackle tough off-road challenges also contribute to outstanding on-road comfort and driving ease. It exudes urban sophistication with its eye-catching styling, poised lively performance on the freeway

and city streets, and the elegant luxury of refined appointments. At the heart of this sophisticated fusion of power and pleasure is advanced Lexus technology. The outstanding performance of the V8 engine, '8 speed automatic transition', and exceptionally strong chassis is harnessed by a human-focused approach to the integration of advanced technology. It assists driving operation in demanding off-road conditions, and provides intuitive control and peace of mind to heighten driving pleasure on the road.





Complementing the exterior styling which projects the LX's flagship status in a glance, the cabin expresses the key concepts of 'powerful', 'advanced' and 'luxurious' in its seamless blend of refined features, contemporary technologies and peerless luxury. It is shaped by a human-oriented focus that embodies the core philosophy of L-finesse. The thoughtful integration of advanced technologies aims to anticipate and satisfy human emotions, rather than require people to adapt to the technology. The intuitive and natural operation of advanced driving, comfort, navigation and entertainment systems is underpinned by the separation and consolidation of functionality into operation and display zones, and smooth integration of interaction using the Remote

Touch Interface. This human-oriented focus extends to the comfort and convenience of passengers in the rear seats with the provision of an independent entertainment system and independent climate control system*. The system also discharges mildly acidic "nanoe" ions, which are gentle on the skin and hair, from the air conditioner register on the passenger's side of the centre panel, helping fill the cabin with fresh air. Occupant comfort, both on-road and off-road, is bolstered by seats designed to distribute pressure, to provide excellent hold while driving over challenging terrain, and exquisite comfort in the city.



2



DESIGN

The LX affirms its iconic flagship SUV status with a consummate blend of power, elegance and finesse.

In evolving the iconic flagship of Lexus SUVs, the muscular design dynamically expresses the LX theme of 'muscular premium' through the key concepts of 'powerful', 'advanced', 'luxurious' and 'urban sophistication'. On the LX 450 Enhancement Pack, the solid athletic presence set on bold 21-inch aluminium alloy wheels projects forward power through the signature Lexus spindle grille, which is reinforced by solid inner bars. The eye-catching Lexus L-shaped illumination of the triple LED headlamps heightens the immediate identification of the LX as a Lexus. Its unique form leads the eye to a sharp side silhouette with a flowing roofline that exudes a feeling of movement, and around to the thin

rear combination lamps with surface-emitting LEDs set high on the back door to express a feeling of width and power.

In the cabin, the feeling of power is expressed in the strong horizontal lines of the layout that enhance orientation while driving off-road. It is complemented by the beautiful craftsmanship, melding fine leather accents, rich woodgrain look trim, metal-like ornamentation and deep piano black finish to exude a feeling of elegant refinement. The subtle white illumination of the instrumentation and cabin lighting further deepens the luxury experience.



EXTERIOR

The muscular solidity that projects authentic 4WD performance is fused with sophisticated contemporary elegance to define an iconic flagship Lexus SUV.



INTERIOR

Strong horizontal lines infuse the spacious cabin with power, polished by the refined integration of advanced technologies and peerless luxury in keeping with the ultimate Lexus SUV.



3



OFF-ROAD TECHNOLOGY

The pinnacle of Lexus SUVs generates powerful off-road performance, boosting the pleasure of driving far from the road.

The platform for the LX's resilient off-road performance is built on the core strength and reliability of an exceptional chassis. It is enhanced by advanced technologies to assist driving control, boosting the pleasure of challenging off-road adventures. Multi-terrain Select adjusts multiple vehicle systems to negotiate a range of conditions: Mud & Sand, Loose Rock, Mogul, Rock & Dirt or Rock. For demanding off-road conditions such as boulders and ruts, 5-speed Crawl Control² intelligently adjusts the torque and brakes on each wheel independently, enabling the driver to focus fully on steering. Crawl Control is

complemented by Turn Assist,² which assists the making of tighter turns when there is limited space to manoeuvre. Variable Flow Control (VFC)² is also complemented by Variable Gear Ratio Steering (VGRS), which helps control the steering response and feeling by working in accordance with the vehicle speed. To help avoid blind spots and give the driver a near 360° view of terrain close to the vehicle, the Multi-terrain Monitor³ displays views from four cameras strategically positioned around the vehicle. Shift into low range and 4-wheel Active Height Control (AHC) automatically adjusts the vehicle height in various situations.





01 / Multi-terrain Select

To enhance off-road performance to suit the terrain and conditions, when Crawl Control² is switched off, Multi-terrain Select adjusts multiple vehicle systems to optimise driving characteristics for different road conditions: Mud & Sand for soft slippery uphill; Loose Rock for shifting rock surfaces or slippery uphill; Mogul for very bumpy, mogul-like roads; Rock & Dirt for very bumpy roads with moguls or rocky roads; and Rock for very bumpy and rocky roads. When Crawl Control is engaged, Auto Mode automatically optimizes the Active Traction Control System (A-TRC) control when the accelerator is depressed deep for forceful driving power.

02 / Crawl Control²

Crawl Control intelligently controls throttle and braking operation, allowing the driver to concentrate on steering operations at very low speeds in demanding off-road conditions, and to drive with ease on slippery road surfaces, and gravel or mogul covered roads.



03 / Turn Assist²

When Crawl Control is engaged, Turn Assist enhances turning performance in response to the driver's operation of the steering wheel while maintaining a constant low speed, reducing the amount of turns required to complete a tight cornering manoeuvre.

04 / Variable Flow Control (VFC)²

VFC controls the flow of steering fluid in response to vehicle speed, steering angle and engine rpm, and optimally changes the steering feel appropriate for the driving mode selected in drive mode select. When driving at low speeds off-road, it reduces steering effort and enhances steering precision.

05 / Drive mode select²

Drive mode select provides integrated control of multiple systems to let you tune performance to suit your driving style. You can select and change between modes: Normal, Eco, Comfort, Sport S and Sport S+ Modes. In addition, Customise Mode enables drivers to set their preferred settings for the powertrain, chassis and air conditioning.

06 / Multi-terrain Monitor³

When driving at low speeds, four cameras strategically positioned in the front, sides and rear relay images to the Multi-terrain Monitor, providing a near 360° view of the area around the vehicle during on-road mode, together with a view under the vehicle during off-road mode with the transfer in L4. This helps the driver to spot rocks, ruts, crevices and sheer drops that would otherwise be obscured from view. During off-road driving, a tilt gauge shows the angle the vehicle is tilted, and the front view rotation display rotates the view to help the driver intuitively grasp the road conditions ahead.

07 / 4-Wheel AHC/AVS

4-Wheel Active Height Control (AHC) provides intelligent control of suspension technology to automatically adjust the ground clearance at each wheel. It continuously makes adjustments in response to the terrain, to help optimise vehicle balance and control while driving off-road. With easy access mode switched on, when the engine is turned off, the vehicle height automatically lowers to make getting out easy. Adaptive Variable Suspension (AVS) system optimally controls the damping force of the shock absorbers on all four wheels in response to driver input and road surface conditions, contributing to excellent ride comfort and handling.

4



PERFORMANCE

The LX delivers powerful on-road and off-road performance with the assured smoothness and control worthy of a Lexus flagship SUV.

To create the exceptional performance and ride qualities demanded of a flagship luxury SUV, development of the LX focused on helping drivers to travel on or off-road with equal composure and pleasure. It begins with an exceptionally strong chassis, made with the extensive use of high-tensile steel to resist the twisting forces of uneven terrain without compromising comfort and refinement. Further contributing to the smooth and quiet ride that is a hallmark of Lexus quality, the frame is designed to separate the suspension from the bodyshell, helping to prevent noise and vibration from entering the cabin. The LX come equipped with either a 5.7-litre V8 petrol engine, or 4.5-litre V8 diesel engine. Both generate

the power and torque to confidently tackle the challenges of demanding terrain, and deliver it with a smoothness that takes driving freeways and city streets in easy stride. The engine seamlessly combines with the super intelligent 8-speed automatic transmission on the petrol engine, and the 6-speed automatic transmission on the diesel engine, to give dynamic, smooth gear changes. Advanced traction, braking and suspension systems further enhance the LX's off-road credentials, while providing the assured poise and control for a sophisticated and comfortable urban driving experience.





01 / Chassis
A high-tensile steel frame provides immense strength and rigidity - essential for impeccable safety and peerless off-road performance.

02 / 5.7-litre V8 engine/8 Super Electronic Controlled Transmission (ECT)
A dynamic V8 engine generates impressive power to tackle the most demanding off-road conditions. The cylinder block is diecast in lightweight yet strong aluminium alloy, providing outstanding reliability and durability. The engine combines seamlessly with the super intelligent 8-speed automatic transmission (8 Super ECT) to deliver power smoothly and efficiently. Finally, Multi-mode Automatic Transmission and paddle shift switches enable manual shift changes for exhilarating, sporty pleasure.

03 / Discover V6 Turbo diesel power and efficiency, in this new 5-Seat luxury SUV.
Specially-developed to master both long distance cruising and off-road adventures, the new LX 450d's 4.5-litre V8 turbo diesel features a rugged 6-speed automatic transmission. Low inertia turbochargers offer instantaneous power and EURO 5 emission levels, while hydraulic engine mounts reduce sound and vibration.



04 / Aerodynamics
A large rear spoiler combines with aero stabilising fins to enhance aerodynamic performance, providing excellent straight-line stability and outstanding road-holding.

05 / Front and rear suspension
The high-mount, double wishbone front suspension and 4-link rigid axle rear suspension give excellent handling, stability, and steering response - heightening driving pleasure. Individual components such as coil springs, spring rate and shock absorbers are optimised to give a luxurious ride, whether on-road or off-road.

06 / 10.5 LX 450d 6 Speed Automatic Transmission
With a 6-speed sequential automatic transmission and paddle shifters, the driver is rewarded with highly durable hydraulic control circuitry - resulting in a powerful and reliable driving experience.





01 / Active Traction Control System (A-TRC)

A-TRC helps enhance the ability to grip the road, especially when starting off or accelerating on uneven or slippery surfaces. Corrective measures are applied the moment the risk of wheelspin is detected, to help maintain traction.

02 / Vehicle Stability Control (VSC)

VSC helps prevent the loss of vehicle control, particularly when cornering quickly or at the onset of a skid. Selective application of the brakes and/or reducing power helps to enhance stability and reduce vehicle speed.

03 / Multi-terrain ABS with EBD

The Multi-terrain Anti-lock Brake System (ABS) senses driving conditions on dirt or sand, and optimizes ABS control for excellent stopping performance on different road surfaces. Electronic Brake Force Distribution (EBD) helps to optimise the application of braking force to each wheel.

04 / Hill-start Assist Control²

When starting off on a slope, Hill-start Assist Control automatically maintains brake pressure to help prevent the vehicle from slipping backwards. It works both on-road and off-road to help reduce driver fatigue.

05 / Trailer Sway Control

When towing a trailer, the system detects trailer sway triggered by wind, bumpy roads, or steering operation, and helps to suppress it by controlling braking and engine output.



06 / Variable Gear Ratio Steering (VGRS)

VGRS optimally controls the steering gear ratio in response to vehicle speed and steering input, helping to realise excellent manoeuvrability and stability from low through to high speeds.

07 / Off-road specifications

- A: 1. Approach angle (25 degrees)
- 2. Ramp breakover angle (23 degrees)
- 3. Departure angle (20 degrees)
- 4. Running clearance (225mm)
- B: Vehicle turnover limit angle (44 degrees)



EPISODE

5



FEATURES

The LX's urban sophistication shines through in the Lexus 'Spirit of Hospitality' and refined quality of individual details.

The finesse of the design, functionality and quality finish of each individual feature reveals the peerless luxury that enhances the LX ownership experience. It is immediately recognisable as a Lexus in the distinctive signature spindle grille, L-shaped LED 3-eye projector-type headlamps and rear combination lamps. Satisfaction grows as the LX welcomes you with LED foot area illumination and unlocks the doors when you extend a hand behind a door handle. The Lexus 'Spirit of Hospitality' deepens in the spacious cabin, in the silky white LED lighting and ambient illumination integrated in the doors. Relaxation comes easily in the exceptional comfort of perforated leather accented seats, machine-stitched for

precision and finished by a Lexus master craftsman, and the Lexus Climate Concierge that lets you customise your individual temperature and comfort. State-of-the-art entertainment is provided by the premium audio system and rear seat entertainment system with independent 11.6-inch displays.* Driving pleasure grows from a feeling of intuitive and responsive control, supported by the separation of operation and display zones, thoughtful layout of switches, and integration of advanced technologies including the colour head-up display, Remote Touch Interface, and multimedia coordination function.



01 / LED 3-eye projector-type headlamps

The next generation design of the distinctive 3-eye, energy-efficient LED lamps, which illuminate in a signature Lexus L-shape, flows seamlessly into the spindle grille to give the LX a bold fresh face. The L-shape signature is heightened by the integrated surface-emitting LED Daytime Running Lamp (DRL), and LED turn signal lamps that illuminate sequentially from the inner side to the outside of the headlamps.

02 / LED front fog lamps

LED lamps integrated into the front bumper reduce power consumption while providing a bright beam, contributing to excellent visibility for safe driving in low light and at night.

03 / LED rear combination lamps

The Lexus signature is also seen in the thin L-shaped rear combination lamps, positioned high to complement the flowing design and enhance visibility for following vehicles. The turn signal lamps, set between the chrome plated trim and tail lamps, illuminate sequentially from the inner to the outer side of the lamp to intuitively convey the turn direction. A sophisticated touch is surface-emitting LEDs in the tail and stop lamps, which appear to float when illuminated.



04 / Moonroof*

The electric tilt and slide glass moonroof available on the LX 450, lets the amount of fresh air and light you desire into the cabin. One-touch operation is quick and convenient, while a sunshade provides shade as required.

05 / Roof rails

The Lexus attention to form and function in every detail shows in the solid aluminium rails that are installed directly on the roof, enhancing the strength of the rails and at the same time smoothly integrating with the flow of the roofline.

06 / Side steps

An example of Lexus hospitality is the thoughtful LED foot area illumination integrated in the bottom of the door mirrors and side steps to welcome and guide your steps as you get in the LX.

07 / Cameras

Four cameras strategically positioned in the radiator grille, door mirrors and back door provide a near 360° view of the area around the vehicle, together with a view under the vehicle, helping low-speed manoeuvres both on and off-road.

08 / Door handles

The refined shape of the door handles is designed to make them easy to grip. For convenience, with the Electronic Key in your pocket or bag, simply touching the door handle locks and extending a hand behind the door handle unlocks the vehicle automatically.



01 / Centre console switches

The thoughtful layout of the centre console shows the human-oriented focus of L-finesse. Driving-related switches including drive mode select, Crawl Control and VSC are grouped together in easy reach of the driver for intuitive and natural operation, clearly separated from the independent grouping of comfort-focused switches for the driver and front seat passenger. The layout of the switches and cupholders is optimised to enhance ease of use. Sophisticated details such as the metallic finish on control dials including for the audio system, and the use of white illumination for lettering on the switches that complements the subtle cabin lighting, deepen the feeling of luxury.

02 / Heated Steering Wheel*

Take every corner in comfort with Heated Steering with the Enhancement Pack. One push of the 'ON' button activates the steering wheel heater. Alternatively, the Auto function enables detection of ambient temperature and cabin temperature when boarding, triggering the heater and adjusting heating time automatically.

The air conditioner ECU calculates the required operation time and automatically switches the steering wheel heater off after a maximum of 30 minutes. Automatic control can be switched on or off on the EMV setting display.

03 / Cool box

Located in the centre console box, the ample storage capacity keeps items nicely cooled on hot days.

04 / Lexus Climate Concierge

The Lexus Climate Concierge concept realises a human-centred approach to individual comfort for the occupants of the front and outboard second and third row seats. By simply pressing the Climate Concierge switch, the system coordinates with the 4-zone independent temperature controls to automatically control the cabin temperature, as well as the front and outboard second row seat heaters and ventilation that occupants come in direct contact with.



05 / Wireless charger¹

This thoughtful charging tray in the centre cluster enables wireless charging of batteries in Qi-compatible smartphones and electronic devices simply by placing them on the charger tray.

06 / USB ports/mini-jack/power outlets⁶

Two USB ports, a mini-jack and DC-12V power outlet in the centre cluster, and a DC-12V power outlet in the back of the centre console box, support the plug-and-play use of electronic devices. There is also an AC-220V power outlet in the side of the luggage space.

07 / Analogue clock

The elegant analogue clock embodies Lexus luxury, functionality and simplicity. The solid metal feel of the ring is emphasised by the piano black dial. The surface light emitting 3-dimensional scales and precisely crafted hands provide excellent visibility. A GPS correction function helps check the clock always shows the correct local time.

08 / Overhead console LED lamp switches

Refined hospitality extends to intuitive operation of the front LED dome lamp and LED map lamps in the overhead console. Touch switches that detect finger proximity turn the appropriate lamp on or off. The lamps emit a sophisticated silky white illumination.



Overseas model shown. Interior trim depicted not available in Australia.



*LX 570 shown.

01 / Seating

The LX 570's third-row seats include thoughtful luxuries such as premium perforated leather, accented upholstery and a space-up function that automatically stores the seats away. At the touch of a button, springs fold the 50/50-split seats down, before dampers and electric motors rotate them to a vertical storage position on the each side of the rear cabin - optimising luggage space.*
The LX 450d model extends the available choices, with comfortable seating for five people together with ample luggage space.

02 / Rear door window sunshades

Manual sunshades on the rear door windows give rear seat passengers convenient control over heat and light. Eliminating gaps between the shades and window trim helps to keep the sun from coming directly into the rear seats.

03 / Power back door

The back door features a split design that provides different loading options. For easy access especially when your hands are full, the upper section can be automatically opened or closed using the Electronic Key or a switch located on the instrument panel, and also closed using a switch in the upper section. The lower section opens manually.

04 / Rear seat entertainment system[^]

The entertainment system on the LX 570 for the second row seat passengers features large high-definition 11.6-inch liquid crystal Artificial Intelligence (AI) displays that automatically optimise the display contrast. The displays can be tilted manually to adjust the individual viewing angle.

05 / Centre armrest

The centre armrest in the second row seats is designed to provide supportive comfort, together with additional storage space. It also features climate control switches in fingertip reach, allowing outboard seat passengers to customise settings for their individual comfort. A high contrast liquid crystal display provides clear readouts of settings.

06 / Rear seat entertainment system jacks[^]

The back of the centre console box incorporates mini- and HDMI jacks for the rear seat entertainment system, allowing the input of a wide range of content formats. Passengers can enjoy different content on the left and right displays, as well as individual audio volume control when using the two headphone jacks.

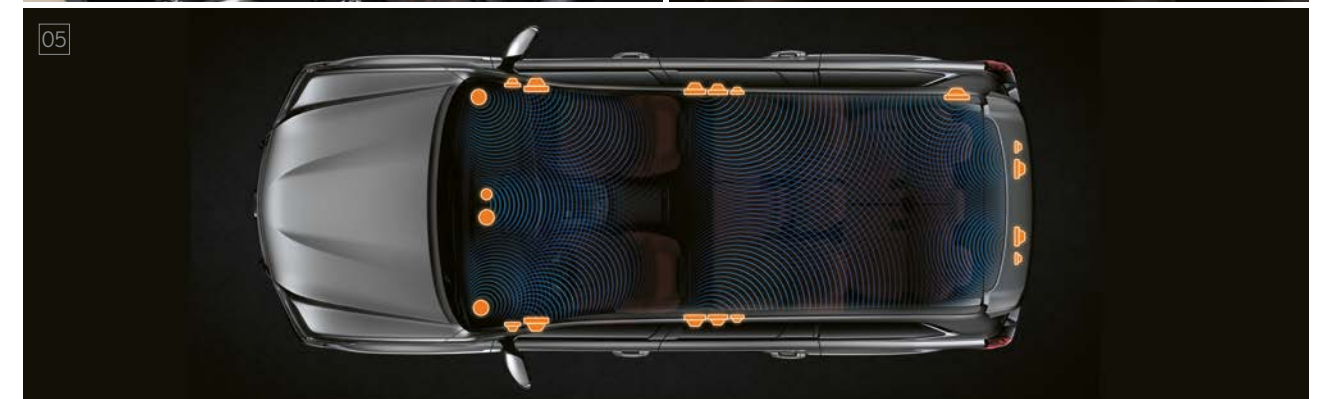
07 / Ambient illumination

Ambient illumination integrated into the trim of the front and rear doors provides a soft indirect light, heightening the feeling of sophistication in the cabin with a futuristic luxury touch.



01 / Multimedia coordination function
 The LX's triple-linkage multimedia system supports the coordinated display of information on the large 12.3-inch Electro Multi-Vision (EMV) display in the centre of the instrument panel, the 4.2-inch colour Thin Film Transistor (TFT) multi-information display in the meters, and a large colour head-up display on the lower windshield glass. For convenience, audio system information, incoming mobile calls, and some navigation on the EMV display can also be displayed on the multi-information display, and controlled using switches on the steering wheel.

02 / Meters
 The large analogue Optitron tachometer and speedometer provide excellent visibility for reading vital information at a glance. The radial dial design, three-dimensional feel of the scale indicators, silver ornamentation of the scale rings and hairline finish of the outer rings exude premium quality.



03 / Remote Touch Interface
 Simple operation that includes enter switches integrated on both sides and a back switch lets users interact intuitively with the navigation and audio systems on the 12.3-inch EMV display, for easy control of the systems.

04 / Colour head-up display
 The large colour head-up display projects a range of frequently checked driving information and warnings on the lower windshield glass in the driver's line of sight, requiring only a movement of the eyes to see it.

05 / Mark Levinson audio system[^]
 Available on the LX 570, the 19-speaker Mark Levinson[®] Reference Surround Sound System delivers home theatre quality in-car entertainment. A 3-way speaker system in both the front and second row seats creates a 7.1-channel configuration that supports 5.1-channel playback, realising a three-dimensional sound field with exceptional audio quality.

6



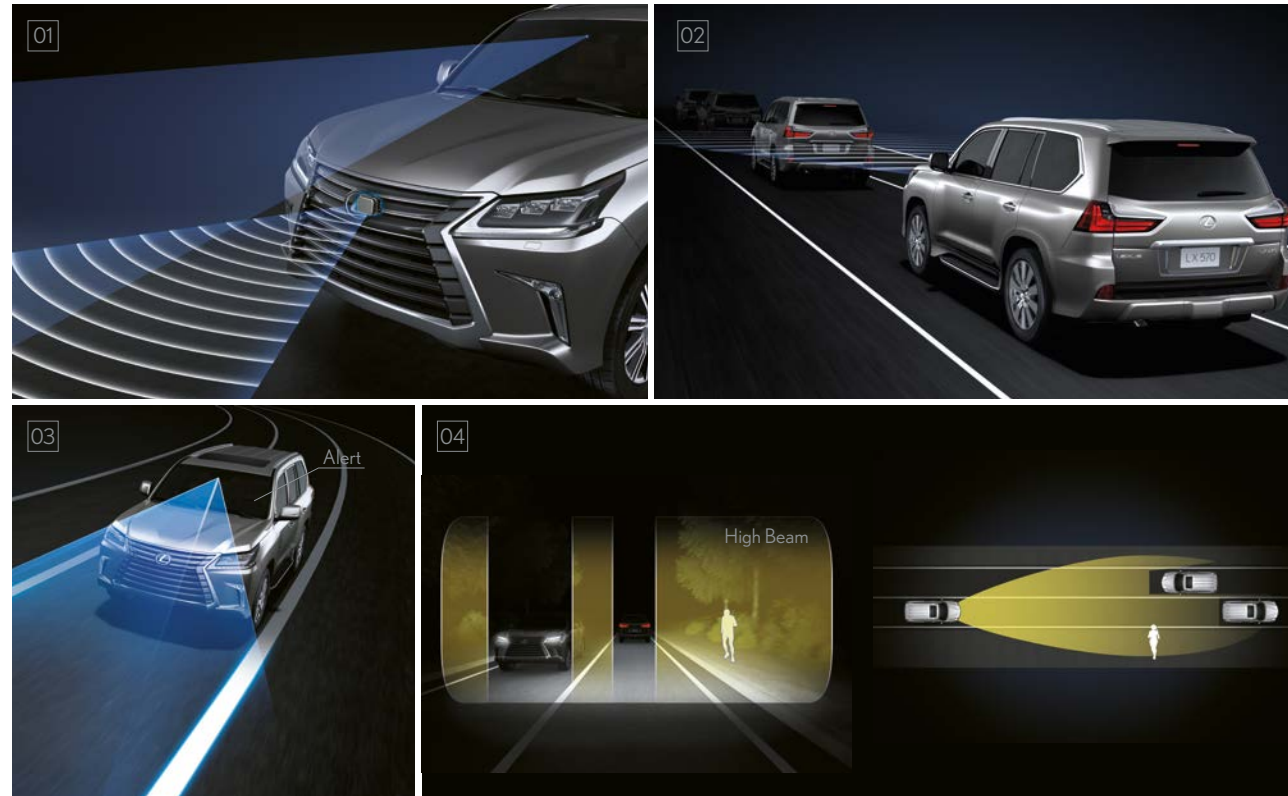
SAFETY

Because peace of mind is at the heart of Lexus luxury, an advanced and comprehensive approach to safety forms the core of the LX's flagship SUV status.

To help drivers enjoy the pure driving pleasure of the flagship Lexus SUV, the LX takes a future-focused approach to help assist confident and safe driving. It integrates and coordinates operation of advanced safety technologies to actively assist driving operation, to help avoid collisions and prevent accidents. These active driving control technologies are centred on the Lexus Safety System +² which integrates a Pre-Collision Safety System², Lane Departure Warning (LDW)², Automatic High-beam System (AHS)², and Active Radar Cruise Control with all-speed following function². In addition, the

Blind Spot Monitor System² detects vehicles in blind spots when changing lanes, and Rear Cross Traffic Alert (RCTA)² and the Multi-terrain Monitor³ provide additional checks of surroundings while parking. In the event of an accident, occupant protection is integrated into the LX's core, with the exceptionally strong frame and front sections of the body designed to absorb and evenly distribute crash forces. Inside the cabin, ten Supplemental Restraint System (SRS) airbags help reduce the impact to occupants in a collision.





LEXUS SAFETY SYSTEM +²

01 / Pre-Collision Safety System²

When the radar and camera sensors detect a collision with a pedestrian, vehicle or obstacle ahead is likely, it alerts the driver and activates pre-collision brake assist when the driver depresses the brake pedal. If it determines a collision is difficult to avoid, the pre-collision brakes and pre-collision seatbelts also operate.

02 / Active Radar Cruise Control²

In addition to maintaining a constant speed, Active Radar Cruise Control uses the radar and camera sensors to detect a vehicle driving ahead and maintain an appropriate distance between vehicles at all speeds.

03 / Lane Departure Warning (LDW)²

LDW alerts the driver with a sensory alert using steering wheel vibration or a buzzer, and on the multi-information display if the system judges the vehicle is about to cross the lane markings without using the turn signals. In addition, Vehicle Sway Warning monitors steering operation and the vehicle's position within a lane to detect vehicle sway due to driver inattention or drowsiness, and alerts the driver by a buzzer and on the multi-information display.¹⁰

04 / Adaptive High-beam System (AHS)²

When the system detects a vehicle in front, it disables/enables 11 independent LEDs in each headlamp to optimise light distribution, so that the high beams do not directly illuminate preceding or oncoming vehicles when driving at night.

05 / Blind Spot Monitor System²

When the quasi-millimetre-wave radars in the rear bumper detect vehicles up to 60 metres behind in adjacent lanes that aren't visible in the door mirrors or are rapidly approaching the blind spot, the system activates a warning indicator in the relevant door mirror the moment a vehicle enters the blind spot.

06 / Rear Cross Traffic Alert (RCTA)²

To assist safe reversing, RCTA uses quasi-millimetre-wave radars in the rear bumper to detect approaching vehicles in difficult-to-see areas behind the vehicle. When an approaching vehicle is detected, RCTA alerts the driver using a buzzer and indicator in the relevant door mirror.

07 / LED wide-angle cornering lamps

Compact, bright and energy efficient, the LED wide-angle cornering lamps provide additional illumination in the direction of travel, to the side and above, enhancing pedestrian visibility when turning at intersections.

08 / Supplemental Restraint System (SRS) airbags

The LX is fitted with 10 SRS airbags: dual-stage SRS airbags (Front seats), SRS knee airbags (Front seats), SRS side airbags (Front and outboard second row seats), and SRS curtain shield airbags (Front door, rear door and rear quarter windows).⁸



LEXUS
TAKUMI

The Lexus pursuit of perfection finds its finest expression in the master craftsmanship of the Takumi.



Every Lexus is based on an uncompromising approach to creating premium automobiles. Inspired by our 'Yet' philosophy, we seek innovation in every facet of engineering through a sophisticated fusion of seemingly incompatible ideas such as 'high performance yet high fuel efficiency'. In addition, unique Lexus styling is born of our L-finesse design language, a fine balance of 'Leading-edge' and 'finesse', so that every Lexus is not only captivating and luxurious but also highly refined.

Finally, every individual Lexus model is also measured against a set of internal standards covering design, performance, specifications and equipment to confirm it is distinctive and worthy of the Lexus emblem.

This pursuit of perfection is evident at every stage of the manufacturing process.

Every Lexus vehicle is created with masterful skill and attention to detail inspired by both traditional artisanship and state-of-the-art engineering. For example, at the Tahara plant in Japan, precision components made using leading-edge digital technology are assembled and finished by master craftsmen called Takumi whose technical expertise and sure senses are honed by decades of rigorous experience.

EXTERIOR & INTERIOR
COLOURS

A special range of exterior colours that convey the powerful presence of the flagship Lexus SUV is complemented by luxurious trim combinations featuring sophisticated contrasting tones.



Sonic Quartz[^] 085



Mercury Grey[^] 1H9



Starlight Black[^] 217



Titanium[^] 1J7



Classic Black 202



Metallic Silk[^] 4U7



Deep Blue[^] 8X5

INTERIOR TRIMS

*A passion for substance
with style.*

Your journey begins not on the road, but inside the LX's 570's lavishly-equipped interior. Here in an environment which has the ability to inspire your mind and pamper your body whatever your destination.

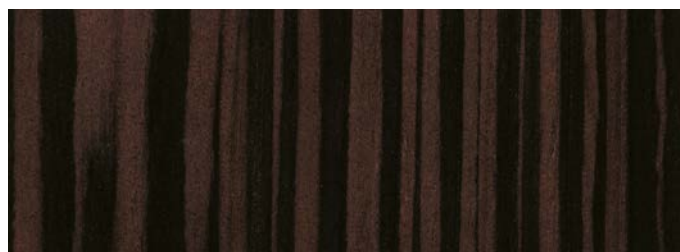
It begins with the very layout of the controls and displays. Lexus designers with a passion for extreme adventure have assigned visual displays to the upper portion of the dash, ensuring easy viewing with little distraction while you drive. Switches and controls are strategically located within easy reach in the lower portion.

Yet beyond rudimentary functions, the emotions have been diligently addressed. The placement of softer trims in regions close to your body, including areas around the side of the console and door trims, instills sensations of comfort and security.

A feeling of opulence with elegance is imparted by Shimamoku Brown woodgrain-look ornamentation on the console and passenger side dash panel, and a choice of either rich Black or a soothing Ivory interior design treatment. With such comfort levels, you'll no doubt want to take extra passengers along for the ride.

The LX 570 makes seating for eight passengers possible by power operated third row seats that descend at the touch of a button, then retract and stow away just as easily for greater cargo space.*

After all, no matter what challenging environments you may seek to explore, it's reassuring to know the environment within the LX affords a sense of peace and tranquillity along the way.



Shimamoku Brown



Lexus Australia reserves the right to vary and discontinue the current interior and exterior colours, trims and colour/trim/model combinations. Colours and trims displayed here are a guide only and may vary from actual colours due to printing/display process. See your Lexus dealer to confirm colour/trim/model availability when ordering your vehicle. *Not available on LX 450d.



LEXUS OWNERSHIP SOLUTIONS

Lexus Ownership Solutions allows you to determine your finance costs and know the Guaranteed Future Value (GFV) of your vehicle from the outset. It offers you choice, control and certainty. In short, everything you'd expect from Lexus.*

How does Lexus Ownership Solutions work?

- You choose the deposit that best fits your needs.
- You choose your term.**
- You decide on the estimated kilometres you think the vehicle will have travelled at the end of the term (the End Odometer). The End Odometer will also include any kilometres already on the vehicle.
- Lexus Financial Services (LFS) then determines the GFV+ of your vehicle and calculates your monthly repayments with a final payment equal to the GFV. The GFV is the minimum value of your Lexus at the end of your finance contract. So, if you choose to return your Lexus at the end of the term, LFS will pay you the GFV which will be put towards the remaining balance owing on your account (subject to fair wear and tear conditions and agreed kilometres being met).

The end of the term? Simply replace, retain or return.

At the end of your term you can choose to:

- Replace or sell your Lexus using the trade-in value or sale price to pay the remaining balance of your account.
- Retain your Lexus and simply pay the remaining balance of your account (including final payment).
- Alternatively, return your Lexus and, subject to fair wear and tear conditions and the agreed kilometres being met, we'll put the GFV towards the final payment on your account.

Choosing your deposit - what is best for you?

With the flexibility of Lexus Ownership Solutions, you can choose the deposit that best fits your current needs.

- If, for example, you have funds tied up in other investments, you can choose to finance your new Lexus with a zero deposit.**
- Alternatively, by using a larger deposit, you can lower your monthly repayments.
- Better still, compared to other finance options over a similar term with no GFV or equivalent balloon final payment, Lexus Ownership Solutions can provide lower monthly repayments.***

Want more certainty?

With Lexus Ownership Solutions, you've got the reassurance that at the end of the term (subject to fair wear and tear and agreed kilometres being met) you'll never owe more than your vehicle's worth to LFS. In other words, you don't have to worry about what your vehicle will be worth in the future because you know its minimum value from the outset.*

What happens in the case of the unexpected?

If your vehicle incurs damage and does not meet the Fair Wear and Tear guidelines, LFS will give you the opportunity to have your vehicle repaired. Otherwise, LFS can organise the repairs and deduct the cost from your GFV. This adjusted GFV will then be the price that LFS will offer you if you return the vehicle at the end of your term. Of course, if you retain the vehicle, the condition doesn't matter, however, if you replace it or sell it privately, the condition will obviously impact your sale price.

So what does your accountant think?

Naturally, we think Lexus Ownership Solutions is an excellent, innovative way to put you in control of buying a new Lexus. That said, we suggest you seek independent advice to ensure Lexus Ownership Solutions is right for you.

Wouldn't it be great if Lexus Ownership Solutions was just the beginning?

Lexus' innovations and commitment to customer service extend well beyond Lexus Ownership Solutions. Once you purchase a new Lexus, you'll become a member of the Lexus Encore Privileges Programme and enjoy a host of exclusive benefits.†

For further details, simply visit your nearest Lexus dealer or see lexus.com.au/services/benefits/

+ The Guaranteed Future Value (GFV) is the minimum value of your new or approved demonstrator Lexus at the end of your finance contract, as determined by Lexus Financial Services (LFS). If you decide to return your car to Lexus at the end of your term, LFS will pay you the agreed GFV which will be put against your final payment, subject to fair wear and tear conditions and agreed kilometres being met. The information provided is general in nature. You should seek your own financial advice to determine whether Lexus Ownership Solutions is appropriate for your individual circumstances. Please speak with your Lexus Dealer for more information. Terms, conditions, fees and charges apply. Lexus Ownership Solutions GFV products are available to approved customers of Lexus Financial Services, a division of Toyota Finance Australia Limited ABN 48 002 435 181, AFSL and Australian Credit Licence 392536.

** Up to four years.

*** Total interest charges will be higher if a GFV or balloon final payment is selected.

† Terms and Conditions apply.

†† Approved applicants only. Terms and conditions apply. A deposit may be required for capacity reasons.



THE BENEFITS OF ENCORE

The benefits of being a Lexus owner go far beyond the intrinsic pleasure of driving the vehicle. From the moment you're handed the keys, you'll also be welcomed to the Lexus Encore Privileges Programme† - offering a range of exclusive initiatives that reaffirm our ongoing pursuit of perfection.

It all means you'll enter a world of benefits that extends to every corner of life. A world where everything's just that much easier and works that much more seamlessly. And a world where, should trouble ever find you, you can always find a helping hand.

Take our After Sales Service as an example. Both our technology and technicians are at the forefront of automotive innovation. And our profound understanding of every single component of your Lexus means we can do more to ensure it's a pleasure to drive today, and in the long run. It's a world you've always belonged in. A privilege unique to Lexus drivers.

Silver service

Every aspect of your Lexus is built around your comfort and convenience, so it's fitting that when it's ready for a service, we'll come and pick it up from you and provide you with a complimentary loan car while we're inspecting. Plus, when we return your Lexus, it will have received a complimentary wash and interior vacuum.

Experience Lexus outside your vehicle

We're constantly striving to enhance the Lexus ownership experience. It's what we're known for. Our luxury events will be the perfect way to experience the Lexus lifestyle and network with other owners. Tickets may be limited, so be quick to secure your place.

Peace of mind

Wherever you are and whatever you're doing, you can relax, because with our Encore Privileges Programme, you have the 24-hour support of Lexus DriveCare.* We'll look after your car and, just as importantly, we'll look after you and your passengers.

See lexus.com.au/services/benefits for details.

† Encore Privileges apply for the period of the standard four-year / 100,000km factory warranty (whichever occurs first) or such other standard factory warranty offered by Lexus from time to time on new Lexus vehicles. They do not apply to any certified or extended warranty products. Lexus Australia reserves the right to change, without notice, any benefits specified. Benefits should be confirmed at the time of ordering with your authorised Lexus dealer. Benefits are subject to Encore terms and conditions. For further information on these conditions, please contact your Lexus dealer. To the extent permitted by law, Lexus Australia will not be liable for any damage, loss or expense incurred in relation to the benefits specified above (whether by way of negligence or otherwise). Lexus Australia, a division of Toyota Motor Corporation Australia Limited ABN 64 009 686 097 155 Bertie St, Port Melbourne 3207.

*Full DriveCare details and conditions are available at lexus.com.au/services/benefits or you can phone 1800 253 987. Lexus Australia reserves the right to change, without notice, any benefits specified. Benefits should be confirmed at the time of ordering with your authorised Lexus dealer. To the extent permitted by law, Lexus Australia will not be liable for any damage, loss or expense incurred in relation to the benefits specified above (whether by way of negligence or otherwise). Lexus Australia, a division of Toyota Motor Corporation Australia Limited ABN 64 009 686 097, 155 Bertie St, Port Melbourne Vic 3207.



LX RANGE GENERAL SPECIFICATIONS		LX 570	LX 450d	
EXTERIOR	Turning Circle at Kerb (m)	11.8	11.8	
	INTERIOR	Length (mm)	5080	5080
		Width (mm)	1980	1980
Height (mm)		1865	1865	
WEIGHTS AND CAPACITIES (Approximate)	Approximate Kerb Weight (kg)	2510-2740	2510-2740	
	GVM (Gross Vehicle Mass) (kg) ⁷	3350	3350	
	Seating Capacity	8	5	
	Luggage Capacity (L) (rear seat standard position)	259 - 8 Occupants, 701 - 5 Occupants.	909 - 5 Occupants.	
	Luggage Capacity (L) (rear seats folded)	1267 - 2 Occupants	1431 - 2 Occupants.	
	Fuel Tank Capacity (L)	93L Main Tank/45L Sub Tank	93L Main Tank	
	Towing Capacity (braked/unbraked) (kg)	3500/750	3500/750	
BODY	Construction	Body on Frame	Body on Frame	
	Type	Wagon	Wagon	
ENGINE	Type	Petrol	Diesel	
	Capacity (cc)	5663	4461	
	Engine Code Name	3UR-FE	1VD-FTV	
	Engine Description	V8/DOHC/32V	V8/DOHC/32V	
	Maximum Power	270kW @ 5600rpm	200kW @ 3600rpm	
	Maximum Torque	530Nm @ 3200rpm	650Nm @ 1600-2800 rpm	
	Fuel Economy (Combined, L/100km) ⁹	14.4	9.5	
	Carbon Dioxide (Combined, g/km) ¹⁰	334	250	
DRIVETRAIN	Driven Wheels	4WD	4WD	
	Transmission	8-speed Automatic, Electronically Controlled with Flex Lock-up Torque Converter and Artificial Intelligence Shift Control	6-speed Automatic, with Artificial Intelligence Shift Control	
4WD SPECS	4WD System	Constant 4WD	Constant 4WD	
	Dual Range Transfer	Equipped	Equipped	
	Multi-Terrain Select (five setting)	Equipped	Equipped	
STEERING	Type	Rack and Pinion with VGRS	Rack and Pinion with VGRS	
	Operation	Power Assisted	Power Assisted	
BRAKES	Front	Ventilated Discs	Ventilated Discs	
	Rear	Ventilated Discs	Ventilated Discs	
	Multi-Terrain Anti-skid Brakes (ABS)	STD	STD	
	Electronic Brake-force Distribution (EBD)	STD	STD	
	Active Traction Control (A-TRC)	STD	STD	
SUSPENSION	Front	Double Wishbone	Double Wishbone	
	Rear	4 Link	4 Link	
TYRES AND RIMS	Front/Rear Tyre Size	285/50 R20 (Enhancement Pack: 275/50 R21)	285/50 R20	
	Front/Rear Rim Size (ins)	20x8.5J (Enhancement Pack: 21x8.5J)	20x8.5J	
	Rim Type	Alloy	Alloy	

LX 570 ADVANCED FEATURES	LX 570	LX 450d
Vehicle Stability Control (VSC)	•	•
All Speed Radar Active Cruise Control (ACC)	•	•
Pre-Collision Safety System (PCS) with Pre-Collision Braking (PCB)	•	•
Paddle Shift	•	•
Active Height Control	•	•
10 Supplemental Restraint System (SRS) Airbags	•	•
Reversing Camera (RVC) with Rear Guide Assist (RGA)	•	•
Tyre Pressure Warning System (TPWS)	•	•
Off-road Crawl Control	•	•
Clearance and Reverse Parking Sonars	•	•
Smart Key Entry/Push Button Start	•	•
Smart Entry Key Card	•	•
Power Back Door Upper Tailgate	•	•
Moonroof	•	•
Illuminated Entry System	•	•
Panoramic View Monitor (PVM)	•	•
LED Headlamps	•	•
LED Daytime Running Lights	•	•
Adaptive High-beam System (AHS)	•	•
Satellite Navigation System ⁴	•	•
Bluetooth® Compatibility ¹¹	•	•
9-speaker Audio with DAB+ ⁶ , USB Connection and DVD Player ⁵		•
19-speaker Mark Levinson® Audio with DAB+ ⁶ , USB Connection and DVD Player ⁵	•	
20" Alloy Wheels	•	•
21" Alloy Wheels	Enhancement Pack	
Roof Rails	•	•
Cool Box	•	•
Rear Roof Spoiler	•	•
4-zone Independent Climate Control with nanoe technology	•	•
Dual Rear Seat Entertainment Screens with Three Infrared Headphones	•	
Heated Front Seats	•	•
Heated and Ventilated Front Seats	Enhancement Pack	
Heated and Ventilated Second Row Outer Seats	Enhancement Pack	
Heated Steering Wheel	Enhancement Pack	
Multi Terrain Monitor	•	•
12V Accessory Socket	•	•
Premium Steering Wheel with Audio Controls	•	•
Anti-theft Siren and Intrusion Sensor	•	•
Emergency Flashing Brake Lights	•	•
Sequential Indicators	•	•
Electric Park Brake	•	•
Drive Mode Select	•	•
Colour Head-up Display	•	•
Wireless Mobile Phone Charger ¹	•	•
Lane Departure Warning (LDW)	•	•
Blind Spot Monitor (BSM) with Rear Cross Traffic Alert (RCTA)	•	•

DISCLAIMERS

1 WIRELESS CHARGER

Only Qi-supported devices are compatible. Refer to your device manufacturer to determine your device's compatibility. Some devices may require the purchase of a Qi-supported accessory to enable wireless charging.

2 GENERAL DRIVER ASSIST FEATURES

These features are driver assist features only and are not a substitute for safe driving practices. Driver remains responsible at all times for safe driving. [*Reversing Camera/Park Assist/Parking Sensors/Front/Rear/Side Sensors/Driver Fatigue Monitor/Blind Spot Monitor/Rear Cross Traffic Alert/Lane Departure Warning (LDA)/Pre-Collision Safety system (PCS) /Active Cruise Control (ACC)/Automatic High Beam (AHB)/Autonomous Emergency Braking (AEB)/Downhill Assist Control/Hill-start Assist Control/Forward Collision Warning (FCW)/ Brake Assist (BA)]

3 MULTI-TERRAIN MONITOR

Multi-Terrain Monitor does not provide a comprehensive view of the area surrounding the vehicle, it is a driver assist device only and should not be used as a substitute for safe driving practices. Areas into which the vehicle is driven must be visually monitored.

4 SATELLITE NAVIGATION

Current navigation mapping database encompasses major capital and primary national road networks and offers some coverage in regional areas. [Available on current model LX.]

5 USB

Not all devices will be compatible. Functionality varies depending on device.

6 DAB+

Digital radio station coverage dependent on vehicle location.

7 GVM

Gross Vehicle Mass (GVM) is the total permissible combined weight of the vehicle, including occupants, fuel and cargo. Vehicle weights/ mass and dimensions are approximate and subject to individual vehicle variances. Vehicles should be individually weighed and measured before fitting any accessories, towing or designing any compatible trailer/caravan or otherwise using the vehicle in any way that depends on this value.

IMPORTANT NOTICE - Lexus Australia uses its best endeavours to ensure material is correct when published. Check with your authorised Lexus dealer when ordering to ensure the vehicle with your chosen specifications, equipment and colour is available and can be delivered within the timeframe suitable to you. When ordering accessories, check with your authorised Lexus dealer to ensure the accessory's design, features and colours are available and fit your vehicle. Ensure the mass of your load does not exceed the maximum allowable individual axle capacity, Gross Vehicle Mass and/or Gross Combined Mass of the vehicle. Colours displayed are a guide only and may vary from actual colours due to printing/display processes. Certain accessories when fitted will require the removal of standard equipment, which may be retained by Lexus Australia or your Lexus dealer. Lexus Australia reserves the right to change, without notice, prices, colours, materials, equipment, specifications and discontinue colours/models. To the extent permitted by law, Lexus Australia will not be liable for any damage, loss or expense incurred as a result of reliance on this material in any way. Distributed nationally by Lexus Australia ABN 64 009 686 097, 155 Bertie St, Port Melbourne 3207. Printed in March 2018. PROOF: L2018-009314.

8 SRS AIRBAGS

The SRS airbags are supplemental devices to be used with the seatbelts. The driver and all passengers in the vehicle must wear their seatbelts properly at all times. Please do not use accessories for the seats that cover the parts where the SRS side airbags should inflate. Such accessories may prevent the SRS side airbags from activating correctly, causing serious injury (Lexus genuine seat covers are specifically designed for models equipped with the SRS side airbags. To find out about availability in your area, please enquire at your local dealer). The photo shows all the SRS airbags activated for display purposes only (the SRS side and curtain shield airbags only inflate on the side of the collision in an actual accident). For details on these and other important safety features, be sure to read the Owner's Manual carefully. The system may not operate properly depending on the weather, road and vehicle conditions or other factors. Be sure to read the Owner's Manual carefully.

9 FUEL ECONOMY

Achieved in test conditions. Actual fuel consumption may vary depending on driving conditions/style, vehicle condition and options/accessories fitted. Fuel consumption data provided for comparison purposes only. Source: ADR81/02 (for auto models)

10 CARBON DIOXIDE

Emissions vary depending on driving conditions/style, vehicle conditions and options/accessories.

11 BLUETOOTH

The Bluetooth® word mark is owned by Bluetooth SIG, Inc. Not all devices will be compatible and functionality varies depending on the device.

12 CRAWL CONTROL WITH TURN ASSIST

Crawl Control with Turn Assist is a driver assist technology and should not be used as a substitute for safe driving practices. Areas into which the vehicle is driven must be visually monitored.

13 PRE-COLLISION SAFETY SYSTEM/PCS /WITH PEDESTRIAN DETECTION

Pre-Collision Safety system with Pedestrian Detection is a driver assist feature only and not a substitute for safe driving practices. Driver remains responsible at all times for safe driving. Pedestrians may not be detected in certain conditions including low and harsh light, where partially obstructed from view, where clothing or movement obscures or effects body contours, persons under 1 metre or over 2 metres tall and where carrying or pushing large objects.

- Addition of extra features may change figures in this chart.

- Lexus Australia reserves the right to alter any details of specifications and equipment without notice. Details of specifications and equipment are also subject to change to suit local conditions and requirements. Please enquire at your local dealer for details of any such changes that might be required for your area.

Note: Vehicles pictured and specifications detailed in this catalog may vary from models and equipment available in your area.

- Vehicle body color might differ slightly from the printed photos in this catalogue.